



CONSTRUCTION ACTIVITIES

Full Closure of 26th Street for Track Work and Roadway Improvements

ATTENTION RESIDENTS AND BUSINESS OWNERS

In order to complete track work and roadway improvements on 26th Street for the Expo Line project, the design-build contractor *Skanska-Rados, Joint Venture (SRJV)* will need to implement a full closure.

What: Full 5-Day Street Closure for Track Work and Roadway Improvements

When: Continuous Closure - 7:00 a.m., Monday, September 15 to 6:00 a.m., Saturday, September 20

Work Hours: 24-Hours work shifts

Where: 26th Street, south of Olympic Boulevard

Traffic Impacts:

- Northbound 26th Street will be closed between Cloverfield Boulevard and Olympic Boulevard and traffic will be detoured at Cloverfield Boulevard.
- **Pedestrian and vehicular access to Bergamot Arts Center will be maintained via the main entrance on Michigan Avenue. The 26th Street entrance will be closed during the rail installation.**
- Eastbound and westbound Olympic Boulevard will remain open at all times.
- The crosswalk on the south side of Olympic Boulevard at 26th Street will be temporarily closed during the closure period.
- Local and pedestrian access on 26th Street, south of Olympic Boulevard, will be maintained and managed by flaggers.

Advisories:

- Electronic message boards, directional signage and flaggers will be used to direct vehicles and pedestrians around the construction zone.
- No parking will be allowed at any time during this closure. Signage with specific restrictions will be strictly enforced and will be in place in all construction areas.
- Noise levels will be monitored to ensure compliance and the work area will be watered down to minimize dust.
- Please obey all posted construction signs and do not enter the construction work zone.
- For additional information, contact the **City of Santa Monica Public Works Department at 310-458-8736.**

(Construction schedules are subject to change for various reasons including but not limited to: weather conditions, unforeseen emergencies and other acts of nature.)

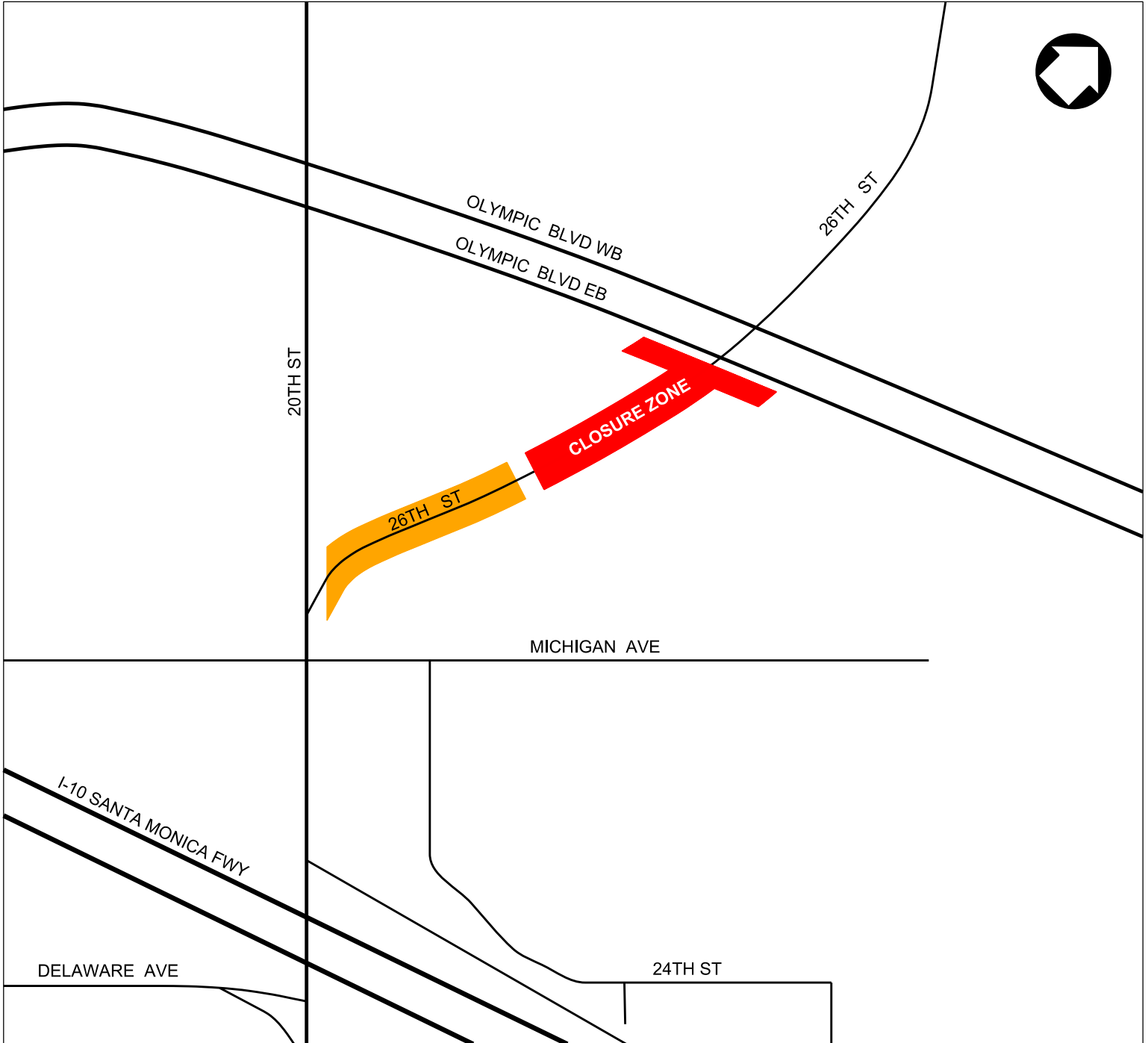
Glenda Y. Silva
Exposition Construction Authority
Tel. 213-243-5534
gsilva@exporail.net


Expo Light Rail Line
Government/Community Relations Contact Information
Hotline: 213-922-EXPO
Website: www.BuildExpo.org

Torri D. Hill
Skanska-Rados Joint Venture
Tel. 310-500-1485
torri.hill@skanska.com

Date Issued: September 5, 2014

26TH STREET CLOSURE



 Local access only. No thru traffic across closure zone.

* Bergamot Arts Center access via Michigan Avenue entrance.