

# Metro ExpressLanes Project



# **METRO LA CRD (ExpressLanes) PROJECT**

## **QUARTERLY PROJECT STATUS REPORT**

THE PREPARATION OF THIS DOCUMENT HAS BEEN FINANCED IN PART THROUGH A GRANT FROM THE U. S. DEPARTMENT OF TRANSPORTATION, FEDERAL TRANSIT ADMINISTRATION (FTA).

**JUNE 2010**

## **TABLE OF CONTENTS**

	Page No.
Project Overview & Status.....	1-3
Management Issues.....	4-5
Project Status	
• Project Scope.....	6-9
• Schedule	
○ Key Milestones Six-Month Lookahead .....	10
○ Project Summary Schedule .....	11
○ Critical Path Narrative.....	12-13
• Project Cost Status/Financial/Grant Status.....	14-17
• Staffing.....	18
• Real Estate.....	19
• Environmental.....	20
• Community Relations.....	21
• Quality Assurance.....	21
• Safety.....	21
• Third Party.....	22-25
Chronology of Events.....	26-27
LA CRD Pre-Deployment Data Collection.....	28-29
Appendices.....	30-33

## **PROJECT OVERVIEW & STATUS**

*Metro, Caltrans, and other mobility partners are working together to develop a package of solutions that will increase traffic flow and provide better travel options on I-10 and I-110 in Los Angeles County. ExpressLanes is a one-year demonstration project that will test innovations to improve existing transportation systems in three sub-regions: the San Gabriel Valley, Central Los Angeles and the South Bay Cities. These three sub-regions represent nearly 50 percent of both population and employment in LA County.*

*The Project Goal is to improve mobility and provide congestion relief on I-10 and I-110 corridors through the introduction of congestion pricing by converting High Occupancy Vehicle (HOV) lanes to High Occupancy Toll (HOT) lanes, improvement of transit service and other alternatives to driving, improvements to transit facilities, and the implementation of an intelligent parking management system in downtown Los Angeles.*

*This project offers improved transportation options and a choice for drivers of single occupant vehicles (SOV) to pay to travel in a high occupancy lane. The minimum toll per mile is \$0.25 and the maximum toll per mile is \$1.40. The general purpose lanes will not be tolled. An additional aim of the program is to foster incentives for sustainable change that creates travel time savings, increased trip reliability, cost savings, improves air quality and effectively manages our current roadway network.*

*The federal grant name for this Project is the Los Angeles County Congestion Reduction Demonstration (LA CRD). It is estimated that more than 2,400 construction-related jobs will be generated by this project.*

### **PROJECT MANAGEMENT**

Based upon earned value, the Project is 15.0% complete. Staff continues to work with Caltrans to address potential issues of conflict which may arise as a result of work they are currently performing related to the I-10 Rehab project. Staff is reviewing existing contracts and their status in order to manage any risk to our ExpressLanes project.

### **TOLL INFRASTRUCTURE AND FREEWAY/ROADWAY IMPROVEMENTS**

This element has completed the Environmental and Preliminary Design phases. Caltrans is the lead agency for the NEPA and CEQA Environmental Documents. On April 28, 2010, the Final EIR/FONSI for the I-10 and I-110 HOT Lanes was approved. On May 14, 2010 the Environmental Assessment was approved. Upon concurrence from FHWA, the Design-Build-Operate-Maintain (DBOM) RFP was released on June 7, 2010.

Staff continues to work with FTA/FHWA partners regarding the need for a schedule extension to ensure all roadway and tolling installations are completed prior to opening the HOT Lanes. Due to the high risk posed by the ongoing work being performed by the Caltrans I-10 Rehab contractor on the I-10 corridor, Metro is in discussions with FHWA to have the I-110 tolling operation open before the I-10 tolling operation. The DBOM RFP advertisement date has slipped due to the delayed approval of FHWA to allow it to be advertised.

## **PROJECT OVERVIEW & STATUS (Contd)**

Also FHWA has requested that they review and approve each amendment to the DBOM RFP before it is issued to the bidders. In addition, the HOT Lanes project has experienced a further delay in the completion of the final fact sheets which Caltrans and FHWA are in the process of reviewing. These delays have contributed to a project cost increase and an additional 2 more months to the projected 19 months requested schedule extension, which is now projecting a 21 month extension for opening the I-110 Hot Lanes, i.e. Oct. 1, 2012. The projected date for the opening of the I-10 Hot Lanes is now scheduled for Feb. 1, 2013.

However, this time frame is currently being analyzed, with the concurrence of USDOT, based upon phasing and delays resulting from the issuance of the RFP and addenda. The opening date will be finalized once the DBOM contract has been awarded.

Assemblymember Mike Eng agreed to author AB1224 which would extend Metro's tolling authority until January 2015. In June, AB1224 was passed out of the Senate Transportation and Housing Committee, 8-0.

### TRANSIT SERVICE IMPROVEMENTS

59 new clean-fuel buses will be operated to support the demonstration project. Metro continues to operate its new Silver Line service connecting passengers to the El Monte and Artesia Transit Centers. Revenue Operations have been pushed back to December 2011 to reflect the projected opening of the I-110 Express Lanes in 2012. For the month of June, the Silver Line weekday boardings total was 7,227 which represents a 9.3% increase in ridership since the Silver Line started service in December 2009.

All of our municipal transit partners – Gardena, Foothill and Torrance have placed the order for their buses. Gardena had the first of their 2 buses delivered on June 25<sup>th</sup>; the other is expected in July. Foothill and Torrance expect to receive their buses later this year.

LADOT completed Preliminary Engineering (PE) of all 19 intersections at the end of February. Staff completed the bid package in May and is awaiting approval of the E-76 for Construction funds that was submitted to Caltrans in April. Projected start date for construction is expected to be September 1, 2010 pending approval of the E-76.

### TRANSIT FACILITY IMPROVEMENTS

***El Monte Transit Center*** – Completed construction for Contract C0934R for Demo, Repave and Lighting Installation over the former Old Transportation Bldg. Completed construction at Power Chevrolet; Completed demolition of the Metro Transportation Building and completed paving at the site. Contract C0959 for the temporary terminal was awarded to S.H.E. for \$657K with NTP issued April 20, 2010; construction completion is anticipated for August 2010. Continued coordination with the Gas Co. for relocating a 20" gas main. Received 8 technical D/B proposals for Contract C0958 El Monte Station D/B construction. Contract C0958 for \$39M as awarded on June 18, 2010 to KPRS Construction Services, Inc. Notice to Proceed is anticipated mid July 2010.

## **PROJECT OVERVIEW & STATUS (Contd)**

**Patsaouras Plaza** – 95% Advanced Conceptual Engineering was completed this period. Continued coordination with Caltrans disciplines. Additional coordination with High Speed Rail project required to reduce potential future design and construction conflicts. Metro staff is reviewing the 95% design with comments due in July 2010. Environmental approvals are pending.

**Harbor Transitway** – This project will have at least 6 procurements. The low bid at \$547K was awarded to Minco Construction for the Artesia Law Enforcement substation & CCTVs with NTP issued March 2010. The low bid at \$443K was awarded to Lime Inc for the Station lighting & UPS with NTP issued June 2010. Procurement activities remain ongoing for the bus stop cutouts. Two bids were submitted for the sound attenuation pilot test project at a greater value than originally estimated. Staff anticipates award at the low bid of \$912,500 in the July 2010 period. Project management is coordinating with staff for the system-wide CCTVs and signage/way-finding work scope.

**Division 13 Facility** - The design team continues to progress completion of the 100% final design. 100% Design was submitted to Metro on June 22, 2010. Metro comments expected mid July 2010.

**Pomona Metrolink Station** – In May, 143 new parking spaces were opened for use east of the existing parking spaces. Construction of the temporary platform to board passengers on Main Track 2 (MT-2) traveling toward San Bernardino was completed and put into Service on June 20, 2010. MT2 was shifted to its new alignment for the center platform widening and extension and for use with the temporary platform. Construction of the center platform extension continues. MT-1 and MT-2 realignment has been completed.

### DEMAND-BASED PARKING PRICING (EXPRESSPARK)

On June 25, 2010, LADOT submitted the final draft of the SEMP documents to FHWA for approval. The E-76 for PE 2 will be submitted to Caltrans in the first week of July, which will obligate all of the remaining funds. However, Caltrans District 7 has indicated they will not forward to Sacramento for approval until FHWA has approved the SEMP. LADOT is also in the process of completing the RFP, which will be submitted to FHWA for approval.

## **MANAGEMENT ISSUES**

**Concern No. 1: Caltrans Cooperative Agreement for ExpressLanes**

**Status/Action** Metro continued to review Caltrans revisions throughout the month of June. It is anticipated that execution of the Agreement will occur in the month of July.

**Concern No. 2: Review of the 30% Design Package and Finalization of the RFP Documents**

**Status/Action** Concurrence from FHWA was received to allow Metro to issue the DBOM RFP with the understanding that addenda will follow during the bid period to clarify any additional scope elements that were not fully developed at the time the RFP was released and to show approval of the Fact Sheets.

**Concern No. 3: Project Risk Register**

**Status/Action** The major project risks to the schedule continues to be: the approval of the Fact Sheets by Caltrans; FHWA approval of Addenda to the DBOM RFP and the Final RFP; and, schedule delays in the I-10 Rehab Contract. During the month of June meetings were held with all members of the project team in an effort to work through the issues which clearly appear to be show stoppers in obtaining approval of the fact sheets. The Risk Register will be updated and delays in the issuance of the Addenda to the RFP will be incorporated as will actual delays to the project be incorporated into the project Baseline Schedule. In July, Metro will examine the impacts of the Rehab Contract schedule delay, now approximately 5 months, to the ExpressLanes project.

**Concern No. 4: Tolling Agreement**

**Status/Action** Tolling agreement with USDOT has not been finalized. Revised draft language from USDOT was reviewed by Metro and Caltrans in June. Anticipate execution of the agreement by the end of July 2010.

**Concern No. 5: Project Management Plan (PMP)**

**Status/Action** The Project Management Plan (PMP) has not been finalized. The PMP is under internal review by Executive staff. The document is expected to be finalized by July 2010.

## **MANAGEMENT ISSUES (Contd)**

### **Concern No. 6: Budget Increase**

**Status/Action** The MOU with USDOT required Metro to program funds for the ExpressLanes by September 30, 2008. As a result, the programmed budget amount does not reflect the preliminary engineering and environmental analysis that was recently completed. Latest preliminary estimates for the toll infrastructure and freeway/roadway improvements exceed the current approved project budget. Once the DBOM proposals have been received and evaluated, Metro will seek to secure additional non-CRD/UPA funding sources to address the shortfall or reduce/defer scope at its September or October 2010 Board meeting.

### **Concern No. 7: El Monte Transit Center Gas Line Relocation**

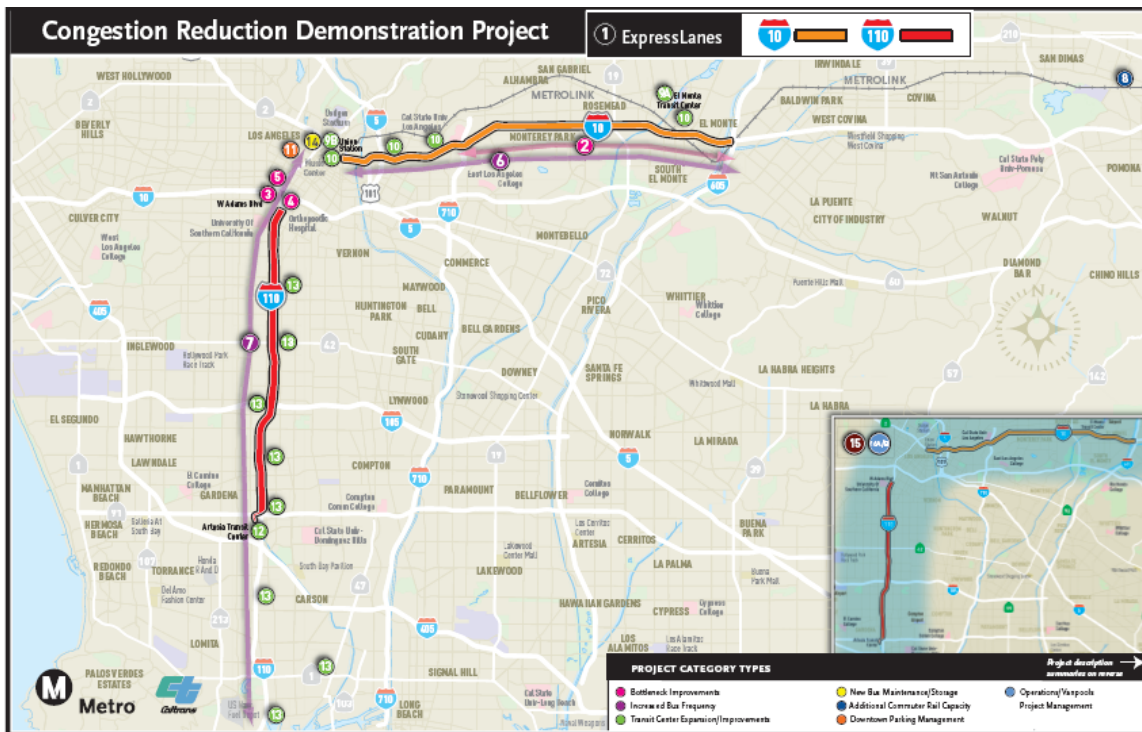
**Status/Action** A 20" high pressure gas line needs to be re-located prior to construction of the El Monte Transit Center. The new alignment has been approved by the Gas Company and easement documents are in process and expected to be completed by the end of July. The Gas Company will not start construction of the new pipeline until the easements are in place. Relocation will take about 6 weeks. The schedule will not be impacted if construction of the gas line starts by mid-September.

### **Concern No. 8: Level Boarding at Metrolink Pomona Station**

**Status/Action** SCRRA continues discussions with FTA regarding the level boarding guidance at the Pomona Station concerning ADA compliance. SCRRA has submitted an explanation to FTA as to why neither level boarding nor multiple-highs are operationally feasible. SCRRA is awaiting a response from FTA to approve this project. Delay of approval by FTA could impact project design, schedule, and cost.



## PROJECT SCOPE



Los Angeles County Metropolitan Transportation Authority and Caltrans have partnered with Foothill Transit, Gardena Municipal Bus Lines, Los Angeles Department of Transportation, Southern California Regional Rail Authority (Metrolink) and Torrance Transit, to develop a package of solutions to increase traffic flow and provide travel options on the I-10 and I-110 freeways in Los Angeles County. These solutions will be incorporated into a one-year demonstration that will test new technologies to improve the existing transportation system called ExpressLanes.

The project goal is to improve mobility and provide congestion relief on the I-10 and I-110 freeways through the introduction of congestion pricing by converting High Occupancy Vehicle (HOV) Lanes to High Occupancy Toll (HOT) Lanes, improvements to the transit service along the freeways, transit facility improvements, increased funding for vanpools and the introduction of an intelligent parking management program, called ExpressPark, in downtown Los Angeles.

This project offers improved transportation options and a choice for drivers of single occupant vehicles (SOV) to pay to travel in a high occupancy lane. The general purpose lanes will not be tolled. The aim of the program is to foster incentives for sustainable change that creates travel time savings, increased trip reliability, cost savings, improved air quality and effectively manages our current roadway network.

## **PROJECT SCOPE (Contd)**

The features of the ExpressLanes project include:

### **1) TOLL INFRASTRUCTURE AND FREEWAY/ROADWAY IMPROVEMENTS**

- **I-10 HOV Conversion to HOT Lanes (I-605 to Alameda St./Union Station) and I-110 HOV Conversion to HOT Lanes (Artesia Transit Center to Adams Blvd.)** – an electronic toll collection system will be constructed that includes toll infrastructure, changeable message and static signage, transponders, cameras, back-office administration and management, CHP enforcement, and incident management response.
- **Add 2<sup>nd</sup> HOT Lane on I-10 (between I-605 and I-1710)** – a 2<sup>nd</sup> HOT lane will be added on the I-10 between I-605 and I-710 in both the eastbound and westbound directions. This will be accomplished by re-stripping the existing enforcement zone buffer and minor roadway widening.
- **Widen Adams Blvd. and Lane Modifications to Adams Blvd Off-Ramp** – modifications at Adams Blvd. include re-configuration to include two dedicated left turn lanes and one dedicated right turn lane. Widening of Adams Blvd. will require the sidewalk to be taken to add an additional dedicated right turn in the westbound direction. To replace the sidewalk, a pedestrian over-crossing will be constructed over the I-110 freeway on the north side of Adams Blvd.
- **Project Study Report (PSR): Adams Blvd.-Figueroa St. HOT Lane Flyover** – funding will be provided to Caltrans to perform a PSR to identify alternatives to connect from the northbound I-110 HOT Lanes to Figueroa St. The PSR will be coordinated with the Harbor Freeway Cap Park Feasibility Study lead by the City of Los Angeles.

### **2) TRANSIT SERVICE IMPROVEMENTS**

- **Enhanced Silver Line BRT and Feeder Services** – Funding will be provided to Metro for 41 new CNG buses to enhance service on the I-10 and I-110 and create a new dual-hub BRT. In addition, Foothill Transit will deploy 12 new buses, Gardena Transit will deploy 2 new gas-hybrid buses and Torrance Transit will deploy 4 new buses to improve additional commuter bus service on both the I-10 and I-110. During the 1-year Demonstration period, Foothill, Torrance and Gardena will also receive an operating subsidy for their expanded service.
- **Transit Signal Priority in Downtown Los Angeles** – The LADOT will install bus signal priority technology on Figueroa St. between Wilshire Blvd. and Adams Blvd. (15 signals) and Flower St. between Wilshire Blvd. and Olympic Blvd. (5 signals) to enhance transit operations. This project will also extend the existing AM peak-period northbound bus-only lane on Figueroa St. to cover the PM peak-period.

## **PROJECT SCOPE (Contd)**

- **Vanpools** – Activities to support the formation of 100 new vanpools include marketing and vanpool start-up costs such as training community groups to form commuter vanpools and ensure that vanpools are created and retained, ride-matching software, driver (or other empty seat subsidies), back-up driver training exams and parking lot leases.

### **3) TRANSIT FACILITY IMPROVEMENTS**

- **El Monte Transit Center Improvements** – a new 30-bay bus terminal will be constructed at the current El Monte Transit Center location to accommodate service improvements and expansion. This will add capacity for Metro's dual-hub BRT service and Foothill's Silver Streak service and will be LEED Gold Certified.
- **Patsouras Plaza Connector to the El Monte Busway** – the existing passenger boarding/alighting areas located at the corner of Alameda St. and the Busway entrance will be relocated to the south side of Patsouras Plaza to allow direct pedestrian access to the Plaza and Union Station.
- **Division 13 (formerly Union Division)** – a new bus operations and maintenance facility will be constructed adjacent to Metro headquarters. This new facility will house and operate a mixed fleet of approximately 200 CNG buses and will be built to accommodate 40-foot, 45-foot and 60-foot articulated buses. It will also include bus and automobile parking, administrative offices, a maintenance shop and all associated maintenance equipment and will be LEED Silver Certified.
- **Harbor Transitway Park and Ride Improvements** – improvements will include enhanced signage, lighting and security at 8 Park and Ride lots. A Sheriff's Substation will be constructed at Artesia Transit Center. New bike lockers will be installed and bus stops will be re-located for lines 108 and 115 so that they are under the Slauson and Manchester Transitway stations. And at the 37<sup>th</sup> Street Station translucent and architectural sound attenuation panels will be installed to reduce noise levels for waiting customers on the Harbor Transitway. Design of the panels is based on noise testing and analyses conducted by noise experts, the architecture of the station and Caltrans requirements. Before and after noise data will be collected to evaluate whether or not additional sound attenuation projects are implemented in the future at other freeway adjacent stations.
- **Pomona Metrolink Station Expansion** – this project consists of new pedestrian access improvements, 143 new parking spaces and the extension of the platform to accommodate additional rail cars at the Pomona (North) Metrolink Station that serves the San Bernardino Line. Operation of extended trains is projected to begin sometime in early 2011 on the San Bernardino Line.

### **4) DEMAND-BASED PARKING PRICING**

- **ExpressPark** – the LADOT will deploy new parking meter technology to 5,500 on-street metered parking spaces in the Central Business District, Chinatown, Civic Center, East Downtown, Little Tokyo and Washington/Broadway. These new meters

## **PROJECT SCOPE (Contd)**

will charge demand-based parking rates depending on the time of day and length of stay. They will also provide alternative payment options (i.e. credit card, cell phone). In addition to the on-street meters, occupancy reporting systems will also be implemented for the major City-owned off-street parking facilities (approx 7,500). Real-time parking information for 13,000 public on- and off-street parking spaces will be provided through various media including: websites, mobile phones, and on-street dynamic message signs.

**KEY MILESTONE SCHEDULE SIX-MONTH LOOKAHEAD**

	Milestone Date	Jun-10	Jul-10	Aug-10	Sep-10	Oct-10	Nov-10
<b>HOT Lane Project</b>							
Advertise DBOM RFP	06/04/10	M Metro					
Final Fact Sheets	08/01/10			◇			
Revise proposed power service locations	08/03/10			○			
Final addendum	08/04/10			M Metro			
Bidders Prepare Proposals	08/25/10			○			
Evaluate & Rank Proposals for Competitive Range	09/08/10				M Metro		
Oral Interview	09/20/10				M Metro		
Negotiate with Proposers in Competitive Range	10/26/10					M Metro	
Best Value Final Evaluation	11/09/10						M Metro
Draft and Issue Board Report	11/26/10						M Metro
<b>Transit Facilities Improvement</b>							
<b>Division 13 - New Construction</b>							
Metro 100% Design Review	06/22/10	M Metro					
Renderings for Construction Procurement	06/29/10	M Metro					
Metro Board Approval of DBOM Contract	07/30/10		M Metro				
Metro Prepare DBB Construction Bid Package	08/13/10			M Metro			
Bidders Prepare Proposals	10/15/10					M Metro	
Contractor Selection & Award Contract	11/05/10						M Metro
Construction NTP	11/23/10						M Metro
<b>Harbor Transit Way Improvement</b>							
Issue NTP Lighting & UPS	06/07/10	M Metro					
Award 37th St Sound Enclosure	07/30/10		M Metro				
Issue NTP Sound Enclosure	08/20/10			M Metro			
Advertise/Bid Eval/Award: Bus Stop Cutouts	10/20/10					M Metro	
Issue NTP Bus Cutouts	11/20/10						M Metro
<b>El Monte Transit Center</b>							
Award DB Contract	06/25/10	M Metro					
Issue NTP DB Contract	07/12/10		M Metro				
<b>Pastouras Plaza</b>							
Advertise DB Contract	07/30/10		M Metro				
DB Bids Due & Evaluation	10/29/10					M Metro	
Award DB Contract	11/15/10						M Metro
<b>M Metro</b>	Metro Milestone	○	Design/Build Constructors	△	Third Parties Approval		
<b>CT</b>	Caltrans Milestone	*	New Date	◇	FHWA Federal Highway Administration /FTA Federal Transportation Authority Approval		

PROJECT SUMMARY SCHEDULE

ExpressLanes Project		ExpressLanes Project																	
Activity ID	Activity Name	Orig. Dur.	Rem. Dur.	Start	Finish	2010			2011			2012			2013			2014	
						Q1	Q2	Q3	Q4	Q1	Q2	Q3	Q4	Q1	Q2	Q3	Q4	Q1	
	<b>ExpressLanes Project</b>	1935	936	Apr-04-06 A	Jan-31-14														
	Community Outreach	1073	906	Jun-08-09 A	Jan-31-14														
	I-10 & I-110 HOT Lanes	826	501	Apr-03-09 A	Jun-04-12														
	EIR Preparation and Approval	243	0	Jun-01-09 A	Jul-02-10 A														
	Design	340	36	Apr-03-09 A	Aug-20-10														
	Toll System Solicitation Planning	70	0	Apr-27-09 A	Jul-31-09 A														
	DBOM Contract Procurement	161	136	May-17-10 A	Jan-07-11														
	Civil Construction	681	501	Aug-23-09 A	Jun-04-12														
	Tolling Implementation	543	539	Jan-10-11	Feb-01-13														
	I-10 Rehab Construction (CALTRANS)	924	630	Mar-27-09 A	Dec-28-12														
	Transit Service Improvements (METRO)	338	256	Sep-11-09 A	Jul-07-11														
	Transit Facility Improvements (METRO)	1551	551	Apr-04-06 A	Aug-10-12														
	Metrolink Pomona Station Improvements	460	130	Jan-09-09 A	Dec-30-10														
	Transit Signal Priority in Downtown (LADOT)	415	240	Sep-15-09 A	Jun-14-11														
	ExpressPark (LADOT)	889	526	Mar-12-09 A	Jul-31-12														
	Vanpools	380	380	Feb-01-12	Aug-02-13														
	CRD Data Collection	502	502	Feb-01-12	Jan-31-14														

Project ID: HLane Current Phase

Data Date: Jul-02-10

Summary Schedule

Page 1 of 1

## **CRITICAL PATH NARRATIVE**

The Critical Path of the HOT Lanes DBOM contract runs through the Toll Implementation design/procurement/test related activities. The schedule assumes a one month end-to-end testing period for each of the corridors, following installation of the Toll Operation Service Center and two months of integrated test period for the entire system following the corridor-wide testing. Our design consultants have confirmed that those durations are adequate for the testing activities.

Staff continues to work with FTA/FHWA partners regarding the need for a schedule extension in order to ensure that the roadway improvements are completed prior to opening the HOT Lanes. Due to the high risk posed by the ongoing work being performed by the Caltrans I-10 Rehab contractor on the I-10 corridor, Metro is in discussions with FHWA to have the I-110 tolling operation open before the I-10 tolling operation. The DBOM RFP advertisement date has slipped due to the delayed approval of FHWA to allow it to be advertised.

Also FHWA has requested that they review and approve each amendment to the DBOM RFP before it is issued to the bidders. In addition, the HOT Lanes project has experienced a further delay in the completion of the final fact sheets which Caltrans and FHWA are in the process of reviewing. These delays have contributed to a project cost increase and an additional 2 more months to the projected 19 months requested schedule extension, which is now projecting a 21 month extension for opening the I-110 Hot Lanes, i.e. Oct. 1, 2012. The projected date for the opening of the I-10 Hot Lanes is now scheduled for Feb. 1, 2013. However, these dates are currently being analyzed, with the concurrence of USDOT, and will be finalized once the DBOM contract has been awarded.

### **I-10 Rehab Construction**

Caltran's I-10 Rehab contractor (Atkinson) provided Metro the latest schedule update, which shows a 3 month delay compared to the original baseline schedule. Metro revised Master Schedule to incorporate the phased opening site access window to meet the schedule requirement.

### **Transit Service Improvement**

Foothill, Gardena and Torrance Transit – No changes to the critical path.

### **Transit Facility Improvement**

El Monte Transit Center - No changes to the critical path.  
Pastaouras Plaza - No changes to the critical path.  
Harbor Transitway - No changes to the critical path.  
Division 13 Facility - No changes to the critical path.

## **CRITICAL PATH NARRATIVE (Contd)**

### **Metrolink Pomona Station**

No changes to the critical path.

### **Transit Signal Priority in Downtown**

Currently awaiting Caltrans approval for E-76 Authorization to Proceed with Construction. Bid advertisement and award may be delayed depending on E-76 approval date.

### **ExpressPark Project**

The projected start date of the Demo Evaluation Period is now August 1, 2011. The start date moves from July 1 to August 1, 2011 to allow time for approval of the PE 2 E-76. The E-76 must be approved before advertising the RFP.



**PROJECT COST STATUS**

CONGESTION REDUCTION DEMONSTRATION PROGRAM  
COMBINED COST REPORT BY PROJECT  
METRO CONSTRUCTION MANAGEMENT DIVISION

PERIOD ENDING: JUN 2010  
DOLLARS

PROJECT		NOTES	ADOPTED BUDGET	CURRENT FORECAST		COMMITMENTS		EXPENDITURES		BUDGET / FORECAST VARIANCE
				PERIOD	TO DATE	PERIOD	TO DATE	PERIOD	TO DATE	
CP 201059 - PROCURE 41 BUSES			28,317,164	-	28,317,164	-	27,806,434	-	27,214,037	-
CP 202001 - UNION DIVISION			95,000,000	-	95,000,000	60,816	13,976,356	225,463	8,277,473	-
CP 202286 - EL MONTE TRANSIT CTR & PATSOURAS CONNECTOR			60,106,000	-	60,106,000	259,233	5,495,250	316,595	3,541,331	-
CP 202287 - HARBOR TRANSITWAY IMPROVEMENTS			3,868,310	-	3,868,310	44,454	899,133	44,454	328,118	-
CP 210115 - BIKE LOCKERS			150,389	-	150,389	-	101,196	-	101,012	-
CP 210120 - TOLLTECHNOLOGY & ROADWAY IMPROVEMENTS		1	75,200,000	-	122,740,954	536,283	7,203,712	935,014	5,715,572	47,540,954
<b>METRO &amp; CALTRANS TOTAL</b>			<b>262,641,863</b>	<b>-</b>	<b>310,182,817</b>	<b>900,787</b>	<b>55,482,081</b>	<b>1,521,526</b>	<b>45,177,543</b>	<b>47,540,954</b>
<b>OTHER AGENCIES OR OTHER METRO COSTS:</b>										
METROLINK	POMONA METROLINK STATION - INC. PARKING	5	10,815,476	-	10,981,349	735,946	10,103,149	72,631	2,224,052	165,873
METRO	OPERATING SUBSIDY FOR DEMO		6,300,000	-	6,300,000	-	-	-	-	-
FOOTHILL TRANSIT	PROCURE 12 BUSES		7,500,000	-	7,461,000	3,723	7,280,460	3,890	3,890	(39,000)
FOOTHILL TRANSIT	OPERATING SUBSIDY FOR DEMO		3,200,000	-	3,200,000	-	-	-	-	-
TORRANCE TRANSIT	PROCURE 4 BUSES		4,000,000	-	4,000,000	-	4,000,000	-	-	-
TORRANCE TRANSIT	OPERATING SUBSIDY FOR DEMO		1,200,000	-	1,200,000	-	-	-	-	-
GARDENA TRANSIT	PROCURE 2 BUSES		1,200,000	-	1,200,000	-	1,183,043	-	-	-
GARDENA TRANSIT	OPERATING SUBSIDY FOR DEMO		600,000	-	600,000	-	-	-	-	-
LADOT	TRANSIT SIGNAL PRIORITY		1,130,000	-	1,129,561	1,013	493,393	1,013	493,393.00	(439)
METRO	FACILITY O&M		3,200,000	-	3,200,000	-	-	-	-	-
METRO	VANPOOLS		400,000	-	400,000	-	-	-	-	-
LADOT	EXPRESSPARK		18,500,000	-	19,383,049	(32,800)	98,000	(32,800)	98,000	883,049
<b>OTHER AGENCIES OR OTHER METRO COSTS:</b>			<b>58,045,476</b>		<b>59,054,959</b>	<b>707,882</b>	<b>23,158,045</b>	<b>44,734</b>	<b>2,819,335</b>	<b>1,009,483</b>
<b>TOTAL CRD PROGRAM:</b>			<b>2,3 320,687,339</b>	<b>-</b>	<b>369,237,776</b>	<b>1,608,669</b>	<b>78,640,126</b>	<b>1,566,260</b>	<b>47,996,878</b>	<b>48,550,437</b>

NOTE 1: \$75.2M ADOPTED BUDGET INCLUDES \$4.6M IN O&M COSTS.  
 NOTE 2: ADOPTED BUDGET OF APPROXIMATELY \$320M IS THE \$290M BOARD APPROVED IN SEP-08 PLUS PARTNER LOCAL MATCH AND OTHER NON-CRD FUNDS TO BE USED IN CRD PROGRAM.  
 NOTE 3: CURRENT FORECAST SHOWN REQUIRES BOARD APPROVAL BECAUSE IT EXCEEDS ADOPTED BUDGET. METRO WILL SECURE ADDITIONAL NON-CRD/UPA FUNDING SOURCES TO ADDRESS THE SHORTFALL OR REDUCE/DEFER SCOPE.  
 NOTE 4: EXPENDITURES ARE CUMULATIVE THROUGH MAY 31, 2010  
 NOTE 5: POMONA METROLINK STATION FORECAST INCLUDES OPTION FOR 143 PARKING SPACES.

**FINANCIAL/GRANT STATUS – ORIGINAL SCOPE ACTIVITIES**

**METRO EXPRESSLANES PROJECT  
(IN MILLIONS OF DOLLARS)**

**JUNE 2010**

**STATUS OF FUNDS BY SOURCE**

PROJECT	FUNDING SOURCES						CURRENT FORECAST	(A) APPROVED BUDGET	TOTAL FUNDS AVAILABLE (exc Local Funds)
	FED CMAQ TRANSIT	FED CMAQ HIGHWAY	FED FTA 5307	STATE SLPP	LOCAL FUNDS	NON CRD FUNDS			
METRO BUS PROCUREMENT	\$0.000	\$0.000	\$23.572	\$0.000	\$4.745	\$0.000	\$28.317	\$28.400	\$23.572
UNION DIVISION	\$0.000	\$0.000	\$0.000	\$0.000	\$0.000	\$95.000	\$95.000	\$80.000	\$17.193
EL MONTE TRANSIT CTR & PATSAOURAS CONNECTOR	\$0.000	\$0.000	\$42.900	\$0.000	\$12.306	\$4.900	\$60.106	\$55.206	\$3.360
HARBOR TRANSITWAY IMPROVEMENTS	\$0.000	\$0.000	\$3.120	\$0.000	\$0.748	\$0.000	\$3.868	\$3.850	\$2.000
BIKE LOCKERS	\$0.000	\$0.000	\$0.040	\$0.000	\$0.104	\$0.006	\$0.150	\$0.144	
TOLL TECHNOLOGY & ROADWAY IMPROVEMENTS	\$0.000	\$26.600	\$0.000	\$20.000	\$26.400	\$47.741	\$120.741	\$73.000	
METRO OPERATIONS & FACILITY O&M	\$6.300	\$3.200	\$0.000	\$0.000	\$0.000	\$0.000	\$9.500	\$9.500	
VANPOOLS	\$0.400	\$0.000	\$0.000	\$0.000	\$0.000	\$0.000	\$0.400	\$0.400	
BUS PROCUREMENT & OPERATIONS (OTHER AGENCIES)	\$5.000	\$0.000	\$11.500	\$0.000	\$0.000	\$1.161	\$17.661	\$16.500	
ADAMS FLYOVER PSR (CALTRANS)	\$0.000	\$0.000	\$0.000	\$0.000	\$2.000	\$0.000	\$2.000	\$2.000	
POMONA METROLINK STATION (SCRRRA)	\$0.000	\$0.000	\$4.480	\$0.000	\$1.120	\$5.381	\$10.981	\$5.600	
EXPRESS PARK (LADOT)	\$0.000	\$15.000	\$0.000	\$0.000	\$0.000	\$4.383	\$19.383	\$15.000	\$0.250
TRANSIT SIGNAL PRIORITY (LADOT)	\$0.000	\$1.000	\$0.000	\$0.000	\$0.000	\$0.130	\$1.130	\$1.000	\$0.750
<b>TOTAL FUNDS</b>	<b>\$11.700</b>	<b>\$45.800</b>	<b>\$85.612</b>	<b>\$20.000</b>	<b>\$47.423</b>	<b>\$158.702</b>	<b>\$369.237</b>	<b>\$290.600</b>	<b>\$47.125</b>

(A) Budget approved by Metro Board on September 2008. Expenditures are cumulative through May 2010.

PROJECT	FUNDING SOURCES - ACTUAL EXPENDITURES						TOTAL
	FED CMAQ TRANSIT	FED CMAQ HIGHWAY	FED FTA 5307	STATE SLPP	LOCAL FUNDS	NON CRD FUNDS	
<b>METRO BUS PROCUREMENT (CP 201059):</b>							
EXPENDITURES			\$22.588		\$4.626		\$27.214
BILLED TO FUNDING SOURCE			\$22.588		\$4.626		\$27.214
<b>UNION DIVISION (CP 202001):</b>							
EXPENDITURES						\$8.277	\$8.277
BILLED TO FUNDING SOURCE						\$8.141	\$8.141
<b>EL MONTE TRANSIT CTR &amp; PATSAOURAS CONNECTOR: (CP 202286)</b>							
EXPENDITURES			\$2.833		\$0.708		\$3.541
BILLED TO FUNDING SOURCE			\$2.561		\$0.640		\$3.201
<b>HARBOR TRANSITWAY IMPROVEMENTS (CP 202287):</b>							
EXPENDITURES			\$0.262		\$0.066		\$0.328
BILLED TO FUNDING SOURCE			\$0.254		\$0.063		\$0.317
<b>BIKE LOCKERS (CP 210115):</b>							
EXPENDITURES					\$0.101		\$0.101
BILLED TO FUNDING SOURCE					\$0.101		\$0.101
<b>TOLL TECHNOLOGY &amp; ROADWAY IMPROVEMENTS: (CP 210120)</b>							
EXPENDITURES					\$5.716		\$5.716
BILLED TO FUNDING SOURCE					\$5.630		\$5.630
<b>METRO OPERATIONS &amp; FACILITY O&amp;M:</b>							
EXPENDITURES							\$0.000
BILLED TO FUNDING SOURCE							\$0.000
<b>VANPOOLS</b>							
EXPENDITURES							\$0.000
BILLED TO FUNDING SOURCE							\$0.000
<b>BUS PROCUREMENT &amp; OPERATIONS (OTHER AGENCIES)</b>							
EXPENDITURES						\$0.004	\$0.004
<b>ADAMS FLYOVER PSR (CALTRANS):</b>							
EXPENDITURES							\$0.000
<b>POMONA METROLINK STATION (SCRRRA):</b>							
EXPENDITURES						\$2.224	\$2.224
<b>EXPRESS PARK (LADOT):</b>							
EXPENDITURES						\$0.098	\$0.098
<b>TRANSIT SIGNAL PRIORITY (LADOT):</b>							
EXPENDITURES						\$0.493	\$0.493
<b>TOTAL EXPENDITURES</b>	<b>\$0.000</b>	<b>\$0.000</b>	<b>\$25.683</b>	<b>\$0.000</b>	<b>\$11.217</b>	<b>\$11.096</b>	<b>\$47.996</b>

## **PROJECT COST ANALYSIS**

### **Adopted Budget**

The Adopted Budget reflects the Metro Board adopted Life-of-Project (LOP) Budget which was approved in September 2008 in the amount of approximately \$290 million plus partner local match and other Non-CRD Funds to be used in the CRD Program, bringing the total CRD Program Budget to approximately \$320 million.

### **Adopted Budget and Current Forecast**

The Current Forecast of approximately \$369 million (comprised of preliminary estimates) exceeds the Adopted Budget of \$320 million, which will require Board approval. Once the DBOM proposals are received and evaluated, Metro will secure additional non-CRD/UPA funding sources to address the shortfall or reduce/defer scope at its September or October 2010 Board Meeting.

### **Commitments**

The Commitments increased by \$1.609M this period primarily for Metro and other agency staff charges, and awarding of task orders to miscellaneous design and construction management consulting firms.

### **Expenditures**

Expenditures increased by \$1.566M this period primarily for expenditures for design and construction management consulting firms, and Metro and Other Agency staff labor charges. The \$48.0 million in Project Expenditures to date represents 15.0% of the Adopted Budget.

## **STATUS OF FUNDS ANTICIPATED**

### **FEDERAL CMAQ:**

Transit Signal Priority (LADOT): \$250,000 of CMAQ funds is available for drawdown.  
Express Park (LADOT): \$750,000 of CMAQ funds is available for drawdown.  
ExpressLanes (Metro): The E-76 for \$27.7M CMAQ funds has been submitted and obligation is expected by August 2010.

### **FEDERAL FTA 5307:**

Metro Bus Procurement: An FTA grant application of \$23.572M (CA-90-Y716) was awarded on July 2, 2009. Funds are available for drawdown.

El Monte Transit Center: An FTA grant application of \$2.160M (CA-90-Y716) was awarded on July 2, 2009. Funds are available for drawdown.

Patsaouras Connector: An FTA grant application of \$1.2M (CA-90-Y716) was awarded on July 2, 2009. Funds are available for drawdown.

Harbor Transitway Improvements: An FTA grant application of \$2.0M (CA-90-Y716) was awarded on July 2, 2009. Funds are available for drawdown.

Bus Procurement and Operations (Other Agencies):

Foothill Transit: A grant application for \$7.5M (CA-90-Y715) was submitted to the FTA on June 17, 2010.

Torrance Transit: A grant application for \$2.8M (CA-90-Y715) has been approved and funds are available for drawdown.

Gardena Transit: A grant application for \$969K (CA-90-Y707) has been approved and funds are available for drawdown.

Metrolink: A grant application for \$5.26M (CA-90-Y777) was submitted in June 2010. A separate grant for \$339K (CA-90-Y840) will be submitted in July 2010.

### **STATE SLPP:**

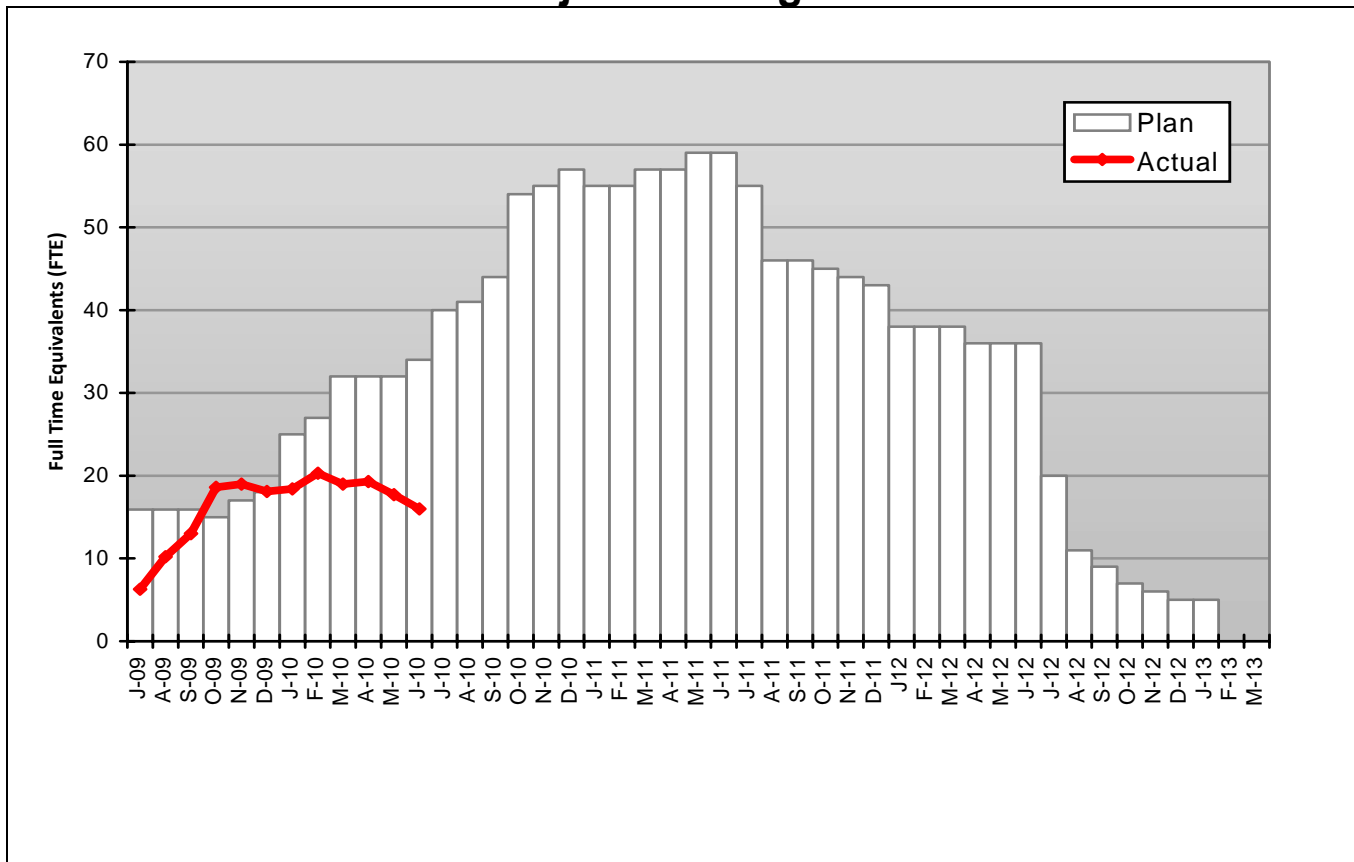
ExpressLanes (Metro): A request to allocate \$20M in SLPP Funds has been scheduled for approval at the August 2010 CTC meeting. Should SLPP funds not be available, CTC approval of a Letter of No Prejudice (LONP) is also scheduled for the August meeting.

### **NON CRD FUNDS:**

Division 13 Proposition 1B Funds: An initial \$4.99M funding request was approved by the State in February 2008. However, Metro's second funding request of \$12.7M has been put on hold pending resolution of the State budget or securing of alternative funding sources.

## STAFFING STATUS

### Total Project Staffing - FTEs



### Total Project Staffing

The Total Project Staffing Plan has been updated to reflect the current plan which includes the El Monte Transit Center, Patsaouras Plaza, Harbor Transitway and Union Division support staff. Actuals have also been retroactively adjusted. The difference in the planned and actual staffing is largely due to the Division 13 Project (formerly the Union Division), which has not been staffed as planned due to a delay in the design effort. The design effort has been extended approximately 4 months while the construction contract procurement process is on hold pending identification of funds.

**REAL ESTATE STATUS**

- Based on the latest development, the second Hot Lanes on I-10 EB has moved from west of I-710 to Fremont. Therefore, no freeway widening is required on the I-710 and in the City of Alhambra. The Hot Lanes Project will be built entirely within existing Caltrans ROW, no additional project ROW will be required.

**REAL ESTATE STATUS TO DATE**

Number of Parcels	Required	In Appraisal Process	Appraisal Process Complete	Offer Made	Closing	Acquired	Turned Over to Contractor
This Period	0	0	0	0	0	0	0
Last Period	0	0	0	0	0	0	0

## **ENVIRONMENTAL STATUS**

There are eight (8) projects that require environmental approval. The status of each is as follows:

- I-10 and I-110 HOV Conversion to HOT Lanes – EIR/EA. NEPA approval, with a Finding of No Significant Impact (FONSI), was received April 28, 2010. The environmental assessment was approved on May 14, 2010. CEQA approval is expected by the end of June 2010.
- Harbor Transitway Improvements – Listed Categorical Exclusion/Exemption, no approval required.
- El Monte Transit Center Improvements – Categorical Exclusion (NEPA)/Categorical Exemption (CEQA). Submitted September 2009. NEPA approved November 2009. CEQA approved December 2009.
- Patsaouras Plaza Connector – Categorical Exclusion (NEPA)/Categorical Exemption (CEQA). Metro is working with Caltrans to obtain CEQA approval. Once CEQA is approved Metro staff will use the CEQA approval as a basis for NEPA completion and obtain FTA sign-off.
- Division 13 (Union Division) – Categorical Exclusion (NEPA)/Categorical Exemption (CEQA). CEQA submitted August 2008 and approved September 2008. NEPA submitted and approved in December 2009.
- Transit Signal Priority – Categorical Exclusion (NEPA)/Categorical Exemption (CEQA). NEPA and CEQA approved September 2009.
- ExpressPark – Categorical Exclusion (NEPA)/Categorical Exemption (CEQA). NEPA and CEQA approved October 2009.
- Pomona Metrolink Station Improvements – Categorical Exclusion (NEPA)/Statutory Exemption (CEQA). NEPA and CEQA submitted November 2007. FTA requested more information in March 2010 and Metrolink staff is providing FTA with CE and Level Boarding updates.

## **COMMUNITY RELATIONS STATUS**

- During the month of June 2010, a total of 9 legislative briefings were provided to state legislators from the City of Los Angeles, San Gabriel Valley and South Bay.
- The total number of project briefings held from April 25, 2008 through June 30, 2010 is 175, as follows:
  - Project stakeholder briefings, technical advisory group meetings, live web chats, and community workshops: 127
  - Legislative briefings: 29
  - Corridor Advisory Group meetings: 11
  - Public hearings: 8

As of the end of June the *ExpressLanes* stakeholder database included 1,704 contacts.

## **QUALITY ASSURANCE STATUS**

- Gave presentation on quality program requirements at pre-proposal meeting for Metro LA CRD (ExpressLanes) Project.

## **SAFETY STATUS**

- No data available for June 2010.



**THIRD PARTY AGREEMENT STATUS  
THIRD PARTY ADMINISTRATION AGREEMENTS**

<b>Agency</b>	<b>Agreement Type</b>	<b>Purpose</b>	<b>Special Provisions</b>	<b>Funding Amount</b>	<b>Type of Funds</b>	<b>Completion Status</b>
Caltrans	Cooperative/ Funding Agreement	Outline roles; funding for environmental document and roadway improvements; Funding for Design/Construction Oversight and balance of Environmental Document	Includes Caltrans Review/ Approval Deadlines	TBD	Capital	In Process
Caltrans	Encroachment Permit				Capital	In Process
Expo	MOU	Overcrossing at Adams to Exposition			Capital	Completed
LADWP	Electrical Service Agreement	Drops by PB/IBI Application Only			Capital	
So Cal Edison	Electrical Service Agreement	Drops by PB/IBI Application Only			Capital	
City of Los Angeles	Amendment to Master Cooperative Agreement	Design Review for Adams Blvd. and POC		TBD	Capital	In Process
County of Los Angeles	Amendment to Master Cooperative Agreement	Design Review		TBD	Capital	In Process
SCRRRA	MOU	Design Review		TBD	Capital	In Process

**AGENCY NOISE AGREEMENTS**

<b>Agency</b>	<b>Agreement Type</b>	<b>Purpose</b>	<b>Special Provisions</b>	<b>Funding Amount</b>	<b>Type of Funds</b>	<b>Completion Status</b>
City of Los Angeles	Nighttime and Weekend Variance	Includes POC Bridge at Adams Blvd.			Capital	In Process
City of Monterey Park		Freeway Median Area	City Variance Not Required			N/A
City of Rosemead		Freeway Median Area	City Variance Not Required			N/A
City of El Monte		Freeway Median Area	City Variance Not Required			N/A
City of Baldwin Park		N/A	No Work in this Jurisdiction			N/A

**INTEROPERABILITY AGREEMENTS**

Agency	Agreement Type	Purpose	Special Provisions	Funding Amount	Type of Funds	Completion Status
Bay Area Toll Authority	User Fee Agreement	User Fee (Title 21 Interoperability)		\$0	Operating	Not Started
Golden Gate Bridge, Highway & Transportation District	User Fee Agreement	User Fee (Title 21 Interoperability)		\$0	Operating	Not Started
Orange County Transportation Authority	User Fee Agreement	User Fee (Title 21 Interoperability)		\$0	Operating	Not Started
San Diego Association of Governments	User Fee Agreement	User Fee (Title 21 Interoperability)		\$0	Operating	Not Started
SR125 Southbay Expressway, Chula Vista	User Fee Agreement	User Fee (Title 21 Interoperability)		\$0	Operating	Not Started
TCA	User Fee Agreement	User Fee (Title 21 Interoperability)		\$0	Operating	Executed 6/8/10

**OPERATIONS AND MAINTENANCE AGREEMENTS**

Agency	Agreement Type	Purpose	Special Provisions	Funding Amount	Type of Funds	Completion Status
Caltrans	Cooperative Agreement	Outline roles for operations and maintenance of HOT Lanes		\$0	Operating	In Process
Caltrans	Joint Use Agreement	Advisory Committee & Sec. 166 Definitions			Operating	
CHP	MOU	Dedicated Enforcement: 4 vehicles	Data Collection Requirement	\$500,000 CMAQ or Toll Revenues	Operating	In Process
DMV	Requestor Account	Allows access to DMV records	None	\$250	Operating	Not Started
USDOT	Tolling Agreement	Comply w/USC 166		\$0	Operating	In Process
TCA	License Agreement	FasTrak Logo License	None	\$1	Operating	Executed 6/8/10
MTA	FSP Agreement	Amend FSP Agreement for dedicated trucks			Operating	Not Started
MTA	Collection Agency Agreement				Operating	Not Started
MTA	MOU	Non Revenue Usage MOUs	Required for various agencies		Operating	Not Started
MTA	Welcome Package	Materials needed for new Customer Welcome Package			Operating	Not Started

**TRANSIT IMPROVEMENT AGREEMENTS**

Agency	Agreement Type	Purpose	Special Provisions	Funding Amount	Type of Funds	Completion Status
Caltrans	Cooperative Agreement	Patsaouras Plaza		TBD	Capital	In Process
Caltrans	MOU	El Monte Transit Center		N/A	Capital	In Process
Caltrans	MOU	Harbor Transitway		N/A	Capital	Executed April 2010
LADWP	Electrical Service Agreement	Drops by Application Only			Capital	
So Cal Edison	Electrical Service Agreement	Drops by Application Only			Capital	

**FUNDING AGREEMENTS**

Agency	Agreement Type	Purpose	Special Provisions	Funding Amount	Type of Funds	Completion Status
Caltrans	Cooperative Agreement	Initial Study for Environmental Document		\$200,000 Prop C	Capital	Executed June 2009
Foothill Transit Agency	LOA	Purchase 10 42' buses and funding for 1 year operating subsidy	Data Collection Requirement	\$7,461,000 FTA 5307 \$3,200,000 CMAQ	Capital and Operating	Executed August 2009
Foothill Transit Agency	LOA – Amendment #1	Purchase of 2 additional buses	No Additional Operating Subsidy	\$7,461,000 FTA 5307 \$3,200,000 CMAQ	Capital and Operating	Executed November 2009
Gardena Municipal Bus Lines	LOA	Purchase 2 gas/hybrid buses and funding for 1 year operating subsidy	Data Collection Requirement	\$1,200,000 FTA 5307 \$580,187 CMAQ	Capital and Operating	Executed September 2009
Torrance Transit	LOA	Purchase 4 buses and funding for 1 year operating subsidy	Data Collection Requirement	\$2,800,000 FTA 5307 \$1,160,373 CMAQ	Capital and Operating	Executed July 2009
Los Angeles Department of Transportation	LOA	Intelligent Parking Management Program	Data Collection Requirement	\$15,000,000 CMAQ	Capital	Executed August 2009
Los Angeles Department of Transportation	LOA	Install Transit Signal Priority in Downtown Los Angeles	Data Collection Requirement	\$1,000,000 CMAQ	Capital	Executed August 2009
Southern California Regional Rail Authority	LOA	Construct 100 parking spaces and expand platform at the Metrolink Pomona Station	Data Collection Requirement	\$4,480,000 FTA 5307 \$1,120,000 Prop C 10%	Capital	Executed August 2009

**FUNDING AGREEMENTS**

Agency	Agreement Type	Purpose	Special Provisions	Funding Amount	Type of Funds	Completion Status
USDOT	MOU	Award CRD funding for I-10 and SR-210 Demonstration Project	Tolling Authority Required by 10/15/08; Revenue Operations by 12/31/10	\$213.6 Million FTA 5309	Capital	Executed April 2008
USDOT	MOU – Amendment #1	Shift from SR-210 to I-110 and I-10 Demonstration Project	Tolling Authority Required by 10/15/08; Revenue Operations by 12/31/10	\$210.6 Million FTA 5309	Capital	Executed July 2008
USDOT	MOU – Amendment #2	Administrative Amendment/ Reconcile MOU with Tolling Authority Legislation	Capacity Improvements by 12/31/08; Revenue Operations by 12/31/10	\$210.6 Million FTA 5309	Capital	Executed November 2008
USDOT	MOU – Amendment #3	Amendment #3 for Schedule Extension		\$210.6 Million FTA 5309	Capital	In Process

**DBOM CONTRACTOR RESPONSIBILITY**

Agency	Agreement Type	Purpose	Special Provisions	Completion Status
FCC	License Agreement	Needed for Operation of Fastrak Transponders?	DBOM Contractor to secure	
TBD	Maintenance Agreement	Toll Electrical and Equipment Maintenance	DBOM Contractor to secure	
TBD	Facility Lease	Needed for Customer Service Center	DBOM Contractor to secure	
TBD	Credit Card/Bank Processing Agreements		DBOM Contractor to secure	
TBD	Website Hosting Agreement		DBOM Contractor to secure	
TBD	Phone/ Internet Service Agreement		DBOM Contractor to secure	
TBD	Mail Processing Agreement		DBOM Contractor to secure	
TBD	Armored Car Service Agreement		DBOM Contractor to secure	

## **CHRONOLOGY OF EVENTS**

April 24, 2008	MOU w/USDOT for \$210 million Grant Award (I-210/I-10).
July 23, 2008	CTC Eligibility Finding.
July 24, 2008	1 <sup>st</sup> Amendment to MOU w/USDOT (Changes Demo Project from I-210/I-10 to I-110/I-10).
August 24, 2008	Preliminary Concept of Operations for I-10 and I-110.
September 28, 2008	State Tolling Authority Legislation Approved (Expires 1/15/13).
September 29, 2008	Metro/Caltrans certify funding available for ExpressLanes.
November 24, 2008	2 <sup>nd</sup> Amendment to MOU w/USDOT (administrative changes).
December 4, 2008	ExpressLanes Project Inclusion in RTP approved.
December 22, 2008	Key Physical Capacity Improvements identified to USDOT.
January 14, 2009	FTIP approved: Amend #1 to the RTP and Amend 08-01 to 2008 RIP.
January 22, 2009	Public Outreach & Communications Plan approved by Metro Board.
February 17, 2009	RFIQ for Toll Systems Integrator released.
April 15, 2009	Preliminary Engineering begins for Electronic Toll Collection.
May 4, 2009	Short List of Toll Systems Integrator Firms completed.
June 22, 2009	Public Hearings for Toll Rates (6).
July 23, 2009	Toll Rates and Toll Policy adopted.
January 20, 2010	Metro Board Approved USDOT National Evaluation Plan.
February 12, 2010	Circulation of the Draft EIR/EA for the the I-10 and I-110.
March 9 & 10, 2010	Public hearings held for the draft EIR/EA for I-10 and I-110.
March 25, 2010	Metro Board Approved Low Income Commuter Assessment.

## **CHRONOLOGY OF EVENTS**

April 7, 2010	CTC Authorizes Design-Build Authority for I-10 and I-110 HOT Lanes.
April 22, 2010	Metro Board Approved Administrative Account Fee Schedule.
April 28, 2010	EIR/FONSI for the I-10 and I-110 HOT Lanes is approved. Project Oversight Agreement Executed.
May 14, 2010	Environmental Assessment for the I-10 and I-110 HOT Lanes is approved.
June 7, 2010	DBOM RFP released.
June 16, 2010	Issued DBOM RFP Addendum #1.

**LA CRD PRE-DEPLOYMENT DATA COLLECTION**

**Silver Line Ridership**

<b>Month</b>	<b>Average Weekday Boardings</b>	<b>% Change from Jan. 2010</b>	<b>Average Saturday Boardings</b>	<b>Average Sunday Boardings</b>
Dec. 2009*	4,208	--	969	1,335
Jan. 2010	6,612	--	2,231	1,411
Feb. 2010	6,974	5.47%	2,489	1,768
Mar. 2010	7,170	8.44%	2,566	1,805
Apr. 2010	7,173	8.48%	2,860	1,744
May 2010	7,422	12.25%	2,758	1,895
June 2010	7,227	9.30%	2,880	1,929

\*Silver Line started operation on 12/13/09 so ridership estimate represents partial month.

**El Monte Transit Center Parking Data**

<b>Date of Count</b>	<b>Time of Count</b>	<b>Count</b>	<b>Total Capacity</b>	<b>% Utilization</b>
Jan. 12, 2010	10:30 AM	1,486	1,761	84.38%
June 10, 2010	11:45 AM	1,492	2,069	72.11%

**Harbor Transitway Parking Data**

<b>Date of Count</b>	<b>Time of Count</b>	<b>Count</b>	<b>Total Capacity</b>	<b>% Utilization</b>
June 10, 2010	10:00 AM	606	1,862	32.55%

**LA CRD PRE-DEPLOYMENT DATA COLLECTION**

**Pomona Metrolink Station Parking Data**

<b>Date of Count</b>	<b>Time of Count</b>	<b>Count</b>	<b>Total Capacity</b>	<b>% Utilization</b>
Sept. 16, 2009	10:45 AM	230	230	100%
Oct. 21, 2009	10:30 AM	230	230	100%
Nov. 18, 2009	10:15 AM	230	230	100%
Dec. 16, 2009	10:45 AM	230	230	100%
Jan. 20, 2010	10:00 AM	230	230	100%
Mar. 17, 2010	10:15 AM	230	230	100%
Apr. 21, 2010	10:30 AM	230	230	100%
May 19, 2010	10:15 AM	230	230	100%
June 9, 2010	1:00 PM	307	372	82.53%

**Metrolink San Bernardino Line Boardings**

<b>Date</b>	<b>Boardings</b>	<b>% Change from Previous Month</b>
June 2009	6,264	--
July 2009	6,185	-1.26%
August 2009	5,969	-3.49%
September 2009	6,028	0.99%
October 2009	6,122	1.56%
November 2009	5,915	-3.38%
December 2009	5,501	-7.00%
January 2010	5,750	4.53%
February 2010	5,762	0.21%
March 2010	5,959	3.42%
April 2010	5,911	-0.81%
May 2010	5,854	-0.96%



## **APPENDICES**

### **COST AND BUDGET TERMINOLOGY**

**ADOPTED BUDGET:** The Approved Project Budget as established by Metro Board of Directors at the time it authorizes Construction Project Management Division to commence full design and construction of the project (Project Adoption).

**CURRENT FORECAST:** Evaluation of costs to go combined with actual expenditures.

**COMMITMENTS:** The total of actual contract awards, executed change orders or amendments, approved work orders of Master Cooperative Agreements, offers accepted for purchase of real estate, and other Metro actions which have been spent or result in the obligation of specific expenditures at a future time. Also includes commitments reported by other agencies.

**EXPENDITURES:** The total dollar amount of funds expended by Metro for contractor or consultant invoices, third party invoices, staff salaries, real estate and other expenses that is reported in Metro's Financial Information System (FIS and expenditures reported by other agencies.

**APPENDIX**  
**LIST OF ACRONYMS**

ARRA	American Recovery & Reinvestment Act
AWIS	Automated Work Zone Information Systems
BRT	Bus Rapid Transit
CADD	Computer Aided Drafting and Design
CALTRANS	California Department of Transportation
CCTV	Closed Circuit Television
CD	Calendar Day
CDFG	California Department of Fish and Game
CM	Construction Manager
CMAC	Congestion Mitigation Air Quality
CMIA	Cash Management Improvement Act
CMS	Changeable Message Signs
CN	Change Notice
CNG	Natural Gas
CO	Change Order
COE	Corps of Engineers
COLA	City Of Los Angeles
CONOPS	Concept of Operations
CPM	Critical Path Method
CPUC	California Public Utilities Commission
CR	Camera Ready
CRD	Congestion Reduction Demonstration
CTC	California Transportation Commission
D-B	Design-Build
D-B-B	Design-Bid-Build
DBOM	Design, Build, Operate and Maintain
DD	Design Development
DEIR	Draft Environmental Impact Report
DWP	Department of Water and Power
EA	Environmental Assessment
EIR	Environmental Impact Report
EIS	Environmental Impact Statement
FD	Final Design
FEIR	Final Environmental Impact Report
FHWA	Federal Highway Administration
FIS	Financial Information System
FOCT	Fiber Optics Cable Transmission System
FTE	Full Time Equivalent
GDSR	Geotechnical Design Summary Report
GSA	General Services Administration
GSRD	Gross Solids Removal Devices
HAR	Highway Advisory Radio

**APPENDIX**  
**LIST OF ACRONYMS (Continued)**

HOT	High Occupancy Toll
HOV	High Occupancy Vehicle
IFB	Invitation for Bid
IPO	Integrated Project Office
ITS	Intelligent Transportation Systems
LA	Los Angeles
LABOE	Los Angeles Bureau of Engineering
LACFCD	Los Angeles County Flood Control District
LADOT	Los Angeles Department of Transportation
LADPW	Los Angeles Department of Public Works
LADWP	Los Angeles Department of Water and Power
LARTMC	Los Angeles Regional Transportation Management Center
LFAT	Local Field Acceptance Test
LNTP	Limited Notice To Proceed
LONP	Letter Of No Prejudice
LOP	Life of Project
MCA	Master Cooperative Agreement
METRO	Los Angeles County Metropolitan Transportation Authority
MIS	Major Investment Study
MOT	Maintenance of Traffic
MOU	Memorandum of Understanding
MPSR	Monthly Project Status Report
MVDS	Microwave Vehicle Detection System
MVP	Maintenance Vehicle Pullouts
MWD	Metropolitan Water District
N/A	Not Applicable
NEPA	National Environmental Protection Act
NHS	National Highway System
NOA	Notice of Award
NTE	Not to Exceed
NTP	Notice To Proceed
NTSC	National Television System Committee
P6	Primavera Project Planner® (scheduling software)
PC	Project Control
PE	Preliminary Engineering
PIP	Project Implementation Plan
PM	Project Manager
PMA	Project Management Assistance
PMP	Project Management Plan
P&P	Policies & Procedures
PR	Project Report
PS&E	Plans, Specs & Engineering

**APPENDIX**  
**LIST OF ACRONYMS (Continued)**

PSR	Project Study Report
QA	Quality Assurance
QAR	Quality Assurance Report
QC	Quality Control
QPSR	Quarterly Project Status Report
RFC	Request For Change or Released for Construction (based on context)
RFP	Request For Proposal
RMS	Ramp Metering Systems
ROM	Rough Order of Magnitude
ROW	Right-Of-Way
SIT	System Integration Testing
RSTP	Regional Surface Transportation Program
RWQCB	Regional Water Quality Control Board
SAFETEA- LU-	Safe, Accountable, Flexible, Efficient Transportation Equity Act: A Legacy for Users
SCE	Southern California Edison
SEMP	Systems Engineering Management Plan
SONET	Synchronous Optical Network
SOV	Single Occupant Vehicle
SOW	Statement Of Work
SP	Special Provision
TBD	To Be Determined
TCRP	Traffic Congestion Relief Program
TMS/CS	Traffic Monitoring Stations/Count Stations
TPM	Transportation Management Plan
UPS	Uninterrupted Power Supply
USDOT	United States Department of Transportation
VE	Value Engineering
WBS	Work Breakdown Structure
WP	Work Package