

TABLE OF CONTENTS

	Page No.
Project Overview.....	1
Management Issues.....	2
Project Status	
• Project Scope.....	3
• Schedule	
○ Key Milestones Six-Month Lookahead	4
○ Project Master Schedule Critical Path.....	5
○ Critical Path Narrative	6
• Project Cost Status.....	7
• Change Control Status.....	8
• Financial/Grant Status.....	9
• Staffing.....	10
• Real Estate.....	11
• Environmental.....	12
• Community Relations.....	12
• Quality Assurance.....	12
• Safety.....	12
• Third Party.....	13-14
Photographs (Project Renderings).....	15-17
Document Development Status.....	18
FFGA Application and Supporting Documents.....	19-20
Appendices.....	21-24

PROJECT OVERVIEW

The Eastside Light Rail Transit (Eastside LRT) Project is a six-mile, dual track light rail system with eight new stations and one station modification. The system originates at Union Station in downtown Los Angeles, where it connects with the Pasadena Gold Line, traveling generally east to Pomona and Atlantic Boulevards. The system will bridge State Route 101 Freeway and traverse the existing 1st Street Bridge over the Los Angeles River. The system will travel south on Alameda Street and then east on 1st Street with two stations at Alameda and Utah Streets. East of the Los Angeles River and 1st and Utah Streets, the alignment transitions to tunnel for approximately 1.8 miles, and continues beneath 1st Street to underground stations at 1st Street and Boyle Avenue and 1st Street and Soto Street. The alignment returns to the surface near the intersection of 1st Street and Lorena Streets, then jogs to the south, transitioning to follow 3rd Street with stations at Indiana Street, Ford Boulevard, Mednik Avenue and Pomona and Atlantic Boulevards.

Federal Transit Administration (FTA) approval to begin final design was issued on October 15, 2002. Even though this is later than the original planned date of mid-July, MTA staff was able to continue on the critical design items so that the critical path contract, Contract C0800 Tunnel and Station Excavation, would not be affected. The February 2003 bid opening date for Contract C0800 is still scheduled to occur per the original plan.

The schedule for Contract C0802 has been adjusted to meet Caltrans bid dates for the realignment of the 101 Freeway. Contract C0801 has been extended to March 2002 in order to update documents to reflect changes made to Contracts C0800 & C0802, and accommodate one final design review cycle and review by the Design/Build Advisory Panel. During this reporting period Eastside LRT Partners re-baseline the design effort to include the design modifications and new design completion dates. The design packages will complete without any impacts to the project schedule.

A Full Funding Grant Agreement (FFGA) kickoff meeting occurred on October 29, 2002 between FTA, MTA and the PMOC. The current plan is to submit the final FFGA application in February 2003 with a projected approval in August 2003. The project budget construction estimate will be supported by Contract C0800 bid prices and an independent cost estimate for Contracts C0801 and C0802. The cost of the project can then be finalized with the final FFGA application submittal.

A revised Letter of No Prejudice (LONP) was submitted to the FTA on October 22, 2002 clarifying MTA's original request for advancement of utility relocations. Approval from the FTA to incur cost up to \$1.9 million and to be eligible for reimbursement for the relocations are expected by November 5, 2002.

MANAGEMENT ISSUES

Resolved Item (Date Initiated: March 2002)

FEDERAL TRANSIT ADMINISTRATION (FTA) GRANTING MTA PERMISSION TO ENTER INTO FINAL DESIGN

Concern/Impact

It was anticipated that final design for two contracts, C0800 and C0802, would have begun by mid-July 2002 upon FTA granting permission to begin final design. To date, the FTA has not given the approval. Since Contract C0800 is on the project critical path, the projected Revenue Operations Date of October 2008 is at risk.

Status/Action

Approval to begin final design was received from the FTA on October 15, 2002. Critical work was able to continue uninterrupted while awaiting approval from FTA to begin final design and with no foreseen impacts to the Revenue Operation Date (ROD).

New Item (Date Initiated: October 2002)

FEDERAL TRANSIT ADMINISTRATION (FTA) APPROVAL OF THE LETTER OF NO PREJUDICE (LONP) FOR CERTAIN CRITICAL ITEMS

Concern/Impact

MTA is seeking authorization from the FTA to incur costs on certain critical path activities, with the understanding that these costs will become reimbursable as eligible expenses upon approval of a Full Funding Grant Agreement (FFGA). MTA is seeking approval from the FTA to proceed with these activities before the end of 2002 or risk jeopardizing the current projected Revenue Operations Date of October 2008.

Status/Action

A letter clarifying the original request for LONP dated August 23, 2002, particularly separating advancement of utility relocations, was sent on October 22, 2002. This revised request clarified the need for advancement of utility relocations prior to awarding the critical path contract, Contract C0800. Approval for the FTA to incur cost up to \$1.9 million and to be eligible for reimbursement for the relocations is expected by November 5, 2002.

PROJECT SCOPE

Contract C0802 – 101 Freeway Bridge

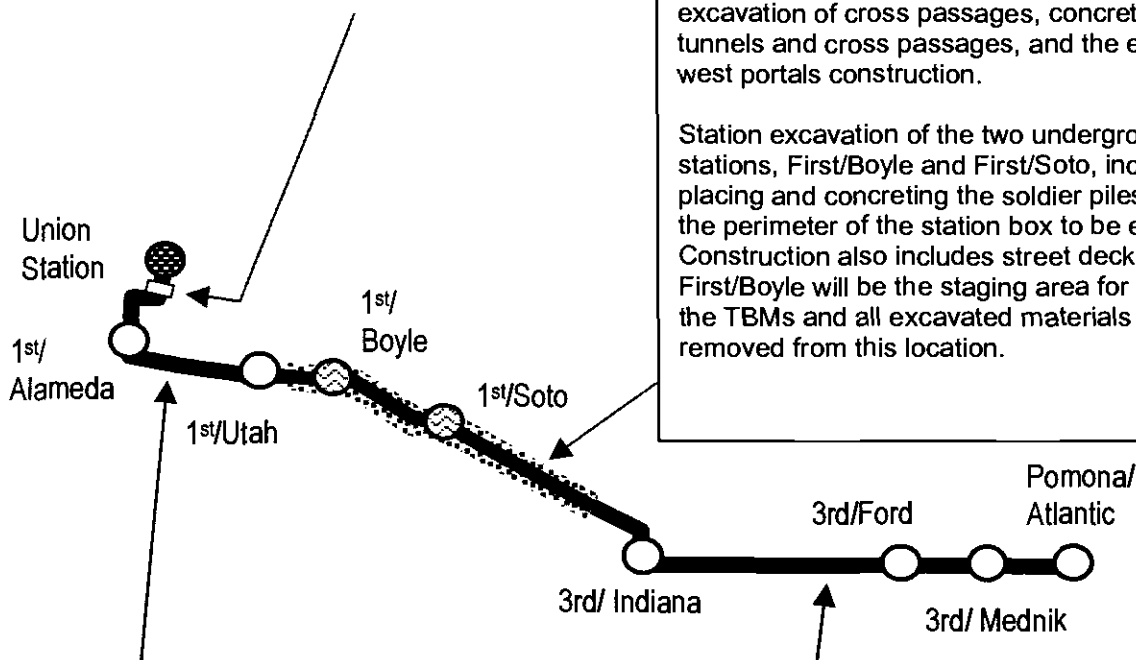
Overcrossing: The construction of the bridge will be combined with Caltrans freeway improvements project. While Caltrans will advertise and administer the construction, MTA will remain responsible for the design and construction costs of the bridge overcrossing.

Contract C0800 - Tunnel and Station

Excavation: This contract will be design/bid/build. The contractor will be selected utilizing a sealed bid, where the award will be based on the lowest priced technically qualified bid.

The start of tunnel construction is based upon the completion of final design, successful construction award and acquisition of full take real estate parcels. Construction of the 1.8 mile tunnel segment includes tunnel excavation using two Earth Pressure Balance Machines (EPBM) type, excavation of cross passages, concreting of the tunnels and cross passages, and the east and west portals construction.

Station excavation of the two underground stations, First/Boyle and First/Soto, include drilling, placing and concreting the soldier piles that line the perimeter of the station box to be excavated. Construction also includes street decking. First/Boyle will be the staging area for assembling the TBMs and all excavated materials will be removed from this location.




Contract C0801 - Stations, Trackwork, and Systems: This contract will be design/build. The contractor will be selected utilizing the two-step low bid procurement, following the guidelines set forth in the Federal Acquisition Regulations (FAR) Part 15 and requirements of California Public Utilities Code (CPUC) Section 130242.

The construction of each underground station will occur at the successful completion of the critical tunnel boring work under contract C0800. Construction of the two underground stations includes structural walls, station platforms, mezzanines, station entrances, and plazas, architectural finishes and all related mechanical and electrical work.

All six of the at-grade stations along the six-mile alignment will be constructed under this contract. This contract includes all the trackwork installation and testing for the entire alignment.

Systems installation and testing is inclusive of power systems, automatic train control, fire and emergency management, TRACS and communications systems. The contractor will be responsible for systems integration testing for the entire line segment prior to pre-revenue operations.

KEY MILESTONE SCHEDULE SIX-MONTH LOOKAHEAD

	Milestone Date	Oct-02	Nov-02	Dec-02	Jan-03	Feb-03	Mar-03
FTA Approval to Begin Final Design	10/15/02*	FTA					
FTA Approval of Letter of No Prejudice (LONP) - Advanced Utility Relocations	11/5/02*		FTA				
Caltrans Review/Approval PSR/ PR /ISA /TSR etc. - Tunnels under 101 Frwy (C0800)	11/8/02*		△				
Submit Applications to CPUC for Approval: 2nd Batch of Grade Crossings	11/15/02*		○				
Complete Design/Build Contract Documents & Issue Invitation for Bid (IFB) (C0800)	11/21/02*		◆				
Caltrans Review/Approve PSR/PR/ISA/TSR/etc. (excl. PS& E) - 101 Freeway Overcrossing (C0802)	12/1/02*			○			
P2550 Vehicles Bid Due	12/3/02*			◆			
Caltrans Review/Approve PS&E - Tunnel under 101 & I-5 Freeways (Contract C0800)	12/11/02			△			
Caltrans Review/Approve PSR/PR/ISA/TSR/etc.- Tunnels under I-5 Freeway (C0800)	12/12/02*			△			
Board Approve Ramona HS Site Selection and Agreement with LAUSD	12/12/02*						
FTA Approval of Letter of No Prejudice (LONP)	12/31/02*			FTA			
Caltrans Review/Approve PSR/PR/ISA/ TSR etc. - 60 Frwy Undercrossing (C0801)	1/6/03*				△		
Caltrans Review/Approve PSR/PR/ISA TSR/etc. - 710 Frwy Undercrossing (C0801)	1/13/03*				△		
Submit Applications to CPUC for Approval: Grade Crossings (Batches: 3rd thru 6th)	1/13/03				○		
Caltrans Review/Approve PS&E - 101 Frwy Overcrossing (Contract C0802)	1/14/03*				△		
MTA Issue Final FFGA Application	2/12/03					◆	
Complete Design/Build Contract Documents & Issue Invitation for Bid (Contract C0801)	3/10/03*						◆
Camera Ready - 101 Frwy Overcrossing Final Design (Contract C0802)	3/19/03*						○



MTA Staff Milestone



Other Agencies



Eastside LRT Partners Deliverables



New Date

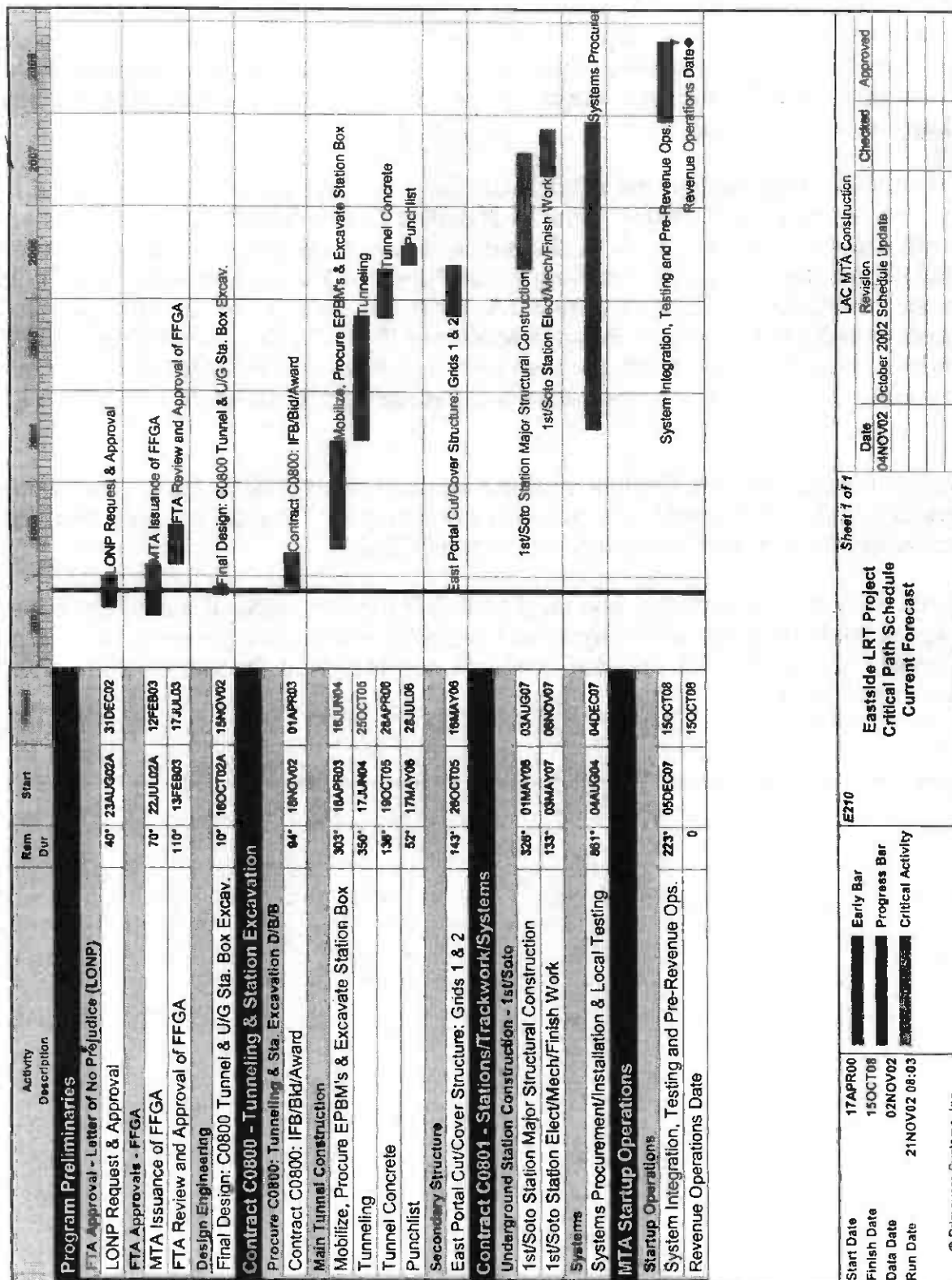
FTA

FTA Approval



MTA Board Approval

PROJECT MASTER SCHEDULE CRITICAL PATH



CRITICAL PATH NARRATIVE

After completion of preliminary engineering design, the critical path becomes the approval to begin final design. FTA's approval to begin final design of the tunnel, station excavation, and the 101 Freeway Overcrossing, was originally anticipated to occur in July 2002 but actually occurred on October 15, 2002.

After completion of final design, the critical path becomes the Bid and Award period of the tunneling contract (Contract C0800). Prior to awarding Contract C0800, it is anticipated that the FTA will accept MTA's Letter of No Prejudice to begin certain key critical procurement and construction activities prior to receiving a Full Funding Grant Agreement (FFGA). Upon the issuance of Notice To Proceed from MTA, there will be a 14-month lead time for the procurement of two Earth Pressure Balance Machines (EPBMs). Concurrent with the EPBM procurement period, the project will proceed with mobilization, pile installation, and station box excavations. The station box excavations are scheduled to complete prior to the EPBM delivery.

The critical path continues with EPBMs assemblies, excavation of both tunnels, excavation of crosspassages, and tunnel invert and walkway construction. The critical path then follows First/Soto underground station construction (Contract C0801).

The systems equipment installation and local testing is the last stage of the critical path prior to entering the final test stage where systems integration testing and pre-revenue operations are conducted. Based on the updated schedule, the Revenue Operations Date (ROD) is anticipated in late 2008.

PROJECT COST STATUS

COST SUMMARY

In \$ Million

Description	Previous Estimated Project Cost	Current Estimated Project Cost	Variance	Commitments	Expenditures
Guideways	209.4	209.4	0.0	0.0	0.0
Yards & Shops	6.3	6.3	0.0	0.0	0.0
Systems/Equipment	67.5	67.5	0.0	0.0	0.0
Stations	106.5	106.5	0.0	0.0	0.0
Vehicles	115.2	115.2	0.0	0.0	0.0
Special Conditions	89.9	89.9	0.0	3.9	1.1
Right-of-Way	42.2	42.2	0.0	28.0	0.1
Professional Services	172.9	172.9	0.0	47.0	29.8
Contingency	102.8	102.8	0.0	0.0	0.0
TOTAL	912.7	912.7	0.0	78.9	31.0

The Current Estimated Project Cost is based on the Interim Submittal Estimate dated April 2002, subsequently revised June 2002.

The current estimated project cost remains unchanged at \$912.7 million. Even though there are a few line items in which cost modifications are known, the total project cost will remain at the current level until February 2003. In February 2003 staff will submit the final FFGA application that will reflect all cost modifications known to date, plus reflect the independent cost estimates for Contracts C0801 and C0802 and the recommended award amount for Contract C0800. Receipt of contract bid proposals for Contract C0800 is planned for February 2003.

The items known to date, that will be affected are as follows:

- Increases to Real Estate Property Acquisitions
- Elimination of bus procurement for the project
- Reduction in the required number of Light Rail Transit vehicles

CHANGE CONTROL STATUS

	A	B		C		D=A+B+C	E		F=D+E
	Approved					Obligated	Potential		
Description	Award Amount	Executed Changes		LNTPs (NTE)		Total Approved Amount	Pending		Total Potential Value
		#	\$	#	\$		#	\$	
Engineering Design Services	18,929,502	9	9,642,668	3	0	28,572,170	2	18,000,000	46,572,170
Environmental Services	448,635	4	183,517	3	22,000	654,152	0	88,000	742,152
Project Management Assistance Support	166,366	7	3,256,556	0	0	3,422,922	0	0	3,422,922
TOTAL	19,544,503	20	13,082,741	6	22,000	32,649,244	2	18,088,000	50,737,244

The Potential Pending amount for Engineering Design Services increased this period by \$6.0 million. The increase is due to issuance of a Change Notice for Eastside Partners to re-baseline the design services contract.

FINANCIAL/GRANT STATUS

OCTOBER 2002

STATUS OF FUNDS BY SOURCE

in \$ millions

SOURCE	(B) TOTAL FUNDS ANTICIPATED	(C) TOTAL FUNDS AVAILABLE	(D) COMMITMENTS \$	(D/B) %	(E) EXPENDITURES \$	(E/B) %	(F) BILLED to FUNDING SOURCE \$	(F/B) %
FEDERAL - SECTION 5309 NEW START	547.2	5.9	5.9	1%	5.9	1%	5.9	1%
FED - SECTION 5309 FIXED GUIDEWAY	38.9							
FEDERAL - CMAQ	3.1			0%		0%		0%
STATE TCRP	236.0	45.0	67.7	29%	15.5	7%	15.5	7%
STATE STIP (STP)	4.6	4.6	4.6	100%	4.6	100%	4.6	100%
STATE STIP (SHA)	0.6	0.6	0.6	100%	0.6	100%	0.6	100%
PROPOSITION A 35% RAIL CAPITAL	72.2							
LEASE REVENUES	10.1							
UNBILLED ACCRUALS		4.4			4.4			
TOTAL	912.7	60.5	78.8	9%	31.0	3%	26.6	3%

(1) Based on March 2002 Section 5309 New Start Report

NOTE: EXPENDITURES ARE CUMULATIVE THROUGH SEPTEMBER 2002.

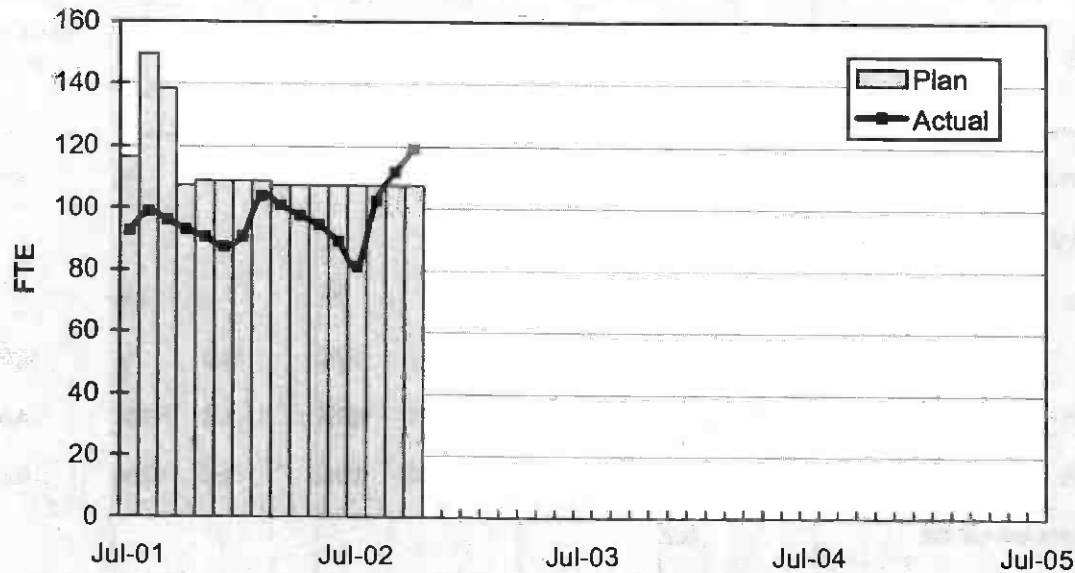
STATUS OF FUNDS ANTICIPATED

FEDERAL SECTION 5309: MTA submitted a grant amendment for \$7,425,098 in March 2002. Grant amendment was approved on September 19, 2002. Funds are available for draw down.

STATE TCRP: In April 2002, the CTC approved an MTA application and allocation request for \$25.5M of State TCRP funds for final design, right-of-way, and construction activities. Funds are available for draw down.

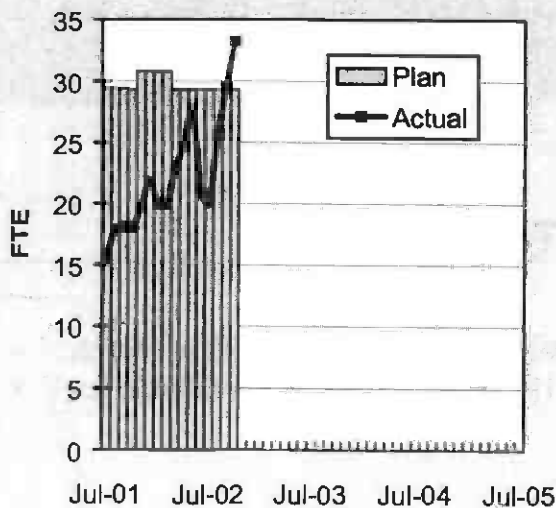
STAFFING STATUS

TOTAL PROJECT STAFFING

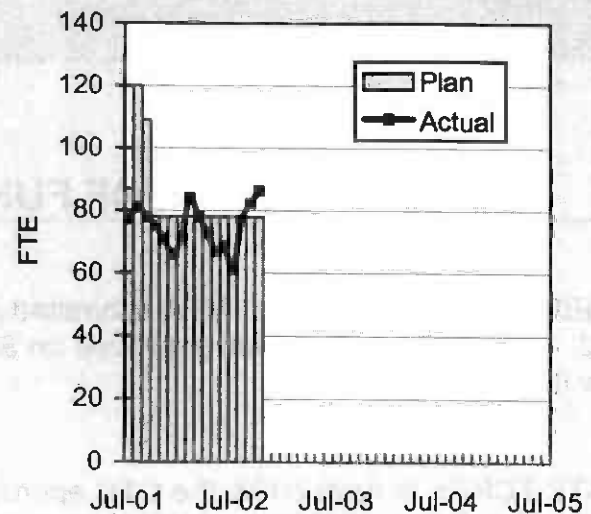


Staffing levels have increased steadily due to the preparation of the IFB package for Contract C0800 & the Industry Review package for Contract C0801.

AGENCY STAFFING



ESLRT PARTNERS



REAL ESTATE STATUS

- For C0800, the tunnel portion of the alignment, 42 parcels are required for acquisition (10 full takes, 16 sub-surface easements, 5 part takes, 6 sub-surface easements/building protection, 2 building protection, 1 street vacation and 2 permits from Caltrans which will be coordinated through MTA's Third Party Coordination).
- For C0801, the at-grade portion of the alignment, 33 parcels are required for acquisition (20 full takes, 8 partial takes, 3 street vacations, and 2 permits required from Caltrans which will be coordinated through the MTA's Third Party Coordination office). Nine parcels have been identified for the proposed Ramona High School site reconfiguration.
- For C0802, 3 parcels are required (one easement, one permit from Caltrans, and 1 full take parcel).
- Twenty-two parcels have been certified, eleven for C0800, ten for C0801 and one for C0802. Real Estate completed the appraisal and Phase 1 due diligence environmental work on required parcels located on First/Soto areas. Real Estate will complete making offers to respective property owners by mid-November.

REAL ESTATE ACQUISITION SCHEDULE SUMMARY

Number of Parcels	Required	Acquired	On Schedule	Behind Schedule	
				Number	Avg. Calendar Days
This Period	78	0	78	0	0
Last Period	62	0	62	0	0

REAL ESTATE STATUS TO DATE BY CONTRACT

Actual Parcels

Contract	No. of Parcels	Certified	Just Comp Approved	Offers Made	Agreements Signed	Condemnation	Parcels Available	Parcels projected to be unavailable by need date
C0800	42	11	8	8	0	0	0	0
C0801	33	10	0	0	0	0	0	0
C0802	3	1	0	0	0	0	0	0
TOTAL	78	22	8	8	0	0	0	0
Last Period Total	62	22	0	0	0	0	0	0

ENVIRONMENTAL STATUS

- MTA Environmental consultant, Ultrasystems, is preparing a Categorical Exclusion and Modified Initial Study/Addendum to the SEIS/SEIR for project enhancements to the Eastside LRT Project.

COMMUNITY RELATIONS STATUS

- Presented community relations issues to the monthly Review Advisory Committee Meeting (RAC) with local residents, business owners, elected representatives, and community organizations.
- Circulated construction notice for demolition of Ranch Market at First/Bailey.
- Continued work on the Area awareness Program for the pre-construction survey activity.
- Coordinated public outreach events with community representatives to facilitate public interest in the Eastside LRT Project.

QUALITY ASSURANCE STATUS

- Project Quality Management conducted surveillance S2002-105, Eastside Partners Design Review Process and Control of Open Items, Contract C0800. Results of the surveillance found that the Eastside Partners design review process and control of open items were in compliance with the Eastside Partners operating procedures. The surveillance also noted that a number of required design review activities were in process and yet to be completed.

SAFETY STATUS

- Construction Safety staff reviewed and revised contract specifications 01547 Worksite Security Requirements and Part N Alcohol and Drug-Free Workplace policy.

THIRD PARTY AGREEMENT STATUS

Third Party	Type of Agreement	Construction Need Date	Forecast Execution Date	Status/ Comments
City of Los Angeles	Amendment	4/16/03	12/21/02	1991 Master Cooperative Agreement (MCA) in effect for Design/Bid/Build contracts. MCA supplement for Design/Build contracts in final negotiations.
Los Angeles County	Master	7/03	1/3/03	MCA supplement Eastside LRT in final negotiations.
Caltrans (All Projects)	Master	4/16/03	12/1/02	Master Cooperative Agreement (MCA) completed. Document ready for signature pending Board approval.
Caltrans (101)	Design	5/03	1/03	C0802 101 Freeway Bridge Overcrossing Design Agreement negotiations completed. Document ready for signature pending Board approval.
Caltrans (101)	Construction	5/03	3/1/03	C0802 101 Freeway Bridge Overcrossing draft Construction Agreement due from Caltrans by November 22, 2002.
Caltrans (101)	Maintenance	N/A	1/1/04	Agreement being drafted by Caltrans
LADWP (Water)	Amendment	4/16/03	1/03	Draft amendment submitted.
LADWP (Power)	Amendment	4/16/03	1/03	Draft amendment submitted.
So. California Edison Company	Amendment	7/03	1/03	Draft amendment submitted.
The Gas Company	Amendment	4/16/03	1/03	Draft amendment submitted.
Pacific Bell	Amendment	4/16/03	1/03	Draft amendment submitted. Comments received from Pacific Bell.
Adelphia Cable Company	Amendment	4/16/03	1/03	Draft amendment submitted.
California Water Service Company	Master	4/16/03	1/03	Draft amendment submitted.
County Sanitation Districts of L.A. County	Amendment		1/03	Following legal concurrence of the boilerplate addendum a draft is being prepared.
MCI Worldcom	Amendment	4/16/03	1/03	Draft amendment submitted.
Metropolitan Water District	Amendment	4/16/03	1/03	Draft amendment submitted.
AT & T Local Services	Amendment	4/16/03	1/1/03	Facilities are now shown as being impacted by Eastside Construction. An amendment is being drafted.
GST	Amendment		3/1/03	Facilities are not impacted by Eastside Construction
Exxon Mobil Oil Company	Amendment		3/1/03	Facilities are not impacted by Eastside Construction
Pacific Pipeline Company	Amendment		3/1/03	Facilities are not impacted by Eastside Construction

THIRD PARTY AGREEMENT STATUS (Continued)

Third Party	Type of Agreement	Construction Need Date	Forecast Execution Date	Status/ Comments
Kinder Morgan Pipeline Company	Amendment		3/1/03	Facilities are not impacted by Eastside Construction
Tosco Refining Company	Amendment		3/1/03	Facilities are not impacted by Eastside Construction
Equilon Pipeline Company	Amendment		3/1/03	Facilities are not impacted by Eastside Construction
Level 3 Communications	Amendment		3/1/03	Facilities are not impacted by Eastside Construction
Verizon Wireless	Amendment		1/1/03	Facilities are now shown as being impacted by Eastside Construction. An amendment is being drafted
Broadwing Communications	Amendment		3/1/03	Facilities are not impacted by Eastside Construction
Eller Media	Amendment		3/1/03	Facilities are not impacted by Eastside Construction
Qwest-SP Telecom	Amendment		3/1/03	Facilities are not impacted by Eastside Construction

CURRENT PROJECT RENDERINGS



Computerized Rendering of Proposed
Eastside LRT Guideway Bridge at the
101 Freeway

CURRENT PROJECT RENDERINGS



CURRENT PROJECT RENDERINGS



Line Section at 1st Street Bridge



1st & Boyle Station Plaza

Document Development Status To Support Entry Into Final Design

DOCUMENT	STATUS	ESTIMATED/ACTUAL COMPLETION DATE
Value Engineering Report	Report is complete. Incorporation of Value Engineering will continue throughout design development.	August 2001
Quality Assurance/Quality Control Plan	Quality Program Policies and Procedures submitted to PMOC and FTA.	September 2001
Objectivity Analysis for PE/FD Contract	Analysis is complete.	January 2002
Capital and Operating Financial Plans	Submitted proposed plans to the FTA in August 2001. Revised capital plan will be submitted to the FTA.	March 2002
NEPA Process	MTA Board approved the Final SEIS/SEIR in February 2002.	March 2002
Project Management Plan (PMP)	Approval received by the PMOC.	August 2002
Rail Fleet Management Plan	A draft Rail Fleet Management Plan was submitted to the FTA and is currently under revision.	August 2002
Bus Fleet Management Plan	A draft Bus Fleet Management Plan was submitted to the FTA and is currently under revision.	August 2002

FFGA APPLICATION DOCUMENT CHECKLIST

SUPPORTING DOCUMENTS

DOCUMENT	AGENCY	TARGET DATE	STATUS/COMMENTS
Record of Decision/FONSI	FTA	Complete	June 2002
Annual Certifications/ Assurances	MTA	12/2/02	Roger Snoble to PIN in TEAM
Civil Rights Program Review	MTA	TBD	
Project Management Plan	MTA	8/02	FTA approved for current stage
Rail Fleet Management Plan	MTA	11/8/02	Under FTA review
Bus Fleet Management Plan	MTA	11/8/02	Under FTA review
Real Estate Acquisition Plan	MTA	8/02	FTA approved for current stage
Quality Management Plan	MTA	8/02	FTA approved for current stage
Before and After Study Plan	MTA	1/03	Submitted draft to FTA on 10/29
Value Engineering	MTA	8/01	
Financing Plan	MTA	1/03	Submit to FTA for review
Financial Capacity Review	FMO	2/03	Submit to FTA for review
Interagency Agreements including CPUC Oversight MOU	MTA	TBD	Revisions to existing agreements in progress
Environmental Permits & Biological Determination	TBD	TBD	TBD if needed
Spot Report (if needed)	FMO/PMO	TBD	
Submit System Safety Program Plan to CPUC	MTA	8/02	Under review by CPUC
Region IX to HQs FFGA Recommendation Memo	FTA	Early 4/03	
FTA letter to Congress	FTA	Late 5/03	
FTA Approval Letter to Grantee	FTA	7/03	
FSTIP Approval	SCAG	Complete	Included in 10/4/02 FSTIP
Department of Labor (13c) Certification	DOL	3/03	

FFGA APPLICATION DOCUMENTS

DOCUMENT	AGENCY	TARGET DATE	STATUS/COMMENTS
Part I – Full Funding Grant Agreement	FTA	3/03	
Attachment 1 – Scope of Project	MTA	10/29/02	Submitted draft to FTA
Attachment 1A – Project Map	MTA	10/29/02	Submitted draft to FTA
Attachment 2 – Project Description	MTA	10/29/02	Submitted draft to FTA
Attachment 3 – Baseline Cost Estimate	MTA	10/29/02	Submitted draft to FTA
Attachment 3A – Project Budget	MTA	10/29/02	Submitted draft to FTA
Attachment 4 – Baseline Schedule	MTA	10/29/02	Submitted draft to FTA
Attachment 5 – Schedule of Prior Grants and Related Documents	MTA	10/29/02	Submitted draft to FTA
Attachment 6 – Schedule of Capital New Starts Funds	MTA	10/29/02	Submitted draft to FTA
Attachment 7 – Measures to Mitigate Environmental Impacts	MTA	10/29/02	Submitted draft to FTA
Attachment 8 – Before and After Study	MTA	10/29/02	Submitted draft to FTA
Submittal of paper grant application (5309) and TEAM application (Part II – FFGA included)	MTA	2/03	
Congressional Review	Congress	4/03 – 7/03	
Review/Execution of FFGA	FTA/MTA	Early 8/03	

APPENDIX

COST AND BUDGET TERMINOLOGY

ESTIMATED PROJECT COSTS: Estimated project costs are based upon the current project cost estimates that are produced during the engineering design phase.

COMMITMENTS: The total of actual contract awards, executed change orders or amendments, approved work orders of Master Cooperative Agreements, offers accepted for purchase of real estate, and other LACMTA actions that will result in specific expenditures at a future time.

INCURRED COST: The total value of work performed to date of services received, and acquired materials or properties.

EXPENDITURES: The total dollar amount of checks written by LACMTA's Accounting department for contractor or consultant invoices, third party invoices, staff salaries, and closing payments for escrow accounts that is reported in LACMTA's Financial Information System (FIS).

CONSTRUCTION: Includes guideways, yards and shops, systems equipment, stations, and vehicles.

PROFESSIONAL SERVICES: Includes general engineering, construction management services, consultant design support services during construction, legal counsel, and agency (MTA staff) costs.

RIGHT-OF-WAY: Includes real estate appraisals, purchase cost of parcels, easements, right-of-entry permits, escrow fees, and tenant relocation.

UTILITY/AGENCY FORCE ACCOUNT: Includes work by outside agencies and utilities in design coordination and review.

CONTINGENCY: A fund established at the beginning of a project to provide for anticipated but unknown additional costs that may arise during the course of the project.

SPECIAL CONDITIONS: Includes utilities relocation, environmental compliance and mitigation, master cooperative agreements, insurance program, artwork, systems integration testing and pre-revenue operations.

APPENDIX

LIST OF ACRONYMS

AFE	Authorization For Expenditure
ATC	Automatic Train Control
CADD	Computer Aided Drafting and Design
CALTRANS	California Department of Transportation
CD	Calendar Day
CM	Construction Manager
CMAC	Congestion Mitigation Air Quality
CN	Change Notice
CO	Change Order
CPM	Critical Path Method
CPUC	California Public Utilities Commission
CR	Camera Ready
CTC	California Transportation Commission
CUD	Contract Unit Description
DB	Design/Build
DBB	Design/Bid/Build
DD	Design Development
DOT	Department of Transportation
DWP	Department of Water and Power
EIR	Environmental Impact Report
EIS	Environmental Impact Statement
EPBM	Earth Pressure Balance Machine
ESP	Eastside LRT Partners
FAR	Federal Acquisition Regulation
FD	Final Design
FEIS	Final Environmental Impact Statement
FEIR	Final Environmental Impact Report
FFGA	Full Funding Grant Agreement
FIS	Financial Information System
FSEIR	Final Supplemental Environmental Impact Report
FSEIS	Final Supplemental Environmental Impact Statement
FTA	Federal Transit Administration
FTE	Full Time Equivalent
GDSR	Geotechnical Design Summary Report
IFB	Invitation for Bid
IPO	Integrated Project Office
JV	Joint Venture
LA	Los Angeles
LABOE	Los Angeles Bureau of Engineering
LACFCD	Los Angeles County Flood Control District
LACMTA	Los Angeles County Metropolitan Transportation Authority
LADOT	Los Angeles Department of Transportation

APPENDIX

LIST OF ACRONYMS (Continued)

LADPW	Los Angeles Department of Public Works
LADWP	Los Angeles Department of Water and Power
LAUSD	Los Angeles Unified School District
LNTR	Limited Notice To Proceed
LONP	Letter Of No Prejudice
LRT	Light Rail Transit
L RTP	Long Range Transportation Plan
LRV	Light Rail Vehicle
MIS	Major Investment Study
MPSR	Monthly Project Status Report
MTA	Metropolitan Transportation Authority
N/A	Not Applicable
NEPA	National Environmental Protection Act
NPDES	National Pollution Discharge Elimination System
NTE	Not to Exceed
NTP	Notice To Proceed
OCIP	Owner-Controlled Insurance Program
P3	Primavera Project Planner® (scheduling software)
PC	Project Control
PE	Preliminary Engineering
PEER	Permit Engineering Evaluation Report
PGL	Pasadena Gold Line
PIP	Project Implementation Plan
PM	Project Manager
PMA	Project Management Assistance
PMIP	Project Management Implementation Plan
PMOC	Project Management Oversight Consultant
PMP	Project Management Plan (manual)
P&P	Policies & Procedures
PR	Project Report
PSR	Project Study Report
QA	Quality Assurance
QAR	Quality Assurance Report
QC	Quality Control
QPSR	Quarterly Project Status Report
RAC	Review Advisory Committee
RAG	Rail Activation Group
RFC	Request For Change
RFP	Request For Proposal
ROD	Record Of Decision
ROD	Revenue Operations Date
ROM	Rough Order of Magnitude

APPENDIX
LIST OF ACRONYMS (Continued)

ROW	Right-Of-Way
SCAQMD	Southern California Air Quality Management District
SCE	Southern California Edison
SCRRA	Southern California Regional Rail Authority
SHA	State Highway Account
SHPO	State Historic Preservation Office
SIT	System Integration Testing
SOV	Schedule Of Value
SOW	Statement Of Work
SP	Special Provision
STIP	State Transportation Improvement Program
STP	Surface Transportation Program
TBD	To Be Determined
TBM	Tunnel Boring Machine
TCRP	Traffic Congestion Relief Program
TPSS	Traction Power Substation
TRACS	Transit Automatic Control System
UFS	Universal Fare System
USDOT	U.S. Department Of Transportation
VE	Value Engineering
WBS	Work Breakdown Structure
WP	Work Package