

TABLE OF CONTENTS

| | Page No. |
|--|----------|
| Project Overview..... | 1 |
| Management Issues..... | 2 |
| Project Status | |
| • Project Scope..... | 3 |
| • Schedule | |
| ○ Key Milestones Six-Month Lookahead | 4 |
| ○ Project Master Schedule Critical Path..... | 5 |
| ○ Critical Path Narrative | 6 |
| • Project Cost Status..... | 7 |
| • Change Control Status..... | 8 |
| • Financial/Grant Status..... | 9 |
| • Staffing..... | 10 |
| • Real Estate..... | 11 |
| • Environmental..... | 12 |
| • Community Relations..... | 12 |
| • Quality Assurance..... | 12 |
| • Safety..... | 12 |
| • Third Party..... | 13-14 |
| • CPUC Crossing..... | 15 |
| FFGA Application and Supporting Documents..... | 16-17 |
| Contract P2550 Status | 18 |
| Photographs (Project Renderings)..... | 19-22 |
| Appendices..... | 23-26 |

PROJECT OVERVIEW

The Metro Gold Line Eastside Extension Project is a six-mile, dual track light rail system with eight new stations and one station modification. The system originates at Union Station in downtown Los Angeles, where it connects with the Pasadena Gold Line, traveling generally east to Pomona and Atlantic Boulevards. The system will bridge State Route 101 Freeway and traverse the existing 1st Street Bridge over the Los Angeles River. The system will travel south on Alameda Street and then east on 1st Street with two stations at Alameda and Utah Streets. East of the Los Angeles River and 1st and Utah Streets, the alignment transitions to tunnel for approximately 1.7 miles, and continues beneath 1st Street to underground stations at 1st Street and Boyle Avenue and 1st Street and Soto Street. The alignment returns to the surface near the intersection of 1st Street and Lorena Streets, then jogs to the south, transitioning to follow 3rd Street with stations at Indiana Street, Ford Boulevard, Mednik Avenue and Pomona and Atlantic Boulevards.

Technical qualifications were received on August 20, 2003 for Contract C0803 bid solicitation and are currently under review. The price bids for all three contracting opportunities are due in early November 2003. Bidders can bid C0800, C0801 or the combined work of C0800 and C0801.

The goal is to have the Full Funding Grant Agreement (FFGA) executed prior to contract award(s). If the FFGA is executed according to plan, then the construction Notice-To-Proceed(s) can be met in late December 2003.

Based on the award of a combined bid package of C0800 and C0801, ROD is forecasted to occur in December 2008. Based upon the award of separate packages, ROD is forecasted to occur in June 2009.

Advanced utility relocations are underway by Adelphia Cable, the Gas Company, Los Angeles Department of Water and Power (Power) and SBC.

MANAGEMENT ISSUES

There are no Management Issues this reporting period.

PROJECT SCOPE

Contract C0802 – 101 Freeway Bridge

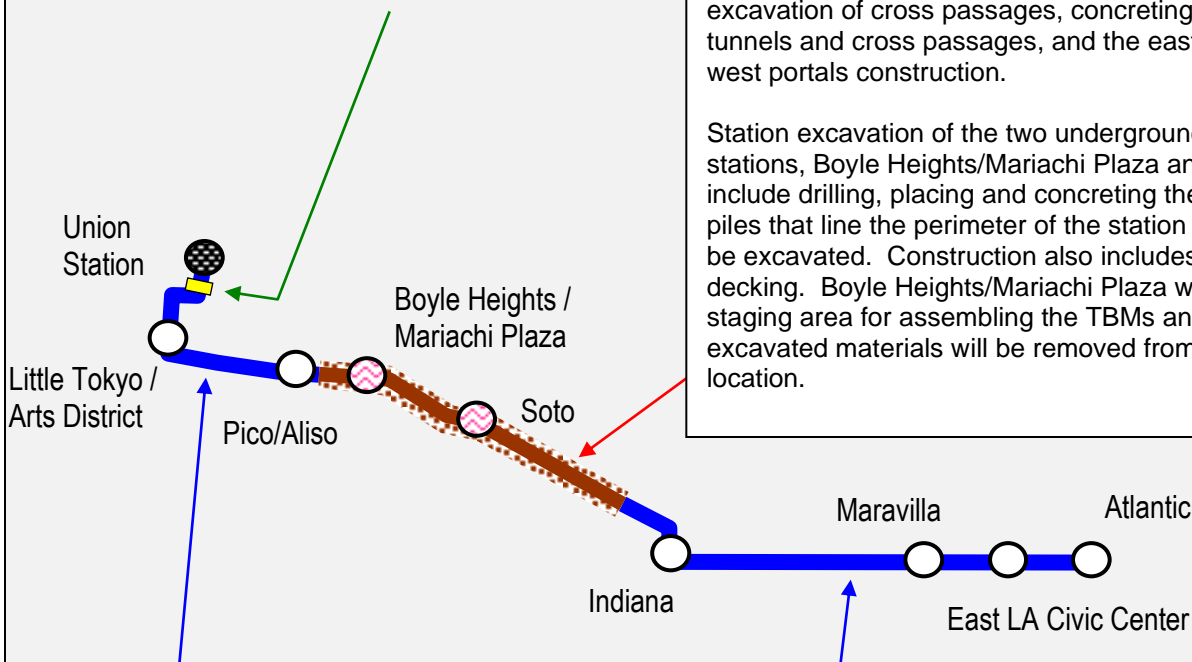
Overcrossing: The construction of the bridge will be combined with Caltrans freeway improvements project. While Caltrans will advertise and administer the construction, MTA will remain responsible for the design and construction costs of the bridge overcrossing.

Contract C0800 - Tunnel and Station

Excavation: This contract will be design/bid/build. The contractor will be selected utilizing a sealed bid, where the award will be based on the lowest priced technically qualified bid.

The start of tunnel construction is based upon the completion of final design, successful construction award and acquisition of full take real estate parcels. Construction of the 1.7 mile tunnel segment includes tunnel excavation using two Earth Pressure Balance Machines (EPBM) type, excavation of cross passages, concreting of the tunnels and cross passages, and the east and west portals construction.

Station excavation of the two underground stations, Boyle Heights/Mariachi Plaza and Soto, include drilling, placing and concreting the soldier piles that line the perimeter of the station box to be excavated. Construction also includes street decking. Boyle Heights/Mariachi Plaza will be the staging area for assembling the TBMs and all excavated materials will be removed from this location.



Contract C0801 - Stations, Trackwork, and Systems: This contract will be design/build. The contractor will be selected utilizing the two-step low bid procurement, following the guidelines set forth in the Federal Acquisition Regulations (FAR) Part 15 and requirements of California Public Utilities Code (CPUC) Section 130242.

The construction of each underground station will occur at the successful completion of the critical tunnel boring work under contract C0800. Construction of the two underground stations includes structural walls, station platforms, mezzanines, station entrances, and plazas, architectural finishes and all related mechanical and electrical work.

All six of the at-grade stations along the six-mile alignment will be constructed under this contract.

This contract includes all the trackwork installation and testing for the entire alignment.

Systems installation and testing is inclusive of power systems, automatic train control, fire and emergency management, TRACS and communications systems. The contractor will be responsible for systems integration testing for the entire line segment prior to pre-revenue operations.

Note: Contract C0803 encompasses work scope of both Contract C0800 and C0801.

KEY MILESTONE SCHEDULE SIX-MONTH LOOKAHEAD

| | Milestone Date | Aug-03 | Sep-03 | Oct-03 | Nov-03 | Dec-03 | Jan-04 |
|--|----------------|--------|--------|--------|--------|--------|--------|
| Caltrans Approved Roadway PS&E - 101 Freeway Overcrossing (C0802) | 8/11/03 | △ | | | | | |
| Technical & Qualification Bids Received - Contracts C0800, C0801 and C0803 | 8/20/03 | ◆ | | | | | |
| Final Package Submittal to CPUC: Grade Crossings (Batches: 10, 11, 15 & 16) | 8/29/03* | ◆ | | | | | |
| Notification of Qualification (Tech. Bids) - C0800, C0801 and C0803 | 9/10/03 | | ◆ | | | | |
| Final Package Submittal to CPUC: Grade Crossings (Batches: 4A, 6, 8, 9, 12, 13 & 14) | 9/12/03* | | ◆ | | | | |
| Caltrans Approve PSR/PR - 60 Freeway Undercrossing (C0801) | 9/22/03* | | △ | | | | |
| Caltrans Approve PSR/PR - Cut & Cover at 101 Freeway (C0800) | 9/30/03* | | △ | | | | |
| Price Bids Due - Contracts C0800, C0801 and C0803 | 11/9/03* | | | | ◆ | | |
| Congressional Review/Approval of FFGA | 11/19/03* | | | | ◆ | | |
| FTA Execute FFGA | 11/24/03* | | | | FTA | | |
| Award Contract C0800, C0801 and C0803 | 11/26/03* | | | | ◆ | | |
| MTA Review/Approve of Bonds & Insurance | 12/29/03* | | | | | ◆ | |
| Notice To Proceed - C0800, C0801 and C0803 | 12/29/03* | | | | | ◆ | |
| Contractor Commence Procurement of Tunnel Boring Machines | 12/29/03* | | | | | ◆ | |



MTA Staff Milestone



Other Agencies



Eastside LRT Partners Deliverables

*

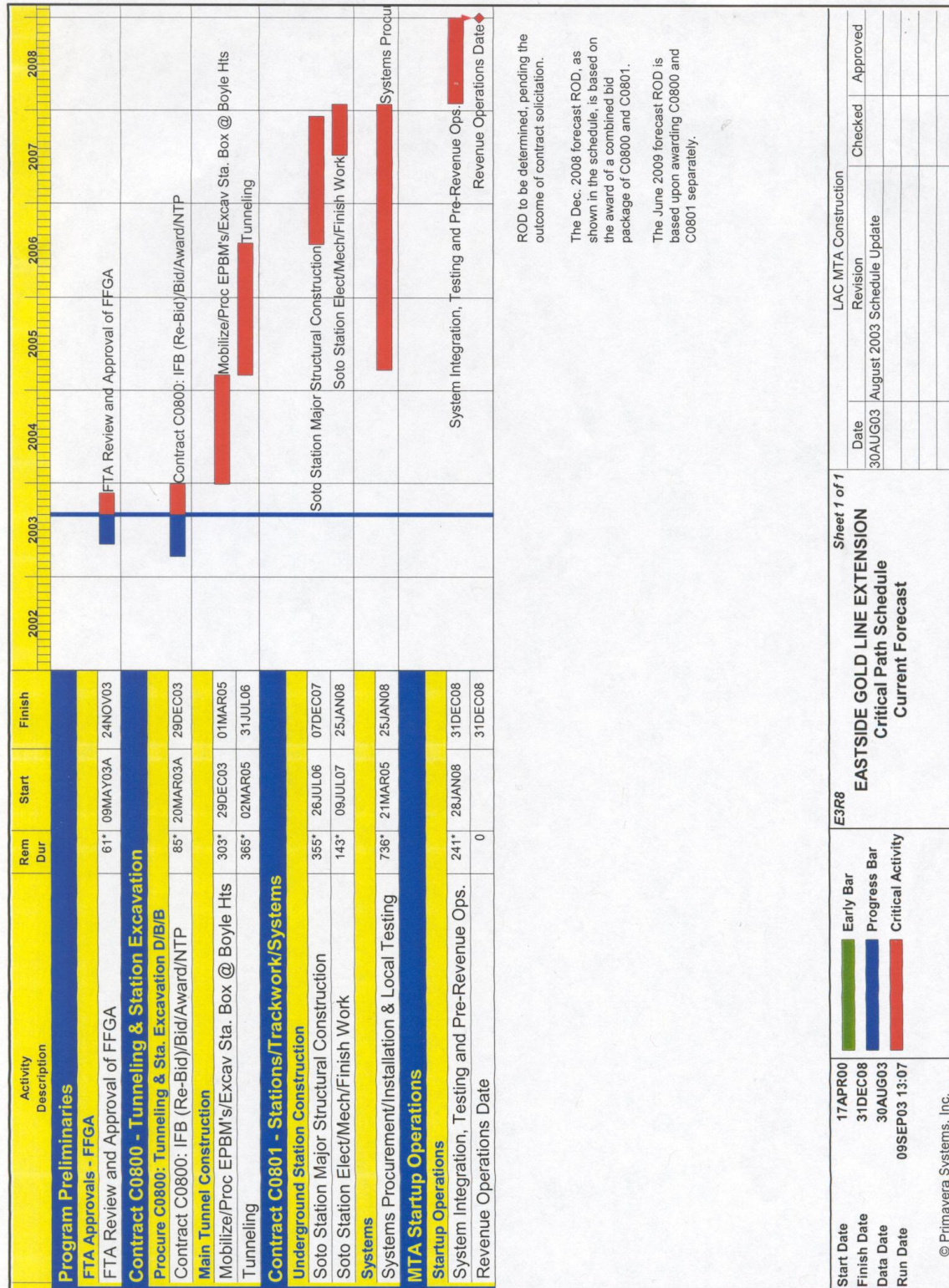
New Date



FTA FTA Approval

MTA Board Approval

PROJECT MASTER SCHEDULE CRITICAL PATH



CRITICAL PATH NARRATIVE

The technical/qualification submittals (TQS) were received on August 20, 2003 and are under evaluation. After notification of technically qualified bidders, the price bids for all three contracting opportunities are due in early November 2003. The Contract Award(s) and the Notice To Proceed(s) are scheduled for late November 2003 and late December 2003, respectively. The contract award(s) is contingent upon FTA approval of the FFGA.

Upon the issuance of Notice To Proceed(s), there will be a 13-month lead time for the procurement of two Earth Pressure Balance Machines (EPBMs). Concurrent with the EPBM procurement, the project will proceed with mobilization, pile installation, and station box excavations. The station box excavations are scheduled to complete prior to the EPBMs delivery.

The critical path continues with EPBMs assemblies, excavation of both tunnels, excavation of crosspassages, and tunnel invert and walkway construction. The critical path then follows Soto underground station construction. The systems equipment installation and local facilities testing is the last stage of the critical path prior to entering the final test stage where systems integration testing and pre-revenue operations are conducted.

Based on the award of a combined bid package of C0800 and C0801, ROD is forecasted to occur in December 2008. Based upon the award of separate packages, ROD is forecasted to occur in June 2009. The schedule provided in this report is based on the scenario that a single contract of the combined work in C0800 and C0801 will be awarded.

The advanced utility relocations are currently underway by Adelphia Cable, the Gas Company, Los Angeles Department of Water and Power (DWP) and SBC and are scheduled to complete prior to the commencement of C0803 work.

PROJECT COST STATUS

In \$ Million

| Description | Previous Estimated Project Cost | Current Estimated Project Cost | Variance | Commitments | Expenditures |
|-----------------------|---------------------------------------|--------------------------------------|------------|--------------|--------------|
| Guideways | 287.0 | 287.0 | 0.0 | 0.0 | 0.0 |
| Yards & Shops | 35.6 | 35.6 | 0.0 | 0.0 | 0.0 |
| Systems/Equipment | 76.1 | 76.1 | 0.0 | 0.0 | 0.0 |
| Stations | 109.4 | 109.4 | 0.0 | 0.0 | 0.0 |
| Vehicles | 31.7 | 31.7 | 0.0 | 31.7 | 2.1 |
| Special Conditions | 55.0 | 55.0 | 0.0 | 12.0 | 1.5 |
| Right-of-Way | 53.0 | 53.0 | 0.0 | 51.0 | 15.4 |
| Professional Services | 145.3 | 145.3 | 0.0 | 56.4 | 46.5 |
| Contingency | 87.4 | 87.4 | 0.0 | 0.0 | 0.0 |
| TOTAL | 880.4 | 880.4 | 0.0 | 151.2 | 65.4 |

The expenditures decreased this period by \$1.4 million due to MTA Accounting Department's fiscal year-end accruals adjustments.

CHANGE CONTROL STATUS

| | A | B | | C | | D=A+B+C | E | | F=D+E |
|---------------------------------------|-------------|--------------|------------------|---|-------------|------------|-----------------------|---------|------------|
| | Approved | | | | | Obligated | Potential | | |
| | Description | Award Amount | Executed Changes | | LNTPs (NTE) | | Total Approved Amount | Pending | |
| # | | | \$ | # | \$ | # | | \$ | |
| Engineering Design Services | 18,929,502 | 11 | 12,073,328 | 0 | 0 | 31,002,830 | 0 | 0 | 31,002,830 |
| Environmental Services | 648,564 | 1 | 183,517 | 6 | 89,500 | 921,581 | 2 | 798,988 | 1,720,569 |
| Design/Build Advisory Panel Services | 1,059,840 | 0 | 0 | 0 | 0 | 1,059,840 | 0 | 0 | 1,059,840 |
| Project Management Assistance Support | 166,366 | 7 | 3,256,556 | 0 | 0 | 3,422,922 | 0 | 0 | 3,422,922 |
| | | | | | | | | | |
| TOTAL | 20,804,272 | 19 | 15,513,401 | 6 | 89,500 | 36,407,173 | 2 | 798,988 | 37,206,161 |

FINANCIAL/GRANT STATUS

AUGUST 2003

STATUS OF FUNDS BY SOURCE

in \$ millions

| SOURCE | (B) TOTAL FUNDS ANTICIPATED | (C) TOTAL FUNDS AVAILABLE | (D) COMMITMENTS \$ | (D/B) % | (E) EXPENDITURES \$ | (E/B) % | (F) BILLED to FUNDING SOURCE \$ | (F/B) % |
|-----------------------------------|--------------------------------------|------------------------------------|--------------------------|------------|---------------------------|------------|--|------------|
| | | | | | | | | |
| FEDERAL - SECTION 5309 NEW START | 490.7 | 17.3 | 77.3 | 16% | 12.0 | 2% | 12.0 | 2% |
| FED - SECTION 5309 FIXED GUIDEWAY | 23.1 | | | 0% | | 0% | | 0% |
| FEDERAL - CMAQ | 10.3 | | | 0% | | 0% | | 0% |
| REGIONAL IMPROVMNT PROG-FED | 179.6 | 4.6 | 28.3 | 16% | 4.6 | 3% | 4.6 | 3% |
| REGIONAL IMPROVM PROG-STATE | 0.6 | 0.6 | 0.6 | 100% | 0.6 | 100% | 0.6 | 100% |
| STATE TCRP | 45.0 | 45.0 | 45.0 | 100% | 40.4 | 90% | 40.4 | 90% |
| PROP A 35% / PROP C 40% BONDS | 121.0 | | | 0% | | 0% | | 0% |
| LEASE REVENUES | 10.1 | | | 0% | | 0% | | 0% |
| UNBILLED ACCRUALS | | 7.7 | | | 7.7 | | | |
| SUB-TOTAL | 880.4 | 75.2 | 151.1 | 17% | 65.4 | 7% | 57.6 | 7% |
| PROP A/PROP C (INTEREST COST) | 18.4 | 0.0 | 0.0 | 0% | 0.0 | 0% | 0.0 | 0% |
| TOTAL | 898.8 | 75.2 | 151.1 | 17% | 65.4 | 7% | 57.6 | 6% |

(1) Based on August 03 Adopted Short Range Transportation Plan (includes interest cost)
 NOTE: EXPENDITURES ARE CUMULATIVE THROUGH JULY 2003.

STATUS OF FUNDS ANTICIPATED

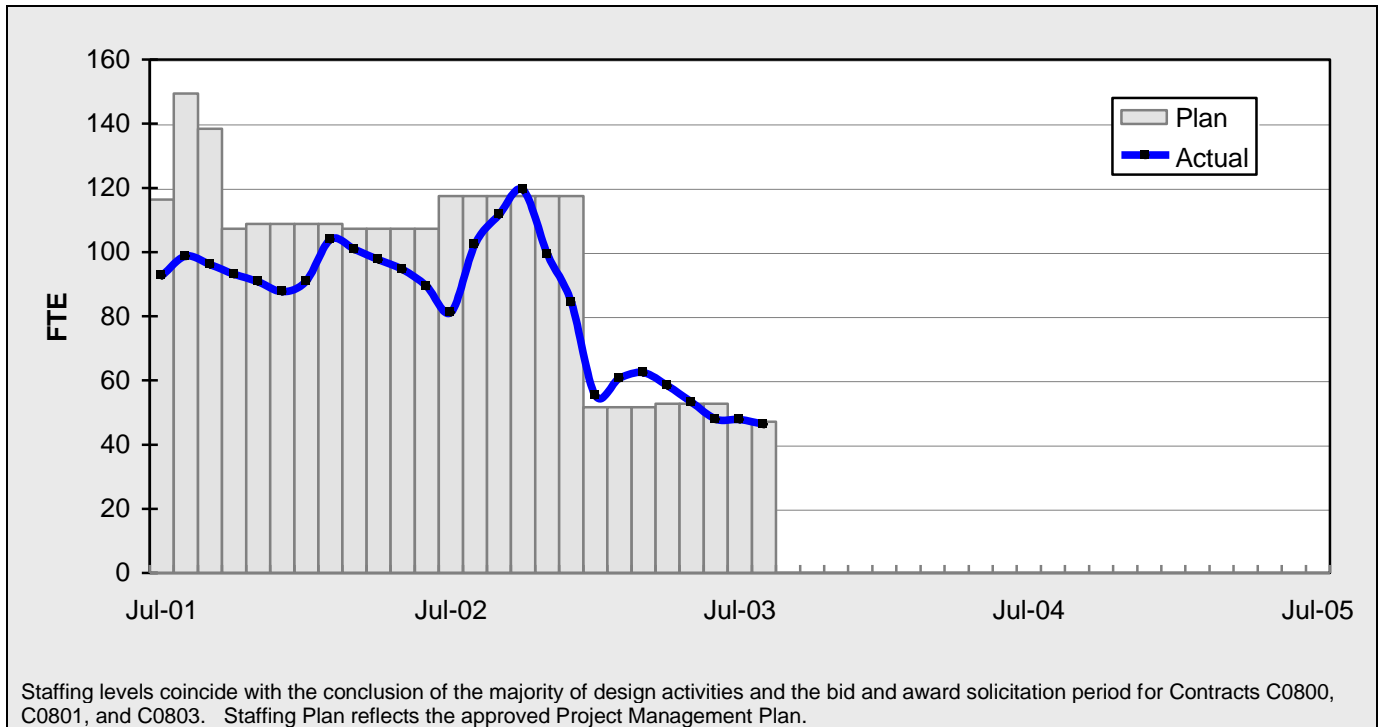
FEDERAL SECTION 5309: MTA submitted a grant amendment application CA-03-0508-04 for \$3,934,330 on April 18, 2003. Funds are available for draw down as of June 2003.

STATE TCRP: On April 3, 2003 the California Transportation Commission approved MTA's request to amend the STIP to convert \$191 million of unallocated TCRP funds to STIP funds.

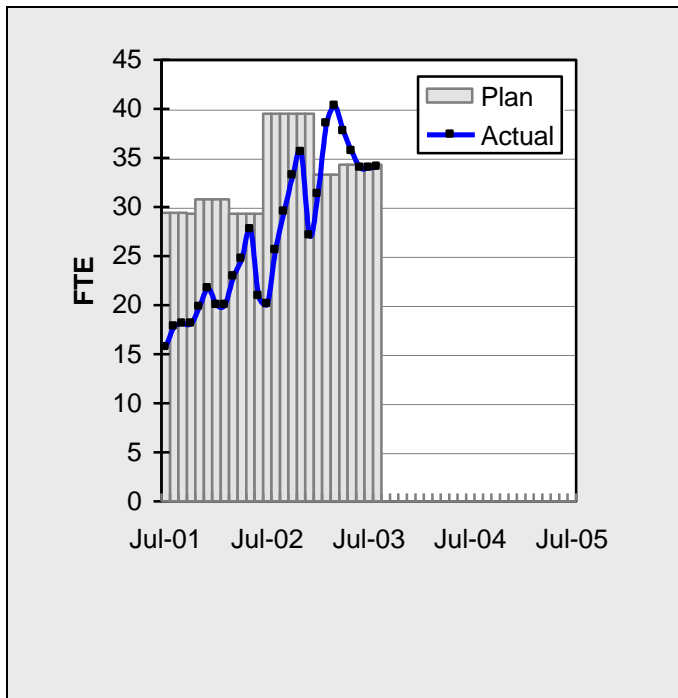
On August 25, 2003, MTA submitted a request for AB1335 Letter of No Prejudice (LONP) authority for Phase 4 construction activities. The LONP is scheduled for approval at the September 2003 CTC Meeting.

STAFFING STATUS

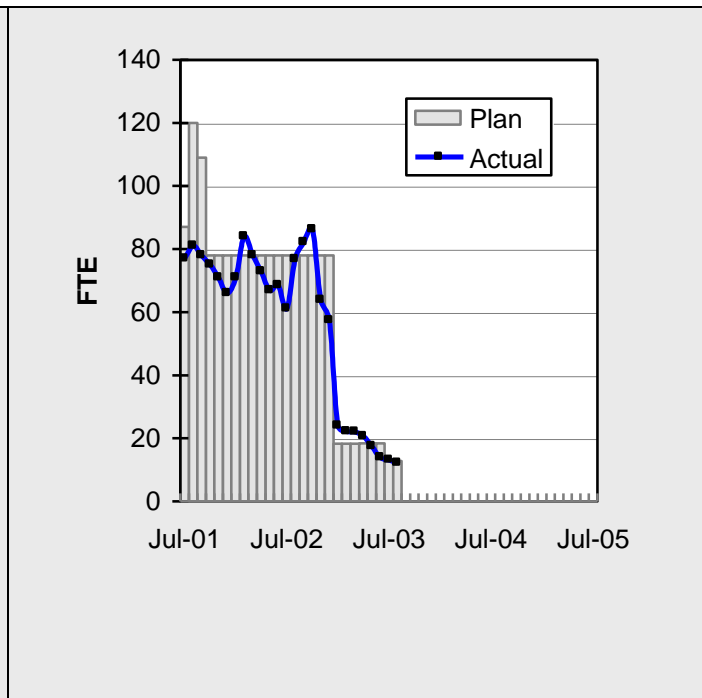
TOTAL PROJECT STAFFING



AGENCY STAFFING



ELRT PARTNERS



REAL ESTATE STATUS

- For C0800, the tunnel portion of the alignment, 45 parcels are required for acquisition (10 full takes, 18 sub-surface easements, 8 part takes, 5 sub-surface easements/building protection, 2 building protections, 1 street vacation and 1 permit from Caltrans which will be coordinated through MTA's Third Party Coordination).
- For C0801, the at-grade portion of the alignment, 33 parcels are required for acquisition (19 full takes, 9 partial takes, 3 street vacations, and 2 permits required from Caltrans which will be coordinated through the MTA's Third Party Coordination office). Nine parcels have been identified for the proposed Ramona High School site reconfiguration.
- For C0802, 3 parcels are required (2 surface easements and 1 full take parcel).
- Sixty-one parcels have been certified, 39 for C0800, 20 for C0801 and 2 for C0802. Offers have been made to 28 property owners. A total of 13 parcels have been acquired (8 under C0800 and 5 under C0801). Three parcels are in condemnation and Real Estate is in negotiations with the other property owners.

REAL ESTATE ACQUISITION SCHEDULE SUMMARY

| <i>Number of Parcels</i> | Required | Acquired | On Schedule | Behind Schedule | |
|------------------------------|----------|----------|----------------|-----------------|-----------------------|
| | | | | Number | Avg. Calendar Days |
| This Period | 81 | 13 | 68 | 0 | 0 |
| Last Period | 81 | 13 | 68 | 0 | 0 |

REAL ESTATE STATUS TO DATE BY CONTRACT

Actual Parcels

| Contract | No. of Parcels | Certified | Just Comp Approved | Offers Made | Agreements Signed | Condemnation | Parcels Available | Parcels projected to be unavailable by need date |
|----------------------|-------------------|-----------|-----------------------|-------------|----------------------|--------------|----------------------|---|
| C0800 | 45 | 39 | 15 | 15 | 8 | 3 | 8 | 0 |
| C0801 | 33 | 20 | 6 | 11 | 6 | 0 | 5 | 0 |
| C0802 | 3 | 2 | 2 | 2 | 0 | 0 | 0 | 0 |
| TOTAL | 81 | 61 | 23 | 28 | 14 | 3 | 13 | 0 |
| Last Period Total | 81 | 61 | 22 | 23 | 13 | 3 | 13 | 0 |

ENVIRONMENTAL STATUS

- Negotiated “urgent and emergency services” contract with environmental contractors.
- Coordinated demolition of Mobil gas station.

COMMUNITY RELATIONS STATUS

- Coordinated public outreach events with community representatives to facilitate public interest in the Metro Gold Line Eastside Extension Project.
- Conducted meetings with business owners to discuss pre-construction activities impact mitigation.
- Continued education campaign on advanced utility relocation and circulated construction notices on active relocations.
- Continued coordination of pre-construction survey activities with Pinnacle One.

QUALITY ASSURANCE STATUS

- Quality Management accepted the Eastside Partner's corrective action response to QAR S2003-405-01, excessive errors when converting CADD files to deliverable CDs. The QAR is closed.
- Request for corrective action due date extension was granted by Quality Management for QAR S2003-414-01, submittal of full size drawing vellums and calculation, C0800, C0801, and C0803. Revised corrective action due date is September 5, 2003.

SAFETY STATUS

- Responded to bidders questions during the technical evaluation process.

THIRD PARTY AGREEMENT STATUS

| Third Party | Type of Agreement | Construction Need Date | Forecast Execution Date | Status/ Comments |
|----------------------------------|-------------------|------------------------|-------------------------|--|
| City of Los Angeles | Amendment | 4/16/03 | Completed | Fully executed on 12/23/02. |
| Los Angeles County | Master | 7/03 | Completed | Execution completed 4/1/03. |
| Caltrans (All Projects) | Master | 11/03 | Completed | MTA execution completed 5/7/03. Full execution by Caltrans occurred in July. |
| Caltrans (101) | Design | 11/03 | Completed | MTA execution completed by 5/7/03. Full execution by Caltrans occurred in July. |
| Caltrans (101) | Construction | 11/03 | 9/03 | MTA execution completed 6/16/03. Full execution by Caltrans is being circulated through for signatures. |
| Caltrans (101) | Maintenance | 6/07 | 1/04 | Initial negotiation meeting on 1/9/03 resulted in MTA's recommendation to use the existing agreement with a similar San Diego system. The San Diego agreement was forwarded to MTA on 1/29/03. MTA received a draft from Caltrans on 4/10/03. MTA returned the agreement to Caltrans on 4/22/03 with comments. After a negotiation meeting held on 7/29/03, a draft agreement from Caltrans was anticipated to be forwarded to MTA in August. To date, it has not been received. |
| LADWP (Water) | Amendment | 11/03 | 11/03 | Draft amendment submitted. Awaiting LADWP concurrence to use existing MCA until an amendment is executed. Discussions are ongoing. |
| LADWP (Power) | Amendment | 11/03 | 11/03 | LADWP signed off 3/13/03 to work under the previous MCA until an amendment is executed. |
| So. Cal. Edison Co. | Amendment | 11/03 | 11/03 | Draft amendment was sent to SCE on 10/24/02. |
| The Gas Company | Amendment | 11/03 | 11/03 | The Gas Co. has been and will continue to work under previous agreement until an amendment is executed. |
| Pacific Bell | Amendment | 11/03 | 11/03 | Another draft agreement was sent to Pac Bell on 2/4/03. PacBell responded on 4/17/03 with additional markup, which is being reviewed by MTA Legal. |
| Adelphia Cable Company | Amendment | 11/03 | 11/03 | Awaiting Adelphia's concurrence to use existing MCA until an amendment is executed. |
| California Water Service Company | Master | 11/03 | 11/03 | A revised draft was submitted 4/23/03 to Legal for review. Following legal review, the amendment is being re-drafted to be sent to California Water. |

THIRD PARTY AGREEMENT STATUS (Continued)

| Third Party | Type of Agreement | Construction Need Date | Forecast Execution Date | Status/ Comments |
|---------------------------------|--------------------------|-------------------------------|--------------------------------|--|
| L.A.County Sanitation Districts | N/A | 11/03 | Completed | Sanitation District letter dated 3/26/03 stated no need for an agreement since there are no relocations necessarily related to their facilities. They will review the submittals related to encasement for their facility on Indiana Street. |
| MCI Worldcom | Amendment | 11/03 | 11/03 | A revised draft amendment using the new format was sent to MTA Legal on 4/23/03 for review. Following legal review, the amendment is being re-drafted to be sent to MCI. |
| Metropolitan Water District | Amendment | 11/03 | Completed | 1/7/03 meeting resulted in using the existing agreement. A letter was sent to MWD on 4/1/03 for their concurrence. Concurrence was executed by MWD on 4/21/03 and received on 5/12/03. |
| Verizon Wireless | Amendment | 11/03 | 12/03 | An amendment was drafted and sent to MTA Legal on 4/23/03 for review. |
| AT & T Local Services | Amendment | 11/03 | 12/03 | An amendment was drafted and sent to MTA Legal on 4/7/03 for review. |
| GST | N/A | | | Facilities are not impacted by Eastside Construction |
| Exxon Mobil Oil Company | N/A | | | Facilities are not impacted by Eastside Construction |
| Pacific Pipeline Company | N/A | | | Facilities are not impacted by Eastside Construction |
| Kinder Morgan Pipeline Company | N/A | | | Facilities are not impacted by Eastside Construction |
| Tosco Refining Company | N/A | | | Facilities are not impacted by Eastside Construction |
| Equilon Pipeline Company | N/A | | | Facilities are not impacted by Eastside Construction |
| Level 3 Communications | N/A | | | Facilities are not impacted by Eastside Construction |
| Broadwing Communications | N/A | | | Facilities are not impacted by Eastside Construction |
| Eller Media | N/A | | | Facilities are not impacted by Eastside Construction |
| Qwest-SP Telecom | N/A | | | Facilities are not impacted by Eastside Construction |

CPUC CROSSING SUMMARY

| <i>Batch</i> | <i>Status</i> | <i>Initial Package Submittal to MTA</i> | <i>Field Diagnostic Meeting</i> | <i>Revised Drawings Due to MTA</i> | <i>Draft Write-up to MTA</i> | <i>Draft Package Sumbittal to PUC Local office and Agencies</i> | <i>Final Package Submittal to PUC</i> |
|--------------------|---------------|---|---------------------------------|------------------------------------|------------------------------|---|---------------------------------------|
| 1 | Complete | 8/5/02 | 8/12/02 | 8/26/02 | 9/6/02 | 9/6/02 | 9/6/02 |
| 2 | Complete | 10/4/02 | 10/11/02 | 10/25/02 | 11/6/02 | 11/22/02 | 11/22/02 |
| 3 | Complete | 2/6/03 | 2/27/03 | 3/10/03 | 1/27/03 | 4/11/02 | 4/18/03 |
| 4 | Completed | 12/14/02 | 1/15/03 | 1/29/03 | 11/13/02 | 5/5/03 | 6/18/03 |
| 4A | In Progress | 1/24/03 | 1/29/03 | 3/14/03 | 2/7/03 | 9/5/03 | 9/12/03 |
| 5 | On-Hold | 3/19/03 | on-hold | on-hold | 2/28/03 | on-hold | on-hold |
| 6 | In Progress | 3/19/03 | 3/26/03 | 6/20/03 | 2/7/03 | 9/5/03 | 9/12/03 |
| 7 | Complete | 12/11/02 | 12/18/02 | 3/31/03 | 2/7/03 | 5/5/03 | 7/25/03 |
| 8 | In Progress | 11/26/02 | 12/18/02 | 3/31/03 | 11/15/02 | 6/6/03 | 9/5/03 |
| 9 | In Progress | 1/20/03 | 1/29/03 | 3/31/03 | 11/22/02 | 8/29/03 | 9/12/03 |
| 10 | Complete | 12/11/03 | 12/18/02 | 3/10/03 | 11/22/02 | 5/5/03 | 8/29/03 |
| 11 | Complete | 2/13/03 | 2/27/03 | 4/18/03 | 12/6/02 | 6/6/03 | 8/29/03 |
| 12 | In Progress | 2/13/03 | 2/27/03 | 4/18/03 | 12/13/02 | 6/6/03 | 9/5/03 |
| 13 | In Progress | 2/6/03 | 2/20/03 | 4/18/03 | 2/21/03 | 6/6/03 | 9/5/03 |
| 14 | In Progress | 1/8/03 | 1/15/03 | 3/14/03 | 11/12/02 | 8/29/03 | 9/12/03 |
| 15 | Complete | 2/26/03 | N/A | N/A | 2/21/03 | 6/6/03 | 8/29/03 |
| 16 | Complete | 2/26/03 | N/A | N/A | 2/28/03 | 6/6/03 | 8/29/03 |
| 17 | Complete | 1/8/03 | 1/15/03 | N/A | 2/14/03 | 5/5/03 | 6/13/03 |
| 18 | Complete | 1/8/03 | 1/15/03 | 3/20/03 | 2/14/03 | 5/5/03 | 6/13/03 |
| Agency Responsible | | ELRTP | MTA | ELRP | ELRTP | MTA | MTA |

This schedule has been revised. A number of applications, although technically finalized, have not yet been submitted due to backlogging. A meeting was held with PUC staff on how to proceed with the backlog. MTA and PUC staff agreed to have MTA submit all applications within three weeks of this update to allow for initiation and completion of the 30 day public review period.

| Batch Descriptions and Order of Submission to PUC | | | |
|---|---------------------------------------|----|--|
| 1 | 1st / Alameda | 15 | 1st / Santa Fe |
| 2 | Alameda / Temple | 16 | 1st / Myers |
| | 1st / Hewitt | | 1st / MTA |
| | Ped Crossings @ 1st / Alameda Station | | 1st / BNSF |
| 4 | 1st / Lorena | | 1st / Union Pacific |
| 3 | 1st / Vignes | 11 | 3rd / Mednik |
| 10 | 3rd / Ford | | 3rd / Civic Center Drive |
| | 3rd / McDonnell | | 3rd / La Verne |
| | 3rd / Arizona | 12 | 3rd / Drveways to Sherriff's Station |
| 4A | 1st / Indiana | | 3rd / Wood / Via Corona / Pomona / Beverly |
| | 3rd / Indiana | | Pomona/Atlantic |
| | Indiana / Gleason Pedestrian Crossing | 13 | 3rd / 60 Fwy WB Connector |
| 14 | Union Station Service Road | | 3rd / 60 Fwy over ELRT |
| 7 | 3rd / Ditman | | 3rd / 710 Fwy SW Connector |
| | 3rd / Rowan | | 3rd / Bridge over 710 Fwy |
| 8 | 3rd / Gage | | 3rd / 710 Fwy SE Connector |
| | 3rd / 60 Fwy WB Ramps | 5 | Ducommun / Hewitt |
| | 3rd /Downey | | Ducommun / Garey |
| 9 | 3rd / Marianna | | Ducommun / Vignes |
| | 3rd / Eastern | | Ducommun / Center |
| | 3rd / 710 SB On-Ramp | 6 | 1st / Mission |
| 17 | US 101 Fwy Overcrossing | | 1st / Anderson |
| 18 | Commercial Street Overcrossing | | 1st / Clarence |
| | | | 1st / Utah |

FFGA APPLICATION DOCUMENT CHECKLIST

SUPPORTING DOCUMENTS

| DOCUMENT | AGENCY | TARGET DATE | STATUS/COMMENTS |
|--|---------|-------------|--|
| Value Engineering | MTA | 8/01 | Report completed. |
| Record of Decision/FONSI | FTA | 6/02 | Complete. |
| Quality Management Plan | MTA | 8/02 | FTA approved for current stage. |
| FSTIP Approval | SCAG | 10/4/02 | Complete. Included in 10/4/02 FSTIP. |
| Annual Certifications/ Assurances | MTA | 12/18/02 | Complete. |
| Financing Plan | MTA | 2/7/03 | Submitted to FTA for review. |
| Real Estate Acquisition Plan | MTA | 4/03 | Submit detailed plan for review. |
| Submit System Safety Program Plan to CPUC | MTA | 6/17/03 | Revised plan was submitted to the CPUC and finalized. |
| Submittal of paper grant application (5309) and TEAM application (Part II – FFGA included) | MTA | 6/03 | FFGA amendment 5 has been entered in TEAM and is pending FTA approval. |
| Department of Labor (13c) Certification | DOL | 7/03 | Complete. |
| Civil Rights Program Review | FTA | 7/03 | Entered grant in TEAM. Waiting for approval. |
| Before and After Study Plan | MTA | 9/03 | MTA working with FTA on final version. |
| Rail Fleet Management Plan | MTA | 9/03 | MTA to submit final plan for FTA review. |
| Bus Fleet Management Plan | MTA | 9/03 | MTA to submit final plan for FTA review. |
| Project Management Plan | MTA | 9/03 | PMO recommended approval. Waiting for FTA final approval. |
| Risk Assessment | MTA | 9/03 | Currently underway. |
| Financial Capacity Review | FMO | 9/03 | MTA submitted comments to draft report. Waiting for final report. |
| Spot Report (as needed) | FMO/PMO | 9/03 | Waiting for FTA approval. |
| Region IX to HQ FFGA Recommendation Memo | FTA | 9/03 | |
| FTA letter to Congress | FTA | 10/03 | |

FFGA APPLICATION DOCUMENTS

| DOCUMENT | AGENCY | TARGET DATE | STATUS/COMMENTS |
|---|----------|--------------|---|
| Part I – Full Funding Grant Agreement | FTA | 8/1/03 | Received comments from FTA HQ. |
| Attachment 1 – Scope of Project | MTA | 8/1/03 | Received comments from FTA HQ. |
| Attachment 1A – Project Map | MTA | 8/1/03 | Received comments from FTA HQ. |
| Attachment 2 – Project Description | MTA | 8/1/03 | Received comments from FTA HQ. |
| Attachment 3 – Baseline Cost Estimate | MTA | 8/1/03 | Received comments from FTA HQ. |
| Attachment 3A – Project Budget | MTA | 8/1/03 | Received comments from FTA HQ. |
| Attachment 4 – Baseline Schedule | MTA | 8/1/03 | Received comments from FTA HQ. |
| Attachment 5 – Schedule of Prior Grants and Related Documents | MTA | 8/1/03 | Received comments from FTA HQ. |
| Attachment 6 – Schedule of Capital New Starts Funds | MTA | 8/1/03 | Received comments from FTA HQ. |
| Attachment 7 – Measures to Mitigate Environmental Impacts | MTA | 8/1/03 | Received comments from FTA HQ. |
| Attachment 8 – Before and After Study | MTA | 8/1/03 | Received comments from FTA HQ. |
| Congressional Review | Congress | 10/03 -11/03 | |
| Interagency Agreements including CPUC Oversight (MOU) | MTA | | Revisions to existing agreements in progress. |
| Environmental Permits & Biological Determination | TBD | TBD | TBD if needed |
| FTA Approval Letter to Grantee | FTA | 11/03 | |
| Review/Execution of FFGA | FTA/MTA | 11/03 | |

CONTRACT P2550 STATUS

| | | | | | | |
|---|--|-------------------------|----------------|------------------|----------|--------------|
| Description: 2550 Rail Vehicle Program | Contract No.: P2550 | | | | | |
| Contractor: AnsaldoBreda, Italy | MTA Project: 800151 | | | | | |
| | Status as of: August 31, 2003 | | | | | |
| Progress/Work Completed: <div>• MTA has met with Contractor Engineering and Production personnel during June '03 in the Italian Facility to review the contract milestones and LRV Cars production schedules.</div> <div>MTA has started Consultant Services Design/Engineering reviews during mid-July 2003. MTA also started Car Manufacturer Design/Engineering reviews at the L.A. MTA location from July 21st. through the 25th. Car Manufacturer has continue the development of engineering, production and drawing submittal schedules for the full term of the project, including vehicle delivery schedule.</div> | Major Activities (In Progress): <div>• Contractor has continued the development of Milestone 1A and Milestone 2A work.</div> | | | | | |
| Areas of Concern: <div>• Finalization of all prime and sub-vendors that will impact the production line and delivery schedule of the 2550 Rail Vehicle Program.</div> | Major Activities Next Period: <div>• Complete Milestone 1A (see Table A of Contract Milestone Payments) for the approval of engineering, production and drawing submittal schedules, and approval of the first schedule for the full term of the project, including vehicle delivery schedule.</div> <div>Continue the development of Milestone 2a (see Table A of Contract Milestone Payments) for the approval of Contractor's Preliminary 13-Week Schedule, and delivery of copies of subcontracts for:</div> <div>• Systems Engineering</div> <div>• Carshell and Articulation</div> <div>• Propulsion</div> <div>• Braking</div> <div>• Truck Frame</div> <div>• Door Controls</div> <div>• Air Conditioning</div> <div>• Train Control</div> <div>• User Education, including all manuals</div> | | | | | |
| Schedule Summary: | | Original Contract Dates | Time Extension | Current Contract | Forecast | Variance CDs |
| Date of Award: 04/24/03 | Notice to Proceed | 06/06/03 | 0 | 6/06/03A | 6/06/03A | 0 |
| Notice to Proceed: 06/06/03 | Milestone 1A - Approval of Engineering Production Plan | 08/08/03 | 0 | 08/08/03 | 09/30/03 | -53 |
| Original Contract Duration: 1460 CD | Milestone 2A - Approval of Contractor's Prelim. 13 weeks schedule | 09/05/03 | 0 | 09/05/03 | 10/28/03 | -53 |
| Current Contract Duration: 1460 CD | Milestone 14A - Acceptance of two First Article Vehicles | 12/02/05 | 0 | 12/02/05 | 12/02/05 | 0 |
| Elapsed Time from NTP: 24 CD | | | | | | |
| Option 1 & 2 Contract duration 1460 CD** | | | | | | |
| ** after starting options 1 & 2 | | | | | | |
| Physical Percent Complete: | Cost Summary: \$ In millions | | | | | |
| (to be available and reported during September 2003) | 1. Award Value: 158.74 | | | | | |
| | (Metro Gold Line Eastside Ext Only: 31.75) | | | | | |
| | 2. Executed Modifications: 0.00 | | | | | |
| | 3. Approved Change Orders: 0.00 | | | | | |
| | 4. Current Contract Value (1 + 2 + 3): 158.74 | | | | | |
| | 5. Pending Changes: 0.00 | | | | | |
| | 6. Incurred Cost: 0.00 | | | | | |

CURRENT PROJECT RENDERINGS



Computerized Rendering of Proposed
Metro Gold Line Eastside Extension
Guideway Bridge at the 101 Freeway



Little Tokyo/Arts District Station

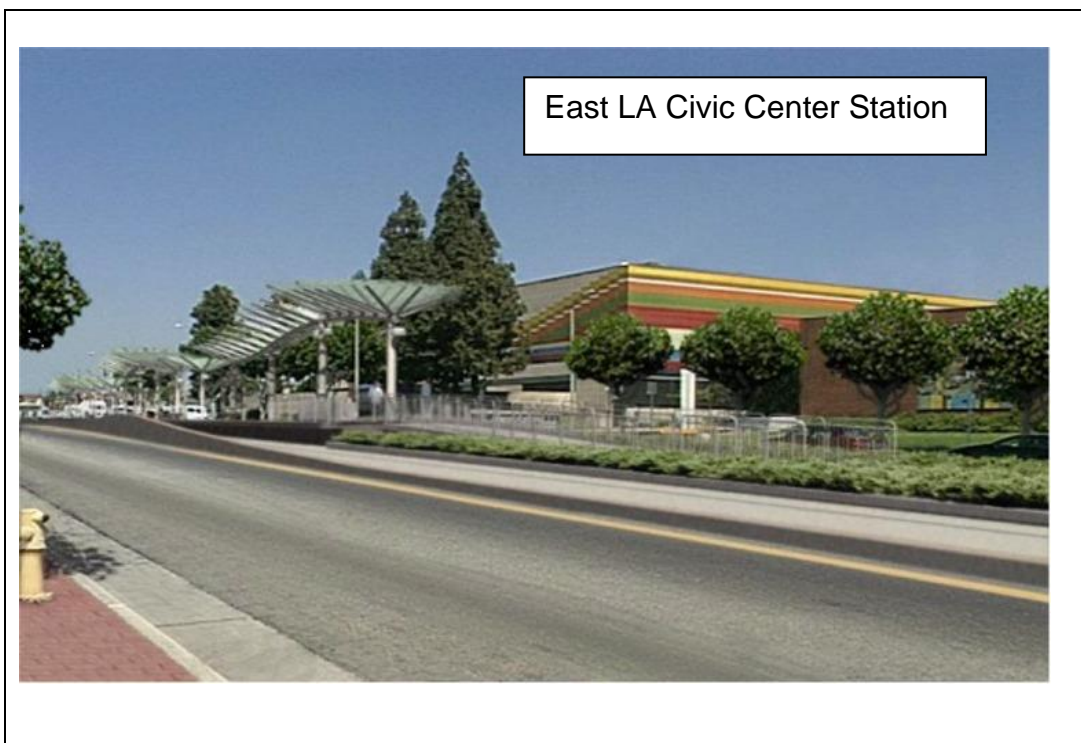
CURRENT PROJECT RENDERINGS



CURRENT PROJECT RENDERINGS



CURRENT PROJECT RENDERINGS



APPENDIX

COST AND BUDGET TERMINOLOGY

ESTIMATED PROJECT COSTS: Estimated project costs are based upon the current project cost estimates that are produced during the engineering design phase.

COMMITMENTS: The total of actual contract awards, executed change orders or amendments, approved work orders of Master Cooperative Agreements, offers accepted for purchase of real estate, and other LACMTA actions that will result in specific expenditures at a future time.

INCURRED COST: The total value of work performed to date of services received, and acquired materials or properties.

EXPENDITURES: The total dollar amount of checks written by LACMTA's Accounting department for contractor or consultant invoices, third party invoices, staff salaries, and closing payments for escrow accounts that is reported in LACMTA's Financial Information System (FIS).

CONSTRUCTION: Includes guideways, yards and shops, systems equipment, stations, and vehicles.

PROFESSIONAL SERVICES: Includes general engineering, construction management services, consultant design support services during construction, legal counsel, and agency (MTA staff) costs.

RIGHT-OF-WAY: Includes real estate appraisals, purchase cost of parcels, easements, right-of-entry permits, escrow fees, and tenant relocation.

UTILITY/AGENCY FORCE ACCOUNT: Includes work by outside agencies and utilities in design coordination and review.

CONTINGENCY: A fund established at the beginning of a project to provide for anticipated but unknown additional costs that may arise during the course of the project.

SPECIAL CONDITIONS: Includes utilities relocation, environmental compliance and mitigation, master cooperative agreements, insurance program, artwork, systems integration testing and pre-revenue operations.

APPENDIX LIST OF ACRONYMS

| | |
|----------|--|
| AFE | Authorization For Expenditure |
| ATC | Automatic Train Control |
| CADD | Computer Aided Drafting and Design |
| CALTRANS | California Department of Transportation |
| CD | Calendar Day |
| CM | Construction Manager |
| CMAC | Congestion Mitigation Air Quality |
| CN | Change Notice |
| CO | Change Order |
| CPM | Critical Path Method |
| CPUC | California Public Utilities Commission |
| CR | Camera Ready |
| CTC | California Transportation Commission |
| CUD | Contract Unit Description |
| DB | Design/Build |
| DBB | Design/Bid/Build |
| DD | Design Development |
| DOT | Department of Transportation |
| DWP | Department of Water and Power |
| EIR | Environmental Impact Report |
| EIS | Environmental Impact Statement |
| EPBM | Earth Pressure Balance Machine |
| ESP | Eastside LRT Partners |
| FAR | Federal Acquisition Regulation |
| FD | Final Design |
| FEIS | Final Environmental Impact Statement |
| FEIR | Final Environmental Impact Report |
| FFGA | Full Funding Grant Agreement |
| FIS | Financial Information System |
| FSEIR | Final Supplemental Environmental Impact Report |
| FSEIS | Final Supplemental Environmental Impact Statement |
| FTA | Federal Transit Administration |
| FTE | Full Time Equivalent |
| GDSR | Geotechnical Design Summary Report |
| IFB | Invitation for Bid |
| IPO | Integrated Project Office |
| JV | Joint Venture |
| LA | Los Angeles |
| LABOE | Los Angeles Bureau of Engineering |
| LACFCD | Los Angeles County Flood Control District |
| LACMTA | Los Angeles County Metropolitan Transportation Authority |
| LADOT | Los Angeles Department of Transportation |

**APPENDIX
LIST OF ACRONYMS (Continued)**

| | |
|-------|--|
| LADPW | Los Angeles Department of Public Works |
| LADWP | Los Angeles Department of Water and Power |
| LAUSD | Los Angeles Unified School District |
| LNTP | Limited Notice To Proceed |
| LONP | Letter Of No Prejudice |
| LRT | Light Rail Transit |
| LRTP | Long Range Transportation Plan |
| LRV | Light Rail Vehicle |
| MIS | Major Investment Study |
| MPSR | Monthly Project Status Report |
| MTA | Metropolitan Transportation Authority |
| N/A | Not Applicable |
| NEPA | National Environmental Protection Act |
| NPDES | National Pollution Discharge Elimination System |
| NTE | Not to Exceed |
| NTP | Notice To Proceed |
| OCIP | Owner-Controlled Insurance Program |
| P3 | Primavera Project Planner® (scheduling software) |
| PC | Project Control |
| PE | Preliminary Engineering |
| PEER | Permit Engineering Evaluation Report |
| PGL | Pasadena Gold Line |
| PIP | Project Implementation Plan |
| PM | Project Manager |
| PMA | Project Management Assistance |
| PMIP | Project Management Implementation Plan |
| PMOC | Project Management Oversight Consultant |
| PMP | Project Management Plan (manual) |
| P&P | Policies & Procedures |
| PR | Project Report |
| PSR | Project Study Report |
| QA | Quality Assurance |
| QAR | Quality Assurance Report |
| QC | Quality Control |
| QPSR | Quarterly Project Status Report |
| RAC | Review Advisory Committee |
| RAG | Rail Activation Group |
| RFC | Request For Change |
| RFP | Request For Proposal |
| ROD | Record Of Decision |
| ROD | Revenue Operations Date |
| ROM | Rough Order of Magnitude |

**APPENDIX
LIST OF ACRONYMS (Continued)**

| | |
|--------|---|
| ROW | Right-Of-Way |
| SCAQMD | Southern California Air Quality Management District |
| SCE | Southern California Edison |
| SCRRA | Southern California Regional Rail Authority |
| SHA | State Highway Account |
| SHPO | State Historic Preservation Office |
| SIT | System Integration Testing |
| SOV | Schedule Of Value |
| SOW | Statement Of Work |
| SP | Special Provision |
| STIP | State Transportation Improvement Program |
| STP | Surface Transportation Program |
| TBD | To Be Determined |
| TBM | Tunnel Boring Machine |
| TCRP | Traffic Congestion Relief Program |
| TPSS | Traction Power Substation |
| TRACS | Transit Automatic Control System |
| UFS | Universal Fare System |
| USDOT | U.S. Department Of Transportation |
| VE | Value Engineering |
| WBS | Work Breakdown Structure |
| WP | Work Package |