

TABLE OF CONTENTS

	Page No.
Project Overview.....	1
Management Issues.....	2
Project Status	
• Project Scope.....	3
• Schedule	
○ Key Milestones Six-Month Lookahead	4
○ Project Master Schedule Critical Path.....	5
○ Critical Path Narrative	6
• Project Cost Status.....	7
• Change Control Status.....	8
• Financial/Grant Status.....	9
• Staffing.....	10
• Real Estate.....	11
• Environmental.....	12
• Community Relations.....	12
• Quality Assurance.....	12
• Safety.....	12
• Third Party.....	13-14
• CPUC Crossing.....	15
FFGA Application and Supporting Documents.....	16-18
Contract P2550 Status	19
Photographs (Project Renderings).....	20-23
Appendices.....	24-27

PROJECT OVERVIEW

The Metro Gold Line Eastside Extension Project is a six-mile, dual track light rail system with eight new stations and one station modification. The system originates at Union Station in downtown Los Angeles, where it connects with the Pasadena Gold Line, traveling generally east to Pomona and Atlantic Boulevards. The system will bridge State Route 101 Freeway and traverse the existing 1st Street Bridge over the Los Angeles River. The system will travel south on Alameda Street and then east on 1st Street with two stations at Alameda and Utah Streets. East of the Los Angeles River and 1st and Utah Streets, the alignment transitions to tunnel for approximately 1.7 miles, and continues beneath 1st Street to underground stations at 1st Street and Boyle Avenue and 1st Street and Soto Street. The alignment returns to the surface near the intersection of 1st Street and Lorena Streets, then jogs to the south, transitioning to follow 3rd Street with stations at Indiana Street, Ford Boulevard, Mednik Avenue and Pomona and Atlantic Boulevards.

Notification of technically acceptable bidders was made public on September 22, 2003. All bidders that had submitted technical proposals on August 20, 2003 were found acceptable. Price bids are due on November 19, 2003 and the bidders will have three days thereafter to provide Disadvantaged Business Enterprise (DBE) goal forms. Bid opening will occur on November 24, 2003.

The critical path for the construction contract(s) begins with the contract award and Notice to Proceed (NTP) date(s) and end with the Revenue Operations Date (ROD). Contract(s) can be awarded only after the Full Funding Grant Agreement (FFGA) has been executed. Execution of the FFGA requires a spot report by the FTA's Project Management Oversight Consultant (PMOC), which was submitted to FTA headquarters on September 26, 2003. After the spot report, it is anticipated that the next steps in the FFGA execution process are 30 calendar days for OST/OMB review, 60 calendar days for Congressional review and 7 calendar days for FTA execution of the FFGA. Based upon the above dates and durations, it is anticipated that an executed FFGA will be received in early January 2004. Therefore, a planned construction NTP would occur in early February and the planned ROD would be forecasted to occur in mid-February 2009, based upon the award of a combined bid package. Based upon the award of separate packages, ROD is forecasted to occur in mid-August 2009.

Advanced utility relocations are underway by Adelphia Cable, the Gas Company, Los Angeles Department of Water and Power (Power) and SBC.

MANAGEMENT ISSUES

There are no Management Issues this reporting period.

PROJECT SCOPE

Contract C0802 – 101 Freeway Bridge

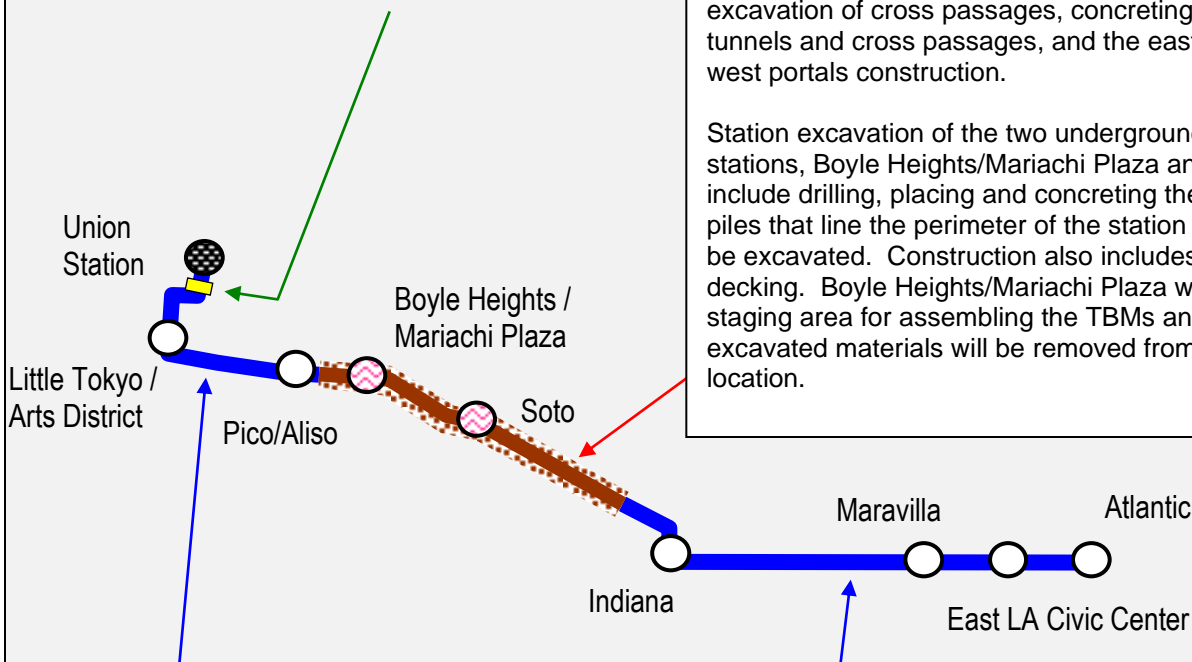
Overcrossing: The construction of the bridge will be combined with Caltrans freeway improvements project. While Caltrans will advertise and administer the construction, MTA will remain responsible for the design and construction costs of the bridge overcrossing.

Contract C0800 - Tunnel and Station

Excavation: This contract will be design/bid/build. The contractor will be selected utilizing a sealed bid, where the award will be based on the lowest priced technically qualified bid.

The start of tunnel construction is based upon the completion of final design, successful construction award and acquisition of full take real estate parcels. Construction of the 1.7 mile tunnel segment includes tunnel excavation using two Earth Pressure Balance Machines (EPBM) type, excavation of cross passages, concreting of the tunnels and cross passages, and the east and west portals construction.

Station excavation of the two underground stations, Boyle Heights/Mariachi Plaza and Soto, include drilling, placing and concreting the soldier piles that line the perimeter of the station box to be excavated. Construction also includes street decking. Boyle Heights/Mariachi Plaza will be the staging area for assembling the TBMs and all excavated materials will be removed from this location.



Contract C0801 - Stations, Trackwork, and Systems: This contract will be design/build. The contractor will be selected utilizing the two-step low bid procurement, following the guidelines set forth in the Federal Acquisition Regulations (FAR) Part 15 and requirements of California Public Utilities Code (CPUC) Section 130242.

The construction of each underground station will occur at the successful completion of the critical tunnel boring work under contract C0800. Construction of the two underground stations includes structural walls, station platforms, mezzanines, station entrances, and plazas, architectural finishes and all related mechanical and electrical work.

All six of the at-grade stations along the six-mile alignment will be constructed under this contract.

This contract includes all the trackwork installation and testing for the entire alignment.

Systems installation and testing is inclusive of power systems, automatic train control, fire and emergency management, TRACS and communications systems. The contractor will be responsible for systems integration testing for the entire line segment prior to pre-revenue operations.

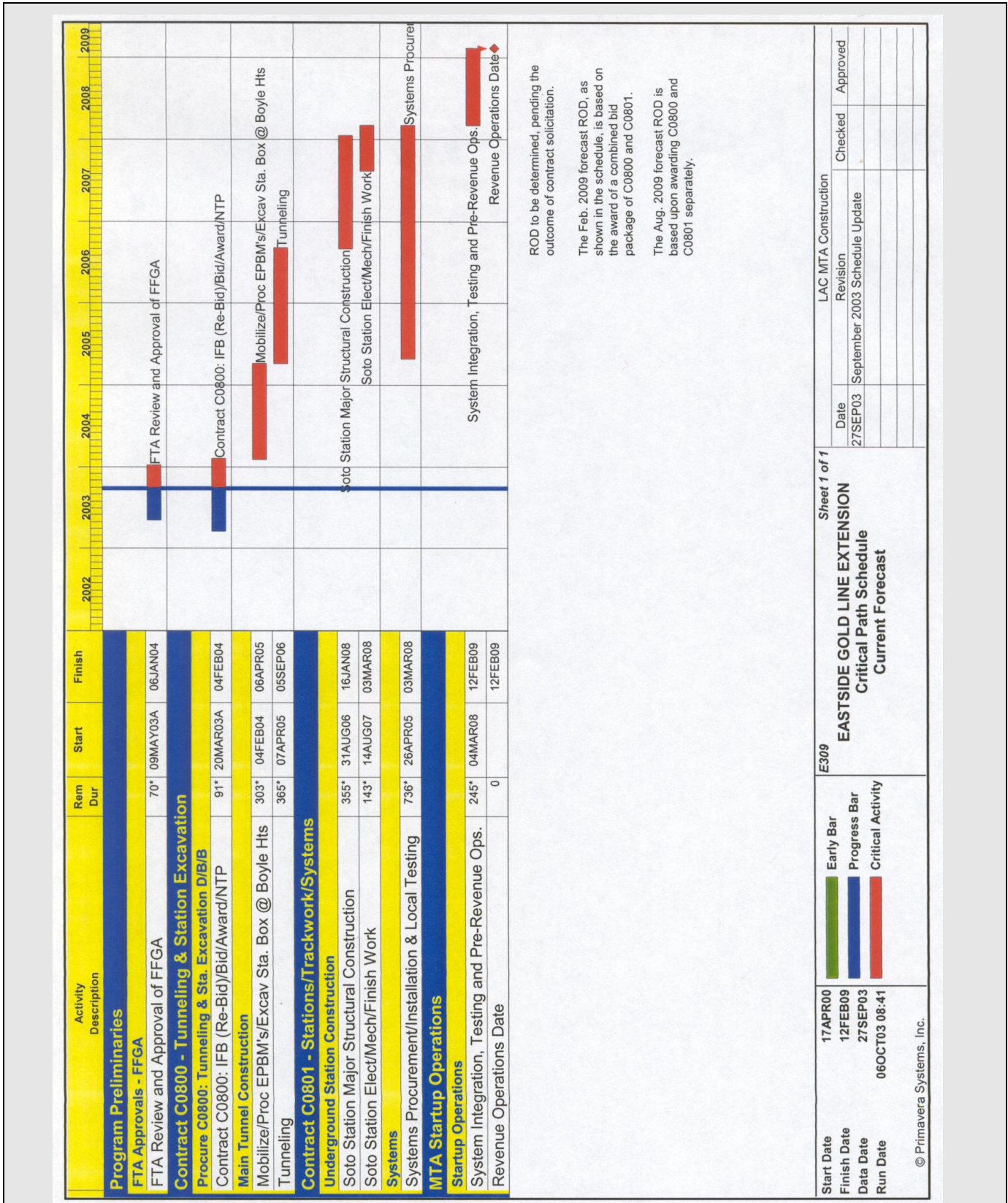
Note: Contract C0803 encompasses work scope of both Contract C0800 and C0801.

KEY MILESTONE SCHEDULE SIX-MONTH LOOKAHEAD

	Milestone Date	Sep-03	Oct-03	Nov-03	Dec-03	Jan-04	Feb-04
Notification of Qualification (Tech. Bids) - C0800, C0801 and C0803	9/22/03*	◆					
Caltrans Approve PSR/PR - 60 Freeway Undercrossing (C0801)	9/30/03*	△					
Final Package Submittal to CPUC: Grade Crossings (Batches: 4A, 5, 8, 9, 13 & 14)	10/17/03*		◆				
Price Bids Due - Contracts C0800, C0801 and C0803	11/19/03*			◆			
DBE Goal Forms Due - Contracts C0800, C0801 and C0803	11/24/03*			◆			
Price Bid Opening - Contracts C0800, C0801 and C0803	11/24/03*			◆			
Caltrans Approve PSR/PR - Cut & Cover at 101 Freeway (C0800)	11/30/03*			△			
Congressional Review/Approval of FFGA	12/29/03*				FTA		
Completion of Advanced Utility Relocations	12/31/03				◆		
FTA Execute FFGA	1/6/04*					FTA	
Award Construction Contract(s)	1/8/04*					◆	
MTA Review/Approve of Bonds & Insurance	2/4/04*						◆
Construction Notice To Proceed(s)	2/4/04*						◆
Contractor Commence Procurement of Tunnel Boring Machines	2/4/04*						◆

◆ MTA Staff Milestone	○ Eastside LRT Partners Deliverables	FTA FTA Approval
△ Other Agencies	* New Date	MTA Board Approval

PROJECT MASTER SCHEDULE CRITICAL PATH



CRITICAL PATH NARRATIVE

The critical path for the construction contract(s) begins with the contract award and Notice to Proceed (NTP) dates and ends with the Revenue Operations Date (ROD). Contract(s) can be awarded only after the Full Funding Grant Agreement (FFGA) has been executed. Execution of the FFGA requires a spot report by the FTA's Project Management Oversight Consultant (PMOC), which was submitted to FTA headquarters on September 26, 2003. After the spot report, it is anticipated that the next steps in the FFGA execution process are 30 calendar days for OST/OMB Review, 60 calendar days for Congressional review and 7 calendar days for FTA execution of the FFGA. Based on the above dates and durations, it is anticipated that an executed FFGA will be received in early January 2004. Therefore, a planned construction NTP would occur in early February and the planned ROD would be forecasted to occur in mid-February 2009, based upon the award of a combined bid package. Based upon the award of separate packages, ROD is forecasted to occur in mid-August 2009.

Upon the issuance of Notice To Proceed(s), there will be a 13-month lead time for the procurement of two Earth Pressure Balance Machines (EPBMs). Concurrent with the EPBM procurement, the project will proceed with mobilization, pile installation, and station box excavations. The station box excavations are scheduled to complete prior to the EPBMs delivery.

The critical path continues with EPBMs assemblies, excavation of both tunnels, excavation of crosspassages, and tunnel invert and walkway construction. The critical path then follows Soto underground station construction. The systems equipment installation and local facilities testing is the last stage of the critical path prior to entering the final test stage where systems integration testing and pre-revenue operations are conducted.

PROJECT COST STATUS

In \$ Million

Description	Previous Estimated Project Cost	Current Estimated Project Cost	Variance	Commitments	Expenditures
Guideways	287.0	287.0	0.0	0.0	0.0
Yards & Shops	35.6	35.6	0.0	0.0	0.0
Systems/Equipment	76.1	76.1	0.0	0.0	0.0
Stations	109.4	109.4	0.0	0.0	0.0
Vehicles	31.7	31.7	0.0	31.7	2.1
Special Conditions	55.0	55.0	0.0	12.1	1.6
Right-of-Way	53.0	53.0	0.0	51.0	20.1
Professional Services	145.3	145.3	0.0	54.8	47.2
Contingency	87.4	87.4	0.0	0.0	0.0
TOTAL	880.4	880.4	0.0	149.6	71.0

CHANGE CONTROL STATUS

	A	B		C		D=A+B+C	E	F=D+E	
	Approved					Obligated	Potential		
	Description	Award Amount	Executed Changes		LNTPs (NTE)		Total Approved Amount	Pending	
#			\$	#	\$	#		\$	
Engineering Design Services	18,929,502	11	12,073,328	0	0	31,002,830	0	0	31,002,830
Environmental Services	648,564	2	275,005	6	54,500	978,069	2	876,821	1,854,890
Design/Build Advisory Panel Services	1,059,840	0	0	0	0	1,059,840	0	0	1,059,840
Project Management Assistance Support	166,366	7	3,256,556	0	0	3,422,922	0	0	3,422,922
TOTAL	20,804,272	20	15,604,889	6	54,500	36,463,661	2	876,821	37,340,482

FINANCIAL/GRANT STATUS

SEPTEMBER 2003

STATUS OF FUNDS BY SOURCE

SOURCE	in \$ millions							
	(B)	(C)	(D)	(D/B)	(E)	(E/B)	(F)	(F/B)
	TOTAL FUNDS ANTICIPATED	TOTAL FUNDS AVAILABLE	COMMITMENTS \$	%	EXPENDITURES \$	%	BILLED to FUNDING SOURCE \$	%
FEDERAL - SECTION 5309 NEW START	490.7	17.3	76.1	16%	12.0	2%	12.0	2%
FED - SECTION 5309 FIXED GUIDEWAY	23.1			0%		0%		0%
FEDERAL - CMAQ	10.3			0%		0%		0%
REGIONAL IMPROVMNT PROG-FED	179.6	4.6	27.9	16%	4.6	3%	4.6	3%
REGIONAL IMPROVM PROG-STATE	0.6	0.6	0.6	100%	0.6	100%	0.6	100%
STATE TCRP	45.0	45.0	45.0	100%	40.4	90%	40.4	90%
PROP A 35% / PROP C 40% BONDS	121.0			0%		0%		0%
LEASE REVENUES	10.1			0%		0%		0%
UNBILLED ACCRUALS		13.3			13.3			
SUB-TOTAL	880.4	80.8	149.6	17%	71.0	8%	57.6	7%
PROP A/PROP C (INTEREST COST)	18.4	0.0	0.0	0%	0.0	0%	0.0	0%
TOTAL	898.8	80.8	149.6	17%	71.0	8%	57.6	6%

(1) Based on August 03 Adopted Short Range Transportation Plan (includes interest cost)
 NOTE: EXPENDITURES ARE CUMULATIVE THROUGH AUGUST 2003.

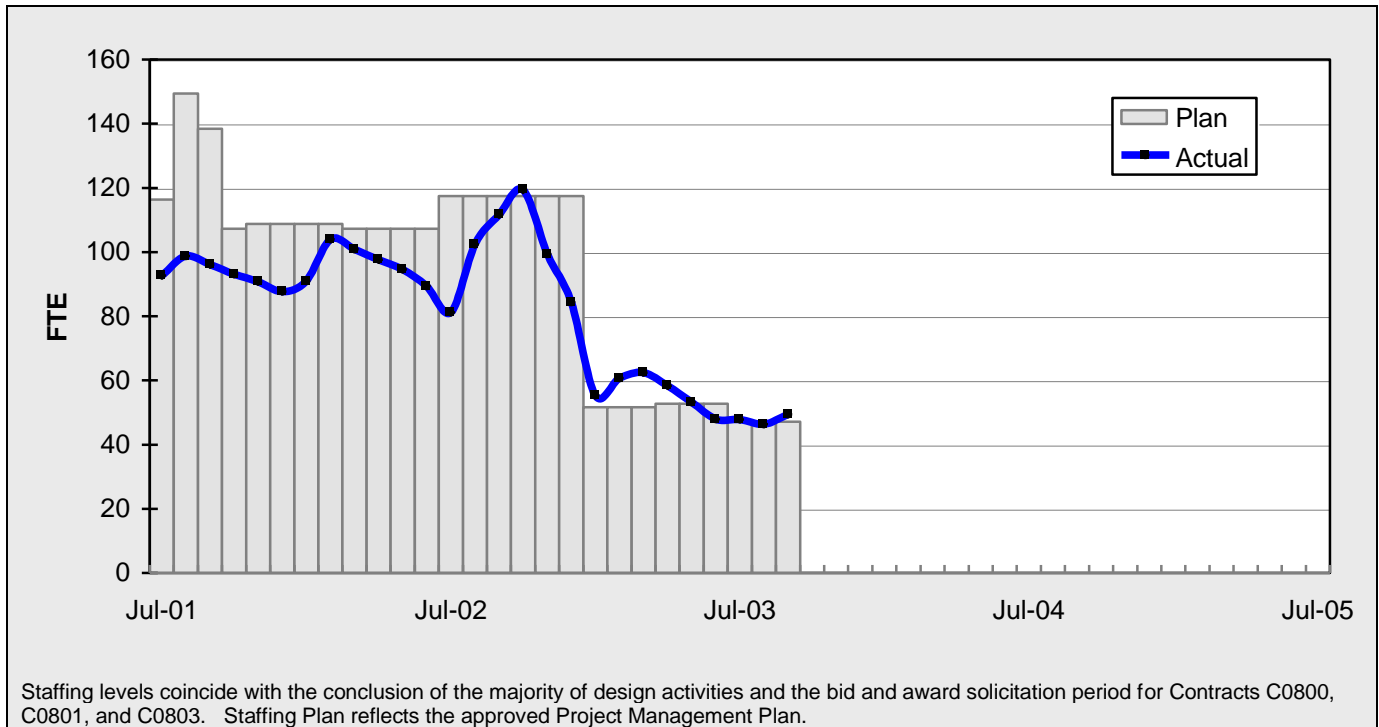
STATUS OF FUNDS ANTICIPATED

FEDERAL SECTION 5309: MTA submitted a grant amendment application CA-03-0508-04 for \$3,934,330 on April 18, 2003. Funds are available for draw down as of June 2003.

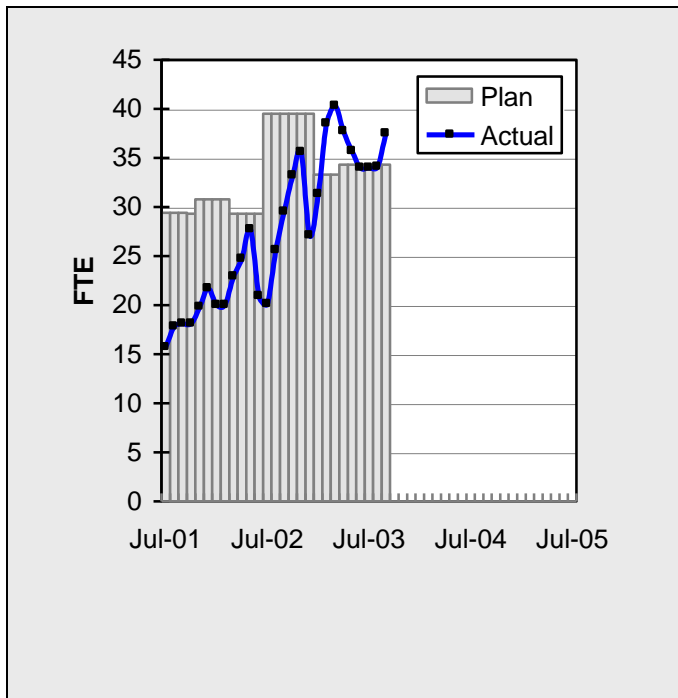
STATE TCRP: On April 3, 2003 the California Transportation Commission approved MTA's request to amend the STIP to convert \$191 million of unallocated TCRP funds to STIP funds. On August 25, 2003, MTA submitted a request for AB1335 Letter of No Prejudice (LONP) authority for Phase 4 construction activities. The LONP is scheduled for approval at the October 2003 CTC Meeting.

STAFFING STATUS

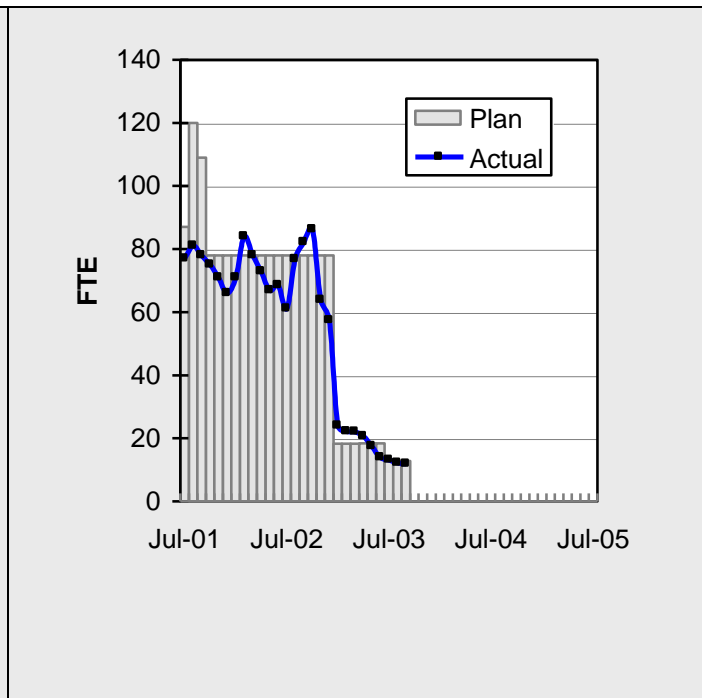
TOTAL PROJECT STAFFING



AGENCY STAFFING



ELRT PARTNERS



REAL ESTATE STATUS

- For C0800, the tunnel portion of the alignment, 43 parcels are required for acquisition (10 full takes, 16 sub-surface easements, 8 part takes, 5 sub-surface easements/building protection, 2 building protections, 1 street vacation and 1 permit from Caltrans which will be coordinated through MTA's Third Party Coordination).
- For C0801, the at-grade portion of the alignment, 35 parcels are required for acquisition (19 full takes, 9 partial takes, 3 street vacations, 2 access closures, and 2 permits required from Caltrans which will be coordinated through the MTA's Third Party Coordination office). Nine parcels have been identified for the proposed Ramona High School site reconfiguration.
- For C0802, 3 parcels are required (2 surface easements and 1 full take parcel).
- Sixty-one parcels have been certified, 39 for C0800, 20 for C0801 and 2 for C0802. Offers have been made to 29 property owners. A total of 14 parcels have been acquired (8 under C0800, 5 under C0801, and 1 under C0802). Three parcels are in condemnation and the MTA Board approved the Resolution of Necessity to Condemn one additional parcel. Real Estate is in negotiations with the other property owners.

REAL ESTATE ACQUISITION SCHEDULE SUMMARY

<i>Number of Parcels</i>	Required	Acquired	On Schedule	Behind Schedule	
				Number	Avg. Calendar Days
This Period	81	14	67	0	0
Last Period	81	13	68	0	0

REAL ESTATE STATUS TO DATE BY CONTRACT

Actual Parcels

Contract	No. of Parcels	Certified	Just Comp Approved	Offers Made	Agreements Signed	Condemnation	Parcels Available	Parcels projected to be unavailable by need date
C0800	43	39	16	15	8	3	8	0
C0801	35	20	10	12	5	0	5	0
C0802	3	2	2	2	1	0	1	0
TOTAL	81	61	28	29	14	3	14	0
Last Period Total	81	61	23	28	14	3	13	0

ENVIRONMENTAL STATUS

- Completed negotiations with environmental contractors for “urgent and emergency services.”
- Exxon-Mobil completed removal of underground storage tanks at gas station.

COMMUNITY RELATIONS STATUS

- Coordinated public outreach events with community representatives to facilitate public interest in the Metro Gold Line Eastside Extension Project.
- Conducted meetings with business owners to discuss pre-construction activities impact mitigation.
- Continued education campaign on advanced utility relocation and circulated construction notices on active relocations.
- Continued coordination of pre-construction survey activities with Pinnacle One.

QUALITY ASSURANCE STATUS

- Quality Management conducted a surveillance of the Eastside Partners design review processes for C0803.

SAFETY STATUS

- Participated in bi-weekly progress meetings with Construction Management to discuss safety related issues and construction schedule.
- Participated in weekly meetings with the Department of Water and Power (DWP) and the Gas Company regarding utility relocation.
- Monitored utility relocation activities to ensure safety compliance.

THIRD PARTY AGREEMENT STATUS

Third Party	Type of Agreement	Forecast Execution Date	Required Need Date	Status/ Comments
City of Los Angeles	Amendment	Complete	N/A	Fully executed on 12/23/02.
Los Angeles County	Master	Complete	N/A	Execution completed 4/1/03.
Caltrans (All Projects)	Master	Complete	N/A	MTA execution completed 5/7/03. Full execution by Caltrans occurred in July.
Caltrans (101)	Design	Complete	N/A	MTA execution completed by 5/7/03. Full execution by Caltrans occurred in July.
Caltrans (101)	Construction	Complete	N/A	MTA execution completed 6/16/03. Full execution by Caltrans occurred in September.
Caltrans (101)	Maintenance	1/04	6/07	Initial negotiation meeting on 1/9/03 resulted in MTA's recommendation to use the existing agreement with a similar San Diego system. The San Diego agreement was forwarded to MTA on 1/29/03. MTA received a draft from Caltrans on 4/10/03. MTA returned the agreement to Caltrans on 4/22/03 with comments. After a negotiation meeting held on 7/29/03, a draft agreement from Caltrans was anticipated to be forwarded to MTA on 8/1/03 for review. Not received as of 9/27/03.
LADWP (Water)	Amendment	11/03	1/04	Draft amendment submitted. Awaiting LADWP concurrence to use existing MCA until an amendment is executed. Discussions are ongoing.
LADWP (Power)	Amendment	11/03	1/04	LADWP signed off 3/13/03 to work under the previous MCA until an amendment is executed.
So. Cal. Edison Co.	Amendment	11/03	1/04	Draft amendment was sent to SCE on 10/24/02.
The Gas Company	Amendment	11/03	1/04	The Gas Co. has been and will continue to work under previous agreement until an amendment is executed.
Pacific Bell	Amendment	11/03	1/04	Another draft agreement was sent to Pac Bell on 2/4/03. PacBell responded on 4/17/03 with additional markup, which is being reviewed by MTA Legal.
Adelphia Cable Company	Amendment	11/03	1/04	Letter sent to Adelphia on 11/1/02 asking concurrence to use existing MCA until an amendment is executed.
California Water Service Company	Master	11/03	1/04	A revised draft was submitted 4/23/03 to Legal for review. Following legal review, the amendment is being re-drafted to be sent to California Water.

THIRD PARTY AGREEMENT STATUS (Continued)

Third Party	Type of Agreement	Forecast Execution Date	Required Need Date	Status/ Comments
L.A.County Sanitation Districts	N/A	Complete	N/A	Sanitation District letter dated 3/26/03 stated no need for an agreement since there are no relocations necessarily related to their facilities. They will review the submittals related to encasement for their facility on Indiana Street.
MCI Worldcom	Amendment	11/03	1/04	A revised draft amendment using the new format was sent to MTA Legal on 4/23/03 for review. Following legal review, the amendment is being re-drafted to be sent to MCI.
Metropolitan Water District	Amendment	Complete	N/A	1/7/03 meeting resulted in using the existing agreement. A letter was sent to MWD on 4/1/03 for their concurrence. Concurrence was executed by MWD on 4/21/03 and received on 5/12/03.
Verizon Wireless	Amendment	12/03	1/04	An amendment was drafted and sent to MTA Legal on 4/23/03 for review.
AT & T Local Services	Amendment	12/03	1/04	An amendment was drafted and sent to MTA Legal on 4/7/03 for review.
GST	N/A			Facilities are not impacted by Eastside Construction
Exxon Mobil Oil Company	N/A			Facilities are not impacted by Eastside Construction
Pacific Pipeline Company	N/A			Facilities are not impacted by Eastside Construction
Kinder Morgan Pipeline Company	N/A			Facilities are not impacted by Eastside Construction
Tosco Refining Company	N/A			Facilities are not impacted by Eastside Construction
Equilon Pipeline Company	N/A			Facilities are not impacted by Eastside Construction
Level 3 Communications	N/A			Facilities are not impacted by Eastside Construction
Broadwing Communications	N/A			Facilities are not impacted by Eastside Construction
Eller Media	N/A			Facilities are not impacted by Eastside Construction
Qwest-SP Telecom	N/A			Facilities are not impacted by Eastside Construction

CPUC CROSSING SUMMARY

Batch	Status	Initial Package Submittal to MTA	Field Diagnostic Meeting	Revised Drawings Due to MTA	Draft Write-up to MTA	Draft Package Submittal to PUC Local office and Agencies	Final Package Submittal to PUC
1	Complete	8/5/02	8/12/02	8/26/02	9/6/02	9/6/02	9/6/02
2	Complete	10/4/02	10/11/02	10/25/02	11/6/02	11/22/02	11/22/02
3	Complete	2/6/03	2/27/03	3/10/03	1/27/03	4/11/02	4/18/03
4	Completed	12/14/02	1/15/03	1/29/03	11/13/02	5/5/03	6/18/03
4A	In Progress	1/24/03	1/29/03	3/14/03	2/7/03	9/5/03	10/17/03
5	In-Progress	3/19/03	8/29/03	9/30/03	2/28/03	10/17/03	10/31/03
6	Complete	3/19/03	3/26/03	6/20/03	2/7/03	9/5/03	9/12/03
7	Complete	12/11/02	12/18/02	3/31/03	2/7/03	5/5/03	7/25/03
8	In Progress	11/26/02	12/18/02	3/31/03	11/15/02	6/6/03	10/10/03
9	Complete	1/20/03	1/29/03	3/31/03	11/22/02	8/29/03	9/12/03
10	Complete	12/11/03	12/18/02	3/10/03	11/22/02	5/5/03	8/29/03
11	Complete	2/13/03	2/27/03	4/18/03	12/6/02	6/6/03	8/29/03
12	Complete	2/13/03	2/27/03	4/18/03	12/13/02	6/6/03	9/5/03
13	In Progress	2/6/03	2/20/03	4/18/03	2/21/03	6/6/03	10/10/03
14	In Progress	1/8/03	1/15/03	3/14/03	11/12/02	8/29/03	10/3/03
15	Complete	2/26/03	N/A	N/A	2/21/03	6/6/03	8/29/03
16	Complete	2/26/03	N/A	N/A	2/28/03	6/6/03	8/29/03
17	Complete	1/8/03	1/15/03	N/A	2/14/03	5/5/03	6/13/03
18	Complete	1/8/03	1/15/03	3/20/03	2/14/03	5/5/03	6/13/03
Agency Responsible		ELRTP	MTA	ELRP	ELRTP	MTA	MTA

A number of applications, although technically finalized, have not yet been submitted due to the backlog of submittals. MTA and PUC staff agreed to have MTA submit all applications within three weeks of this update to allow for initiation and completion of the 30 day public review period.

Batch Descriptions and Order of Submission to PUC			
1	1st / Alameda	15	1st / Santa Fe
2	Alameda / Temple		1st / Myers
	1st / Hewitt	16	1st / MTA
	Ped Crossings @ 1st / Alameda Station		1st / BNSF
4	1st / Lorena		1st / Union Pacific
3	1st / Vignes	11	3rd / Mednik
10	3rd / Ford		3rd / Civic Center Drive
	3rd / McDonnel		3rd / La Verne
	3rd / Arizona	12	3rd / Drveways to Sherriff's Station
4A	1st / Indiana		3rd / Wood / Via Corona / Pomona / Beverly
	3rd / Indiana		Pomona/Atlantic
	Indiana / Gleason Pedestrian Crossing	13	3rd / 60 Fwy WB Connector
14	Union Station Service Road		3rd / 60 Fwy over ELRT
7	3rd / Ditman		3rd / 710 Fwy SW Connector
	3rd / Rowan		3rd / Bridge over 710 Fwy
8	3rd / Gage		3rd / 710 Fwy SE Connector
	3rd / 60 Fwy WB Ramps	5	Ducommun / Hewitt
	3rd /Downey		Ducommun / Garey
9	3rd / Marianna		Ducommun / Vignes
	3rd / Eastern		Ducommun / Center
	3rd / 710 SB On-Ramp	6	1st / Mission
17	US 101 Fwy Overcrossing		1st / Anderson
18	Commercial Street Overcrossing		1st / Clarence
			1st / Utah

FFGA APPLICATION DOCUMENT CHECKLIST SUPPORTING DOCUMENTS

DOCUMENT	AGENCY	STATUS/COMMENTS
Value Engineering	MTA	Complete.
Record of Decision/FONSI	FTA	Complete.
Quality Management Plan	MTA	FTA approved for current stage.
FSTIP Approval	SCAG	Complete. Included in 10/4/02 FSTIP.
Annual Certifications/ Assurances	MTA	Complete.
Financing Plan	MTA	Submitted to FTA for review.
Rail Fleet Management Plan	MTA	FTA approved for current stage.
Bus Fleet Management Plan	MTA	FTA approved for current stage.
Real Estate Acquisition Plan	MTA	FTA approved plan.
Submit System Safety Program Plan to CPUC	MTA	Revised plan was submitted to the CPUC and finalized.
Department of Labor (13c) Certification	DOL	Complete.
Civil Rights Program Review	FTA	Entered grant in TEAM. Waiting for approval.
Before and After Study Plan	MTA	MTA working with FTA on final version.
Risk Assessment	MTA	Complete.
Financial Capacity Review	FMO	MTA submitted comments to draft report. Waiting for final report.
Spot Report (as needed)	FMO/PMOC	Final PMOC Spot Report issued on 9/23/03 and Final FMO Spot Report issued on 9/24/03.
Project Management Plan	MTA	FTA approved plan for inclusion in FFGA.

FFGA APPLICATION DOCUMENTS

DOCUMENT	AGENCY	STATUS/COMMENTS
Part I – Full Funding Grant Agreement	FTA	Final Part 1 sent to Region IX.
Attachment 1 – Scope of Project	MTA	Final attachment submitted to Region IX.
Attachment 1A – Project Map	MTA	Final attachment submitted to Region IX.
Attachment 2 – Project Description	MTA	Final attachment submitted to Region IX.
Attachment 3 – Baseline Cost Estimate	MTA	Final attachment submitted to Region IX.
Attachment 3A – Project Budget	MTA	Final attachment submitted to Region IX.
Attachment 4 – Baseline Schedule	MTA	Final attachment submitted to Region IX.
Attachment 5 – Schedule of Prior Grants and Related Documents	MTA	Final attachment submitted to Region IX.
Attachment 6 – Schedule of Capital New Starts Funds	MTA	Final attachment submitted to Region IX.
Attachment 7 – Measures to Mitigate Environmental Impacts	MTA	Final attachment submitted to Region IX.
Attachment 8 – Before and After Study	MTA	FTA approved plan. Final attachment submitted to Region IX.
Region IX to HQ FFGA Recommendation Memo	FTA	Complete.
Submittal of paper grant application (5309) and TEAM application (Part II – FFGA included)	MTA	TEAM applications CA-90-Y056-01 and CA-03-0508-05 submitted for FTA approval.

FFGA EXECUTION PROCESS

DOCUMENT	AGENCY	TARGET DATE	STATUS/COMMENTS
FTA letter to Congress	FTA	10/03	
Congressional Review	Congress	10/03-12/03	
Environmental Permits & Biological Determination	TBD	TBD	TBD if needed
FTA Approval Letter to Grantee	FTA	12/03	
Review/Execution of FFGA	FTA	1/04	

CONTRACT P2550 STATUS

<div>Description: 2550 Rail Vehicle Program</div> <div>Contractor: AnsaldoBreda, Italy</div>	<div>Contract No.: P2550</div> <div>MTA Project: 800151</div> <div>Status as of: September 30, 2003</div>					
<div>Progress/Work Completed:</div> <div><div><div>• MTA has met with Contractor Engineering and Production personnel during June '03 in the Italian Facility to review the contract milestones and LRV Cars production schedules.</div><div>MTA has started Consultant Services Design/Engineering reviews and Car Manufacturer Design/Engineering reviews at the L.A in July 2003. The Car Manufacturer has continues the completion of the engineering, production and drawing submittal schedules for the full term of the project, including vehicle delivery schedule.</div><div>• Sept. 30 through Oct 1, 2003 Program progress status presented at MTA Office by AnsaldoBreda Vice President and Project Engineer.</div><div>• Structural weldment tests begin week of Oct. 12. Understructure manufacturing material arrivals start week of Oct. 18, 2003.</div><div>• Introduced communication enhancements through ProjectQuest.</div></div></div> <div>Areas of Concern:</div> <div><div>• Finalization of engagements for all prime and sub-vendors that will impact production line and delivery schedule of the 2550 Rail Vehicle Program.</div></div>	<div>Major Activities (In Progress):</div> <div><div>• Contractor has continued the Milestone 1A and Milestone 2A work.</div></div> <div>Major Activities Next Period:</div> <div><div>• Complete all deliverable items listed under Milestone 1A (see Table A of Contract Milestone Payments) for the approval of engineering, production and drawing submittal schedules, and approval of the first schedule for the full term of the project, including vehicle delivery schedule.</div><div>• Contractor Milestone 1A payment adjustment consistent with the demonstrated level of progress. Outstanding data continues to be delivered and weekly teleconfernce meeting established to monitor technical design and production development of the 2550 rail vehicles.</div><div>• Continue the completion of Milestone 2a (see Table A of Contract Milestone Payments) for the approval of Contractor's Preliminary 13-Week Schedule, and delivery of copies of subcontracts for:<div><div>• Systems Engineering</div><div>• Air Conditioning</div><div>• Car shell and Articulation</div><div>• Train Control</div><div>• Propulsion</div><div>• Braking</div><div>• Truck Frame</div><div>• Door Controls</div><div>• User Education, including all manuals</div></div></div></div>					
<div>Schedule Summary:</div> <div><div><div>Date of Award:</div><div>04/24/03</div></div><div><div>Notice to Proceed:</div><div>06/06/03</div></div><div><div>Original Contract Duration:</div><div>1460 CD</div></div><div><div>Current Contract Duration:</div><div>1460 CD</div></div><div><div>Elapsed Time from NTP:</div><div>116 CD</div></div><div><div>Option 1 & 2 Contract duration</div><div>1460 CD**</div></div><div><div>** after starting options 1 & 2</div></div></div>		Original Contract Dates	Time Extension	Current Contract	Forecast	Variance CDs
	Notice to Proceed	06/06/03	0	6/06/03A	6/06/03A	0
	Milestone 1A - Approval of Engineering Production Plan	08/08/03	0	08/08/03	10/15/03	0
	Milestone 2A - Approval of Contractor's Prelim. 13 weeks schedule	09/05/03	0	09/05/03	11/15/03	0
	Milestone 14A - Acceptance of two First Article Vehicles	12/02/05	0	12/02/05	12/02/05	0
<div>Physical Percent Complete:</div> <div>(to be available and reported during October 2003)</div>	<div>Cost Summary:</div> <div>\$ In millions</div> <div><div>1. Award Value:</div><div>158.74</div><div>(Metro Gold Line Eastside Ext Only:</div><div>31.75)</div><div>2. Executed Modifications:</div><div>0.00</div><div>3. Approved Change Orders:</div><div>0.00</div><div>4. Current Contract Value (1 + 2 + 3):</div><div>158.74</div><div>5. Pending Changes:</div><div>0.00</div><div>6. Incurred Cost:</div><div>0.00</div></div>					

ADVANCED UTILITY RELOCATIONS



ADVANCED UTILITY RELOCATIONS



1st Street east of Soto

ADVANCED UTILITY RELOCATIONS



Hand trenching along 1st Street

ADVANCED UTILITY RELOCATIONS



1st Street west of Pecan

CURRENT PROJECT RENDERINGS



Computerized Rendering of Proposed
Metro Gold Line Eastside Extension
Guideway Bridge at the 101 Freeway



Little Tokyo/Arts District Station

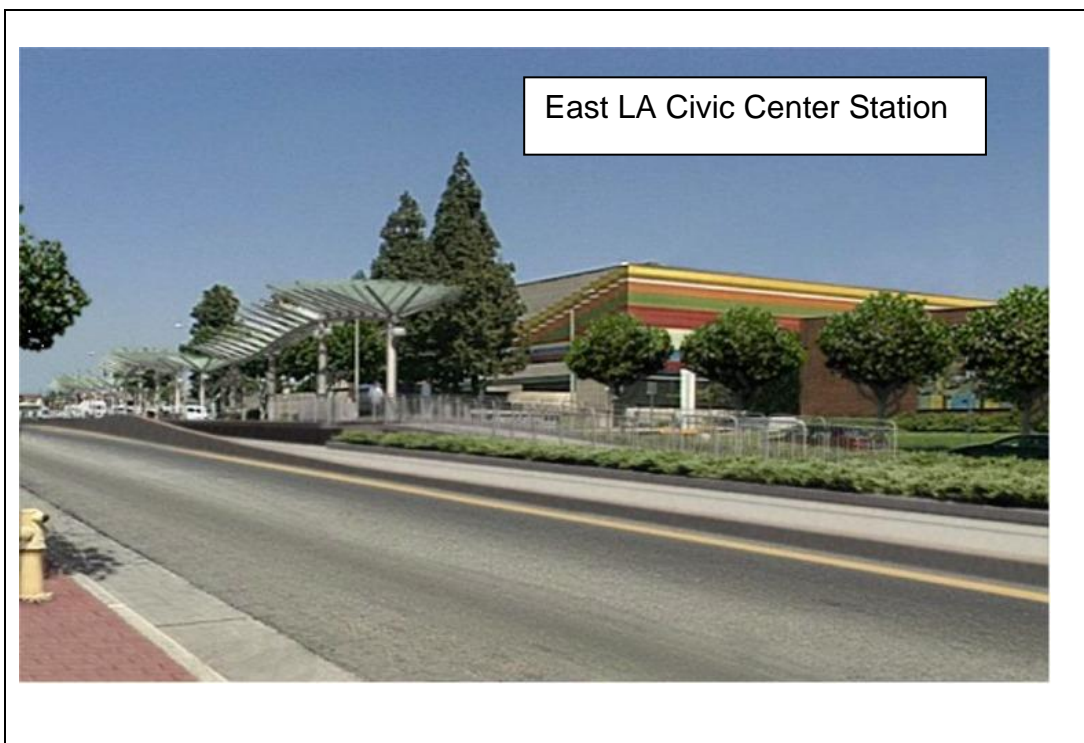
CURRENT PROJECT RENDERINGS



CURRENT PROJECT RENDERINGS



CURRENT PROJECT RENDERINGS



APPENDIX

COST AND BUDGET TERMINOLOGY

ESTIMATED PROJECT COSTS: Estimated project costs are based upon the current project cost estimates that are produced during the engineering design phase.

COMMITMENTS: The total of actual contract awards, executed change orders or amendments, approved work orders of Master Cooperative Agreements, offers accepted for purchase of real estate, and other LACMTA actions that will result in specific expenditures at a future time.

INCURRED COST: The total value of work performed to date of services received, and acquired materials or properties.

EXPENDITURES: The total dollar amount of checks written by LACMTA's Accounting department for contractor or consultant invoices, third party invoices, staff salaries, and closing payments for escrow accounts that is reported in LACMTA's Financial Information System (FIS).

CONSTRUCTION: Includes guideways, yards and shops, systems equipment, stations, and vehicles.

PROFESSIONAL SERVICES: Includes general engineering, construction management services, consultant design support services during construction, legal counsel, and agency (MTA staff) costs.

RIGHT-OF-WAY: Includes real estate appraisals, purchase cost of parcels, easements, right-of-entry permits, escrow fees, and tenant relocation.

UTILITY/AGENCY FORCE ACCOUNT: Includes work by outside agencies and utilities in design coordination and review.

CONTINGENCY: A fund established at the beginning of a project to provide for anticipated but unknown additional costs that may arise during the course of the project.

SPECIAL CONDITIONS: Includes utilities relocation, environmental compliance and mitigation, master cooperative agreements, insurance program, artwork, systems integration testing and pre-revenue operations.

APPENDIX

LIST OF ACRONYMS

AFE	Authorization For Expenditure
ATC	Automatic Train Control
CADD	Computer Aided Drafting and Design
CALTRANS	California Department of Transportation
CD	Calendar Day
CM	Construction Manager
CMAC	Congestion Mitigation Air Quality
CN	Change Notice
CO	Change Order
CPM	Critical Path Method
CPUC	California Public Utilities Commission
CR	Camera Ready
CTC	California Transportation Commission
CUD	Contract Unit Description
DB	Design/Build
DBB	Design/Bid/Build
DD	Design Development
DOT	Department of Transportation
DWP	Department of Water and Power
EIR	Environmental Impact Report
EIS	Environmental Impact Statement
EPBM	Earth Pressure Balance Machine
ESP	Eastside LRT Partners
FAR	Federal Acquisition Regulation
FD	Final Design
FEIS	Final Environmental Impact Statement
FEIR	Final Environmental Impact Report
FFGA	Full Funding Grant Agreement
FIS	Financial Information System
FSEIR	Final Supplemental Environmental Impact Report
FSEIS	Final Supplemental Environmental Impact Statement
FTA	Federal Transit Administration
FTE	Full Time Equivalent
GDSR	Geotechnical Design Summary Report
IFB	Invitation for Bid
IPO	Integrated Project Office
JV	Joint Venture
LA	Los Angeles
LABOE	Los Angeles Bureau of Engineering
LACFCD	Los Angeles County Flood Control District
LACMTA	Los Angeles County Metropolitan Transportation Authority
LADOT	Los Angeles Department of Transportation

**APPENDIX
LIST OF ACRONYMS (Continued)**

LADPW	Los Angeles Department of Public Works
LADWP	Los Angeles Department of Water and Power
LAUSD	Los Angeles Unified School District
LNTP	Limited Notice To Proceed
LONP	Letter Of No Prejudice
LRT	Light Rail Transit
LRTP	Long Range Transportation Plan
LRV	Light Rail Vehicle
MIS	Major Investment Study
MPSR	Monthly Project Status Report
MTA	Metropolitan Transportation Authority
N/A	Not Applicable
NEPA	National Environmental Protection Act
NPDES	National Pollution Discharge Elimination System
NTE	Not to Exceed
NTP	Notice To Proceed
OCIP	Owner-Controlled Insurance Program
P3	Primavera Project Planner® (scheduling software)
PC	Project Control
PE	Preliminary Engineering
PEER	Permit Engineering Evaluation Report
PGL	Pasadena Gold Line
PIP	Project Implementation Plan
PM	Project Manager
PMA	Project Management Assistance
PMIP	Project Management Implementation Plan
PMOC	Project Management Oversight Consultant
PMP	Project Management Plan (manual)
P&P	Policies & Procedures
PR	Project Report
PSR	Project Study Report
QA	Quality Assurance
QAR	Quality Assurance Report
QC	Quality Control
QPSR	Quarterly Project Status Report
RAC	Review Advisory Committee
RAG	Rail Activation Group
RFC	Request For Change
RFP	Request For Proposal
ROD	Record Of Decision
ROD	Revenue Operations Date
ROM	Rough Order of Magnitude

**APPENDIX
LIST OF ACRONYMS (Continued)**

ROW	Right-Of-Way
SCAQMD	Southern California Air Quality Management District
SCE	Southern California Edison
SCRRA	Southern California Regional Rail Authority
SHA	State Highway Account
SHPO	State Historic Preservation Office
SIT	System Integration Testing
SOV	Schedule Of Value
SOW	Statement Of Work
SP	Special Provision
STIP	State Transportation Improvement Program
STP	Surface Transportation Program
TBD	To Be Determined
TBM	Tunnel Boring Machine
TCRP	Traffic Congestion Relief Program
TPSS	Traction Power Substation
TRACS	Transit Automatic Control System
UFS	Universal Fare System
USDOT	U.S. Department Of Transportation
VE	Value Engineering
WBS	Work Breakdown Structure
WP	Work Package