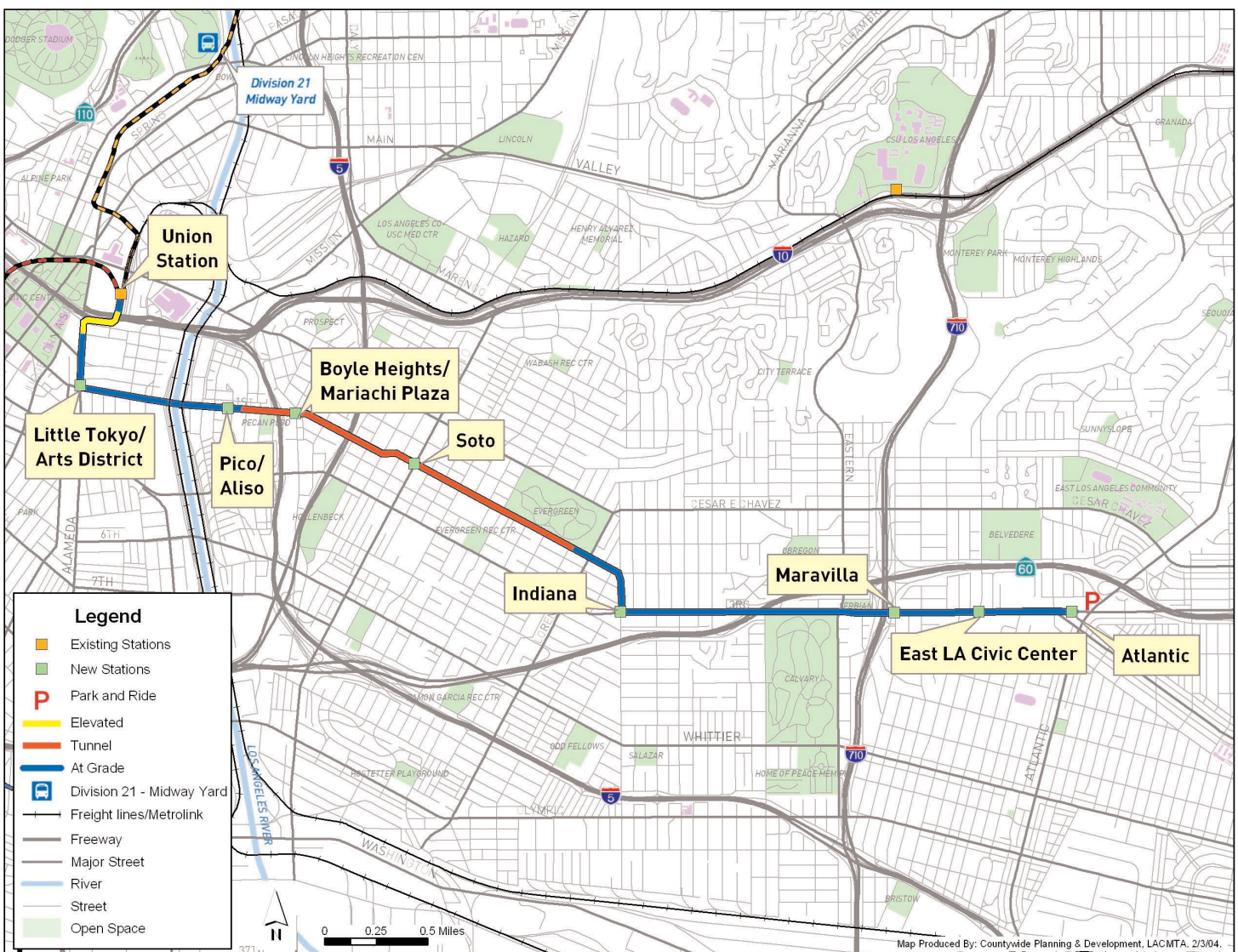


November 2004

Metro Gold Line Eastside Extension



METRO GOLD LINE EASTSIDE EXTENSION

MONTHLY PROJECT STATUS REPORT

THE PREPARATION OF THIS DOCUMENT HAS BEEN FINANCED IN PART THROUGH A GRANT FROM THE U. S. DEPARTMENT OF TRANSPORTATION, FEDERAL TRANSIT ADMINISTRATION (FTA), UNDER THE FEDERAL TRANSIT ACT OF 1964, AS AMENDED, AND FUNDS FROM THE STATE OF CALIFORNIA.

NOVEMBER 2004

TABLE OF CONTENTS

	Page No.
Project Overview.....	1
Management Issues.....	2
Project Status	
• Project Scope.....	3
• Schedule	
○ Key Milestones Six-Month Lookahead	4
○ Project Master Schedule Critical Path.....	5-10
○ Critical Path Narrative	11
• Project Cost Status.....	12
• Financial/Grant Status.....	13
• Staffing.....	14-15
• Real Estate.....	16
• Environmental.....	17
• Community Relations.....	17
• Quality Assurance.....	17
• Safety.....	18
• Third Party.....	19-23
• CPUC Crossing.....	24
Contract C0803 Status	25
Contract P2550 Status	26
Construction Photographs	27-28
Appendices.....	29-32

PROJECT OVERVIEW

The Metro Gold Line Eastside Extension Project is a six-mile, dual track light rail system with eight new stations and one station modification. The system originates at Union Station in downtown Los Angeles, where it connects with the Pasadena Gold Line, traveling generally east to Pomona and Atlantic Boulevards. The system will bridge State Route 101 Freeway and traverse the existing 1st Street Bridge over the Los Angeles River. The system will travel south on Alameda Street and then east on 1st Street with two stations at Alameda and Utah Streets. East of the Los Angeles River and 1st and Utah Streets, the alignment transitions to tunnel for approximately 1.7 miles, and continues beneath 1st Street to underground stations at 1st Street and Boyle Avenue and 1st Street and Soto Street. The alignment returns to the surface near the intersection of 1st Street and Lorena Streets, then jogs to the south, transitioning to follow 3^d Street with stations at Indiana Street, Ford Boulevard, Mednik Avenue and Pomona and Atlantic Boulevards.

Final design of the Boyle Heights/Mariachi Plaza Station is underway. The Design/Builder has also began the design basis, geotechnical report and alignment design.

Procurement of the concrete steel decking and beams has begun. Delivery of the soldier piles to the site staging areas is continuing. Soldier pile installation is scheduled to start by mid-December 2004 for the Boyle Heights/Mariachi Plaza Station.

Building demolition has completed at the 1st Street/Boyle Avenue area and is nearing completion at the 1st Street/Soto Street area. Wet utility relocations are continuing at the Boyle Heights/Mariachi Plaza Station and West Portal locations.

All grade crossing applications have been submitted to the California Public Utilities Commission (CPUC) for review. Of the 41 grade crossings, 30 have been approved. The approvals of the remaining crossings are anticipated to occur by the end of 2004, according to the CPUC.

The contractor for Contract C0802 – 101 Freeway Bridge Overcrossing has begun site mobilization and site demolition.

MANAGEMENT ISSUES

No Management Issues for the period ending November 2004.

PROJECT SCOPE

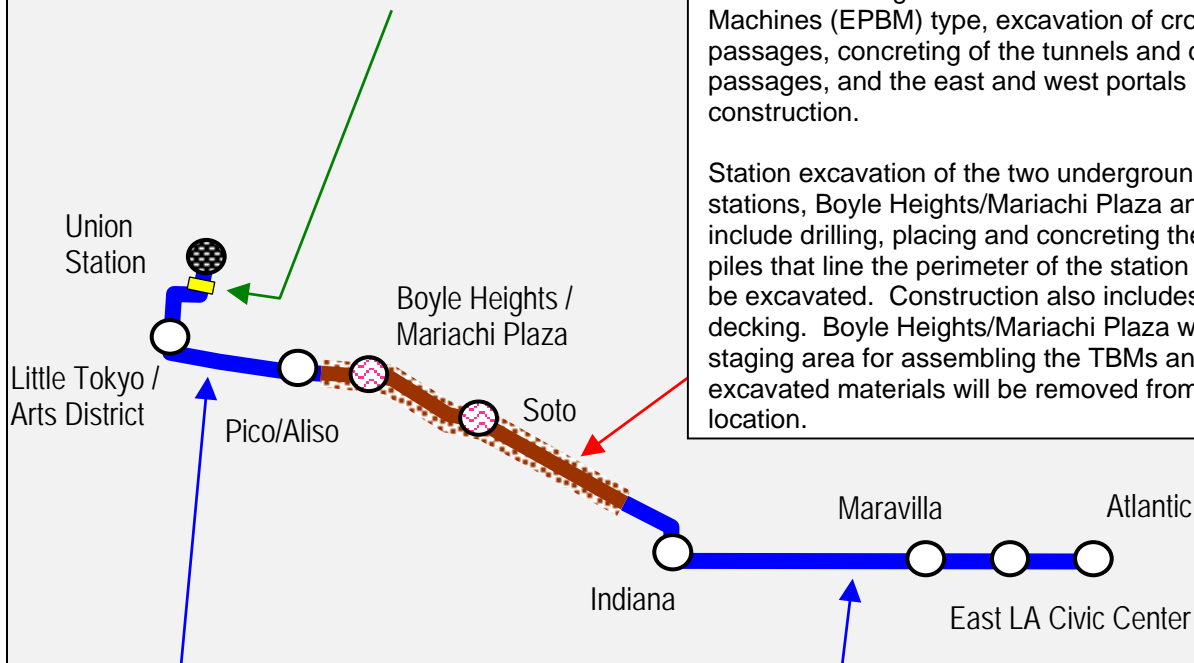
Contract C0802 – 101 Freeway Bridge

Overcrossing: The construction of the bridge is combined with Caltrans freeway improvements project. While Caltrans will administer the construction, MTA will provide oversight and is responsible for the construction costs of the bridge overcrossing.

Contract C0803 - Tunnel and Station

Excavation (Design/Bid/Build): Construction of the 1.7 mile tunnel segment includes tunnel excavation using two Earth Pressure Balance Machines (EPBM) type, excavation of cross passages, concreting of the tunnels and cross passages, and the east and west portals construction.

Station excavation of the two underground stations, Boyle Heights/Mariachi Plaza and Soto, include drilling, placing and concreting the soldier piles that line the perimeter of the station box to be excavated. Construction also includes street decking. Boyle Heights/Mariachi Plaza will be the staging area for assembling the TBMs and all excavated materials will be removed from this location.







Contract C0803 - Stations, Trackwork, and Systems (Design/Build): Construction of the two underground stations includes structural walls, station platforms, mezzanines, station entrances, and plazas, architectural finishes and all related mechanical and electrical work.

Construction of the six-mile alignment includes six at-grade stations, trackwork installation and testing for the entire alignment.

Systems installation and testing is inclusive of power systems, automatic train control, fire and emergency management, TRACS and communications systems. The contractor will be responsible for systems integration testing for the entire line segment prior to pre-revenue operations.

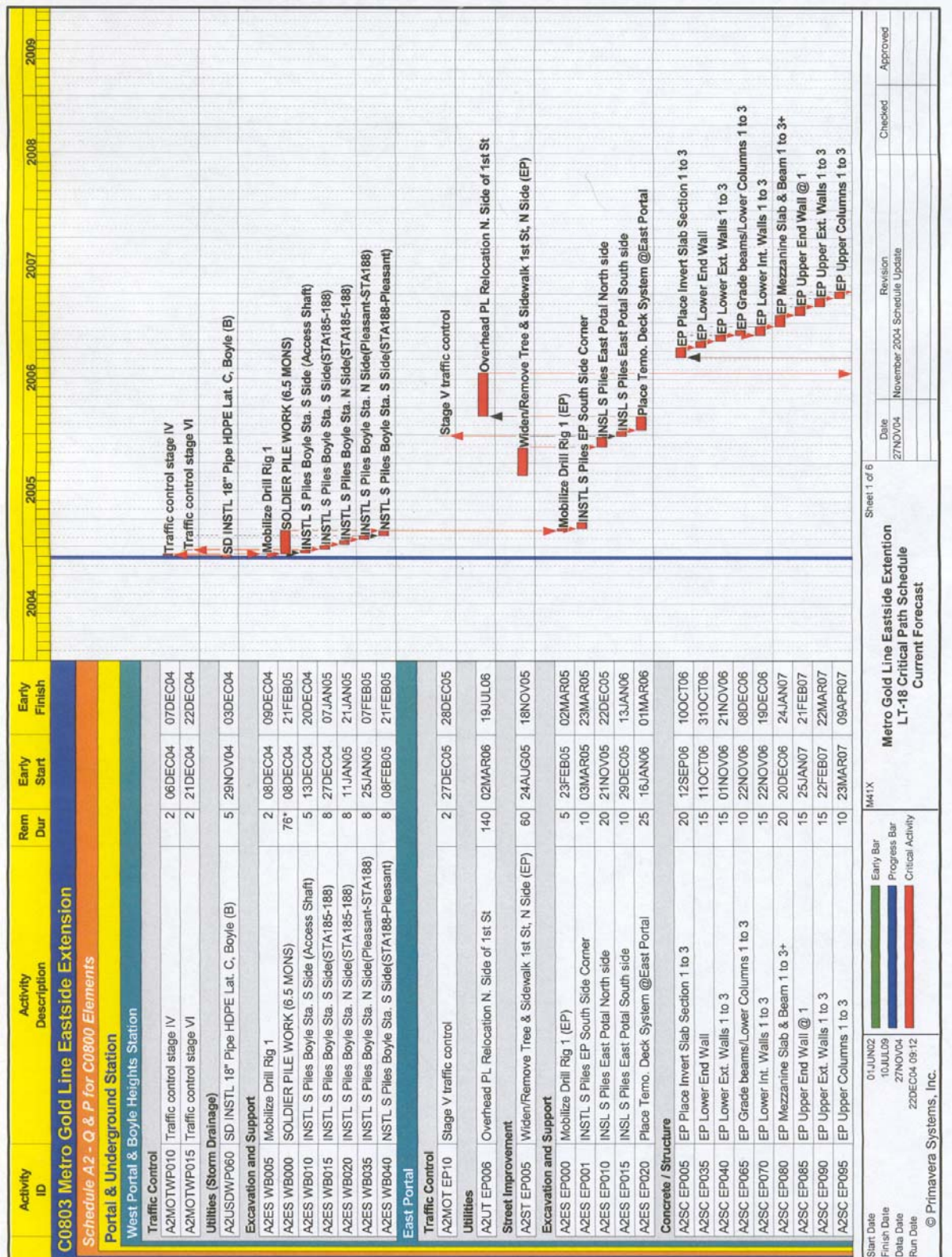
KEY MILESTONE SCHEDULE SIX-MONTH LOOKAHEAD

	Milestone Date	Nov-04	Dec-04	Jan-05	Feb-05	Mar-05	Apr-05
MTA approval of Baseline CPM Contract Schedule	11/10/04	○					
Commence Removals of Gas Pumps and Underground Gas Tank at 1st/Soto Station Area	12/3/04		○				
Commence Soldier Pile Installation at 1st/Boyle Station	12/8/04*		○				
Complete Lead/Asbestos Abatements and Building Demolitions at 1st/Boyle and 1st/Soto Sites	12/10/04*		○				
Commence 1st St. Sidewalk Demolition for Street Improvement at W. Portal, Boyle and Soto Stations	12/22/04		○				
Commence Compaction Grouting along 1st Street	12/27/04*		○				
Complete Design for Overhead Power Line Relocation at East Portal	1/9/05			○			
Commence Installation of Dewatering System at 1st/Boyle Station	1/27/05*			○			
Complete Manufacturing Tunnel Liner Molds	1/29/05			○			
Place Temporary Decking at Boyle Station	2/8/05*				○		
Complete Soldier Pile Installation at 1st/Boyle Station	2/21/05				○		
Commence Installation of Dewatering System at 1st/Soto Station	3/8/05*					○	
Commence Boyle Station Box Excavation	3/9/05*					○	
Commence Soldier Pile Installation at 1st/Soto Station	4/11/05						○

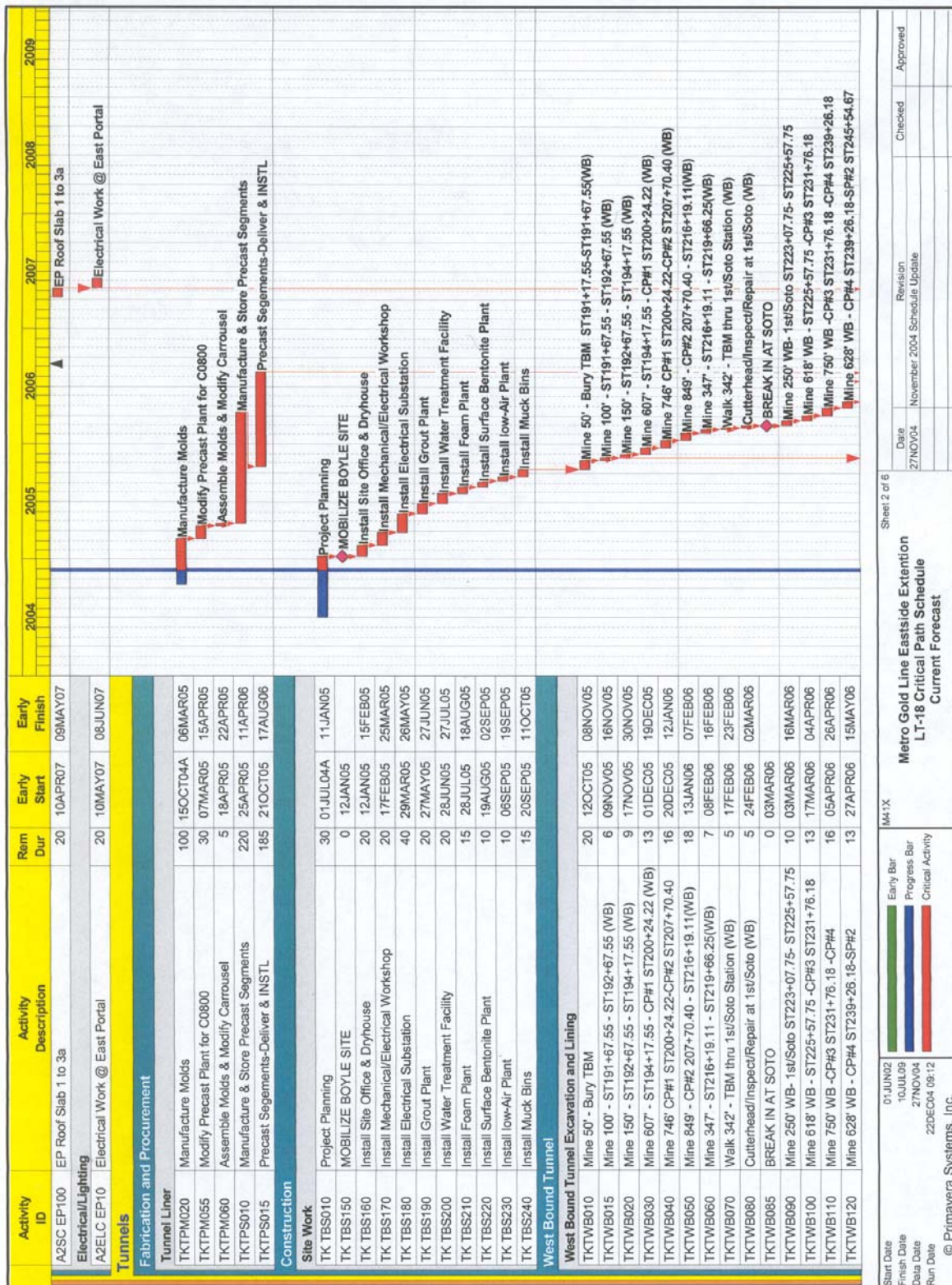
 MTA Staff Milestone	 Eastside LRT Constructors	FTA FTA Approval
 Other Agencies	* New Date	 Metro MTA Board Approval

Six-month lookahead schedule for Contract C0803 reflects the contractor's preliminary baseline CPM schedule.

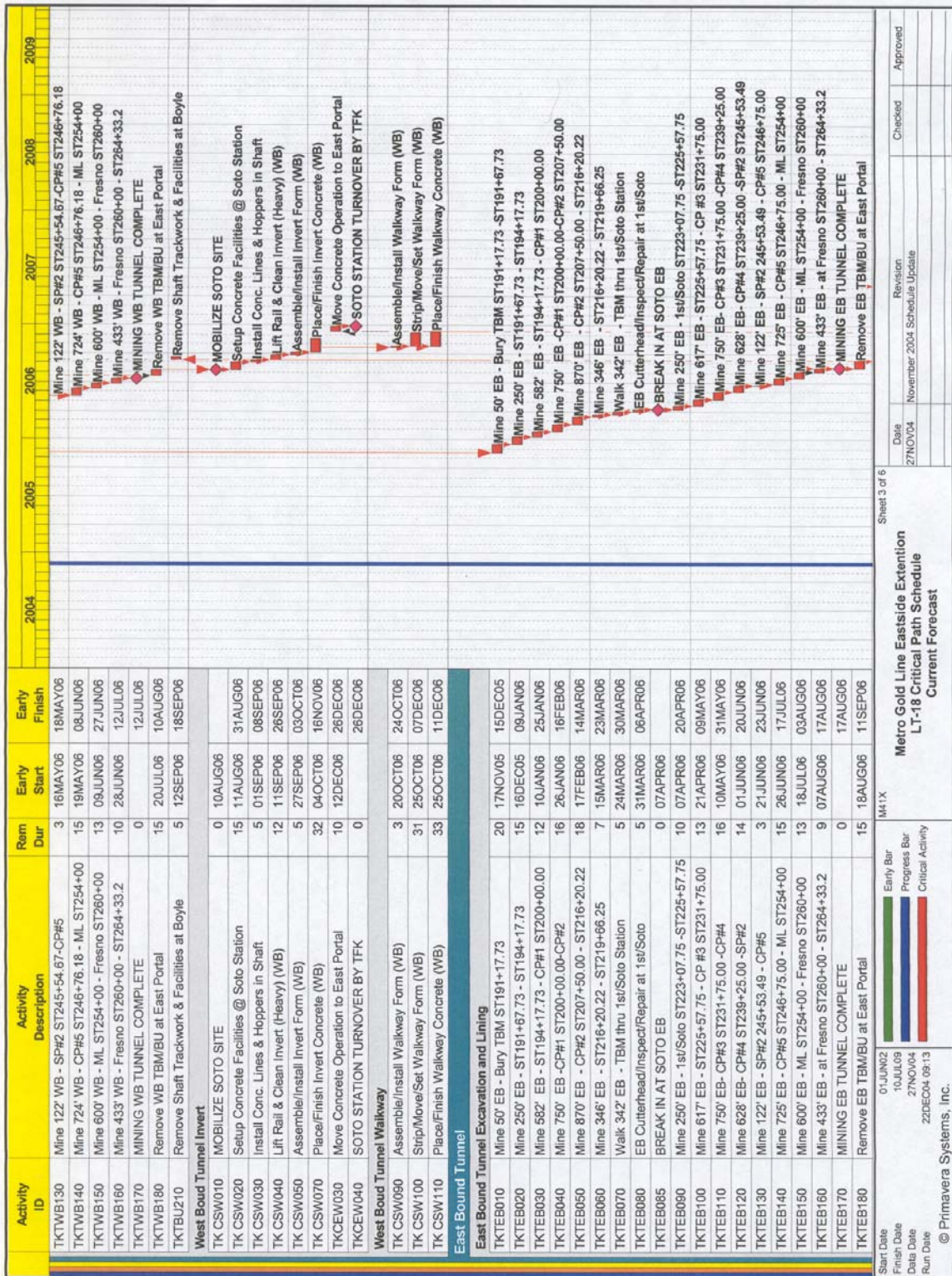
PROJECT MASTER SCHEDULE CRITICAL PATH (1 of 6)



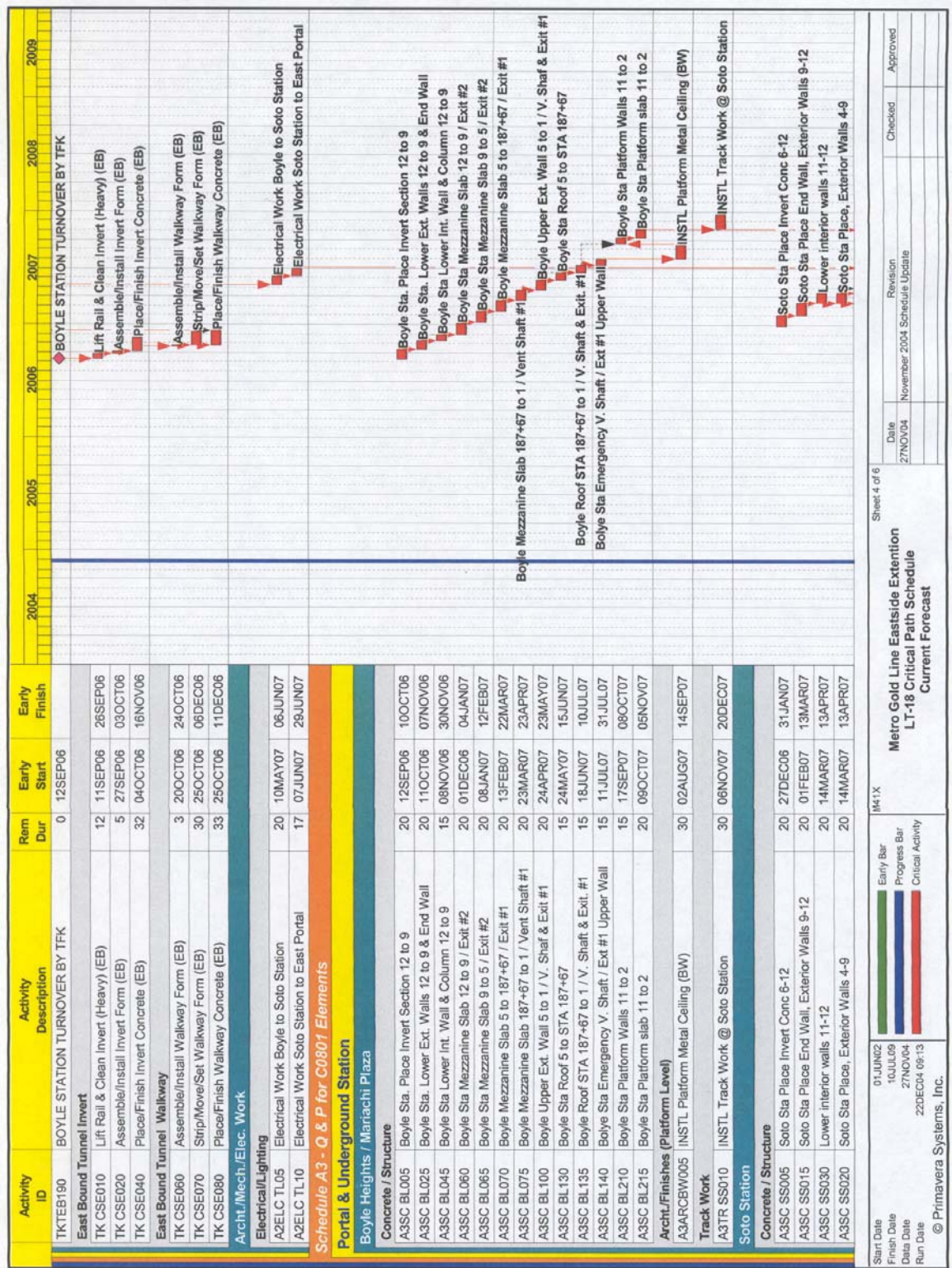
PROJECT MASTER SCHEDULE CRITICAL PATH (2 of 6)



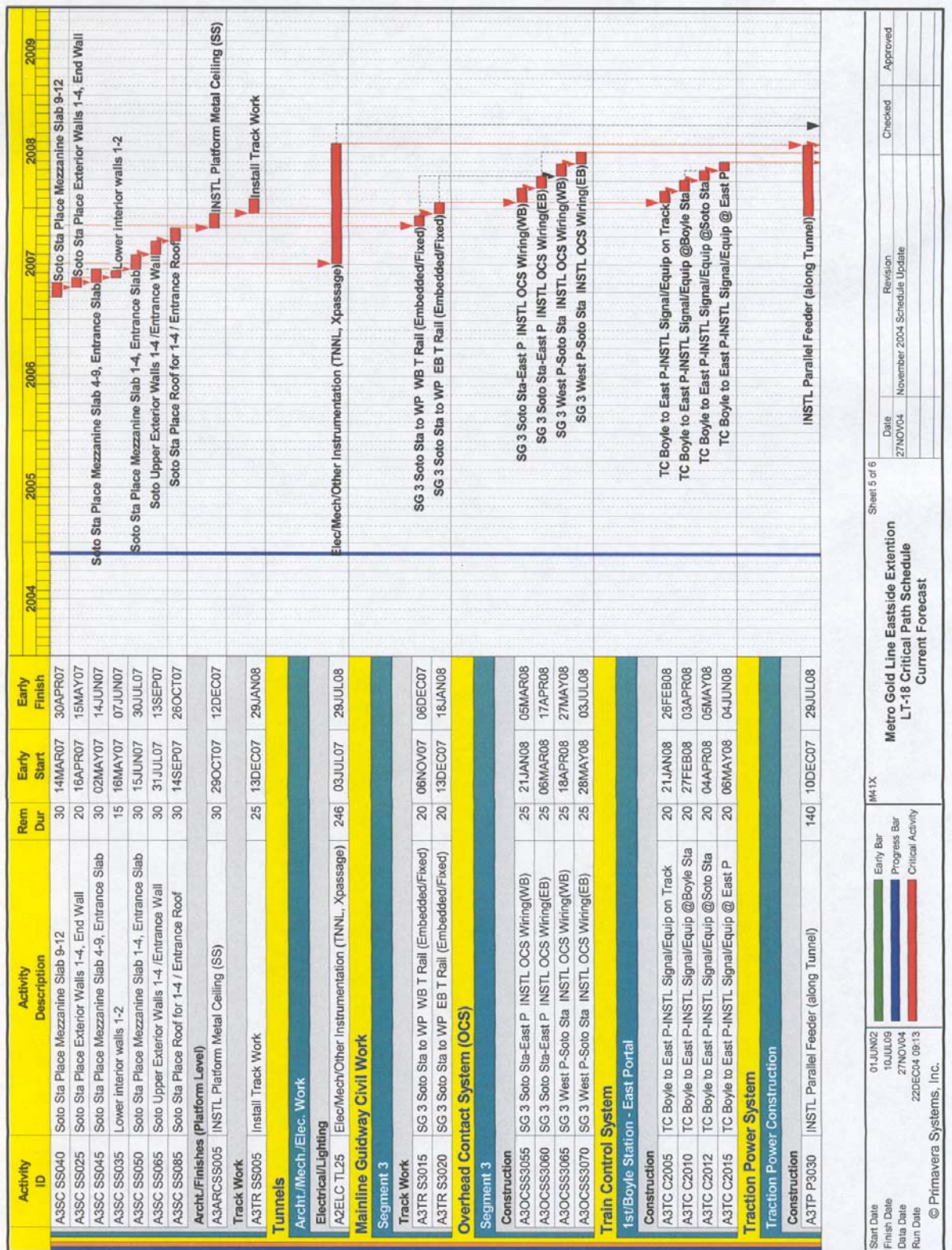
PROJECT MASTER SCHEDULE CRITICAL PATH (3 of 6)



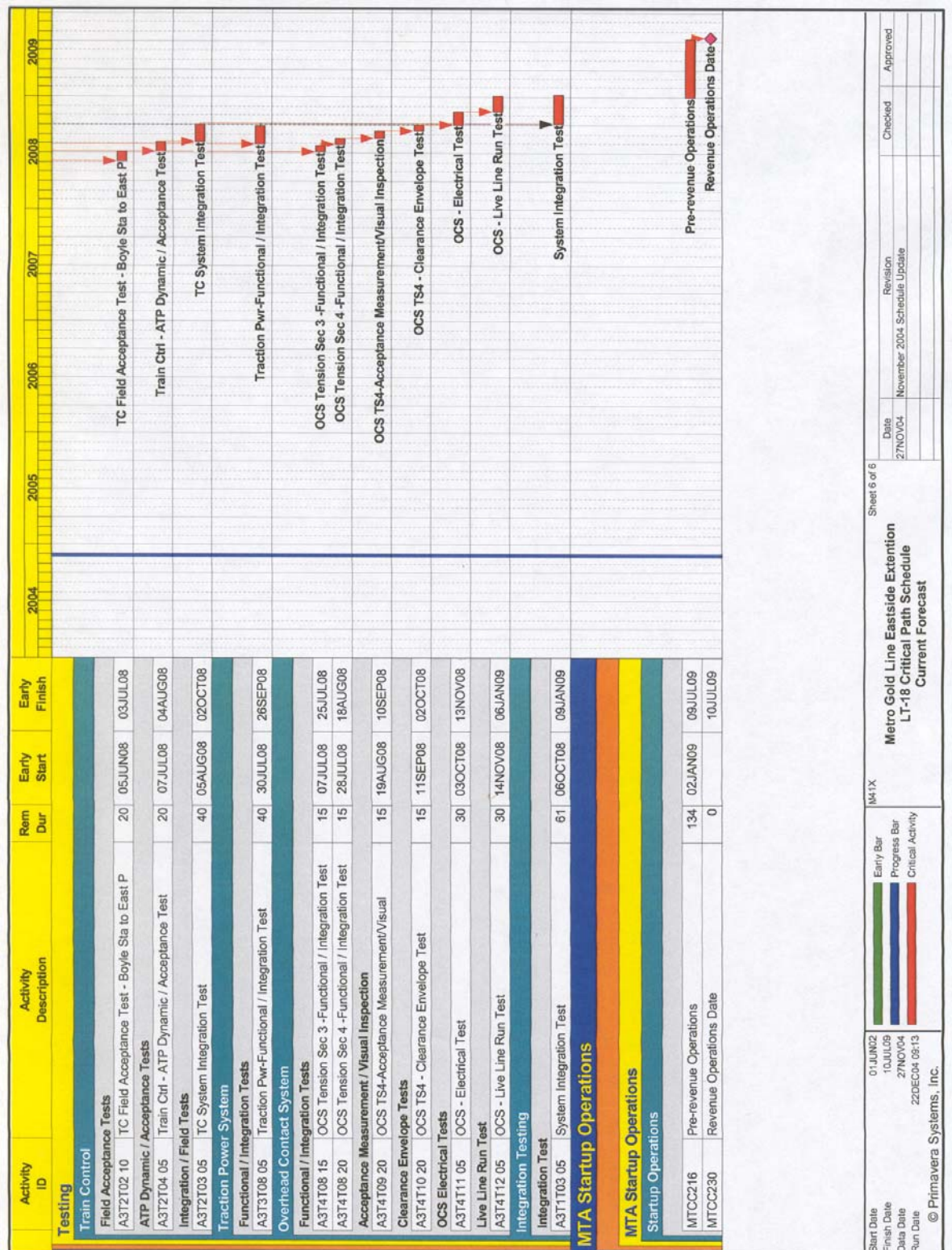
PROJECT MASTER SCHEDULE CRITICAL PATH (4 of 6)



PROJECT MASTER SCHEDULE CRITICAL PATH (5 of 6)



PROJECT MASTER SCHEDULE CRITICAL PATH (6 of 6)



CRITICAL PATH NARRATIVE

There is approximately a 13-month lead-time for the procurement and delivery of two Earth Pressure Balance Machines (EPBMs). Concurrent with the EPBM procurement, the project will proceed with submittals preparation and review, traffic control, utility relocations, ground treatments, soldier pile installation, temporary decking system installation, station box excavations, and surface and underground equipment setups for tunneling work. The Boyle Heights/Mariachi Plaza station box excavation is scheduled to complete two weeks prior to the EPBMs delivery.

The critical path continues with EPBMs assemblies, excavation of both tunnels, excavation of crosspassages, and tunnel invert and walkway construction. The critical path then follows Soto and Boyle station construction and the installations of trackwork and overhead contact system for the underground section. The systems equipment installation such as overhead contact system, train control, communication systems, and traction power and local facilities testing are the last stage of the critical path prior to entering the final test stage, where systems integration testing and pre-revenue operations are conducted.

Design

As of the end of this report period, the contractor has proceeded with the design basis, alignment design, geotechnical report, Boyle station design and civil design for the tunnel section.

Construction

Fabrication of the tunnel boring machines fabrication is underway. The tunnel liner molds manufacturing is anticipated to finish by February 2005. As of the end of this report period, power switchgear, shaft cranes, shaft elevator, muck bins, grout plant, surface bentonite plant, foam solution plant, and seven locomotives have been ordered.

Wet utility relocations continued at Boyle and West Portal areas. Wet utility relocations at Soto are scheduled to begin in early December. Soldier piles for underground station box excavations are being delivered to staging areas. The pile installation crane has been mobilized to the site and the test pile installation at Boyle has been scheduled for early December 2004. The soldier pile installation at Boyle is anticipated to finish by the end of February 2005. The signal light relocations and the installation of temporary streetlights will be arranged during the soldier pile installation. The pre-grouting injection holes were completed in late November 2004 and the compaction grouting is anticipated to begin in late December.

PROJECT COST STATUS

COST REPORT BY ELEMENT

DOLLARS IN THOUSANDS

ELEM- MENT	DESCRIPTION	ORIGINAL BUDGET	CURRENT BUDGET		COMMITMENTS		EXPENDITURES		CURRENT FORECAST		BUDGET / FORECAST VARIANCE
			PERIOD	TO DATE	PERIOD	TO DATE	PERIOD	TO DATE	PERIOD	TO DATE	
C	CONSTRUCTION	633,221	-	633,221	-	632,554	18,032	90,422	-	662,391	29,169
S	SPECIAL CONDITIONS	19,494	-	19,494	55	14,674	97	4,743	-	20,329	836
R	RIGHT-OF-WAY	40,358	-	40,358	-	40,711	33	32,117	-	41,742	1,384
P	PROFESSIONAL SERVICES	135,304	-	135,304	-	79,883	1,151	65,087	-	135,936	632
PC	PROJECT CONTINGENCY	60,254	-	60,254	-	-	-	-	-	28,249	(32,005)
PR	PROJECT REVENUE	(4,617)	-	(4,617)	-	-	-	(16)	-	(4,633)	(16)
SUBTOTAL		884,014	-	884,014	55	767,821	19,313	192,353	-	884,014	-
PF	PROJECT FINANCE COST	14,800	-	14,800	-	-	-	-	-	14,800	-
TOTAL		898,814	-	898,814	55	767,821	19,313	192,353	-	898,814	-

NOTE: EXPENDITURES ARE CUMULATIVE THROUGH OCTOBER 2004

PROJECT COST ANALYSIS

Original Budget and Current Budget

The Original Budget and Current Budget remained the same this period. The Full Funding Grant Agreement (FFGA) was adopted June 1, 2004 in the amount of \$898.8 million. The Original and Current Budgets reflect the adopted FFGA.

Current Forecast

The total project forecast remains the same at \$898.8 million.

Commitments

The Commitments increased by \$0.1 million this period due to executed modifications. The \$767.8 million in Commitments to date represents 85.4% of the Original Budget.

Expenditures

Expenditures are cumulative through October 2004. The Expenditures increased by \$19.3 million this period primarily due to construction costs associated to Contract C0803 – Tunnel, Stations, Trackwork, and Systems. The \$192.4 million in Expenditures to date represents 21.4% of the Original Budget.

FINANCIAL/GRANT STATUS

in \$ millions

SOURCE	(A) ORIGINAL BUDGET	(B) TOTAL FUNDS ANTICIPATED (1)	(C) TOTAL FUNDS AVAILABLE	(D) COMMITMENTS \$	(D/B) %	(E) EXPENDITURES \$	(E/B) %	(F) BILLED to FUNDING SOURCE \$	(F/B) %
FEDERAL - SECTION 5309 NEW START	490.7	490.7	17.3	418.0	85%	17.3	4%	17.3	4%
FED - SECTION 5309 FIXED GUIDEWAY	23.1	23.1			0%		0%		0%
FEDERAL - CMAQ	10.3	10.3			0%		0%		0%
REGIONAL IMPROVMT PROG-FED	179.6	179.6	4.6	179.6	100%	4.6	3%	4.6	3%
REGIONAL IMPROVM PROG-STATE	0.6	0.6	0.6	0.6	100%	0.6	100%	0.6	100%
STATE TCRP	45.0	45.0	45.0	45.0	100%	45.0	100%	45.0	100%
PROP A 35% / PROP C 40% BONDS	124.6	124.6	116.0	124.6	100%	77.7	62%	77.7	62%
LEASE REVENUES	10.1	10.1			0%		0%		0%
UNBILLED ACCRUALS						47.2			
SUB-TOTAL	884.0	884.0	183.5	767.8	87%	192.4	22%	145.1	16%
PROP A/PROP C (INTEREST COST)	14.8	14.8	0.0	0.0	0%	0.0	0%	0.0	0%
TOTAL	898.8	898.8	183.5	767.8	85%	192.4	21%	145.1	16%

(1) Based on August 03 Adopted Short Range Transportation Plan (includes interest cost)
 NOTE: EXPENDITURES ARE CUMULATIVE THROUGH OCTOBER 2004.

STATUS OF FUNDS ANTICIPATED

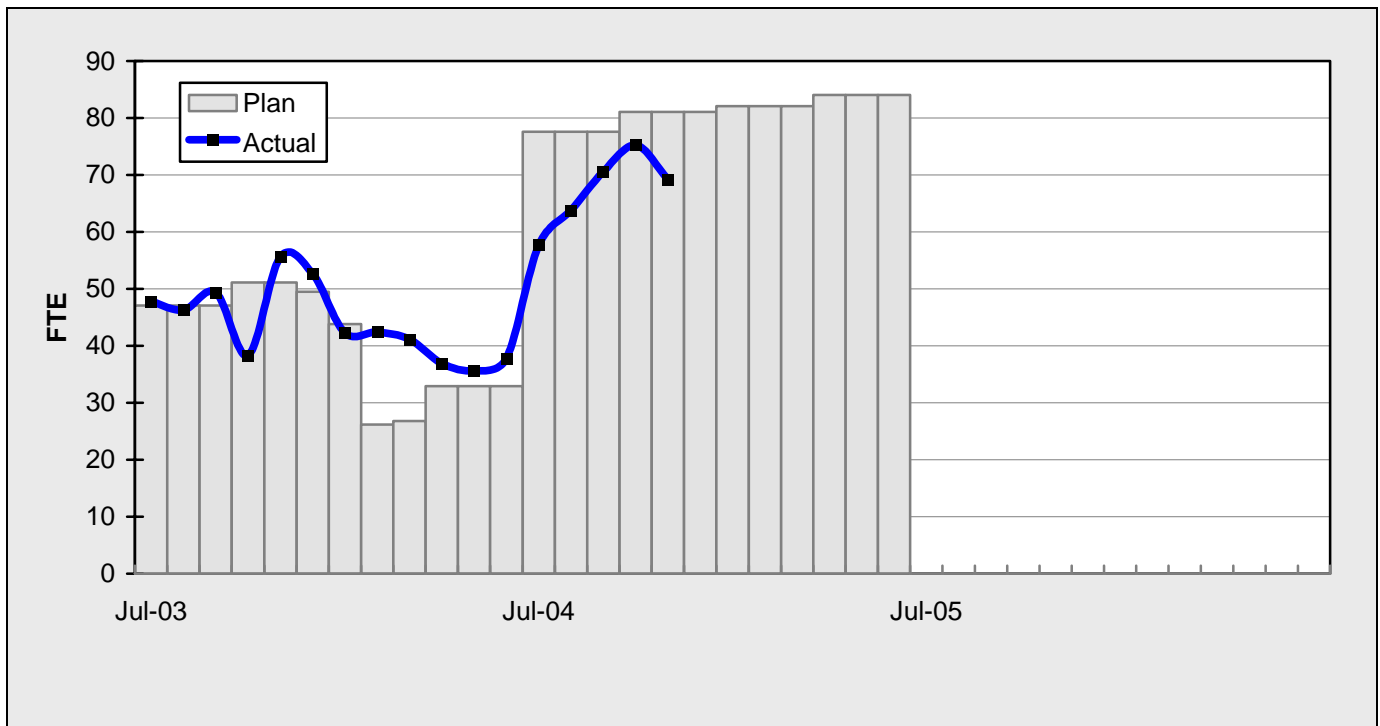
FEDERAL SECTION 5309: MTA submitted a grant amendment application CA-03-0508-04 for \$3,934,330 on April 18, 2003. Funds are available for draw down as of June 2003. On June 1, 2004, the FTA approved the Full Funding Grant Agreement for \$490.7 million of New Starts Funds.

STATE TCRP: On April 3, 2003 the California Transportation Commission approved MTA's request to amend the STIP to convert \$191 million of unallocated TCRP funds to STIP funds.

On August 25, 2003, MTA submitted a request for AB1335 Letter of No Prejudice (LONP) authority for Phase 4 construction activities. The LONP approval request has been deferred indefinitely by the CTC.

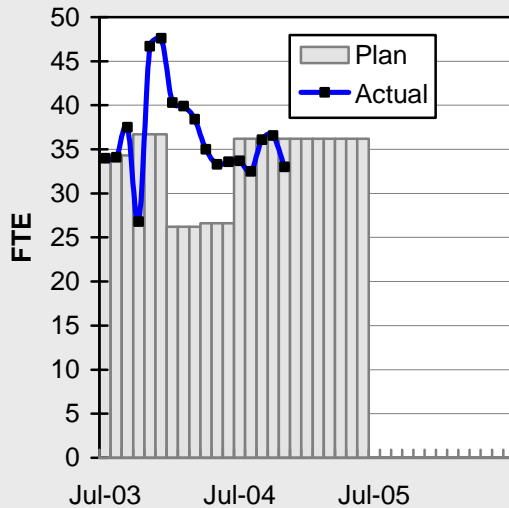
STAFFING STATUS

TOTAL PROJECT STAFFING

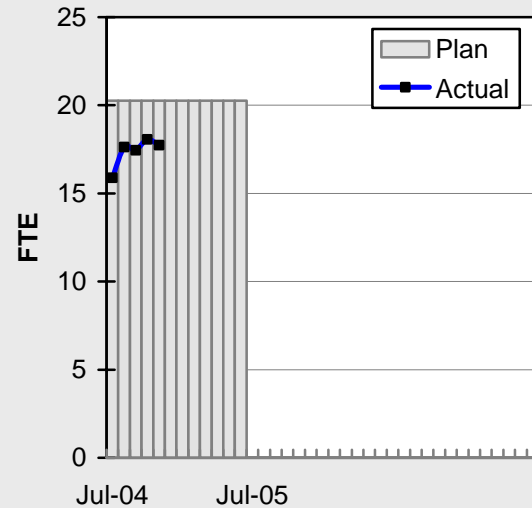


STAFFING STATUS

DIRECT AGENCY STAFFING

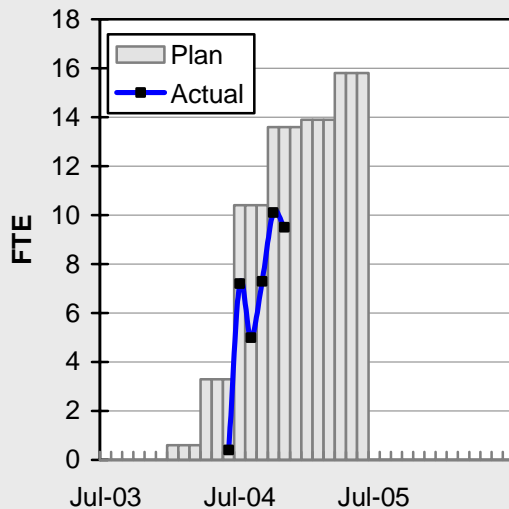


INDIRECT AGENCY STAFFING

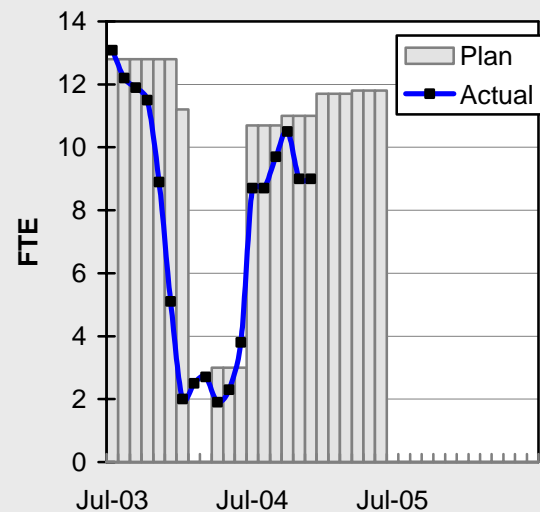


* For fiscal year 2005, indirect staffing levels are no longer part of overhead costs.

CONSTRUCTION MANAGEMENT



ELRT PARTNERS



REAL ESTATE STATUS

- For C0803, the tunnel portion of the alignment, 41 parcels are required for acquisition (10 full takes, 16 sub-surface easements, 8 part takes, 5 sub-surface easements/building protection, and 2 building protections).
- For C0803, the at-grade portion of the alignment, 25 parcels are required for acquisition (18 full takes and 7 partial takes). Nine parcels have been identified for the proposed Ramona High School site reconfiguration.
- For C0802, 3 parcels are required (2 surface easements and 1 full take parcel).
- Sixty-seven parcels have been certified, 40 for C0803-Tunnel, 25 for C0803-At-Grade and 2 for C0802. Offers have been made to 57 property owners. A total of 45 parcels have been acquired (30 under C0803-Tunnel, 13 under C0803-At-Grade, and 2 under C0802). Real Estate is in negotiations with the other property owners.
- Third Party Administration has obtained two Encroachment Permits from Caltrans for C0803-Tunnel. All three (3) street closures have been obtained from the City of LA.

REAL ESTATE ACQUISITION SCHEDULE SUMMARY

<i>Number of Parcels</i>	Required	Acquired	On Schedule	Behind Schedule	
				Number	Avg. Calendar Days
This Period	69	45	24	0	0
Last Period	69	45	24	0	0

**REAL ESTATE STATUS TO DATE BY CONTRACT
ACQUISITION PHASE**

CONTRACT NO.	Number of Parcels (A+B+C+D+E)	Agreements Signed (A)	Parcels in Condemnation (B)	Under Negotiation (C)	In Appraisal Process (D)	Inactive Parcels (E)	Parcels Available
C0803-Tunnel	41	29	0	12	0	0	30
C0803-At-Grade	25	14	0	1	9 *	1**	13
C0802	3	2	0	1	0	0	2
TOTAL	69	45	0	14	9	1	45
LAST PERIOD	69	45	0	14	9	1	45

* Alma parcels for LAUSD Ramona High School; pending completion of CEQA process (need date 6/1/05)

** Parcel ES-604 Ramona High School (portion to be acquired)

ENVIRONMENTAL STATUS

- Initiated renewal of SCAQMD Rule 1166.
- Continued asbestos and lead-paint abatement.
- VSA and Associates was chosen as the Noise and Vibration Consultant for Washington Group/Shimmick Obayashi JV.
- Revised the Cultural Resources Monitoring and Mitigation Plan for submittal to the SHPO.
- Reviewed the Archeological and Paleontological Training Program.

COMMUNITY RELATIONS STATUS

- Provided construction update at the Review Advisory Committee Meeting.
- Provided briefing on soldier pile operation to elected officials and community stakeholders.
- Distributed construction notices to the community and elected officials.
- Promoted Metro Gold Line Eastside Project at two community events.

QUALITY ASSURANCE STATUS

- Participated in a field visit to the tunnel ring segment manufacturer in Palmdale.
- Performed a surveillance of current field activities.
- Monitored Water Distribution System installations and soil sampling by the grouting subcontractor.
- Participated in a preliminary field review of pre-cast decking panels at the Kiewitt yard in Rialto.

SAFETY STATUS

- Participated in weekly progress meetings with Construction Management and ELRTC personnel to discuss safety related issues and construction schedule.
- Participated in Readiness Review and Contractor Submittal Review Meetings.
- Participated in Contractor Safety Orientation and Tool Box Safety meetings.
- Participated in Partnering Review workshop with Construction Management and ELRTC personnel.
- Reviewed safety audit policies and procedures with ELRTC Management.
- Monitored construction and traffic control activities on a daily basis to ensure safety compliance.

THIRD PARTY AGREEMENT STATUS

Third Party	Type of Agreement	Forecast Execution Date	Required Need Date	Status/ Comments
City of Los Angeles	Amendment	Complete	N/A	Fully executed on 12/23/02.
Los Angeles County	Master	Complete	N/A	Execution completed 4/1/03.
Caltrans (All Projects)	Master	Complete	N/A	MTA execution completed 5/7/03. Caltrans full execution occurred in July 2003.
Caltrans (101)	Design	Complete	N/A	MTA execution completed 5/7/03. Caltrans full execution occurred in July 2003.
Caltrans (101)	Construction	Complete	N/A	MTA execution completed 6/16/03. Caltrans full execution occurred in September 2003.
Caltrans (101)	Maintenance	5/05	Project Completion	Initial negotiation meeting on 1/9/03 resulted in MTA's recommendation to use the existing agreement with a similar San Diego system. The San Diego agreement was forwarded to MTA on 1/29/03. MTA received a draft from Caltrans on 4/10/03. Agreement was returned to Caltrans on 4/22/03 with comments. After a negotiation meeting on 7/29/03, a draft agreement by Caltrans was received on 1/22/04. MTA sent back to Caltrans on 2/10/04 but no response has been received.
LADWP (Water)	Amendment	12/04	*6/04	Negotiation meetings were held on 3/8, 3/12, 4/8, 4/9 and 5/11/04 and completed review and necessary changes to the draft agreement but DWP could not agree to the "Deadlines and Delays" language. MTA continued seeking DWP's acceptance of "Deadlines and Delays" language and had a meeting with LA County Counsel on 5/24/04. LA County Counsel contacted the LA City Attorney on 6/3/04. The attorney discussed with DWP staff and all areas are basically agreed upon. MTA will make modifications to the Deadline and Delay languages that indicates DWP is the sole cause of the delays. DWP has come back with exception to this Deadline and Delay section. MTA management was asked on 7/30/04 to review the document without deadlines and delays, but with other concession by DWP. MTA management advised staff that it is necessary. MTA management is in discussions with Board members for assistance.

THIRD PARTY AGREEMENT STATUS (Continued)

Third Party	Type of Agreement	Forecast Execution Date	Required Need Date	Status/ Comments
LADWP (Power)	Amendment	1/05	*6/04	Negotiation meetings were held on 3/8, 3/12, 4/8, 4/9 and 5/11/04 and completed review and necessary changes to the draft agreement but DWP could not agree to the "Deadlines and Delays" language. MTA continued seeking DWP's acceptance of "Deadlines and Delays" language and had a meeting with LA County Counsel on 5/24/04. LA County Counsel contacted the LA City Attorney on 6/3/04. The LA City attorney discussed the proposed language with DWP staff and informed them that the language was legally acceptable. However, DWP staff still had an exception to the Deadline and Delay section with regard to DWP's cost responsibilities if they were the sole cause of the delays. MTA management was asked on 7/30/04 to review the document without deadlines and delays, but with other concession by DWP. MTA management advised staff that it is necessary. MTA management is in discussions with Board members for assistance.
So. Cal. Edison Co.	Amendment	1/05	*6/04	The proposed agreement was not acceptable to SCE. A sense of urgency was instilled to SCE in 3/17/04 meeting. A revised draft amendment was agreed upon in 4/12/04 meeting and was forwarded to SCE on 4/15/04 for signature. SCE was still unwilling to sign agreement. A meeting was scheduled for early July 2004 but SCE cancelled. SCE management has agreed to give a redraft of the agreement to MTA in December 2004 so negotiation can continue.

THIRD PARTY AGREEMENT STATUS (Continued)

Third Party	Type of Agreement	Forecast Execution Date	Required Need Date	Status/ Comments
The Gas Company	Amendment	12/04	*6/04	A redraft prepared by the Gas Co. was reviewed by MTA on 4/9/04 and a revised document was sent to the Gas Co. on 4/19/04 for final review and execution. Another draft, prepared by the County Counsel on 4/29/04, was sent to the Gas Co. for execution. No response since then. Voice message was left on 5/18/04 and document was e-mailed again to them on 5/21/04. MTA is seeking Gas Company acceptance of "Deadlines and Delays" language. Gas Co. has sent the final amendment to MTA for review. Upon Legal review questions arose on Conditional Design and negotiations held 9/2/04 allowed for agreement. Gas Co. will make the necessary changes by 9/9/04 and return for final review. All changes accepted and will execute by mid-December 2004.
SBC	Amendment	12/04	*6/04	A redraft was sent 2/19/04 and was agreed upon in 3/26/04 meeting with an exception of the use of D/B in the agreement. MTA reviewed and completed necessary changes on 4/9/04 and forwarded the revised document to SBC on 4/22/04 for final review and execution. SBC was on strike 5/21 – 24/04, and has caused an impact to its execution. Telephone conversation on 5/25/04 expressed that MTA is seeking SBC acceptance of "Deadlines and Delays" language. SBC insists that they should be able to stop work at any time. Alternative language to this was sent on 6/26/04, which has been agreed upon. The final draft from SBC omitted conditional design submittals and alternatives language is being submitted. Negotiations on 9/2/04 led to agreement and the final document has been revised by SBC and received by MTA. Documents will be cleaned up and sent to SBC for execution in October. Execution is underway at SBC.
Adelphia Cable Company	Amendment	12/04	*6/04	Received a marked up draft 7/19/04, with minor changes. Legal completed review and sent to Adelphia for execution. Still under review by Adelphia.

THIRD PARTY AGREEMENT STATUS (Continued)

Third Party	Type of Agreement	Forecast Execution Date	Required Need Date	Status/ Comments
California Water Service Company	Master	12/04	*6/04	Cal Water could not agree with the use of D/B in the agreement. MTA responded in a letter that they are responsible to MTA. A draft was sent to Cal Water on 3/15/04. Received minor comments on 4/22/04 and forwarded it to legal for review. Revisions were sent to Cal Water 6/26/04 following discussions. Changes accepted and sent to Cal Water for execution, which is underway.
L.A.County Sanitation Districts	N/A	Complete	3/04	Sanitation District letter dated 3/26/03 stated no need for an agreement since there are no relocations necessarily related to their facilities. They will review the submittals related to encasement for their facility on Indiana Street.
MCI Worldcom	Amendment	Completed by MCI, waiting for MTA Board action	*6/04	An amendment to the previous agreement was produced, discussed and agreed upon on most items. MTA completed the review and necessary changes in response to additions and changes made by MCI and sent a revised document to MCI and sent a revised document to MCI on 4/19/04 for final review and execution. The insurance language was completed by Risk Management on 5/7/04 and reviewed by Mr. Safer on 5/24/04 and was forwarded to MCI on 5/25/04 for review. MTA is seeking MCI acceptance of "Deadlines and Delays" language. MCI would not agree to the Deadlines and Delay language but all other items were agreed upon during a conference call on 6/3/04. MCI completed the changes agreed upon and the revised document was sent to MTA 6/5/04 for final review. MCI executed on 7/20/04. MTA execution is waiting on Board action.
Metropolitan Water District	Amendment	Complete	3/04	1/7/03 meeting resulted in using the existing agreement. A letter was sent to MWD on 4/1/03 for their concurrence. Concurrence was executed by MWD on 4/21/03 and received on 5/12/03.

THIRD PARTY AGREEMENT STATUS (Continued)

Third Party	Type of Agreement	Forecast Execution Date	Required Need Date	Status/ Comments
Verizon Wireless	Amendment	1/05	*6/04	The revised draft amendment was hand delivered to Verizon on 11/19/03 and an electronic copy was sent to them 2/19/04. Verizon responded 5/26/04. A meeting to discuss a path forward was scheduled for early July but was cancelled later due to layoffs and changes in staff. Discussions with staff resumed and partial comments were received in late September. The remainder is expected to arrive by late December 2004.
AT&T Local Services	Amendment	1/05	*6/04	Legal has reviewed the document and has suggested some changes. They were sent the previous agreement on 9/2/04 to allow AT&T to complete comments. Spoke with their legal 11/18/04 and he is expected to talk with MTA legal in December 2004.
GST	N/A			Facilities are not impacted by Eastside Construction
Exxon Mobil Oil Company	N/A			Facilities are not impacted by Eastside Construction
Pacific Pipeline Company	N/A			Facilities are not impacted by Eastside Construction
Kinder Morgan Pipeline Company	N/A			Facilities are not impacted by Eastside Construction
Tosco Refining Company	N/A			Facilities are not impacted by Eastside Construction
Equilon Pipeline Company	N/A			Facilities are not impacted by Eastside Construction
Level 3 Communications	N/A			Facilities are not impacted by Eastside Construction
Broadwing Communications	N/A			Facilities are not impacted by Eastside Construction
Eller Media	N/A			Facilities are not impacted by Eastside Construction
Qwest-SP Telecom	N/A			Facilities are now impacted by the Yard expansion and a letter agreement is being drafted.

* Work under the current MCA and will not delay ongoing work.

CPUC CROSSING SUMMARY

Batch	Application Status	Initial Package Submittal to MTA	Field Diagnostic Meeting	Revised Drawings Due to MTA	Draft Write-up to MTA	Draft Package Submittal to PUC Local office and Agencies	Final Package Submittal to PUC	CPUC Final Approval
1	Complete	8/5/02	8/12/02	8/26/02	9/6/02	9/6/02	9/6/2002	Approved
2	Complete	10/4/02	10/11/02	10/25/02	11/6/02	11/22/02	11/22/2002	Approved
3	Complete	2/6/03	2/27/03	3/10/03	1/27/03	4/11/02	4/18/2003	Approved
4	Complete	12/14/02	1/15/03	1/29/03	11/13/02	5/5/03	6/18/2003	Approved
4A	Complete	1/24/03	1/29/03	3/14/03	2/7/03	9/5/03	1/23/2004	
6	Complete	3/19/03	3/26/03	6/20/03	2/7/03	9/5/03	9/12/2003	Approved
7	Complete	12/11/02	12/18/02	3/31/03	2/7/03	5/5/03	7/25/2003	Approved
8	Complete	11/26/02	12/18/02	3/31/03	11/15/02	6/6/03	5/21/2004	
9	Complete	1/20/03	1/29/03	3/31/03	11/22/02	8/29/03	9/12/2003	Approved
10	Complete	12/11/03	12/18/02	3/10/03	11/22/02	5/5/03	8/29/2003	Approved
11	Complete	2/13/03	2/27/03	4/18/03	12/6/02	6/6/03	8/29/2003	Approved
12	Complete	2/13/03	2/27/03	4/18/03	12/13/02	6/6/03	9/5/2003	Approved
13	Complete	2/6/03	2/20/03	4/18/03	2/21/03	6/6/03	9/1/2004	
14	Complete	1/8/03	1/15/03	3/14/03	11/12/02	8/29/03	10/30/2003	Approved
15	Complete	2/26/03	N/A	N/A	2/21/03	6/6/03	8/29/2003	Approved
16	Complete	2/26/03	N/A	N/A	2/28/03	6/6/03	8/29/2003	Approved
17	Complete	1/8/03	1/15/03	N/A	2/14/03	5/5/03	6/13/2003	Approved
18	Complete	1/8/03	1/15/03	3/20/03	2/14/03	5/5/03	6/13/2003	Approved
Agency Responsible		ELRTP	MTA	ELRP	ELRTP	MTA	MTA	

Batch No. 5 has been removed, as the Midway Yard will be utilized.

SHADED AREAS REPRESENTS COMPLETION

30 applications approved. Final 11 applications under review of which 6 are grade separated crossing applications.

Batch Descriptions	
1	1st / Alameda
2	Alameda / Temple 1st / Hewitt Ped Crossings @ 1st / Alameda Station
3	1st / Vignes
4	1st / Lorena
4A	Indiana/1st Indiana/3rd Indiana Pedestrian Crossing
6	1st / Mission 1st / Anderson 1st / Clarence 1st / Utah 1st/Gless Pedestrian Crossing
7	3rd / Rowan
8	3rd / Gage 3rd / 60 Fwy WB Ramps 3rd /Downey
9	3rd / Marianna 3rd / Eastern
10	3rd / Ford 3rd / McDonnell 3rd / Arizona
11	3rd / Mednik 3rd / Civic Center Drive 3rd / La Verne
12	3rd / Driveways to Sheriff's Station 3rd / Wood / Via Corona / Pomona / Beverly
13	3rd / 60 Fwy WB Connector 3rd / 60 Fwy over ELRT 3rd / 710 Fwy SW Connector 3rd / Bridge over 710 Fwy 3rd / 710 Fwy SE Connector
14	Union Station Service Road
15	1st / Santa Fe 1st / Myers
16	1st / MTA 1st / BNSF 1st / Union Pacific
17	US 101 Fwy Overcrossing
18	Commercial Street Overcrossing

Metro Gold Line Eastside Extension Monthly Project Status Report

November 2004

I. CONTRACT C0803 STATUS

Description: Metro Gold Line Eastside Extension Contractor: Eastside LRT Constructors		Contract No. C0803 Project: 800088 Status as of: November 27, 2004					
Progress/Work Completed: <ul style="list-style-type: none"> * Completed lead/asbestos abatement at Boyle and Soto station sites * Commenced procurements of muck bins, grout plant, shaft elevator * Mobilized crane to Boyle site for soldier pile installation * Complete soldier piles delivery for Boyle Station * Complete pre-grouting injection holes * Approved Baseline CPM Contract Schedule * Turned over Union Station tail track area to Caltrans for US-101 Freeway overcrossing construction 		Major Activities (In Progress): <ul style="list-style-type: none"> * Tunnel boring machines manufacturing * Tunnel liner molds manufacturing * Soldier piles delivery for Soto Station * Utility relocations at Boyle station and West Portal * 30 Hour OSHA Safety Training 					
Areas of Concern: None		Major Activities Next Period: <ul style="list-style-type: none"> * Continue fabrication of two tunnel boring machines * Continue manufacturing of tunnel liner molds * Commence soldier pile installation at Boyle station * Commence compaction grouting * Continue utility relocations at Boyle, West Portal, and Soto * Continue 30 Hour OSHA Safety Training * Complete demolition at Soto site 					
Schedule Summary:			Original Contract Dates	Time Extension	Current Contract	Forecast	Variance CDs
Date of Award:	06/01/04	Notice to Proceed	07/01/04	0	07/01/04	07/01/04	0
Notice to Proceed:	07/01/04	Milestone 1 - Contract Completion. Complete all systems integration testing and ready for MTA's pre-revenue operation testing.	12/31/08	0	12/31/08	12/31/08	0
Original Contract Duration:	1795 CD	Milestone 3 - Complete Universal Fare System Equipment area.	04/30/08	0	04/30/08	04/30/08	0
Current Contract Duration:	1795 CD	Milestone 5 - Vacate all staging areas and turn over to MTA.	05/30/09	0	05/30/09	05/30/09	0
Elapsed Time from NTP:	149 CD	Milestone 6 - Complete design and construction of Option D work.	09/28/04	0	09/28/04	09/28/04	0
Option D Contract duration	90 CD	Complete					
Physical Percent Complete: Physical completion * as of this reporting period is: 4.41% * Note: Physical completion assessment reflects work completed and invoice amount.		Cost Summary: \$ In millions 1. Award Value: 600.45 2. Executed Modifications: 0.16 3. Approved Change Orders: 0.00 4. Current Contract Value (1+2+3): 600.61 5. Incurred Cost: 107.10					

CONTRACT P2550 STATUS

Description: 2550 Rail Vehicle Program Contractor: AnsaldoBreda, Italy		Contract No. P2550 Project: 800151 Status as of: November 30, 2004					
Progress/Work Completed: 1. The IPT conducts on-going weekly conference calls with project staff in Los Angeles, New York, Pistoia, and Naples Italy. The teleconferences discuss the status of Contract submittals, reviews and approvals, specific design issues and planned activities for the week. 2. The IPT drafted the four-month look-ahead schedule for upcoming First Article Inspections, and travel to support these program management efforts. 3. The IPT and AnsaldoBreda started conducting the last First Article Inspections other than the assembled vehicle during the months of November. Areas of Concern: 1. Documentation submittals are close to complete. However, several submittals continue lagging behind the contract schedule. AnsaldoBreda is making an effort to "catch-up" through the efforts of their documentation consultant 2. Both Milestones 5A, Approval of all design dwgs, and 6A, Approval of Cab Mock-up, are not yet complete nor officially approved.		Major Activities (In Progress): Contractor is in process of completing the Milestone 5A & 6A work. 96% of this work is completed However, since these milestones cannot yet be approved, AnsaldoBreda has not yet invoiced for this work. Contractor continues work on Milestones 7A and 8A. MTA Management Team is presently visiting Breda's Italian facility to assess engineering work progress and review program schedule. Major Activities Next Period: 1. Activities will revolve around scheduling and conducting the remaining First Articles Inspections and previous First Article follow-up. 2. The IPT and AnsaldoBreda will continue conducting the last First Article Inspections other than the assembled vehicle during the next months of, December, and January. 3. During this period the IPT will continue closely monitoring and expediting where necessary for all scheduled activities involved in constructing and supporting the 2550 rail vehicle. 4. Weekly teleconference meetings will reconvene to monitor technical design completion for the 2550 rail vehicles.					
Schedule Summary: Date of Award: 04/24/03 Notice to Proceed: 06/06/03 Original Contract Duration: 1460 CD Current Contract Duration: 1460 CD Elapsed Time from NTP: 543 CD Option 1 & 2 Contract duration 1460 CD** ** after starting options 1 & 2 Note: MTA is in the process of completing Contract Modification #1, reducing Current Contract Value to reflect the recently granted California Exemption for State Sales Tax.			Original Contract Dates	Time Extension	Current Contract	Forecast	Variance CDs
		Notice to Proceed	06/06/03	0	6/06/03A	6/06/03A	0
		Milestone 1A -	08/08/03	0	12/08/03	10/15/03A	0
		Milestone 2A -	09/05/03	0	11/20/03	12/30/03A	0
		Milestone 3A -	11/07/03	0	01/20/04	12/30/03A	0
		Milestone 4A -	01/02/04	0	01/31/04	3/31/04A	0
		Milestone 5A - Appr.dwgs, per Sect.1.13.1Tech Specs	05/07/04	0	05/07/04	12/31/04	220
		Milestone 6A - Appr.of Operator Cab Mockup	06/04/04	0	06/04/04	12/31/04	192
		Milestone 7A - Appr.Carbody stress analysis & C.T. report	11/05/04	0	11/05/04	12/31/04	55
		Milestone 8A - Appr.of Traction Motors Perf. Tests	11/05/04	0	11/05/04	12/31/04	55
		Milestone 14A - Acceptance of two First Article Vehicles	12/02/05	0	12/02/05	12/02/05	0
Physical Percent Complete: Physical completion * as of November 2004 is 32%. * Note: Physical completion assessment reflects work completed and invoiced plus current work in progress.		Cost Summary: \$ In millions 1. Award Value: 158.74 (Metro Gold Line Eastside Ext Only: 31.75) 2. Executed Modifications: 0.00 3. Approved Change Orders: 0.00 4. Current Contract Value (1 + 2 + 3): 158.74 5. Pending Changes: 0.00 6. Incurred Cost: 34.69					

CONSTRUCTION PHOTOGRAPHS



Repair of 1st Street after relocation of 12" water line.



Placement of 18" storm drainage line at 1st and Boyle Avenue.

CONSTRUCTION PHOTOGRAPHS



Testing being performed by Traylor Brothers/Hayward Baker.



Concrete street decking panels in storage.

APPENDIX

COST AND BUDGET TERMINOLOGY

ESTIMATED PROJECT COSTS: Estimated project costs are based upon the current project cost estimates that are produced during the engineering design phase.

COMMITMENTS: The total of actual contract awards, executed change orders or amendments, approved work orders of Master Cooperative Agreements, offers accepted for purchase of real estate, and other LACMTA actions that will result in specific expenditures at a future time.

INCURRED COST: The total value of work performed to date of services received, and acquired materials or properties.

EXPENDITURES: The total dollar amount of checks written by LACMTA's Accounting department for contractor or consultant invoices, third party invoices, staff salaries, and closing payments for escrow accounts that is reported in LACMTA's Financial Information System (FIS).

CONSTRUCTION: Includes guideways, yards and shops, systems equipment, stations, and vehicles.

PROFESSIONAL SERVICES: Includes general engineering, construction management services, consultant design support services during construction, legal counsel, and agency (MTA staff) costs.

RIGHT-OF-WAY: Includes real estate appraisals, purchase cost of parcels, easements, right-of-entry permits, escrow fees, and tenant relocation.

UTILITY/AGENCY FORCE ACCOUNT: Includes work by outside agencies and utilities in design coordination and review.

CONTINGENCY: A fund established at the beginning of a project to provide for anticipated but unknown additional costs that may arise during the course of the project.

SPECIAL CONDITIONS: Includes utilities relocation, environmental compliance and mitigation, master cooperative agreements, insurance program, artwork, systems integration testing and pre-revenue operations.

APPENDIX

LIST OF ACRONYMS

AFE	Authorization For Expenditure
ATC	Automatic Train Control
CADD	Computer Aided Drafting and Design
CALTRANS	California Department of Transportation
CD	Calendar Day
CM	Construction Manager
CMAC	Congestion Mitigation Air Quality
CN	Change Notice
CO	Change Order
CPM	Critical Path Method
CPUC	California Public Utilities Commission
CR	Camera Ready
CTC	California Transportation Commission
CUD	Contract Unit Description
DB	Design/Build
DBB	Design/Bid/Build
DD	Design Development
DOT	Department of Transportation
DWP	Department of Water and Power
EIR	Environmental Impact Report
EIS	Environmental Impact Statement
EPBM	Earth Pressure Balance Machine
ESP	Eastside LRT Partners
FAR	Federal Acquisition Regulation
FD	Final Design
FEIS	Final Environmental Impact Statement
FEIR	Final Environmental Impact Report
FFGA	Full Funding Grant Agreement
FIS	Financial Information System
FSEIR	Final Supplemental Environmental Impact Report
FSEIS	Final Supplemental Environmental Impact Statement
FTA	Federal Transit Administration
FTE	Full Time Equivalent
GDSR	Geotechnical Design Summary Report
IFB	Invitation for Bid
IPO	Integrated Project Office
JV	Joint Venture
LA	Los Angeles
LABOE	Los Angeles Bureau of Engineering
LACFCD	Los Angeles County Flood Control District
LACMTA	Los Angeles County Metropolitan Transportation Authority
LADOT	Los Angeles Department of Transportation

APPENDIX
LIST OF ACRONYMS (Continued)

LADPW	Los Angeles Department of Public Works
LADWP	Los Angeles Department of Water and Power
LAUSD	Los Angeles Unified School District
LNTP	Limited Notice To Proceed
LONP	Letter Of No Prejudice
LRT	Light Rail Transit
L RTP	Long Range Transportation Plan
LRV	Light Rail Vehicle
MIS	Major Investment Study
MPSR	Monthly Project Status Report
MTA	Metropolitan Transportation Authority
N/A	Not Applicable
NEPA	National Environmental Protection Act
NPDES	National Pollution Discharge Elimination System
NTE	Not to Exceed
NTP	Notice To Proceed
OCIP	Owner-Controlled Insurance Program
P3	Primavera Project Planner® (scheduling software)
PC	Project Control
PE	Preliminary Engineering
PEER	Permit Engineering Evaluation Report
PGL	Pasadena Gold Line
PIP	Project Implementation Plan
PM	Project Manager
PMA	Project Management Assistance
PMIP	Project Management Implementation Plan
PMOC	Project Management Oversight Consultant
PMP	Project Management Plan (manual)
P&P	Policies & Procedures
PR	Project Report
PSR	Project Study Report
QA	Quality Assurance
QAR	Quality Assurance Report
QC	Quality Control
QPSR	Quarterly Project Status Report
RAC	Review Advisory Committee
RAG	Rail Activation Group
RFC	Request For Change
RFP	Request For Proposal
ROD	Record Of Decision
ROD	Revenue Operations Date
ROM	Rough Order of Magnitude

APPENDIX
LIST OF ACRONYMS (Continued)

ROW	Right-Of-Way
SCAQMD	Southern California Air Quality Management District
SCE	Southern California Edison
SCRRA	Southern California Regional Rail Authority
SHA	State Highway Account
SHPO	State Historic Preservation Office
SIT	System Integration Testing
SOV	Schedule Of Value
SOW	Statement Of Work
SP	Special Provision
STIP	State Transportation Improvement Program
STP	Surface Transportation Program
TBD	To Be Determined
TBM	Tunnel Boring Machine
TCRP	Traffic Congestion Relief Program
TPSS	Traction Power Substation
TRACS	Transit Automatic Control System
UFS	Universal Fare System
USDOT	U.S. Department Of Transportation
VE	Value Engineering
WBS	Work Breakdown Structure
WP	Work Package