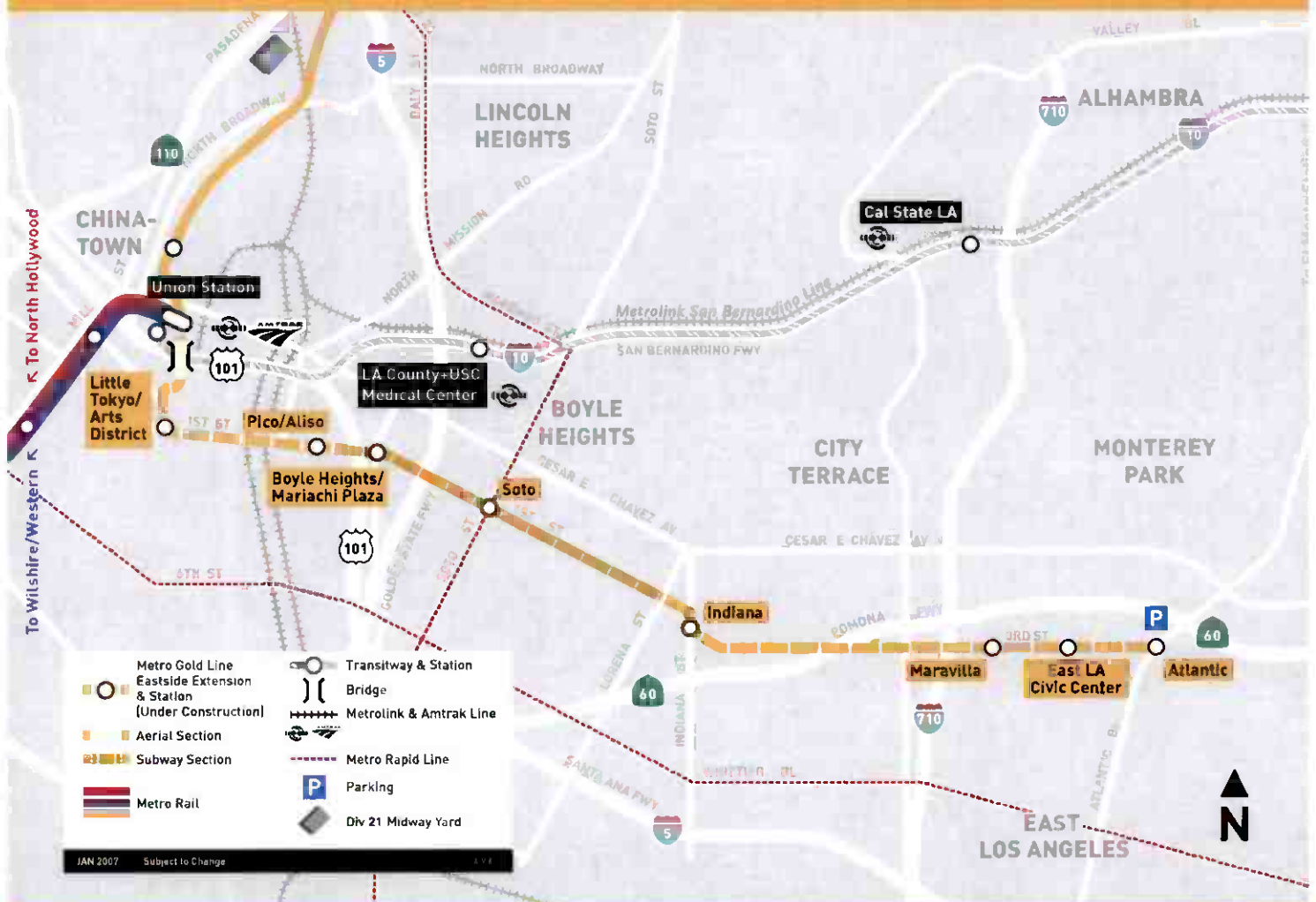


July 2007

Metro Gold Line Eastside Extension



METRO GOLD LINE EASTSIDE EXTENSION

MONTHLY PROJECT STATUS REPORT

THE PREPARATION OF THIS DOCUMENT HAS BEEN FINANCED IN PART THROUGH A GRANT FROM THE U. S. DEPARTMENT OF TRANSPORTATION, FEDERAL TRANSIT ADMINISTRATION (FTA), UNDER THE FEDERAL TRANSIT ACT OF 1964, AS AMENDED, AND FUNDS FROM THE STATE OF CALIFORNIA.

JULY 2007

TABLE OF CONTENTS

	Page No.
Project Overview & Status.....	1-4
Management Issues.....	4
Project Status	
• Project Scope.....	5
• Schedule	
○ Key Milestones Six-Month Lookahead	6
○ Project Master Schedule Critical Path.....	7-16
○ Critical Path Narrative.....	17
• Project Cost Status.....	18-19
• Financial/Grant Status.....	20-21
• Staffing.....	22-24
• Real Estate.....	25
• Environmental.....	26
• Community Relations.....	26
• Quality Assurance.....	26
• Safety.....	27
• Art Development.....	27
• Third Party.....	28-29
• CPUC Crossing.....	30
Contract C0802 Status	31
Contract C0803 Status	32
Contract E700051F Status.....	33
Contract P2550 Status	34
Construction Photographs	35-39
Appendices.....	40-43

PROJECT OVERVIEW & STATUS

The Metro Gold Line Eastside Extension Project is a six-mile, dual track light rail system with eight new stations and one station modification. The system originates at Union Station in downtown Los Angeles, where it connects with the Pasadena Gold Line, traveling generally east to Pomona and Atlantic Boulevards. The system will bridge State Route 101 Freeway and traverse the existing 1st Street Bridge over the Los Angeles River. The system will travel south on Alameda Street and then east on 1st Street with two stations at Alameda and Utah Streets. East of the Los Angeles River and 1st and Utah Streets, the alignment transitions to tunnel for approximately 1.7 miles, and continues beneath 1st Street to underground stations at 1st Street and Boyle Avenue and 1st Street and Soto Street. The alignment returns to the surface near the intersection of 1st Street and Lorena Streets, then jogs to the south, transitioning to follow 3rd Street with stations at Indiana Street, Ford Boulevard, Mednik Avenue and Pomona and Atlantic Boulevards.

During this period, the Approved For Construction (AFC) design package for Train Control was reviewed and returned to the contractor for issue resolution. Also, Advanced Partial Unit Design AFC packages were submitted for review pertaining to Segments 3A, 3B, 3C and 4B. All design packages are planning to be approved for construction by mid-August 2007.

Procurement of the City of Los Angeles 1st Street Bridge Phase III Widening Project continued per the revised plan. The bid documents will become available to bidders by the end of August 2007, after the Right-of-Way Certification and Construction Authorization are completed. Phase III completion will not impact the construction of the project guideway/track work on the bridge.

At the Ramona Opportunity High School (ROHS) site, the Los Angeles Unified School District (LAUSD) contractor completed construction of a shared driveway and temporary parking lot. The C0803 contractor completed the curb and gutter along both sides of the shared driveway. This has enabled LAUSD to vacate the temporary parking easement granted by Metro at the northeast corner of Indiana St. and 3rd Street. Metro, in accordance to the C0803 Contract, granted the contractor complete access to the site for constructing the Indiana Station.

Underground construction is proceeding per plan. The tunneling contractor completed the concrete placement of walkway between the Soto Station and the East Portal on both tunnels and re-built a short section of invert slab in the eastbound tunnel. Also, installation of wet-stand pipe and walkway handrail in the tunnels is progressing per schedule. The same holds true for installation of plumbing and doors in the tunnels cross-passages. The tunneling contractor this period started demobilizing from the site. Temporary utilities from the tunnels between both underground stations and tunneling support equipment were removed. All tunneling activities are scheduled to complete in August 2007.

At the Boyle Heights/Mariachi Plaza Station, during this period construction crews completed installing the remaining exterior and interior walls at track level. The mezzanine slab construction is proceeding per plan with concrete pours completed between grid lines 4 and 10. Removal of 3rd and 4th level struts and walers began, thereby clearing the path for the start next period of exterior wall construction at the mezzanine level. The station entrance excavation is also progressing per schedule.

PROJECT OVERVIEW & STATUS

At the Soto Station, the invert slab section by the east hammerhead was poured and installation of the HDPE water shield on the walls by the east hammerhead was completed. Also this period, field crews continued installation of exterior walls at track level per plan. On the north side, concrete was poured for the exterior walls between grid lines 4 and 10. On the south side, rebar and forms were placed on exterior walls between grid lines 2 and 6. Construction of mezzanine walls at the station entrance is continuing per schedule.

At the West Portal, field crews poured concrete on the remaining exterior walls adjacent to the Boyle Heights/Mariachi Plaza Station and continued installing extension rebar and forms at the top of the exterior walls. Also this period, concrete was poured on the dividing interior wall.

At the East Portal, support of concrete operations for tunnel and cross-passage construction between the Soto Station and the East Portal continues per schedule.

At-grade construction is proceeding according to plan. Along Alameda Street (Segment 1), fabrication of concrete panels for the Mechanically Stabilized Earth (MSE) wall has completed. The MSE wall construction continued this period as planned. The fourth row of pre-cast panels was erected and the third lift of dirt compacted. Street improvements continued at the following intersections: Alameda St. and Temple St. and Alameda St. and 1st Street.

Along 1st Street between Alameda and Vignes Streets (Segment 2A), construction of the guideway began. Existing asphalt was removed and excavation proceeded to grade. Field crews started installation of OCS pole foundations and ductbank for fiber optics. In a separate segment, also along 1st Street east of Los Angeles River (Segment 2B), guideway construction began with existing asphalt demolition between Mission Road and Anderson Street.

At the east end of the alignment along 3rd Street between Atlantic Boulevard and Mednik Street (Segment 7), guideway construction continued per schedule. Field crews completed embedded rail and poured concrete plinth west of Civic Center Drive and at the intersection of 3rd Street and Woods Avenue. Between Mednik and McDonnell Avenues (Segment 6), guideway construction also continued per plan. Field crews completed installing embedded rail and poured concrete plinth on the west bound track.

Construction along 3rd Street, between Eastern and Rowan Avenues in Segment 5, continued according to plan. Construction crews completed the rail barrier construction under the Route 60 Freeway and continued street widening on the south side of 3rd Street between Rowan and Hebert Avenues. Also this period, guideway construction continued per plan between Eastern and Marianna Avenues, and between Gage and the State Highway 60 onramp, where demolition was completed and the installation of OCS pole foundations began.

PROJECT OVERVIEW & STATUS

The 3rd Street overcrossing retrofit at the I-710 Freeway continues per schedule. This period, fabrication of steel casings for the existing bridge piers was completed. The casings were delivered to the site and welding began. Field crews installed bridge deck steel reinforcing and forms, and poured the deck concrete.

In other areas of the alignment, at-grade station construction continues according to plan. At the Atlantic Station, construction crews began installation of ramp walkways this period. At the East Los Angeles Civic Center Station, field crews completed installing rebar, forms and concrete for the station platform walls. Also, at Maravilla Station installation of the TC&C room walls was completed.

The City of Los Angeles contractor for the 1st Street Viaduct Bridge Widening Project, Phase II Girder Strengthening, is progressing according to plan. At the west end of the bridge, construction crews completed installing girder rebar, forms and concrete for bridge segments 7 through 9, and poured the deck concrete for bridge segments 8 and 9 this period. Demolition of walkway and removal of abandoned utilities on the arch section were completed as well. Also, installation of girder reinforcing steel for bridge segments 1 through 5 at the east end began.

Metro Operations continued installation of the new fiber optics cable from the Rail Operations Control Center to the 7th/Metro Station. Completion and testing of this activity is scheduled for the end of August 2007. The fiber optics cable will provide the necessary links required by the project. The C0803 contractor continues to coordinate with Metro staff for the testing of existing fiber optic connections.

The fabrication and delivery of 50 light rail vehicles (LRV's), Contract No. P2550, continues per the revised plan. Ten vehicles are required for the Metro Gold Line Eastside Extension Project. Fabrication of car assemblies is done at the contractor's plant in Italy and final assembly and testing is done at the contractor's facility in California. To date, five completed LRV's have been delivered to Metro. These vehicles are going through the final acceptance process. Three completed vehicles are scheduled for delivery next period. Delivery of completed vehicles is lagging behind the revised plan. The contractor has been requested to provide a mitigation plan to recover the schedule. Nevertheless, the current delivery schedule still supports the project systems integration testing and pre-revenue phases.

The Universal Fare System (UFS) equipment fabrication is expected to take up to six months. Metro staff is currently evaluating more desirable installation dates to minimize the risk of equipment damage and vandalism. Once this is established, the vendor will be notified to plan fabrication accordingly. If necessary, the finished equipment will be stored at the vendor's facility until the equipment is required for installation.

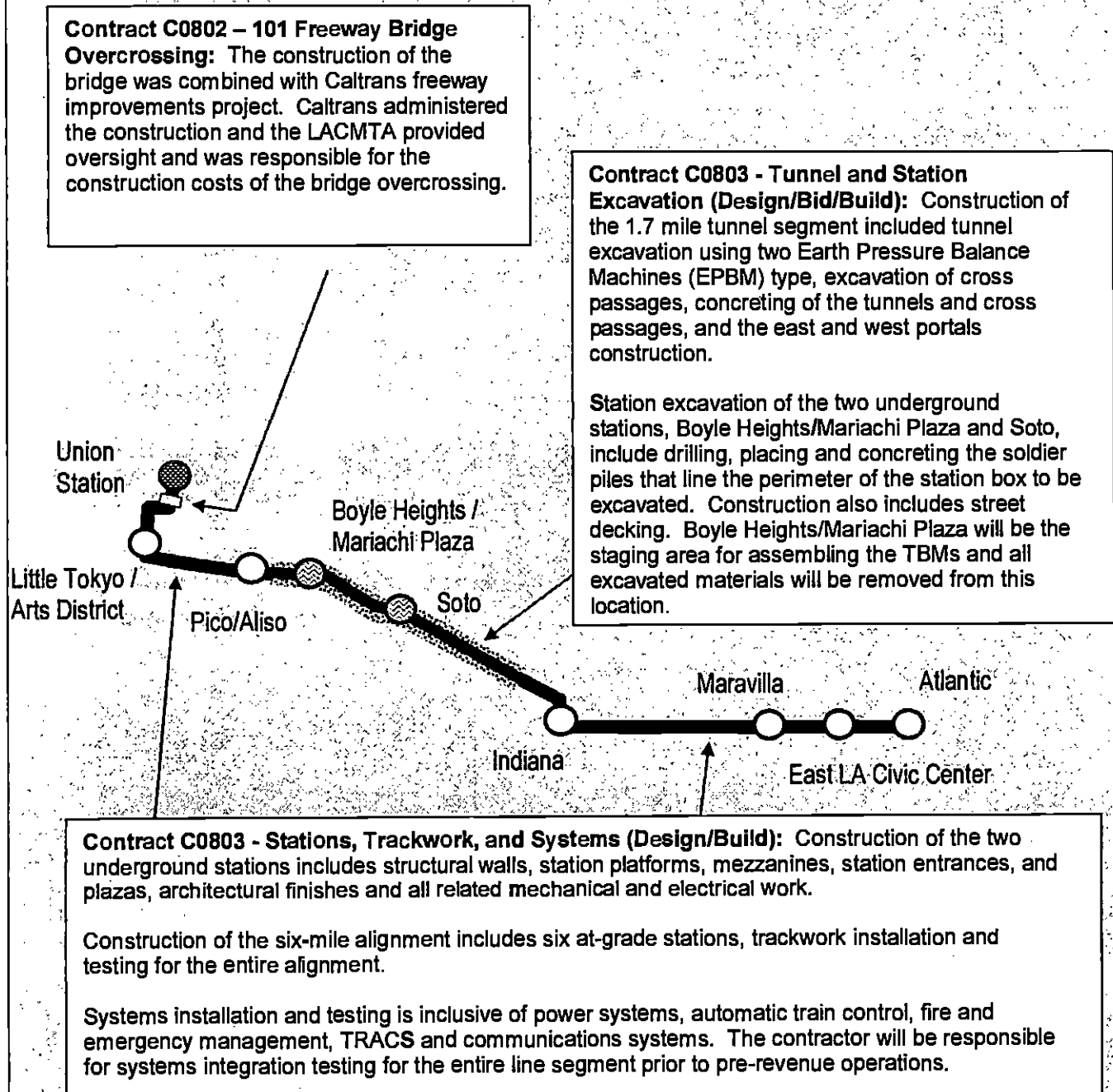
PROJECT OVERVIEW & STATUS

The Metro Art Department continued providing technical support and coordination between the C0803 contractor and the artists responsible to provide art pieces for the eight stations. The artists continue to finalize the art design and the development of shop drawings with multiple fabricators. Metro and ELRTC staff this period continued reviewing engineering specifications, and foundation and support calculations for art pieces planned at several stations.

MANAGEMENT ISSUES

No Management Issues for the period ending July 2007.

PROJECT SCOPE



**Metro Gold Line Eastside Extension
Monthly Project Status Report**

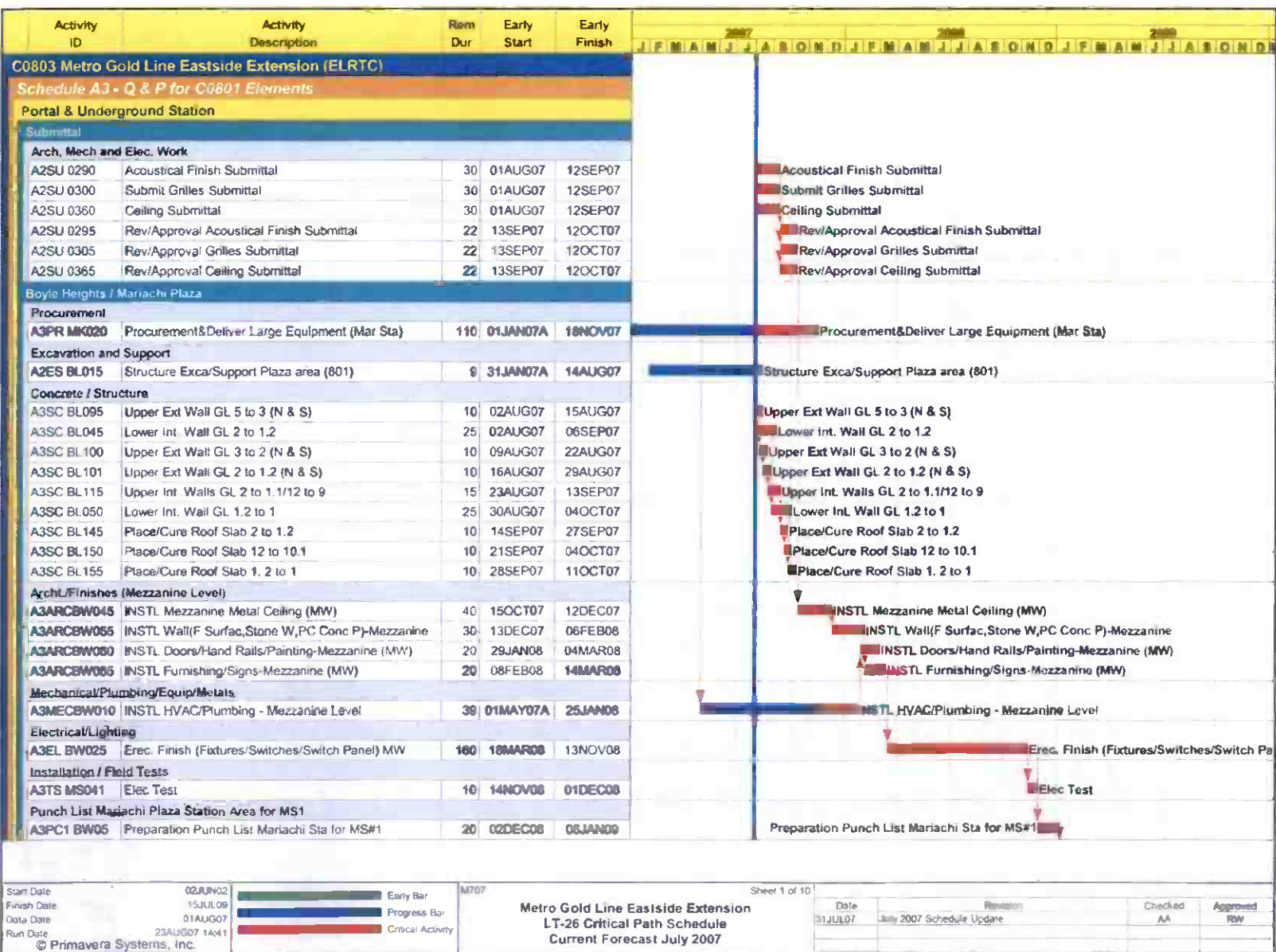
July 2007

KEY MILESTONE SCHEDULE SIX-MONTH LOOKAHEAD

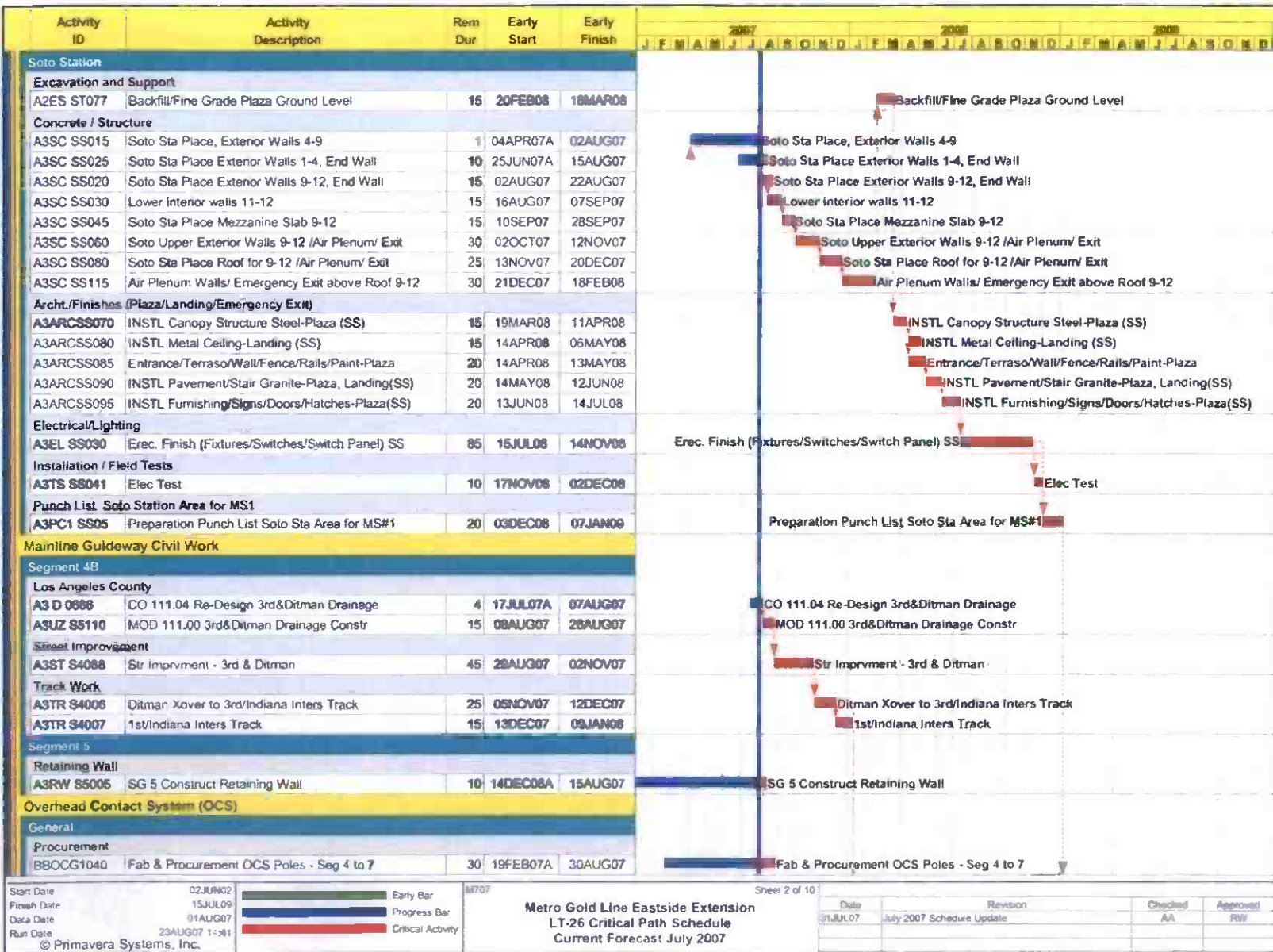
	Milestone Date	Jul-07	Aug-07	Sep-07	Oct-07	Nov-07	Dec-07
Started Pico/Aliso Station Construction	07/09/07	○					
Completed Tunnel Civil Works	07/13/07 *	○					
Completed Tunnels Cross-Passage Construction	07/17/07	○					
Started Indiana Station Construction	07/19/07	○					
LAUSD Returned to Metro Property at the Northeast Corner of Indiana St. & 3rd St. (Temporary Parking)	07/30/07 *	△					
Complete Civil Guideway Construction - Segment 7 East End of the Alignment	08/13/07		○				
Complete All Design Approved for Construction (AFC)	08/14/07 *		○				
Complete 3rd Street and 710 Freeway Overcrossing	08/17/07 *		○				
Complete MSE Wall From Commercial Street to Alameda Street - Segment 1	08/17/07 *		○				
Metro Completes New Fiber Optics from ROCC to Red Line 7th and Metro Station	08/21/07		◆				
City of Los Angeles Issue for Bid First Street Bridge Phase III Widening Contract	08/31/07		△				
Start Installation of Overhead Contact System Equipment - Segment 7 East End of the Alignment	09/07/07 *			○			
Complete Mezzanine Slab at Boyle Heights/Mariachi Plaza Station	09/20/07			○			
Complete West Portal Structure	09/25/07			○			
Start Rail Installation in the Tunnels	10/02/07				○		
Start Train Control System Construction - Segment 7 East End of the Alignment	10/23/07 *				○		
Start Installation of Cable Communications System - Segment 1 West End of the Alignment	10/24/07				○		
City of Los Angeles Completes First Street Bridge Phase II Girder Strengthening Contract	10/24/07				△		
Complete Civil Guideway Construction - Segments 2A and 2B	11/07/07					○	
Complete Temporary Baggage Handling Road at Union Station	11/15/07					○	
Start Installing 34.5 KV Traction Power Feeder Cable in the Tunnels	12/07/07 *						○
<div> <div>◆ LAC MTA Staff Milestone</div> <div>○ Eastside LRT Constructors</div> <div>FTA</div> <div>FTA Approval</div> <div>△ Other Agencies</div> <div>* New Date</div> <div>M Metro</div> <div>LAC MTA Board Approval</div> </div>							

Six-month lookahead schedule for Contract C0803 reflects the contractor's current CPM schedule.

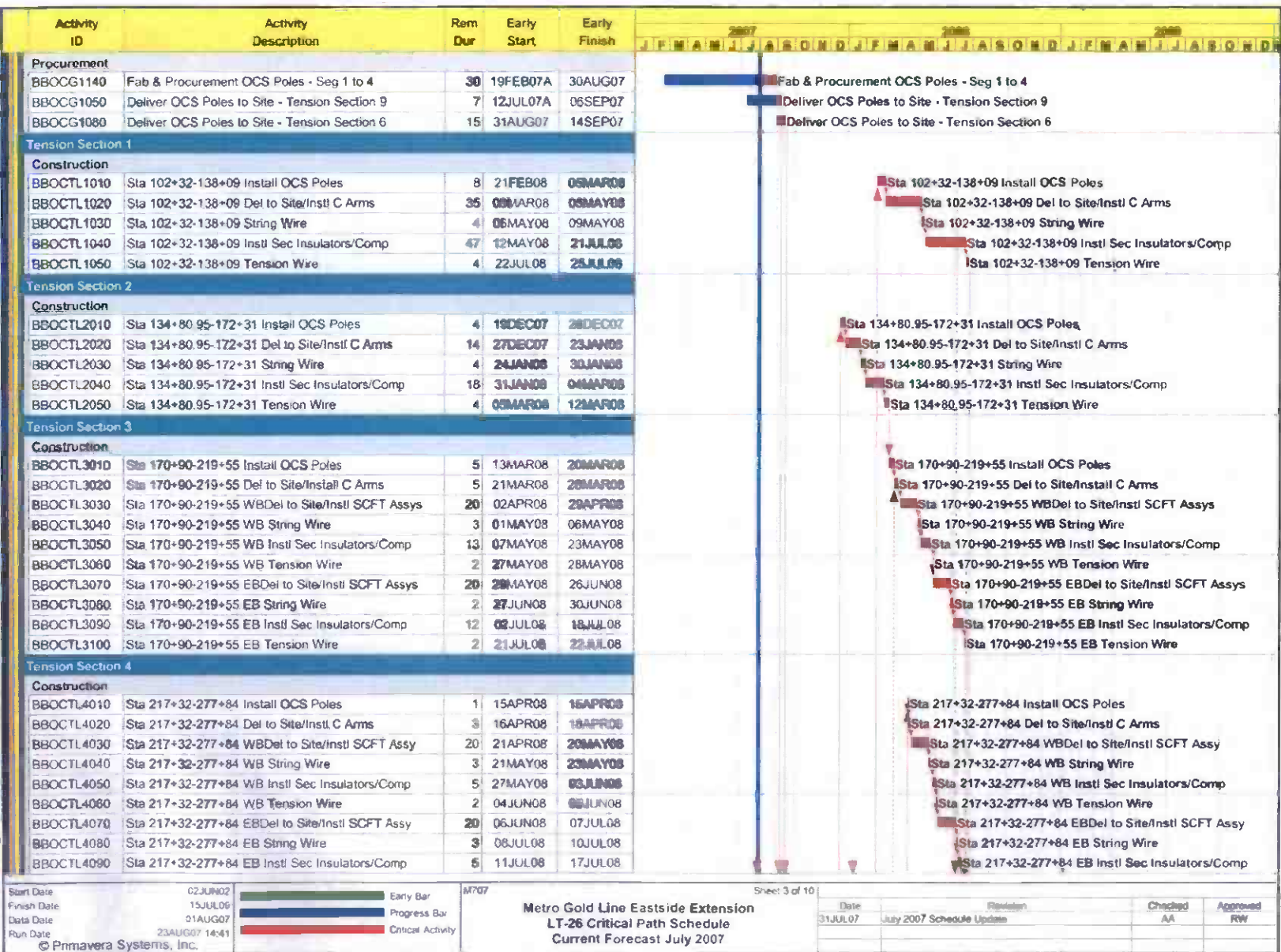
PROJECT MASTER SCHEDULE
CRITICAL PATH (1 of 10)



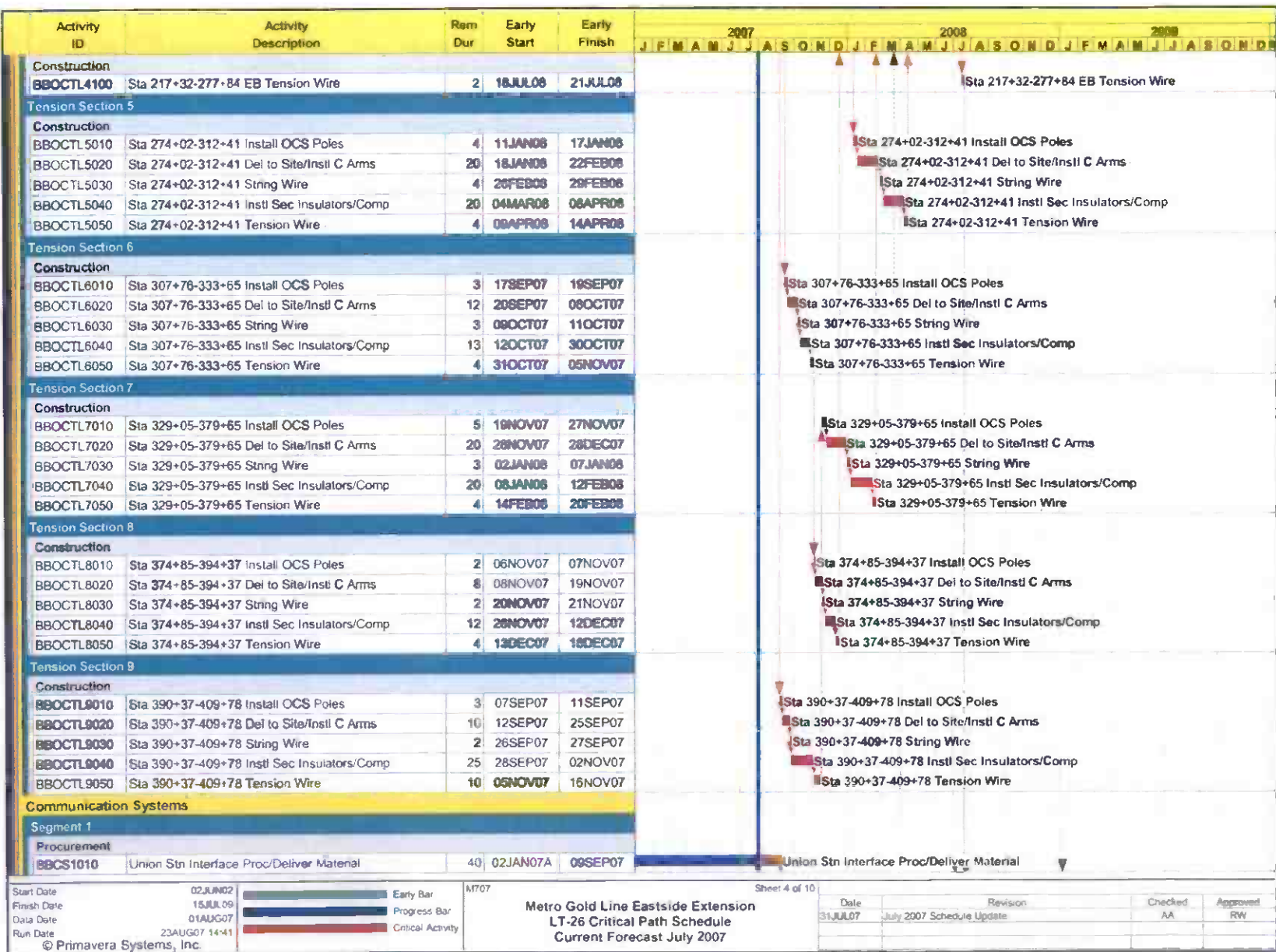
PROJECT MASTER SCHEDULE
CRITICAL PATH (2 of 10)



PROJECT MASTER SCHEDULE
CRITICAL PATH (3 of 10)



PROJECT MASTER SCHEDULE CRITICAL PATH (4 of 10)



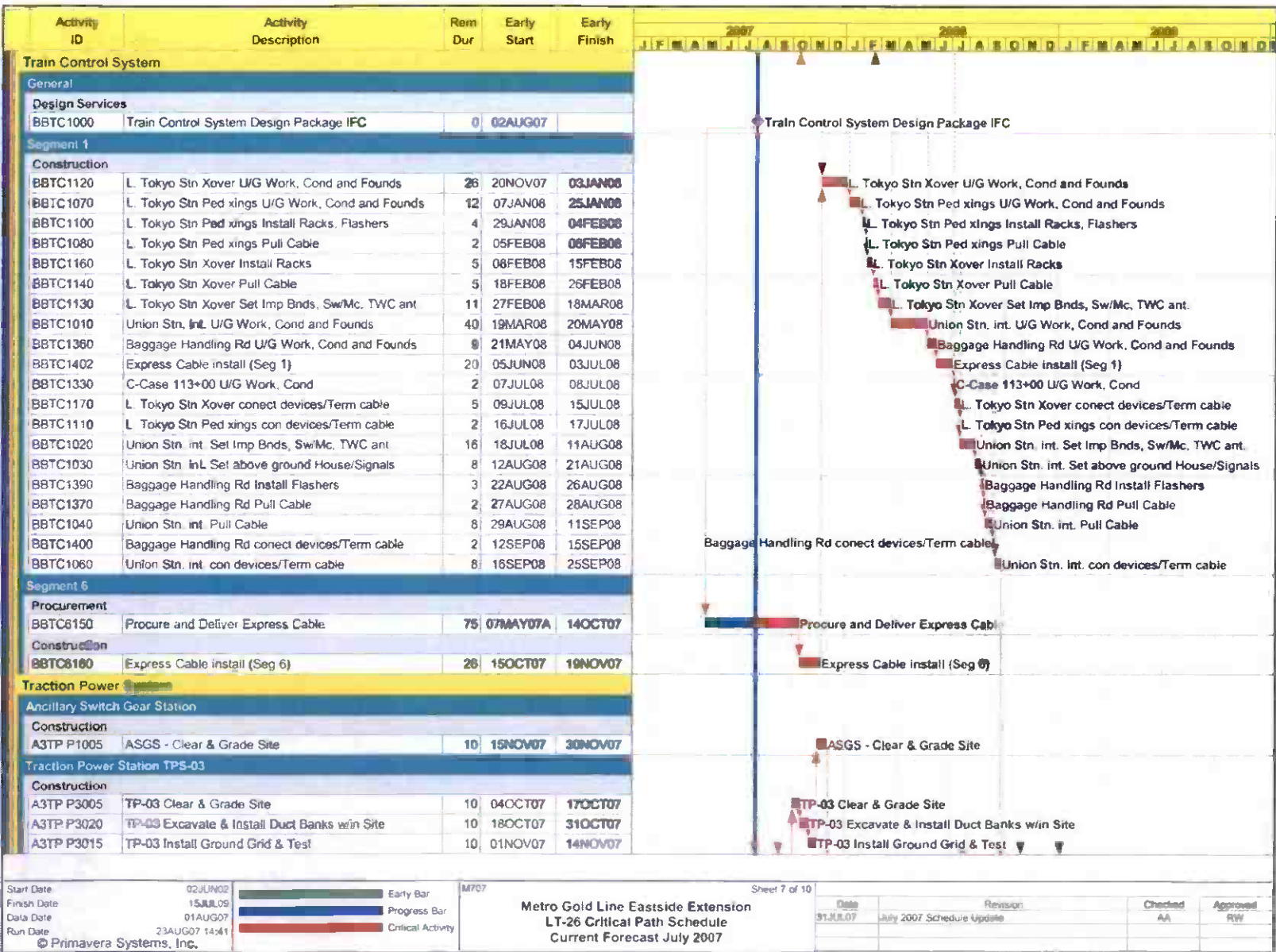
PROJECT MASTER SCHEDULE
CRITICAL PATH (5 of 10)



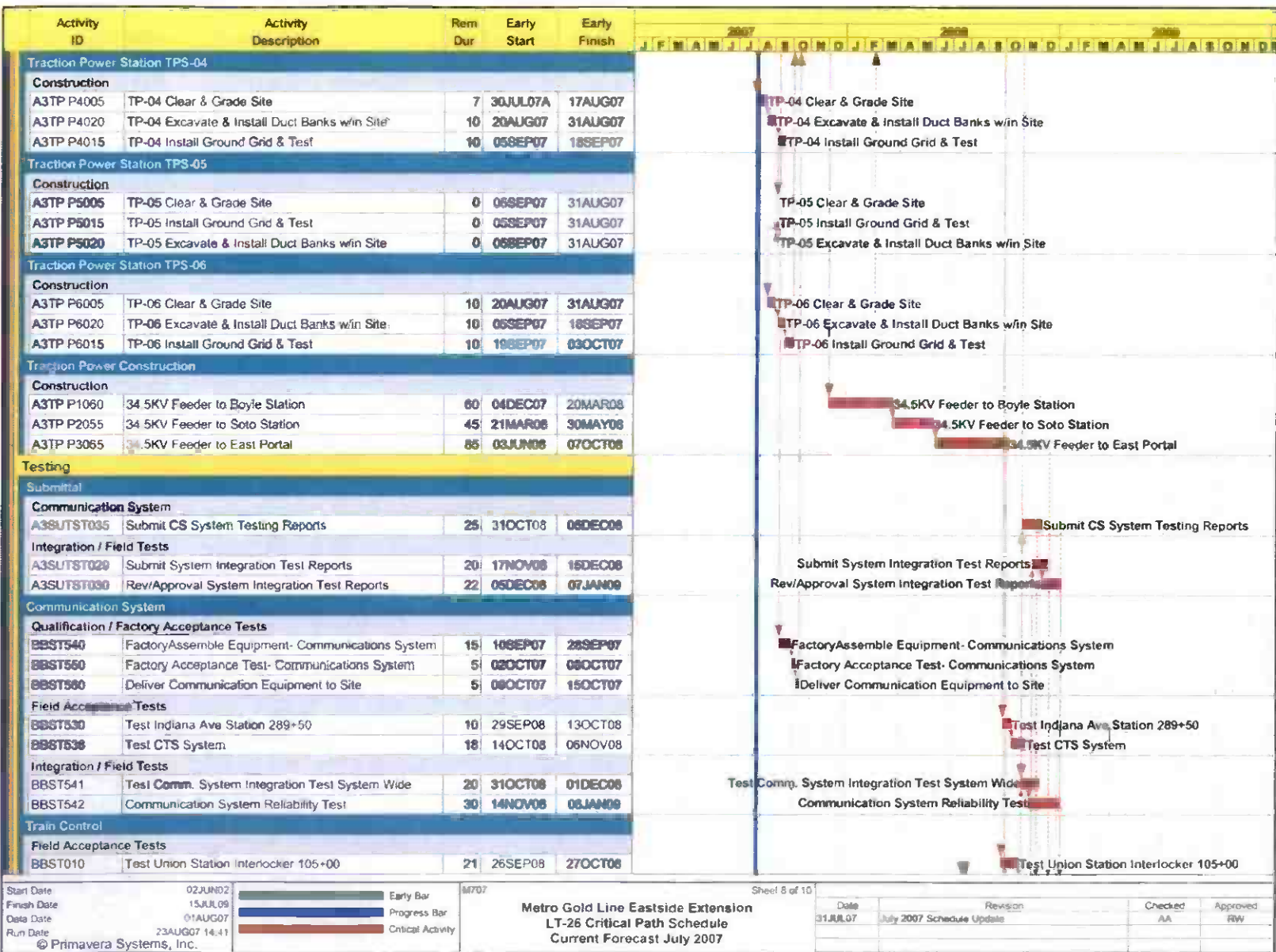
PROJECT MASTER SCHEDULE CRITICAL PATH (6 of 10)



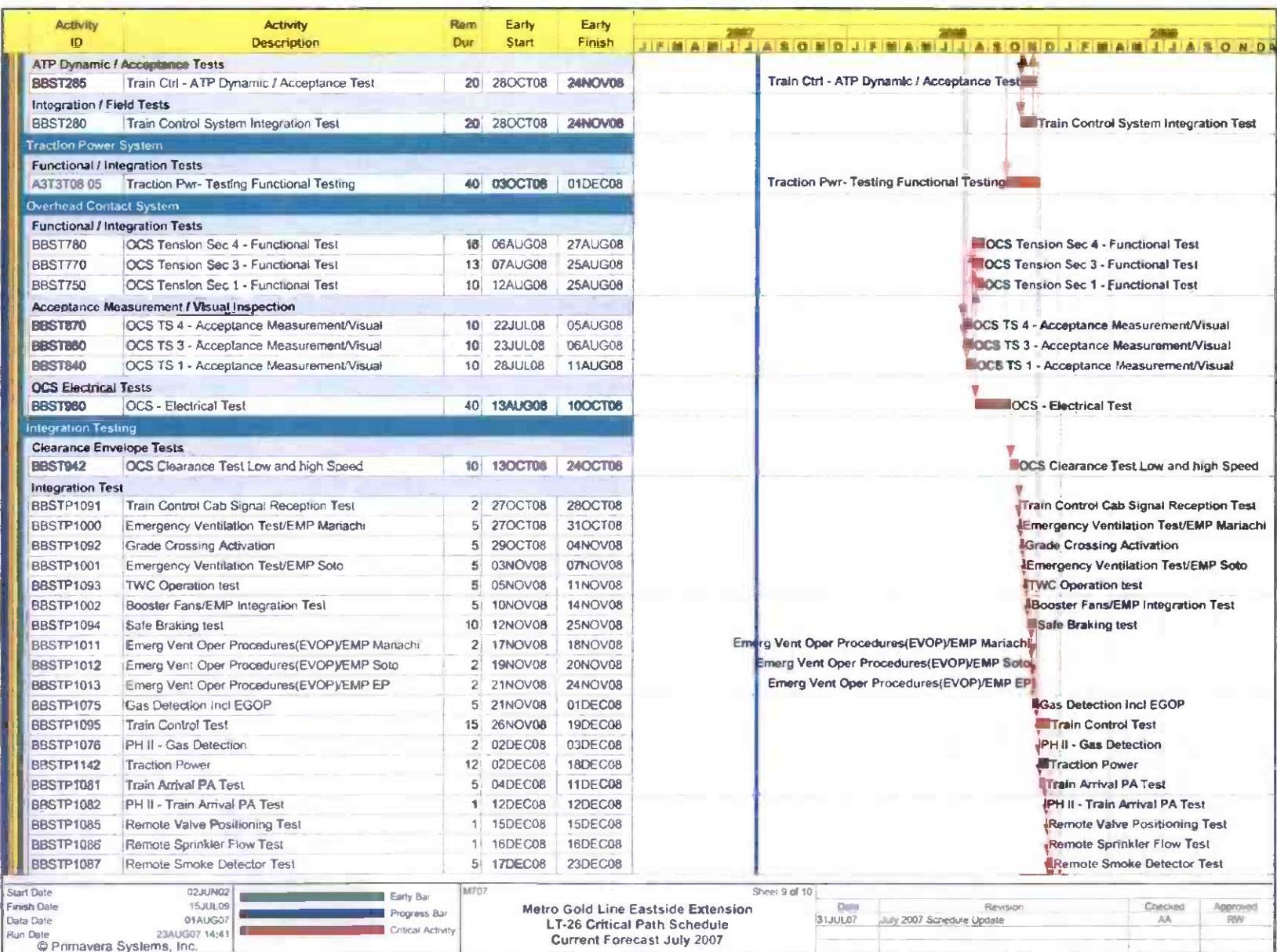
PROJECT MASTER SCHEDULE CRITICAL PATH (7 of 10)



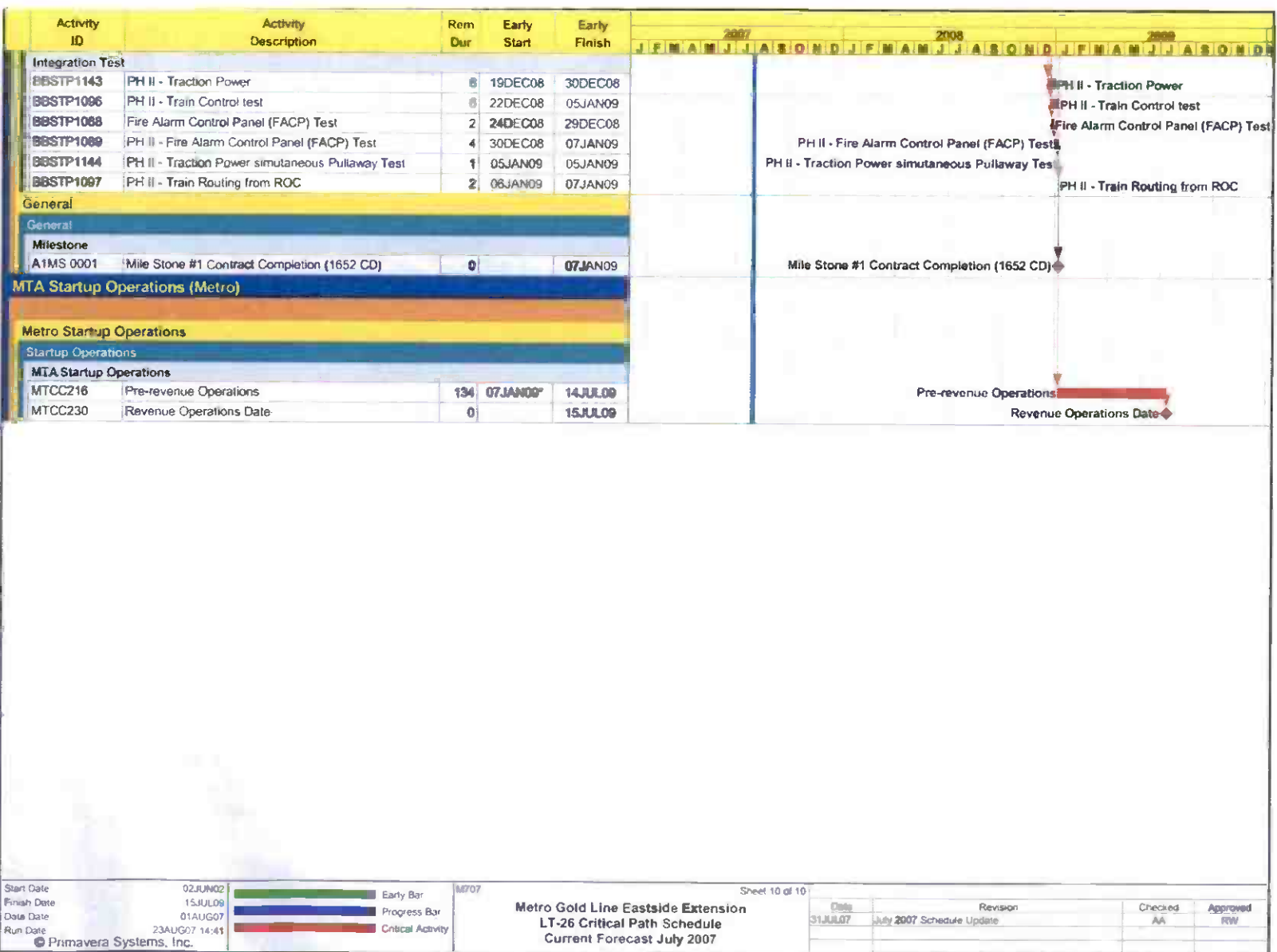
PROJECT MASTER SCHEDULE CRITICAL PATH (8 of 10)



PROJECT MASTER SCHEDULE
CRITICAL PATH (9 of 10)



PROJECT MASTER SCHEDULE CRITICAL PATH (10 of 10)



CRITICAL PATH NARRATIVE

Current Critical Path Analysis

The Boyle Heights/Mariachi Plaza Station excavation of the main station entrance plaza and critical construction of the mezzanine slab are proceeding per plan. Street widening and guideway construction along Segment 4B on the Los Angeles County section of the alignment, as well as critical procurement of communications equipment and Overhead Catenary System poles are also on the project critical path. The C0803 contractor is reporting their overall progress to have been impacted by delayed delivery of communications equipment and OCS poles, and also by Segment 4B design changes. Metro feels that opportunities will be available in follow-on activities to make up for impacts to the schedule. Once the C0803 contractor presents a mitigation plan that addresses these delays, any remaining schedule impact will be assessed and reported.

After completion of the mezzanine slab at Boyle Heights/Mariachi Plaza and Soto Stations, the project critical path becomes construction completion of the two underground stations and in a parallel path, construction of the Segment 4B guideway and trackwork. Likewise, after delivery of critical communications equipment and OCS poles, the critical path becomes the installation of communication equipment in the stations and installation of OCS equipment throughout the alignment. Other System equipment installation such as Train Control and Traction Power, and local facilities testing are the last stage of the critical path prior to entering the final test stage, where systems integration testing and pre-revenue operations are conducted.

PROJECT COST STATUS

COST REPORT BY ELEMENT

ORIGINAL SCOPE ACTIVITIES

DOLLARS IN THOUSANDS

ELEMENT	DESCRIPTION	ORIGINAL BUDGET	CURRENT BUDGET		COMMITMENTS		EXPENDITURES		CURRENT FORECAST		BUDGET / FORECAST VARIANCE
			PERIOD	TO DATE	PERIOD	TO DATE	PERIOD	TO DATE	PERIOD	TO DATE	
C	CONSTRUCTION	633,221	-	651,961	1,849	651,329	26,572	410,822	-	651,961	-
S	SPECIAL CONDITIONS	19,494	-	43,948	1,058	38,880	1,320	27,825	-	43,948	-
R	RIGHT-OF-WAY	40,358	-	42,299	-	46,182	3,010	43,573	-	42,299	-
P	PROFESSIONAL SERVICES	135,304	-	135,841	7,569	125,763	1,784	109,416	-	135,841	-
PC	PROJECT CONTINGENCY	60,254	-	14,599	-	-	-	-	-	14,599	-
PR	PROJECT REVENUE	(4,617)	-	(4,633)	-	-	-	(44)	-	(4,633)	-
SUBTOTAL		884,014	-	884,014	10,476	862,155	32,886	591,592	-	884,014	-
PF	PROJECT FINANCE COST	14,800	-	14,800	45	1,137	45	1,137	-	14,800	-
TOTAL		898,814	-	898,814	10,521	863,292	32,731	592,729	-	898,814	-

NOTE: EXPENDITURES ARE CUMULATIVE THROUGH JUNE 2007

PROJECT COST ANALYSIS

Original Budget

The Full Funding Grant Agreement (FFGA) was adopted June 1, 2004 in the amount of \$898.8 million. The Original Budget reflects the adopted FFGA.

Current Budget and Current Forecast

The Current Budget and Forecast remains the same at \$898.8 million.

Commitments

The Commitments increased by \$10.5 million this period due to executed modifications associated with Contract C0803 – Tunnel, Stations, Trackwork, and Systems; 3rd Party Master Cooperative Agreements; and the FY-08 Metro Board approved budgets. The \$863.3 million in Commitments to date represents 96.0% of the Original Budget.

Expenditures

Expenditures are cumulative through June 2007. The Expenditures increased by \$32.7 million this period primarily due to construction costs associated with Contract C0803 – Tunnel, Stations, Trackwork, and Systems. The expenditures for this period are higher than usual due to the posting of both the May 2007 and June 2007 invoices for Contract C0803 in the Metro's Financial Information System (FIS). The \$592.7 million in Expenditures to date represents 65.9% of the Original Budget.

PROJECT COST STATUS

COST REPORT BY ELEMENT CONCURRENT NON-FPGA PROJECT ACTIVITIES DOLLARS IN THOUSANDS

ELEMENT	DESCRIPTION	ORIGINAL BUDGET	CURRENT BUDGET		COMMITMENTS		EXPENDITURES		CURRENT FORECAST		BUDGET / FORECAST VARIANCE
			PERIOD	TO DATE	PERIOD	TO DATE	PERIOD	TO DATE	PERIOD	TO DATE	
C	CONSTRUCTION	18,000	-	41,174	-	33,571	1,034	7,628	-	41,174	-
S	SPECIAL CONDITIONS	-	-	2,719	17	1,849	66	1,070	-	2,719	-
R	RIGHT-OF-WAY	-	-	-	-	-	-	-	-	-	-
P	PROFESSIONAL SERVICES	-	-	2,280	40	808	9	105	-	2,280	-
PC	PROJECT CONTINGENCY	-	-	-	-	-	-	-	-	-	-
PR	PROJECT REVENUE	-	-	(4,087)	-	(3,588)	-	(279)	-	(4,087)	-
SUBTOTAL		18,000	-	42,086	58	32,639	1,109	8,525	-	42,086	-
PF	PROJECT FINANCE COST	-	-	-	-	-	-	-	-	-	-
TOTAL		18,000	-	42,086	58	32,639	1,109	8,525	-	42,086	-

NOTE: EXPENDITURES ARE CUMULATIVE THROUGH JUNE 2007

PROJECT COST ANALYSIS

Original Budget

The Metro Board adopted the Original Budget of \$18.0 million on March 24, 2005.

Current Budget and Current Forecast

The Current Budget and Forecast remain the same at \$42.1 million.

Commitments

The Commitments increased by \$0.1 million this period due to environmental services provided by the Department of Toxic Substance Control for the rebuild of Ramona Opportunity High School and the FY-08 Metro Board approved budgets. The \$32.6 million in Commitments to date represents 77.6% of the Current Budget.

Expenditures

Expenditures are cumulative through June 2007. The Expenditures increased by \$1.1 million this period primarily due to work performed on urban design elements, construction of a reduced low profile overhead system, traction power sectionalization, and work requested by the County of Los Angeles for street improvements. The \$8.5 million in Expenditures to date represents 20.3% of the Current Budget.

Metro Gold Line Eastside Extension
Monthly Project Status Report

July 2007

FINANCIAL/GRANT STATUS – ORIGINAL SCOPE ACTIVITIES

JULY 2007		STATUS OF FUNDS BY SOURCE									
SOURCE	(A) ORIGINAL BUDGET	(B) TOTAL FUNDS ANTICIPATED	(C) TOTAL FUNDS AVAILABLE	(D) COMMITMENTS \$	(D/B) %	(E) EXPENDITURES \$	(E/B) %	(F) (F/B) BILLED TO FUNDING SOURCE			
								\$	%	\$	%
FEDERAL - SECTION 5309 NEW START	\$490.700	\$490.700	\$155.193	\$468.865	96%	\$326.868	67%	(1)		\$326.868	67%
FED - SECTION 5309 FIXED GUIDEWAY	\$23.100	\$12.000	\$12.000	\$12.000	100%	\$12.000	100%			\$12.000	100%
FEDERAL - CMAQ	\$10.300	\$10.300	\$10.276	\$10.276	100%	\$10.276	100%			\$10.276	100%
REGIONAL IMPROVEMENT PROG - FED	\$179.600	\$4.600	\$4.600	\$4.600	100%	\$4.600	100%			\$4.600	100%
REGIONAL IMP PROG - STATE	\$0.600	\$175.600	\$131.796	\$175.600	100%	\$87.996	50%			\$87.996	50%
STATE TCRP	\$45.000	\$45.000	\$45.000	\$45.000	100%	\$45.000	100%			\$45.000	100%
PROP A 35% / PROP C 40%	\$124.614	\$135.714	\$135.714	\$135.714	100%	\$94.752	70%			\$76.787	57%
LEASE REVENUES	\$10.100	\$10.100	\$10.100	\$10.100	100%	\$10.100	100%			\$10.100	100%
ACCRUALS											
SUB-TOTAL	\$884.014	\$884.014	\$504.679	\$862.155	98%	\$591.592	67%			\$573.627	65%
PROP A / PROP C (INTEREST COST)	\$14.800	\$14.800	\$1.980	\$1.137	8%	\$1.137	8%			\$0.363	-2%
TOTAL	\$898.814	\$898.814	\$506.659	\$863.292	98%	\$592.729	66%			\$573.264	64%

NOTE: EXPENDITURES ARE CUMULATIVE THROUGH JUNE 2007.
 (1) BILLED EXPENDITURES IN EXCESS OF FUNDS AVAILABILITY ARE TEMPORARILY FUNDED THROUGH BRIDGE FINANCING

STATUS OF FUNDS ANTICIPATED

FEDERAL SECTION 5309 NEW STARTS: LACMTA received an appropriation of \$59.5M for FY05 and an appropriation of \$78.4M for FY06. LACMTA submitted an FTA grant application of \$100M in May 2007. Grant approval was approved on July 20, 2007. Funds are available for drawdown.

RIP-STATE: LACMTA submitted an allocation request of \$43.8 to the CTC for consideration at their July 2007 meeting. The request was approved and funds will be available for drawdown in September 2007.

STATE TCRP: On March 2005, LACMTA resubmitted a request for approval of a LONP for \$189.2M for Phase 4 (Construction) to the CTC for consideration at the May 2005 CTC Meeting. The CTC approved the LONP for \$166.9M and recently revised their guidelines to allow for partial LONP reimbursement prior to phase completion. LACMTA has requested to liquidate the LONP, with an allocation request of \$166.9M that was considered by the CTC at their September 2006 meeting. The allocation request was approved in February 2007.

FINANCIAL/GRANT STATUS
CONCURRENT NON-FFGA PROJECT ACTIVITIES

JULY 2007

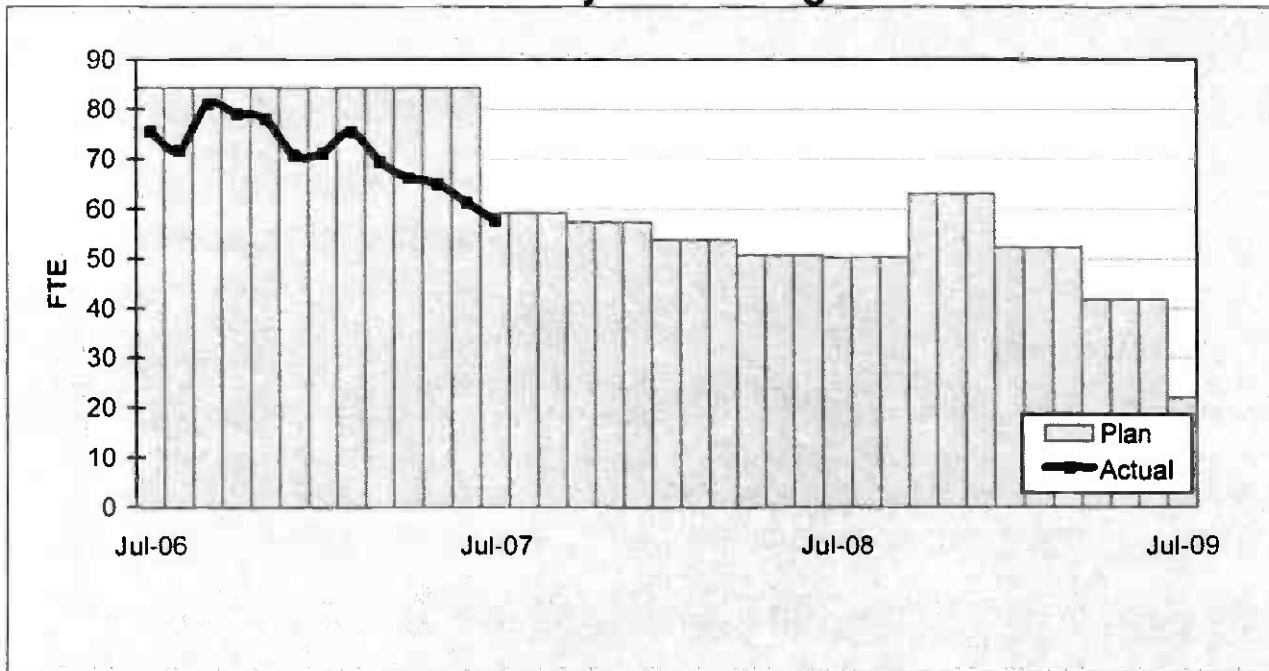
STATUS OF FUNDS BY SOURCE

SOURCE	(A) APPROVED BUDGET	(B) TOTAL FUNDS ANTICIPATED (1)	(C) TOTAL FUNDS AVAILABLE	(D) COMMITMENTS \$	(D/B) %	(E) EXPENDITURES \$	(E/B) %	(F) BILLED TO FUNDING SOURCE \$	(F/B) %
PROP C 40%	\$14,000	\$14,000	\$14,000	\$14,000	100%	\$6,144	44%	\$4,920	35%
PROP C 10%	\$4,000	\$4,000	\$4,000						
STATE TCR	\$0,000	\$24,086	\$24,086	\$18,639	77%	\$2,381	10%	\$2,381	10%
TOTAL	\$18,000	\$42,086	\$42,086	\$32,639	78%	\$8,525	20%	\$7,301	17%

NOTE: EXPENDITURES ARE CUMULATIVE THROUGH JUNE 2007

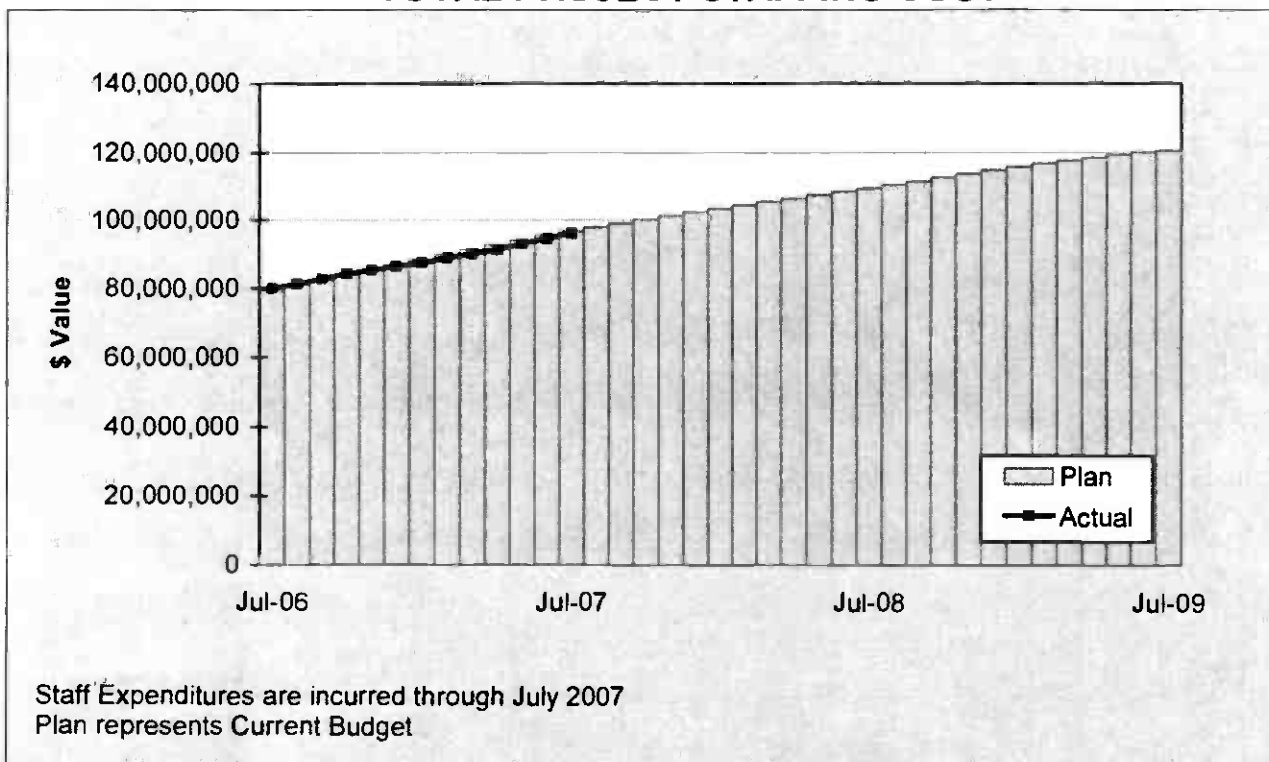
STAFFING STATUS

Total Project Staffing - FTES



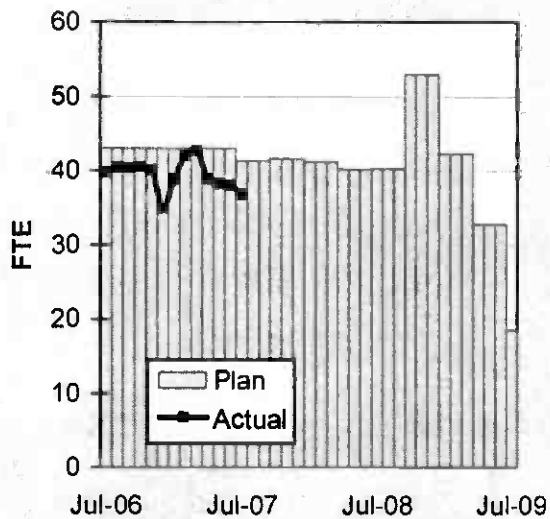
STAFFING STATUS

TOTAL PROJECT STAFFING COST

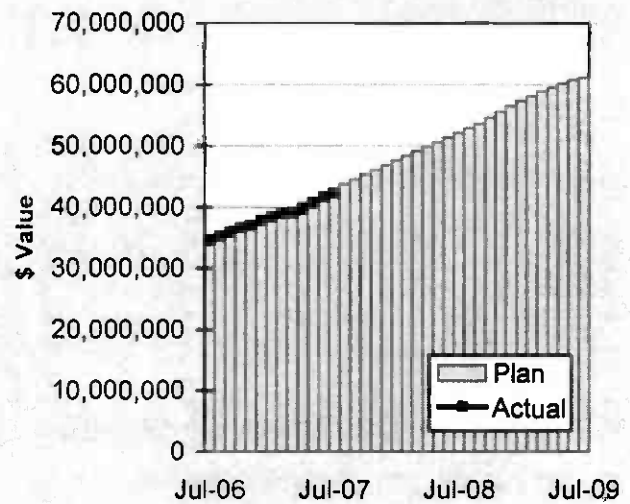


STAFFING STATUS

DIRECT AGENCY - FTES

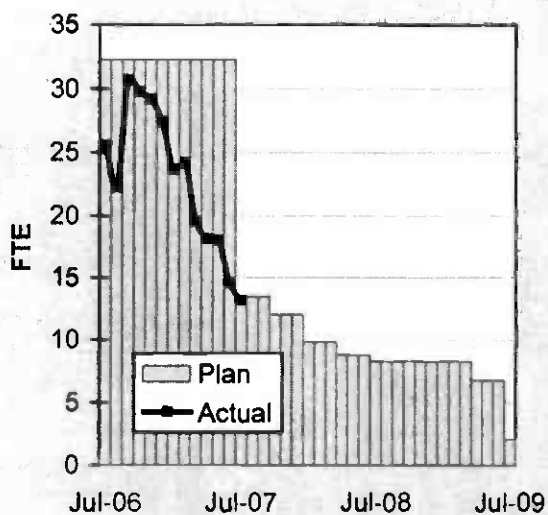


DIRECT AGENCY - COST

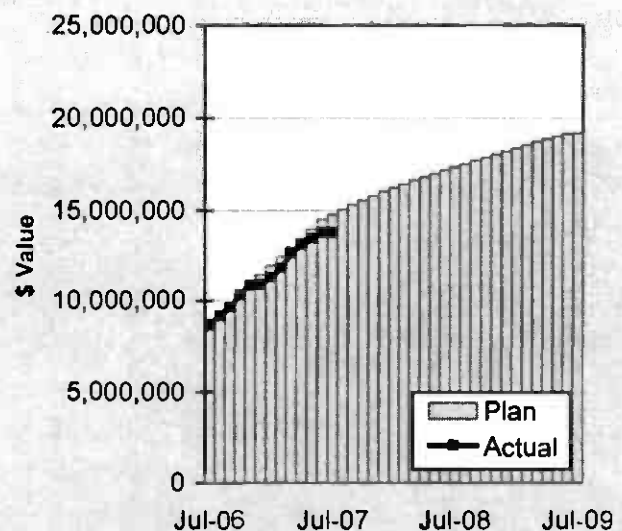


Staff Expenditures are incurred through July 2007
Plan represents Current Budget

CONSTRUCTION MGMT - FTES



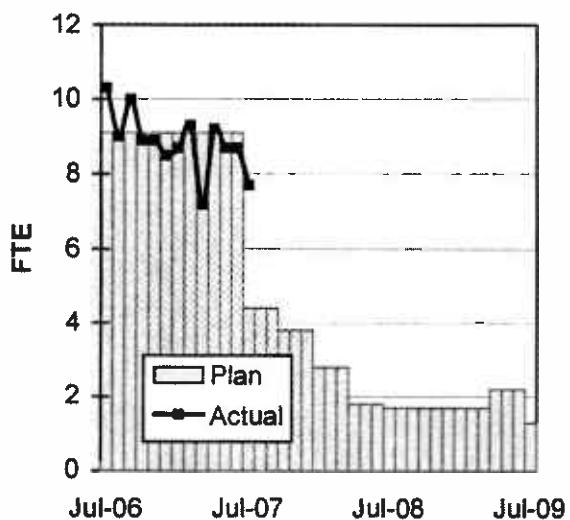
CONSTRUCTION MGMT - COST



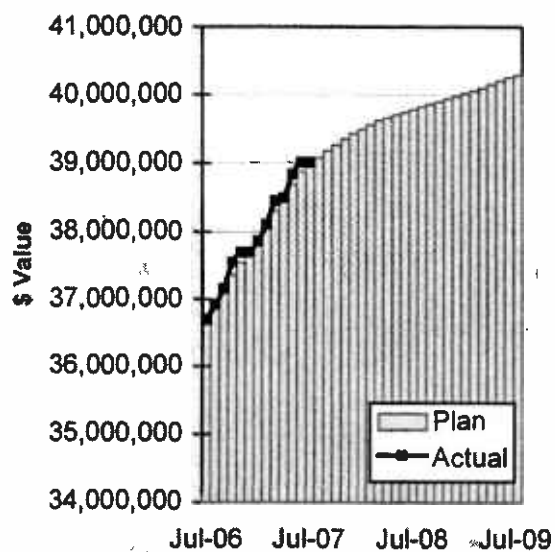
Staff Expenditures are incurred through July 2007
Plan represents Current Budget

STAFFING STATUS

ELRT PARTNERS - FTES



ELRT PARTNERS - COST



Staff Expenditures are incurred through July 2007
Plan represents Current Budget

REAL ESTATE STATUS

- For C0803, the tunnel portion of the alignment, 40 parcels were required for acquisition (11 full takes, 4 partial takes, 20 sub-surface easements/temporary construction easements, 3 sub-surface easements/building protection, and 2 building protections).
- For C0803, the at-grade portion of the alignment, 27 parcels were required for acquisition (17 full takes, 9 partial takes and 1 surface easement). Nine parcels were required for the LAUSD Ramona Opportunity High School site reconfiguration.
- For C0802, 2 parcels were required (1 surface easement and 1 full take parcel).
- Two Encroachment Permits were obtained from Caltrans for the C0803-Tunnel. Three street closures were obtained from the City of LA.

REAL ESTATE ACQUISITION SCHEDULE SUMMARY

<i>Number of Parcels</i>	Required	Acquired	On Schedule	Behind Schedule	
				Number	Avg. Calendar Days
This Period	69	69	0	0	0
Last Period	69	69	0	0	0

**REAL ESTATE STATUS TO DATE BY CONTRACT
ACQUISITION PHASE**

CONTRACT NO.	Number of Parcels (A+B+C+D+E)	Agreements Signed (A)	Parcels in Condemnation (B)	Under Negotiation (C)	In Appraisal Process (D)	Inactive Parcels (E)	Parcels Available
C0803-Tunnel	40	40	0	0	0	0	40
C0803-At-Grade	27	27	0	0	0	0	27
C0802	2	2	0	0	0	0	2
TOTAL	69	69	0	0	0	0	69
LAST PERIOD	69	69	0	0	0	0	69

ENVIRONMENTAL STATUS

- The Ad Hoc Subcommittee discussed design options for the construction of a memorial near the Chinese Memorial Shrine at Evergreen Cemetery.
- Barrio Planners prepared conceptual drawings of the memorial.

COMMUNITY RELATIONS STATUS

- Distributed nine Construction Notices which reached approximately 43,500 residences/businesses. Activities include: traffic switches and re-striping, sewer line construction, street closures and trackway construction.
- Held monthly Ad-Hoc Sub Committee Meeting, Executive Review Advisory Committee Meeting and Review Advisory Committee Meeting.
- Supported Girls Today Women Tomorrow event.
- Met with 60 residents/business owners to coordinate construction activities.
- Delivered five "Open During Construction" banners.

QUALITY ASSURANCE STATUS

- Quality Management continues with reviews of contractor's monthly Asphalt, Concrete Compressive Strength and Soils Compaction reports - areas of concern, if any, are coordinated to resolution with the onsite lab representative.
- The results of field surveillance activities continue to be identified in Weekly Surveillance Reports.
- Fabrication of OCS Poles have been the subject of attention based upon weld related concerns. Many OCS poles are being subjected to additional nondestructive examination by Metro's subcontracted independent laboratory.
- Fabrication of station canopies have been the subject of concern. Metro has assigned an independent test laboratory to monitor the work.

SAFETY STATUS

- Participated in weekly progress meetings with Construction Managers and ELRTC management personnel to discuss safety related issues and construction schedule.
- Conducted Safety Orientation for Third Party.
- Monitored construction activities on a daily basis including weekends to ensure contractor compliance with Contract Specification.
- ELRTC and their subcontractors reported zero incidents and 80,345 work hours for the month of July 2007. A total of twenty-three (23) recordable incidents have occurred Project to Date. Total Project to Date work hours are 2,131,175. Injury Rates for Recordable incidents are 2.1; well below the National Average of 5.6.

ART DEVELOPMENT STATUS

- Coordination meetings with Construction for artwork fabrication/installation schedules for eight stations.

Metro Gold Line Eastside Extension
Monthly Project Status Report

July 2007

THIRD PARTY AGREEMENT STATUS

Third Party	Type of Agreement	Forecast Execution Date	Required Need Date	Status/ Comments
City of Los Angeles	Amendment	Completed	N/A	Executed December 2002.
Los Angeles County	Master	Completed	N/A	Executed April 2003.
Caltrans (All Projects)	Master	Completed	N/A	Executed July 2003.
Caltrans (101)	Design	Completed	N/A	Executed July 2003.
Caltrans (101)	Construction	Completed	N/A	Executed September 2003.
Caltrans (101)	Maintenance	12/08	Project Completion	The initial negotiation meeting was held on 1/9/03. LACMTA received a draft from Caltrans on 1/22/04. LACMTA reviewed and submitted the agreement to Caltrans on 2/10/04. A follow up call was made on 10/20/05 but no response to date.
LADWP (Water/Power)	Amendment	8/07	*6/04	LACMTA Management, County Counsel, and LACMTA Board staff have participated in meetings with DWP to complete negotiations, since the "Deadline and Delay" clause is not acceptable to LADWP. Alternative language was forwarded to LACMTA Management and County Counsel for review on 10/7/05. LACMTA CEO is to speak with LADWP CEO.
So. Cal. Edison Co.	Amendment	N/A	N/A	SCE Executive Legal Branch stated on 2/25/05 they have no intention of signing agreement.
The Gas Company	Amendment	Completed	N/A	Executed May 2005.
SBC/AT & T	Amendment	Completed	N/A	Executed May 2005. SBC has been acquired by AT&T and has formed a new corporation TCM for work in Southern California. A new agreement has been negotiated with Metro and TCM, which was approved by the Metro Board in April. The new agreement mirrors the SBC agreement except for some minor changes in the insurance language.
Adelphia Cable Company	Amendment	8/07	*6/04	LACMTA received a draft from Adelphia for review. LACMTA Management and County Counsel reviewed the amendment and returned the document to Adelphia with comments. Adelphia's Legal Department is reviewing the document and follow-up calls were made on 10/20/05 and 11/16/05.
Calif Wtr Service Co	Master	Completed	N/A	Executed May 2005.
L.A. County Sanitation Districts	N/A	N/A	N/A	In a letter dated 3/26/03, the Sanitation District stated that there is not a need for an agreement since there are no relocations related to their facilities. The Sanitation District will review submittals related to encasements of their facilities on Indiana Street.
MCI Worldcom	Amendment	Completed	N/A	Executed May 2005.
Metropolitan Wtr Dist	Amendment	Completed	N/A	Executed May 2003.

THIRD PARTY AGREEMENT STATUS

Third Party	Type of Agreement	Forecast Execution Date	Required Need Date	Status/ Comments
Verizon Wireless	Amendment	8/07	*6/04	The revised draft amendment was hand delivered to Verizon on 11/19/03 and an electronic copy was sent to them 2/19/04. Verizon did respond with comments, which were reflected in a revised agreement sent 4/05. Verizon legal is completing final review. Follow up calls were made on 10/20/05 and 11/16/05. Verizon has now joined MCI and once the legal work is complete in late February 2006, LACMTA may be able to use the MCI Agreement for Verizon work. E-mailed MCI Agreement to Verizon Representative for consideration as overall agreement covering Verizon and MCI as the new Verizon.
GST	N/A			Facilities are not impacted by Eastside Construction
Exxon Mobil Oil Company	N/A			Facilities are not impacted by Eastside Construction
Pacific Pipeline Company	N/A			Facilities are not impacted by Eastside Construction
Kinder Morgan Pipeline Company	N/A			Facilities are not impacted by Eastside Construction
Tosco Refining Company	N/A			Facilities are not impacted by Eastside Construction
Equilon Pipeline Company	N/A			Facilities are not impacted by Eastside Construction
Level 3 Communications	N/A			Facilities are not impacted by Eastside Construction
Broadwing Communications	N/A			Facilities are not impacted by Eastside Construction
Eller Media	N/A			Facilities are not impacted by Eastside Construction

* Work will be performed under the current MCA and will not delay ongoing work.

**Metro Gold Line Eastside Extension
Monthly Project Status Report**

July 2007

CPUC CROSSING SUMMARY

Batch	Application Status	Initial Package Submittal to MTA	Field Diagnostic Meeting	Revised Drawings Due to MTA	Draft Write-up to MTA	Draft Package Submittal to PUC Local office and Agencies	Final Package Submittal to PUC	CPUC Final Approval
1	Complete	8/5/02	8/12/02	8/28/02	9/6/02	9/6/02	9/6/2002	Approved
2	Complete	10/4/02	10/11/02	10/25/02	11/6/02	11/22/02	11/22/2002	Approved
3	Complete	2/6/03	2/27/03	3/10/03	1/27/03	4/11/02	4/18/2003	Approved
4	Complete	12/14/02	1/15/03	1/28/03	11/13/02	5/5/03	6/18/2003	Approved
4A	Complete	1/24/03	1/29/03	3/14/03	2/7/03	9/5/03	1/23/2004	Approved
6	Complete	3/19/03	3/26/03	6/20/03	2/7/03	9/5/03	9/12/2003	Approved
7	Complete	12/11/02	12/18/02	3/31/03	2/7/03	5/5/03	7/25/2003	Approved
8	Complete	11/26/02	12/18/02	3/31/03	11/15/02	6/8/03	5/21/2004	Approved
9	Complete	1/20/03	1/29/03	3/31/03	11/22/02	6/29/03	9/12/2003	Approved
10	Complete	12/11/03	12/18/02	3/10/03	11/22/02	5/5/03	8/29/2003	Approved
11	Complete	2/13/03	2/27/03	4/18/03	12/5/02	6/6/03	8/29/2003	Approved
12	Complete	2/13/03	2/27/03	4/18/03	12/13/02	5/6/03	9/5/2003	Approved
13	Complete	2/6/03	2/20/03	4/18/03	2/21/03	6/6/03	9/1/2004	Approved
14	Complete	1/6/03	1/15/03	3/14/03	11/12/02	6/29/03	10/30/2003	Approved
15	Complete	2/26/03	N/A	N/A	2/21/03	6/6/03	8/29/2003	Approved
16	Complete	2/20/03	N/A	N/A	2/25/03	6/6/03	8/29/2003	Approved
17	Complete	1/6/03	1/15/03	N/A	2/14/03	5/5/03	6/13/2003	Approved
18	Complete	1/6/03	1/15/03	3/20/03	2/14/03	5/5/03	6/13/2003	Approved
Agency Responsible		ELRTP	MTA	ELRP	ELRTP	MTA	MTA	

Batch No. 5 has been removed, as the Midway Yard will be utilized.

SHADED AREAS REPRESENTS COMPLETION

All applications are approved.

Batch		Batch Descriptions	
1	1st / Alameda	10	3rd / Ford
2	Alameda / Temple		3rd / McDonnell
	1st / Hewitt		3rd / Arizona
	Ped Crossings @ 1st / Alameda Station	11	3rd / Mednik
3	1st / Vignes		3rd / Civic Center Drive
4	1st / Lorena		3rd / La Verne
4A	Indiana/1st	12	3rd / Driveways to Sheriff's Station
	Indiana/3rd		3rd / Wood / Via Corona / Pomona / Beverly
	Indiana Pedestrian Crossing	13	3rd / 60 Fwy WB Connector
6	1st / Mission		3rd / 60 Fwy over ELRT
	1st / Anderson		3rd / 710 Fwy SW Connector
	1st / Clarence		3rd / Bridge over 710 Fwy
	1st / Utah		3rd / 710 Fwy SE Connector
	1st/Gless Pedestrian Crossing	14	Union Station Service Road
7	3rd / Rowan	15	1st / Santa Fe
			1st / Myers
8	3rd / Gage	16	1st / MTA
	3rd / 60 Fwy WB Ramps		1st / BNSF
	3rd /Downey		1st / Union Pacific

**Metro Gold Line Eastside Extension
Monthly Project Status Report**

July 2007

CONTRACT C0802 STATUS

Description: 101 Freeway Bridge Overcrossing Contractor: Brutoco Engineering & Construction		Contract No. C0802 Status as of: July 27, 2007																													
Progress/Work Completed: * Bridge work was completed in March 2007 Areas of Concern: * None		Major Activities (In Progress): * None Major Activities Next Period: * None																													
Schedule Summary: Date of Award: 09/07/04 Notice to Proceed: 09/22/04 Original Contract Duration: 700 CD Current Contract Duration: 775 CD Elapsed Time from NTP: 904 CD * * Note: Elapsed time to Milestone # 1 completion		<table border="1" style="width: 100%; border-collapse: collapse;"> <thead> <tr> <th></th> <th style="text-align: center;">Original Contract Dates</th> <th style="text-align: center;">Time Extension</th> <th style="text-align: center;">Current Contract</th> <th style="text-align: center;">Forecast</th> <th style="text-align: center;">Variance CDs</th> </tr> </thead> <tbody> <tr> <td>Notice to Proceed</td> <td style="text-align: center;">09/22/04</td> <td style="text-align: center;">0</td> <td style="text-align: center;">09/22/04</td> <td style="text-align: center;">09/22/04</td> <td style="text-align: center;">0</td> </tr> <tr> <td>Milestone 1 - Complete Abutment No. 10</td> <td style="text-align: center;">06/26/06</td> <td style="text-align: center;">49</td> <td style="text-align: center;">08/14/06</td> <td style="text-align: center;">03/15/07</td> <td style="text-align: center;">-213</td> </tr> <tr> <td>Milestone 2- Complete All Work Without Plant Establishment</td> <td style="text-align: center;">09/23/06</td> <td style="text-align: center;">75</td> <td style="text-align: center;">11/06/06</td> <td style="text-align: center;">08/06/07</td> <td style="text-align: center;">-273</td> </tr> </tbody> </table>							Original Contract Dates	Time Extension	Current Contract	Forecast	Variance CDs	Notice to Proceed	09/22/04	0	09/22/04	09/22/04	0	Milestone 1 - Complete Abutment No. 10	06/26/06	49	08/14/06	03/15/07	-213	Milestone 2- Complete All Work Without Plant Establishment	09/23/06	75	11/06/06	08/06/07	-273
	Original Contract Dates	Time Extension	Current Contract	Forecast	Variance CDs																										
Notice to Proceed	09/22/04	0	09/22/04	09/22/04	0																										
Milestone 1 - Complete Abutment No. 10	06/26/06	49	08/14/06	03/15/07	-213																										
Milestone 2- Complete All Work Without Plant Establishment	09/23/06	75	11/06/06	08/06/07	-273																										
Physical Percent Complete: Physical completion ** as of this reporting period is: 100.00% ** Note: Physical completion assessment reflects work completed and invoice amount shown in Caltrans Monthly Progress/Expense Report No. 30.		<table style="width: 100%;"> <tr> <td style="width: 80%;">Cost Summary:</td> <td style="width: 20%; text-align: right;">\$ In millions</td> </tr> <tr> <td>1. Award Value:</td> <td style="text-align: right;">6.42</td> </tr> <tr> <td>2. Executed Modifications:</td> <td style="text-align: right;">0.00</td> </tr> <tr> <td>3. Approved Change Orders:</td> <td style="text-align: right;">0.00</td> </tr> <tr> <td>4. Current Contract Value (1+2+3):</td> <td style="text-align: right;">6.42</td> </tr> <tr> <td>5. Incurred Cost:</td> <td style="text-align: right;">6.37</td> </tr> </table>						Cost Summary:	\$ In millions	1. Award Value:	6.42	2. Executed Modifications:	0.00	3. Approved Change Orders:	0.00	4. Current Contract Value (1+2+3):	6.42	5. Incurred Cost:	6.37												
Cost Summary:	\$ In millions																														
1. Award Value:	6.42																														
2. Executed Modifications:	0.00																														
3. Approved Change Orders:	0.00																														
4. Current Contract Value (1+2+3):	6.42																														
5. Incurred Cost:	6.37																														

Metro Gold Line Eastside Extension
Monthly Project Status Report

July 2007

CONTRACT C0803 STATUS

Description: Tunnel, Stations, Trackwork & Systems Contractor: Eastside LRT Constructors	Contract No. C0803 Status as of: July 27, 2007																																									
Progress/Work Completed: <ul style="list-style-type: none">Completed installation of walkway on the east bound tunnel between Soto Station and East PortalCompleted wet stand pipe in the west bound tunnelStarted Bodie Shaft tie-back removal at Mariachi Plaza StationCompleted Mariachi Plaza Station track level interior walls and columns, and shoring for remaining mezzanine slab sectionsStarted additional shoring under the mezzanine slab at Mariachi Plaza StationPoured Soto Station east hammerhead invert slab and completed HDPE water shield for exterior walls at track levelCompleted divider interior walls at West PortalPoured bridge deck on 3rd Street & 710 Freeway overcrossingStarted guideway construction between Alameda and VignesStarted Indiana Station constructionCompleted track installation at the intersections of 3rd Street and Arizona, 3rd Street and Woods, and 3rd Street and EasternCompleted shared drive and temporary parking lot at Ramona Opportunity High School (ROHS)Started construction of TPS-04 at 3rd Street and Sunol Rd.Reviewed AFC design package for Traction Power Areas of Concern: None	Major Activities (In Progress): <ul style="list-style-type: none">Tunneling contractor demobilizationElectrical raceway installation in both tunnelsRebar and forms for exterior wall extensions at West PortalMariachi Plaza Station mezzanine slab rebar, forms and concreting, and station entrance excavation and support systemSoto Station exterior walls at track levelExcavation at Pico/Aliso and Indiana StationsConstruct East Los Angeles Civic Center and Maravilla StationsStreet improvements-Alameda & Temple and Alameda & 1st St.Segments 2A and 2B guideway constructionInstall water line in Segment 4A along 1st Street3rd Street widening (south side) along Segment 5Column steel casings at 3rd Street & 710 Frwy. overcrossingSegments 5, 6 and 7 guideway and rail construction Major Activities Next Period: <ul style="list-style-type: none">West Portal roof slabMariachi Plaza Station backfill at the Bodie shaft and station emergency exit # 1 piles and excavationMariachi Plaza Station mezzanine level exterior wallsSoto Station exterior and interior walls at track levelEast Portal invert slab HDPE and mud mat at hammerheadMaravilla and Indiana Stations TC&C room constructionSegments 2A, 2B, 5 & 6 guideway and rail constructionStreet improvements - Segment 4A between Lorena & IndianaSet up rail welding shop within Segment 2AComplete MSE wall south of the C0802 Bridge-State Hwy. 101Construct temporary baggage handling road at Union StationSegment 5 U-channel barrier walls																																									
Schedule Summary: Date of Award: 06/01/04 Notice to Proceed: 07/01/04 Original Contract Duration: 1795 CD Current Contract Duration: 1800 CD Elapsed Time from NTP: 1122 CD Option D Contract duration 90 CD Complete	<table><tr><td></td><td>Original Contract Dates</td><td>Time Extension</td><td>Current Contract</td><td>Forecast</td><td>Variance CDs</td></tr><tr><td>Notice to Proceed</td><td>07/01/04</td><td>0</td><td>07/01/04</td><td>07/01/04</td><td>0</td></tr><tr><td>Milestone 1 - Contract Completion. Complete all systems integration testing and ready for MTA's pre-revenue operation testing.</td><td>12/31/08</td><td>7</td><td>01/07/09</td><td>01/07/09</td><td>0</td></tr><tr><td>Milestone 3 - Complete Universal Fare System Equipment area.</td><td>04/30/08</td><td>5</td><td>05/05/08</td><td>05/05/08</td><td>0</td></tr><tr><td>Milestone 5 - Vacate all staging areas and turn over to MTA.</td><td>05/30/09</td><td>5</td><td>06/04/09</td><td>06/04/09</td><td>0</td></tr><tr><td>Milestone 6 - Complete design and construction of Option D work.</td><td>09/28/04</td><td>0</td><td>09/28/04</td><td>09/28/04</td><td>0</td></tr></table>							Original Contract Dates	Time Extension	Current Contract	Forecast	Variance CDs	Notice to Proceed	07/01/04	0	07/01/04	07/01/04	0	Milestone 1 - Contract Completion. Complete all systems integration testing and ready for MTA's pre-revenue operation testing.	12/31/08	7	01/07/09	01/07/09	0	Milestone 3 - Complete Universal Fare System Equipment area.	04/30/08	5	05/05/08	05/05/08	0	Milestone 5 - Vacate all staging areas and turn over to MTA.	05/30/09	5	06/04/09	06/04/09	0	Milestone 6 - Complete design and construction of Option D work.	09/28/04	0	09/28/04	09/28/04	0
	Original Contract Dates	Time Extension	Current Contract	Forecast	Variance CDs																																					
Notice to Proceed	07/01/04	0	07/01/04	07/01/04	0																																					
Milestone 1 - Contract Completion. Complete all systems integration testing and ready for MTA's pre-revenue operation testing.	12/31/08	7	01/07/09	01/07/09	0																																					
Milestone 3 - Complete Universal Fare System Equipment area.	04/30/08	5	05/05/08	05/05/08	0																																					
Milestone 5 - Vacate all staging areas and turn over to MTA.	05/30/09	5	06/04/09	06/04/09	0																																					
Milestone 6 - Complete design and construction of Option D work.	09/28/04	0	09/28/04	09/28/04	0																																					
Physical Percent Complete: Physical completion * as of this reporting period is: 58.81% * Note: Physical completion assessment reflects work completed and work in progress.	Cost Summary: \$ In millions <table><tr><td>1. Award Value:</td><td>600.45</td></tr><tr><td>2. Executed Modifications:</td><td>9.12</td></tr><tr><td>3. Approved Change Orders:</td><td>0.19</td></tr><tr><td>4. Current Contract Value (1+2+3):</td><td>609.76</td></tr><tr><td>5. Incurred Cost:</td><td>404.64</td></tr></table>						1. Award Value:	600.45	2. Executed Modifications:	9.12	3. Approved Change Orders:	0.19	4. Current Contract Value (1+2+3):	609.76	5. Incurred Cost:	404.64																										
1. Award Value:	600.45																																									
2. Executed Modifications:	9.12																																									
3. Approved Change Orders:	0.19																																									
4. Current Contract Value (1+2+3):	609.76																																									
5. Incurred Cost:	404.64																																									

CONTRACT E700051F STATUS

Description: 1st Street Bridge Strengthening Contractor: The Griffith Company		Contract No. E700051F Status as of: July 27, 2007					
Progress/Work Completed: <ul style="list-style-type: none"> * Completed removal of abandoned utilities - arch section * Completed demolition of bridge walkway above the LA River and above the railroad right-of-way * Completed Segments 7-9 girder strengthening - west of LA River * Started Segments 4-5 girder strengthening - west of LA River * Started Segments 1-3 girder strengthening - east of LA River * Poured bridge deck concrete - Segments 8 & 9, west of LA River Areas of Concern: <ul style="list-style-type: none"> * None 		Major Activities (In Progress): <ul style="list-style-type: none"> * Reinforced girder rebar - Segments 4 & 5, west of LA River * Pour bridge deck concrete - Segment 7, west of LA River * Reinforced girder rebar Segment 3 - east of LA River * Waffle slab reinforcing steel - arch section * Processing submittals Major Activities Next Period: <ul style="list-style-type: none"> * Complete Segments 5-6 girder strengthening-west of LA River * Complete Segments 1-2 girder strengthening-east of LA River * Girder strengthening Segments 3-4 rebar and forms * Pour bridge deck concrete - Segments 5-7, west of LA River * Soil retaining system - arch section * Waffle slab reinforcing steel and forms - arch section 					
Schedule Summary:			Original Contract Dates	Time Extension	Current Contract	Forecast	Variance CDs
Date of Award: 01/19/07		Notice to Proceed	02/09/07	0	02/06/07	02/06/07	0
Notice to Proceed: 02/06/07		Milestone 1 - Substantial Completion	09/24/07	30	10/24/07	10/24/07	0
Original Contract Duration: 224 CD							
Current Contract Duration: 260 CD							
Elapsed Time from NTP: 171 CD							
Physical Percent Complete:		Cost Summary: \$ In millions					
Physical completion as of 7/15/07: 58.00% *		1. Award Value: * 4.26 2. Executed Modifications: 0.00 3. Approved Change Orders: 0.00 4. Current Contract Value (1+2+3): 4.26 5. Incurred Cost: 2.47					
* As reported by the City of Los Angeles, Department of Contract Administration		* City of Los Angeles					

CONTRACT P2550 STATUS

Description: 2550 Rail Vehicle Program Contractor: AnsaldoBreda, Italy		Contract No. P2550 Status as of: July 27, 2007																																																																							
Progress/Work Completed: 1. Pilot Vehicles vehicle level performance [qualifications] tests completed on 701 & 702. Next action is to transport vehicles to Pittsburg for final configuration upgrade. 2. Vehicle final assembly work is in process. 3. Shipment of foreign and domestic parts for final assembly continue to arrive in Pittsburg, CA. 4. AB shipped production LRV 709 to Metro on July 31, 2007.		Major Activities (In Progress): 1. AnsaldoBreda's manufacturing plants in Pistopia and Naples, Italy continue to prepare carshells and subassemblies for shipment to U.S.A.. 2. Shipment by U.S. flag vessels to U.S.A. in review with MARAD. 3. Production LRV (5) in post arrival recieving and testing . 4. Assembly of 8 truck frames (3 vehical sets) with domestic parts is ongoing in Pittsburg 6. Domestic parts and components are now being direct shipped to Pittsburg, CA 7. FTA-CPUC-METRO visited Pittsburg for technical process review.																																																																							
Areas of Concern: 1. The lack of documentation submittals is improving. Metro approvals for the acceptance testing procedures are submittals received. 2. Metro's contract cash flow consumption is improving. Staff additions at AB are bringing consumption up to date subject to work product approval. 3. Metro continues to press AB to ship multiples of car shells to Pittsburg in order to benefit from shipment economies of scale. 4. Supply chain concerns being addressed by addition of explditers on site Pittsburg and AB Metro facility.		Major Activities Next Period: 1. LRV "pilot vehicles" will be sent to Pittsburg, CA for configuration change. 2.The IPT continues to closely monitor all performance activities. 3. Weekly teleconferences continue to monitor production issues. 4. Nine truck frames (3 LRV sets) are being shipped from Naples Italy for final assembly construction. 5. Three LRVs are in route from Houston to Pittsburg, ETA August 20, 2007 6. IPT evaluating the Contract Options Ordering period execution. 7. METRO-CEO & State Senator to visit Pittsburg, CA, Final																																																																							
Schedule Summary: Date of Award: 04/24/03 Notice to Proceed: 06/06/03 Original Contract Duration: 1470 CD Current Contract Duration: 2075 CD Elapsed Time from NTP: 1516 CD Note: MTA Issued Modification No. 1 to Anskidobreda. Modification No. 1 is a zero-cost, miscellaneous administrative and technical clarification modification. MTA completed Modification No. 2 that reflects the recently granted California Board Of Equalization exemption for State Sales Tax on the Light Rail Vehicles. MTA and AnsaldoBreda agreed to Mod No. 4 which extended the Option One ordering period from April 2006 to April 2008, effective May 14, 2007.		<table><tr><th></th><th>Original Contract Dates</th><th>Assembled</th><th>Current Contract</th><th>Balance Due</th><th>Transferred from FA to Metro</th></tr><tr><td>Notice to Proceed</td><td>6/6/2003A</td><td></td><td></td><td></td><td></td></tr><tr><td>100 Side Wall Sets (A&B)</td><td></td><td>90</td><td>100 SW</td><td>10SW</td><td></td></tr><tr><td>150 Truck Assemblies</td><td></td><td>80</td><td>150 TA</td><td>90 TA</td><td></td></tr><tr><td>LRV Pilot Vehicles Delivered to Commissioning Test Site</td><td></td><td>2</td><td>2 LRV</td><td>0 LRV</td><td></td></tr><tr><td>LRV Pilot Vehicles Returned to Final Assembly Site</td><td></td><td>0</td><td>2 LRV</td><td>2 LRV</td><td></td></tr><tr><td>LRVs Delivered to Final Assembly Facility</td><td></td><td>14</td><td>50 LRV</td><td>36 LRV</td><td>5 LRV</td></tr><tr><td>LRVs currently in work at Final Assembly Facility</td><td></td><td>11</td><td>50 LRV</td><td></td><td></td></tr><tr><td>LRV Delivered to Commissioning Site- LACMTA</td><td></td><td>5</td><td>50 LRV</td><td>45 LRV</td><td></td></tr><tr><td>LRV Accepted for Revenue Service by LACMTA</td><td></td><td>0</td><td>50 LRV</td><td>50 LRV</td><td></td></tr><tr><td></td><td></td><td></td><td></td><td></td><td></td></tr></table>							Original Contract Dates	Assembled	Current Contract	Balance Due	Transferred from FA to Metro	Notice to Proceed	6/6/2003A					100 Side Wall Sets (A&B)		90	100 SW	10SW		150 Truck Assemblies		80	150 TA	90 TA		LRV Pilot Vehicles Delivered to Commissioning Test Site		2	2 LRV	0 LRV		LRV Pilot Vehicles Returned to Final Assembly Site		0	2 LRV	2 LRV		LRVs Delivered to Final Assembly Facility		14	50 LRV	36 LRV	5 LRV	LRVs currently in work at Final Assembly Facility		11	50 LRV			LRV Delivered to Commissioning Site- LACMTA		5	50 LRV	45 LRV		LRV Accepted for Revenue Service by LACMTA		0	50 LRV	50 LRV							
	Original Contract Dates	Assembled	Current Contract	Balance Due	Transferred from FA to Metro																																																																				
Notice to Proceed	6/6/2003A																																																																								
100 Side Wall Sets (A&B)		90	100 SW	10SW																																																																					
150 Truck Assemblies		80	150 TA	90 TA																																																																					
LRV Pilot Vehicles Delivered to Commissioning Test Site		2	2 LRV	0 LRV																																																																					
LRV Pilot Vehicles Returned to Final Assembly Site		0	2 LRV	2 LRV																																																																					
LRVs Delivered to Final Assembly Facility		14	50 LRV	36 LRV	5 LRV																																																																				
LRVs currently in work at Final Assembly Facility		11	50 LRV																																																																						
LRV Delivered to Commissioning Site- LACMTA		5	50 LRV	45 LRV																																																																					
LRV Accepted for Revenue Service by LACMTA		0	50 LRV	50 LRV																																																																					
Physical Percent Complete: Physical Work completion* as of July 2007 is 83.35% Percent Work Product Invoiced** through July 2007 is 38.66% * Note: Physical Work completion assessment reflects work completed and work in progress. **Reflects percent of Contract price invoiced and paid to date.		Cost Summary: \$ In millions 1. Award Value: Pasadena (Proj. No.: 800151) 126.99 Eastside Ext. (Proj. No.: 800088) 31.75 Total Award Value 158.74 2 Executed Modifications 0.00 3 Approved Change Orders: 0.00 4 Current Contract Value (1 + 2 + 3): 158.74 5 Payments or Invoices in process: 64.26																																																																							

CONSTRUCTION PHOTOGRAPHS



Construction of OCS pole foundations.



1st Street Bridge girder strengthening.

CONSTRUCTION PHOTOGRAPHS



Construction of Mechanically Stabilized Earth (MSE) wall at the US 101 Freeway LRT Bridge.



View of the north end of the Little Tokyo Station.

CONSTRUCTION PHOTOGRAPHS



Construction of pedestrian access ramp at Atlantic Station.



Construction of the mezzanine deck at the Boyle/Heights Mariachi/Plaza Station.

CONSTRUCTION PHOTOGRAPHS



Construction of the south wall within Soto Station.



West hammer head section at Soto Station.

CONSTRUCTION PHOTOGRAPHS



Ductbank installation along guideway within Segment 6.

APPENDIX

COST AND BUDGET TERMINOLOGY

ESTIMATED PROJECT COSTS: Estimated project costs are based upon the current project cost estimates that are produced during the engineering design phase.

COMMITMENTS: The total of actual contract awards, executed change orders or amendments, approved work orders of Master Cooperative Agreements, offers accepted for purchase of real estate, and other LACMTA actions that will result in specific expenditures at a future time.

INCURRED COST: The total value of work performed to date of services received, and acquired materials or properties.

EXPENDITURES: The total dollar amount of checks written by the LACMTA's Accounting department for contractor or consultant invoices, third party invoices, staff salaries, and closing payments for escrow accounts that is reported in the LACMTA's Financial Information System (FIS).

CONSTRUCTION: Includes guideways, yards and shops, systems equipment, stations, and vehicles.

PROFESSIONAL SERVICES: Includes general engineering, construction management services, consultant design support services during construction, legal counsel, and agency (LACMTA staff) costs.

RIGHT-OF-WAY: Includes real estate appraisals, purchase cost of parcels, easements, right-of-entry permits, escrow fees, and tenant relocation.

UTILITY/AGENCY FORCE ACCOUNT: Includes work by outside agencies and utilities in design coordination and review.

CONTINGENCY: A fund established at the beginning of a project to provide for anticipated but unknown additional costs that may arise during the course of the project.

SPECIAL CONDITIONS: Includes utilities relocation, environmental compliance and mitigation, master cooperative agreements, insurance program, artwork, systems integration testing and pre-revenue operations.

APPENDIX
LIST OF ACRONYMS

AFE	Authorization For Expenditure
ATC	Automatic Train Control
CADD	Computer Aided Drafting and Design
CALTRANS	California Department of Transportation
CD	Calendar Day
CM	Construction Manager
CMAQ	Congestion Mitigation Air Quality
CN	Change Notice
CO	Change Order
CNFPA	Concurrent Non-FFGA Project Activities
CPM	Critical Path Method
CPUC	California Public Utilities Commission
CR	Camera Ready
CTC	California Transportation Commission
CUD	Contract Unit Description
DB	Design/Build
DBB	Design/Bid/Build
DD	Design Development
DOT	Department of Transportation
DWP	Department of Water and Power
EIR	Environmental Impact Report
EIS	Environmental Impact Statement
EPBM	Earth Pressure Balance Machine
ESP	Eastside LRT Partners
FAR	Federal Acquisition Regulation
FD	Final Design
FEIS	Final Environmental Impact Statement
FEIR	Final Environmental Impact Report
FFGA	Full Funding Grant Agreement
FIS	Financial Information System
FSEIR	Final Supplemental Environmental Impact Report
FSEIS	Final Supplemental Environmental Impact Statement
FTA	Federal Transit Administration
FTE	Full Time Equivalent
GDSR	Geotechnical Design Summary Report
IFB	Invitation for Bid
IPO	Integrated Project Office
JV	Joint Venture
LA	Los Angeles
LABOE	Los Angeles Bureau of Engineering
LACFCD	Los Angeles County Flood Control District
LACMTA	Los Angeles County Metropolitan Transportation Authority
LADOT	Los Angeles Department of Transportation

APPENDIX
LIST OF ACRONYMS (Continued)

LADPW	Los Angeles Department of Public Works
LADWP	Los Angeles Department of Water and Power
LAUSD	Los Angeles Unified School District
LNTF	Limited Notice To Proceed
LONP	Letter Of No Prejudice
LRT	Light Rail Transit
LRTP	Long Range Transportation Plan
LRV	Light Rail Vehicle
MIS	Major Investment Study
MPSR	Monthly Project Status Report
N/A	Not Applicable
NEPA	National Environmental Protection Act
NPDES	National Pollution Discharge Elimination System
NTE	Not to Exceed
NTP	Notice To Proceed
OCIP	Owner-Controlled Insurance Program
P3	Primavera Project Planner® (scheduling software)
PC	Project Control
PE	Preliminary Engineering
PEER	Permit Engineering Evaluation Report
PGL	Pasadena Gold Line
PIP	Project Implementation Plan
PM	Project Manager
PMA	Project Management Assistance
PMIP	Project Management Implementation Plan
PMOC	Project Management Oversight Consultant
PMP	Project Management Plan (manual)
P&P	Policies & Procedures
PR	Project Report
PSR	Project Study Report
QA	Quality Assurance
QAR	Quality Assurance Report
QC	Quality Control
QPSR	Quarterly Project Status Report
RAC	Review Advisory Committee
RAG	Rail Activation Group
RFC	Request For Change
RFP	Request For Proposal
ROD	Record Of Decision
ROD	Revenue Operations Date
ROM	Rough Order of Magnitude

APPENDIX
LIST OF ACRONYMS (Continued)

ROW	Right-Of-Way
SCAQMD	Southern California Air Quality Management District
SCE	Southern California Edison
SCRRA	Southern California Regional Rail Authority
SHA	State Highway Account
SHPO	State Historic Preservation Office
SIT	System Integration Testing
SOV	Schedule Of Value
SOW	Statement Of Work
SP	Special Provision
STIP	State Transportation Improvement Program
STP	Surface Transportation Program
TBD	To Be Determined
TBM	Tunnel Boring Machine
TCRP	Traffic Congestion Relief Program
TPSS	Traction Power Substation
TRACS	Transit Automatic Control System
UFS	Universal Fare System
USDOT	U.S. Department Of Transportation
VE	Value Engineering
WBS	Work Breakdown Structure
WP	Work Package