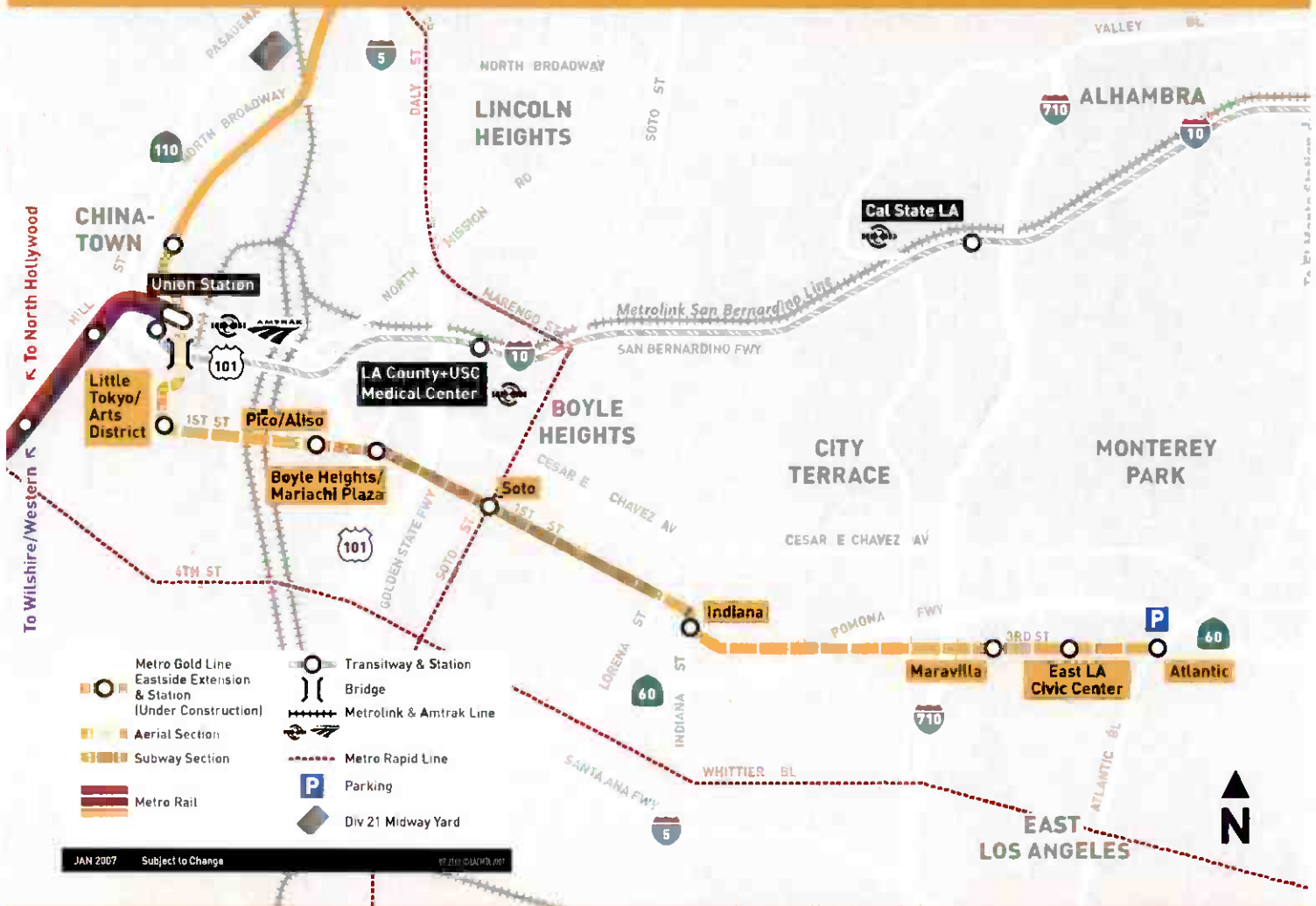


# Metro Gold Line Eastside Extension

November 2007



# **METRO GOLD LINE EASTSIDE EXTENSION**

## **MONTHLY PROJECT STATUS REPORT**

THE PREPARATION OF THIS DOCUMENT HAS BEEN FINANCED IN PART THROUGH A GRANT FROM THE U. S. DEPARTMENT OF TRANSPORTATION, FEDERAL TRANSIT ADMINISTRATION (FTA), UNDER THE FEDERAL TRANSIT ACT OF 1964, AS AMENDED, AND FUNDS FROM THE STATE OF CALIFORNIA.

**NOVEMBER 2007**

## **TABLE OF CONTENTS**

	Page No.
Project Overview & Status.....	1-4
Management Issues.....	4
Project Status	
• Project Scope.....	5
• Schedule	
○ Key Milestones Six-Month Lookahead .....	6
○ Project Master Schedule Critical Path.....	7-11
○ Critical Path Narrative.....	12
• Project Cost Status.....	13-14
• Financial/Grant Status.....	15-16
• Staffing.....	17-19
• Real Estate.....	20
• Environmental.....	21
• Community Relations.....	21
• Quality Assurance.....	22
• Safety.....	22
• Art Development.....	22
• Third Party.....	23-24
• CPUC Crossing.....	25
Contract C0802 Status .....	26
Contract C0803 Status .....	27
Contract E700051F Status.....	28
Contract P2550 Status .....	29
Construction Photographs .....	30-32
Appendices.....	33-36

## **PROJECT OVERVIEW & STATUS**

*The Metro Gold Line Eastside Extension Project is a six-mile, dual track light rail system with eight new stations and one station modification. The system originates at Union Station in downtown Los Angeles, where it connects with the Pasadena Gold Line, traveling generally east to Pomona and Atlantic Boulevards. The system will bridge State Route 101 Freeway and traverse the existing 1<sup>st</sup> Street Bridge over the Los Angeles River. The system will travel south on Alameda Street and then east on 1<sup>st</sup> Street with two stations at Alameda and Utah Streets. East of the Los Angeles River and 1<sup>st</sup> and Utah Streets, the alignment transitions to tunnel for approximately 1.7 miles, and continues beneath 1<sup>st</sup> Street to underground stations at 1<sup>st</sup> Street and Boyle Avenue and 1<sup>st</sup> Street and Soto Street. The alignment returns to the surface near the intersection of 1<sup>st</sup> Street and Lorena Streets, then jogs to the south, transitioning to follow 3<sup>rd</sup> Street with stations at Indiana Street, Ford Boulevard, Mednik Avenue and Pomona and Atlantic Boulevards.*

During this period, Advanced Partial Unit Design packages pertaining to Segments 3C and 4B were Issued for Construction (IFC). Segments 3A and 3B IFC design packages are also underway. All Systems Design packages have been completed.

Procurement of the City of Los Angeles 1<sup>st</sup> Street Bridge Phase III Widening Project continued per plan. Four construction bids were received by the City on November 28, 2007. Bids are under evaluation and contract award is expected in the next reporting period. The Phase III completion may impact the construction of the project guideway/trackwork on the bridge.

Underground construction is proceeding per plan. The C0803 electrical subcontractor this period continued conduit installation in both tunnels between the Soto Station and the East Portal. Also, the electrical subcontractor started the removal of a portion of the installed conduit under the walkway, which will have to be relocated to the embedded track to satisfy Safety Code requirements. The project schedule will not be impacted.

At the Boyle Heights/Mariachi Plaza Station, construction crews completed installation of mezzanine level exterior wall at the bulkhead and the interior walls between grid lines 1-3. The station entrance invert slab construction continued per schedule. The first concrete pour between grid lines 13-15 was completed and rebar and embeds placement started in the next section (grid lines 15-17). Work on the station emergency exit # 1 began with the installation of soldier piles. Also this period, field crews started placement of the shoring system for the construction of the station roof.

At the Soto Station, field crews completed installing the mezzanine slab and started placing additional shoring at the track level, which will support the weight of the mezzanine wall forms and the shoring system for the roof slab concrete pour. The removal of second level struts at the mezzanine level started this period, which allowed the water proofing HDPE membrane installation at exterior walls to begin. Also, construction crews began placing mezzanine slab rebar and embeds at the west end of the station next to the bulkhead.

At the West Portal, construction crews this period completed installation of concrete walkways and began backfilling above the roof section.

## **PROJECT OVERVIEW & STATUS**

At the East Portal, construction of the last portal structural section next to the hammerhead continued per plan. Field crews completed concrete pours for the exterior bulkhead and north walls at track level, and began installing rebar and embeds at the south wall. Also this period the interior walls at track level were completed.

At-grade construction is proceeding according to plan. Construction of the temporary baggage-handling road at Union Station continued per the schedule. Field crews completed the foundation work for the CMU walls and started erecting wall blocks and backfilling in anticipation of placing the light-weight material on top. Along Alameda Street (Segment 1), installation of the Mechanically Stabilized Earth (MSE) wall is nearing completion. The last prefabricated cast panels were erected and construction crews started installation of the wall coping. Also, guideway construction north of the intersection of Alameda and 1st Street began this period.

Along 1<sup>st</sup> Street between Alameda and Vignes Streets (Segment 2A), construction of the guideway continued per schedule. Field crews completed installation of guideway and trackwork at the intersection of 1st Street and Vignes Street. Also this period, construction of temporary crossings at the intersections of 1<sup>st</sup> Street with Vigness St. and Mission Rd. were completed. This was necessary to maintain two traffic lanes during construction of guideway and track along a non-widen 1<sup>st</sup> Street Bridge (Segment 2B). Also, rail welding for the tunnels and underground stations was completed utilizing a mobile rail welding operation.

Construction along 1<sup>st</sup> Street between Lorena and Indiana Streets in Segment 4A continued per the schedule. The street widening of the south side completed this period, which allowed guideway construction to begin east of Lorena Street. Construction crews completed street demolition and began installing OCS pole foundations. Along Indiana Street (Segment 4B) street improvements began at the north side of the intersections of Indiana Street and 1<sup>st</sup> and 3<sup>rd</sup> Streets. Street demolition and installation of temporary traffic signals were completed.

Construction along 3<sup>rd</sup> Street, between Ditman and Eastern Avenues, in Segment 5 continued according to plan. At the intersection of 3<sup>rd</sup> Street and Ditman Avenue, field crews started street improvements on the north side of the intersection, where street demolition completed and installation of curb and gutter began. Guideway construction continued between Gage and Rowan Streets, where installation of track and underground train control conduit and foundations continued this period. Between Downey Road and Herbert Avenue, installation of OCS poles continued and at Sunol Road and 3<sup>rd</sup> Street, construction of TPS-04 substation continued per the schedule. Field crews placed remaining power feed conduit and completed vaults installation at this location.

Between Mednik and Eastern Avenues (Segment 6), guideway construction also continued per plan. Field crews continued installing embedded rail and track plinth between Eastern Avenue and Ford Boulevard, as well as underground conduit and foundations for train control devices and cabinet cases. Installation of OCS poles in this segment completed this period.

## **PROJECT OVERVIEW & STATUS**

At the east end of the alignment along 3<sup>rd</sup> Street between Atlantic Boulevard and Mednik Street (Segment 7), guideway construction is near completion. Field crews completed fine grading the remaining track segment and the track crossover west of Woods Avenue, in preparation for installation of plinth and rail. At Atlantic Boulevard and Pomona, construction at the TPS-06 site continued this period. Field crews completed installing power feed conduit and vaults at this location.

In other areas of the alignment, at-grade station construction continues according to plan. At the Atlantic Station, construction crews continued erection of steel canopy sections. At the East Los Angeles Civic Center Station, field crews began installation of canopy steel supports. At the Maravilla Station, retaining wall construction started this period. Field crews completed rebar and forms for the north wall and also poured concrete. Also, construction at the Indiana Station continued per the schedule. The TC&C room roof and the station platform deck were completed. And at Pico/Aliso Station, field crews completed excavation of the TC&C room and poured the protection slab.

The City of Los Angeles contractor for the 1<sup>st</sup> Street Viaduct Bridge Widening Project, Phase II Girder Strengthening, achieved substantial completion on November 14, 2007. Although change work in advance of Phase III construction and contractor demobilization continues, the City of Los Angeles officially turned the bridge over to Metro last period on October 26, 2007.

The Caltrans contractor for the US-101 Freeway LRT Bridge Overcrossing Project (Contract C0802) achieved this period the last milestone "Plant Establishment Period".

The fabrication and delivery of 50 light rail vehicles (LRV's), Contract No. P2550, continues per the revised plan. Ten vehicles are required for the Metro Gold Line Eastside Extension Project. Fabrication of car assemblies is done at the contractor's plant in Italy and final assembly and testing is done at the contractor's facility in California. To date, a total of nine vehicles are going through the pre-acceptance process before entering the final inspection and commissioning phase. There were no deliveries to the commissioning site this period. Three completed vehicles in the final configuration are scheduled for delivery to the commissioning site next period. The current delivery schedule supports the project systems integration testing and pre-revenue phases.

The Universal Fare System (UFS) equipment fabrication is proceeding per the revised plan. The vendor's fabrication schedule is two months and will begin in December 2007. Metro staff has determined that in order to minimize the risk of equipment damage and vandalism, equipment installation will be deferred to the period of Pre-Revenue Operations. Therefore, it will be necessary for the vendor to store the completed equipment at the vendor's facility until the equipment is required for installation.

## **PROJECT OVERVIEW & STATUS**

The Metro Art Department continued providing technical support and coordination between the C0803 contractor and the artists responsible to provide art pieces for the eight stations. The artists continue to finalize the art design and the development of shop drawings with multiple fabricators. Metro and ELRTC staff this period continued having coordination meetings, where fabrication and installation schedules were discussed.

## **MANAGEMENT ISSUES**

No Management Issues for the period ending November 2007.

## PROJECT SCOPE

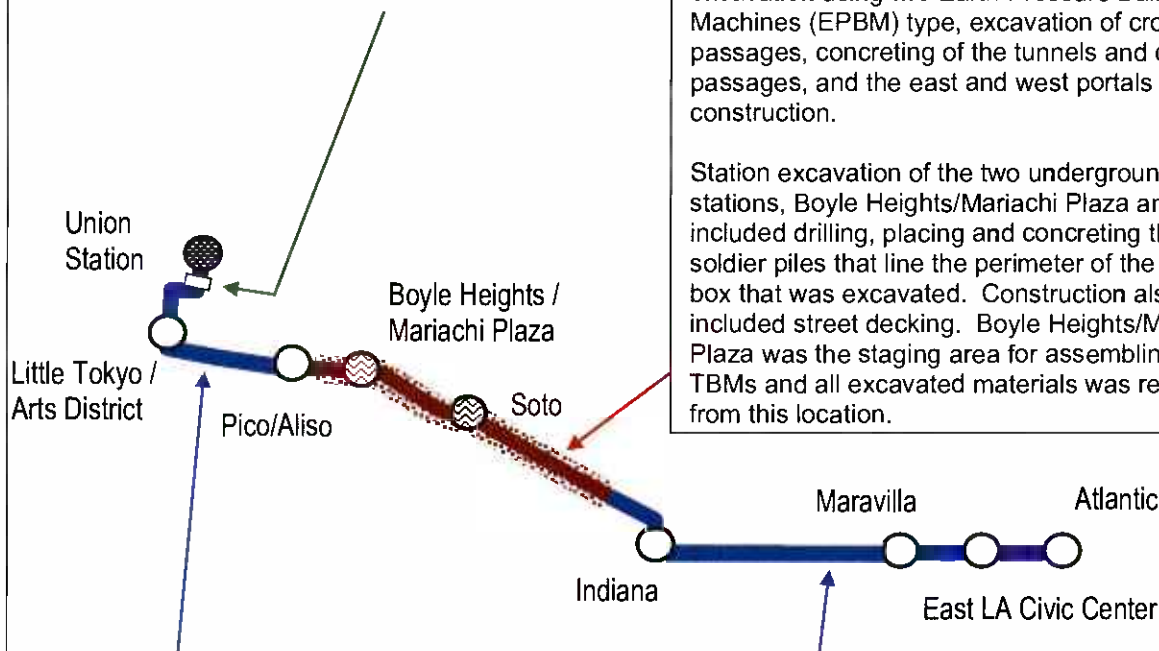
### **Contract C0802 – 101 Freeway Bridge**

**Overcrossing:** The construction of the bridge was combined with Caltrans freeway improvements project. Caltrans administered the construction and the LACMTA provided oversight and was responsible for the construction costs of the bridge overcrossing.

### **Contract C0803 - Tunnel and Station**

**Excavation (Design/Bid/Build):** Construction of the 1.7 mile tunnel segment included tunnel excavation using two Earth Pressure Balance Machines (EPBM) type, excavation of cross passages, concreting of the tunnels and cross passages, and the east and west portals construction.

Station excavation of the two underground stations, Boyle Heights/Mariachi Plaza and Soto, included drilling, placing and concreting the soldier piles that line the perimeter of the station box that was excavated. Construction also included street decking. Boyle Heights/Mariachi Plaza was the staging area for assembling the TBMs and all excavated materials was removed from this location.



**Contract C0803 - Stations, Trackwork, and Systems (Design/Build):** Construction of the two underground stations includes structural walls, station platforms, mezzanines, station entrances, and plazas, architectural finishes and all related mechanical and electrical work.

Construction of the six-mile alignment includes six at-grade stations, trackwork installation and testing for the entire alignment.









Systems installation and testing is inclusive of power systems, automatic train control, fire and emergency management, TRACS and communications systems. The contractor will be responsible for systems integration testing for the entire line segment prior to pre-revenue operations.



**Metro Gold Line Eastside Extension  
Monthly Project Status Report**

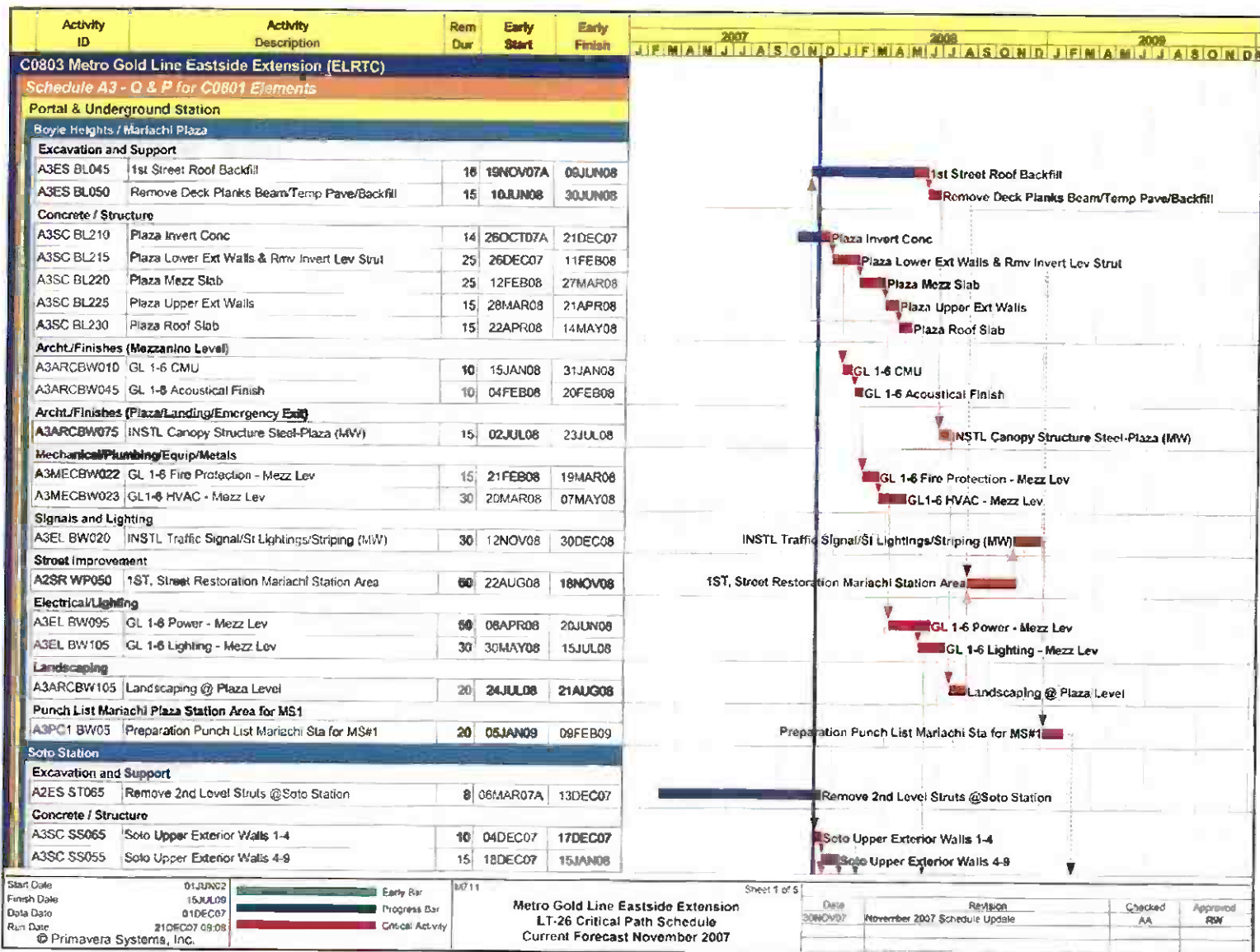
**November 2007**

**KEY MILESTONE SCHEDULE SIX-MONTH LOOKAHEAD**

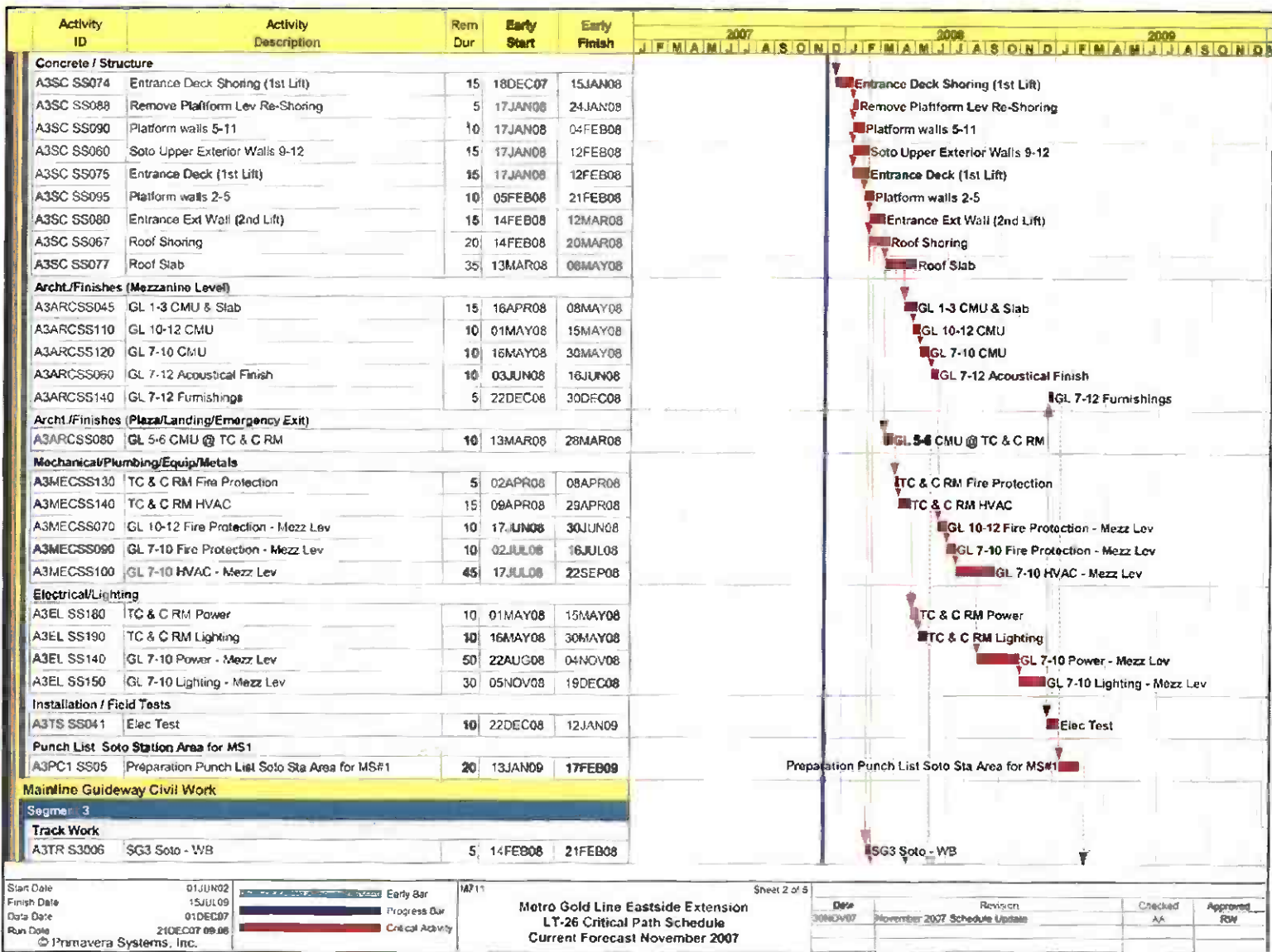
	Milestone Date	Nov-07	Dec-07	Jan-08	Feb-08	Mar-08	Apr-08
Completed Mezzanine Slab at Soto Station	11/09/07 *	○					
Completed Mezzanine Level Walls at Boyle Heights / Mariachi Plaza Station	11/29/07 *	○					
Complete MSE Wall From Commercial Street to Alameda Street - Segment 1	12/17/07 *		○				
Deliver the First Traction Power Substation - TPS-06	12/23/07		○				
Complete Delivery of Overhead Catenary System Poles	12/25/07		○				
Start Rail Installation in the Tunnels	12/27/07 *		○				
City of Los Angeles Award First Street Bridge Phase III Widening Contract	12/28/07		▲				
Complete All Design Approved for Construction (AFC)	12/31/07 *		○				
Start Installation of Cable Transmission System - Segment 7 East End of the Alignment	01/02/08 *			○			
Complete Civil Guideway Construction - Segment 7 East End of the Alignment	01/07/08 *			○			
Start Construction of the Boyle Heights/Mariachi Plaza Station Platform	01/08/08			○			
Start Communications Installation - Atlantic Station	01/18/08			○			
City of Los Angeles Issue First Street Bridge Phase III Widening Contract NTP	01/23/08			▲			
Complete Mezzanine Level Walls at Soto Station	02/12/08 *				○		
Complete Temporary Baggage Handling Road at Union Station	02/18/08 *				○		
Complete Construction of the East Portal Structure	03/13/08					○	
Complete Civil Guideway Construction - Segments 2A and 2B	03/18/08 *					○	
Complete At-Grade Stations Canopy Installation	04/17/08 *						○
Complete Installation of Traction Power Substations	04/21/08						○
Complete Entrance Structure at Boyle Heights / Mariachi Plaza Station	04/28/08						○
Start Installation of the Radio System in the Tunnels	04/30/08 *						○
<div>  LAC MTA Staff Milestone  Eastside LRT Constructors  FTA  FTA Approval </div> <div>  Other Agencies  New Date  Metro  LAC MTA Board Approval </div>							

Six-month lookahead schedule for Contract C0803 reflects the contractor's current CPM schedule.

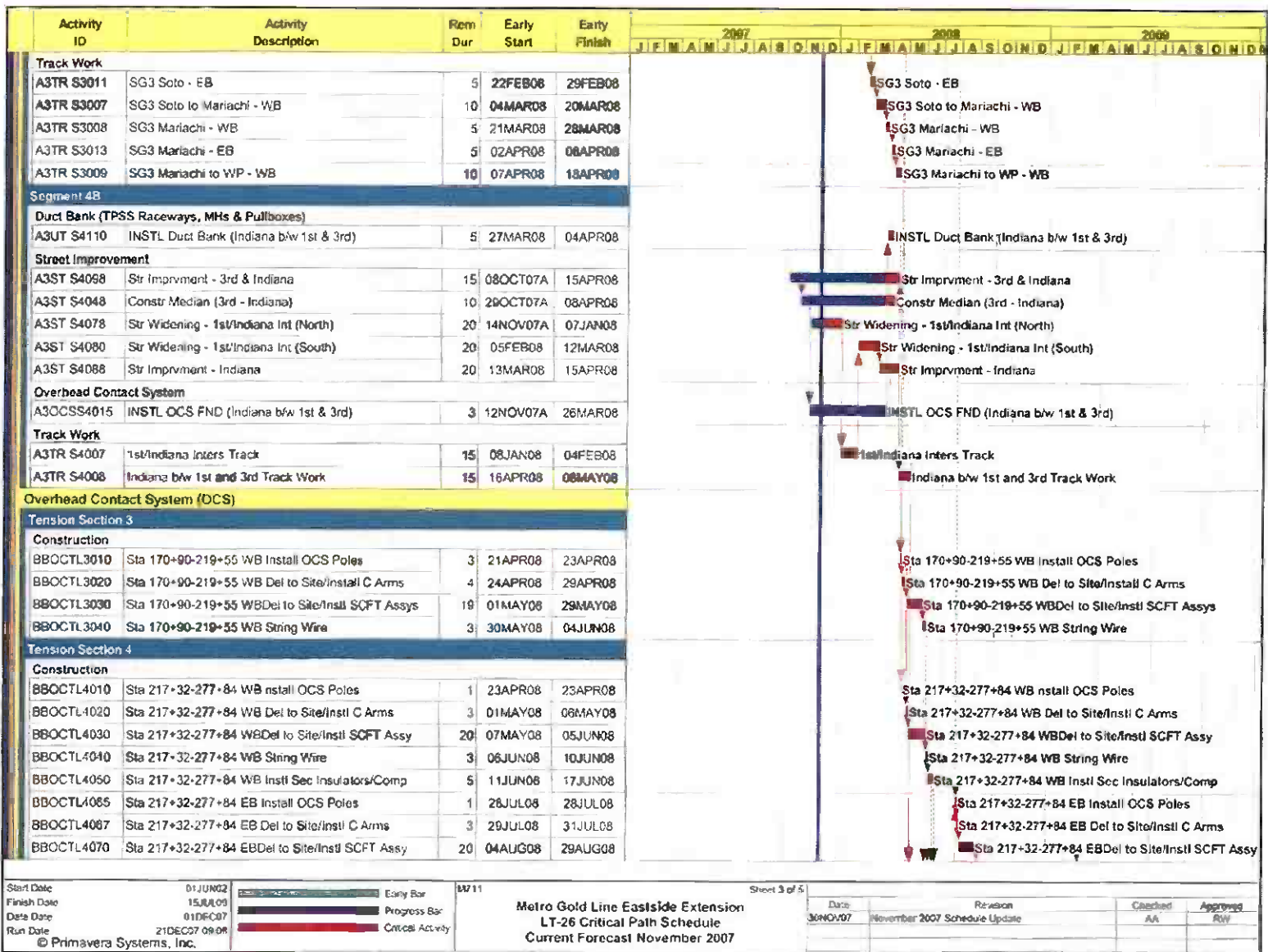
# PROJECT MASTER SCHEDULE CRITICAL PATH (1 of 5)



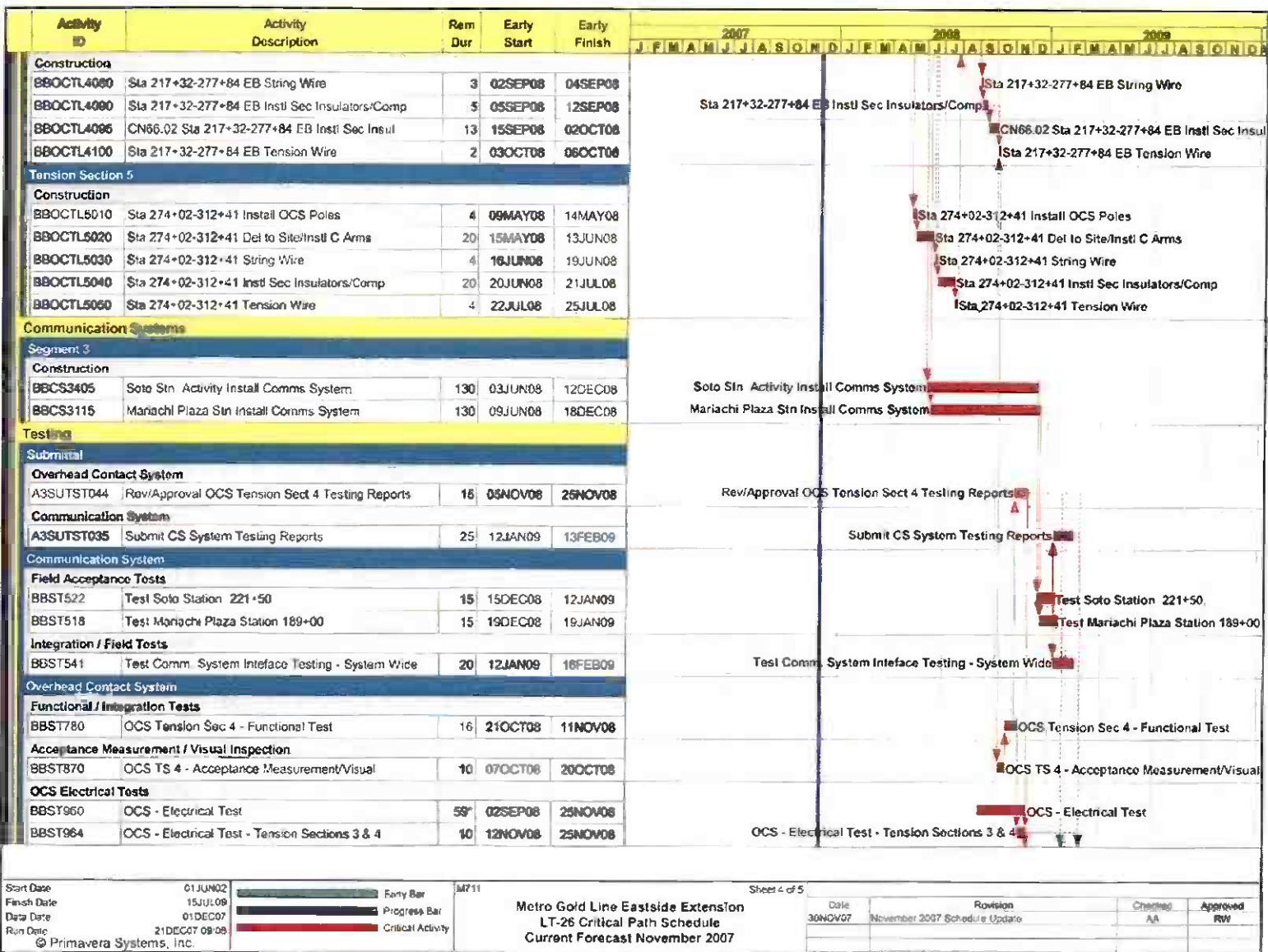
PROJECT MASTER SCHEDULE  
CRITICAL PATH (2 of 5)



PROJECT MASTER SCHEDULE  
CRITICAL PATH (3 of 5)

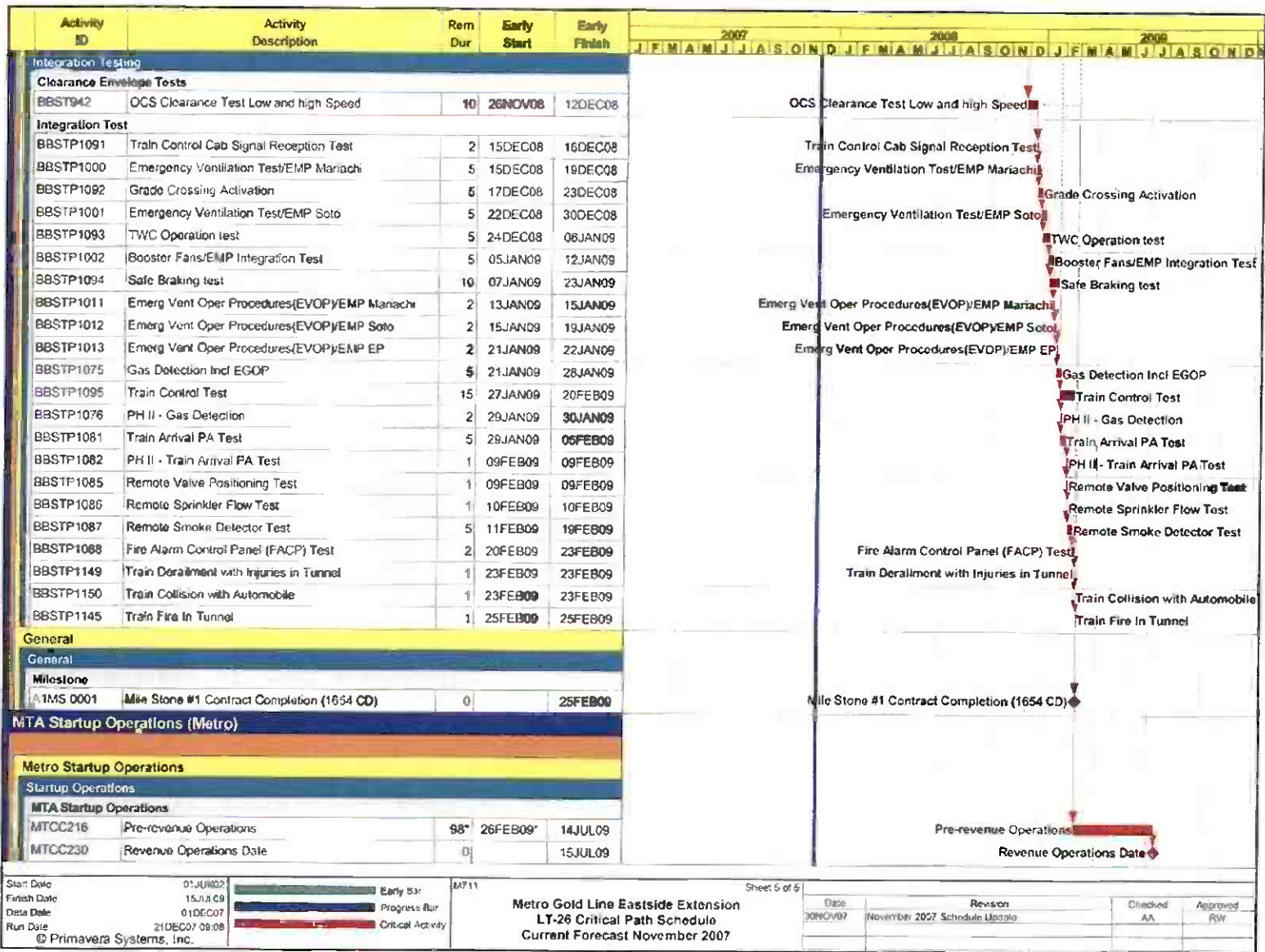


# PROJECT MASTER SCHEDULE CRITICAL PATH (4 of 5)





PROJECT MASTER SCHEDULE  
CRITICAL PATH (5 of 5)



## **CRITICAL PATH NARRATIVE**

### **Current Critical Path Analysis**

The critical construction of Boyle Heights/Mariachi Plaza Station roof slab and the Soto Station mezzanine level exterior walls is proceeding per plan. Street widening and guideway construction along Segment 4B of the alignment is also on the project critical path. The C0803 contractor continues reporting their overall progress to have been impacted by Segment 4B design and construction changes. The design issues are currently being addressed and Metro feels that opportunities will be available in follow-on activities to make up for impacts to the construction and testing schedule. Once the C0803 contractor presents a mitigation plan that addresses these delays, any remaining schedule impact will be assessed and reported.

The C0803 contractor has expressed concerns that without the completion of Phase III of the 1<sup>st</sup> Street Bridge Widening Project, construction delays are expected with trackwork and systems installations on the bridge, which may impact the substantial completion of their contract. Metro is addressing these concerns with the City of Los Angeles Staff and several mitigating alternatives were considered this period to minimize the impact. It appears that the temporary full closure of the bridge may be the best alternative.

After the completion of roof construction at Boyle Heights/Mariachi Plaza Station and the mezzanine level exterior walls at Soto Station, the project critical path becomes construction completion of the two underground stations and in a parallel path, construction of Segments 3 and 4B guideway and trackwork. Installation of OCS equipment and local facilities testing are the last stage of the critical path prior to entering the final test stage, where systems integration testing and pre-revenue operations are conducted.

## PROJECT COST STATUS

### COST REPORT BY ELEMENT

#### ORIGINAL SCOPE ACTIVITIES

DOLLARS IN THOUSANDS

ELEM- ENT	DESCRIPTION	ORIGINAL BUDGET	CURRENT BUDGET		COMMITMENTS		EXPENDITURES		CURRENT FORECAST		BUDGET / FORECAST VARIANCE
			PERIOD	TO DATE	PERIOD	TO DATE	PERIOD	TO DATE	PERIOD	TO DATE	
C	CONSTRUCTION	633,221	-	651,961	-	651,157	10,203	448,591	-	651,961	-
S	SPECIAL CONDITIONS	19,494	-	43,948	3,652	42,450	214	29,783	-	43,948	-
R	RIGHT-OF-WAY	40,358	-	42,299	-	46,182	-	43,676	-	42,299	-
P	PROFESSIONAL SERVICES	135,304	-	135,841	1	125,764	1,017	113,381	-	135,841	-
PC	PROJECT CONTINGENCY	60,254	-	14,599	-	-	-	-	-	14,599	-
PR	PROJECT REVENUE	(4,617)	-	(4,633)	-	-	-	(44)	-	(4,633)	-
SUBTOTAL		884,014	-	884,014	3,653	865,553	11,434	635,386	-	884,014	-
PF	PROJECT FINANCE COST	14,800	-	14,800	(2,906)	(720)	(2,906)	(720)	-	14,800	-
TOTAL		898,814	-	898,814	747	864,832	8,528	634,665	-	898,814	-

NOTE: EXPENDITURES ARE CUMULATIVE THROUGH OCTOBER 2007

## PROJECT COST ANALYSIS

### Original Budget

The Full Funding Grant Agreement (FFGA) was adopted June 1, 2004 in the amount of \$898.8 million. The Original Budget reflects the adopted FFGA.

### Current Budget and Current Forecast

The Current Budget and Forecast remains the same at \$898.8 million.

### Commitments

The Commitments increased by a total of \$0.7 million this period. In the Special Conditions element there was an increase of \$3.7 million due to the 3<sup>rd</sup> Party Master Cooperative Agreements with the City of LA and the Dry Utilities Shared Incentive Program. And in the Project Finance Cost element there was a decrease of \$2.9 million due to the interest income received. The Project Finance Cost reflects a credit amount due to the timing difference on actual interest received and interest paid. Interest earned is received monthly and interest payments are made semi-annually. Interest earnings are not projected to be more than the interest costs. The \$864.8 million in Commitments to date represents 96.2% of the Original Budget.

### Expenditures

Expenditures are cumulative through October 2007. The Expenditures increased by \$8.5 million this period primarily due to construction costs associated with Contract C0803 – Tunnel, Stations, Trackwork, and Systems, Metro's Administration, and 3<sup>rd</sup> Party Master Cooperative Agreements with the City of LA. The October 2007 invoice for Contract C0803 in the amount of \$13.1 million was posted in the Metro's Financial Information System (FIS) on November 12, 2007 and will be reflected in the next reporting period. The \$634.7 million in Expenditures to date represents 70.6% of the Original Budget.



## PROJECT COST STATUS

### COST REPORT BY ELEMENT CONCURRENT NON-FFGA PROJECT ACTIVITIES DOLLARS IN THOUSANDS

ELEM- ENT	DESCRIPTION	ORIGINAL BUDGET	CURRENT BUDGET		COMMITMENTS		EXPENDITURES		CURRENT FORECAST		BUDGET / FORECAST VARIANCE
			PERIOD	TO DATE	PERIOD	TO DATE	PERIOD	TO DATE	PERIOD	TO DATE	
C	CONSTRUCTION	18,000	-	41,174	407	34,925	57	8,067	-	41,174	-
S	SPECIAL CONDITIONS	-	-	2,719	-	1,850	-	1,108	-	2,719	-
R	RIGHT-OF-WAY	-	-	-	-	-	-	-	-	-	-
P	PROFESSIONAL SERVICES	-	-	2,280	525	1,333	3	122	-	2,280	-
PC	PROJECT CONTINGENCY	-	-	-	-	-	-	-	-	-	-
PR	PROJECT REVENUE	-	-	(4,087)	(59)	(4,595)	-	(279)	-	(4,087)	-
SUBTOTAL		18,000	-	42,086	873	33,513	61	9,018	-	42,086	-
PF	PROJECT FINANCE COST	-	-	-	-	-	-	-	-	-	-
TOTAL		18,000	-	42,086	873	33,513	61	9,018	-	42,086	-

NOTE: EXPENDITURES ARE CUMULATIVE THROUGH OCTOBER 2007

## PROJECT COST ANALYSIS

### Original Budget

The Metro Board adopted the Original Budget of \$18.0 million on March 24, 2005.

### Current Budget and Current Forecast

The Current Budget and Forecast remain the same at \$42.1 million.

### Commitments

The Commitments increased by a total of \$0.9 million this period. In the Construction element there was an increase of \$0.4 million for mitigation of City caused delays on the 1<sup>st</sup> Street Bridge. In the Professional Services element there was an increase of \$0.5 million for design services associated with the Pomona/Atlantic Parking Structure. The \$33.5 million in Commitments to date represents 79.6% of the Current Budget.

### Expenditures

Expenditures are cumulative through October 2007. The Expenditures increased by \$0.1 million this period due to the traction power sectionalization and Metro's Project Administration costs. The October 2007 invoice for Contract C0803 in the amount of \$0.5 million was posted in the Metro's Financial Information System (FIS) on November 12, 2007 and will be reflected in the next reporting period. The \$9.0 million in Expenditures to date represents 21.4% of the Current Budget.

**FINANCIAL/GRANT STATUS – ORIGINAL SCOPE ACTIVITIES**

NOVEMBER 2007		STATUS OF FUNDS BY SOURCE									
SOURCE	(A) ORIGINAL BUDGET	(B) TOTAL FUNDS ANTICIPATED	(C) TOTAL FUNDS AVAILABLE	(D) COMMITMENTS	(D/B)	(E) EXPENDITURES	(E/B)	(F) BILLED TO FUNDING SOURCE	(F/B)		
				\$	%	\$	%	\$	%		
FEDERAL - SECTION 5309 NEW START	\$490.700	\$490.700	\$255.193	\$472.263	96%	\$307.372	63%	(1)	\$307.372	63%	
FED - SECTION 5309 FIXED GUIDEWAY	\$23.100	\$12.000	\$12.000	\$12.000	100%	\$12.000	100%		\$12.000	100%	
FEDERAL - CMAQ	\$10.300	\$10.300	\$10.276	\$10.276	100%	\$10.276	100%		\$10.276	100%	
REGIONAL IMPROVEMENT PROG - FED	\$179.600	\$4.600	\$4.600	\$4.600	100%	\$4.600	100%		\$4.600	100%	
REGIONAL IMP PROG - STATE	\$0.600	\$175.600	\$131.796	\$175.600	100%	\$131.796	75%		\$131.796	75%	
STATE TCRP	\$45.000	\$45.000	\$45.000	\$45.000	100%	\$45.000	100%		\$45.000	100%	
PROP A 35% / PROP C 40%	\$124.614	\$135.714	\$135.714	\$135.714	100%	\$114.242	84%		\$98.257	72%	
LEASE REVENUES	\$10.100	\$10.100	\$10.100	\$10.100	100%	\$10.100	100%		\$10.100	100%	
ACCRUALS											
SUB-TOTAL	\$884.014	\$884.014	\$604.679	\$865.553	98%	\$635.386	72%		\$619.401	70%	
PROP A / PROP C (INTEREST COST)	\$14.800	\$14.800	\$1.980	(\$0.720)	-5%	(\$0.720)	-5%		(\$0.798)	-5%	
TOTAL	\$898.814	\$898.814	\$606.659	\$864.833	96%	\$634.666	71%		\$618.603	69%	

NOTE: EXPENDITURES ARE CUMULATIVE THROUGH OCTOBER 2007  
(1) BILLED EXPENDITURES IN EXCESS OF FUNDS AVAILABILITY ARE TEMPORARILY FUNDED THROUGH BRIDGE FINANCING.

**STATUS OF FUNDS ANTICIPATED**

**FEDERAL SECTION 5309 NEW STARTS:** LACMTA has received an appropriation of \$100M through FY07.

**RIP-STATE:** LACMTA submitted an allocation request of \$43.8 to the CTC for consideration at their July 2007 meeting. The request was approved in October 2007 and funds are available for drawdown.

**STATE TCRP:** On March 2005, LACMTA resubmitted a request for approval of a LONP for \$189.2M for Phase 4 (Construction) to the CTC for consideration at the May 2005 CTC Meeting. The CTC approved the LONP for \$166.9M and recently revised their guidelines to allow for partial LONP reimbursement prior to phase completion. LACMTA has requested to liquidate the LONP, with an allocation request of \$166.9M that was considered by the CTC at their September 2006 meeting. The allocation request was approved in February 2007.

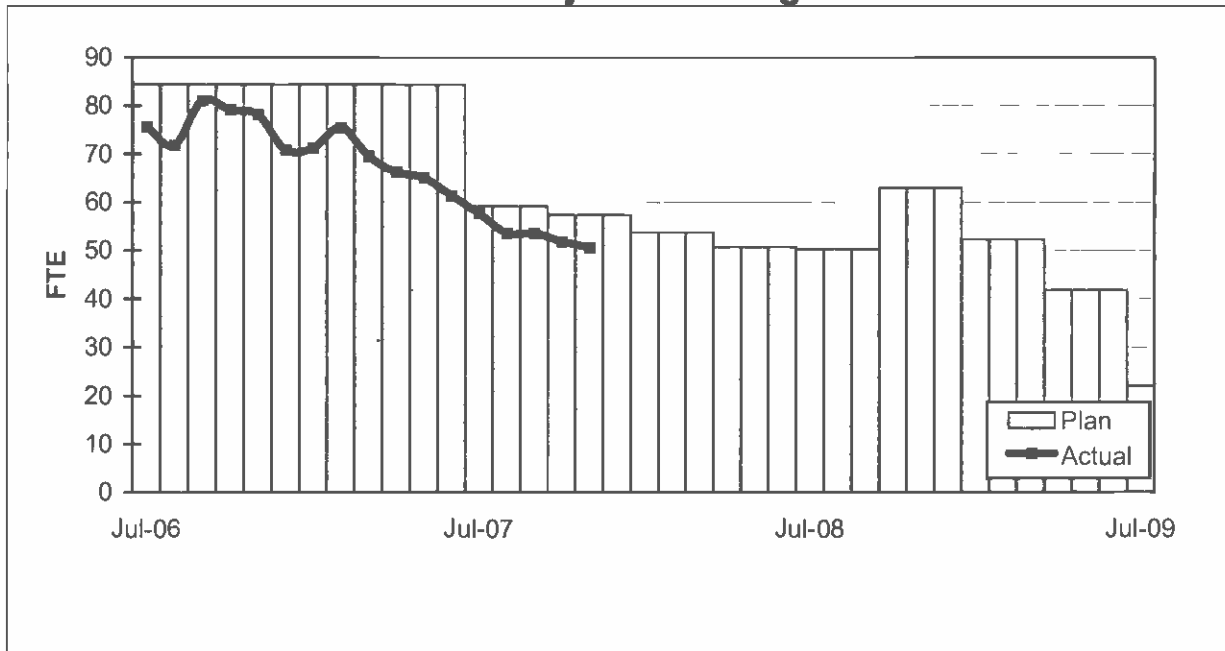
**FINANCIAL/GRANT STATUS**  
**CONCURRENT NON-FFGA PROJECT ACTIVITIES**

NOVEMBER 2007		STATUS OF FUNDS BY SOURCE							
SOURCE	(A) APPROVED BUDGET	(B) TOTAL FUNDS ANTICIPATED (1)	(C) TOTAL FUNDS AVAILABLE	(D) COMMITMENTS \$	(D/B) %	(E) EXPENDITURES \$	(E/B) %	(F) BILLED TO FUNDING SOURCE \$	(F/B) %
PROP C 40%	\$14,000	\$14,000	\$14,000	\$14,000	100%	\$6,278	45%	\$4,935	35%
PROP C 10%	\$4,000	\$4,000	\$4,000						
STATE TCR	\$0,000	\$24,086	\$24,086	\$19,513	81%	\$2,740	11%	\$2,740	11%
TOTAL	\$18,000	\$42,086	\$42,086	\$33,513	80%	\$9,018	21%	\$7,675	18%

NOTE: EXPENDITURES ARE CUMULATIVE THROUGH OCTOBER 2007.

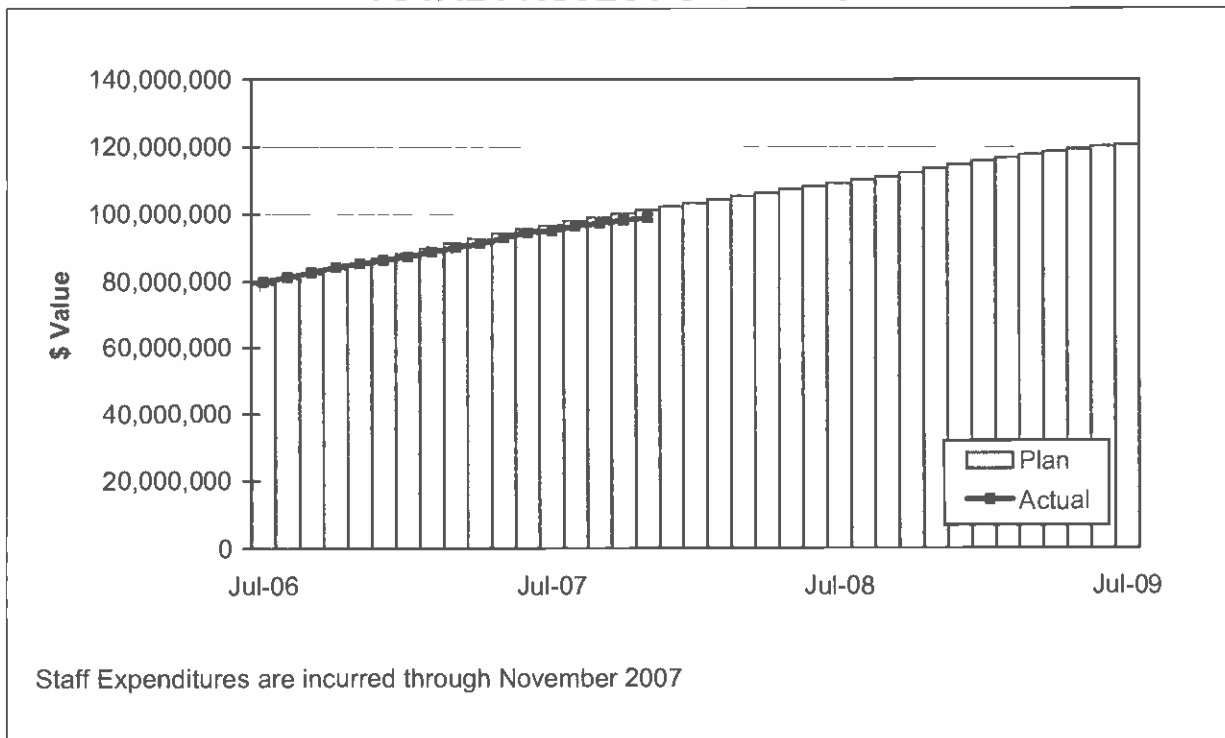
## STAFFING STATUS

### Total Project Staffing - FTES



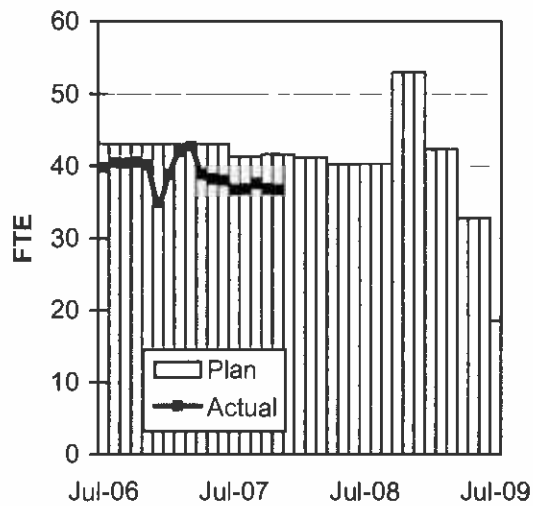
## STAFFING STATUS

### TOTAL PROJECT STAFFING COST

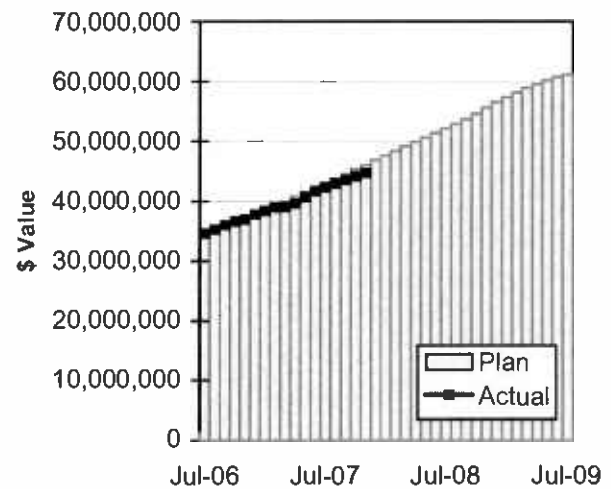


## STAFFING STATUS

**DIRECT AGENCY - FTES**

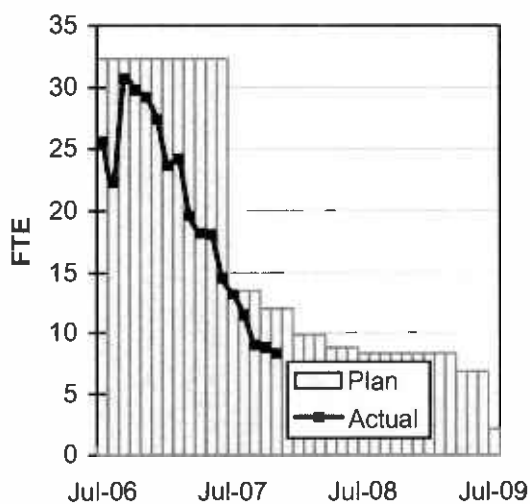


**DIRECT AGENCY - COST**

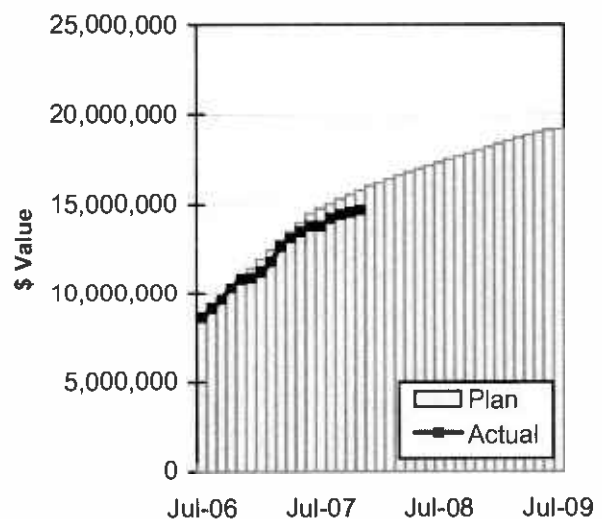


Staff Expenditures are incurred through November 2007

**CONSTRUCTION MGMT – FTES**



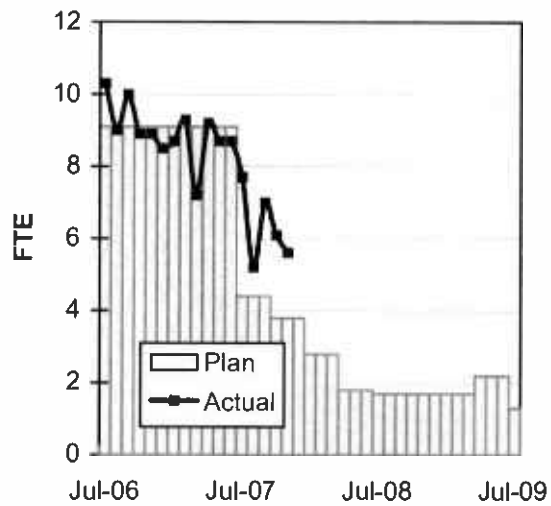
**CONSTRUCTION MGMT - COST**



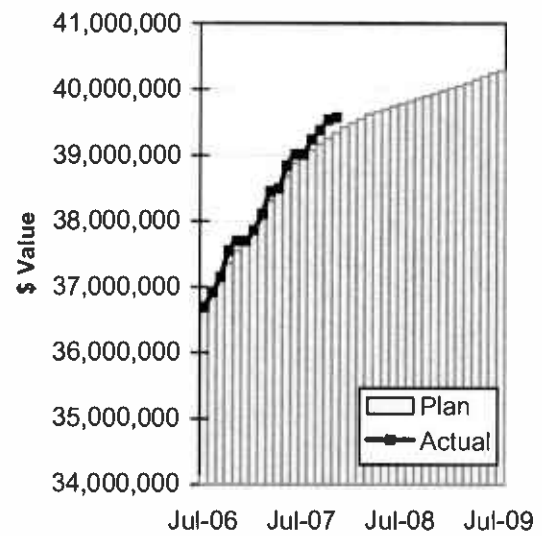
Staff Expenditures are incurred through November 2007

## STAFFING STATUS

ELRT PARTNERS - FTES



ELRT PARTNERS - COST



Staff Expenditures are incurred through November 2007

**REAL ESTATE STATUS**

- For C0803, the tunnel portion of the alignment, 40 parcels were required for acquisition (11 full takes, 4 partial takes, 20 sub-surface easements/temporary construction easements, 3 sub-surface easements/building protection, and 2 building protections).
- For C0803, the at-grade portion of the alignment, 27 parcels were required for acquisition (17 full takes, 9 partial takes and 1 surface easement). Nine parcels were required for the LAUSD Ramona Opportunity High School site reconfiguration.
- For C0802, 2 parcels were required (1 surface easement and 1 full take parcel).
- Two Encroachment Permits were obtained from Caltrans for the C0803-Tunnel. Three street closures were obtained from the City of LA.

**REAL ESTATE ACQUISITION SCHEDULE SUMMARY**

<i>Number of Parcels</i>	Required	Acquired	On Schedule	Behind Schedule	
				Number	Avg. Calendar Days
This Period	69	69	0	0	0
Last Period	69	69	0	0	0

**REAL ESTATE STATUS TO DATE BY CONTRACT  
ACQUISITION PHASE**

CONTRACT NO.	Number of Parcels (A+B+C+D+E)	Agreements Signed (A)	Parcels in Condemnation (B)	Under Negotiation (C)	In Appraisal Process (D)	Inactive Parcels (E)	Parcels Available
C0803-Tunnel	40	40	0	0	0	0	40
C0803-At-Grade	27	27	0	0	0	0	27
C0802	2	2	0	0	0	0	2
TOTAL	69	69	0	0	0	0	69
LAST PERIOD	69	69	0	0	0	0	69

## **ENVIRONMENTAL STATUS**

- Finalized the burial plan for the Evergreen Cemetery site.
- The Ad-Hoc Subcommittee Meeting discussed the wording for the memorial wall and grave markers.

## **COMMUNITY RELATIONS STATUS**

- Distributed six Construction Notices which reached approximately 22,020 residences/businesses. Activities include: traffic switches, DWP pole removal, tree trimming, and street and sidewalk reconstruction.
- Held monthly Ad-Hoc Sub Committee Meeting, Executive Review Advisory Committee Meeting and Review Advisory Committee Meeting.
- Participated in Hollenbeck Youth Center Christmas Event Planning Meeting and CD14 Bridge Lighting Holiday Planning Meeting.
- Supported 17<sup>th</sup> Annual Mariachi Festival and Santa Cecilia Festival.
- Met with six residents/business owners to coordinate construction activities.
- Delivered twenty Open During Construction banners.



## **QUALITY ASSURANCE STATUS**

- Quality Management continues to review contractor's monthly Asphalt, Concrete Compressive Strength and Soils Compaction reports - areas of concern, if any, are coordinated to resolution with the onsite lab representative.
- The results of field surveillance activities continue to be identified in Weekly Surveillance Reports.
- Fabrication of OCS Poles is complete and poles are currently being installed. Metro is waiting for submittal of final calculations in support of the UT testing results disposition.
- Station canopy fabrication continues and is the subject of additional Metro attention. Areas of concern are being coordinated to resolution.

## **SAFETY STATUS**

- Participated in weekly progress meetings with Construction Managers and ELRTC management personnel to discuss safety related issues and construction schedule.
- Conducted Monthly All Hands Safety Meeting with ELRTC Safety personnel, MTA Security and LAPD representatives.
- Participated in Contractor Readiness Review Meetings.
- Monitored construction activities on a daily basis including weekends to ensure contractor compliance with Contract Specification.
- ELRTC and their subcontractors reported no recordable incidents and 92,569 work hours for the month of November 2007. A total of thirty (32) recordable incidents have occurred Project to Date. Total Project to Date work hours are 2,483,463. Injury Rates for Recordable incidents are 2.5; well below the National Average of 5.6.

## **ART DEVELOPMENT STATUS**

- Coordination meetings with Construction for artwork fabrication/installation schedules for eight stations.

**THIRD PARTY AGREEMENT STATUS**

Third Party	Type of Agreement	Forecast Execution Date	Required Need Date	Status/ Comments
City of Los Angeles	Amendment	Completed	N/A	Executed December 2002.
Los Angeles County	Master	Completed	N/A	Executed April 2003.
Caltrans (All Projects)	Master	Completed	N/A	Executed July 2003.
Caltrans (101)	Design	Completed	N/A	Executed July 2003.
Caltrans (101)	Construction	Completed	N/A	Executed September 2003.
Caltrans (101)	Maintenance	12/08	Project Completion	The initial negotiation meeting was held on 1/9/03. LACMTA received a draft from Caltrans on 1/22/04. LACMTA reviewed and submitted the agreement to Caltrans on 2/10/04. A follow up call was made on 10/20/05 but no response to date.
LADWP (Water/Power)	Amendment	12/07	*6/04	LACMTA Management, County Counsel, and LACMTA Board staff have participated in meetings with DWP to complete negotiations, since the "Deadline and Delay" clause is not acceptable to LADWP. Alternative language was forwarded to LACMTA Management and County Counsel for review on 10/7/05. LACMTA CEO is to speak with LADWP CEO.
So. Cal. Edison Co.	Amendment	N/A	N/A	SCE Executive Legal Branch stated on 2/25/05 they have no intention of signing agreement.
The Gas Company	Amendment	Completed	N/A	Executed May 2005.
SBC/AT & T	Amendment	Completed	N/A	Executed May 2005. SBC has been acquired by AT&T and has formed a new corporation TCM for work in Southern California. A new agreement has been negotiated with Metro and TCM, which was approved by the Metro Board in April. The new agreement mirrors the SBC agreement except for some minor changes in the insurance language.
Adelphia Cable Company	Amendment	12/07	*6/04	LACMTA received a draft from Adelphia for review. LACMTA Management and County Counsel reviewed the amendment and returned the document to Adelphia with comments. Adelphia's Legal Department is reviewing the document and follow-up calls were made on 10/20/05 and 11/16/05.
Calif Wtr Service Co	Master	Completed	N/A	Executed May 2005.
L.A. County Sanitation Districts	N/A	N/A	N/A	In a letter dated 3/26/03, the Sanitation District stated that there is not a need for an agreement since there are no relocations related to their facilities. The Sanitation District will review submittals related to encasements of their facilities on Indiana Street.
MCI Worldcom	Amendment	Completed	N/A	Executed May 2005.
Metropolitan Wtr Dist	Amendment	Completed	N/A	Executed May 2003.

**THIRD PARTY AGREEMENT STATUS**

Third Party	Type of Agreement	Forecast Execution Date	Required Need Date	Status/ Comments
Verizon Wireless	Amendment	12/07	*6/04	The revised draft amendment was hand delivered to Verizon on 11/19/03 and an electronic copy was sent to them 2/19/04. Verizon did respond with comments, which were reflected in a revised agreement sent 4/05. Verizon legal is completing final review. Follow up calls were made on 10/20/05 and 11/16/05. Verizon has now joined MCI and once the legal work is complete in late February 2006, LACMTA may be able to use the MCI Agreement for Verizon work. E-mailed MCI Agreement to Verizon Representative for consideration as overall agreement covering Verizon and MCI as the new Verizon.
GST	N/A			Facilities are not impacted by Eastside Construction
Exxon Mobil Oil Company	N/A			Facilities are not impacted by Eastside Construction
Pacific Pipeline Company	N/A			Facilities are not impacted by Eastside Construction
Kinder Morgan Pipeline Company	N/A			Facilities are not impacted by Eastside Construction
Tosco Refining Company	N/A			Facilities are not impacted by Eastside Construction
Equilon Pipeline Company	N/A			Facilities are not impacted by Eastside Construction
Level 3 Communications	N/A			Facilities are not impacted by Eastside Construction
Broadwing Communications	N/A			Facilities are not impacted by Eastside Construction
Eller Media	N/A			Facilities are not impacted by Eastside Construction

\* Work will be performed under the current MCA and will not delay ongoing work.

**Metro Gold Line Eastside Extension  
Monthly Project Status Report**

**November 2007**

**CPUC CROSSING SUMMARY**

Batch	Application Status	Initial Package Submittal to MTA	Field Diagnostic Meeting	Revised Drawings Due to MTA	Draft Write-up to MTA	Draft Package Submittal to PUC Local office and Agencies	Final Package Submittal to PUC	CPUC Final Approval
1	Complete	8/5/02	8/12/02	8/26/02	9/6/02	9/6/02	9/6/2002	Approved
2	Complete	10/4/02	10/11/02	10/25/02	11/6/02	11/22/02	11/22/2002	Approved
3	Complete	2/6/03	2/27/03	3/10/03	1/27/03	4/11/02	4/18/2003	Approved
4	Complete	12/14/02	1/15/03	1/29/03	11/13/02	5/5/03	6/18/2003	Approved
4A	Complete	1/24/03	1/29/03	3/14/03	2/7/03	9/5/03	1/23/2004	Approved
6	Complete	3/19/03	3/26/03	6/20/03	2/7/03	9/5/03	9/12/2003	Approved
7	Complete	12/11/02	12/18/02	3/31/03	2/7/03	5/5/03	7/25/2003	Approved
8	Complete	11/26/02	12/18/02	3/31/03	11/15/02	6/6/03	5/21/2004	Approved
9	Complete	1/20/03	1/29/03	3/31/03	11/22/02	8/29/03	9/12/2003	Approved
10	Complete	12/11/03	12/18/02	3/10/03	11/22/02	5/5/03	8/29/2003	Approved
11	Complete	2/13/03	2/27/03	4/18/03	12/6/02	6/6/03	8/29/2003	Approved
12	Complete	2/13/03	2/27/03	4/18/03	12/13/02	6/6/03	9/5/2003	Approved
13	Complete	2/6/03	2/20/03	4/18/03	2/21/03	6/6/03	9/1/2004	Approved
14	Complete	1/8/03	1/15/03	3/14/03	11/12/02	8/29/03	10/30/2003	Approved
15	Complete	2/26/03	N/A	N/A	2/21/03	6/6/03	8/29/2003	Approved
16	Complete	2/26/03	N/A	N/A	2/28/03	6/6/03	8/29/2003	Approved
17	Complete	1/8/03	1/15/03	N/A	2/14/03	5/5/03	6/13/2003	Approved
18	Complete	1/8/03	1/15/03	3/20/03	2/14/03	5/5/03	6/13/2003	Approved
Agency Responsible		ELRTP	MTA	ELRP	ELRTP	MTA	MTA	

Batch No. 5 has been removed, as the Midway Yard will be utilized.

**SHADED AREAS REPRESENTS COMPLETION**

All applications are approved.

Batch Descriptions			
1	1st / Alameda	10	3rd / Ford
2	Alameda / Temple		3rd / McDonnel
	1st / Hewitt		3rd / Arizona
	Ped Crossings @ 1st / Alameda Station	11	3rd / Mednik
3	1st / Vignes		3rd / Civic Center Drive
4	1st / Lorena		3rd / La Verne
4A	Indiana/1st	12	3rd / Driveways to Sherriff's Station
	Indiana/3rd		3rd / Wood / Via Corona / Pomona / Beverly
	Indiana Pedestrian Crossing	13	3rd / 60 Fwy WB Connector
6	1st / Mission		3rd / 60 Fwy over ELRT
	1st / Anderson		3rd / 710 Fwy SW Connector
	1st / Clarence		3rd / Bridge over 710 Fwy
	1st / Utah	3rd / 710 Fwy SE Connector	
	1st/Gless Pedestrian Crossing	14	Union Station Service Road
7	3rd / Rowan	15	1st / Santa Fe
			1st / Myers
8	3rd / Gage	16	1st / MTA
	3rd / 60 Fwy WB Ramps		1st / BNSF
	3rd /Downey		1st / Union Pacific

**Metro Gold Line Eastside Extension**  
**Monthly Project Status Report**

**November 2007**

**CONTRACT C0802 STATUS**

<b>Description: 101 Freeway Bridge Overcrossing</b> <b>Contractor: Brutoco Engineering &amp; Construction</b>		<b>Contract No. C0802</b> <b>Status as of: November 30, 2007</b>					
<b>Progress/Work Completed:</b> * Bridge work was completed in March 2007 * Plant Maintenance period achieved November 2007  <b>Areas of Concern:</b> * None		<b>Major Activities (In Progress):</b> * None  <b>Major Activities Next Period:</b> * None					
<b>Schedule Summary:</b>  Date of Award: 09/07/04 Notice to Proceed: 09/22/04  Original Contract Duration: 700 CD Current Contract Duration: 775 CD Elapsed Time from NTP: 904 CD *  * Note: Elapsed time to Milestone # 1 completion			Original Contract Dates	Time Extension	Current Contract	Forecast	Variance CDs
		Notice to Proceed	09/22/04	0	09/22/04	09/22/04	0
		Milestone 1 - Complete Abutment No. 10	06/26/06	49	08/14/06	03/15/07	-213
		Milestone 2- Complete All Work Without Plant Establishment	08/23/06	75	11/06/06	08/06/07	-273
<b>Physical Percent Complete:</b> Physical completion ** as of this reporting period is: 100.00%  ** Note: Physical completion assessment reflects work completed and invoice amount shown in Caltrans Monthly Progress/ Expense Report No. 30.		<b>Cost Summary: \$ In millions</b> 1. Award Value: 6.42 2. Executed Modifications: 0.00 3. Approved Change Orders: 0.00 4. Current Contract Value (1+2+3): 6.42 5. Incurred Cost: 6.42					

## CONTRACT C0803 STATUS

<b>Description: Tunnel, Stations, Trackwork &amp; Systems</b> <b>Contractor: Eastside LRT Constructors</b>	<b>Contract No. C0803</b> <b>Status as of: November 30, 2007</b>					
<b>Progress/Work Completed:</b> <ul style="list-style-type: none"><li>• Poured Mariachi Plaza Station west bulkhead exterior wall at mezzanine level and the entrance invert slab</li><li>• Started Mariachi Plaza Station emergency vent fan shaft walls</li><li>• Completed Soto Station mezzanine concrete slab</li><li>• Started Soto Station additional shoring at track level</li><li>• Completed West Portal concrete walkways at track level</li><li>• Poured East Portal bulkhead exterior wall by the hammerhead</li><li>• Completed guideway and track at 1st Street and Vignes St.</li><li>• Started guideway work between Lorena and Indiana streets</li><li>• Installed embedded rail track at Maravilla Station</li><li>• Completed rail welding for both tunnels</li><li>• Completed installation of MSE wall panels along Alameda Street</li><li>• Completed St.widening (south)-Seg.4A between Lorena &amp; Indiana</li><li>• Started canopy installation at East Los Angeles Civic Center Stn.</li><li>• Poured Indiana Station TC&amp;C room roof and station platform deck</li><li>• Installed temporary baggage handling road CMU foundation&amp;walls</li><li>• Poured CMU wall foundations at the TPS-05 site</li><li>• Completed street improvements (south) at 3rd Street &amp; Ditman and 3rd Street &amp; Indiana</li></ul> <b>Areas of Concern:</b> <p>The forecast date for milestone # 1 reflects 47 calendar days beyond the current contractual completion date. Metro has requested a recovery schedule from the contractor. The current forecast does not impact ROD.</p>	<b>Major Activities (In Progress):</b> <ul style="list-style-type: none"><li>• Mariachi Plaza Station roof slab and entrance invert slab</li><li>• Soto Station removal of 2nd level struts and installation of exterior walls at mezzanine level</li><li>• West Portal backfill above the roof</li><li>• East Portal south exterior wall by the hammerhead</li><li>• Fabricate underground stations escalators and elevators</li><li>• Electrical raceway installation in both tunnels</li><li>• Construct Indiana, Maravilla and Pico/Aliso stations</li><li>• MSE wall coping south of the C0802 Bridge</li><li>• OCS pole foundations and duct bank between Lorena &amp; Indiana</li><li>• Guideway construction along the 1st Street Bridge</li><li>• Segments 4A, 5, 6 guideway/track construction</li><li>• Street improvements (north) at 1st Street &amp; Indiana intersection</li><li>• Street improvements (north) at 3rd Street &amp; Indiana intersection</li><li>• Install OCS poles and arm brackets between Atlantic and Indiana</li><li>• Install TPS-06 grounding grid and equipment foundations</li><li>• Train Control underground installation - Segments 4A, 5 and 6</li></ul> <b>Major Activities Next Period:</b> <ul style="list-style-type: none"><li>• Mariachi Plaza Station roof concrete slab, emergency exit # 1 and emergency vent fan shaft walls and roof</li><li>• Soto Station construction of mezzanine exterior walls</li><li>• East Portal roof concrete slab</li><li>• Pico/Aliso Station TC&amp;C room and station platform</li><li>• East Los Angeles Civic Center and Maravilla Stations canopies</li><li>• Guideway and track installation along the 1st Street Bridge</li><li>• Segments 1, 2B, 3 (tunnels) &amp; 4A guideway/track construction</li><li>• OCS and Train Control equipment installation</li><li>• TPS-06 substation delivery and installation</li></ul>					
<b>Schedule Summary:</b>  Date of Award: 06/01/04 Notice to Proceed: 07/01/04  Original Contract Duration: 1795 CD Current Contract Duration: 1800 CD Elapsed Time from NTP: 1248 CD  Option D Contract duration 90 CD Complete		Original Contract Dates	Time Extension	Current Contract	Forecast	Variance CDs
	Notice to Proceed	07/01/04	0	07/01/04	07/01/04	0
	Milestone 1 - Contract Completion. Complete all systems integration testing and ready for MTA's pre-revenue operation testing.	12/31/08	9	01/09/09	02/25/09	-47
	Milestone 3 - Complete Universal Fare System Equipment area.	04/30/08	5	05/05/08	05/05/08	0
	Milestone 5 - Vacate all staging areas and turn over to MTA.	05/30/09	5	06/04/09	06/04/09	0
	Milestone 6 - Complete design and construction of Option D work.	09/28/04	0	09/28/04	09/28/04	0
<b>Physical Percent Complete:</b> Physical completion * as of this reporting period is: 71.05%  * Note: Physical completion assessment reflects work completed and work in progress.	<b>Cost Summary:</b> <b>\$ In millions</b>  1. Award Value: 600.45 2. Executed Modifications: 9.00 3. Approved Change Orders: 0.14 4. Current Contract Value (1+2+3): 609.58 5. Incurred Cost: 453.03					

## CONTRACT E700051F STATUS

<b>Description: 1st Street Bridge Strengthening</b> <b>Contractor: The Griffith Company</b>	<b>Contract No. E700051F</b> <b>Status as of: November 30, 2007</b>																		
<b>Progress/Work Completed:</b>  * Bridge turned over to Metro on October 26, 2007        <b>Areas of Concern:</b>  * None	<b>Major Activities (In Progress):</b>  * Perform additional drilling and remove a Conoco pipe line in anticipation of Phase III work * Contractor demobilization   <b>Major Activities Next Period:</b>  * None																		
<b>Schedule Summary:</b>  Date of Award: 01/19/07 Notice to Proceed: 02/06/07 Original Contract Duration: 251 CD Current Contract Duration: 281 CD Elapsed Time from NTP: 281 CD	<table border="1" style="width: 100%; border-collapse: collapse;"> <thead> <tr> <th></th> <th>Original Contract Dates</th> <th>Time Extension</th> <th>Current Contract</th> <th>Forecast</th> <th>Variance CDs</th> </tr> </thead> <tbody> <tr> <td>Notice to Proceed</td> <td>02/06/07</td> <td>0</td> <td>02/06/07</td> <td>02/06/07</td> <td>0</td> </tr> <tr> <td>Milestone 1 - Substantial Completion</td> <td>10/15/07</td> <td>30</td> <td>11/14/07</td> <td>11/14/07</td> <td>0</td> </tr> </tbody> </table>		Original Contract Dates	Time Extension	Current Contract	Forecast	Variance CDs	Notice to Proceed	02/06/07	0	02/06/07	02/06/07	0	Milestone 1 - Substantial Completion	10/15/07	30	11/14/07	11/14/07	0
	Original Contract Dates	Time Extension	Current Contract	Forecast	Variance CDs														
Notice to Proceed	02/06/07	0	02/06/07	02/06/07	0														
Milestone 1 - Substantial Completion	10/15/07	30	11/14/07	11/14/07	0														
<b>Physical Percent Complete:</b>  Physical completion as of 11/14/07: 100.00% *  * As reported by the City of Los Angeles, Department of Contract Administration	<b>Cost Summary: \$ In millions</b> 1. Award Value: * 4.26 2. Executed Modifications: 0.00 3. Approved Change Orders: 0.05 4. Current Contract Value (1+2+3): 4.31 5. Incurred Cost: 4.31  * City of Los Angeles																		

## CONTRACT P2550 STATUS

<b>Description: 2550 Rail Vehicle Program</b> <b>Contractor: AnsaldoBreda, Italy (AB)</b>		<b>Contract No. P2550</b> <b>Status as of: November 30, 2007</b>					
<b>Progress/Work Completed:</b> 1. Project Management has been assigned to a new Project Team consisting of a new Project Director, a new Project Manager, a new Contract Manager and a new on-site Vehicle Commissioning Manager for vehicle testing and acceptance activities. 2. Pilot Vehicles 701 & 702 are used as initial system training vehicles for maintenance staff. Next action is to transport vehicles to Pittsburg for upgrade. Schedule TBD. 3. Vehicle final assembly work continues in Pittsburg, CA. 4. Shipment of foreign and domestic parts for final assembly continue to arrive in Pittsburg, CA. 5. Vehicle shipment from Italy to Pittsburg and from Pittsburg to Los Angeles is on hold until quality issues are resolved. 6. AB Management Team from Italy and Pittsburg met MTA Project Team and discussed addition of new AB staff to support the project. Several Engineering meetings with AB have been held to evaluate progress and to close open items. 7. EMI and TWC/ATP Testing have been ongoing at Metro. <b>Areas of Concern:</b> Several time critical open items have been identified by the new Project Team prior to acceptance of Vehicles # 706 & #708. These include, but not limited to, Vehicle Electro Magnetic Interference (EMI), ATP/TWC Systems and safety certification process. Vehicle coupling issues have been resolved.		<b>Major Activities (In Progress):</b> 1. AnsaldoBreda's manufacturing plants in Pistopia and Naples, Italy continue to prepare carshells and subassemblies for shipment to U.S.A.. 2. Shipment by U.S. flag vessels to U.S. in review with MARAD. Potential agreement between AB and U.S. flag shipper in the works. 3. Testing of Vehicles #706 & #708 is ongoing in Los Angeles. Vehicles are also being worked upon to close quality open items.  <b>Major Activities Next Period:</b> 1. Several Technical Progress meetings will be held to emphasize the urgency of resolution of critical items identified under Areas of Concern. 2. Several tests are in progress and will continue. These include EMI Testing, Floor Fire Endurance Test, ATP/TWC Signal System Test among others.					
			Original Contract Dates	Quantity	Contract Total Quantity	Balance Due	Transferred from FA to Metro
<b>Schedule Summary:</b> Date of Award: 04/24/03 Notice to Proceed: 06/06/03  Original Contract Duration: 1442 CD  Elapsed Time from NTP: 1638 CD  <b>Note:</b> Metro and AnsaldoBreda agreed to Mod No. 4 which extended the Option One ordering period from April 2006 to April 2008, effective May 14, 2007.  Metro has requested an updated schedule from AB to determine the estimated completion schedule. However, AB and Metro are currently expediting the acceptance testing of 2 LRVs which, per AB, is expected to be completed by the end of December 2007.		<b>Notice to Proceed</b>	6/6/2003A				
		<b>Vehicles Assembled</b>		22	50	28	9
		<b>LRV Delivery to Commissioning Site - Metro *</b>		0	50	50	
		<b>LRV Accepted for Revenue Service by Metro</b>		0	50	50	
		<b>LRV in Revenue Service</b>		0	50	50	
		* Delivery is defined as arrival in final configuration to immediately commence inspection and pre-acceptance testing.					
<b>Physical Percent Complete:</b>  Percent of LRVs assembled = 22/50 = 44%  Percent Work Product Invoiced through Oct. 2007 is 44%		<b>Cost Summary: \$ In millions</b> 1. Award Value: Pasadena (Proj. No.: 800151) 126.99 Eastside Ext. (Proj. No.: 800088) 31.75 Total Award Value 158.74 2 Executed Modifications 0.00 3 Approved Change Orders: 0.00 4 Current Contract Value (1 + 2 + 3): 158.74 5 Payments or invoices in process: 67.50					



## **CONSTRUCTION PHOTOGRAPHS**



View of Little Tokyo/Arts District Station looking south.



Pico/Aliso Station TCC room construction.

## **CONSTRUCTION PHOTOGRAPHS**



Placement of entrance invert slab concrete at Boyle Heights Mariachi Plaza Station.



Maravilla Station construction.



## CONSTRUCTION PHOTOGRAPHS



View of LRT guideway construction looking east towards the 1st Street Bridge.



Atlantic/Pomona Station canopy fabrication.

## **APPENDIX**

### **COST AND BUDGET TERMINOLOGY**

**ESTIMATED PROJECT COSTS:** Estimated project costs are based upon the current project cost estimates that are produced during the engineering design phase.

**COMMITMENTS:** The total of actual contract awards, executed change orders or amendments, approved work orders of Master Cooperative Agreements, offers accepted for purchase of real estate, and other LACMTA actions that will result in specific expenditures at a future time.

**INCURRED COST:** The total value of work performed to date of services received, and acquired materials or properties.

**EXPENDITURES:** The total dollar amount of checks written by the LACMTA's Accounting department for contractor or consultant invoices, third party invoices, staff salaries, and closing payments for escrow accounts that is reported in the LACMTA's Financial Information System (FIS).

**CONSTRUCTION:** Includes guideways, yards and shops, systems equipment, stations, and vehicles.

**PROFESSIONAL SERVICES:** Includes general engineering, construction management services, consultant design support services during construction, legal counsel, and agency (LACMTA staff) costs.

**RIGHT-OF-WAY:** Includes real estate appraisals, purchase cost of parcels, easements, right-of-entry permits, escrow fees, and tenant relocation.

**UTILITY/AGENCY FORCE ACCOUNT:** Includes work by outside agencies and utilities in design coordination and review.

**CONTINGENCY:** A fund established at the beginning of a project to provide for anticipated but unknown additional costs that may arise during the course of the project.

**SPECIAL CONDITIONS:** Includes utilities relocation, environmental compliance and mitigation, master cooperative agreements, insurance program, artwork, systems integration testing and pre-revenue operations.

## **APPENDIX**

### **LIST OF ACRONYMS**

AFE	Authorization For Expenditure
ATC	Automatic Train Control
CADD	Computer Aided Drafting and Design
CALTRANS	California Department of Transportation
CD	Calendar Day
CM	Construction Manager
CMAQ	Congestion Mitigation Air Quality
CN	Change Notice
CO	Change Order
CNFPA	Concurrent Non-FFGA Project Activities
CPM	Critical Path Method
CPUC	California Public Utilities Commission
CR	Camera Ready
CTC	California Transportation Commission
CUD	Contract Unit Description
DB	Design/Build
DBB	Design/Bid/Build
DD	Design Development
DOT	Department of Transportation
DWP	Department of Water and Power
EIR	Environmental Impact Report
EIS	Environmental Impact Statement
EPBM	Earth Pressure Balance Machine
ESP	Eastside LRT Partners
FAR	Federal Acquisition Regulation
FD	Final Design
FEIS	Final Environmental Impact Statement
FEIR	Final Environmental Impact Report
FFGA	Full Funding Grant Agreement
FIS	Financial Information System
FSEIR	Final Supplemental Environmental Impact Report
FSEIS	Final Supplemental Environmental Impact Statement
FTA	Federal Transit Administration
FTE	Full Time Equivalent
GDSR	Geotechnical Design Summary Report
IFB	Invitation for Bid
IPO	Integrated Project Office
JV	Joint Venture
LA	Los Angeles
LABOE	Los Angeles Bureau of Engineering
LACFCD	Los Angeles County Flood Control District
LACMTA	Los Angeles County Metropolitan Transportation Authority
LADOT	Los Angeles Department of Transportation

**APPENDIX**  
**LIST OF ACRONYMS (Continued)**

LADPW	Los Angeles Department of Public Works
LADWP	Los Angeles Department of Water and Power
LAUSD	Los Angeles Unified School District
LNTF	Limited Notice To Proceed
LONP	Letter Of No Prejudice
LRT	Light Rail Transit
LRTP	Long Range Transportation Plan
LRV	Light Rail Vehicle
MIS	Major Investment Study
MPSR	Monthly Project Status Report
N/A	Not Applicable
NEPA	National Environmental Protection Act
NPDES	National Pollution Discharge Elimination System
NTE	Not to Exceed
NTP	Notice To Proceed
OCIP	Owner-Controlled Insurance Program
P3	Primavera Project Planner® (scheduling software)
PC	Project Control
PE	Preliminary Engineering
PEER	Permit Engineering Evaluation Report
PGL	Pasadena Gold Line
PIP	Project Implementation Plan
PM	Project Manager
PMA	Project Management Assistance
PMIP	Project Management Implementation Plan
PMOC	Project Management Oversight Consultant
PMP	Project Management Plan (manual)
P&P	Policies & Procedures
PR	Project Report
PSR	Project Study Report
QA	Quality Assurance
QAR	Quality Assurance Report
QC	Quality Control
QPSR	Quarterly Project Status Report
RAC	Review Advisory Committee
RAG	Rail Activation Group
RFC	Request For Change
RFP	Request For Proposal
ROD	Record Of Decision
ROD	Revenue Operations Date
ROM	Rough Order of Magnitude

**APPENDIX**  
**LIST OF ACRONYMS (Continued)**

ROW	Right-Of-Way
SCAQMD	Southern California Air Quality Management District
SCE	Southern California Edison
SCRRA	Southern California Regional Rail Authority
SHA	State Highway Account
SHPO	State Historic Preservation Office
SIT	System Integration Testing
SOV	Schedule Of Value
SOW	Statement Of Work
SP	Special Provision
STIP	State Transportation Improvement Program
STP	Surface Transportation Program
TBD	To Be Determined
TBM	Tunnel Boring Machine
TCRP	Traffic Congestion Relief Program
TPSS	Traction Power Substation
TRACS	Transit Automatic Control System
UFS	Universal Fare System
USDOT	U.S. Department Of Transportation
VE	Value Engineering
WBS	Work Breakdown Structure
WP	Work Package