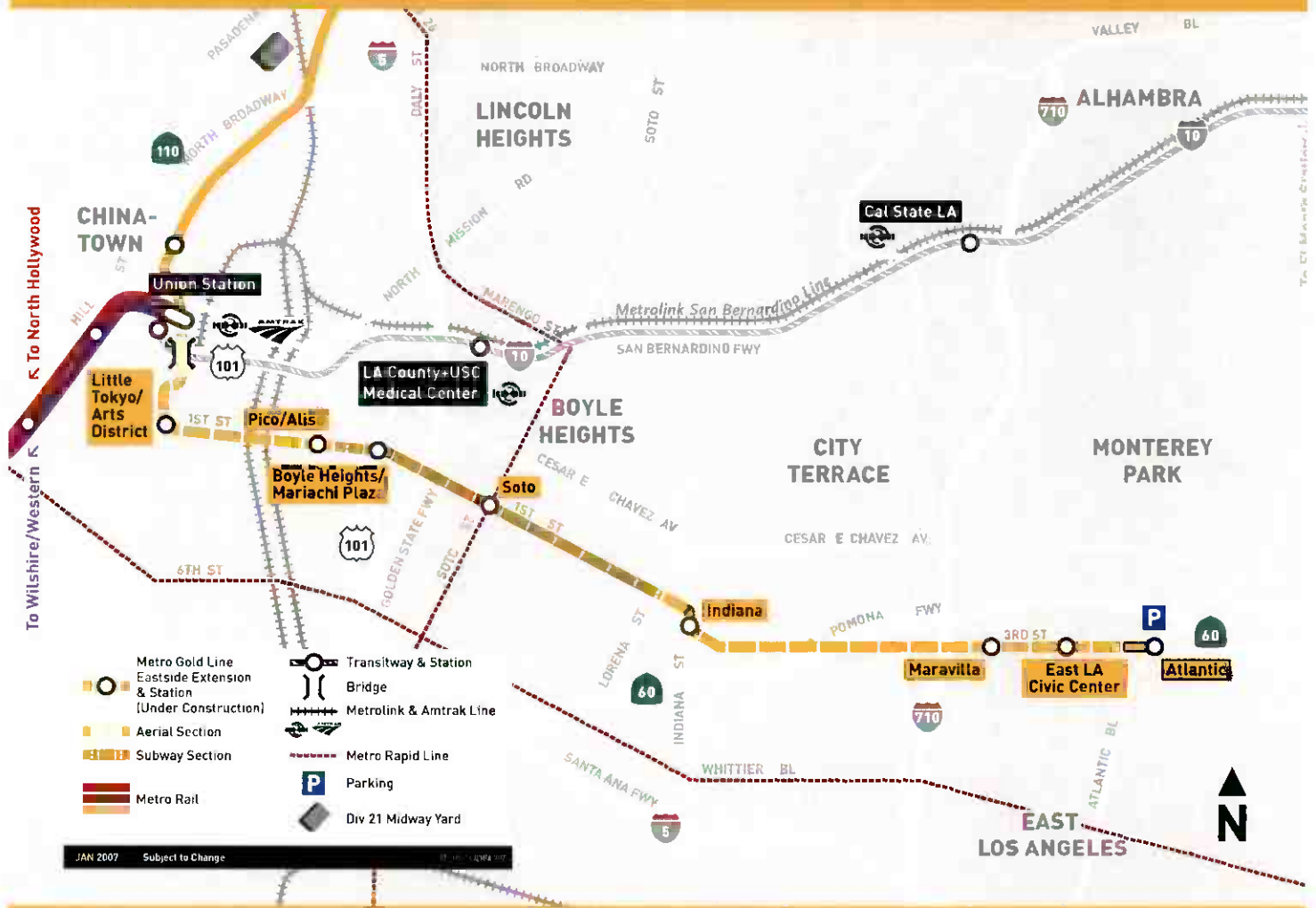


Metro Gold Line Eastside Extension

October 2007



METRO GOLD LINE EASTSIDE EXTENSION

MONTHLY PROJECT STATUS REPORT

THE PREPARATION OF THIS DOCUMENT HAS BEEN FINANCED IN PART THROUGH A GRANT FROM THE U. S. DEPARTMENT OF TRANSPORTATION, FEDERAL TRANSIT ADMINISTRATION (FTA), UNDER THE FEDERAL TRANSIT ACT OF 1964, AS AMENDED, AND FUNDS FROM THE STATE OF CALIFORNIA.

OCTOBER 2007

TABLE OF CONTENTS

	Page No.
Project Overview & Status.....	1-3
Management Issues.....	3
Project Status	
• Project Scope.....	4
• Schedule	
○ Key Milestones Six-Month Lookahead	5
○ Project Master Schedule Critical Path.....	6-10
○ Critical Path Narrative.....	11
• Project Cost Status.....	12-13
• Financial/Grant Status.....	14-15
• Staffing.....	16-18
• Real Estate.....	19
• Environmental.....	20
• Community Relations.....	20
• Quality Assurance.....	21
• Safety.....	21
• Art Development.....	21
• Third Party.....	22-23
• CPUC Crossing.....	24
Contract C0802 Status	25
Contract C0803 Status	26
Contract E700051F Status.....	27
Contract P2550 Status	28
Construction Photographs	29-31
Appendices.....	32-35

PROJECT OVERVIEW & STATUS

The Metro Gold Line Eastside Extension Project is a six-mile, dual track light rail system with eight new stations and one station modification. The system originates at Union Station in downtown Los Angeles, where it connects with the Pasadena Gold Line, traveling generally east to Pomona and Atlantic Boulevards. The system will bridge State Route 101 Freeway and traverse the existing 1st Street Bridge over the Los Angeles River. The system will travel south on Alameda Street and then east on 1st Street with two stations at Alameda and Utah Streets. East of the Los Angeles River and 1st and Utah Streets, the alignment transitions to tunnel for approximately 1.7 miles, and continues beneath 1st Street to underground stations at 1st Street and Boyle Avenue and 1st Street and Soto Street. The alignment returns to the surface near the intersection of 1st Street and Lorena Streets, then jogs to the south, transitioning to follow 3rd Street with stations at Indiana Street, Ford Boulevard, Mednik Avenue and Pomona and Atlantic Boulevards.

During this period, the Train Control and Communications design packages were Issued for Construction (IFC). This completes all Systems Design Packages. Advanced Partial Unit Design Approved for Construction (AFC) packages pertaining to Segments 3C and 4B were approved. Segments 3A and 3B AFC design packages are also underway.

Procurement of the City of Los Angeles 1st Street Bridge Phase III Widening Project continued per plan. The bid documents were made available to bidders on October 12, 2007. Bids are due by November 28, 2007. The Phase III completion may impact the construction of the project guideway/trackwork on the bridge.

Underground construction is proceeding per plan. The electrical subcontractor this period continued raceway installation in both tunnels between the Soto Station and the East Portal. Also, the electrical subcontractor continued conduit installation in both tunnels between Soto Station and the East Portal. A portion of the installed conduit under the walkway will have to be removed and relocated to the embedded track to satisfy Safety Code requirements. The schedule will not be impacted.

At the Boyle Heights/Mariachi Plaza Station, construction crews completed installation of mezzanine level exterior walls on the north and south sides. Construction of the wall at the bulkhead, as well as the interior walls is proceeding per plan. Also this period, the station entrance excavation was completed as well as the support structure. The station entrance invert slab construction also started with installation of the HDPE protection membrane and the concrete pour for the protection slab.

At the Soto Station, field crews completed installing the shoring system for the mezzanine slab and started placing rebar, embeds and forms for the slab starting at the west end of the station. The mezzanine slab from grid lines 1 to 8 was poured in two sections this period. Also, construction of mezzanine walls at the station entrance was completed.

At the West Portal, construction crews completed concrete pours for the barrier walls at street level. The installation of concrete walkways began this period.

At the East Portal, construction of the last portal structural section next to the hammerhead continued per plan. Field crews completed concrete pours for the invert slab and started constructing the exterior walls at track level. Installation of HDPE protection completed this period and placing rebar, embeds and forms is progressing per schedule.

PROJECT OVERVIEW & STATUS

At-grade construction is proceeding according to plan. Construction of the temporary baggage-handling road at Union Station is underway. Field crews completed the C0802 bridge closure walls and began the foundation work for CMU walls. Along Alameda Street (Segment 1), installation of the Mechanically Stabilized Earth (MSE) wall continued. The last row of precast panels north of Temple Street was erected and compaction of the last lift continues. Also, guideway construction at the intersection of Alameda and Temple Streets completed this period.

Along 1st Street between Alameda and Vignes Streets (Segment 2A), construction of the guideway continued per schedule. South of Vignes Street, field crews completed installation of a temporary road over the existing track, which will route west bound traffic at the end of the 1st Street Bridge. This allowed guideway construction at the intersection of 1st Street and Vignes Street to begin this period. In a separate segment, also along 1st Street east of Los Angeles River (Segment 2B), guideway construction resumed from Mission Road to Clarence Street, where excavation of the Pico/Aliso Station TC&C room completed this period. Also, the mobile rail welding shop was relocated to the area between Clarence and Gless Streets, where welding rail for the tunnels and underground stations will begin next period.

Construction along 1st Street, between Lorena and Indiana Streets in Segment 4A continued per schedule. The street widening of the north side completed this period and at the south side, field crews completed demolition and began placing new curb and gutter, and sidewalks.

Construction along 3rd Street between Ditman and Eastern Avenues in Segment 5 continued according to plan. At the intersection of 3rd Street and Ditman Avenue construction crews completed street improvements on the south side of the intersection. Guideway construction continued between Gage and Rowan Streets, where fine grading and track installation continued this period. Between Downey Road and Herbert Avenue, installation of OCS poles began and at Sunol Road and 3rd Street, construction of TPS-04 substation continued per schedule. Field crews placed power feed conduit and vaults at this location.

Between Mednik and Eastern Avenues (Segment 6), guideway construction also continued per plan. Field crews continued installing embedded rail and track plinth between Eastern Avenue and Ford Boulevard as well as underground conduit and foundations for train control devices and cabinet cases. Installation of OCS poles in this segment started this period.

At the east end of the alignment along 3rd Street between Atlantic Boulevard and Mednik Street (Segment 7), guideway construction is near completion. Field crews completed excavation and fine grading at the remaining track segment, the track crossover west of Woods Avenue. At Atlantic Boulevard and Pomona, construction at the TPS-06 site began. The CMU wall foundations completed this period as well as the installation of the block wall. The systems contractor completed the underground installation of train control devices.

PROJECT OVERVIEW & STATUS

In other areas of the alignment, at-grade station construction continues according to plan. At the Atlantic Station, construction crews poured the canopy concrete columns and began erection of steel canopy sections. At the East Los Angeles Civic Center Station, field crews completed installation of embedded track. At Maravilla Station, the station platform walls and deck were poured this period. At Indiana Station, the TC&C room concrete walls were poured as well as platform invert slab and walls. Construction crews began installing rebar, embed and forms for the station platform deck.

The City of Los Angeles contractor for the 1st Street Viaduct Bridge Widening Project, Phase II Girder Strengthening, completed the remaining middle section of the bridge above the arch. The reinforced concrete girder beams and waffle slab were poured this period and k-rail was installed on the north end of the bridge. The City of Los Angeles turned the west section of the bridge to Metro on October 12, 2007 so that the C0803 contractor could begin guideway construction. Although removal of false work and change work continues, the City of Los Angeles turned the remaining sections of the bridge over to Metro on October 26, 2007.

The fabrication and delivery of 50 light rail vehicles (LRV's), Contract No. P2550, continues per the revised plan. Ten vehicles are required for the Metro Gold Line Eastside Extension Project. Fabrication of car assemblies is done at the contractor's plant in Italy and final assembly and testing is done at the contractor's facility in California. To date, a total of nine vehicles are going through the pre-acceptance process before entering the final inspection and commissioning phase. Three completed vehicles in the final configuration are scheduled for delivery to the commissioning site next period. The current delivery schedule supports the project systems integration testing and pre-revenue phases.

The Universal Fare System (UFS) equipment fabrication is proceeding per the revised plan. The vendor's fabrication schedule is two months and will begin in December 2007. Metro staff has determined that in order to minimize the risk of equipment damage and vandalism, equipment installation will be deferred to the period of Pre-Revenue Operations. Therefore, it will be necessary for the vendor to store the completed equipment at the vendor's facility until the equipment is required for installation.

The Metro Art Department continued providing technical support and coordination between the C0803 contractor and the artists responsible to provide art pieces for the eight stations. The artists continue to finalize the art design and the development of shop drawings with multiple fabricators. Metro and ELRTC staff this period continued reviewing engineering specifications, and foundation and support calculations for the art pieces.

MANAGEMENT ISSUES

No Management Issues for the period ending October 2007.

PROJECT SCOPE

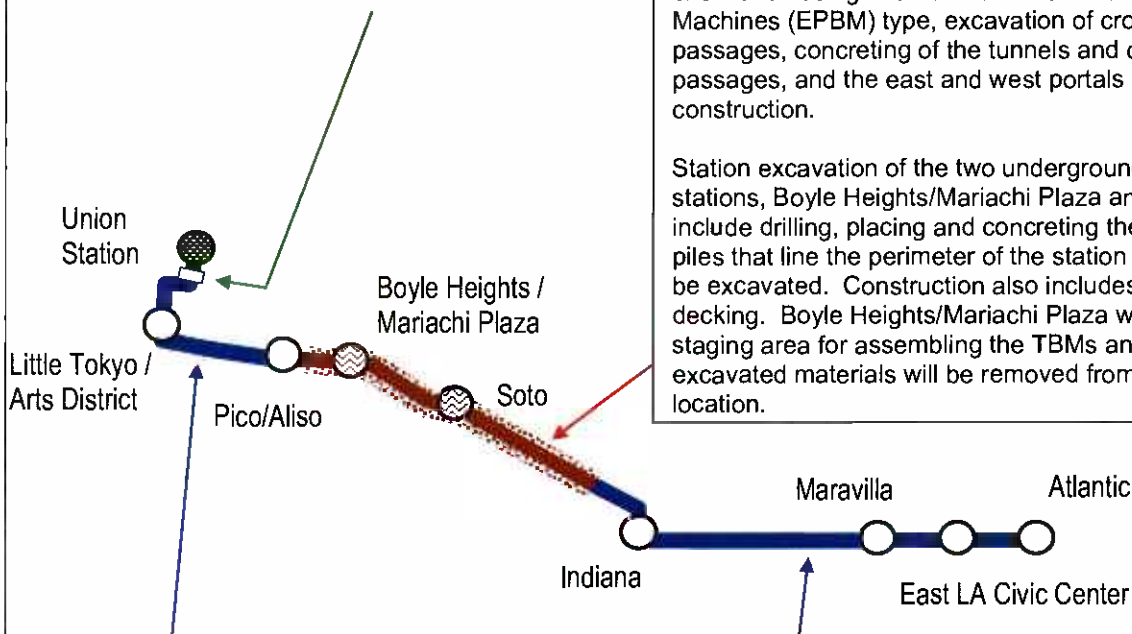
Contract C0802 – 101 Freeway Bridge

Overcrossing: The construction of the bridge was combined with Caltrans freeway improvements project. Caltrans administered the construction and the LACMTA provided oversight and was responsible for the construction costs of the bridge overcrossing.

Contract C0803 - Tunnel and Station

Excavation (Design/Bid/Build): Construction of the 1.7 mile tunnel segment included tunnel excavation using two Earth Pressure Balance Machines (EPBM) type, excavation of cross passages, concreting of the tunnels and cross passages, and the east and west portals construction.

Station excavation of the two underground stations, Boyle Heights/Mariachi Plaza and Soto, include drilling, placing and concreting the soldier piles that line the perimeter of the station box to be excavated. Construction also includes street decking. Boyle Heights/Mariachi Plaza will be the staging area for assembling the TBMs and all excavated materials will be removed from this location.



Contract C0803 - Stations, Trackwork, and Systems (Design/Build): Construction of the two underground stations includes structural walls, station platforms, mezzanines, station entrances, and plazas, architectural finishes and all related mechanical and electrical work.

Construction of the six-mile alignment includes six at-grade stations, trackwork installation and testing for the entire alignment.


Systems installation and testing is inclusive of power systems, automatic train control, fire and emergency management, TRACS and communications systems. The contractor will be responsible for systems integration testing for the entire line segment prior to pre-revenue operations.



Metro Gold Line Eastside Extension
Monthly Project Status Report


October 2007

KEY MILESTONE SCHEDULE SIX-MONTH LOOKAHEAD

	Milestone Date	Oct-07	Nov-07	Dec-07	Jan-08	Feb-08	Mar-08
City of Los Angeles Issued for Bid First Street Bridge Phase III Widening Contract	10/12/07	△					
Started Guideway Construction on the First Street Bridge	10/15/07 *	○					
Started Station Canopy Installation - Atlantic Station	10/15/07 *	○					
Started Installation of Overhead Contact System Equipment - Segment 7 East End of the Alignment	10/23/07 *	○					
City of Los Angeles Completed First Street Bridge Phase II Girder Strengthening Contract	10/26/07 *	△					
Complete Mezzanine Level Walls at Boyle Heights/Mariachi Plaza Station	11/07/07 *		○				
Complete Mezzanine Slab at Soto Station	11/15/07		○				
Complete MSE Wall From Commercial Street to Alameda Street - Segment 1	11/20/07 *		○				
Start Rail Installation in the Tunnels	11/26/07 *		○				
Complete All Design Approved for Construction (AFC)	11/30/07 *		○				
Start Installation of Cable Transmission System - Segment 7 East End of the Alignment	12/12/07 *			○			
Complete Civil Guideway Construction - Segment 7 East End of the Alignment	12/17/07 *			○			
Deliver the First Traction Power Substation - TPS-06	12/23/07			○			
City of Los Angeles Award First Street Bridge Phase III Widening Contract	12/28/07 *			△			
Start Construction of the Boyle Heights/Mariachi Plaza Station Platform	01/08/08 *				○		
Complete Mezzanine Level Walls at Soto Station	01/30/08				○		
Complete Temporary Baggage Handling Road at Union Station	02/06/08 *					○	
Complete Civil Guideway Construction - Segments 2A and 2B	02/22/08 *					○	
Complete Construction at the East Portal Structure	03/13/08 *						○
Complete At-Grade Stations Canopy Installation	03/21/08 *						○
Start Installation of the Radio System in the Tunnels	03/26/08						○

 LAC MTA Staff Milestone
 Other Agencies

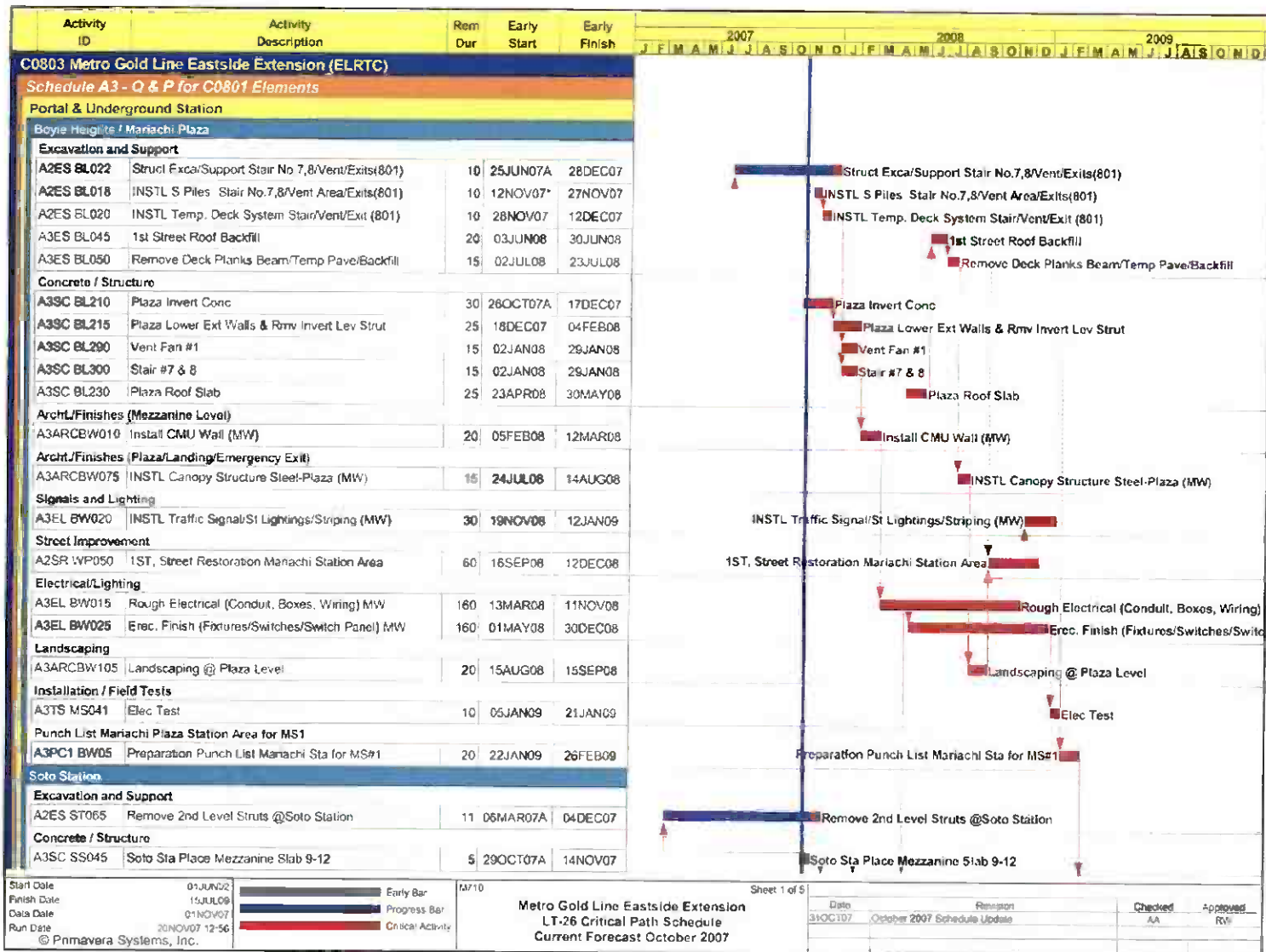
 Eastside LRT Constructors
 New Date

FTA
 **Metro**

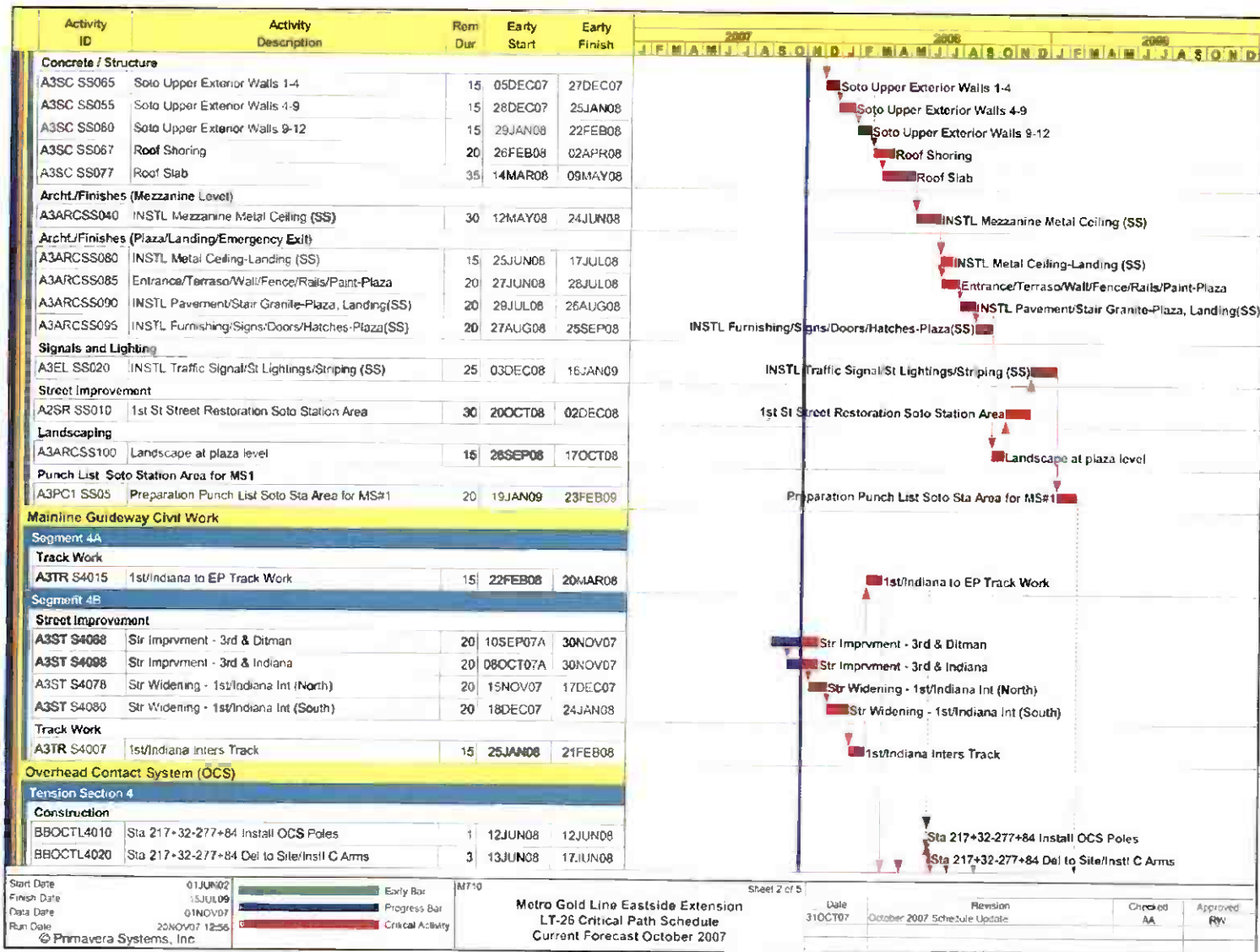
FTA Approval
LAC MTA Board Approval

Six-month lookahead schedule for Contract C0803 reflects the contractor's current CPM schedule.

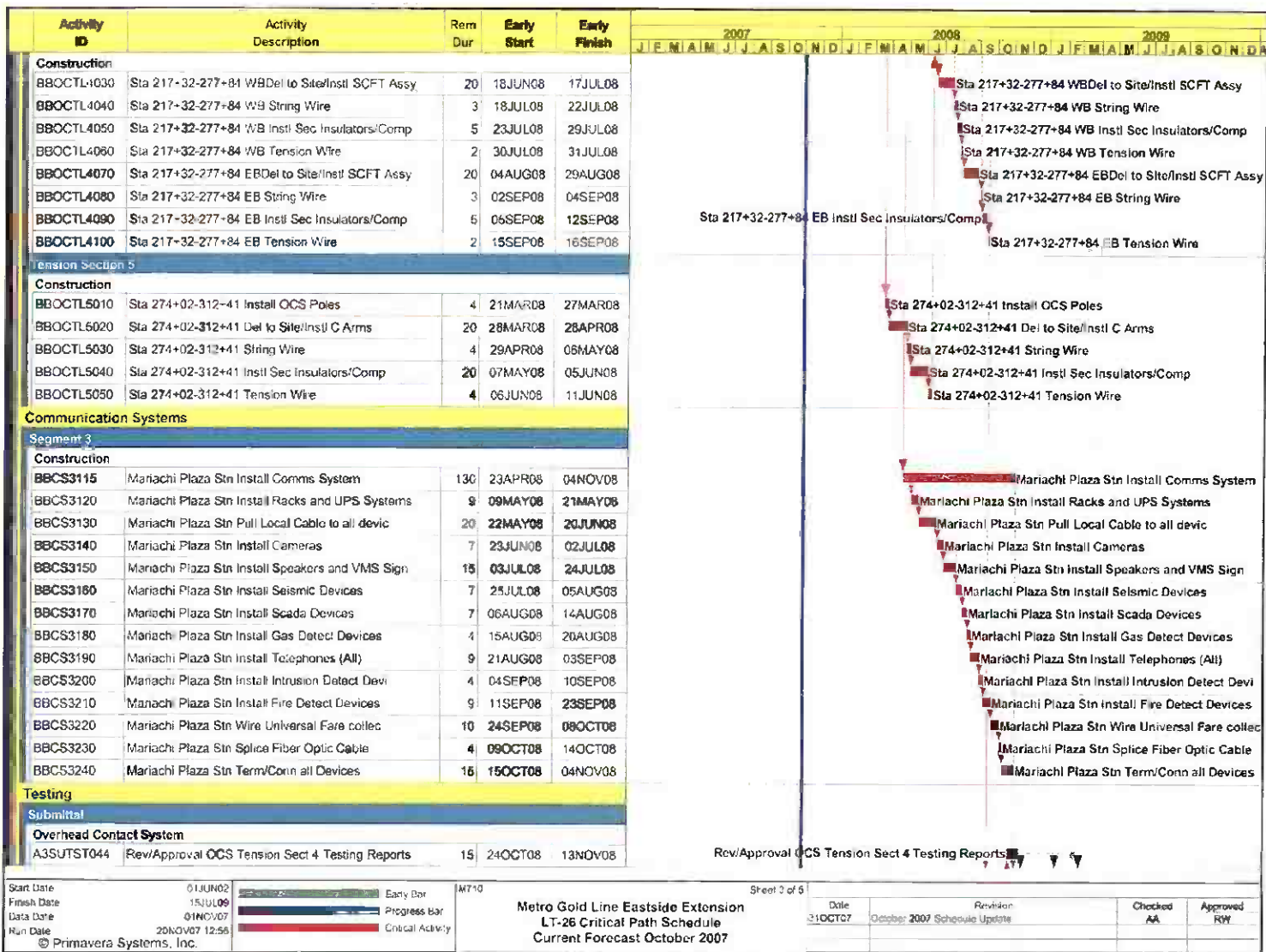
PROJECT MASTER SCHEDULE
CRITICAL PATH (1 of 5)



PROJECT MASTER SCHEDULE
CRITICAL PATH (2 of 5)



PROJECT MASTER SCHEDULE
CRITICAL PATH (3 of 5)

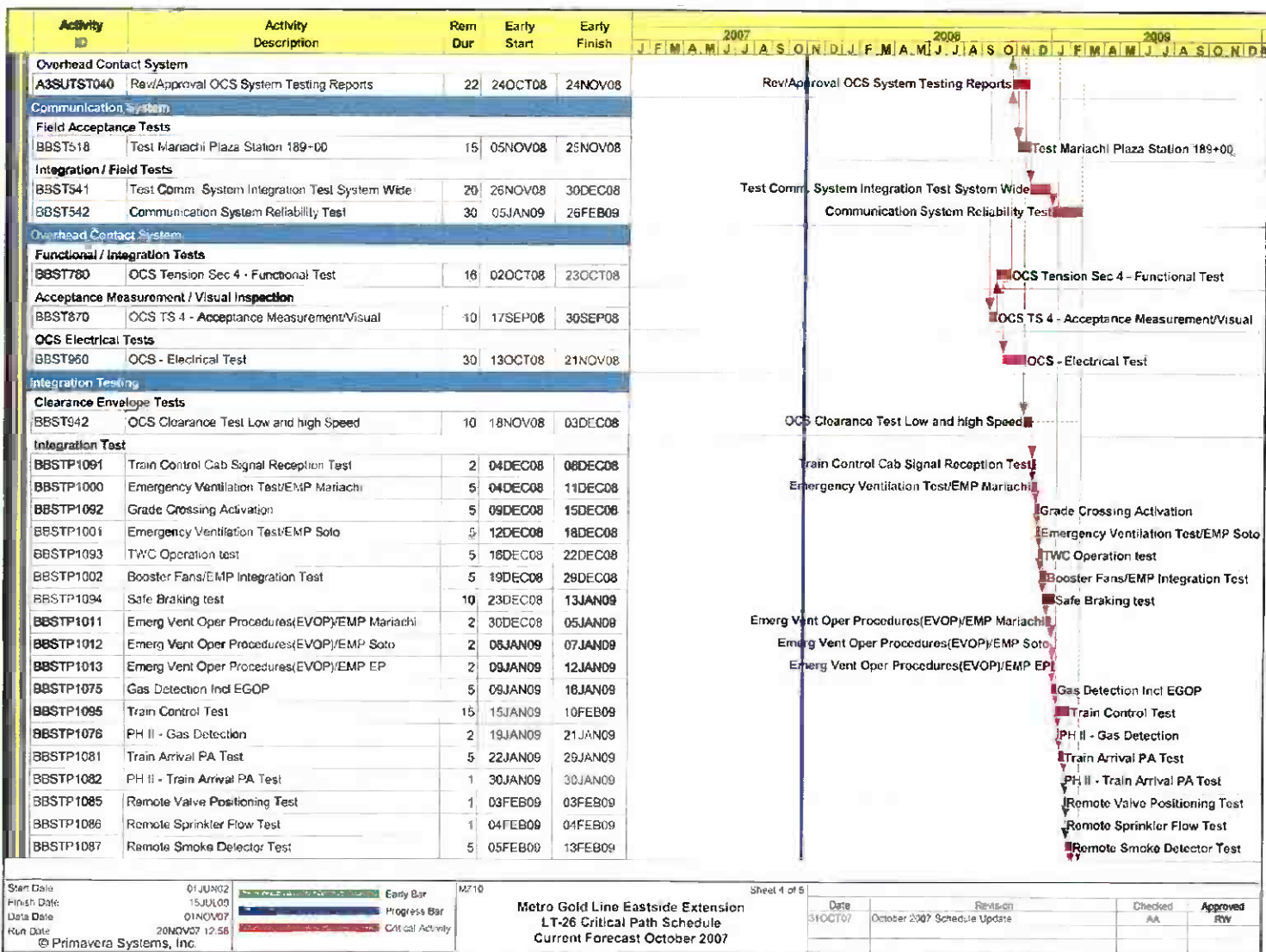


Start Date 01JUN02
Finish Date 15JUL09
Data Date 01NOV07
Run Date 20NOV07 12:56
© Primavera Systems, Inc.

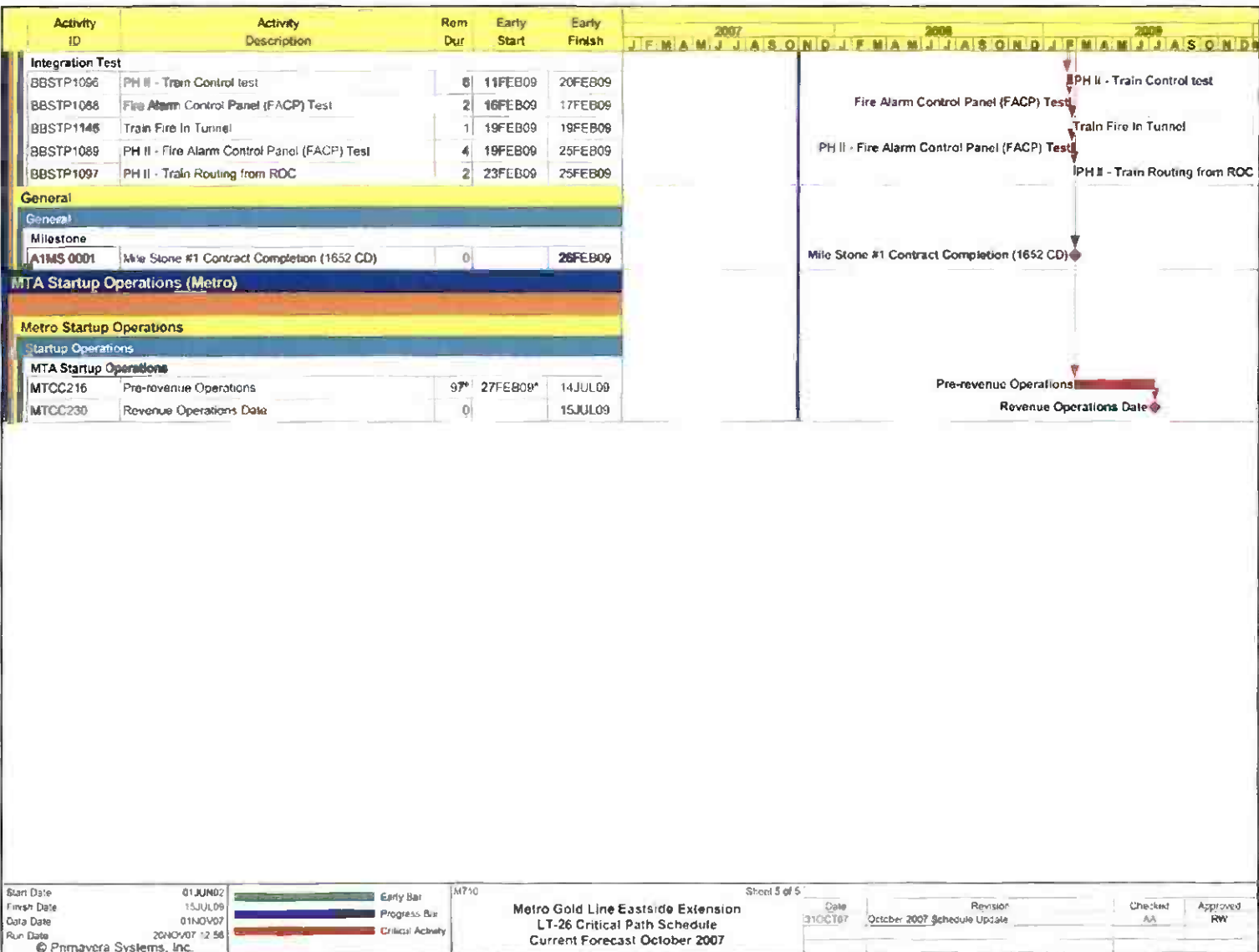
M710
Metro Gold Line Eastside Extension
LT-26 Critical Path Schedule
Current Forecast October 2007

Sheet 3 of 5
Date 31OCT07
Revision October 2007 Schedule Update
Checked AA
Approved RW

PROJECT MASTER SCHEDULE CRITICAL PATH (4 of 5)



PROJECT MASTER SCHEDULE CRITICAL PATH (5 of 5)



CRITICAL PATH NARRATIVE

Current Critical Path Analysis

The critical construction of Boyle Heights/Mariachi Plaza Station mezzanine level interior walls and roof, and the Soto Station mezzanine level exterior walls is proceeding per plan. Street widening and guideway construction along Segments 4A and 4B of the alignment is also on the project critical path. The C0803 contractor continues reporting their overall progress to have been impacted by Segment 4B design and construction changes. The design issues are currently being addressed and Metro feels that opportunities will be available in follow-on activities to make up for impacts to the construction and testing schedule. Once the C0803 contractor presents a mitigation plan that addresses these delays, any remaining schedule impact will be assessed and reported.

The C0803 contractor has expressed concerns that without the completion of Phase III of the 1st Street Bridge Widening Project, construction delays are expected with trackwork and systems installations on the bridge, which may impact the substantial completion of their contract. Metro is addressing these concerns at the present time.

After the completion of roof construction at Boyle Heights/Mariachi Plaza Station and the mezzanine level exterior walls at Soto Station, the project critical path becomes construction completion of the two underground stations and in a parallel path, construction of Segments 2B, 4A and 4B guideway and trackwork. Installation of OCS equipment and local facilities testing are the last stage of the critical path prior to entering the final test stage, where systems integration testing and pre-revenue operations are conducted.

PROJECT COST STATUS

COST REPORT BY ELEMENT ORIGINAL SCOPE ACTIVITIES DOLLARS IN THOUSANDS

ELEM- ENT	DESCRIPTION	ORIGINAL BUDGET	CURRENT BUDGET		COMMITMENTS		EXPENDITURES		CURRENT FORECAST		BUDGET / FORECAST VARIANCE
			PERIOD	TO DATE	PERIOD	TO DATE	PERIOD	TO DATE	PERIOD	TO DATE	
C	CONSTRUCTION	633,221	-	651,961	(1,500)	651,157	525	438,388	-	651,961	-
S	SPECIAL CONDITIONS	19,494	-	43,948	(141)	38,797	1,468	29,569	-	43,948	-
R	RIGHT-OF-WAY	40,358	-	42,299	-	46,182	103	43,676	-	42,299	-
P	PROFESSIONAL SERVICES	135,304	-	135,841	-	125,763	989	112,364	-	135,841	-
PC	PROJECT CONTINGENCY	60,254	-	14,599	-	-	-	-	-	14,599	-
PR	PROJECT REVENUE	(4,617)	-	(4,633)	-	-	-	(44)	-	(4,633)	-
SUBTOTAL		884,014	-	884,014	(1,641)	861,899	3,085	623,952	-	884,014	-
PF	PROJECT FINANCE COST	14,800	-	14,800	380	2,186	380	2,186	-	14,800	-
TOTAL		898,814	-	898,814	(1,261)	864,085	3,465	626,138	-	898,814	-

NOTE: EXPENDITURES ARE CUMULATIVE THROUGH SEPTEMBER 2007

PROJECT COST ANALYSIS

Original Budget

The Full Funding Grant Agreement (FFGA) was adopted June 1, 2004 in the amount of \$898.8 million. The Original Budget reflects the adopted FFGA.

Current Budget and Current Forecast

The Current Budget and Forecast remains the same at \$898.8 million.

Commitments

The Commitments decreased by a total of \$1.3 million this period. In the Construction element there was a decrease of \$1.5 million for executed modifications associated with Contract C0803 – Tunnel, Stations, Trackwork, and Systems for the closeout of tunneling activities. In the Special Conditions element there was a decrease of \$0.1 million for Wet Utilities Shared Incentive Program. And in the Project Finance Cost element there was an increase of \$0.4 million that reflects an interest payment. Interest earned is received monthly and interest payments are made semi-annually. The \$864.1 million in Commitments to date represents 96.1% of the Original Budget.

Expenditures

Expenditures are cumulative through September 2007. The Expenditures increased by \$3.5 million this period due to costs associated with the Wet Utilities Shared Incentive Program, Metro's Administration, Project Finance Costs, Light Rail Vehicles, and Real Estate. The September 2007 invoice for Contract C0803 in the amount of \$10.3 million was posted in the Metro's Financial Information System (FIS) on October 8, 2007 and will be reflected in the next reporting period. The \$626.1 million in Expenditures to date represents 69.7% of the Original Budget.

PROJECT COST STATUS

COST REPORT BY ELEMENT CONCURRENT NON-FFGA PROJECT ACTIVITIES DOLLARS IN THOUSANDS

ELEMENT	DESCRIPTION	ORIGINAL BUDGET	CURRENT BUDGET		COMMITMENTS		EXPENDITURES		CURRENT FORECAST		BUDGET / FORECAST VARIANCE
			PERIOD	TO DATE	PERIOD	TO DATE	PERIOD	TO DATE	PERIOD	TO DATE	
C	CONSTRUCTION	18,000	-	41,174	292	34,519	-	8,010	-	41,174	-
S	SPECIAL CONDITIONS	-	-	2,719	1	1,850	1	1,108	-	2,719	-
R	RIGHT-OF-WAY	-	-	-	-	-	-	-	-	-	-
P	PROFESSIONAL SERVICES	-	-	2,280	-	808	4	119	-	2,280	-
PC	PROJECT CONTINGENCY	-	-	-	-	-	-	-	-	-	-
PR	PROJECT REVENUE	-	-	(4,087)	(292)	(4,536)	-	(279)	-	(4,087)	-
SUBTOTAL		18,000	-	42,086	1	32,640	5	8,957	-	42,086	-
PF	PROJECT FINANCE COST	-	-	-	-	-	-	-	-	-	-
TOTAL		18,000	-	42,086	1	32,640	5	8,957	-	42,086	-

NOTE: EXPENDITURES ARE CUMULATIVE THROUGH SEPTEMBER 2007

PROJECT COST ANALYSIS

Original Budget

The Metro Board adopted the Original Budget of \$18.0 million on March 24, 2005.

Current Budget and Current Forecast

The Current Budget and Forecast remain the same at \$42.1 million.

Commitments

The Commitments increased by a net of \$1K this period. There was an executed contract modification in the amount of \$0.3 million to provide historic street lighting as requested by the City of Los Angeles. Project Revenues collected from the City of Los Angeles will fund this contract modification. There was an increase of \$1K for environmental services provided by the Department of Toxic Substance Control for the rebuild of Ramona Opportunity High School (ROHS). The \$32.6 million in Commitments to date represents 77.6% of the Current Budget.

Expenditures

Expenditures are cumulative through September 2007. The Expenditures increased by \$5K this period due to environmental work associated with the properties on Alma Street for (ROHS) and Metro's Project Administration costs. The September 2007 invoice for Contract C0803 in the amount of \$0.1 million was posted in the Metro's Financial Information System (FIS) on October 8, 2007 and will be reflected in the next reporting period. The \$9.0 million in Expenditures to date represents 21.3% of the Current Budget.

FINANCIAL/GRANT STATUS – ORIGINAL SCOPE ACTIVITIES

OCTOBER 2007		STATUS OF FUNDS BY SOURCE									
SOURCE	(A) ORIGINAL BUDGET	(B) TOTAL FUNDS ANTICIPATED	(C) TOTAL FUNDS AVAILABLE	(D) COMMITMENTS \$	(D/B) %	(E) EXPENDITURES \$	(E/B) %	(F) BILLED TO FUNDING SOURCE \$	(F/B) %		
FEDERAL - SECTION 5309 NEW START	\$490 700	\$490 700	\$255.193	\$468.609	95%	\$299 431	61%	(1)	\$299 431	61%	
FED - SECTION 5309 FIXED GUIDEWAY	\$23 100	\$12 000	\$12 000	\$12.000	100%	\$12 000	100%		\$12.000	100%	
FEDERAL - CMAQ	\$10 300	\$10 300	\$10 276	\$10.276	100%	\$10 276	100%		\$10.276	100%	
REGIONAL IMPROVEMENT PROG - FED	\$179 600	\$4 600	\$4.600	\$4.600	100%	\$4 600	100%		\$4 600	100%	
REGIONAL IMP PROG - STATE	\$0.600	\$175 600	\$131 796	\$175.600	100%	\$131.796	75%		\$131 796	75%	
STATE TCRP	\$45 000	\$45 000	\$45.000	\$45 000	100%	\$45.000	100%		\$45.000	100%	
PROP A 35% / PROP C 40%	\$124.614	\$135 714	\$135 714	\$135.714	100%	\$110.749	82%		\$78.464	58%	
LEASE REVENUES	\$10 100	\$10.100	\$10.100	\$10 100	100%	\$10 100	100%		\$10.100	100%	
ACCRUALS											
SUB-TOTAL	\$884.014	\$884.014	\$604 679	\$861.899	97%	\$623 952	71%		\$591 667	67%	
PROP A / PROP C (INTEREST COST)	\$14.800	\$14.800	\$1 980	\$2 186	15%	\$2 186	15%		(\$0 695)	-5%	
TOTAL	\$898 814	\$898 814	\$606 659	\$864.085	96%	\$626 138	70%		\$590.972	66%	

NOTE: EXPENDITURES ARE CUMULATIVE THROUGH SEPTEMBER 2007.
(1) BILLED EXPENDITURES IN EXCESS OF FUNDS AVAILABILITY ARE TEMPORARILY FUNDED THROUGH BRIDGE FINANCING.

STATUS OF FUNDS ANTICIPATED

FEDERAL SECTION 5309 NEW STARTS: LACMTA has received an appropriation of \$100M through FY07.

RIP-STATE: LACMTA submitted an allocation request of \$43.8 to the CTC for consideration at their July 2007 meeting. The request was approved in October 2007 and funds are available for drawdown.

STATE TCRP: On March 2005, LACMTA resubmitted a request for approval of a LONP for \$189.2M for Phase 4 (Construction) to the CTC for consideration at the May 2005 CTC Meeting. The CTC approved the LONP for \$166.9M and recently revised their guidelines to allow for partial LONP reimbursement prior to phase completion. LACMTA has requested to liquidate the LONP, with an allocation request of \$166.9M that was considered by the CTC at their September 2006 meeting. The allocation request was approved in February 2007.

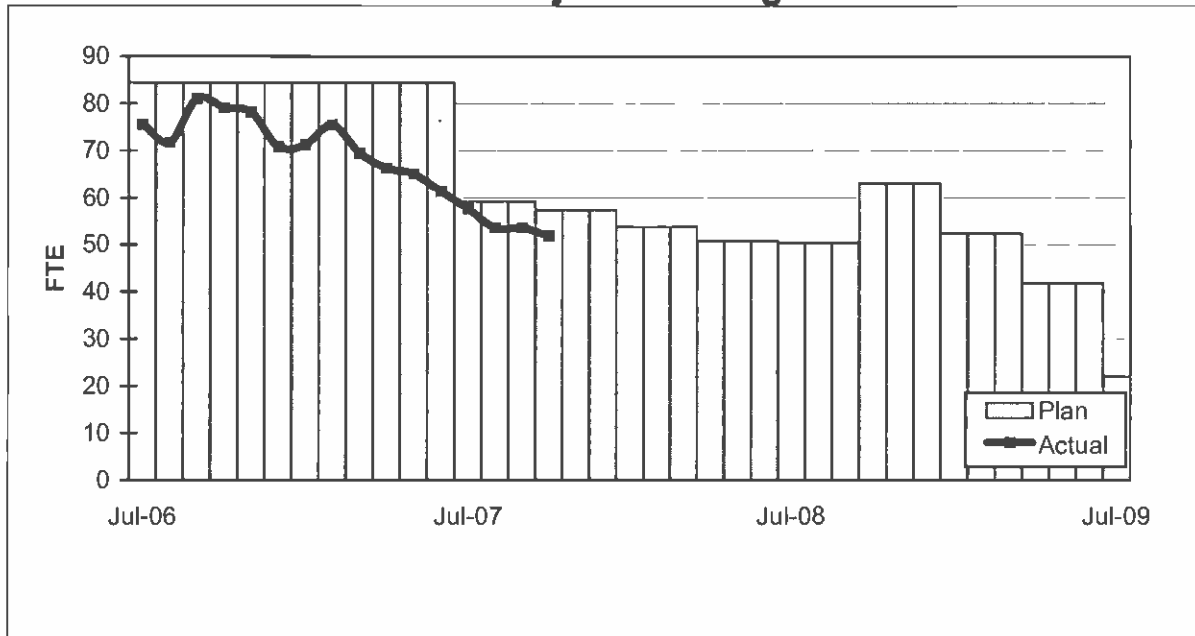
FINANCIAL/GRANT STATUS
CONCURRENT NON-FFGA PROJECT ACTIVITIES

OCTOBER 2007		STATUS OF FUNDS BY SOURCE							
SOURCE	(A) APPROVED BUDGET	(B) TOTAL FUNDS ANTICIPATED (1)	(C) TOTAL FUNDS AVAILABLE	(D) COMMITMENTS \$	(D/B) %	(E) EXPENDITURES \$	(E/B) %	(F) BILLED TO FUNDING SOURCE \$	(F/B) %
PROP C 40%	\$14,000	\$14,000	\$14,000	\$14,000	100%	\$6,524	47%	\$4,932	35%
PROP C 10%	\$4,000	\$4,000	\$4,000						
STATE TCR	\$0.000	\$24,086	\$24,086	\$18,639	77%	\$2,433	10%	\$2,433	10%
TOTAL	\$18,000	\$42,086	\$42,086	\$32,639	78%	\$8,957	21%	\$7,365	17%

NOTE: EXPENDITURES ARE CUMULATIVE THROUGH SEPTEMBER 2007.

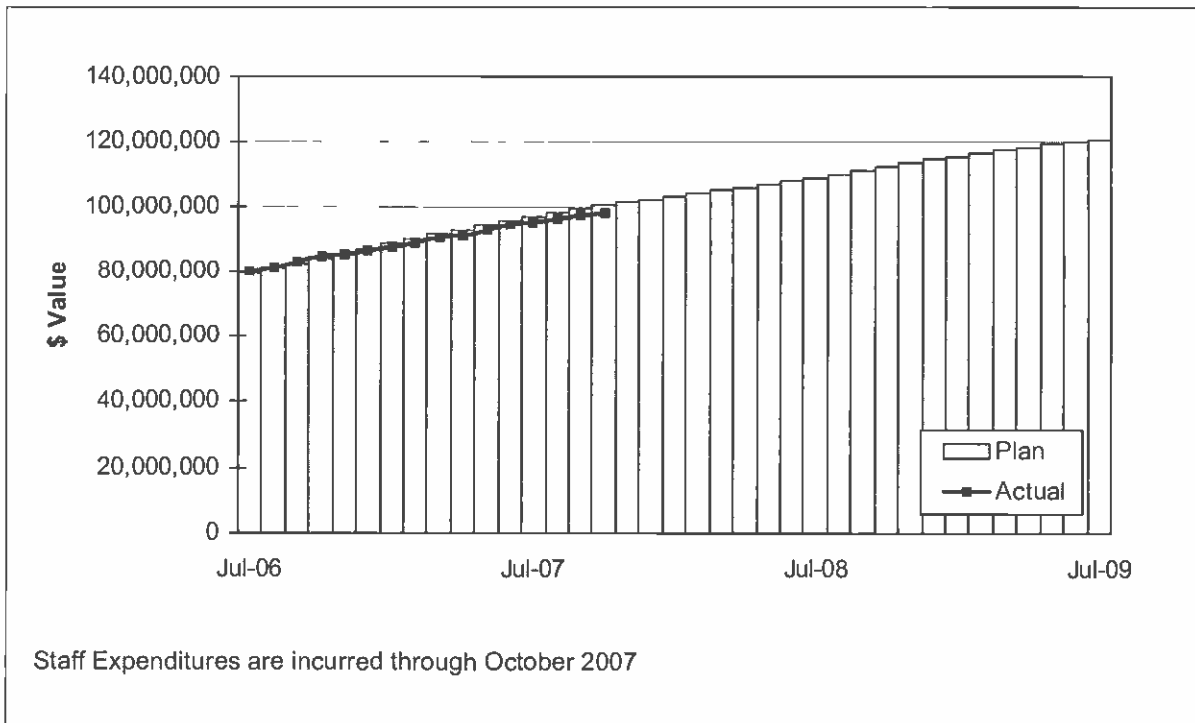
STAFFING STATUS

Total Project Staffing - FTES



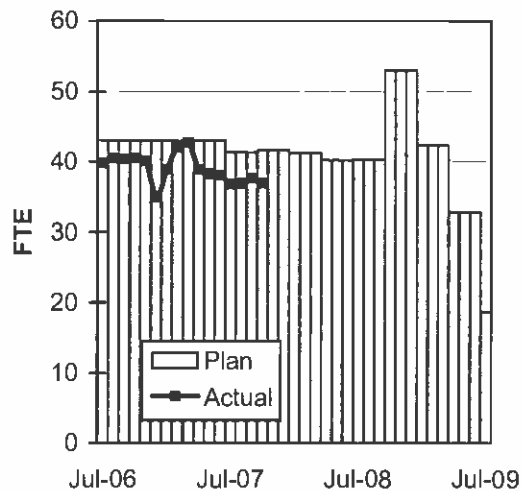
STAFFING STATUS

TOTAL PROJECT STAFFING COST

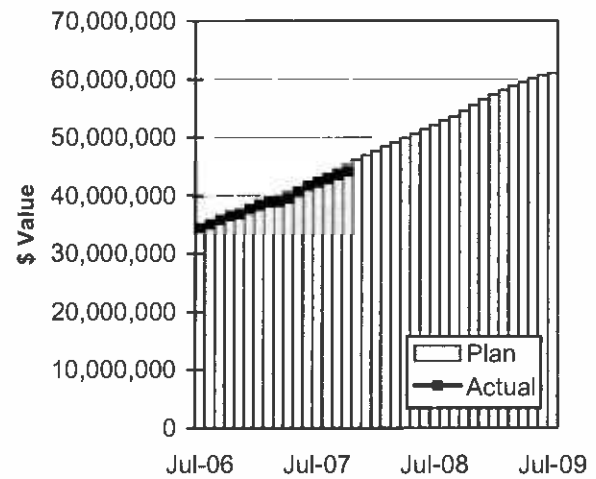


STAFFING STATUS

DIRECT AGENCY - FTES

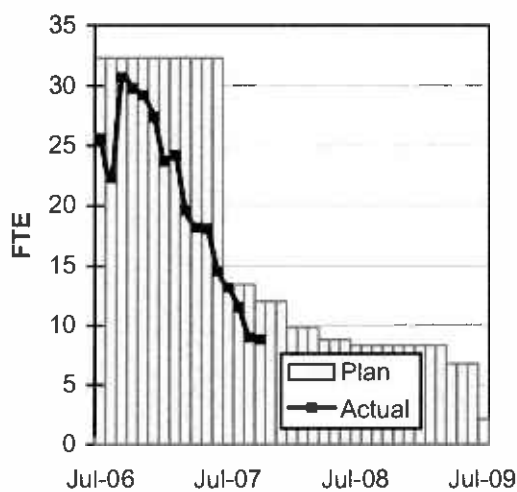


DIRECT AGENCY - COST

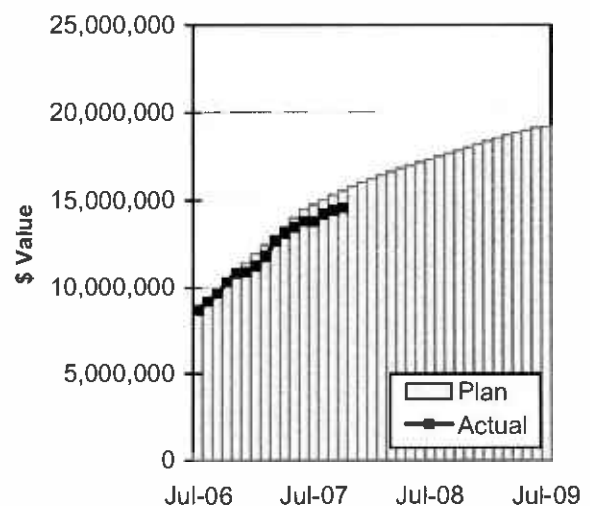


Staff Expenditures are incurred through October 2007

CONSTRUCTION MGMT - FTES



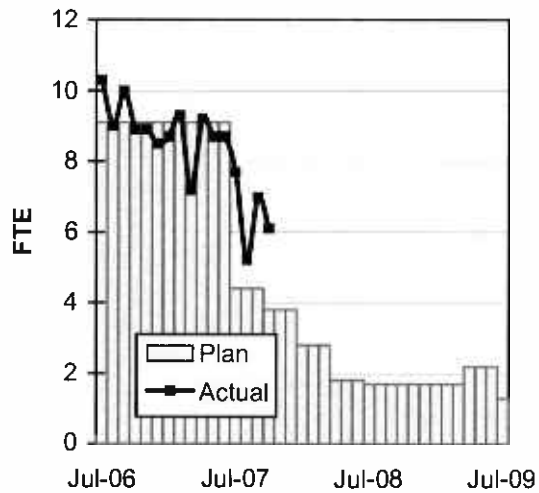
CONSTRUCTION MGMT - COST



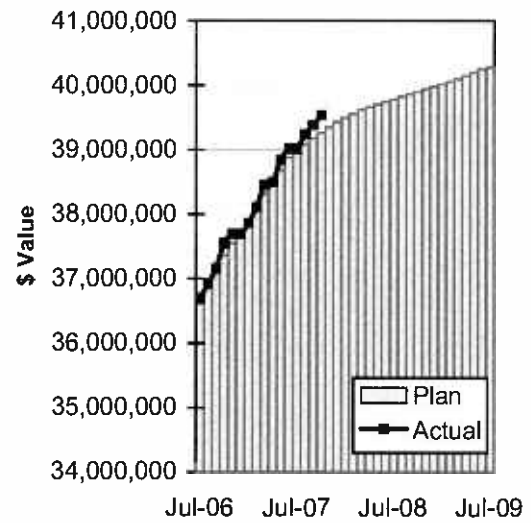
Staff Expenditures are incurred through October 2007

STAFFING STATUS

ELRT PARTNERS - FTES



ELRT PARTNERS - COST



Staff Expenditures are incurred through October 2007

REAL ESTATE STATUS

- For C0803, the tunnel portion of the alignment, 40 parcels were required for acquisition (11 full takes, 4 partial takes, 20 sub-surface easements/temporary construction easements, 3 sub-surface easements/building protection, and 2 building protections).
- For C0803, the at-grade portion of the alignment, 27 parcels were required for acquisition (17 full takes, 9 partial takes and 1 surface easement). Nine parcels were required for the LAUSD Ramona Opportunity High School site reconfiguration.
- For C0802, 2 parcels were required (1 surface easement and 1 full take parcel).
- Two Encroachment Permits were obtained from Caltrans for the C0803-Tunnel. Three street closures were obtained from the City of LA.

REAL ESTATE ACQUISITION SCHEDULE SUMMARY

<i>Number of Parcels</i>	Required	Acquired	On Schedule	Behind Schedule	
				Number	Avg. Calendar Days
This Period	69	69	0	0	0
Last Period	69	69	0	0	0

**REAL ESTATE STATUS TO DATE BY CONTRACT
ACQUISITION PHASE**

CONTRACT NO.	Number of Parcels (A+B+C+D+E)	Agreements Signed (A)	Parcels in Condemnation (B)	Under Negotiation (C)	In Appraisal Process (D)	Inactive Parcels (E)	Parcels Available
C0803-Tunnel	40	40	0	0	0	0	40
C0803-At-Grade	27	27	0	0	0	0	27
C0802	2	2	0	0	0	0	2
TOTAL	69	69	0	0	0	0	69
LAST PERIOD	69	69	0	0	0	0	69

ENVIRONMENTAL STATUS

- Finalized the burial plan for the Evergreen Cemetery site.
- Metro Real Estate is proceeding with the acquisition of 105 burial plots at Evergreen Cemetery.

COMMUNITY RELATIONS STATUS

- Distributed sixteen Construction Notices which reached approximately 64,720 residences/businesses. Activities include: traffic switches and re-striping, curb and gutter construction, trackway guidework, Union Station baggage road construction and canopy installation.
- Held monthly Ad-Hoc Sub Committee Meeting, Executive Review Advisory Committee Meeting and Review Advisory Committee Meeting.
- Supported Inner-City Struggle Dinner, East Los Angeles Chamber Installation Dinner, Eastside Chamber Luncheon, ELA Community Youth Center Dinner and Jovenes Inc. 2007 Youth Festival and Music Competition.
- Met with sixty-five residents/business owners to coordinate construction activities.
- Delivered seven Open During Construction banners.

QUALITY ASSURANCE STATUS

- Quality Management continues to review contractor's monthly Asphalt, Concrete Compressive Strength and Soils Compaction reports - areas of concern, if any, are coordinated to resolution with the onsite lab representative.
- The results of field surveillance activities continue to be identified in Weekly Surveillance Reports.
- Fabrication of OCS Poles is complete and poles are currently being installed. The issues, which were subject of Metro Quality involvement, did not impact installation.
- Station canopy fabrication continues and is the subject of additional Metro attention. Areas of concern are being coordinated to resolution.

SAFETY STATUS

- Participated in weekly progress meetings with Construction Managers and ELRTC management personnel to discuss safety related issues and construction schedule.
- Participated in Rail Activation Meetings.
- Participated in Contractor Readiness Review Meetings.
- Monitored construction activities on a daily basis including weekends to ensure contractor compliance with Contract Specification.
- ELRTC and their subcontractors reported two recordable incidents and 90,871 work hours for the month of October 2007. A total of thirty (32) recordable incidents have occurred Project to Date. Total Project to Date work hours are 2,390,894. Injury Rates for Recordable incidents are 2.6; well below the National Average of 5.6.

ART DEVELOPMENT STATUS

- Coordination meetings with Construction for artwork fabrication/installation schedules for eight stations.

**Metro Gold Line Eastside Extension
Monthly Project Status Report**

October 2007

THIRD PARTY AGREEMENT STATUS

Third Party	Type of Agreement	Forecast Execution Date	Required Need Date	Status/ Comments
City of Los Angeles	Amendment	Completed	N/A	Executed December 2002.
Los Angeles County	Master	Completed	N/A	Executed April 2003.
Caltrans (All Projects)	Master	Completed	N/A	Executed July 2003.
Caltrans (101)	Design	Completed	N/A	Executed July 2003.
Caltrans (101)	Construction	Completed	N/A	Executed September 2003.
Caltrans (101)	Maintenance	12/08	Project Completion	The initial negotiation meeting was held on 1/9/03. LACMTA received a draft from Caltrans on 1/22/04. LACMTA reviewed and submitted the agreement to Caltrans on 2/10/04. A follow up call was made on 10/20/05 but no response to date.
LADWP (Water/Power)	Amendment	11/07	*6/04	LACMTA Management, County Counsel, and LACMTA Board staff have participated in meetings with DWP to complete negotiations, since the "Deadline and Delay" clause is not acceptable to LADWP. Alternative language was forwarded to LACMTA Management and County Counsel for review on 10/7/05. LACMTA CEO is to speak with LADWP CEO.
So. Cal. Edison Co.	Amendment	N/A	N/A	SCE Executive Legal Branch stated on 2/25/05 they have no intention of signing agreement.
The Gas Company	Amendment	Completed	N/A	Executed May 2005.
SBC/AT & T	Amendment	Completed	N/A	Executed May 2005. SBC has been acquired by AT&T and has formed a new corporation TCM for work in Southern California. A new agreement has been negotiated with Metro and TCM, which was approved by the Metro Board in April. The new agreement mirrors the SBC agreement except for some minor changes in the insurance language.
Adelphia Cable Company	Amendment	11/07	*6/04	LACMTA received a draft from Adelphia for review. LACMTA Management and County Counsel reviewed the amendment and returned the document to Adelphia with comments. Adelphia's Legal Department is reviewing the document and follow-up calls were made on 10/20/05 and 11/16/05.
Calif Wtr Service Co	Master	Completed	N/A	Executed May 2005.
L.A. County Sanitation Districts	N/A	N/A	N/A	In a letter dated 3/26/03, the Sanitation District stated that there is not a need for an agreement since there are no relocations related to their facilities. The Sanitation District will review submittals related to encasements of their facilities on Indiana Street.
MCI Worldcom	Amendment	Completed	N/A	Executed May 2005.
Metropolitan Wtr Dist	Amendment	Completed	N/A	Executed May 2003.

THIRD PARTY AGREEMENT STATUS

Third Party	Type of Agreement	Forecast Execution Date	Required Need Date	Status/ Comments
Verizon Wireless	Amendment	11/07	*6/04	The revised draft amendment was hand delivered to Verizon on 11/19/03 and an electronic copy was sent to them 2/19/04. Verizon did respond with comments, which were reflected in a revised agreement sent 4/05. Verizon legal is completing final review. Follow up calls were made on 10/20/05 and 11/16/05. Verizon has now joined MCI and once the legal work is complete in late February 2006, LACMTA may be able to use the MCI Agreement for Verizon work. E-mailed MCI Agreement to Verizon Representative for consideration as overall agreement covering Verizon and MCI as the new Verizon.
GST	N/A			Facilities are not impacted by Eastside Construction
Exxon Mobil Oil Company	N/A			Facilities are not impacted by Eastside Construction
Pacific Pipeline Company	N/A			Facilities are not impacted by Eastside Construction
Kinder Morgan Pipeline Company	N/A			Facilities are not impacted by Eastside Construction
Tosco Refining Company	N/A			Facilities are not impacted by Eastside Construction
Equilon Pipeline Company	N/A			Facilities are not impacted by Eastside Construction
Level 3 Communications	N/A			Facilities are not impacted by Eastside Construction
Broadwing Communications	N/A			Facilities are not impacted by Eastside Construction
Eller Media	N/A			Facilities are not impacted by Eastside Construction

* Work will be performed under the current MCA and will not delay ongoing work.

CPUC CROSSING SUMMARY

Batch	Application Status	Initial Package Submittal to MTA	Field Diagnostic Meeting	Revised Drawings Due to MTA	Draft Write-up to MTA	Draft Package Submittal to PUC Local office and Agencies	Final Package Submittal to PUC	CPUC Final Approval
1	Complete	8/5/02	8/12/02	8/28/02	9/6/02	9/6/02	9/6/2002	Approved
2	Complete	10/4/02	10/11/02	10/25/02	11/6/02	11/22/02	11/22/2002	Approved
3	Complete	2/6/03	2/27/03	3/10/03	1/27/03	4/11/02	4/18/2003	Approved
4	Complete	12/14/02	1/15/03	1/29/03	1/13/02	5/5/03	6/18/2003	Approved
4A	Complete	1/24/03	1/29/03	3/14/03	2/7/03	9/5/03	1/23/2004	Approved
6	Complete	3/19/03	3/26/03	6/20/03	2/7/03	9/5/03	9/12/2003	Approved
7	Complete	12/11/02	12/18/02	3/31/03	2/7/03	5/5/03	7/25/2003	Approved
8	Complete	11/26/02	12/18/02	3/31/03	11/15/02	6/6/03	5/21/2004	Approved
9	Complete	1/20/03	1/29/03	3/31/03	11/22/02	8/29/03	9/12/2003	Approved
10	Complete	12/11/03	12/18/02	3/10/03	11/22/02	5/5/03	8/29/2003	Approved
11	Complete	2/13/03	2/27/03	4/18/03	12/6/02	6/6/03	8/29/2003	Approved
12	Complete	2/13/03	2/27/03	4/18/03	12/13/02	6/6/03	9/5/2003	Approved
13	Complete	2/6/03	2/20/03	4/18/03	2/21/03	6/6/03	9/1/2004	Approved
14	Complete	1/8/03	1/15/03	3/14/03	11/12/02	8/29/03	10/30/2003	Approved
15	Complete	2/26/03	N/A	N/A	2/21/03	6/6/03	8/29/2003	Approved
16	Complete	2/26/03	N/A	N/A	2/26/03	6/6/03	8/29/2003	Approved
17	Complete	1/8/03	1/15/03	N/A	2/14/03	5/5/03	6/13/2003	Approved
18	Complete	1/8/03	1/15/03	3/20/03	2/14/03	5/5/03	6/13/2003	Approved
Agency Responsible		ELRTP	MTA	ELRP	ELRTP	MTA	MTA	

Batch No. 5 has been removed, as the Midway Yard will be utilized.

SHADED AREAS REPRESENTS COMPLETION

All applications are approved.

Batch Descriptions	
1 1st / Alameda	10 3rd / Ford
2 Alameda / Temple	3rd / McDonnell
1st / Hewitt	3rd / Arizona
Ped Crossings @ 1st / Alameda Station	11 3rd / Mednik
3 1st / Vignes	3rd / Civic Center Drive
4 1st / Lorena	3rd / La Verne
4A Indiana/1st	12 3rd / Driveways to Sherriff's Station
Indiana/3rd	3rd / Wood / Via Corona / Pomona / Beverly
Indiana Pedestrian Crossing	13 3rd / 60 Fwy WB Connector
6 1st / Mission	3rd / 60 Fwy over ELRT
1st / Anderson	3rd / 710 Fwy SW Connector
1st / Clarence	3rd / Bridge over 710 Fwy
1st / Utah	3rd / 710 Fwy SE Connector
1st/Gless Pedestrian Crossing	14 Union Station Service Road
7 3rd / Rowan	15 1st / Santa Fe
8 3rd / Gage	1st / Myers
3rd / 60 Fwy WB Ramps	16 1st / MTA
3rd /Downey	1st / BNSF
	1st / Union Pacific

CONTRACT C0802 STATUS

Description: 101 Freeway Bridge Overcrossing Contractor: Brutoco Engineering & Construction		Contract No. C0802 Status as of: November 2, 2007																													
Progress/Work Completed: * Bridge work was completed in March 2007 Areas of Concern: * None		Major Activities (In Progress): * None Major Activities Next Period: * None																													
Schedule Summary: Date of Award: 09/07/04 Notice to Proceed: 09/22/04 Original Contract Duration: 700 CD Current Contract Duration: 775 CD Elapsed Time from NTP: 904 CD * * Note: Elapsed time to Milestone # 1 completion		<table border="1" style="width: 100%; border-collapse: collapse;"> <thead> <tr> <th></th> <th style="text-align: center;">Original Contract Dates</th> <th style="text-align: center;">Time Extension</th> <th style="text-align: center;">Current Contract</th> <th style="text-align: center;">Forecast</th> <th style="text-align: center;">Variance CDs</th> </tr> </thead> <tbody> <tr> <td>Notice to Proceed</td> <td style="text-align: center;">09/22/04</td> <td style="text-align: center;">0</td> <td style="text-align: center;">09/22/04</td> <td style="text-align: center;">09/22/04</td> <td style="text-align: center;">0</td> </tr> <tr> <td>Milestone 1 - Complete Abutment No. 10</td> <td style="text-align: center;">06/26/06</td> <td style="text-align: center;">49</td> <td style="text-align: center;">08/14/06</td> <td style="text-align: center;">03/15/07</td> <td style="text-align: center;">-213</td> </tr> <tr> <td>Milestone 2- Complete All Work Without Plant Establishment</td> <td style="text-align: center;">08/23/06</td> <td style="text-align: center;">75</td> <td style="text-align: center;">11/06/06</td> <td style="text-align: center;">08/06/07</td> <td style="text-align: center;">-273</td> </tr> </tbody> </table>							Original Contract Dates	Time Extension	Current Contract	Forecast	Variance CDs	Notice to Proceed	09/22/04	0	09/22/04	09/22/04	0	Milestone 1 - Complete Abutment No. 10	06/26/06	49	08/14/06	03/15/07	-213	Milestone 2- Complete All Work Without Plant Establishment	08/23/06	75	11/06/06	08/06/07	-273
	Original Contract Dates	Time Extension	Current Contract	Forecast	Variance CDs																										
Notice to Proceed	09/22/04	0	09/22/04	09/22/04	0																										
Milestone 1 - Complete Abutment No. 10	06/26/06	49	08/14/06	03/15/07	-213																										
Milestone 2- Complete All Work Without Plant Establishment	08/23/06	75	11/06/06	08/06/07	-273																										
Physical Percent Complete: Physical completion ** as of this reporting period is: 100.00% ** Note: Physical completion assessment reflects work completed and invoice amount shown in Caltrans Monthly Progress/Expense Report No. 30.		<table style="width: 100%;"> <tr> <td style="width: 70%;">Cost Summary:</td> <td style="width: 30%; text-align: right;">\$ In millions</td> </tr> <tr> <td>1. Award Value:</td> <td style="text-align: right;">6.42</td> </tr> <tr> <td>2. Executed Modifications:</td> <td style="text-align: right;">0.00</td> </tr> <tr> <td>3. Approved Change Orders:</td> <td style="text-align: right;">0.00</td> </tr> <tr> <td>4. Current Contract Value (1+2+3):</td> <td style="text-align: right;">6.42</td> </tr> <tr> <td>5. Incurred Cost:</td> <td style="text-align: right;">6.42</td> </tr> </table>						Cost Summary:	\$ In millions	1. Award Value:	6.42	2. Executed Modifications:	0.00	3. Approved Change Orders:	0.00	4. Current Contract Value (1+2+3):	6.42	5. Incurred Cost:	6.42												
Cost Summary:	\$ In millions																														
1. Award Value:	6.42																														
2. Executed Modifications:	0.00																														
3. Approved Change Orders:	0.00																														
4. Current Contract Value (1+2+3):	6.42																														
5. Incurred Cost:	6.42																														

CONTRACT C0803 STATUS

Description: Tunnel, Stations, Trackwork & Systems Contractor: Eastside LRT Constructors		Contract No. C0803 Status as of: November 2, 2007					
Progress/Work Completed: <ul style="list-style-type: none">* Completed Mariachi Plaza Station mezzanine level exterior walls (except at the east bulkhead)* Completed entrance excavation and support system at Mariachi Plaza Station* Completed Soto Station shoring system for mezzanine slab* Completed Soto Station entrance exterior walls at mezzanine level* Completed West Portal concrete barriers at street level* Completed East Portal invert slab by the hammerhead* Started guideway work on the west end of the 1st Street bridge* Completed guideway and track at 3rd St./Rowan Av. intersection* Installed OCS poles along Segments 5, 6 and 7* Installed embedded rail track at East Los Angeles Civic Center Stn.* Completed Str.widening (north)-Seg.4A between Lorena & Indiana* Started installation of steel canopy at Atlantic Station* Poured Indiana Station platform invert and walls* Poured C0802 bridge closure walls for temp. baggage handling rd.* Erected CMU walls at the TPS-06 site* Delivered steel canopies for East Los Angeles Civic Center and Maravilla stations Areas of Concern: <p>The forecast date for milestone # 1 reflects 50 calendar days beyond the current contractual completion date. Metro requested a recovery schedule from the contractor. The current forecast does not impact ROD.</p>		Major Activities (In Progress): <ul style="list-style-type: none">* Mariachi Plaza Station entrance invert slab* Mariachi Plaza Station roof shoring system* Soto Station mezzanine slab at the west end* West Portal concrete walkways at track level* East Portal exterior walls by the hammerhead* Electrical raceway installation in both tunnels* Construct Indiana, Maravilla and Pico/Aliso stations* Install embedded rail track at Maravilla Station* Welding rail for Segment 3 - tunnels* Guideway/trackwork at 1st Street/Vignes St. intersection* Segments 2A, 5, 6 guideway/track construction* Street widening (south) - Seg. 4A between Lorena & Indiana* Street improvements at 3rd Street/Ditman and 3rd Street/Indiana* Install TPS-04 power feed conduit and vaults* Train Control underground installation - Segments 2A, 5, 6 and 7 Major Activities Next Period: <ul style="list-style-type: none">* Mariachi Plaza Station emergency exit # 1 piles and excavation* Mariachi Plaza Station entrance mezzanine walls* Soto Station construction of mezzanine exterior walls* East Portal exterior wall by the bulkhead* Indiana station platform deck and walkways* East Los Angeles Civic Center station canopy erection* Pico/Aliso Station construction of the TC&C room* Complete MSE wall south of the C0802 Bridge* Segments 1, 2B, 3 (tunnels) & 4A guideway/track construction* Guideway and track installation along the 1st Street Bridge* OCS and Train Control equipment installation* TPS-05 installation of underground electrical and CMU wall					
Schedule Summary: Date of Award: 06/01/04 Notice to Proceed: 07/01/04 Original Contract Duration: 1795 CD Current Contract Duration: 1800 CD Elapsed Time from NTP: 1220 CD Option D Contract duration 90 CD Complete			Original Contract Dates	Time Extension	Current Contract	Forecast	Variance CDs
		Notice to Proceed	07/01/04	0	07/01/04	07/01/04	0
		Milestone 1 - Contract Completion. Complete all systems integration testing and ready for MTA's pre-revenue operation testing.	12/31/08	7	01/07/09	02/26/09	-50
		Milestone 3 - Complete Universal Fare System Equipment area.	04/30/08	5	05/05/08	05/12/08	-7
		Milestone 5 - Vacate all staging areas and turn over to MTA.	05/30/09	5	06/04/09	06/04/09	0
		Milestone 6 - Complete design and construction of Option D work.	09/28/04	0	09/28/04	09/28/04	0
Physical Percent Complete: Physical completion * as of this reporting period is: 70.39% * Note: Physical completion assessment reflects work completed and work in progress.		Cost Summary: \$ In millions 1. Award Value: 600.45 2. Executed Modifications: 9.00 3. Approved Change Orders: 0.14 4. Current Contract Value (1+2+3): 609.58 5. Incurred Cost: 442.32					

CONTRACT E700051F STATUS

Description: 1st Street Bridge Strengthening Contractor: The Griffith Company	Contract No. E700051F Status as of: November 2, 2007																							
Progress/Work Completed: <ul style="list-style-type: none"> * Poured waffle slab - arch above LA River * Installed OCS pole foundations throughout * Turned-over bridge to Metro on 10/26/07 Areas of Concern: <ul style="list-style-type: none"> * None 	Major Activities (In Progress): <ul style="list-style-type: none"> * Remove falsework * Complete contract modifications * Clean up * Contractor demobilization Major Activities Next Period: <ul style="list-style-type: none"> * None 																							
Schedule Summary: Date of Award: 01/19/07 Notice to Proceed: 02/06/07 Original Contract Duration: 224 CD Current Contract Duration: 260 CD Elapsed Time from NTP: 269 CD	<table border="1" style="width: 100%; border-collapse: collapse;"> <thead> <tr> <th></th> <th>Original Contract Dates</th> <th>Time Extension</th> <th>Current Contract</th> <th>Forecast</th> <th>Variance COs</th> </tr> </thead> <tbody> <tr> <td>Notice to Proceed</td> <td>02/09/07</td> <td style="text-align: center;">0</td> <td>02/06/07</td> <td>02/06/07</td> <td style="text-align: center;">0</td> </tr> <tr> <td>Milestone 1 - Substantial Completion</td> <td>10/15/07</td> <td style="text-align: center;">30</td> <td>11/14/07</td> <td>11/14/07</td> <td style="text-align: center;">0</td> </tr> </tbody> </table>							Original Contract Dates	Time Extension	Current Contract	Forecast	Variance COs	Notice to Proceed	02/09/07	0	02/06/07	02/06/07	0	Milestone 1 - Substantial Completion	10/15/07	30	11/14/07	11/14/07	0
	Original Contract Dates	Time Extension	Current Contract	Forecast	Variance COs																			
Notice to Proceed	02/09/07	0	02/06/07	02/06/07	0																			
Milestone 1 - Substantial Completion	10/15/07	30	11/14/07	11/14/07	0																			
Physical Percent Complete: Physical completion as of 10/31/07: 98.00% * * As reported by the City of Los Angeles, Department of Contract Administration	Cost Summary: \$ In millions <table style="width: 100%;"> <tr> <td style="width: 80%;">1. Award Value: *</td> <td style="text-align: right;">4.26</td> </tr> <tr> <td>2. Executed Modifications:</td> <td style="text-align: right;">0.00</td> </tr> <tr> <td>3. Approved Change Orders:</td> <td style="text-align: right;">0.05</td> </tr> <tr> <td>4. Current Contract Value (1+2+3):</td> <td style="text-align: right;">4.31</td> </tr> <tr> <td>5. Incurred Cost:</td> <td style="text-align: right;">4.22</td> </tr> </table> * City of Los Angeles						1. Award Value: *	4.26	2. Executed Modifications:	0.00	3. Approved Change Orders:	0.05	4. Current Contract Value (1+2+3):	4.31	5. Incurred Cost:	4.22								
1. Award Value: *	4.26																							
2. Executed Modifications:	0.00																							
3. Approved Change Orders:	0.05																							
4. Current Contract Value (1+2+3):	4.31																							
5. Incurred Cost:	4.22																							

CONTRACT P2550 STATUS

Description: 2550 Rail Vehicle Program Contractor: AnsaldoBreda, Italy (AB)	Contract No. P2550 Status as of: October 30, 2007					
Progress/Work Completed: 1. Project Management has been assigned to a new Project Team consisting of a new Project Director, a new Project Manager, a new Contract Manager and a new on-site Vehicle Commissioning Manager for vehicle testing and acceptance activities. 2. Pilot Vehicles 701 & 702 are used as initial system training vehicles for maintenance staff. Next action is to transport vehicles to Pittsburg for upgrade. Schedule TBD. 3. Vehicle final assembly work continues in Pittsburg, CA. 4. Shipment of foreign and domestic parts for final assembly continue to arrive in Pittsburg, CA. 5. Vehicle shipment from Italy to Pittsburg and from Pittsburg to Los Angeles is on hold until quality issues are resolved. 6. The Project Team tasked AB to designate Vehicles #706 & #708 as the first two vehicles to be completed and fully tested for revenue service. Several meetings with AB have been held to evaluate progress and to close open items. 7. Communication system test completed and demonstrated to CPUC. Areas of Concern: Several time critical open items have been identified by the new Project Team prior to acceptance of Vehicles # 706 & #708. These include, but not limited to, Vehicle Electro Magnetic Interference (EMI), vehicle coupling issues, ATP/TWC Systems and safety certification process.	Major Activities (In Progress): 1. AnsaldoBreda's manufacturing plants in Pistopia and Naples, Italy continue to prepare carshells and subassemblies for shipment to U.S.A.. 2. Shipment by U.S. flag vessels to U.S. in review with MARAD. Potential argreement between AB and U.S. flag shipper in the works. 3. Testing of Vehicles #706 & #708 is ongoing in Los Angeles. Vehicles are also being worked upon to close quality open items. Major Activities Next Period: 1. Several Technical Progress meetings will be held to emphasize the urgency of resolution of critical Items identified under Areas of Concern. 2. Several tests are scheduled to commence. These include EMI Testing, Floor Fire Endurance Test, ATP/TWC Signal System Test among others.					
Schedule Summary: Date of Award: 04/24/03 Notice to Proceed: 06/06/03 Original Contract Duration: 1470 CD Elapsed Time from NTP: 1607 CD Note: Metro and AnsaldoBreda agreed to Mod No. 4 which extended the Option One ordering period from April 2006 to April 2008, effective May 14, 2007. Metro has requested an updated schedule from AB to determine the estimated completion schedule. However, AB and Metro are currently expediting the acceptance testing of 2 LRVs which, per AB, is expected to be completed by the end of December 2007.		Original Contract Dates	Quantity	Contract Total Quantity	Balance Due	Transferred from FA to Metro
	Notice to Proceed	6/6/2003A				
	Vehicles Assembled		22	50	28	9
	LRV Delivery to Commissioning Site - Metro *		0	50	50	
	LRV Accepted for Revenue Service by Metro		0	50	50	
	LRV in Revenue Service		0	50	50	
	* Delivery is defined as arrival in final configuration to immediately commence inspection and pre-acceptance testing.					
Physical Percent Complete: Percent of LRVs assembled = 22/50 = 44% Percent Work Product Invoiced through Oct. 2007 is 44%	Cost Summary: \$ In millions 1. Award Value: Pasadena (Proj. No.: 800151) 126.99 Eastside Ext. (Proj. No.: 800088) 31.75 Total Award Value 158.74 2 Executed Modifications 0.00 3 Approved Change Orders: 0.00 4 Current Contract Value (1 + 2 + 3): 158.74 5 Payments or invoices in process: 67.50					

CONSTRUCTION PHOTOGRAPHS



City of Los Angeles 1st Street Bridge Girder Strengthening.



Construction of the Boyle Heights/Mariachi Plaza Station entrance.

CONSTRUCTION PHOTOGRAPHS



CMU wall construction for Traction Power Sub Station 6.



Construction of stamped colored pedestrian walkways at 3rd and Indiana Streets

CONSTRUCTION PHOTOGRAPHS



OCS pole installation within Civil Line Segment 6.



Canopy installation at the Pomona/Atlantic Station.

APPENDIX

COST AND BUDGET TERMINOLOGY

ESTIMATED PROJECT COSTS: Estimated project costs are based upon the current project cost estimates that are produced during the engineering design phase.

COMMITMENTS: The total of actual contract awards, executed change orders or amendments, approved work orders of Master Cooperative Agreements, offers accepted for purchase of real estate, and other LACMTA actions that will result in specific expenditures at a future time.

INCURRED COST: The total value of work performed to date of services received, and acquired materials or properties.

EXPENDITURES: The total dollar amount of checks written by the LACMTA's Accounting department for contractor or consultant invoices, third party invoices, staff salaries, and closing payments for escrow accounts that is reported in the LACMTA's Financial Information System (FIS).

CONSTRUCTION: Includes guideways, yards and shops, systems equipment, stations, and vehicles.

PROFESSIONAL SERVICES: Includes general engineering, construction management services, consultant design support services during construction, legal counsel, and agency (LACMTA staff) costs.

RIGHT-OF-WAY: Includes real estate appraisals, purchase cost of parcels, easements, right-of-entry permits, escrow fees, and tenant relocation.

UTILITY/AGENCY FORCE ACCOUNT: Includes work by outside agencies and utilities in design coordination and review.

CONTINGENCY: A fund established at the beginning of a project to provide for anticipated but unknown additional costs that may arise during the course of the project.

SPECIAL CONDITIONS: Includes utilities relocation, environmental compliance and mitigation, master cooperative agreements, insurance program, artwork, systems integration testing and pre-revenue operations.

APPENDIX

LIST OF ACRONYMS

AFE	Authorization For Expenditure
ATC	Automatic Train Control
CADD	Computer Aided Drafting and Design
CALTRANS	California Department of Transportation
CD	Calendar Day
CM	Construction Manager
CMAQ	Congestion Mitigation Air Quality
CN	Change Notice
CO	Change Order
CNFGA	Concurrent Non-FFGA Project Activities
CPM	Critical Path Method
CPUC	California Public Utilities Commission
CR	Camera Ready
CTC	California Transportation Commission
CUD	Contract Unit Description
DB	Design/Build
DBB	Design/Bid/Build
DD	Design Development
DOT	Department of Transportation
DWP	Department of Water and Power
EIR	Environmental Impact Report
EIS	Environmental Impact Statement
EPBM	Earth Pressure Balance Machine
ESP	Eastside LRT Partners
FAR	Federal Acquisition Regulation
FD	Final Design
FEIS	Final Environmental Impact Statement
FEIR	Final Environmental Impact Report
FFGA	Full Funding Grant Agreement
FIS	Financial Information System
FSEIR	Final Supplemental Environmental Impact Report
FSEIS	Final Supplemental Environmental Impact Statement
FTA	Federal Transit Administration
FTE	Full Time Equivalent
GDSR	Geotechnical Design Summary Report
IFB	Invitation for Bid
IPO	Integrated Project Office
JV	Joint Venture
LA	Los Angeles
LABOE	Los Angeles Bureau of Engineering
LACFCD	Los Angeles County Flood Control District
LACMTA	Los Angeles County Metropolitan Transportation Authority
LADOT	Los Angeles Department of Transportation

APPENDIX
LIST OF ACRONYMS (Continued)

LADPW	Los Angeles Department of Public Works
LADWP	Los Angeles Department of Water and Power
LAUSD	Los Angeles Unified School District
LNTP	Limited Notice To Proceed
LONP	Letter Of No Prejudice
LRT	Light Rail Transit
L RTP	Long Range Transportation Plan
LRV	Light Rail Vehicle
MIS	Major Investment Study
MPSR	Monthly Project Status Report
N/A	Not Applicable
NEPA	National Environmental Protection Act
NPDES	National Pollution Discharge Elimination System
NTE	Not to Exceed
NTP	Notice To Proceed
OCIP	Owner-Controlled Insurance Program
P3	Primavera Project Planner® (scheduling software)
PC	Project Control
PE	Preliminary Engineering
PEER	Permit Engineering Evaluation Report
PGL	Pasadena Gold Line
PIP	Project Implementation Plan
PM	Project Manager
PMA	Project Management Assistance
PMIP	Project Management Implementation Plan
PMOC	Project Management Oversight Consultant
PMP	Project Management Plan (manual)
P&P	Policies & Procedures
PR	Project Report
PSR	Project Study Report
QA	Quality Assurance
QAR	Quality Assurance Report
QC	Quality Control
QPSR	Quarterly Project Status Report
RAC	Review Advisory Committee
RAG	Rail Activation Group
RFC	Request For Change
RFP	Request For Proposal
ROD	Record Of Decision
ROD	Revenue Operations Date
ROM	Rough Order of Magnitude

**APPENDIX
LIST OF ACRONYMS (Continued)**

ROW	Right-Of-Way
SCAQMD	Southern California Air Quality Management District
SCE	Southern California Edison
SCRRA	Southern California Regional Rail Authority
SHA	State Highway Account
SHPO	State Historic Preservation Office
SIT	System Integration Testing
SOV	Schedule Of Value
SOW	Statement Of Work
SP	Special Provision
STIP	State Transportation Improvement Program
STP	Surface Transportation Program
TBD	To Be Determined
TBM	Tunnel Boring Machine
TCRP	Traffic Congestion Relief Program
TPSS	Traction Power Substation
TRACS	Transit Automatic Control System
UFS	Universal Fare System
USDOT	U.S. Department Of Transportation
VE	Value Engineering
WBS	Work Breakdown Structure
WP	Work Package