

Metro Gold Line Eastside Extension



METRO GOLD LINE EASTSIDE EXTENSION

MONTHLY PROJECT STATUS REPORT

THE PREPARATION OF THIS DOCUMENT HAS BEEN FINANCED IN PART THROUGH A GRANT FROM THE U. S. DEPARTMENT OF TRANSPORTATION, FEDERAL TRANSIT ADMINISTRATION (FTA), UNDER THE FEDERAL TRANSIT ACT OF 1964, AS AMENDED, AND FUNDS FROM THE STATE OF CALIFORNIA.

AUGUST 2008

TABLE OF CONTENTS

	Page No.
Project Overview & Status.....	1-4
Management Issues.....	4
Project Status	
• Project Scope.....	5
• Schedule	
○ Key Milestones Six-Month Lookahead	6
○ Project Master Schedule Critical Path.....	7-11
○ Critical Path Narrative.....	12
• Project Cost Status.....	13-14
• Financial/Grant Status.....	15-16
• Staffing.....	17-19
• Real Estate.....	20
• Environmental.....	21
• Community Relations.....	21
• Quality Assurance.....	22
• Safety.....	22
• Art Development.....	22
• Third Party.....	23-24
• CPUC Crossing.....	25
Contract C0802 Status	26
Contract C0803 Status	27
Contract E700051F Status.....	28
Contract P2550 Status	29
Construction Photographs	30-33
Appendices.....	34-37

PROJECT OVERVIEW & STATUS

The Metro Gold Line Eastside Extension Project is a six-mile, dual track light rail system with eight new stations and one station modification. The system originates at Union Station in downtown Los Angeles, where it connects with the Pasadena Gold Line, traveling generally east to Pomona and Atlantic Boulevards. The system will bridge State Route 101 Freeway and traverse the existing 1st Street Bridge over the Los Angeles River. The system will travel south on Alameda Street and then east on 1st Street with two stations at Alameda and Utah Streets. East of the Los Angeles River and 1st and Utah Streets, the alignment transitions to tunnel for approximately 1.7 miles, and continues beneath 1st Street to underground stations at 1st Street and Boyle Avenue and 1st Street and Soto Street. The alignment returns to the surface near the intersection of 1st Street and Lorena Streets, then jogs to the south, transitioning to follow 3rd Street with stations at Indiana Street, Ford Boulevard, Mednik Avenue and Pomona and Atlantic Boulevards.

Notice to Proceed to ARINC for the expansion of the existing SCADA system was provided to the contractor this period. ARINC is expected to design and develop the software in order to install it in time to support the project schedule for Phase II Systems Integration Testing. Phase II is Metro's responsibility. ARINC will submit a baseline schedule next period. The C0803 contractor is finalizing a complete SCADA point's database, which will be provided to ARINC next month.

Underground construction is proceeding per plan. The C0803 contractor completed rail welding in the tunnels this period and began final rail fastening and elevation check. Field crews continued securing "J" hooks to the tunnel walls and installing conduit for the 34.5 KV power cable. Concrete encasement of the FRE conduit is nearing completion. All that remains is the encasement of the pull boxes outside the cross-passages. Installation of the Overhead Catenary System (OCS) hangers and supports on both tunnels continued this period, as well as fabrication of OCS tunnel assemblies.

At the Boyle Heights/Mariachi Plaza Station, field crews poured the second half of the entrance roof slab, stair # 3 and the vent shaft # 3 mud mat. Erection of light pendants throughout the station was completed as well as installation of the metal frame for dry wall construction at the mezzanine level. At the platform level, sprinkler heads were attached to the fire protection water pipe and the ceiling grid installation began in this area. Fire protection pipe, HVAC duct and cable tray installation at the station entrance mezzanine rooms continued, and lighting installation began at the mezzanine level auxiliary power and mechanical rooms. Backfill around the Mariachi Plaza Kiosk proceeded per plan. Also, station elevators were delivered to the site this period.

At the Soto Station, construction crews poured the mechanical room roof slab, stair # 1 sloping slab and the stair # 8 mud mat. Placement of the invert slab rebar, embeds and forms for stair # 8 began as well as erection of CMU walls in the station mechanical and auxiliary power rooms. Placement of platform ceiling supports and installation of exposed conduit at mezzanine level also began. Installation of fire protection pipe and HVAC ducts at the mezzanine level rooms continued per plan. The street reconstruction on 1st Street completed this period. Also, station elevators were delivered to the site. Equipment was delivered and set on its foundation at the Traction Power Substation 2 (TPS-02) site.

PROJECT OVERVIEW & STATUS

At the East Portal (EP), field crews poured the portal to tunnel transition walkway on both tunnels and completed erection of CMU walls at the auxiliary power room. Completed this period were OCS support beams, hangers and cantilevers, and backfilling above the East Portal structure. Street restoration along 1st Street west of Lorena Street began per plan and installation of fire protection pipe, HVAC ducts and electrical cable tray continued at the TC&C, mechanical and auxiliary power rooms.

At-grade construction is proceeding according to plan. At Union Station, field crews began installing Train Control (TC) underground conduit and pull boxes and laying track on the ballasted track bed. The TC&C bungalow was delivered and placed on its foundation.

Along Alameda Street (Segment 1), construction crews completed installing the duct bank, the TC underground conduit and pull boxes, and the first layer of ballast for the track bed. Installation of the curved rail track at Alameda Street and 1st Street continued per plan. Track invert was poured on the west side of the intersection.

Along 1st Street between Vignes Street and the West Portal (Segment 2B), construction of the guideway/track continued per schedule. Field crews poured the eastbound track invert slab west of the West Portal (WP) and the track crossover invert slab on 1st Street between Clarence and Utah streets. Also, rail installation on the westbound track west of the WP and on the crossover began this period. The systems subcontractor installed OCS "C" arms and cantilevers, and began stringing messenger and contact wire.

At the TPS-01 site under the 1st Street Bridge, construction crews completed clearing the route to bring permanent power into the substation. Also, the substation equipment was delivered to the site and set on its foundation. LADWP construction crews began trench excavation and conduit installation for the power cable feed.

Guideway construction along 1st Street between Lorena and Indiana Streets in Segment 4A is nearing completion. Field crews continued stringing OCS messenger wire and installing regulating wire. Installation of TC impedance bonds began this period. At the TPS-03 site at the intersection of 1st and Lorena Streets, erection of the CMU wall was completed. Also, construction of the guideway south of the Indiana Station (Segment 4B) was completed and sidewalk construction began on the east side of Indiana Street.

Construction along 3rd Street in Segment 5, between Ditman and Eastern Avenues, is also nearing completion. Field crews poured the topping slab for the Ditman track crossover and completed installation of the TC transfer switch machines. Also, signal wire pulling between Ditman Ave. and the EP, and between Maravilla and Indiana Stations began this period. Final paving (grind/overlay) along 3rd Street started at selected intersections and installation of the mountable curb along both sides of the median continued per plan. At the TPS-04 site, construction crews completed terminating the TP cable and installation of the substation gate.

PROJECT OVERVIEW & STATUS

Between Mednik and Eastern Avenues (Segment 6), construction continued per plan. Construction crews completed pulling signal wire between the Maravilla and East Los Angeles Civic Center Stations and continued with the final street paving. Placement of mountable curb on both sides of the median continued per schedule. At the TPS-05 site, field crews completed terminating TP cable and installed the substation gate.

At the east end of the alignment along 3rd Street between Atlantic Boulevard and Mednik Street (Segment 7), guideway and street construction is also nearing completion. Field crews completed installation of train signals at several intersections and pulled fiber optic cables between Atlantic and ELACC Stations. The final street paving and construction of mountable curb at the guideway's edge continued per schedule, as well as final punch list work.

At the TPS-06 site on the northwest corner of Atlantic and Pomona Boulevards, the systems subcontractor pulled express cable from Atlantic Station and terminated it at the substation control room.

In other areas of the alignment, at-grade station construction continues according to plan. Construction crews continued installation of DC breakers and cable, auxiliary transformers, junction boxes and cabinets inside the TC&C rooms at the Maravilla and Indiana Stations. Erection of canopy steel frames at the Little Tokyo/Arts District and Indiana Stations continued. TC&C room lighting was completed at Indiana, Maravilla and ELACC Stations. Also, field crews poured the platform edge tactile warning strip topping slab at Maravilla and ELACC Stations. At Atlantic station, installation of UPS racks was completed and placement of exposed conduit for fire alarms and telephones began this period.

The fabrication and delivery of 50 light rail vehicles, Contract No. P2550 continues per the revised plan. Ten vehicles are required for the Metro Gold Line Eastside Extension Project. Fabrication of car assemblies is done at the contractor's plant in Italy and final assembly and testing is done at the contractor's facility in California. To date, a total of thirty-nine vehicles have been assembled and of those, seven vehicles are going through the pre-acceptance process before entering the final inspection and commissioning phase. Vehicles will be delivered per the May 2008 revised schedule. Two more vehicles are scheduled for delivery to Metro next period to begin conditional acceptance testing. To date, Metro has conditionally accepted six vehicles, which are running on the operating Metro Gold Line.

The Universal Fare System equipment is in storage at the vendor's facility until the equipment is required for installation. Metro staff has determined that in order to minimize the risk of equipment damage and vandalism, equipment installation will be deferred to the period of Pre-Revenue Operations. The vendor has requested a six to eight week notice prior to equipment delivery.

PROJECT OVERVIEW & STATUS

The Metro Art Department continued providing technical support and coordination between the C0803 contractor and the artists responsible to provide art pieces for the eight stations. The artists continue developing shop drawings and material sampling with multiple fabricators and providing mounting details to the C0803 contractor. Several art pieces have been fabricated and are getting packaged for shipment to the site. This period, a bronze sculpture for the Boyle Heights/Mariachi Plaza Station was delivered to the site and placed in storage. Metro and ELRTC are continuing with coordination meetings, where fabrication and installation issues are discussed.

MANAGEMENT ISSUES

No Management Issues for the period ending August 2008.

PROJECT SCOPE

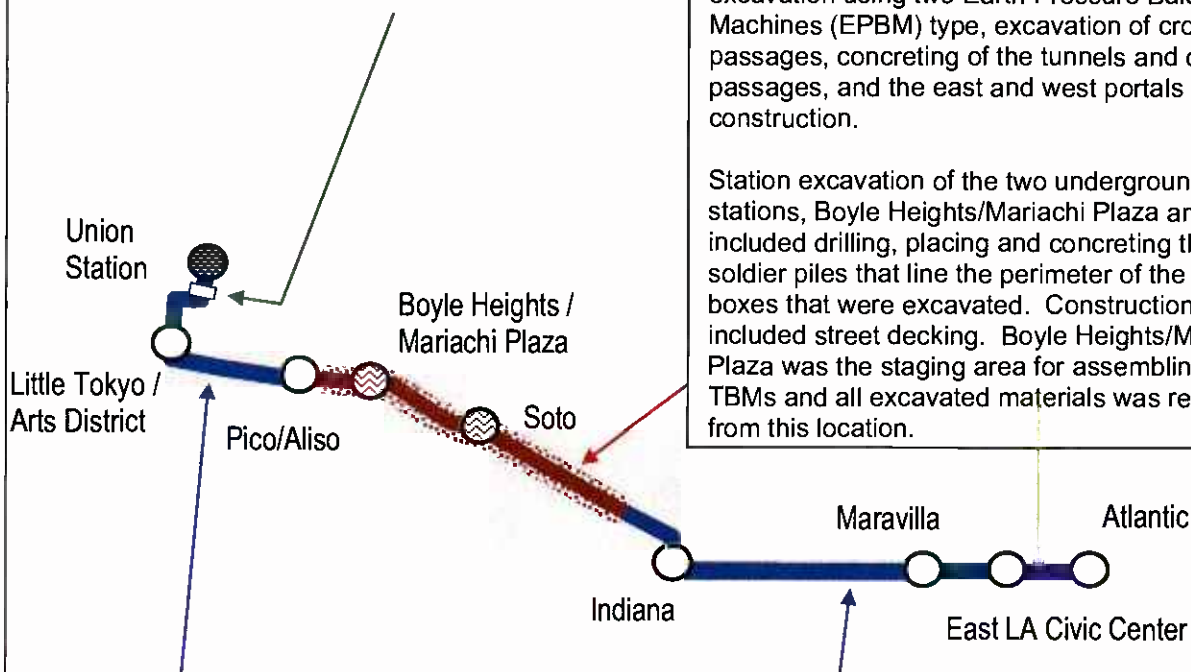
Contract C0802 – 101 Freeway Bridge

Overcrossing: The construction of the bridge was combined with Caltrans freeway improvements project. Caltrans administered the construction and the LACMTA provided oversight and was responsible for the construction costs of the bridge overcrossing.

Contract C0803 - Tunnel and Station

Excavation (Design/Bid/Build): Construction of the 1.7 mile tunnel segment included tunnel excavation using two Earth Pressure Balance Machines (EPBM) type, excavation of cross passages, concreting of the tunnels and cross passages, and the east and west portals construction.

Station excavation of the two underground stations, Boyle Heights/Mariachi Plaza and Soto, included drilling, placing and concreting the soldier piles that line the perimeter of the station boxes that were excavated. Construction also included street decking. Boyle Heights/Mariachi Plaza was the staging area for assembling the TBMs and all excavated materials was removed from this location.



Contract C0803 - Stations, Trackwork, and Systems (Design/Build): Construction of the two underground stations includes structural walls, station platforms, mezzanines, station entrances, and plazas, architectural finishes and all related mechanical and electrical work.

Construction of the six-mile alignment includes six at-grade stations, trackwork installation and testing for the entire alignment.

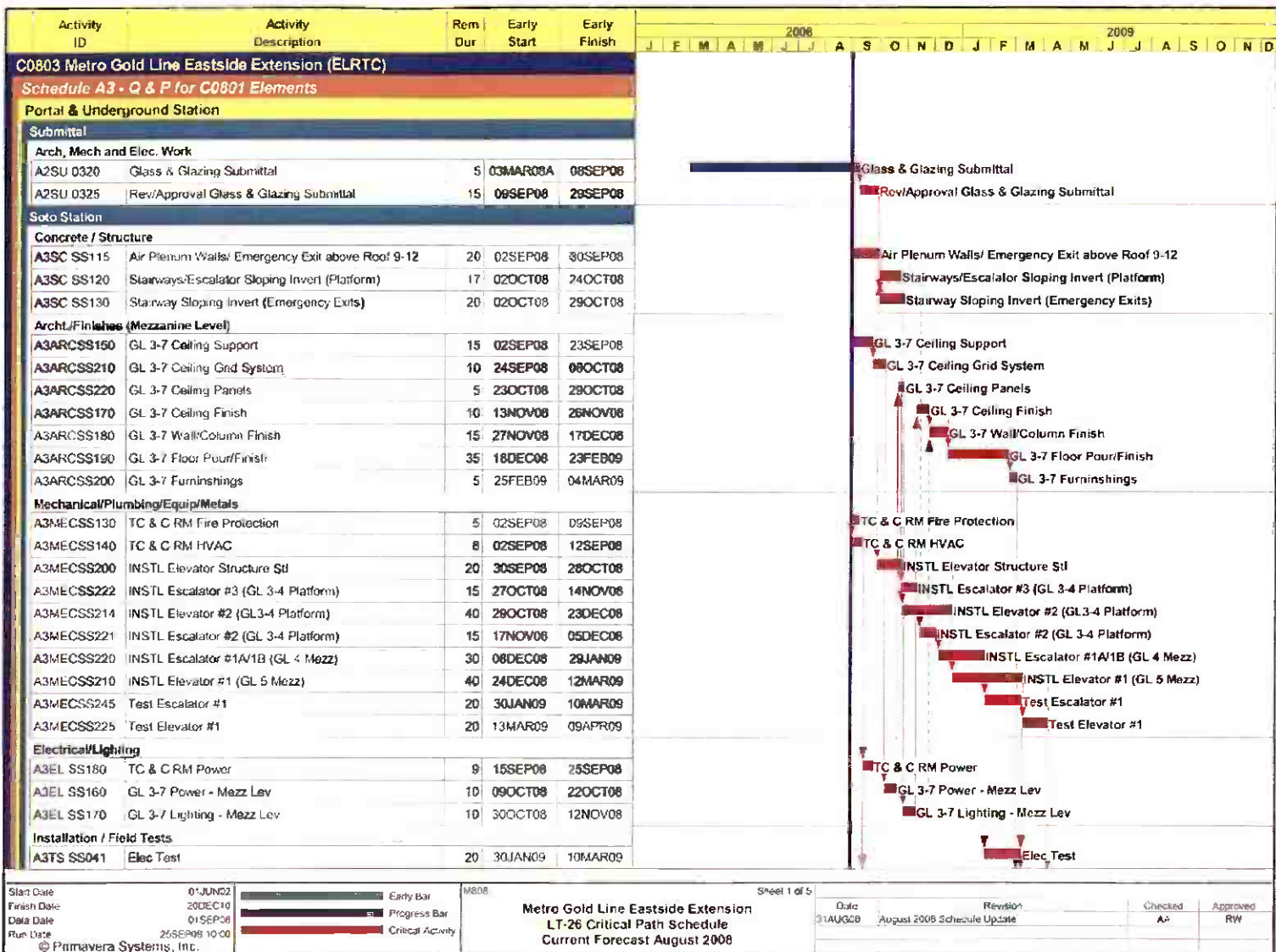
Systems installation and testing is inclusive of power systems, automatic train control, fire and emergency management, TRACS and communications systems. The contractor will be responsible for systems integration testing for the entire line segment prior to pre-revenue operations.

KEY MILESTONE SCHEDULE SIX-MONTH LOOKAHEAD

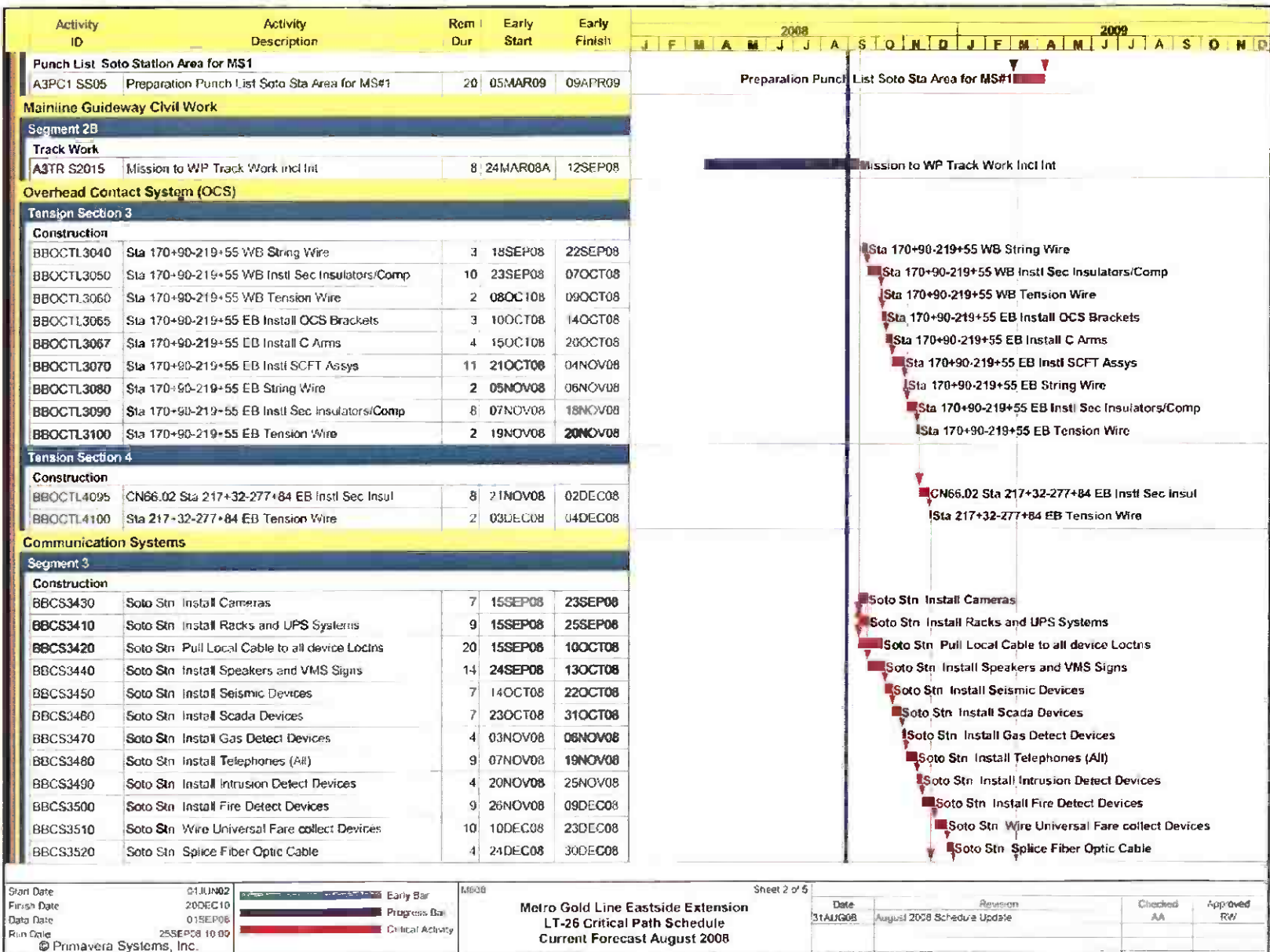
	Milestone Date	Aug-08	Sep-08	Oct-08	Nov-08	Dec-08	Jan-09
Completed MSE Wall From Commercial Street to Alameda Street - Segment 1	08/08/08	○					
Issued NTP for SCADA System Upgrade Contract to ARINC	08/14/08 *	◆					
Completed Civil Guideway Construction - Segment 7 East End of the Alignment	08/15/08 *	○					
Started Installation of Cable Transmission System - Segment 7 East End of the Alignment	08/29/08 *	○					
Started Installation of the Radio System in the Tunnels	08/29/08 *	○					
Complete Entrance Structure at Boyle Heights / Mariachi Plaza Station	09/04/08 *		○				
Begin Delivery of Fans and Dampers for Underground Stations	09/10/08 *		○				
Complete Civil Guideway Construction - Segments 2A and 2B	09/12/08 *		○				
Complete Civil Guideway & Track Construction in the Tunnels - Segment 3	09/18/08 *		○				
Complete Track Construction throughout the Alignment	09/22/08		○				
Complete Entrance Structure at Soto Station	09/30/08 *		○				
Start Installation of Elevators and Escalators at Underground Stations	10/13/08 *			○			
Begin Local Field System Testing - LFAT	10/14/08 *			○			
Install Tunnel Portal Surveillance System	11/10/08				○		
Complete Street Improvements Throughout the Alignment	11/26/08 *				○		
Complete At-Grade Stations Canopy Installation	12/03/08 *					○	
Complete Installation of Traction Power Substations	12/04/08 *					○	
Complete Train Control Installation Throughout the Alignment	12/04/08 *					○	
Complete CCS Installation Throughout the Alignment	12/05/08					○	
Complete Installation of Cable Transmission System	01/07/09 *						○
Start Systems Integration Testing Phase I (ELRTC)	01/09/09						○
<div> <div>◆ LACMTA Staff Milestone</div> <div>○ Eastside LRT Constructors</div> <div>FTA</div> <div>FTA Approval</div> <div>△ Other Agencies</div> <div>* New Date</div> <div> Metro</div> <div>LACMTA Board Approval</div> </div>							

Six month lookahead schedule for Contract C0803 reflects the contractor's current CPM schedule.

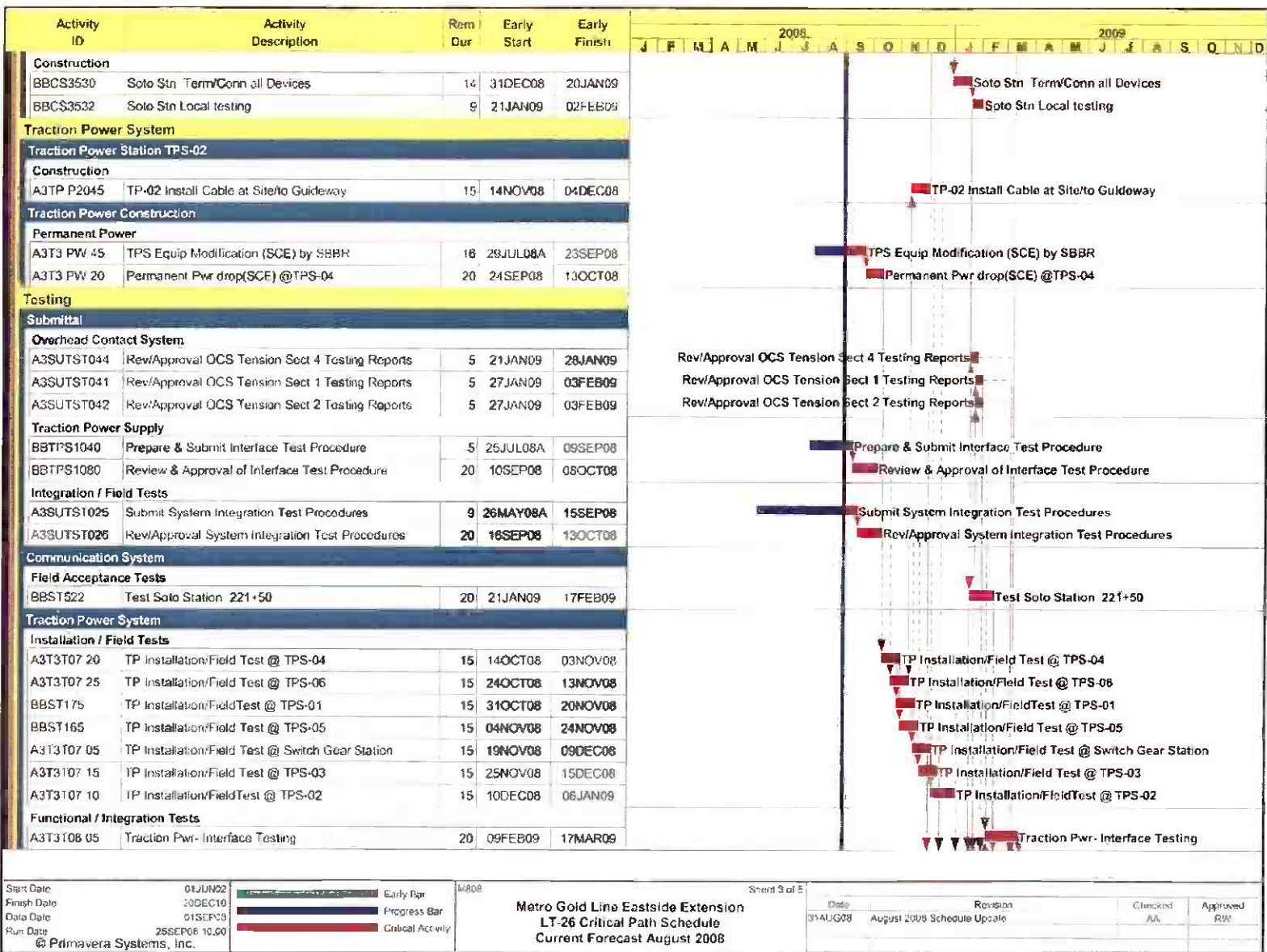
PROJECT MASTER SCHEDULE CRITICAL PATH (1 of 5)



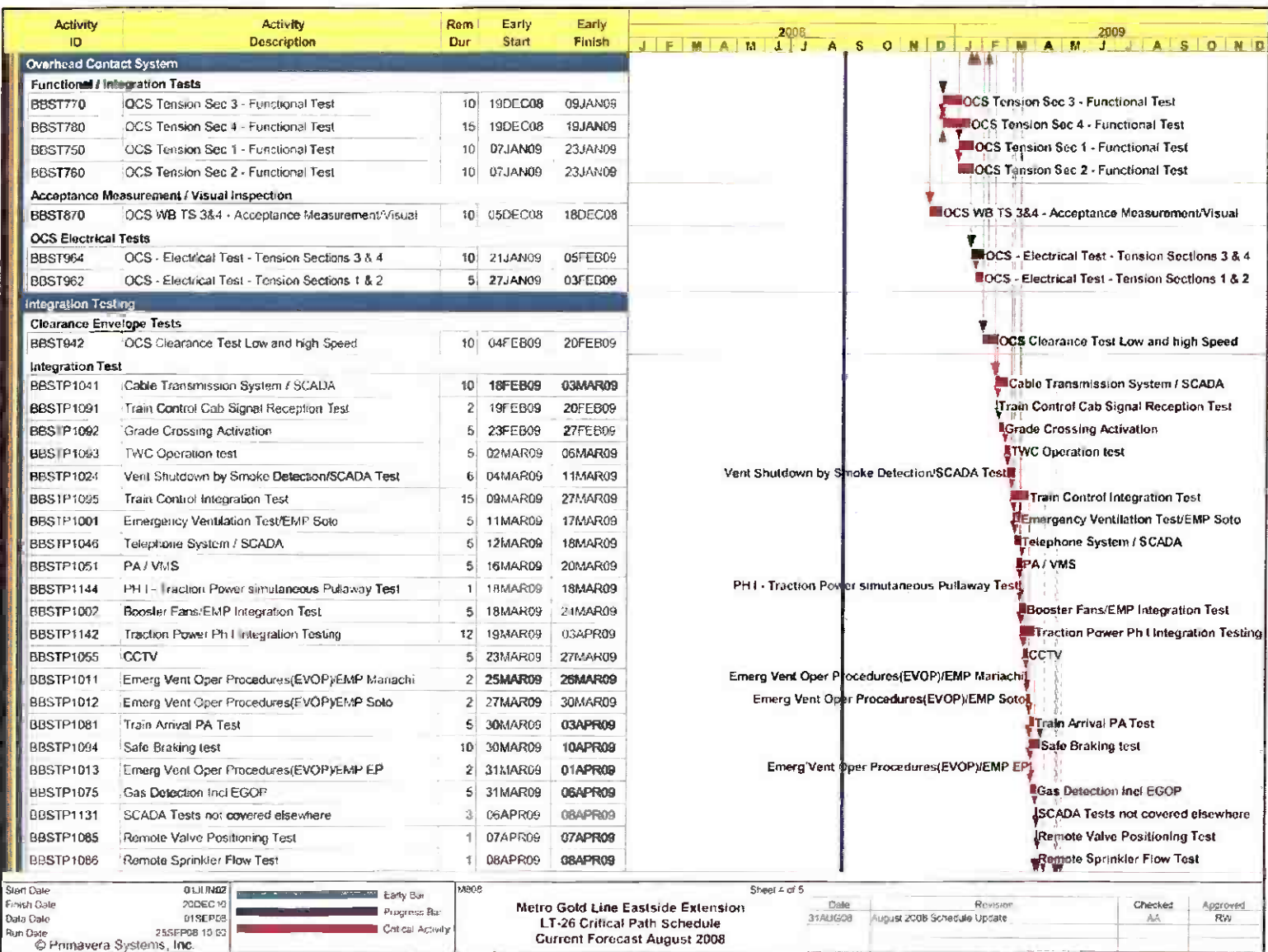
PROJECT MASTER SCHEDULE
CRITICAL PATH (2 of 5)



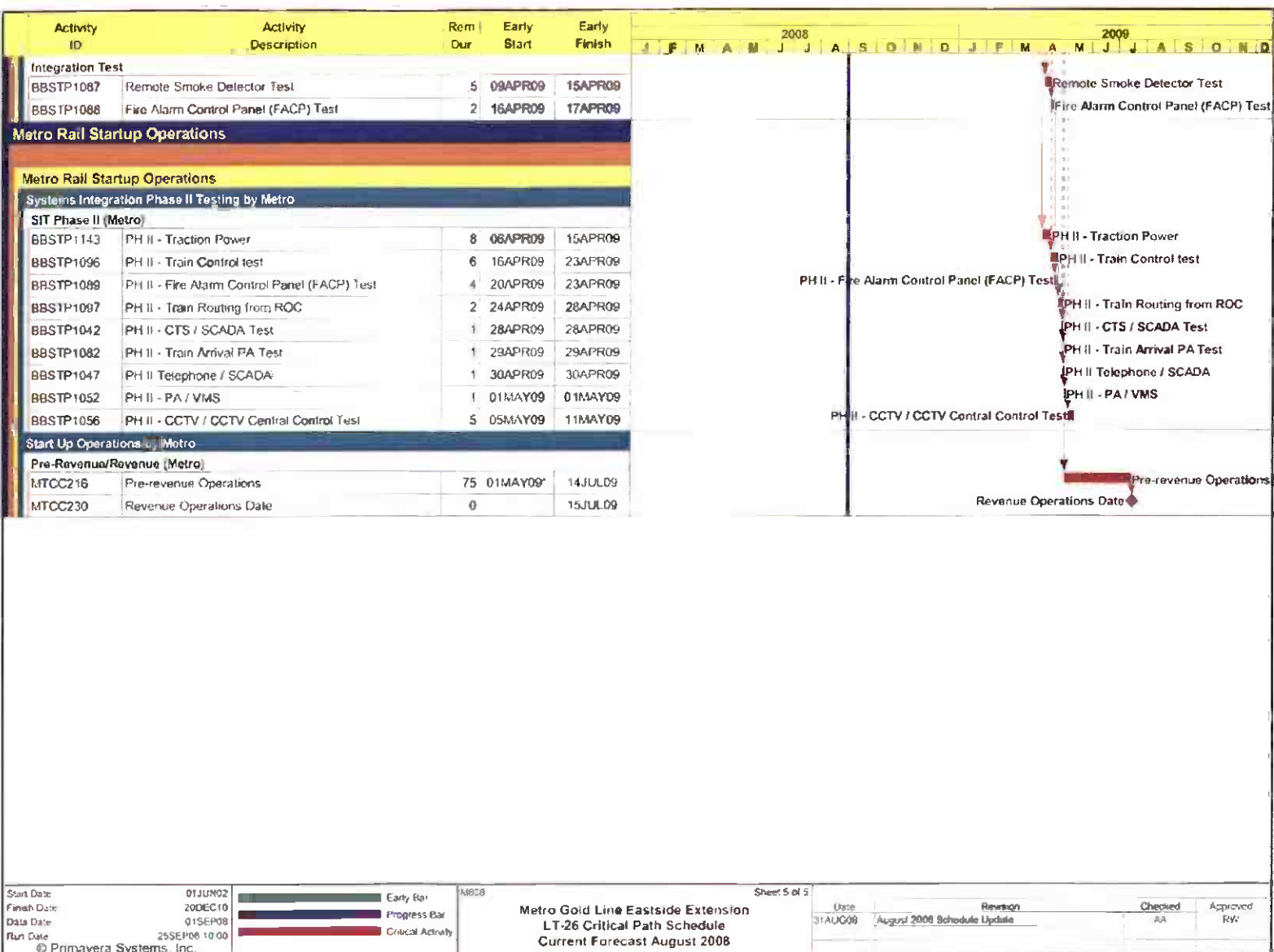
PROJECT MASTER SCHEDULE CRITICAL PATH (3 of 5)



PROJECT MASTER SCHEDULE
CRITICAL PATH (4 of 5)



PROJECT MASTER SCHEDULE CRITICAL PATH (5 of 5)



CRITICAL PATH NARRATIVE

Current Critical Path Analysis

Rail welding in the tunnels was completed this period and the completion of track installation in Segments 1 and 2 is nearing completion. Also, the FRE conduit encasement in the tunnels is nearing completion. The systems subcontractor began installation of hangers and supports for the OCS catenary's assemblies on the westbound tunnel.

There are two parallel critical paths in the current schedule. One is through track completion in Segment 2B and OCS installation in Segment 3, which include both tunnels. The other is architectural finishes and communications installation at Soto Station, and installation of communications throughout the alignment. Local facilities testing are the last stage of the critical path prior to entering the final test stage, where Systems Integration Testing and Pre-Revenue Operations are conducted.

PROJECT COST STATUS

COST REPORT BY ELEMENT ORIGINAL SCOPE ACTIVITIES DOLLARS IN THOUSANDS

ELEM- ENT	DESCRIPTION	ORIGINAL BUDGET	CURRENT BUDGET		COMMITMENTS		EXPENDITURES		CURRENT FORECAST		BUDGET / FORECAST VARIANCE
			PERIOD	TO DATE	PERIOD	TO DATE	PERIOD	TO DATE	PERIOD	TO DATE	
C	CONSTRUCTION	633,221	-	650,702	89	655,407	162	537,424	-	650,702	-
S	SPECIAL CONDITIONS	19,494	-	57,032	204	47,966	1,539	36,134	-	57,032	-
R	RIGHT-OF-WAY	40,358	-	37,681	-	38,488	-	38,283	-	37,681	-
P	PROFESSIONAL SERVICES	135,304	-	135,860	1,563	134,001	590	117,574	-	135,860	-
PC	PROJECT CONTINGENCY	60,254	-	7,401	-	-	-	-	-	7,401	-
PR	PROJECT REVENUE	(4,617)	-	(4,662)	-	-	-	(44)	-	(4,662)	-
SUBTOTAL		884,014	-	884,014	1,856	875,862	2,291	728,371	-	884,014	-
PF	PROJECT FINANCE COST	14,800	-	14,800	450	4,419	450	4,419	-	14,800	-
TOTAL		898,814	-	898,814	2,305	880,281	2,741	733,790	-	898,814	-

NOTE: EXPENDITURES ARE CUMULATIVE THROUGH JULY 2008

PROJECT COST ANALYSIS

Original Budget

The Full Funding Grant Agreement (FFGA) was adopted June 1, 2004 in the amount of \$898.8 million. The Original Budget reflects the adopted FFGA.

Current Budget and Current Forecast

The Current Budget and Forecast remain the same at \$898.8 million.

Commitments

The Commitments increased by \$2.3 million this period primarily due to Environmental Waste Handling Services and continuation of Design Support During Construction. In the Project Finance Cost element there was an increase of \$0.5 million that reflects an interest payment. Interest earned is received monthly and interest payments are made semi-annually. Interest earnings are not projected to be more than the interest costs. The \$880.3 million in Commitments to date represents 97.9% of the Original Budget.

Expenditures

Expenditures are cumulative through July 2008. The Expenditures increased by a total of \$2.7 million this period. In the Construction element there was an increase of \$0.2 million primarily due to costs associated with Contract P2550 – Light Rail Vehicles. In the Special Conditions element there was an increase of \$1.5 million primarily for costs associated with the Dry Utilities Shared Incentive Program. In the Professional Services element there was an increase of \$0.6 million primarily for costs associated with Metro Project Administration. And in the Project Finance Cost element there was an increase of \$0.5 million that reflects an interest payment. The July 2008 invoice for Contract C0803 in the amount of \$11.7 million was posted in the Metro's Financial Information System (FIS) on August 14, 2008 and will be reflected in the next reporting period. The \$733.8 million in Expenditures to date represents 81.6% of the Original Budget.

PROJECT COST STATUS

COST REPORT BY ELEMENT CONCURRENT NON-FFGA PROJECT ACTIVITIES DOLLARS IN THOUSANDS

ELEM- ENT	DESCRIPTION	ORIGINAL BUDGET	CURRENT BUDGET		COMMITMENTS		EXPENDITURES		CURRENT FORECAST		BUDGET / FORECAST VARIANCE
			PERIOD	TO DATE	PERIOD	TO DATE	PERIOD	TO DATE	PERIOD	TO DATE	
C	CONSTRUCTION	18,000	-	41,174	37	35,417	-	22,118	-	41,174	-
S	SPECIAL CONDITIONS	-	-	2,719	137	2,746	12	1,690	-	2,719	-
R	RIGHT-OF-WAY	-	-	-	-	-	-	-	-	-	-
P	PROFESSIONAL SERVICES	-	-	2,897	367	3,333	37	957	-	2,897	-
PC	PROJECT CONTINGENCY	-	-	-	-	-	-	-	-	-	-
PR	PROJECT REVENUE	-	-	(4,087)	(37)	(4,721)	-	(279)	-	(4,087)	-
SUBTOTAL		18,000	-	42,703	504	36,776	49	24,486	-	42,703	-
PF	PROJECT FINANCE COST	-	-	-	-	-	-	-	-	-	-
TOTAL		18,000	-	42,703	504	36,776	49	24,486	-	42,703	-

NOTE: EXPENDITURES ARE CUMULATIVE THROUGH JULY 2008

PROJECT COST ANALYSIS

Original Budget

The Metro Board adopted the Original Budget of \$18.0 million on March 24, 2005.

Current Budget and Current Forecast

The Current Budget and Forecast remain the same at \$42.7 million.

Commitments

The Commitments increased by \$0.5 million this period primarily due to Archeological Support, Design Support During Construction and Construction Management. The \$36.8 million in Commitments to date represents 86.1% of the Current Budget.

Expenditures

Expenditures are cumulative through July 2008. The Expenditures increased by \$0.1 million this period primarily for costs associated with Environmental Mitigation, Metro Project Administration, and Design Support During Construction. The July 2008 invoice for Contract C0803 in the amount of \$1.3 million was posted in the Metro's Financial Information System (FIS) on August 14, 2008 and will be reflected in the next reporting period. The \$24.5 million in Expenditures to date represents 57.3% of the Current Budget.

Metro Gold Line Eastside Extension
Monthly Project Status Report

August 2008

FINANCIAL/GRANT STATUS – ORIGINAL SCOPE ACTIVITIES

AUGUST 2008

STATUS OF FUNDS BY SOURCE

SOURCE	(A) ORIGINAL BUDGET	(B) TOTAL FUNDS ANTICIPATED	(C) TOTAL FUNDS AVAILABLE	(D) COMMITMENTS \$	(D/B) %	(E) EXPENDITURES \$	(E/B) %	(F) BILLED TO FUNDING SOURCE \$	(F/B) %
FEDERAL - SECTION 5309 NEW START	\$490.700	\$490.700	\$333.593	\$482.572	98%	\$379.885	77% (1)	\$359.894	73%
FED - SECTION 5309 FIXED GUIDEWAY	\$23.100	\$12.000	\$12.000	\$12.000	100%	\$12.000	100%	\$12.000	100%
FEDERAL - CMAQ	\$10.300	\$10.300	\$10.276	\$10.276	100%	\$10.276	100%	\$10.276	100%
REGIONAL IMPROVEMENT PROG - FEO	\$179.600	\$4.600	\$4.600	\$4.600	100%	\$4.600	100%	\$4.600	100%
REGIONAL IMP PROG - STATE	\$0.600	\$175.600	\$131.796	\$175.600	100%	\$131.796	75%	\$131.796	75%
STATE TCRP	\$45.000	\$45.000	\$45.000	\$45.000	100%	\$45.000	100%	\$45.000	100%
PROP A 35% / PROP C 40%/PROP 25%	\$124.614	\$135.714	\$135.714	\$135.714	100%	\$135.714	100%	\$135.714	100%
LEASE REVENUES	\$10.100	\$10.100	\$10.100	\$10.100	100%	\$10.100	100%	\$10.100	100%
ACCRUALS									
SUB-TOTAL	\$884.014	\$884.014	\$683.079	\$875.862	99%	\$729.371	83%	\$709.380	80%
PROP A / PROP C (INTEREST COST)	\$14.800	\$14.800	\$4.419	\$4.419	30%	\$4.419	30%	\$3.313	22%
TOTAL	\$898.814	\$898.814	\$687.498	\$880.281	98%	\$733.790	82%	\$712.693	79%

NOTE: EXPENDITURES ARE CUMULATIVE THROUGH JULY 2008.

STATUS OF FUNDS ANTICIPATED

FEDERAL SECTION 5309 NEW STARTS: LACMTA has received an appropriation of \$333.6M through FY08. LACMTA submitted a grant application for \$78.4 M in March 2008. The grant was approved on June 17, 2008 and funds are available for drawdown.

RIP-STATE: LACMTA's allocation request of \$43.8M to the CTC was approved in July 2008, contingent on State Budget approval.

FINANCIAL/GRANT STATUS
CONCURRENT NON-FFGA PROJECT ACTIVITIES

AUGUST 2008

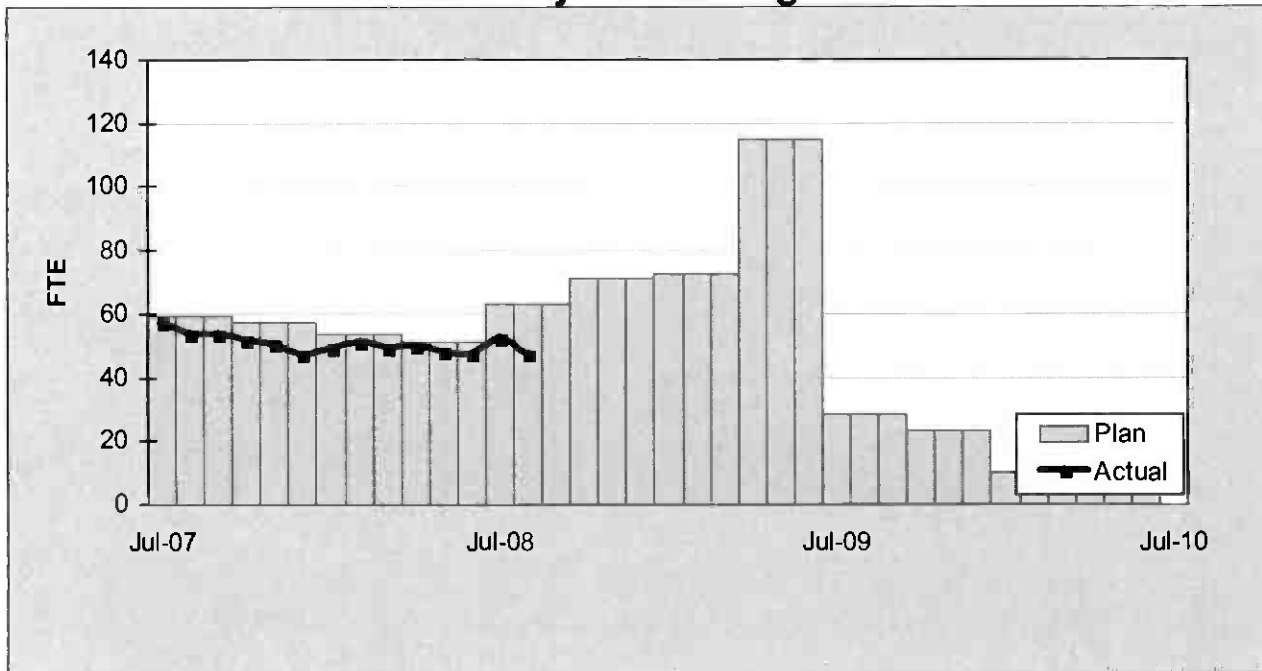
STATUS OF FUNDS BY SOURCE

SOURCE	(A) APPROVED BUDGET	(B) TOTAL FUNDS ANTICIPATED (1)	(C) TOTAL FUNDS AVAILABLE	(D) COMMITMENTS \$	(D/B) %	(E) EXPENDITURES \$	(E/B) %	(F) BILLED TO FUNDING SOURCE \$	(F/B) %
PROP C 40%	\$14.000	\$14.000	\$14.000	\$14.000	100%	\$7.971	57%	\$5.107	36%
PROP C 10%	\$4.000	\$4.000	\$4.000						
STATE TCR	\$0.000	\$24.086	\$24.086	\$22.776	95%	\$16.515	69%	\$16.515	69%
STATE TSA	\$0.000	\$0.617	\$0.000	\$0.000	0%	\$0.000	0%	\$0.000	0%
TOTAL	\$18.000	\$42.703	\$42.086	\$36.776	86%	\$24.486	57%	\$21.622	51%

NOTE: EXPENDITURES ARE CUMULATIVE THROUGH JULY 2008.

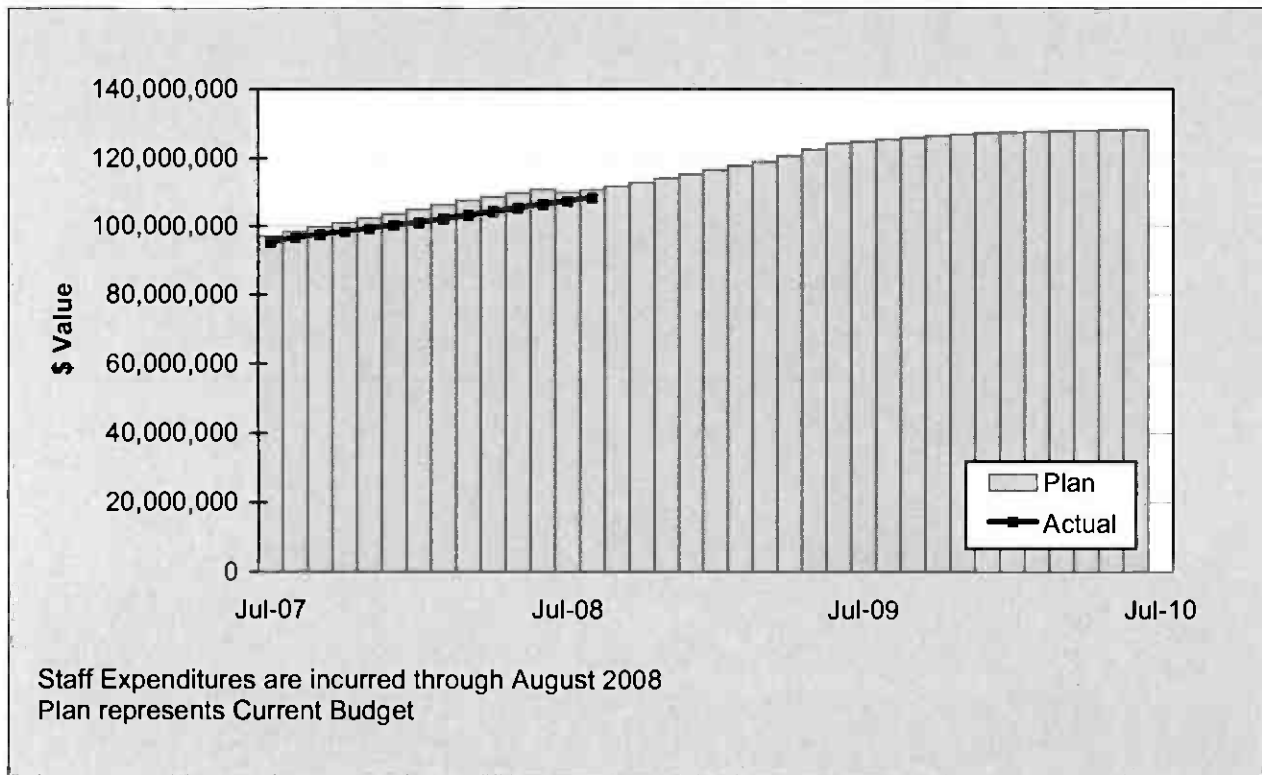
STAFFING STATUS

Total Project Staffing - FTES



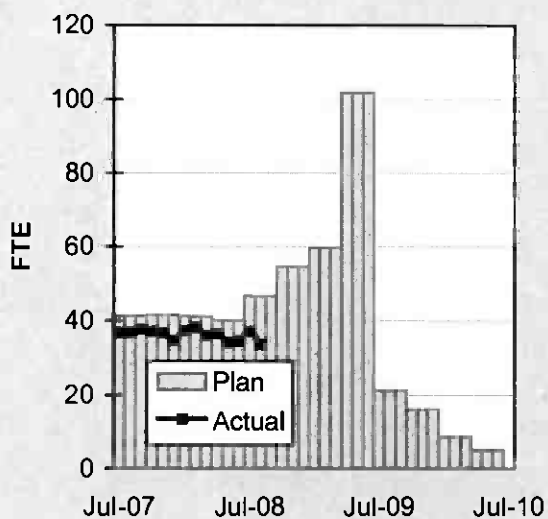
STAFFING STATUS

TOTAL PROJECT STAFFING COST

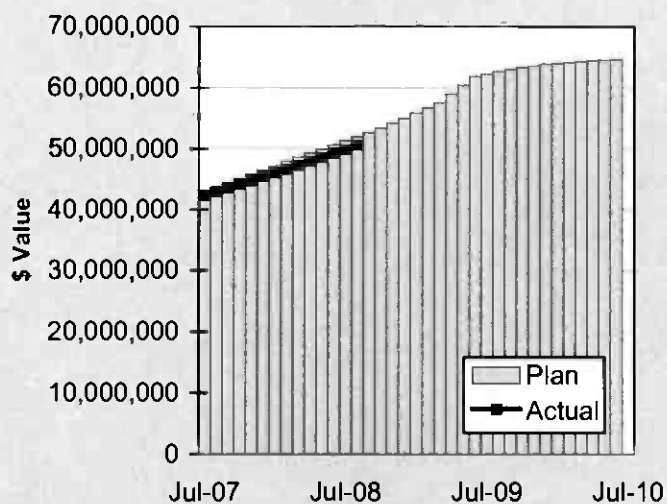


STAFFING STATUS

DIRECT AGENCY - FTES

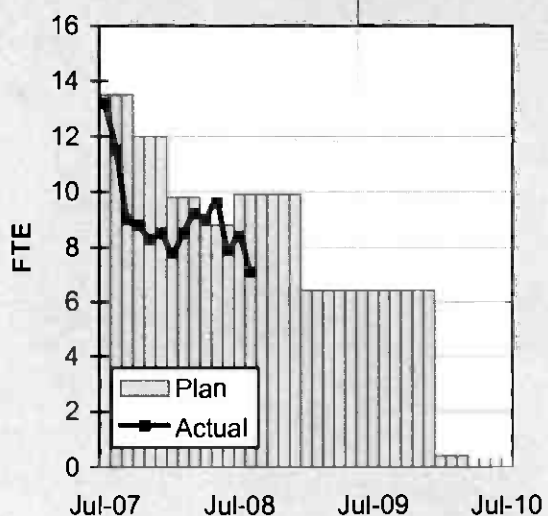


DIRECT AGENCY - COST

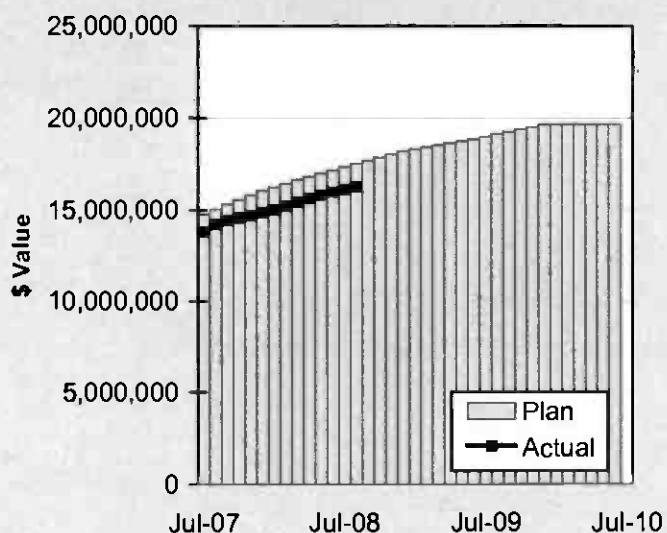


Staff Expenditures are incurred through August 2008.
Plan represents Current Budget

CONSTRUCTION MGMT - FTES



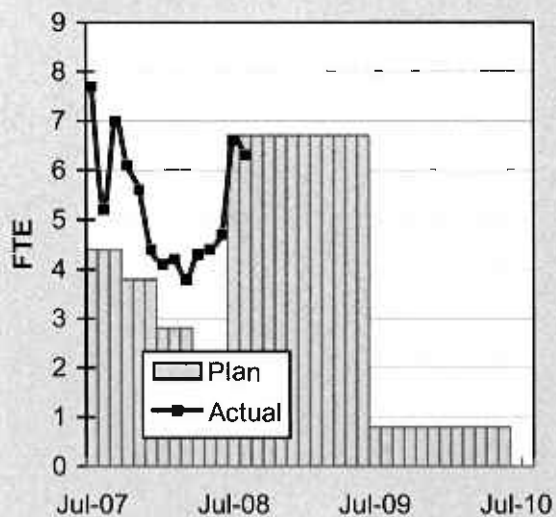
CONSTRUCTION MGMT - COST



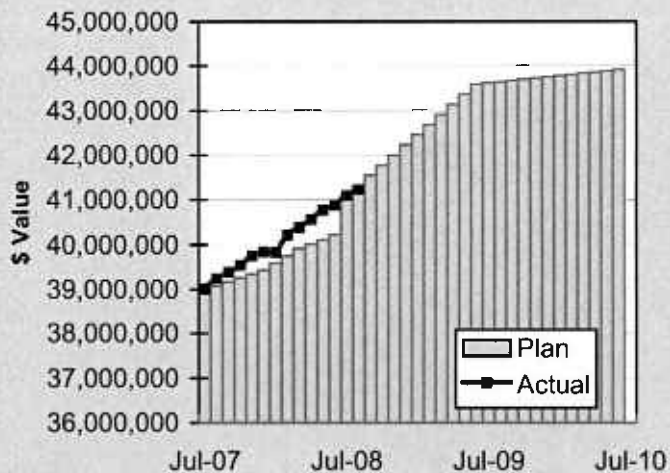
Staff Expenditures are incurred through August 2008.
Plan represents Current Budget

STAFFING STATUS

ELRT PARTNERS - FTES



ELRT PARTNERS - COST



Staff Expenditures are incurred through August 2008.
Plan represents Current Budget

REAL ESTATE STATUS

- For C0803, the tunnel portion of the alignment, 40 parcels were required for acquisition (11 full takes, 4 partial takes, 20 sub-surface easements/temporary construction easements, 3 sub-surface easements/building protection, and 2 building protections).
- For C0803, the at-grade portion of the alignment, 27 parcels were required for acquisition (17 full takes, 9 partial takes and 1 surface easement). Nine parcels were required for the LAUSD Ramona Opportunity High School site reconfiguration.
- For C0802, 2 parcels were required (1 surface easement and 1 full take parcel).
- Two Encroachment Permits were obtained from Caltrans for the C0803-Tunnel. Three street closures were obtained from the City of LA.

REAL ESTATE ACQUISITION SCHEDULE SUMMARY

<i>Number of Parcels</i>				Behind Schedule	
					Avg. Calendar Days
	Required	Acquired	On Schedule	Number	
This Period	69	69	0	0	0
Last Period	69	69	0	0	0

REAL ESTATE STATUS TO DATE BY CONTRACT ACQUISITION PHASE

CONTRACT NO.	Number of Parcels (A+B+C+D+E)	Agreements Signed (A)	Parcels in Condemnation (B)	Under Negotiation (C)	In Appraisal Process (D)	Inactive Parcels (E)	Parcels Available
C0803-Tunnel	40	40	0	0	0	0	40
C0803-At-Grade	27	27	0	0	0	0	27
C0802	2	2	0	0	0	0	2
TOTAL	69	69	0	0	0	0	69
LAST PERIOD	69	69	0	0	0	0	69

ENVIRONMENTAL STATUS

- Dental molars from the human remains discovered at the Los Angeles Crematorium were sent to the University of Illinois for DNA testing.

COMMUNITY RELATIONS STATUS

- Distributed three construction notices which reached approximately 21,500 residences/businesses. Activities included grind and overlay, concrete pours, sidewalk demolition and street repaving.
- Met with 16 residents/business owners to coordinate construction activities.
- Delivered three Open During Construction banners and thirty-six banners promoting the Project.
- Held monthly Executive Review Advisory Committee Meeting and Review Advisory Committee Meeting.
- Supported the Los Angeles Music and Arts School Stars for the Arts Latin Jazz celebration.

QUALITY ASSURANCE STATUS

- Quality Management continues to review contractor's monthly Asphalt, Concrete Compressive Strength and Soils Compaction reports - areas of concern are coordinated to resolution with the onsite lab representative.
- The results of field surveillance activities continue to be identified in Weekly Surveillance Reports including color digital pictures identifying sites of surveillance and issues of concern.

SAFETY STATUS

- Participated in weekly progress meetings with Construction Managers and ELRTC management personnel to discuss safety related issues and construction schedule.
- Participated in Readiness Review Critical Lift Meetings.
- Conducted security reviews.
- Monitored construction activities on a daily basis, including weekends, to ensure contractor compliance with Contract Specification.
- ELRTC and their subcontractors reported zero recordable incidents and 83,461 work hours for the month of August 2008. A total of thirty-nine (39) recordable incidents have occurred Project to Date. Total Project to Date work hours are 3,446,368. Injury Rates for Recordable incidents are 2.2; well below the published incident rate of 5.3.

ART DEVELOPMENT STATUS

- Coordination meetings with Metro Construction and ELRTC for artwork fabrication/installation schedules for eight stations.

Metro Gold Line Eastside Extension
Monthly Project Status Report

August 2008

THIRD PARTY AGREEMENT STATUS

Third Party	Type of Agreement	Forecast Execution Date	Required Need Date	Status/ Comments
City of Los Angeles	Amendment	Completed	N/A	Executed December 2002.
Los Angeles County	Master	Completed	N/A	Executed April 2003.
Caltrans (All Projects)	Master	Completed	N/A	Executed July 2003.
Caltrans (101)	Design	Completed	N/A	Executed July 2003.
Caltrans (101)	Construction	Completed	N/A	Executed September 2003.
Caltrans (101)	Maintenance	12/08	Project Completion	The initial negotiation meeting was held on 1/9/03. LACMTA received a draft from Caltrans on 1/22/04. LACMTA reviewed and submitted the agreement to Caltrans on 2/10/04. A follow up call was made on 10/20/05 but no response to date.
LADWP (Water/Power)	Amendment	9/08	*6/04	LACMTA Management, County Counsel, and LACMTA Board staff have participated in meetings with DWP to complete negotiations, since the "Deadline and Delay" clause is not acceptable to LADWP. Alternative language was forwarded to LACMTA Management and County Counsel for review on 10/7/05. LACMTA CEO is to speak with LADWP CEO.
So. Cal. Edison Co.	Amendment	N/A	N/A	SCE Executive Legal Branch stated on 2/25/05 they have no intention of signing agreement.
The Gas Company	Amendment	Completed	N/A	Executed May 2005.
SBC/AT & T	Amendment	Completed	N/A	Executed May 2005. SBC has been acquired by AT&T and has formed a new corporation TCM for work in Southern California. A new agreement has been negotiated with Metro and TCM, which was approved by the Metro Board in April. The new agreement mirrors the SBC agreement except for some minor changes in the insurance language.
Adelphia Cable Company	Amendment	9/08	*6/04	LACMTA received a draft from Adelphia for review. LACMTA Management and County Counsel reviewed the amendment and returned the document to Adelphia with comments. Adelphia's Legal Department is reviewing the document and follow-up calls were made on 10/20/05 and 11/16/05.
Calif Wtr Service Co	Master	Completed	N/A	Executed May 2005.
L.A. County Sanitation Districts	N/A	N/A	N/A	In a letter dated 3/26/03, the Sanitation District stated that there is not a need for an agreement since there are no relocations related to their facilities. The Sanitation District will review submittals related to encasements of their facilities on Indiana Street.
MCI Worldcom	Amendment	Completed	N/A	Executed May 2005.
Metropolitan Wtr Dist	Amendment	Completed	N/A	Executed May 2003.

THIRD PARTY AGREEMENT STATUS

Third Party	Type of Agreement	Forecast Execution Date	Required Need Date	Status/ Comments
Verizon Wireless	Amendment	9/08	*6/04	The revised draft amendment was hand delivered to Verizon on 11/19/03 and an electronic copy was sent to them 2/19/04. Verizon did respond with comments, which were reflected in a revised agreement sent 4/05. Verizon legal is completing final review. Follow up calls were made on 10/20/05 and 11/16/05. Verizon has now joined MCI and once the legal work is complete in late February 2006, LACMTA may be able to use the MCI Agreement for Verizon work. E-mailed MCI Agreement to Verizon Representative for consideration as overall agreement covering Verizon and MCI as the new Verizon.
GST	N/A			Facilities are not impacted by Eastside Construction
Exxon Mobil Oil Company	N/A			Facilities are not impacted by Eastside Construction
Pacific Pipeline Company	N/A			Facilities are not impacted by Eastside Construction
Kinder Morgan Pipeline Company	N/A			Facilities are not impacted by Eastside Construction
Tosco Refining Company	N/A			Facilities are not impacted by Eastside Construction
Equilon Pipeline Company	N/A			Facilities are not impacted by Eastside Construction
Level 3 Communications	N/A			Facilities are not impacted by Eastside Construction
Broadwing Communications	N/A			Facilities are not impacted by Eastside Construction
Eller Media	N/A			Facilities are not impacted by Eastside Construction

* Work will be performed under the current MCA and will not delay ongoing work.

Metro Gold Line Eastside Extension

Monthly Project Status Report

August 2008

CPUC CROSSING SUMMARY

Batch	Application Status	Initial Package Submittal to MTA	Field Diagnostic Meeting	Revised Drawings Due to MTA	Draft Write-up to MTA	Draft Package Sumbittal to PUC Local office and Agencies	Final Package Submittal to PUC	CPUC Final Approval
1	Complete	8/5/02	8/12/02	8/26/02	9/6/02	9/6/02	9/6/2002	Approved
2	Complete	10/4/02	10/11/02	10/25/02	11/6/02	11/22/02	11/22/2002	Approved
3	Complete	2/6/03	2/27/03	3/10/03	1/27/03	4/11/02	4/18/2003	Approved
4	Complete	12/14/02	1/15/03	1/29/03	11/13/02	5/5/03	6/18/2003	Approved
4A	Complete	1/24/03	1/29/03	3/14/03	2/7/03	9/5/03	1/23/2004	Approved
6	Complete	3/19/03	3/26/03	6/20/03	2/7/03	9/5/03	9/12/2003	Approved
7	Complete	12/11/02	12/18/02	3/31/03	2/7/03	5/5/03	7/25/2003	Approved
8	Complete	11/26/02	12/18/02	3/31/03	11/15/02	6/6/03	5/21/2004	Approved
9	Complete	1/20/03	1/29/03	3/31/03	11/22/02	8/29/03	9/12/2003	Approved
10	Complete	12/11/03	12/18/02	3/10/03	11/22/02	5/5/03	8/29/2003	Approved
11	Complete	2/13/03	2/27/03	4/18/03	12/6/02	6/6/03	8/29/2003	Approved
12	Complete	2/13/03	2/27/03	4/18/03	12/13/02	6/6/03	9/5/2003	Approved
13	Complete	2/6/03	2/20/03	4/18/03	2/21/03	6/6/03	9/1/2004	Approved
14	Complete	1/8/03	1/15/03	3/14/03	11/12/02	8/29/03	10/30/2003	Approved
15	Complete	2/26/03	N/A	N/A	2/21/03	6/6/03	8/29/2003	Approved
16	Complete	2/26/03	N/A	N/A	2/28/03	6/6/03	8/29/2003	Approved
17	Complete	1/8/03	1/15/03	N/A	2/14/03	5/5/03	6/13/2003	Approved
18	Complete	1/8/03	1/15/03	3/20/03	2/14/03	5/5/03	6/13/2003	Approved
Agency Responsible		ELRTP	MTA	ELRP	ELRTP	MTA	MTA	

Batch No. 5 has been removed, as the Midway Yard will be utilized.

SHADED AREAS REPRESENTS COMPLETION

All applications are approved.

Batch Descriptions	
1 1st / Alameda	10 3rd / Ford
2 Alameda / Temple	3rd / McDonnell
1st / Hewitt	3rd / Arizona
Ped Crossings @ 1st / Alameda Station	11 3rd / Mednik
3 1st / Vignes	3rd / Civic Center Drive
4 1st / Lorena	3rd / La Verne
4A Indiana/1st	12 3rd / Dreways to Sherriff's Station
Indiana/3rd	3rd / Wood / Via Corona / Pomona / Beverly
Indiana Pedestrian Crossing	13 3rd / 60 Fwy WB Connector
6 1st / Mission	3rd / 60 Fwy over ELRT
1st / Anderson	3rd / 710 Fwy SW Connector
1st / Clarence	3rd / Bridge over 710 Fwy
1st / Utah	3rd / 710 Fwy SE Connector
1st/Gless Pedestrian Crossing	14 Union Station Service Road
7 3rd / Rowan	15 1st / Santa Fe
8 3rd / Gage	1st / Myers
3rd / 60 Fwy WB Ramps	16 1st / MTA
3rd /Downey	1st / BNSF
	1st / Union Pacific

CONTRACT C0802 STATUS

Description: 101 Freeway Bridge Overcrossing Contractor: Brutoco Engineering & Construction		Contract No. C0802 Status as of: August 29, 2008																													
Progress/Work Completed: * Bridge work was completed in March 2007 * Plant Maintenance period achieved November 2007 Areas of Concern: * None		Major Activities (In Progress): * None Major Activities Next Period: * None																													
Schedule Summary: Date of Award: 09/07/04 Notice to Proceed: 09/22/04 Original Contract Duration: 700 CD Current Contract Duration: 775 CD Elapsed Time from NTP: 904 CD * * Note: Elapsed time to Milestone # 1 completion		<table border="1" style="width: 100%; border-collapse: collapse;"> <thead> <tr> <th style="width: 20%;"></th> <th style="width: 10%;">Original Contract Dates</th> <th style="width: 10%;">Time Extension</th> <th style="width: 10%;">Current Contract</th> <th style="width: 10%;">Forecast</th> <th style="width: 10%;">Variance CDs</th> </tr> </thead> <tbody> <tr> <td>Notice to Proceed</td> <td>09/22/04</td> <td>0</td> <td>09/22/04</td> <td>09/22/04</td> <td>0</td> </tr> <tr> <td>Milestone 1 - Complete Abutment No. 10</td> <td>06/26/06</td> <td>49</td> <td>08/14/06</td> <td>03/15/07</td> <td>-213</td> </tr> <tr> <td>Milestone 2- Complete All Work Without Plant Establishment</td> <td>08/23/06</td> <td>75</td> <td>11/06/06</td> <td>08/06/07</td> <td>-273</td> </tr> </tbody> </table>							Original Contract Dates	Time Extension	Current Contract	Forecast	Variance CDs	Notice to Proceed	09/22/04	0	09/22/04	09/22/04	0	Milestone 1 - Complete Abutment No. 10	06/26/06	49	08/14/06	03/15/07	-213	Milestone 2- Complete All Work Without Plant Establishment	08/23/06	75	11/06/06	08/06/07	-273
	Original Contract Dates	Time Extension	Current Contract	Forecast	Variance CDs																										
Notice to Proceed	09/22/04	0	09/22/04	09/22/04	0																										
Milestone 1 - Complete Abutment No. 10	06/26/06	49	08/14/06	03/15/07	-213																										
Milestone 2- Complete All Work Without Plant Establishment	08/23/06	75	11/06/06	08/06/07	-273																										
Physical Percent Complete: Physical completion ** as of this reporting period is: 100.00% ** Note: Physical completion assessment reflects work completed and invoice amount shown in Caltrans Monthly Progress/Expense Report No. 30.		<table style="width: 100%;"> <tr> <td style="width: 70%;">Cost Summary:</td> <td style="width: 30%; text-align: right;">\$ In millions</td> </tr> <tr> <td>1. Award Value:</td> <td style="text-align: right;">6.42</td> </tr> <tr> <td>2. Executed Modifications:</td> <td style="text-align: right;">0.00</td> </tr> <tr> <td>3. Approved Change Orders:</td> <td style="text-align: right;">0.00</td> </tr> <tr> <td>4. Current Contract Value (1+2+3):</td> <td style="text-align: right;">6.42</td> </tr> <tr> <td>5. Incurred Cost:</td> <td style="text-align: right;">6.42</td> </tr> </table>						Cost Summary:	\$ In millions	1. Award Value:	6.42	2. Executed Modifications:	0.00	3. Approved Change Orders:	0.00	4. Current Contract Value (1+2+3):	6.42	5. Incurred Cost:	6.42												
Cost Summary:	\$ In millions																														
1. Award Value:	6.42																														
2. Executed Modifications:	0.00																														
3. Approved Change Orders:	0.00																														
4. Current Contract Value (1+2+3):	6.42																														
5. Incurred Cost:	6.42																														

Metro Gold Line Eastside Extension
Monthly Project Status Report

August 2008

CONTRACT C0803 STATUS

Description: Tunnel, Stations, Trackwork & Systems Contractor: Eastside LRT Constructors	Contract No. C0803 Status as of: August 29, 2008					
Progress/Work Completed: * Poured Mariachi Plaza Sta. (MPS) entrance roof slab * Poured mud mat for exhaust vent shaft # 3 and stair # 3 at MPS * Placed remaining steel light pendants at MPS platform & mezzanine * Poured Soto Station (SS) mechanical room & vent shaft roof slab * Poured stair # 1 sloping concrete slab at the Soto Station * Installed all platform ceiling supports at the Soto Station * Completed backfill and street restoration at the East Portal * Completed CMU walls at the East Portal mezzanine level * Completed MSE wall duct bank along Alameda Street * Set TPS-01 and TPS-02 equipment on their foundations * Installed train control (TC) conduit and pull boxes in Seg. 1 & 2B * Poured concrete invert for track cross-over in Segment 2B * String OCS messenger and contact wire along Segments 2A & 2B * Completed rail welding in the tunnels and began OCS installation * Installed canopy sections at Little Tokyo/Arts District and Indiana Stations * Poured the cross-over track topping slab at 3rd Street & Ditman * Began final street paving (grind/overlay) in Segments 6 and 7 * TC&C room lighting at Atlantic & East L. A. Civic Center Stations * Delivered elevators for Mariachi Plaza and Soto Stations * Factory acceptance testing performed on the emergency fans Areas of Concern: None	Major Activities (In Progress): * Backfill the plaza area and build vent shafts upper walls at MPS * Lighting at MPS mechanical, auxiliary power and TC&C rooms * Ceiling supports and grid at MPS platform and mezzanine levels * Soto Station entrance upper walls at the plaza level * CMU walls at Soto Station mezzanine rooms * Install mechanical/electrical equipment at both MPS and SS * Plenum slab at the East Portal * Track installation at Union Station and Segments 1, 2A and 2B * String OCS wire and place "C" arms in Segments 1, 2A and 2B * CMU walls at TPS-01, TPS-02 and Ancillary Switch Gear Sta. * Underground OCS installation-tunnel assemblies and string wire * Pull train control signal cable between Downey Rd. and E. Portal * Pull communications wire between Indiana and Maravilla Sta. * Install systems equipment-Indiana & Maravilla Sta. TC&C rooms * Terminate AC & DC cables at the TPS-03, TPS-04 and TPS-05 * Final paving, striping and mountable curb in Seg. 5, 6 and 7 * Fabricate emergency fans and escalators Major Activities Next Period: * Complete upper walls and vent shafts at MPS and SS plaza area * Install elevators, escalators and emergency fans at MPS and SS * Install communication and electrical equipment at MPS and SS * Complete track construction throughout the alignment * TPS-01, TPS-02, TPS-03 and Ancillary Switch Gear construction * Architectural platform paving at Maravilla Station * OCS equipment and wire installation-Segments 1, 2A, 2B and 3 * Stations TC&C rooms equipment and lighting installation * Pull train control, power and comms. cable - L. A. County side * Final paving and punch list items Segments 5, 6 and 7					
Schedule Summary: Date of Award: 06/01/04 Notice to Proceed: 07/01/04 Original Contract Duration: 1795 CD Current Contract Duration: 1800 CD Elapsed Time from NTP: 1521 CD Option D Contract duration 90 CD Complete		Original Contract Dates	Time Extension	Current Contract	Forecast	Variance CDs
	Notice to Proceed	07/01/04	0	07/01/04	07/01/04	0
	Milestone 1 - Contract Completion. Complete all systems integration testing and ready for MTA's pre-revenue operation testing.	12/31/08	91	04/01/09	04/09/09	-8
	Milestone 3 - Complete Universal Fare System Equipment area.	04/30/08	250	01/05/09	01/05/09	0
	Milestone 5 - Vacate all staging areas and turn over to MTA.	05/30/09	87	08/25/09	08/25/09	0
	Milestone 6 - Complete design and construction of Option D work.	09/28/04	0	09/28/04	09/28/04	0
Physical Percent Complete: Physical completion * as of this reporting period is: 85.06% * Note: Physical completion assessment reflects work completed and work in progress.	Cost Summary: \$ In millions 1. Award Value: 600.45 2. Executed Modifications: 12.72 3. Approved Change Orders: 0.40 4. Current Contract Value (1+2+3): 613.57 5. Incurred Cost: 533.72					

CONTRACT E700051F STATUS

Description: 1st Street Bridge Strengthening Contractor: The Griffith Company		Contract No. E700051F Status as of: August 29, 2008					
Progress/Work Completed: * Bridge turned over to Metro on October 26, 2007		Major Activities (In Progress): * None					
Areas of Concern: * None		Major Activities Next Period: * None					
Schedule Summary:			Original Contract Dates	Time Extension	Current Contract	Forecast	Variance CDs
Date of Award: 01/19/07 Notice to Proceed: 02/06/07 Original Contract Duration: 251 CD Current Contract Duration: 281 CD Elapsed Time from NTP: 281 CD		Notice to Proceed	02/06/07	0	02/06/07	02/06/07	0
		Milestone 1 - Substantial Completion	10/15/07	30	11/14/07	11/14/07	0
Physical Percent Complete: Physical completion as of 11/14/07: 100.00% * * As reported by the City of Los Angeles, Department of Contract Administration		Cost Summary: \$ In millions 1. Award Value: * 4.26 2. Executed Modifications: 0.00 3. Approved Change Orders: 0.05 4. Current Contract Value (1+2+3): 4.31 5. Incurred Cost: 4.31 * City of Los Angeles					

CONTRACT P2550 STATUS

Description: 2550 Rail Vehicle Program Contractor: AnsaldoBreda, Italy (AB)		Contract No. P2550 Status as of: August 29, 2008			
Progress/Work Completed: 1. As of August 29th, vehicle 714, 715 and 716 have arrived at MGD Shop and are undergoing testing for acceptance by MTA. Vehicle 701 and 702 have been returned to Pittsburgh for upgrade. Vehicle 705 will be returned to Pittsburgh in September for upgrade. 2. Vehicle final assembly work continues in Pittsburg, CA. 3. Shipment of foreign and domestic parts for final assembly continue to arrive in Pittsburg, CA. 4. Vehicle 704 has been accepted on August 6, 2008. Vehicle 712 was accepted on August 29, 2008. 5. Several Engineering meetings with AB have been held to evaluate progress and to close open items, including visits to Pittsburg Plant. 6. Vehicle Nos. 704, 706, 708, 710, 711 and 712 have been in operation on Metro Gold Line since acceptance. 7. Vehicle Nos. 713 and 714 are the next vehicles to be accepted. Areas of Concern: Since Vehicles 706 and 708 have been in revenue service, vehicles have experienced propulsion and low voltage power supply problems. AB Engineers have tested vehicles and interim corrective actions have been implemented. Final hardware and software solution is to be implemented in September 2008.		Major Activities (In Progress): 1. AnsaldoBreda's manufacturing plants in Pistoia and Naples, Italy continue to prepare carshells and subassemblies for shipment to U.S.A. Pittsburg plant continues vehicle assembly work. 2. Testing of Vehicles 713 & 714 is ongoing in Los Angeles for next vehicle acceptance. 3. Weekly project meetings will be held to close open items. Major Activities Next Period: 1. Several Technical Progress meetings will be held to emphasize the urgency of resolution of remaining critical items for final acceptance of vehicles. 2. Cars 713 and 714 will continue final testing for Conditional Acceptance in September 2008. Vehicle 715 will be tested for the next acceptance. 3. AB to continue working propulsion and low voltage power supply issues and implement final corrective software and hardware.			
			Quantity	Contract Total Quantity	Balance Due
Schedule Summary:		Notice to Proceed 6/6/2003A			
Date of Award: 04/24/03					
Notice to Proceed: 06/06/03					
Original Contract Duration: 1442 CD					
Elapsed Time from NTP: 1847 CD					
Note: Metro and AnsaldoBreda agreed to Mod No. 8 which extended the Options ordering period from April 2008 to October 2008, Currently negotiating extension of Options to July 2009 . A schedule of vehicle delivery has been submitted by AB with 50th (last) car delivered by December 2009.					
		Notice 1 - Includes Vehicles 704, 706, 708, 710, 711 and 712.			
		Notice 2 - Includes Ve			
Physical Percent Complete:		Cost Summary: \$ In millions			
Percent of LRVs assembled = 34/50 = 78%		1. Award Value:			
		Pasadena (Proj. No.: 800151) 126.99			
		Eastside Ext. (Proj. No.: 800088) 31.75			
		Total Award Value 158.74			
Percent Work Product Invoiced through August 2008 is 51%		2 Executed Modifications 0.00			
		3 Approved Change Orders: 0.00			
		4 Current Contract Value (1 + 2 + 3): 158.74			
		5 Payments or invoices in process: 80.75			

CONSTRUCTION PHOTOGRAPHS



Welding rail within the tunnels.



Construction of the Boyle Heights/Mariachi Plaza station entrance and pedestrian plaza.

CONSTRUCTION PHOTOGRAPHS



View looking south of the 101 Freeway Bridge Overcrossing.



Street restoration at the East Portal.

CONSTRUCTION PHOTOGRAPHS



Canopy erection at the Little Tokyo/Arts District Station.



Installation of the fence along the U-channel.

CONSTRUCTION PHOTOGRAPHS



Placement of concrete walkways at Indiana Station.

APPENDIX

COST AND BUDGET TERMINOLOGY

ESTIMATED PROJECT COSTS: Estimated project costs are based upon the current project cost estimates that are produced during the engineering design phase.

COMMITMENTS: The total of actual contract awards, executed change orders or amendments, approved work orders of Master Cooperative Agreements, offers accepted for purchase of real estate, and other LACMTA actions that will result in specific expenditures at a future time.

INCURRED COST: The total value of work performed to date of services received, and acquired materials or properties.

EXPENDITURES: The total dollar amount of checks written by the LACMTA's Accounting department for contractor or consultant invoices, third party invoices, staff salaries, and closing payments for escrow accounts that is reported in the LACMTA's Financial Information System (FIS).

CONSTRUCTION: Includes guideways, yards and shops, systems equipment, stations, and vehicles.

PROFESSIONAL SERVICES: Includes general engineering, construction management services, consultant design support services during construction, legal counsel, and agency (LACMTA staff) costs.

RIGHT-OF-WAY: Includes real estate appraisals, purchase cost of parcels, easements, right-of-entry permits, escrow fees, and tenant relocation.

UTILITY/AGENCY FORCE ACCOUNT: Includes work by outside agencies and utilities in design coordination and review.

CONTINGENCY: A fund established at the beginning of a project to provide for anticipated but unknown additional costs that may arise during the course of the project.

SPECIAL CONDITIONS: Includes utilities relocation, environmental compliance and mitigation, master cooperative agreements, insurance program, artwork, systems integration testing and pre-revenue operations.

APPENDIX
LIST OF ACRONYMS

AFE	Authorization For Expenditure
ATC	Automatic Train Control
CADD	Computer Aided Drafting and Design
CALTRANS	California Department of Transportation
CD	Calendar Day
CM	Construction Manager
CMAQ	Congestion Mitigation Air Quality
CN	Change Notice
CO	Change Order
CNFA	Concurrent Non-FFGA Project Activities
CPM	Critical Path Method
CPUC	California Public Utilities Commission
CR	Camera Ready
CTC	California Transportation Commission
CUD	Contract Unit Description
DB	Design/Build
DBB	Design/Bid/Build
DD	Design Development
DOT	Department of Transportation
DWP	Department of Water and Power
EIR	Environmental Impact Report
EIS	Environmental Impact Statement
EPBM	Earth Pressure Balance Machine
ESP	Eastside LRT Partners
FAR	Federal Acquisition Regulation
FD	Final Design
FEIS	Final Environmental Impact Statement
FEIR	Final Environmental Impact Report
FFGA	Full Funding Grant Agreement
FIS	Financial Information System
FSEIR	Final Supplemental Environmental Impact Report
FSEIS	Final Supplemental Environmental Impact Statement
FTA	Federal Transit Administration
FTE	Full Time Equivalent
GDSR	Geotechnical Design Summary Report
IFB	Invitation for Bid
IPO	Integrated Project Office
JV	Joint Venture
LA	Los Angeles
LABOE	Los Angeles Bureau of Engineering
LACFCD	Los Angeles County Flood Control District
LACMTA	Los Angeles County Metropolitan Transportation Authority
LADOT	Los Angeles Department of Transportation

APPENDIX
LIST OF ACRONYMS (Continued)

LADPW	Los Angeles Department of Public Works
LADWP	Los Angeles Department of Water and Power
LAUSD	Los Angeles Unified School District
LNTP	Limited Notice To Proceed
LONP	Letter Of No Prejudice
LRT	Light Rail Transit
LRTP	Long Range Transportation Plan
LRV	Light Rail Vehicle
MIS	Major Investment Study
MPSR	Monthly Project Status Report
N/A	Not Applicable
NEPA	National Environmental Protection Act
NPDES	National Pollution Discharge Elimination System
NTE	Not to Exceed
NTP	Notice To Proceed
OCIP	Owner-Controlled Insurance Program
P3	Primavera Project Planner® (scheduling software)
PC	Project Control
PE	Preliminary Engineering
PEER	Permit Engineering Evaluation Report
PGL	Pasadena Gold Line
PIP	Project Implementation Plan
PM	Project Manager
PMA	Project Management Assistance
PMIP	Project Management Implementation Plan
PMOC	Project Management Oversight Consultant
PMP	Project Management Plan (manual)
P&P	Policies & Procedures
PR	Project Report
PSR	Project Study Report
QA	Quality Assurance
QAR	Quality Assurance Report
QC	Quality Control
QPSR	Quarterly Project Status Report
RAC	Review Advisory Committee
RAG	Rail Activation Group
RFC	Request For Change
RFP	Request For Proposal
ROD	Record Of Decision
ROD	Revenue Operations Date
ROM	Rough Order of Magnitude

APPENDIX
LIST OF ACRONYMS (Continued)

ROW	Right-Of-Way
SCAQMD	Southern California Air Quality Management District
SCE	Southern California Edison
SCRRA	Southern California Regional Rail Authority
SHA	State Highway Account
SHPO	State Historic Preservation Office
SIT	System Integration Testing
SOV	Schedule Of Value
SOW	Statement Of Work
SP	Special Provision
STIP	State Transportation Improvement Program
STP	Surface Transportation Program
TBD	To Be Determined
TBM	Tunnel Boring Machine
TCRP	Traffic Congestion Relief Program
TPSS	Traction Power Substation
TRACS	Transit Automatic Control System
UFS	Universal Fare System
USDOT	U.S. Department Of Transportation
VE	Value Engineering
WBS	Work Breakdown Structure
WP	Work Package