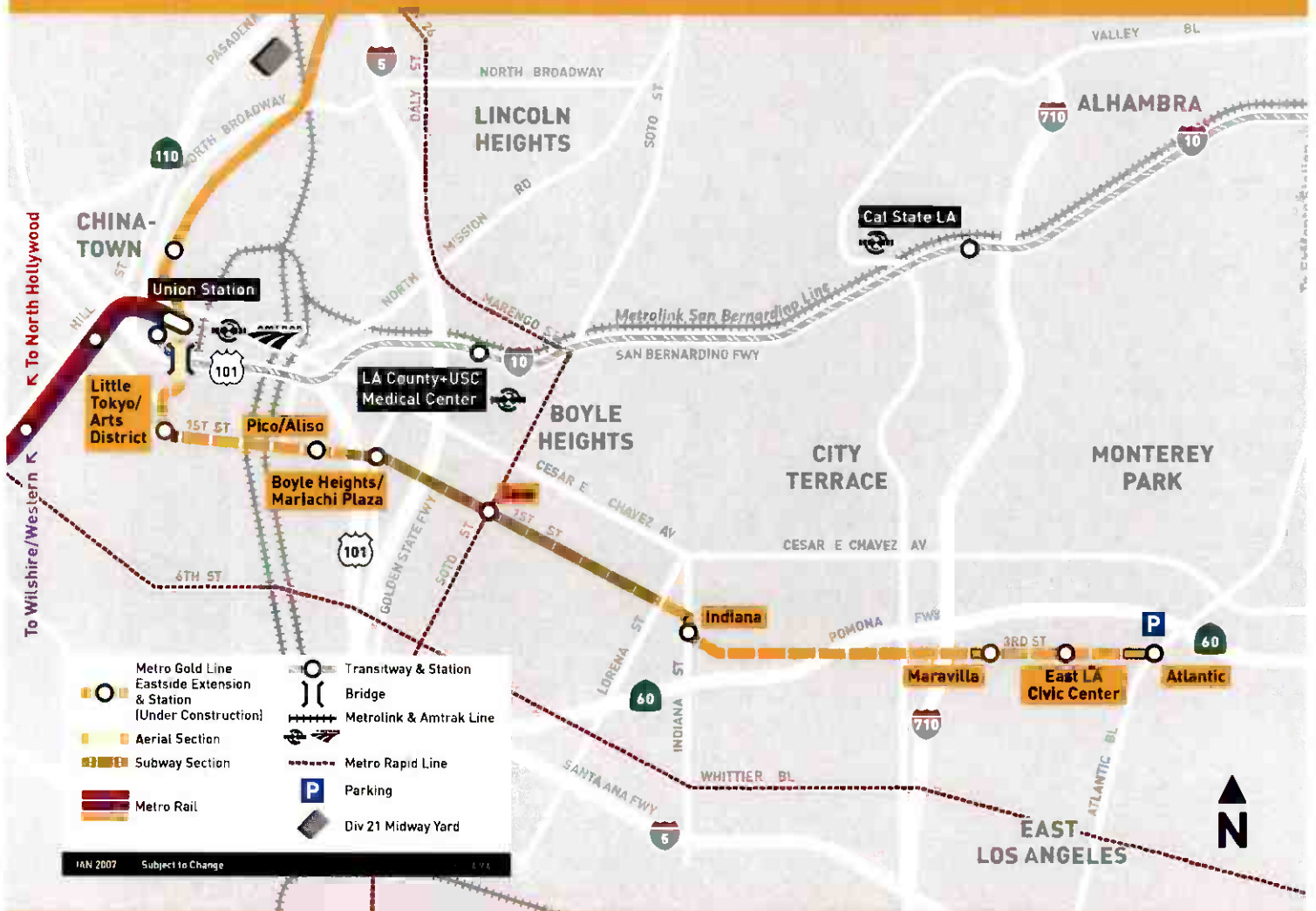


July 2008

Metro Gold Line Eastside Extension



METRO GOLD LINE EASTSIDE EXTENSION

MONTHLY PROJECT STATUS REPORT

THE PREPARATION OF THIS DOCUMENT HAS BEEN FINANCED IN PART THROUGH A GRANT FROM THE U. S. DEPARTMENT OF TRANSPORTATION, FEDERAL TRANSIT ADMINISTRATION (FTA), UNDER THE FEDERAL TRANSIT ACT OF 1964, AS AMENDED, AND FUNDS FROM THE STATE OF CALIFORNIA.

JULY 2008

TABLE OF CONTENTS

	Page No.
Project Overview & Status.....	1-3
Management Issues.....	4
Project Status	
• Project Scope.....	5
• Schedule	
○ Key Milestones Six-Month Lookahead	6
○ Project Master Schedule Critical Path.....	7-11
○ Critical Path Narrative.....	12
• Project Cost Status.....	13-14
• Financial/Grant Status.....	15-16
• Staffing.....	17-19
• Real Estate.....	20
• Environmental.....	21
• Community Relations.....	21
• Quality Assurance.....	22
• Safety.....	22
• Art Development.....	22
• Third Party.....	23-24
• CPUC Crossing.....	25
Contract C0802 Status	26
Contract C0803 Status	27
Contract E700051F Status.....	28
Contract P2550 Status	29
Construction Photographs	30-33
Appendices.....	34-37

PROJECT OVERVIEW & STATUS

The Metro Gold Line Eastside Extension Project is a six-mile, dual track light rail system with eight new stations and one station modification. The system originates at Union Station in downtown Los Angeles, where it connects with the Pasadena Gold Line, traveling generally east to Pomona and Atlantic Boulevards. The system will bridge State Route 101 Freeway and traverse the existing 1st Street Bridge over the Los Angeles River. The system will travel south on Alameda Street and then east on 1st Street with two stations at Alameda and Utah Streets. East of the Los Angeles River and 1st and Utah Streets, the alignment transitions to tunnel for approximately 1.7 miles, and continues beneath 1st Street to underground stations at 1st Street and Boyle Avenue and 1st Street and Soto Street. The alignment returns to the surface near the intersection of 1st Street and Lorena Streets, then jogs to the south, transitioning to follow 3rd Street with stations at Indiana Street, Ford Boulevard, Mednik Avenue and Pomona and Atlantic Boulevards.

In this month's Metro Board meeting, contract award to ARINC for the expansion of the existing SCADA system was authorized. Notice to Proceed is expected by mid-August 2008, which supports the project schedule for Phase II of the Systems Integration Testing. Phase II is Metro's responsibility. The C0803 contractor is finalizing a complete SCADA point's database, which will be provided to ARINC next month.

Underground construction is proceeding per plan. The C0803 contractor is finalizing the rail weld plan, utilizing a specialized method that meets the current approved OSHA regulations for the tunnels. Field crews began securing "J" hooks to the tunnel walls and installing conduit for the 34.5 KV power cable, and continued the FRE conduit installation. Also in the westbound tunnel, installation of the Overhead Catenary System (OCS) hangers and supports began this period. Fabrication of OCS cantilevers and other hardware continued as planned.

At the Boyle Heights/Mariachi Plaza Station, field crews poured the upper entrance walls and the first half of the roof slab. The shoring system for the last entrance roof pour began this period as well as installation of rebar and embeds. Installation of the metal frame for dry wall construction at the mezzanine level also began this period. Fire protection pipe, HVAC duct and cable tray installation at the station entrance mezzanine continued as well as the placement of acoustical finish material at the vent shaft and Emergency Exit No. 1. At the auxiliary power and mechanical rooms, miscellaneous equipment pieces were set on their concrete pads. At the station ancillary switchgear area, equipment items began arriving and were immediately set on their foundation.

At the Soto Station, construction crews poured the Emergency Exit # 2 roof slab and the platform deck this period. Placement interior wall rebar, embeds and forms for the entrance mezzanine interior walls began. Erection of CMU walls at the mezzanine level rooms, placement of acoustical finish material in the mechanical room, and installation of fire protection pipe, HVAC ducts and cable tray in all mezzanine level rooms continue per plan. Also, field crews removed the remaining level 1 struts, placed the roof HDPE protective material and completed backfilling the 1st Street surface in preparation for street reconstruction. At the station Traction Power Substation 2 (TPS-02) site, equipment foundation work was completed this period.

PROJECT OVERVIEW & STATUS

At the East Portal, field crews poured the Emergency Exit # 2 and the portal side structure walls and roof. At the TC&C room, installation of fire protection pipe, HVAC ducts and electrical cable tray continue per plan. At the auxiliary power room, transformer concrete pads were poured and the transformers were placed. Also, the last struts and walers, and the temporary street support deck beams were removed in preparation for backfilling above the East Portal structure. Also, the systems subcontractor began installation of OCS hangers and supports.

At-grade construction is proceeding according to plan. At Union Station, the cast in place concrete wall for ballasted track was poured, backfilling was completed and the first layer of ballast for the track bed was placed. Also, field crews began welding rail in anticipation of track installation.

Along Alameda Street (Segment 1), construction crews completed backfilling of the Mechanically Stabilized Earth (MSE) wall and began installing duct bank. Installation of the curved rail track at Alameda Street and 1st Street continue per plan. Track plinths were formed and poured this period.

Along 1st Street between Vignes Street and the West Portal (Segment 2B), construction of the guideway/track continued per schedule. Field crews poured the westbound track invert slab west of the West Portal and also the protection slab for the track crossover on 1st Street between Clarence and Utah streets. OCS poles were erected by the systems subcontractor north and south of the 1st Street Bridge.

At the TPS-01 site under the 1st Street Bridge, construction crews poured miscellaneous peripheral equipment foundations and began clearing the route that will be used to bring permanent power into the substation.

Guideway construction along 1st Street between Lorena and Indiana Streets in Segment 4A is nearing completion. Field crews installed OCS regulating wire as well as messenger cables. At the TPS-03 site at the intersection of 1st and Lorena Streets, substation equipment was delivered and set on its foundation, and the CMU wall foundation was poured. Also, construction of the guideway south of the Indiana Station (Segment 4B) continued per plan. OCS regulating wire and messenger cables were installed this period as well as Train Control (TC) conduit and couplers.

Construction along 3rd Street in Segment 5, between Ditman and Eastern Avenues, continued according to plan. Field crews completed installation of TC conduit and couplers and began installing track crossover switch machines at the Ditman Street crossing. Also, placement of balance weights on the OCS catenary began this period. The mountable curb along both sides of the median continued per plan. At the TPS-04 site, construction crews completed pulling traction power DC cable and began terminations to the substation equipment.

PROJECT OVERVIEW & STATUS

Between Mednik and Eastern Avenues (Segment 6), guideway construction also continued per plan. Placement of balance weights on the OCS catenary and setting TC impedance bonds completed this period. Construction crews began pulling signal wire between the Maravilla and East Los Angeles Civic Center Stations. Also, the final paving, which is a grind/overlay operation, began at selected intersections and placement of mountable curb on both sides of the median continued.

At the east end of the alignment along 3rd Street between Atlantic Boulevard and Mednik Street (Segment 7), guideway construction is nearing completion. Field crews completed installation of balance weights on the OCS catenary and the switch machines at the Woods Street crossover. The final paving, which is a grind/overlay operation, began between Atlantic Boulevard and Woods Street. Punch list work in this segment continued.

In other areas of the alignment, at-grade station construction continues according to plan. Construction crews continued installation of DC breakers and cable, auxiliary transformers, junction boxes and cabinets inside the TC&C rooms at the Maravilla and East Los Angeles Civic Center Stations. At Atlantic Station, UPS racks and lighting in the TC&C room were completed. Miscellaneous metals and cabinets were installed at Indiana Station TC&C room and steel members for the canopy were erected this period.

The fabrication and delivery of 50 light rail vehicles, Contract No. P2550 continues per the revised plan. Ten vehicles are required for the Metro Gold Line Eastside Extension Project. Fabrication of car assemblies is done at the contractor's plant in Italy and final assembly and testing is done at the contractor's facility in California. To date, a total of thirty-six vehicles have been assembled and of those, seven vehicles are going through the pre-acceptance process before entering the final inspection and commissioning phase. Vehicles will be delivered per the May 2008 revised schedule. Two more vehicles are scheduled for delivery to Metro next period to begin conditional acceptance testing. To date, Metro has conditionally accepted four vehicles, which are running on the operating Metro Gold Line.

The Universal Fare System equipment is in storage at the vendor's facility until the equipment is required for installation. Metro staff has determined that in order to minimize the risk of equipment damage and vandalism, equipment installation will be deferred to the period of Pre-Revenue Operations. The vendor has requested a six to eight week notice prior to equipment delivery.

The Metro Art Department continued providing technical support and coordination between the C0803 contractor and the artists responsible to provide art pieces for the eight stations. The artists continue developing shop drawings and material sampling with multiple fabricators and providing mounting details to the C0803 contractor. Several art pieces have been fabricated and are getting packaged for shipment to the site. Metro and ELRTC are continuing with coordination meetings, where fabrication and installation issues are discussed.

MANAGEMENT ISSUES

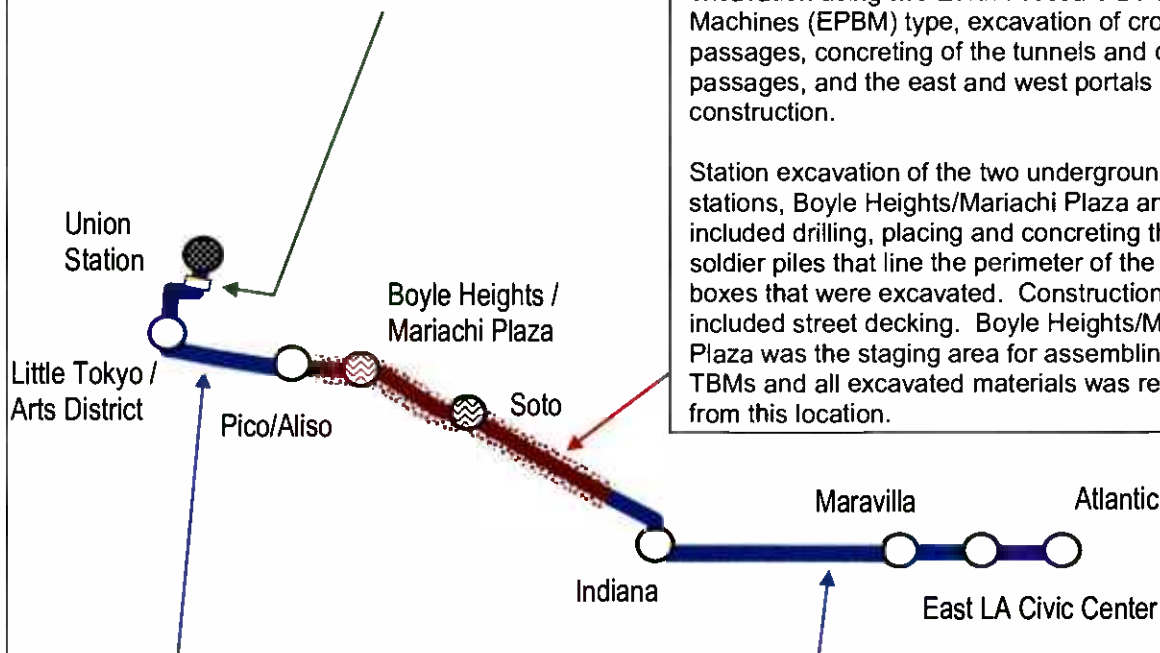
No Management Issues for the period ending July 2008.

PROJECT SCOPE

Contract C0802 – 101 Freeway Bridge Overcrossing: The construction of the bridge was combined with Caltrans freeway improvements project. Caltrans administered the construction and the LACMTA provided oversight and was responsible for the construction costs of the bridge overcrossing.

Contract C0803 - Tunnel and Station Excavation (Design/Bid/Build): Construction of the 1.7 mile tunnel segment included tunnel excavation using two Earth Pressure Balance Machines (EPBM) type, excavation of cross passages, concreting of the tunnels and cross passages, and the east and west portals construction.

Station excavation of the two underground stations, Boyle Heights/Mariachi Plaza and Soto, included drilling, placing and concreting the soldier piles that line the perimeter of the station boxes that were excavated. Construction also included street decking. Boyle Heights/Mariachi Plaza was the staging area for assembling the TBMs and all excavated materials was removed from this location.



Contract C0803 - Stations, Trackwork, and Systems (Design/Build): Construction of the two underground stations includes structural walls, station platforms, mezzanines, station entrances, and plazas, architectural finishes and all related mechanical and electrical work.

Construction of the six-mile alignment includes six at-grade stations, trackwork installation and testing for the entire alignment.

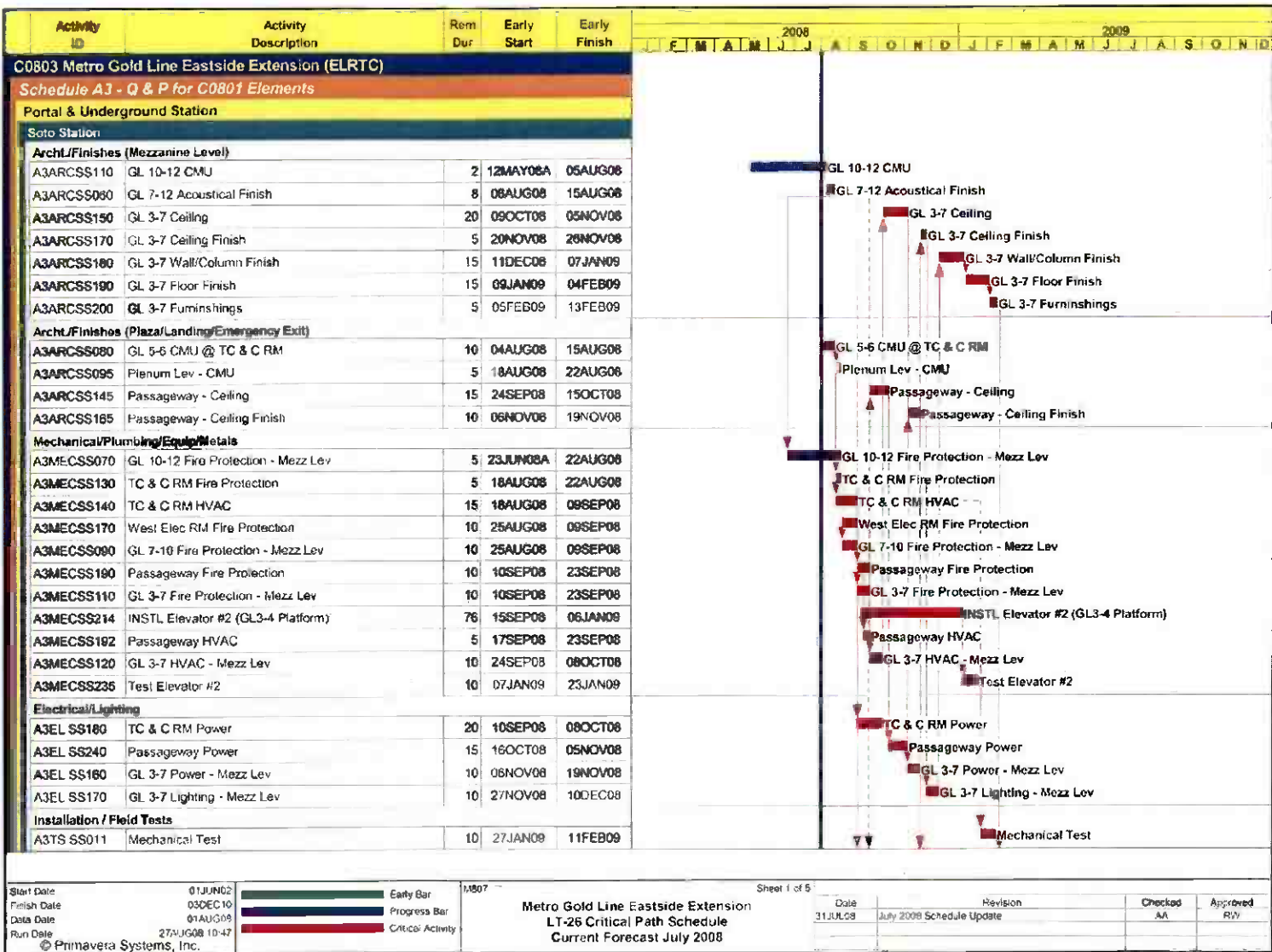
Systems installation and testing is inclusive of power systems, automatic train control, fire and emergency management, TRACS and communications systems. The contractor will be responsible for systems integration testing for the entire line segment prior to pre-revenue operations.

KEY MILESTONE SCHEDULE SIX-MONTH LOOKAHEAD

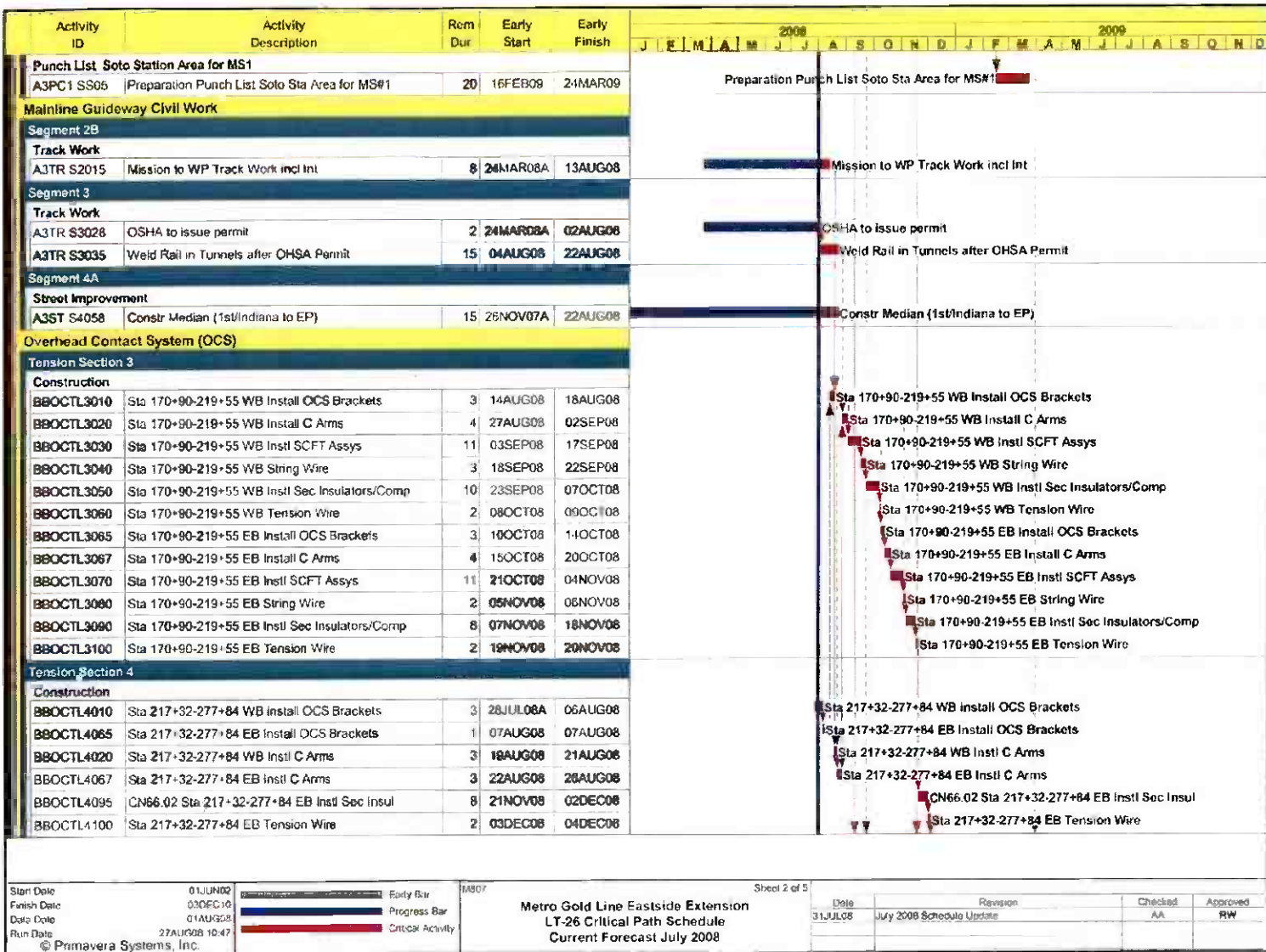
	Milestone Date	Jul-08	Aug-08	Sep-08	Oct-08	Nov-08	Dec-08
Removed Temporary Deck and Completed Street Restoration at Soto Station	07/03/08	○					
Started Installation of the 34.5 KV Power Feeder Cable	07/21/08 *	○					
Completed Construction of the East Portal Structure	07/31/08 *	○					
Complete Civil Guideway Construction - Segment 7 East End of the Alignment	08/05/08 *		○				
Start Installation of Cable Transmission System - Segment 7 East End of the Alignment	08/06/08 *		○				
Complete MSE Wall From Commercial Street to Alameda Street - Segment 1	08/08/08 *		○				
Complete Civil Guideway Construction - Segments 2A and 2B	08/13/08 *		○				
Complete Entrance Structure at Boyle Heights / Mariachi Plaza Station	08/14/08 *		○				
Award SCADA System Upgrade Contract to ARINC	08/15/08 *		◆				
Start Installation of Elevators and Escalators at Underground Stations	08/22/08 *		○				
Start Installation of the Radio System in the Tunnels	08/27/08 *		○				
Complete Civil Guideway & Track Construction in the Tunnels - Segment 3	08/29/08 *		○				
Complete Entrance Structure at Soto Station	08/29/08 *		○				
Begin Delivery of Fans and Dampers for Underground Stations	09/03/08 *			○			
Begin Local Field System Testing - LFAT	09/24/08			○			
Complete Street Improvements Throughout the Alignment	09/26/08 *			○			
Complete Installation of Traction Power Substations	10/21/08 *				○		
Complete At-Grade Stations Canopy Installation	11/26/08 *					○	
Complete Train Control Installation Throughout the Alignment	11/27/08					○	
Complete OCS Installation Throughout the Alignment	12/05/08						○
Complete Installation of Cable Transmission System	12/15/08 *						○
<div> <div>◆ LAC MTA Staff Milestone</div> <div>○ Eastside LRT Constructors</div> <div>FTA</div> <div>FTA Approval</div> <div>△ Other Agencies</div> <div>* New Date</div> <div>M Metro</div> <div>LAC MTA Board Approval</div> </div>							

Six-month lookahead schedule for Contract C0803 reflects the contractor's current CPM schedule.

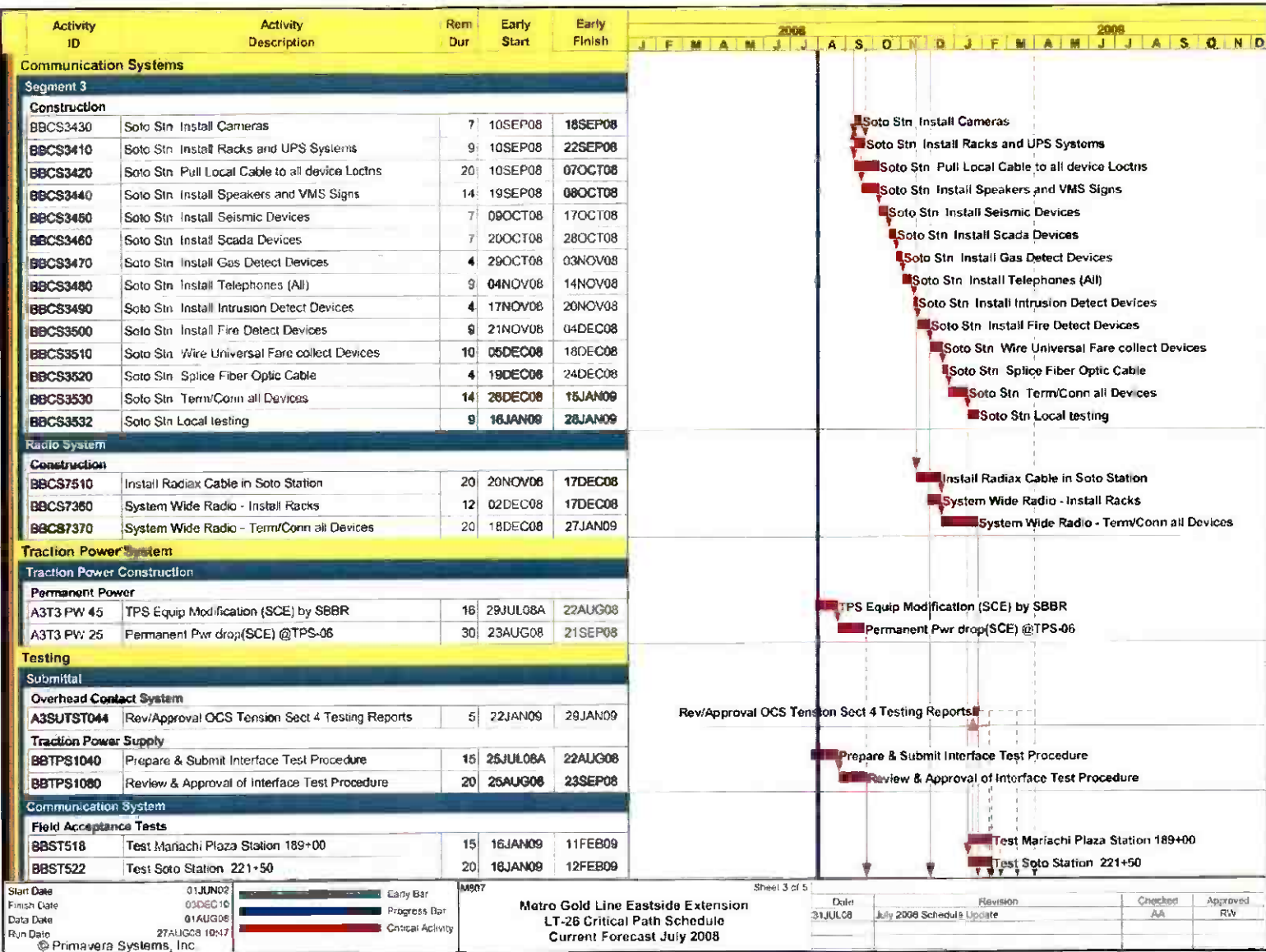
PROJECT MASTER SCHEDULE CRITICAL PATH (1 of 5)



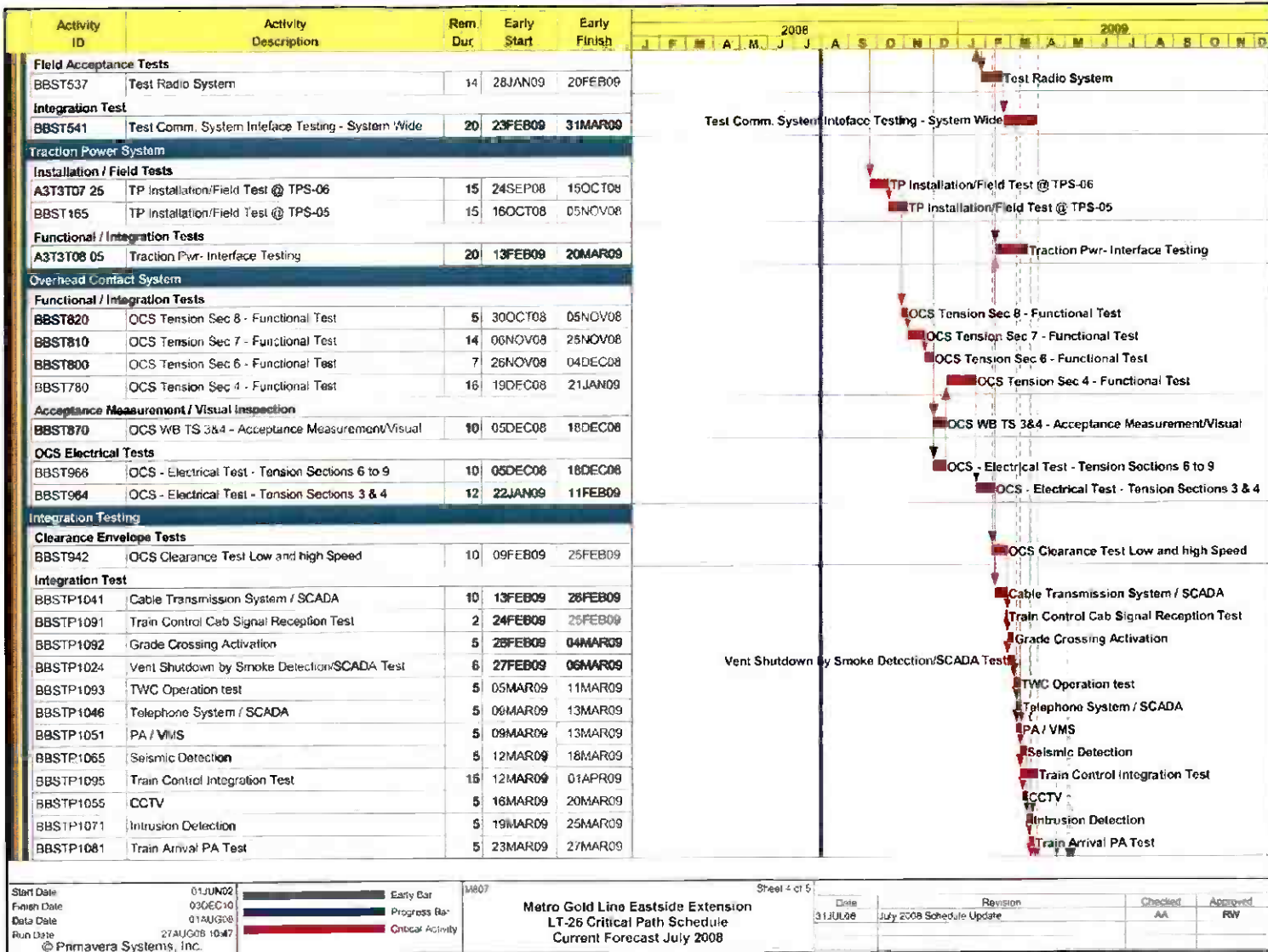
PROJECT MASTER SCHEDULE
CRITICAL PATH (2 of 5)



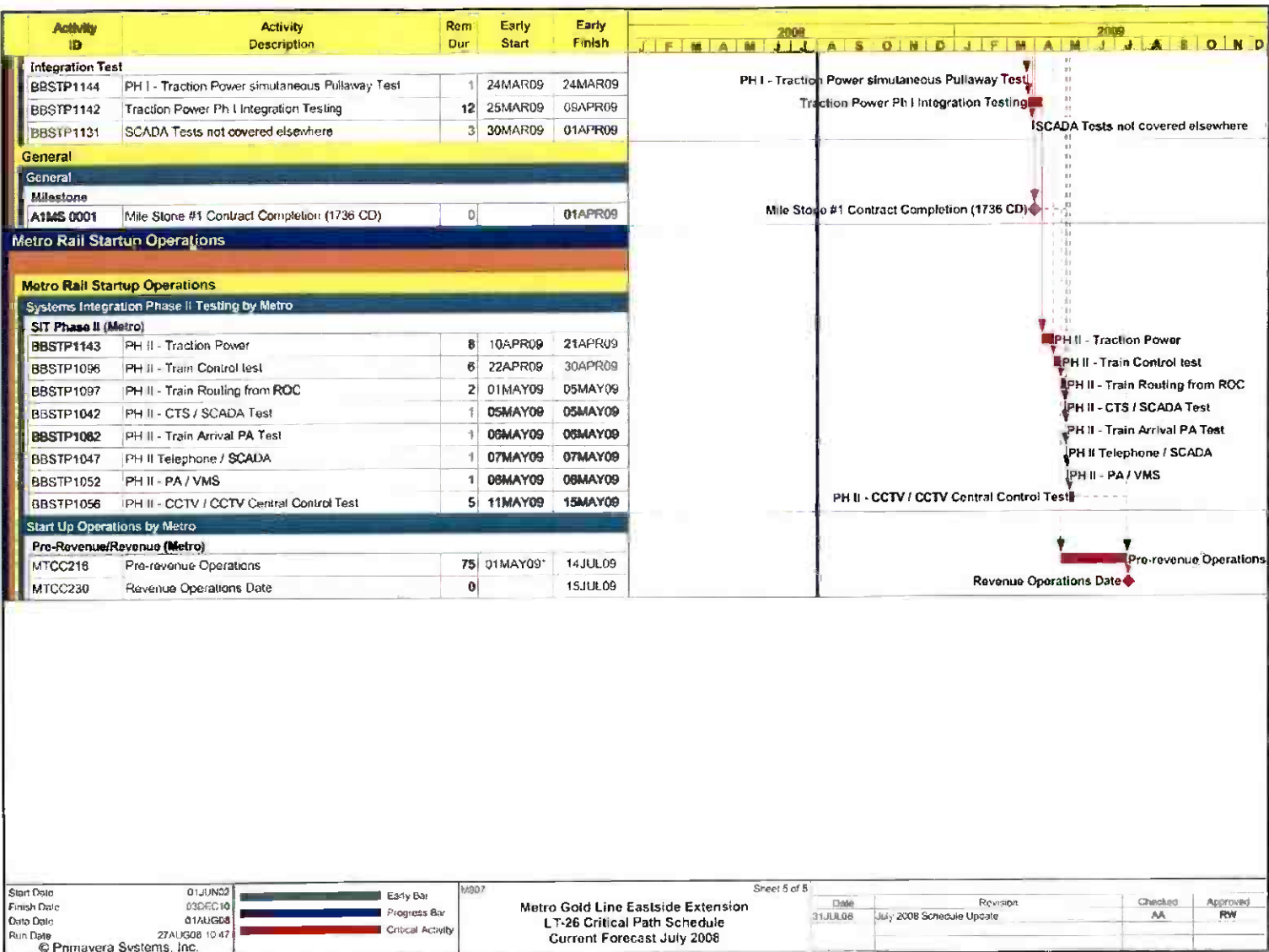
PROJECT MASTER SCHEDULE
CRITICAL PATH (3 of 5)



PROJECT MASTER SCHEDULE
CRITICAL PATH (4 of 5)



PROJECT MASTER SCHEDULE
CRITICAL PATH (5 of 5)



Start Date 01JUN02
Finish Date 03DEC10
Data Date 01AUG08
Run Date 27AUG08 10:47

Early Bar
Progress Bar
Critical Activity

© Primavera Systems, Inc.

1/2007

Metro Gold Line Eastside Extension
LT-26 Critical Path Schedule
Current Forecast July 2008

Sheet 5 of 5

Date	Revision	Checked	Approved
31JUL08	July 2008 Schedule Update	AA	RW

CRITICAL PATH NARRATIVE

Current Critical Path Analysis

The C0803 contractor (ELRTC) is reporting to be on schedule to achieve substantial completion by April 1, 2009. Rail installation in the tunnels is proceeding per plan. ELRTC has retained the services of a rail subcontractor that will make the welds in the tunnels using a specialized method. This method meets OSHA's current regulation. Rail welding is scheduled to complete by the end of August 2008. Track plinth from portal to portal is complete and placement of the FRE conduit in the tunnels is well underway.

There are two parallel critical paths in the current schedule. One is through track and OCS installation from Segment 2B to Segment 4A, which include both tunnels. The other is architectural finishes and communications installation at Soto Station, and installation of communications throughout the alignment. Local facilities testing are the last stage of the critical path prior to entering the final test stage, where Systems Integration Testing and Pre-Revenue Operations are conducted.

PROJECT COST STATUS

COST REPORT BY ELEMENT ORIGINAL SCOPE ACTIVITIES

DOLLARS IN THOUSANDS

ELEMENT	DESCRIPTION	ORIGINAL BUDGET	CURRENT BUDGET		COMMITMENTS		EXPENDITURES		CURRENT FORECAST		BUDGET / FORECAST VARIANCE
			PERIOD	TO DATE	PERIOD	TO DATE	PERIOD	TO DATE	PERIOD	TO DATE	
C	CONSTRUCTION	633,221	-	650,702	1,589	655,318	14,443	537,262	-	650,702	-
S	SPECIAL CONDITIONS	19,494	-	57,032	2,930	47,762	766	34,595	-	57,032	-
R	RIGHT-OF-WAY	40,358	-	37,681	101	38,488	612	38,283	-	37,681	-
P	PROFESSIONAL SERVICES	135,304	-	135,860	12,179	132,436	1,217	116,984	-	135,860	-
PC	PROJECT CONTINGENCY	60,254	-	7,401	-	-	-	-	-	7,401	-
PR	PROJECT REVENUE	(4,617)	-	(4,662)	-	-	-	(44)	-	(4,662)	-
SUBTOTAL		884,014	-	884,014	16,798	874,006	17,038	727,080	-	884,014	-
PF	PROJECT FINANCE COST	14,800	-	14,800	(344)	3,970	(344)	3,970	-	14,800	-
TOTAL		898,814	-	898,814	16,454	877,976	16,694	731,049	-	898,814	-

NOTE: EXPENDITURES ARE CUMULATIVE THROUGH JUNE 2008

PROJECT COST ANALYSIS

Original Budget

The Full Funding Grant Agreement (FFGA) was adopted June 1, 2004 in the amount of \$898.8 million. The Original Budget reflects the adopted FFGA.

Current Budget and Current Forecast

The Current Budget and Forecast remain the same at \$898.8 million.

Commitments

The Commitments increased by \$16.5 million this period due to executed modifications associated with Contract C0803 – Tunnel, Stations, Trackwork, and Systems; FY09 Metro Board approved budgets; and in the Project Finance Cost element there was a decrease of \$0.3 million due to an interest income received. Interest earned is received monthly and interest payments are made semi-annually. Interest earnings are not projected to be more than the interest costs. The 878.0 million in Commitments to date represents 97.7% of the Original Budget.

Expenditures

Expenditures are cumulative through June 2008. The Expenditures increased by a total of \$16.7 million this period. In the Construction element there was an increase of \$14.4 million primarily due to costs associated with Contract C0803 – Tunnel, Stations, Trackwork and Systems. In the Special Conditions element there was an increase of \$0.8 million primarily for costs associated with the 3rd Party Master Cooperative Agreements with the City of Los Angeles and the Dry Utilities Shared Incentive Program. In the Right-of-Way element there was an increase of \$0.6 million for a property acquisition. In the Professional Services element there was an increase of \$1.2 million for costs associated with Metro Project Administration, Design Support During Construction and Construction Management services. And in the Project Finance Cost element there was a decrease of \$0.3 million due to an interest income received. The expenditures for this period are higher than usual due to the posting of both the May and June 2008 invoices for Contract C0803 in the Metro's Financial Information System (FIS). The \$731.0 million in Expenditures to date represents 81.3% of the Original Budget.

PROJECT COST STATUS

COST REPORT BY ELEMENT CONCURRENT NON-FFGA PROJECT ACTIVITIES DOLLARS IN THOUSANDS

ELEMENT	DESCRIPTION	ORIGINAL BUDGET	CURRENT BUDGET		COMMITMENTS		EXPENDITURES		CURRENT FORECAST		BUDGET / FORECAST VARIANCE
			PERIOD	TO DATE	PERIOD	TO DATE	PERIOD	TO DATE	PERIOD	TO DATE	
C	CONSTRUCTION	18,000	-	41,174	-	35,380	1,245	22,118	-	41,174	-
S	SPECIAL CONDITIONS	-	-	2,719	74	2,609	33	1,678	-	2,719	-
R	RIGHT-OF-WAY	-	-	-	-	-	-	-	-	-	-
P	PROFESSIONAL SERVICES	-	-	2,897	957	2,967	166	920	-	2,897	-
PC	PROJECT CONTINGENCY	-	-	-	-	-	-	-	-	-	-
PR	PROJECT REVENUE	-	-	(4,087)	-	(4,684)	-	(279)	-	(4,087)	-
SUBTOTAL		18,000	-	42,703	1,031	36,272	1,444	24,437	-	42,703	-
PF	PROJECT FINANCE COST	-	-	-	-	-	-	-	-	-	-
TOTAL		18,000	-	42,703	1,031	36,272	1,444	24,437	-	42,703	-

NOTE: EXPENDITURES ARE CUMULATIVE THROUGH JUNE 2008

PROJECT COST ANALYSIS

Original Budget

The Metro Board adopted the Original Budget of \$18.0 million on March 24, 2005.

Current Budget and Current Forecast

The Current Budget and Forecast remain the same at \$42.7 million.

Commitments

The Commitments increased by \$1.0 million this period for environmental compliance services and FY09 Metro Board approved budgets. The \$36.3 million in Commitments to date represents 84.9% of the Current Budget.

Expenditures

Expenditures are cumulative through June 2008. The Expenditures increased by \$1.4 million this period primarily for costs associated with the installation and testing of the traction power substations, historic street lighting, Metro Project Administration costs, and Design Support During Construction. The expenditures for this period are higher than usual due to the posting of both the May 2008 and June 2008 invoices for Contract C0803 in the Metro's Financial Information System (FIS). The \$24.4 million in Expenditures to date represents 57.2% of the Current Budget.

**Metro Gold Line Eastside Extension
Monthly Project Status Report**

July 2008

FINANCIAL/GRANT STATUS – ORIGINAL SCOPE ACTIVITIES

JULY 2008		STATUS OF FUNDS BY SOURCE									
SOURCE	(A) ORIGINAL BUDGET	(B) TOTAL FUNDS ANTICIPATED	(C) TOTAL FUNDS AVAILABLE	(D) COMMITMENTS	(D/B)	(E) EXPENDITURES	(E/B)	(F) BILLED TO FUNDING SOURCE	(F/B)		
				\$	%	\$	%	\$	%		
FEDERAL - SECTION 5309 NEW START	\$490.700	\$490.700	\$333.593	\$480.716	98%	\$377.594	77%	(1)	\$359.894	73%	
FED - SECTION 5309 FIXED GUIDEWAY	\$23.100	\$12.000	\$12.000	\$12.000	100%	\$12.000	100%		\$12.000	100%	
FEDERAL - CMAQ	\$10.300	\$10.300	\$10.276	\$10.276	100%	\$10.276	100%		\$10.276	100%	
REGIONAL IMPROVEMENT PROG - FED	\$179.600	\$4.600	\$4.600	\$4.600	100%	\$4.600	100%		\$4.600	100%	
REGIONAL IMP PROG - STATE	\$0.600	\$175.600	\$131.796	\$175.600	100%	\$131.796	75%		\$131.796	75%	
STATE TCRP	\$45.000	\$45.000	\$45.000	\$45.000	100%	\$45.000	100%		\$45.000	100%	
PROP A 35% / PROP C 40%/PROP 25%	\$124.614	\$135.714	\$135.714	\$135.714	100%	\$135.714	100%		\$135.714	100%	
LEASE REVENUES	\$10.100	\$10.100	\$10.100	\$10.100	100%	\$10.100	100%		\$10.100	100%	
ACCRUALS											
SUB-TOTAL	\$884.014	\$884.014	\$683.079	\$874.006	99%	\$727.080	82%		\$709.380	80%	
PROP A / PROP C (INTEREST COST)	\$14.800	\$14.800	\$3.970	\$3.970	27%	\$3.970	27%		\$3.313	22%	
TOTAL	\$898.814	\$898.814	\$687.049	\$877.976	98%	\$731.050	81%		\$712.693	79%	

NOTE: EXPENDITURES ARE CUMULATIVE THROUGH JUNE 2008.

STATUS OF FUNDS ANTICIPATED

FEDERAL SECTION 5309 NEW STARTS: LACMTA has received an appropriation of \$333.6 through FY08. LACMTA submitted a grant application for \$78.4 M in March 2008. The grant was approved on June 17, 2008 and funds are available for drawdown.

RIP-STATE: LACMTA's allocation request of \$43.8 to the CTC was approved in July 2008 contingent of the State Budget approval.

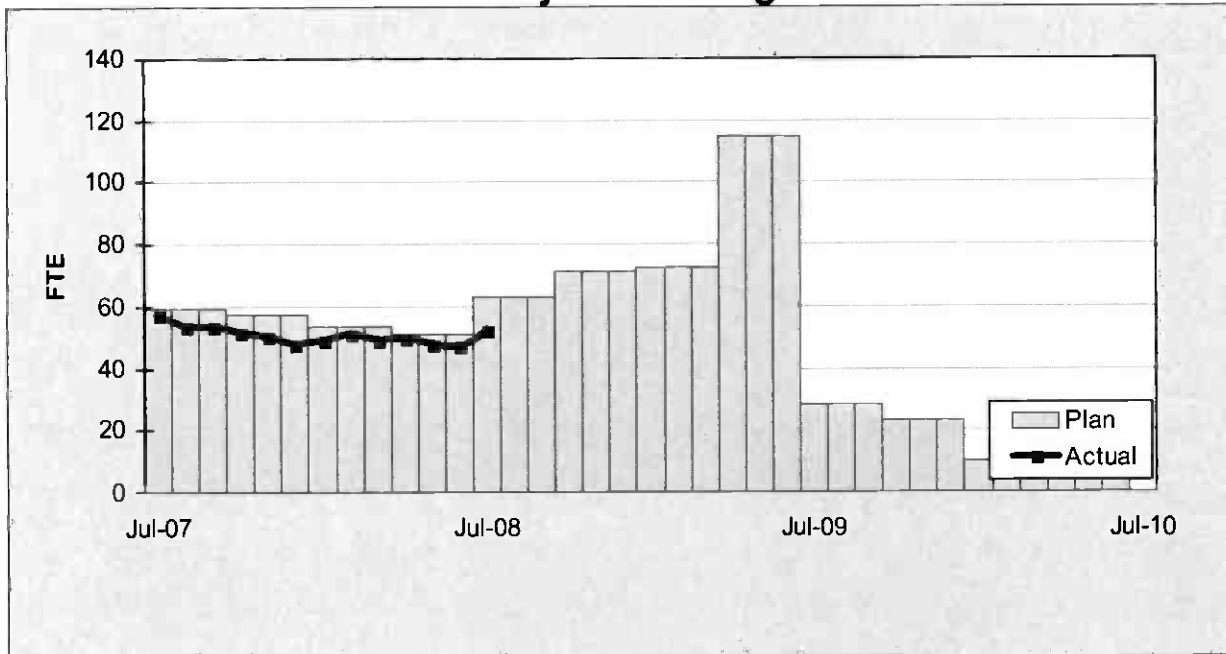
**FINANCIAL/GRANT STATUS
CONCURRENT NON-FFGA PROJECT ACTIVITIES**

JULY 2008		STATUS OF FUNDS BY SOURCE							
SOURCE	(A) APPROVED BUDGET	(B) TOTAL FUNDS ANTICIPATED (1)	(C) TOTAL FUNDS AVAILABLE	(D) COMMITMENTS \$	(D/B) %	(E) EXPENDITURES \$	(E/B) %	(F) BILLED TO FUNDING SOURCE \$	(F/B) %
PROP C 40%	\$14,000	\$14,000	\$14,000	\$14,000	100%	\$7,922	57%	\$5,107	36%
PROP C 10%	\$4,000	\$4,000	\$4,000						
STATE TCR	\$0.000	\$24,086	\$24,086	\$22,272	92%	\$16,515	69%	\$16,515	69%
STATE TSA	\$0.000	\$0.617	\$0,000	\$0,000	0%	\$0,000	0%	\$0,000	0%
TOTAL	\$18,000	\$42,703	\$42,086	\$36,272	85%	\$24,437	57%	\$21,622	51%

NOTE: EXPENDITURES ARE CUMULATIVE THROUGH JUNE 2008.

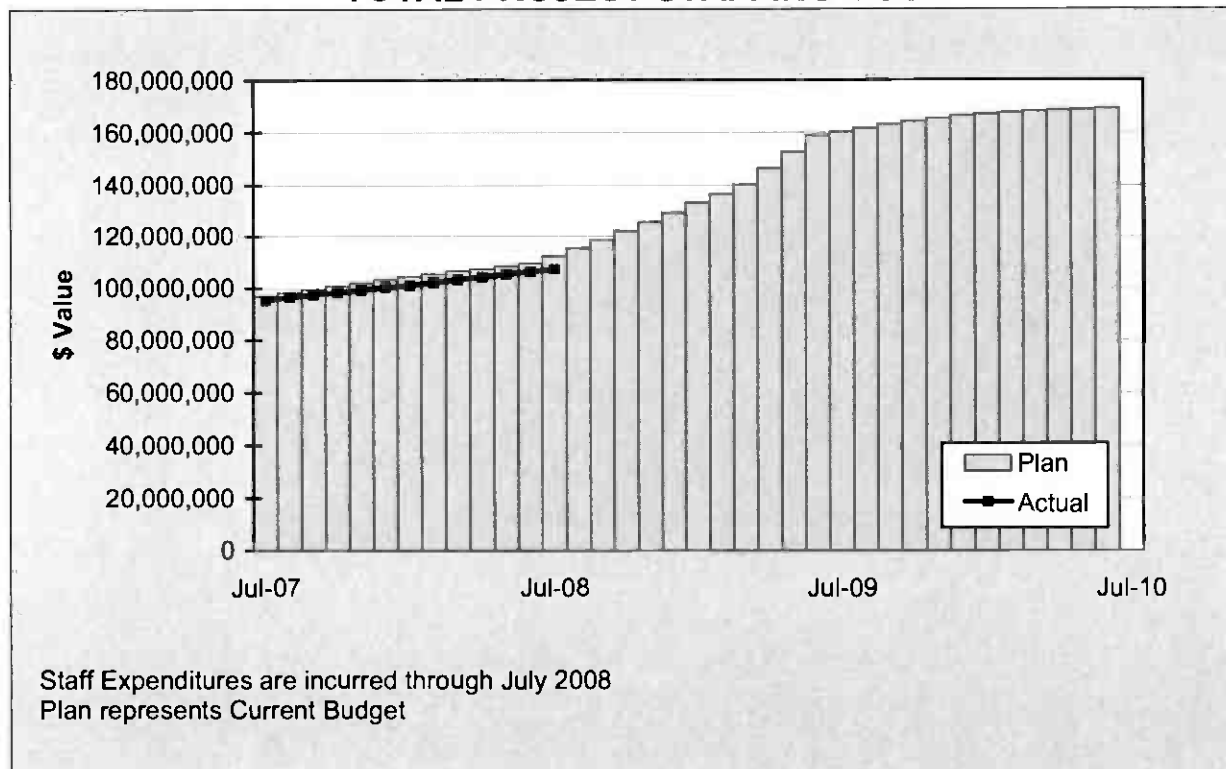
STAFFING STATUS

Total Project Staffing - FTES



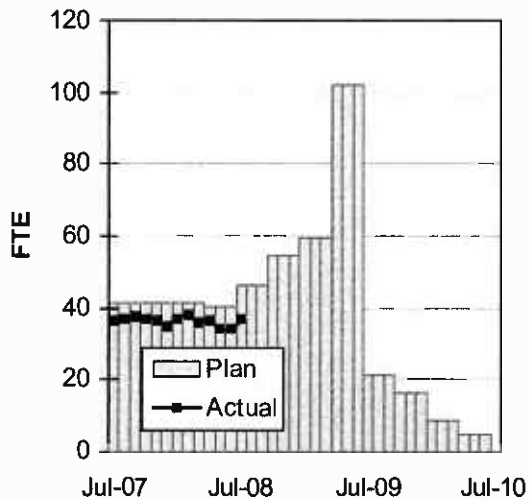
STAFFING STATUS

TOTAL PROJECT STAFFING COST

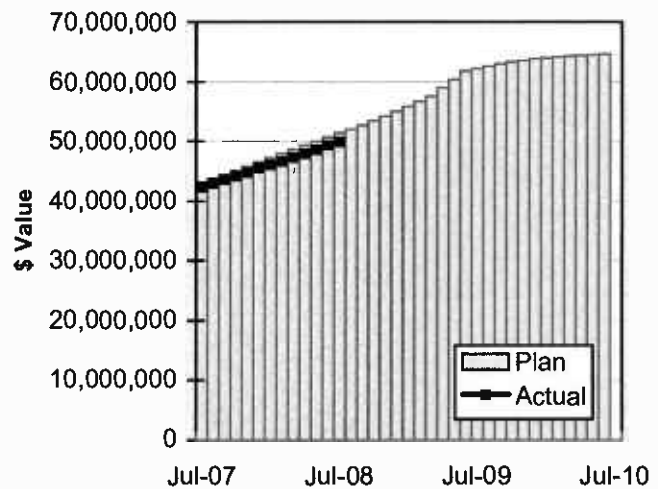


STAFFING STATUS

DIRECT AGENCY - FTES

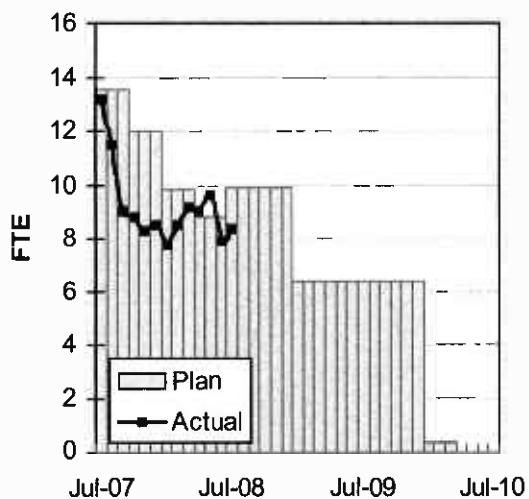


DIRECT AGENCY - COST

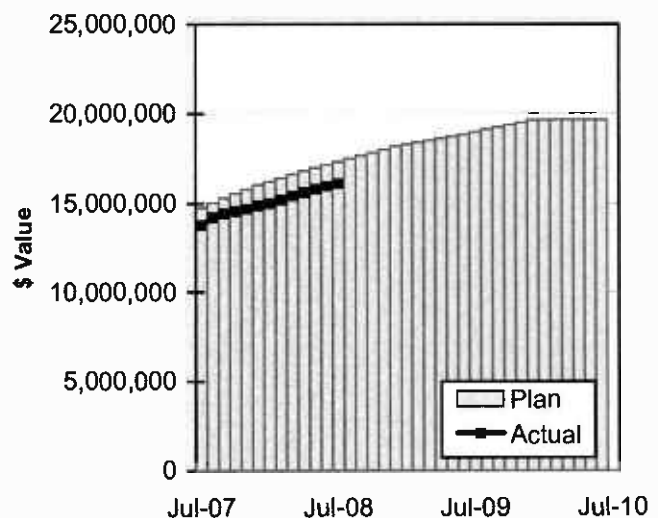


Staff Expenditures are incurred through July 2008.
Plan represents Current Budget

CONSTRUCTION MGMT – FTES



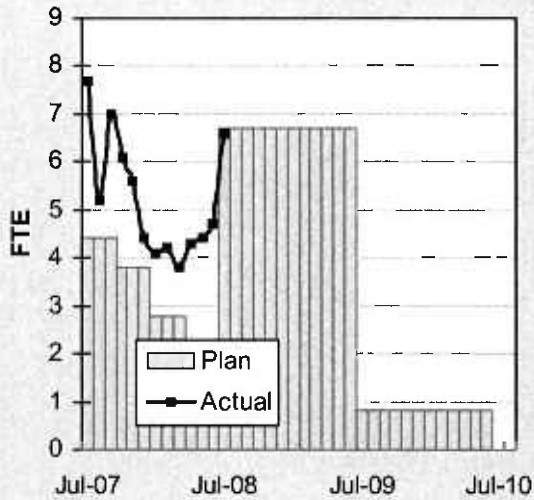
CONSTRUCTION MGMT - COST



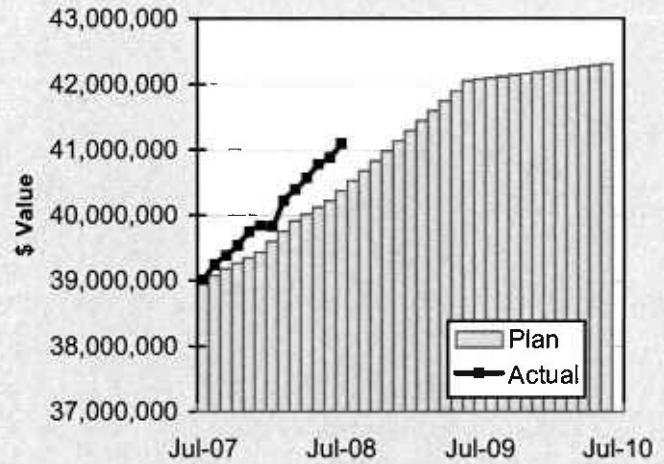
Staff Expenditures are incurred through July 2008.
Plan represents Current Budget

STAFFING STATUS

ELRT PARTNERS - FTES



ELRT PARTNERS - COST



Staff Expenditures are incurred through July 2008.
Plan represents Current Budget

REAL ESTATE STATUS

- For C0803, the tunnel portion of the alignment, 40 parcels were required for acquisition (11 full takes, 4 partial takes, 20 sub-surface easements/temporary construction easements, 3 sub-surface easements/building protection, and 2 building protections).
- For C0803, the at-grade portion of the alignment, 27 parcels were required for acquisition (17 full takes, 9 partial takes and 1 surface easement). Nine parcels were required for the LAUSD Ramona Opportunity High School site reconfiguration.
- For C0802, 2 parcels were required (1 surface easement and 1 full take parcel).
- Two Encroachment Permits were obtained from Caltrans for the C0803-Tunnel. Three street closures were obtained from the City of LA.

REAL ESTATE ACQUISITION SCHEDULE SUMMARY

<i>Number of Parcels</i>	Required	Acquired	On Schedule	Behind Schedule	
				Number	Avg. Calendar Days
This Period	69	69	0	0	0
Last Period	69	69	0	0	0

REAL ESTATE STATUS TO DATE BY CONTRACT ACQUISITION PHASE

CONTRACT NO.	Number of Parcels (A+B+C+D+E)	Agreements Signed (A)	Parcels in Condemnation (B)	Under Negotiation (C)	In Appraisal Process (D)	Inactive Parcels (E)	Parcels Available
C0803-Tunnel	40	40	0	0	0	0	40
C0803-At-Grade	27	27	0	0	0	0	27
C0802	2	2	0	0	0	0	2
TOTAL	69	69	0	0	0	0	69
LAST PERIOD	69	69	0	0	0	0	69

ENVIRONMENTAL STATUS

- Metro will submit DNA samples to the University of Illinois for analysis from the 100 year old human remains discovered at the Los Angeles Crematorium.

COMMUNITY RELATIONS STATUS

- Distributed ten construction notices which reached approximately 31,520 residences/businesses. Activities included deck removal for Phase IV, water distribution line installation, utility work and emergency exit cement pour.
- Met with 131 residents/business owners to coordinate construction activities.
- Delivered two Open During Construction banners and thirty-six banners promoting the Project.
- Held monthly Executive Review Advisory Committee Meeting and Review Advisory Committee Meeting.
- Supported the Boyle Heights and East Los Angeles Chamber of Commerce 20th Anniversary event, Council District 14 Town Hall Meeting and Pueblo del Sol Open House.

QUALITY ASSURANCE STATUS

- Quality Management continues to review contractor's monthly Asphalt, Concrete Compressive Strength and Soils Compaction reports - areas of concern are coordinated to resolution with the onsite lab representative.
- The results of *field surveillance* activities continue to be identified in Weekly Surveillance Reports including color digital pictures identifying sites of surveillance and issues of concern.
- Mainline Ductbank damage caused by follow-on concrete forming work was addressed by the contractor in a nonconformance report. Metro Engineering concurred with the nonconformance report disposition and this issue is closed subject to field surveillance of cable installation.

SAFETY STATUS

- Participated in weekly progress meetings with Construction Managers and ELRTC management personnel to discuss safety related issues and construction schedule.
- Participated in System Activation Meeting and Contractor Readiness Review Critical Lift Meetings.
- Conducted All Hands Safety and Security Meeting with Contractor Safety personnel, LAFD and LAPD.
- Conducted security reviews.
- Monitored construction activities on a daily basis, including weekends, to ensure contractor compliance with Contract Specification.
- ELRTC and their subcontractors reported zero recordable incidents and 104,197 work hours for the month of July 2008. A total of thirty-nine (39) recordable incidents have occurred Project to Date. Total Project to Date work hours are 3,362,907. Injury Rates for Recordable incidents are 2.3; well below the published incident rate of 5.3.

ART DEVELOPMENT STATUS

- Coordination meetings with Metro Construction and ELRTC for artwork fabrication/installation schedules for eight stations.

THIRD PARTY AGREEMENT STATUS

Third Party	Type of Agreement	Forecast Execution Date	Required Need Date	Status/ Comments
City of Los Angeles	Amendment	Completed	N/A	Executed December 2002.
Los Angeles County	Master	Completed	N/A	Executed April 2003.
Caltrans (All Projects)	Master	Completed	N/A	Executed July 2003.
Caltrans (101)	Design	Completed	N/A	Executed July 2003.
Caltrans (101)	Construction	Completed	N/A	Executed September 2003.
Caltrans (101)	Maintenance	12/08	Project Completion	The initial negotiation meeting was held on 1/9/03. LACMTA received a draft from Caltrans on 1/22/04. LACMTA reviewed and submitted the agreement to Caltrans on 2/10/04. A follow up call was made on 10/20/05 but no response to date.
LADWP (Water/Power)	Amendment	8/08	*6/04	LACMTA Management, County Counsel, and LACMTA Board staff have participated in meetings with DWP to complete negotiations, since the "Deadline and Delay" clause is not acceptable to LADWP. Alternative language was forwarded to LACMTA Management and County Counsel for review on 10/7/05. LACMTA CEO is to speak with LADWP CEO.
So. Cal. Edison Co.	Amendment	N/A	N/A	SCE Executive Legal Branch stated on 2/25/05 they have no intention of signing agreement.
The Gas Company	Amendment	Completed	N/A	Executed May 2005.
SBC/AT & T	Amendment	Completed	N/A	Executed May 2005. SBC has been acquired by AT&T and has formed a new corporation TCM for work in Southern California. A new agreement has been negotiated with Metro and TCM, which was approved by the Metro Board in April. The new agreement mirrors the SBC agreement except for some minor changes in the insurance language.
Adelphia Cable Company	Amendment	8/08	*6/04	LACMTA received a draft from Adelphia for review. LACMTA Management and County Counsel reviewed the amendment and returned the document to Adelphia with comments. Adelphia's Legal Department is reviewing the document and follow-up calls were made on 10/20/05 and 11/16/05.
Calif Wtr Service Co	Master	Completed	N/A	Executed May 2005.
L.A. County Sanitation Districts	N/A	N/A	N/A	In a letter dated 3/26/03, the Sanitation District stated that there is not a need for an agreement since there are no relocations related to their facilities. The Sanitation District will review submittals related to encasements of their facilities on Indiana Street.
MCI Worldcom	Amendment	Completed	N/A	Executed May 2005.
Metropolitan Wtr Dist	Amendment	Completed	N/A	Executed May 2003.

THIRD PARTY AGREEMENT STATUS

Third Party	Type of Agreement	Forecast Execution Date	Required Need Date	Status/ Comments
Verizon Wireless	Amendment	8/08	*6/04	The revised draft amendment was hand delivered to Verizon on 11/19/03 and an electronic copy was sent to them 2/19/04. Verizon did respond with comments, which were reflected in a revised agreement sent 4/05. Verizon legal is completing final review. Follow up calls were made on 10/20/05 and 11/16/05. Verizon has now joined MCI and once the legal work is complete in late February 2006, LACMTA may be able to use the MCI Agreement for Verizon work. E-mailed MCI Agreement to Verizon Representative for consideration as overall agreement covering Verizon and MCI as the new Verizon.
GST	N/A			Facilities are not impacted by Eastside Construction
Exxon Mobil Oil Company	N/A			Facilities are not impacted by Eastside Construction
Pacific Pipeline Company	N/A			Facilities are not impacted by Eastside Construction
Kinder Morgan Pipeline Company	N/A			Facilities are not impacted by Eastside Construction
Tosco Refining Company	N/A			Facilities are not impacted by Eastside Construction
Equilon Pipeline Company	N/A			Facilities are not impacted by Eastside Construction
Level 3 Communications	N/A			Facilities are not impacted by Eastside Construction
Broadwing Communications	N/A			Facilities are not impacted by Eastside Construction
Eller Media	N/A			Facilities are not impacted by Eastside Construction

* Work will be performed under the current MCA and will not delay ongoing work.

**Metro Gold Line Eastside Extension
Monthly Project Status Report**

July 2008

CPUC CROSSING SUMMARY

Batch	Application Status	Initial Package Submittal to MTA	Field Diagnostic Meeting	Revised Drawings Due to MTA	Draft Write-up to MTA	Draft Package Sumbittal to PUC Local office and Agencies	Final Package Submittal to PUC	CPUC Final Approval
1	Complete	8/5/02	8/12/02	8/26/02	9/6/02	9/6/02	9/6/2002	Approved
2	Complete	10/4/02	10/11/02	10/25/02	11/6/02	11/22/02	11/22/2002	Approved
3	Complete	2/6/03	2/27/03	3/10/03	1/27/03	4/11/02	4/18/2003	Approved
4	Complete	12/14/02	1/15/03	1/29/03	11/13/02	5/5/03	6/18/2003	Approved
4A	Complete	1/24/03	1/29/03	3/14/03	2/7/03	9/5/03	1/23/2004	Approved
6	Complete	3/19/03	3/26/03	6/20/03	2/7/03	9/5/03	9/12/2003	Approved
7	Complete	12/11/02	12/18/02	3/31/03	2/7/03	5/5/03	7/25/2003	Approved
8	Complete	11/26/02	12/18/02	3/31/03	11/15/02	6/6/03	5/21/2004	Approved
9	Complete	1/20/03	1/29/03	3/31/03	11/22/02	8/29/03	9/12/2003	Approved
10	Complete	12/11/03	12/18/02	3/10/03	11/22/02	5/5/03	8/29/2003	Approved
11	Complete	2/13/03	2/27/03	4/18/03	12/6/02	6/6/03	8/29/2003	Approved
12	Complete	2/13/03	2/27/03	4/18/03	12/13/02	6/6/03	9/5/2003	Approved
13	Complete	2/6/03	2/20/03	4/18/03	2/21/03	6/6/03	9/1/2004	Approved
14	Complete	1/8/03	1/15/03	3/14/03	11/12/02	8/29/03	10/30/2003	Approved
15	Complete	2/26/03	N/A	N/A	2/21/03	6/6/03	8/29/2003	Approved
16	Complete	2/26/03	N/A	N/A	2/28/03	6/6/03	8/29/2003	Approved
17	Complete	1/8/03	1/15/03	N/A	2/14/03	5/5/03	6/13/2003	Approved
18	Complete	1/8/03	1/15/03	3/20/03	2/14/03	5/5/03	6/13/2003	Approved
Agency Responsible		ELRTP	MTA	ELRP	ELRTP	MTA	MTA	

Batch No. 5 has been removed, as the Midway Yard will be utilized.

SHADED AREAS REPRESENTS COMPLETION

All applications are approved.

Batch Descriptions	
1 1st / Alameda	10 3rd / Ford
2 Alameda / Temple	3rd / McDonnell
1st / Hewitt	3rd / Arizona
Ped Crossings @ 1st / Alameda Station	11 3rd / Mednik
3 1st / Vignes	3rd / Civic Center Drive
4 1st / Lorena	3rd / La Verne
4A Indiana/1st	12 3rd / Driveways to Sherriff's Station
Indiana/3rd	3rd / Wood / Via Corona / Pomona / Beverly
Indiana Pedestrian Crossing	13 3rd / 60 Fwy WB Connector
6 1st / Mission	3rd / 60 Fwy over ELRT
1st / Anderson	3rd / 710 Fwy SW Connector
1st / Clarence	3rd / Bridge over 710 Fwy
1st / Utah	3rd / 710 Fwy SE Connector
1st/Gless Pedestrian Crossing	14 Union Station Service Road
7 3rd / Rowan	15 1st / Santa Fe
8 3rd / Gage	1st / Myers
3rd / 60 Fwy WB Ramps	16 1st / MTA
3rd /Downey	1st / BNSF
	1st / Union Pacific

Metro Gold Line Eastside Extension
Monthly Project Status Report

July 2008

CONTRACT C0802 STATUS

Description: 101 Freeway Bridge Overcrossing Contractor: Brutoco Engineering & Construction		Contract No. C0802 Status as of: August 1, 2008					
Progress/Work Completed: * Bridge work was completed in March 2007 * Plant Maintenance period achieved November 2007 Areas of Concern: * None		Major Activities (In Progress): * None Major Activities Next Period: * None					
Schedule Summary: Date of Award: 09/07/04 Notice to Proceed: 09/22/04 Original Contract Duration: 700 CD Current Contract Duration: 775 CD Elapsed Time from NTP: 904 CD * * Note: Elapsed time to Milestone # 1 completion			Original Contract Dates	Time Extension	Current Contract	Forecast	Variance CDs
		Notice to Proceed	09/22/04	0	09/22/04	09/22/04	0
		Milestone 1 - Complete Abutment No. 10	06/26/06	49	08/14/06	03/15/07	-213
		Milestone 2- Complete All Work Without Plant Establishment	08/23/06	75	11/06/06	08/06/07	-273
Physical Percent Complete: Physical completion ** as of this reporting period is: 100.00% ** Note: Physical completion assessment reflects work completed and invoice amount shown in Caltrans Monthly Progress/Expense Report No. 30.		Cost Summary:		\$ In millions			
		1. Award Value:		6.42			
		2. Executed Modifications:		0.00			
		3. Approved Change Orders:		0.00			
		4. Current Contract Value (1+2+3):		6.42			
		5. Incurred Cost:		6.42			

Metro Gold Line Eastside Extension
Monthly Project Status Report

July 2008

CONTRACT C0803 STATUS

Description: Tunnel, Stations, Trackwork & Systems Contractor: Eastside LRT Constructors	Contract No. C0803 Status as of: August 1, 2008																																									
Progress/Work Completed: <ul style="list-style-type: none">* Poured upper exterior entrance walls at Mariachi Plaza Sta. (MPS)* Applied acoustic material at MPS vent shaft and emergency exit # 1* Set MPS Ancilliary Switch Gear equipment on it's foundation* Poured Soto Station (SS) passenger platform deck* Poured SS west partition entrance and emergency exit # 2 roof* Completed backfill and street restoration at Soto Station (SS)* Removed temporary deck support beams at the East Portal* Poured E. Portal roof slab, exit # 2 walls and side structures* Poured CIP wall for ballasted track at Union Station* Completed duct bank installation on US 101 Bridge Overcrossing* Completed Alameda St. MSE wall and started duct bank placement* Erected OCS poles along Segments 2A and 2B* Completed track installation in the tunnels - welding remaining* Set TPS-03 equipment on it's foundation and began CMU wall* Installed OCS wire along Segments 4A and 4B* Install canopy structural members at Indiana Station* Placed train control interlocking devices and switch machines at the Ditman and Woods cross-overs* Installed TC&C room communication and train control cabinets and equipment at Atlantic and East Los Angeles Civic Center stations Areas of Concern: None	Major Activities (In Progress): <ul style="list-style-type: none">* Entrance roof slab at Mariachi Plaza Station* HVAC ducts and cable tray at MPS mezzanine level* Station entrance east partition roof slab at Soto Station* Soto Station interior walls at the entrance mezzanine level* Install mechanical/electrical equipment at both MPS and SS* Segment 1 track south of the US 101 Bridge Overcrossing* String OCS wire and place "C" arms in Segments 2A and 2B* Encase in concrete the FRE conduit in both tunnels* Backfilling and street restoration at the East Portal* Begin underground OCS installation - poles at the East Portal* Communications grounding cable in the tunnels* Pull AC and DC wire at TPS-03 and TPS-05 substations* String OCS regulating and tensioning wire in Segments 4A & 4B* Communication racks at Indiana and Maravilla stations* Train Control equipment installation - Segments 1, 2B and 4A* Fab. underground stations emerg. fans, escalators & elevators Major Activities Next Period: <ul style="list-style-type: none">* Entrance roof slab at Mariachi Plaza and Soto stations* Complete CMU walls at both underground stations* Mechanical and electrical installation-Mariachi Plaza & Soto Sta.* Deliver emergency fans, escalators & elevators at MPS and SS* Ballasted track at Union Station* Complete track installation throughout the alignment* OCS equipment and wire installation-Segments 1, 2A, 2B and 3* TPS-02 and 03 and Ancilliary Switch Gear construction* TC&C rooms equipment installation throughout all stations* Pull Train Control and Communications cable - LA County side* Begin A/G station architectural, mechanical & electrical finishes																																									
Schedule Summary: Date of Award: 06/01/04 Notice to Proceed: 07/01/04 Original Contract Duration: 1795 CD Current Contract Duration: 1800 CD Elapsed Time from NTP: 1493 CD Option D Contract duration 90 CD Complete	<table><tr><td></td><td>Original Contract Dates</td><td>Time Extension</td><td>Current Contract</td><td>Forecast</td><td>Variance CDs</td></tr><tr><td>Notice to Proceed</td><td>07/01/04</td><td>0</td><td>07/01/04</td><td>07/01/04</td><td>0</td></tr><tr><td>Milestone 1 - Contract Completion. Complete all systems integration testing and ready for MTA's pre-revenue operation testing.</td><td>12/31/08</td><td>91</td><td>04/01/09</td><td>04/01/09</td><td>0</td></tr><tr><td>Milestone 3 - Complete Universal Fare System Equipment area.</td><td>04/30/08</td><td>250</td><td>01/05/09</td><td>01/05/09</td><td>0</td></tr><tr><td>Milestone 5 - Vacate all staging areas and turn over to MTA.</td><td>05/30/09</td><td>87</td><td>08/25/09</td><td>08/25/09</td><td>0</td></tr><tr><td>Milestone 6 - Complete design and construction of Option D work.</td><td>09/28/04</td><td>0</td><td>09/28/04</td><td>09/28/04</td><td>0</td></tr></table>							Original Contract Dates	Time Extension	Current Contract	Forecast	Variance CDs	Notice to Proceed	07/01/04	0	07/01/04	07/01/04	0	Milestone 1 - Contract Completion. Complete all systems integration testing and ready for MTA's pre-revenue operation testing.	12/31/08	91	04/01/09	04/01/09	0	Milestone 3 - Complete Universal Fare System Equipment area.	04/30/08	250	01/05/09	01/05/09	0	Milestone 5 - Vacate all staging areas and turn over to MTA.	05/30/09	87	08/25/09	08/25/09	0	Milestone 6 - Complete design and construction of Option D work.	09/28/04	0	09/28/04	09/28/04	0
	Original Contract Dates	Time Extension	Current Contract	Forecast	Variance CDs																																					
Notice to Proceed	07/01/04	0	07/01/04	07/01/04	0																																					
Milestone 1 - Contract Completion. Complete all systems integration testing and ready for MTA's pre-revenue operation testing.	12/31/08	91	04/01/09	04/01/09	0																																					
Milestone 3 - Complete Universal Fare System Equipment area.	04/30/08	250	01/05/09	01/05/09	0																																					
Milestone 5 - Vacate all staging areas and turn over to MTA.	05/30/09	87	08/25/09	08/25/09	0																																					
Milestone 6 - Complete design and construction of Option D work.	09/28/04	0	09/28/04	09/28/04	0																																					
Physical Percent Complete: Physical completion * as of this reporting period is: 83.82% * Note: Physical completion assessment reflects work completed and work in progress.	Cost Summary: <table><tr><td colspan="2">\$ In millions</td></tr><tr><td>1. Award Value:</td><td>600.45</td></tr><tr><td>2. Executed Modifications:</td><td>12.68</td></tr><tr><td>3. Approved Change Orders:</td><td>0.40</td></tr><tr><td>4. Current Contract Value (1+2+3):</td><td>613.52</td></tr><tr><td>5. Incurred Cost:</td><td>527.80</td></tr></table>						\$ In millions		1. Award Value:	600.45	2. Executed Modifications:	12.68	3. Approved Change Orders:	0.40	4. Current Contract Value (1+2+3):	613.52	5. Incurred Cost:	527.80																								
\$ In millions																																										
1. Award Value:	600.45																																									
2. Executed Modifications:	12.68																																									
3. Approved Change Orders:	0.40																																									
4. Current Contract Value (1+2+3):	613.52																																									
5. Incurred Cost:	527.80																																									

**Metro Gold Line Eastside Extension
Monthly Project Status Report**

July 2008

CONTRACT E700051F STATUS

Description: 1st Street Bridge Strengthening Contractor: The Griffith Company		Contract No. E700051F Status as of: August 1, 2008					
Progress/Work Completed: * Bridge turned over to Metro on October 26, 2007 Areas of Concern: * None		Major Activities (In Progress): * None Major Activities Next Period: * None					
Schedule Summary: Date of Award: 01/19/07 Notice to Proceed: 02/06/07 Original Contract Duration: 251 CD Current Contract Duration: 281 CD Elapsed Time from NTP: 281 CD			Original Contract Dates	Time Extension	Current Contract	Forecast	Variance COs
		Notice to Proceed	02/06/07	0	02/06/07	02/06/07	0
		Milestone 1 - Substantial Completion	10/15/07	30	11/14/07	11/14/07	0
Physical Percent Complete: Physical completion as of 11/14/07: 100.00% * * As reported by the City of Los Angeles, Department of Contract Administration		Cost Summary: \$ In millions 1. Award Value: * 4.26 2. Executed Modifications: 0.00 3. Approved Change Orders: 0.05 4. Current Contract Value (1+2+3): 4.31 5. Incurred Cost: 4.31 * City of Los Angeles					

CONTRACT P2550 STATUS

Description: 2550 Rail Vehicle Program Contractor: AnsaldoBreda, Italy (AB)		Contract No. P2550 Status as of: August 1, 2008			
Progress/Work Completed: 1. As of July 15th, vehicle 713 has arrived at MGD L Shop and is undergoing testing for acceptance by MTA. Vehicle 701 was returned to Pittsburgh for upgrade. Vehicle 702 will be returned to Pittsburgh with shipment of car 715 due September 5, 2008. 2. Vehicle final assembly work continues in Pittsburgh, CA. 3. Shipment of foreign and domestic parts for final assembly continue to arrive in Pittsburgh, CA. 4. Vehicle 710 has been accepted on June 13, 2008. Vehicle 711 was accepted on July 15, 2008. 5. Several Engineering meetings with AB have been held to evaluate progress and to close open items, including visits to Pittsburgh Plant and to Pistoia/Naples Italy. 6. Vehicle Nos. 706, 708, 710 and 711 have been in operation on Metro Gold Line since acceptance. 7. Vehicle Nos. 704 and 712 are the next vehicles to be accepted. Areas of Concern: Since Vehicles 706 and 708 have been in revenue service, vehicles have experienced propulsion and low voltage power supply problems. AB Engineers have tested vehicles and interim corrective actions have been implemented. Final hardware and software solution is to be implemented in August 2008.		Major Activities (In Progress): 1. AnsaldoBreda's manufacturing plants in Pistoia and Naples, Italy continue to prepare carshells and subassemblies for shipment to U.S.A. Pittsburgh plant continues vehicle assembly work. 2. Testing of Vehicles 712 & 704 is ongoing in Los Angeles for next vehicle acceptance. 3. A Project Meeting was held in Pistoia, Italy to close open items and address QA/QC concerns. Weekly project meetings will be held to close open items. Major Activities Next Period: 1. Several Technical Progress meetings will be held to emphasize the urgency of resolution of remaining critical items for final acceptance of vehicles. 2. Cars 712 and 704 will continue final testing for Conditional Acceptance in July 2008. Vehicle 713 will be tested for the next acceptance. 3. AB to continue working propulsion and low voltage power supply issues and implement final corrective software and hardware.			
			Quantity	Contract Total Quantity	Balance Due
Schedule Summary: Date of Award: 04/24/03 Notice to Proceed: 06/06/03 Original Contract Duration: 1442 CD Elapsed Time from NTP: 1818 CD Note: Metro and AnsaldoBreda agreed to Mod No. 8 which extended the Options ordering period from April 2008 to October 2008, A schedule of vehicle delivery has been submitted by AB with 50th (last) car delivered by December 2009.		Notice to Proceed 6/6/2003A			
		Vehicles Assembled	36	50	14
		LRV at Commissioning Site - Note 2 Metro	11	50	39
		LRV Accepted for Revenue Service by Note 1 Metro	4	50	46
		LRV in Revenue Service	4	50	46
		Note 1 - Includes Vehicles 706, 708, 710 and 711. Note 2 - Includes Vehicle 714			
Physical Percent Complete: Percent of LRVs assembled = 36/50 = 72% Percent Work Product Invoiced through July 2008 is 51%		Cost Summary: \$ In millions 1. Award Value: Pasadena (Proj. No.: 800151) 126.99 Eastside Ext. (Proj. No.: 800088) 31.75 Total Award Value 158.74 2 Executed Modifications 0.00 3 Approved Change Orders: 0.00 4 Current Contract Value (1 + 2 + 3): 158.74 5 Payments or invoices in process: 80.75			

CONSTRUCTION PHOTOGRAPHS



Rail installation on the US-101 Freeway Bridge LRT Overcrossing.



Removal of temporary street concrete deck panels at the East Portal.

CONSTRUCTION PHOTOGRAPHS



Street restoration work along 1st Street at the East Portal.



City of Los Angeles 1st Street Bridge Widening Project.

CONSTRUCTION PHOTOGRAPHS



Construction of Boyle Heights/Mariachi Plaza Station Entrance.



Completion of 1st Street restoration work at Soto Station.

CONSTRUCTION PHOTOGRAPHS



Installation of the canopy at Indiana Station.

APPENDIX

COST AND BUDGET TERMINOLOGY

ESTIMATED PROJECT COSTS: Estimated project costs are based upon the current project cost estimates that are produced during the engineering design phase.

COMMITMENTS: The total of actual contract awards, executed change orders or amendments, approved work orders of Master Cooperative Agreements, offers accepted for purchase of real estate, and other LACMTA actions that will result in specific expenditures at a future time.

INCURRED COST: The total value of work performed to date of services received, and acquired materials or properties.

EXPENDITURES: The total dollar amount of checks written by the LACMTA's Accounting department for contractor or consultant invoices, third party invoices, staff salaries, and closing payments for escrow accounts that is reported in the LACMTA's Financial Information System (FIS).

CONSTRUCTION: Includes guideways, yards and shops, systems equipment, stations, and vehicles.

PROFESSIONAL SERVICES: Includes general engineering, construction management services, consultant design support services during construction, legal counsel, and agency (LACMTA staff) costs.

RIGHT-OF-WAY: Includes real estate appraisals, purchase cost of parcels, easements, right-of-entry permits, escrow fees, and tenant relocation.

UTILITY/AGENCY FORCE ACCOUNT: Includes work by outside agencies and utilities in design coordination and review.

CONTINGENCY: A fund established at the beginning of a project to provide for anticipated but unknown additional costs that may arise during the course of the project.

SPECIAL CONDITIONS: Includes utilities relocation, environmental compliance and mitigation, master cooperative agreements, insurance program, artwork, systems integration testing and pre-revenue operations.

APPENDIX LIST OF ACRONYMS

AFE	Authorization For Expenditure
ATC	Automatic Train Control
CADD	Computer Aided Drafting and Design
CALTRANS	California Department of Transportation
CD	Calendar Day
CM	Construction Manager
CMAQ	Congestion Mitigation Air Quality
CN	Change Notice
CO	Change Order
CNFPA	Concurrent Non-FFGA Project Activities
CPM	Critical Path Method
CPUC	California Public Utilities Commission
CR	Camera Ready
CTC	California Transportation Commission
CUD	Contract Unit Description
DB	Design/Build
DBB	Design/Bid/Build
DD	Design Development
DOT	Department of Transportation
DWP	Department of Water and Power
EIR	Environmental Impact Report
EIS	Environmental Impact Statement
EPBM	Earth Pressure Balance Machine
ESP	Eastside LRT Partners
FAR	Federal Acquisition Regulation
FD	Final Design
FEIS	Final Environmental Impact Statement
FEIR	Final Environmental Impact Report
FFGA	Full Funding Grant Agreement
FIS	Financial Information System
FSEIR	Final Supplemental Environmental Impact Report
FSEIS	Final Supplemental Environmental Impact Statement
FTA	Federal Transit Administration
FTE	Full Time Equivalent
GDSR	Geotechnical Design Summary Report
IFB	Invitation for Bid
IPO	Integrated Project Office
JV	Joint Venture
LA	Los Angeles
LABOE	Los Angeles Bureau of Engineering
LACFCD	Los Angeles County Flood Control District
LACMTA	Los Angeles County Metropolitan Transportation Authority
LADOT	Los Angeles Department of Transportation

APPENDIX

LIST OF ACRONYMS (Continued)

LADPW	Los Angeles Department of Public Works
LADWP	Los Angeles Department of Water and Power
LAUSD	Los Angeles Unified School District
LNTF	Limited Notice To Proceed
LONP	Letter Of No Prejudice
LRT	Light Rail Transit
LRTP	Long Range Transportation Plan
LRV	Light Rail Vehicle
MIS	Major Investment Study
MPSR	Monthly Project Status Report
N/A	Not Applicable
NEPA	National Environmental Protection Act
NPDES	National Pollution Discharge Elimination System
NTE	Not to Exceed
NTP	Notice To Proceed
OCIP	Owner-Controlled Insurance Program
P3	Primavera Project Planner® (scheduling software)
PC	Project Control
PE	Preliminary Engineering
PEER	Permit Engineering Evaluation Report
PGL	Pasadena Gold Line
PIP	Project Implementation Plan
PM	Project Manager
PMA	Project Management Assistance
PMIP	Project Management Implementation Plan
PMOC	Project Management Oversight Consultant
PMP	Project Management Plan (manual)
P&P	Policies & Procedures
PR	Project Report
PSR	Project Study Report
QA	Quality Assurance
QAR	Quality Assurance Report
QC	Quality Control
QPSR	Quarterly Project Status Report
RAC	Review Advisory Committee
RAG	Rail Activation Group
RFC	Request For Change
RFP	Request For Proposal
ROD	Record Of Decision
ROD	Revenue Operations Date
ROM	Rough Order of Magnitude

APPENDIX
LIST OF ACRONYMS (Continued)

ROW	Right-Of-Way
SCAQMD	Southern California Air Quality Management District
SCE	Southern California Edison
SCRRA	Southern California Regional Rail Authority
SHA	State Highway Account
SHPO	State Historic Preservation Office
SIT	System Integration Testing
SOV	Schedule Of Value
SOW	Statement Of Work
SP	Special Provision
STIP	State Transportation Improvement Program
STP	Surface Transportation Program
TBD	To Be Determined
TBM	Tunnel Boring Machine
TCRP	Traffic Congestion Relief Program
TPSS	Traction Power Substation
TRACS	Transit Automatic Control System
UFS	Universal Fare System
USDOT	U.S. Department Of Transportation
VE	Value Engineering
WBS	Work Breakdown Structure
WP	Work Package