

Metro Gold Line Eastside Extension



METRO GOLD LINE EASTSIDE EXTENSION

MONTHLY PROJECT STATUS REPORT

THE PREPARATION OF THIS DOCUMENT HAS BEEN FINANCED IN PART THROUGH A GRANT FROM THE U. S. DEPARTMENT OF TRANSPORTATION, FEDERAL TRANSIT ADMINISTRATION (FTA), UNDER THE FEDERAL TRANSIT ACT OF 1964, AS AMENDED, AND FUNDS FROM THE STATE OF CALIFORNIA.

OCTOBER 2008

TABLE OF CONTENTS

	Page No.
Project Overview & Status.....	1-4
Management Issues.....	4
Project Status	
• Project Scope.....	5
• Schedule	
○ Key Milestones Six-Month Lookahead	6
○ Project Master Schedule Critical Path.....	7-10
○ Critical Path Narrative.....	11
• Project Cost Status.....	12-13
• Financial/Grant Status.....	14-15
• Staffing.....	16-18
• Real Estate.....	19
• Environmental.....	20
• Community Relations.....	20
• Quality Assurance.....	21
• Safety.....	21
• Art Development.....	21
• Third Party.....	22-23
• CPUC Crossing.....	24
Contract C0802 Status	25
Contract C0803 Status	26
Contract E700051F Status.....	27
Contract P2550 Status	28
Construction Photographs	29-31
Appendices.....	32-35

PROJECT OVERVIEW & STATUS

The Metro Gold Line Eastside Extension Project is a six-mile, dual track light rail system with eight new stations and one station modification. The system originates at Union Station in downtown Los Angeles, where it connects with the Pasadena Gold Line, traveling generally east to Pomona and Atlantic Boulevards. The system will bridge State Route 101 Freeway and traverse the existing 1st Street Bridge over the Los Angeles River. The system will travel south on Alameda Street and then east on 1st Street with two stations at Alameda and Utah Streets. East of the Los Angeles River and 1st and Utah Streets, the alignment transitions to tunnel for approximately 1.7 miles, and continues beneath 1st Street to underground stations at 1st Street and Boyle Avenue and 1st Street and Soto Street. The alignment returns to the surface near the intersection of 1st Street and Lorena Streets, then jogs to the south, transitioning to follow 3rd Street with stations at Indiana Street, Ford Boulevard, Mednik Avenue and Pomona and Atlantic Boulevards.

Metro's consultant, ARINC, continued the software design phase for the expansion of the existing SCADA system this period. The software implementation phase will commence early in 2009 and is expected to be fully operational in time to support the project schedule for Phase II Systems Integration Testing. Phase II is Metro's responsibility. ARINC submitted a baseline schedule, which meets the project's schedule. The database for the SCADA points was submitted by the C0803 contractor and forwarded to ARINC this period.

Underground construction is proceeding per plan. The C0803 contractor began preparations for rail flaw detection and rail grinding. The systems subcontractor completed installation of OCS tunnel assemblies and OCS messenger wire in both tunnels and began pulling contact wire in the westbound tunnel. Also, placement of Train Control (TC) impedance bonds within both tunnels and installation of lighting wire and power cable to the cross passages began this period. Equipment deliveries for the cross passages are continuing.

At the Boyle Heights/Mariachi Plaza Station, field crews poured stair # 3 and vent shaft # 3 roof and stairs # 1 and 2. Assembly of escalators # 3 and 4 were completed and installation began this period. Exposed conduit and lighting installation was completed in the Train Control and Communication (TC&C), emergency fans and auxiliary power rooms. Radiax cable installation in the station continued this period, as well as installation of ceiling grid and panels at the platform and mezzanine levels. Acoustical material was sprayed in the emergency fans rooms and tile installation began for the walls at the mezzanine level. Mechanical and electrical equipment deliveries continued, as well as elevator frames fabrication. Construction crews continued installing drains, rebar and forms for pedestrian walkways around the Mariachi Plaza Kiosk. The first walkway section was poured this period. At the Auxiliary Switch Gear Substation (ASGS) site, placement of wall blocks for the CMU wall continued and the last piece of equipment was set on its foundation.

At the Soto Station, construction crews poured stair # 2 (mezzanine to platform), the mechanical room central roof and the emergency stair # 8 roof slab. The placement of platform and mezzanine level ceiling supports was completed this period and installation of the ceiling grid and panels continued per schedule. Exposed conduit and lighting installation in the TC&C, emergency fans and auxiliary power rooms began and installation of fire protection pipe, HVAC ducts and cable tray at the TC&C, emergency fans and auxiliary power rooms continued. TC cabinets, Uninterruptable Power Supply (UPS) racks and batteries were delivered to the station.

PROJECT OVERVIEW & STATUS

Escalator/elevator supplier crews began assembly of escalators # 2 and 3 off site. Acoustical spray activities through the station were completed. Also, at the Traction Power Substation 2 (TPS-02) site the CMU wall footing foundation was poured and wall block placement began.

At the West Portal (WP), field crews continued installation of OCS support beams, hangers and cantilevers. At the East Portal (EP), field crews continued installation of fire protection pipe, HVAC ducts and electrical cable tray at the TC&C, mechanical and auxiliary power rooms. TC cabinets, gas detection equipment and transformers were delivered to the site and lowered to the portal rooms.

At-grade construction is proceeding according to plan. At Union Station (US), field crews installed the rail switch on the ballasted track bed, installed TC signals, placed OCS poles and began installing the iron picket fence around the Baggage Handling Road. OCS poles were erected along the 101 Freeway Bridge Overcrossing. TC signal cable installation from US to the WP continued this period, as well as installation of TC impedance bonds.

Along Alameda Street (Segment 1), construction crews completed the rail switch on the ballasted track bed and erected OCS poles and cantilevers. Along 1st Street between Vignes Street and the West Portal (Segment 2B), field crews completed installing OCS cantilevers and supports and continued stringing messenger and contact wire. At the TPS-01 site under the 1st Street Bridge, ELRTC crews poured equipment foundations and set a transformer on its foundation.

Guideway construction along 1st Street between Lorena and Indiana Streets in Segment 4A is nearing completion. Field crews completed installing OCS regulating and contact wire, TC impedance bonds, train signals and flashers. The 34.5KV cable was pulled from the TPS-03 substation and connected to the overhead catenary. Rail grinding was performed in this segment. Street restoration at the intersection of 1st and Lorena Streets continued per plan. Stamped concrete crosswalks were poured on the remaining two quadrants of the intersection. At the TPS-03 site, at the intersection of 1st and Lorena Streets, installation of the iron picket fence on top of the CMU wall was completed this period. Also, sidewalk construction and historic light pole erection on the east side of Indiana Street (Segment 4B) was completed.

Construction along 3rd Street in Segment 5, between Ditman and Eastern Avenues, is also nearing completion. Field crews poured the remaining sections of mountable curb along the guideway and began installation of pedestrian handrails. Communication wire between the Maravilla and Indiana Stations was pulled and TC signals and signs were installed at selected intersections. Final paving (grind/overlay) along 3rd Street continued per plan.

Between Mednik and Eastern Avenues (Segment 6), construction is also nearing completion. Construction crews pulled the 34.5KV cable from the TPS-05 substation and connected it on the overhead catenary. Rail grinding was performed in this segment this period. Final street paving and traffic signal installation continues per schedule.

PROJECT OVERVIEW & STATUS

The remaining sections of mountable curb along the guideway were poured and installation of pedestrian handrails began. Final punch list work started. At the TPS-05 site, field crews began preliminary commissioning testing.

At the east end of the alignment along 3rd Street, between Atlantic Boulevard and Mednik Street (Segment 7), guideway and street construction has been completed. Field crews installed traffic signals in the final configuration at selected intersections, placed final pavement (grind/overlay) and installed remaining mountable curbs sections at the edge of the guideway. Rail grinding was performed in this segment this period. Final punch list work is progressing.

At the TPS-06 site, on the northwest corner of Atlantic and Pomona Boulevards, the systems subcontractor continued working on the Southern California Edison punch list prior to energization of the substation.

In other areas of the alignment, at-grade station construction continues according to plan. At the Little Tokyo/Arts District and Pico/Aliso Stations, construction crews pulled train control signal and communications cable, and began attaching it to cable trays in the TC&C room. The room lighting was installed, as well as the UPS racks and batteries. The canopy frame installation continued per plan at both stations. At the Indiana Station, the platform architectural colored concrete topping slab placement began, as well as priming the canopy frames before painting. Also, train signs and signals at both ends of the station were erected this period. At the Park & Ride Lot, light poles were erected and fencing was completed. At the Maravilla Station, platform light poles were erected and wiring for speakers, cameras and signs was pulled throughout the station. Wiring for speakers, cameras and signs was pulled throughout the ELACC and Atlantic Stations.

The fabrication and delivery of 50 light rail vehicles, Contract No. P2550 continues per the revised plan. Ten vehicles are required for the Metro Gold Line Eastside Extension Project. Fabrication of car assemblies is done at the contractor's plant in Italy and final assembly and testing is done at the contractor's facility in California. To date, a total of thirty-nine vehicles have been assembled and of those, seven vehicles are going through the pre-acceptance process before entering the final inspection and commissioning phase. Two more vehicles are scheduled for delivery to Metro next period to begin conditional acceptance testing. As of October 2008, Metro has conditionally accepted eight vehicles, which are running on the operating Metro Pasadena Gold Line.

The Universal Fare System equipment is in storage at the vendor's facility until the equipment is required for installation. Metro staff has determined that in order to minimize the risk of equipment damage and vandalism, equipment installation will be deferred to the period of Pre-Revenue Operations. The vendor has requested a six to eight week notice prior to equipment delivery.

PROJECT OVERVIEW & STATUS

The Metro Art Department continued providing technical support and coordination between the C0803 contractor and the artists responsible to provide art pieces for the eight stations. The artists continue developing shop drawings and material sampling with multiple fabricators and providing mounting details to the C0803 contractor. Fabrication of art pieces is well under way and shipments to the site of completed pieces continued per schedule. Metro and ELRTC are continuing with coordination meetings, where fabrication and installation issues are discussed.

MANAGEMENT ISSUES

No Management Issues for the period ending October 2008.

PROJECT SCOPE

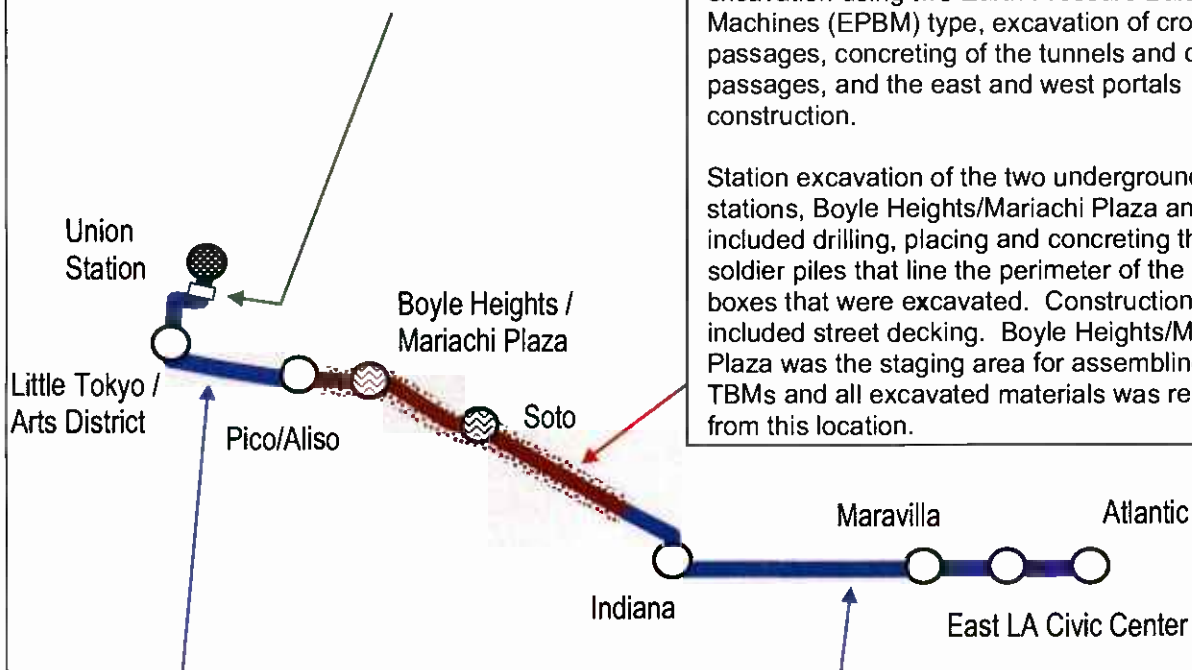
Contract C0802 – 101 Freeway Bridge

Overcrossing: The construction of the bridge was combined with Caltrans freeway improvements project. Caltrans administered the construction and the LACMTA provided oversight and was responsible for the construction costs of the bridge overcrossing.

Contract C0803 - Tunnel and Station

Excavation (Design/Bid/Build): Construction of the 1.7 mile tunnel segment included tunnel excavation using two Earth Pressure Balance Machines (EPBM) type, excavation of cross passages, concreting of the tunnels and cross passages, and the east and west portals construction.

Station excavation of the two underground stations, Boyle Heights/Mariachi Plaza and Soto, included drilling, placing and concreting the soldier piles that line the perimeter of the station boxes that were excavated. Construction also included street decking. Boyle Heights/Mariachi Plaza was the staging area for assembling the TBMs and all excavated materials was removed from this location.



Contract C0803 - Stations, Trackwork, and Systems (Design/Build): Construction of the two underground stations includes structural walls, station platforms, mezzanines, station entrances, and plazas, architectural finishes and all related mechanical and electrical work.

Construction of the six-mile alignment includes six at-grade stations, trackwork installation and testing for the entire alignment.

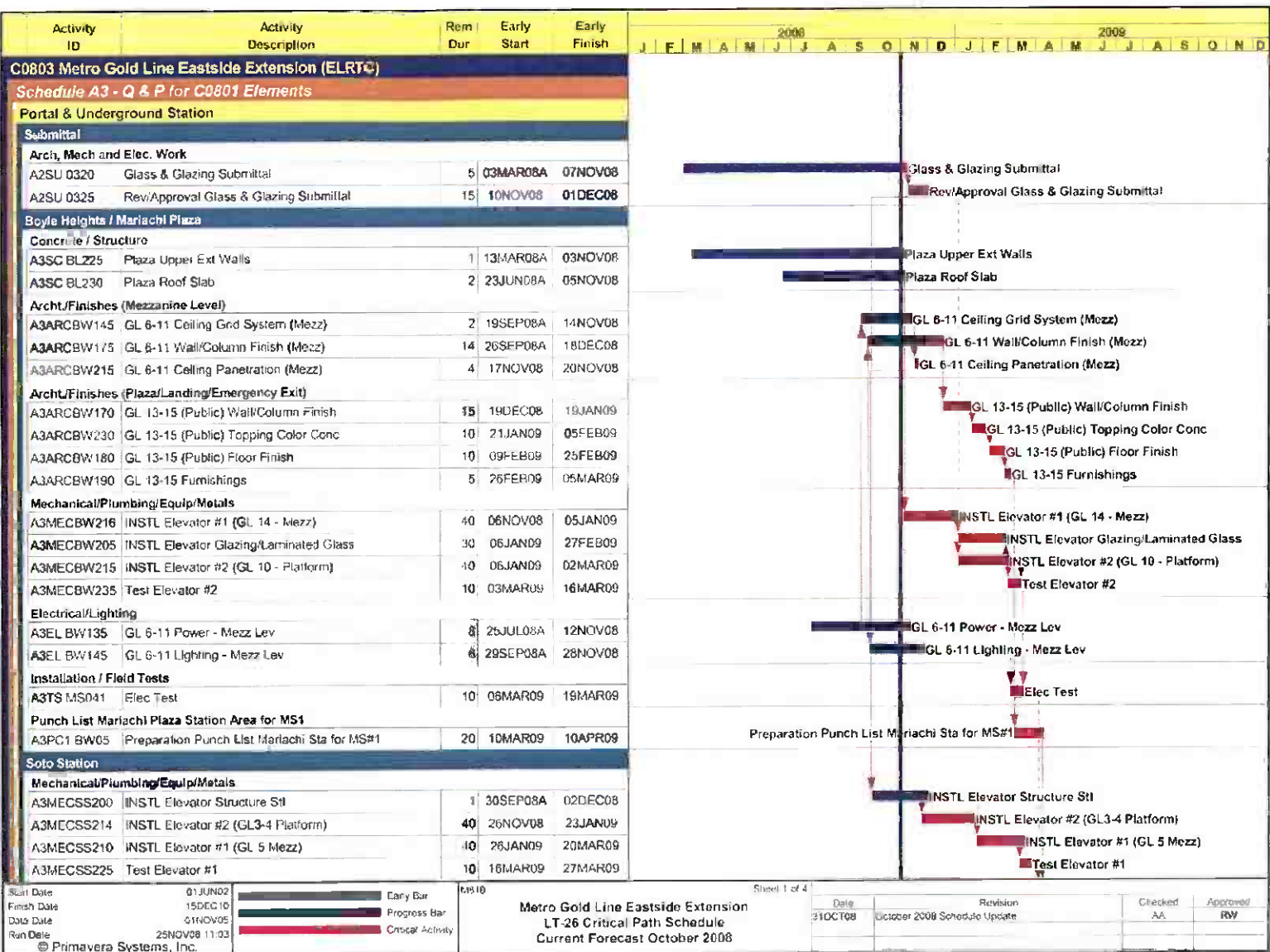
Systems installation and testing is inclusive of power systems, automatic train control, fire and emergency management, TRACS and communications systems. The contractor will be responsible for systems integration testing for the entire line segment prior to pre-revenue operations.

KEY MILESTONE SCHEDULE SIX-MONTH LOOKAHEAD

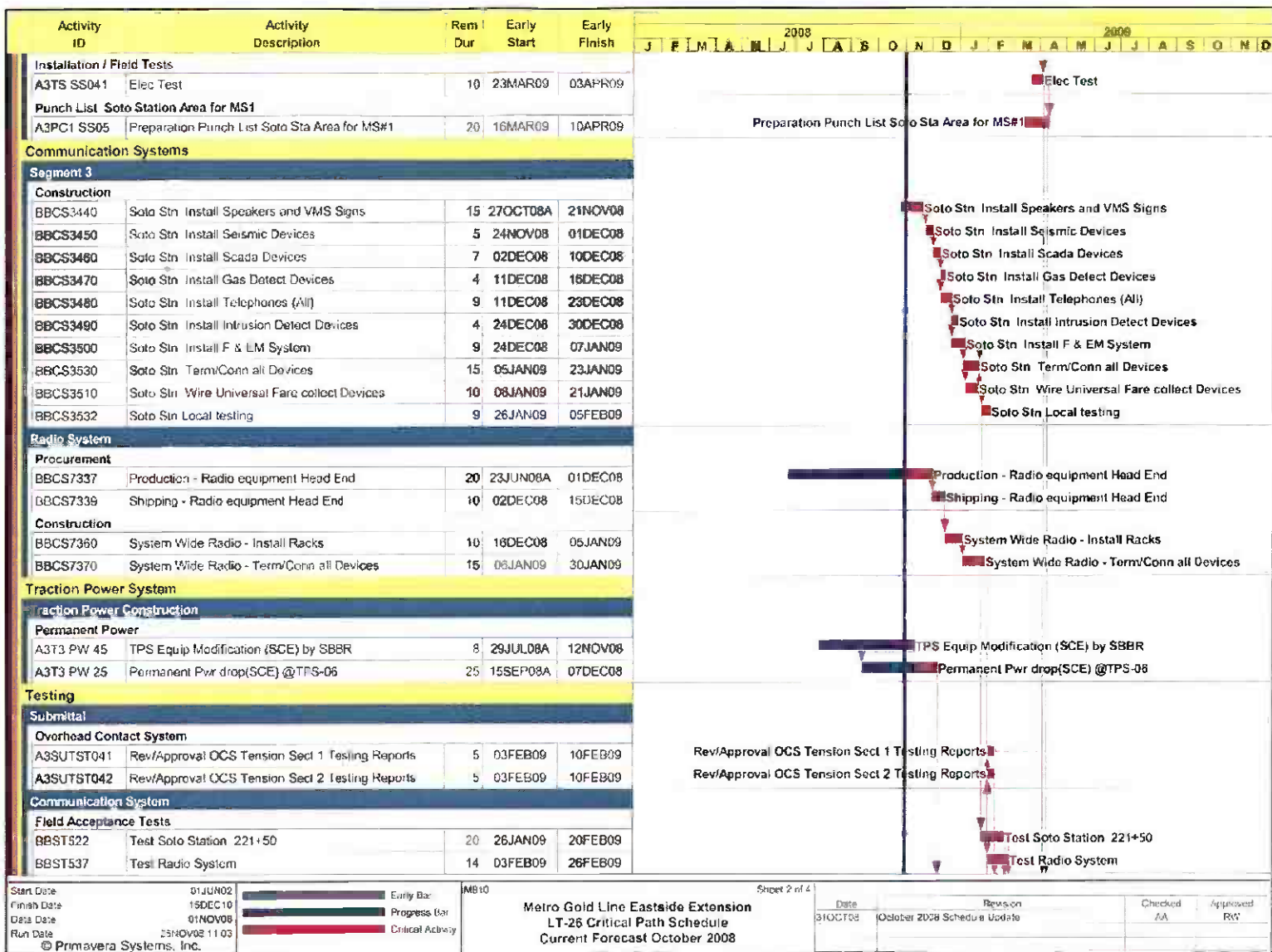
	Milestone Date	Oct-08	Nov-08	Dec-08	Jan-09	Feb-09	Mar-09
Started Installation of Elevators and Escalators at Underground Stations	10/01/08	○					
Began Local Field Acceptance Testing - LFAT	10/24/08 *	○					
Completed OVI Guideway & Track Construction in the Tunnels - Segment 3	10/28/08	○					
Completed Track Construction throughout the Alignment	10/31/08 *	○					
Complete Entrance Structure at Boyle Heights / Miraflores Plaza Station	11/05/08 *		○				
Began Delivery of Motor Control Centers for Stations	11/10/08		○				
Complete Installation of Traction Power Substations	11/21/08		○				
Install Tunnel Portal Surveillance System	11/24/08 *		○				
Began Landscaping Throughout the Alignment	12/01/08			○			
Complete Installation of Cable Transmission System	12/10/08 *			○			
Complete 34.5 KV Feeder Cable Installation	12/23/08			○			
Complete CCS Installation Throughout the Alignment	12/29/08 *			○			
Complete Street Improvements Throughout the Alignment	12/30/08 *			○			
Start Systems Integration Testing Phase I (ELRTQ)	01/09/09				○		
Complete At-Grade Stations Canopy Installation	01/12/09 *				○		
Complete Train Control Installation Throughout the Alignment	01/19/09 *				○		
Complete Radio System Installation	01/30/09 *				○		
Complete Systems Installation at the ROCC	02/02/09					○	
Complete Landscape at Both Portals	02/13/09					○	
Complete First Station Construction - Indiana	02/19/09 *					○	
Start Systems Integration Testing Phase II (Metro)	03/16/09						◆
<div> <div>◆ LACMTA Staff Milestone</div> <div>○ Eastside LRT Constructors</div> <div>FTA</div> <div>FTA Approval</div> <div>△ Other Agencies</div> <div>* New Date</div> <div>M Metro</div> <div>LACMTA Board Approval</div> </div>							

Six-month lookahead schedule for Contract C0803 reflects the contractor's current CPM schedule.

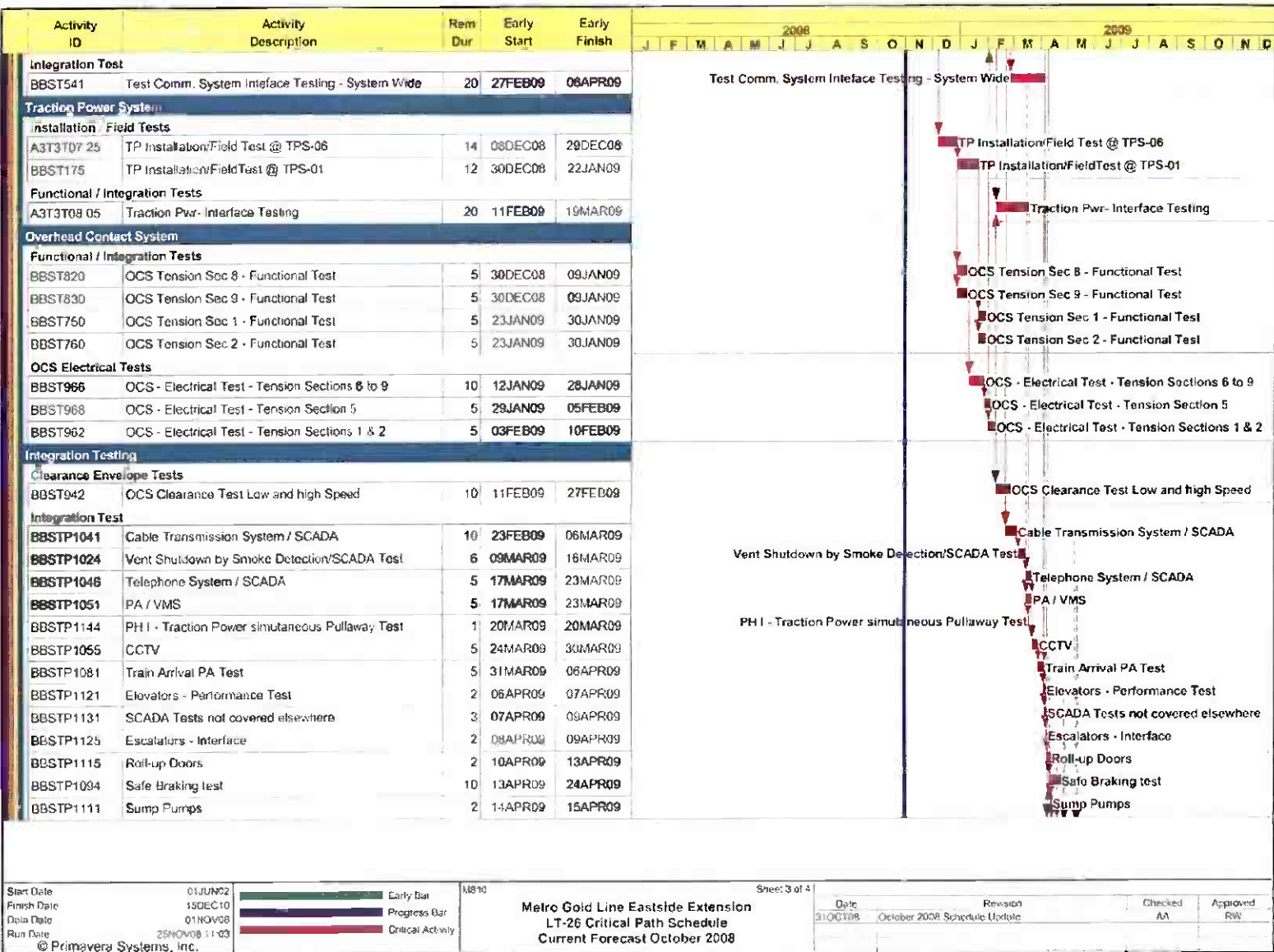
PROJECT MASTER SCHEDULE CRITICAL PATH (1 of 4)



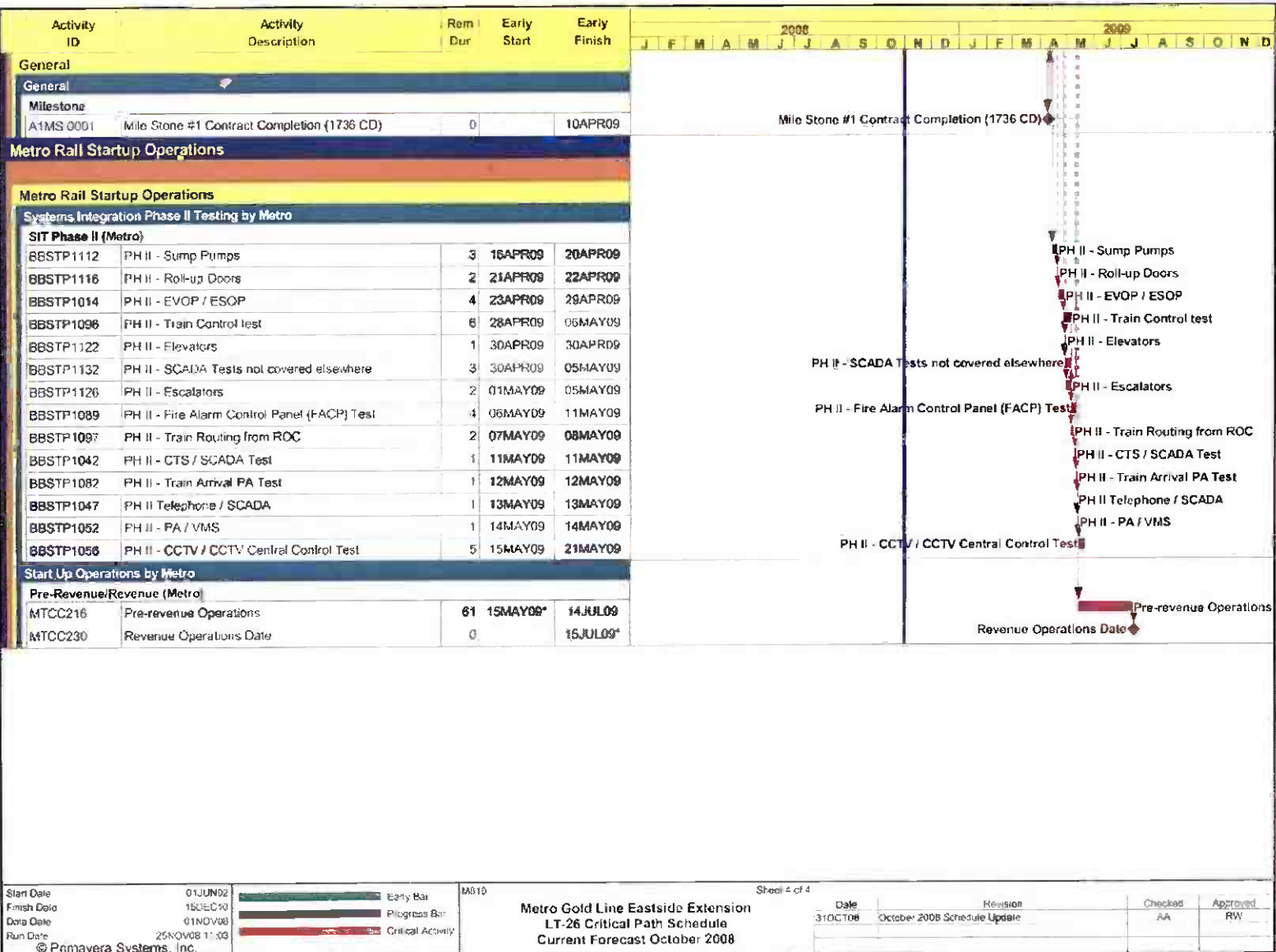
PROJECT MASTER SCHEDULE CRITICAL PATH (2 of 4)



PROJECT MASTER SCHEDULE CRITICAL PATH (3 of 4)



PROJECT MASTER SCHEDULE CRITICAL PATH (4 of 4)



Start Date 01JUN08
Finish Date 15DEC08
Data Date 01NOV08
Run Date 25NOV08 11:03
© Primavera Systems, Inc.

M810
Metro Gold Line Eastside Extension
LT-26 Critical Path Schedule
Current Forecast October 2008

Sheet 4 of 4
Date 31OCT08
Revision October 2008 Schedule Update
Checked AA
Approved RW

CRITICAL PATH NARRATIVE

Current Critical Path Analysis

With the exception of rail grinding and final clean up, track installation throughout the alignment is complete. Installation of Overhead Catenary System (OCS) poles, hangers and supports is near completion. Installation of OCS wiring and connections to the Traction Power Substations (TPS) grid are proceeding per plan.

The contractor continued assembly of station escalators at an off-site facility and began installation of escalators 3 and 4 at the Boyle Heights/Mariachi Plaza Station. Although the fabrication of station elevator frames continues on site, the C0803 contractor (ELRTC) is reporting their overall progress to be nine days behind schedule as a result of delays to the installation of elevators and communication systems at the underground stations. ELRTC is currently working with their subcontractors to increase the number of hours to be worked as a mitigation measure. Metro remains confident that the schedule can be mitigated without impacting the Revenue Operations Date.

There are two parallel critical paths in the current schedule. One is through installation and testing of elevators at both underground stations. The other is communications installation at Soto Station, and installation of communications throughout the alignment. Local facilities testing are the last stage of the critical path prior to entering the final test stage, where Systems Integration Testing and Pre-Revenue Operations are conducted.

PROJECT COST STATUS

COST REPORT BY ELEMENT ORIGINAL SCOPE ACTIVITIES DOLLARS IN THOUSANDS

ELEMENT	DESCRIPTION	ORIGINAL BUDGET	CURRENT BUDGET		COMMITMENTS		EXPENDITURES		CURRENT FORECAST		BUDGET / FORECAST VARIANCE
			PERIOD	TO DATE	PERIOD	TO DATE	PERIOD	TO DATE	PERIOD	TO DATE	
C	CONSTRUCTION	633,221	-	650,702	1,110	656,393	6,174	556,321	-	650,702	-
S	SPECIAL CONDITIONS	19,494	-	57,032	7	50,298	61	37,630	-	57,032	-
R	RIGHT-OF-WAY	40,358	-	37,681	1	38,488	-	38,284	-	37,681	-
P	PROFESSIONAL SERVICES	135,304	-	135,860	(61)	133,945	780	119,367	-	135,860	-
PC	PROJECT CONTINGENCY	60,254	-	7,401	-	-	-	-	-	7,401	-
PR	PROJECT REVENUE	(4,617)	-	(4,662)	-	-	-	(44)	-	(4,662)	-
SUBTOTAL		884,014	-	884,014	1,056	879,125	7,015	751,557	-	884,014	-
PF	PROJECT FINANCE COST	14,800	-	14,800	322	5,288	322	5,288	-	14,800	-
TOTAL		898,814	-	898,814	1,378	884,412	7,337	756,845	-	898,814	-

NOTE: EXPENDITURES ARE CUMULATIVE THROUGH SEPTEMBER 2008

PROJECT COST ANALYSIS

Original Budget

The Full Funding Grant Agreement (FFGA) was adopted June 1, 2004 in the amount of \$898.8 million. The Original Budget reflects the adopted FFGA.

Current Budget and Current Forecast

The Current Budget and Forecast remain the same at \$898.8 million.

Commitments

The Commitments increased by \$1.4 million this period primarily due to executed modifications associated with Contract C0803 – Tunnel, Stations, Trackwork, and Systems. In the Project Finance Cost element there was an increase of \$0.3 million that reflects an interest payment. Interest earned is received monthly and interest payments are made semi-annually. Interest earnings are not projected to be more than the interest costs. The \$884.4 million in Commitments to date represents 98.4% of the Original Budget.

Expenditures

Expenditures are cumulative through September 2008. The Expenditures increased by a total of \$7.3 million this period. In the Construction element there was an increase of \$6.2 million primarily due to costs associated with Contract C0803-Tunnel, Stations, Trackwork and Systems. In the Special Conditions element there was an increase of \$0.1 million primarily for costs associated with the Art Program. In the Professional Services element there was an increase of \$0.8 million primarily for costs associated with Metro Project Administration, Design Support During Construction and Construction Management Services. And in the Project Finance Cost element there was an increase of \$0.3 million that reflects an interest payment. The September 2008 invoice for Contract C0803 in the amount of \$9.3 million was posted in the Metro's Financial Information System (FIS) on October 6, 2008 and will be reflected in the next reporting period. The \$756.8 million in Expenditures to date represents 84.2% of the Original Budget.

PROJECT COST STATUS

COST REPORT BY ELEMENT CONCURRENT NON-FFGA PROJECT ACTIVITIES DOLLARS IN THOUSANDS

ELEMENT	DESCRIPTION	ORIGINAL BUDGET	CURRENT BUDGET		COMMITMENTS		EXPENDITURES		CURRENT FORECAST		BUDGET FORECAST VARIANCE
			PERIOD	TO DATE	PERIOD	TO DATE	PERIOD	TO DATE	PERIOD	TO DATE	
C	CONSTRUCTION	18,000	-	41,174	50	35,467	480	23,861	-	41,174	-
S	SPECIAL CONDITIONS	-	-	2,719	(63)	2,683	1	1,715	-	2,719	-
R	RIGHT-OF-WAY	-	-	-	-	-	-	-	-	-	-
P	PROFESSIONAL SERVICES	-	-	2,897	-	3,333	82	1,133	-	2,897	-
PC	PROJECT CONTINGENCY	-	-	-	-	-	-	-	-	-	-
PR	PROJECT REVENUE	-	-	(4,087)	(69)	(4,789)	-	(279)	-	(4,087)	-
SUBTOTAL		18,000	-	42,703	(81)	36,695	564	26,431	-	42,703	-
PF	PROJECT FINANCE COST	-	-	-	-	-	-	-	-	-	-
TOTAL		18,000	-	42,703	(81)	36,695	564	26,431	-	42,703	-

NOTE: EXPENDITURES ARE CUMULATIVE THROUGH SEPTEMBER 2008

PROJECT COST ANALYSIS

Original Budget

The Metro Board adopted the Original Budget of \$18.0 million on March 24, 2005.

Current Budget and Current Forecast

The Current Budget and Forecast remain the same at \$42.7 million.

Commitments

The Commitments decreased by \$0.1 million this period primarily due to less than anticipated Archeological Support and additional credit for mitigation of City caused delays to the 1st Street Bridge. The \$36.7 million in Commitments to date represents 85.9% of the Current Budget.

Expenditures

Expenditures are cumulative through September 2008. The Expenditures increased by \$0.6 million this period primarily for costs associated with the installation and testing of the traction power substations, street restoration and improvements, urban design elements, Metro Project Administration, Design Support During Construction, and Construction Management. The September 2008 invoice for Contract C0803 in the amount of \$0.2 million was posted in the Metro's Financial Information System (FIS) on October 6, 2008 and will be reflected in the next reporting period. The \$26.4 million in Expenditures to date represents 61.9% of the Current Budget.

FINANCIAL/GRANT STATUS – ORIGINAL SCOPE ACTIVITIES

OCTOBER 2008

STATUS OF FUNDS BY SOURCE

SOURCE	(A) ORIGINAL BUDGET	(B) TOTAL FUNDS ANTICIPATED	(C) TOTAL FUNDS AVAILABLE	(D) COMMITMENTS \$	(D/B) %	(E) EXPENDITURES \$	(E/B) %	(F) BILLED TO FUNDING SOURCE \$	(F/B) %
FEDERAL - SECTION 5309 NEW START	\$490.700	\$490.700	\$333.593	\$489.525	100%	\$405.761	83%	(1) \$402.772	82%
FED - SECTION 5309 FIXED GUIDEWAY	\$23.100	\$12.000	\$12.000	\$12.000	100%	\$12.000	100%	\$12.000	100%
FEDERAL - CMAQ	\$10.300	\$10.300	\$10.276	\$10.276	100%	\$10.276	100%	\$10.276	100%
REGIONAL IMPROVEMENT PROG - FED	\$179.600	\$4.600	\$4.600	\$4.600	100%	\$4.600	100%	\$4.600	100%
REGIONAL IMP PROG - STATE	\$0.600	\$175.600	\$131.796	\$175.600	100%	\$131.796	75%	\$131.796	75%
STATE TCRP	\$45.000	\$45.000	\$45.000	\$45.000	100%	\$45.000	100%	\$45.000	100%
PROP A 35% / PROP C 40%/PROP 25%	\$124.614	\$135.714	\$132.024	\$132.024	97%	\$132.024	97%	\$132.024	97%
LEASE REVENUES	\$10.100	\$10.100	\$10.100	\$10.100	100%	\$10.100	100%	\$10.100	100%
ACCRUALS									
SUB-TOTAL	\$684.014	\$884.014	\$679.389	\$879.125	99%	\$751.557	85%	\$748.568	85%
PROP A / PROP C (INTEREST COST)	\$14.800	\$14.800	\$5.288	\$5.288	36%	\$5.288	36%	\$2.465	17%
TOTAL	\$898.814	\$898.814	\$684.677	\$884.413	98%	\$756.845	84%	\$751.033	84%

NOTE: EXPENDITURES ARE CUMULATIVE THROUGH SEPTEMBER 2008.

STATUS OF FUNDS ANTICIPATED

FEDERAL SECTION 5309 NEW STARTS: LACMTA has received an appropriation of \$333.6M through FY08. LACMTA submitted a grant application for \$78.4 M in March 2008. The grant was approved on June 17, 2008 and funds are available for drawdown.

RIP-STATE: LACMTA's allocation request of \$43.8M to the CTC was approved in July 2008. Program supplement is pending execution from the State. Execution is expected in November 2008.

FINANCIAL/GRANT STATUS
CONCURRENT NON-FFGA PROJECT ACTIVITIES

OCTOBER 2008

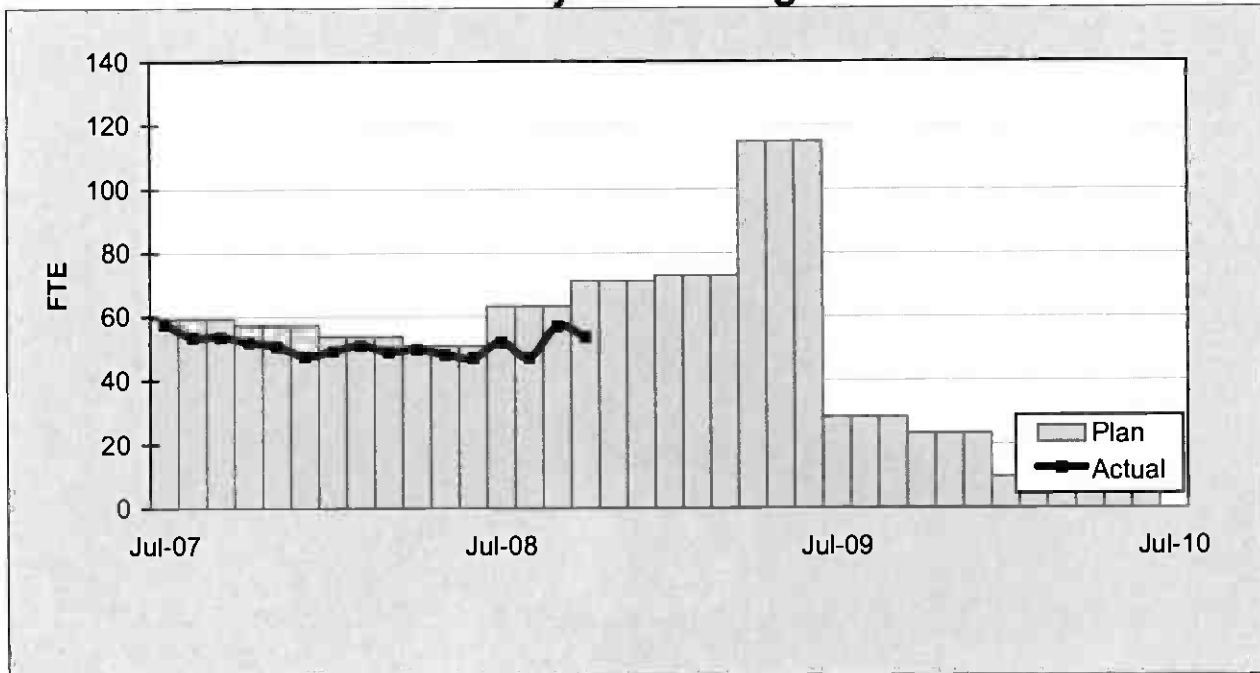
STATUS OF FUNDS BY SOURCE

SOURCE	(A) APPROVED BUDGET	(B) TOTAL FUNDS ANTICIPATED (1)	(C) TOTAL FUNDS AVAILABLE	(D) COMMITMENTS \$	(D/B) %	(E) EXPENDITURES \$	(E/B) %	(F) BILLED TO FUNDING SOURCE \$	(F/B) %
PROP C 40%	\$14.000	\$14.000	\$14.000	\$14.000	100%	\$7.567	54%	\$3.619	26%
PROP C 10%	\$4.000	\$4.000	\$4.000						
STATE TCR	\$0.000	\$24.086	\$24.086	\$22.695	94%	\$18.864	78%	\$18.864	78%
STATE TSA	\$0.000	\$0.617	\$0.000	\$0.000	0%	\$0.000	0%	\$0.000	0%
TOTAL	\$18.000	\$42.703	\$42.086	\$36.695	86%	\$26.431	62%	\$22.483	53%

NOTE: EXPENDITURES ARE CUMULATIVE THROUGH SEPTEMBER 2008.

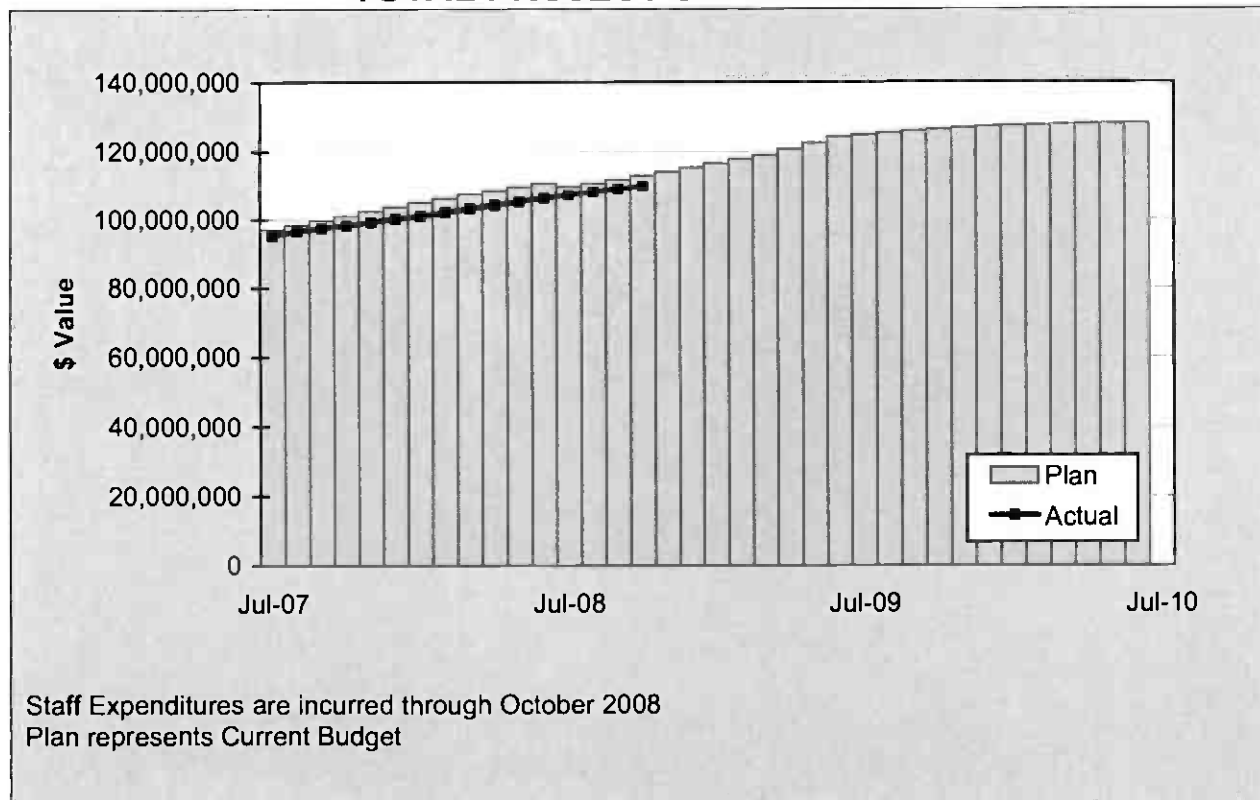
STAFFING STATUS

Total Project Staffing - FTES



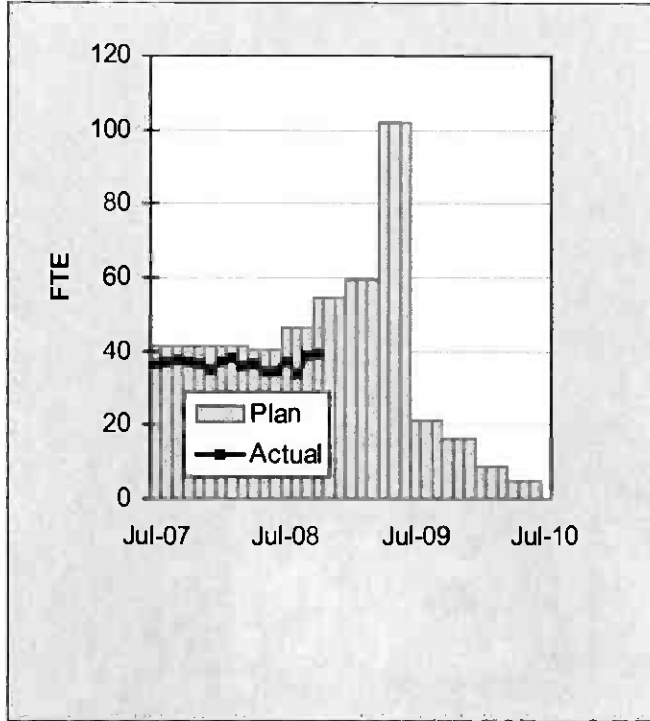
STAFFING STATUS

TOTAL PROJECT STAFFING COST

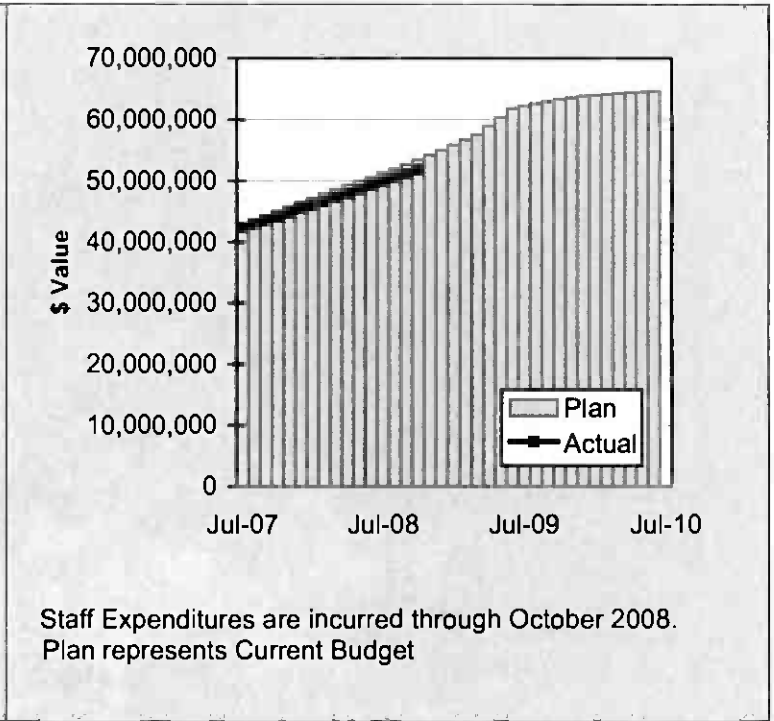


STAFFING STATUS

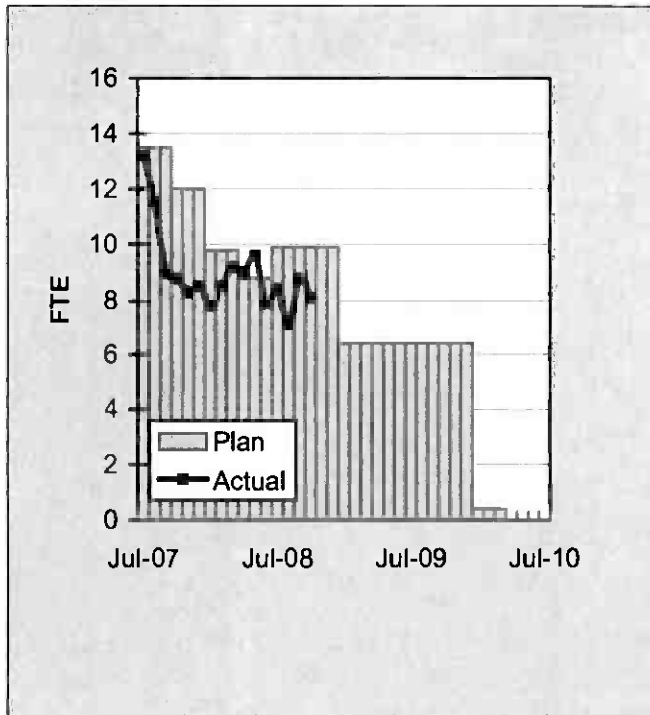
DIRECT AGENCY - FTES



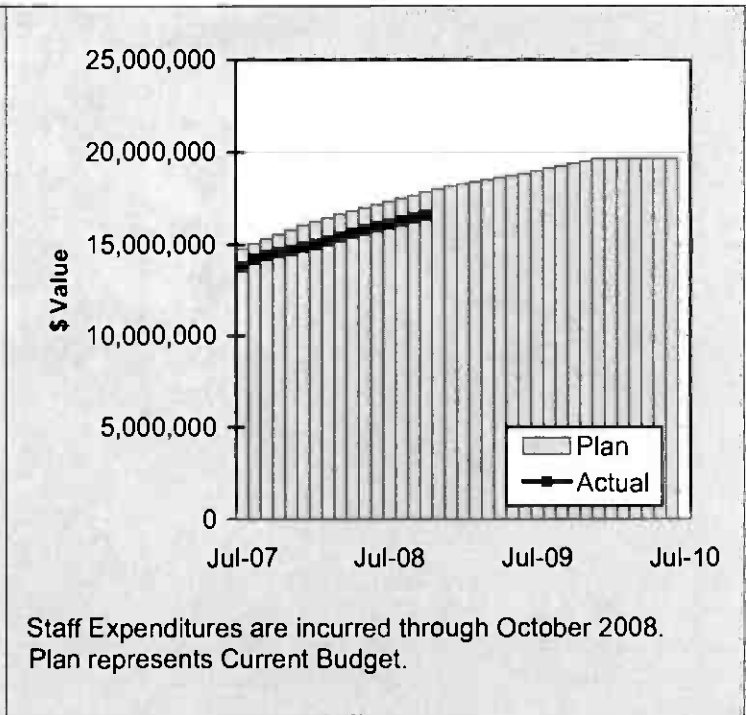
DIRECT AGENCY - COST



CONSTRUCTION MGMT – FTES

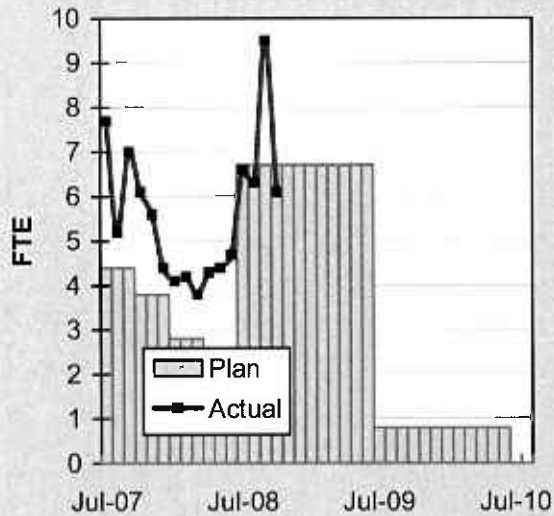


CONSTRUCTION MGMT - COST

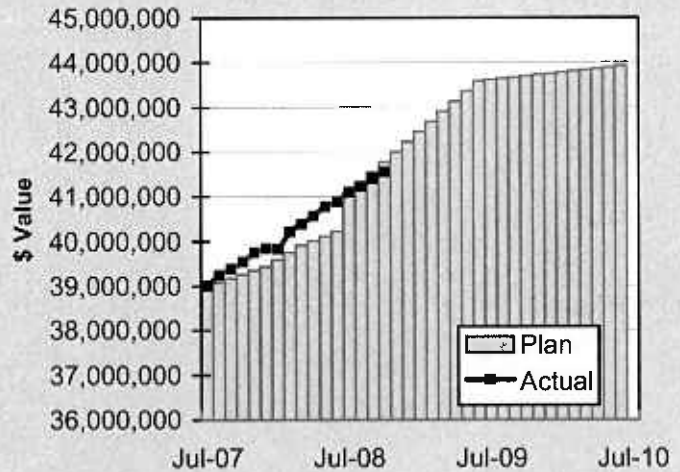


STAFFING STATUS

ELRT PARTNERS - FTES



ELRT PARTNERS - COST



Staff Expenditures are incurred through October 2008.
Plan represents Current Budget

REAL ESTATE STATUS

- For C0803, the tunnel portion of the alignment, 40 parcels were required for acquisition (11 full takes, 4 partial takes, 20 sub-surface easements/temporary construction easements, 3 sub-surface easements/building protection, and 2 building protections).
- For C0803, the at-grade portion of the alignment, 27 parcels were required for acquisition (17 full takes, 9 partial takes and 1 surface easement). Nine parcels were required for the LAUSD Ramona Opportunity High School site reconfiguration.
- For C0802, 2 parcels were required (1 surface easement and 1 full take parcel).
- Two Encroachment Permits were obtained from Caltrans for the C0803-Tunnel. Three street closures were obtained from the City of LA.

REAL ESTATE ACQUISITION SCHEDULE SUMMARY

<i>Number of Parcels</i>	Required	Acquired	On Schedule	Behind Schedule	
				Number	Avg. Calendar Days
This Period	69	69	0	0	0
Last Period	69	69	0	0	0

REAL ESTATE STATUS TO DATE BY CONTRACT ACQUISITION PHASE

CONTRACT NO.	Number of Parcels (A+B+C+D+E)	Agreements Signed (A)	Parcels in Condemnation (B)	Under Negotiation (C)	In Appraisal Process (D)	Inactive Parcels (E)	Parcels Available
C0803-Tunnel	40	40	0	0	0	0	40
C0803-At-Grade	27	27	0	0	0	0	27
C0802	2	2	0	0	0	0	2
TOTAL	69	69	0	0	0	0	69
LAST PERIOD	69	69	0	0	0	0	69

ENVIRONMENTAL STATUS

- The University of Illinois conducted DNA analysis on the molars from the human remains discovered at the Los Angeles Crematorium.
- The design for the memorial wall at Evergreen Cemetery is under review.
- Submitted a categorical exemption for the Pomona/Atlantic parking structure to the FTA for approval.

COMMUNITY RELATIONS STATUS

- Distributed six construction notices which reached approximately 11,750 residences/businesses. Activities included canopy delivery, concrete pours, civil improvements and rail grinding.
- Met with 23 residents/business owners to coordinate construction activities.
- Delivered one Open During Construction banner and thirty-six banners promoting the Project.
- Held monthly Executive Review Advisory Committee Meeting and Review Advisory Committee Meeting.
- Supported the White Memorial 2008 Gala and the East LA Community Youth Center's 2008 Angel Awards.

QUALITY ASSURANCE STATUS

- Continued to review the Design Builder's Monthly Asphalt, Concrete Compressive Strength and Soils Compaction test report summaries - areas of concern are coordinated to resolution with the onsite lab representative.
- Conducted verification testing of Design Builder's special inspections utilizing independent testing laboratory technician; no issues to report.
- The results of field surveillance activities are documented in Weekly Surveillance Reports, including color digital pictures identifying sites of surveillance and issues of concern.
- Witnessed factory acceptance testing of motor control centers and booster fans at the manufacturer's facilities. No issues of concern were identified.

SAFETY STATUS

- Participated in weekly progress meetings with Construction Managers and ELRTC management personnel to discuss safety related issues and construction schedule.
- Conducted Safety and Security trespasser drills with ELRTC safety and security personnel.
- Conducted All Hands Safety/Security Meeting with contractor safety personnel, Los Angeles Sheriff's and the Los Angeles Police Department.
- Monitored construction activities on a daily basis, including weekends, to ensure contractor compliance with Contract Specification.
- ELRTC and their subcontractors reported zero recordable incidents and 75,516 work hours for the month of October 2008. A total of thirty-nine (39) recordable incidents have occurred Project to Date. Total Project to Date work hours are 3,610,516. Injury Rates for Recordable incidents are 2.1; well below the published incident rate of 5.3.

ART DEVELOPMENT STATUS

- Coordination meetings with Metro Construction and ELRTC for artwork fabrication/installation schedules for eight stations.

THIRD PARTY AGREEMENT STATUS

Third Party	Type of Agreement	Forecast Execution Date	Required Need Date	Status/ Comments
City of Los Angeles	Amendment	Completed	N/A	Executed December 2002.
Los Angeles County	Master	Completed	N/A	Executed April 2003.
Caltrans (All Projects)	Master	Completed	N/A	Executed July 2003.
Caltrans (101)	Design	Completed	N/A	Executed July 2003.
Caltrans (101)	Construction	Completed	N/A	Executed September 2003.
Caltrans (101)	Maintenance	12/08	Project Completion	The initial negotiation meeting was held on 1/9/03. LACMTA received a draft from Caltrans on 1/22/04. LACMTA reviewed and submitted the agreement to Caltrans on 2/10/04. A follow up call was made on 10/20/05 but no response to date.
LADWP (Water/Power)	Amendment	11/08	*6/04	LACMTA Management, County Counsel, and LACMTA Board staff have participated in meetings with DWP to complete negotiations, since the "Deadline and Delay" clause is not acceptable to LADWP. Alternative language was forwarded to LACMTA Management and County Counsel for review on 10/7/05. LACMTA CEO is to speak with LADWP CEO.
So. Cal. Edison Co.	Amendment	N/A	N/A	SCE Executive Legal Branch stated on 2/25/05 they have no intention of signing agreement.
The Gas Company	Amendment	Completed	N/A	Executed May 2005.
SBC/AT & T	Amendment	Completed	N/A	Executed May 2005. SBC has been acquired by AT&T and has formed a new corporation TCM for work in Southern California. A new agreement has been negotiated with Metro and TCM, which was approved by the Metro Board in April. The new agreement mirrors the SBC agreement except for some minor changes in the insurance language.
Adelphia Cable Company	Amendment	11/08	*6/04	LACMTA received a draft from Adelphia for review. LACMTA Management and County Counsel reviewed the amendment and returned the document to Adelphia with comments. Adelphia's Legal Department is reviewing the document and follow-up calls were made on 10/20/05 and 11/16/05.
Calif Wtr Service Co	Master	Completed	N/A	Executed May 2005.
L.A. County Sanitation Districts	N/A	N/A	N/A	In a letter dated 3/26/03, the Sanitation District stated that there is not a need for an agreement since there are no relocations related to their facilities. The Sanitation District will review submittals related to encasements of their facilities on Indiana Street.
MCI Worldcom	Amendment	Completed	N/A	Executed May 2005.
Metropolitan Wtr Dist	Amendment	Completed	N/A	Executed May 2003.

THIRD PARTY AGREEMENT STATUS

Third Party	Type of Agreement	Forecast Execution Date	Required Need Date	Status/ Comments
Verizon Wireless	Amendment	11/08	*6/04	The revised draft amendment was hand delivered to Verizon on 11/19/03 and an electronic copy was sent to them 2/19/04. Verizon did respond with comments, which were reflected in a revised agreement sent 4/05. Verizon legal is completing final review. Follow up calls were made on 10/20/05 and 11/16/05. Verizon has now joined MCI and once the legal work is complete in late February 2006, LACMTA may be able to use the MCI Agreement for Verizon work. E-mailed MCI Agreement to Verizon Representative for consideration as overall agreement covering Verizon and MCI as the new Verizon.
GST	N/A			Facilities are not impacted by Eastside Construction
Exxon Mobil Oil Company	N/A			Facilities are not impacted by Eastside Construction
Pacific Pipeline Company	N/A			Facilities are not impacted by Eastside Construction
Kinder Morgan Pipeline Company	N/A			Facilities are not impacted by Eastside Construction
Tosco Refining Company	N/A			Facilities are not impacted by Eastside Construction
Equilon Pipeline Company	N/A			Facilities are not impacted by Eastside Construction
Level 3 Communications	N/A			Facilities are not impacted by Eastside Construction
Broadwing Communications	N/A			Facilities are not impacted by Eastside Construction
Eller Media	N/A			Facilities are not impacted by Eastside Construction

* Work will be performed under the current MCA and will not delay ongoing work.

CPUC CROSSING SUMMARY

Batch	Application Status	Initial Package Submittal to MTA	Field Diagnostic Meeting	Revised Drawings Due to MTA	Draft Write-up to MTA	Draft Package Submittal to PUC Local office and Agencies	Final Package Submittal to PUC	CPUC Final Approval
1	Complete	8/5/02	8/12/02	8/26/02	9/6/02	9/6/02	9/6/2002	Approved
2	Complete	10/4/02	10/11/02	10/25/02	11/6/02	11/22/02	11/22/2002	Approved
3	Complete	2/6/03	2/27/03	3/10/03	1/27/03	4/11/02	4/18/2003	Approved
4	Complete	12/14/02	1/15/03	1/29/03	11/13/02	5/5/03	6/18/2003	Approved
4A	Complete	1/24/03	1/29/03	3/14/03	2/7/03	9/5/03	1/23/2004	Approved
6	Complete	3/19/03	3/26/03	6/20/03	2/7/03	9/5/03	9/12/2003	Approved
7	Complete	12/11/02	12/18/02	3/31/03	2/7/03	5/5/03	7/25/2003	Approved
8	Complete	11/26/02	12/18/02	3/31/03	11/15/02	6/6/03	5/21/2004	Approved
9	Complete	1/20/03	1/29/03	3/31/03	11/22/02	8/29/03	9/12/2003	Approved
10	Complete	12/11/03	12/18/02	3/10/03	11/22/02	5/5/03	8/29/2003	Approved
11	Complete	2/13/03	2/27/03	4/18/03	12/6/02	6/6/03	8/29/2003	Approved
12	Complete	2/13/03	2/27/03	4/18/03	12/13/02	6/6/03	9/5/2003	Approved
13	Complete	2/6/03	2/20/03	4/18/03	2/21/03	6/6/03	9/1/2004	Approved
14	Complete	1/8/03	1/15/03	3/14/03	11/12/02	8/29/03	10/30/2003	Approved
15	Complete	2/26/03	N/A	N/A	2/21/03	6/6/03	8/29/2003	Approved
16	Complete	2/26/03	N/A	N/A	2/28/03	6/6/03	8/29/2003	Approved
17	Complete	1/8/03	1/15/03	N/A	2/14/03	5/5/03	6/13/2003	Approved
18	Complete	1/8/03	1/15/03	3/20/03	2/14/03	5/5/03	6/13/2003	Approved
Agency Responsible		ELRTP	MTA	ELRP	ELRTP	MTA	MTA	

Batch No. 5 has been removed, as the Midway Yard will be utilized.

SHADED AREAS REPRESENTS COMPLETION

All applications are approved.

Batch Descriptions			
1	1st / Alameda	10	3rd / Ford
2	Alameda / Temple		3rd / McDonnel
	1st / Hewitt		3rd / Arizona
	Ped Crossings @ 1st / Alameda Station	11	3rd / Mednik
3	1st / Vignes		3rd / Civic Center Drive
4	1st / Lorena		3rd / La Verne
4A	Indiana/1st	12	3rd / Driveways to Sherriff's Station
	Indiana/3rd		3rd / Wood / Via Corona / Pomona / Beverly
	Indiana Pedestrian Crossing	13	3rd / 60 Fwy WB Connector
6	1st / Mission		3rd / 60 Fwy over ELRT
	1st / Anderson		3rd / 710 Fwy SW Connector
	1st / Clarence		3rd / Bridge over 710 Fwy
	1st / Utah		3rd / 710 Fwy SE Connector
	1st/Gless Pedestrian Crossing	14	Union Station Service Road
7	3rd / Rowan	15	1st / Santa Fe
			1st / Myers
8	3rd / Gage	16	1st / MTA
	3rd / 60 Fwy WB Ramps		1st / BNSF
	3rd /Downey		1st / Union Pacific

CONTRACT C0802 STATUS

Description: 101 Freeway Bridge Overcrossing Contractor: Brutoco Engineering & Construction	Contract No. C0802 Status as of: October 31, 2008																								
Progress/Work Completed: <ul style="list-style-type: none"> * Bridge work was completed in March 2007 * Plant Maintenance period achieved November 2007 Areas of Concern: <ul style="list-style-type: none"> * None 	Major Activities (In Progress): <ul style="list-style-type: none"> * None Major Activities Next Period: <ul style="list-style-type: none"> * None 																								
Schedule Summary: Date of Award: 09/07/04 Notice to Proceed: 09/22/04 Original Contract Duration: 700 CD Current Contract Duration: 775 CD Elapsed Time from NTP: 904 CD * * Note: Elapsed time to Milestone # 1 completion	<table border="1" style="width: 100%; border-collapse: collapse;"> <thead> <tr> <th></th> <th>Original Contract Dates</th> <th>Time Extension</th> <th>Current Contract</th> <th>Forecast</th> <th>Variance CDs</th> </tr> </thead> <tbody> <tr> <td>Notice to Proceed</td> <td>09/22/04</td> <td>0</td> <td>09/22/04</td> <td>09/22/04</td> <td>0</td> </tr> <tr> <td>Milestone 1 - Complete Abutment No. 10</td> <td>06/26/06</td> <td>49</td> <td>08/14/06</td> <td>03/15/07</td> <td>-213</td> </tr> <tr> <td>Milestone 2- Complete All Work Without Plant Establishment t</td> <td>08/23/06</td> <td>75</td> <td>11/06/06</td> <td>08/06/07</td> <td>-273</td> </tr> </tbody> </table>		Original Contract Dates	Time Extension	Current Contract	Forecast	Variance CDs	Notice to Proceed	09/22/04	0	09/22/04	09/22/04	0	Milestone 1 - Complete Abutment No. 10	06/26/06	49	08/14/06	03/15/07	-213	Milestone 2- Complete All Work Without Plant Establishment t	08/23/06	75	11/06/06	08/06/07	-273
	Original Contract Dates	Time Extension	Current Contract	Forecast	Variance CDs																				
Notice to Proceed	09/22/04	0	09/22/04	09/22/04	0																				
Milestone 1 - Complete Abutment No. 10	06/26/06	49	08/14/06	03/15/07	-213																				
Milestone 2- Complete All Work Without Plant Establishment t	08/23/06	75	11/06/06	08/06/07	-273																				
Physical Percent Complete: Physical completion ** as of this reporting period is: 100.00% ** Note: Physical completion assessment reflects work completed and invoice amount shown in Caltrans Monthly Progress/Expense Report No. 30.	Cost Summary: \$ In millions <table style="width: 100%;"> <tr> <td>1. Award Value:</td> <td style="text-align: right;">6.42</td> </tr> <tr> <td>2. Executed Modifications:</td> <td style="text-align: right;">0.00</td> </tr> <tr> <td>3. Approved Change Orders:</td> <td style="text-align: right;">0.00</td> </tr> <tr> <td>4. Current Contract Value (1+2+3):</td> <td style="text-align: right;">6.42</td> </tr> <tr> <td>5. Incurred Cost:</td> <td style="text-align: right;">6.42</td> </tr> </table>	1. Award Value:	6.42	2. Executed Modifications:	0.00	3. Approved Change Orders:	0.00	4. Current Contract Value (1+2+3):	6.42	5. Incurred Cost:	6.42														
1. Award Value:	6.42																								
2. Executed Modifications:	0.00																								
3. Approved Change Orders:	0.00																								
4. Current Contract Value (1+2+3):	6.42																								
5. Incurred Cost:	6.42																								

CONTRACT C0803 STATUS

Description: Tunnel, Stations, Trackwork & Systems Contractor: Eastside LRT Constructors	Contract No. C0803 Status as of: October 31, 2008					
Progress/Work Completed: * Poured specialty concrete around Mariachi Plaza Sta. (MPS) Kiosk * Poured stair # 1 and exhaust vent shaft # 3 roof at MPS entrance * Assembled and installed MPS escalator # 4-mezzanine to platform * Installed gas detection and train control cabinets - MPS TC&C room * Poured Solo Station (SS) entrance mechanical room roof slab * Completed SS acoustical spray at the mezzanine level * Ceiling supports at the SS mezzanine level * Started delivery of emergency fans for the MPS and SS * Install OCS poles in Segment 1 and messenger wire in Segments 3 * Pulled train control (TC) signal and communications (Comm) cable between Union Station and Little Tokyo/Arts District (LTAD) Station * TC&C room lighting at LTAD and Pico/Aliso (PA) Sta. * Poured platform edge tactile concrete slab at LTAD and PA Sta. * Installed OCS contact wire along Segment 2B * Cross-walks, curb, gutter and bus pads - 1st Street/ Lorena St. * Pulled Comm cable from Maravilla Station to the East Portal * Completed architectural platform paving at Maravilla Station * Installed UPS racks and batteries at the Atlantic, East Los Angeles Civic Center (ELACC) and Maravilla Stations TC&C rooms * Installed platform lights at the Atlantic, Maravilla and Indiana Sta.	Major Activities (In Progress): * Architectural finishes at the MPS entrance and Kiosk * Install tile on the mezzanine walls at MPS * Assemble and install escalators at MPS and SS * Lighting installation at MPS and SS mezzanine and entrance * Ceiling grid and panels at MPS and SS mezzanine level * Install UPS cabinets and batteries at MPS and SS TC&C rooms * Pour stair Nos. 2 and 3 at Solo Station - mezzanine to platform * HVAC ducts and Fire Suppression pipe at the East Portal rooms * Install OCS cantilevers and messenger wire in Segments 1 & 3 * Pull train control signal and communications cable between Little Tokyo/Arts District and Pico/Aliso Stations * Pull lighting and power wire in both tunnels * Install systems equipment at the LTAD and PA Sta. TC&C rooms * Canopy frame erection at the LTAD and PA Stations * Architectural platform paving at Indiana and Atlantic Stations * Fabricate Motor Control Centers (MCC) and elevator frames Major Activities Next Period: * Complete acoustical spray and ceiling grid at MPS and SS * Install elevators, emergency fans and MCCs at MPS and SS * Install 34.5 KV power cable in the eastbound tunnel * Mechanical and electrical equipment at all cross passages * Terminate 34.5 KV cable on the OCS catenary * Commission TPS-04, TPS-05, TPS-06 * Painting of canopies at Indiana and Maravilla Stations * OCS contact wire at Union Station and in the tunnels * Set TC cabinets in the above grade (AG) stations TC&C rooms * PA/VMS equipment, lighting and finishes at AG stations * Final paving, striping, lighting and traffic signals-Segs. 1, 2 and 4					
Schedule Summary: Date of Award: 06/01/04 Notice to Proceed: 07/01/04 Original Contract Duration: 1795 CD Current Contract Duration: 1882 CD Elapsed Time from NTP: 1584 CD Option D Contract duration 90 CD Complete		Original Contract Dates	Time Extension	Current Contract	Forecast	Variance CDs
	Notice to Proceed	07/01/04	0	07/01/04	07/01/04	0
	Milestone 1 - Contract Completion. Complete all systems integration testing and ready for MTA's pre-revenue operation testing.	12/31/08	91	04/01/09	04/10/09	-9
	Milestone 3 - Complete Universal Fare System Equipment area.	04/30/08	250	01/05/09	01/05/09	0
	Milestone 5 - Vacate all staging areas and turn over to MTA.	05/30/09	87	08/25/09	08/25/09	0
	Milestone 6 - Complete design and construction of Option D work.	09/28/04	0	09/28/04	09/28/04	0
Physical Percent Complete: Physical completion * as of this reporting period is: 88.36% * Note: Physical completion assessment reflects work completed and work in progress.	Cost Summary: \$ In millions 1. Award Value: 600.45 2. Executed Modifications: 13.95 3. Approved Change Orders: 0.20 4. Current Contract Value (1+2+3): 614.60 5. Incurred Cost: 549.72					

CONTRACT E700051F STATUS

Description: 1st Street Bridge Strengthening Contractor: The Griffith Company	Contract No. E700051F Status as of: October 31, 2008																		
Progress/Work Completed: * Bridge turned over to Metro on October 26, 2007 Areas of Concern: * None	Major Activities (In Progress): * None Major Activities Next Period: * None																		
Schedule Summary: Date of Award: 01/19/07 Notice to Proceed: 02/06/07 Original Contract Duration: 251 CD Current Contract Duration: 281 CD Elapsed Time from NTP: 281 CD	<table border="1" style="width: 100%; border-collapse: collapse;"> <thead> <tr> <th></th> <th>Original Contract Dates</th> <th>Time Extension</th> <th>Current Contract</th> <th>Forecast</th> <th>Variance CDs</th> </tr> </thead> <tbody> <tr> <td>Notice to Proceed</td> <td>02/06/07</td> <td>0</td> <td>02/06/07</td> <td>02/06/07</td> <td>0</td> </tr> <tr> <td>Milestone 1 - Substantial Completion</td> <td>10/15/07</td> <td>30</td> <td>11/14/07</td> <td>11/14/07</td> <td>0</td> </tr> </tbody> </table>		Original Contract Dates	Time Extension	Current Contract	Forecast	Variance CDs	Notice to Proceed	02/06/07	0	02/06/07	02/06/07	0	Milestone 1 - Substantial Completion	10/15/07	30	11/14/07	11/14/07	0
	Original Contract Dates	Time Extension	Current Contract	Forecast	Variance CDs														
Notice to Proceed	02/06/07	0	02/06/07	02/06/07	0														
Milestone 1 - Substantial Completion	10/15/07	30	11/14/07	11/14/07	0														
Physical Percent Complete: Physical completion as of 11/14/07: 100.00% * * As reported by the City of Los Angeles, Department of Contract Administration	Cost Summary: \$ In millions <table style="width: 100%;"> <tr> <td style="width: 80%;">1. Award Value: *</td> <td style="text-align: right;">4.26</td> </tr> <tr> <td>2. Executed Modifications:</td> <td style="text-align: right;">0.00</td> </tr> <tr> <td>3. Approved Change Orders:</td> <td style="text-align: right;">0.05</td> </tr> <tr> <td>4. Current Contract Value (1+2+3):</td> <td style="text-align: right;">4.31</td> </tr> <tr> <td>5. Incurred Cost:</td> <td style="text-align: right;">4.31</td> </tr> </table> * City of Los Angeles	1. Award Value: *	4.26	2. Executed Modifications:	0.00	3. Approved Change Orders:	0.05	4. Current Contract Value (1+2+3):	4.31	5. Incurred Cost:	4.31								
1. Award Value: *	4.26																		
2. Executed Modifications:	0.00																		
3. Approved Change Orders:	0.05																		
4. Current Contract Value (1+2+3):	4.31																		
5. Incurred Cost:	4.31																		

CONTRACT P2550 STATUS

Description: 2550 Rail Vehicle Program Contractor: AnsaldoBreda, Italy (AB)		Contract No. P2550 Status as of: October 31, 2008			
Progress/Work Completed: 1. As of November 7th, eight vehicles have been accepted by MTA and 7 vehicles are undergoing testing for acceptance. 2. Vehicle final assembly work continues in Pittsburg, CA. 3. Shipment of foreign and domestic parts for final assembly continue to arrive in Pittsburg, CA. 4. Several Engineering meetings with AB have been held to evaluate progress and to close open items. 6. Vehicle Nos. 714 and 718 are the next vehicles to be accepted. Areas of Concern: Since Vehicles 706 and 708 have been in revenue service, vehicles have experienced propulsion and low voltage power supply problems. AB Engineers have tested vehicles and interim corrective actions have been implemented. Final propulsion software solution was tested in October 2008 and final software revision has been installed on the fleet.		Major Activities (In Progress): 1. AnsaldoBreda's manufacturing plants in Pistoia and Naples, Italy continue to prepare carshells and subassemblies for shipment to U.S.A. Pittsburg plant continues vehicle assembly work. 2. Testing of Vehicles 714, 718 & 713 is ongoing in Los Angeles for next vehicle acceptance. 3. Weekly project meetings are held to close open items. Major Activities Next Period: 1. Several Technical Progress meetings will be held to emphasize the urgency of resolution of remaining critical items for final acceptance of vehicles. 2. Cars 714 and 718 will continue final testing for Conditional Acceptance in November 2008.			
			Quantity	Contract Total Quantity	Balance Due
Schedule Summary: Date of Award: 04/24/03 Notice to Proceed: 06/06/03 Original Contract Duration: 1442 CD Elapsed Time from NTP: 1910 CD Note: Metro and AnsaldoBreda agreed to Mod No. 8 which extended the Options ordering period from April 2008 to October 2008, Currently negotiating extension of Options to July 2009 . A schedule of vehicle delivery has been submitted by AB with 50th (last) car delivered by July 2010.		Notice to Proceed 6/6/2003A			
		Vehicles Assembled	39	50	11
		LRV at Commissioning Site - Metro	15	50	35
		LRV Accepted for Revenue Service by Metro	8	50	42
Physical Percent Complete: Percent of LRVs assembled = 39/50 = 78% Percent Work Product Invoiced through October 2008 is 52		Cost Summary: \$ In millions 1. Award Value: Pasadena (Proj. No.: 800151) 126.99 Eastside Ext. (Proj. No.: 800088) 31.75 Total Award Value 158.74 2 Executed Modifications 0.00 3 Approved Change Orders: 0.00 4 Current Contract Value (1 + 2 + 3): 158.74 5 Payments or invoices in process: 83.28			

CONSTRUCTION PHOTOGRAPHS



Rail grinding along the alignment, prior to rail vehicle testing.



Boyle/Heights Mariachi Plaza Station entrance plaza.

CONSTRUCTION PHOTOGRAPHS



Placement of the street mountable curb on the westbound track guideway.



Preparation of emergency lighting to be installed at the Pomona/Atlantic Station.

CONSTRUCTION PHOTOGRAPHS



View of Maravilla Station.



Canopy at Pico/Aliso Station.

APPENDIX

COST AND BUDGET TERMINOLOGY

ESTIMATED PROJECT COSTS: Estimated project costs are based upon the current project cost estimates that are produced during the engineering design phase.

COMMITMENTS: The total of actual contract awards, executed change orders or amendments, approved work orders of Master Cooperative Agreements, offers accepted for purchase of real estate, and other LACMTA actions that will result in specific expenditures at a future time.

INCURRED COST: The total value of work performed to date of services received, and acquired materials or properties.

EXPENDITURES: The total dollar amount of checks written by the LACMTA's Accounting department for contractor or consultant invoices, third party invoices, staff salaries, and closing payments for escrow accounts that is reported in the LACMTA's Financial Information System (FIS).

CONSTRUCTION: Includes guideways, yards and shops, systems equipment, stations, and vehicles.

PROFESSIONAL SERVICES: Includes general engineering, construction management services, consultant design support services during construction, legal counsel, and agency (LACMTA staff) costs.

RIGHT-OF-WAY: Includes real estate appraisals, purchase cost of parcels, easements, right-of-entry permits, escrow fees, and tenant relocation.

UTILITY/AGENCY FORCE ACCOUNT: Includes work by outside agencies and utilities in design coordination and review.

CONTINGENCY: A fund established at the beginning of a project to provide for anticipated but unknown additional costs that may arise during the course of the project.

SPECIAL CONDITIONS: Includes utilities relocation, environmental compliance and mitigation, master cooperative agreements, insurance program, artwork, systems integration testing and pre-revenue operations.

APPENDIX
LIST OF ACRONYMS

AFE	Authorization For Expenditure
ATC	Automatic Train Control
CADD	Computer Aided Drafting and Design
CALTRANS	California Department of Transportation
CD	Calendar Day
CM	Construction Manager
CMAQ	Congestion Mitigation Air Quality
CN	Change Notice
CO	Change Order
CNFA	Concurrent Non-FFGA Project Activities
CPM	Critical Path Method
CPUC	California Public Utilities Commission
CR	Camera Ready
CTC	California Transportation Commission
CUD	Contract Unit Description
DB	Design/Build
DBB	Design/Bid/Build
DD	Design Development
DOT	Department of Transportation
DWP	Department of Water and Power
EIR	Environmental Impact Report
EIS	Environmental Impact Statement
EPBM	Earth Pressure Balance Machine
ESP	Eastside LRT Partners
FAR	Federal Acquisition Regulation
FD	Final Design
FEIS	Final Environmental Impact Statement
FEIR	Final Environmental Impact Report
FFGA	Full Funding Grant Agreement
FIS	Financial Information System
FSEIR	Final Supplemental Environmental Impact Report
FSEIS	Final Supplemental Environmental Impact Statement
FTA	Federal Transit Administration
FTE	Full Time Equivalent
GDSR	Geotechnical Design Summary Report
IFB	Invitation for Bid
IPO	Integrated Project Office
JV	Joint Venture
LA	Los Angeles
LABOE	Los Angeles Bureau of Engineering
LACFCD	Los Angeles County Flood Control District
LACMTA	Los Angeles County Metropolitan Transportation Authority
LADOT	Los Angeles Department of Transportation

APPENDIX
LIST OF ACRONYMS (Continued)

LADPW	Los Angeles Department of Public Works
LADWP	Los Angeles Department of Water and Power
LAUSD	Los Angeles Unified School District
LNTP	Limited Notice To Proceed
LONP	Letter Of No Prejudice
LRT	Light Rail Transit
LRTP	Long Range Transportation Plan
LRV	Light Rail Vehicle
MIS	Major Investment Study
MPSR	Monthly Project Status Report
N/A	Not Applicable
NEPA	National Environmental Protection Act
NPDES	National Pollution Discharge Elimination System
NTE	Not to Exceed
NTP	Notice To Proceed
OCIP	Owner-Controlled Insurance Program
P3	Primavera Project Planner® (scheduling software)
PC	Project Control
PE	Preliminary Engineering
PEER	Permit Engineering Evaluation Report
PGL	Pasadena Gold Line
PIP	Project Implementation Plan
PM	Project Manager
PMA	Project Management Assistance
PMIP	Project Management Implementation Plan
PMOC	Project Management Oversight Consultant
PMP	Project Management Plan (manual)
P&P	Policies & Procedures
PR	Project Report
PSR	Project Study Report
QA	Quality Assurance
QAR	Quality Assurance Report
QC	Quality Control
QPSR	Quarterly Project Status Report
RAC	Review Advisory Committee
RAG	Rail Activation Group
RFC	Request For Change
RFP	Request For Proposal
ROD	Record Of Decision
ROD	Revenue Operations Date
ROM	Rough Order of Magnitude

APPENDIX
LIST OF ACRONYMS (Continued)

ROW	Right-Of-Way
SCAQMD	Southern California Air Quality Management District
SCE	Southern California Edison
SCRRA	Southern California Regional Rail Authority
SHA	State Highway Account
SHPO	State Historic Preservation Office
SIT	System Integration Testing
SOV	Schedule Of Value
SOW	Statement Of Work
SP	Special Provision
STIP	State Transportation Improvement Program
STP	Surface Transportation Program
TBD	To Be Determined
TBM	Tunnel Boring Machine
TCRP	Traffic Congestion Relief Program
TPSS	Traction Power Substation
TRACS	Transit Automatic Control System
UFS	Universal Fare System
USDOT	U.S. Department Of Transportation
VE	Value Engineering
WBS	Work Breakdown Structure
WP	Work Package