

Metro Gold Line Eastside Extension



METRO GOLD LINE EASTSIDE EXTENSION

MONTHLY PROJECT STATUS REPORT

THE PREPARATION OF THIS DOCUMENT HAS BEEN FINANCED IN PART THROUGH A GRANT FROM THE U. S. DEPARTMENT OF TRANSPORTATION, FEDERAL TRANSIT ADMINISTRATION (FTA), UNDER THE FEDERAL TRANSIT ACT OF 1964, AS AMENDED, AND FUNDS FROM THE STATE OF CALIFORNIA.

JULY 2009

TABLE OF CONTENTS

	Page No.
Project Overview & Status.....	1-3
Management Issues.....	3
Project Status	
• Project Scope.....	4
• Schedule	
○ Key Milestones Six-Month Lookahead	5
○ Project Master Schedule Critical Path.....	6-7
○ Critical Path Narrative.....	8
• Project Cost Status.....	9-10
• Financial/Grant Status.....	11-12
• Staffing.....	13-15
• Real Estate.....	16
• Environmental.....	17
• Community Relations.....	17
• Quality Assurance.....	18
• Safety.....	18
• Art Development.....	18
• Third Party.....	19-20
• CPUC Crossing.....	21
Contract C0802 Status	22
Contract C0803 Status	23
Contract E700051F Status.....	24
Contract C0893 Status	25
Contract P2550 Status	26
Construction Photographs	27-29
Appendices.....	30-33

PROJECT OVERVIEW & STATUS

The Metro Gold Line Eastside Extension Project is a six-mile, dual track light rail system with eight new stations and one station modification. The system originates at Union Station in downtown Los Angeles, where it connects with the Pasadena Gold Line, traveling generally east to Pomona and Atlantic Boulevards. The system travels over the State Route 101 Freeway and traverses the existing 1st Street Bridge over the Los Angeles River. The system travels south on Alameda Street and then east on 1st Street with two stations at Alameda and Utah Streets. East of the Los Angeles River and 1st and Utah Streets, the alignment transitions to tunnel for approximately 1.7 miles, and continues beneath 1st Street to underground stations at 1st Street and Boyle Avenue and 1st Street and Soto Street. The alignment returns to the surface near the intersection of 1st Street and Lorena Streets, then jogs to the south, transitioning to follow 3rd Street with stations at Indiana Street, Ford Boulevard, Mednik Avenue and Pomona and Atlantic Boulevards.

Metro's consultant, ARINC, continued with integration of the new software for the expansion of the existing SCADA system. The consultant has completed the cutover plan and continues developing user and training manuals. Shipment to the Rail Operations Control Center (ROCC) of hardware and workstations in the original scope was completed this period and software downloads are proceeding per plan. The required additional equipment is currently going through factory acceptance tests and will be shipped to ROCC and installed next period. ARINC continued supporting Metro staff with Systems Integration Testing (SIT) Phase II.

The C0893 Atlantic/Pomona Parking Structure contractor, W. M. Klorman Corporation, is nearing completion of the final design. Metro staff reviewed the Approved for Construction (AFC) drawings and specifications and transmitted comments to the contractor. The contractor is preparing the conformed AFC documents for all design units. The critical structural AFC conformed package was approved by Metro this period.

The Division 21 Body Shop design consultant, Eastside LRT Partners, continued development of design documents and performance specifications. Metro staff reviewed the 100% design package and transmitted comments to the consultant. The consultant is preparing camera ready documents and Metro staff is preparing the bid package which will be available to bidders next period.

The C0803 contractor is nearing completion of the underground stations. At the Boyle Heights/Mariachi Plaza Station (MPS), the escalator/elevator supplier crews completed mounting elevator cab glass panels, continued installing escalator cladding and skirts, and began final adjustments in preparation for the state inspection next period. Doors were painted throughout the station and hardware mounted in place. Public safety handrails and guardrails were installed at the platform, mezzanine and mid-landing levels. The platform edge lights were wired and are fully operational. Installation of art pieces and directional signs continued throughout the station. In the Train Control and Communication (TC&C) room, as well as in the auxiliary power, emergency fans, mechanical and electrical rooms, the systems subcontractor continued connecting all wiring inside the Motor Control Centers (MCC), Communication Interface Cabinets (CIC) and Emergency Management Panels (EMP) necessary to support completion of station local testing. This period the erection of the station entrance canopy continued, landscaping began and paving at the plaza was completed.

PROJECT OVERVIEW & STATUS

At the Soto Station (SS), the escalator/elevator supplier crews continued mounting elevator cab glass panels, installing escalator cladding and skirts and performing final adjustments in preparation for the state inspection next period. Installation of public safety handrails and guardrails at the platform and mezzanine levels continue. Doors were painted throughout the station and hardware mounted in place. The platform edge lights were wired and are fully operational. Installation of art pieces continued throughout the station. Also, in the TC&C, auxiliary power, emergency fans, mechanical and electrical rooms, the systems subcontractor is nearing completion with the connections of all wiring inside the MCCs, CICs and EMPs. At the station entrance, installation of ceiling grid and panels began as well as placement of treads on stair # 1. At the station plaza area, landscaping began and erection of the station canopy above the entrance continues.

At-grade construction is proceeding according to plan. Street restoration has completed within the City of Los Angeles boundary. A punch list of remaining items has been completed and contractor crews began working toward completion of the items. In Segment 2B, at the Clearance crossover, contractor crews began removing embedded concrete to correct track insulation which is causing track circuit shorts that affect train motion.

Construction along 3rd Street (Segments 5, 6 and 7) has been completed. ELRTC began working on the final punch list prepared by the County of Los Angeles.

In other areas of the alignment, at-grade station construction is nearing completion. Installation of signs, bike racks and lockers continue at all locations. The systems subcontractor began installation of cross connectors between the SCADA cabinet and the Ticket Vending Machines at all stations. At Atlantic Station, field crews completed installation of the canopy metal cladding and furnishings at the operator's room. The canopy subcontractor continued fabrication of laminated glass panels for the Maravilla station and will begin delivery next period.

The testing phase of the project continues. The contractor continued local testing for auxiliary power transformers, the CICs and MCCs at all stations. The LFAT for communications and UPS equipment continued throughout the alignment. The LFAT for seismic and fire alarms, intrusion detection and gas detection in the underground portion of the alignment began this period. In the tunnels, ventilation testing under revised scenario requirements was successfully completed. The mechanical subcontractor began elevator testing this period.

The systems subcontractor continued with SIT Phase I. The following tests were performed this period: test I-006 B and C, emergency ventilation/EMP/PLC at Soto Station and the East Portal, respectively; tests I-010, I-011 and I-012, ancillary ventilation/EMP/PLC at both underground stations and the East Portal; tests I-013, Cross Passage fans; and test I-020, Cable Transmission System/SCADA. Testing coordination meetings with Metro have continued on a daily basis. ELRTC continues to submit test procedures and test reports.

PROJECT OVERVIEW & STATUS

Metro Operations continued with SIT Phase II. SCADA testing continued for Train Control and Traction Power systems throughout the alignment. The SCADA interface with all underground ventilation and UPS equipment began this period as well as the radio interface with ROCC.

Metro staff has reviewed and approved Contract C0893 Atlantic/Pomona Parking Structure construction work plans for the excavation support system, mass excavation and installation of CIDH piles and footings for the structure foundation. Construction crews completed mass excavation, began reconstruction of sewer manhole # 2, installed and poured foundation CIDH piles and began fabrication of rebar for pile caps and foundation footings.

Installation of the Universal Fare System (UFS) equipment continued this period by Robnett Electric, Inc., (REI) a subcontractor to the equipment vendor, Cubic, Inc. REI began preparations to perform Ticket Vending Machines (TVM) installation acceptance testing at the at-grade stations. At the underground stations, subcontractor crews prepared the areas where UFS equipment will be installed and prepared for delivery of UFS equipment.

The Metro Art Department continued providing technical support and coordination between the C0803 contractor and the artists responsible to provide art pieces for the eight stations. All art pieces have been delivered to the site and installation continues throughout all stations.

The Metro Communications Group in conjunction with AT&T began verification of telephone interface with the AT&T grid and began connecting 120V power in the TC&C rooms for phone enclosure lights.

The Metro Rail Activation Group completed identifying all the requirements necessary to obtain the Certificate of Occupancy. The group also completed testing at the ROCC. The training program for operators continues and train familiarization operations throughout the alignment were put on hold until the track circuit issues at the three embedded crossovers has been resolved. The group performed successfully the last emergency readiness drill, D-008 – train fire in the tunnels. Rail activation coordination meetings with the contractor have continued on a weekly basis.

MANAGEMENT ISSUES

No Management Issues for the period ending July 2009.

PROJECT SCOPE

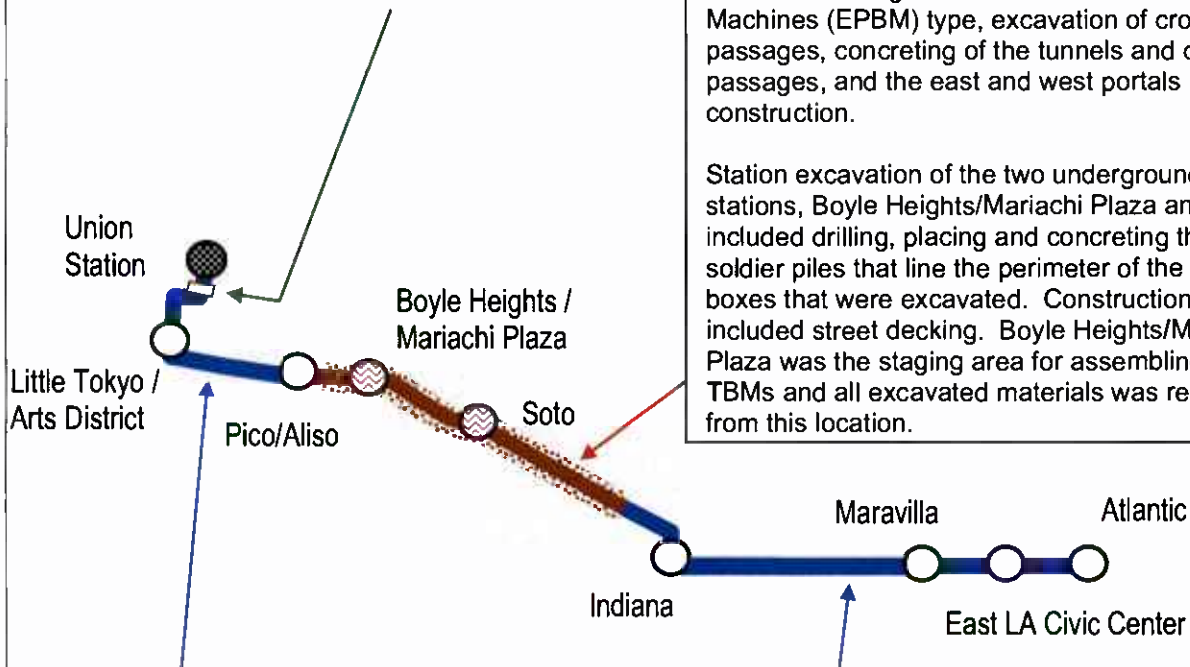
Contract C0802 – 101 Freeway Bridge

Overcrossing: The construction of the bridge was combined with Caltrans freeway improvements project. Caltrans administered the construction and the LACMTA provided oversight and was responsible for the construction costs of the bridge overcrossing.

Contract C0803 - Tunnel and Station

Excavation (Design/Bid/Build): Construction of the 1.7 mile tunnel segment included tunnel excavation using two Earth Pressure Balance Machines (EPBM) type, excavation of cross passages, concreting of the tunnels and cross passages, and the east and west portals construction.

Station excavation of the two underground stations, Boyle Heights/Mariachi Plaza and Soto, included drilling, placing and concreting the soldier piles that line the perimeter of the station boxes that were excavated. Construction also included street decking. Boyle Heights/Mariachi Plaza was the staging area for assembling the TBMs and all excavated materials was removed from this location.



Contract C0803 - Stations, Trackwork, and Systems (Design/Build): Construction of the two underground stations includes structural walls, station platforms, mezzanines, station entrances, and plazas, architectural finishes and all related mechanical and electrical work.

Construction of the six-mile alignment includes six at-grade stations, trackwork installation and testing for the entire alignment.

Systems installation and testing is inclusive of power systems, automatic train control, fire and emergency management, TRACS and communications systems. The contractor will be responsible for systems integration testing for the entire line segment prior to pre-revenue operations.

Metro Gold Line Eastside Extension
Monthly Project Status Report

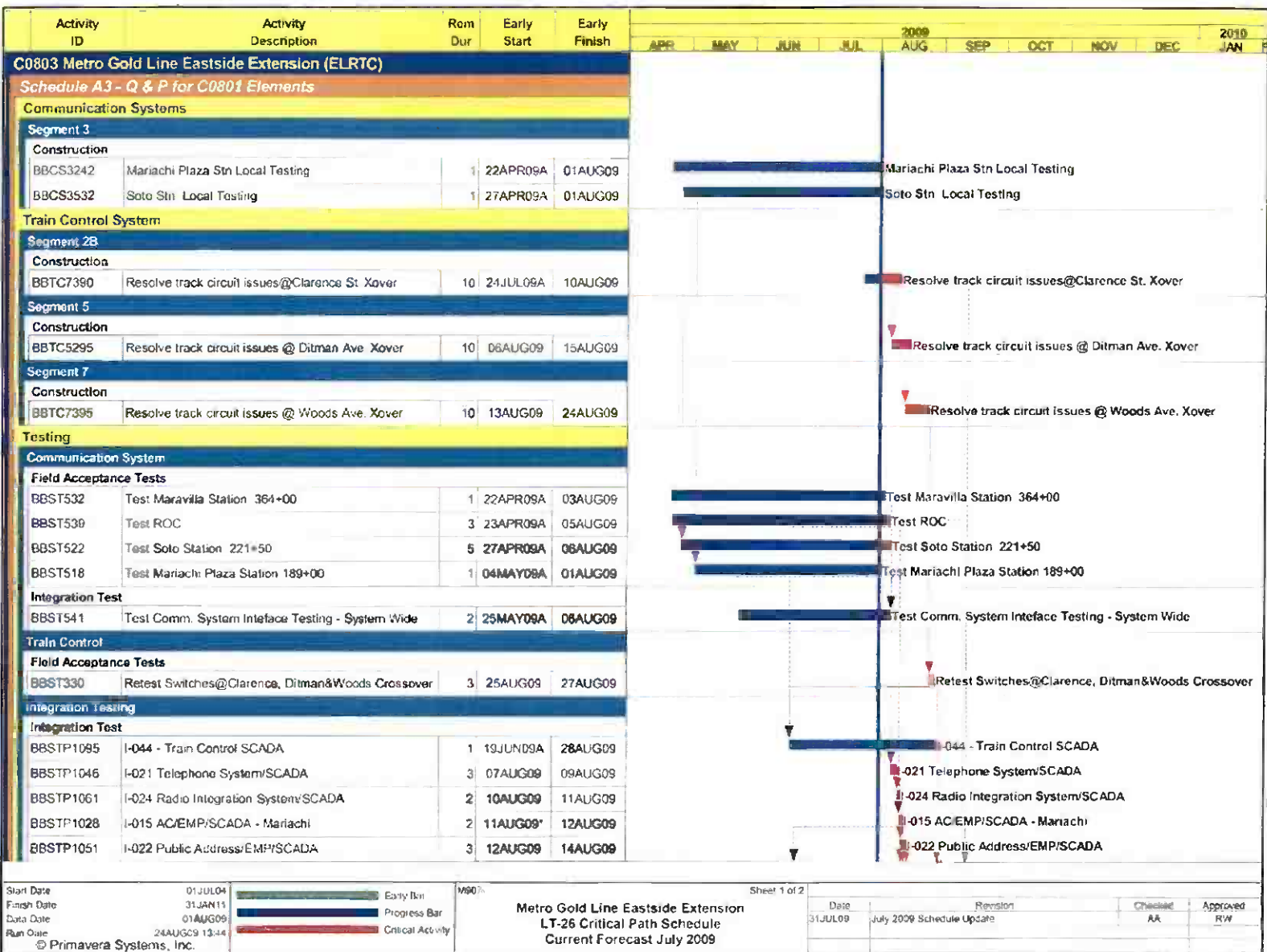
July 2009

KEY MILESTONE SCHEDULE SIX-MONTH LOOKAHEAD

	Milestone Date	Jul-09	Aug-09	Sep-09	Oct-09	Nov-09	Dec-09
Installed Tunnel Portal Surveillance System	07/17/09 *	○					
Completed Landscape at Both Portals	07/29/09 *	○					
Completed Fabrication and Delivery of Metro Art	07/31/09	◆					
Submit All Testing Procedures	08/06/09 *		○				
Complete Final Design for the Pomona/Atlantic Parking Structure	08/11/09 *		■				
Advertise Contract C0933 LRV Body Shop at Division 21	08/25/09 *		◆				
Complete At-Grade Stations Canopy Installation	08/26/09 *		○				
Complete Underground Station Construction	08/28/09 *		○				
C0803 Contractor Achieve Substantial Completion	08/28/09 *		○				
Complete At-Grade Station Construction	08/28/09 *		○				
Complete Systems Integration Testing Phase I (ELRTC)	08/28/09 *		○				
Complete Pomona/Atlantic Parking Structure Foundation	09/03/09			■			
Metro Submit to the CPUC Application to Obtain the Certificate of Occupancy	09/11/09 *			◆			
Begin Pre-Revenue Operations	09/12/09 *			◆			
Install Universal Fare System Throughout the Alignment	09/14/09 *			◆			
Complete Installation of Public Phones Throughout the Alignment	09/14/09			◆			
Complete Systems Integration Testing Phase II (Metro)	09/26/09 *			◆			
C0803 Contractor Complete Demobilization and Vacate Site (Milestone # 5)	10/02/09 *				○		
Award Contract C0933 LRV Body Shop at Division 21	11/16/09 *					◆	
Issue NTP - Contract C0933 LRV Body Shop at Division 21	12/09/09 *						◆
<div> <div>◆ LACMTA Staff Milestone</div> <div>○ Eastside LRT Constructors</div> <div>FTA</div> <div>FTA Approval</div> <div>■ W. M. Klorman</div> </div> <div> <div>△ Other Agencies</div> <div>* New Date</div> <div>M Metro</div> <div>LACMTA Board Approval</div> </div>							

Six-month lookahead schedule for Contract C0803 reflects the contractor's current CPM schedule.

PROJECT MASTER SCHEDULE CRITICAL PATH (1 of 2)



PROJECT MASTER SCHEDULE CRITICAL PATH (2 of 2)



CRITICAL PATH NARRATIVE

Current Critical Path Analysis

The C0803 contractor (ELRTC) continues with the Local Field Acceptance Test (LFAT) program as well as Systems Integration Testing (SIT) throughout the alignment. The systems subcontractors successfully re-tested the entire ventilation system at underground facilities under modified scenarios. Cable splicing and wire terminations at the Train and Communication Control (T&CC), auxiliary power, and emergency fans, mechanical and electrical rooms continued. The Supervisory Control and Data Acquisition System (SCADA) interface, which is Metro's responsibility, is operational on a limited basis pending the final download from ARINC, the system vendor for SCADA.

There are two overlapping critical paths in the current schedule: one is through completion of additional track insulation at the three embedded crossovers, which is necessary to resolve track circuit shorts. The other is through completion of communications installation and testing at the underground stations, local facilities testing throughout the alignment before entering the final test stage, where SIT and Pre-Revenue Operations are conducted.

As a result of the safety peer review panel findings, Metro and ELRTC staff are working on cost and schedule proposals for several safety enhancement modifications to the Project, including installation of additional pylon delineators between rail right-of-way and auto traffic, and installation of barriers between tracks to deter jaywalking. Preparation of a Metro Board report began this period and it will be presented at the September Board Meeting. The revised forecast date for Revenue Operations is yet to be determined.

PROJECT COST STATUS

COST REPORT BY ELEMENT ORIGINAL SCOPE ACTIVITIES DOLLARS IN THOUSANDS

ELEMENT	DESCRIPTION	ORIGINAL BUDGET	CURRENT BUDGET		COMMITMENTS		EXPENDITURES		CURRENT FORECAST		BUDGET / FORECAST VARIANCE
			PERIOD	TO DATE	PERIOD	TO DATE	PERIOD	TO DATE	PERIOD	TO DATE	
C	CONSTRUCTION	633,221	-	650,702	781	659,492	9,561	625,354	-	650,702	-
S	SPECIAL CONDITIONS	19,494	-	57,032	619	51,171	1,464	42,951	-	57,032	-
R	RIGHT-OF-WAY	40,358	-	37,681	-	37,779	-	37,048	-	37,681	-
P	PROFESSIONAL SERVICES	135,304	-	135,860	3,445	138,163	1,107	128,875	-	135,860	-
PC	PROJECT CONTINGENCY	60,254	-	7,401	-	-	-	-	-	7,401	-
PR	PROJECT REVENUE	(4,617)	-	(4,662)	-	(4,662)	-	(4,662)	-	(4,662)	-
	SUBTOTAL	884,014	-	884,014	4,845	881,943	12,133	829,567	-	884,014	-
PF	PROJECT FINANCE COST	14,800	-	14,800	(993)	6,810	(993)	6,810	-	14,800	-
	TOTAL	898,814	-	898,814	3,852	888,753	11,140	836,377	-	898,814	-

NOTE: EXPENDITURES ARE CUMULATIVE THROUGH JUNE 2009

PROJECT COST ANALYSIS

Original Budget

The Full Funding Grant Agreement (FFGA) was adopted June 1, 2004 in the amount of \$898.8 million. The Original Budget reflects the adopted FFGA.

Current Budget and Current Forecast

The Current Budget and Forecast remain the same at \$898.8 million.

Commitments

The Commitments increased by \$3.9 million this period primarily for executed modifications associated with Contract C0803 – Tunnel, Stations, Trackwork & Systems and the FY10 Metro Board approved budgets. In the Project Finance Cost element there was a decrease of \$1.0 million that reflects interest income received. The \$888.8 million in Commitments to date represents 98.9% of the Original Budget.

Expenditures

Expenditures are cumulative through June 2009. The Expenditures increased by a total of \$11.1 million this period. In the Construction element there was an increase of \$9.6 million for costs associated with Contract C0803 -Tunnel, Stations, Trackwork and Systems and the Light Rail Vehicles. In the Special Conditions element there was an increase of \$1.5 million primarily for costs associated with Third Party Master Cooperative Agreements with the City of LA, Metro Systems Integration Oversight/Pre-Rev Ops, SCADA, and Metro Art Program. In the Professional Services element there was an increase of \$1.1 million primarily for costs associated with Metro Project Administration, Design Support During Construction, Construction Management Services, and vehicle consultants. In the Project Finance Cost element there was a decrease of \$1.0 million that reflects interest income received. The expenditures for this period are higher than usual due to the posting of both the May 2009 and June 2009 invoices for Contract C0803 in the Metro's Financial Information System (FIS). The \$836.4 million in Expenditures to date represents 93.1% of the Original Budget.

PROJECT COST STATUS

COST REPORT BY ELEMENT CONCURRENT NON-FPGA PROJECT ACTIVITIES DOLLARS IN THOUSANDS

ELEMENT	DESCRIPTION	ORIGINAL BUDGET	CURRENT BUDGET		COMMITMENTS		EXPENDITURES		CURRENT FORECAST		BUDGET / FORECAST VARIANCE
			PERIOD	TO DATE	PERIOD	TO DATE	PERIOD	TO DATE	PERIOD	TO DATE	
C	CONSTRUCTION	18,000	-	46,034	10	44,965	847	34,919	-	46,034	-
S	SPECIAL CONDITIONS	-	-	3,244	-	2,660	33	2,455	-	3,244	-
R	RIGHT-OF-WAY	-	-	648	-	349	6	27	-	648	-
P	PROFESSIONAL SERVICES	-	-	3,914	227	3,649	302	2,677	-	3,914	-
PC	PROJECT CONTINGENCY	-	-	1,650	-	-	-	-	-	1,650	-
PR	PROJECT REVENUE	-	-	(4,087)	-	(5,096)	-	(279)	-	(4,087)	-
SUBTOTAL		18,000	-	51,403	238	46,527	1,189	39,799	-	51,403	-
PF	PROJECT FINANCE COST	-	-	-	-	-	-	-	-	-	-
TOTAL		18,000	-	51,403	238	46,527	1,189	39,799	-	51,403	-

NOTE: EXPENDITURES ARE CUMULATIVE THROUGH JUNE 2009

PROJECT COST ANALYSIS

Original Budget

The Metro Board adopted the Original Budget of \$18.0 million on March 24, 2005.

Current Budget and Current Forecast

The Current Budget and Forecast remain the same at \$51.4 million.

Commitments

The Commitments increased by \$0.2 million this period to reflect the FY10 Metro Board approved budgets. The \$46.5 million in Commitments to date represents 90.5% of the Current Budget.

Expenditures

Expenditures are cumulative through June 2009. The Expenditures increased by \$1.2 million this period for costs associated with the construction of the Pomona/Atlantic Parking Structure, East LA Civic Center canopy, Project Administration, and Community Relations. The expenditures for this period are higher than usual due to the posting of both the May 2009 and June 2009 invoices for Contract C0803 in the Metro's Financial Information System (FIS). The \$39.8 million in Expenditures to date represents 77.4% of the Current Budget.

FINANCIAL/GRANT STATUS – ORIGINAL SCOPE ACTIVITIES

JULY 2009

STATUS OF FUNDS BY SOURCE

SOURCE	(A) ORIGINAL BUDGET	(B) TOTAL FUNDS ANTICIPATED	(C) TOTAL FUNDS AVAILABLE	(D) COMMITMENTS \$	(D/B) %	(E) EXPENDITURES \$	(E/B) %	(F) BILLED TO FUNDING SOURCE \$	(F/B) %
FEDERAL - SECTION 5309 NEW START	\$490.700	\$490.700	\$481.117	\$488.653	100%	\$436.277	89% (1)	\$430.831	88%
FED - SECTION 5309 FIXED GUIDEWAY	\$23.100	\$12.000	\$12.000	\$12.000	100%	\$12.000	100%	\$12.000	100%
FEDERAL - CMAQ	\$10.300	\$10.300	\$10.276	\$10.276	100%	\$10.276	100%	\$10.276	100%
REGIONAL IMPROVEMENT PROG - FED	\$179.600	\$4.600	\$4.600	\$4.600	100%	\$4.600	100%	\$4.600	100%
REGIONAL IMP PROG - STATE	\$0.600	\$175.600	\$175.600	\$175.600	100%	\$175.600	100%	\$175.600	100%
STATE TCRP	\$45.000	\$45.000	\$45.000	\$45.000	100%	\$45.000	100%	\$45.000	100%
PROP A 35% / PROP C 40%/PROP 25%	\$124.614	\$135.714	\$135.714	\$135.714	100%	\$135.714	100%	\$135.714	100%
LEASE REVENUES	\$10.100	\$10.100	\$10.100	\$10.100	100%	\$10.100	100%	\$10.100	100%
ACCRUALS									
SUB-TOTAL	\$884.014	\$884.014	\$874.407	\$881.943	100%	\$829.567	94%	\$824.121	93%
PROP A / PROP C (INTEREST COST)	\$14.800	\$14.800	\$7.803	\$6.810	46%	\$6.810	46%	\$6.903	47%
TOTAL	\$898.814	\$898.814	\$882.210	\$888.753	99%	\$836.377	93%	\$831.024	92%

NOTE: EXPENDITURES ARE CUMULATIVE THROUGH JUNE 2009.

STATUS OF FUNDS ANTICIPATED

FEDERAL SECTION 5309 NEW STARTS: LACMTA has received an appropriation of \$333.6M through FY08. LACMTA submitted a grant application for \$33.4M in January 2009. The grant was approved on April 1, 2009. Funds are available for drawdown. LACMTA submitted in June 2009 the remainder of the FY09 grant application for \$47.4M. The grant was approved on July 29, 2009 and funds are available for drawdown. LACMTA also submitted in June 2009, as part of the American Reinvestment and Recovery Act of 2009, a grant application of \$66.7M in advance of incoming future federal funds. The grant was approved on July 10, 2009 and funds are available for drawdown.

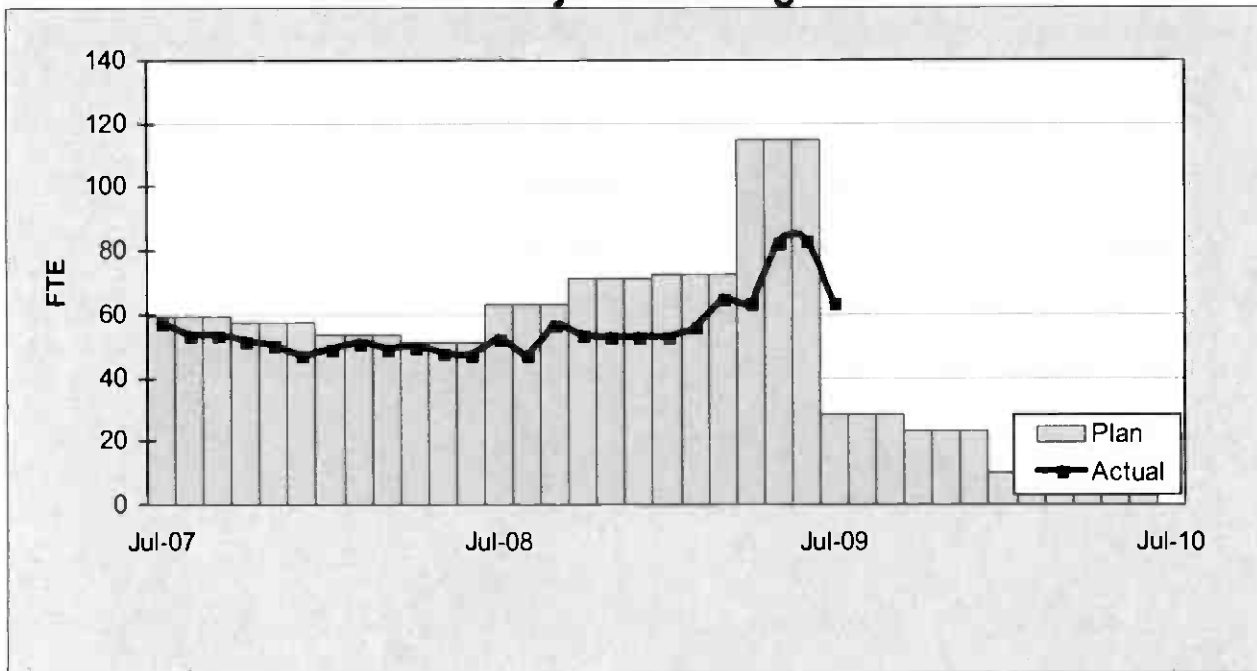
FINANCIAL/GRANT STATUS
CONCURRENT NON-FFGA PROJECT ACTIVITIES

JULY 2009		STATUS OF FUNDS BY SOURCE							
SOURCE	(A) APPROVED BUDGET	(B) TOTAL FUNDS ANTICIPATED (1)	(C) TOTAL FUNDS AVAILABLE	(D) COMMITMENTS \$	(D/B) %	(E) EXPENDITURES \$	(E/B) %	(F) BILLED TO FUNDING SOURCE \$	(F/B) %
PROP C 40%	\$14.000	\$22.400	\$22.400	\$20.481	91%	\$15.715	70%	\$10.228	46%
PROP C 10%	\$4.000	\$4.300	\$4.300	\$1.960		\$0.001		\$0.001	
STATE TCR	\$0.000	\$24.086	\$24.086	\$24.086	100%	\$24.083	100%	\$24.083	100%
PROP A 35%	\$0.000	\$0.617	\$0.617	\$0.000	0%	\$0.000	0%	\$0.000	0%
TOTAL	\$18.000	\$51.403	\$51.403	\$46.527	91%	\$39.799	77%	\$34.312	67%

NOTE: EXPENDITURES ARE CUMULATIVE THROUGH JUNE 2009.

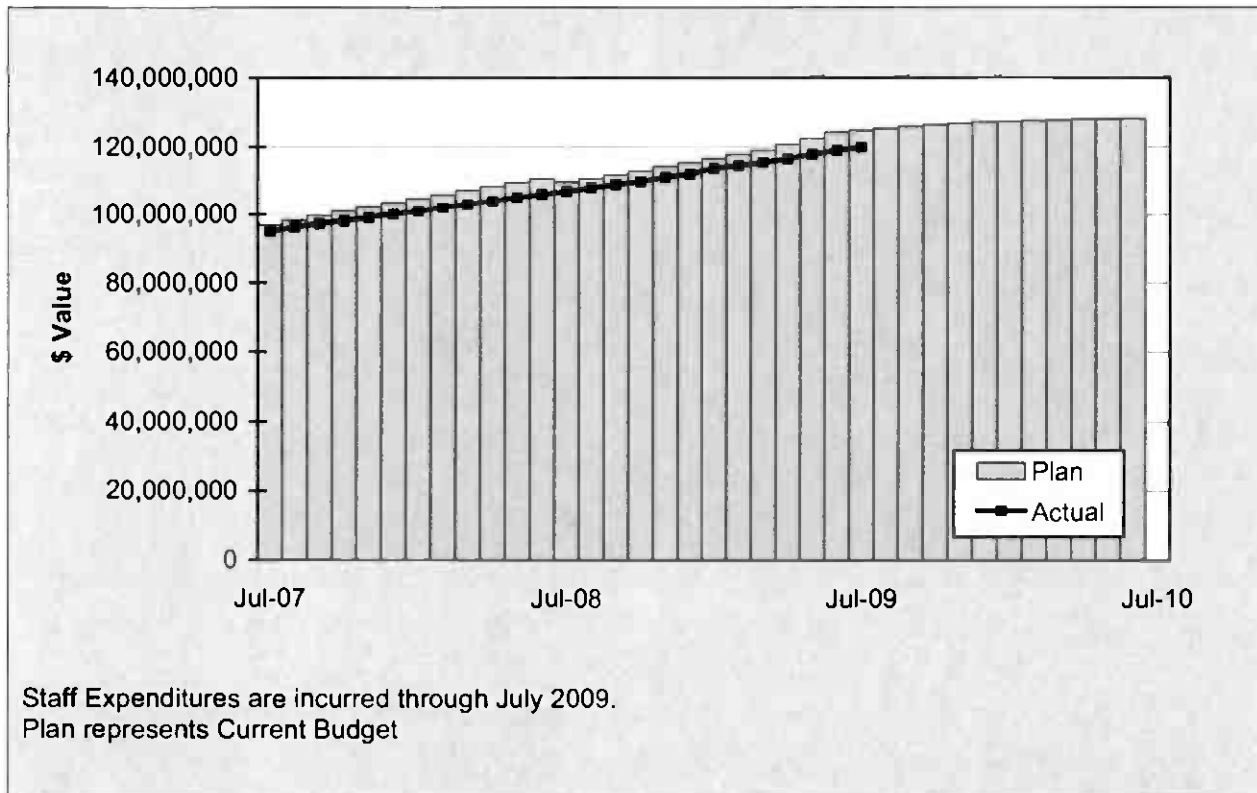
STAFFING STATUS

Total Project Staffing - FTES



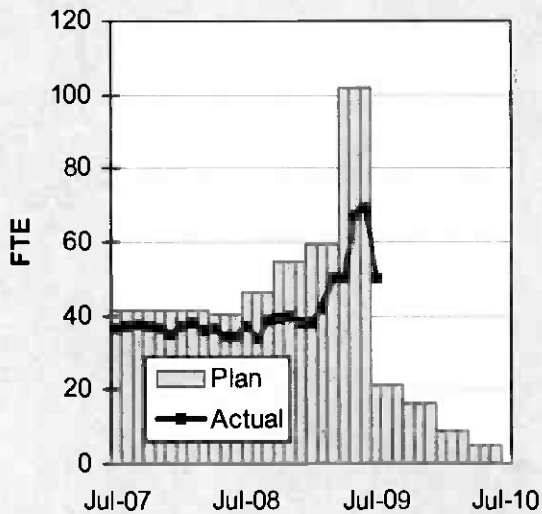
STAFFING STATUS

TOTAL PROJECT STAFFING COST

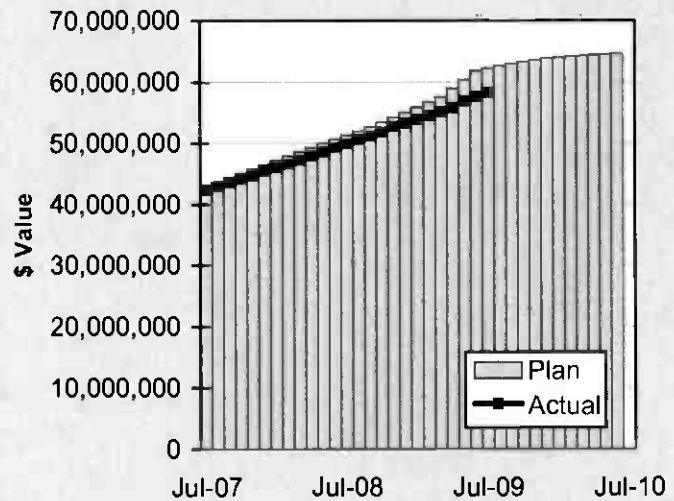


STAFFING STATUS

DIRECT AGENCY - FTES

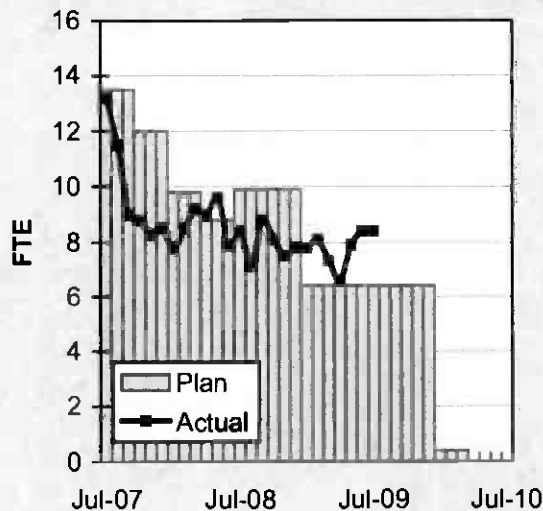


DIRECT AGENCY - COST

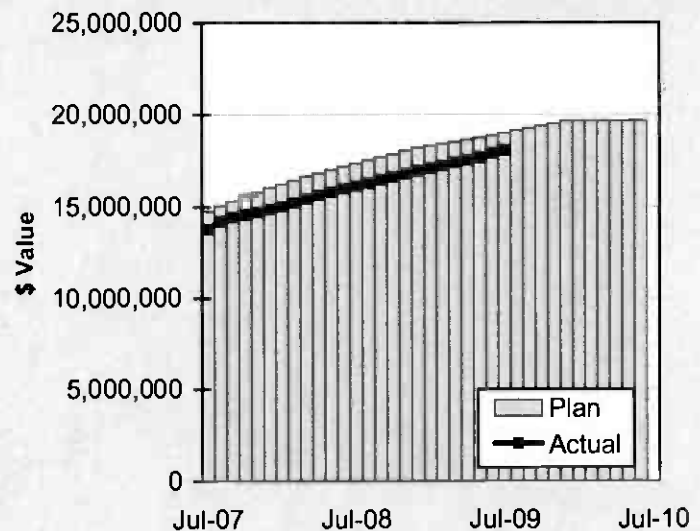


Staff Expenditures are incurred through July 2009.
Plan represents Current Budget

CONSTRUCTION MGMT – FTES



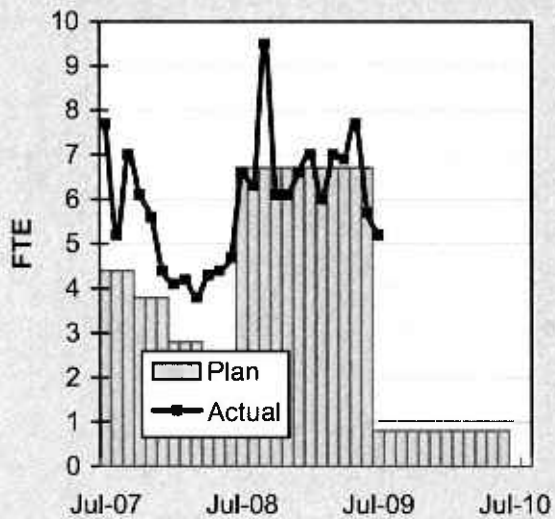
CONSTRUCTION MGMT - COST



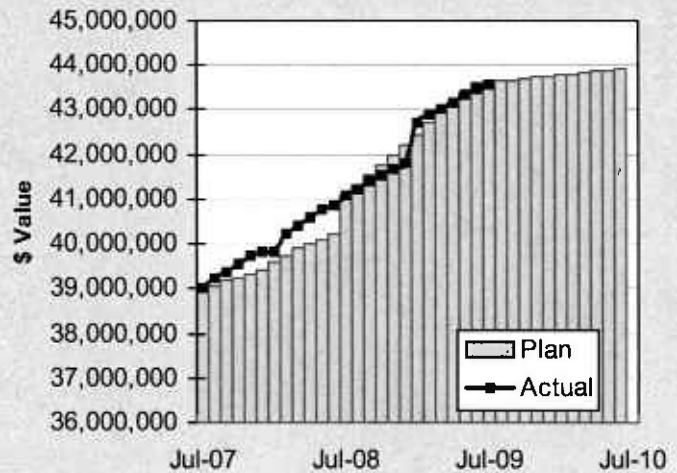
Staff Expenditures are incurred through July 2009.
Plan represents Current Budget.

STAFFING STATUS

ELRT PARTNERS - FTES



ELRT PARTNERS - COST



Staff Expenditures are incurred through July 2009.
Plan represents Current Budget

REAL ESTATE STATUS

- For C0803, the tunnel portion of the alignment, 40 parcels were required for acquisition (11 full takes, 4 partial takes, 20 sub-surface easements/temporary construction easements, 3 sub-surface easements/building protection, and 2 building protections).
- For C0803, the at-grade portion of the alignment, 27 parcels were required for acquisition (17 full takes, 9 partial takes and 1 surface easement). Nine parcels were required for the LAUSD Ramona Opportunity High School site reconfiguration.
- For C0802, 2 parcels were required (1 surface easement and 1 full take parcel).
- Two Encroachment Permits were obtained from Caltrans for the C0803-Tunnel. Three street closures were obtained from the City of LA.

REAL ESTATE ACQUISITION SCHEDULE SUMMARY

<i>Number of Parcels</i>	Required	Acquired	On Schedule	Behind Schedule	
				Number	Avg. Calendar Days
This Period	69	69	0	0	0
Last Period	69	69	0	0	0

REAL ESTATE STATUS TO DATE BY CONTRACT ACQUISITION PHASE

CONTRACT NO.	Number of Parcels (A+B+C+D+E)	Agreements Signed (A)	Parcels in Condemnation (B)	Under Negotiation (C)	In Appraisal Process (D)	Inactive Parcels (E)	Parcels Available
C0803-Tunnel	40	40	0	0	0	0	40
C0803-At-Grade	27	27	0	0	0	0	27
C0802	2	2	0	0	0	0	2
TOTAL	69	69	0	0	0	0	69
LAST PERIOD	69	69	0	0	0	0	69

ENVIRONMENTAL STATUS

- Metro Communications is assisting in the inscriptions of the Chinese characters for individual markers.
- Continued the installation of the bronze plaques at Evergreen Cemetery. Center plaques, headstones and enamel figures have been installed. The copy for the two side plaques have been completed and submitted to the foundry for fabrication.
- Benches, urns and stella have been ordered.

COMMUNITY RELATIONS STATUS

- Construction activities are now contained to the work zone. No construction notices were sent out.
- Met with two residents/business owners to coordinate driveway improvements.
- Provided construction updates at the Executive and Review Advisory Committee Meetings.
- Supported the East LA Chamber of Commerce Taste of East LA.

QUALITY ASSURANCE STATUS

- Continued to review the Design Builder's Monthly Asphalt, Concrete Compressive Strength and Soils Compaction test report summaries - areas of concern are coordinated to resolution with the onsite lab representative.
- Conducted verification testing of Design Builder's special inspections utilizing an independent testing laboratory technician; no issues to report.
- Monitored Pomona/Atlantic parking structure activities.

SAFETY STATUS

- Participated in weekly progress meetings with Construction Managers and ELRTC management personnel to discuss safety related issues and the construction schedule.
- Participated in ELRTC's weekly supervisory Tool Box safety meetings.
- Monitored construction activities on a daily basis, including weekends, to ensure safety compliance with Contract Specification.
- ELRTC and their subcontractors reported zero incidents and 75,389 work hours for the month of July 2009. A total of forty-two (41) recordable incidents have occurred Project to Date. Total Project to Date work hours are 4,239,782. Injury Rates for Recordable incidents are 2.0; well below the published incident rate of 5.3 for recordable cases.

ART DEVELOPMENT STATUS

- Coordination meetings were held with Metro Construction and ELRTC for artwork fabrication/installation schedules for eight stations.

THIRD PARTY AGREEMENT STATUS

Thrd Party	Type of Agreement	Forecast Execution Date	Required Need Date	Status/ Comments
City of Los Angeles	Amendment	Completed	N/A	Executed December 2002.
Los Angeles County	Master	Completed	N/A	Executed April 2003.
Caltrans (All Projects)	Master	Completed	N/A	Executed July 2003.
Caltrans (101)	Design	Completed	N/A	Executed July 2003.
Caltrans (101)	Construction	Completed	N/A	Executed September 2003.
Caltrans (101)	Maintenance	8/09	Project Completion	The initial negotiation meeting was held on 1/9/03. LACMTA received a draft from Caltrans on 1/22/04. LACMTA reviewed and submitted the agreement to Caltrans on 2/10/04. A follow up call was made on 10/20/05 but no response to date.
LADWP (Water/Power)	Amendment	8/09	*6/04	LACMTA Management, County Counsel, and LACMTA Board staff have participated in meetings with DWP to complete negotiations, since the "Deadline and Delay" clause is not acceptable to LADWP. Alternative language was forwarded to LACMTA Management and County Counsel for review on 10/7/05. LACMTA CEO is to speak with LADWP CEO.
So. Cal. Edison Co.	Amendment	N/A	N/A	SCE Executive Legal Branch stated on 2/25/05 they have no intention of signing agreement.
The Gas Company	Amendment	Completed	N/A	Executed May 2005.
SBC/AT & T	Amendment	Completed	N/A	Executed May 2005. SBC has been acquired by AT&T and has formed a new corporation TCM for work in Southern California. A new agreement has been negotiated with Metro and TCM, which was approved by the Metro Board in April. The new agreement mirrors the SBC agreement except for some minor changes in the insurance language.
Adelphia Cable Company	Amendment	8/09	*6/04	LACMTA received a draft from Adelphia for review. LACMTA Management and County Counsel reviewed the amendment and returned the document to Adelphia with comments. Adelphia's Legal Department is reviewing the document and follow-up calls were made on 10/20/05 and 11/16/05.
Calif Wtr Service Co	Master	Completed	N/A	Executed May 2005.
L.A. County Sanitation Districts	N/A	N/A	N/A	In a letter dated 3/26/03, the Sanitation District stated that there is not a need for an agreement since there are no relocations related to their facilities. The Sanitation District will review submittals related to encasements of their facilities on Indiana Street.
MCI Worldcom	Amendment	Completed	N/A	Executed May 2005.
Metropolitan Wtr Dist	Amendment	Completed	N/A	Executed May 2003.

THIRD PARTY AGREEMENT STATUS

Third Party	Type of Agreement	Forecast Execution Date	Required Need Date	Status/ Comments
Verizon Wireless	Amendment	8/09	*6/04	The revised draft amendment was hand delivered to Verizon on 11/19/03 and an electronic copy was sent to them 2/19/04. Verizon did respond with comments, which were reflected in a revised agreement sent 4/05. Verizon legal is completing final review. Follow up calls were made on 10/20/05 and 11/16/05. Verizon has now joined MCI and once the legal work is complete in late February 2006, LACMTA may be able to use the MCI Agreement for Verizon work. E-mailed MCI Agreement to Verizon Representative for consideration as overall agreement covering Verizon and MCI as the new Verizon.
GST	N/A			Facilities are not impacted by Eastside Construction
Exxon Mobil Oil Company	N/A			Facilities are not impacted by Eastside Construction
Pacific Pipeline Company	N/A			Facilities are not impacted by Eastside Construction
Kinder Morgan Pipeline Company	N/A			Facilities are not impacted by Eastside Construction
Tosco Refining Company	N/A			Facilities are not impacted by Eastside Construction
Equilon Pipeline Company	N/A			Facilities are not impacted by Eastside Construction
Level 3 Communications	N/A			Facilities are not impacted by Eastside Construction
Broadwing Communications	N/A			Facilities are not impacted by Eastside Construction
Eller Media	N/A			Facilities are not impacted by Eastside Construction

* Work has been performed under the current MCA.

Metro Gold Line Eastside Extension Monthly Project Status Report

July 2009

CPUC CROSSING SUMMARY

Batch	Application Status	Initial Package Submittal to MTA	Field Diagnostic Meeting	Revised Drawings Due to MTA	Draft Write-up to MTA	Draft Package Sumbittal to PUC Local office and Agencies	Final Package Submittal to PUC	CPUC Final Approval
1	Complete	8/5/02	8/12/02	8/26/02	9/6/02	9/6/02	9/6/2002	Approved
2	Complete	10/4/02	10/11/02	10/25/02	11/6/02	11/22/02	11/22/2002	Approved
3	Complete	2/6/03	2/27/03	3/10/03	1/27/03	4/11/02	4/18/2003	Approved
4	Complete	12/14/02	1/15/03	1/29/03	11/13/02	5/5/03	6/18/2003	Approved
4A	Complete	1/24/03	1/29/03	3/14/03	2/7/03	9/5/03	1/23/2004	Approved
6	Complete	3/19/03	3/26/03	6/20/03	2/7/03	9/5/03	9/12/2003	Approved
7	Complete	12/11/02	12/18/02	3/31/03	2/7/03	5/5/03	7/25/2003	Approved
8	Complete	11/26/02	12/18/02	3/31/03	11/15/02	6/6/03	5/21/2004	Approved
9	Complete	1/20/03	1/29/03	3/31/03	11/22/02	8/29/03	9/12/2003	Approved
10	Complete	12/11/03	12/18/02	3/10/03	11/22/02	5/5/03	8/29/2003	Approved
11	Complete	2/13/03	2/27/03	4/18/03	12/6/02	6/6/03	8/29/2003	Approved
12	Complete	2/13/03	2/27/03	4/18/03	12/13/02	6/6/03	9/5/2003	Approved
13	Complete	2/6/03	2/20/03	4/18/03	2/21/03	6/6/03	9/1/2004	Approved
14	Complete	1/8/03	1/15/03	3/14/03	11/12/02	8/29/03	10/30/2003	Approved
15	Complete	2/26/03	N/A	N/A	2/21/03	6/6/03	8/29/2003	Approved
16	Complete	2/26/03	N/A	N/A	2/28/03	6/6/03	8/29/2003	Approved
17	Complete	1/8/03	1/15/03	N/A	2/14/03	5/5/03	6/13/2003	Approved
18	Complete	1/8/03	1/15/03	3/20/03	2/14/03	5/5/03	6/13/2003	Approved
Agency Responsible		ELRTP	MTA	ELRP	ELRTP	MTA	MTA	

Batch No. 5 has been removed, as the Midway Yard will be utilized.

SHADED AREAS REPRESENTS COMPLETION

All applications are approved.

Batch Descriptions			
1	1st / Alameda	10	3rd / Ford
2	Alameda / Temple		3rd / McDonnel
	1st / Hewitt	11	3rd / Arizona
	Ped Crossings @ 1st / Alameda Station		3rd / Mednik
3	1st / Vignes		3rd / Civic Center Drive
4	1st / Lorena		3rd / La Verne
4A	Indiana/1st	12	3rd / Driveways to Sherriff's Station
	Indiana/3rd		3rd / Wood / Via Corona / Pomona / Beverly
	Indiana Pedestrian Crossing	13	3rd / 60 Fwy WB Connector
6	1st / Mission		3rd / 60 Fwy over ELRT
	1st / Anderson		3rd / 710 Fwy SW Connector
	1st / Clarence		3rd / Bridge over 710 Fwy
	1st / Utah	3rd / 710 Fwy SE Connector	
	1st/Gless Pedestrian Crossing	14	Union Station Service Road
		15	1st / Santa Fe
7	3rd / Rowan		1st / Myers
8	3rd / Gage	16	1st / MTA
	3rd / 60 Fwy WB Ramps		1st / BNSF
	3rd /Downey		1st / Union Pacific

CONTRACT C0802 STATUS

Description: 101 Freeway Bridge Overcrossing Contractor: Brutoco Engineering & Construction		Contract No. C0802 Status as of: July 31, 2009					
Progress/Work Completed: * Bridge work was completed in March 2007 * Plant Maintenance period achieved November 2007 Areas of Concern: * None		Major Activities (In Progress): * None Major Activities Next Period: * None					
Schedule Summary: Date of Award: 09/07/04 Notice to Proceed: 09/22/04 Original Contract Duration: 700 CD Current Contract Duration: 775 CD Elapsed Time from NTP: 904 CD * * Note: Elapsed time to Milestone # 1 completion			Original Contract Dates	Time Extension	Current Contract	Forecast	Variance COs
		Notice to Proceed	09/22/04	0	09/22/04	09/22/04	0
		Milestone 1 - Complete Abutment No. 10	06/26/06	49	08/14/06	03/15/07	-213
		Milestone 2- Complete All Work Without Plant Establishment	08/23/06	75	11/06/06	08/06/07	-273
Physical Percent Complete: Physical completion ** as of this reporting period is: 100.00% ** Note: Physical completion assessment reflects work completed and invoice amount shown in Caltrans Monthly Progress/Expense Report No. 30.		Cost Summary: \$ In millions 1. Award Value: 6.42 2. Executed Modifications: 0.00 3. Approved Change Orders: 0.00 4. Current Contract Value (1+2+3): 6.42 5. Incurred Cost: 6.42					

CONTRACT C0803 STATUS

Description: Tunnel, Stations, Trackwork & Systems Contractor: Eastside LRT Constructors	Contract No. C0803 Status as of: July 31, 2009					
Progress/Work Completed: <ul style="list-style-type: none">* Canopy installation at Mariachi Plaza Station (MPS) and Soto Station (SS) entrance* Plaza paving and lighting at MPS and SS* Installed platform edge lights and VMS signs at MPS and SS* Painted doors at MPS, SS and Portals* Installed seismic, gas, fire suppression and intrusion detection devices at all facilities* Placed landscaping at above-grade stations* Installed canopy gutters at above-ground stations* Completed conductor's room at Atlantic Station* Tested tunnels cross-passage fans* Performed Traction Power pull away test* Completed Communications cable transmission test I-020* Performed readiness drill D-008 - train fire in the tunnels* Provided Fire Protection equipment and O&M manual training to Metro operators and maintenance personnel Areas of Concern: <p>The contractor has slipped completion of Milestone # 1 by 149 calendar days. Completion of systems Local Field Acceptance Testing (LFAT) as well as Systems Integration Testing (SIT) are preventing the start of the project pre-revenue operations and ROD. The contractor is pursuing every avenue to minimize further delay. However, at this time, the project ROD date is uncertain due to lack of system reliability and some safety issues that need attention.</p>	Major Activities (In Progress): <ul style="list-style-type: none">* Canopy lighting at MPS and SS entrance* Cable and wire terminations at MPS and SS* Escalators and elevators at MPS and SS* Architectural finishes at MPS and SS* Entrance ceiling grids and panels at MPS and SS* Landscaping at MPS and SS* Art panels and supports at all stations* Canopy glass roof at Maravilla Station* Canopy lighting at above-ground stations* Electrical and mechanical local field testing throughout the alignment* Systems Integration Testing (SIT) throughout the alignment Major Activities Next Period: <ul style="list-style-type: none">* Test roll up doors at MPS and SS* Test elevators and escalators at MPS and SS* Complete canopies at MPS and SS* Canopy glazing and laminated glass at East Los Angeles Civic Center Station* Install Public Telephones at MPS and SS* Test fire alarm, seismic, gas and intrusion detection systems* Test the SCADA system* Complete Fire Department inspections* Final punch list items throughout the alignment* Begin Pre-revenue operations					
Schedule Summary: Date of Award: 06/01/04 Notice to Proceed: 07/01/04 Original Contract Duration: 1795 CD Current Contract Duration: 1887 CD Elapsed Time from NTP: 1857 CD Option D Contract duration 90 CD Complete		Original Contract Dates	Time Extension	Current Contract	Forecast	Variance CDs
	Notice to Proceed	07/01/04	0	07/01/04	07/01/04	0
	Milestone 1 - Contract Completion. Complete all systems integration testing and ready for MTA's pre-revenue operation testing.	12/31/08	91	04/01/09	08/28/09	-149
	Milestone 3 - Complete Universal Fare System Equipment area.	04/30/08	255	01/10/09	01/30/09	-20
	Milestone 5 - Vacate all staging areas and turn over to MTA.	05/30/09	92	08/30/09	10/02/09	-33
	Milestone 6 - Complete design and construction of Option D work.	09/28/04	0	09/28/04	09/28/04	0
Physical Percent Complete: Physical completion * as of this reporting period is: 99.13% * Note: Physical completion assessment reflects work completed and work in progress.	Cost Summary: \$ In millions 1. Award Value: 600.45 2. Executed Modifications: 16.79 3. Approved Change Orders: 0.01 4. Current Contract Value (1+2+3): 617.25 5. Incurred Cost: 601.70					

Description: 1st Street Bridge Strengthening Contractor: The Griffith Company		Contract No. E700051F Status as of: July 31, 2009					
Progress/Work Completed: * Bridge turned over to Metro on October 26, 2007		Major Activities (In Progress): * None					
Areas of Concern: * None		Major Activities Next Period: * None					
Schedule Summary:			Original Contract Dates	Time Extension	Current Contract	Forecast	Variance COs
Date of Award: 01/19/07 Notice to Proceed: 02/06/07		Notice to Proceed	02/06/07	0	02/06/07	02/06/07	0
Original Contract Duration: 251 CD Current Contract Duration: 281 CD Elapsed Time from NTP: 281 CD		Milestone 1 - Substantial Completion	10/15/07	30	11/14/07	11/14/07	0
Physical Percent Complete:		Cost Summary: \$ In millions					
Physical completion as of 11/14/07: 100.00% *		1. Award Value: * 4.26 2. Executed Modifications: 0.00 3. Approved Change Orders: 0.05 4. Current Contract Value (1+2+3): 4.31 5. Incurred Cost: 4.31					
* As reported by the City of Los Angeles, Department of Contract Administration		* City of Los Angeles					

CONTRACT C0893 STATUS

Description: Pomona Atlantic Parking Structure Contractor: W. M. Klorman Construction Corp.		Contract No. C0893 Status as of: July 31, 2009					
Progress/Work Completed: * Submitted for review Approved for Construction (AFC) design submittal * Submitted for review Construction Work Plans (CWP) for lagging waterproofing, structure foundation and manhole # 2 reconstruction * Installed lagging - included waterproofing * Completed mass excavation * Installed 112 CIDH piles for structure foundation * Submitted for approval foundation pile caps and grade beams reinforcing shop drawings Areas of Concern: * None		Major Activities (In Progress): * Conform and stamp AFC design drawings * Coordination meetings with the design team * Construction Work Plans (CWP) for shear walls and columns * Trench shoring for manhole # 2 reconstruction * Sewer line manhole # 2 demolition * Install area "A" reinforcing for structure foundation Major Activities Next Period: * Complete structure foundation * Begin slab on grade construction * Begin shear walls and columns at ground level * Contract and construction submittals * Begin fabrication of elevator, mechanical and security equipment					
Schedule Summary: Date of Award: 12/15/08 Notice to Proceed: 01/14/09 Original Contract Duration: 400 CD Current Contract Duration: 400 CD Elapsed Time from NTP: 199 CD			Original Contract Dates	Time Extension	Current Contract	Forecast	Variance CDs
		Notice to Proceed	01/14/09	0	01/14/09	01/14/09	0
		Milestone 1 - Substantial Completion	02/18/10	0	02/18/10	02/18/10	0
Physical Percent Complete: Physical completion as of 7/31/09: 17.2% * * Note: Physical completion assessment reflects work completed and work in progress.		Cost Summary: 1. Award Value: 8.15 2. Executed Modifications: 0.00 3. Approved Change Orders: 0.00 4. Current Contract Value (1+2+3): 8.15 5. Incurred Cost: 2.22					

CONTRACT P2550 STATUS

Description: 2550 Rail Vehicle Program Contractor: AnsaldoBreda, Italy (AB)		Contract No. P2550 Status as of: July 31, 2009		
Progress/Work Completed: 1. As of July 31, 2009 twenty-six vehicles have been accepted by MTA and one other vehicle is undergoing testing for acceptance in August. 2. Vehicle final assembly work continues in Pittsburg, CA. 3. Shipment of foreign and domestic parts for final assembly continue to arrive in Pittsburg, CA. 4. Several Engineering meetings with AB and its subcontractors have been held during the period to evaluate progress and to close open items. 5. Vehicle No. 707 is the next vehicles to be accepted. Areas of Concern: With arrival of new vehicles from Pittsburg to Los Angeles, available vehicle storage space at Gold Line Shop/Yard is a concern as it affects vehicle movement in the yard. A total of twenty-seven cars are at the Metro Green Line. The remainder of cars will be shipped to the Metro Gold Line for testing and acceptance. Delays may occur as a result of change in testing location.		Major Activities (In Progress): 1. AnsaldoBreda's manufacturing plants in Pistoia and Naples, Italy continue to prepare carshells and subassemblies for shipment to U.S.A. Pittsburg plant continues vehicle assembly work. 2. Testing of Vehicle 707 is ongoing in Los Angeles for next vehicle acceptance. 3. Daily/weekly project meetings are held to close open items. Major Activities Next Period: 1. Several Technical Progress meetings will be held to emphasize the urgency of resolution of remaining critical items for final acceptance of vehicles. 2. Car 707 will continue final testing for Conditional Acceptance in August 2009. 3. Future cars will be shipped to the Metro Green Line. To date three cars have been shipped to the Metro Green Line (731, 732 & 733).		
			Quantity	Contract Total Quantity
Schedule Summary: Date of Award: 04/24/03 Notice to Proceed: 06/06/03 Original Contract Duration: 1442 CD Elapsed Time from NTP: 2193 CD Note: A schedule of vehicle delivery has been submitted by AB with 50th (last) car delivered by July 2010. Metro has extended the expiration date of the options to September 30, 2009 at Board direction.		Notice to Proceed 6/6/2003A		
		Vehicles Assembled (in US)	42	50
		LRV at Commissioning Site - MGD	27	50
		LRV at Commissioning Sites - MGL/MBL	3	
		LRV Accepted for Revenue Service by Metro	26	50
Physical Percent Complete: Percent of LRVs assembled = $42/50 = 84\%$ Percent Work Product Invoiced through July 2009 is 61%		Cost Summary: \$ In millions 1. Award Value: Pasadena (Proj. No.: 800151) 126.99 Eastside Ext. (Proj. No.: 800088) 31.75 Total Award Value 158.74 2 Executed Modifications 0.00 3 Approved Change Orders: 0.00 4 Current Contract Value (1 + 2 + 3): 158.74 5 Payments or invoices in process: 96.85		

CONSTRUCTION PHOTOGRAPHS



Light rail vehicle traveling over the 101 Freeway Bridge Overcrossing.



Tour given to US Transportation Secretary and US Congressional Members.

CONSTRUCTION PHOTOGRAPHS



View of mezzanine entrance at Boyle Heights/Mariachi Plaza Station.

CONSTRUCTION PHOTOGRAPHS



View of guideway looking north from Indiana Station.



View looking west of Pico/Aliso Station.

APPENDIX

COST AND BUDGET TERMINOLOGY

ESTIMATED PROJECT COSTS: Estimated project costs are based upon the current project cost estimates that are produced during the engineering design phase.

COMMITMENTS: The total of actual contract awards, executed change orders or amendments, approved work orders of Master Cooperative Agreements, offers accepted for purchase of real estate, and other LACMTA actions that will result in specific expenditures at a future time.

INCURRED COST: The total value of work performed to date of services received, and acquired materials or properties.

EXPENDITURES: The total dollar amount of checks written by the LACMTA's Accounting department for contractor or consultant invoices, third party invoices, staff salaries, and closing payments for escrow accounts that is reported in the LACMTA's Financial Information System (FIS).

CONSTRUCTION: Includes guideways, yards and shops, systems equipment, stations, and vehicles.

PROFESSIONAL SERVICES: Includes general engineering, construction management services, consultant design support services during construction, legal counsel, and agency (LACMTA staff) costs.

RIGHT-OF-WAY: Includes real estate appraisals, purchase cost of parcels, easements, right-of-entry permits, escrow fees, and tenant relocation.

UTILITY/AGENCY FORCE ACCOUNT: Includes work by outside agencies and utilities in design coordination and review.

CONTINGENCY: A fund established at the beginning of a project to provide for anticipated but unknown additional costs that may arise during the course of the project.

SPECIAL CONDITIONS: Includes utilities relocation, environmental compliance and mitigation, master cooperative agreements, insurance program, artwork, systems integration testing and pre-revenue operations.

APPENDIX
LIST OF ACRONYMS

AFE	Authorization For Expenditure
ATC	Automatic Train Control
CADD	Computer Aided Drafting and Design
CALTRANS	California Department of Transportation
CD	Calendar Day
CM	Construction Manager
CMAQ	Congestion Mitigation Air Quality
CN	Change Notice
CO	Change Order
CNPPA	Concurrent Non-FFGA Project Activities
CPM	Critical Path Method
CPUC	California Public Utilities Commission
CR	Camera Ready
CTC	California Transportation Commission
CUD	Contract Unit Description
DB	Design/Build
DBB	Design/Bid/Build
DD	Design Development
DOT	Department of Transportation
DWP	Department of Water and Power
EIR	Environmental Impact Report
EIS	Environmental Impact Statement
EPBM	Earth Pressure Balance Machine
ESP	Eastside LRT Partners
FAR	Federal Acquisition Regulation
FD	Final Design
FEIS	Final Environmental Impact Statement
FEIR	Final Environmental Impact Report
FFGA	Full Funding Grant Agreement
FIS	Financial Information System
FSEIR	Final Supplemental Environmental Impact Report
FSEIS	Final Supplemental Environmental Impact Statement
FTA	Federal Transit Administration
FTE	Full Time Equivalent
GDSR	Geotechnical Design Summary Report
IFB	Invitation for Bid
IPO	Integrated Project Office
JV	Joint Venture
LA	Los Angeles
LABOE	Los Angeles Bureau of Engineering
LACFCD	Los Angeles County Flood Control District
LACMTA	Los Angeles County Metropolitan Transportation Authority
LADOT	Los Angeles Department of Transportation

APPENDIX
LIST OF ACRONYMS (Continued)

LADPW	Los Angeles Department of Public Works
LADWP	Los Angeles Department of Water and Power
LAUSD	Los Angeles Unified School District
LNTP	Limited Notice To Proceed
LONP	Letter Of No Prejudice
LRT	Light Rail Transit
LRTP	Long Range Transportation Plan
LRV	Light Rail Vehicle
MIS	Major Investment Study
MPSR	Monthly Project Status Report
N/A	Not Applicable
NEPA	National Environmental Protection Act
NPDES	National Pollution Discharge Elimination System
NTE	Not to Exceed
NTP	Notice To Proceed
OCIP	Owner-Controlled Insurance Program
P3	Primavera Project Planner® (scheduling software)
PC	Project Control
PE	Preliminary Engineering
PEER	Permit Engineering Evaluation Report
PGL	Pasadena Gold Line
PIP	Project Implementation Plan
PM	Project Manager
PMA	Project Management Assistance
PMIP	Project Management Implementation Plan
PMOC	Project Management Oversight Consultant
PMP	Project Management Plan (manual)
P&P	Policies & Procedures
PR	Project Report
PSR	Project Study Report
QA	Quality Assurance
QAR	Quality Assurance Report
QC	Quality Control
QPSR	Quarterly Project Status Report
RAC	Review Advisory Committee
RAG	Rail Activation Group
RFC	Request For Change
RFP	Request For Proposal
ROD	Record Of Decision
ROD	Revenue Operations Date
ROM	Rough Order of Magnitude

APPENDIX
LIST OF ACRONYMS (Continued)

ROW	Right-Of-Way
SCAQMD	Southern California Air Quality Management District
SCE	Southern California Edison
SCRRA	Southern California Regional Rail Authority
SHA	State Highway Account
SHPO	State Historic Preservation Office
SIT	System Integration Testing
SOV	Schedule Of Value
SOW	Statement Of Work
SP	Special Provision
STIP	State Transportation Improvement Program
STP	Surface Transportation Program
TBD	To Be Determined
TBM	Tunnel Boring Machine
TCRP	Traffic Congestion Relief Program
TPSS	Traction Power Substation
TRACS	Transit Automatic Control System
UFS	Universal Fare System
USDOT	U.S. Department Of Transportation
VE	Value Engineering
WBS	Work Breakdown Structure
WP	Work Package