

LEGEND

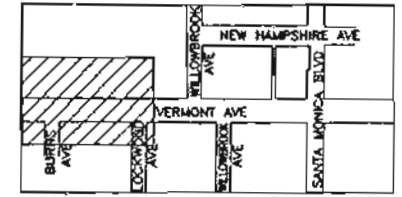
- PM. PARKING METER
- WM. WATER METER
- WV. WATER VALVE
- WH. WATER HANDHOLE
- FH. FIRE HYDRANT
- TSPB. TRAFFIC SIGNAL PULLBOX
- TSCB. TRAFFIC SIGNAL CONTROL BOX
- SLPB. STREET LIGHT PULLBOX
- LS. LIGHT STANDARD
- TS. TRAFFIC SIGNAL
- PP. POWER POLE
- PS. PARKING SIGN
- NPS. NO PARKING SIGN
- SS. STOP SIGN
- GM. GAS METER
- GV. GAS VALVE
- GH. GAS HANDHOLE
- SMH. SEWER MANHOLE
- SDMH. STORM DRAIN MANHOLE
- PMH. POWER MANHOLE
- LAYMH. LOS ANGELES WATER MANHOLE
- TMH. TELEPHONE MANHOLE
- TC. TOP OF CURB
- DC. DEPRESSED CURB
- FL. FLOW LINE
- EW. EDGE OF WALK
- BW. BACK OF WALK
- EC. EDGE OF CONCRETE
- PAVT. PAVEMENT
- TW. TREE WELL
- DR. DRAIN
- LG. LIP OF GUTTER
- CP. CONTROL POINT
- FS. FINISH SURFACE
- FCE. FENCE
- NG. NATURAL GRADE
- HCR. HANDICAPPED RAMP
- LP. LIGHT POLE

BASIS OF BEARINGS

THE BASIS OF BEARINGS WAS TAKEN FROM THE CALIFORNIA STATE COORDINATE SYSTEM, ZONE 7.

BENCH MARK

BENCH MARK = BRASS CAP AT SE COR. CB. MELROSE & MADISON AT SE RETURN LA SURVEY P.B.M. 12 - 18249 (1975 ADJ.)



KEY PLAN

NOTES:

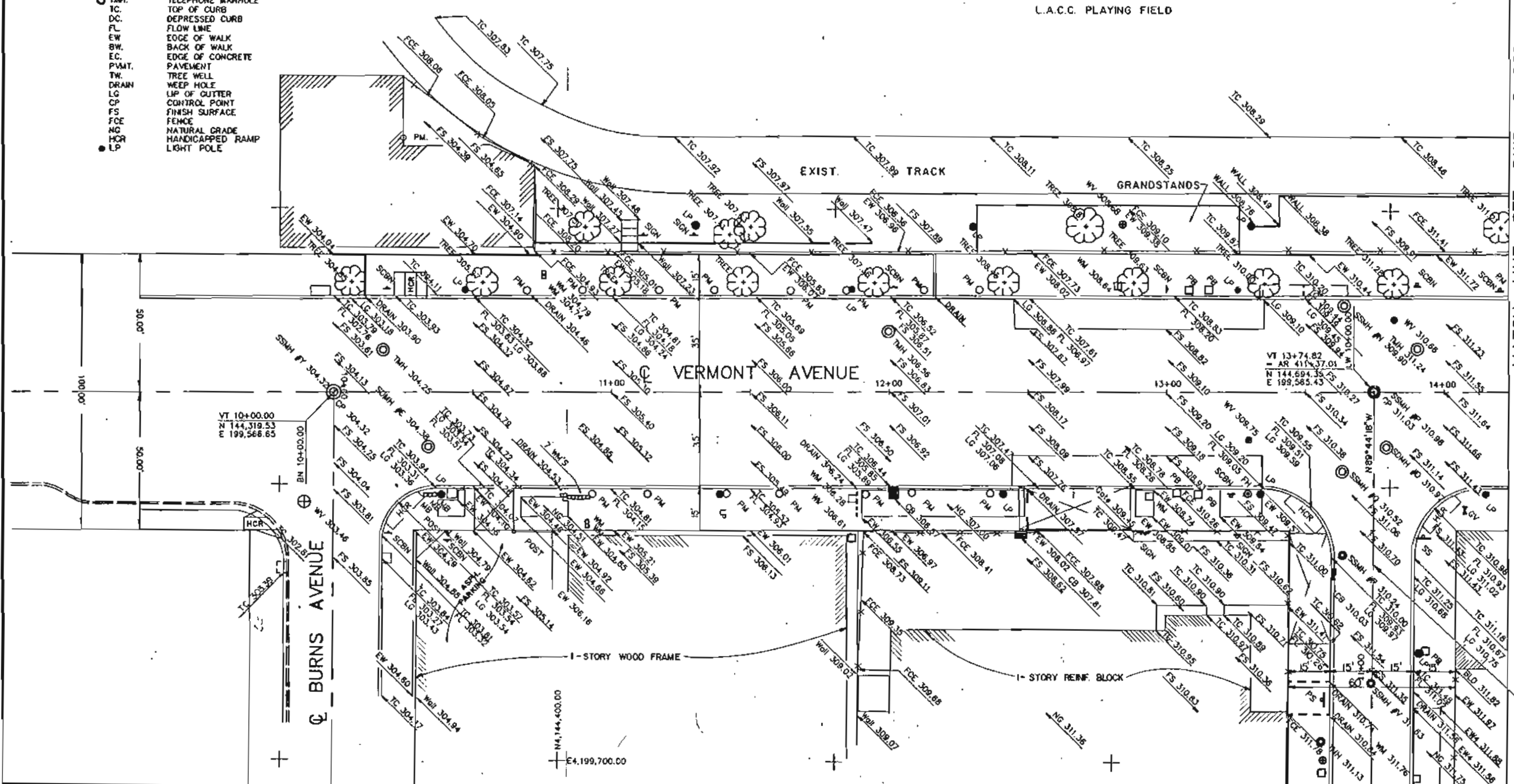
1. FOR ABBREVIATIONS & SYMBOLS, SEE DWG. NO. CS-002A
2. FOR ADDITIONAL ABBREVIATIONS, SEE DWG. NO. C-016
3. FOR SANITARY SEWER & STORM DRAIN MANHOLE INFORMATION SEE SHEET G-009

N 4,144,200.00

-E 4,199,400.00

N 4,144,700.00

-E 4,199,400.00



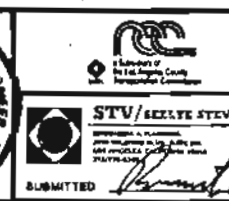
MATCH LINE SEE DWG. G-009

LOCKWOOD AVENUE

REV	DATE	BY	SUB	APP	DESCRIPTION
0	4.9.93				ISSUED FOR BID

THE PREPARATION OF THIS DRAWING HAS BEEN FINANCED IN PART THROUGH A GRANT FROM THE U.S. DEPARTMENT OF TRANSPORTATION, URBAN MASS TRANSPORTATION ADMINISTRATION, UNDER THE URBAN MASS TRANSPORTATION ACT OF 1964, AS AMENDED, AND IN PART BY THE TAXES OF THE CITIZENS OF LOS ANGELES COUNTY AND OF THE STATE OF CALIFORNIA.

DESIGNED BY
DRAWN BY
CHECKED BY
IN CHARGE
DATE 1 FEB. 93



Rail Construction Corporation
METRO RED LINE

STV/KEELY STEVENSON VALDE & ENKCHT.
METRO RAIL TRANSIT CONSULTANTS

LA. CBD TO NORTH HOLLYWOOD
VERMONT/SANTA MONICA STATION
EXISTING SURFACE CONDITIONS 1

CONTRACT NO	B 252
DRAWING NO	G-008
SCALE	1" = 20'
SHEET NO	9

SANITARY SEWER MANHOLE INFORMATION			
MH No.	TOP OF RIM	FLOW LINE	COORDINATES
A	332.16	24" W 313.30	4145461.293, 4199563.080
		24" NE 313.38	
		12" N 314.66	
B	332.12	24" W 313.67	4145422.429, 4199591.056
		15" S 313.50	
		12" N 313.60	
C	337.90	12" N 320.46	4145746.883, 4199562.142
		12" S 320.36	
		BOTTOM 325.90	4145486.229, 4199372.825
D	332.08	12" N 296.48	4145489.199, 4199563.066
		12" S 296.38	
		8" W 302.80	
F	330.86	8" W 296.90	
		12" N 320.86	4145259.402, 4199563.607
		12" S 320.58	
G	328.43	12" N 309.38	4145259.402, 4199563.607
		12" S 309.30	
		12" N 301.06	4144954.051, 4199564.588
H	317.70	12" N 301.06	4144954.051, 4199564.588
		12" E 300.95	
		18" N 310.28	4145325.297, 4199592.298
I	327.67	18" N 310.28	4145325.297, 4199592.298
		18" S 310.17	
		12" N 303.96	4145064.362, 4199564.110
J	320.74	12" N 303.96	4145064.362, 4199564.110
		12" S 303.90	
		8" E 304.47	
K	317.50	12" N & S 301.25	4144947.340, 4199564.967
		18" N 298.71	4144928.680, 4199593.481
		18" S 298.60	
L	316.28	12" NW 299.19	
		12" N 298.71	
		BOTTOM 309.90	4144954.133, 4199530.336
M	309.90	18" N 294.85	4144883.450, 4199534.185
		18" E 294.72	
		12" N 300.35	4144944.089, 4199533.527
O	316.85	12" N 300.35	4144944.089, 4199533.527
		12" S 300.10	
		8" W	
P	310.96	8" NW 308.40	
		12" N 296.71	4144694.294, 4199565.393
		12" S 296.69	
Q	310.52	18" N 294.73	4144682.912, 4199594.29
		18" W 294.61	
		18" E 294.42	
R	310.24	18" W 294.48	4144683.090, 4199624.579
		18" E 294.40	
		12" N 311.13	4144952.075, 4199244.693
S	321.36	15" W 311.09	
		18" E 310.96	
		18" W 300.80	4144943.455, 4199458.52
T	317.53	18" W 300.80	4144943.455, 4199458.52
		18" E 300.74	
		18" S 284.41	
U	299.94	18" N 284.54	4143944.509, 4199567.810
		18" S 284.41	
		18" E 284.68	
V	311.83	BOTTOM 306.00	4144693.818, 4199670.869
		18" W 306.40	4144941.952, 4199239.631
		18" E 306.30	
X	322.88	8" W 314.58	4145063.759, 4199695.784
		8" E 314.71	
		12" N 290.86	4144310.333, 4199566.605
Y	304.32	12" S 290.56	
		12" E 290.77	

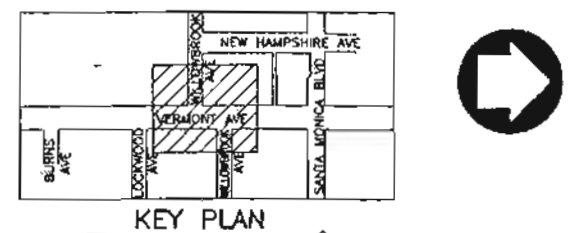
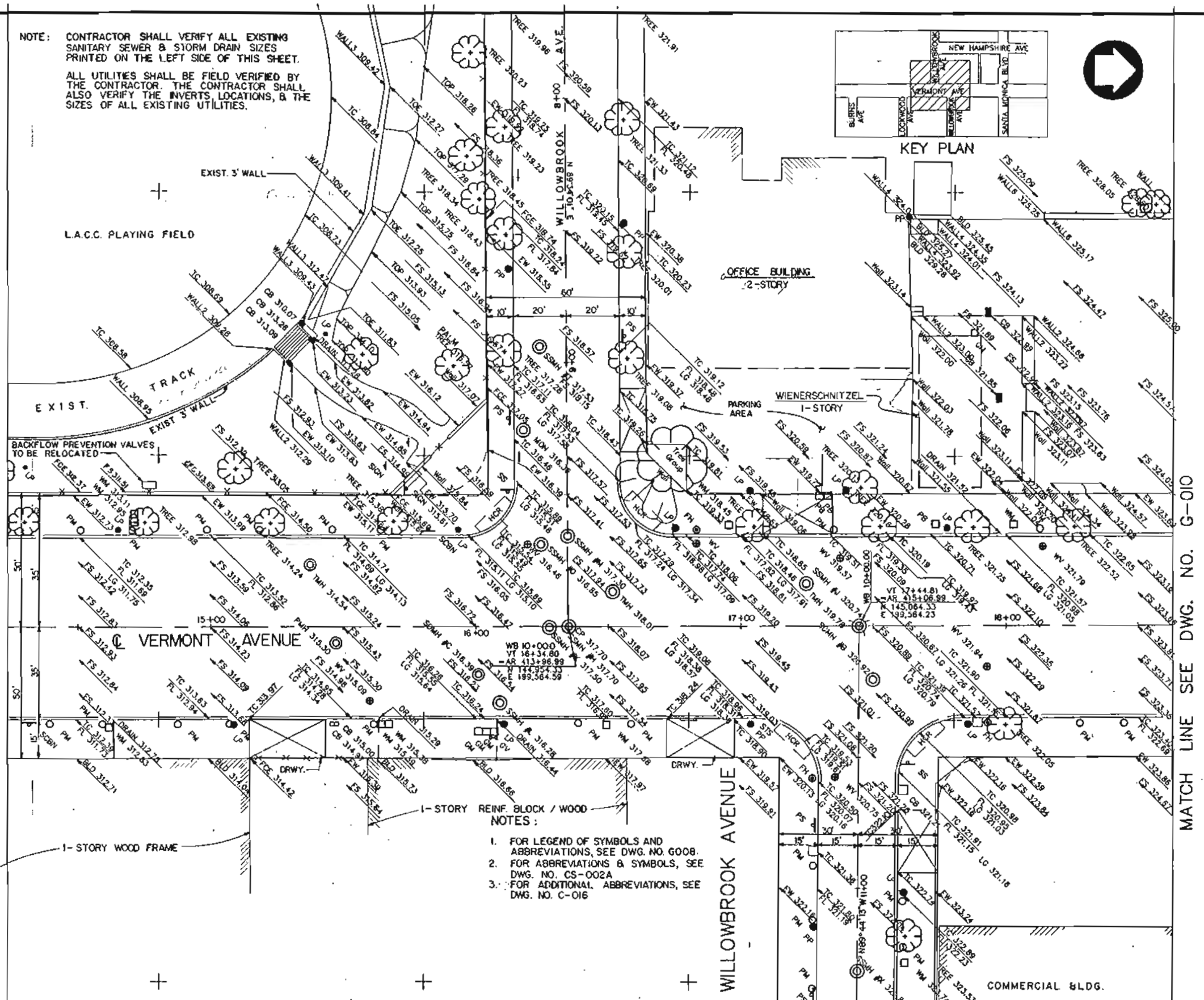
STORM DRAIN MANHOLE INFORMATION			
MH No.	TOP OF RIM	FLOW LINE	COORDINATES
A	342.44	48" N & S 330.28	4146015.641, 4199568.190
		18" E 330.74	
B	320.92	48" N & S 307.79	4145069.57, 4199584.454
		48" N & S 304.07	4144920.546, 4199582.745
D	310.97	48" N & S 300.32	4144698.820, 4199585.47
		48" N & S 294.68	4144353.55, 4199586.337
G	300.01	48" N & S 289.11	4143975.914, 4199587.593

NOTE: CONTRACTOR SHALL VERIFY ALL EXISTING SANITARY SEWER & STORM DRAIN SIZES PRINTED ON THE LEFT SIDE OF THIS SHEET.

ALL UTILITIES SHALL BE FIELD VERIFIED BY THE CONTRACTOR. THE CONTRACTOR SHALL ALSO VERIFY THE INVERTS, LOCATIONS, & THE SIZES OF ALL EXISTING UTILITIES.

MATCH LINE SEE DWG. NO. G-008

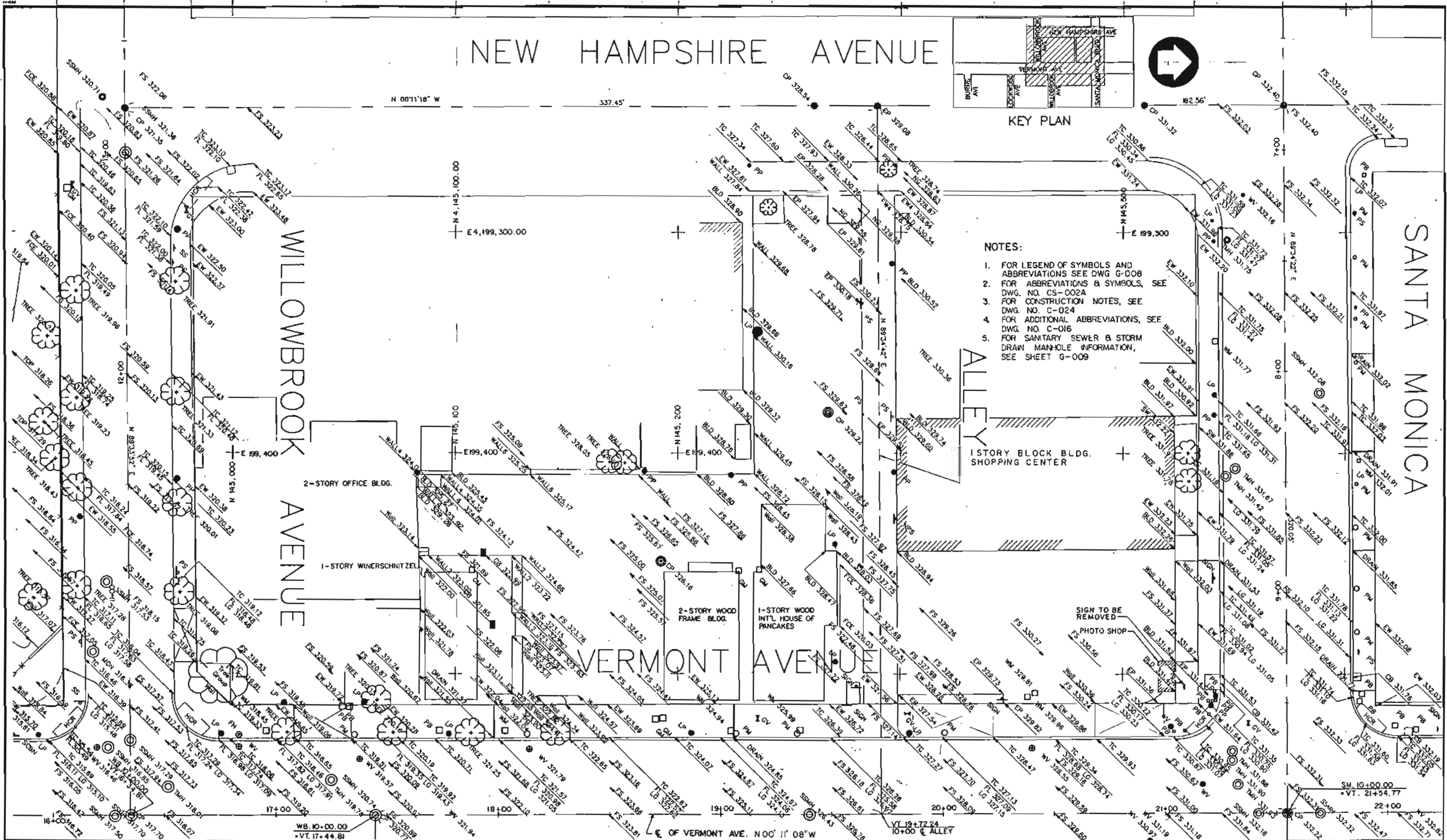
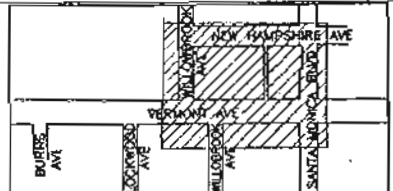
MATCH LINE SEE DWG. NO. G-010



- NOTES:
- FOR LEGEND OF SYMBOLS AND ABBREVIATIONS, SEE DWG. NO. G008.
 - FOR ABBREVIATIONS & SYMBOLS, SEE DWG. NO. CS-002A.
 - FOR ADDITIONAL ABBREVIATIONS, SEE DWG. NO. C-016.

THE PREPARATION OF THIS DRAWING HAS BEEN FINANCED IN PART THROUGH A GRANT FROM THE U.S. DEPARTMENT OF TRANSPORTATION, URBAN MASS TRANSPORTATION ADMINISTRATION UNDER THE URBAN MASS TRANSPORTATION ACT OF 1964, AS AMENDED, AND IN PART BY THE TAXES OF THE CITIZENS OF LOS ANGELES COUNTY AND OF THE STATE OF CALIFORNIA.		DESIGNED BY <i>[Signature]</i> DRAWN BY <i>[Signature]</i> CHECKED BY <i>[Signature]</i> IN CHARGE <i>[Signature]</i> DATE: FEB. 93			Rail Construction Corporation METRO RED LINE STV/SCHELYE STEVENSON VALUE & ECONOMY. METRO RAIL TRANSIT CONSULTANTS 1500/1500-11/1500	CONTRACT NO. B 252 DRAWING NO. G-009 SCALE 1" = 20' SHEET NO. 10
REV. DATE. BY. SUB. APP. DESCRIPTION.	REV. DATE. BY. SUB. APP. DESCRIPTION.	ISSUED FOR BID	SUBMITTED	APPROVED	LA CBD TO NORTH HOLLYWOOD VERMONT/SANTA MONICA STATION EXISTING SURFACE CONDITIONS 2	

NEW HAMPSHIRE AVENUE



- NOTES:
1. FOR LEGEND OF SYMBOLS AND ABBREVIATIONS SEE DWG G-008
 2. FOR ABBREVIATIONS & SYMBOLS, SEE DWG. NO. CS-002A
 3. FOR CONSTRUCTION NOTES, SEE DWG. NO. C-024
 4. FOR ADDITIONAL ABBREVIATIONS, SEE DWG. NO. C-016
 5. FOR SANITARY SEWER & STORM DRAW MANHOLE INFORMATION, SEE SHEET G-009

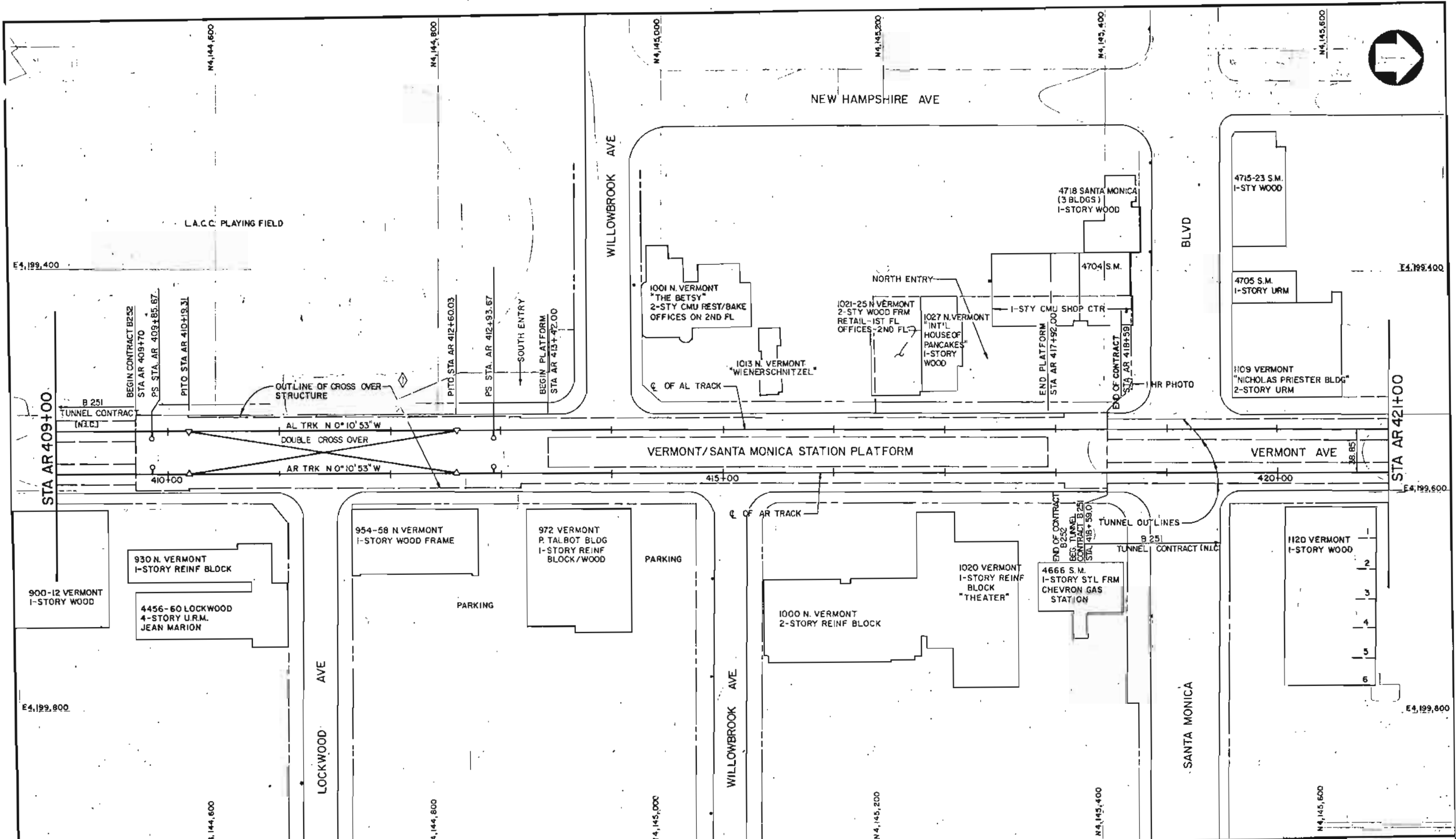
REV	DATE	BY	SLR	APP	DESCRIPTION

DESIGNED BY
 DRAWN BY
 CHECKED BY
 IN CHARGE
 DATE FEB. 93

Rail Construction Corporation
METRO RED LINE

LA CBD TO NORTH HOLLYWOOD
VERMONT/SANTA MONICA STATION
 EXISTING SURFACE CONDITIONS 4
 PLAZA AREA

CONTRACT NO	B 252
DRAWING NO	G-011
SCALE	1" = 20'
SHEET NO	12

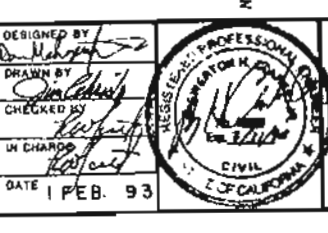


REV	DATE	BY	SUB	APP	DESCRIPTION

THE PREPARATION OF THIS DRAWING HAS BEEN FINANCED IN PART THROUGH A GRANT FROM THE U.S. DEPARTMENT OF TRANSPORTATION URBAN MASS TRANSPORTATION ADMINISTRATION UNDER THE URBAN MASS TRANSPORTATION ACT OF 1964, AS AMENDED, AND IN PART BY THE TAXES OF THE CITIZENS OF LOS ANGELES COUNTY AND OF THE STATE OF CALIFORNIA.

DESIGNED BY: *[Signature]*
 DRAWN BY: *[Signature]*
 CHECKED BY: *[Signature]*
 IN CHARGE: *[Signature]*
 DATE: FEB. 93

ADDENDUM A.01
 ISSUED FOR BID



Rail Construction Corporation
METRO RED LINE

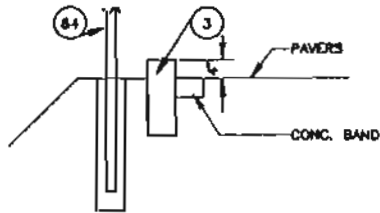
STV/SEELYE STEVENSON VALDES & KNECHT, INC.
 METRO RAIL TRANSIT CONSULTANTS

APPROVED: *[Signature]*

LA CBD TO NORTH HOLLYWOOD
 VERMONT/SANTA MONICA STATION

EXISTING SITE

CONTRACT NO	B252
DRAWING NO	C-005
SCALE	1" = 40'
SHEET NO	21



SECTION A-A

CONSTRUCT NOTES

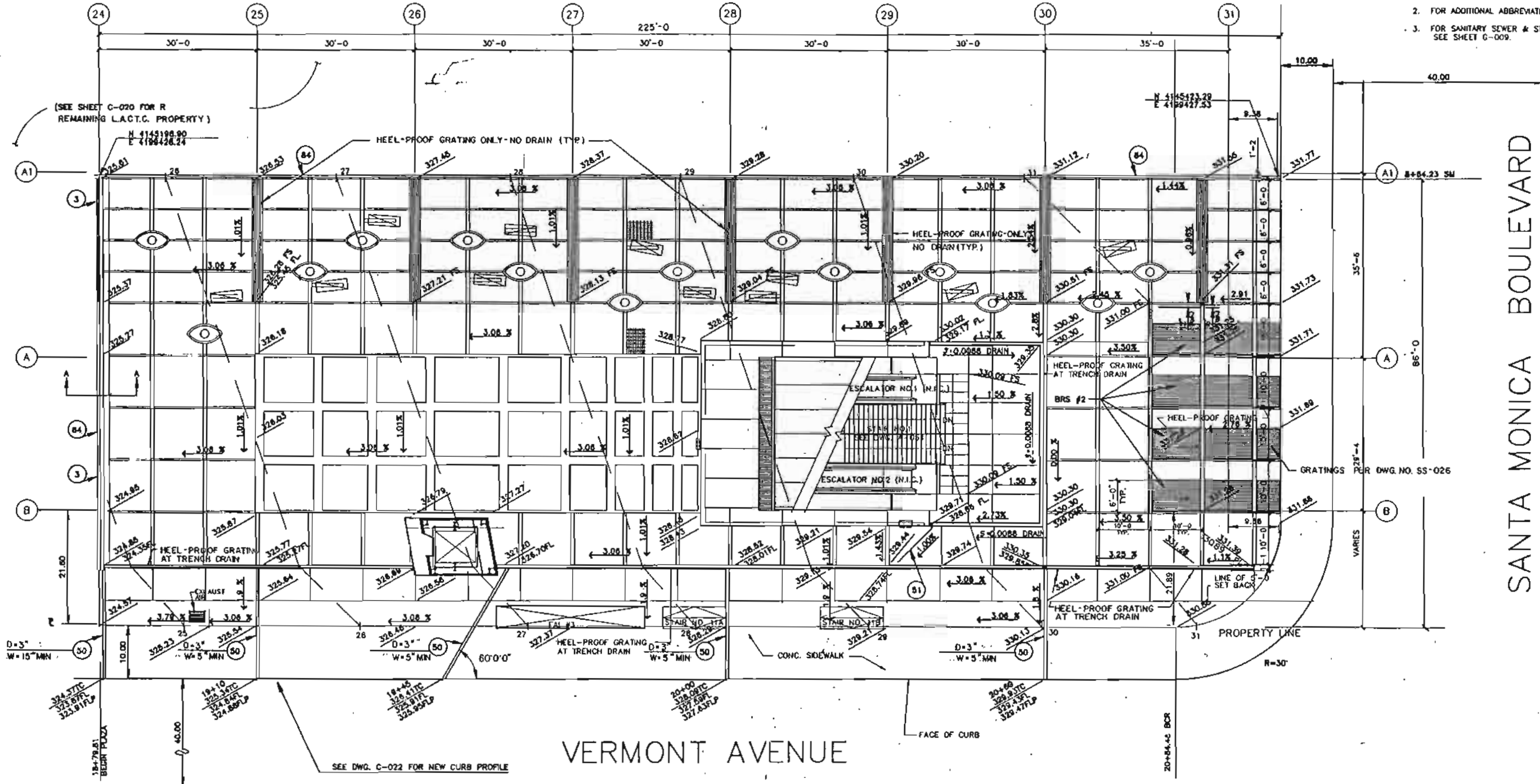
- ③ TYPE "A" CURB, H = 4" PER L.A. CITY S-410-2
- ⑤0 UNDER SIDEWALK DRAIN - SEE C-026 FOR DETAILS
- ⑤1 4" PVC SCHEDULE 40
- ⑤4 8" CHAIN LINK FENCE

SEE SHEET C-020 FOR SURFACE TREATMENT



NOTES:

1. FOR ABBREVIATIONS & SYMBOLS, SEE DWG. NO. CS-002
2. FOR ADDITIONAL ABBREVIATIONS, SEE DWG. NO. C-016
3. FOR SANITARY SEWER & STORM DRAIN MANHOLE INFORMATION SEE SHEET C-009.



SANTA MONICA BOULEVARD

VERMONT AVENUE

THE PREPARATION OF THIS DRAWING HAS BEEN FINANCED IN PART THROUGH A GRANT FROM THE U.S. DEPARTMENT OF TRANSPORTATION, URBAN MASS TRANSPORTATION ADMINISTRATION, UNDER THE URBAN MASS TRANSPORTATION ACT OF 1964, AS AMENDED, AND IN PART BY THE TAXES OF THE CITIZENS OF LOS ANGELES COUNTY AND OF THE STATE OF CALIFORNIA.

DESIGNED BY
DRAWN BY
CHECKED BY
IN CHARGE
DATE FEB 93



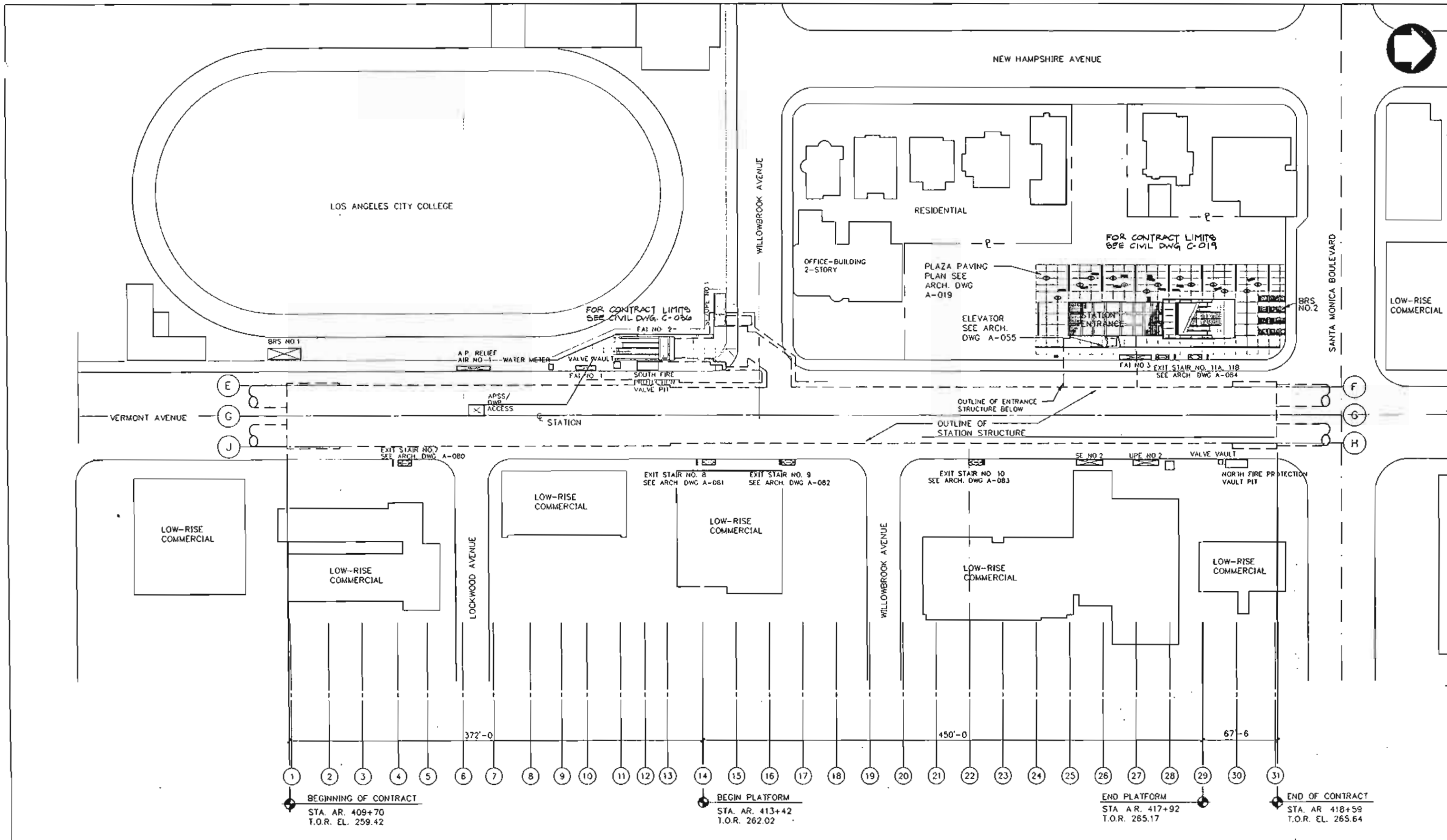
Rail Construction Corporation
METRO RED LINE

STV SKELLY STEVENSON VALUE & KNECHT
ENGINEERING MANAGEMENT CONSULTANT

LA CBD TO NORTH HOLLYWOOD
VERMONT/SANTA MONICA STATION
GRADING, PAVING, DRAINAGE
PLAZA AREA

CONTRACT NO	B 252
DRAWING NO	C-019
SCALE	1" = 10'
SHEET NO	35

REV	DATE	BY	SUB	APP	DESCRIPTION
0	4-19-93				ISSUED FOR BID

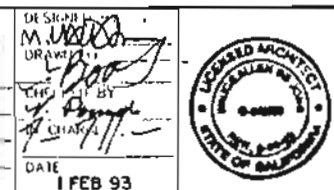


REV	DATE	BY	SUB	APP

THE PREPARATION OF THIS DRAWING HAS BEEN FINANCED IN PART THROUGH A GRANT FROM THE U.S. DEPARTMENT OF TRANSPORTATION, URBAN MASS TRANSPORTATION ADMINISTRATION, UNDER THE URBAN MASS TRANSPORTATION ACT OF 1964, AS AMENDED, AND IN PART BY THE TAXES OF THE CITIZENS OF LOS ANGELES COUNTY AND OF THE STATE OF CALIFORNIA.

DESIGNED BY: *M. W. ...*
 DRAWN BY: *L. ...*
 CHECKED BY: *H. ...*
 DATE: 1 FEB 93

ISSUED FOR BID



Rail Construction Corporation
METRO RED LINE

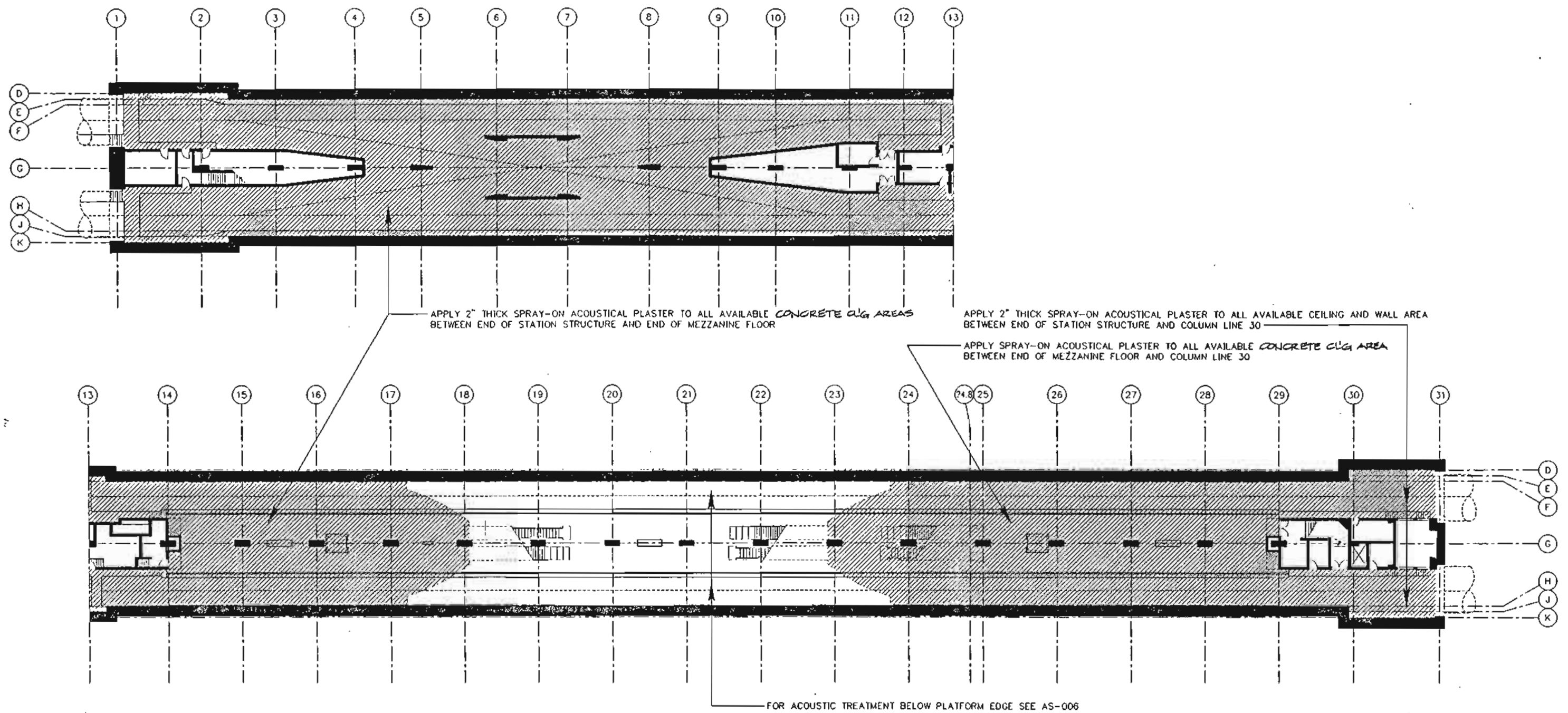
STV/SARVE STEVENSON VALDES & ENRIGHT
 ENGINEERING MANAGEMENT CONSULTANTS

ELLERBE BECKETT

LA CBD TO NORTH HOLLYWOOD
 VERMONT/SANTA MONICA STATION

ARCHITECTURAL SITE PLAN

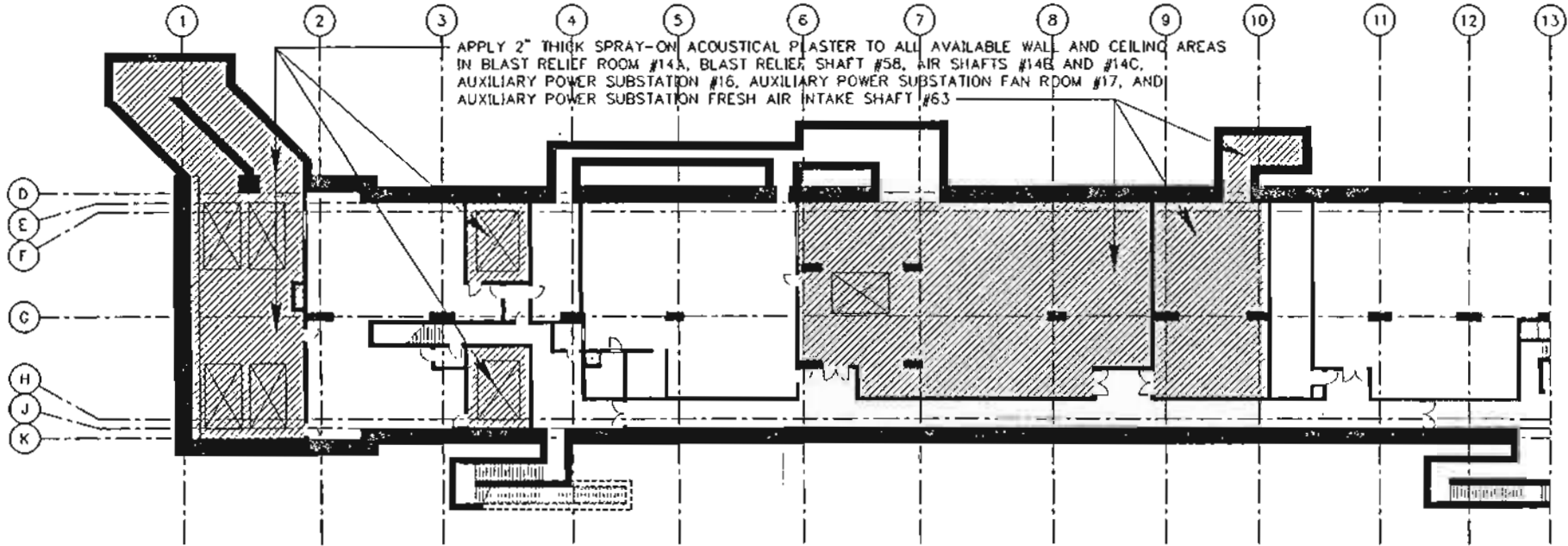
CONTRACT NO	B 252
DRAWING NO	A-002
SCALE	1" = 40'-0"
SHEET NO	373



CROSSOVER/PLATFORM LEVEL 1
A-003

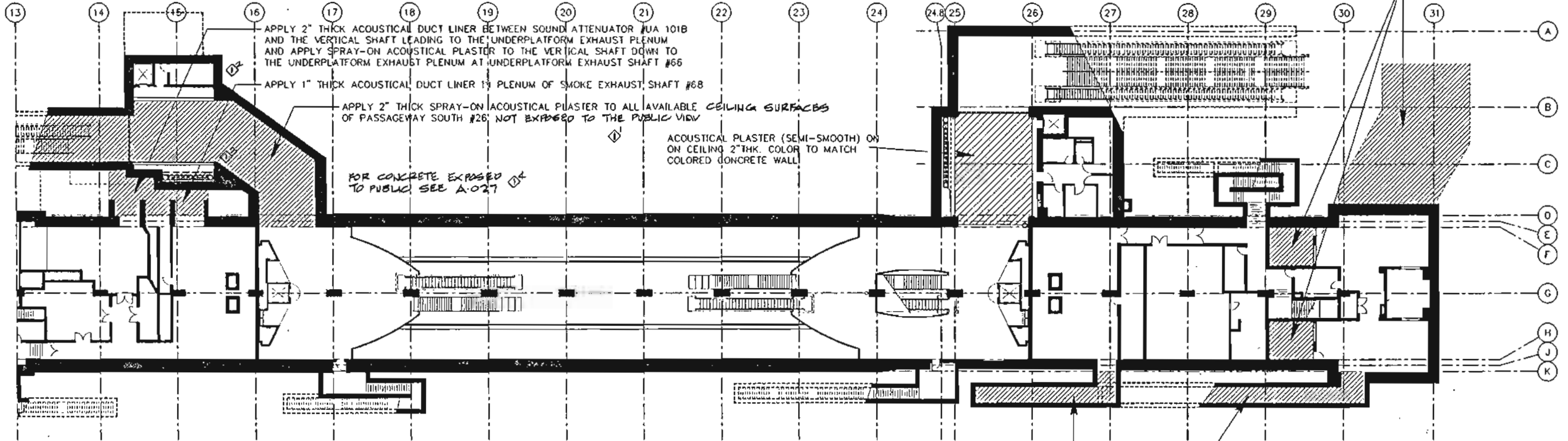
THE PREPARATION OF THIS DRAWING HAS BEEN FINANCED IN PART THROUGH A GRANT FROM THE U.S. DEPARTMENT OF TRANSPORTATION URBAN MASS TRANSPORTATION ADMINISTRATION, UNDER THE URBAN MASS TRANSPORTATION ACT OF 1964, AS AMENDED, AND IN PART BY THE TAXES OF THE CITIZENS OF LOS ANGELES COUNTY AND OF THE STATE OF CALIFORNIA.				DESIGNED BY <i>M. Wilson</i> DRAWN BY <i>J. Doe</i> CHECKED BY <i>F. Smith</i> DATE 1 FEB 93								CONTRACT NO. B 252 DRAWING NO. A-003 SCALE 1"=20'-0" SHEET NO. 374	
REV	DATE	BY	SUB	APP	DESCRIPTION	RAIL CONSTRUCTION CORPORATION METRO RED LINE LA CBD TO NORTH HOLLYWOOD VERMONT/SANTA MONICA STATION TRACK AND PLATFORM ACOUSTIC PLAN							
0	4/93				ISSUED FOR BID								

01/27/93 03:20:47:88 UP:LA PL:03 1/21/93 17:38 FOR



APPLY 2" THICK SPRAY-ON ACOUSTICAL PLASTER TO ALL AVAILABLE WALL AND CEILING AREAS IN BLAST RELIEF ROOM #14A, BLAST RELIEF SHAFT #58, AIR SHAFTS #14E AND #14C, AUXILIARY POWER SUBSTATION #16, AUXILIARY POWER SUBSTATION FAN ROOM #17, AND AUXILIARY POWER SUBSTATION FRESH AIR INTAKE SHAFT #63

APPLY 2" THICK SPRAY-ON ACOUSTICAL PLASTER TO ALL AVAILABLE WALL AND CEILING AREAS OF BLAST RELIEF SHAFT #83 AND DAMPER ROOMS #44B AND #44C



APPLY 2" THICK ACOUSTICAL DUCT LINER BETWEEN SOUND ATTENUATOR #UA 101B AND THE VERTICAL SHAFT LEADING TO THE UNDERPLATFORM EXHAUST PLENUM AND APPLY SPRAY-ON ACOUSTICAL PLASTER TO THE VERTICAL SHAFT DOWN TO THE UNDERPLATFORM EXHAUST PLENUM AT UNDERPLATFORM EXHAUST SHAFT #66

APPLY 1" THICK ACOUSTICAL DUCT LINER IN PLENUM OF SMOKE EXHAUST SHAFT #68

APPLY 2" THICK SPRAY-ON ACOUSTICAL PLASTER TO ALL AVAILABLE CEILING SURFACES OF PASSAGEWAY SOUTH #26 NOT EXPOSED TO THE PUBLIC VIEW

ACOUSTICAL PLASTER (SEMI-SMOOTH) ON CEILING 2" THK. COLOR TO MATCH COLORED CONCRETE WALL

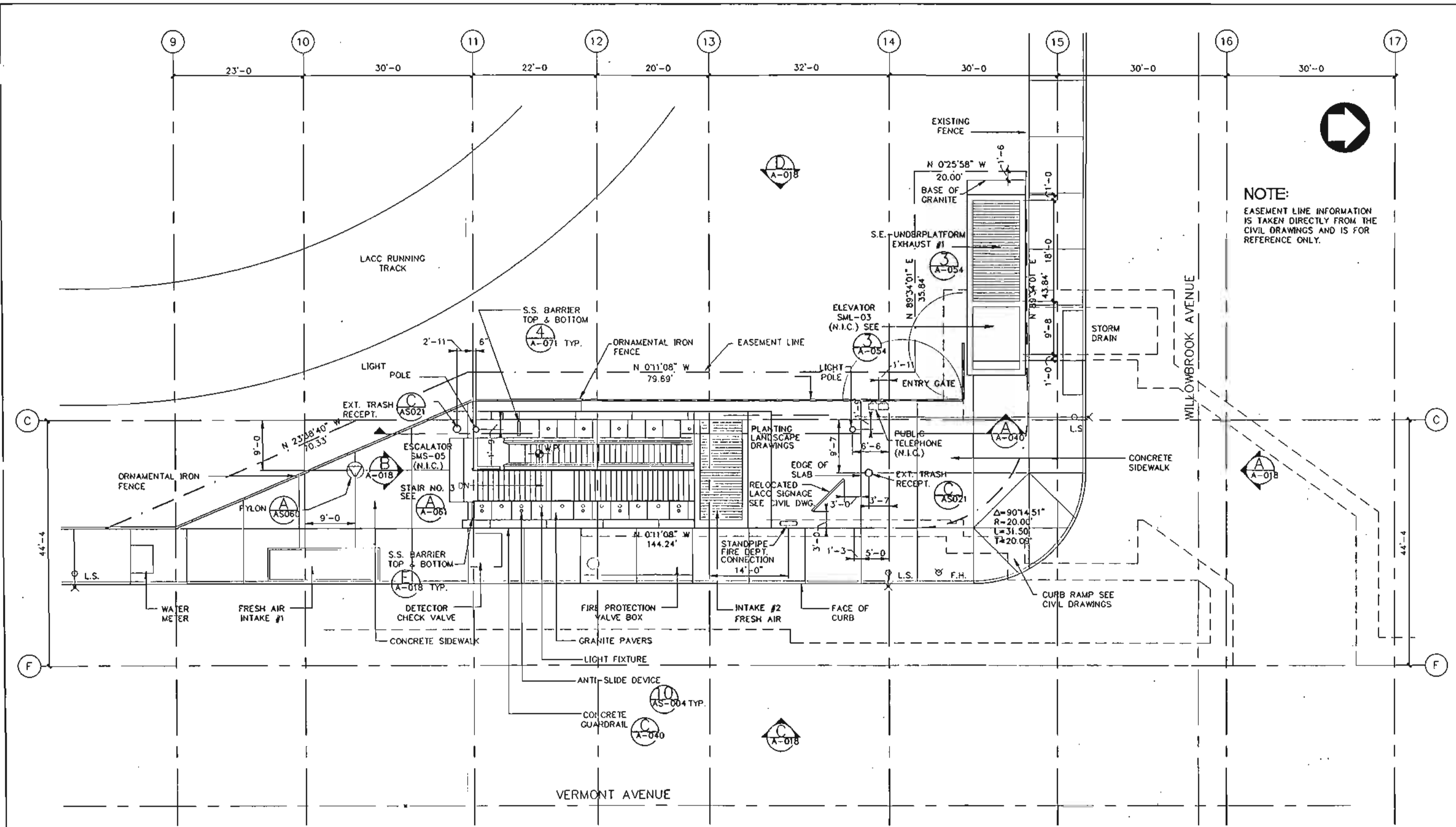
FOR CONCRETE EXPOSED TO PUBLIC SEE A-027

APPLY 2" THICK ACOUSTICAL DUCT LINER BETWEEN SOUND ATTENUATOR #SA 052B AND COLUMN LINE "K". APPLY 1" THICK ACOUSTICAL DUCT LINER IN PLENUM, AND APPLY SPRAY-ON ACOUSTICAL PLASTER TO ALL AVAILABLE WALL AND CEILING SURFACES OF SMOKE EXHAUST SHAFT #81

APPLY 2" THICK ACOUSTICAL DUCT LINER BETWEEN SOUND ATTENUATOR #UA 102A AND UNDERPLATFORM EXHAUST PLENUM, AND APPLY SPRAY-ON ACOUSTICAL PLASTER TO ALL AVAILABLE WALL AND CEILING SURFACES FROM NORTH END OF PLENUM TO A POINT MINIMUM 50'-0" SOUTH IN UNDERPLATFORM EXHAUST PLENUM. ALSO, APPLY SPRAY-ON ACOUSTICAL PLASTER TO ALL AVAILABLE WALL AND CEILING SURFACES IN UNDERPLATFORM EXHAUST SHAFT #85.

ANCILLARY/MEZZANINE LEVEL 1
A-004

<p>THE PREPARATION OF THIS DRAWING HAS BEEN FINANCED IN PART THROUGH A GRANT FROM THE U.S. DEPARTMENT OF TRANSPORTATION URBAN MASS TRANSPORTATION ADMINISTRATION, UNDER THE URBAN MASS TRANSPORTATION ACT OF 1964, AS AMENDED, AND IN PART BY THE TAXES OF THE CITIZENS OF LOS ANGELES COUNTY AND OF THE STATE OF CALIFORNIA.</p>				<p>DATE: 1 FEB 93</p>				<p>Rail Construction Corporation METRO RED LINE</p>		<p>LA CBD TO NORTH HOLLYWOOD VERMONT/SANTA MONICA STATION</p>		<p>CONTRACT NO. B 252 DRAWING NO. A-004 SCALE: 1" = 20'-0" SHEET NO. 375</p>	
<p>APPENDUM NO. A01 ISSUED FOR B10</p>				<p>DATE: 1 FEB 93</p>				<p>STV/STEVEN M. YULE & ASSOCIATES ENGINEERING MANAGEMENT CONSULTANTS</p>		<p>ANCILLARY/MEZZANINE ACOUSTIC PLAN</p>		<p>CONTRACT NO. B 252 DRAWING NO. A-004 SCALE: 1" = 20'-0" SHEET NO. 375</p>	
REV	DATE	BY	SUB	APP	DESCRIPTION								



NOTE:
EASEMENT LINE INFORMATION IS TAKEN DIRECTLY FROM THE CIVIL DRAWINGS AND IS FOR REFERENCE ONLY.

REV	DATE	BY	SUB	APP

THE PREPARATION OF THIS DRAWING HAS BEEN FINANCED IN PART THROUGH A GRANT FROM THE U.S. DEPARTMENT OF TRANSPORTATION, URBAN MASS TRANSPORTATION ADMINISTRATION, UNDER THE URBAN MASS TRANSPORTATION ACT OF 1964, AS AMENDED, AND IN PART BY THE TAXES OF THE CITIZENS OF LOS ANGELES COUNTY AND OF THE STATE OF CALIFORNIA.

ISSUED FOR BID

DATE 1 FEB 93

DESIGNED BY: *[Signature]*

CHECKED BY: *[Signature]*

DATE: 1 FEB 93

REGISTERED ARCHITECT
STATE OF CALIFORNIA

Rail Construction Corporation
METRO RED LINE

STV/STEVENS STEVENSON VALUE & ENGINEERS

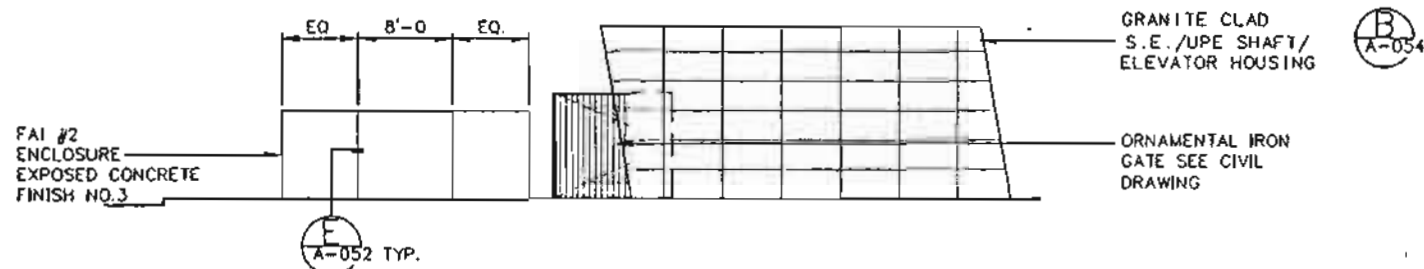
ELLERBE BRETHERTON

ENGINEERING MANAGEMENT CONSULTANTS

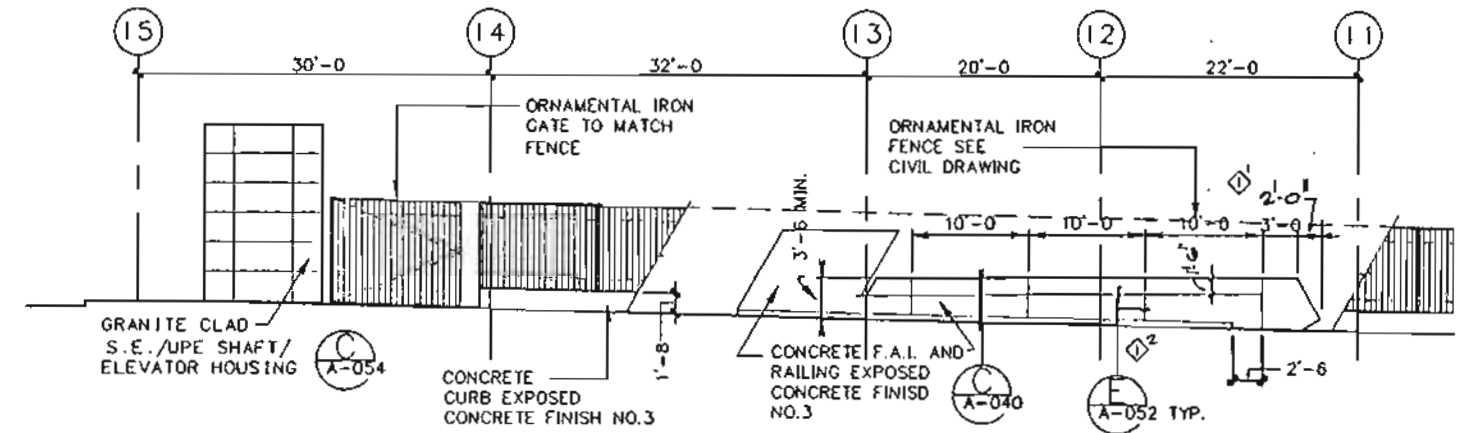
LA CBD TO NORTH HOLLYWOOD
VERMONT/SANTA MONICA STATION

SOUTH ENTRY PLAN

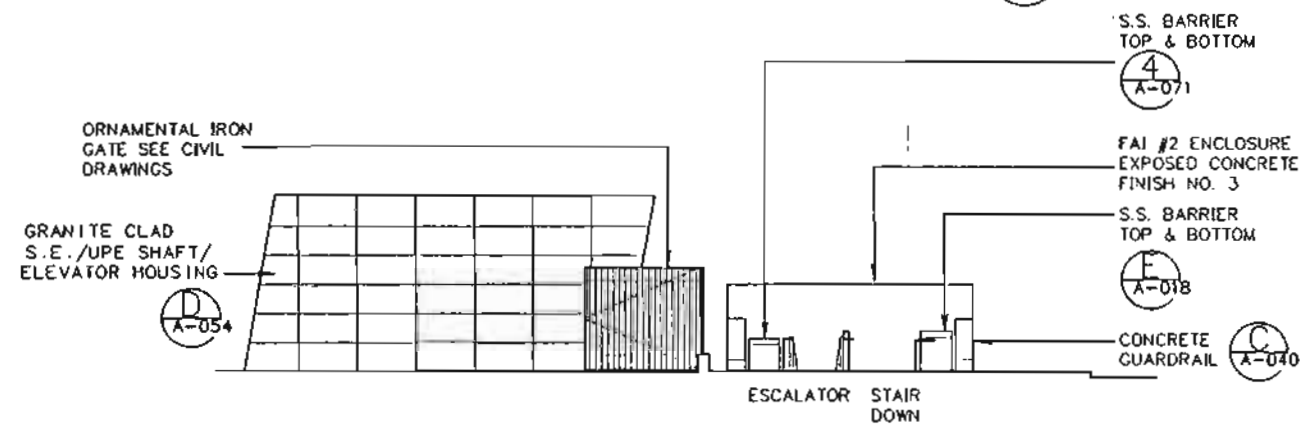
CONTRACT NO.	B 252
DRAWING NO.	A-017
SCALE	1/8"=1'-0"
SHEET NO.	300



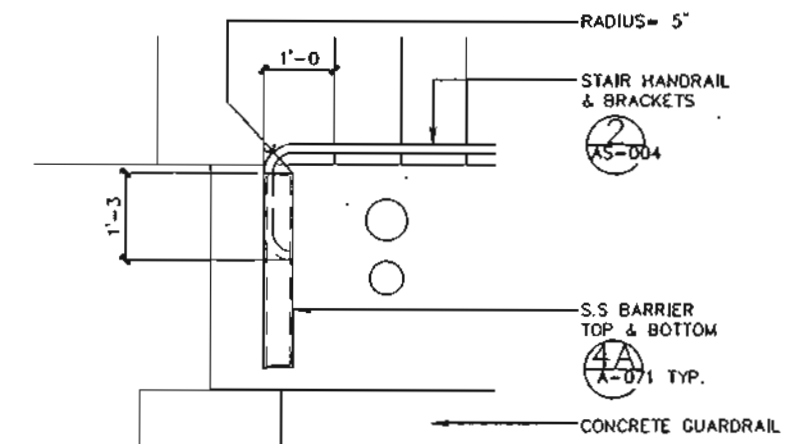
NORTH ELEVATION
SCALE: 1/8" = 1'-0"



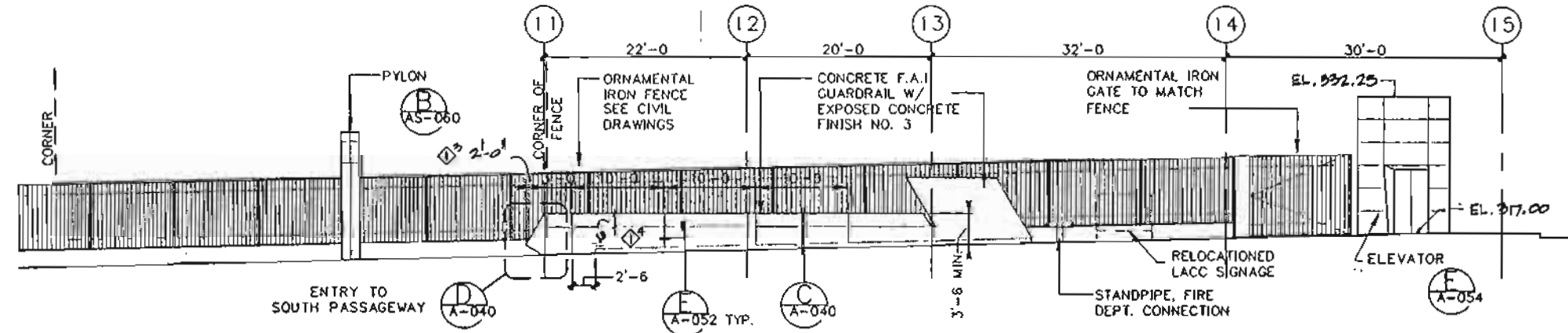
WEST ELEVATION
SCALE: 1/8" = 1'-0"



SOUTH ELEVATION
SCALE: 1/8" = 1'-0"



PLAN DETAIL
SCALE: 3/4" = 1'-0"



EAST ELEVATION
SCALE: 1/8" = 1'-0"

REV	DATE	BY	SUB	APP

REV	DATE	BY	SUB	APP	DESCRIPTION

DESIGNED BY
[Signature]
CHECKED BY
[Signature]
DATE 1 FEB 93

Rail Construction Corporation
METRO RED LINE

STV / STEVE STEVENSON VALIN & JOHNSON
REGISTERED ARCHITECT
STATE OF CALIFORNIA

ELLERBE BECKETT
REGISTERED ARCHITECT
STATE OF CALIFORNIA

ENGINEERING MANAGEMENT CONSULTANTS
REGISTERED PROFESSIONAL ENGINEERS
STATE OF CALIFORNIA

LA CBD TO NORTH HOLLYWOOD
VERMONT/SANTA MONICA STATION

SOUTH ENTRY
SECTION/ELEVATIONS

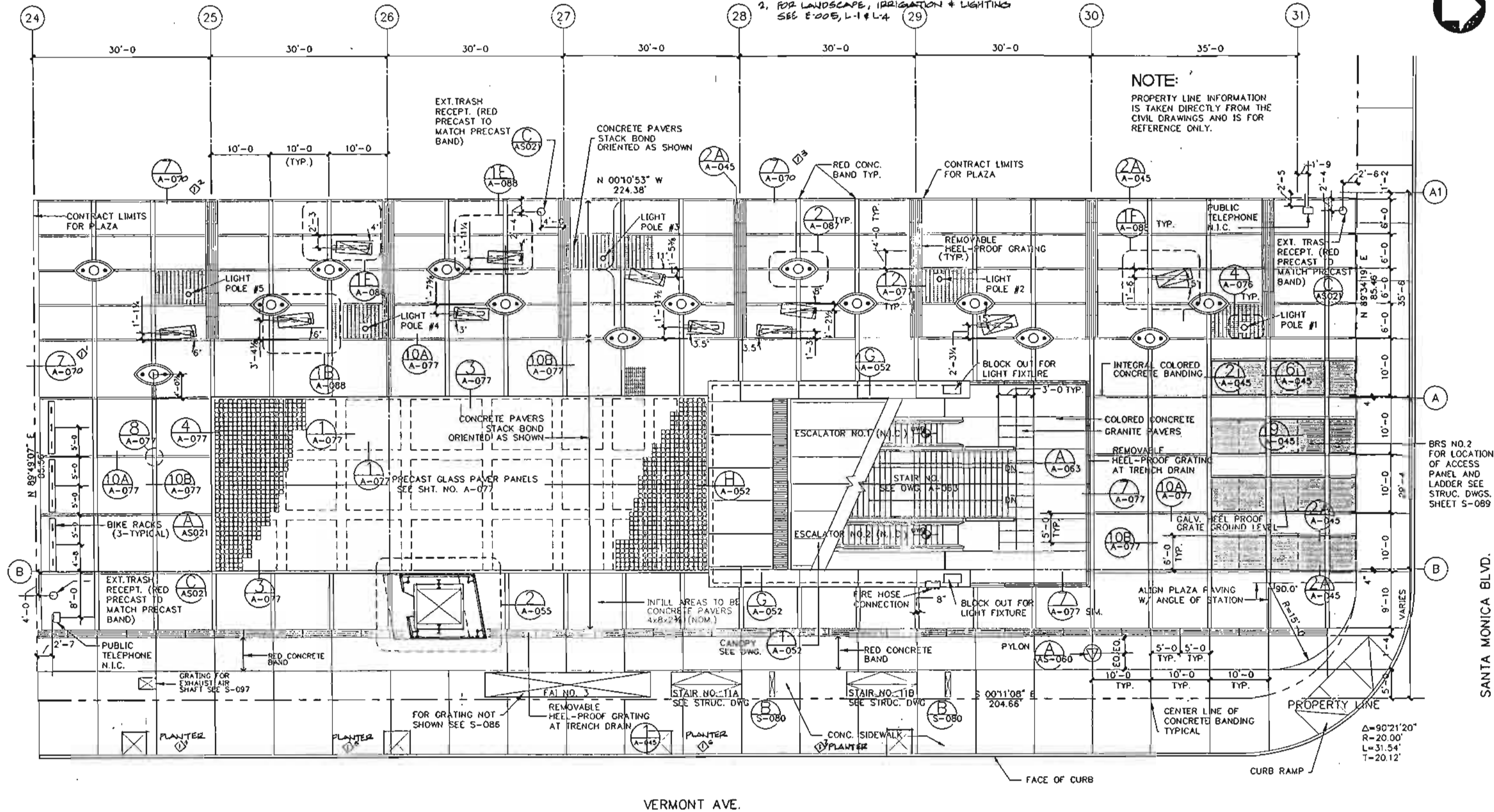
CONTRACT NO.	B 252
DRAWING NO.	A-018
SCALE	AS NOTED
SHEET NO.	389

GENERAL NOTE:

1. FOR LIGHT POLE LOCATION DIMENSIONS SEE 4/A-076
2. FOR LANDSCAPE, IRRIGATION & LIGHTING SEE E-005, L-1 & L-4

NOTE:

PROPERTY LINE INFORMATION IS TAKEN DIRECTLY FROM THE CIVIL DRAWINGS AND IS FOR REFERENCE ONLY.

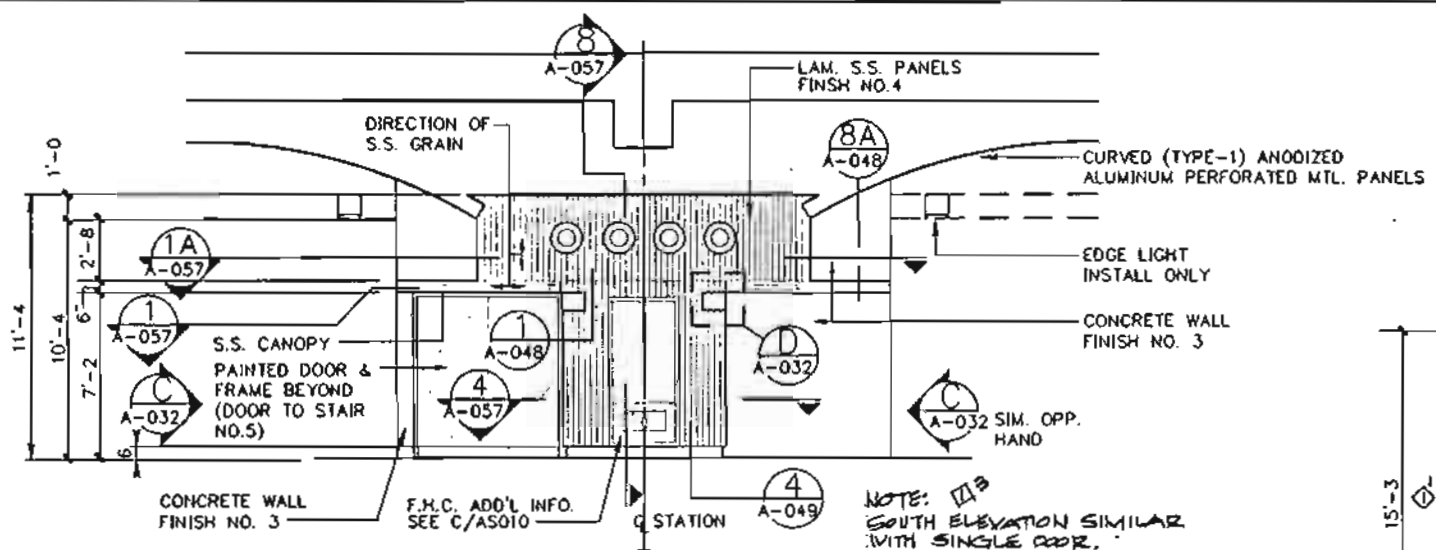


VERMONT AVE.

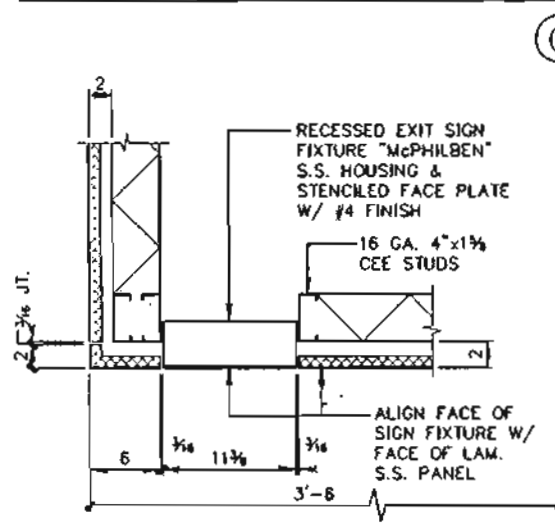
SANTA MONICA BLVD.

<p>THE PREPARATION OF THIS DRAWING HAS BEEN FINANCED IN PART THROUGH A GRANT FROM THE U.S. DEPARTMENT OF TRANSPORTATION, URBAN MASS TRANSPORTATION ADMINISTRATION, UNDER THE URBAN MASS TRANSPORTATION ACT OF 1964, AS AMENDED, AND IN PART BY THE TAXES OF THE CITIZENS OF LOS ANGELES COUNTY AND OF THE STATE OF CALIFORNIA.</p>				<p>DESIGNED BY <i>[Signature]</i> CHECKED BY <i>[Signature]</i> DATE 1 FEB 93</p>		<p>RAIL CONSTRUCTION CORPORATION METRO RED LINE</p>		<p>LA CBD TO NORTH HOLLYWOOD VERMONT/SANTA MONICA STATION</p>		<p>CONTRACT NO. B 252 DRAWING NO. A-019 SCALE 1/4" = 1'-0" SHEET NO. 390</p>	
REV	DATE	BY	SUB	APP	DESCRIPTION	<p>STV/REXELVE INTERVENTION VALUE & ENERGY ELLERBE BECKET</p>		<p>ENGINEERING MANAGEMENT CONSULTANTS</p>		<p>NORTH PLAZA PLAN</p>	
0	4.19.93	TP	SK	J	APPENDUM NO. A02 ISSUED FOR B.O	<p>STATE OF CALIFORNIA LICENSED PROFESSIONAL ENGINEER NO. 22345</p>		<p>APPROVED <i>[Signature]</i></p>		<p>REVISIONS</p>	

03/22/93 01:24:58* OFF-LA FL-03 3/22/93 13:30 #06
 03/22/93 01:24:58* OFF-LA FL-03 3/22/93 13:30 #06
 03/22/93 01:24:58* OFF-LA FL-03 3/22/93 13:30 #06

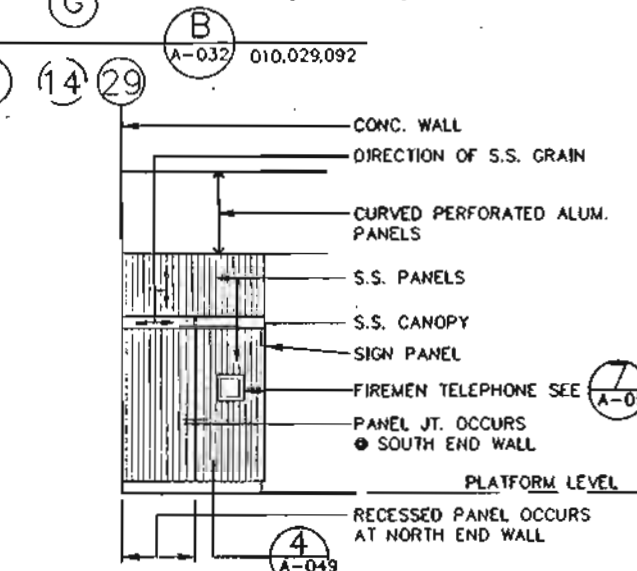


ELEVATION-NORTH END WALL

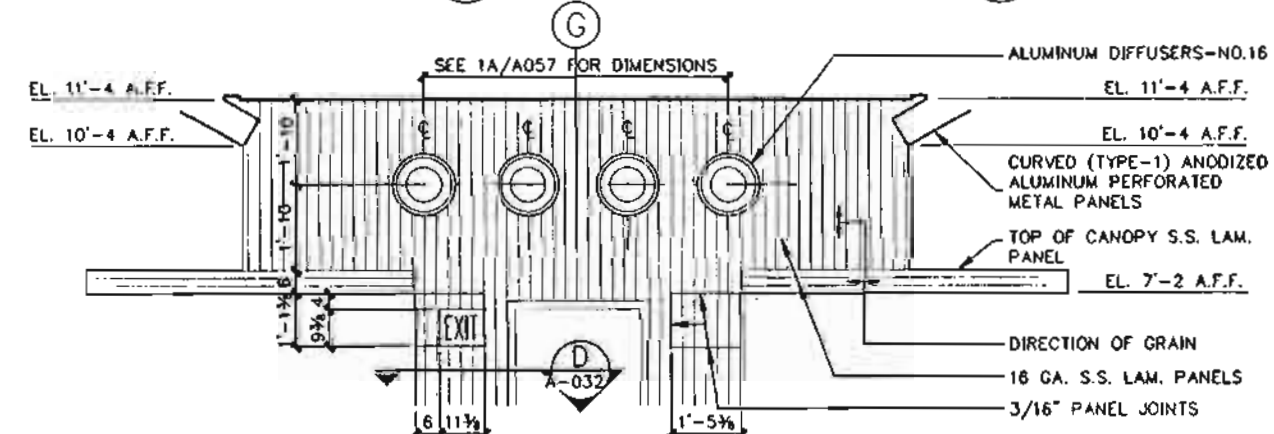


SECTION-SIGN PANEL

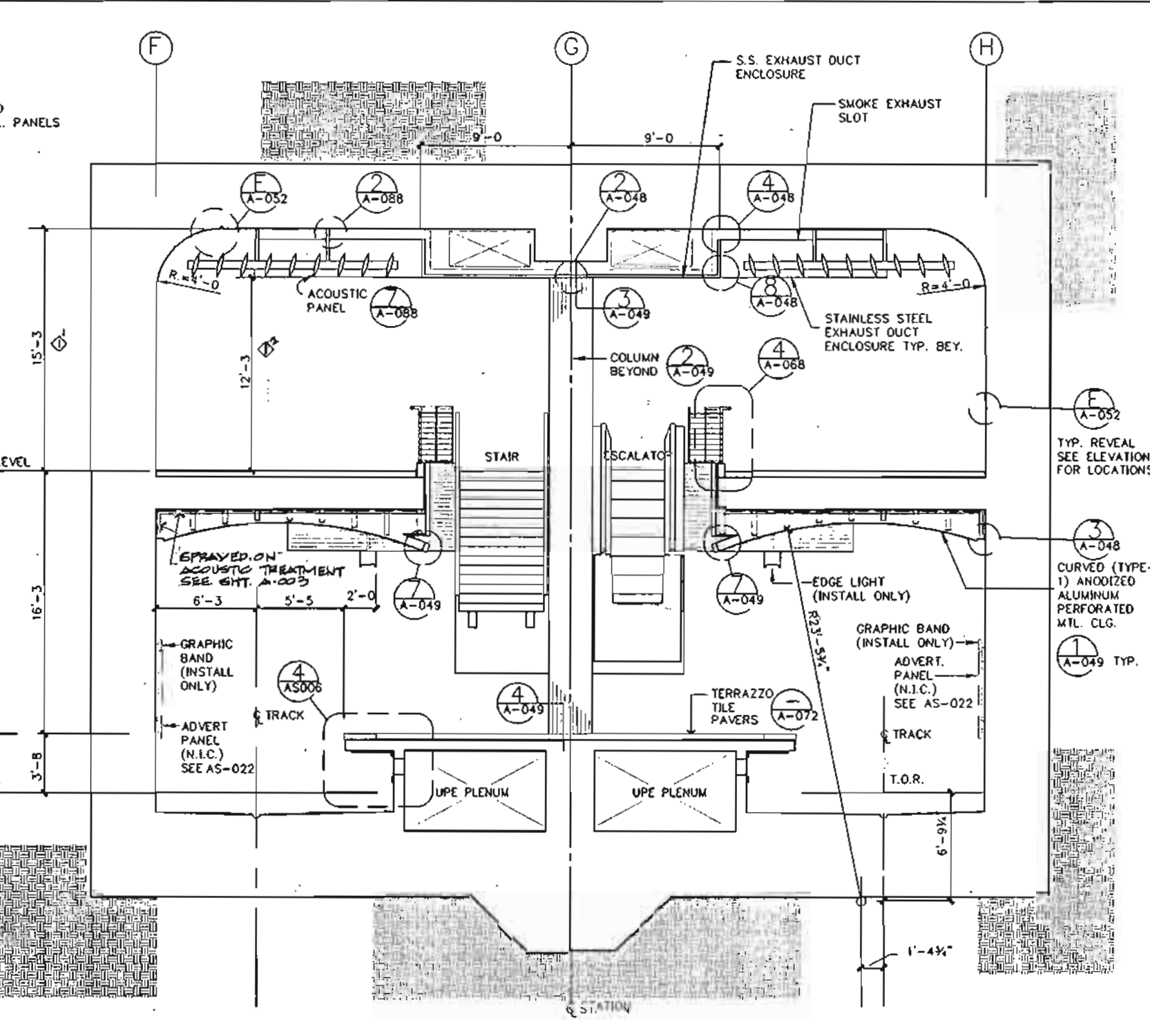
SCALE: 1 1/2" = 1'-0"



ELEVATION



ENLARGED ELEVATION



- NOTES:
1. FOR LIGHTING SEE REFLECTED CEILING PLAN A-024
 2. FOR STAINLESS STEEL PANEL TYPES SEE SHEET NO. A-092

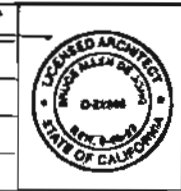
SECTION

A-032 009,014,028

REV	DATE	BY	SUB	APP

REV	DATE	BY	SUB	APP	DESCRIPTION

DESIGNED BY
 CHECKED BY
 IN CHARGE
 DATE 1/27/93



Rail Construction Corporation
METRO RED LINE

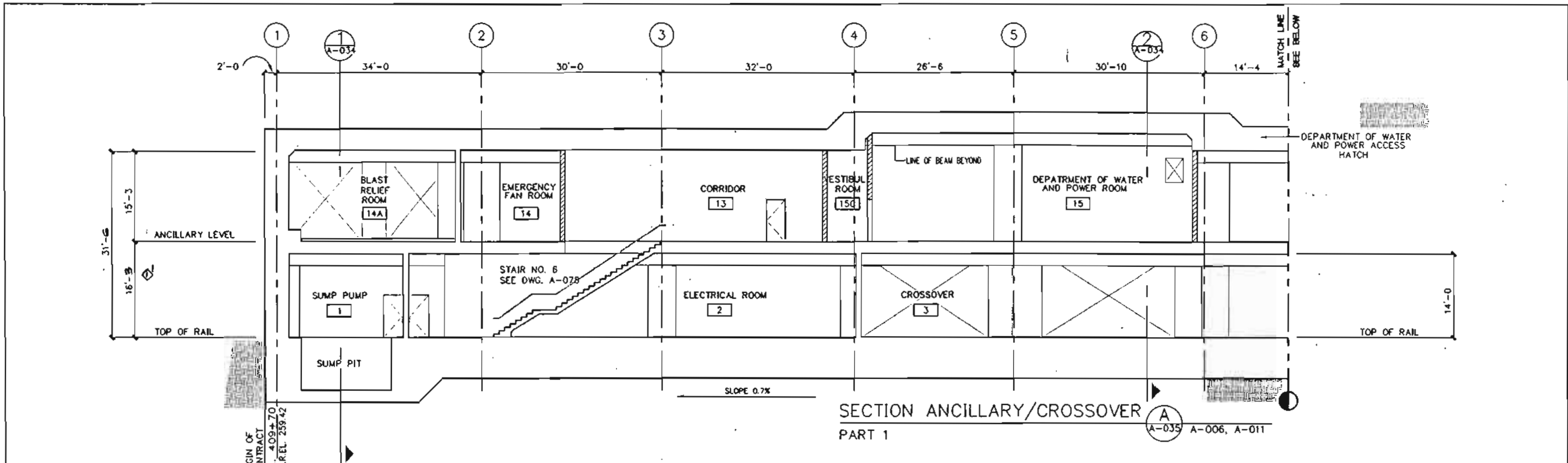
STV/SEELEY STEVENSON VALDES & SHRYVE
 ENGINEERING MANAGEMENT CONSULTANTS

ELLEN BECKETT

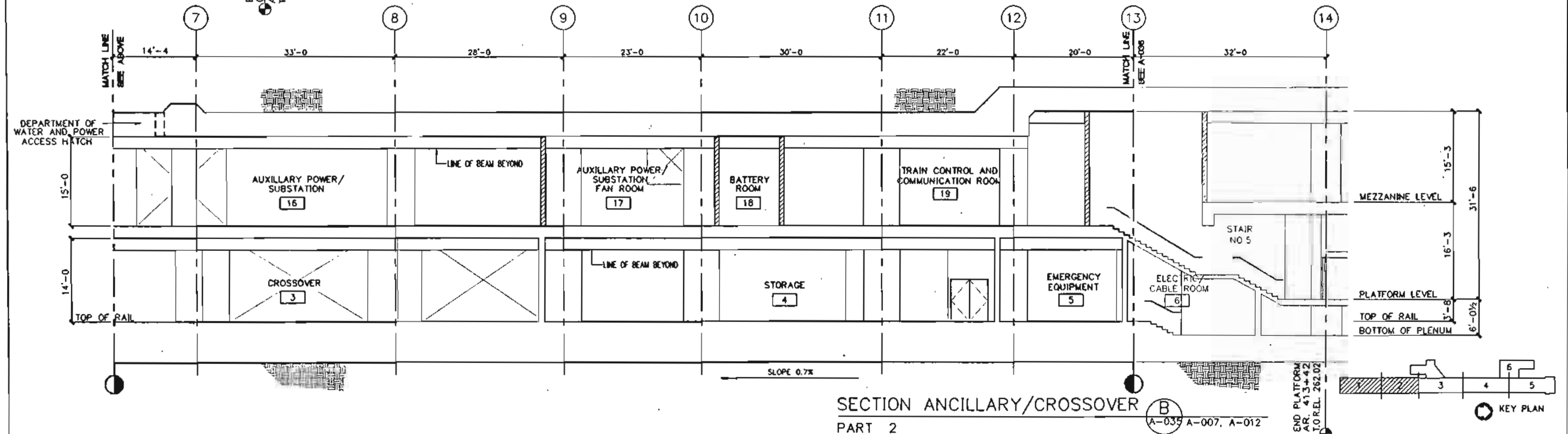
LA CBD TO NORTH HOLLYWOOD
 VERMONT/SANTA MONICA STATION

CROSS SECTION/ELEVATION

CONTRACT NO.	8 252
DRAWING NO.	A-032
SCALE	1/4"=1'-0"
SHEET NO.	403



SECTION ANCILLARY/CROSSOVER PART 1
A-035 A-006, A-011



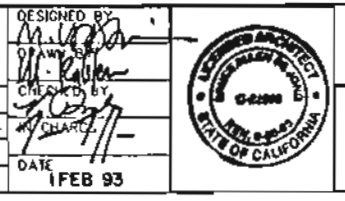
SECTION ANCILLARY/CROSSOVER PART 2
A-035 A-007, A-012

REV	DATE	BY	SUB	APP	DESCRIPTION

THE PREPARATION OF THIS DRAWING HAS BEEN FINANCED IN PART THROUGH A GRANT FROM THE U.S. DEPARTMENT OF TRANSPORTATION, URBAN MASS TRANSPORTATION ADMINISTRATION, UNDER THE URBAN MASS TRANSPORTATION ACT OF 1964, AS AMENDED, AND IN PART BY THE TAXES OF THE CITIZENS OF LOS ANGELES COUNTY AND OF THE STATE OF CALIFORNIA.

DESIGNED BY: *[Signature]*
 DRAWN BY: *[Signature]*
 CHECKED BY: *[Signature]*
 DATE: 1 FEB 93

APPENDIX NO. A-02
 15880 FOR 80



Rail Construction Corporation
METRO RED LINE

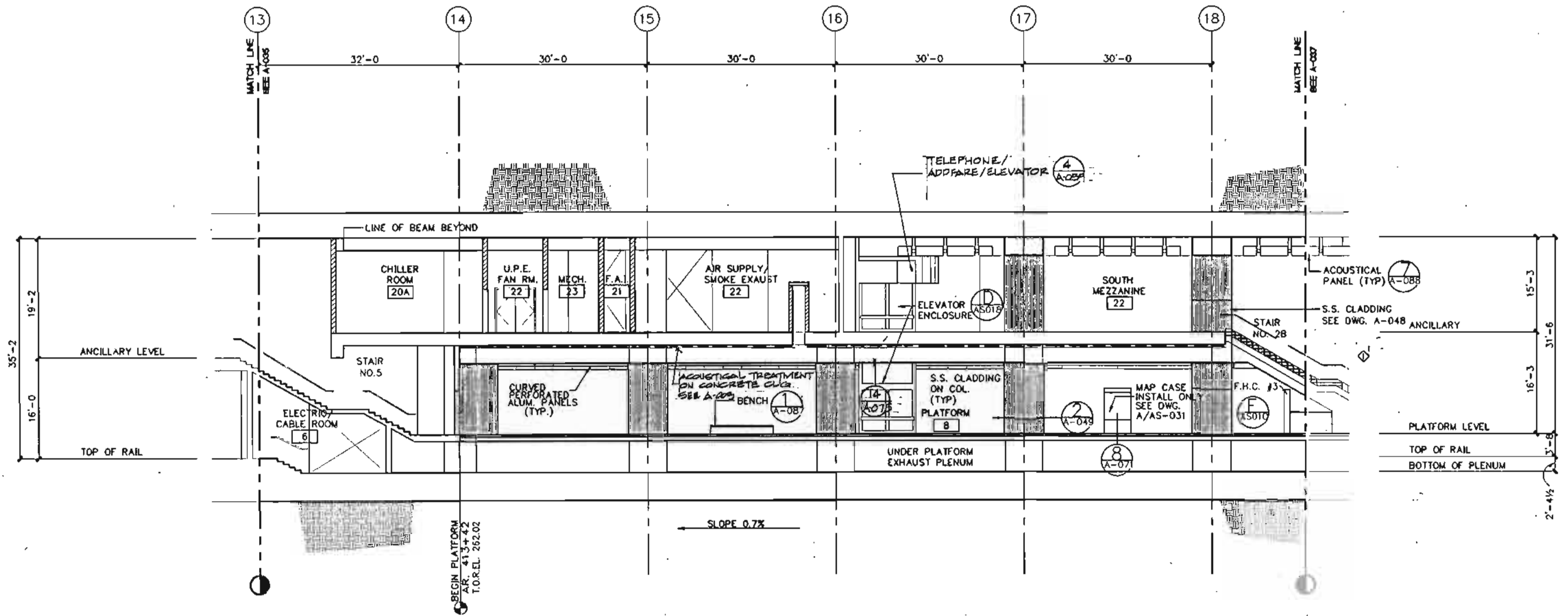
STV/SEELYE STEVENSON YALOW & ENYET
 ENGINEERING MANAGEMENT CONSULTANTS

ELLERBE BECKETT

LA CBD TO NORTH HOLLYWOOD
 VERMONT/SANTA MONICA STATION

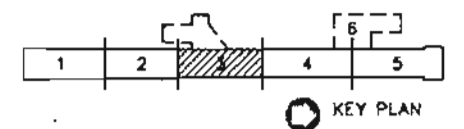
LONGITUDINAL SECTIONS
 PARTS 1 & 2

CONTRACT NO. B 252	REV. 1
DRAWING NO. A-035	
SCALE 1/8" = 1'-0"	
SHEET NO. A066	

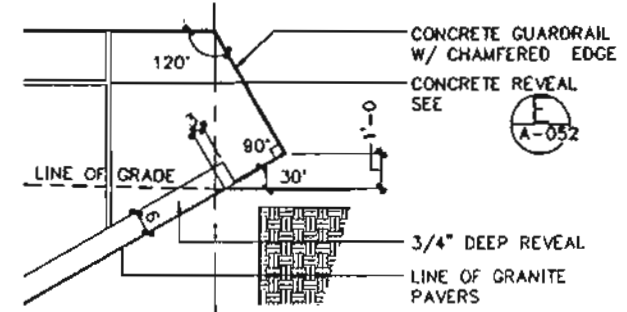


SECTION
PART 3

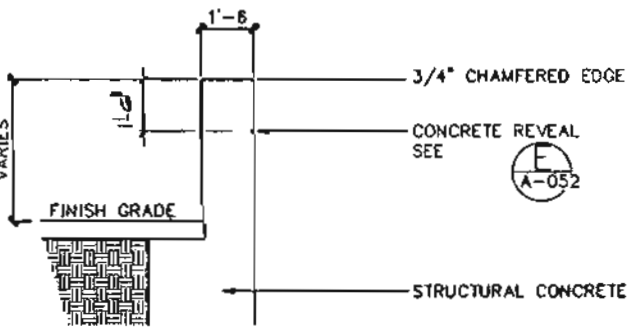
A
A-036 A-008, A-013



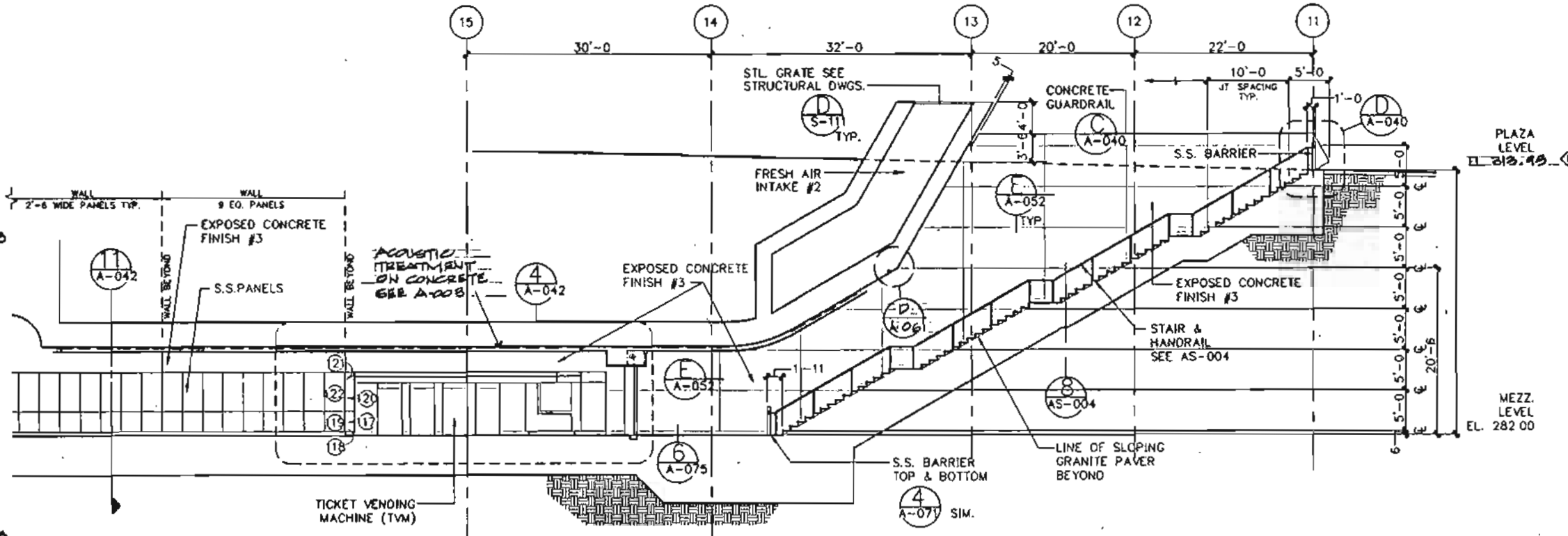
THE PREPARATION OF THIS DRAWING HAS BEEN FINANCED IN PART THROUGH A GRANT FROM THE U.S. DEPARTMENT OF TRANSPORTATION, URBAN MASS TRANSPORTATION ADMINISTRATION, UNDER THE URBAN MASS TRANSPORTATION ACT OF 1964, AS AMENDED, AND IN PART BY THE TAXES OF THE CITIZENS OF LOS ANGELES COUNTY AND OF THE STATE OF CALIFORNIA.				DESIGNED BY <i>M. J. [Signature]</i> CHECKED BY <i>[Signature]</i> DATE FEB 93												Rail Construction Corporation METRO RED LINE STV/REBEY STEVENSON VALUE & ENERGY ENGINEERING MANAGEMENT CONSULTANTS				LA CBD TO NORTH HOLLYWOOD VERMONT/SANTA MONICA STATION LONGITUDINAL SECTION PART 3				CONTRACT NO. B 252		DRAWING NO. A-036		REV. 1	
REV. DATE BY SUB APP				REV. DATE BY SUB APP				DESCRIPTION				SCALE 1/8" = 1'-0"				SHEET NO. 407													
0 1/2" UP * 7- ADDENDUM NO A01... ISSUED FOR BID				DATE FEB 93				APPROVED <i>[Signature]</i>				APPROVED <i>[Signature]</i>				SHEET NO. 407													



DETAIL ELEVATION
SCALE: 3/8" = 1'-0"

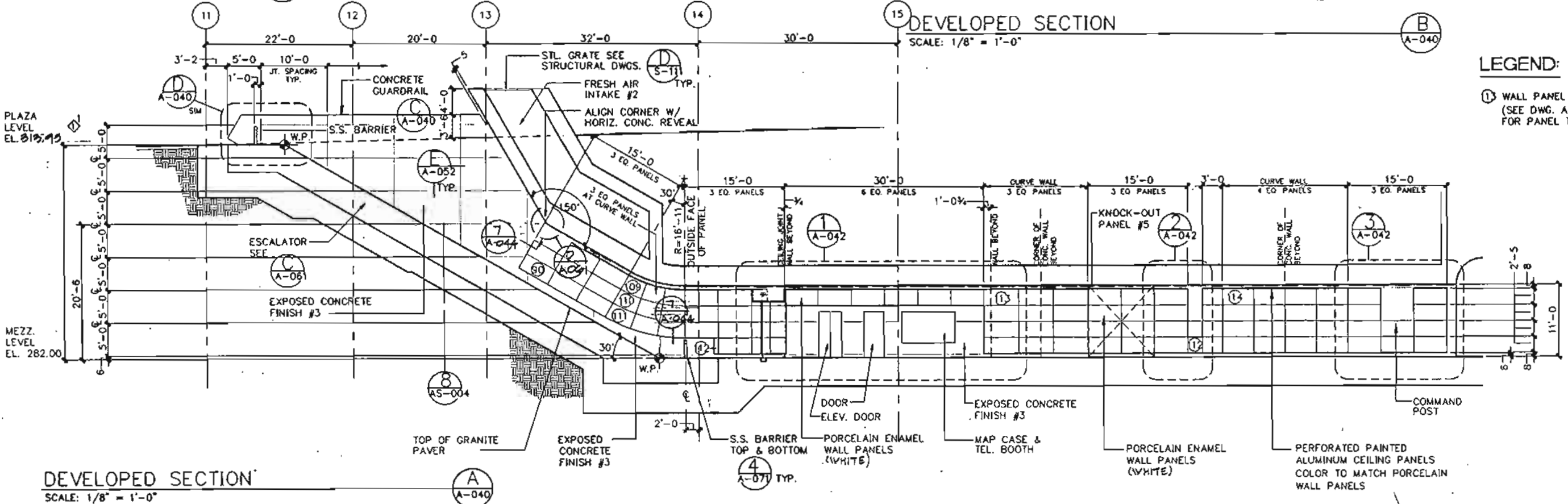


GUARDRAIL SECTION
SCALE: 3/8" = 1'-0"



DEVELOPED SECTION
SCALE: 1/8" = 1'-0"

LEGEND:
① WALL PANEL TYPE (SEE DWG. A-095 FOR PANEL TYPES)



DEVELOPED SECTION
SCALE: 1/8" = 1'-0"

REV	DATE	BY	SUB	APP	DESCRIPTION

DESIGNED BY
DRAWN BY
CHECKED BY
DATE
1 FEB 93

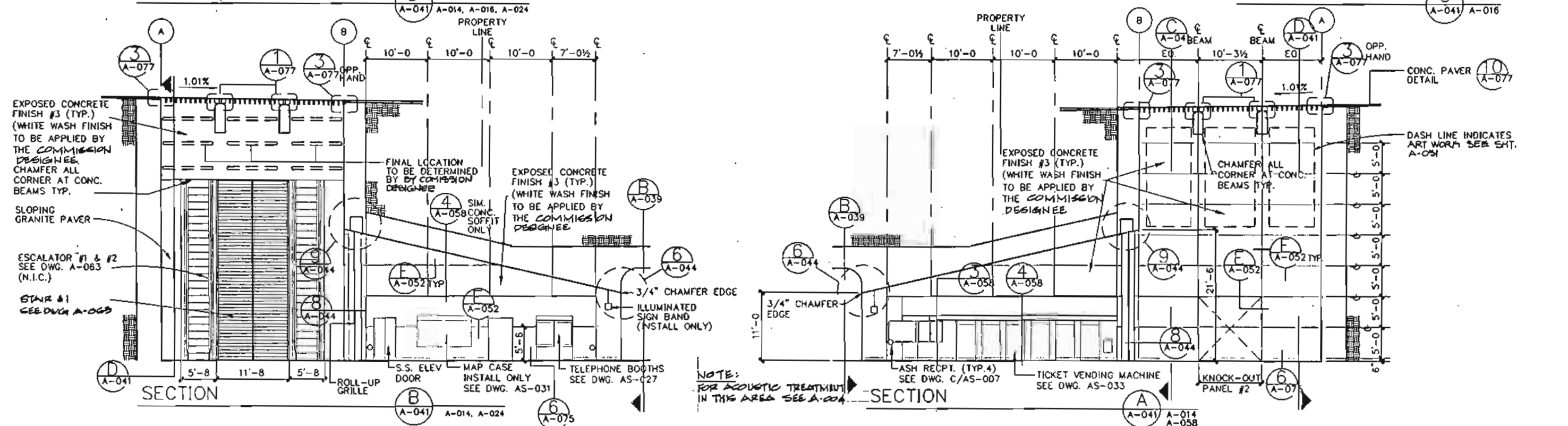
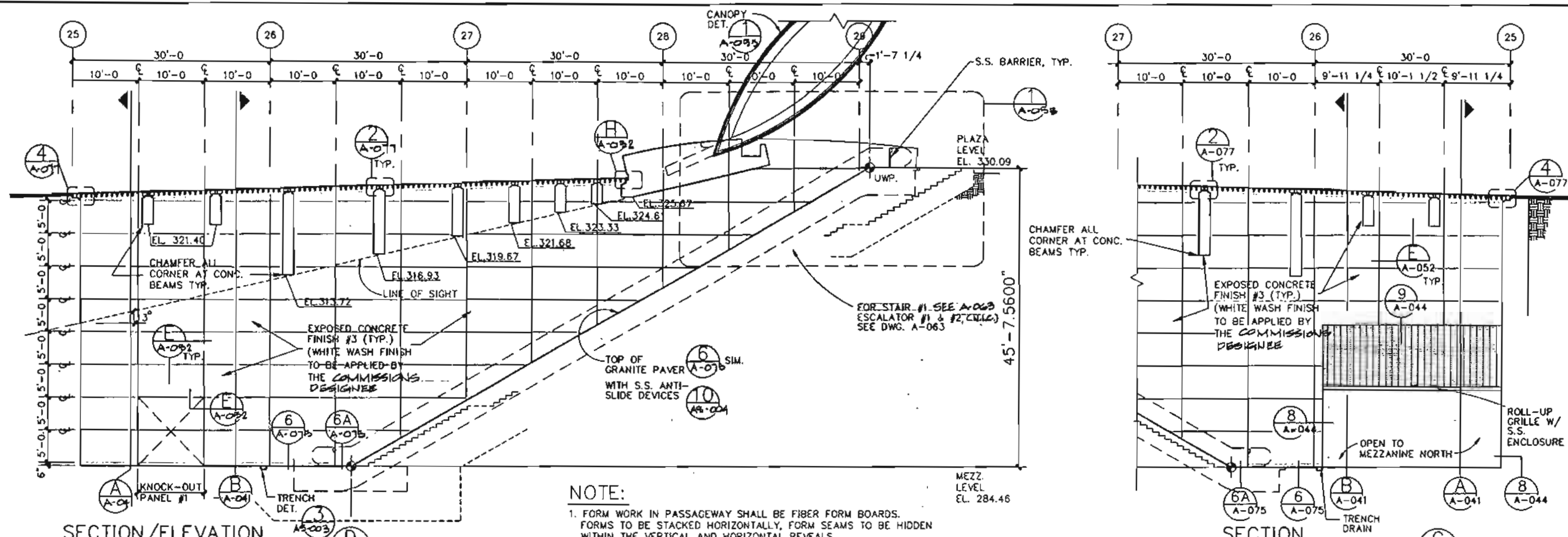
RAIL CONSTRUCTION CORPORATION
METRO RED LINE

STV/SEELYE STEVENSON YALOW & JENSEN
ELLERBE BECKET

ENGINEERING MANAGEMENT CONSULTANTS

LA CBD TO NORTH HOLLYWOOD
VERMONT/SANTA MONICA STATION
PASSAGEWAY SOUTH SECTION/
ELEVATION

CONTRACT NO. B 252
DRAWING NO. A-040
SCALE 3/8" = 1'-0"
SHEET NO. 411



THE PREPARATION OF THIS DRAWING HAS BEEN FINANCED IN PART THROUGH A GRANT FROM THE U.S. DEPARTMENT OF TRANSPORTATION, URBAN MASS TRANSPORTATION ADMINISTRATION, UNDER THE URBAN MASS TRANSPORTATION ACT OF 1964, AS AMENDED, AND IN PART BY THE TAXES OF THE CITIZENS OF LOS ANGELES COUNTY AND OF THE STATE OF CALIFORNIA.				DESIGNED BY <i>M. Wilson</i> DRAWN BY <i>[Signature]</i> CHECKED BY <i>[Signature]</i> IN CHARGE <i>[Signature]</i> DATE 1 FEB 93				CONTRACT NO. B 252 DRAWING NO. A-041 REV 0 SCALE 1/8" = 1'-0" SHEET NO. 412			
REV DATE BY SUB APP DESCRIPTION				ISSUED FOR BID				RAIL CONSTRUCTION CORPORATION METRO RED LINE LA CBD TO NORTH HOLLYWOOD VERMONT/SANTA MONICA STATION PASSAGWAY NORTH SECTIONS/ ELEVATIONS			