



Local News

L.A. Metro Board to Consider Review of Transit Policing

By City News Service

Jun 25, 2020



KFI AM 640 • MORE STIMULATING TALK

[Listen Now on iHeartRadio](#)

LIVE

LOS ANGELES (CNS) - The Los Angeles County Metropolitan Transportation Authority's board of directors today will consider appointing a committee to rethink public safety on the agency's transit system, including alternatives to armed law enforcement response to some incidents.

The motion, co-sponsored by Los Angeles City Councilman Mike Bonin and county Supervisors Janice Hahn and Hilda Solis, urges Metro to develop policies for different responses to nonviolent crimes and other offenses.

"Around the country and all over Los Angeles, people are re-imagining how to provide public safety," Bonin said. "Metro needs to be at the forefront of that and make changes that assure that all of its passengers feel safe. That starts by acknowledging that we cannot rely on an armed police presence for every issue and we need smarter, more effective solutions."

Potential alternatives would include a transit ambassador program that provides staffed presence at Metro facilities and on Metro vehicles as well as social workers, mediators or mental health professionals.

Bonin said jurisdictions around the country are considering similar approaches to public safety. The Los Angeles City Council is examining the possibility of a new emergency-response model that would have trained specialists, rather than police officers, respond to many types of calls, including those regarding homelessness, mental health and substance abuse issues.

The Metro motion calls for the creation of a Transit Public Safety Advisory Committee that would develop the new policies and approaches in consultation with passengers and community members representative of the agency's ridership.

Bonin said it is "crucial" for Metro to make changes, given a history of complaints of racial bias in policy, particularly from younger Black people and Latinos.

"For years, Metro has heard that its system of policing was making huge segments of its passengers feel less safe and feel threatened," he said. "This is our moment to change that."

The board on Thursday is also expected to consider a separate Bonin/Solis motion asking the agency to develop "clear criteria for when suspending service is necessary and appropriate." The motion was introduced in response to Metro's decision to suspend passenger service on May 30, stranding many passengers in the middle of a curfew.

Photo: Getty Images


[View Comments](#)

Sponsored Content

Recommended by



[Photos] Facts About the Legendary Jayne Mansfield You Probably Don't Know

Bob's Hideout



Plastic Surgeon Tells: Doing This Every Morning Can Snap Back Sagging Skin (No Crea...

innerskinresearch.com



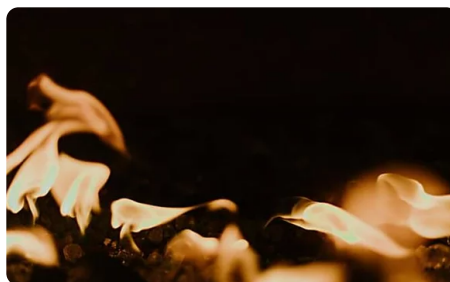
[Photos] Remember Him? You Better Sit Down Before You See What He Looks Like Now

Trivia.com



Tamar Braxton Credits Her Boyfriend David Adeleso For Saving Her Life

KFI AM 640 - Stay Connected in LA and ...



Highway 39 Still Closed After Fire in Angeles National Forest

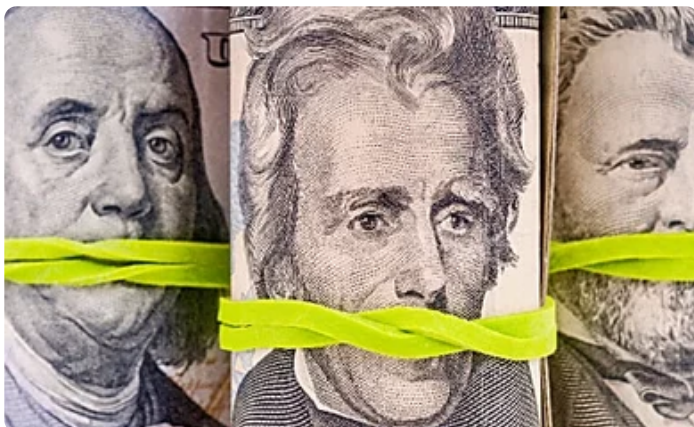
KFI AM 640 - Stay Connected in LA and ...



No, Moms. You're NOT Doing It Wrong. | KFI AM 640 | Dr. Wendy Walsh

KFI AM 640 - Stay Connected in LA and ...

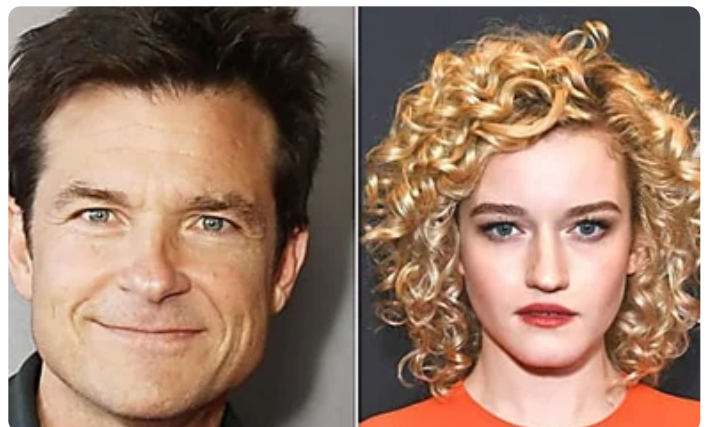
Sponsored Content



Read This Before You Renew Amazon Prime Again

Wikibuv

<https://kfiam640.iheart.com/content/2020-06-25-la-metro-board-to-consider-review-of-transit-policing/>



Canceled: These Shows Won't be Coming Back Next Season.



Investina.com

Download The Free iHeartRadio App

Find a Podcast



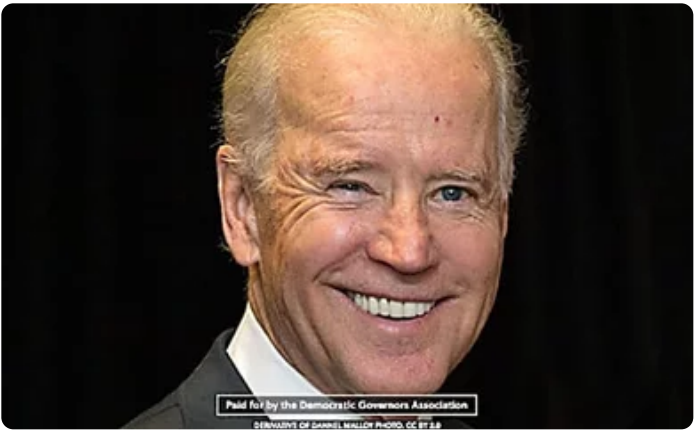
More stimulating talk in Los Angeles and Orange County. Listen to Jennifer Jones Lee on Wake Up Call, Bill Handel Morning Show, Gary and Shannon, John and Ken, Tim Conway Jr, Coast to Coast AM, KFI News and more on KFI AM 640!

[Sitemap](#) | [Contest Rules](#) | [Privacy Policy](#) | [Do Not Sell My Personal Information](#) | [Terms of Use](#) | [Ad Choices](#)  | [KFI Public Inspection File](#)  | [KFI Political File](#) | [EEO Public File](#)

© 2020 iHeartMedia, Inc.

...news,

...green.



The Common Signs of Psoriatic Arthritis

Yahoo Search

Learn more

Quick Poll: Will You Vote for Biden

Democratic Governors Association

Recommended by

iHeartRadio
Week of August 3rd
Week In History



Local News

National News

iHeartSoCal

Chargers Central

Contact

Advertise with KFI AM 640, Get Results