

WEST SANTA ANA BRANCH TRANSIT CORRIDOR PROJECT

Draft EIS/EIR Appendix S Final Hazardous Materials Impact Analysis Report Part 2 of 3

Prepared for:



Metro[®]

Los Angeles County

Metropolitan Transportation Authority

Prepared by:



WSP USA, Inc.

444 South Flower Street

Suite 800

Los Angeles, California 90071



June 2021

APPENDIX D HISTORICAL AERIAL PHOTOGRAPHS



GS VASK

I-17

2-28-68

2885
SER. NO. 1011
L.F.L.
1011 m



2-28-63

1-39

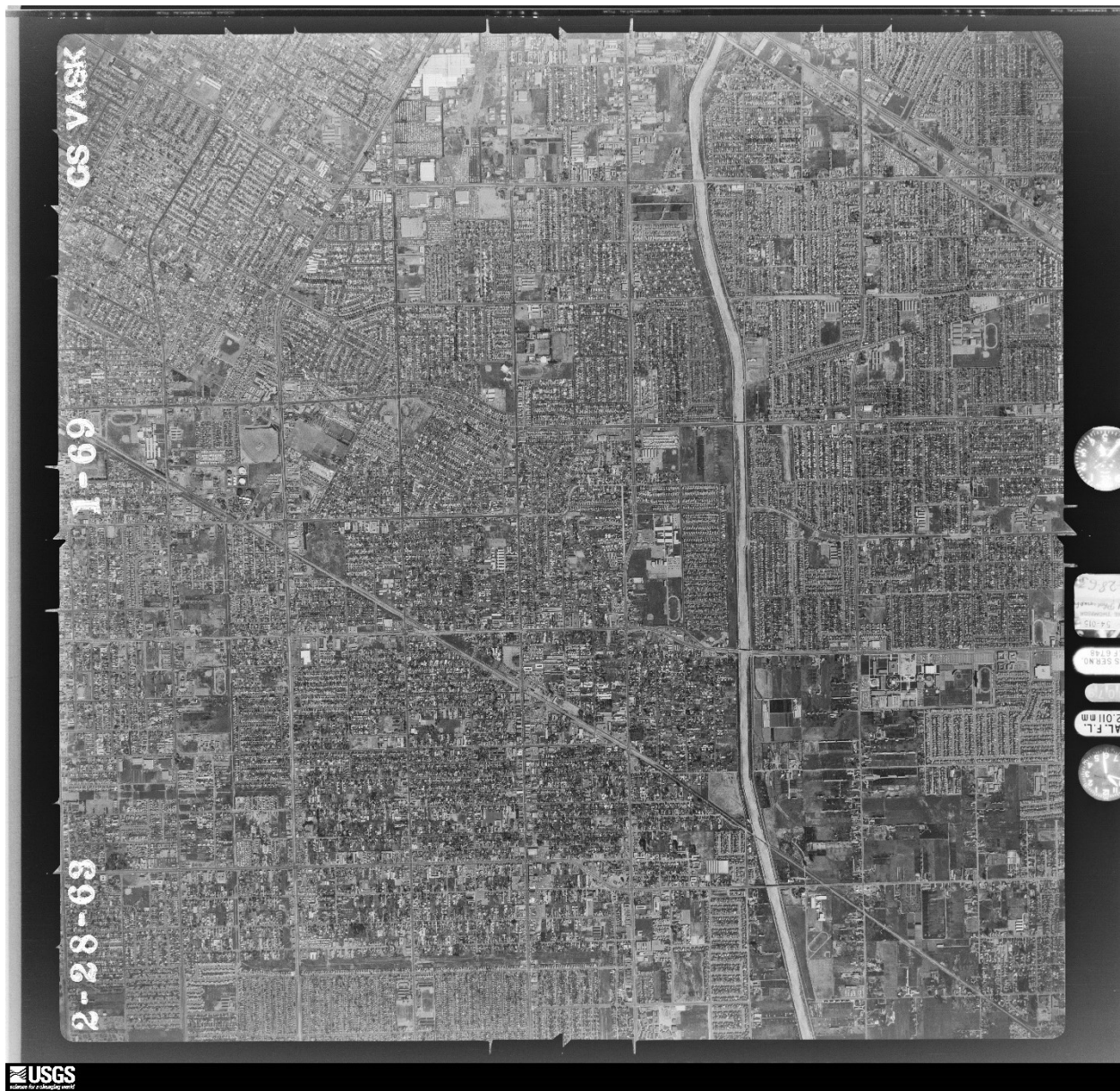
GS VASK

L.F.L.
01mm

SER NO.
174

286





CS VASK

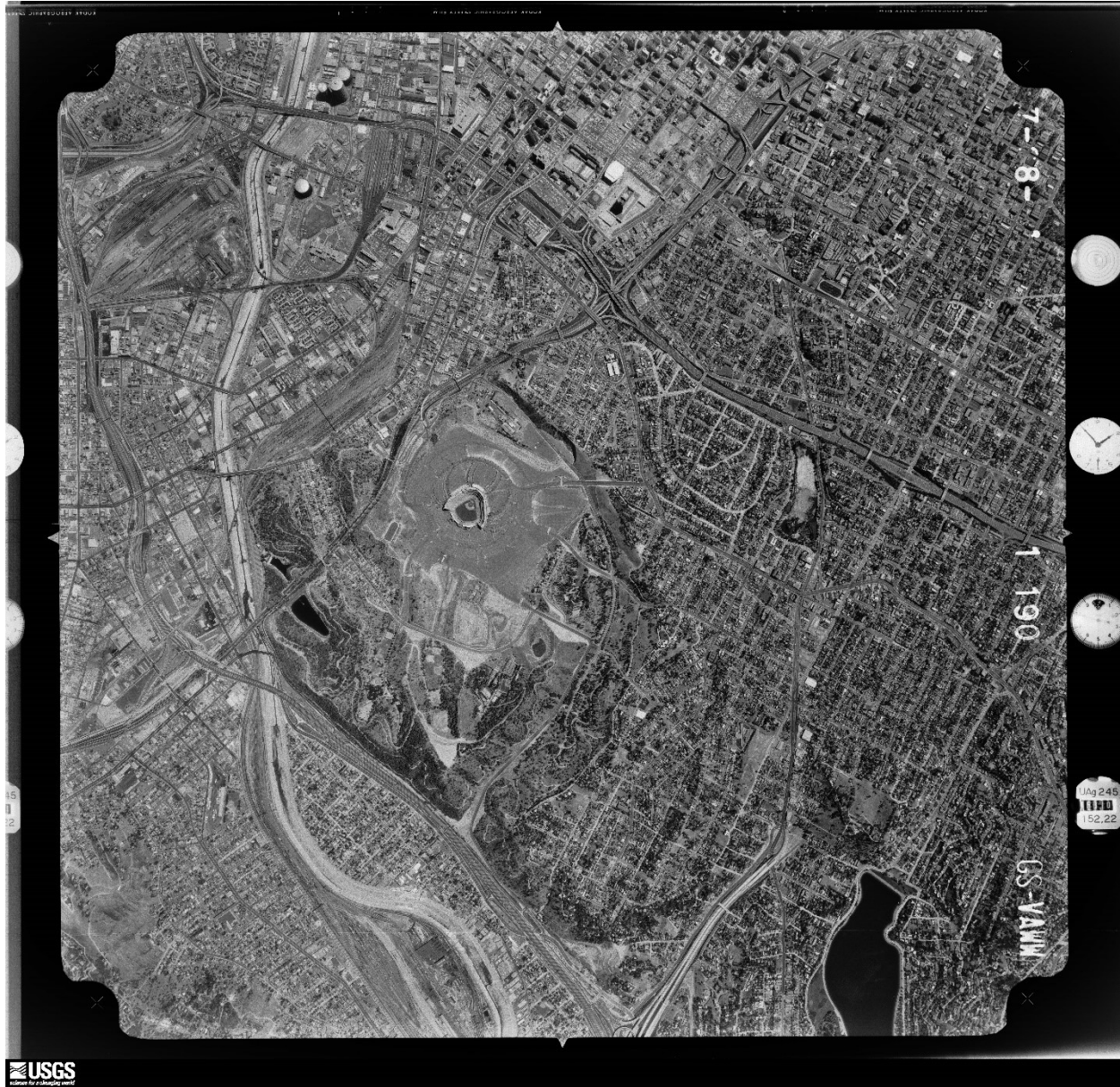
1-69

2-28-69

USGS
FOR A COMPLETE LIST

AL.F.L.
2.011mm
STATION





7-8-

1 190

GS-YAWM

15
12

Jag 245
152,22

USGS
Science For a Changing Planet



CS-YAKW

1 217

7-28-64



Ug 245
152, 22

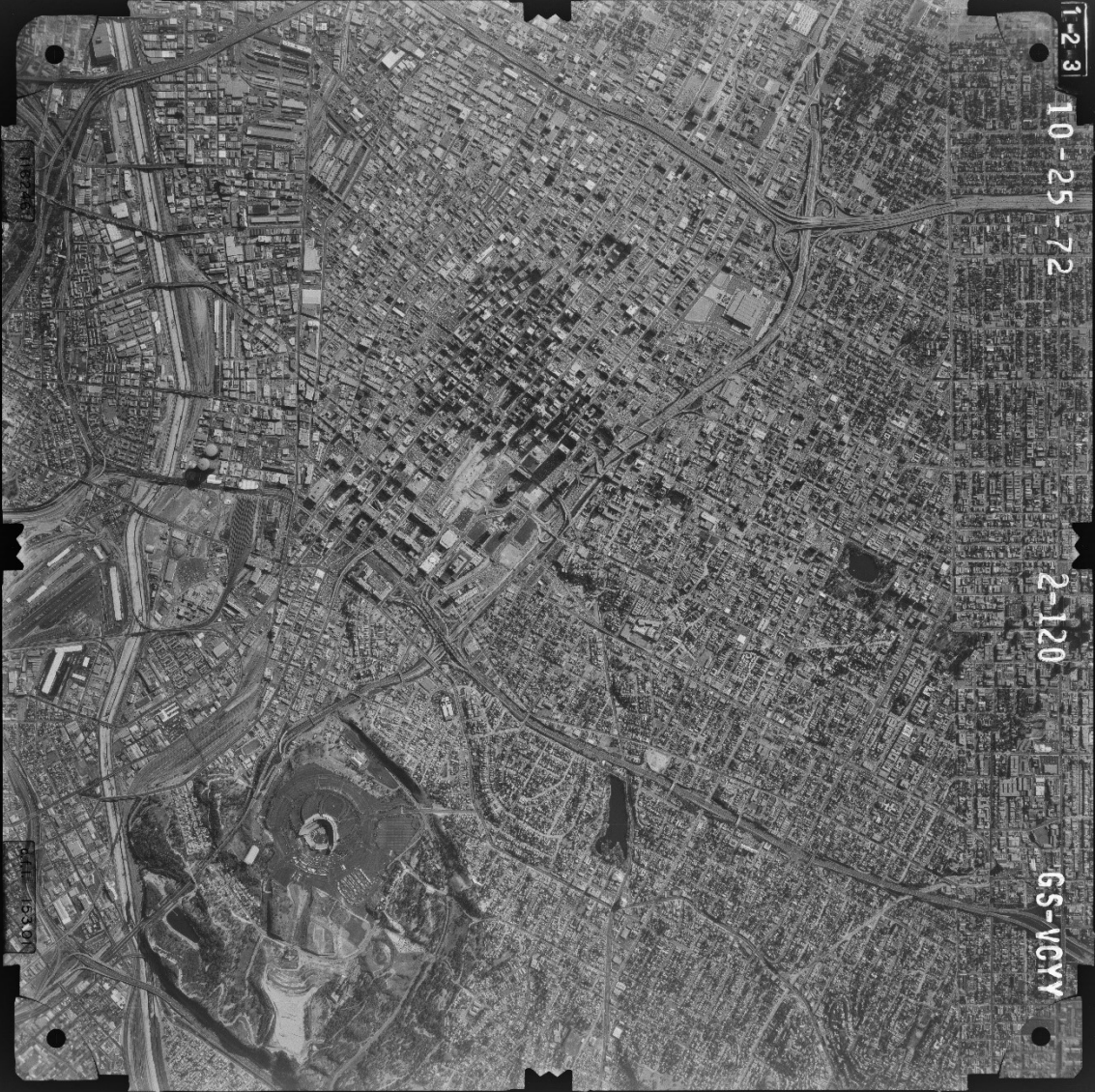


7-28-64

2-22

CS-VARW





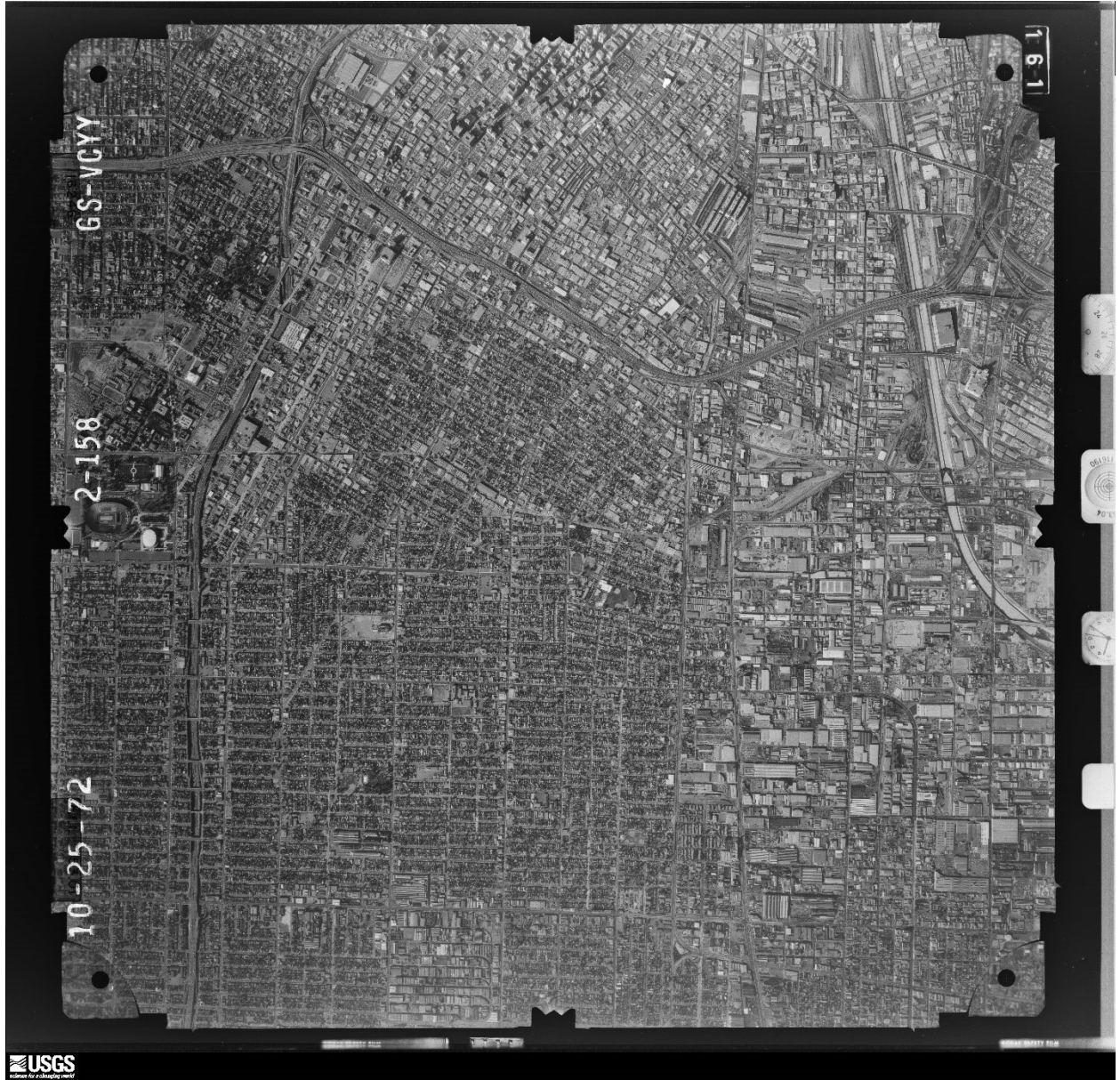
1-2-3

10-25-72

2-120

6S-VGYY

44-10307



GS-VCYY

2-158

10-25-72

161

USGS

FOR MORE INFORMATION CONTACT THE NATIONAL CENTER FOR AIR PHOTOGRAMMETRY AND REMOTE SENSING





GS-V0YY

3-12

10-30-72

0-14





GS-VCY Y

3-65

10-30-72

153.04
116130

153.01

116246



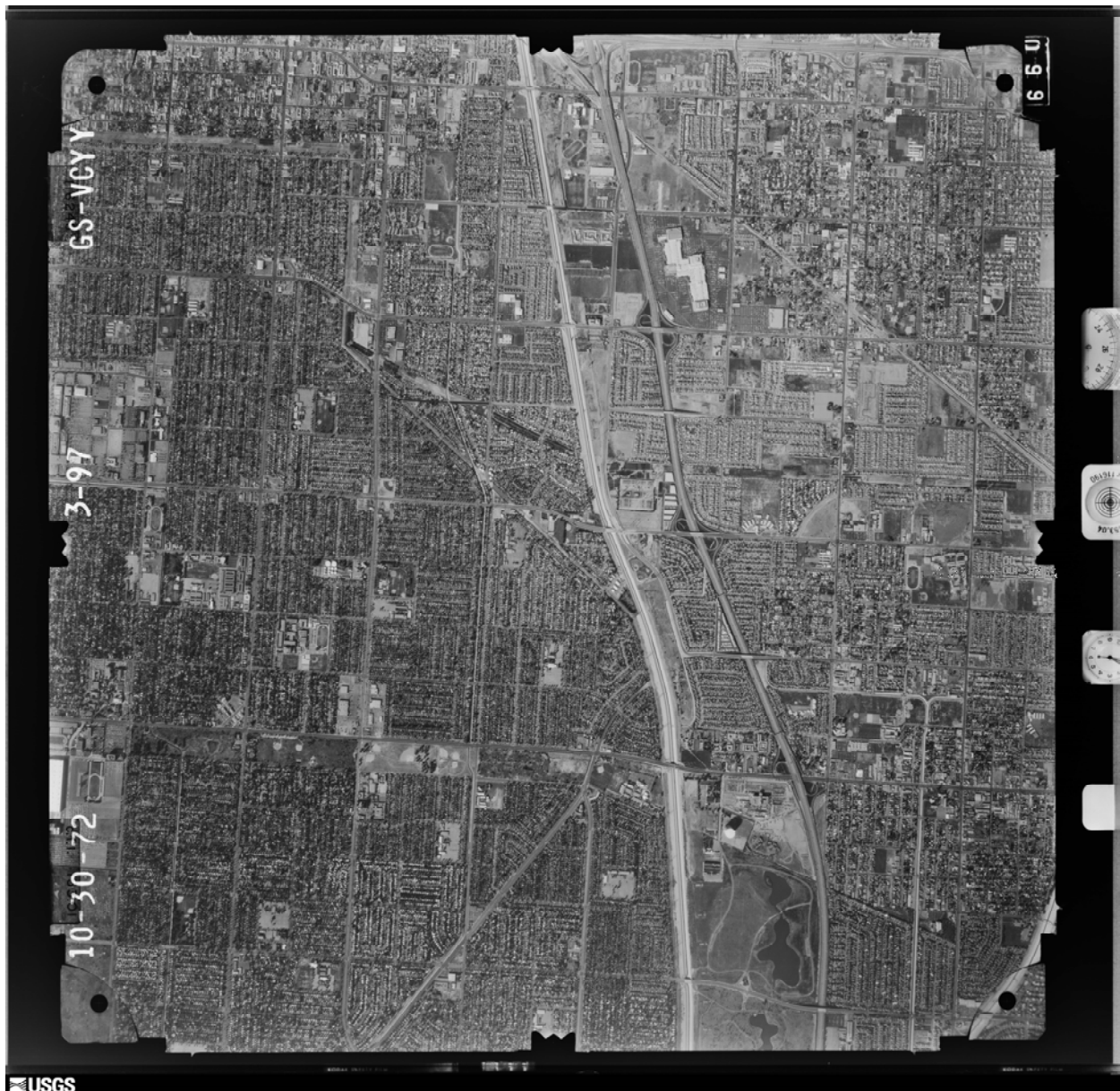
GS-VCYY

3-66

10-30-72

068





USGS



GS-VP

18-14

8-1-52

USGS

GS-VP

18-14

8-1-52



8-2-52

18-34

18-35

USGS

USGS

USGS

USGS

USGS



GS-VP

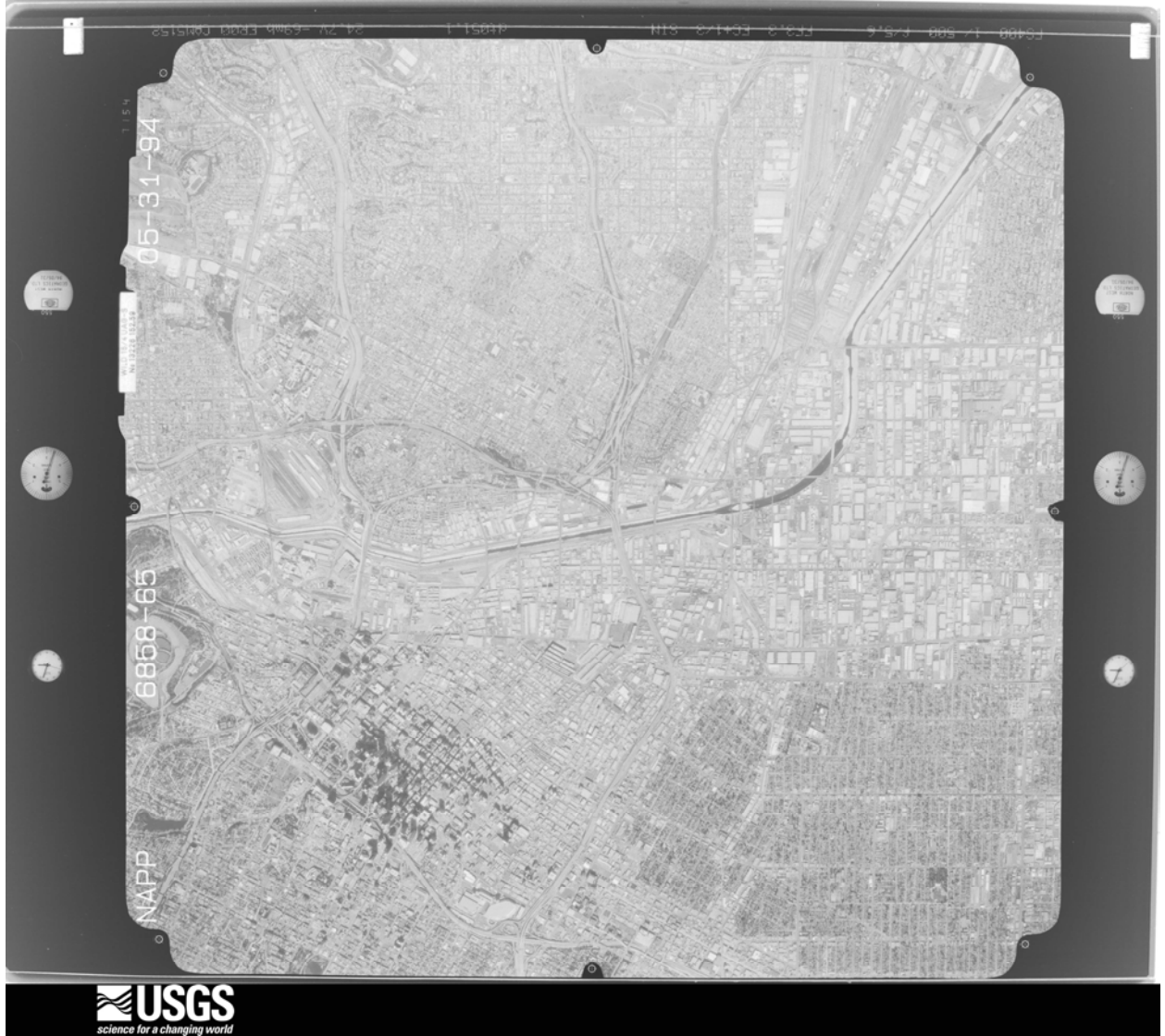
18-59

8-2-52

38-W-12RS-M840-12AF-15JUNE 48-1215-157,3-40000-PR38

37-W-12RS-M840-15JUNE 48-1215-157,3-40000-PR36



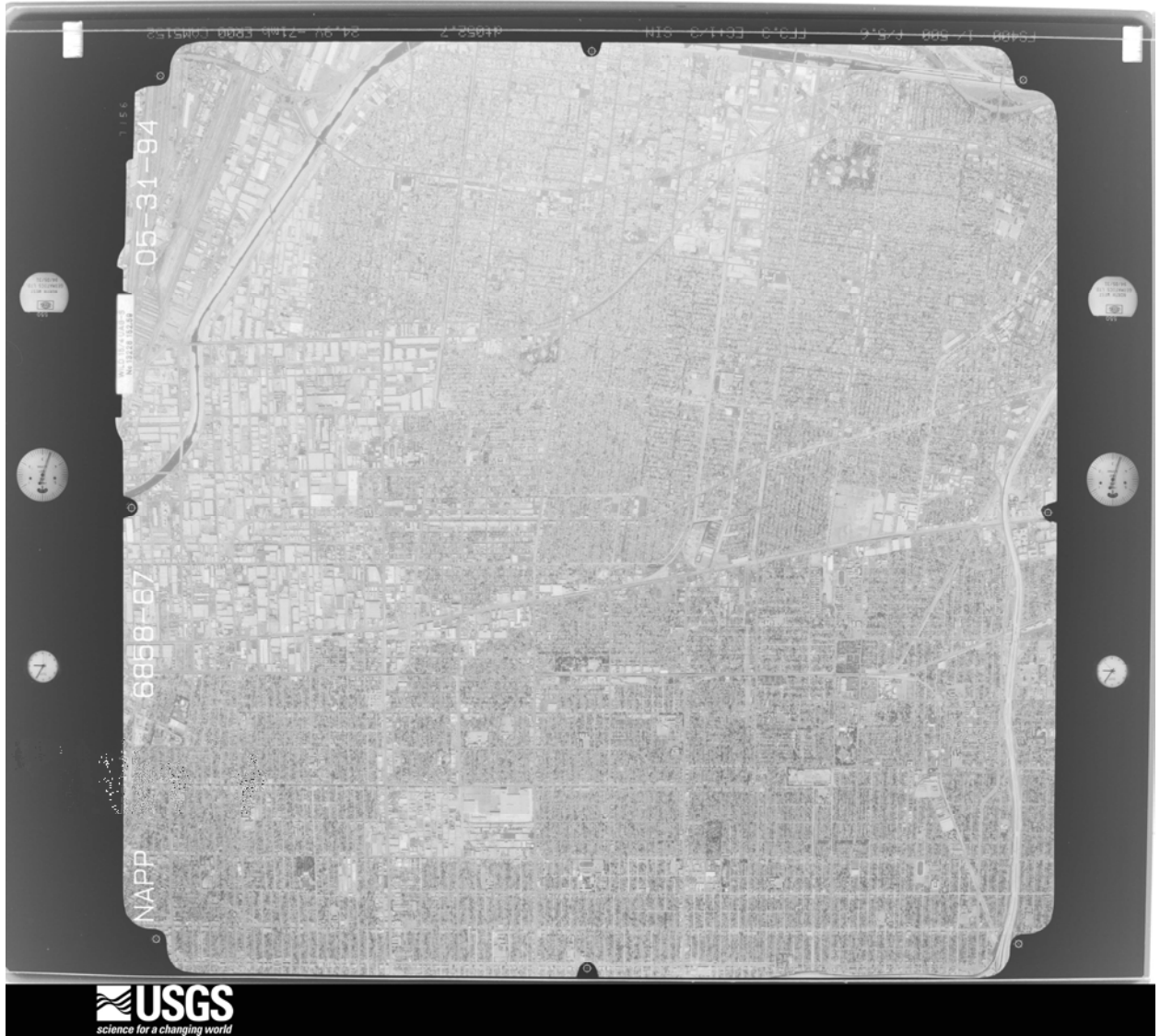


05-31-94

6858-85

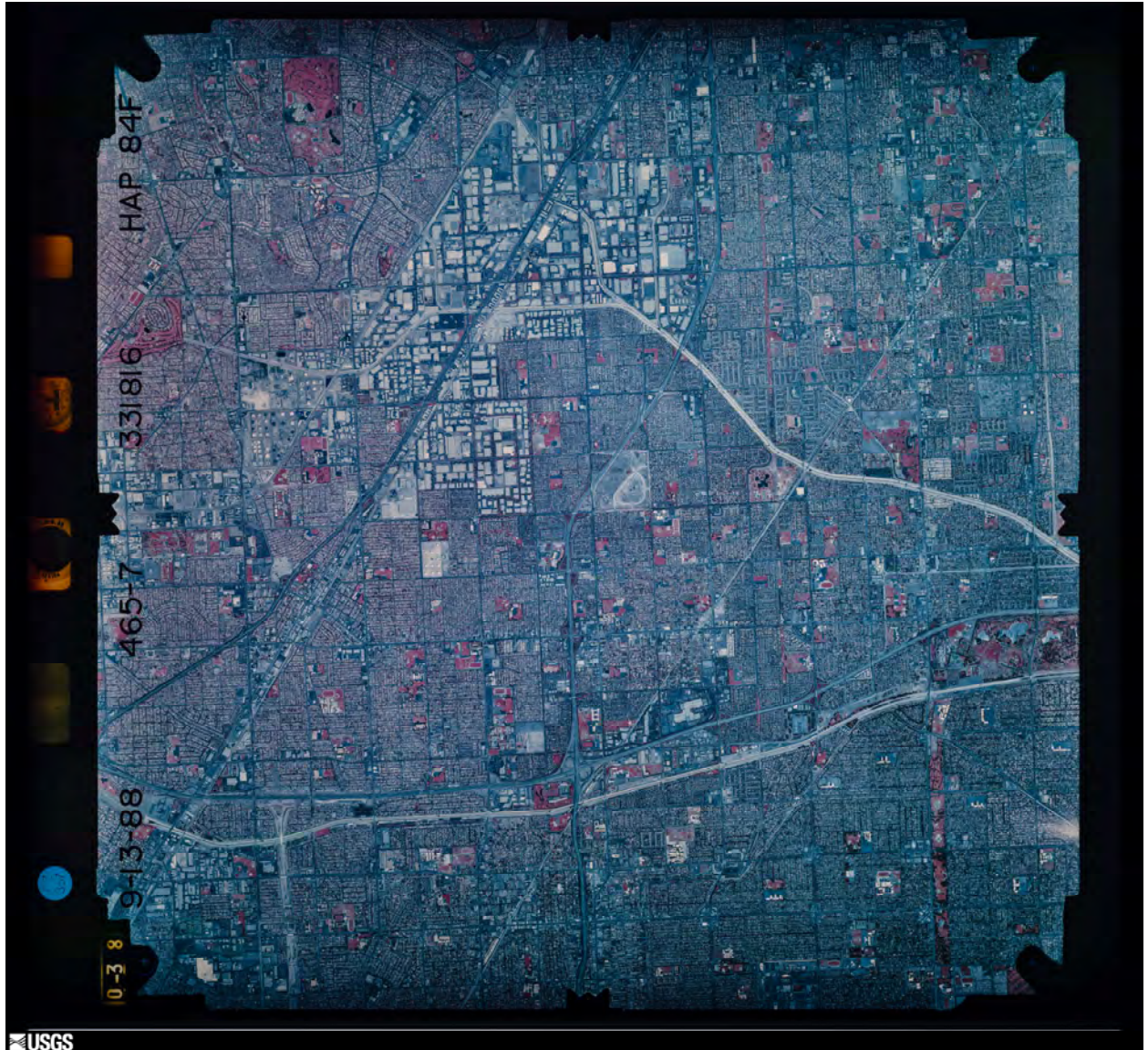
NAPP

USGS
science for a changing world





ES488 1 450 6 25 6
FC 3 5041 2 31H
4858 5
25 11 - 72mb 5300 1 085152





9-13-88

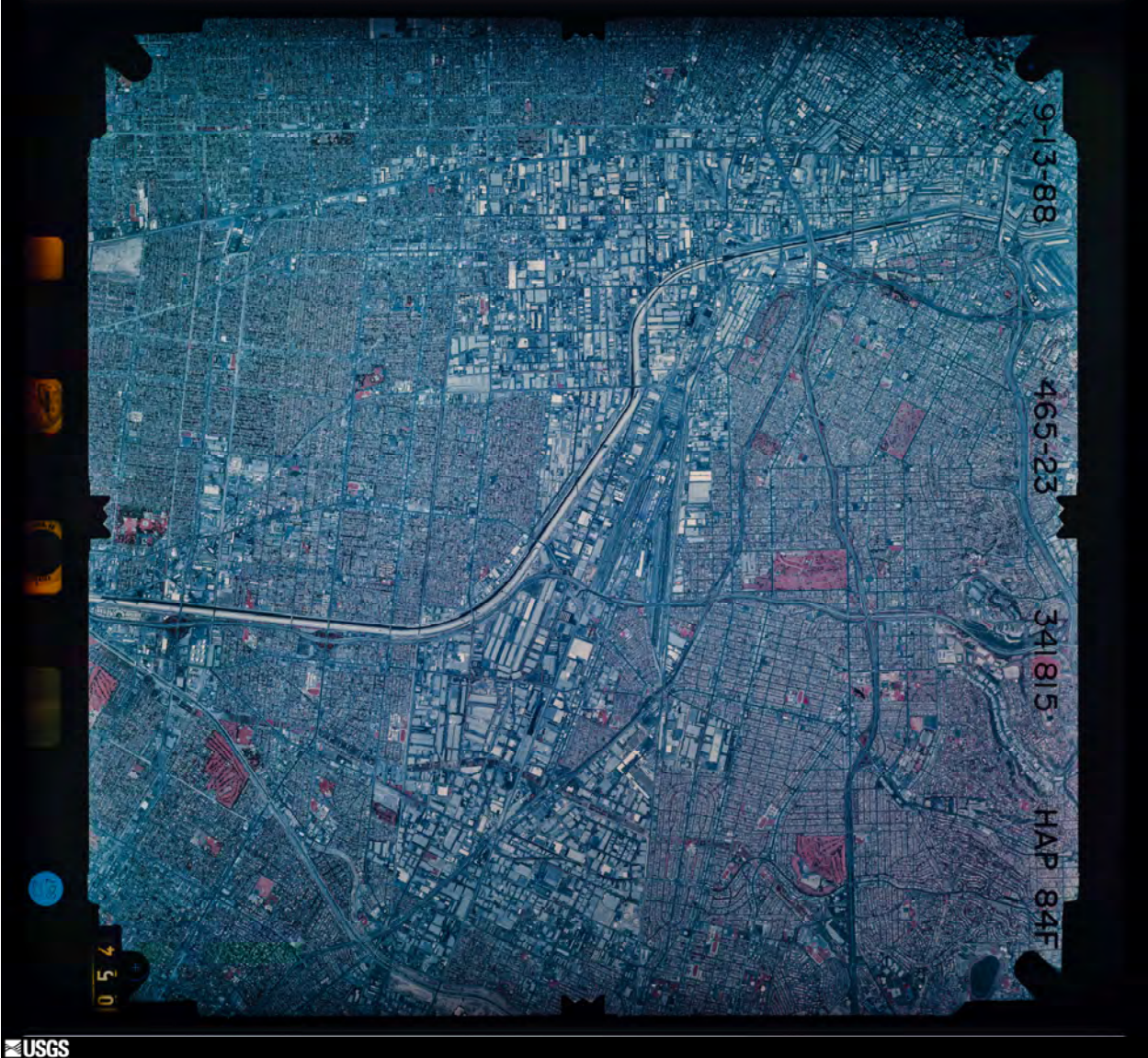
465-2

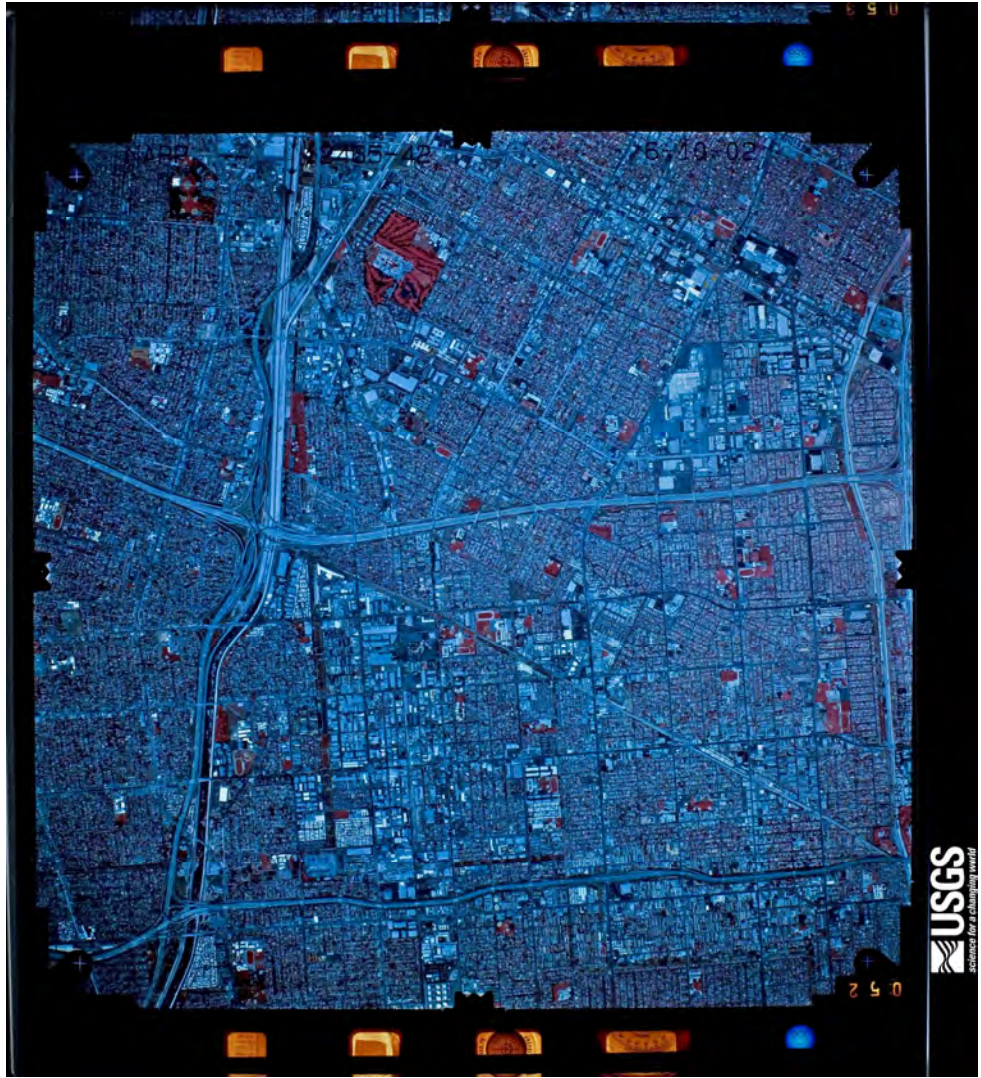
331815

HAP 84F

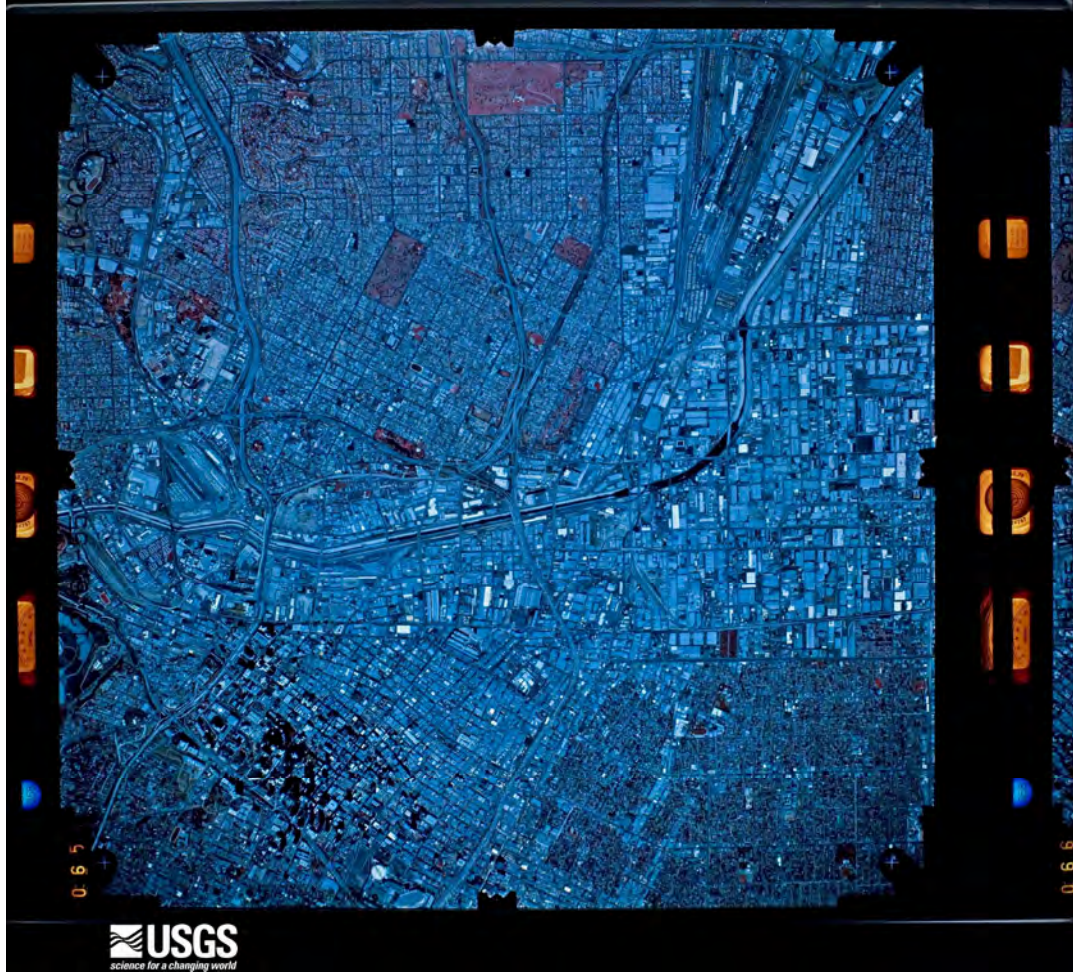
2 5 0

USGS



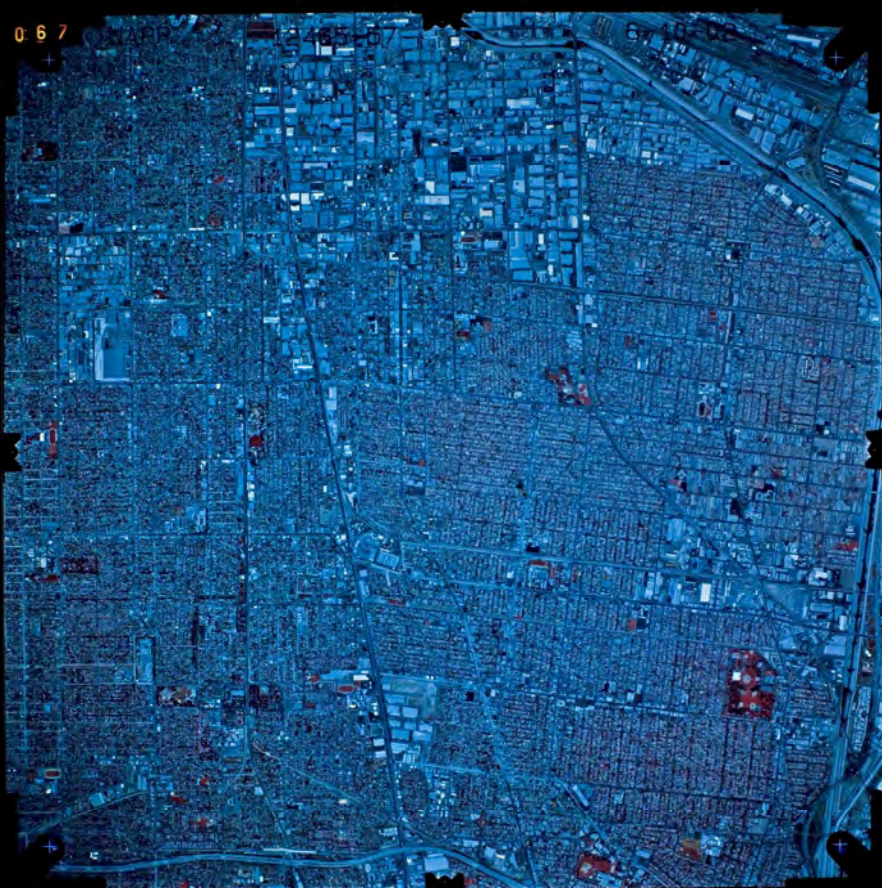


USGS
science for a changing world



USGS
From Earth to Sky

0 6 7



0 6 8

