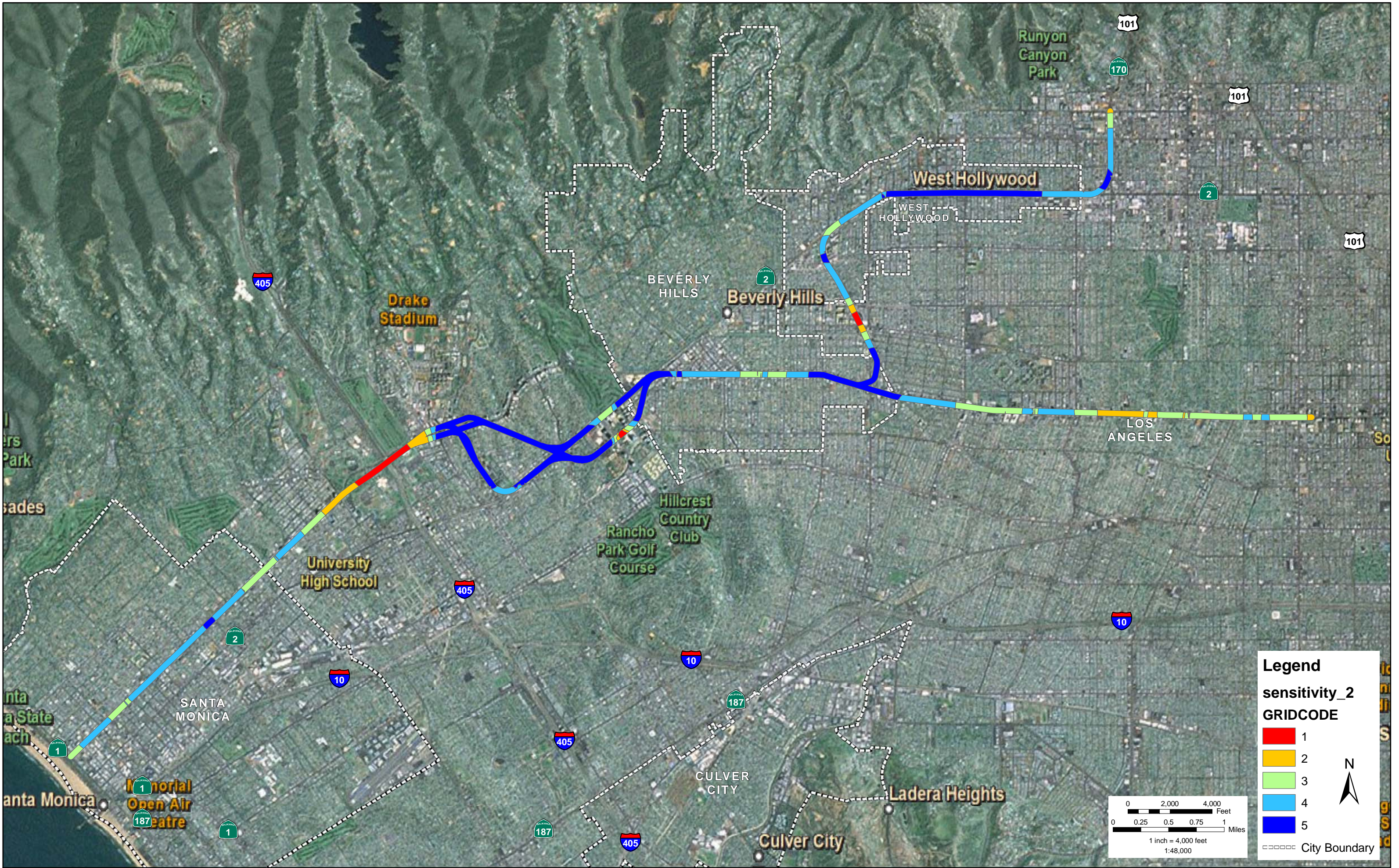


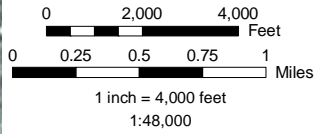
Appendix C
GIS Archaeological Predictive Study

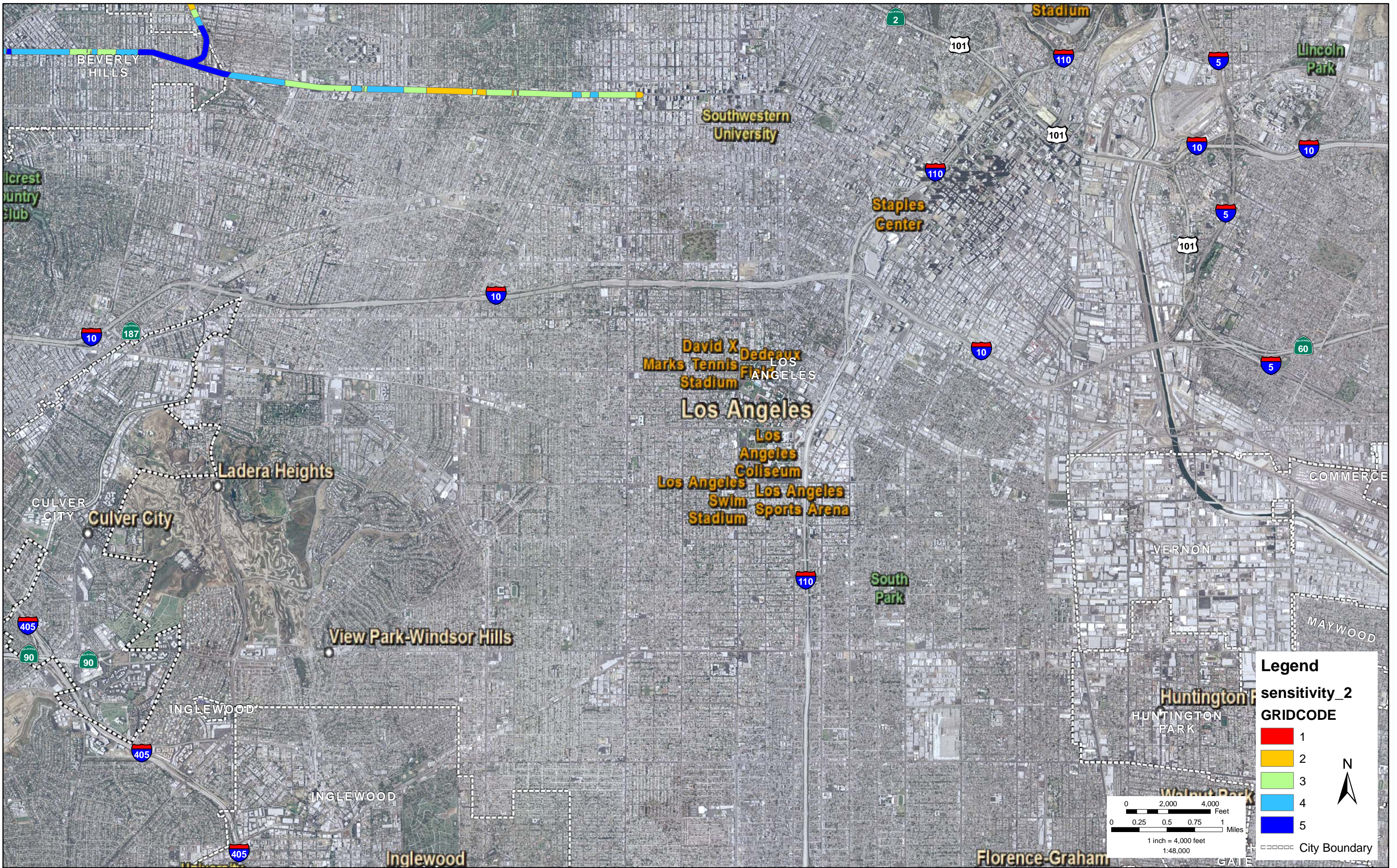


Legend
sensitivity_2
GRIDCODE

Red	1
Yellow	2
Light Green	3
Light Blue	4
Dark Blue	5

City Boundary





BEVERLY HILLS

Southwestern University

Staples Center

David X Marks Tennis Stadium

Los Angeles

Los Angeles Coliseum

Los Angeles Swim Stadium, Los Angeles Sports Arena

Ladera Heights

Culver City

View Park-Windsor Hills

INGLEWOOD

INGLEWOOD

Inglewood

Stadium

Lincoln Park

South Park

VERNON

MAYWOOD

Huntington Park

HUNTINGTON PARK

Walnut Park

Florence-Graham

GATE

Legend

sensitivity_2
GRIDCODE

- 1
- 2
- 3
- 4
- 5

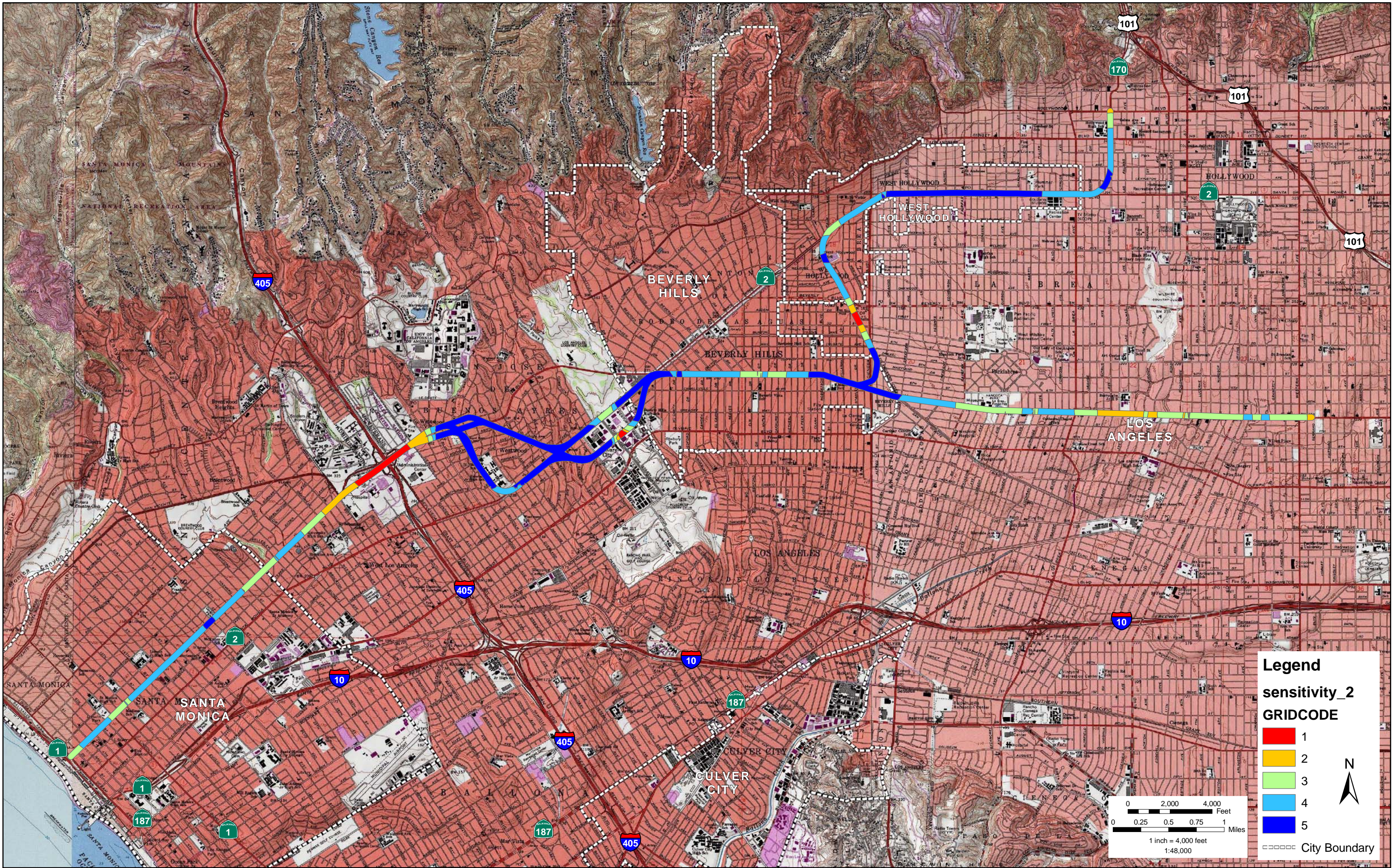
City Boundary

0 2,000 4,000 Feet

0 0.25 0.5 0.75 1 Miles

1 inch = 4,000 feet
1:48,000





Date: August 10, 2009

To: Laurie Solis

From: Mark Neal

Subject: **MTA Westside Expansion Predictive Model Feasibility**

Executive Summary

The purpose of this memorandum is to report on the results of a study of the feasibility of creating a geographical information system (GIS)-based model to predict the potential for the presence of previously undiscovered historic and prehistoric resources within the Area of Potential Effect (APE) of the Metro Transit Authority's proposed Westside Expansion of the Metro Rail system.

During this study, a variety of modeling methods and data sources were considered and tested. Most avenues of investigation proved to be unfruitful and, as a result, no method was discovered that had potential to yield a robust, sophisticated, and statistically testable model. As an alternative, a simplified judgmental deductive model based on the density of historic era standing architecture has been created and is presented here.

Background

Though predictive models are generally associated with new technology such as advanced computer systems and spatially-oriented database systems such as GIS, the concept is not new to archaeology. Beginning in the 1950s, archaeologists shifted their methodological focus from the study of single sites to that of regions (Dalla Bona 1994; Trigger 1989). Those studies not only represented an expansion of the geographical dimensions of archaeological investigations, but also expanded the degree to which diverse scientific disciplines were consulted in order to create more comprehensive theories of settlement strategies. The resulting models of settlement systems were most commonly based on environmental data and were created by teams of scientists consisting of archaeologists, zoologists, geologists, botanists, and other specialists (Trigger 1989). The advent of computer-based GIS did foster significant improvements in predictive modeling, primarily in two ways. It greatly increased the ease with which archaeologists could manage large geographic datasets and also initiated a fluorescence of publicly available geographic data, which increased access to especially high-resolution environmental datasets.

Generally speaking, archaeological predictive models are produced by two methods —inductive and deductive. Deductive models are based entirely on theory, previous findings, and ethnological analog (Kvamme 2006). Commonly produced using manual map overlays, these are perhaps the most common models currently employed in urban planning. The strength of these models is that they provide a way of capturing experts' knowledge and experience concerning the relative cultural

sensitivity of regions and making that information readily accessible and comprehensible to experts in other disciplines, such as urban planning.

With the advent of sophisticated computers, inductive models have come into wider use. Based on empirical correlations between geographic phenomena and the locations of known cultural resources, inductive models are most powerful when they are created using large geographic datasets, large numbers of known resources, and sophisticated spatial statistics to test the significance of correlations between the two. Models with inductive characteristics have an additional advantage in that they are commonly created using more robust mathematical theory such as Weights of Evidence and Logistic Regression.

However, it is noteworthy that the most advanced and powerful models are created using a combination of inductive and deductive reasoning. In those models, the types of datasets considered for the model are determined deductively by considering their potential to address hypotheses derived from current anthropological and archaeological theory. The hypotheses are tested using spatial datasets and statistical analysis, and the spatial extent of the final layers of evidence are created based on the strength of their statistical correlation to a training set of known resources. An additional advantage of such models lies in the ease with which they can be updated and improved as the datasets employed are refined and new theories are published.

Methods

The following paragraphs describe the layers of evidence that were considered and the reasoning behind their acceptance or rejection for use in the predictive model. In that very different conditions affect the spatial organization of prehistoric vs. historic sites, those two classes of resources will be considered separately.

TRAINING POINTS

In statistically based probabilistic predictive models such as the one proposed here, a dataset of points indicating known locations of the phenomena to be predicted is used to determine the strength of statistical relationships between geographic regions and the phenomena. In this case the phenomena to be predicted are the locations of cultural resources. As with most statistical analysis, larger datasets generally produce more reliable results. Though there are no set limits as to how few training points one can use in a given model and still yield useable results, some general guidelines can be defined. Generally speaking, a dataset of at least 70 training points is required to yield reliable results, though one widely accepted model was created with only 21 training points (Neal 2007). In order to test the final model, it is most advantageous to have an additional dataset of at least that many training points, thereby doubling the number of data points required. In addition, it is the goal of this model to predict the potential for the presence of both historic and prehistoric resources. As those two classes of resources would likely be located according to very different criterion, each would require the minimum number of points necessary to create a complete model. Therefore, the absolute minimum number of training points required to create this model would be 42 points representing historic archaeological resources and 42 representing prehistoric resources.

The current dataset of cultural resources within .25 miles of the archaeological APE for the project consists of four historic archaeological resources and four prehistoric resources. Therefore, there are too few known resources to support the creation of an inductive predictive probabilistic model. However, the possibility of the creation of a deductive, judgmental model is not eliminated by condition.

ENVIRONMENTAL DATASETS INVESTIGATED TO PREDICT PREHISTORIC ARCHAEOLOGICAL SITES

Fortunately, a comprehensive predictive model of prehistoric archaeological sites has recently been produced for an area quite similar to the current project area. The criteria and findings of that model can serve to guide the construction of the currently proposed model. Neal (2007) created an environmentally-based predictive model of village sites within the Santa Ynez Valley, which is the traditional home of one of the groups of Chumash people who inhabited that region from prehistoric to current times. As the environment and social structure of the Tongva people of the current project area are similar to the Chumash, it can be assumed that criteria shaping settlement patterns would also be similar between the two groups. In his study, Neal determined that the most critical criteria for site selection were:

- Proximity to reliable sources of fresh water
- Areas of less than 15° slope.
- Areas within 200 meters of ecotone boundaries.
- Areas with high environmental diversity.

Unfortunately, current efforts were unable to yield adequate datasets to address those criteria in the current project area. Each are discussed briefly below.

Proximity to reliable sources of fresh water – The National Hydrology Dataset as well as early maps were consulted in an effort to create a reliable dataset of reliable water sources. Unfortunately, the local stream network has been disrupted to such a degree and beginning such a long time ago that reconstruction of a defensible depiction of what the local hydrologic environment would have been like in prehistoric times is well beyond the scope of this project. Should such a dataset become available, this aspect of the model could be reconsidered.

Areas of less than 15° slope – The National Elevation dataset was consulted and slope derived for the project area. The project area is depicted as lying primarily in a broad, flat plain and as such there are virtually no areas that do not meet this criterion. Therefore, the slope dataset as it is would add no predictive power to a predictive model.

Areas within 200 meters of ecotone boundaries and areas with high environmental diversity – The source data to address both these criteria is the GAP Landcover dataset. In that dataset, the project area falls entirely within an area designated simply as “Urban.” As no other sources were found to accurately depict the boundaries of ecological regions within the project area before the onset of urbanization, it was not possible to incorporate either of these criteria into the model.

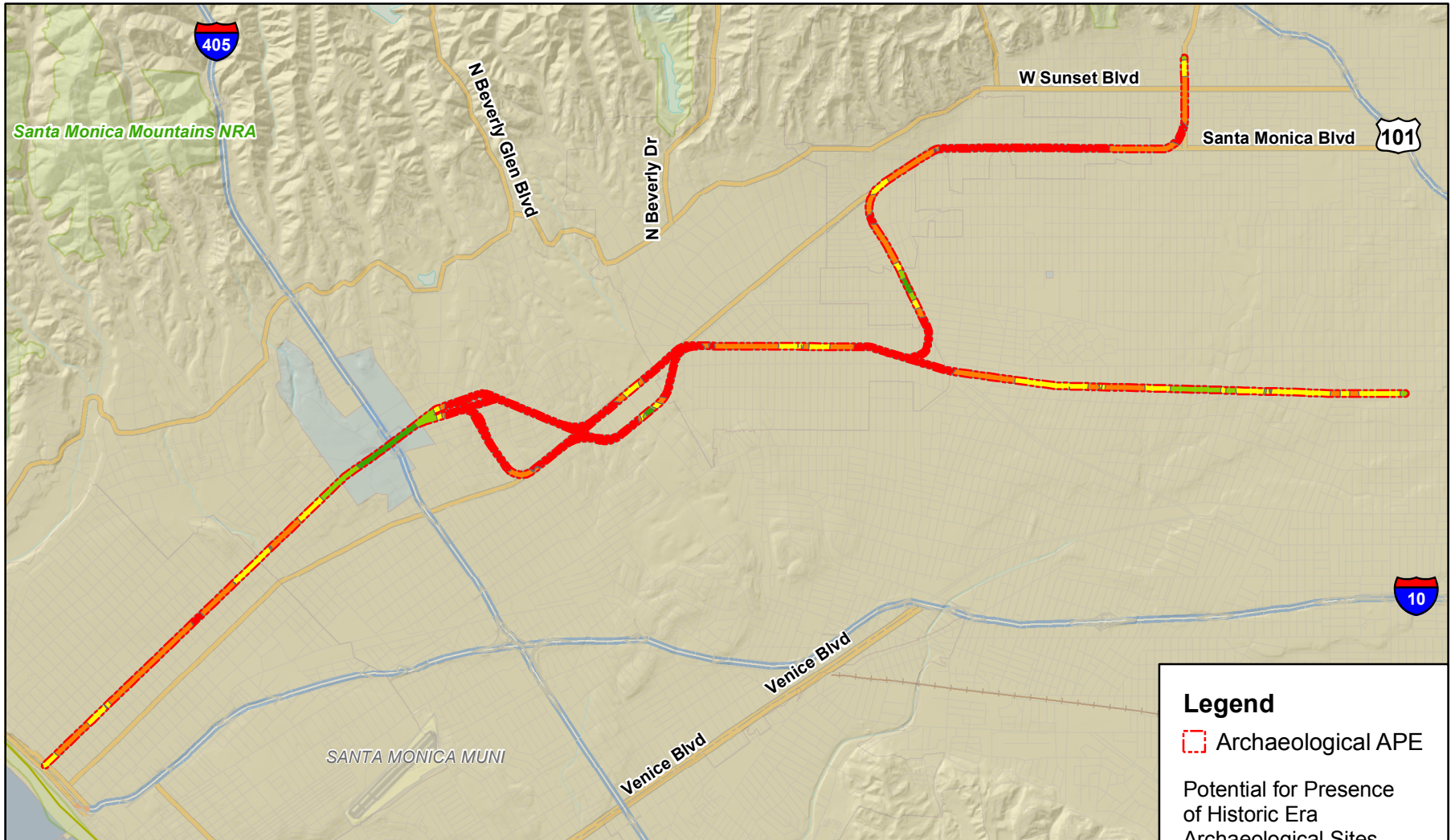
DATASETS CONSIDERED IN ORDER TO PREDICT HISTORIC ARCHAEOLOGICAL SITES.

Virtually any site occupied by humans for habitation or other purposes might yield cultural resources in the form of buried trash pits, privies, wells, remnants of razed architecture, etc. It can be assumed that areas that have remained largely unchanged within the past 50 or more years would be more likely to yield undisturbed archaeological deposits of the historic era.

To address that hypothesis, a cadastral dataset of land parcels within the project area was used. A point dataset of the centroids of each parcel attributed with the built date of the building located on each was created. Based on that layer, a surface reflecting the relative densities of historic-era structures was generated using the ArcGIS Point Density tool. The resulting raster was classified by Quantiles into five classes of relative potential for the presence of undisturbed historic era archaeological resources. That raster was converted into a vector-dataset in order to enhance its portability. A map of the resulting zones is included at the end of this memo (Figure 1).

CONCLUSIONS

The current effort has succeeded in producing a dataset that can be useful in providing a geographic representation of areas expected to have higher and lower potentials for the presence of historic era archaeological resources. Whereas the strength of the resulting model cannot be statistically quantified nor can it predict prehistoric archaeological sites, it is nonetheless a useful tool. Concepts such as density of historic era structures are generally difficult to assess without maps such as the one provided herein. This modeling effort allows that data to be accessed easily and allows it to be overlaid onto other datasets, thereby enhancing the decision making tools available to planners. In addition, when further hypotheses concerning the locations of significant resources are generated and more environmental datasets are made available, they can be incorporated into this model to enhance its overall accuracy and precision. That ability to constantly build on and improve a model is one of the most powerful aspects of predictive models within the modern urban planning environment.



Legend

Archaeological APE

Potential for Presence of Historic Era Archaeological Sites

- Low
- Moderately Low
- Moderate
- Moderately High
- High

MTA
Westside Expansion

URS Corporation

Potential for Presence of Historic Era Archaeological Sites Based on Density of Standing Historic Era Structures



Figure 1

Works Cited

Kvamme, K. L.

2006 There and Back Again: Revisiting Archaeological Locational Modeling. In *GIS and Archaeological Site Location Modeling*, edited by M. W. Mehrer and K. L. Wescott. Taylor and Francis Group, Boca Raton, Florida.

Dalla Bona, L.

1994 *Cultural Heritage Resources Predictive Modelling Project, Volume 3: Methodological Considerations*. Lakehead University: Center for Archaeological Resource Prediction, Thunder Bay, Ontario.
<<http://modelling.pictographics.com/pdfs/carpvol3.pdf>>.

Neal, Mark L

2007 A Predictive Probabilistic Model of Village Site Location Within the Santa Ynez Valley, California. On file, University of California Santa Barbara library.

Trigger, B. G.

1989 *A history of archaeological thought*. Cambridge University Press, Cambridge Cambridgeshire ; New York.

cc: [Click **here** and type cc]

Appendix D
Rancho La Brea Bibliography

RANCHO LA BREA BIBLIOGRAPHY

- Abel, O. 1912. Grundzuge der palaeobiologie der wirbeltiere. Stuttgart, 8 vols., 708 p.
- Abel, O. 1926. Amerikafahrt. Eindrücke, beobachtungen und studien eines naturforschers auf eine reise nach Nordamerika und Westindien. 8 vols., Jena, 462 p.
- Agenbroad, L. D. and J. I. Mead. 1986. Large carnivores from Hot Springs Mammoth Site, South Dakota. *National Geographic Research* 2(4):508-516.
- Akersten, W. A. 1979. Genesis of Rancho La Brea fossil deposits. Abstract, Annual Meeting of the Southern California Academy of Sciences 56:28.
- Akersten, W. A. 1980. Fossils in asphalt. *Science* 208:550.
- Akersten, W. A. 1984. Metro Rail meets the Tar Pits. *Terra Magazine* 23(1):17-20.
- Akersten, W. A. 1985. Canine function in Smilodon (Mammalia: Felidae: Machairodontinae). *Natural History Museum of Los Angeles County Contributions in Science*, 356:1-22.
- Akersten, W. A. 1985. Of dragons and sabertooths. *Terra Magazine* 23(5):13-19.
- Akersten, W. A. 1991. Entrapping pools or flowing streams at Rancho La Brea? Both! Abstract, Annual Meeting of the Southern California Academy of Sciences 1991(1).
- Akersten, W. A., T. M. Foppe and G. T. Jefferson. 1984. Dietary samples from large extinct herbivores, Rancho La Brea. Abstract, Annual Meeting of the Southern California Academy of Sciences 36:18.
- Akersten, W. A., T. M. Foppe and G. T. Jefferson. 1988. New source of dietary data for extinct herbivores. *Quaternary Research* 30(1):92-97.
- Akersten, W. A., R. L. Reynolds and A. E. Tejada-Flores. 1979. New mammalian records from the late Pleistocene of Rancho La Brea. *Bulletin of the Southern California Academy of Sciences* 78(29):141-143.
- Akersten, W. A., C. A. Shaw and G. T. Jefferson. 1983. Rancho La Brea: status and future. *Paleobiology* 9(3):211-217.
- Albareda, R-M. 1992. Etude biogeochimique de restes fossiles du Geiseltal, de Rancho La Brea et de Teghenif: Extraction et caracterisation de leur matiere organique. Masters Thesis, Laboratoire de Paléontologie, Academie de Montpellier, Universite des Sciences et Techniques du Languedoc, 21 p.
- Anderson, E. 1968. Fauna of the Little Box Elder Cave, Converse County, Wyoming. *University of Colorado Studies, Earth Science Series* 6:1-59.
- Andrews, R. C. 1956. All about strange beasts of the past. New York: Random House, 146 p.
- Anonymous. 1871. A skull of a badger (Taxidea) from four feet beneath the surface at Los Angeles, California, in asphaltum beds. *Proceedings of the California Academy of Science* 4:139.
- Anonymous. 1915. Rancho La Brea's fossil beds. *Standard Oil Bulletin* 2(11):3-6.
- Anonymous. 1933. Book Review: The cats of Rancho La Brea. *Carnegie Institution of Washington News Service Bulletin, School Edition* 3(2):10-16.
- Antonius, O. 1933. Über einen Pferdeschädel aus dem Rancho La Brea. *Verhandlinge Zoologische-Botanische Gessellschaft, Wien* 83:39-40.

- Anyonge, W. 1992. Body mass and locomotor adaptations in large extinct and extant carnivores. Abstract, *Journal of Vertebrate Paleontology* (Supplement to #3) 12(8):16A.
- Arnold, R. 1907. The Los Angeles oil district, southern California. *Bulletin of the United States Geological Survey* 309:138-202.
- Arnold, R. and R. Anderson. 1907. Metamorphism by combustion of the hydrocarbons in the oil-bearing shale of California. *Journal of Geology* 15(8):750-758.
- Ashworth, A. C. 1979. Quaternary Coleoptera studies in North America: past and present. IN: *Carabid beetles: their evolution, natural history, and classification*, T. L. Erwin, G. E. Ball and D. R. Whitehead, editors, Dr W. Junk by Publishers, pp. 395-406.
- Axelrod, D. I. 1967. Quaternary extinctions of large mammals. *University of California Publications in Geological Sciences* 74:1-42.
- Azzaroli, A. 1966. Pleistocene and living horses of the Old World. *Palaeontographica Italica* 61:1-15.
- Bandy, O. L. and L. Marincovich, Jr. 1973. Rates of late Cenozoic uplift, Baldwin Hills, Los Angeles, California. *Science* 181:653-654.
- Barrows, A. G. 1970. New excavations for fossils at Rancho La Brea, Los Angeles. *Mineral Information Service* 23(1):14-15.
- Bedrossian, T. L. 1975. Vertebrate fossils and the history of animals with backbones. *California Geology* 28(11):234-259.
- Bell, C. J. and R. G. Dundas. 1993. Fossil lizards from Rancho La Brea in the collections of the University of California Museum of Paleontology. *PaleoBios* 15(2):14-17.
- Berger, R. and W. F. Libby. 1966. UCLA radiocarbon dates V. *Radiocarbon* 8:467-497.
- Berger, R. and W. F. Libby. 1968. UCLA radiocarbon dates VIII. *Radiocarbon* 10(29):402-416.
- Berger, R., R. Protsch, R. L. Reynolds, C. Rozaire and J. R. Sackett. 1971. New radiocarbon dates based on bone collagen of California Paleo-Indian. *Contributions of the University Archaeological Research Facility, Department of Anthropology, Berkeley*, 12:43-49.
- Berta, A. 1985. The status of *Smilodon* in North and South America. *Natural History Museum of Los Angeles County Contributions in Science* 370:1-15.
- Bischoff, J. L. and R. J. Rosenbauer. 1981. Uranium series dating of human skeletal remains from the Del Mar and Sunnyvale sites, California. *Science* 213:1003-1005.
- Black, C. C. 1992. From the Director. *Terra Magazine* 31(1):2. (Introduction to Rancho La Brea edition of *Terra Magazine*)
- Bohlin, B. 1940. Food Habit of the Machaerodonts, with special regard to *Smilodon*. *Bulletin of the Geological Institute, Upsala* 28:157-174.
- Bohlin, B. 1947. The sabretoothed tigers once more. *Bulletin of the Geological Institute, Upsala* 32:11-20.
- Borell, A. E. 1936. A modern La Brea tar pit. *Auk* 53:298-300.

- Bovard, J. F. 1907. Notes on Quaternary Felidae from California. University of California Publications, Bulletin of the Department of Geological Sciences 5(10):155-170. (TYPE, Berkeley: Smilodon californicus sp. nov.)
- Branning, T. 1977. Oily grave of extinction. Union Oil Company, California Seventy Six 56(5):32-36.
- Brattstrom, B. H. 1953. The amphibians and reptiles from Rancho La Brea. Transactions of the San Diego Society of Natural History 11:365-392.
- Brattstrom, B. H. 1954. The fossil pit-vipers (Reptilia: Crotalidae) of North America. Transactions of the San Diego Society of Natural History 3:31-46.
- Brattstrom, B. H. 1991. Paleoecology of Rancho La Brea: a clue to global warming and the drought? Abstract, Annual Meeting of the Southern California Academy of Sciences 1991(23).
- Bright, M. 1965. California radiocarbon dates. University of California Los Angeles Archaeological Survey 7:363-375.
- Bromage, T. G. and S. Shermis. 1981. The La Brea Woman (HC 1323): descriptive analysis. Society of California Archaeology, Occasional Papers 3:59-75.
- Brown, C. A. 1960. Palynological Techniques. Baton Rouge: Louisiana State University, 188 p. (RLB, pp. 115-117).
- Bryan, W. A. 1927. A Pleistocene park in the making. Los Angeles Museum Graphic 1(3):77-82.
- Burroughs, H. 1938. Pleistocene reborn: prehistoric beasts feature of Los Angeles park. Nature 31(6):329-332.
- Camp, C. L. 1917. An extinct toad from Rancho La Brea. University of California Publications, Bulletin of the Department of Geological Sciences 10(17):287-292. (TYPE, Berkeley: Bufo nestor sp. nov.)
- Camp, C. L. 1970. Earth song, a prologue to history. Palo Alto, California: American West Publishing Company. 192 p.
- Campbell, Jr., K. E. 1992. The teratorns. Terra Magazine 31(1):24.
- Campbell, Jr., K. E. 1993. A new look at the Rancho La Brea avifauna. Abstract, Journal of Vertebrate Paleontology (Supplement to #3) 13:28A.
- Campbell, Jr., K. E. 1995. A review of the cranes (Aves: Gruidae) of Rancho La Brea, with the description of a new species. Los Angeles County Museum of Natural History Contributions in Science 452:1-13. (TYPE, Page: Grus pagei sp. nov.)
- Campbell, Jr., K. E. and E. P. Tonni. 1980. A new genus of teratorn from the Huayquerian of Argentina (Aves: Teratornithidae). In Papers in Avian Paleontology honoring Hildegard Howard, K. E. Campbell, Jr., editor, Los Angeles County Museum of Natural History Contributions in Science 330:59-68.
- Campbell, Jr., K. E. and E. P. Tonni. 1982. Preliminary observations on the paleobiology and evolution of teratorns (Aves: Teratornithidae). Journal of Vertebrate Paleontology 1(3-4):265-272.
- Campbell, Jr., K. E. and E. P. Tonni. 1983. Size and locomotion in teratorns (Aves: Teratornithidae). The Auk 100:390-403.
- Chandler, A. C. 1914. Antelopes in the fauna of Rancho La Brea. Bulletin of the Geological Society of America 25:155.

- Chandler, A. C. 1916. A study of the skull and dentition of *Bison antiquus* Leidy, with special reference to material from the Pacific coast. University of California Publications, Bulletin of the Department of Geological Sciences 9(11):121-135.
- Chandler, A. C. 1916. Notes on *Capromeryx* material from the Pleistocene of Rancho La Brea. University of California Publications, Bulletin of the Department of Geological Sciences 9(10):111-120.
- Chandler, A. C. 1916. The Bison of Rancho La Brea. Abstract, Bulletin of the Geological Society of America 27:170.
- Churcher, C. S. 1984. The status of *Smilodontopsis* (Brown, 1908) and *Ischyrosmilus* (Merriam, 1918). A taxonomic review of two genera of sabretooth cats (Felidae, Machairodontinae). Royal Ontario Museum, Life Science Contribution 140:1-59.
- Compton, L. V. 1934. New bird records from the Pleistocene of Rancho La Brea. Condor 36(5):221-222.
- Compton, L. V. 1937. Shrews from the Pleistocene of the Rancho La Brea asphalt. University of California Publications, Bulletin of the Department of Geological Sciences 24(5):85-90.
- Cox, S. M. 1979. Preliminary census of the Ursidae from Rancho La Brea. Abstract, Annual Meeting of the California Academy of Sciences 89:45.
- Cox, S. M. 1991. Size range or sexual dimorphism in *Arctodus simus* from Rancho La Brea. Abstract, Annual Meeting of the California Academy of Sciences 1991(15).
- Cox, S. M. 1992. The short-faced bear. Terra Magazine 31(1):25.
- Cox, S. M. and G. T. Jefferson. 1988. The first individual skeleton of *Smilodon* from Rancho La Brea. Current Research in the Pleistocene 5:66-67.
- Crawford, D. L. 1912. The petroleum fly in California. Pomona College Journal of Entomology 4(2):687-697.
- Crowder, R. E. and R. A. Johnson. 1963. Recent developments in the Jade-Buttram area of the Salt Lake Oil Field. California Oil and Gas, Summary of Operations 49(1):53-60.
- Danforth, C. H. 1931. Section H (Anthropology) and related organizations. Science 74:117-118.
- Das, S., A. Doberenz and R. W. G. Wyckoff. 1967. The lipids in fossils. Comparative Biochemistry and Physiology 23:519-525.
- Davidson, A. 1914. The oldest known tree. Bulletin of the Southern California Academy of Sciences 13(1):14-16.
- Dawson, W. R. 1948. Records of fringillids from the Pleistocene of Rancho La Brea. Condor 50(2):57-63. (TYPE, Page: *Pipilo angelensis* sp. nov.)
- Deevey, E. S., L. J. Gralenski and V. Hoffren. 1959. Yale natural radiocarbon measurements, IV. Radiocarbon 1:144-172.
- DeMay, I. S. 1941. Quaternary bird life of the McKittrick asphalt, California. Carnegie Institution of Washington Publication 530:35-60.
- DeMay, I. S. 1941. Pleistocene bird life of the Carpinteria asphalt, California. Carnegie Institution of Washington Publication 530:61-76.

- Denton, W. 1875. On the asphalt bed near Los Angeles, California. *Proceedings of the Boston Society of Natural History* 18:185-186.
- Dice, L. R. 1925. Rodents and Lagomorphs of the Rancho La Brea deposits. *Carnegie Institution of Washington Publication* 349:119-130.
- Doberenz, A. R. 1967. Ultrastructure of fossil dentinal collagen. *California Tissue Research* 1:166-169.
- Doberenz, A. R. and P. Matter III. 1965. Nitrogen analysis of fossil bones. *Comparative Biochemistry and Physiology* 16:253-258.
- Doberenz, A. R. and R. W. G. Wyckoff. 1967. Fine structure in fossil collagen. *Proceedings of the National Academy of Science* 57:539-541.
- Dorr, Jr., J. A. 1956. Terrors of the tar pits - two toenail sketches. *Michigan Alumni Quarterly Review* 62(18):220-224.
- Douglas, D. 1952. Measuring low-level radioactivity. *General Electric Review* 55:16-20.
- Doyen, J. T. and S. E. Miller. 1980. Review of Pleistocene darkling ground beetles of the California asphalt deposits (Coleoptera: Tenebrionidae: Zopheridae). *Pan-Pacific Entomology* 56(1):1-10.
- Duckler, G. 1995. Deciphering the pathological relevance of skull abnormalities in late Pleistocene saber-tooth cats. Abstract, *Journal of Vertebrate Paleontology* 15(Supplement to #3):27A.
- Duckler, G., F. Hertel and B. Van Valkenburgh. 1994. Paleopathologies of late Pleistocene dire wolves from Rancho La Brea. Abstract, *Journal of Vertebrate Paleontology* 14(Supplement to #3):23A.
- Duque, J. and L. G. Barnes. 1975. Smilodon, is this how you looked? *Terra Magazine* 14(1):18-24.
- Dundas, R. G. 1992. The demise of the late Pleistocene dire wolf (*Canis dirus*): implications for assessing carnivore extinctions. Abstract, *Journal of Vertebrate Paleontology* (Supplement to #3) 12(52):27A.
- Eaton, J. E. 1928. Divisions and duration of the Pleistocene in southern California. *Bulletin of the American Association of Petroleum Geologists* 12(2):111-141.
- Eberhart, H. 1961. The cogged stones of southern California. *American Antiquity* 26(3):361-370.
- Edholm, C. L. 1914. Prehistoric man of Los Angeles. *Technical World Magazine* 22(2):216-217.
- Emerson, S. B. and L. Radinsky. 1980. Functional analysis of sabertooth cranial morphology. *Paleobiology* 6(3):295-312.
- Emslie, S. D. 1988. The fossil history and phylogenetic relationships of condors (Ciconiiformes: Vulturidae) in the New World. *Journal of Vertebrate Paleontology* 8(2):212-228.
- Emslie, S. D. and N. J. Czaplewski. 1985. A new record of giant short-faced bear, *Arctodus simus*, from western North America with a re-evaluation of its paleobiology. *Natural History Museum of Los Angeles County Contributions in Science* 371:1-12.
- Engles, W. L. 1935. Status of *Toxostoma redivivum* in the Rancho La Brea fauna. *Condor* 37:258.
- Engstrand, I. H. W. 1989. California' Ranchos: an enduring legacy. *Terra Magazine* 28(2):6-15.
- Esterly, C. O. 1913. The "Oil Fly" of Southern California. *Bulletin of the Southern California Academy of*

Science 12(1):9-11.

Fay, L. P. 1991. First Record of Tortoise (Reptilia: Testudinidae) from Rancho La Brea. Abstract, Annual Meeting of the Southern California Academy of Sciences 1991(8).

Fergusson, G. J. and W. F. Libby. 1963. UCLA radiocarbon dates II. Radiocarbon 5:1-22.

Fischer, B. A. 1991. New techniques for recovery of vertebrate fossils from asphaltic deposits, with reference to a new fossil deposit from Rancho La Brea. Abstract, Proceedings of the 5th Annual Mojave Desert Quaternary Research Symposium, San Bernardino County Museum Association Quarterly 38(2):48. (See Nagy, E. A. and Murray, 1991)

Fisher, H. I. 1944. The skulls of the cathartid vultures. Condor 46:272-296.

Fisher, H. I. 1945. Locomotion in the fossil vulture Teratornis. American Midland Naturalist 33(3):725-742.

Fisher, H. I. 1947. The skeletons of Recent and fossil Gymnogyps. Pacific Science 1(4):227-236.

Frost, F. H. 1927. The Pleistocene flora of Rancho La Brea. University of California Publications in Botany 14(3):73-98.

~Frost, R. 1925. The pits of Rancho La Brea. Mentor 13(7):19-21.

Furlong, E. L. 1946. Generic identification of the Pleistocene antelope from Rancho La Brea. Carnegie Institution of Washington Publication 551:137-140. (TYPE, Page: Breameryx minor gen. nov.)

Gagne, R. J. and S. E. Miller. 1982. Protochrysomyia howardi from Rancho La Brea, California, Pleistocene, new junior synonym of Cochliomyia macellaria (Diptera: Calliphoridae). Bulletin of the Southern California Academy of Sciences 80(2):95-96.

Gasteiger, L. D. 1972. Skulldigging in La Brea. Cosmos 6(8):20-22.

Gilbert, J. Z. 1909. Finds in the "fossil gardens" of Los Angeles. Los Angeles Museum Graphic, October 30th, 4 p.

Gilbert, J. Z. 1910. The fossils of Rancho La Brea. Bulletin of the Southern California Academy of Sciences 9(1):11-51.

Gilbert, J. Z. 1927. The bone drift in the tar beds of Rancho La Brea. Bulletin of the Southern California Academy of Sciences 26(3):59-66.

Giles, E. 1960. Multivariate analysis of Pleistocene and Recent coyotes (Canis latrans) from California. University of California Publications in Geological Sciences 36(8):369-390.

Goldin, J. 1979. Bison antiquus at Rancho La Brea. Abstract, Annual Meeting of the Southern California Academy of Sciences 90:45.

Goldman, E. A. 1944. Classification of wolves. Part II. In The wolves of North America by S. P. Young and E. A. Goldman, Washington D. C.: American Wildlife Institute, pp. 389-636.

Goldman, E. A. 1946. Classification of the races of the puma. Part II. In The puma: mysterious American cat by S. P. Young and E. A. Goldman, Washington D. C.: American Wildlife Institute, 358 p.

Gonyea, W. J. 1976. Behavioral implications of saber-toothed felid morphology. Paleobiology 2(4):332-342.

- Grayson, D. K. 1977. Pleistocene avifaunas and the overkill hypothesis. *Science* 195:691-693.
- Grinnell, Jr., F. 1908. Quaternary myriopods and insects of California. University of California Publications, Bulletin of the Department of Geological Sciences 5(12):207-215. (TYPE, Berkeley: *Julus occidentalis* sp. nov.; *J. cavicola* sp. nov.; *Spirobolus australis* sp. nov.; *Eleodes behrii* sp. nov.; *E. intermedia* sp. nov.; *E. elongata* sp. nov.)
- Gust, S. 1992. Invited research note. *Pony Express* 1(2):6. (Sexual differences in Rancho La Brea horses)
- Gust, S. 1992. Taphonomy and chronology at Rancho La Brea. Abstract, *Journal of Vertebrate Paleontology* (Supplement to #3) 12(70):32A.
- Gust, S. 1993. *Bison latifrons* and *Bison antiquus* at Rancho La Brea. Abstract, *Journal of Vertebrate Paleontology* (Supplement to #3) 13:39A.
- Gust, S. and H. Howard. 1991. Change in bird species through time at Rancho La Brea: ecological or taphonomic causes? Abstract, Annual Meeting of the Southern California Academy of Sciences 1991(9).
- Gust, S. and E. Scott. 1989. Morphological indicators of paleoenvironment: the Rancho La Brea horse through time. Abstract, *Journal of Vertebrate Paleontology* (Supplement to #3) 9(24A).
- Guthrie, D. 1973. Hot spots for North American Pleistocene fossil mammals and how they got that way. *Plaster Jacket* 20:1-12.
- Gutman, T. E. 1979. The use of asphaltum sourcing in archaeology. University of California Los Angeles, *Journal of New World Archaeology* 3(2):32-43.
- Hall, E. R. 1936. Mustelid mammals from the Pleistocene of North America with systematic notes of some recent members of the genera *Mustela*, *Taxidea*, and *Mephitis*. Carnegie Institution of Washington Publication 473:41-119.
- Hancock, G. A. 1964. A pictorial account of one man's score in fourscore years. San Jose, California: Paramount Printing Company, 281 p.
- Hanna, G. D. 1924. *Succinea avara* Say, from the Tar Pits of California. *Nautilus* 37(3):106.
- Hanna, G. D. 1949. Animals and oil traps. *Wasmann Collector* 7(4):138.
- Harris, J. M. 1989. Trapped in Time. Restoration of Charles R. Knight Mural. *Terra Magazine* 28(2):36-37.
- Harris, J. M. 1992. Reconstructing a late Pleistocene environment. *Terra Magazine* 31(1):12-21.
- Harris, J. M. 1996. Knight Mural of Rancho La Brea. *Terra Magazine* 33(2):8-9.
- Harris, J. M. and S. M. Cox. 1993. Rancho La Brea mammoths. *Current Research in the Pleistocene* 10:96-98.
- Harris, J. M. and G. T. Jefferson. 1985. Rancho La Brea: treasures of the tar pits. Natural History Museum of Los Angeles County, Science Series 31:1-87.
- Hay, O. P. 1927. The Pleistocene of the western region of North America and its vertebrated animals. Carnegie Institution of Washington Publication 322B:1-346.
- Haynes, G. and D. Stanford. 1984. On the possible utilization of *Camelops* by early man in North

America. *Quaternary Research* 22:216-230.

Heald, F. P. 1986. Paleopathology at Rancho La Brea. *Anthroquest* 36:6-7.

Heald, F. P. 1989. Injuries and diseases in *Smilodon californicus* Bovard, 1904, (Mammalia, Felidae) from Rancho La Brea, California. Abstract, *Journal of Vertebrate Paleontology* (Supplement to #3) 9(24A).

Heald, F. P. and C. A. Shaw. 1991. Sabertooth Cats. In: *Great Cats. Majestic creatures of the wild.* pp. 26-27, Emmaus, Pennsylvania: Rodale Press, Incorporated, 240 p.

Hebert, G. J. 1989. Rancho La Brea Today. *The Chesopiean, Chesopiean Library of Archaeology* 27(1):21-26.

Heizer, R. F. 1943. Aboriginal use of bitumen by the California indians. *Bulletin of the California Division of Mines* 118:74.

Heizer, R. F. 1953. Sites attributed to early man in California. *University of California Los Angeles, Archaeological Survey* 21:1-4.

Heizer, R. F. and A. E. Treganza. 1944. Mines and quarries of the indians of California. *California Division of Mines* 40(3):333.

Hemmer, H. 1978. Considerations on sociality in fossil carnivores. *Carnivore* 1(1):105-107.

Heric, T. M. 1969. Rancho La Brea: its history and its fossils. *Journal of the West* 8(2):209-230.

Hertel, F. 1994. Ecomorphological feeding diversity within the vulture guild through time. Abstract, *Journal of Vertebrate Paleontology* 14(Supplement to #3):29A.

Hibbard, C. W. 1958. Summary of North America Pleistocene mammalian local faunas. *Michigan Academy of Science, Arts and Letters* 43:1-32.

Hill, D. 1991. Was dire wolf a bone crusher? A morphological comparison of *Canis dirus* and *Crocuta crocuta*. Abstract, *Annual Meeting of the Southern California Academy of Sciences* 1991(13).

Hisham, M. W. M. and D. Grosjean. 1991. Air pollution in southern California museums: Indoor and outdoor levels of nitrogen dioxide, peroxyacetyl nitrate, nitric acid, and chlorinated hydrocarbons. *Environmental Science and Technology* 25:857-862.

Ho, T. Y. 1965. The amino acid composition of bone and tooth proteins in late Pleistocene mammals. *Proceedings of the National Academy of Sciences* 54(1):26-31.

Ho, T. Y. 1966. The isolation and amino acid composition of the bone collagen in Pleistocene mammals. *Comparative Biochemistry and Physiology* 18:353-358.

Ho, T. Y. 1967. The amino acids of bone and dentine collagens in Pleistocene mammals. *Biochimica Biophysica Acta* 133:568-573.

Ho, T. Y. 1967. Relationship between amino acid contents of mammalian bone collagen and body temperature as a basis for estimation of body temperature of prehistoric mammals. *Comparative Biochemistry and Physiology* 22:113-119.

Ho, T. Y., L. F. Marcus and R. Berger. 1969. Radiocarbon dating of petroleum-impregnated bone from tar pits at Rancho La Brea, California. *Science* 164:1051-1052.

- Hoffstetter, R. 1950. Algunas observaciones sobre los caballos fosiles de la America del Sur. *Amerhippus* gen. nov. *Boletin Informaciones Cientificas Nacionales* 3:426-454.
- Holliday, K. 1972. By tar preserved. *West Magazine*, July, pp. 11-14.
- Hoots, H. W. 1931. Geology of the eastern part of the Santa Monica Mountains, Los Angeles County, California. United States Geological Survey, Professional Paper 165-C:1-134.
- Howard, H. 1923. The fossil beds of La Brea. International Association of High School Natural History Clubs, November 2:1.
- Howard, H. 1927. A review of the fossil bird, *Parapavo californicus* (Miller), from the Pleistocene asphalt beds of Rancho La Brea. With an appendix; statistical identification as applied to *Parapavo*, by F. H. Frost. University of California Publications, Bulletin of the Department of Geological Sciences 17(1):1-62.
- Howard, H. 1928. The beak of *Parapavo californicus* (Miller). *Bulletin of the Southern California Academy of Sciences*, 27(3):90-91.
- Howard, H. 1929. Additional bird records from the Pleistocene of Rancho La Brea. *Condor*, 31:251-252.
- Howard, H. 1930. A census of the Pleistocene birds of Rancho La Brea from the collection of the Los Angeles museum. *Condor* 32:81-88.
- Howard, H. 1932. Eagles and eagle-like vultures of the Pleistocene of Rancho La Brea. Carnegie Institution of Washington Publication 429:1-82.
- Howard, H. 1933. A new species of owl from the Pleistocene of Rancho La Brea, California. *Condor* 35:66-69. (TYPE, Page: *Strix brea* sp. nov.)
- Howard, H. 1935. The Rancho La Brea wood ibis. *Condor* 37(5):251-253. (TYPE, Page: *Mycteria wetmorei* sp. nov.)
- Howard, H. 1936. Further studies upon the birds of the Pleistocene of Rancho La Brea. *Condor* 38(1):32-36.
- Howard, H. 1937. A Pleistocene record of the passenger pigeon in California. *Condor* 39(1):12-14.
- Howard, H. 1938. The Rancho La Brea caracara: a new species. Carnegie Institution of Washington Publication 487(5):217-240. (TYPE, Page: *Polyborus prelutosus* sp. nov.)
- Howard, H. 1940. A New Race of Caracara from the Pleistocene of Mexico. *Condor* 42:41-44. (TYPE, Page: *Polyborus prelutosus prelutosus* ssp. nov.)
- Howard, H. 1942. A review of the American fossil storks. Carnegie Institution of Washington Publication 530(7):187-203.
- Howard, H. 1945. Observations on young tarsometatarsi of the fossil turkey *Parapavo californicus* (Miller). *Auk* 62:596-603.
- Howard, H. 1945. Fossil birds. Los Angeles County Museum, Science Series 10, Paleontology 6:1-40.
- Howard, H. 1946. A review of the Pleistocene birds of Fossil Lake, Oregon. Carnegie Institution of Washington Publications 551:141-195.
- Howard, H. 1947. An ancestral golden eagle raises a question in taxonomy. *Auk* 64:287-291.

- Howard, H. 1949. The California turkey. Los Angeles County Museum Quarterly 7(4):15-16.
- Howard, H. 1950. Teratornis: The wonder bird of the ice age. Los Angeles County Museum Leaflet Series, Science 3:1-4.
- Howard, H. 1952. The Prehistoric Avifauna of Smith Creek Cave, Nevada, with a Description of a New Gigantic Raptor. Bulletin of the Southern California Academy of Sciences 51(2):50-54.
- Howard, H. 1953. Forty years at Rancho La Brea. Los Angeles County Museum Quarterly 10(2):6-12.
- Howard, H. 1955. Fossil birds. Los Angeles County Museum, Science Series 17, Paleontology 10:1-40.
- Howard, H. 1960. Significance of carbon-14 dates for Rancho La Brea. Science 131:712-714.
- Howard, H. 1961. Fossil Birds. Los Angeles County Museum, Science Series 17, Paleontology 10:1-44.
- Howard, H. 1962. A comparison of prehistoric avian assemblages from individual pits at Rancho La Brea, California. Los Angeles County Museum of Natural History Contributions in Science 58:1-24.
- Howard, H. 1962. Fossil birds with especial reference to the birds of Rancho La Brea. Los Angeles County Museum of Natural History, Science Series Number 17, Paleontology 10:1-44.
- Howard, H. 1964. Fossil Anseriformes. In The waterfowl of the world, J. Delacour, editor, London: Country Life Limited 4:233-326.
- Howard, H. 1964. A fossil owl from Santa Rosa Island, California, with comments on the eared owls of Rancho La Brea. Bulletin of the Southern California Academy of Sciences 63(1):27-31.
- Howard, H. 1968. Limb measurements of the extinct vulture, *Coragyps occidentalis*. Papers of the Archaeological Society of New Mexico 1:115-128.
- Howard, H. 1972. The Incredible Teratorn Again. Condor 74(3):341-344.
- Howard, H. 1972. Type Specimens in the Collections of the Natural History Museum of Los Angeles County. Los Angeles County Museum of Natural History Contributions in Science 228:1-27.
- Howard, H. 1974. Postcranial elements of the extinct Condor *Breagyps clarki* (Miller). Los Angeles County Museum of Natural History Contributions in Science 256:1-24.
- Howard, H. and A. H. Miller. 1939. The avifauna associated with the human remains at Rancho La Brea, California. Carnegie Institution of Washington Publication 514:39-48.
- Hrdlicka, A. 1918. Recent discoveries attributed to early man in America. Smithsonian Institution Bureau of American Ethnology Bulletin 66:9-67.
- Hubbs, C. L., G. S. Bien and H. E. Seuss. 1960. La Jolla natural radiocarbon measurements, I. Radiocarbon 2:197-223.
- Hubbs, C. L. and B. W. Walker. 1947. Abundance of desert animals indicated by capture in fresh road tar. Ecology 28(4):464-466.
- Husband, R. A. 1924. Variability in *Bubo virginianus* from Rancho La Brea. Condor 26:220-225.
- Jackson, H. H. T. 1951. Classification of the races of coyote. Part II. In The clever coyote by S. P. Young and H. H. T. Young, Washington D. C.: American Wildlife Institute, pp. 227-441.

Jaffe, E. B. and A. M. Sherwood. 1951. Physical and chemical comparison of modern and fossil tooth and bone material. United States Geological Survey Report TEM-149:1-19.

Janczewski, D. N., N. Yuhki, D. A. Gilbert, G. T. Jefferson and S. J. O'Brien. 1992. Molecular phylogenetic inference from saber-toothed cat fossils of Rancho La Brea. Proceedings of the National Academy of Science 89:9769-9773.

Jefferson, G. T. 1983. First record of jaguar from the late Pleistocene of California. Bulletin of the Southern California Academy of Sciences 82(2):95-98.

Jefferson, G. T. 1986. A new specimen of tapir from Rancho La Brea. Current Research in the Pleistocene 3:68-69.

Jefferson, G. T. 1986. Late Pleistocene large mammalian herbivores: implications for big game hunters in southern California. Abstract, Annual Meeting of the Southern California Academy of Sciences 5.

Jefferson, G. T. 1987. Fossil tapirs from the late Cenozoic of western North America. Abstract, Annual Meeting of the Southern California Academy of Sciences 13.

Jefferson, G. T. 1988. Late Pleistocene large mammalian herbivores: implications for big game hunters in southern California. In Desert Ecology 1986: A Research Symposium, Southern California Academy of Sciences and the Southern California Desert Studies Consortium, 15-35.

Jefferson, G. T. 1989. Late Cenozoic tapirs (Mammalia: Perissodactyla) of western North America. Natural History Museum of Los Angeles County Contributions in Science 406:1-22.

Jefferson, G. T. 1989. Taphonomic measurements with a sonic digitizer at Rancho La Brea. Abstract, Journal of Vertebrate Paleontology (Supplement to #3) 9(27A).

Jefferson, G. T. 1989. Digitized sonic location and computer imaging of Rancho La Brea specimens from the Page Museum Salvage. Current Research in the Pleistocene 6:45-47.

Jefferson, G. T. 1991. Size and sexual dimorphism in *Panthera leo atrox* (Mammalia; Felidae) from Rancho La Brea. Abstract, Annual Meeting Southern California Academy of Sciences 1991(16).

Jefferson, G. T. 1992. A new view of an ancient landscape. Terra Magazine 31(1):22-23.

Jefferson, G. T. 1992. People and the brea. A brief history of a natural resource. Terra Magazine 31(1):3-9.

Jefferson, G. T. 1995. An additional avian specimen referable to *Teratornis incredibilis* from the early Irvingtonian, Vallecito-Fish Creek Basin, Anza-Borrego Desert State Park, California. In: Paleontology and Geology of the Western Salton Trough Detachment, Anza-Borrego Desert State Park, California, P. Remeika and A. Sturz, editors, Field Trip Guildbook and Volume for the 1995 San Diego Association of Geologist's Field Trip to Anza-Borrego Desert State Park, 1:94-96.

Jefferson, G. T. and S. M. Cox. 1986. New articulated vertebrate remains from Rancho La Brea. Current Research in the Pleistocene 3:70:71.

Jefferson, G. T. and J. Goldin. 1989. Seasonal migration of *Bison antiquus* from Rancho La Brea. Quaternary Research 31:107-112.

Jefferson, G. T. and A. E. Tejada-Flores. 1993. The late Pleistocene record of *Homotherium* (Felidae: Machairodontinae) in the southwestern United States. PaleoBios 15(3):37-46.

Jerison, H. J. 1973. Evolution of the brain and intelligence. New York: Academic Press, pp. 356-362.

- Johnson, D. L. 1977. The California ice-age refugium and the Rancholabrean extinction problem. *Quaternary Research* 8:149-153.
- Johnson, D. L. 1977. The late Quaternary climate of coastal California: evidence for an Ice Age refugium. *Quaternary Research* 8:154-179.
- Jordan, D. S. and H. Hannibal. 1923. Fossil sharks and rays of the Pacific slope of North America. *Bulletin of the Southern California Academy of Sciences* 22(2):27-63.
- Keller, J. S. and D. F. McCarthy. 1989. Data recovery at the Cole Canyon site (CA-RIV-1139), Riverside County, California. *Pacific Coast Archaeological Society Quarterly* 25(1):1-90.
- Kellogg, L. 1912. Pleistocene rodents of California. University of California Publications, Bulletin of the Department of Geology 7(8):151-168.
- Kelly, W. A. 1940. Tar as a trap for unwary humans. *American Journal of Science* 238:451-452.
- Kennedy, G. E. 1989. A note on the ontogenetic age of the Rancho La Brea hominid, Los Angeles, California. *Bulletin of the Southern California Academy of Sciences* 88(3):123-126.
- King, G. 1953. The mystery of the La Brea tar pits. *Sir Magazine* 10(7):1-4.
- Klide, A. M. 1989. Overriding vertebral spinous processes in the extinct horse, *Equus occidentalis*. *American Journal Veterinary Research* 50(4):592-593.
- Knowlton, F. H. 1916. Notes on two conifers from the Pleistocene Rancho La Brea asphalt deposits near Los Angeles, California. *Journal of the Washington Academy of Science* 6:85-86.
- Kröeber, A. L. 1962. The Rancho La Brea skull. (Edited by R. F. Heizer), *American Antiquity* 27(3):416-417.
- Kurtén, B. 1960. A skull of the Grizzly Bear (*Ursus arctos* L.) from Pit 10, Rancho La Brea. *Los Angeles County Museum of Natural History Contributions in Science* 39:1-7.
- Kurtén, B. 1984. Geographic Differentiation in the Rancholabrean Dire Wolf (*Canis dirus* Leidy) in North America. IN: *Contributions in Quaternary Vertebrate Paleontology: A Volume in Memorial to John E. Guilday, H. H. Genoways and M. R. Dawson, editors, Carnegie Museum of Natural History, Special Publication* 8:218-227. (TYPE, Berkeley: *Canis dirus guildayi* ssp. nov.)
- Kurtén, B. and E. Anderson. 1980. *Pleistocene mammals of North America*. New York: Columbia University Press, 443 p.
- Kvenvolden, K. A. and E. Peterson. 1972. Amino acids in late Pleistocene bone from Rancho La Brea, California. *Abstract, Geological Society of America* 5(7):704-705.
- Lackie, M. O. 1949. Ancient secrets of Rancho La Brea. *Union Oil California On Tour* 11(3):12-17.
- LaDuke, T. C. 1983. The fossil snake fauna of Pit 91, Rancho La Brea, Los Angeles County, California. *Masters of Science Thesis, Department of Zoology, Michigan State University*, 57 p.
- LaDuke, T. C. 1991. First record of salamander remains from Rancho La Brea. *Abstract, Annual Meeting of the Southern California Academy of Sciences* 1991(7).
- LaDuke, T. C. 1991. The fossil snakes of Pit 91, Rancho La Brea, California. *Los Angeles County Museum of Natural History Contributions in Science* 424:1-28.

Lamb, R. V. 1988. Nonmarine mollusks of Pit 91, Rancho La Brea, and their paleoecologic implications. Abstract, Annual Meeting of the Southern California Academy of Sciences 119.

Lamb, R. V. 1989. The nonmarine mollusks of Pit 91, Rancho La Brea, southern California, and their Paleocologic and biogeographic implications. Masters Thesis, California State University, Northridge, 365 p.

Lamb, R. V. 1991. The molluscan paleontology and paleoecology of Pit 91, Rancho La Brea, southern California. Abstract, Annual Meeting of the Southern California Academy of Sciences 1991(5).

Lamb, R. V. and G. T. Jefferson. 1988. Mollusks associated with articulated vertebrate remains from Rancho La Brea. *Current Research in the Pleistocene* 5:59-60.

Lamb, R. V. and N. J. Maloney. 1991. The depositional environments, history, and correlation of the sediments of Pit 91, Rancho La Brea, southern California. Abstract, Annual Meeting of the Southern California Academy of Sciences 1991(2).

Larew, H. 1987. Two cynipid wasp acorn galls preserved in the La Brea tar pits (Early Holocene). *Proceedings of the Entomological Society of Washington* 89(4):831-833.

Larson, L. M. 1930. Osteology of the California roadrunner Recent and Pleistocene. University of California Publication in Zoology 32(4):409-428.

Link, H. A. 1992. Mount Fuji and the La Brea tar pits. *Terra Magazine* 31(1):44-47.

Lytle, J. W. 1926. The Rancho La Brea asphalt pits. *Los Angeles Museum Graphic* 1(1):22-24.

Macdonald, J. R. 1969. Death trap of the ages. *National Wildlife Magazine* 7(6):24-29.

Macdonald, J. R. and L. J. Macdonald. 1974. Sabretooth cats and imperial mammoths: a guidebook to fossil hunting in southern California. The Ward Richie Press, 112 p.

Macdonald, J. R. and L. J. Macdonald. 1974. A field guide to the fossils of western North America. New York: Harper and Row, ??? p.

Macdonald, J. R. and G. Sibley. 1969. Paleopathological ponderings or how to tell a sick saber-tooth. *Los Angeles County Museum Quarterly* 8(2):26-30.

MacPherson, A. H. 1965. The origin of diversity in mammals of the Canadian Arctic tundra. *Systematic Zoology* 14:153-173.

Maloney, N. J. 1970. Late Pleistocene sedimentation and asphalt entrapment, Rancho La Brea. Abstract, Annual Meeting of the Southern California Academy of Sciences, May 5-6, p. 28.

Maloney, N. J. 1979. Late Pleistocene sedimentation and asphalt emplacement, Rancho La Brea. Abstract, Annual Meeting of the Southern California Academy of Sciences 55:28.

Maloney, N. J. and W. A. Akersten. 1973. Field trip to La Brea tar pits and L. A. County Museum of Natural History, field trip #4. Association of Engineering Geologists, 1973 Annual Meeting Field Trips Guidebook, 7 p.

Maloney, N. J. and W. A. Akersten. 1976. Formation of calcareous sandstone at asphalt-groundwater contacts in fluvial sediments, Rancho La Brea, California. Abstract of Programs, 72th Annual Meeting of the Cordilleran Section, Geological Society of America 8(3):393.

- Maloney, N. J. and J. Daigh. 1971. Sediment facies in Pit 91, Rancho La Brea tar pits, California. Abstract, Geological Society of America, Cordilleran Section 3(2):156-157.
- Maloney, N. J., J. J. Criscione and L. L. Bramlett. 1973. Fluvial sedimentation at Rancho La Brea. Abstract, Geological Society of America, Cordilleran Section 5(1):77.
- Maloney, N. J., J. K. Warter and W. A. Akersten. 1974. Probable origin of the fossil deposits in Pit 91, Rancho La Brea tar pits, California. Abstract of Programs, 70th Annual Meeting of the Cordilleran Section, Geological Society of America 6(3):212.
- Marcus, L. F. 1960. A census of the abundant large Pleistocene mammals from Rancho La Brea. Los Angeles County Museum of Natural History Contributions in Science 38:1-11.
- Marcus, L. F. 1979. Radiocarbon dates for Rancho La Brea. Abstract, Annual Meeting of the Southern California Academy of Sciences 57:29.
- Marcus, L. F. 1991. Rancho La Brea research - a retrospective and prespective view. Abstract, Annual Meeting of the Southern California Academy of Sciences 1991(24).
- Marcus, L. F. 1992. Avenues of research. Terra Magazine 31(1):9-10.
- Marcus, L. F. and R. Berger. 1984. The significance of radiocarbon dates for Rancho La Brea. In Quaternary extinctions a prehistoric revolution, P. S. Martin and R. G. Klein (editors), Tucson: University of Arizona Press, pp. 159-183.
- Martin, R. A. 1974. Fossil mammals from the Colman IIA fauna, Sumter County. In Pleistocene mammals of Florida, S. E. Webb, editor, Gainesville: University of Florida Press, pp. 35-99.
- Martin, P. S. 1984. Prehistoric overkill: the global model. In Quaternary Extinctions, P. S. Martin and R. G. Klein, editors, Tucson: University of Arizona Press, pp. 354-403.
- Martin, T. 1990. Jungpleistozäne und Holozäne skelettfunde von *Bos primigenius* und *Bison priscus* aus Deutschland und ihre bedeutung für die zuordnung isolierter langknochen. Eiszeitalter und Gegenwart 40:1-19.
- Mason, H. L. 1927. Fossil records of some west American conifers. Carnegie Institution of Washington Publication 346(5):139-160.
- Matthew, W. D. 1913. The asphalt group of fossil skeletons. The tar pits of Rancho La Brea, California. American Museum Journal 13:291-297.
- Matthew, W. D. 1916. The grim wolf of the tar pits. The great extinct wolf from the asphalt deposits at Rancho La Brea near Los Angeles. Skeleton of *Canis dirus* recently mounted in the American Museum. American Museum Journal 16(1):45-47.
- Matthew, W. D. 1916. Scourge of the Santa Monica Mountains. American Museum Journal 16(7):468-472.
- Mawby, J. E. 1960. Cranial anatomy of the late Cenozoic Machairodonts. M. A. Thesis, U. C. Berkeley.
- McDonald, H. G. 1991. Sexual dimorphism in the skull of Harlan's ground sloth. Abstract, Annual Meeting of the Southern California Academy of Sciences 1991(10).
- McDonald, H. G. 1992. Chester's sloths. Terra Magazine 31(1):32-33.
- McDonald, J. N. 1979. New evidence of *Bison latifrons* in the Rancho La Brea Fauna (Los Angeles

- County, California). Abstract, Journal of the Colorado-Wyoming Academy of Science 11(196):88.
- McDonald, J. N. 1981. North American Bison, their classification and evolution. Berkeley: University of California Press, 316 pp.
- McMenamin, M. A. S., D. J. Blunt, K. A. Kvenvolden, S. E. Miller, L. F. Marcus and R. Pardi. 1982. Amino acid geochemistry of fossil bones from the Rancho La Brea asphalt deposit, California. Quaternary Research 18:174-183.
- McNassor, C. 1992. Chester Stock, 1892-1950. A memorable fossil hunter. Terra Magazine 31(1):28-34.
- McNassor, C. 1992. George Allan Hancock, 1875-1965. Terra Magazine 31(1):35.
- McNassor, C. 1992. George C. Page. Terra Magazine 31(1):36-37.
- Meier, D. K. and K. J. Reinhard. 1990. Preliminary observation of pathological conditions of dire wolves of the Page Museum. Abstract, Journal of Vertebrate Paleontology (Supplement to #3) 10(35A):132.
- Menard, Jr., H. W. 1947. Analysis of measurements in length of the metapodials of Smilodon. Bulletin of the Southern California Academy of Sciences 46(3):127-135.
- Merriam, J. C. 1906. Recent discoveries of Quaternary mammals in southern California. Science 24:248-250.
- Merriam, J. C. 1908. Fauna of the asphalt beds exposed near Los Angeles, California. Abstract, Bulletin of the Geological Society of America 18:659.
- Merriam, J. C. 1908. Death trap of the ages. Sunset Magazine 21(6):465-475.
- Merriam, J. C. 1909. The skull and dentition of an extinct cat closely allied to *Felis atrox* Leidy. University of California Publications, Bulletin of the Department of Geology 5(20):291-304. (TYPE, Berkeley: *Felis atrox bebbi* ssp. nov.)
- Merriam, J. C. 1909. A death-trap which antedates Adam and Eve: the discovery of a Californian tar-swamp that holds the bones of extinct monsters. Harper's Weekly (December) 53:11-12.
- Merriam, J. C. 1910. New mammalia from Rancho La Brea. University of California Publications, Bulletin of the Department of Geology 5(25):391-395. (TYPE, Berkeley: *Canis orcutti* sp. nov.; *Canis andersoni* sp. nov.; *Canis occidentalis furlongi* ssp. nov.; *Lynx californicus fisheri* sp. nov.)
- Merriam, J. C. 1911. The fauna of Rancho La Brea, Pt. 1, Occurrence. Memoirs of the University of California 1(2):197-213.
- Merriam, J. C. 1911. Note on a gigantic bear from the Pleistocene of Rancho La Brea. University of California Publications, Bulletin of the Department of Geology 6(6):163-166. (TYPE, Berkeley: *Arctotherium californicum* sp. nov.)
- Merriam, J. C. 1912. The fauna of Rancho La Brea, Pt. 2, Canidae. Memoirs of the University of California 1(2):217-272. (TYPE, Berkeley: *Canis milleri* sp. nov.; *Canis ochropus orcutti* ssp. nov.)
- Merriam, J. C. 1912. Recent discoveries of Carnivora in the Pleistocene of Rancho La Brea. University of California Publications, Bulletin of the Department of Geology 7(3):39-46.
- Merriam, J. C. 1913. The skull and dentition of a camel from the Pleistocene of Rancho La Brea. University of California Publications, Bulletin of the Department of Geology 7(14):305-323.

- Merriam, J. C. 1913. Preliminary report on the horses of Rancho La Brea. University of California Publications, Bulletin of the Department of Geology 7(21):397-418.
- Merriam, J. C. 1914. The brea maid. Bulletin of the Southern California Academy of Sciences 13(2):27-29.
- Merriam, J. C. 1914. Preliminary report on the discovery of human remains in an asphalt deposit at Rancho La Brea. Science 40:198-203.
- Merriam, J. C. 1915. Asphalt beds of Rancho La Brea. University of California Blue and Gold, May, p. 8.
- Merriam, J. C. 1915. Significant features in the history of life on the Pacific coast. Nature and science on the Pacific coast. San Francisco: Paul Elder and Company, pp. 88-103.
- Merriam, J. C. 1917. Felidae of Rancho La Brea. Abstract, Bulletin of the Geological Society of America, March, 28:211.
- Merriam, J. C. 1918. Note on the systematic position of the wolves of the *Canis dirus* group. University of California Publications, Bulletin of the Department of Geology 10(27):531-533. (TYPE, Berkeley: *Aenocyon dirus* gen. nov.)
- Merriam, J. C. 1918. New puma-like cat from Rancho La Brea. University of California Publications, Bulletin of the Department of Geology 10(28):535-537. (TYPE, Berkeley: *Felis daggetti* sp. nov.)
- Merriam, J. C. 1921. An outline of progress in palaeontological research on the Pacific coast. University of California Publication, Bulletin of the Department of Geology 12(3):237-266.
- Merriam, J. C. 1923. The cats of Rancho La Brea. Abstract, Journal of the Washington Academy of Science 13(11):238.
- Merriam, J. C. 1930. The living past. New York: Charles Scribner's Sons, 144 p.
- Merriam, J. C. 1930. Fossils from Rancho La Brea: "a classic of science." Science News Letter (Washington) 18(505):378-380.
- Merriam, J. C. 1931. The cats of Rancho La Brea; a climax in evolution. Abstract, Science 74:576.
- Merriam, J. C. and Associates. 1921. Continuation of paleontological researches. Carnegie Institution Year Book 20:447-451.
- Merriam, J. C. and Associates. 1922. Continuation of paleontological researches. Carnegie Institution Year Book 21:398-401.
- Merriam, J. C. and Associates. 1923. Continuation of palaeontological researches. Carnegie Institution Year Book 22:351-353.
- Merriam, J. C. and Associates. 1924. Continuation of paleontological researches. Carnegie Institution Year Book 23:293-296.
- Merriam, J. C. and Associates. 1925. Continuation of paleontological researches. Carnegie Institution Year Book 24:358-360.
- Merriam, J. C. and Associates. 1931. Continuation of paleontological researches. Carnegie Institution Year Book Number 30, 1930-1931, p. 448.
- Merriam, J. C. and C. Stock. 1921. Notes on peccary remains from Rancho La Brea. University of

California Publications, Bulletin of the Department of Geology 13(2):9-17.

Merriam, J. C. and C. Stock. 1925. Relationships and structure of the short-faced bear, *Arctotherium*, from the Pleistocene of California. Carnegie Institution of Washington Publication 347(1):1-35.

Merriam, J. C. and C. Stock. 1932. The Felidae of Rancho La Brea. Carnegie Institution of Washington Publication 422:1-232. (TYPE, Page: *Felis bituminosa* sp. nov.; *Smilodon californicus brevipes* ssp. nov.)

Merriam, J. C. and C. Stock. 1933. The cats of Rancho La Brea. Carnegie Institution of Washington, News Service Bull. 3(2):9-16.

Mestel, R. 1993. Saber-toothed tales. Discover Magazine 14(4):50-59.

Miles, N. A. ?????. A prehistoric animal trap. Los Angeles Museum Graphic ?

Miller, A. H. 1929. The passerine remains from Rancho La Brea in the paleontological collection of the University of California. University of California Publications, Bulletin of the Department of Geology 19(1):1-22.

Miller, A. H. 1929. Additions to the Rancho La Brea avifauna. Condor 31:223-224.

Miller, A. H. 1937. Biotic associations and life-zones in relation to the Pleistocene birds of California. Condor 39:248-252.

Miller, A. H. 1940. Climatic conditions of the Pleistocene reflected by the ecologic requirements of fossil birds. Proceedings of the 6th Pacific Science Congress 2:807-810.

Miller, A. H. 1947. A new genus of icterid from Rancho La Brea. Condor 49(1):22-24. (TYPE, Page: *Pandanaris convexa* gen. et sp. nov.)

Miller, G. J. 1968. On the age distribution of *Smilodon californicus* Bovard from Rancho La Brea. Los Angeles County Museum of Natural History Contributions in Science 131:1-17.

Miller, G. J. 1969. A new hypothesis to explain the method of food ingestion used by *Smilodon californicus* Bovard. Idaho State Museum Tebiwa 12(1):9-19.

Miller, G. J. 1969. A study of cuts, grooves, and other marks on Recent and fossil bone: I. Animal tooth marks. Idaho State Museum Tebiwa 12(1):20-26.

Miller, G. J. 1969. Man and *Smilodon*: a preliminary report on their possible coexistence at Rancho La Brea. Los Angeles County Museum of Natural History Contributions in Science 163:1-8.

Miller, G. J. 1970. Archaeological Projects: Rancho La Brea Project. Society of California Archaeology, Incorporated, Newsletter 4(2 & 3):11-12.

Miller, G. J. 1970. The Rancho La Brea Project: 1969-1970. Los Angeles County Museum of Natural History Quarterly 9(1):26-30.

Miller, G. J. 1971. Some new and improved methods for recovering and preparing fossils as developed on the Rancho La Brea Project. Curator 14(4):293-307.

Miller, G. J. 1972. Science and education at the Tar Pits (Part I). Ward's Bulletin 11(79):1-6.

Miller, G. J. 1972. Science and education at the Tar Pits (Part II). Ward's Bulletin 11(80):1-5.

Miller, G. J. 1975. A study of cuts, grooves, and other marks on recent and fossil bones: II. Weathering

- cracks, fractures, splinters, and other similar natural phenomena. In *Lithic Technology*, E. Swanson (editor), The Hague: Mouton Publ., pp. 211-226.
- Miller, G. J. 1979. Some new evidence in support of the stabbing hypothesis for *Smilodon*. Abstract, Annual Meeting of the Southern California Academy of Sciences 59:30.
- Miller, G. J. 1983. Some new evidence in support of the stabbing hypothesis for *Smilodon californicus* Bovard. *Carnivore* 3(2):8-26.
- Miller, G. J. 1984. On the Jaw Mechanism of *Smilodon californicus* Bovard and Some Other Carnivores. Imperial Valley College Museum Occasional Paper 7:1-107.
- Miller, Jr., G. S. 1912. The names of the large wolves of northern and western North America. *Smithsonian Miscellaneous Collections* 59(15):1-5.
- Miller, L. H. 1909. *Pavo californicus*, a fossil peacock from the Quaternary asphalt beds of Rancho La Brea. University of California Publications, Bulletin of the Department of Geology 5(19):285-289. (TYPE, Berkeley: *Pavo californicus* sp. nov.)
- Miller, L. H. 1909. *Teratornis*, a new avian genus from Rancho La Brea. University of California Publications, Bulletin of the Department of Geology 5(21):305-317. (TYPE, Berkeley: *Teratornis merriami* gen. et sp. nov.; *Catharista occidentalis* sp. nov.)
- Miller, L. H. 1910. Fossil birds from the Quaternary of southern California. *Condor* 12:12-15.
- Miller, L. H. 1910. Wading birds from the Quaternary asphalt beds of Rancho La Brea. University of California Publications, Bulletin of the Department of Geology 5(30):439-448. (TYPE, Berkeley: *Ciconia maltha* sp. nov.; *Grus minor* sp. nov.)
- Miller, L. H. 1910. The condor-like vultures of Rancho La Brea. University of California Publications, Bulletin of the Department of Geology 6(1):1-19. (TYPE, Page: *Sarcorhamphus clarki* sp. nov.; Berkeley: *Pleistogyps rex* gen. et sp. nov.; *Cathartornis gracilis* sp. nov.)
- Miller, L. H. 1911. A series of eagle tarsi from the Pleistocene of Rancho La Brea. University of California Publications, Bulletin of the Department of Geology 6(12):305-316. (TYPE, Berkeley: *Morphnus woodwardi* sp. nov.; *Geranoaetus grinnelli* sp. nov.; *G. fragilis* sp. nov.)
- Miller, L. H. 1911. A synopsis of our knowledge concerning the fossil birds of the Pacific coast of North America. *Condor* 13:117-118.
- Miller, L. H. 1912. Contributions to avian paleontology from the Pacific coast of North America. University of California Publications, Bulletin of the Department of Geology 7(5):61-115.
- Miller, L. H. 1915. A walking eagle from Rancho La Brea. *Condor* 17:179-181. (TYPE, Page: *Morphnus daggetti* sp. nov.)
- Miller, L. H. 1916. A review of the species *Pavo californicus*. University of California Publications, Bulletin of the Department of Geology 9(7):89-96. (TYPE, Berkeley: *Parapavo californicus* gen. nov.)
- Miller, L. H. 1916. The owl remains from Rancho La Brea. University of California Publications, Bulletin of the Department of Geology 9(8):97-104.
- Miller, L. H. 1916. Two vulturid raptors from the Pleistocene of Rancho La Brea. University of California Publications, Bulletin of the Department of Geology 9(9):105-109. (TYPE, Berkeley: *Neophrontops americanus* gen. et sp. nov.; *Neogyps errans* gen. et sp. nov.)

- Miller, L. H. 1919. The walking eagle of California. *Overland Monthly* (2)70:427-429.
- Miller, L. H. 1921. A synopsis of California's fossil birds. *Condor* 23:129-130.
- Miller, L. H. 1921. Asphalt beds of Rancho La Brea. *Journal of the Washington Academy of Science* 11:262-263.
- Miller, L. H. 1923. California's ancient bird life. *University of California Chronicle*, July, pp. 262-263.
- Miller, L. H. 1924. Anomalies in the distribution of fossil gulls. *Condor* 26:173-174.
- Miller, L. H. 1925. The birds of Rancho La Brea. *Carnegie Institution of Washington Publication* 349:63-106. (TYPE, Page and Berkeley: *Teratornis merriami* -- "hypotypes")
- Miller, L. H. 1927. The Falcons of the McKittrick Pleistocene. *Condor* 29:150-152.
- Miller, L. H. 1930. Dragon fly psychology. *Journal of Entomology and Zoology Pomona College* 22:45-46.
- Miller, L. H. 1931. Pleistocene Birds from the Carpinteria Asphalt of California. *University of California Publications, Bulletin of the Department of Geological Sciences* 20(10):361-374.
- Miller, L. H. 1932. The Pleistocene storks of California. *Condor*. 34(5):212-216.
- Miller, L. H. 1935. A Second Avifauna from the McKittrick Pleistocene. *Condor* 37:72-79.
- Miller, L. H. 1940. A New Pleistocene Turkey from Mexico. *Condor* 40:154-156.
- Miller, L. H. 1950. *Lifelong boyhood: recollections of a naturalist afield*. Berkeley: University of California Press, 226 p.
- Miller, L. H. and I. DeMay. 1942. The fossil birds of California: an avifauna and bibliography with annotations. *University of California Publication in Zoology* 47(4):47-142.
- Miller, L. H. and H. Howard. 1938. The status of the extinct condor-like birds of the Rancho La Brea Pleistocene. *Publications of the University of California Los Angeles, Biological Sciences* 1(9):169-176. (TYPE, Page: *Breagyps* gen. nov.)
- Miller, S. E. 1979. Pleistocene insects of Rancho La Brea and other California asphalt deposits. Abstract, Annual Meeting of the Southern California Academy Sciences 92:46.
- Miller, S. E. 1982. Quaternary insects of the California asphalt deposits. *Proceedings of the 3rd North American Paleontological Convention* 2:377-379.
- Miller, S. E. 1983. Late Quaternary insects of Rancho La Brea and McKittrick, California. *Quaternary Research* 20:90-104.
- Miller, S. E., R. D. Gordon and H. F. Howden. 1981. Reevaluation of Pleistocene scarab beetles from Rancho La Brea, California (Coleoptera: Scarabaeidae). *Proceedings of the Entomological Society of Washington* 83(4):625-630.
- Miller, S. E. and S. B. Peck. 1979. Fossil carrion beetles of Pleistocene California asphalt deposits, with a synopsis of Holocene California Silphidae (Insecta: Coleoptera: Silphidae). *Transactions of the San Diego Society of Natural History* 19(8):85-106.
- Miller, W. E. 1968. Occurrence of a giant bison, *Bison latifrons*, and a slender-limbed camel,

- Tanupolama, at Rancho La Brea. Los Angeles County Museum of Natural History Contributions in Science 147:1-9.
- Miller, W. E. and J. D. Brotherson. 1979. Size variation in foot elements of Bison from Rancho La Brea. Los Angeles County Museum of Natural History Contributions in Science 323:1-19.
- Moodie, R. L. 1918. Paleontological evidences of the antiquity of disease. Scientific Monthly, September, pp. 265-281.
- Moodie, R. L. 1918. Studies in paleopathology. Pathological evidences of disease among ancient races of man and extinct animals. Surgery, Gynecology and Obstetrics, November, pp. 498-510.
- Moodie, R. L. 1922. On the endocranial anatomy of some Oligocene and Pleistocene mammals. Journal of Comparative Neurology 34:343-379.
- Moodie, R. L. 1923. Paleopathology. An introduction to the study of ancient evidences of disease. Urbana: Univ. Illinois Press, 567 pp.
- Moodie, R. L. 1923. The Antiquity of Disease. Chicago: Univ. Chicago Press, 148 pp.
- Moodie, R. L. 1926. La paléopathologie des mammifères du Pléistocène. Biologie Médicale 16:431-440.
- Moodie, R. L. 1927. Studies in paleopathology XX. Vertebral lesions in the sabre-tooth, Pleistocene of California, resembling the so-called myositis ossificans progressiva, compared with certain ossifications in the dinosaurs. Annals of Medical History 9(1):91-102.
- Moodie, R. L. 1928. Studies in paleodontology IV. The evidences of pyorrhea, dead teeth, and gingival infections in the mandibles of the Pleistocene giant wolf (*Aenocyon dirus*) from Rancho La Brea. Pacific Dental Gazette 36:414-419.
- Moodie, R. L. 1929. Excess callus in Pleistocene bird. American Journal of Science, Series 5, 17:81-84.
- Moodie, R. L. 1929. Studies in Paleodontology, XVI. The California sabre-tooth; the mandibular teeth and associated structures. Pacific Dental Gazette 37(6):317-321.
- Moodie, R. L. 1929. An alveolar abscess in a fossil mammal. Pacific Dental Gazette 37:428-433.
- Moodie, R. L. 1929. Studies in Paleodontology, XX. The teeth and jaws of *Nothrotherium*. Pacific Dental Gazette 37(11):667-680.
- Moodie, R. L. 1929. Studies in Paleodontology, XXV. The California sabre-tooth; facial asymmetry following loss of sabre. Pacific Dental Gazette 37(12):764-766.
- Moodie, R. L. 1929. Studies in Paleodontology, XVII. The California sabre-tooth; two impactions and an abscess. Pacific Dental Gazette 37(12):767-770.
- Moodie, R. L. 1930. Studies in Paleodontology, XXII. Apical closure of root canals in adult Pleistocene Carnivora. Pacific Dental Gazette 38(1):1-4.
- Moodie, R. L. 1930. Studies in Paleopathology, XXV. Hypertrophy in the sacrum of the sabre-tooth, Pleistocene of southern California. American Journal of Surgery 8(6):1313-1315.
- Moodie, R. L. 1930. Studies in Paleopathology, XXVI. Pleistocene luxations. American Journal of Surgery 9(2):348-362.
- Moodie, R. L. 1930. Studies in Paleopathology, XXVII. A suggestion of rickets in the Pleistocene.

American Journal of Surgery 10(1):162-163.

Moodie, R. L. 1930. Studies in Paleopathology, XXVIII. The phenomenon of sacralization in the Pleistocene sabre-tooth. American Journal of Surgery 10(3):587-589.

Moodie, R. L. 1930. The ancient life of Yuma County, Arizona. Scientific Monthly 31:401-407.

Moore, I. and S. E. Miller. 1978. Fossil rove beetles from Pleistocene California asphalt deposits (Coleoptera: Staphylinidae). Coleoptera Bulletin 32(1):37-39.

Nagano, C. D., S. E. Miller and A. V. Morgan. 1982. Fossil tiger beetles (Coleoptera: Cicindelidae): review and new Quaternary records. Psyche 89(3-4):339-346.

Naples, V. L. 1987. Reconstruction of cranial morphology and analysis of function in the Pleistocene ground sloth *Nothrotheriops shastense* (Mammalia, Megatheriidae). Natural History Museum of Los Angeles County Contribution in Science 389:1-21.

Naples, V. L. 1989. The feeding mechanism in the Pleistocene ground sloth, *Glossotherium*. Natural History Museum of Los Angeles County Contribution in Science 415:1-23.

Naples, V. L. 1990. Morphological changes in the facial region and a model of dental growth and wear pattern development in *Nothrotheriops shastensis*. Journal of Vertebrate Paleontology 10(3):372-389.

Nigra, J. O. and J. F. Lance. 1947. A statistical study of the metapodials of the dire wolf group from the Pleistocene of Rancho La Brea. Bulletin of the Southern California Academy of Sciences 46(1):26-34.

Nowak, R. M. 1979. North American Quaternary Canis. Monograph of the Museum of Natural History, University of Kansas 6:1-154.

Olsen, S. J. 1985. Origins of the domestic dog: the fossil record. Tucson: University of Arizona Press, 118 p.

Orcutt, M. L. 1954. The discovery in 1901 of the La Brea fossil beds. Historical Society of Southern California Quarterly 36(4):338-341.

Oren, D. C. 1993. Did ground sloths survive to Recent times in the Amazon region? *Goeldiana Zoologia* 19:1-11. (R)

Orr, P. C. 1969. *Felis trumani*, a new radiocarbon dated cat skull from Crypt Cave, Nevada. Santa Barbara Museum of Natural History, Bulletin of the Department of Geology 2:1-8.

Osborn, H. F. 1925. Mammals and birds of the California tar pools. Rancho La Brea and McKittrick. Natural History, pp. 527-543.

Oswalt, S. S. 1979. Artifacts of Rancho La Brea. Abstract, Annual Meeting of the Southern California Academy of Sciences 84:42.

Owen, P. R. 1991. The atlas of *Smilodon*. Abstract, Annual Meeting of the Southern California Academy of Sciences 1991(17).

Owen, P. R. 1993. A factor analytic approach to the functional assessment of the atlas-axis complex of Rancho La Brea carnivorans *Smilodon fatalis* and *Canis dirus*. Abstract, Journal of Vertebrate Paleontology (Supplement to #3) 13:51A.

Patterson, B., W. Segall, W. D. Turnbull and T. J. Gaudin. 1992. The ear region in Xenarthrans

(=Edentata: Mammalia). Part II. Pilosa (Sloths, Anteaters), Palaeonodons, and a miscellany. *Fieldiana: Geology*, n. s., 24:1-79.

Peck, S. B. and S. E. Miller. 1980. Fossil Coleoptera from late Pleistocene asphalt deposits of southern California. Abstract, 16th International Congress of Entomology, Kyoto, Japan, p. 14.

Peck, S. B. and S. E. Miller. 1993. A catalog of the Coleoptera of America north of Mexico. Family: Silphidae. United States Department of Agriculture, Agriculture Handbook Number 529-28:1-24.

Pierce, W. D. 1945. A case of Pleistocene myiasis from the La Brea pits. *Bulletin of the Southern California Academy of Sciences* 44(1):8-9.

Pierce, W. D. 1946. Fossil arthropods of California: 10. Exploring the minute world of the California asphalt deposits. *Bulletin of the Southern California Academy of Sciences* 46(3):113-118.

Pierce, W. D. 1946. Fossil arthropods of California: 11. Descriptions of the dung beetles (Scarabaeidae) of the tar pits. *Bulletin of the Southern California Academy of Sciences* 45(3):119-131. (TYPE, Page/LACM: *Palaeocopris labreae* gen. et sp. nov.; *Onthophagus everestae* sp. nov.; *Copris pristinus* sp. nov.; *Canthon simplex antiquus* ssp. nov.; *C. praticolus vetustus* ssp. nov.)

Pierce, W. D. 1946. Fossil arthropods of California: 12. Description of a sericine beetle from the tar pits. *Bulletin of the Southern California Academy of Sciences* 45(3):131-132. (TYPE, Page/LACM: *Serica kanakoffi* sp. nov.)

Pierce, W. D. 1947. A progress report on the Rancho La Brea asphaltum studies. *Bulletin of the Southern California Academy of Sciences* 46(3):136-143.

Pierce, W. D. 1948. Fossil arthropods of California: 16. The carabid genus *Elaphrus* in the asphalt deposits. *Bulletin of the Southern California Academy of Sciences* 47(2):53-55. (TYPE, Page/LACM: *Elaphrus ruscarius foveatus* ssp. nov.)

Pierce, W. D. 1949. Fossil arthropods of California: 17. The silphid burying beetles in the asphalt deposits. *Bulletin of the Southern California Academy of Sciences* 48(2):55-70. (TYPE, Page/LACM: *Nicrophorus mckittricki* sp. nov.; *N. obtusiscutellum* sp. nov.; *N. guttulus labreae* ssp. nov.; *N. g. punctostriatus* ssp. nov.; *N. investigator alpha* ssp. nov.)

Pierce, W. D. 1953. Significance of insect remains in asphalt deposits. *Bulletin of the American Association of Petroleum Geologists* 37(1):188-189.

Pierce, W. D. 1954. Fossil arthropods of California: 18. The Tenebrionidae-Tentyriinae of the asphalt deposits. *Bulletin of the Southern California Academy of Sciences* 53(1):35-45.

Pierce, W. D. 1954. Fossil arthropods of California: 19. The Tenebrionidae-Scaurinae of the asphalt deposits. *Bulletin of the Southern California Academy of Sciences* 53(2):93-98.

Pierce, W. D. 1954. Fossil arthropods of California: 20. The Tenebrionidae-Coniontinae of the asphalt deposits. *Bulletin of the Southern California Academy of Sciences* 53(3):142-156. (TYPE, Page/LACM: *Coniontis blissi* sp. nov.; *C. remnans* sp. nov.; *C. abdominalis caseyi* ssp. nov.; *C. a. labreae* ssp. nov.; *C. a. fragmans* ssp. nov.; *C. tristis alpha* ssp. nov.; *C. t. asphalti* ssp. nov.; *C. t. latigula* ssp. nov.; *C. pectoralis paraelliptica* ssp. nov.; *C. p. interrupta* ssp. nov.)

Pierce, W. D. 1957. Insects. *Geological Society of America Memoirs* 67:943-952.

Pierce, W. D. 1961. The growing importance of Paleoentomology. *Entomological Society of Washington* 63(3):211-217.

- Plummer, E. 1972. Distribution crew unearths important fossil specimens. Southern California Gas Company, Gas News 31(8):7.
- Quinn, J. P. 1991. Stratigraphic analysis of the late Pleistocene Rancho La Brea deposits. Abstract, Annual Meeting of the Southern California Academy of Sciences 1991(3).
- Quinn, J. P. 1992. Rancho La Brea: geologic setting, late Quaternary depositional patterns and mode of fossil accumulation. IN: The Regressive Pleistocene Shoreline Southern California, E. G. Heaph and W. L. Lewis, eds., South Coast Geological Society Annual Field Trip Guide Book 20:221-232.
- Quinn, J. P. 1992. The geologic setting of Rancho La Brea. Terra Magazine 31(1):38-41.
- Raftery, P. 1979. Nonmarine ostracodes from Rancho La Brea. Abstract, Annual Meeting of the Southern California Academy of Sciences 60:30.
- Randau, J. A. 1967. Making prehistory at the La Brea tar pits. Westways, August, p. 33-35.
- Reynolds, R. L. 1968. Study of the human remains and associated fauna in Pit 10 of the Rancho La Brea asphalt deposits, California. Abstract, Annual Meeting of the Southern California Academy of Sciences.
- Reynolds, R. L. 1976. New record of *Antilocapra americana* Ord, 1818, in the late Pleistocene fauna of the Los Angeles Basin. Journal of Mammalogy 57(1):176-178.
- Reynolds, R. L. 1979. Occurrence of domestic dogs at Rancho La Brea. Abstract, Annual Meeting of the Southern California Academy of Sciences 86:43.
- Reynolds, R. L. 1985. Domestic dog associated with human remains at Rancho La Brea. Bulletin of the Southern California Academy of Sciences 84(2):76-85.
- Richards, G. D. and M. L. McCrossin. 1990. A new species of *Antilocapra* from the late Quaternary of California. Geobios 24(5):623-635.
- Romig, M. L. 1984. The resurrection of Pit 91. Terra Magazine 23(1):14-16.
- Ruddell, M. W. 1989. Cranial variation in the dire wolf (*Canis dirus*) with a temporal framework at Rancho La Brea, Los Angeles, California. Abstract, Journal of Vertebrate Paleontology (Supplement to #3) 9(3):37A.
- Ruddell, M. W. 1991. Use of zygomatic arch width as an indicator of change through time in *Canis dirus* from Rancho La Brea, Los Angeles, California. Abstract, Annual Meeting of the Southern California Academy of Sciences 1991(14).
- Salls, R. A. 1979. Chapapote. Desert Magazine 42(6):24-27.
- Salls, R. A. 1980. The La Brea cogged stone. Masterkey, Southwest Museum 54(2):53-59.
- Salls, R. A. 1986. The La Brea atlatl foreshafts: inferences for the Millingstone Horizon. Pacific Coast Archaeological Society Quarterly 22(2):21-30.
- Salls, R. A. 1991. Faunal remains and social status: an analysis of human repast in a tar pit. Abstract, Annual Meeting of the Southern California Academy of Sciences 1991(22).
- Salls, R. A. 1992. Ancient brea people. Terra Magazine 31(1):10-11.
- Savage, D. E. 1951. Late Cenozoic vertebrates of the San Francisco Bay region. University of California Publication in Geological Science 28(10):215-314.

- Savage, D. E., T. Downs and O. J. Poe. 1954. Cenozoic land life of southern California. In *Geology of southern California*, Chapter 3, Part 6, *Bulletin of the California Division of Mines* 170:53-57.
- Schultz, G. E. and C. H. Lansdown. 1972. A skull of *Bison latifrons* from Lipscomb County, Texas. *Texas Journal of Science* 23(3):393-401.
- Schultz, J. R. 1938. A late Quaternary mammal fauna from the tar seeps of McKittrick, California. *Carnegie Institution of Washington Publication* 487:111-215.
- Scott, E. 1985. They live again: sixty years of sculpture in Hancock Park. *Terra Magazine* 24(1):23-29.
- Scott, E. 1986. Out of the past: Hancock Park statuary brings prehistoric beasts to life. *Herald Examiner California Living*, 27 April 1986: 18-21.
- Scott, E. 1988. Mount up! The skeletons of Rancho La Brea on display. *Terra Magazine* 26(6):11-13.
- Scott, E. 1989. Skeletal remains of *Equus* from the Page Museum Salvage, Rancho La Brea: a preliminary report. *Current Research in the Pleistocene* 6:78-81.
- Scott, E. 1990. New record of *Equus conversidens* Owen, 1869 (Mammalia; Perissodactyla; Equidae) from Rancho La Brea. Abstract, *Journal of Vertebrate Paleontology* (Supplement to #3) 10(41A):166.
- Scott, E. 1991. Ontogenetic age and sex distributions of large *Equus* (Mammalia; Perissodactyla; Equidae) from Rancho La Brea, Los Angeles, California. Abstract, Annual Meeting of the Southern California Academy of Sciences 1991(11).
- Scott, E. 1991. Was La Brea woman a mother? Abstract, Annual Meeting of the Southern California Academy of Sciences 1991(20).
- Scott, E. 1992. New specimens of Pleistocene *Equus* (Mammalia, Perissodactyla, Equidae) from Riverside County, California. Abstract, *Journal of Vertebrate Paleontology* (Supplement to #3) 12(149):51A.
- Scott, E. and S. M. Cox. 1993. *Arctodus simus* (Cope, 1879) from Riverside County, California. *PaleoBios* 15(2):27-36.
- Scott, E. and S. Gust. 1990. Sexual dimorphism in fossil populations: the Rancho La Brea horse through time. Abstract, *PaleoBios* (Supplement to #49) 13(49):8.
- Scott, E., R. L. Reynolds, D. E. Bleitz and R. A. Salls. 1991. Prehistoric artifacts from Rancho La Brea. Abstract, Annual Meeting of the Southern California Academy of Sciences 1991(21).
- Scott, F. M. 1972. Stallate epidermal hairs, some 10,000 years old. *News and Notes, Madrono* 21(7):485.
- Seymour, K. 1993. Size change in North American Quaternary jaguars. In: *Morphological Change in Quaternary Mammals of North America*, R. A. Martin and A. D. Barnosky, editors, New York: Cambridge University Press, pp. 343-372.
- Shaw, C. A. 1979. Techniques used in excavation of LACM 6909 (Pit 91), Rancho La Brea. Abstract, Annual Meeting of the Southern California Academy of Sciences 58:29.
- Shaw, C. A. 1982. Techniques used in excavation, preparation, and curation of fossils from Rancho La Brea. *Curator* 25(1):63-77.
- Shaw, C. A. 1988. Body by Fischer and Bessom. *Terra Magazine* 26(6):13-16.

- Shaw, C. A. 1989. The collection of pathologic bones at the George C. Page Museum, Rancho La Brea, California: a retrospective view. Abstract, *Journal of Vertebrate Paleontology* (Supplement to #3) 9(3):38A.
- Shaw, C. A. 1992. How the fossil were preserved. *Terra Magazine* 31(1):43.
- Shaw, C. A. 1992. Old Wounds: The paleopathology of Rancho La Brea. *Terra Magazine* 31(1):17.
- Shaw, C. A. 1992. The sabertoothed cats. *Terra Magazine* 31(1):26-27.
- Shaw, C. A. and S. M. Cox. 1993. The giant short-faced bear. In: *Bears. Magestic creatures of the wild.* pp. 22-23, Emmaus, Pennsylvania: Rodale Press, Incorporated, 240 p.
- Shaw, C. A., F. P. Heald and M. L. Romig. 1991. Paleopathological evidence of social behavior in *Smilodon fatalis* from Rancho La Brea. Abstract, Annual Meeting of the Southern California Academy of Sciences 1991(19).
- Shaw, C. A. and J. P. Quinn. 1986. Rancho La Brea: a look at coastal southern California's past. *California Geology*, 39(6):123-133.
- Shaw, C. A. and J. P. Quinn. 1992. Entrapment events. *Terra Magazine* 31(1):42.
- Shaw, C. A. and A. E. Tejada-Flores. 1985. Biomechanical implications of the variation in *Smilodon* ectocuneiforms from Rancho La Brea. *Natural History Museum of Los Angeles County Contributions in Science* 359:1-8.
- Shackleford, J. M. and R. W. G. Wyckoff. 1964. Collagen in fossil teeth and bones. *Journal of Ultrastructure Research* 11:173-180.
- Shermis, S. 1979. The La Brea woman. Abstract, Annual Meeting of the Southern California Academy of Sciences 85:43.
- Shermis, S. 1983. Healed massive pelvic fracture in a *Smilodon* from Rancho La Brea. *Paleobios* 1(3):121-126.
- Shermis, S. 1984. Healed massive pelvic trauma in a *Smilodon* from Rancho La Brea. Abstract, Annual Meeting of the Southern California Academy of Sciences 37:18.
- Shermis, S. 1985. Alveolar osteitis and other oral diseases in *Smilodon californicus*. *Ossa* 12:187-196.
- Shermis, S. 1985. Canine fracture avulsion in *Smilodon californicus*. *Bulletin of the Southern California Academy of Sciences* 84(2):86-95.
- Sibley, C. 1939. Fossil fringillids from Rancho La Brea. *Condor* 41:126-127.
- Sibley, C. 1939. Chipping sparrows in the Rancho La Brea. *Condor* 41:258-259.
- Sibley, G. 1950. A very early resident. *Los Angeles County Museum of Natural History Quarterly* 8(2):13-14.
- Sibley, G. 1967. La Brea story. *Los Angeles County Museum of Natural History, Education Division*, 46 p.
- Sibley, G. 1977. A new home for Rancho La Brea fossils. *Wards Bulletin, Biology, Earth Science and Chemistry* 17(105):

Sinclair, W. J. 1910. Dermal bones of *Paramylodon* from the asphaltum deposits of Rancho La Brea, near Los Angeles, California. *Proceedings of the American Philosophical Society* 49:191-195.

Slaughter, B. H. 1966. *Platygonus compressus* and associated fauna from the Laubach Cave of Texas. *American Midland Naturalist* 75:475-494.

Snure, H. 1924. A roentgen-ray study of the La Brea (Calif.) fossils. *American Journal of Roentgenology and Radium Therapy* 11(4):351-354.

Soper, E. K. 1943. Salt Lake Oil Field. In *Geology of California--the occurrence of oil and gas*, O. P. Jenkins, editor, California Division of Mines Bulletin 118(8):284-286.

Sperling, J. A. 1991. Diatoms of Rancho La Brea. Abstract, Annual Meeting of the Southern California Academy of Sciences 1991(4).

Steadman, D. W. 1980. A review of the osteology and paleontology of turkeys (Aves: Meleagridinae). In *Papers in avian paleontology honoring Hildegard Howard, K. E. Campbell, Jr., editor*, Los Angeles County Museum of Natural History Contributions in Science 330:131-207.

Steadman, D. W. and P. S. Martin. 1984. Extinction of birds in the late Pleistocene of North America. In *Quaternary Extinctions*, P. S. Martin and R. G. Klein, editors, Tucson: University of Arizona Press, pp. 466-477.

Steinmetz, J. J. 1991. Ostracodes of the Rancho La Brea deposits. Abstract, Annual Meeting of the Southern California Academy of Sciences 1991(6).

Stirton, R. A. 1938. Notes on some late Tertiary and Pleistocene antilocaprids. *Journal of Mammalogy* 19(3):336-370.

Stock, C. 1913. *Nothrotherium* and *Megalonyx* from the Pleistocene of southern California. University of California Publications, Bulletin of the Department of Geology 7(17):341-358. (TYPE, Page: *Nothrotherium graciliceps* sp. nov.; Berkeley: *Megalonyx californicus* sp. nov.)

Stock, C. 1914. The systematic position of the mylodont sloths from Rancho La Brea. *Science* 39:761-763.

Stock, C. 1914. Skull and dentition of the mylodont sloths of Rancho La Brea. University of California Publications, Bulletin of the Department of Geology 8(18):319-334.

Stock, C. 1914. Systematic position of the mylodont sloths from Rancho La Brea. Abstract, Bulletin of the Geological Society of America 25:143-144.

Stock, C. 1917. Recent studies on the skull and dentition of *Nothrotherium* from Rancho La Brea. University of California Publications, Bulletin of the Department of Geology 10(10):137-164.

Stock, C. 1917. Further observation on the skull structure of mylodont sloths from Rancho La Brea. University of California Publications, Bulletin of the Department of Geology 10(11):165-178. (TYPE, Page: *Mylyodon harlani tenuiceps* ssp. nov.)

Stock, C. 1917. Structure of the pes in *Mylyodon harlani*. University of California Publications, Bulletin of the Department of Geology 10(16):267-286.

Stock, C. 1920. A mounted skeleton of *Mylyodon harlani*. University of California Publications, Bulletin of the Department of Geology 12(6):425-430.

Stock, C. 1925. Cenozoic gravigrade edentates of western North America with special reference to the

Pleistocene Megalonychinae and Mylodontidae of Rancho La Brea. Carnegie Institution of Washington Publication 331:1-206. (TYPE, Berkeley: *Megalonyx jeffersoni californicus* ssp. nov.)

Stock, C. 1926. Report of Dr. Chester Stock. Carnegie Institution Year Book Number 25, 1925-1926, pp. 403-407.

Stock, C. 1927. Report of researches by Chester Stock. Carnegie Institution Year Book Number 26, 1926-1927, pp. 364-365.

Stock, C. 1928. A peccary from the McKittrick Pleistocene, California. Carnegie Institution of Washington Publication 393:25-27.

Stock, C. 1928. Report of researches by Chester Stock. Carnegie Institution Year Book Number 27, 1927-1928, pp. 387-389.

Stock, C. 1929. Report of researches by Chester Stock. Carnegie Institution Year Book Number 28, 1928-1929, pp. 390-391.

Stock, C. 1929. Significance of abraded and weathered mammalian remains from Rancho La Brea. Bulletin of the Southern California Academy of Sciences 28(1):1-5.

Stock, C. 1929. A census of the Pleistocene mammals of Rancho La Brea, based on the collections of the Los Angeles Museum. Journal of Mammalogy 10(4):281-289.

Stock, C. 1930. Rancho La Brea: a record of Pleistocene life in California. Los Angeles Museum, Science Series 1:1-84.

Stock, C. 1930. Report of researches by Chester Stock. Carnegie Institution Year Book Number 29, 1929-1930, p. 399.

Stock, C. 1931. Report of researches by Chester Stock. Carnegie Institution Year Book Number 30, 1930-1931, pp. 450-451.

Stock, C. 1932. Asphalt deposits and Quaternary life of Rancho La Brea. Southern California XVI International Geological Congress, Guide-book 15:21-23.

Stock, C. 1932. Is *Felis atrox* of Rancho La Brea a lion or a tiger? Abstract, Bulletin of the Geological Society of America 43:290.

Stock, C. 1932. Researches by Chester Stock. Carnegie Institution Year Book Number 31, 1931-1932, pp. 329-330.

Stock, C. 1933. Researches by Chester Stock. Carnegie Institution Year Book Number 32, 1932-1933, pp. 329-330.

Stock, C. 1934. Researches by Chester Stock. Carnegie Institution Year Book Number 33, 1933-1934, pp. 311-313.

Stock, C. 1936. Researches of Chester Stock. Carnegie Institution of Washington Year Book Number 35, 1935-1936, pp. 319-321.

Stock, C. 1936. The succession of mammalian forms within the period in which human remains are known to occur in America. American Naturalist 70:324-331.

Stock, C. 1936. *Ursus*, or the past of the California bears. Westways, November, 28(11):30.

- Stock, C. 1937. California buffalo of long ago. *Westways*, February, 29(2):29.
- Stock, C. 1937. Researches of Chester Stock. *Carnegie Institution of Washington Year Book Number 36, 1936-1937*, pp. 343-345.
- Stock, C. 1938. A coyote-like wolf-jaw from the Rancho La Brea Pleistocene. *Bulletin of the Southern California Academy of Sciences* 37(2):49-51. (TYPE, Page: *Canis petrolei* sp. nov.)
- Stock, C. 1938. Researches of Chester Stock. *Carnegie Institution of Washington Year Book Number 37, 1937-1938*, pp. 353-355.
- Stock, C. 1940. Paleontological researches. *Carnegie Institution of Washington Year Book Number 39, 1939-1940*, pp. 291-292.
- Stock, C. 1942. Rancho La Brea: a record of Pleistocene life in California. 2nd Edition, Los Angeles County Museum, Science Series 4, Paleontology Publication 4:1-73.
- Stock, C. 1943. New Ice Age bison mount for Rancho La Brea exhibit. *Los Angeles County Museum Quarterly* 3(2-4):12.
- Stock, C. 1944. California bears, present and past. *Engineering and Science Monthly* 7(7):12-14.
- Stock, C. 1946. Future development of Earth history and the study of fossils at Los Angeles County Museum. *Los Angeles County Museum Quarterly* 5(3):8-9.
- Stock, C. 1946. Rancho La Brea: a record of Pleistocene life in California. 3rd Edition, Los Angeles County Museum, Science Series 11, Paleontology Publication 7:1-74.
- Stock, C. 1949. Hancock Park. Pamphlet.
- Stock, C. 1949. Rancho La Brea: a record of Pleistocene life in California. 4th Edition, Los Angeles County Museum, Science Series 13, Paleontology Publication 8:1-81.
- Stock, C. 1953. Rancho La Brea: a record of Pleistocene life in California. 5th Edition, Los Angeles County Museum, Science Series 15, Paleontology Publication 9:1-80.
- Stock, C. 1956. Rancho La Brea. A record of Pleistocene life in California. Sixth edition, Los Angeles County Museum of Natural History, Science Series 20, Paleontology 11:1-81.
- Stock, C. 1992. Rancho La Brea. A record of Pleistocene life in California. Seventh edition, Natural History Museum of Los Angeles County, Science Series 37:1-113.
- Stock, C. and L. Butler. 1940. Fossils of our forebears. *Westways Magazine*, August, pp. 14-15. (Chart of localities)
- Stock, C. and J. F. Lance. 1948. The relative lengths of limb elements in *Canis dirus*. *Bulletin of the Southern California Academy of Sciences* 47(3):79-83.
- Stock, C., J. F. Lance and J. O. Nigra. 1946. A newly mounted skeleton of the extinct dire wolf from the Pleistocene of Rancho La Brea. *Bulletin of the Southern California Academy of Sciences* 45(2):108-110.
- Stoner, R. C. 1913. Recent observations on the mode of accumulation of the Pleistocene bone deposits of Rancho La Brea. *University of California Publications, Bulletin of the Department of Geology* 7(20):387-396.
- Sushkin, P. P. 1928. On the affinities of *Pavo californicus*. *Ibis*, January, pp. 135-138.

- Swarth, H. S. 1915. Guide to the exhibit of fossil animals from Rancho La Brea. Los Angeles Museum of History, Science and Art, Miscellaneous Publications 1:1-34.
- Swift, C. C. 1979. Freshwater fish of the Rancho La Brea deposit. Abstract, Annual Meeting of the Southern California Academy of Sciences 88:44.
- Swift, C. C. 1989. Freshwater fishes from the Rancho La Brea deposit, Southern California. Bulletin of the Southern California Academy of Sciences 88(3):93-102.
- *T., M. R. 1933. Book Review: The Felidae of Rancho La Brea by J. C. Merriam and C. Stock, American Journal of Science 25(5):345-346.
- Tate, B. 1995. Evidence for atlatls at Rancho La Brea. The Atlatl, The Newsletter of the World Atlatl Association, Incorporated 8(4):1-3.
- Taylor, W. P. 1911. A new antelope from the Pleistocene of Rancho La Brea. University of California Publications, Bulletin of the Department of Geology 6(10):191-197. (TYPE, Berkeley: *Capromeryx minor* sp. nov.)
- Tejada-Flores, A. E. 1979. Smilodon hyoids from Rancho La Brea. Abstract, Annual Meeting of the Southern California Academy of Sciences 91:46.
- Tejada-Flores, A. E. and C. A. Shaw. 1984. Tooth replacement and skull growth in Smilodon from Rancho La Brea. Journal of Vertebrate Paleontology 4(1):114-121.
- Templeton, B. C. 1955. Fossil plants in the La Brea deposits. Los Angeles County Museum of Natural History Quarterly 12(1):8-11.
- Templeton, B. C. 1964. The fruits and seeds of the Rancho La Brea Pleistocene deposits. Doctoral Dissertation, Oregon State University, Corvallis, Oregon. 224 p.
- Tieje, A. J. 1926. The Pliocene and Pleistocene history of the Baldwin Hills, Los Angeles County, California. Bulletin of the American Association of Petroleum Geologists 10:502-512.
- Thompson, S. E. 1995. Death Trap. The story of the La Brea tar pits. Minneapolis: Lerner Publications Company, 72 p. (Written at Middle School/High School level)
- Thorpe, W. A. 1930. The biology of the petroleum fly (*Psilopa petrolii*, Coq.). Transactions of the Entomological Society of London 78:331-344.
- Thorpe, W. A. 1931. The biology of the petroleum fly. Science 73:101-103. (R)
- Valentine, V. W. and J. H. Lipps. 1970. Marine fossils at Rancho La Brea. Science 169:277-278.
- Van Valkenburgh, B. and F. Hertel. 1993. Tough times at La Brea: Tooth breakage in large carnivores of the late Pleistocene. Science 261:456-459.
- Van Valkenburgh, B., F. Hertel and W. Anyonge. 1991. Feeding behavior of Smilodon: Evidence from dental microwear and tooth fracture frequencies. Abstract, Annual Meeting of the Southern California Academy of Sciences 1991(18).
- vonBloeker, Jr., J. C. 1944. New locality records for some west American shrews. Journal of Mammalogy 25:311-312.
- Waldo, E. 1958. Wildlife of yesteryear. Louisiana Conservationist, Wildlife Bulletin 68:1-7.

- Wallace, W. J. 1955. A suggested chronology for southern California coastal archaeology. *Southwestern Journal of Anthropology* 11:214-230.
- Wallace, W. J. 1971. A suggested chronology for southern California coastal archaeology. In: *The California Indians. A source book.* pp. 186-201. R. F. Heizer and M. A. Whipple, editors, Berkeley: University of California Press, 619 p.
- Warrick, D. M. 1994. The dire wolf courtesy of the George C. Page Museum. *Soul of the Wolf* 7(3):24-26.
- Warter, J. K. 1976. Late Pleistocene plant communities - evidence from the Rancho La Brea tar pits. *Symposium Proceedings on Plant Communities of Southern California, Special Publication of the California Native Plant Society* 2:32-39.
- Warter, J. K. 1979. The environment of Pit 91, Rancho La Brea, as interpreted by plant remains. *Abstract, Annual Meeting of the Southern California Academy of Sciences* 87:44.
- Warter, J. K. 1980. Late Pleistocene environment of the Los Angeles Basin based on plant remains from the Rancho La Brea tar pits. *Abstract, Bulletin of the Ecol. Society of America* 61(2):107.
- Webb, S. D. 1965. The osteology of *Camelops*. *Bulletin of the Los Angeles County Museum of Natural History, Science* 1:1-54.
- Webster, R. 1979. Birding the Tar Pits - 12,000 B. C. *Los Angeles Audubon Society* 45(10):1-5.
- Wheeler, R. F. 1993. A systematic survey of *Smilodon fatalis* skulls from Rancho La Brea. *Current Research in the Pleistocene* 10:112-115.
- Wheeler, R. F. 1993. Morphological variation in *Smilodon fatalis* crania from Rancho La Brea. *Abstract, Journal of Vertebrate Paleontology (Supplement to #3)* 13:62A.
- Whistler, D. P. 1989. Late Pleistocene chipmunk, *Tamias* (Mammalia: Sciuridae), from Rancho La Brea, Los Angeles, California. *Bulletin of the Southern California Academy of Sciences* 88(3): 117-122.
- Willoughby, D. P. 1948. A statistical study of the metapodials of *Equus occidentalis* Leidy. *Bulletin of the Southern California Academy of Sciences* 47:84-94.
- Willoughby, D. P. 1974. *The empire of Equus.* South Brunswick and New York: A. S. Barnes and Co., 475 p.
- Wilson, M. C. 1991. The La Brea bison: dentitions, population dynamics, and taxonomy. *Abstract, Annual Meeting of the Southern California Academy of Sciences* 1991(12).
- Winans, M. C. 1985. Revision of North American fossil species of the genus *Equus* (Mammalia: Perissodactyla: Equidae). *Doctoral Dissertation, University of Texas at Austin.* 265 p.
- Winans, M. C. 1989. A quantitative study of North American fossil species of the genus *Equus*. In: *The Evolution of the Perissodactyls*, D. R. Prothero and R. M. Schoch, editors, New York: Oxford University Press, pp. 263-297.
- Winans, M. C. and R. C. Winans. 1982. Measuring systems, techniques, and equipment for taphonomic studies. *University of California Los Angeles, Archaeological Research Tools, Institute of Archaeology* 2:45-58.
- Woodard, G. D. and L. F. Marcus. 1971. Late Pleistocene stratigraphy, Rancho La Brea fossil deposits,

- Los Angeles, California. Abstract, Geological Society of America 3(2):218.
- Woodard, G. D. and L. F. Marcus. 1973. Rancho La Brea fossil deposits: a re-evaluation from stratigraphic and geological evidence. *Journal of Paleontology* 47(1):54-69.
- Woodard, G. D. and L. F. Marcus. 1976. Reliability of late Pleistocene correlation using C-14 dating: Baldwin Hills - Rancho La Brea, Los Angeles, California. *Journal of Paleontology* 50(1):128-132.
- Woodward, A. 1937. Atlatl dart foreshafts from the La Brea pits. *Bulletin of the Southern California Academy of Sciences* 36:41-59.
- Wyckoff, R. W. G. 1964. Proteins from Rancho La Brea fossils. *Los Angeles County Museum of Natural History Quarterly* 2(4):11.
- Wyckoff, R. W. G. 1972. *The Biochemistry of Animal Fossils*. Scientehnica Publications Limited, Bristol, Williams and Wilkins Company, Baltimore, 152 p.
- Wyckoff, R. W. G. and A. R. Doberenz. 1965. The electron microscopy of Rancho La Brea bone. *Proceedings of the National Academy of Science* 53(2):230-233.
- Wyckoff, R. W. G. and A. R. Doberenz. 1968. The strontium content of fossil teeth and bones. *Geochimica Cosmochimica Acta* 32:109-115.
- Wyckoff, R. W. G., W. F. McCaughey and A. R. Doberenz. 1964. The amino acid composition of proteins from Pleistocene bones. *Biochemica Biophysica Acta* 93:374-377.
- Wyckoff, R. W. G., E. Wagner, P. Matter III and A. R. Doberenz. 1963. Collagen in fossil bone. *Proceedings of the National Academy of Science* 50(2):215-218.
- Wyman, L. E. 1918. Notes on the Pleistocene fossils obtained from Rancho La Brea asphalt pits. *Los Angeles Museum, Miscellaneous Publications* 2:1-35. (Revised 1922 and 1926).
- Wyman, L. E. 1926. Museum sketches: a unwieldy exhibit explained. *Los Angeles Museum Graphic* 1(1):32-34.
- Wyman, L. E. 1927. La Brea in retrospect. *Los Angeles Museum Graphic* 1(3):82-87.
- Young, F. B. and A. L. Cooper. 1926. Evidence of diseases as shown in fossil and prehistoric remains; paleopathology. *Transactions of the Section of Pathology and Physiology, American Medical Association*, pp. 1-11.
- Young, F. B. and A. L. Cooper. 1927. A Study in paleopathology. *Radiology*, 8:230-240.
- Zechmeister, L. and W. Lijinsky. 1953. Some neutral constituents of a natural tar originating from the La Brea pits. *Archives of Biochemistry and Biophysics* 47(2):391-395.
- Zhao, Y., D. R. Boone, R. A. Mah, J. E. Boone and L. Xun. 1989. Isolation and characterization of *Methanocorpusculum labreanum* sp. nov. from the LaBrea tar pits. *International Journal of Systematic Bacteriology* 39(1):10-13. (Non-fossil)