

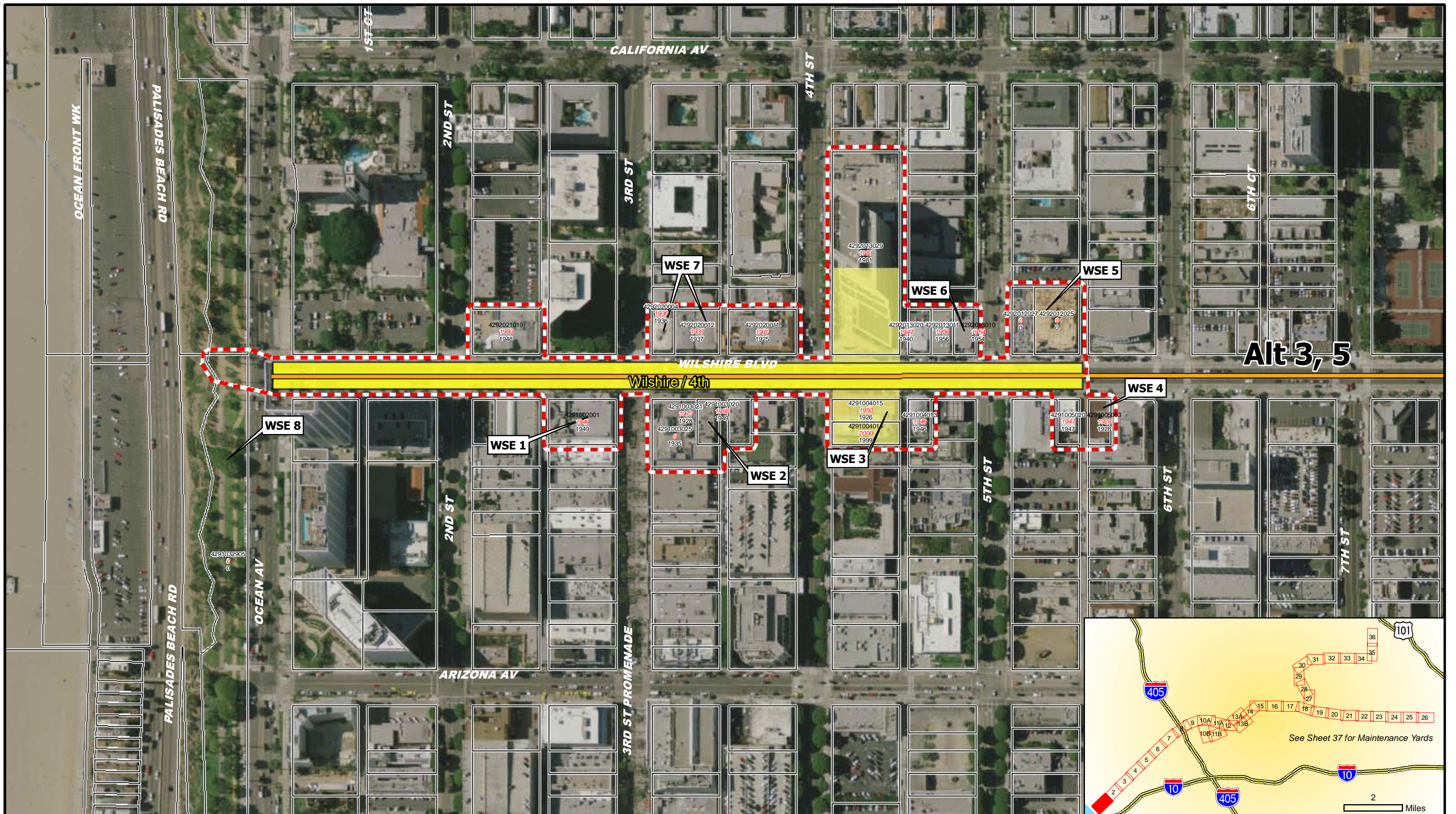


WESTSIDE SUBWAY EXTENSION

Cultural Resources Technical Report Appendix E



August 2010



Alt 3, 5

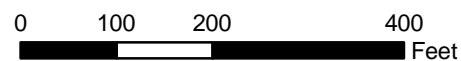
WILSHIRE/4th

Legend

- Built Environment APE
- Properties Subject to Reconnaissance Survey Activities
- Contributors to Historic District

- Alignment Alternatives and Options**
- Stations
 - Alternative 1, 2, 3, 4, 5
 - Alternative 2, 3, 5
 - Alternative 3, 5
 - Alternative 4, 5
 - Options

- WSE ID** NRHP-, CRHR-, and/or locally eligible or listed properties; and/or Contributors to a Historic District
- AIN** Effective Year Built Year
- Parcels within APE
 - Project Improvements

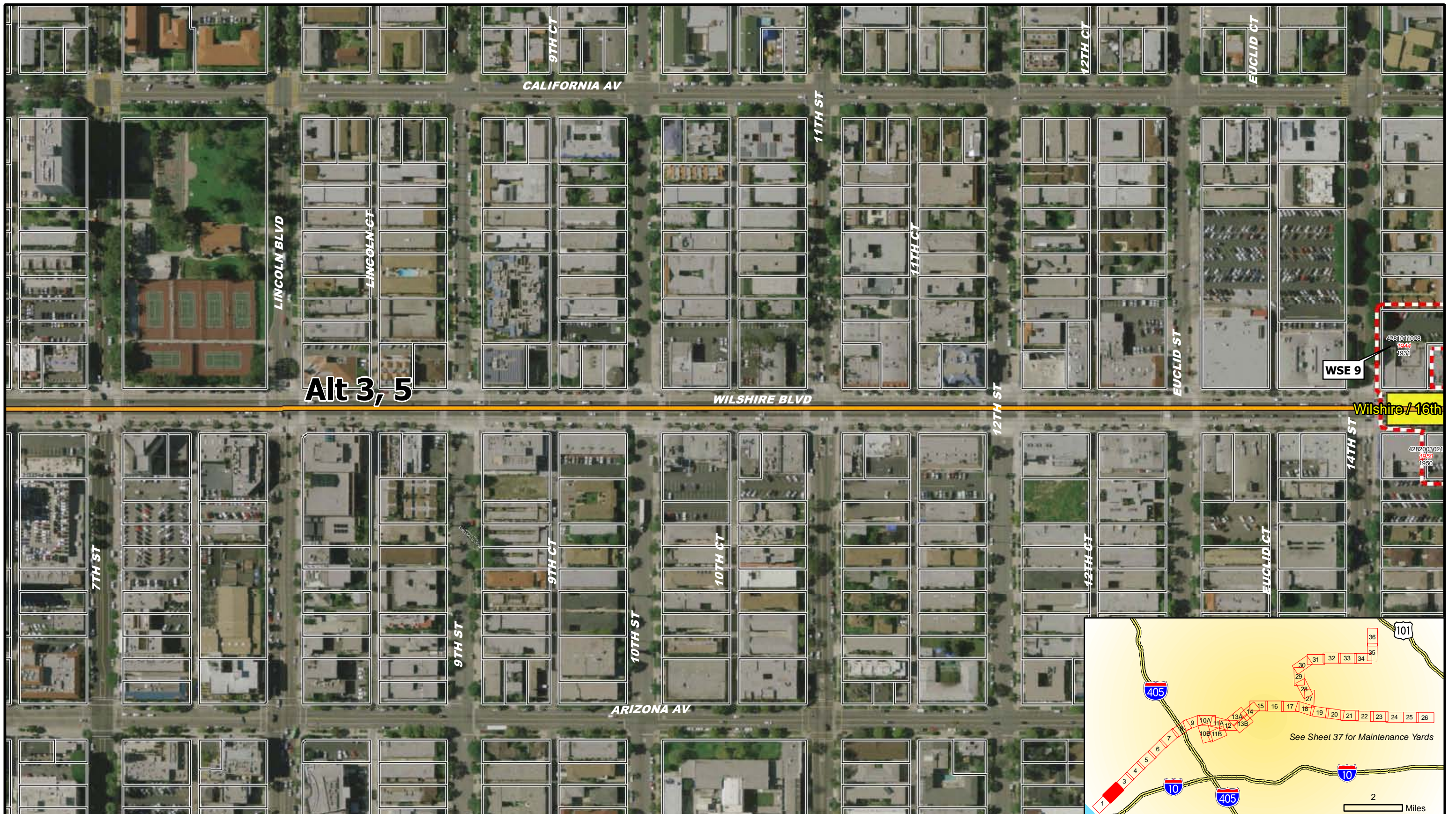


**WESTSIDE SUBWAY EXTENSION
ARCHITECTURAL AND HISTORIC RESOURCES**

March 2010

Sheet 1 of 39














Alt 3, 5

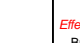
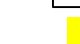
WSE 9

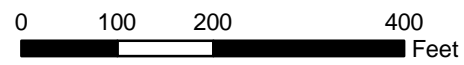
Wilshire / 16th

Legend

-  Built Environment APE
-  Properties Subject to Reconnaissance Survey Activities
-  Contributors to Historic District

- Alignment Alternatives and Options**
-  Stations
 -  Alternative 1, 2, 3, 4, 5
 -  Alternative 2, 3, 5
 -  Alternative 3, 5
 -  Alternative 4, 5
 -  Options

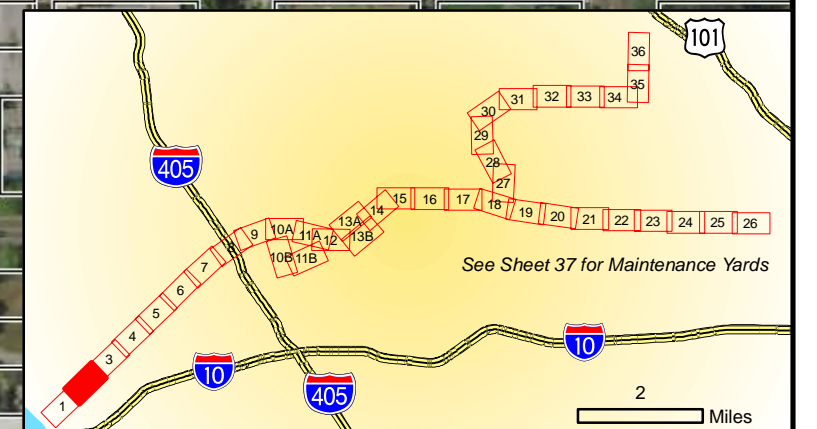
- WSE ID** NRHP-, CRHR-, and/or locally eligible or listed properties; and/or Contributors to a Historic District
- AIN** Effective Year Built Year
-  Parcels within APE
 -  Project Improvements

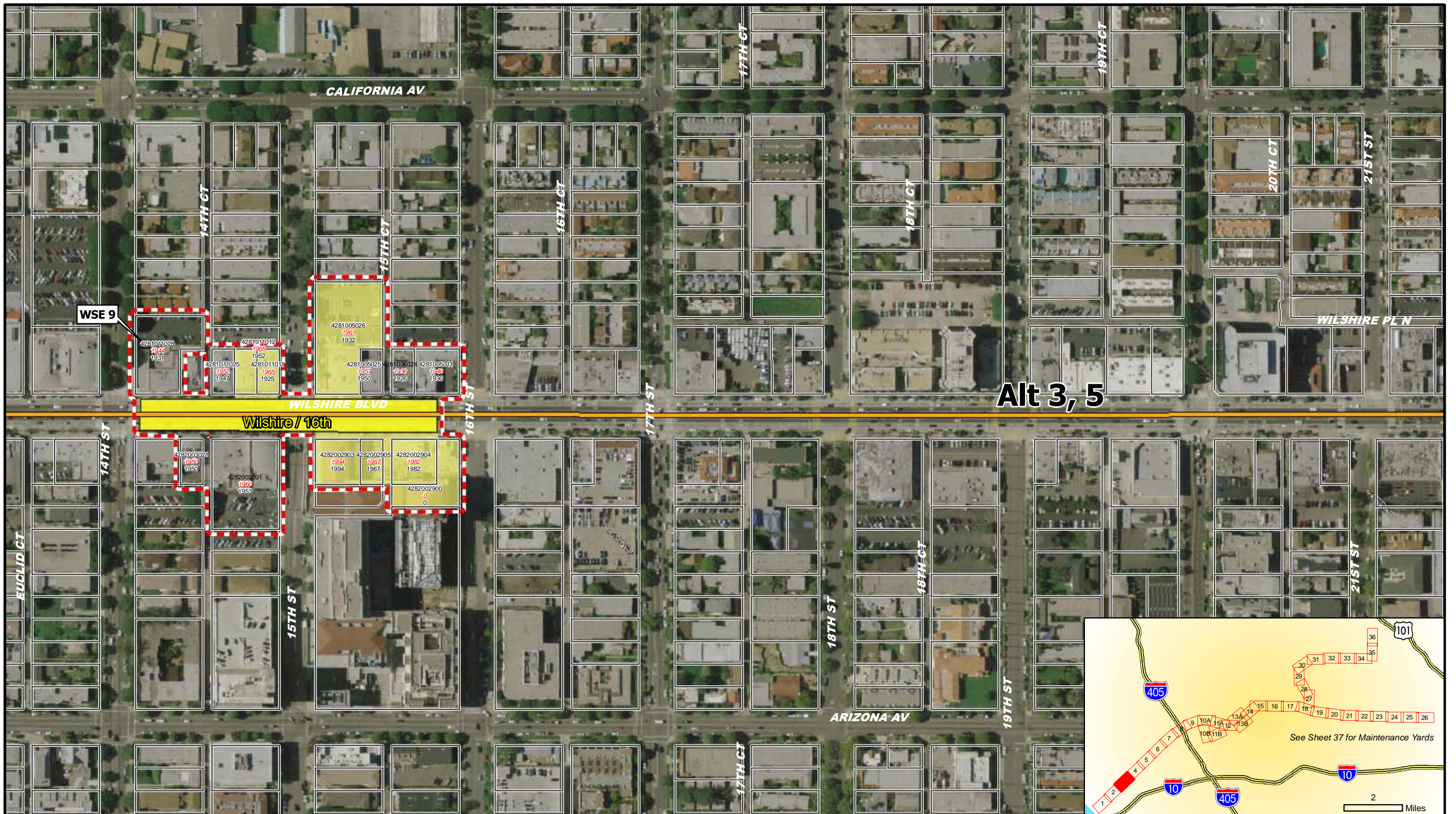


**WESTSIDE SUBWAY EXTENSION
ARCHITECTURAL AND HISTORIC RESOURCES**

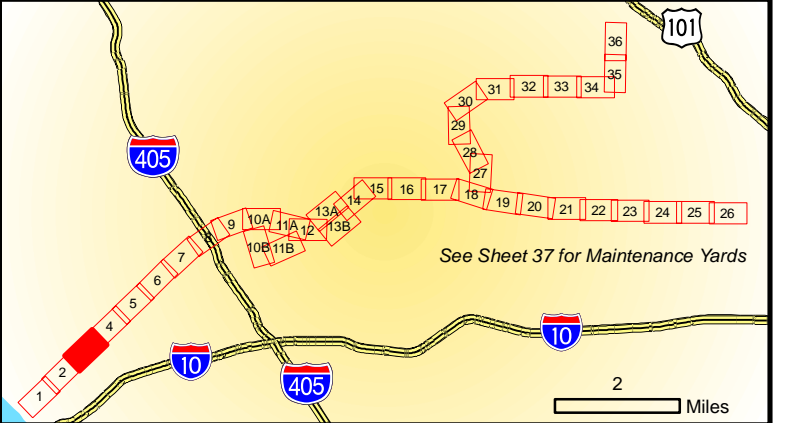
March 2010

Sheet 2 of 39





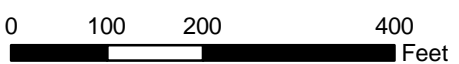
Alt 3, 5

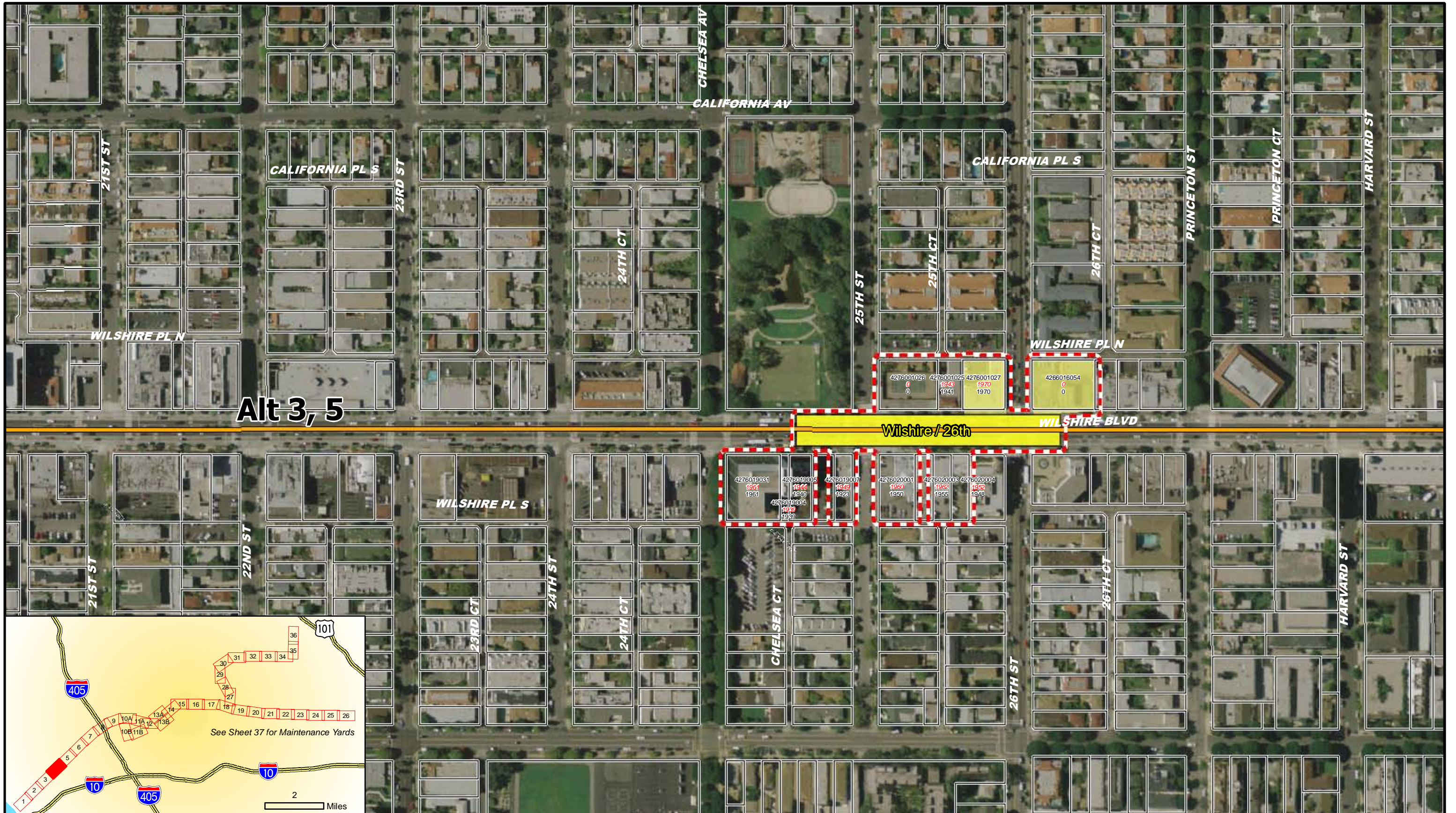


- Legend**
- Built Environment APE
 - Properties Subject to Reconnaissance Survey Activities
 - Contributors to Historic District

- Alignment Alternatives and Options**
- Stations
 - Alternative 1, 2, 3, 4, 5
 - Alternative 2, 3, 5
 - Alternative 3, 5
 - Alternative 4, 5
 - Options

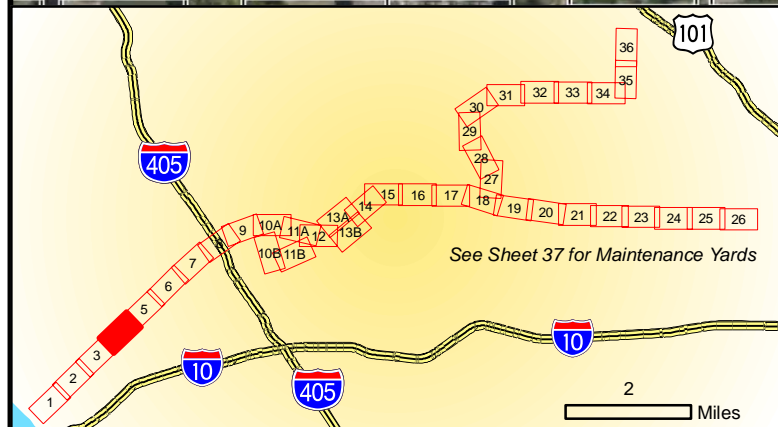
- WSE ID** NRHP-, CRHR-, and/or locally eligible or listed properties; and/or Contributors to a Historic District
- AIN** Parcels within APE
- Effective Year**
- Built Year**
- Project Improvements





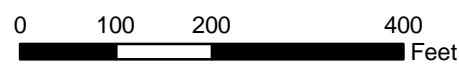
Alt 3, 5

Wilshire / 26th



Legend

- Built Environment APE
- Properties Subject to Reconnaissance Survey Activities
- Contributors to Historic District
- Stations
- Alignment Alternatives and Options**
- Alternative 1, 2, 3, 4, 5
- Alternative 2, 3, 5
- Alternative 3, 5
- Alternative 4, 5
- Options
- WSE ID NRHP-, CRHR-, and/or locally eligible or listed properties; and/or Contributors to a Historic District
- AIN
Effective Year
Built Year Parcels within APE
- Project Improvements

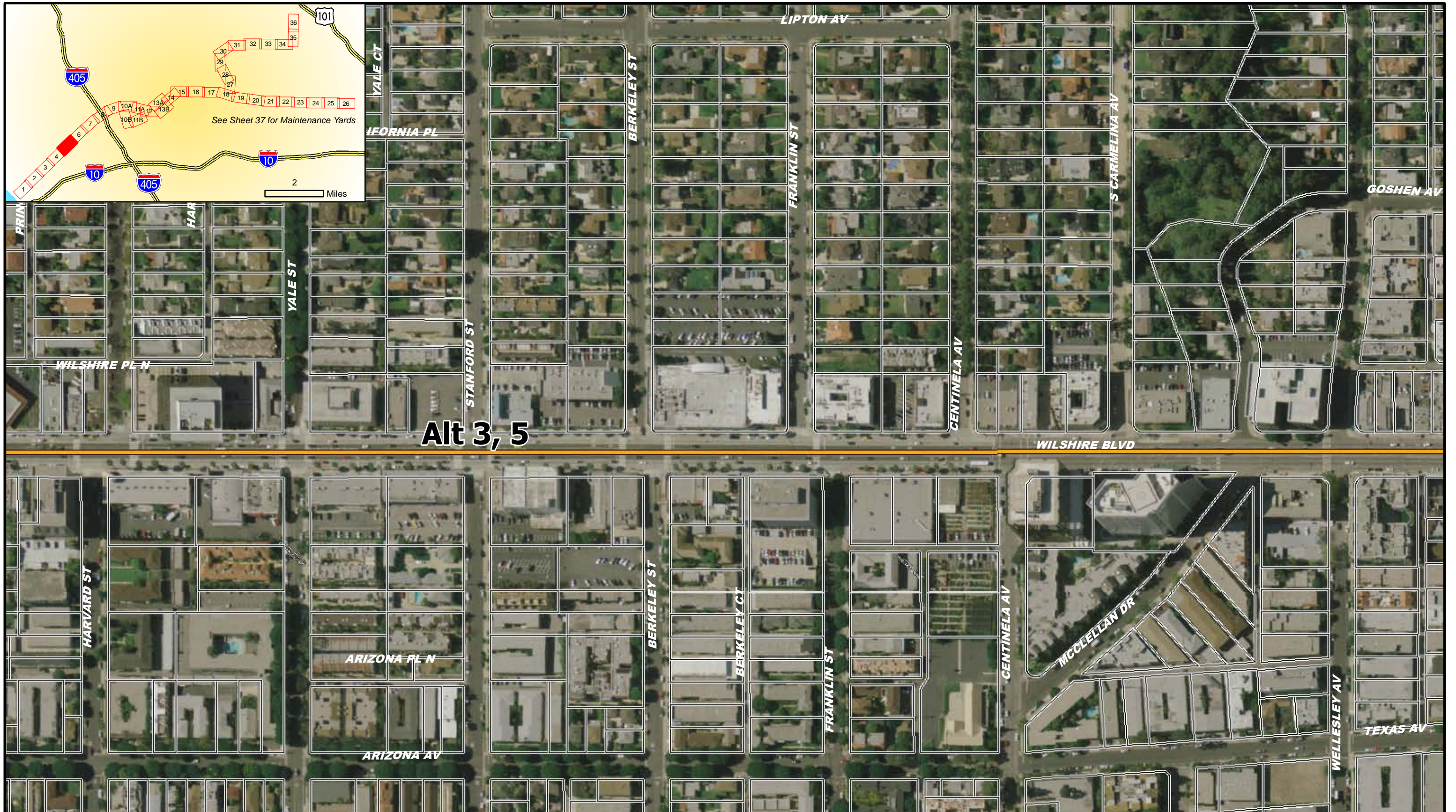


**WESTSIDE SUBWAY EXTENSION
ARCHITECTURAL AND HISTORIC RESOURCES**

March 2010

Sheet 4 of 39



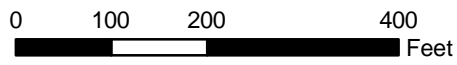


Alt 3, 5

- Legend**
- Built Environment APE
 - Properties Subject to Reconnaissance Survey Activities
 - Contributors to Historic District

- Alignment Alternatives and Options**
- Stations
 - Alternative 1, 2, 3, 4, 5
 - Alternative 2, 3, 5
 - Alternative 3, 5
 - Alternative 4, 5
 - Options

- WSE ID** NRHP-, CRHR-, and/or locally eligible or listed properties; and/or Contributors to a Historic District
- AIN** Effective Year
Built Year
- Parcels within APE
 - Project Improvements

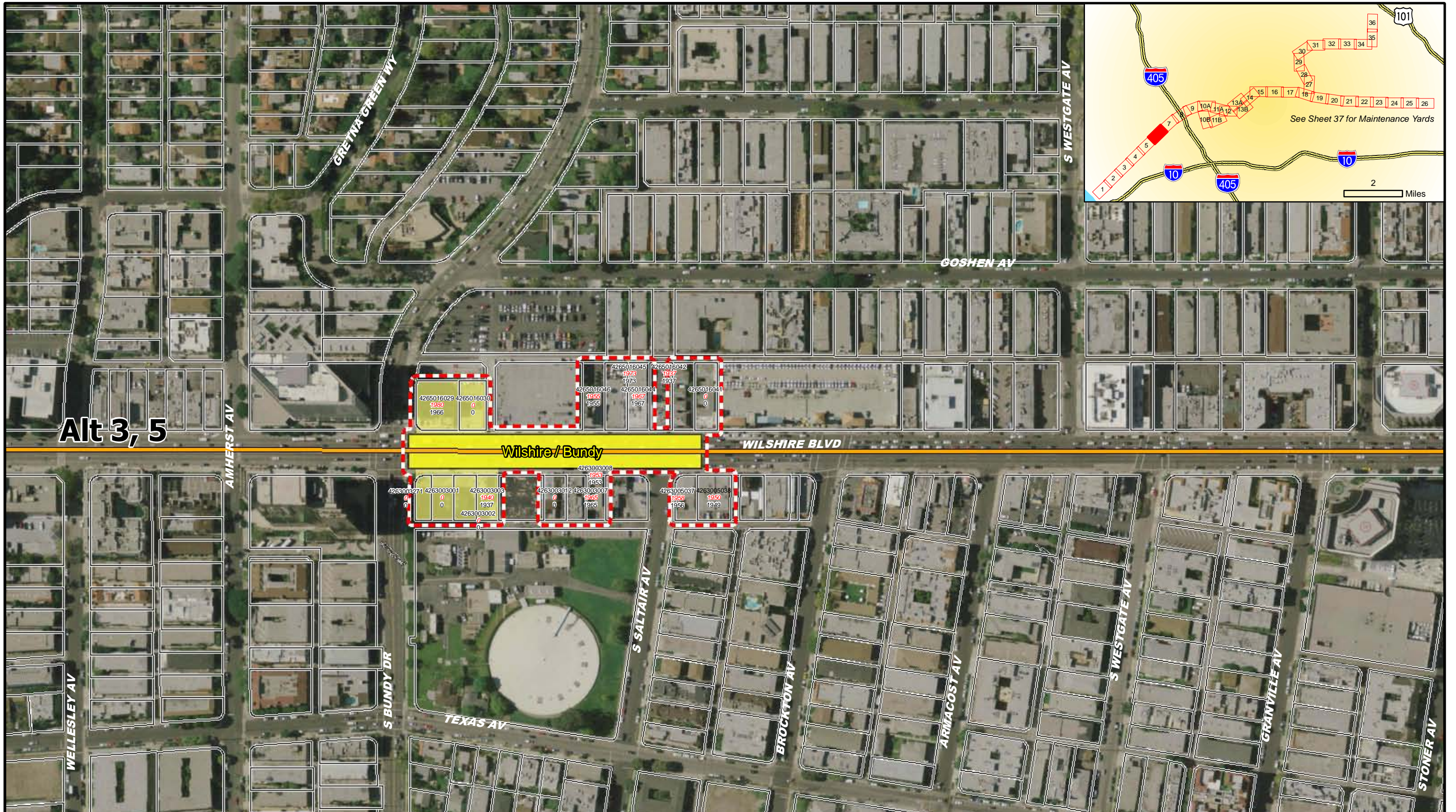


**WESTSIDE SUBWAY EXTENSION
ARCHITECTURAL AND HISTORIC RESOURCES**

March 2010

Sheet 5 of 39





Alt 3, 5

Wishire/Bundy

WILSHIRE BLVD

TEXAS AV

S SALT AIR AV

BROCKTON AV

ARMAGOST AV

S WESTGATE AV

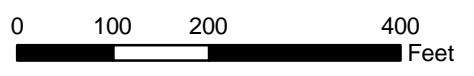
GRANVILLE AV

STONER AV

- Legend**
- Built Environment APE
 - Properties Subject to Reconnaissance Survey Activities
 - Contributors to Historic District

- Alignment Alternatives and Options**
- Alternative 1, 2, 3, 4, 5
 - Alternative 2, 3, 5
 - Alternative 3, 5
 - Alternative 4, 5
 - Options

- WSE ID** NRHP-, CRHR-, and/or locally eligible or listed properties; and/or Contributors to a Historic District
- AIN** Effective Year / Built Year
- Parcels within APE
 - Project Improvements

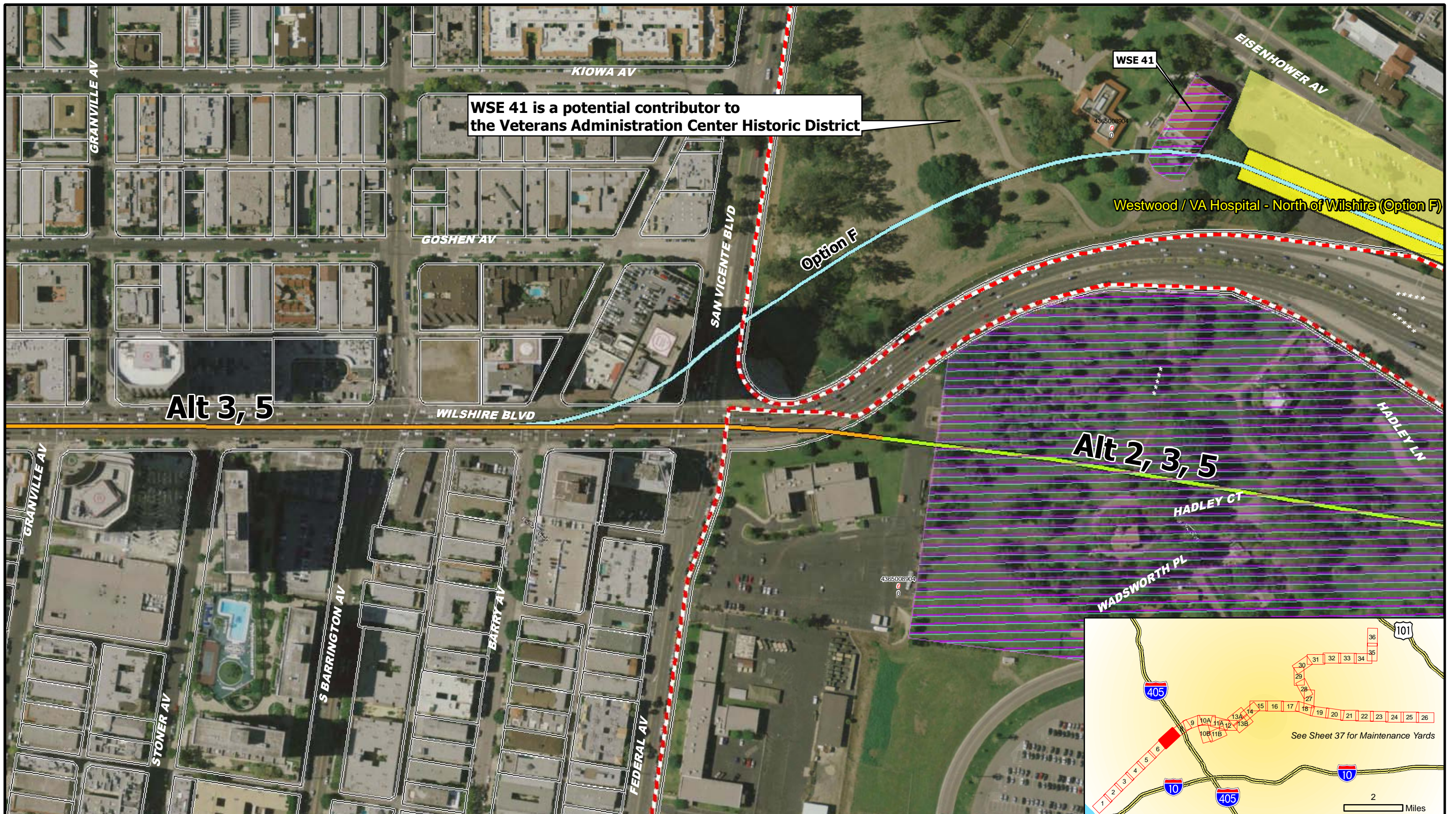


**WESTSIDE SUBWAY EXTENSION
ARCHITECTURAL AND HISTORIC RESOURCES**

March 2010

Sheet 6 of 39





WSE 41 is a potential contributor to the Veterans Administration Center Historic District

WSE 41

Westwood / VA Hospital - North of Wilshire (Option F)

Alt 3, 5

Alt 2, 3, 5

- Legend**
- Built Environment APE
 - Properties Subject to Reconnaissance Survey Activities
 - Contributors to Historic District

- Alignment Alternatives and Options**
- Alternative 1, 2, 3, 4, 5
 - Alternative 2, 3, 5
 - Alternative 3, 5
 - Alternative 4, 5
 - Options

- WSE ID** NRHP-, CRHR-, and/or locally eligible or listed properties; and/or Contributors to a Historic District
- AIN** Effective Year Built Year
- Parcels within APE
 - Project Improvements



**WESTSIDE SUBWAY EXTENSION
ARCHITECTURAL AND HISTORIC RESOURCES**

March 2010	Sheet 7 of 39	
------------	---------------	--