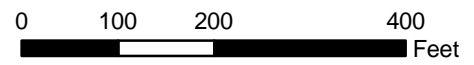


- Legend**
- Built Environment APE
 - Properties Subject to Reconnaissance Survey Activities
 - Contributors to Historic District

- Alignment Alternatives and Options**
- Stations
 - Alternative 1, 2, 3, 4, 5
 - Alternative 2, 3, 5
 - Alternative 3, 5
 - Alternative 4, 5
 - Options

- WSE ID** NRHP-, CRHR-, and/or locally eligible or listed properties; and/or Contributors to a Historic District
- AIN** Effective Year
Built Year
- Parcels within APE
 - Project Improvements

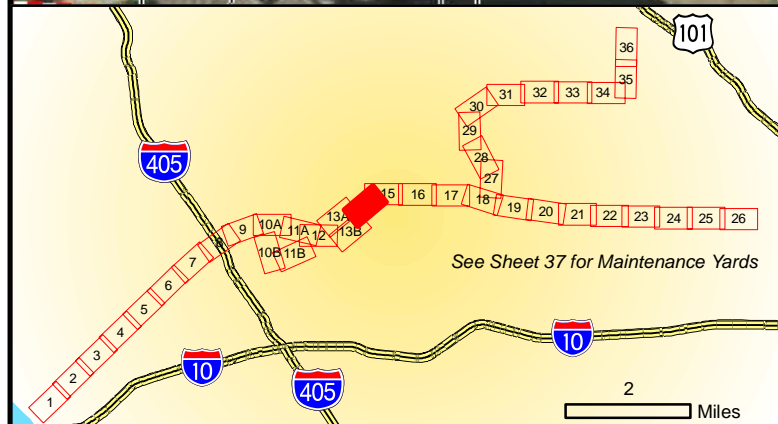
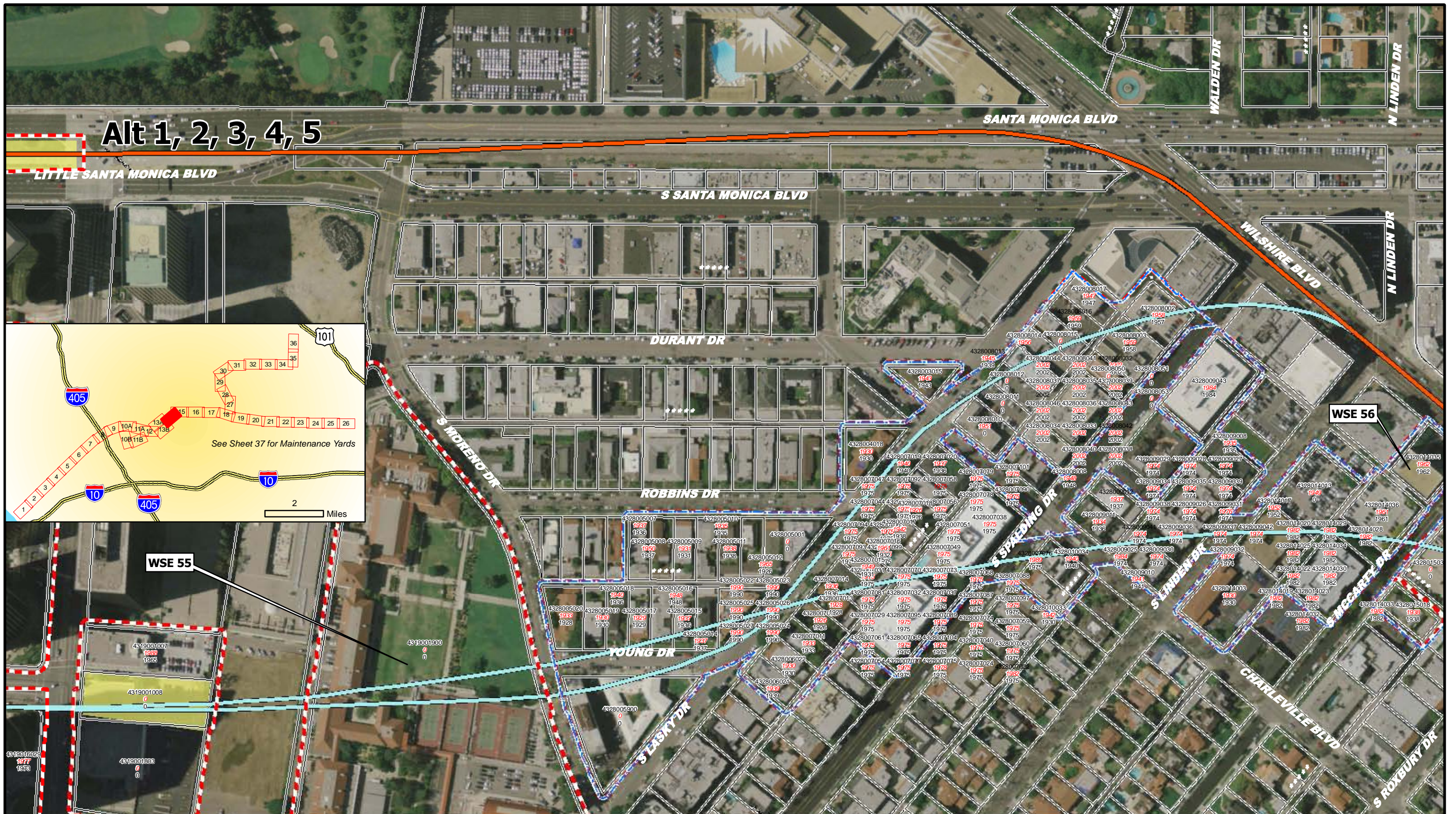


**WESTSIDE SUBWAY EXTENSION
ARCHITECTURAL AND HISTORIC RESOURCES**

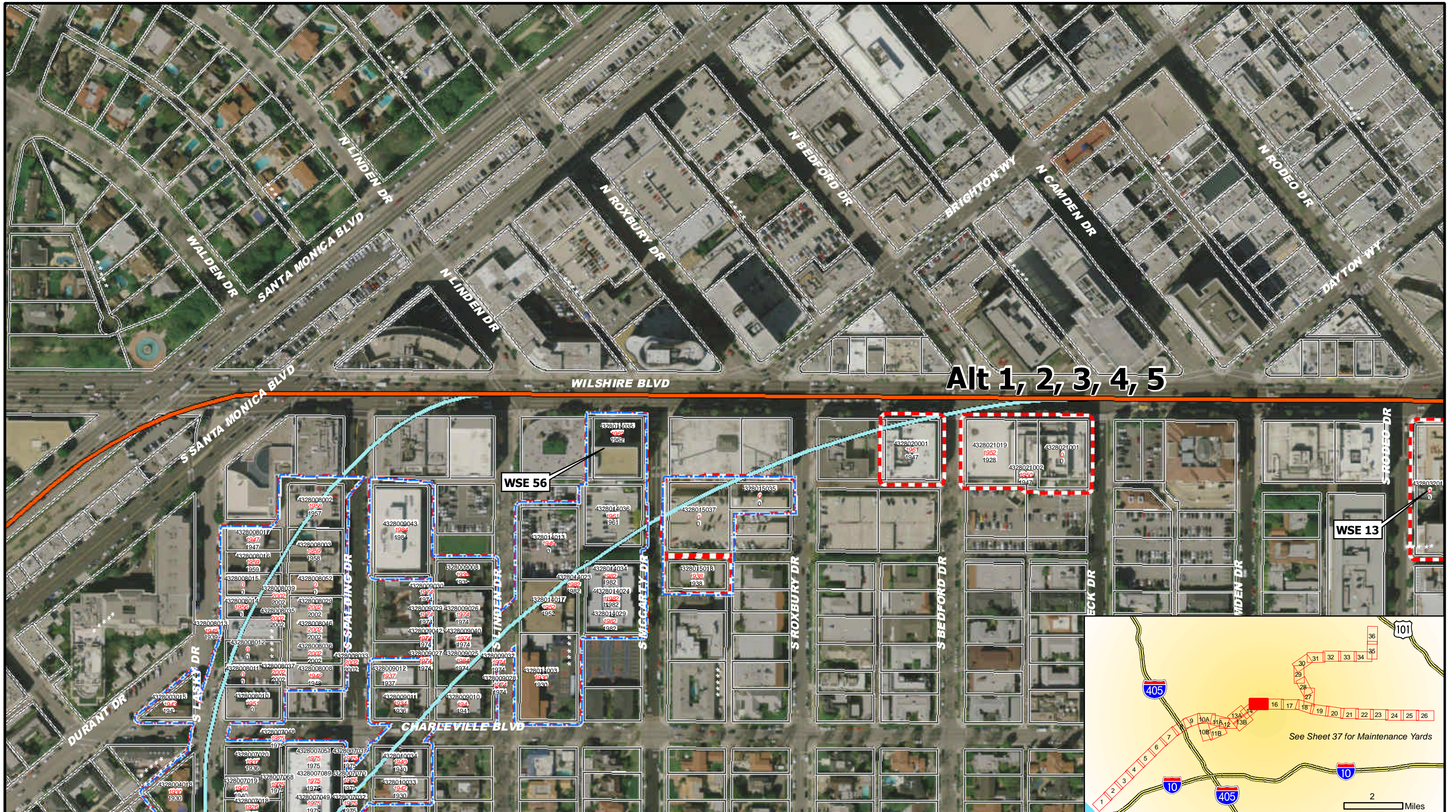
March 2010

Sheet 13B of 39





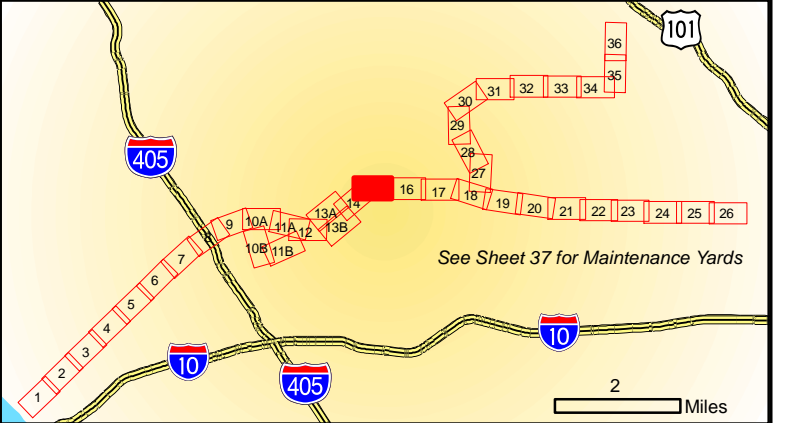
Legend Built Environment APE Properties Subject to Reconnaissance Survey Activities Contributors to Historic District		Stations Stations Alignment Alternatives and Options Alternative 1, 2, 3, 4, 5 Alternative 2, 3, 5 Alternative 3, 5 Alternative 4, 5 Options		WSE ID NRHP-, CRHR-, and/or locally eligible or listed properties; and/or Contributors to a Historic District Parcels within APE Project Improvements		WESTSIDE SUBWAY EXTENSION ARCHITECTURAL AND HISTORIC RESOURCES 			
				March 2010		Sheet 14 of 39			



Alt 1, 2, 3, 4, 5

WSE 56

WSE 13



Legend

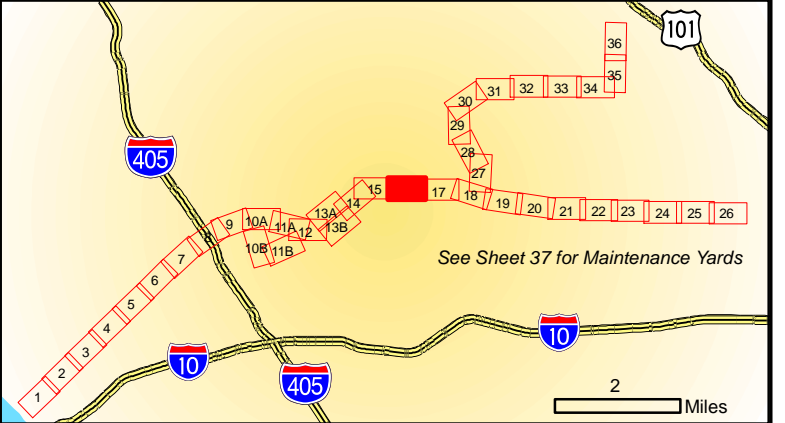
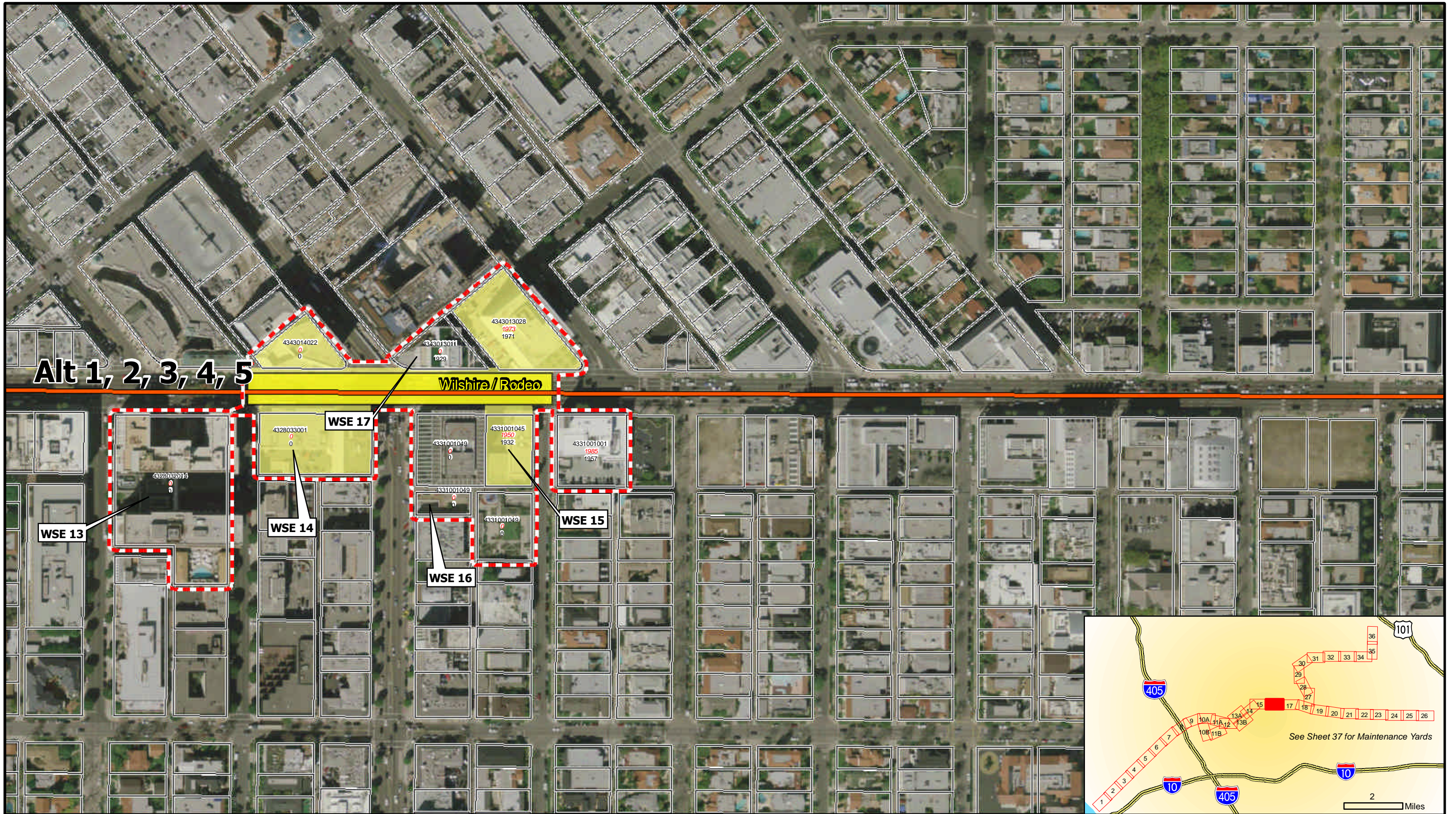
- Stations
- Built Environment APE
- Properties Subject to Reconnaissance Survey Activities
- Contributors to Historic District
- Alignment Alternatives and Options
 - Alternative 1, 2, 3, 4, 5
 - Alternative 2, 3, 5
 - Alternative 3, 5
 - Alternative 4, 5
 - Options
- WSE ID: NRHP-, CRHR-, and/or locally eligible or listed properties; and/or Contributors to a Historic District
- AIN Effective Year Built Year: Parcels within APE
- Project Improvements

0 100 200 400 Feet

**WESTSIDE SUBWAY EXTENSION
ARCHITECTURAL AND HISTORIC RESOURCES**

March 2010

Sheet 15 of 39



Legend

- Built Environment APE
- Properties Subject to Reconnaissance Survey Activities
- Contributors to Historic District

Alignment Alternatives and Options

- Alternative 1, 2, 3, 4, 5
- Alternative 2, 3, 5
- Alternative 3, 5
- Alternative 4, 5
- Options

WSE ID NRHP-, CRHR-, and/or locally eligible or listed properties; and/or Contributors to a Historic District

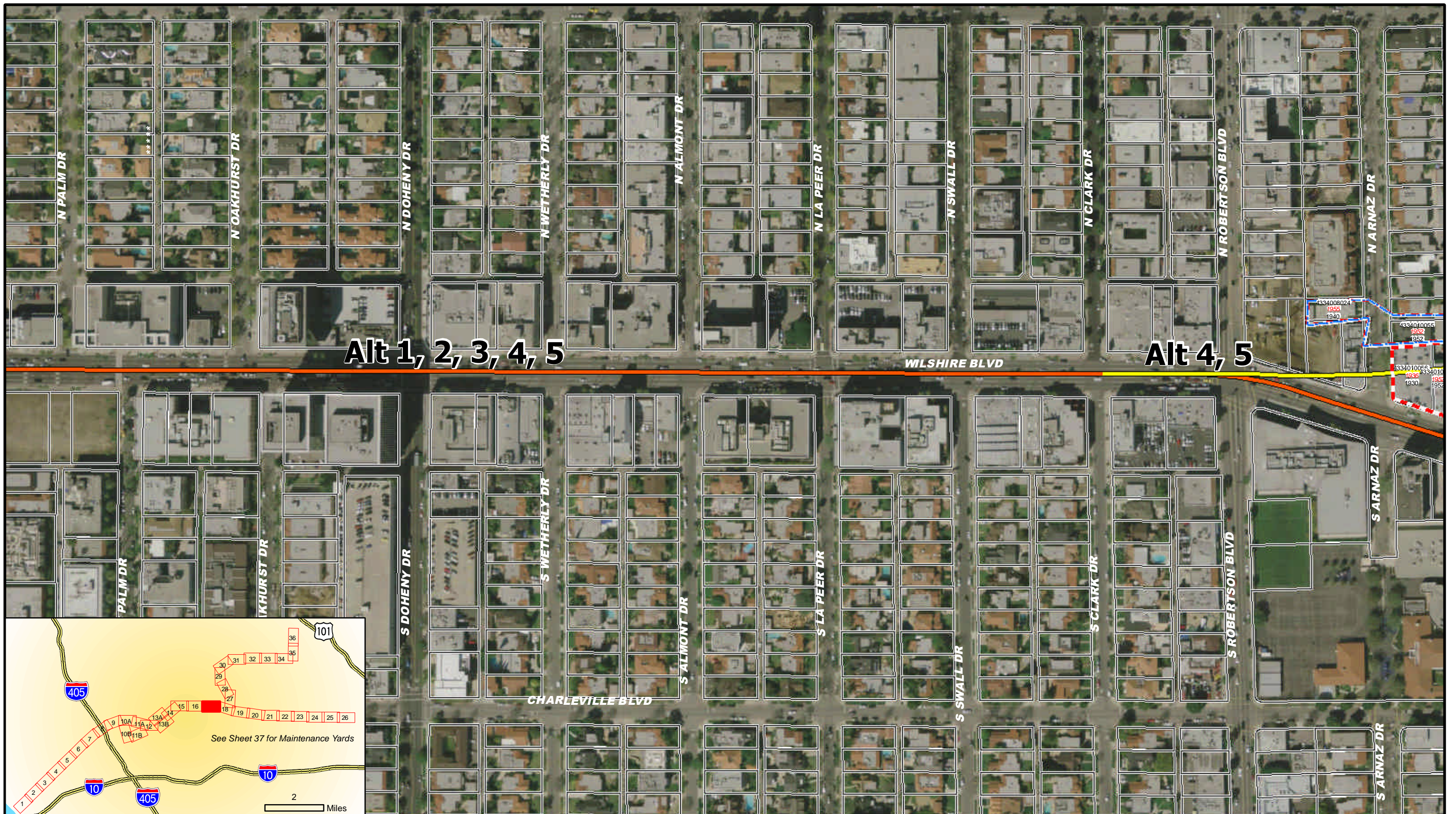
AIN Effective Year Built Year

- Parcels within APE
- Project Improvements

0 100 200 400 Feet

**WESTSIDE SUBWAY EXTENSION
ARCHITECTURAL AND HISTORIC RESOURCES**

March 2010	Sheet 16 of 39	
------------	----------------	--

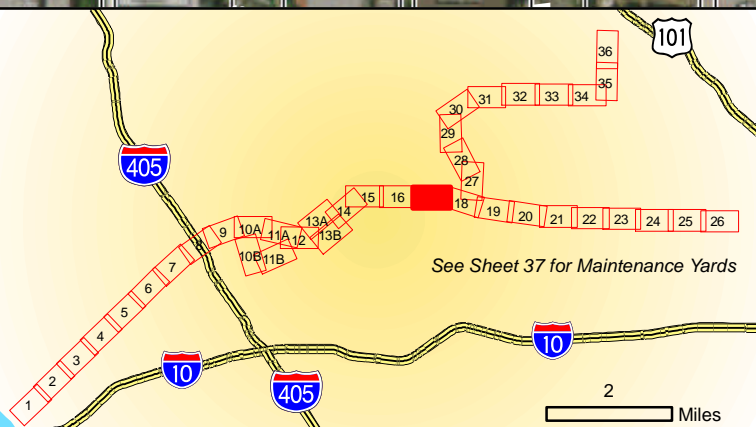


Alt 1, 2, 3, 4, 5

Alt 4, 5

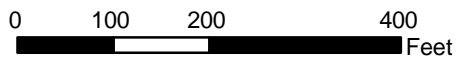
WILSHIRE BLVD

CHARLEVILLE BLVD



Legend

- Built Environment APE
- Properties Subject to Reconnaissance Survey Activities
- Contributors to Historic District
- Stations
- Alignment Alternatives and Options**
 - Alternative 1, 2, 3, 4, 5
 - Alternative 2, 3, 5
 - Alternative 3, 5
 - Alternative 4, 5
 - Options
- NRHP-, CRHR-, and/or locally eligible or listed properties; and/or Contributors to a Historic District
- Parcels within APE
- Project Improvements



**WESTSIDE SUBWAY EXTENSION
ARCHITECTURAL AND HISTORIC RESOURCES**

March 2010

Sheet 17 of 39





Legend

- Built Environment APE
- Properties Subject to Reconnaissance Survey Activities
- Contributors to Historic District

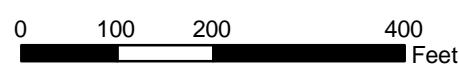
Alignment Alternatives and Options

- Alternative 1, 2, 3, 4, 5
- Alternative 2, 3, 5
- Alternative 3, 5
- Alternative 4, 5
- Options

WSE ID NRHP-, CRHR-, and/or locally eligible or listed properties; and/or Contributors to a Historic District

AIN Effective Year Parcels within APE

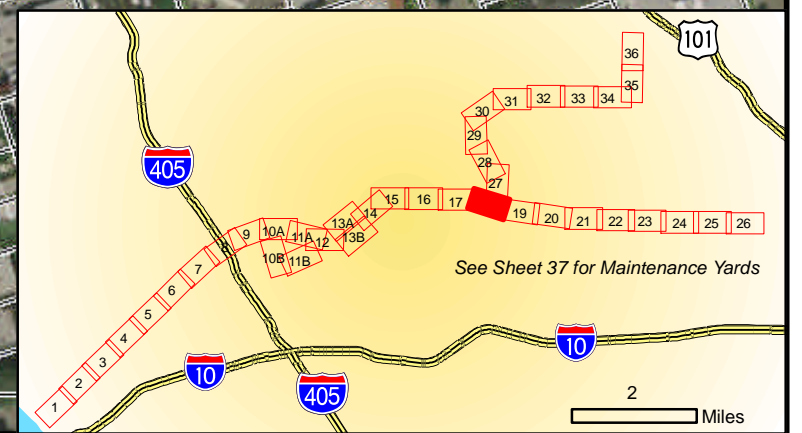
Built Year Project Improvements

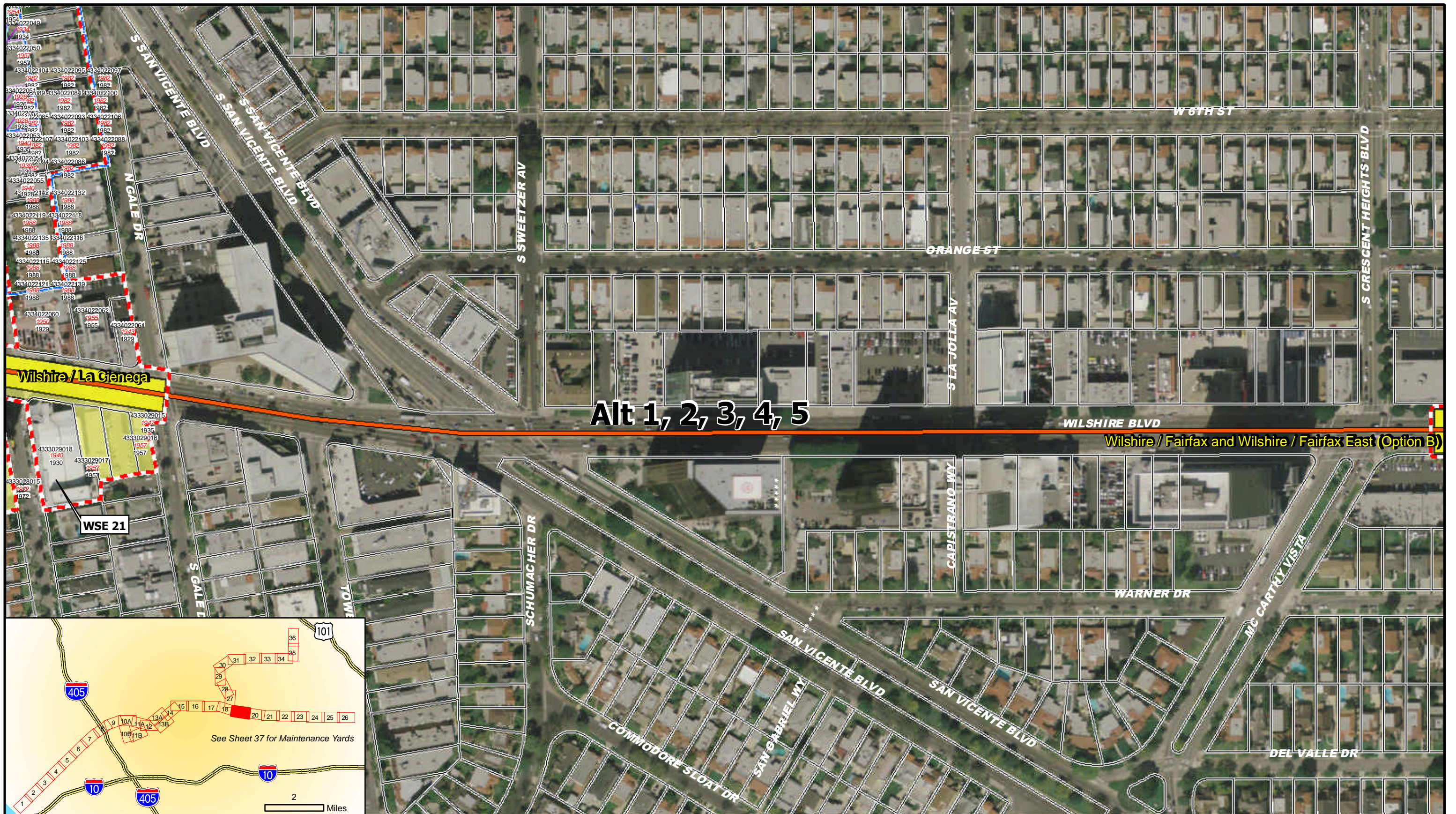


WESTSIDE SUBWAY EXTENSION ARCHITECTURAL AND HISTORIC RESOURCES

March 2010

Sheet 18 of 39

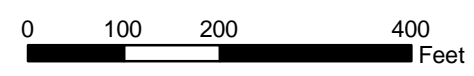




- Legend**
- Built Environment APE
 - Properties Subject to Reconnaissance Survey Activities
 - Contributors to Historic District

- Alignment Alternatives and Options**
- Stations
 - Alternative 1, 2, 3, 4, 5
 - Alternative 2, 3, 5
 - Alternative 3, 5
 - Alternative 4, 5
 - Options

- WSE ID** NRHP-, CRHR-, and/or locally eligible or listed properties; and/or Contributors to a Historic District
- AIN** Effective Year
Built Year
Parcels within APE
- Project Improvements

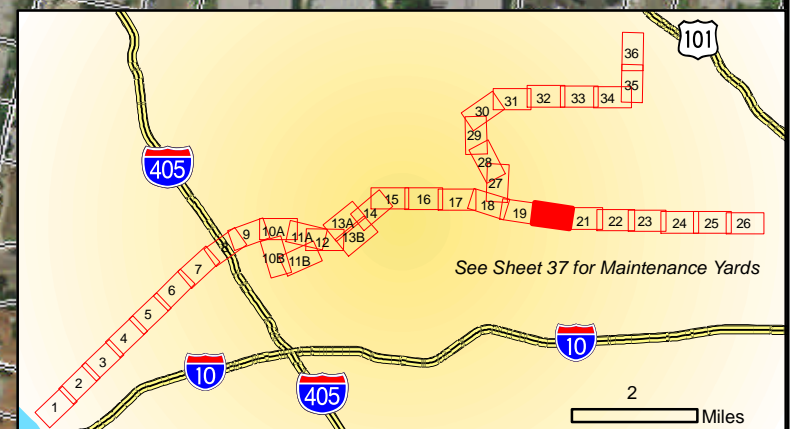


**WESTSIDE SUBWAY EXTENSION
ARCHITECTURAL AND HISTORIC RESOURCES**

March 2010

Sheet 19 of 39





Legend

- Built Environment APE
- Properties Subject to Reconnaissance Survey Activities
- Contributors to Historic District
- Stations
- Alignment Alternatives and Options**
 - Alternative 1, 2, 3, 4, 5
 - Alternative 2, 3, 5
 - Alternative 3, 5
 - Alternative 4, 5
 - Options
- WSE ID**
 - NRHP-, CRHR-, and/or locally eligible or listed properties; and/or Contributors to a Historic District
 - Parcels within APE
 - Project Improvements
- AIN**
 - Effective Year
 - Built Year

0 100 200 400 Feet

**WESTSIDE SUBWAY EXTENSION
ARCHITECTURAL AND HISTORIC RESOURCES**

March 2010

Sheet 20 of 39