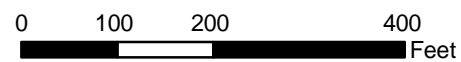


Legend

- Built Environment APE
- Properties Subject to Reconnaissance Survey Activities
- Contributors to Historic District

- Alignment Alternatives and Options**
- Stations
 - Alternative 1, 2, 3, 4, 5
 - Alternative 2, 3, 5
 - Alternative 3, 5
 - Alternative 4, 5
 - Options

- WSE ID** NRHP-, CRHR-, and/or locally eligible or listed properties; and/or Contributors to a Historic District
- AIN** Effective Year Built Year
- Parcels within APE
 - Project Improvements

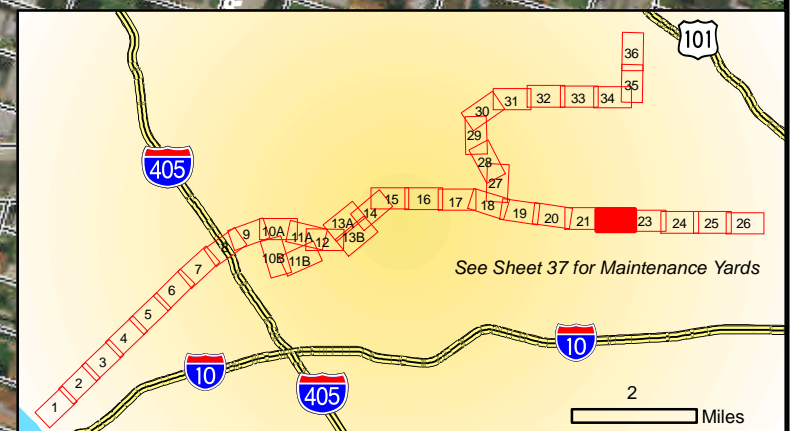
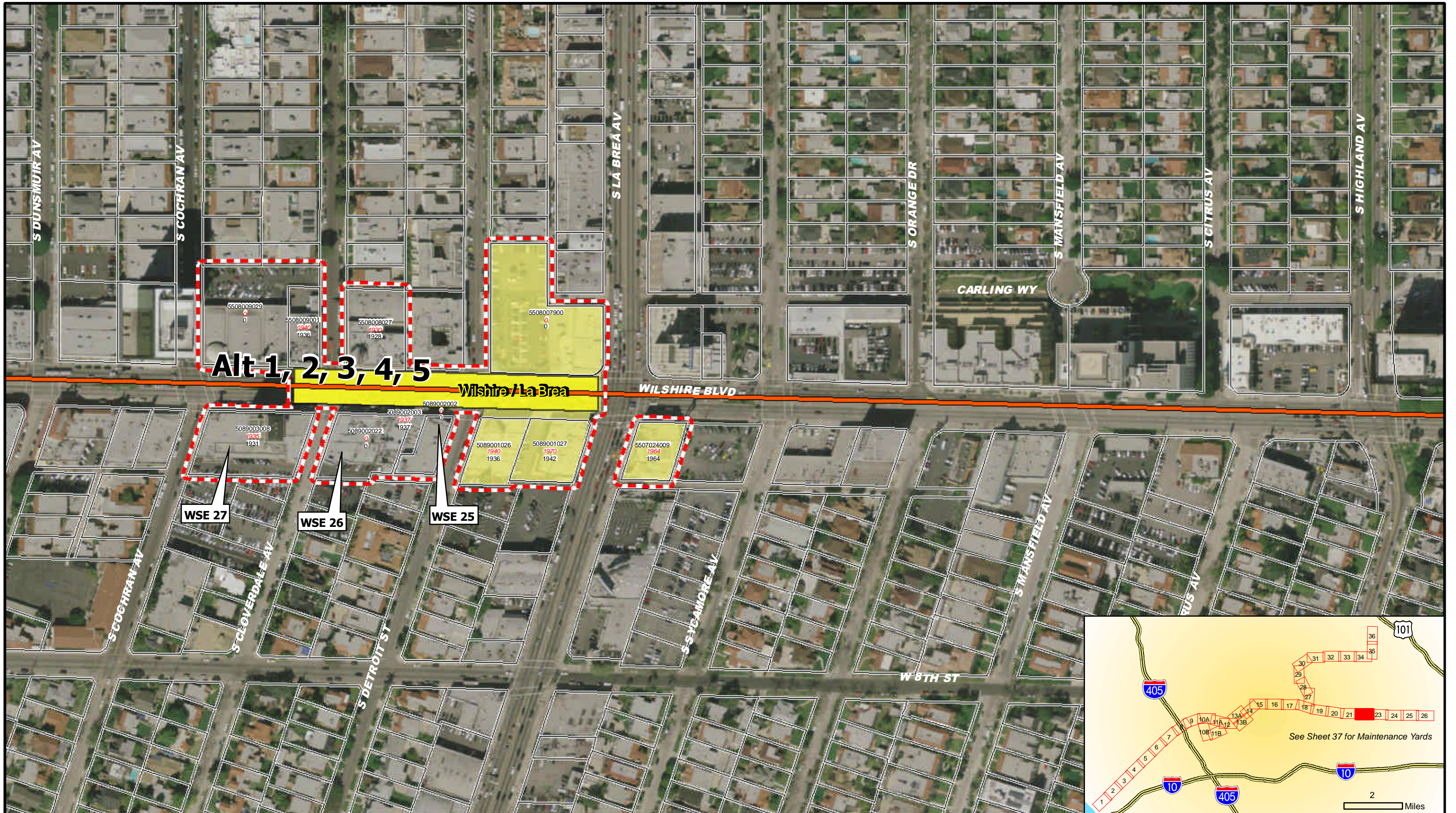


**WESTSIDE SUBWAY EXTENSION
ARCHITECTURAL AND HISTORICAL**

March 2010

Sheet 21 of 39



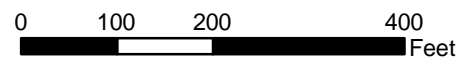


Legend

- Built Environment APE
- Properties Subject to Reconnaissance Survey Activities
- Contributors to Historic District

- Stations**
- Stations
- Alignment Alternatives and Options**
- Alternative 1, 2, 3, 4, 5
 - Alternative 2, 3, 5
 - Alternative 3, 5
 - Alternative 4, 5
 - Options

- WSE ID** NRHP-, CRHR-, and/or locally eligible or listed properties; and/or Contributors to a Historic District
- AIN** Parcels within APE
- Effective Year**
- Built Year**
- Project Improvements



**WESTSIDE SUBWAY EXTENSION
ARCHITECTURAL AND HISTORIC RESOURCES**

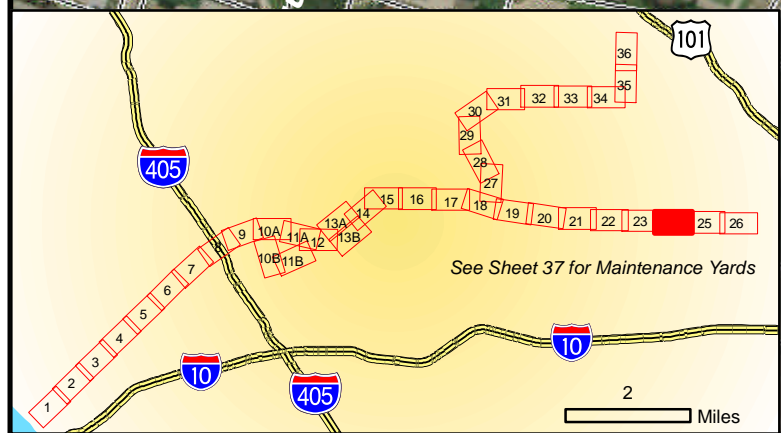
March 2010

Sheet 22 of 39












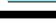




Alt 1, 2, 3, 4, 5

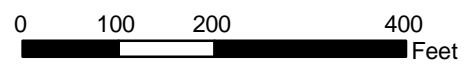


Legend Built Environment APE Properties Subject to Reconnaissance Survey Activities Contributors to Historic District		Alignment Alternatives and Options Alternative 1, 2, 3, 4, 5 Alternative 2, 3, 5 Alternative 3, 5 Alternative 4, 5 Options		WSE ID NRHP-, CRHR-, and/or locally eligible or listed properties; and/or Contributors to a Historic District Parcels within APE Project Improvements		WESTSIDE SUBWAY EXTENSION ARCHITECTURAL AND HISTORIC RESOURCES 	
				March 2010		Sheet 24 of 39	



Legend

-  Built Environment APE
-  Properties Subject to Reconnaissance Survey Activities
-  Contributors to Historic District
-  Stations
- Alignment Alternatives and Options**
 -  Alternative 1, 2, 3, 4, 5
 -  Alternative 2, 3, 5
 -  Alternative 3, 5
 -  Alternative 4, 5
 -  Options
-  **WSE ID** NRHP-, CRHR-, and/or locally eligible or listed properties; and/or Contributors to a Historic District
-  **AIN** Effective Year Built Year Parcels within APE
-  Project Improvements

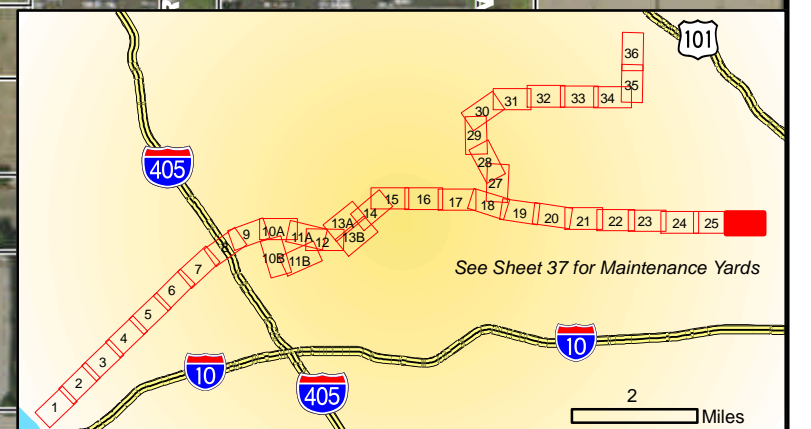
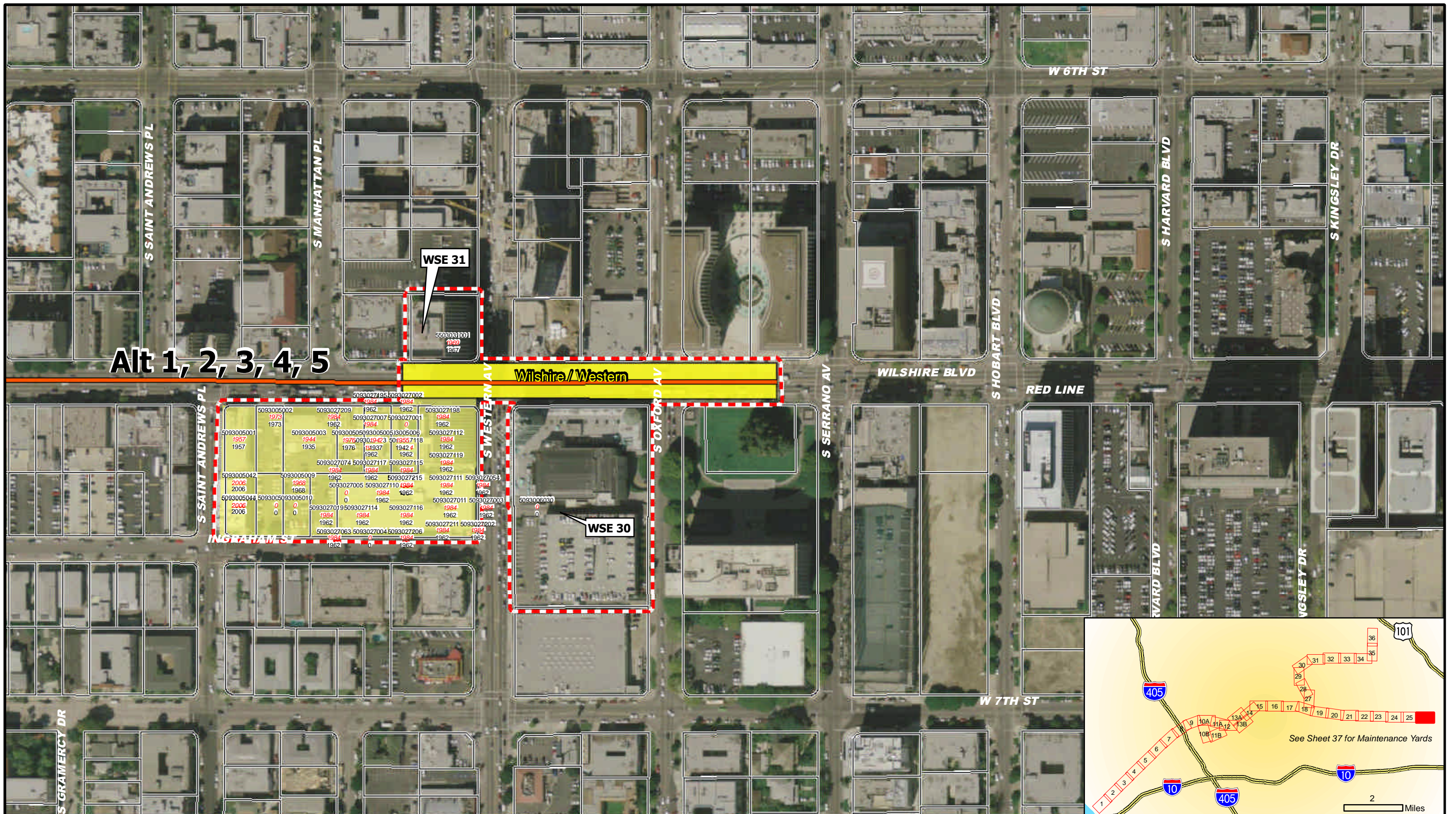


**WESTSIDE SUBWAY EXTENSION
ARCHITECTURAL AND HISTORIC RESOURCES**

March 2010

Sheet 25 of 39





Legend Built Environment APE Properties Subject to Reconnaissance Survey Activities Contributors to Historic District Stations Alignment Alternatives and Options Alternative 1, 2, 3, 4, 5 Alternative 2, 3, 5 Alternative 3, 5 Alternative 4, 5 Options	WSE ID NRHP-, CRHR-, and/or locally eligible or listed properties; and/or Contributors to a Historic District AIN Effective Year Built Year Parcels within APE Project Improvements	0 100 200 400 Feet 	WESTSIDE SUBWAY EXTENSION ARCHITECTURAL AND HISTORICAL RESOURCES		
			March 2010	Sheet 26 of 39	



WSE 57 AND 77 - 86 are potential contributors to Historic District 4

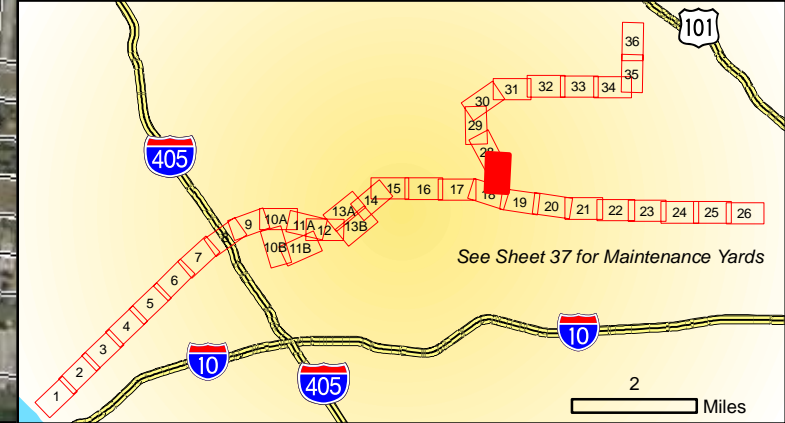
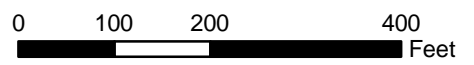
Beverly Center Area

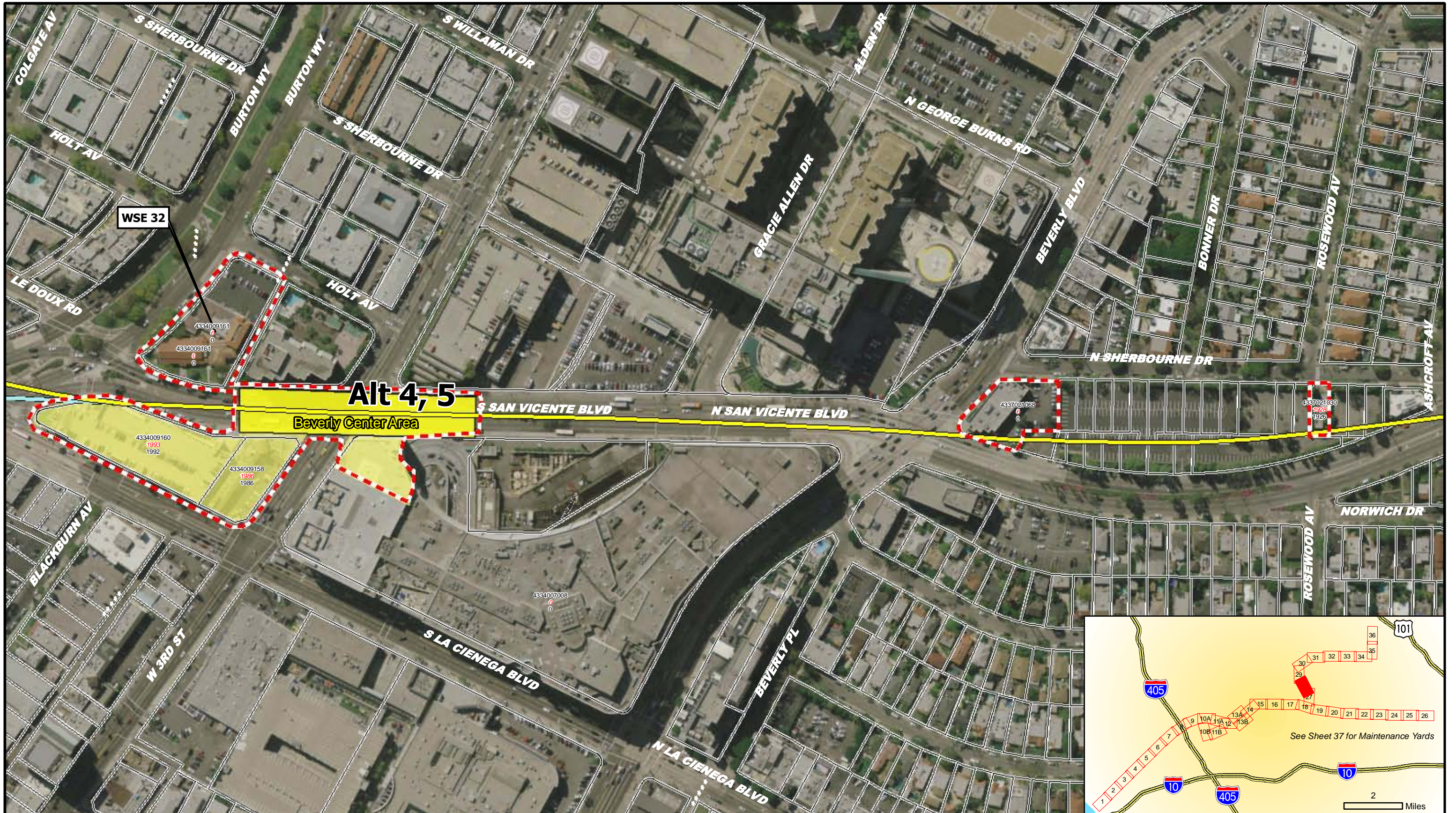
Alt 4, 5

- Legend**
- Built Environment APE
 - Properties Subject to Reconnaissance Survey Activities
 - Contributors to Historic District

- Alignment Alternatives and Options**
- Alternative 1, 2, 3, 4, 5
 - Alternative 2, 3, 5
 - Alternative 3, 5
 - Alternative 4, 5
 - Options

- WSE ID**
- NRHP-, CRHR-, and/or locally eligible or listed properties; and/or Contributors to a Historic District
 - Parcels within APE
 - Project Improvements





Legend

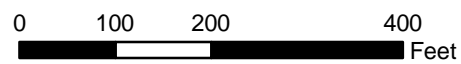
- Built Environment APE
- Properties Subject to Reconnaissance Survey Activities
- Contributors to Historic District

- Alignment Alternatives and Options**
- Stations
 - Alternative 1, 2, 3, 4, 5
 - Alternative 2, 3, 5
 - Alternative 3, 5
 - Alternative 4, 5
 - Options

WSE ID

AIN
Effective Year
Built Year

- NRHP-, CRHR-, and/or locally eligible or listed properties; and/or Contributors to a Historic District
- Parcels within APE
- Project Improvements

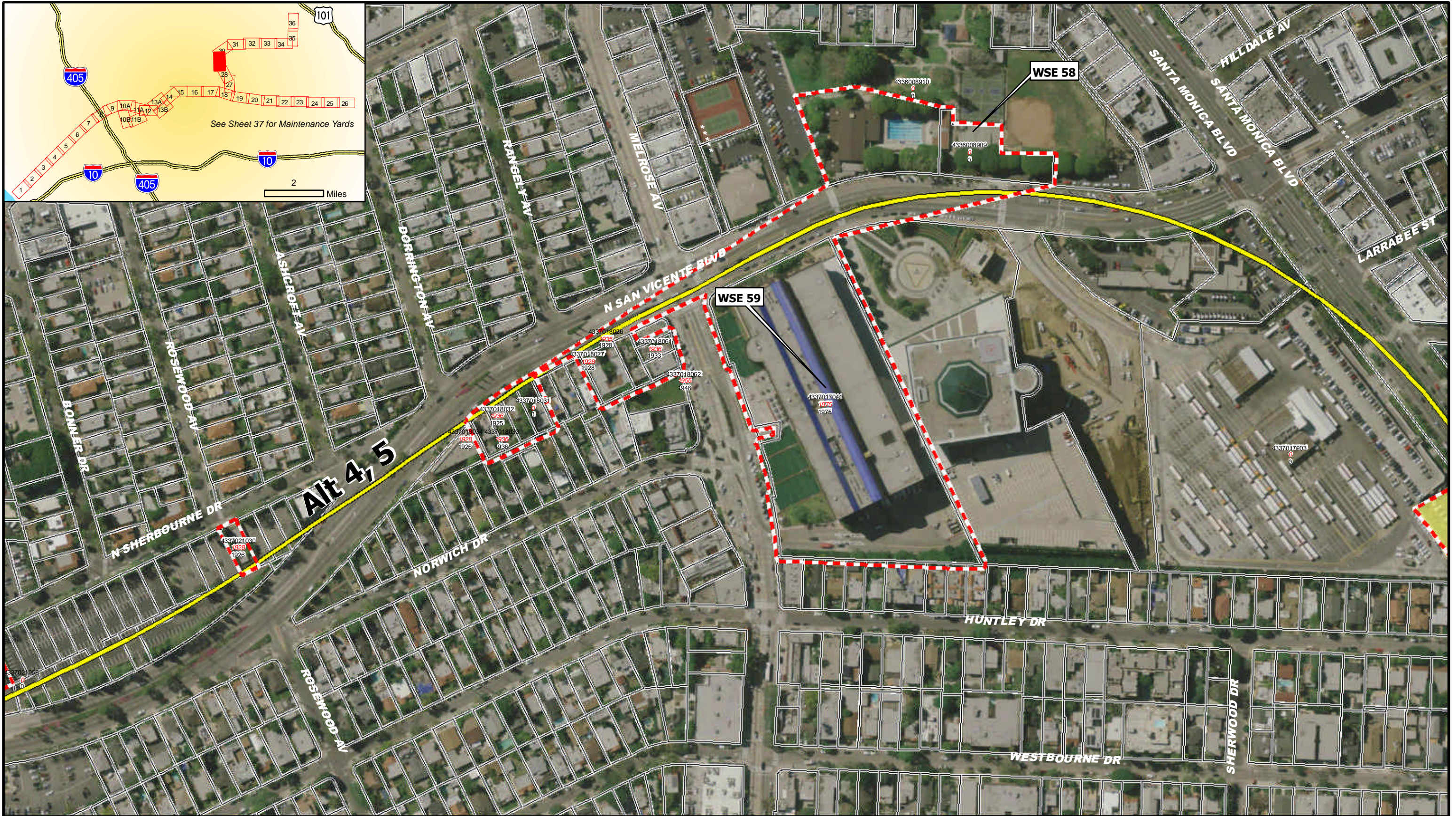
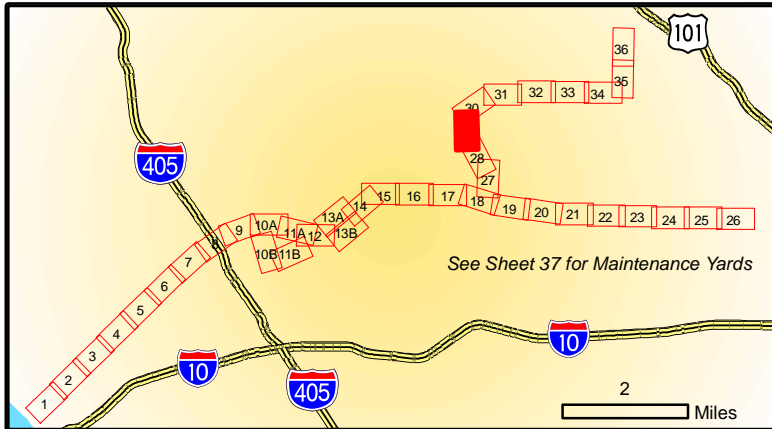


**WESTSIDE SUBWAY EXTENSION
ARCHITECTURAL AND HISTORIC RESOURCES**

March 2010

Sheet 28 of 39





- Legend**
- Built Environment APE
 - Properties Subject to Reconnaissance Survey Activities
 - Contributors to Historic District
 - Stations
 - Alignment Alternatives and Options**
 - Alternative 1, 2, 3, 4, 5
 - Alternative 2, 3, 5
 - Alternative 3, 5
 - Alternative 4, 5
 - Options
 - NRHP-, CRHR-, and/or locally eligible or listed properties; and/or Contributors to a Historic District
 - Parcels within APE
 - Project Improvements



**WESTSIDE SUBWAY EXTENSION
ARCHITECTURAL AND HISTORIC RESOURCES**

March 2010

Sheet 29 of 39

