



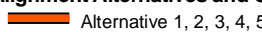
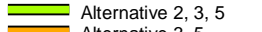
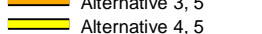
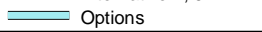


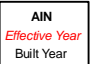


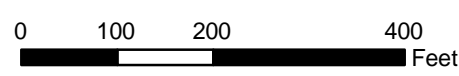


**Legend**

-  Built Environment APE
-  Properties Subject to Reconnaissance Survey Activities
-  Contributors to Historic District
-  Stations
- Alignment Alternatives and Options**
  -  Alternative 1, 2, 3, 4, 5
  -  Alternative 2, 3, 5
  -  Alternative 3, 5
  -  Alternative 4, 5
  -  Options
- WSE ID**  NRHP-, CRHR-, and/or locally eligible or listed properties; and/or Contributors to a Historic District
- AIN**  Effective Year  
Built Year
-  Parcels within APE
-  Project Improvements

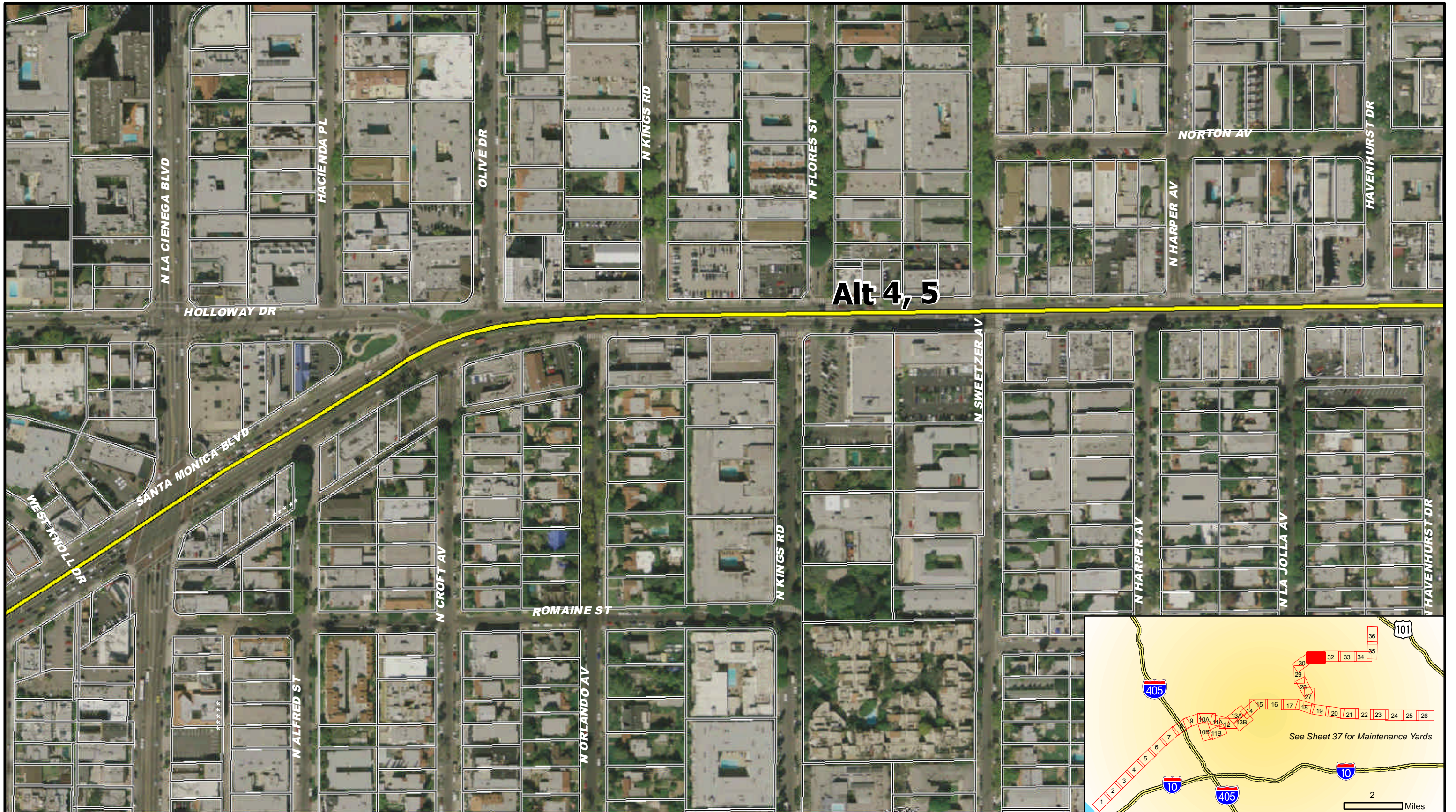


**WESTSIDE SUBWAY EXTENSION  
ARCHITECTURAL AND HISTORIC RESOURCES**

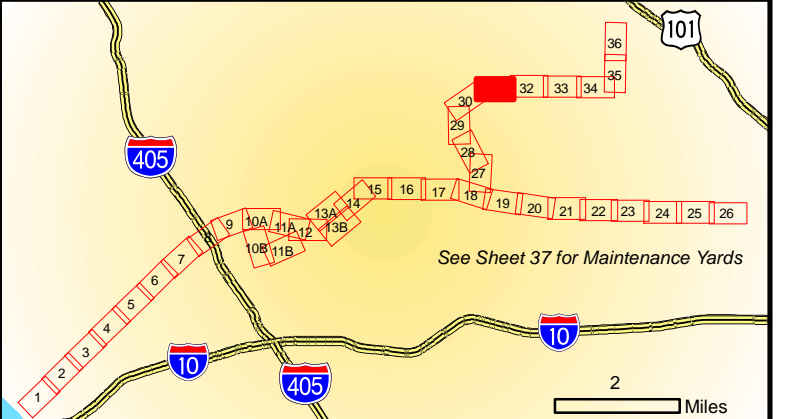
March 2010

Sheet 30 of 39





Alt 4, 5

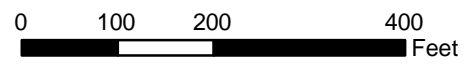


**Legend**

- Built Environment APE
- Properties Subject to Reconnaissance Survey Activities
- Contributors to Historic District

- Alignment Alternatives and Options**
- Stations
  - Alternative 1, 2, 3, 4, 5
  - Alternative 2, 3, 5
  - Alternative 3, 5
  - Alternative 4, 5
  - Options

- NRHP-, CRHR-, and/or locally eligible or listed properties; and/or Contributors to a Historic District
- Parcels within APE
- Project Improvements

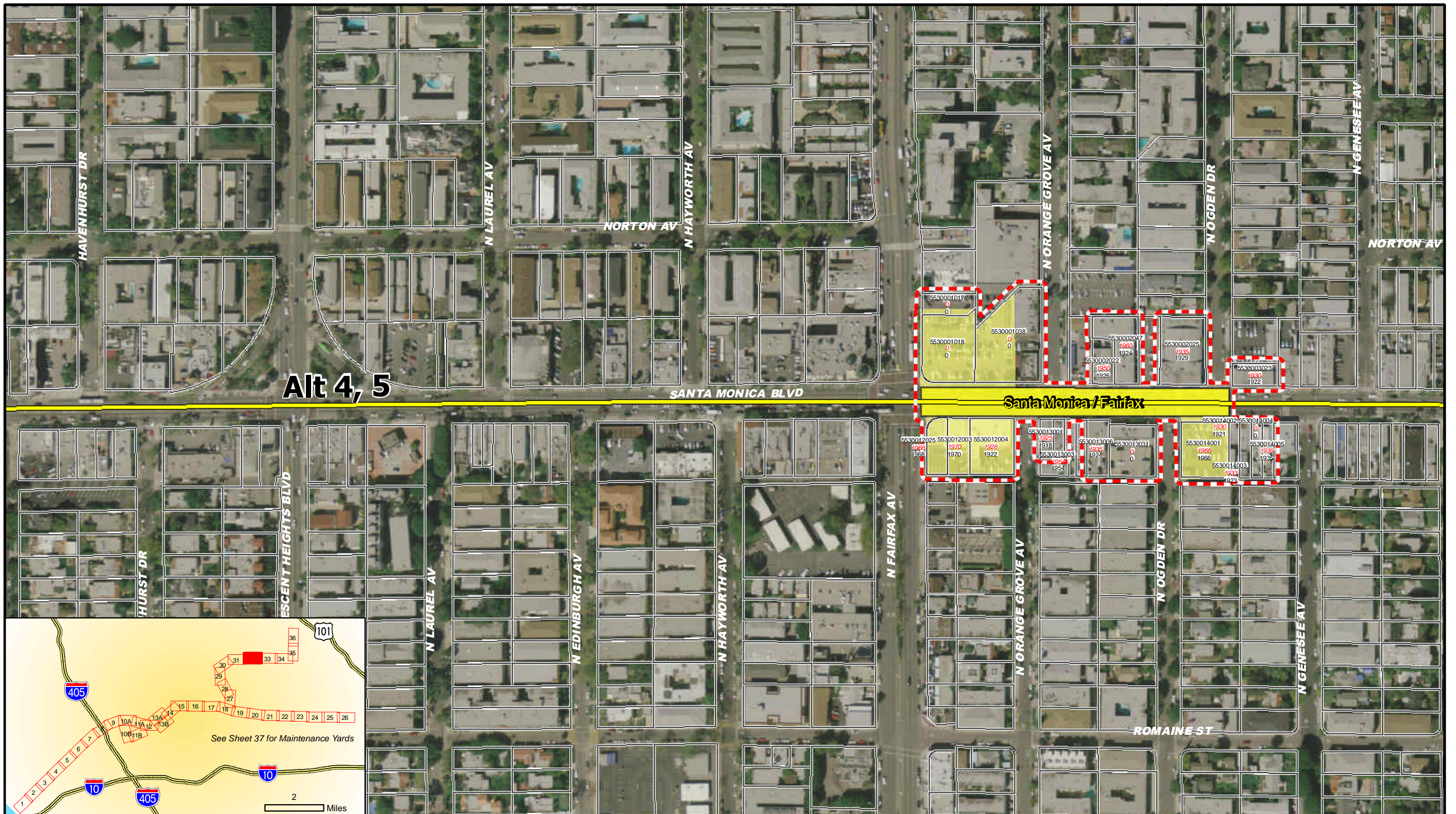


**WESTSIDE SUBWAY EXTENSION  
ARCHITECTURAL AND HISTORIC RESOURCES**

March 2010

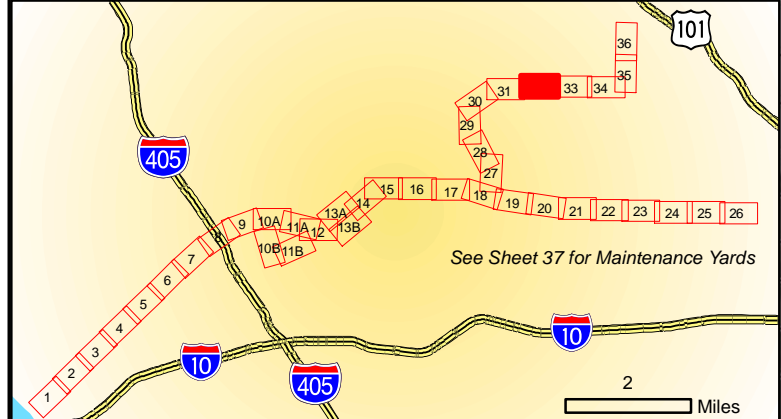
Sheet 31 of 39





**Alt 4, 5**

**Santa Monica / Fairfax**

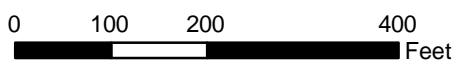


**Legend**

- Built Environment APE
- Properties Subject to Reconnaissance Survey Activities
- Contributors to Historic District

- Alignment Alternatives and Options**
- Stations
  - Alternative 1, 2, 3, 4, 5
  - Alternative 2, 3, 5
  - Alternative 3, 5
  - Alternative 4, 5
  - Options

- WSE ID** NRHP-, CRHR-, and/or locally eligible or listed properties; and/or Contributors to a Historic District
- AIN** Parcels within APE
- Effective Year** Built Year
- Project Improvements

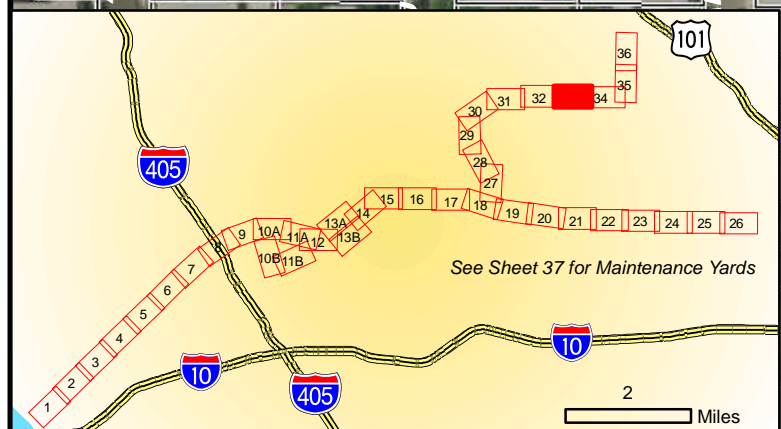
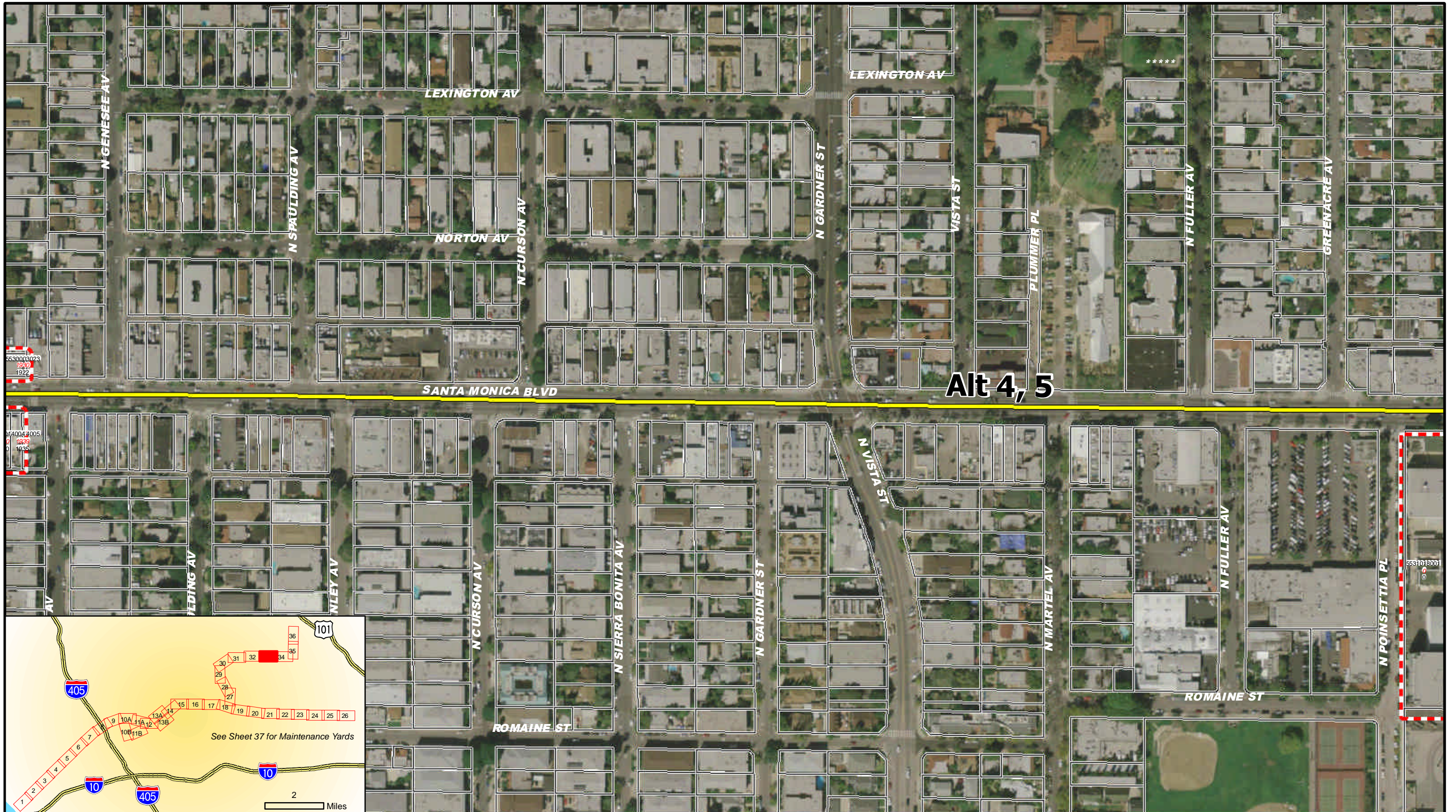


**WESTSIDE SUBWAY EXTENSION  
ARCHITECTURAL AND HISTORIC RESOURCES**

March 2010

Sheet 32 of 39



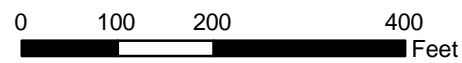


**Legend**

- Built Environment APE
- Properties Subject to Reconnaissance Survey Activities
- Contributors to Historic District

- Stations**
- Alignment Alternatives and Options**
- Alternative 1, 2, 3, 4, 5
  - Alternative 2, 3, 5
  - Alternative 3, 5
  - Alternative 4, 5
  - Options

- WSE ID** NRHP-, CRHR-, and/or locally eligible or listed properties; and/or Contributors to a Historic District
- AIN** Parcels within APE
- Project Improvements
- Effective Year  
Built Year

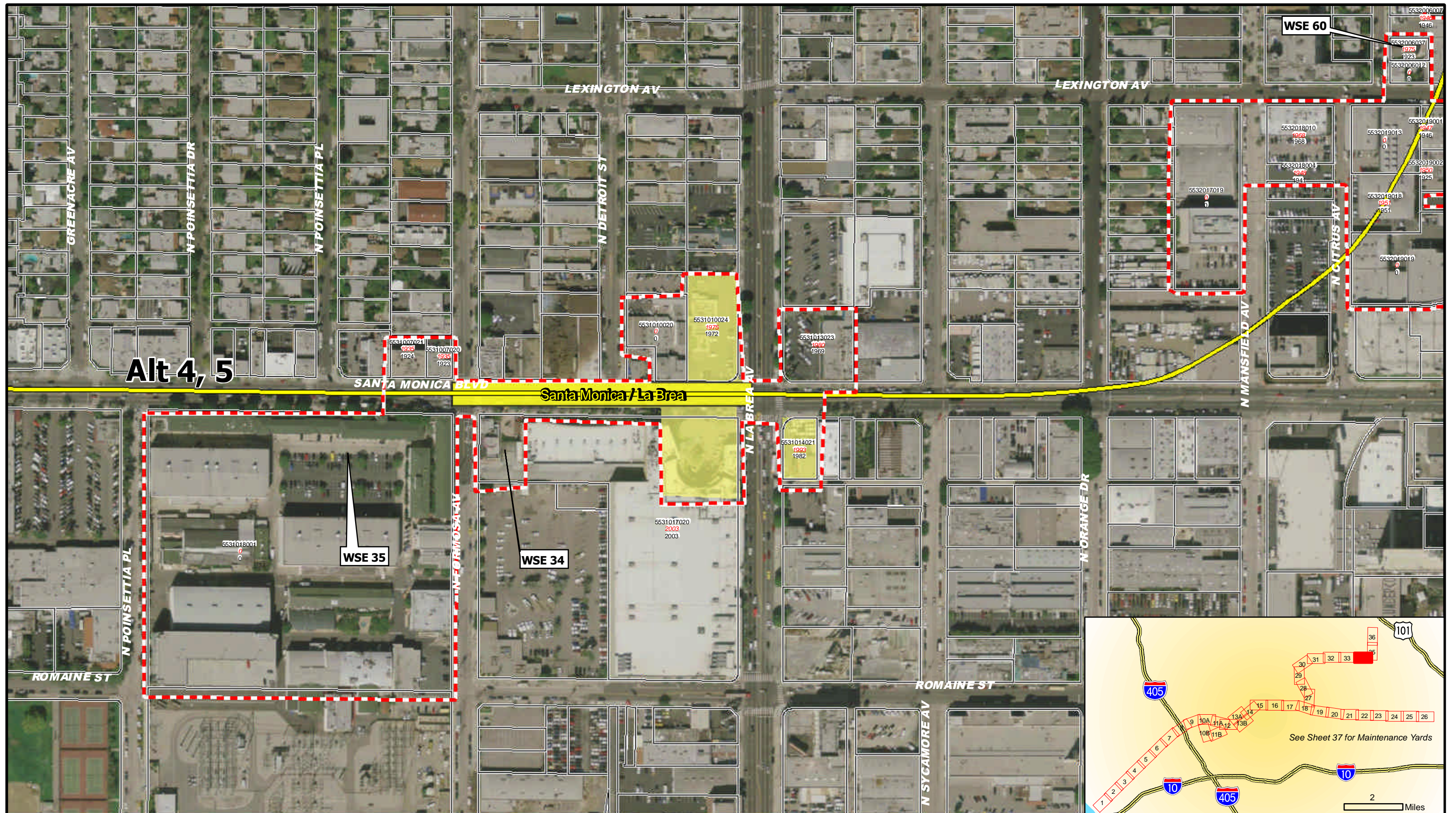


**WESTSIDE SUBWAY EXTENSION  
ARCHITECTURAL AND HISTORIC RESOURCES**

March 2010

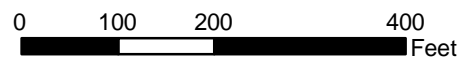
Sheet 33 of 39





**Legend**

- Built Environment APE
- Properties Subject to Reconnaissance Survey Activities
- Contributors to Historic District
- Stations
- Alignment Alternatives and Options**
  - Alternative 1, 2, 3, 4, 5
  - Alternative 2, 3, 5
  - Alternative 3, 5
  - Alternative 4, 5
  - Options
- WSE ID** NRHP-, CRHR-, and/or locally eligible or listed properties; and/or Contributors to a Historic District
- AIN** Effective Year Built Year  
 Parcels within APE  
 Project Improvements



**WESTSIDE SUBWAY EXTENSION  
ARCHITECTURAL AND HISTORIC RESOURCES**

March 2010

Sheet 34 of 39

