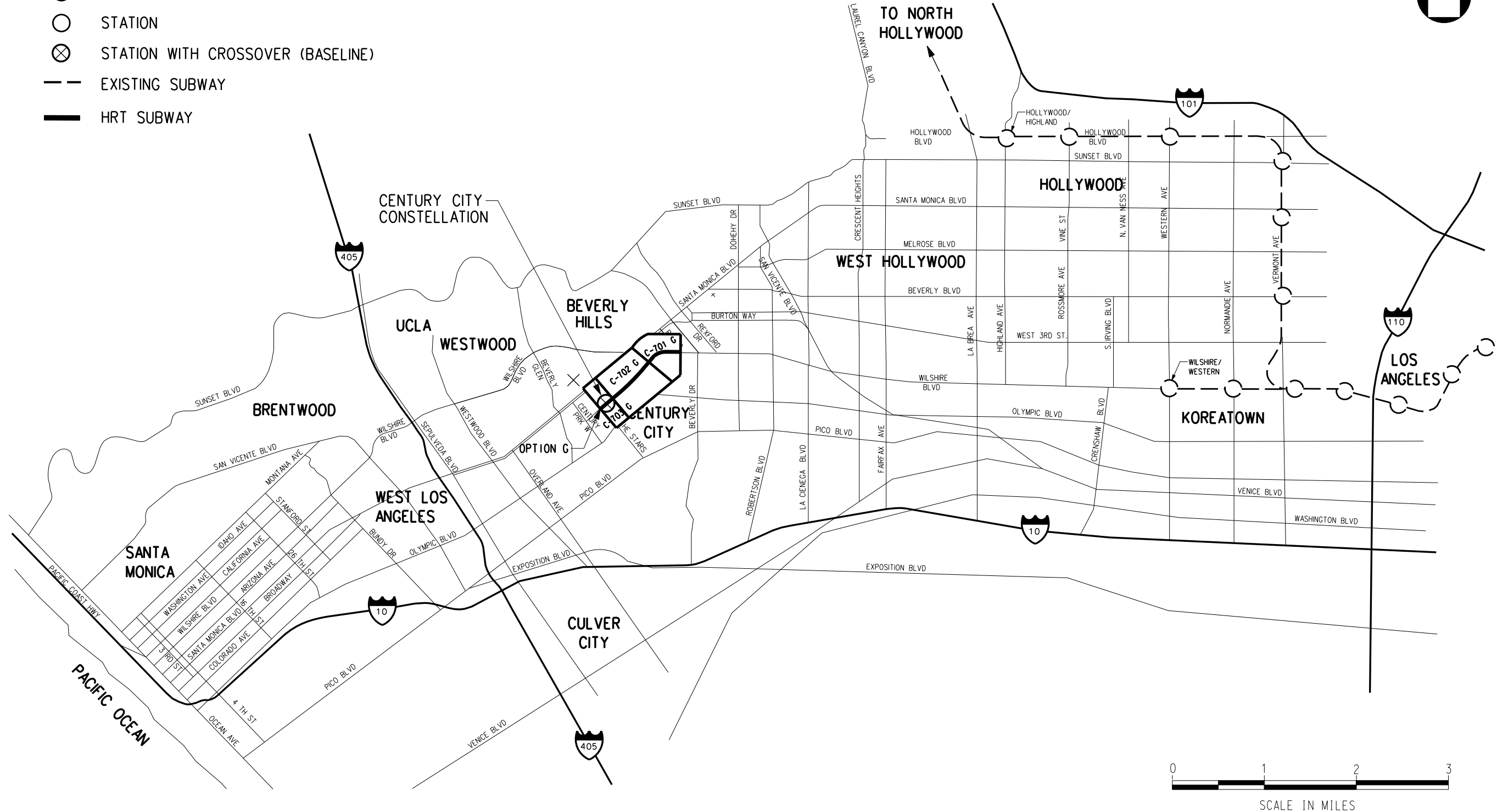


LEGEND

- EXISTING STATION
- STATION
- ⊗ STATION WITH CROSSOVER (BASELINE)
- - - EXISTING SUBWAY
- HRT SUBWAY



OPTION 4: WILSHIRE/RODEO TO CENTURY CITY CONSTELLATION VIA CONSTELLATION SOUTH - SEGMENT G

REV	DATE	BY	APP	REG NO	EXPIRES	SEAL HOLDER	DESCRIPTION

DESIGNED BY	
DRAWN BY	
CHECKED BY	
IN CHARGE	
DATE	JULY 2010



Metro

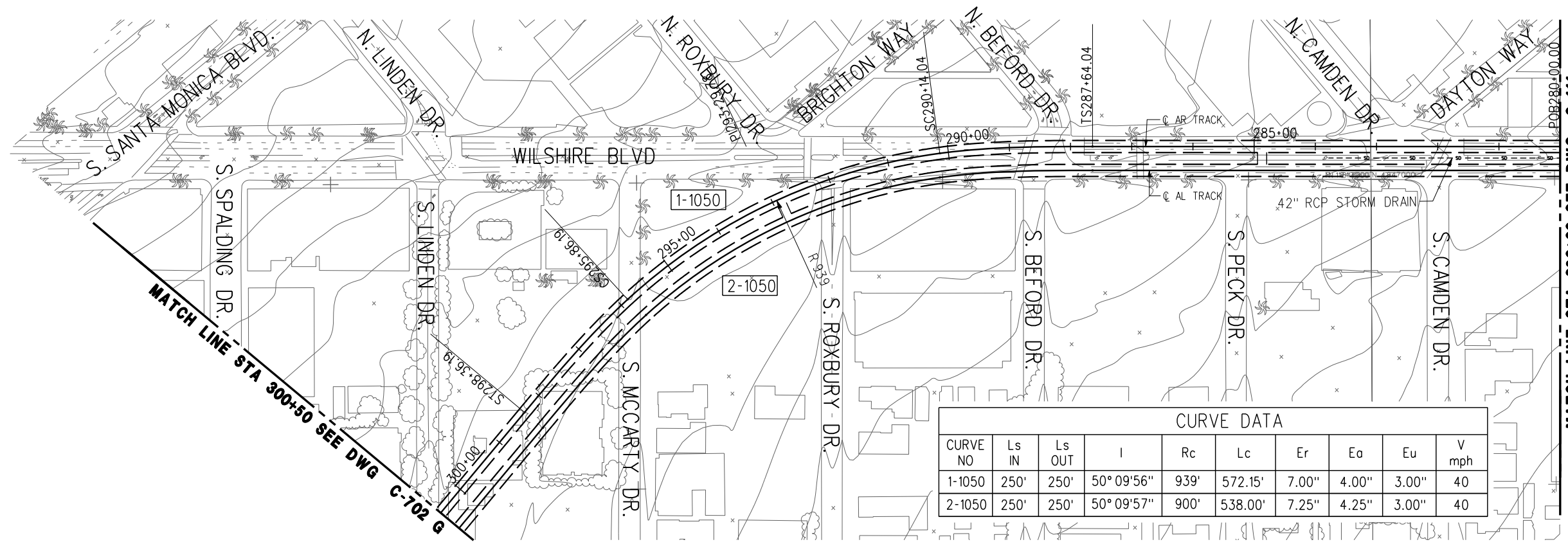
LOS ANGELES COUNTY METROPOLITAN TRANSPORTATION AUTHORITY

PROJECT MANAGER _____

WESTSIDE SUBWAY EXTENSION ADV. CONCEPTUAL ENGINEERING

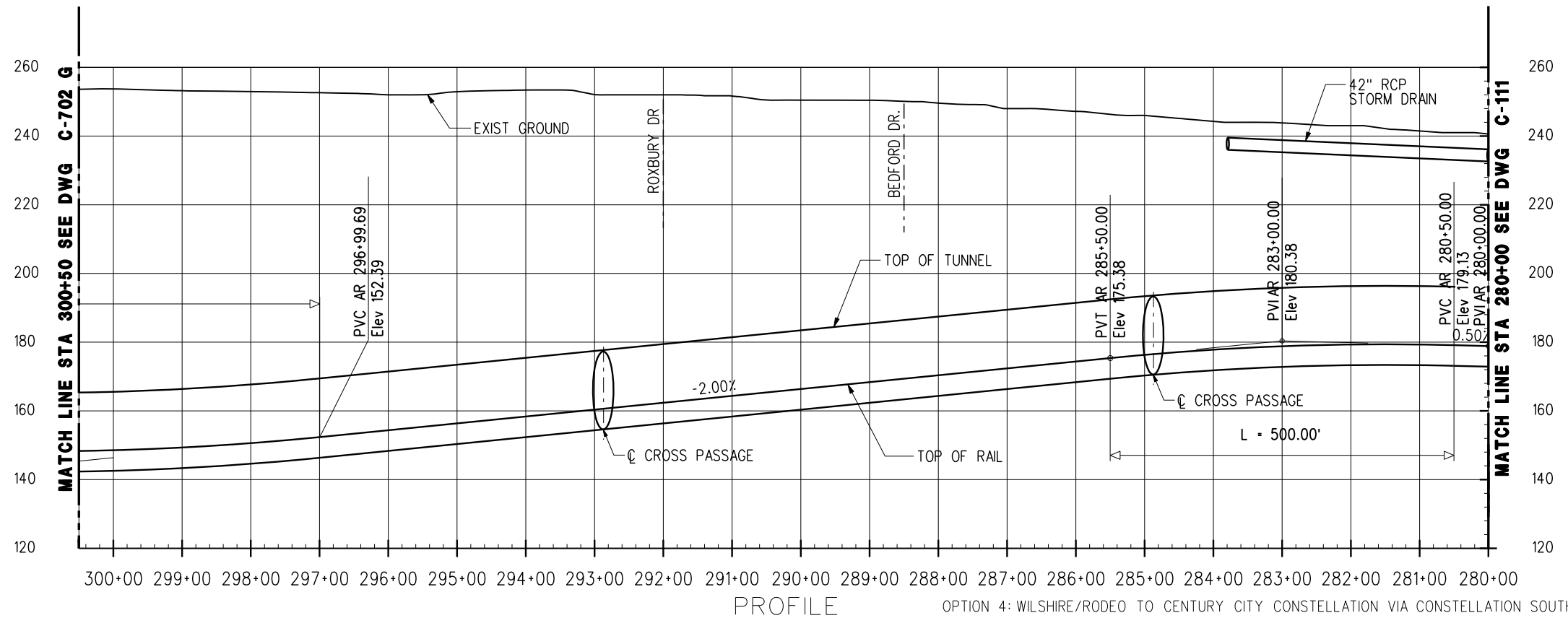
**OPTION 4
WILSHIRE/RODEO
TO CONSTELLATION**

CONTRACT NO	
DRAWING NO	C-700 G
SCALE	
SHEET NO	



CURVE DATA									
CURVE NO	Ls IN	Ls OUT	I	Rc	Lc	Er	Ea	Eu	V mph
1-1050	250'	250'	50° 09' 56"	939'	572.15'	7.00"	4.00"	3.00"	40
2-1050	250'	250'	50° 09' 57"	900'	538.00'	7.25"	4.25"	3.00"	40


PLAN



PROFILE OPTION 4: WILSHIRE/RODEO TO CENTURY CITY CONSTELLATION VIA CONSTELLATION SOUTH - SEGMENT G

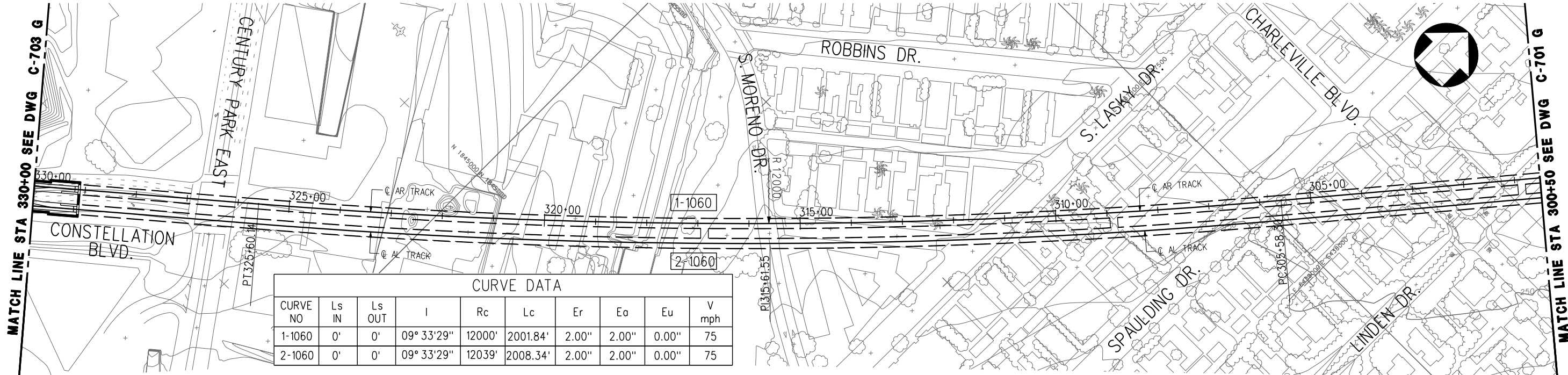
REV	DATE	BY	APP	REG NO	EXPIRES	SEAL HOLDER	DESCRIPTION

DESIGNED BY	
DRAWN BY	
CHECKED BY	
IN CHARGE	
DATE	JULY 2010


LOS ANGELES COUNTY METROPOLITAN TRANSPORTATION AUTHORITY
 Metro
 PROJECT MANAGER _____

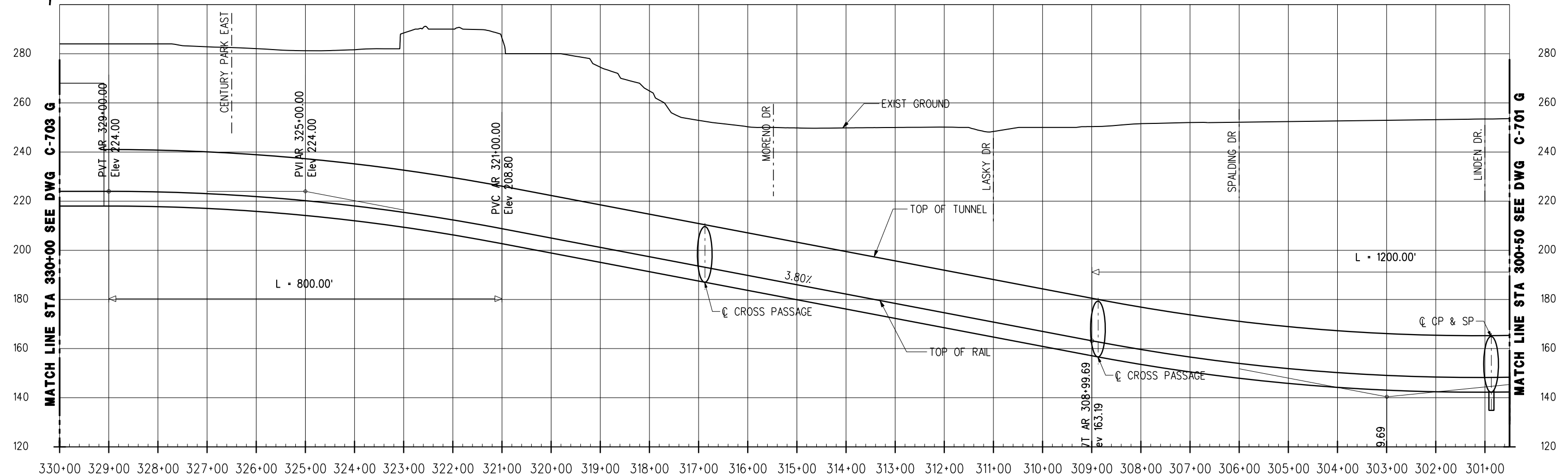
WESTSIDE SUBWAY EXTENSION
ADV. CONCEPTUAL ENGINEERING
 PLAN & PROFILE
 STATION 280+00 TO 300+50
 OPTION 4

CONTRACT NO	
DRAWING NO	REV
C-701 G	
SCALE	1" = 200'
SHEET NO	



CURVE DATA									
CURVE NO	Ls IN	Ls OUT	I	Rc	Lc	Er	Ea	Eu	V mph
1-1060	0'	0'	09° 33' 29"	12000'	2001.84'	2.00"	2.00"	0.00"	75
2-1060	0'	0'	09° 33' 29"	12039'	2008.34'	2.00"	2.00"	0.00"	75


PLAN



PROFILE

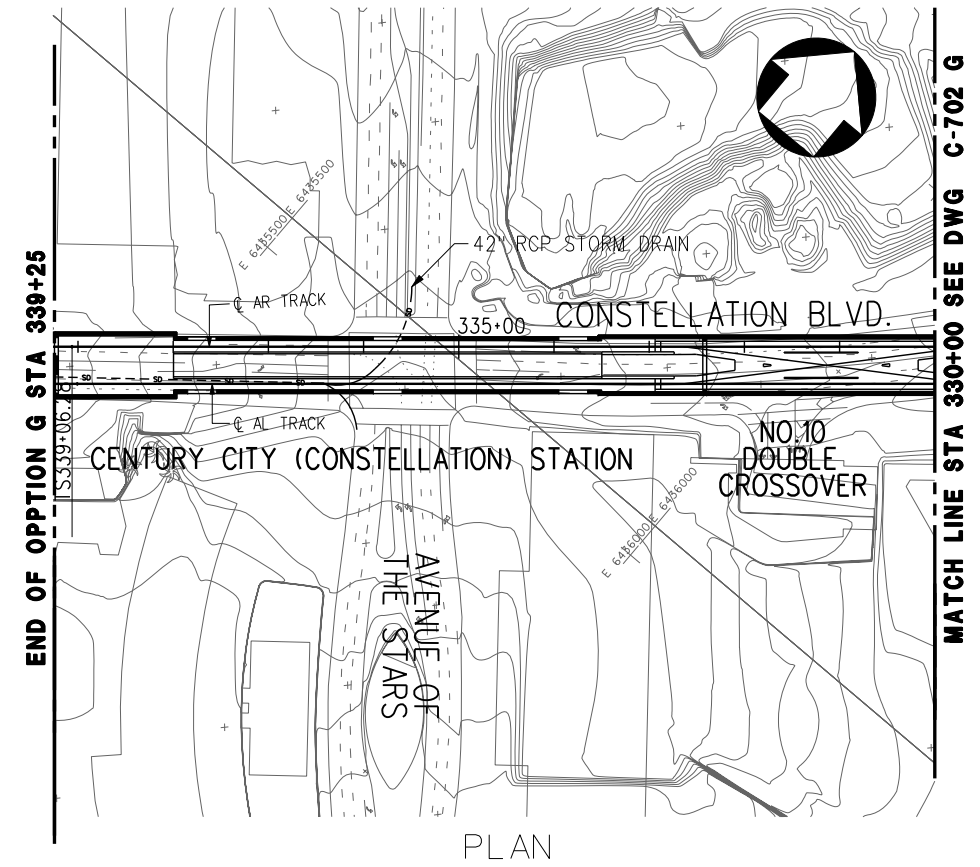
OPTION 4: WILSHIRE/RODEO TO CENTURY CITY CONSTELLATION VIA CONSTELLATION SOUTH - SEGMENT G

DESIGNED BY							
DRAWN BY							
CHECKED BY							
IN CHARGE							
DATE	JULY 2010						
REV	DATE	BY	APP	REG NO	EXPIRES	SEAL HOLDER	DESCRIPTION

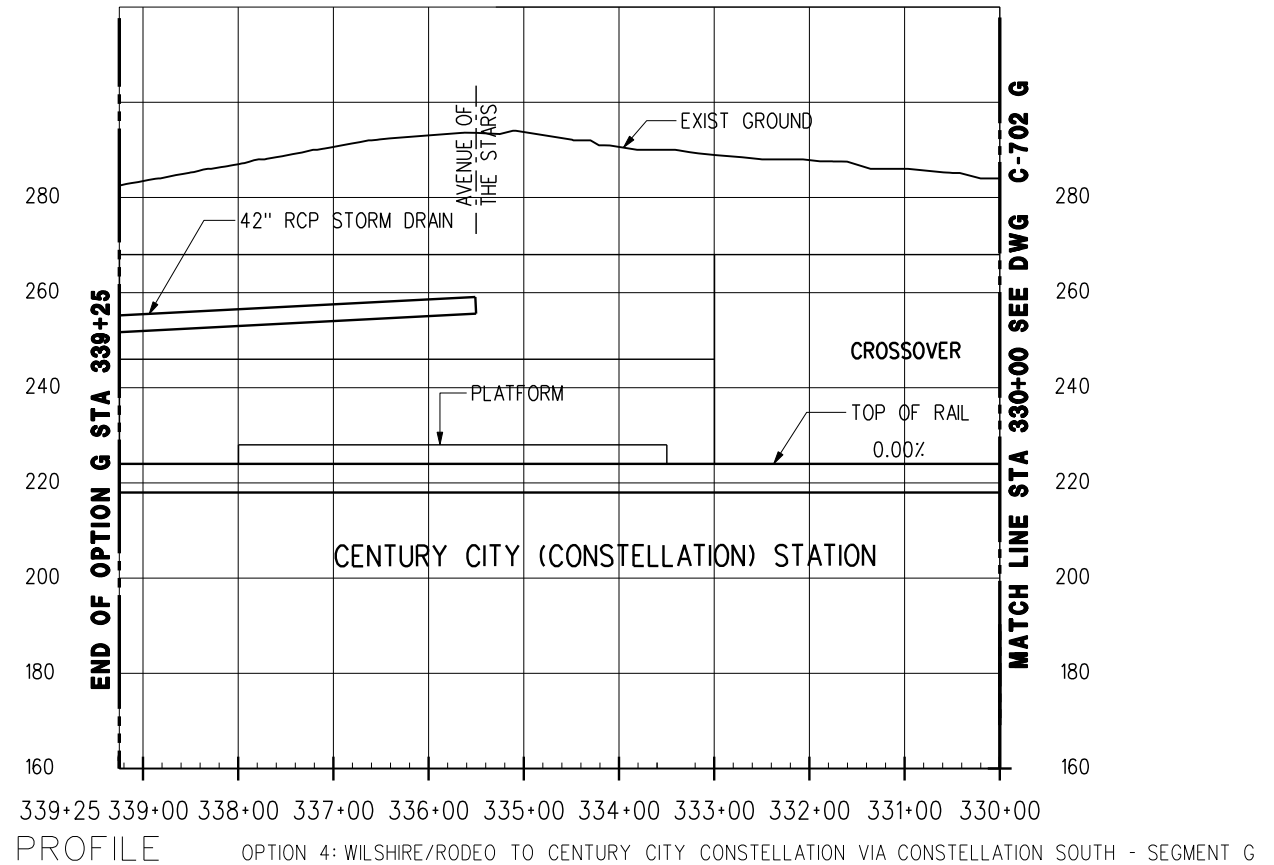

LOS ANGELES COUNTY METROPOLITAN TRANSPORTATION AUTHORITY
 Metro
 PROJECT MANAGER _____

WESTSIDE SUBWAY EXTENSION
ADV. CONCEPTUAL ENGINEERING
 PLAN & PROFILE
 STATION 300+50 TO 330+00
 OPTION 4

CONTRACT NO	
DRAWING NO	REV
C-702 G	
SCALE	
1" = 200'	
SHEET NO	



PLAN



PROFILE OPTION 4: WILSHIRE/RODEO TO CENTURY CITY CONSTELLATION VIA CONSTELLATION SOUTH - SEGMENT G

DESIGNED BY							
DRAWN BY							
CHECKED BY							
IN CHARGE							
DATE	JULY 2010						
REV	DATE	BY	APP	REG NO	EXPIRES	SEAL HOLDER	DESCRIPTION



Metro

LOS ANGELES COUNTY METROPOLITAN TRANSPORTATION AUTHORITY

PROJECT MANAGER _____

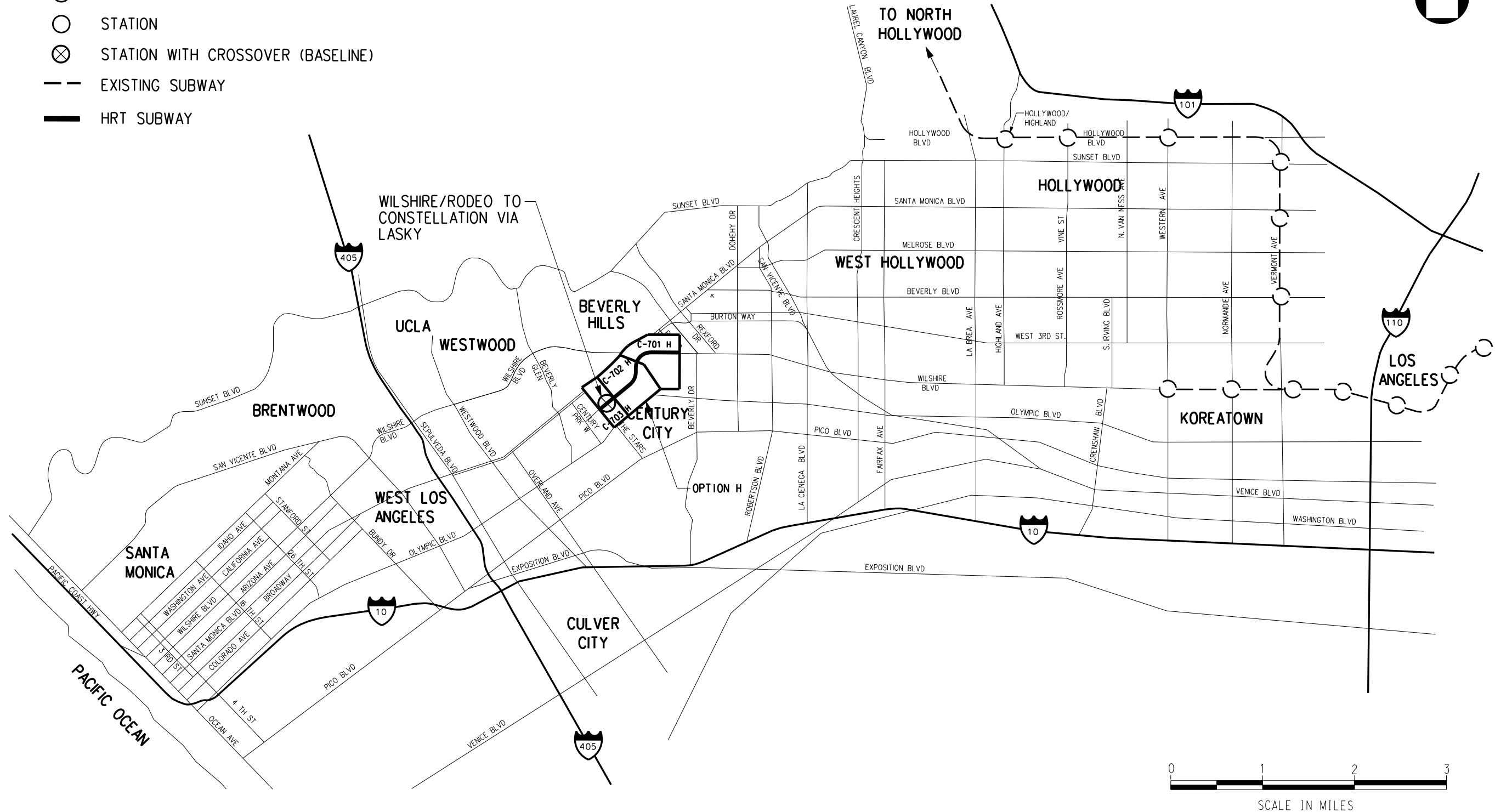
WESTSIDE SUBWAY EXTENSION ADV. CONCEPTUAL ENGINEERING

PLAN & PROFILE
STATION 330+00 TO 339+25
OPTION 4

CONTRACT NO	
DRAWING NO	REV
C-703 G	
SCALE	1" = 200'
SHEET NO	

LEGEND

- EXISTING STATION
- STATION
- ⊗ STATION WITH CROSSOVER (BASELINE)
- - - EXISTING SUBWAY
- HRT SUBWAY



OPTION 4: WILSHIRE/RODEO TO CENTURY CITY CONSTELLATION VIA CONSTELLATION NORTH - SEGMENT H

REV	DATE	BY	APP	REG NO	EXPIRES	SEAL HOLDER	DESCRIPTION

DESIGNED BY	
DRAWN BY	
CHECKED BY	
IN CHARGE	
DATE	JULY 2010



Metro

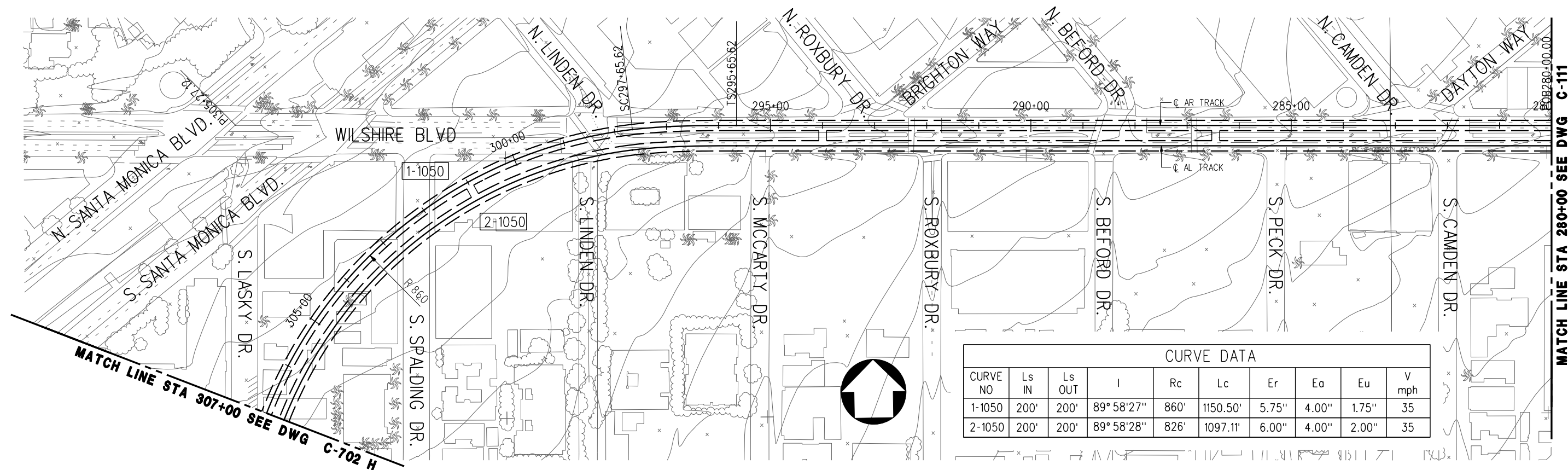
**LOS ANGELES COUNTY
METROPOLITAN TRANSPORTATION AUTHORITY**

PROJECT MANAGER _____

**WESTSIDE SUBWAY EXTENSION
ADV. CONCEPTUAL ENGINEERING**

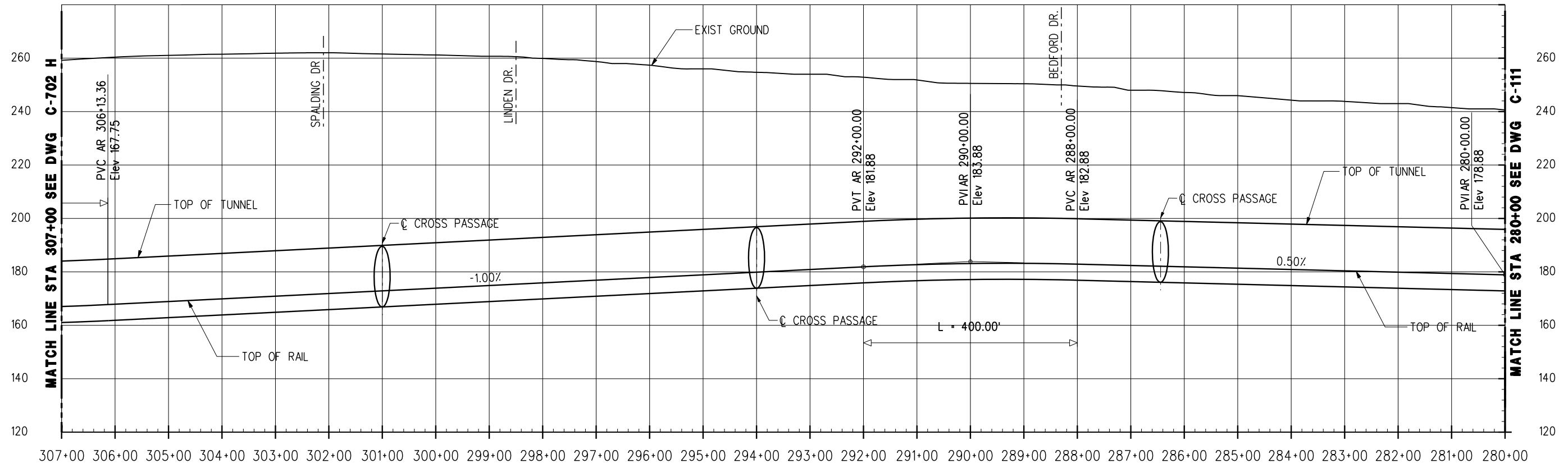
**OPTION 4
WILSHIRE/RODEO TO
CONSTELLATION VIA LASKY**

CONTRACT NO	
DRAWING NO	REV
C-700 H	
SCALE	
SHEET NO	



CURVE DATA									
CURVE NO	Ls IN	Ls OUT	I	Rc	Lc	Er	Ea	Eu	V mph
1-1050	200'	200'	89° 58' 27"	860'	1150.50'	5.75"	4.00"	1.75"	35
2-1050	200'	200'	89° 58' 28"	826'	1097.11'	6.00"	4.00"	2.00"	35

PLAN




PROFILE

OPTION 4: WILSHIRE/RODEO TO CENTURY CITY CONSTELLATION VIA CONSTELLATION NORTH - SEGMENT H

REV	DATE	BY	APP	REG NO	EXPIRES	SEAL HOLDER	DESCRIPTION

DESIGNED BY	
DRAWN BY	
CHECKED BY	
IN CHARGE	
DATE	JULY 2010



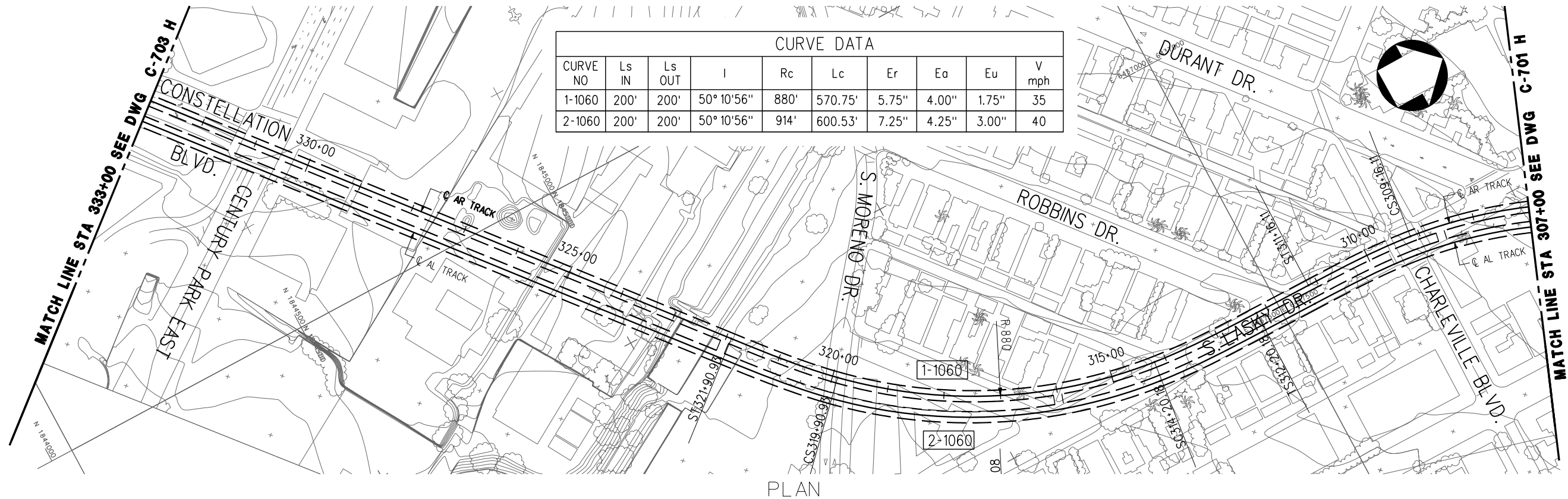
LOS ANGELES COUNTY METROPOLITAN TRANSPORTATION AUTHORITY

Metro

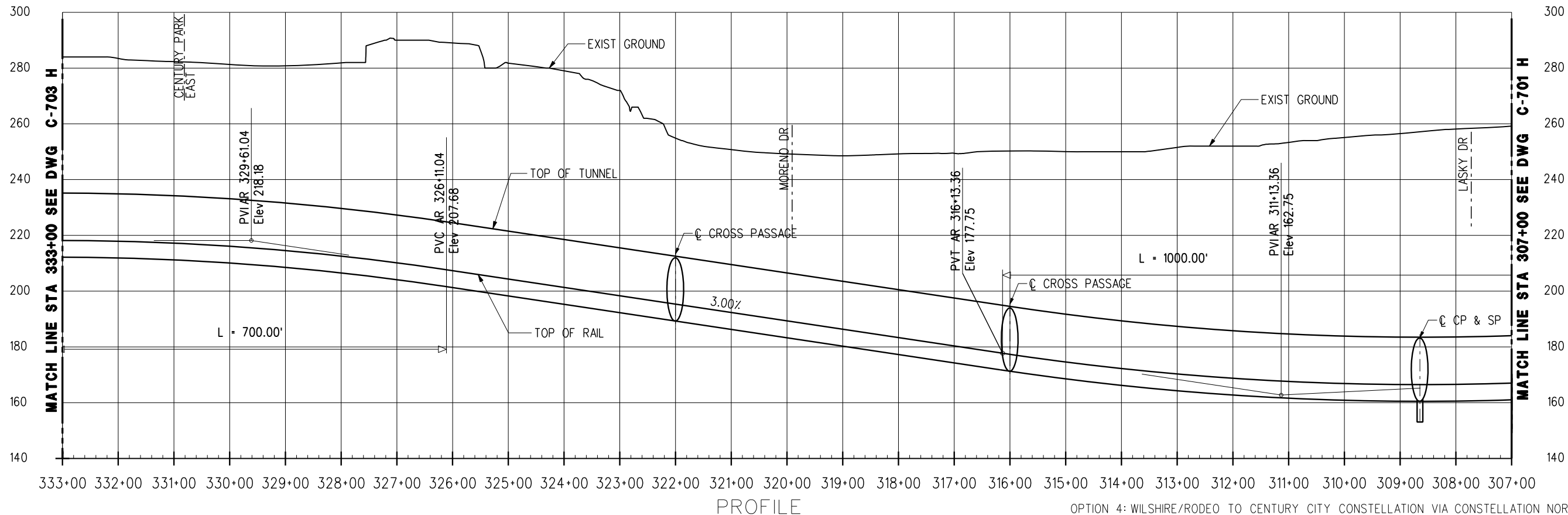
PROJECT MANAGER _____

WESTSIDE SUBWAY EXTENSION
ADV. CONCEPTUAL ENGINEERING
 PLAN & PROFILE
 STATION 280+00 TO 307+00
 OPTION 4

CONTRACT NO	
DRAWING NO	REV
C-701 H	
SCALE	
1" = 200'	
SHEET NO	



CURVE DATA									
CURVE NO	Ls IN	Ls OUT	I	Rc	Lc	Er	Ea	Eu	V mph
1-1060	200'	200'	50° 10' 56"	880'	570.75'	5.75"	4.00"	1.75"	35
2-1060	200'	200'	50° 10' 56"	914'	600.53'	7.25"	4.25"	3.00"	40



PROFILE

OPTION 4: WILSHIRE/RODEO TO CENTURY CITY CONSTELLATION VIA CONSTELLATION NORTH - SEGMENT H

REV	DATE	BY	APP	REG NO	EXPIRES	SEAL HOLDER	DESCRIPTION

DESIGNED BY	
DRAWN BY	
CHECKED BY	
IN CHARGE	
DATE	JULY 2010



Metro

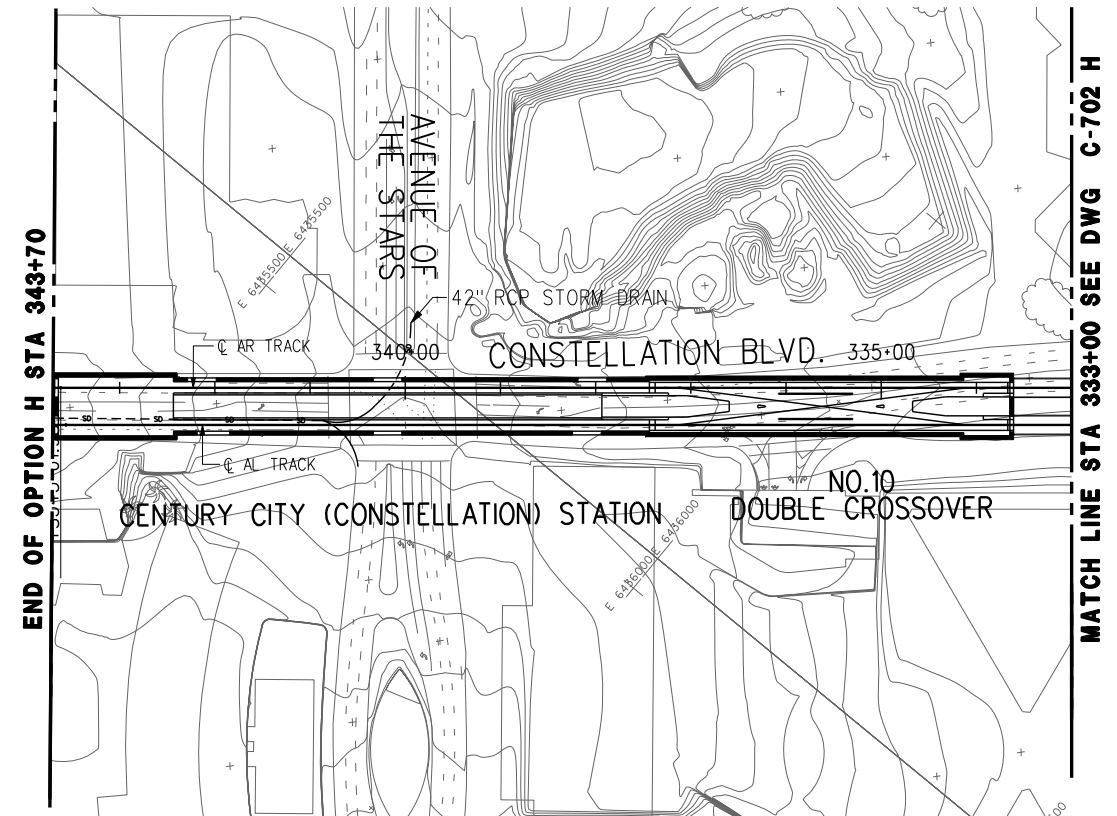
**LOS ANGELES COUNTY
METROPOLITAN TRANSPORTATION AUTHORITY**

PROJECT MANAGER _____

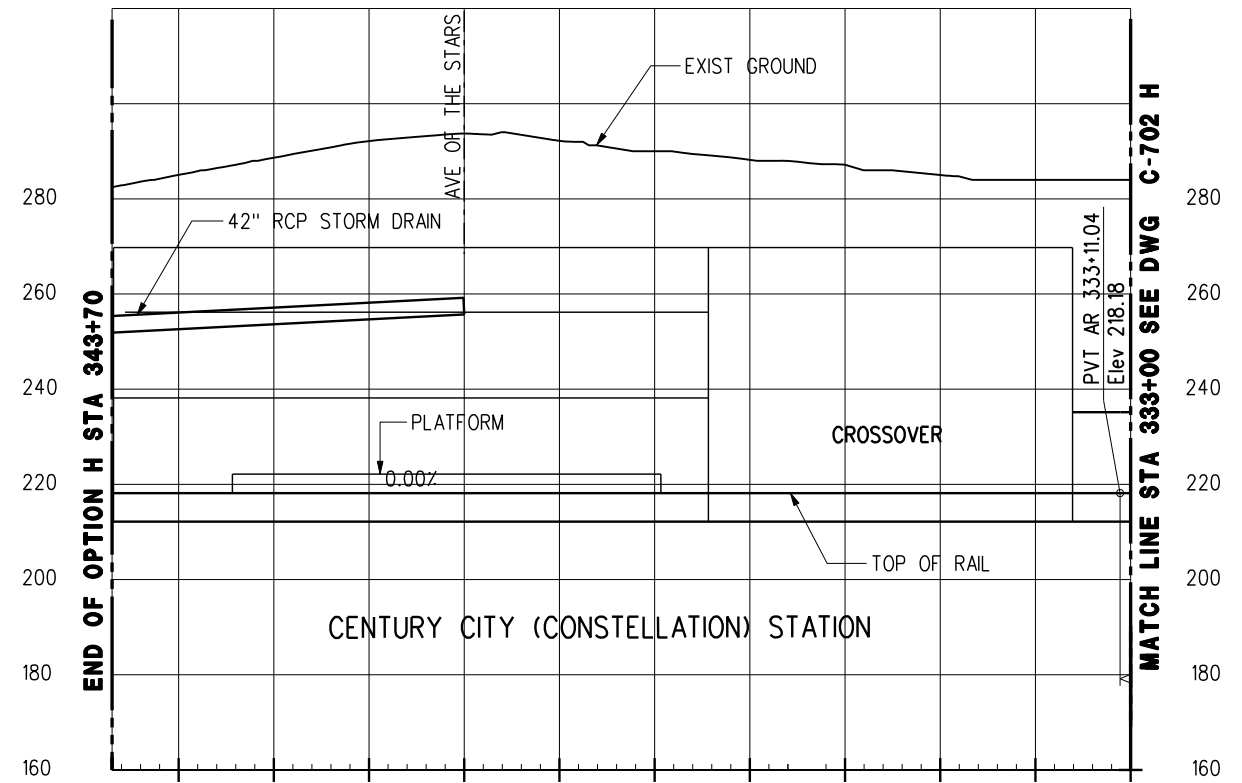
**WESTSIDE SUBWAY EXTENSION
ADV. CONCEPTUAL ENGINEERING**

PLAN & PROFILE
STATION 307+00 TO 333+00
OPTION 4

CONTRACT NO	
DRAWING NO	REV
C-702 H	
SCALE	
1" = 200'	
SHEET NO	

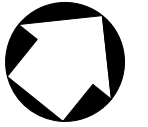


PLAN



PROFILE

OPTION 4: WILSHIRE/RODEO TO CENTURY CITY CONSTELLATION VIA CONSTELLATION NORTH - SEGMENT H



DESIGNED BY							
DRAWN BY							
CHECKED BY							
IN CHARGE							
DATE	JULY 2010						
REV	DATE	BY	APP	REG NO	EXPIRES	SEAL HOLDER	DESCRIPTION



Metro

**LOS ANGELES COUNTY
METROPOLITAN TRANSPORTATION AUTHORITY**

PROJECT MANAGER _____

**WESTSIDE SUBWAY EXTENSION
ADV. CONCEPTUAL ENGINEERING**

PLAN & PROFILE
STATION 333+00 TO 343+70
OPTION 4

CONTRACT NO	
DRAWING NO	REV
C-703 H	
SCALE	1" = 200'
SHEET NO	