

# CEO BRIEF | EVERY VOICE COUNTS

Phillip A. Washington  
Chief Executive Officer



Tuesday, January 21, 2020

## In this Issue

- **Dodger Stadium Express Operators Meet and Greet with Legendary Pitcher**
- **January 2020 Operations Employees of the Month**
- **Metro OEI Research Fellow Awarded Best Poster Presentation at TRB Conference**
- **Join us for the 5th Annual Celebrating Excellence in the Workplace Awards**
- **Procurement Postings**
- **Construction Notices**

---

### **Dodger Stadium Express Operators Meet and Greet with Legendary Pitcher**

As part of the Los Angeles Dodgers 17th annual community service week, legendary pitching sensation Fernando "El Toro" Valenzuela made a visit this morning to Metro's Division 13 near downtown Los Angeles to meet and greet bus operators, thanking them for their service and signing autographs and taking photos. I joined Metro Board Member Jacquelyn Dupont-Walker in welcoming Mr. Valenzuela and Dodgers staff to Division 13 – it was like "Fernandomania" all over again.

Metro has operated the Dodger Stadium Express Service to all home games since 2010 - this years' service will be celebrating its 10th Anniversary. We want to thank the LA Dodgers for hosting today's event to give official recognition of Metro bus operators and thanking them for delivering excellent service operating the successful Dodger Stadium Express bus service.



## January 2020 Operations Employees of the Month

Metro Operations Department recognized employees from Transportation and Maintenance at last Thursday's Operations, Safety, and Customer Experience Meeting as the department's January 2020 Employees of the Month.

The Transportation Employee of the Month award was presented to Ms. Kimberly Henderson, Rail Transit Operation Supervisor at Division 11, Long Beach. Ms. Henderson has been with Metro for 20 years, beginning her career in 2000. She is an exemplary employee who has developed a unique talent that allows her to juggle the duties of Yard Control and Mark Up, which is the heartbeat of any division. At each division the Rail Transit Operations Supervisor takes on this challenging assignment and is responsible for the safe movement of trains in the yard. On a daily basis Ms. Henderson successfully prioritizes manpower to ensure every assignment is covered and trains are successfully moved throughout the yard to allow for rail fleet services to repair and inspect the trains. When operators report to the window, Ms. Henderson never fails to assist and handles any problem that arises. Ms. Henderson brings an optimistic attitude everyday while she demonstrates a strong knowledge of the task ahead of her and is a valued source to all.

The Maintenance Employee of the Month award was presented to Ms. Erin Hagadorn, Production Planner at Central Maintenance Shops. Ms. Hagadorn has been with Metro for 6 years, beginning her career as an Entry-Level Trainee Program participant where she worked two years before becoming permanent in 2016. She is a valuable employee who plans and schedules the shop production activities for the Midlife, Barrier, Re-Tank, and Paint programs in support of over 120 mechanics, body repairers, painters and service attendants. She works closely with the Sr. Managers, supervisors and frontline staff to ensure they are receiving all the necessary parts required for completion of bus rebuild programs. Ms. Hagadorn's work is very technical and requires a strong commitment and high degree of diligence to keep Central Maintenance Shops production activities moving smoothly. She strives to make sure the

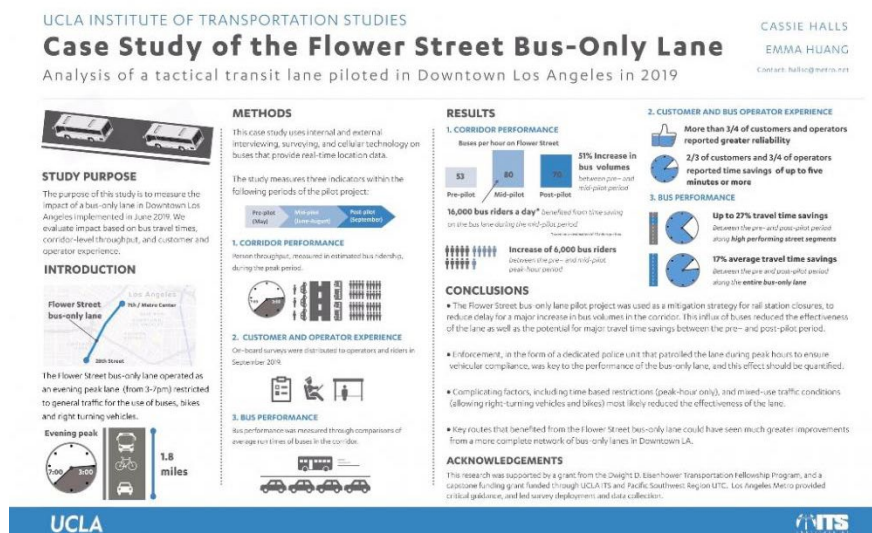
buses in the rebuild programs are completed as scheduled and released to the divisions to ensure daily rollouts are accomplished and our customers have the level of bus service that meets their expectations.



## Metro OEI Research Fellow Awarded Best Poster Presentation at TRB Conference

Office of Extraordinary Innovation (OEI) Research Fellow and UCLA Master of Urban and Regional Planning student Cassie Halls was awarded the Dwight David Eisenhower "Best Poster Presentation" for the 2020 Transportation Research Showcase at the Transportation Research Board (TRB) Conference in Washington D.C. The poster illustrates findings from a case study conducted by Cassie Halls and Emma Huang from Metro's OEI on the Flower Street Bus-Only Lane piloted in downtown Los Angeles. The study measured the impact of the tactical transit lane based on bus travel times, corridor-level throughput, and customer and operator experience.

The analysis found up to 27% travel time savings between the pre- and post-pilot period along high performing street segments, and 17% average travel time savings along the entire bus-only lane. Upwards of 16,000 bus riders a day benefitted from time savings on the bus lane during the mid-pilot period. A full case study will be published later this year. The Dwight David Eisenhower Transportation Fellowship Program attracts the nation's brightest minds to the transportation field and serves as a catalyst for research, training, technology transfer, and enhancement of the abilities of professionals in industry and academia. To view the award winning poster, click [here](#).







## Procurement Postings

### Regional Integration of Intelligent Transportation Systems (RIITS) Strategic Plan (RFP) - Small Business Prime

Metro will release a Request for Proposals (RFP) to solicit expertise to identify needs and opportunities, evaluate future strategic initiatives, and provide valuable insights into how RIITS can be leveraged to meet the region's multimodal mobility, goods movement, sustainability, and emergency transportation goals. This solicitation is open to Metro Certified Small Businesses only. The procurement process blackout period is expected to run from Friday, January 24, 2020 through Monday June 1, 2020.

Metro will seek proposals from well-qualified professional and technical firms for development of a strategic plan which will guide RIITS for the next five years with a recommended program for Southern California.

Any inquiries concerning this procurement action during the blackout period must be directed to and may only be answered by Leisa Oden-Kurz, Principal Contract Administrator, at (213) 922-2790.

### Airport Metro Connector (RFQ and IFB)

Metro released a Request for Qualifications/Request for Proposals (RFQ) on October 7, 2019. The Airport Metro Connector Project will provide a station connection to a future automated People Mover (APM) to be built and operated by Los Angeles World Airports (LAWA). In June 2014, the Metro Board of Directors approved adding a station at Aviation Blvd/96th Street to the Crenshaw/LAX Line (currently under construction) that will serve as a transit "Gateway" to LAX.

Metro is using a RFQ and IFB process to select a Contractor for the design-bid-build delivery of the Project. The RFQ sought Statement of Qualifications (SOQs) that Metro received to its Request for Qualifications (RFQ) on November 18, 2019. The firms meeting the minimum requirements as a result of the RFQ are:

- Clark Construction Group
- Dragados USA, Inc.
- Hensel Phelps Construction Company
- OHL NA – Suffolk Joint Venture
- Skanska USA Civil West California District Inc.
- Tutor Perini Corporation

The SOQ is only an initial evaluation of qualifications that does not consider the same criteria and factors set forth in the IFB.

As a reminder, the procurement black-out period continues on this solicitation. Any inquiries concerning this procurement during the black-out period must be directed to and may only be answered by Deneise Glover, Principal Contract Administrator at (213) 922-5450 or at [gloverd@metro.net](mailto:gloverd@metro.net).

#### Sepulveda Transit Corridor Community Participation Program (RFP)

Metro will release a Request for Proposals (RFP) for the community participation program for the Sepulveda Transit Corridor. The procurement process blackout period is expected to run from Friday, January 24, 2020 through Friday, July 3, 2020.

Metro is seeking the services of an experienced and qualified Contractor to develop a community participation program tailored to the general public and be responsible for strategic planning and logistical support for all public outreach activities. The Contractor will support Metro in developing and implementing a community engagement program for the project's environmental review process, inclusive of the Pre-Development Agreement process, leading to the selection of the Locally Preferred Alternative (LPA) by the Metro Board of Directors.

Any inquiries concerning this procurement action during the blackout period must be directed to and may only be answered by Ana Rodriguez, Contract Administration Manager, at (213) 922-1076.

---

### **Construction Notices: Regional Connector, Orange Line, I-5**

#### Regional Connector: Street Restoration closures at 1st/Alameda in DTLA

Street restoration at the 1st St and Alameda St intersection is now scheduled to start January 10, 2020. Plan ahead as lane reductions and road closures will be in place through the summer, as this work will be completed in two stages, each lasting approximately four months.

This effort marks the transition into the final phase of construction for the Regional Connector and brings it one step closer to testing and revenue operation. To learn more, click [here](#).

#### Purple Line Extension: Orange Grove Closure at Wilshire Blvd

Orange Grove Ave. south of Wilshire Blvd. and north of 8th St. will be closed for 8 months starting Friday, October 18. The existing sound walls will be extended west to surround the closure area, which is required to construct the Wilshire/Fairfax Station. Residents of Orange Grove Ave. will continue to have access.

Caltrans Interstate 5: All Construction Updates [here](#).

---

"Only when it is dark enough can you see the stars."

~ Martin Luther King, Jr.



You have subscribed to receive Metro information, [manage subscriptions](#), or [unsubscribe](#).

Your privacy is important to us, please review the [Privacy Policy](#).

View this email [online](#).

© 2019 Metro, 1 Gateway Plaza, Los Angeles, CA 90012, United States

**Bus & Rail Transit information**

323.GO.METRO (323.466.3876)

6:30am - 7pm (Monday - Friday)

8:00am - 4:30pm (Saturday/Sunday)