



Tuesday, May 26, 2020

In this Issue

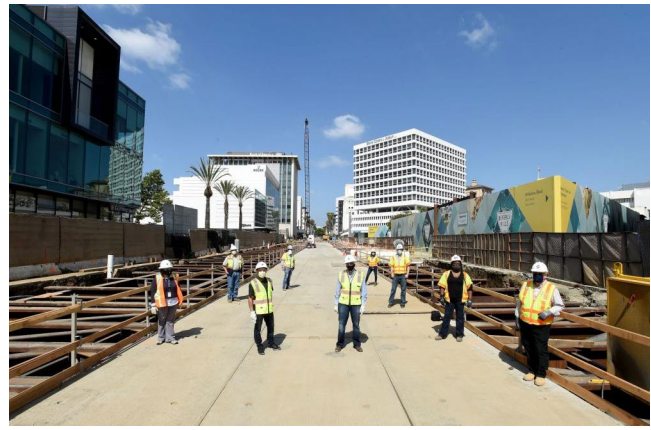
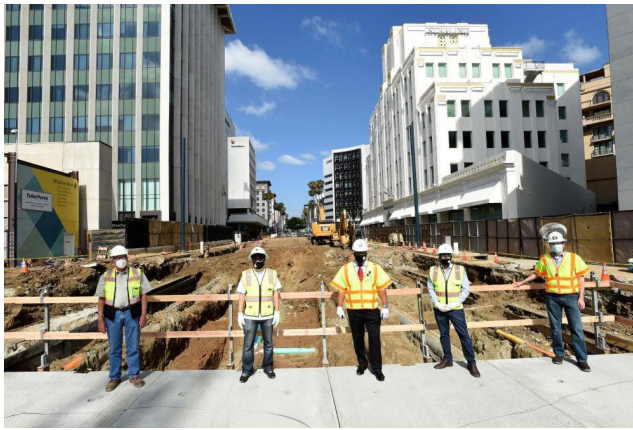
- **Chair Butts and Beverly Hills Elected Officials Tour Wilshire Rodeo Station**
- **May 2020 Operations Employees of the Month**
- **LA County Goods Movement Strategic Plan**
- **Metro's Second Tunnel Boring Machine Reaches Wilshire/Fairfax Station Site**
- **Procurement Postings**
- **Construction Notices**

Chair Butts and Beverly Hills Elected Officials Tour Wilshire Rodeo Station

On Saturday, May 23, Metro Board Chair and City of Inglewood Mayor James Butts accompanied Beverly Hills Mayor Lester Friedman and Beverly Hills Councilmembers to the Wilshire Rodeo Station. Metro Purple Line Extension Project Section 2 and the City of Beverly Hills worked together to execute a full closure of Wilshire Blvd at the Rodeo Station box. This closure allows the contractor, TPOG, to expedite piling and decking activities during the Safer At Home Emergency Order. With less traffic on the usually congested Wilshire Blvd, in the heart of Beverly Hills' Business District, it was a win-win for the City and for Metro.

Metro Deputy Chief Program Management Officer Bryan Pennington, Metro Project Manager Mike McKenna, Metro Senior Director of Construction Kim Wilson and TPOG Project Manager Chris Dixon led the group to see firsthand the amount of work that has been expedited due to Council's recent approval of a full closure of Wilshire. Tour attendees were impressed with the closure and the additional mitigation measures being utilized during this unprecedented time. The tour and

photos were taken while practicing social distancing measures.



May 2020 Operations Employees of the Month

Operations department recognized Employees of the Month during the virtual Operations, Safety and Customer Experience Committee. Operators Steven Ramirez and Norma Marlowe from Division 11, A Line (Blue) received recognition on the Transportation-side. They are both exemplary employees always improving their job performance skills to perform at the highest level of efficiency.

Mr. Ramirez takes exceptional pride in winning 1st place in the annual Metro Rail Rodeo 2 years in a row. Ms. Marlowe, over her many years at the A Line Division, has participated in multiple Rail Rodeos taking 1st Place in 2013 and 2nd Place in the most recent 2020 Rail Rodeo. Participating in Rail Rodeos requires a lot of extra studying and preparation to compete with many other seasoned Train Operators. Congratulations to both of these outstanding operators.

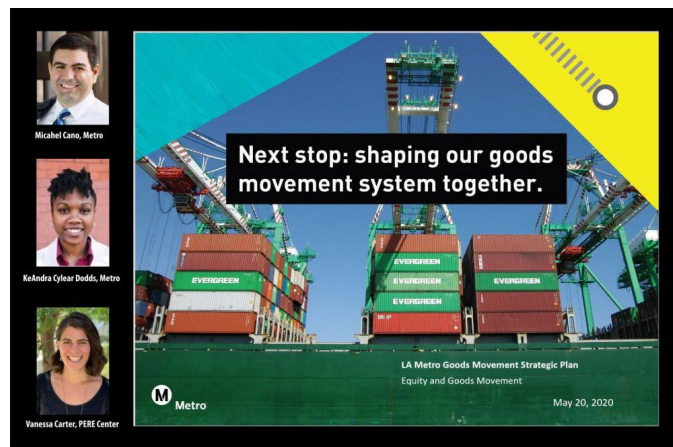
From the maintenance team, Mechanic A Rodney McGee and Equipment Maintenance Specialist Joe Guzman, both from Division 18 were awarded. On March 24, 2020, when Mr. McGee and Mr. Guzman were commuting to work, they heroically saved two small children from an accident on the freeway. A truck flipped over after hitting an SUV. Mr. McGee pulled over to help when he noticed that both children were buckled up in the car and the father was in a state of shock. Mr. McGee cut the seat belts and safely removed the children from the car. Mr. Guzman arrived at the scene soon after and started directing traffic until CHP arrived. The children's mom arrived and the whole family was reunited off the freeway.

LA County Goods Movement Strategic Plan Webinars

Over the past two weeks Metro's Countywide Planning and Development Goods Movement Planning team led a series of webinar meetings convening over 100 LA County goods movement leaders and stakeholders to present the status of the LA County Goods Movement Strategic Plan. Staff also received feedback on draft recommendations for the Plan's Early Action Initiatives covering the topics of Equity, Clean Truck Deployment, Logistics Workforce Development, Freight Rail Investment Partnerships and Urban Delivery. These initiatives will help implement the Sustainable Freight Competitiveness Framework developed by regional stakeholders as part of the

Plan development process. To support the Plan's focus on Equity as a core principle for goods movement planning, staff enlisted KeAndra Cylear Dodds, Metro's Executive Officer for Equity and Race, to present on and lead a discussion on Metro's Equity Program, defining and measuring equity, and ensuring equitable outcomes for the Plan. Staff also was pleased to have Vanessa Carter, Senior Data Analyst and Writing Specialist for the USC Program for Environmental and Regional Equity (PERE), present on ways to infuse equity into the Plan through the development of relevant data and the effective engagement of community based organizations.

The input and participation received from these webinars will help inform the development of the draft Plan that will be presented to the Metro Freight Working Group on June 2 and to the Metro Planning and Programming Committee on June 17. I would like to thank Michael Cano, Deputy Executive Officer for Goods Movement Planning and his excellent staff Akiko Yamagami and Sona Babayan for their work in developing the Plan and engaging key stakeholders to come together to craft a Plan that will support LA County's economic, equity and sustainability goals. We also thank KeAndra for her leadership in advancing Metro's Equity Platform throughout the agency; and Vanessa and the USC PERE Center for their continued support of Metro's advancement of equity in LA County.



Metro's Second Tunnel Boring Machine Reaches Wilshire/Fairfax Station Site

On Friday, we were pleased to report a new milestone for Section 1 of the Purple Line Extension Project: the agency's second tunnel boring machine (TBM) officially reached the Wilshire/Fairfax station site. The underground soil conditions in this area of Los Angeles represent some of the most challenging for the project. The agency's modern, high-tech TBMs have successfully mined through a unique combination of soils and geologic conditions, including tar sands and methane gas. Tunneling for the first three miles of this four-mile initial project section is now complete. For additional details on this milestone, please see the story on [The Source](#).

Procurement Postings

Wear Indicator Kits (IFB)

Invitation for Bids IFB to procure wear indicator kits. The procurement process blackout period is

expected to run from Friday, May 22, 2020 through Wednesday, September 30, 2020.

This procurement is to purchase wear indicator kits to be used on the brake pads for the later model New Flyer buses. An indicator warning light comes on when the brake pad exceeds 75% wear. The warning light is a preventative method to minimize any damage that could occur if the brake pad metal come in contact with other brake components. Contractor is required to meet all specifications outlined in the technical requirements. This will be an Indefinite Delivery/Indefinite Quantity (IDIQ) contract basis.

Any inquiries concerning this procurement action during the blackout period must be directed to and may only be answered by Tanya Allen, Procurement Planning Administrator at (213) 922-1018.

Construction Notices: Purple Line Extension, Regional Connector, I-5

Purple Line Extension Project: K-Rail Work Zone Enclosures

Wilshire Blvd. between San Diego Way and La Jolla Ave. will be reduced to two lanes in each direction. Two K-Rail work zones will be implemented to support ongoing mitigation efforts in the Wilshire Blvd./Crescent Heights Blvd. area starting Monday, May 11, 2020, through Friday, August 14, 2020. Street parking will be restricted. To learn more, click [here](#).

Regional Connector: Street Restoration closures at 1st/Alameda in DTLA

Street restoration at the 1st St and Alameda St intersection is now underway and scheduled to last through August 31, 2020. Plan ahead as lane reductions and road closures will be in place through the summer, as this work will be completed in two stages, each lasting approximately four months.

This effort marks the transition into the final phase of construction for the Regional Connector and brings it one step closer to testing and revenue operation. To learn more, click [here](#).

Caltrans Interstate 5: All Construction Updates [here](#).

" Never in the field of human conflict was so much owed by so many to so few."

~ Winston Churchill

[Press Room](#) | [Project & Programs](#) | [Meeting Agendas](#) | [Riding Metro](#) | [Metro Library](#)



You have subscribed to receive Metro information, [manage subscriptions](#), or [unsubscribe](#).

Your privacy is important to us, please review the [Privacy Policy](#).
View this email [online](#).

© 2019 Metro, 1 Gateway Plaza, Los Angeles, CA 90012, United States

This email was sent to

Bus & Rail Transit information
323.GO.METRO (323.466.3876)
6:30am - 7pm (Monday - Friday)
8:00am - 4:30pm (Saturday/Sunday)

Email Marketing by ActiveCampaign