



# CEO BRIEF | EVERY VOICE COUNTS

**Phillip A. Washington**  
Chief Executive Officer

**Monday, August 17, 2020**

## **In this Issue**

- **NextGen Bus Plan Public Hearings**
  - **Happy 25th Birthday C (Green) Line**
  - **The Tunnel Achievement Award goes to Metro's Regional Connector**
  - **Metro Bike Share Continues to Expand in Central LA**
  - **Virtual Workshops Geared to Expand Opportunities for Small Businesses and Subrecipients**
  - **Metro's Transit App Now Predicts Crowding Levels on Buses**
  - **Metro Launches an Upcycling Call for Ideas**
  - **Procurement Postings**
  - **Construction Notices**
- 

### **NextGen Bus Plan Public Hearings**

This week marks an important milestone in the development of the NextGen Bus Plan as we kick-off our virtual Public Hearings. This is the opportunity for the public to provide comment and tell us what they think about the proposed major service changes to Metro's bus service. We are accepting comments through Thursday, August 27, 2020.

The public hearings will be available to watch live on our webpage, [metro.net/nextgen](https://metro.net/nextgen). All they have to do is go to Upcoming Events and the link will be next to the hearing listed once the meeting starts. The public can watch or listen to any of the public hearings scheduled as follows:

#### **San Fernando Valley Service Council Area**

Wednesday, August 19, 6:30pm

### **South Bay Cities Service Council Area**

Thursday, August 20, 6pm

### **All Regions**

Saturday, August 22, 10am

### **San Gabriel Valley Service Council Area**

Monday, August 24, 6pm

### **Westside Central Service Council Area**

Wednesday, August 26, 6pm

### **Gateway Cities Service Council Area**

Thursday, August 27, 6pm

Simultaneous translation for all hearings will be available in Spanish, Mandarin, and Russian. Public comments received online prior to and during the public hearing will be read aloud during the public hearing session and will become part of the public record. All comments will be reviewed and evaluated as part of the decision-making process.

---

### **Happy 25th Birthday C (Green) Line**

This past Wednesday, August 12, was the 25th birthday of the C (Green) Line. The C Line was built as part of the controversial 105 freeway project. There were a range of racial injustices and environmental issues, including: 1) the bulldozing of low-income, communities of color for the freeway, and 2) making the train hard to reach by sticking mostly to the middle of a busy freeway. While we acknowledge its problematic history, we recognize that the C Line is here to stay. If there's an upside, it's that the C Line has still managed to deliver millions of rides over the past 25 years and there are several projects either underway or in the planning pipeline that will improve it. To learn more about the C Line's past history and upcoming improvements, click [here](#) to read about it on The Source.



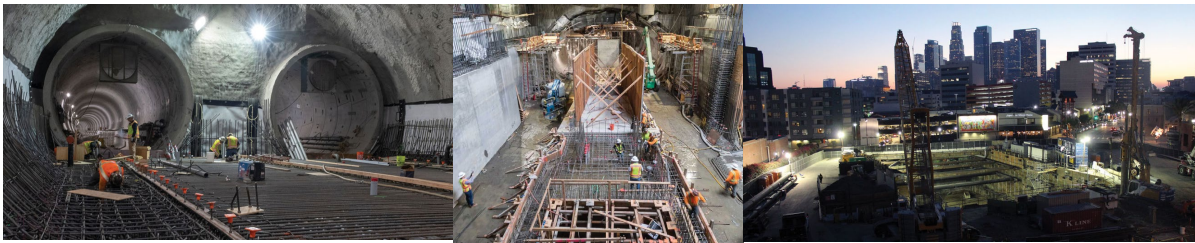
---

### **The Tunnel Achievement Award goes to Metro's Regional Connector Project**

The Regional Connector Project has won the Tunnel Achievement Award for 2020 by the Tunnel Business Magazine. Established in 2012, the Tunnel Achievement Award recognizes projects that are successfully completed and demonstrate innovation and teamwork, and provide benefits to the community. The award is presented by the organizers of the Breakthroughs in Tunneling Short Course in conjunction with Tunnel Business Magazine. Below are some past winners.

- 2020: Regional Connector, Los Angeles, CA
- 2019: Ohio Canal Interceptor Tunnel, Akron, OH
- 2018: Northgate Link Extension, Seattle, WA
- 2017: Blue Plains Tunnel, Washington, DC
- 2016: Lake Mead Intake No. 3, Las Vegas, NV
- 2015: Bay Tunnel, San Francisco, CA

For more information on the Regional Connector Project, please click [here](#) to read the story from the Tunnel Business Magazine.



---

### **Metro Bike Share Continues to Expand in Central LA**

Metro and the City of Los Angeles installed the 210th bike share station last Thursday, August 13 in the Mohawk Bend neighborhood of Echo Park. Staff was accompanied by Los Angeles City Council Member Mitch O'Farrell, who represents District 13 and was on hand for the installation of the new station in his district. Metro staff has worked closely with the Los Angeles Department of Transportation (LADOT) and Los Angeles Council District 13 to determine the location of all 19 bike share stations now in operation in Echo Park and Silverlake.

Metro Bike Share is available for short point to point trips and connections to transit from Santa Monica to Pico-Union to Downtown LA. Bikes can be unlocked at station kiosks, by using a Metro TAP card and by using the official Metro Bike Share app available for iOS and Android devices. Rides on Metro Bike Share start at \$1.75 for every 30 minutes, and reduced fares are available. During the COVID-19 pandemic, Metro Bike Share has provided a transportation option for essential workers and for essential trips. As a result, the bike share network has experienced less decreases in ridership when compared to other transportation modes.

In addition, staff continues to work on the Board approved Phase III expansion of the program, which will grow the system to 250+ stations by next year. To date, approximately 1.1 million trips have been made on Metro Bike Share in LA County. Bike share riders have

collectively traveled nearly 4 million miles on the bicycles since the program launched in July 2016 and have reduced over 8.9 million pounds of carbon dioxide emissions – a major greenhouse gas – from the air.

For more information on Metro Bike Share, visit [metro.net/bikeshare](https://metro.net/bikeshare). For a map of bike lanes, bike paths and bike routes in Los Angeles County, visit Metro's interactive [online Metro Bike Map](#).



---

### **Virtual Workshops Geared to Expand Opportunities for Small Businesses and Subrecipients**

Last week, Metro's Management Audit Services (MAS) in partnership with Diversity & Economic Opportunity Department (DEOD), hosted "Virtual SBE/DBE Audit Workshop" geared to provide the Small Business Enterprise (SBE)/Disadvantaged Business Enterprise (DBE) community with valuable information about "what they need to know to prepare" for contract audit. The workshop garnered the participation of more than 150 DBE/SBEs representatives. MAS team members walked the small businesses through information on how to have a successful audit, common audit findings and the Form 60 components, including the associated audit support required during an audit.

In addition, MAS in partnership with Metro's Local Programming department recently hosted virtual Consolidated Audit Kickoff Workshops for representatives from the 88 cities and the County of Los Angeles in preparation for the FY20 audits of Prop A and C, Measures R and M Local Return and various Metro funded programs. Thank you to MAS for supporting Metro in delivering trust, accountability and value to communities that we serve.

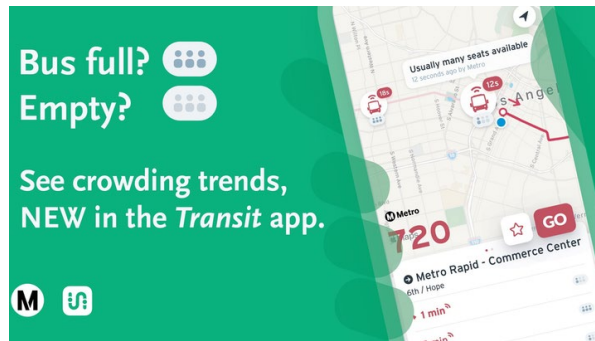
---

### **Metro's Transit App Now Predicts Crowding Levels on Buses**

Crowding levels on buses are now available through Metro's Transit app. The new feature in the app will use recent ridership numbers to predict the crowding levels on L.A. Metro buses. Just tap on the bus icon and crowding levels will show up. With coronavirus still spreading in the region, the predictions will help riders decide whether they want to ride L.A. Metro, wait for another bus or seek another way to reach their destination.

The estimated number of riders is shown using three levels and is based on the size of the vehicle. The predictions are based on regularly updated data collected in the prior two weeks from automated passenger counters on Metro buses. That allows the Transit app to predict the number of riders on any Metro bus at a particular time, location and direction of travel, following the most recent ridership trends.

To read the full article from Mass Transit Magazine, please click [here](#).



---

## Metro Launches an Upcycling Call for Ideas

Last week, Metro Environmental (ECSD) hosted their latest in a series of environmental resiliency web forums – on Upcycling. While Metro moves toward zero waste, we are looking for ways to repurpose the waste we generate into useful products. This isn't just recycling, but up-cycling.

Upcycling not only reduces the cost of sending waste to landfills, but also reduces the negative health and environmental impacts associated with transporting the waste and processing it. The Upcycling Forum invited innovators in industry leaders to see the types of waste Metro generates so they could help us with cost-saving strategies to divert waste from landfill. Individuals and businesses are invited to submit their ideas as phase 1 of this project. Please click [here](#) for the submittal process and resources.

Thursday's forum started with a kickoff from Chief Sustainability Officer, Dr. Cris Liban, who shared Metro's commitment to sustainability and outlined Metro's ambitious waste diversion and reduction goals. Metro staff shared information on targeted waste streams and why these items might be optimal for this effort.

A recording of the web forum will be available shortly. Other resources, including how to submit an idea, are available on the project site. Anyone can submit an idea, whether or not they attended the forum. Submittals are due September 17. Please send questions to [sustainability@metro.net](mailto:sustainability@metro.net).





---

## Procurement Postings

### Synthetic Transmission Oil (IFB)

Metro released an Invitation for Bids (IFB) to procure synthetic transmission oil. The procurement process blackout period is expected to run from Friday, August 14, 2020 through Friday, December 11, 2020.

This procurement is for the purchase of synthetic transmission oil required to maintain the bus fleet and thus avoid disruption in service. Award of a contract will provide a commitment from the supplier to ensure availability at as outlined in the Technical Requirements on an Indefinite Delivery/Indefinite Quantity (IDIQ) contract basis.

Any inquiries concerning this procurement action during the blackout period must be directed to and may only be answered by Tanya Allen, Procurement Planning Administrator, at [allentm@metro.net](mailto:allentm@metro.net).

---

## Construction Notices: Regional Connector, I-5

### Regional Connector: Street Restoration closures at 1st/Alameda in DTLA

Street restoration at the 1st St and Alameda St intersection is now underway and scheduled to last through August 31, 2020. Plan ahead as lane reductions and road closures will be in place through the summer, as this work will be completed in two stages, each lasting approximately four months.

This effort marks the transition into the final phase of construction for the Regional Connector and brings it one step closer to testing and revenue operation. To learn more, click [here](#).

Caltrans Interstate 5: All Construction Updates [here](#).

---

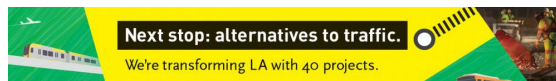
"If you were born with the weakness to fall, you were born with the strength to rise."

~ Rupi Kaur

---

[Press Room](#) | [Project & Programs](#) | [Meeting Agendas](#) | [Riding Metro](#) | [Metro Library](#)

---



You have subscribed to receive Metro information, [manage subscriptions](#), or [unsubscribe](#).

Your privacy is important to us, please review the [Privacy Policy](#).

View this email [online](#).

© 2019 Metro, 1 Gateway Plaza, Los Angeles, CA 90012, United States

**This email was sent to**

**Bus & Rail Transit information**

323.GO.METRO (323.466.3876)

6:30am - 7pm (Monday - Friday)

8:00am - 4:30pm (Saturday/Sunday)

Email Marketing by ActiveCampaign