



Monday, October 26, 2020

In this Issue

- **New Rosa Parks Customer Center Opens to the Public**
- **Groundbreaking Event for SEED School Los Angeles**
- **FY21 Adopted Budget Available Online**
- **On the Move Riders Program and Metro Art Tours Collaborate to Virtually Engage Older Adults**
- **Metro Commemorative Token Wearables on Sale at the Metro Shop**
- **Procurement Postings**
- **Construction Notices**

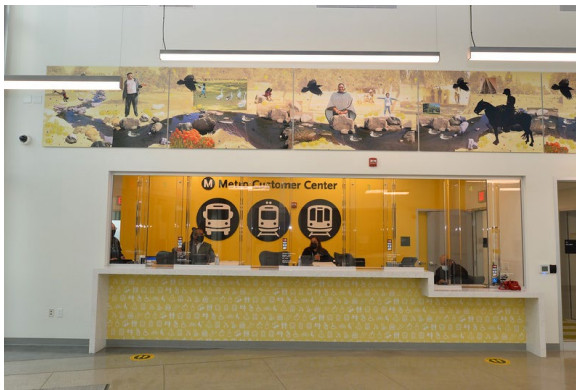
New Rosa Parks Customer Center Opens to the Public

This morning, I joined Metro Board Chair and L.A. Mayor Eric Garcetti, Metro Board Member and L.A. County Supervisor Mark Ridley-Thomas, and Metro Board member Jacquelyn Dupont-Walker for a sneak-peek event for the new Rosa Parks Customer Center located at the A Line (Blue) Willowbrook/Rosa Parks Station.

The new Metro Customer Center includes a public plaza, bike hub with bicycle storage and vendor service, and a new pedestrian promenade between the station and Wilmington Avenue that will make it safer and more pleasant for riders to reach buses and trains. Safety and security at the station has also been enhanced with over 150 new security cameras, an upgraded LED lighting system that provides better illumination, and a new public address system.

The \$128-million new facilities at the Willowbrook/Rosa Parks Station are part of the New

Blue Improvements State of Good Repair project that included a \$350 million overhaul of the entire A Line (Blue) in 2019 and intends to enhance the customer experience for Metro riders.



Groundbreaking Event for SEED School Los Angeles

Last Wednesday, I joined Supervisor Mark Ridley-Thomas, LA City Councilmember Marqueece Harris Dawson, Metro Director Jacquelyn Dupont-Walker, SEED School CEO Lesly Poole and several others from the Manchester-Vermont community for the groundbreaking for construction of the future SEED School of Los Angeles County.

The SEED School will be a public high school and boarding school that will prepare students for careers in the transportation industry. Located at Vermont and Manchester in South LA – the school is the centerpiece of a large workforce development initiative that Metro has planned to address the transportation industry’s need for a skilled workforce. It is an opportunity to build a qualified workforce for the transportation industry, while also giving local opportunity youth a pathway to meaningful careers and fulfilling lives.

The 4.2-acre parcel has been vacant since 1992 and the new development will include the boarding school, 180 units of affordable housing, community-focused retail, a public plaza and a job training center. The need for this school – in our country right now – is critical and goes far beyond training the future transportation workforce.

Many thanks to the partnership of LA County and SEED School, thanks to our Metro Board for their full support and to Jacobs Engineering for their multi-year investment in this project. Construction is expected to be completed in 2022. For a video and more information on the

FY21 Adopted Budget Available Online

In March 2020, the onset of the Coronavirus Disease 2019 (COVID-19) pandemic unexpectedly altered the trajectory of the economy. Due to the uncertainty of available resources, development of the FY21 budget was deferred, and the Metro Board adopted a continuing resolution to extend FY20 budget authorization through September 2020. The Metro Board adopted the FY21 Proposed Budget on September 24, 2020.

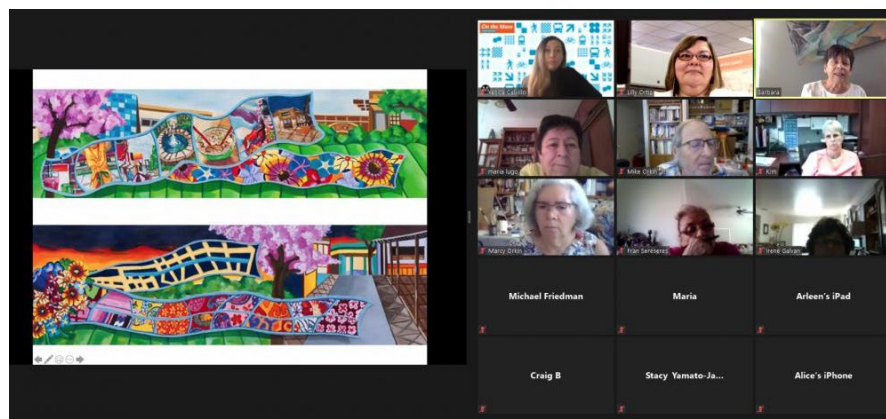
The FY21 Adopted Budget has been posted online and is currently available. Please click [here](#) to view the FY21 Adopted Budget Report.

On the Move Riders Program and Metro Art Tours Collaborate to Virtually Engage Older Adults

This month, On the Move Riders Program (OTMRP) and Metro Art Tours hosted five virtual tours for older adults in each of the five regions of Los Angeles County. Barbara Lashenick, founder of the Metro Art Docent Council, led the participants on a stunning virtual tour along the E Line from Westwood/Palms to the Downtown Santa Monica station. The outstanding collaboration work among OTMRP and Metro Art Tours provided older adults with a unique Metro experience from the safety of their home. As one of the participants can attest:

“Your virtual tour really enhanced the art found at the five stations we visited today, and it’s unbelievable how creative and talented the artists are. My husband and I plan, after COVID, to ride the Metro rail to visit the stations you featured today. Thank you very very much!” - Jill, Gateway Cities

Thank you OTMRP and Metro Art Tours for your collaboration and continuing to engage the public in new and creative ways during these challenging times.



Metro Commemorative Token Wearables are now available for purchase online at the [Metro Shop](#) while supplies last. These wearables were created to commemorate the Metro token. Dress up your at-home office attire with these fun accessories, which include:

- Badge Holders
- Cufflinks
- Lapel Pins

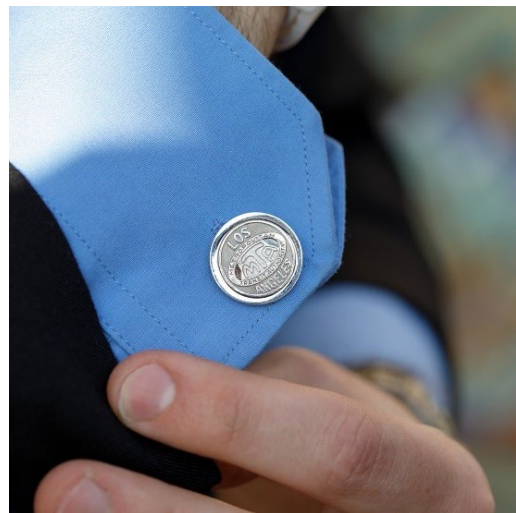
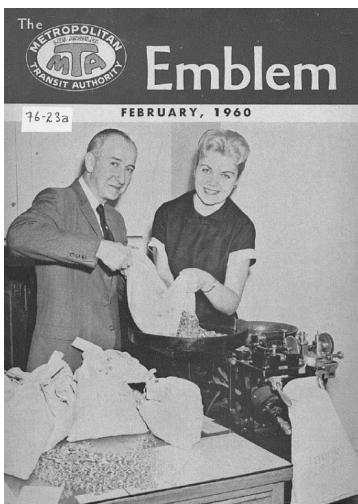
Token History

The wearables feature the Los Angeles Metropolitan Transit Authority (LAMTA) tokens with the iconic "mushroom" logo that were first distributed in 1960 and had a value ranging from 14 cents to 25 cents. These tokens marked a new era, as it was the first time the Los Angeles transit system became publicly owned, operated, and governed by LAMTA.

In November 1964, LAMTA merged into the Southern California Rapid Transit District (SCRTD) and continued accepting the LAMTA token at their 25-cent value.

These items were sustainably produced by a local vendor using upcycled tokens. They have now become a fashionable and eco-friendly way to commemorate the Metro token and its long-standing history.

Stay tuned for more information on additional token wearables items, including token pouches, made from reused air bags. These are expected to be distributed early 2021 for Operator Appreciation Day.



Procurement Postings

Overhead Crane and Hoist Inspection (IFB)

Metro released an Invitation for Bid (IFB) to procure inspection, certification, and testing services for all Metro cranes. The procurement process blackout period is expected to run from Friday, October 16, 2020 through Monday, January 25, 2021.

Metro is seeking the services of a qualified contractor to provide quarterly inspections, yearly certification and quadrennial load testing for all of Metro's jib cranes, bridge cranes, overhead and gantry cranes. In addition to inspection, testing and certification, the Contractor shall update numbering (ID) sequence and list of cranes for all jib cranes, bridge cranes, overhead and gantry cranes throughout Metro bus and rail transit facilities.

Any inquiries concerning this procurement action during the blackout period must be directed to and may only be answered by Marc Margoni, Principal Contract Administrator at (213) 922-1304.

Construction Notices: Regional Connector, Purple Line Extension, I-5

Regional Connector Transit Project - Partial Street Closure Central Av

In place now, through mid-November 2020, is a partial closure of Central Av between 1st St and 2nd St to allow construction of the station's roof and street restoration as the Regional Connector Transit Project enters its last phase of at-grade construction. To view the notice of work click [here](#).

Purple Line Extension Project: Lane Reductions between La Cienega and San Vicente

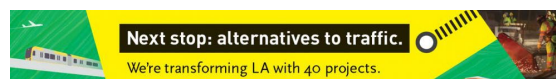
Eastbound Wilshire Blvd. between Stanley Dr. and San Vicente Blvd. may be intermittently reduced to a single lane to support ongoing station construction activities occurring between La Cienega Blvd. and San Vicente Blvd. These lane reductions are anticipated to begin on Tuesday, October 13. To view the notice of work click [here](#).

Caltrans Interstate 5: All Construction Updates [here](#).

"Art washes away from the soul the dust of everyday life."

~ Pablo Picasso

[Press Room](#) | [Project & Programs](#) | [Meeting Agendas](#) | [Riding Metro](#) | [Metro Library](#)





You have subscribed to receive Metro information, [manage subscriptions](#), or [unsubscribe](#).

Your privacy is important to us, please review the [Privacy Policy](#).
View this email [online](#).

© 2019 Metro, 1 Gateway Plaza, Los Angeles, CA 90012, United States

This email was sent to

Bus & Rail Transit information

323.GO.METRO (323.466.3876)

6:30am - 7pm (Monday - Friday)

8:00am - 4:30pm (Saturday/Sunday)

Email Marketing by ActiveCampaign