

# Weekly **LOS ANGELES** *TRANSIT LINES* Topics

Published weekly by the Bureau of Public Service, Los Angeles Transit Lines, 1060 South Broadway, Zone 15

VOLUME 6

MARCH 5, 1945

NUMBER 10

## A NOTICE FROM YOUR GOVERNMENT

A crisis is here. Buses and streetcars are overburdened as never before. With more men, tires and gas going to war, present service can barely be maintained. Each day brings greater loads as more autos are scrapped.

Only if YOU co-operate with your Government and your local transit company will buses and cars be able to do the job. When you MUST travel locally, let this be your creed:

1. **DO NOT RIDE IN RUSH HOURS** except to and from your job.
2. **HAVE YOUR EXACT FARE READY.** It saves time and fuss.
3. **MOVE BACK WHEN THE DRIVER ASKS.** It speeds your ride and helps your neighbor.
4. **RIDE RAIL CARS INSTEAD OF BUSES** when possible; it saves gas and tires.
5. **REQUEST STAGGERING OF YOUR WORKING HOURS.** Your buses and streetcars can then make more trips for workers.
6. **WALK** if you possibly can—on trips up to two miles.
7. **KEEP YOUR AUTO WORKING.** Form a ride-sharing group. It helps relieve the load on streetcars and buses.

Finally, don't expect comfort or convenience. It just isn't possible. But this simple creed will work wonders. Let's help ourselves.

*Jill Johnson*  
Director  
Office of Defense Transportation

### POLLY PATTERSON POINTERS

To prevent a door from creaking, rub a little soap or vaseline on the hinges; if a door sticks, rub a bar of soap over the edges.

To drive a nail or screw through wood without splitting it, first push the nail or screw through hard yellow soap.

### W-I-V-E-S

Enlist Now!

★ ★ ★

### JOIN THE W-I-V-E-S

And Serve The Home Front  
BECOME A CONDUCTOINETTE  
OR MOTORMANETTE AND  
WORK IN A FIELD WHICH HAS  
A DEFINITE FUTURE.

ENLIST

1056 South Broadway

### THIS WEEK'S JOB SCOREBOARD

We need

- 446 TRAINMEN
- 26 COACH OPERATORS
- 10 FIRST CLASS MECHANICS
- 36 APPRENTICE MECHANICS

If you want one of these important jobs bring your availability certificate immediately to

LOS ANGELES  
TRANSIT LINES  
1056 So. Broadway

Hear - The Talk of Our Town  
SOUTHLAND NEWS CAST  
Monday through Saturday  
KFAC — 11:30 A.M.

### FRIEND IN NEED

In foggy dawn or late at night  
You are my faithful, guiding light.  
I wait in shadows all alone,  
In cold that pierces to the bone,

Or in the sun's bright summer glare,  
- That I may meet you, here and there.  
And though I grow impatient when  
You keep me waiting, now and then,

I know that I should not, for you  
Take many others with you, too.  
Though you may be a little late,  
You do your best to keep our date.

Somewhere I'll find you on the track  
To take me there and bring me back,  
Though just a little way—or far—  
My friendly, sheltering streetcar!

—Peggy May Mosier

We must admit science is resource-  
ful. It couldn't open the window so it  
air-conditioned the train.

J  
O  
E  
  
W  
O  
E

JOE, CAN YOU HELP ME WITH MY INCOME TAX? IT'S JUST ABOUT GOT ME NUTS! NOW I EARNED BLAH-BLAH!



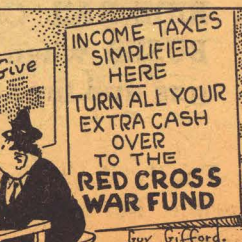
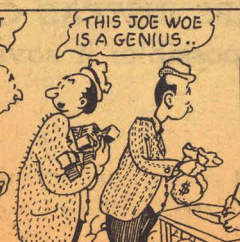
ARE YOU FAMILIAR WITH INCOME TAX FORMS? IS NUMBER 1040-A FOR BLONDES OR BRUNETTES?



LOOK, JOE, ON FORM 1040 SHALL I DEDUCT MY MOTHER-IN-LAW AS CHARITY—OR RUNNING EXPENSE?



YOU GET AROUND, JOE, SO YOU SHOULD KNOW WHAT I CAN DEDUCT ON MY INCOME TAX!



RIGHTS RESERVED SYND. IDEAS LTD.