



[Metro.net](#) (web)

**Resources**

- ▶ [Safety](#)
- ▶ [Pressroom](#) (web)
- ▶ [Ask the CEO](#)
- ▶ [CEO Forum](#)
- ▶ [Employee Recognition](#)
- ▶ [Employee Activities](#)
- ▶ [Metro Projects](#)
- ▶ [Facts at a Glance](#) (web)
- ▶ [Archives](#)
- ▶ [Events Calendar](#)
- ▶ [Research Center/Library](#)

▶ [Metro Classifieds](#)

▶ [Bazaar](#)

**Metro Info**

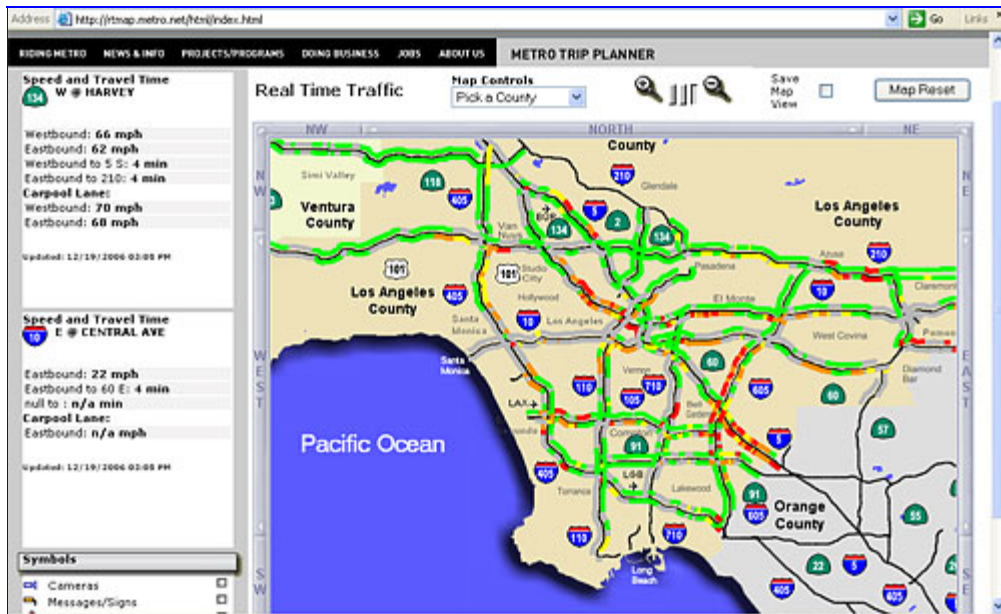
- ▶ [30/10 Initiative](#)
- ▶ [Policies](#)
- ▶ [Training](#)
- ▶ [Help Desk](#)
- ▶ [Intranet Policy](#)

**Need e-Help?**

Call the Help Desk at 2-4357

[Contact myMetro.net](#)

The Metro 'Real Time Traffic' feature provides free 24/7 traffic updates on freeways in Los Angeles and Ventura counties as well as for major streets in the City of Los Angeles.



[Check it out:](#) Click on image above to visit site.

## New Feature on metro.net Gives Public 'Real Time Traffic' Info

- Updates for LA-area freeways and streets available 24/7

By MARC LITTMAN

(Dec. 19, 2006) One of the most comprehensive traffic information services ever offered to the public made its debut today on the Internet at [www.metro.net](#).

The Metro "Real Time Traffic" feature provides free 24/7 traffic updates on freeways in Los Angeles and Ventura counties as well as for major streets in the City of Los Angeles.

Fed by Caltrans, CHP and LADOT, the data is updated every few minutes. It comes from cameras overlooking the freeways as well as electronic sensors embedded in the roadways.

Within a year, the feature will extend its traffic coverage to Orange, San Bernardino and Riverside counties. Currently, commuters link to traffic updates for those counties from the "Real Time Traffic" page.

Besides giving real time speeds for freeways and streets – including carpool lane speeds for comparison – web users can see what's displayed on freeway message signs and check out views from freeway cameras.

They also can click on icons that will pinpoint freeway incidents, such as

accidents, or track freeway construction closures. Map features allow viewers to zoom in and out, and the system will memorize a particular street or freeway location so a user can go right to it anytime.

Traffic information is displayed on metro.net, where the public can find ways to beat traffic by using the trip planner and other rideshare options.

As a measure of the interest in finding driving alternatives, metro.net already receives 40 million viewer hits a month. That number is expected to increase sharply with the new Metro "Real Time Traffic" feature.

---

| [Home](#) | [Phone Directory](#) | [Forms Online](#) | [FIS Online](#)