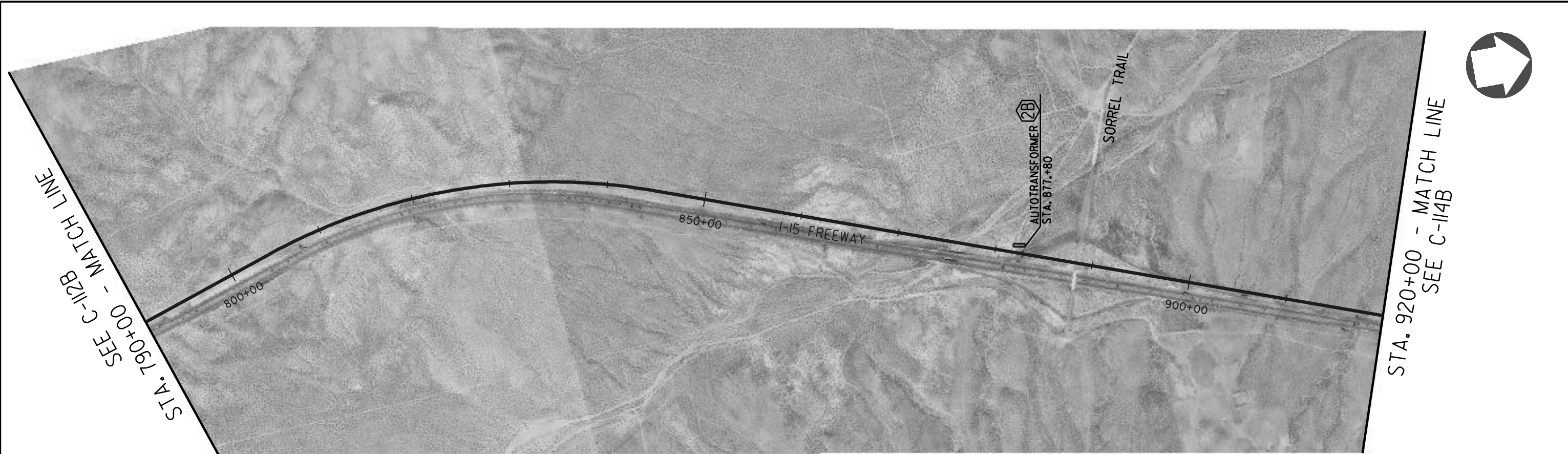


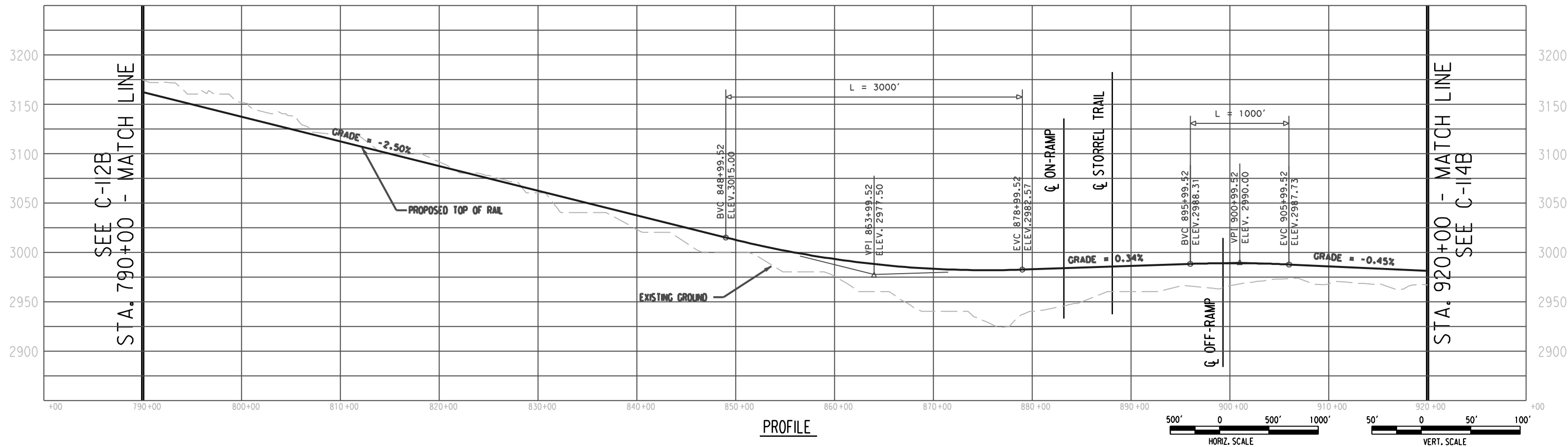
## **APPENDIX A-5**

# **AUTOTRANSFORMER LOCATION MAPS AND TYPICAL FOOTPRINT**





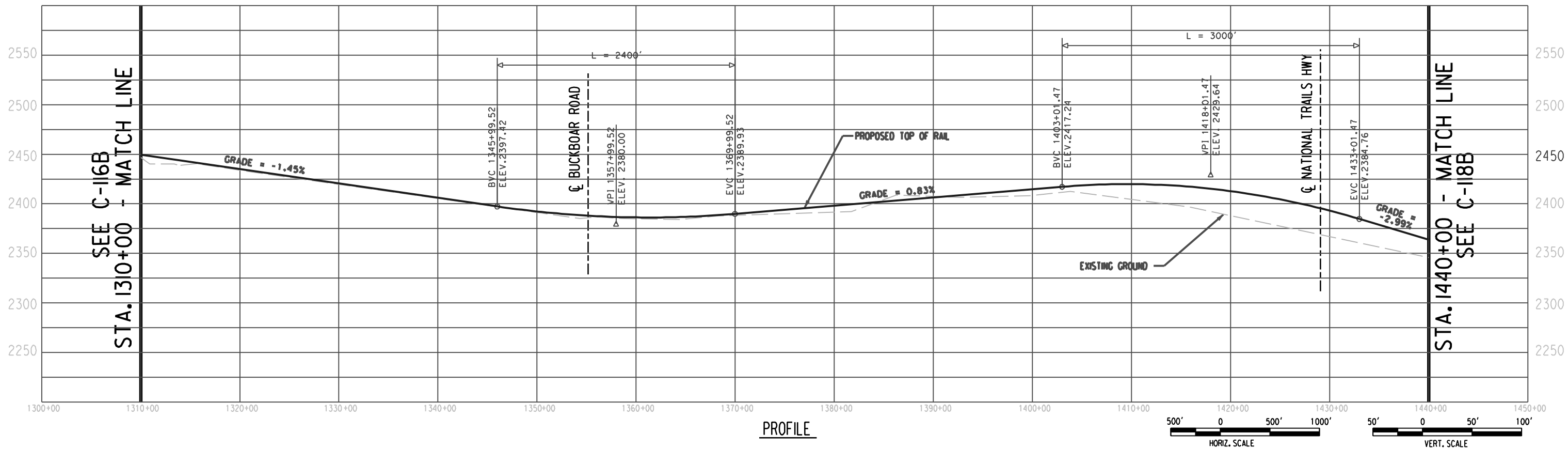
PLAN



PROFILE



PLAN



PROFILE

**Korve Engineering**  
 725 SOUTH FIGUEROA STREET, SUITE 2350  
 LOS ANGELES, CA. 90017

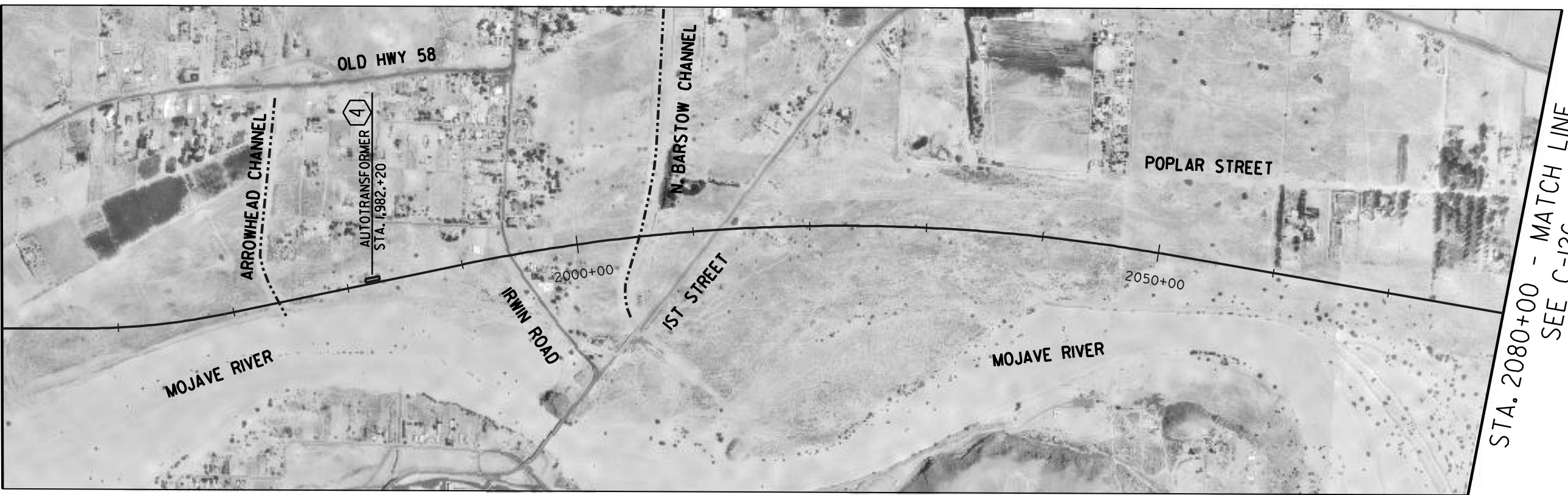
CONFIDENTIAL

DESERT X PRESS

PRELIMINARY CONCEPTUAL ALIGNMENT  
 EXISTING R/W & LIMITS OF INFLUENCE  
 VICTORVILLE TO LAS VEGAS  
 STATION 1310+00 TO 1440+00  
 SEGMENT I, ALTERNATIVE B

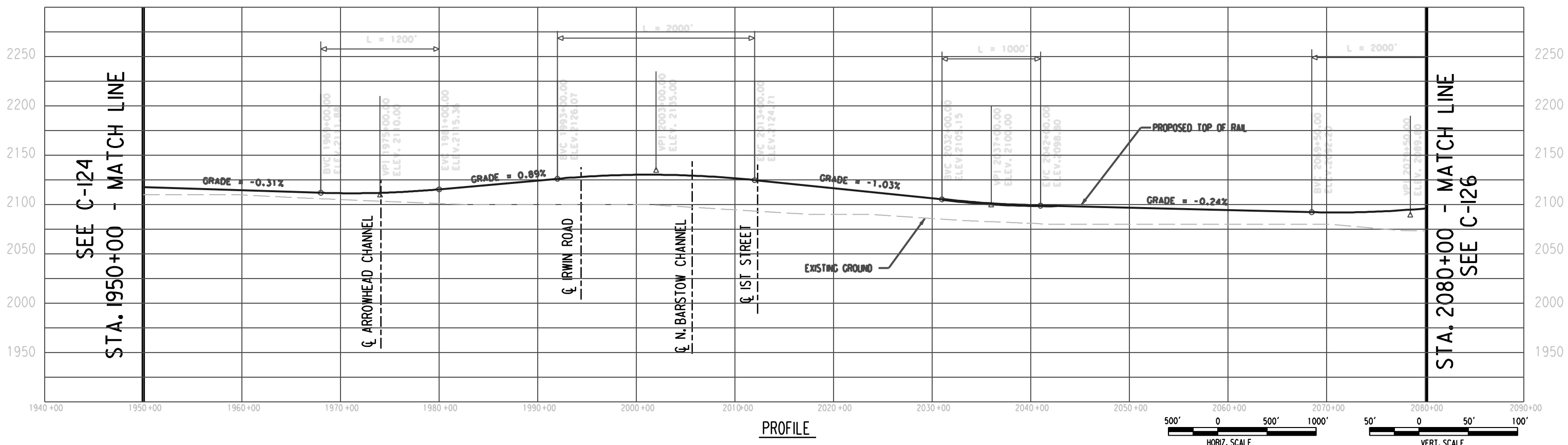
205062G0  
 DRAWING NO. AT-3B  
 DATE 06-29-07

SEE C-124  
STA. 1950+00 - MATCH LINE



STA. 2080+00 - MATCH LINE  
SEE C-126

PLAN



PROFILE



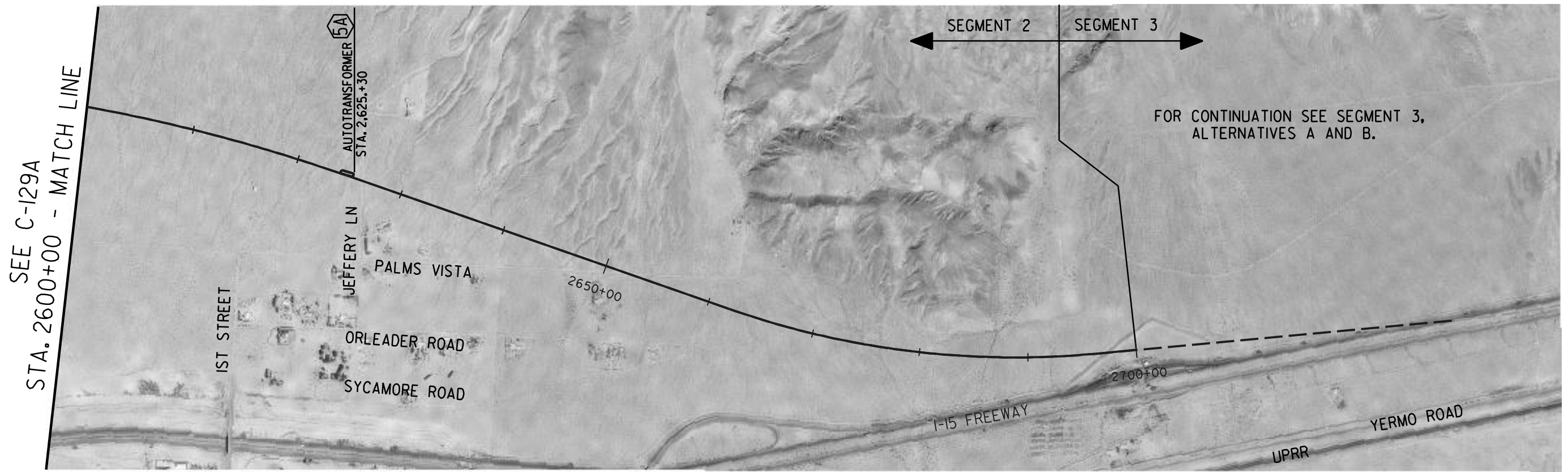
**Korve Engineering**  
725 SOUTH FIGUEROA STREET, SUITE 2350  
LOS ANGELES, CA. 90017

CONFIDENTIAL

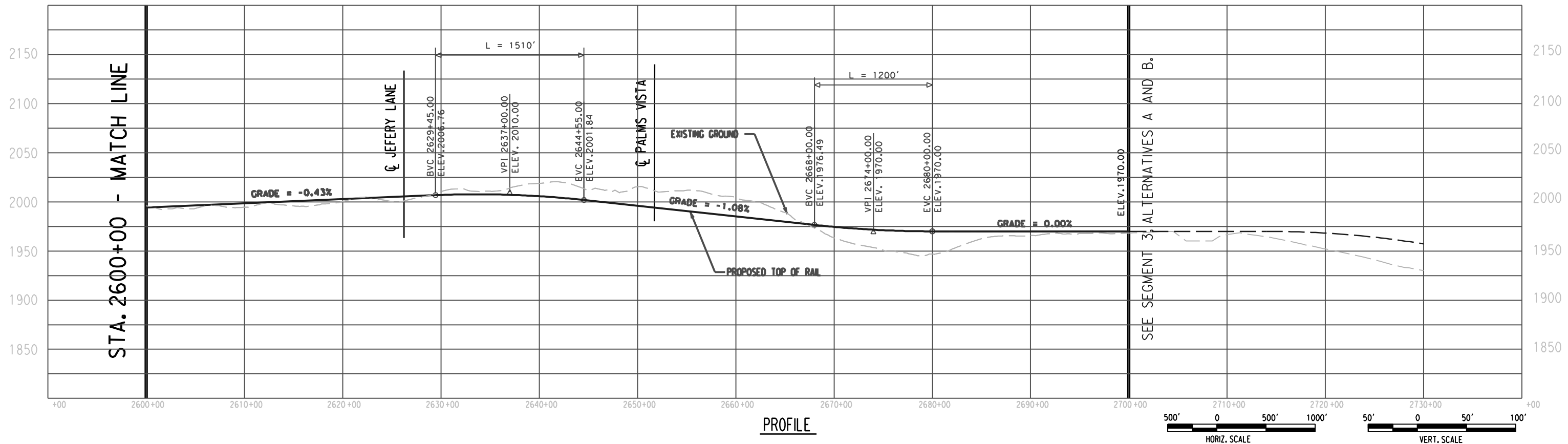
DESERT X PRESS

PRELIMINARY CONCEPTUAL ALIGNMENT  
EXISTING R/W & LIMITS OF INFLUENCE  
VICTORVILLE TO LAS VEGAS  
STA 1950+00 TO STA 2080+00  
SEGMENT 2

205062G0	
DRAWING NO	REV
AT-4	
DATE	
06-29-07	



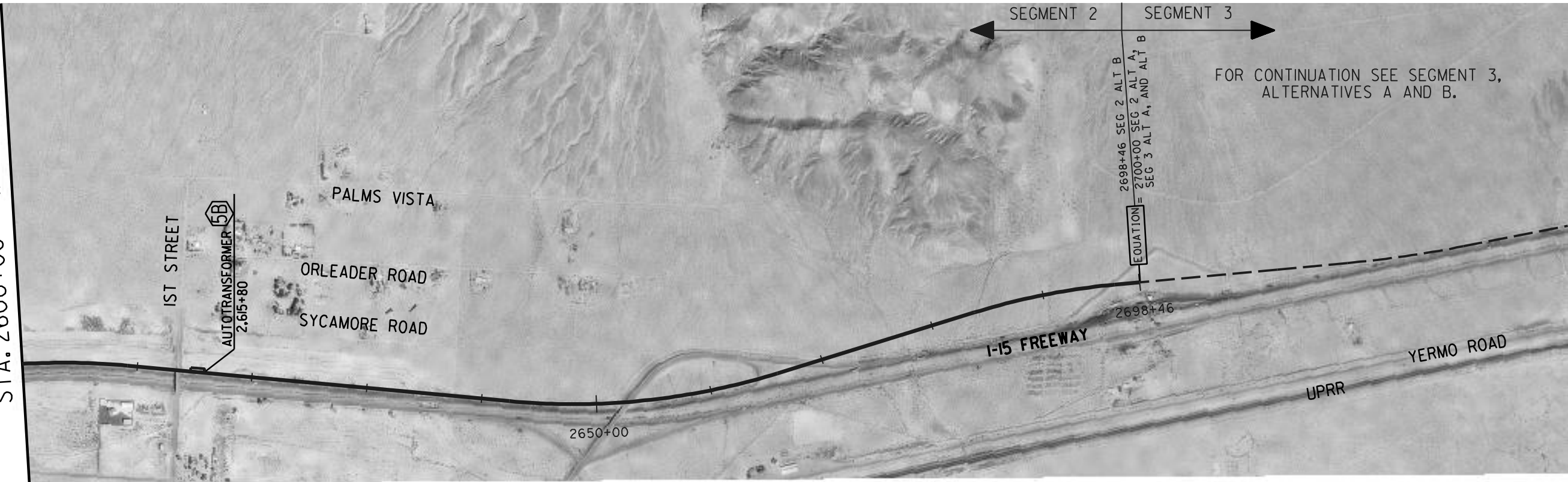
PLAN



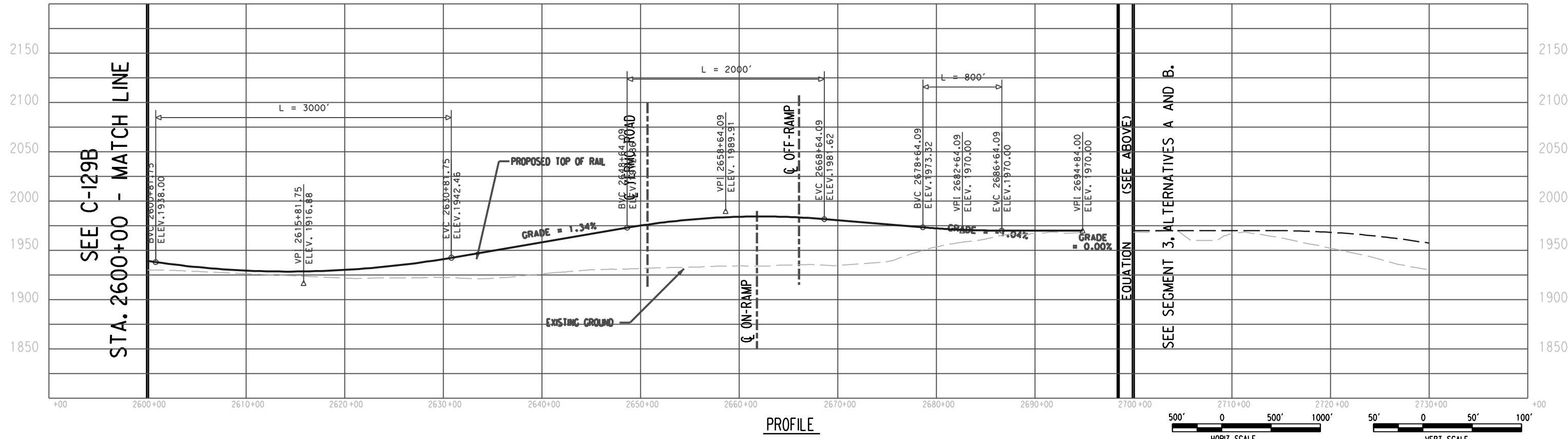
PROFILE



SEE C-129B  
STA. 2600+00 - MATCH LINE



PLAN



PROFILE

**Korve Engineering**  
725 SOUTH FIGUEROA STREET, SUITE 2350  
LOS ANGELES, CA, 90007

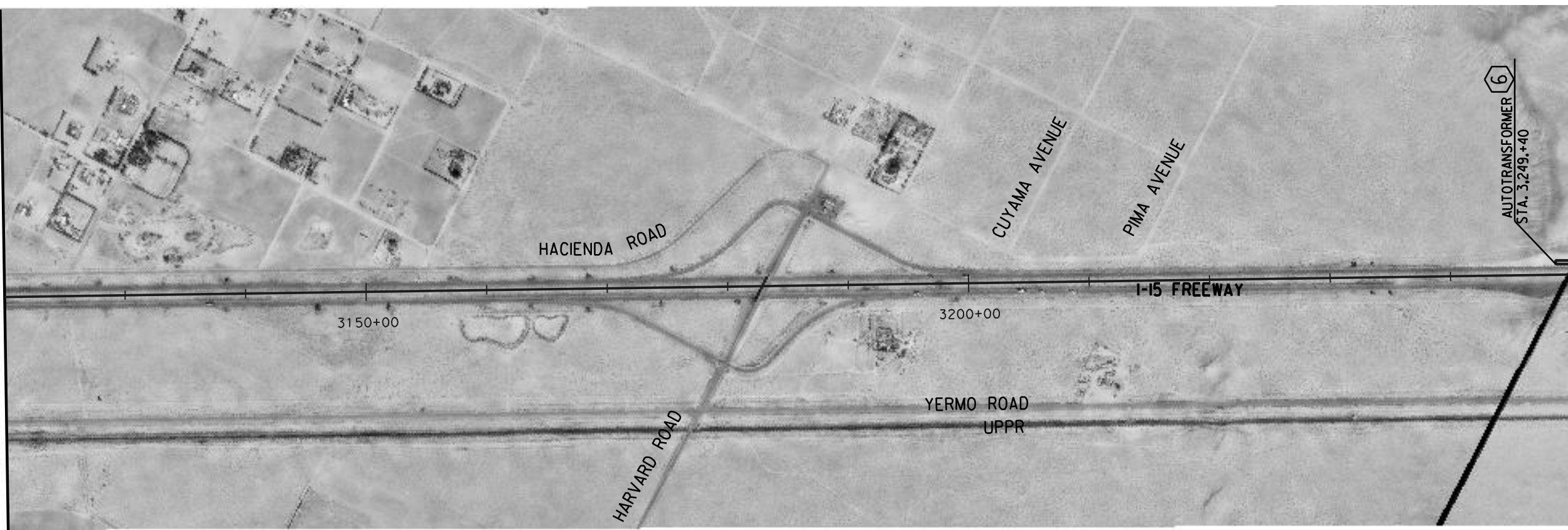
CONFIDENTIAL

DESERT X PRESS

PRELIMINARY CONCEPTUAL ALIGNMENT  
EXISTING R/W & LIMITS OF INFLUENCE  
VICTORVILLE TO LAS VEGAS  
STA 2600+00 TO STA 2698+46  
SEGMENT 2, ALTERNATIVE B

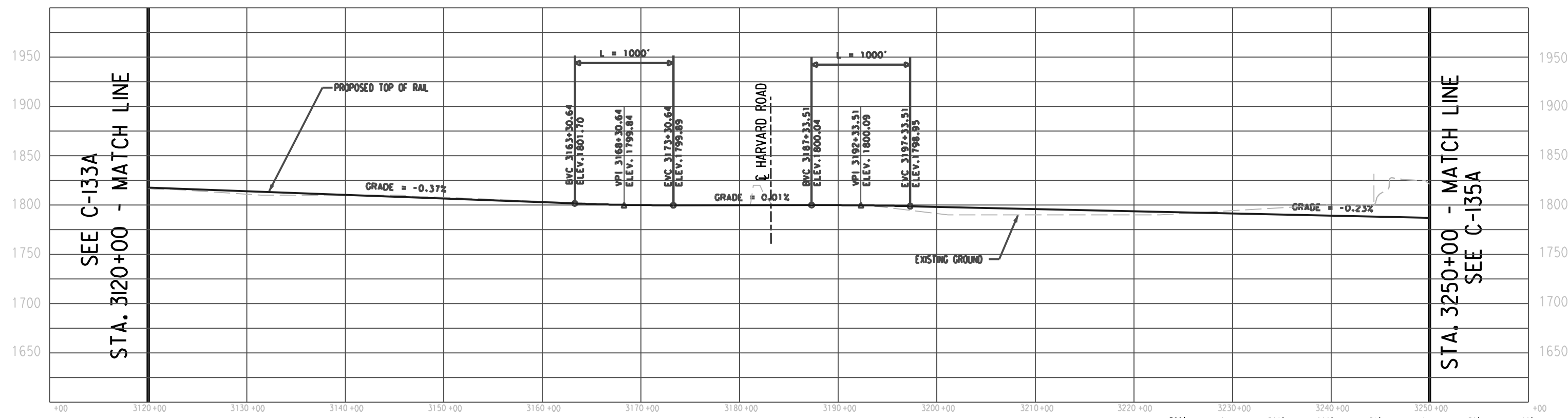
205062G0	
DRAWING NO	REV
AT-5B	
DATE	
06-29-07	

SEE C-133A  
STA. 3120+00 - MATCH LINE

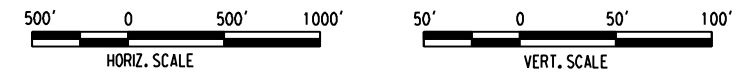


STA. 3250+00 - MATCH LINE  
SEE C-135A

PLAN

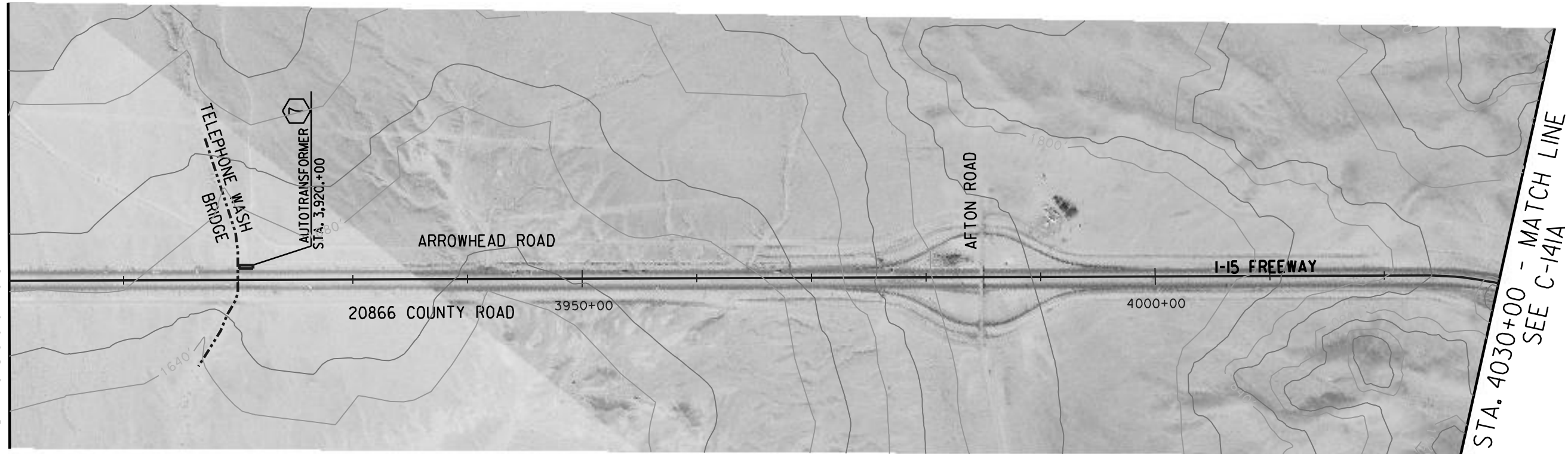


PROFILE





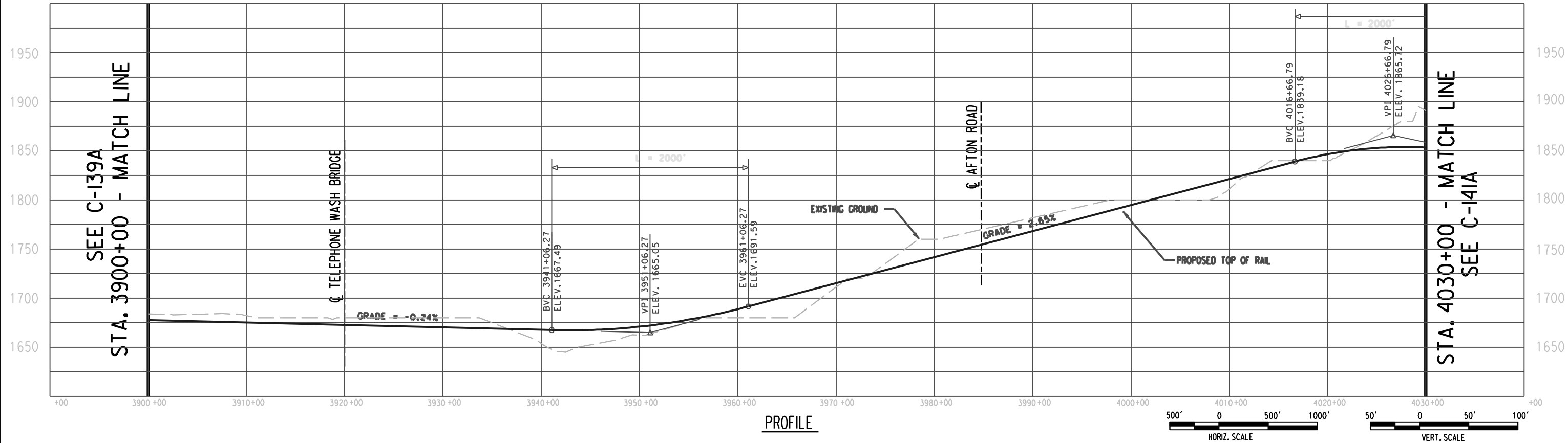
SEE C-139A  
STA. 3900+00 - MATCH LINE



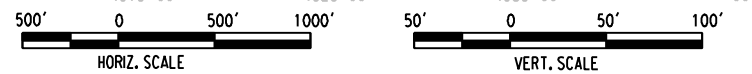
STA. 4030+00 - MATCH LINE  
SEE C-141A



PLAN



PROFILE



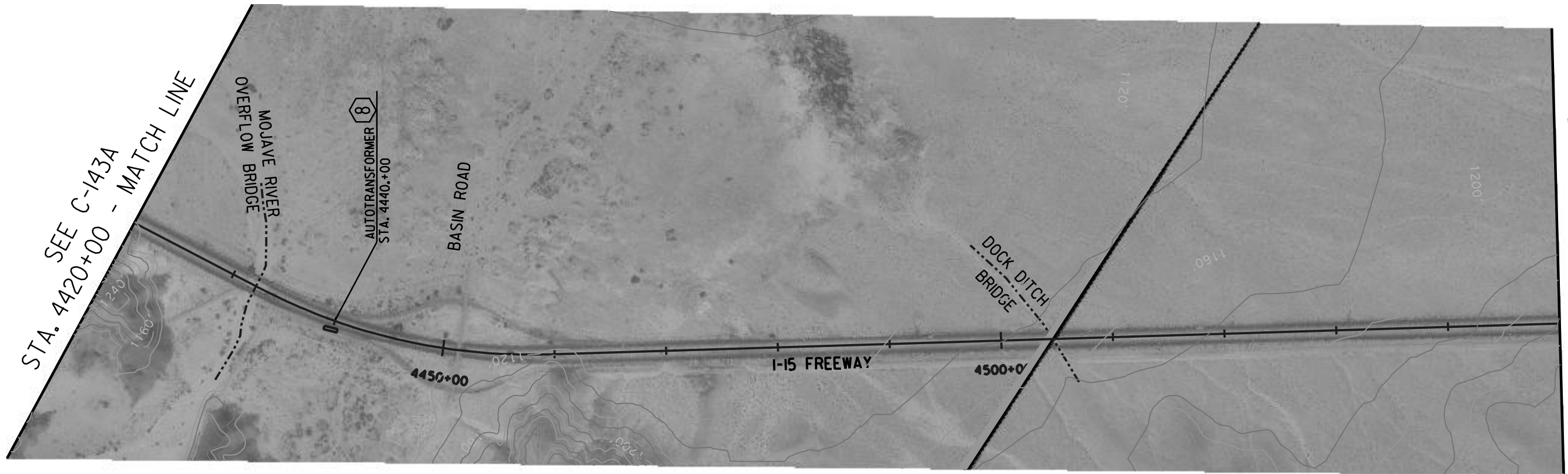
**Korve Engineering**  
725 SOUTH FIGUEROA STREET, SUITE 2350  
LOS ANGELES, CA. 90017

CONFIDENTIAL

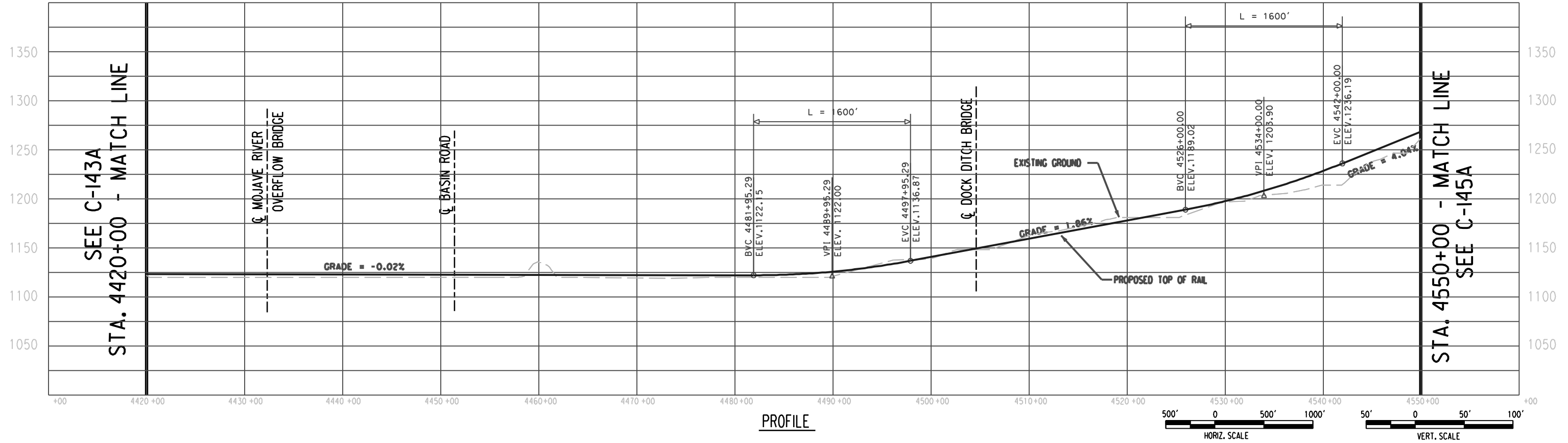
DESERT X PRESS

PRELIMINARY CONCEPTUAL ALIGNMENT  
EXISTING R/W & LIMITS OF INFLUENCE  
VICTORVILLE TO LAS VEGAS  
STA 3900+00 TO STA 4030+00  
SEGMENT 3, ALTERNATIVE A

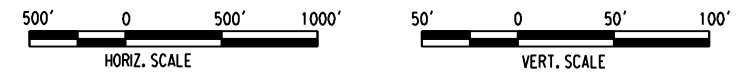
205062G0	
DRAWING NO	REV
AT-7	
DATE	06-29-07



PLAN



PROFILE



**Korve Engineering**  
 725 SOUTH FIGUEROA STREET, SUITE 2350  
 LOS ANGELES, CA, 90017

CONFIDENTIAL

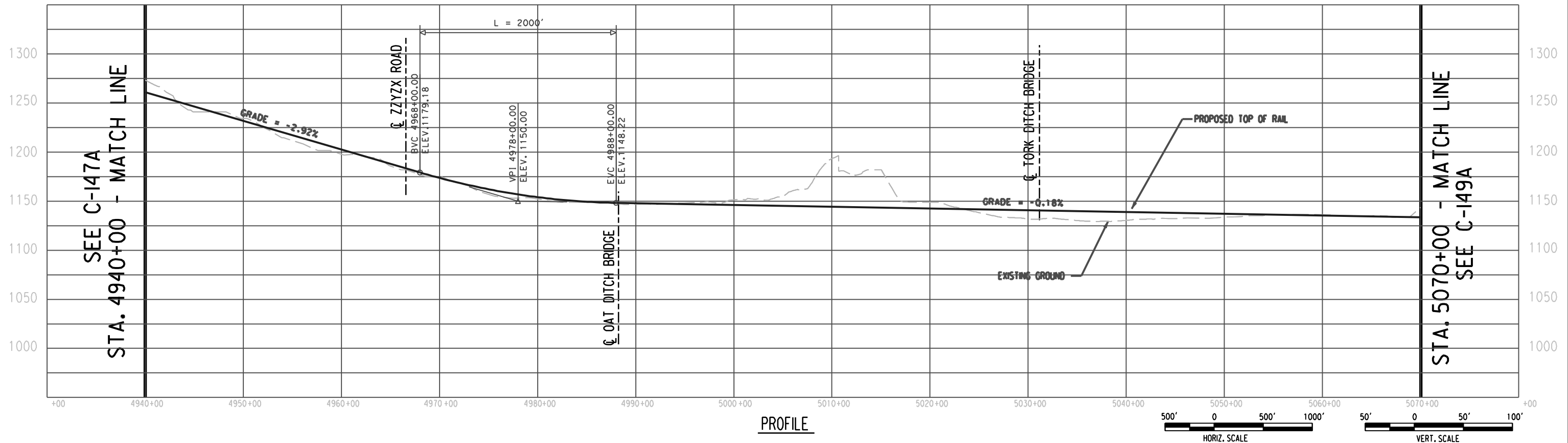
DESERT X PRESS

PRELIMINARY CONCEPTUAL ALIGNMENT  
 EXISTING R/W & LIMITS OF INFLUENCE  
 VICTORVILLE TO LAS VEGAS  
 STA 4420+00 TO STA 4550+00  
 SEGMENT 3, ALTERNATIVE A

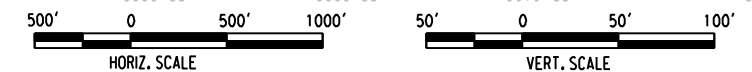
205062G0  
 DRAWING NO. AT-8  
 DATE 06-29-07



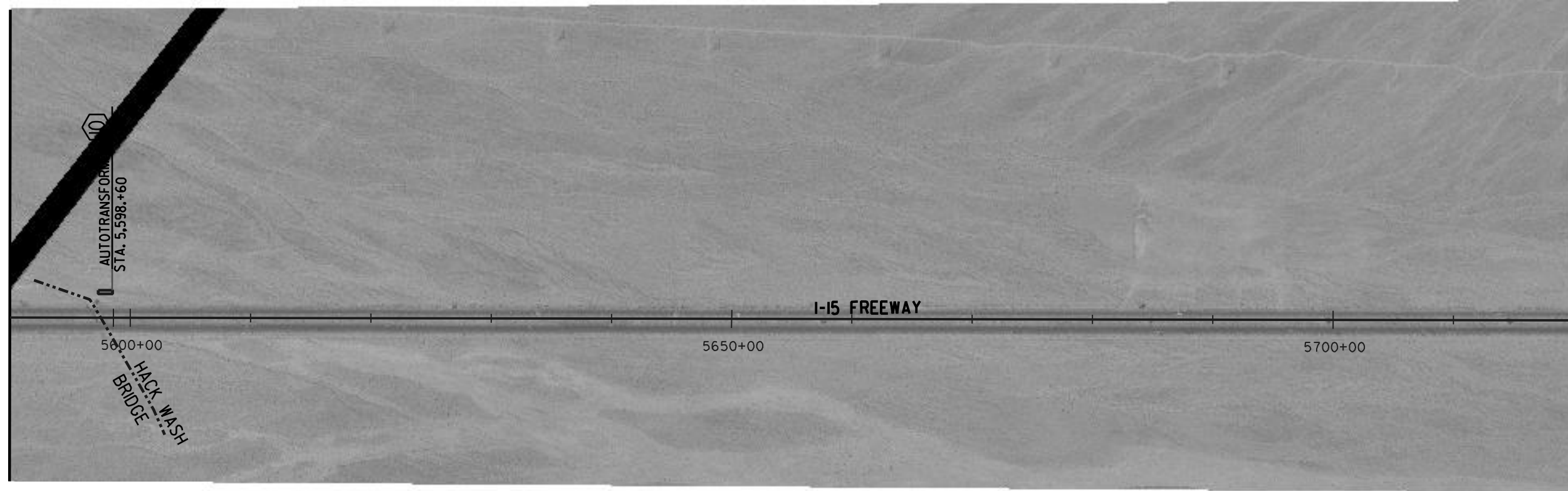
PLAN



PROFILE



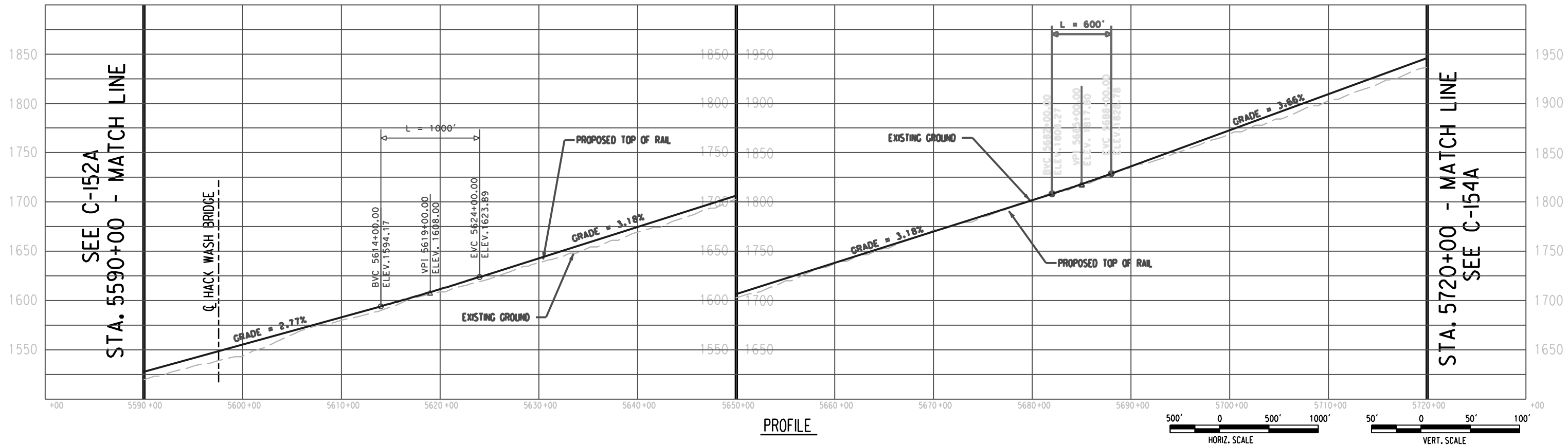
SEE C-152A  
STA. 5590+00 - MATCH LINE



STA. 5720+00 - MATCH LINE  
SEE C-154A



PLAN

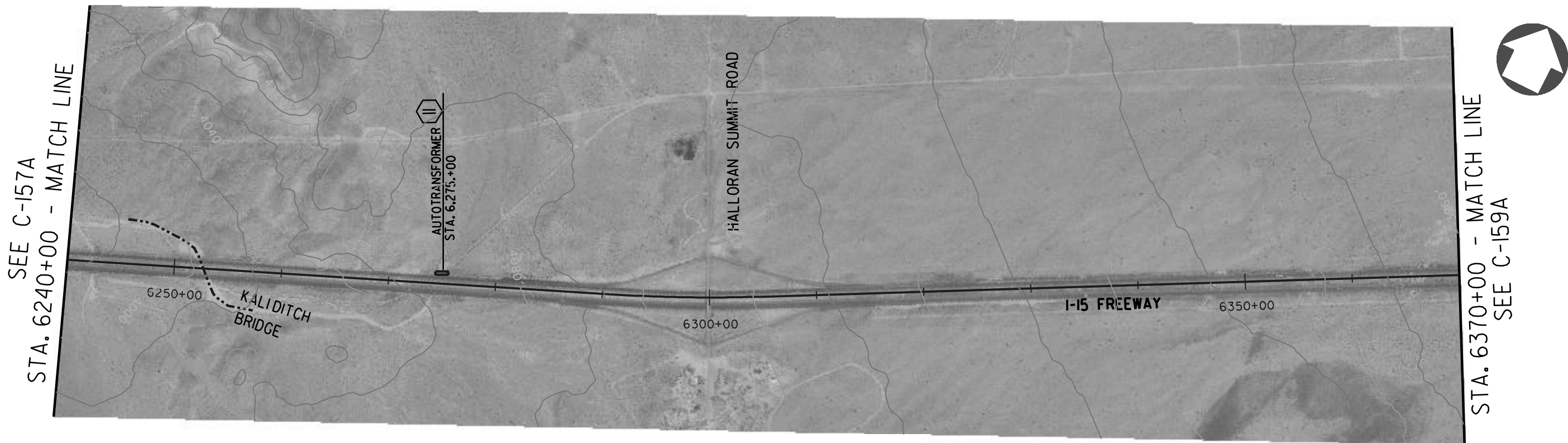


PROFILE

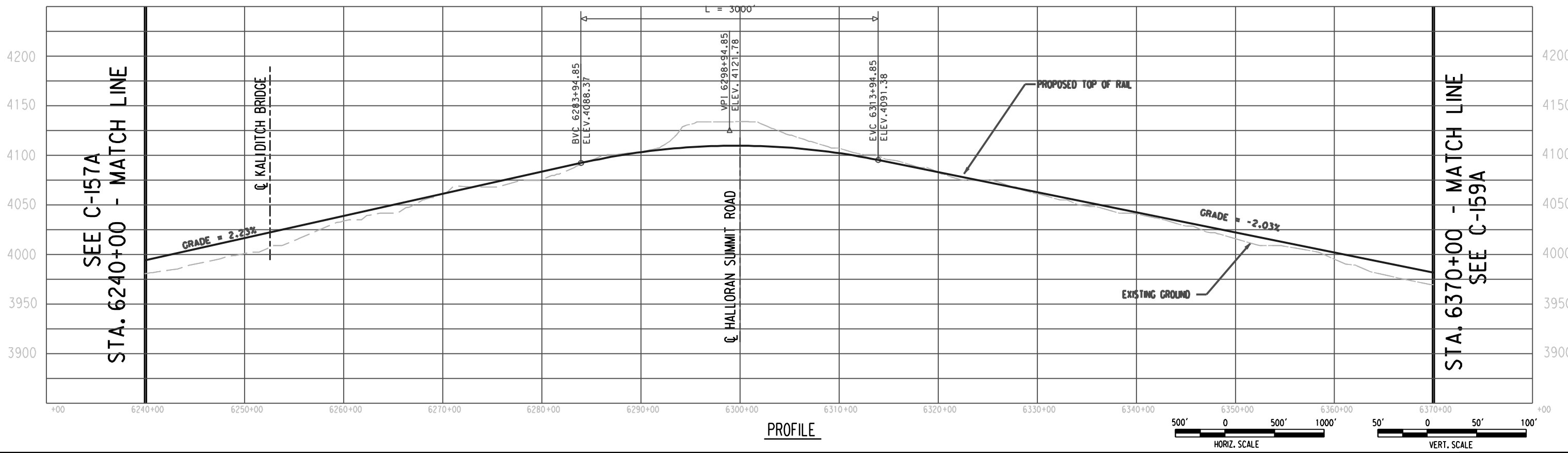


SEE C-152A  
STA. 5590+00 - MATCH LINE

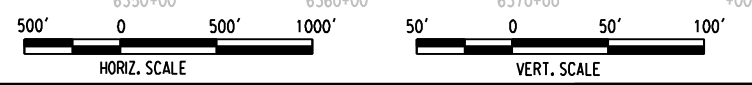
STA. 5720+00 - MATCH LINE  
SEE C-154A



PLAN



PROFILE



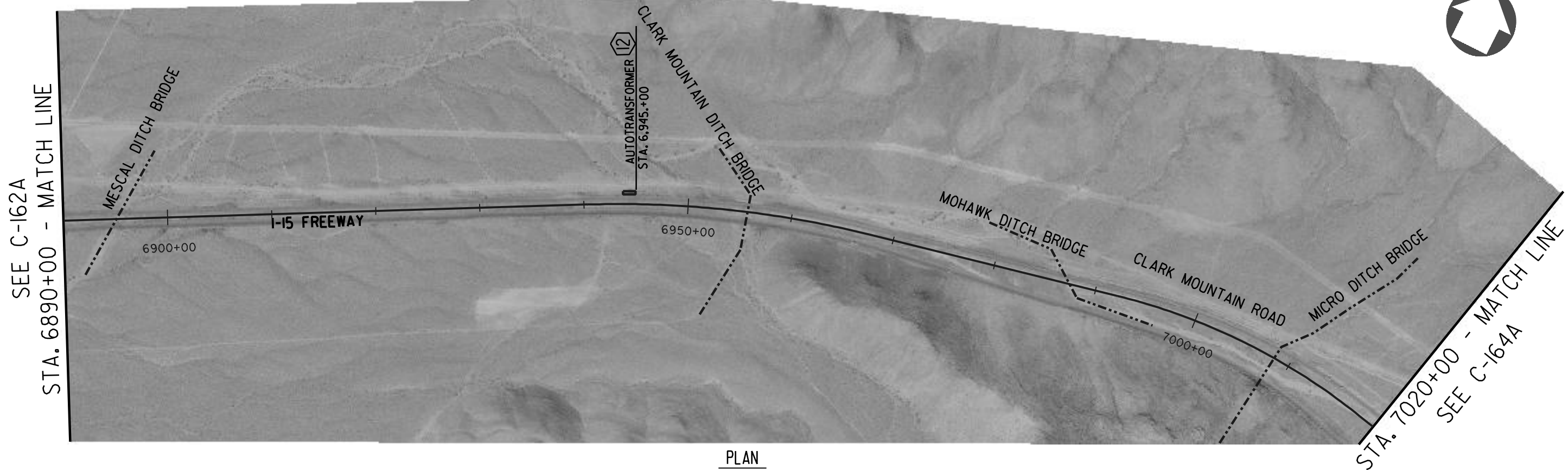
**Korve Engineering**  
 725 SOUTH FIGUEROA STREET, SUITE 2350  
 LOS ANGELES, CA. 90017

CONFIDENTIAL

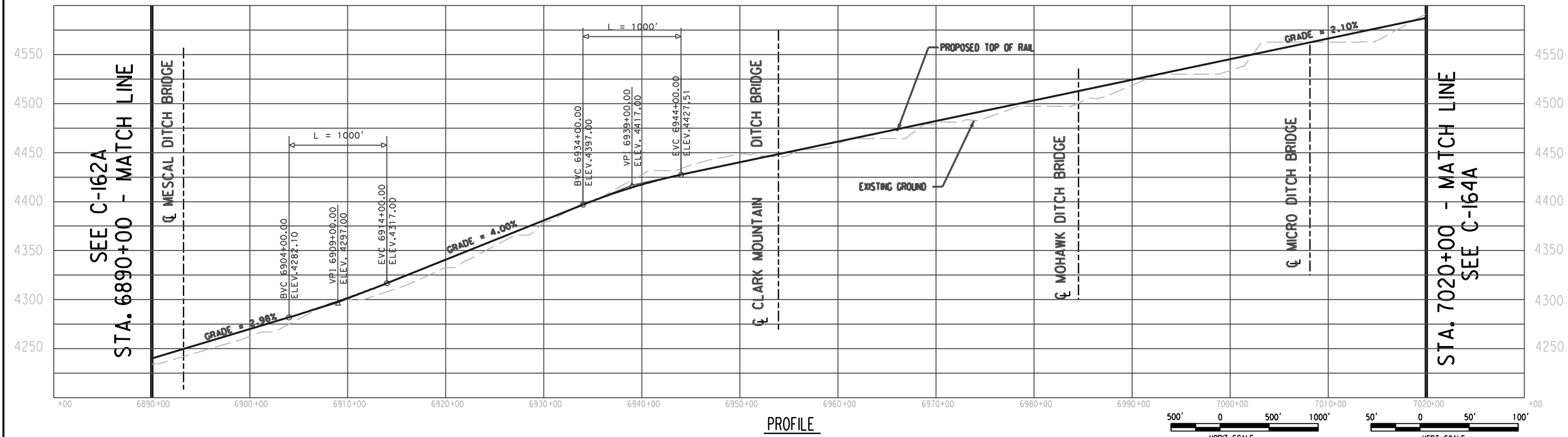
DESERT X PRESS

PRELIMINARY CONCEPTUAL ALIGNMENT  
 EXISTING R/W & LIMITS OF INFLUENCE  
 VICTORVILLE TO LAS VEGAS  
 STA 6240+00 TO STA 6370+00  
 SEGMENT 3, ALTERNATIVE A

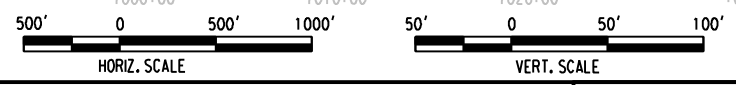
205062G0  
 DRAWING NO. AT-11  
 DATE 06-29-07



PLAN



PROFILE



**Korve Engineering**  
 725 SOUTH FIGUEROA STREET, SUITE 2350  
 LOS ANGELES, CA. 90017

CONFIDENTIAL

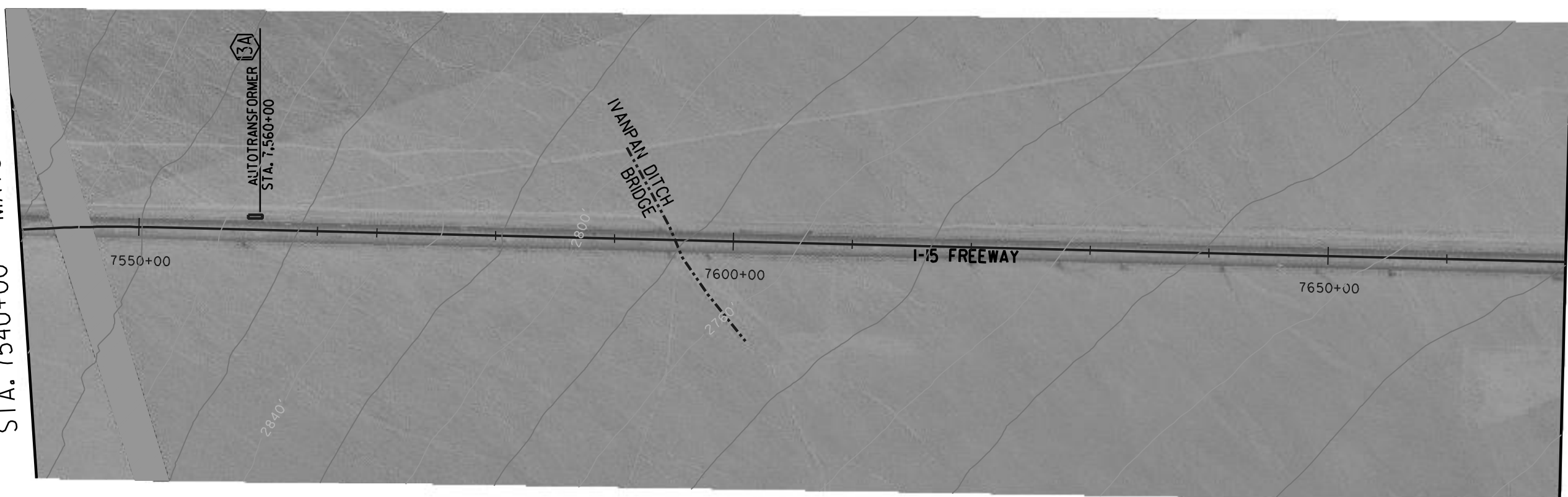
DESERT X PRESS

PRELIMINARY CONCEPTUAL ALIGNMENT  
 EXISTING R/W & LIMITS OF INFLUENCE  
 VICTORVILLE TO LAS VEGAS  
 STA 6890+00 TO STA 7020+00  
 SEGMENT 3, ALTERNATIVE A

205062G0	
DRAWING NO	REV
AT-12	
DATE	06-29-07

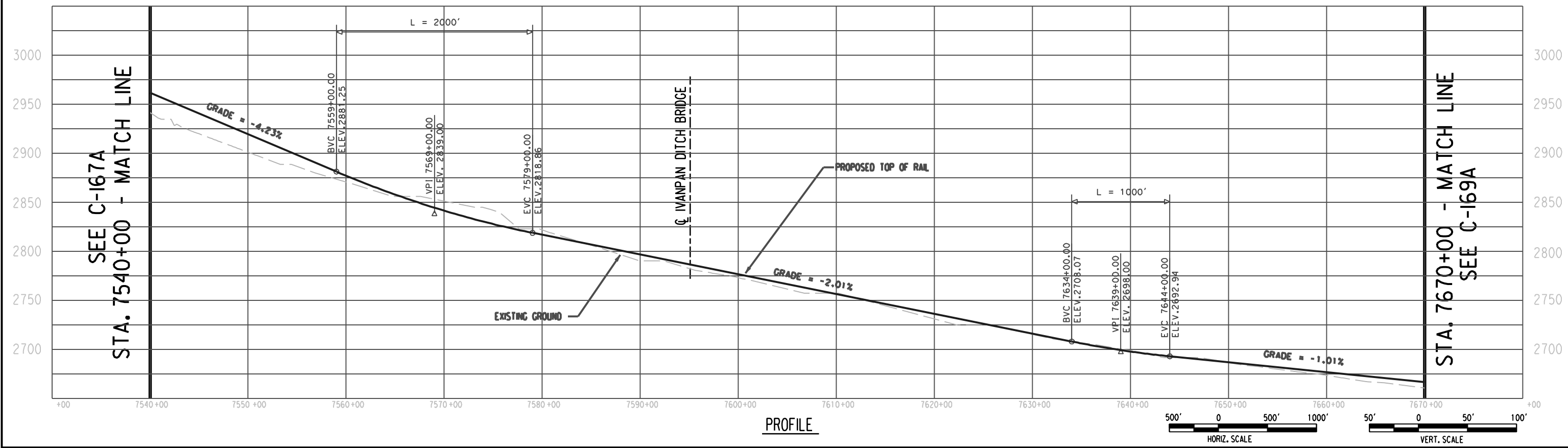


SEE C-167A  
STA. 7540+00 - MATCH LINE



STA. 7670+00 - MATCH LINE  
SEE C-169A

PLAN



PROFILE

**Korve Engineering**  
725 SOUTH FIGUEROA STREET, SUITE 2350  
LOS ANGELES, CA. 90017

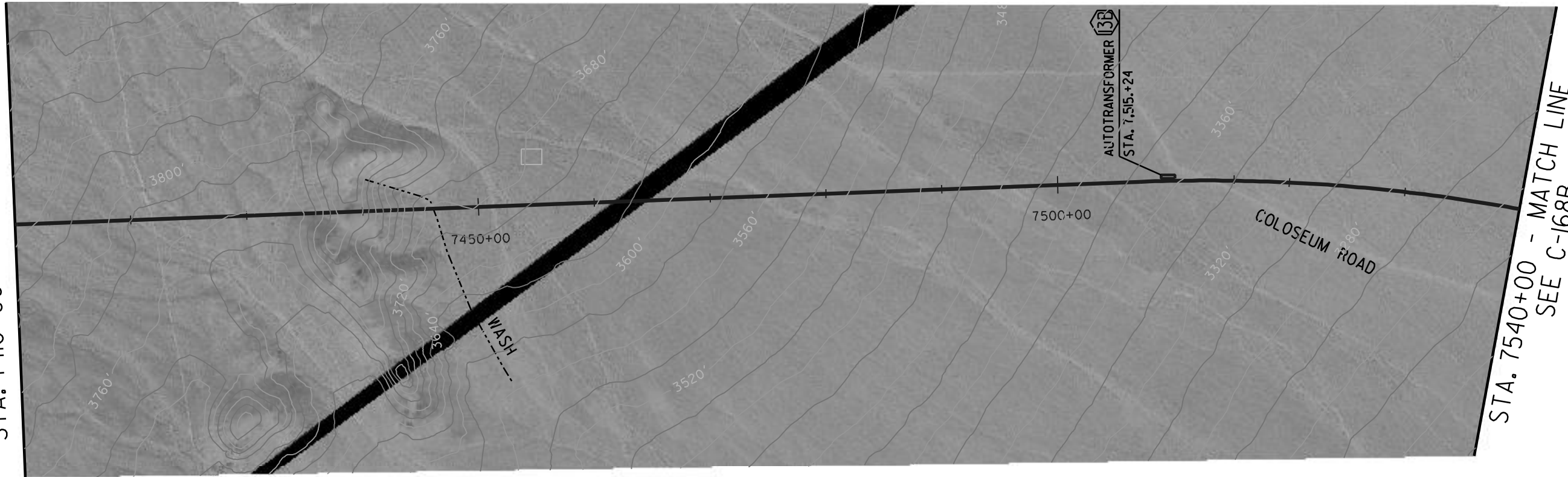
CONFIDENTIAL

DESERT X PRESS

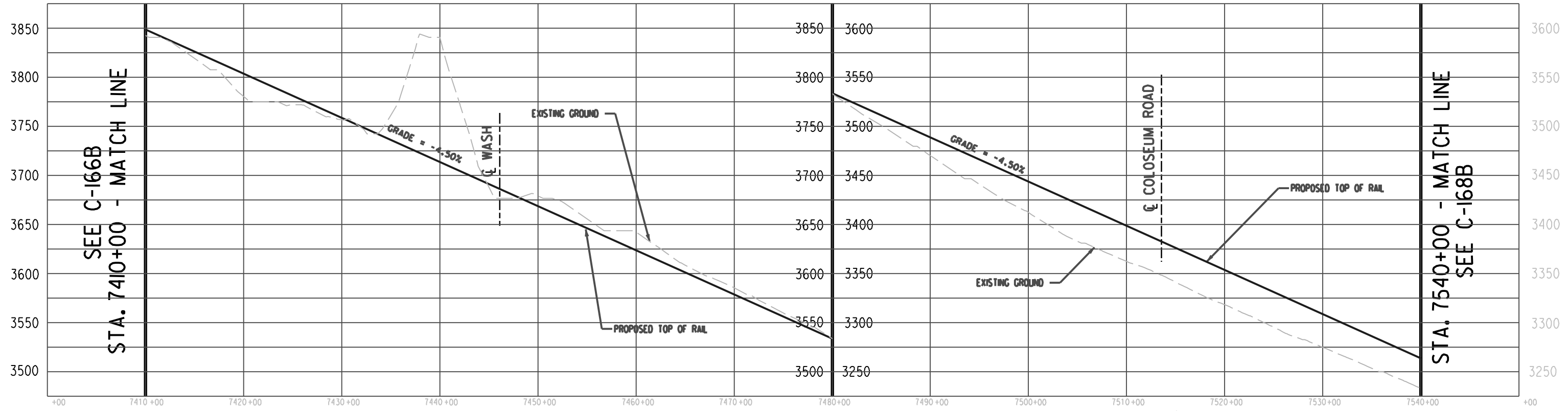
PRELIMINARY CONCEPTUAL ALIGNMENT  
EXISTING R/W & LIMITS OF INFLUENCE  
VICTORVILLE TO LAS VEGAS  
STA 7540+00 TO STA 7670+00  
SEGMENT 4, ALTERNATIVE A

205062G0  
DRAWING NO. AT-13A  
DATE 06-29-07

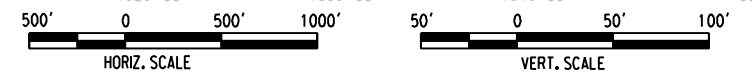
SEE C-166B  
STA. 7410+00 - MATCH LINE



PLAN



PROFILE



**Korve Engineering**  
725 SOUTH FIGUEROA STREET, SUITE 2350  
LOS ANGELES, CA, 90017

CONFIDENTIAL

DESERT X PRESS

PRELIMINARY CONCEPTUAL ALIGNMENT  
EXISTING R/W & LIMITS OF INFLUENCE  
VICTORVILLE TO LAS VEGAS  
STA 7410+00 TO STA 7540+00  
SEGMENT 4, ALTERNATIVE B

205062G0	
DRAWING NO	REV
AT-13B	
DATE	06-29-07

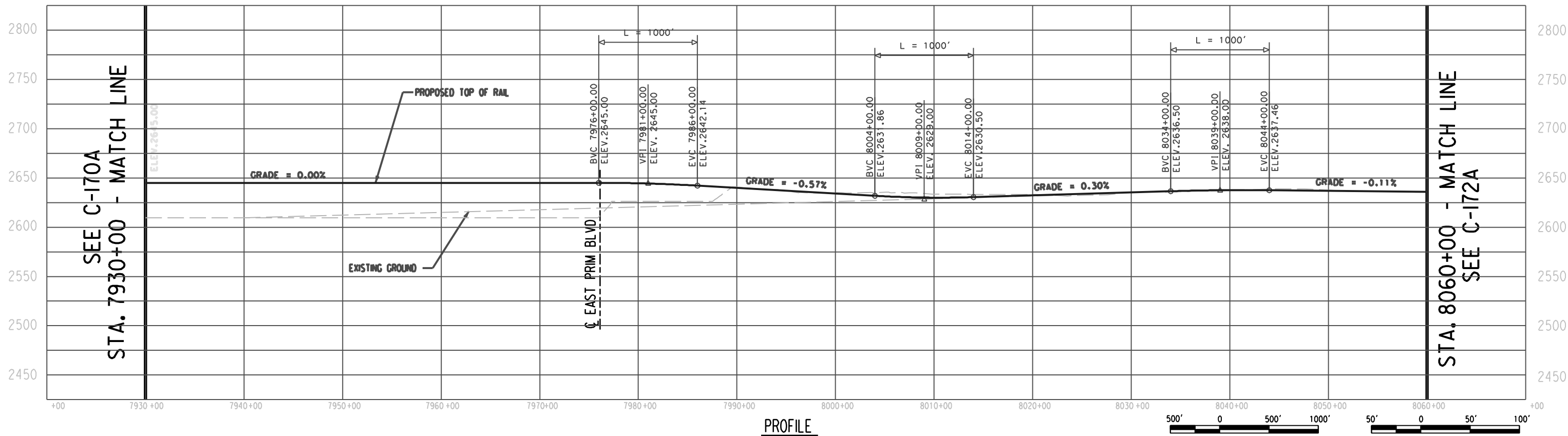


SEE C-170A  
STA. 7930+00 - MATCH LINE

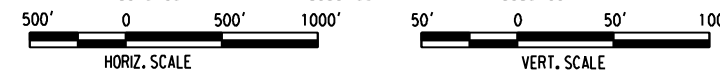


STA. 8060+00 - MATCH LINE  
SEE C-172A

PLAN

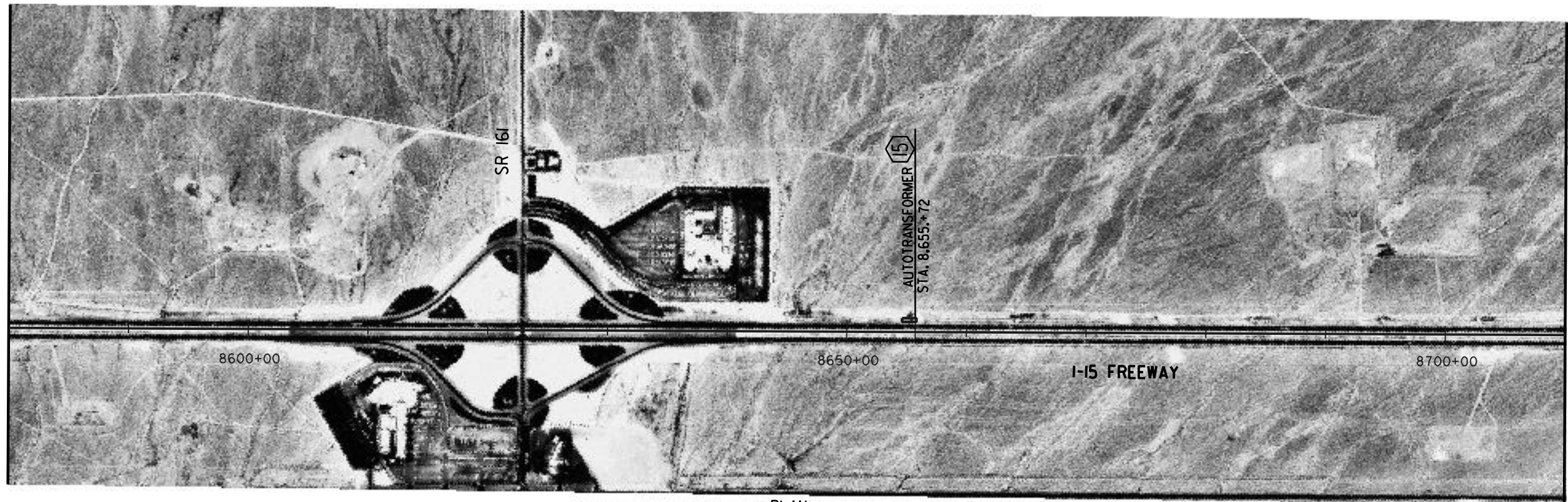


PROFILE



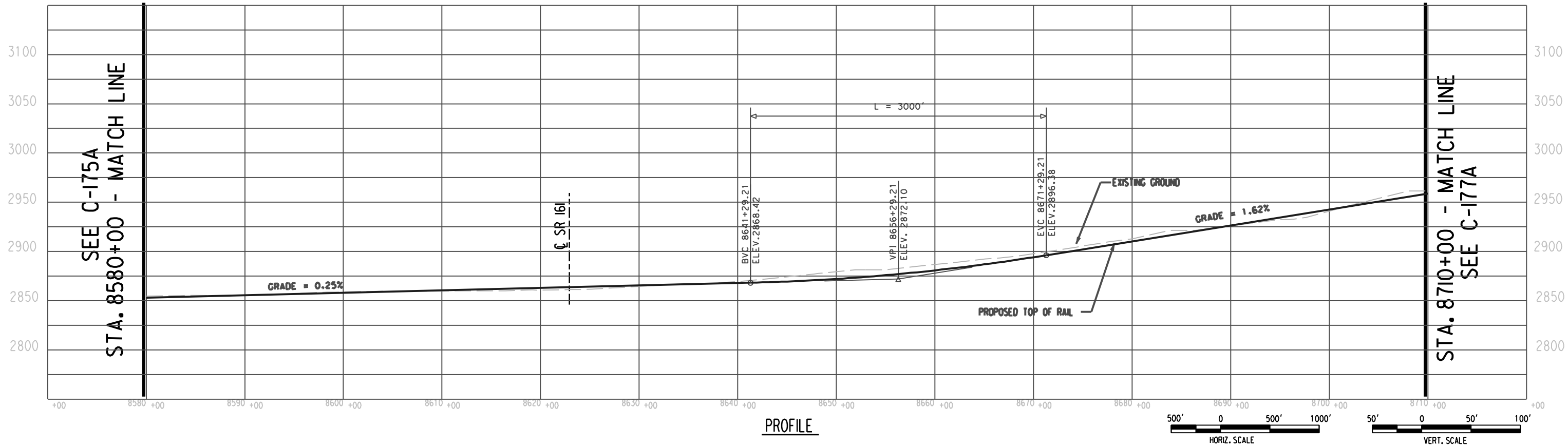


SEE C-175A  
STA. 8580+00 - MATCH LINE

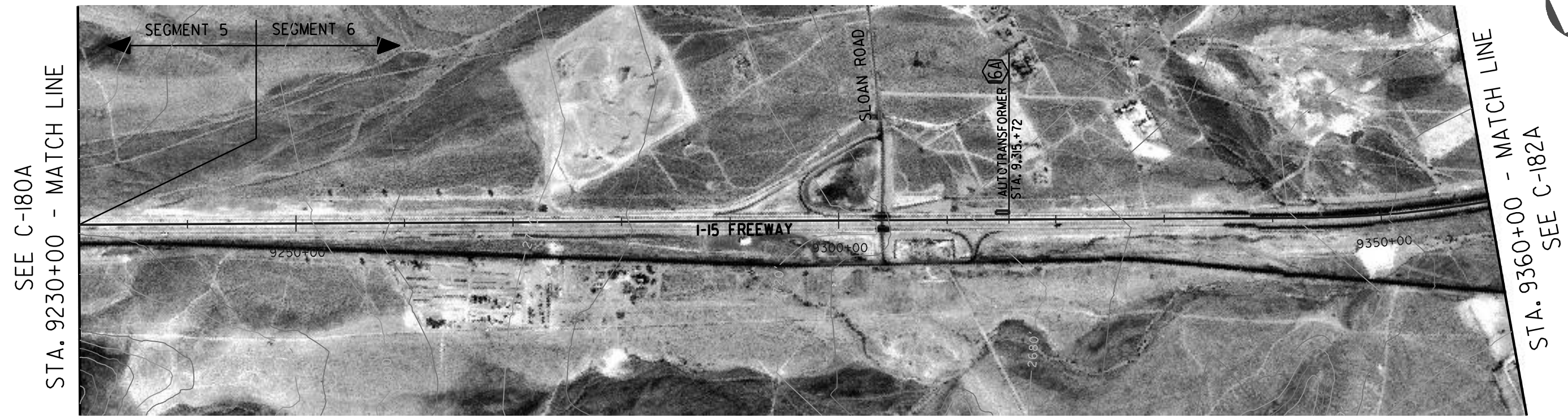


STA. 8710+00 - MATCH LINE  
SEE C-177A

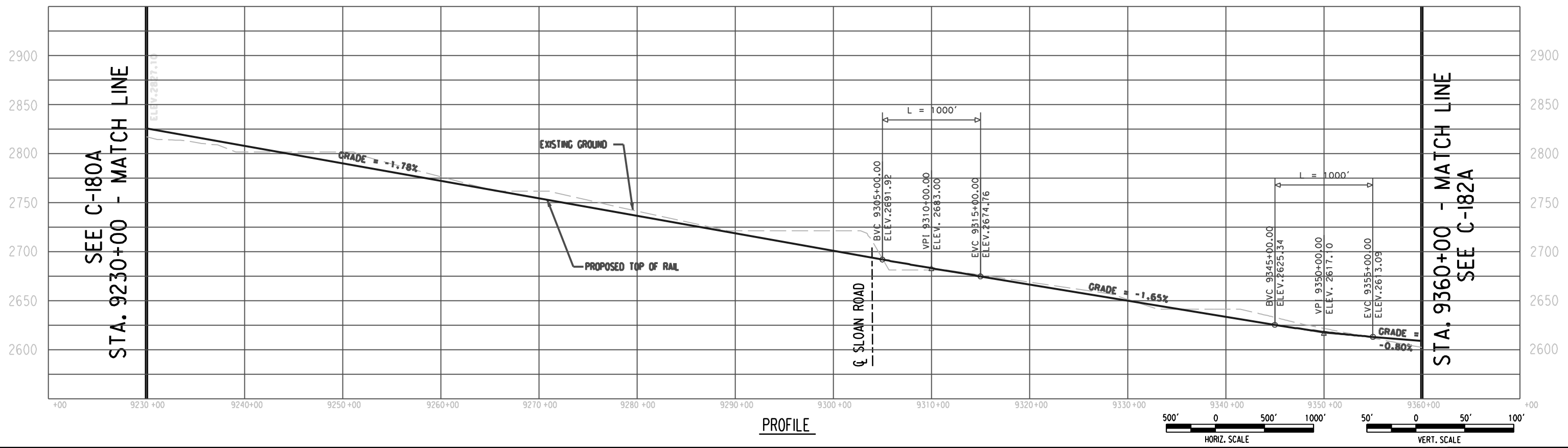
PLAN



PROFILE



PLAN



PROFILE

**Korve Engineering**  
725 SOUTH FIGUEROA STREET, SUITE 2350  
LOS ANGELES, CA. 90017

CONFIDENTIAL

DESERT XPRESS

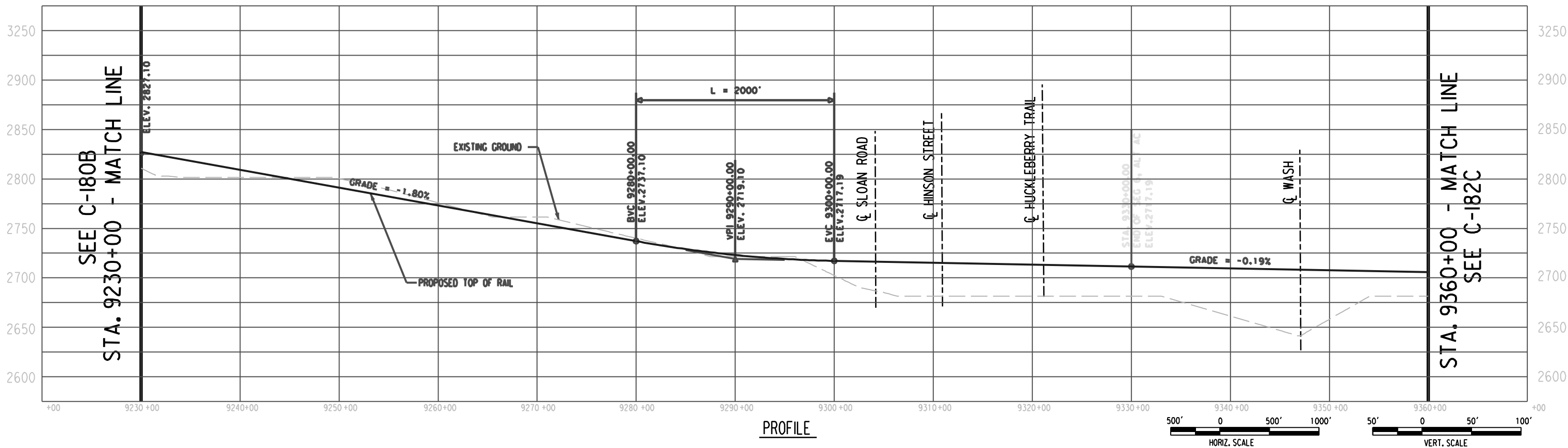
PRELIMINARY CONCEPTUAL ALIGNMENT  
EXISTING R/W & LIMITS OF INFLUENCE  
VICTORVILLE TO LAS VEGAS  
STA 9230+00 TO STA 9360+00  
SEGMENT 6, ALTERNATIVE A

205062G0	
DRAWING NO	REV
AT-16A	
DATE	06-29-07

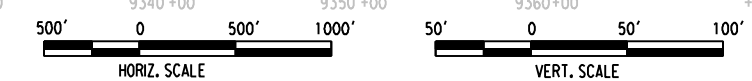
SEE C-180B  
STA. 9230+00 - MATCH LINE

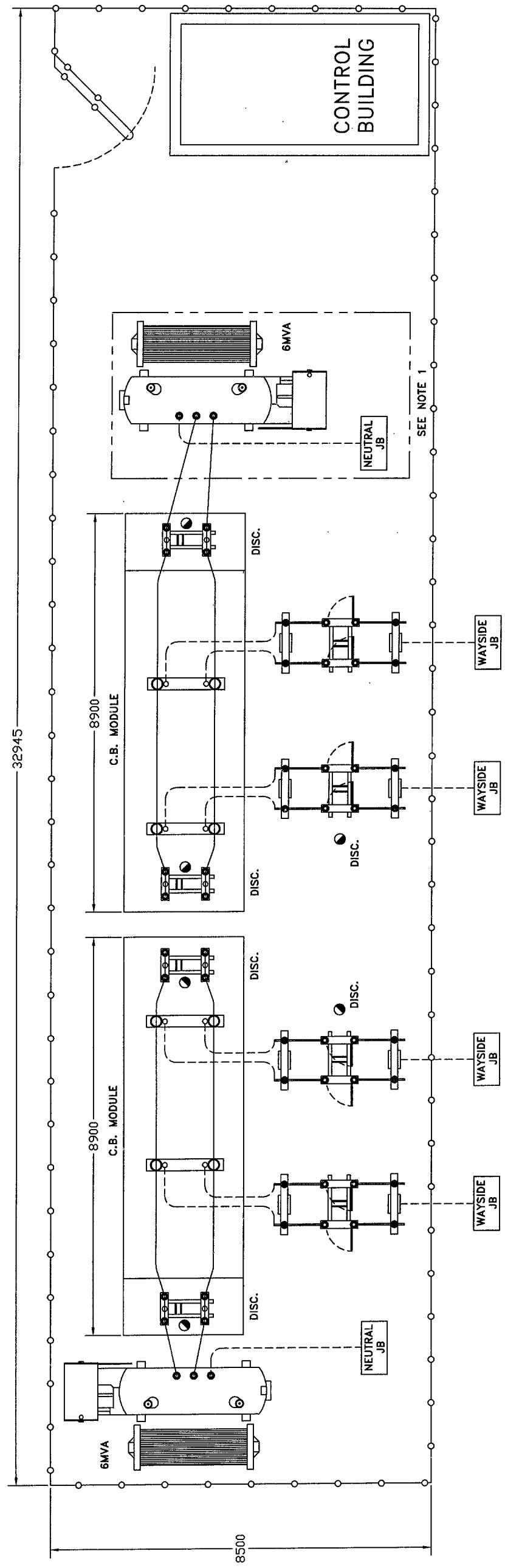


PLAN



PROFILE





NOTES:

- 1- WITHIN THE PHANTOM LINE IS FOR FUTURE INSTALLATION.
- 2- CONCEPTION DESIGN ONLY NOT FOR CONSTRUCTION PURPOSES.
- 3- DIMENSIONS SHOWN IN MILLIMETERS.

LEGEND:

CB-	CIRCUIT BREAKER
JB-	JUNCTION BOX
DISC-	DISCONNECT SWITCH

DESIGNED	CONCU	DESIGNED	CONCU	APPROVED	APPROVED	DESCRIPTION DE LA REVISION / REVISION DESCRIPTION	DATE	RE
POINCE	POINCE (mm)	POINCE (mm)	POINCE (mm)	POINCE (mm)	POINCE (mm)			
<p>CE DOCUMENT ANSI ET SON CONTENU SONT LA PROPRIETE DE BOMBARDIER INC. OU DE SES FILIALES. CE DOCUMENT CONTIENDE L'INFORMATION CONFIDENTIELLE PROTEGEE EN DROIT. TOUTE REPRODUCTION, DISTRIBUTION, UTILISATION OU COMMUNICATION DE CE DOCUMENT DU DE SON CONTENU SANS CONSENTEMENT EXPRESS DE BOMBARDIER INC. EST STRICTEMENT INTERDITE. TOUT MANEUVRE A CETTE REGLE EXPOSE SON AUTEUR AU RISQUE DE SANCTIONS.</p> <p>THIS DOCUMENT AND ITS CONTENTS ARE THE PROPERTY OF BOMBARDIER INC. OR ITS SUBSIDIARIES. THIS DOCUMENT CONTAINS CONFIDENTIAL PROPRIETARY INFORMATION. THE REPRODUCTION, DISTRIBUTION, UTILISATION OR THE COMMUNICATION OF THIS DOCUMENT OR ANY PART THEREOF, WITHOUT EXPRESS AUTHORIZATION IS STRICTLY PROHIBITED. OFFENDERS WILL BE HELD LIABLE FOR THE PAYMENT OF DAMAGES.</p>								
CONCU	DESIGNED	DESIGN ORIGINAL	DESIGN	DATE	DATE	<p><b>BOMBARDIER</b></p> <p>© 2007, Bombardier Inc. ou ses filiales. Tous droits réservés.                  © 2007, Bombardier Inc. or its subsidiaries. All rights reserved.</p>		
DESIGNED	DESIGNED	DESIGNED	DESIGNED	DATE	DATE	<p>ECHELLE / TITLE</p> <p>NTS / DESERT EXPRESS</p> <p>SCALE / TYPICAL AUTOTRANSFORMER LAYOUT</p> <p>FORNAT / MILLIMETRES / DESIGN</p> <p>AI / C806-SWD-0601-0002</p> <p>REVUE / SHEET</p> <p>1 / 1</p>		

**PRELIMINARY**  
 DATE : 2007-01-23