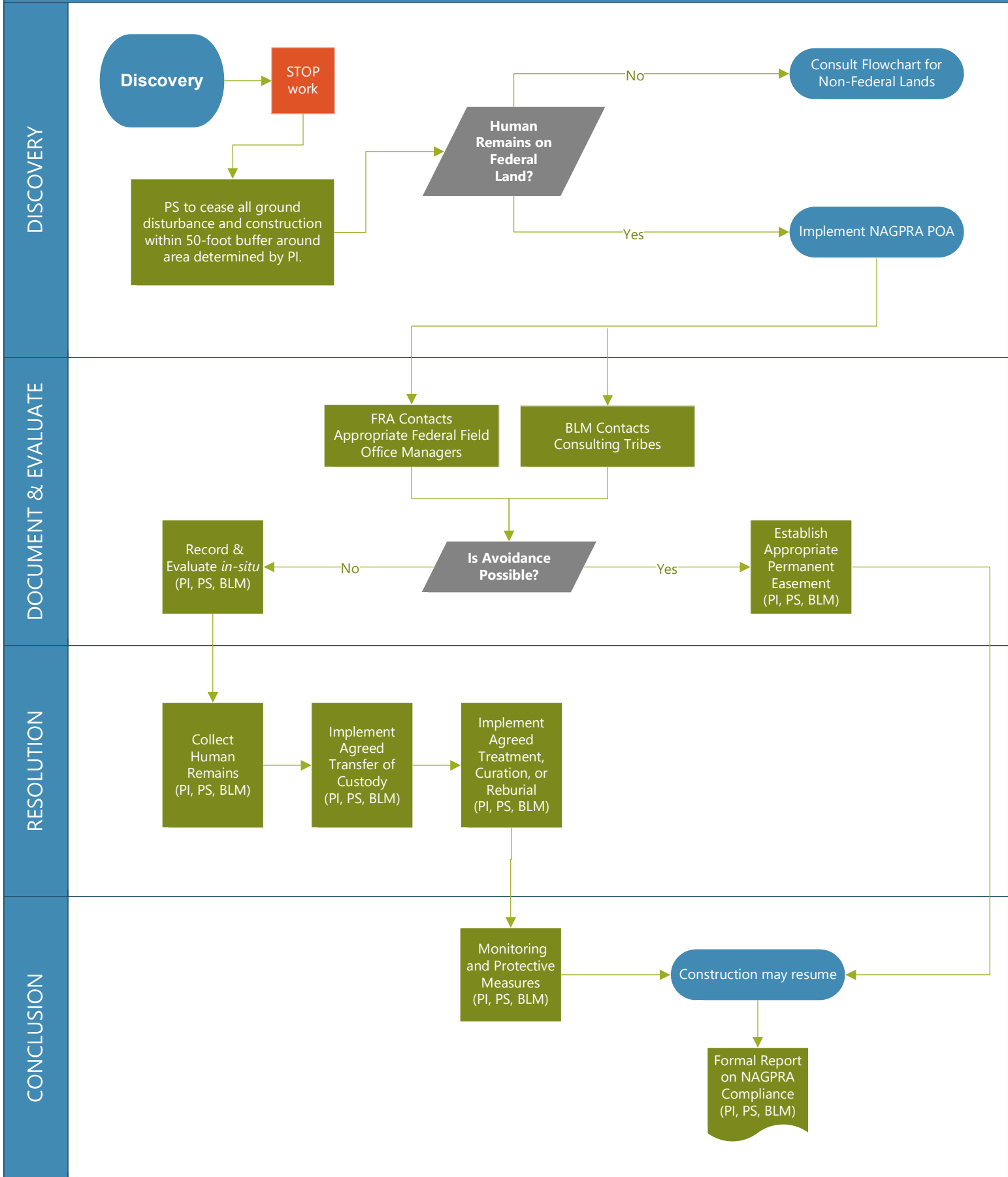


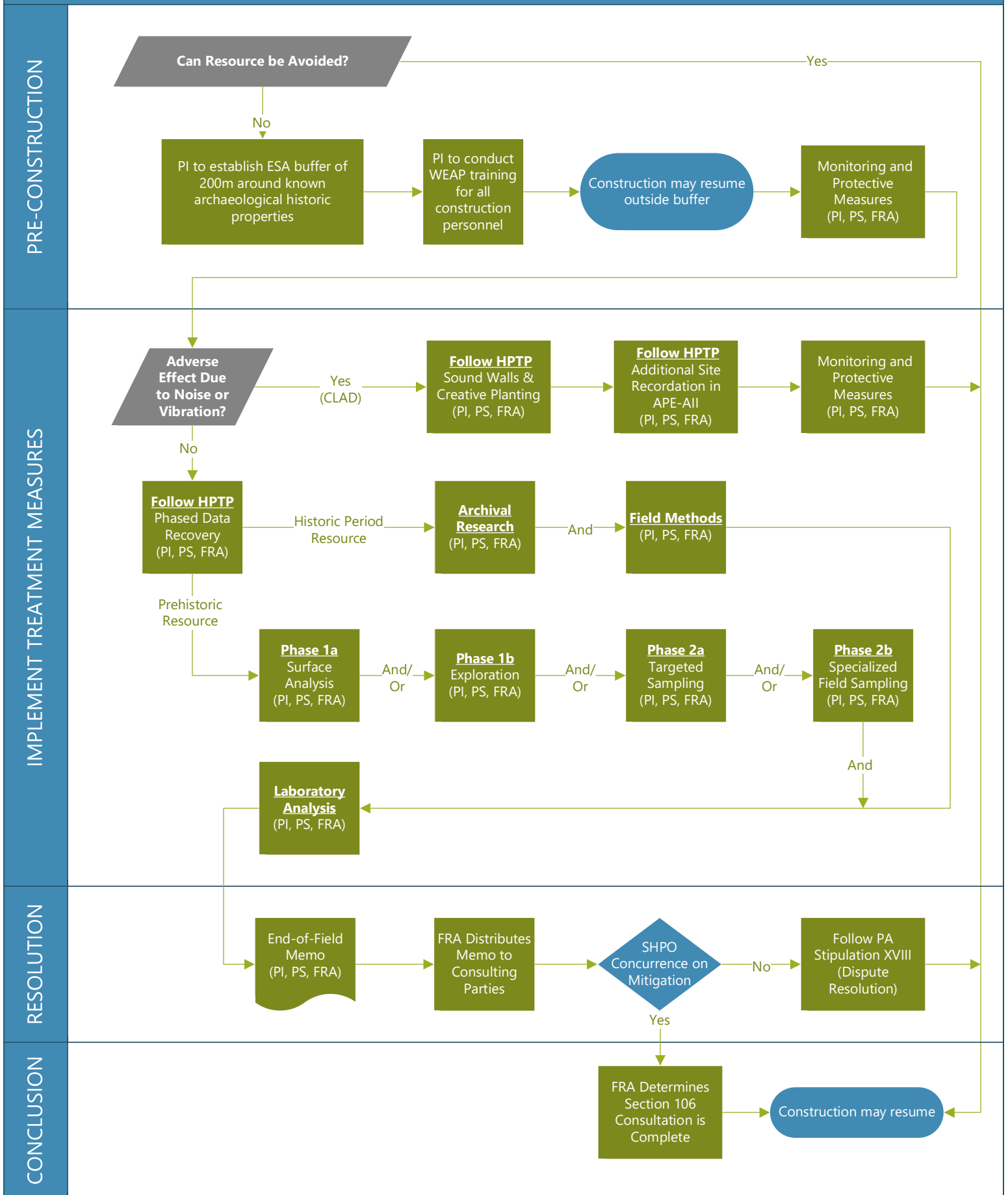
Treatment of Human Remains on Federally-Administered Lands



Brightline – HPTP Flow Chart Key

BLM	Bureau of Land Management
CP	Consulting Party
FRA	Federal Railroad Administration
HPO	Nevada Historic Preservation Office
MLD	Most Likely Descendant
NAGPRA	Native American Graves Protection and Repatriation Act
NAHC	Native American Heritage Commission
NIC	Nevada Indian Commission
PI	Principal Investigator
POA	Plan of Action
PS	Project Sponsor
SHPO	State Historic Preservation Officer

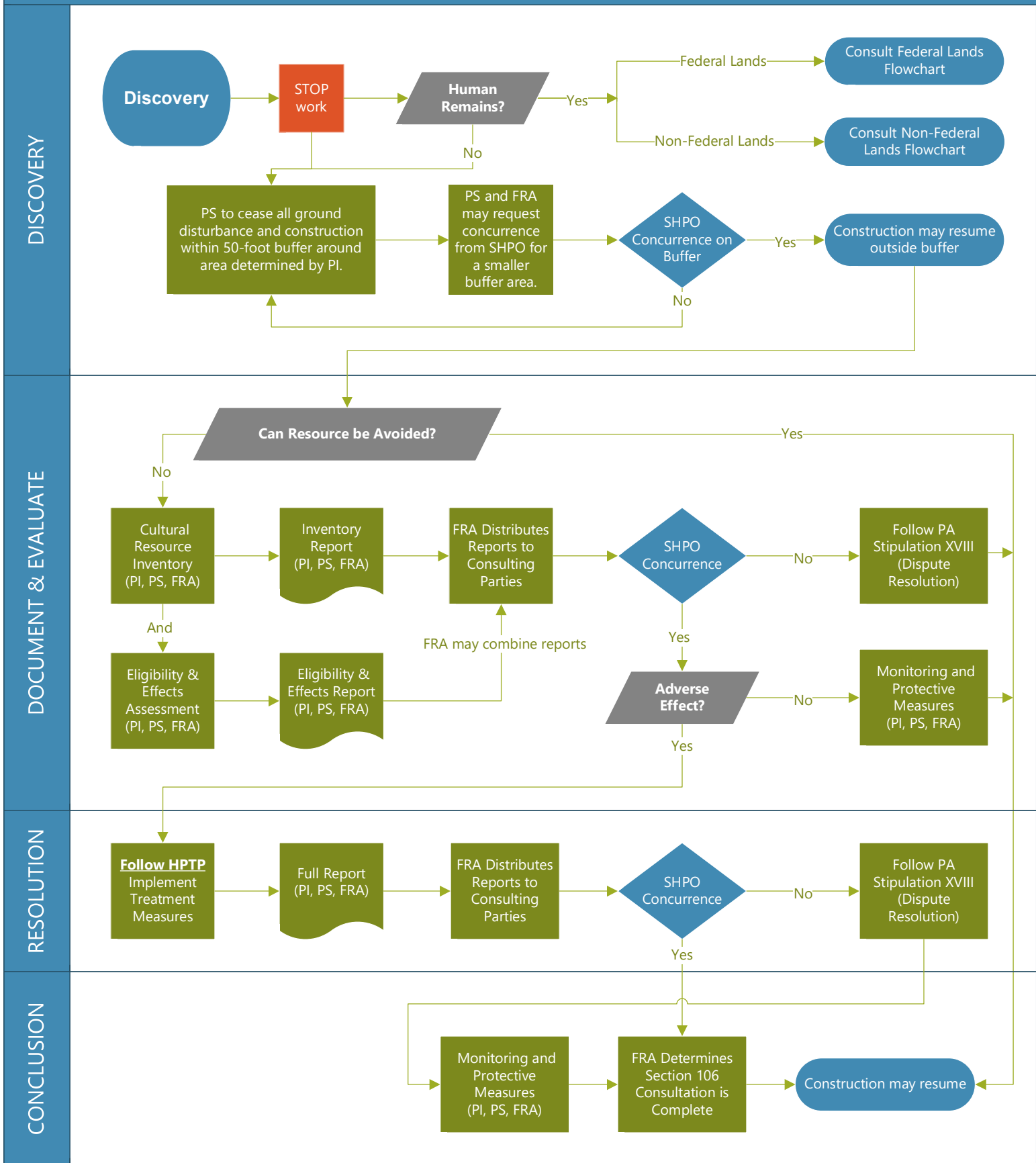
Treatment of Known Resources in Current APE



Brightline – HPTP Flow Chart Key

BLM	Bureau of Land Management
CP	Consulting Party
FRA	Federal Railroad Administration
HPO	Nevada Historic Preservation Office
MLD	Most Likely Descendant
NAGPRA	Native American Graves Protection and Repatriation Act
NAHC	Native American Heritage Commission
NIC	Nevada Indian Commission
PI	Principal Investigator
POA	Plan of Action
PS	Project Sponsor
SHPO	State Historic Preservation Officer

Unanticipated Discovery in Current APE

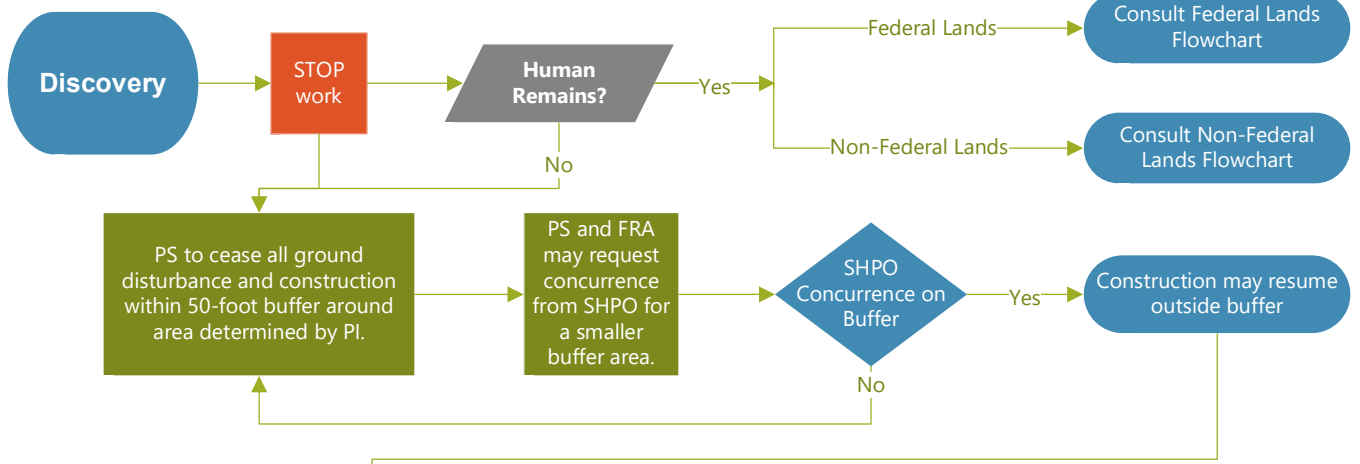


Brightline – HPTP Flow Chart Key

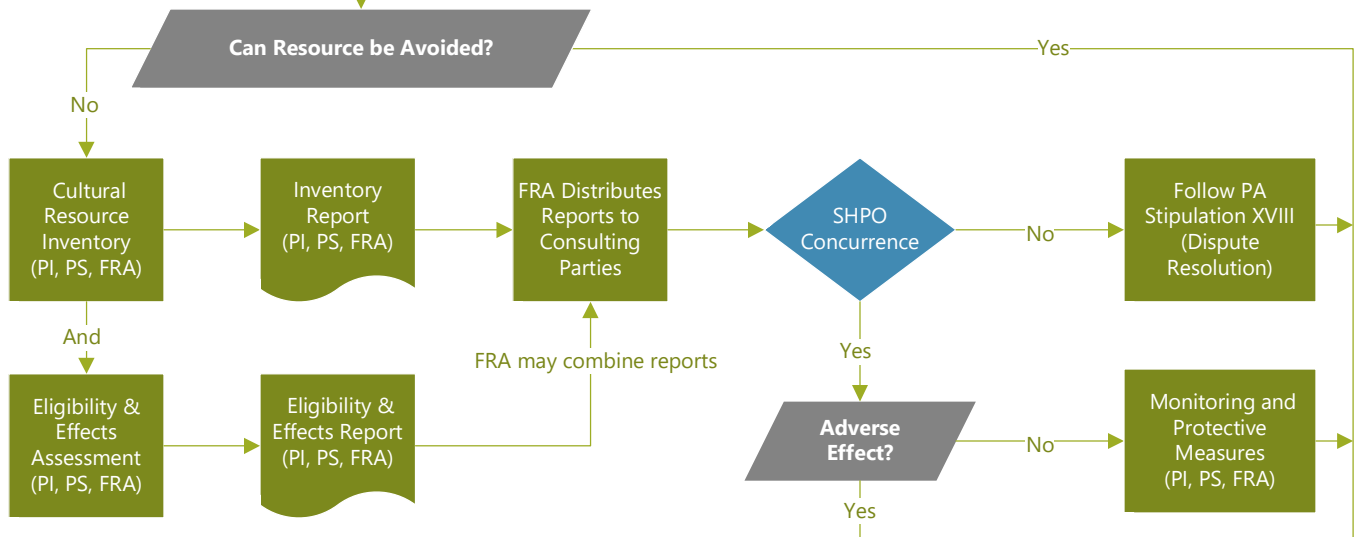
BLM	Bureau of Land Management
CP	Consulting Party
FRA	Federal Railroad Administration
HPO	Nevada Historic Preservation Office
MLD	Most Likely Descendant
NAGPRA	Native American Graves Protection and Repatriation Act
NAHC	Native American Heritage Commission
NIC	Nevada Indian Commission
PI	Principal Investigator
POA	Plan of Action
PS	Project Sponsor
SHPO	State Historic Preservation Officer

Unanticipated Discovery in Expanded APE

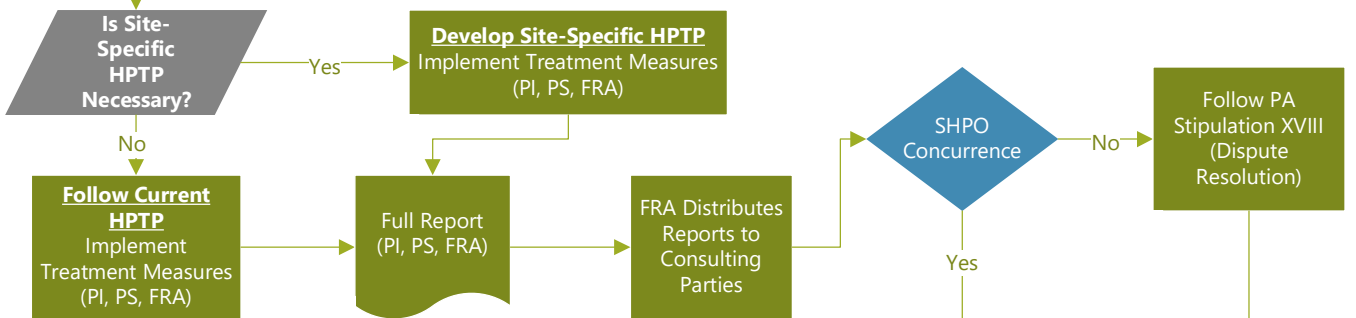
DISCOVERY



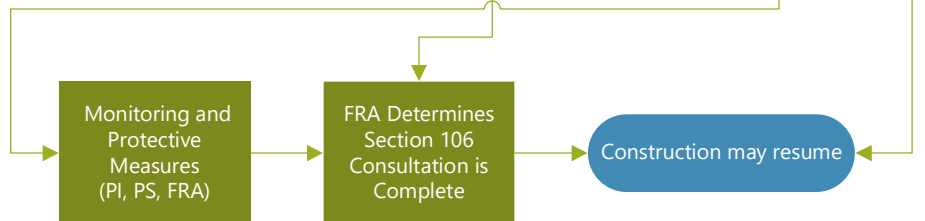
DOCUMENT & EVALUATE



RESOLUTION



CONCLUSION



Brightline – HPTP Flow Chart Key

BLM	Bureau of Land Management
CP	Consulting Party
FRA	Federal Railroad Administration
HPO	Nevada Historic Preservation Office
MLD	Most Likely Descendant
NAGPRA	Native American Graves Protection and Repatriation Act
NAHC	Native American Heritage Commission
NIC	Nevada Indian Commission
PI	Principal Investigator
POA	Plan of Action
PS	Project Sponsor
SHPO	State Historic Preservation Officer