



## SPECIAL EVENT

- 1 **A VERY QUICK TOUR  
OF L.A. AREA ARCHIVES**

## PANEL DISCUSSIONS

- 2 **START YOUR ENGINES:  
HOW L.A. BECAME THE CENTER  
OF CAR CULTURE**
- 3 **CSI LOS ANGELES:  
ARCHIVAL CASE STUDY  
INVESTIGATIONS**
- 4 **WISH YOU WERE HERE:  
LOS ANGELES IN POSTCARDS**
- 5 **SOUTHERN CALIFORNIA  
RANCHOS AND HOMESTEADS**

## LOS ANGELES ARCHIVES BAZAAR

THE STORIES  
AND HISTORY  
OF LOS ANGELES

ALL DAY, ALL IN  
ONE PLACE,  
AT THE 7<sup>TH</sup>  
ANNUAL  
ARCHIVES  
BAZAAR

The 7th-Annual  
Los Angeles Archives Bazaar  
Presented by L.A. as Subject

Saturday, October 27, 2012  
University of Southern California  
Doheny Memorial Library

LAasSUBJECT  
USC

PRESENTED by

**L.A. as SUBJECT**

Southern California history comes alive in exhibits from more than 80 historical collections and archives—including L.A.-area universities, libraries, museums, and community organizations. Browse rare collections, consult with experts, and learn how the region's historical archives have informed new scholarship and creative works. Presented by L.A. as SUBJECT, the bazaar offers a wealth of resources for exploring the stories of Los Angeles. L.A. as SUBJECT—an association of archives and collections hosted by the USC Libraries—is dedicated to documenting the rich history of the Los Angeles region and to improving the visibility, access, and preservation of archives. A rich variety of educational programs about the hidden histories of Los Angeles are scheduled throughout the day.

## EDUCATIONAL SESSION

- 6 **ON THE RECORD:  
GETTING STARTED WITH  
ORAL HISTORY**

## FILM SCREENING

- 7 **EVERYDAY SUNSHINE:  
THE STORY OF  
FISHBONE**

# LOS ANGELES ARCHIVES BAZAAR

Saturday, October 27, 2012  
9:00 a.m. to 5:00 p.m.

## DOHENY MEMORIAL LIBRARY

University of Southern California  
3550 Trousdale Parkway  
Los Angeles, CA 90089

## FREE ADMISSION

Parking is available at Parking Structure X for \$10. Enter campus through Gate 3 at USC McCarthy Way. McCarthy Way is between Jefferson and Exposition Boulevards on Figueroa Street. For maps of the campus, go to [www.usc.edu/maps](http://www.usc.edu/maps). The campus is also accessible via the Metro Expo Line. Stop at either the Jefferson/USC or Expo Park/USC stations.

## CONTACT

For questions, contact Tyson Gaskill at (213) 740-2070 or [gaskill@usc.edu](mailto:gaskill@usc.edu).

## PROGRAMMING HIGHLIGHTS

### SPECIAL EVENT

#### A VERY QUICK TOUR OF LOS ANGELES AREA ARCHIVES

Just as speed dating brings together lonely hearts, this quick-paced series of 5-minute presentations will help connect scholars, students, and history buffs with the archival collections they need. More than a dozen L.A. area Subject members will share one notable item from their archives as a way of introducing their collections. Bring a notepad, watch the presentations, and then head down to the exhibition hall for a second date.

### PANEL DISCUSSIONS

#### START YOUR ENGINES: HOW L.A. BECAME THE CENTER OF CAR CULTURE

Drag races. Drive-thrus. The 405. Detroit may be the car capital of the world, but Los Angeles has long been associated with car culture. Learn about Southern California's special connection with the automobile as panelists Leslie Kendall, curator of the Petersen Automotive Museum, and Ken Berg, an archivist at the Motorsports Education Foundation, discuss the history of motoring in Los Angeles.

#### CSI LOS ANGELES: ARCHIVAL CASE STUDY INVESTIGATIONS

Like the forensic detectives on television, history researchers can be confronted with a baffling number of contradictory sources and dead ends when trying to untangle a mystery. In this discussion, specialists analyze the difficulty in piecing together scanty historical data to tell an electrifying story.

#### WISH YOU WERE HERE: LOS ANGELES IN POSTCARDS

Postcards have been used since the nineteenth century as a way to inform friends of a pleasurable vacation destination. Collectors David Boulé and Melvin Hale discuss how Los Angeles, with its year-round sunny weather, has a long tradition of advertising its charms through this inexpensive form of media.

#### SOUTHERN CALIFORNIA RANCHOS AND HOMESTEADS

In the early nineteenth century, when Los Angeles was just a small pueblo, a number of ranchos populated the Southern California landscape. Paul Spitzer of the Homestead Museum, Carolyn Schoff from Pio Pico State Historic Park, and Steve Iverson of Rancho Los Cerritos talk about the challenges of preserving and interpreting their landmarks for a new generation.

### EDUCATIONAL SESSION

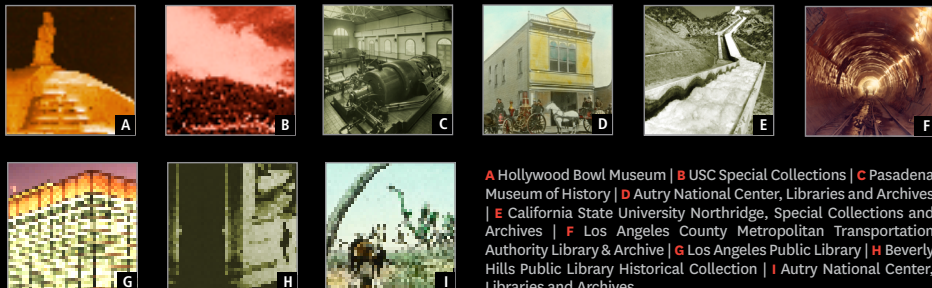
#### ON THE RECORD: GETTING STARTED WITH ORAL HISTORY

This workshop—presented by Natalie M. Fousekis, Director of the Center for Oral and Public History at Cal State Fullerton—will introduce attendees to the process of conducting oral history interviews. Subjects to be covered include preparing for interviews, proper recording equipment, transcription, and the kind of paperwork needed for depositing the results in an archive.

### DOCUMENTARY FILM SCREENING

#### EVERYDAY SUNSHINE: THE STORY OF FISHBONE

In the early 1980s, Fishbone rose from its Los Angeles roots to become one of the most original bands of its time. Produced and directed by Lev Anderson and Chris Metzler, this documentary film tells the story of the band that demolished the walls of genre and challenged the racial stereotypes and political order of the music industry—and the nation.



A Hollywood Bowl Museum | B USC Special Collections | C Pasadena Museum of History | D Autry National Center, Libraries and Archives | E California State University Northridge, Special Collections and Archives | F Los Angeles County Metropolitan Transportation Authority Library & Archive | G Los Angeles Public Library | H Beverly Hills Public Library Historical Collection | I Autry National Center, Libraries and Archives

## LOS ANGELES ARCHIVES BAZAAR EXHIBITORS

- ACADEMY FILM ARCHIVE
- ASSOCIATED HISTORICAL SOCIETIES OF LOS ANGELES COUNTY
- AUTRY NATIONAL CENTER, LIBRARIES AND ARCHIVES
- AYN RAND ARCHIVES
- THE BANNING MUSEUM
- THE BASEBALL RELIQUARY
- BEVERLY HILLS PUBLIC LIBRARY HISTORICAL COLLECTION
- BOYLE HEIGHTS HISTORICAL SOCIETY
- CAL HUMANITIES
- CALIFORNIA AFRICAN AMERICAN MUSEUM
- CALIFORNIA HISTORICAL SOCIETY
- CALIFORNIA STATE UNIVERSITY CHANNEL ISLANDS, JOHN SPOOR BROOME LIBRARY
- CALIFORNIA STATE UNIVERSITY DOMINGUEZ HILLS, ARCHIVES AND SPECIAL COLLECTIONS
- CALIFORNIA STATE UNIVERSITY FULLERTON, CENTER FOR ORAL AND PUBLIC HISTORY
- CALIFORNIA STATE UNIVERSITY NORTHRIDGE, INSTITUTE FOR ARTS AND MEDIA
- CALIFORNIA STATE UNIVERSITY NORTHRIDGE, OVIATT LIBRARY, SPECIAL COLLECTIONS AND ARCHIVES
- CENTER FOR THE STUDY OF POLITICAL GRAPHICS
- CHAPMAN UNIVERSITY, FRANK MT. PLEASANT LIBRARY OF SPECIAL COLLECTIONS AND ARCHIVES
- CHINESE HISTORICAL SOCIETY OF SOUTHERN CALIFORNIA
- CLAREMONT COLLEGES SPECIAL COLLECTIONS
- CONFERENCE OF CALIFORNIA HISTORICAL SOCIETIES
- CULVER CITY HISTORICAL SOCIETY
- DAVID BOULÉ COLLECTION: THE ORANGE AND THE MYTH OF CALIFORNIA
- DOMINGUEZ RANCHO ADOBE MUSEUM
- EAGLE ROCK VALLEY HISTORICAL SOCIETY
- EL PUEBLO DE LOS ANGELES HISTORICAL MONUMENT
- FILIPINO AMERICAN LIBRARY
- FRIENDS OF GREYSTONE
- GARY WATKINS COLLECTION
- GAZIN CONTEMPORARY ARCHIVE
- THE GETTY RESEARCH INSTITUTE
- GLENDALE PUBLIC LIBRARY
- THE GO FOR BROKE NATIONAL EDUCATION CENTER
- HISTORICAL SOCIETY OF CENTINELA VALLEY
- HOMESTEAD MUSEUM
- JAPANESE AMERICAN NATIONAL MUSEUM
- JEFFREY STANTON: VENICE HISTORY
- LAB4 FOUNDATION SPORTS LIBRARY
- LACMA BALCH ART RESEARCH LIBRARY
- LA SEÑORA RESEARCH INSTITUTE
- LITTLE TOKYO HISTORICAL SOCIETY
- LOS ANGELES CITY ARCHIVES
- LOS ANGELES CITY HISTORICAL SOCIETY
- LOS ANGELES COUNTY METROPOLITAN TRANSPORTATION AUTHORITY LIBRARY AND ARCHIVE
- LOS ANGELES COUNTY PUBLIC LIBRARY RESOURCE CENTERS
- LOS ANGELES HARBOR DEPARTMENT HISTORICAL ARCHIVES
- LOS ANGELES PUBLIC LIBRARY
- LOS ANGELES UNIFIED SCHOOL DISTRICT, ART AND ARTIFACT COLLECTION
- LOYOLA HIGH SCHOOL
- LOYOLA MARYMOUNT UNIVERSITY, DEPARTMENT OF ARCHIVES AND SPECIAL COLLECTIONS
- LUNA IMAGING
- MAYME A. CLAYTON LIBRARY AND MUSEUM
- THE MUSEUM OF THE SAN FERNANDO VALLEY
- NATURAL HISTORY MUSEUM OF LOS ANGELES COUNTY, MUSEUM ARCHIVES
- NATURAL HISTORY MUSEUM OF LOS ANGELES COUNTY, SEAVER CENTER FOR WESTERN HISTORY RESEARCH
- OCCIDENTAL COLLEGE LIBRARY
- ONE NATIONAL GAY AND LESBIAN ARCHIVES
- ORANGE COUNTY ARCHIVES
- ORANGE EMPIRE RAILWAY MUSEUM
- PACIFIC PALISADES HISTORICAL SOCIETY
- PEPPERDINE UNIVERSITY, SPECIAL COLLECTIONS AND UNIVERSITY ARCHIVES
- POINT FERMIN LIGHTHOUSE
- RONALD REAGAN PRESIDENTIAL LIBRARY AND MUSEUM
- ROSE HILLS: FIRST COMMUNITY IN LOS ANGELES
- SANTA MONICA PUBLIC LIBRARY
- SOCIETY OF CALIFORNIA ARCHIVISTS
- SOUTHERN CALIFORNIA GENEALOGICAL SOCIETY AND LIBRARY
- THE STUDIO FOR SOUTHERN CALIFORNIA HISTORY
- UC IRVINE SPECIAL COLLECTIONS AND ARCHIVES
- UCLA ETHNOMUSICOLOGY ARCHIVE
- UCLA FILM AND TELEVISION ARCHIVE
- UCLA LIBRARY SPECIAL COLLECTIONS
- UCLA WILLIAM ANDREWS CLARK MEMORIAL LIBRARY
- USC DIGITAL LIBRARY
- USC LIBRARIES SPECIAL COLLECTIONS
- VENICE HERITAGE MUSEUM
- WALLY G. SHIDLER HISTORICAL COLLECTION OF SOUTHERN CALIFORNIA EPHEMERA
- WRITERS GUILD FOUNDATION LIBRARY AND ARCHIVE

List of exhibitors current at time of printing

