

# **On-Road Remote Sensing of Automobile Emissions in the Denver Area: Year 3**

**Sajal S. Pokharel, Gary A. Bishop and Donald H. Stedman**

**Department of Chemistry and Biochemistry  
University of Denver  
Denver, CO 80208**

**January 2002**

**Prepared for:**

**Coordinating Research Council, Inc.  
3650 Mansell Road, Suite 140  
Alpharetta, Georgia 30022  
CRC Project No. E-23-4**

## EXECUTIVE SUMMARY

The University of Denver has completed the third year of a multi-year remote sensing study in the Denver area. The remote sensor used in this study is capable of measuring the ratios of CO, HC and NO to CO<sub>2</sub> in motor vehicle exhaust. From these ratios, we calculate the percent concentrations of CO, CO<sub>2</sub>, HC and NO in the exhaust that would be observed by a tailpipe probe, corrected for water and excess oxygen not involved in combustion. Mass emissions per mass or volume of fuel can also be determined. The system used in this study was configured to determine the speed and acceleration of the vehicle, and was accompanied by a video system to record license plates.

Measurements were conducted on 3 business days in early January of 2001 in Denver. The measurement site was the interchange ramp from northbound I-25 to westbound 6<sup>th</sup> Avenue in central Denver. A database was compiled containing 21,042 records for which the State of Colorado provided make and model year information. Of these records 21,021 contained valid measurements for CO and CO<sub>2</sub>, and 20,361 records contained valid measurements for HC and NO as well. The database, along with earlier databases and reports, can be found at [www.feat.biochem.du.edu](http://www.feat.biochem.du.edu).

The mean CO, HC and NO emissions respectively for the fleet measured in this study were 0.34%, 112 ppm (offset adjusted – see below) and 483 ppm. These values are somewhat lower than the mean emissions for fleets measured by the University of Denver at the same site in the winters of 1996 and 1997, as part of a separate study, and in 1999 and 2000 as part of the current CRC study. This year's HC readings seem to contain a negative offset such that the average HC of the cleanest make and model years are negative. Comparisons include removal of this negative offset. The measured lower emissions can be attributed to the current fleet consisting of more modern vehicles with advanced emissions control systems.

As expected, the fleet emissions observed at the site in Denver exhibited a skewed distribution, with most of the total emissions contributed by a relatively small percentage of the vehicles. For example, the cleanest 91% of the fleet is responsible for only 30% of CO emissions. This skewed distribution was also seen in previous studies at the site.

Using vehicle specific power, it was possible to adjust the emissions of the vehicle fleet measured in 2001 to match the vehicle driving patterns of the fleet measured in 1999 and 2000. After doing so, it was seen that the CO and HC emissions of the current year are still considerably lower than the previous years. VSP adjusted average NO emissions are higher than previous.

A model year adjustment was applied to a fleet of specific model year vehicles to track deterioration. The analysis indicated continued deterioration of model years measured in 1999. Emissions of specific vehicles measured during all three years indicated cleaner vehicles tend to remain in the fleet. Thus, the decreases in total fleet average emissions of CO and HC seen during the current measurements were at least partially due to fleet turnover.

Tracking of model year fleets through five measurements in six years (including three years of this study) showed that the rate of emissions deterioration increases significantly

after the vehicle has aged several years. An analysis of high emitting vehicles showed that there is considerable overlap of CO and HC high emitters, for instance 3.6% of the fleet emit 27% of the total CO and 28% of the total HC. The noise in the CO and NO measurements were determined to be minimal, while noise in the HC channel was somewhat significant.

Comparison of RSD data with state IM data continued to show excellent correlations when emissions are converted to common units (g/kg of fuel) and averaged by model year. A look at on-road emissions of vehicles that failed IM in the past two years revealed that a significant portion of the emission reduction induced by the IM program is temporary.

## INTRODUCTION

Many cities in the United States are in violation of the air quality standards established by the Environmental Protection Agency (EPA). Carbon monoxide (CO) levels become elevated primarily due to direct emission of the gas, and ground-level ozone, a major component of urban smog, is produced by the photochemical reaction of nitrogen oxides (NO<sub>x</sub>) and hydrocarbons (HC). As of 1998, on-road vehicles were estimated to be the single largest source for the major atmospheric pollutants, contributing 60% of the CO, 44% of the HC, and 31% of the NO<sub>x</sub> to the national emission inventory.<sup>1</sup>

According to Heywood,<sup>2</sup> carbon monoxide emissions from automobiles are at a maximum when the air/fuel ratio is rich of stoichiometric, and are caused solely by a lack of adequate air for complete combustion. Hydrocarbon emissions are also maximized with a rich air/fuel mixture, but are slightly more complex. When ignition occurs in the combustion chamber, the flame front cannot propagate within approximately one millimeter of the relatively cold cylinder wall. This results in a quench layer of unburned fuel mixture on the cylinder wall and in crevices, which is scraped off by the rising piston and sent out the exhaust manifold. With a rich air/fuel mixture, this quench layer simply becomes more concentrated in HC, and thus more HC is sent out the exhaust manifold by the rising piston. There is also the possibility of increased HC emissions with an extremely lean air/fuel mixture when a misfire occurs and an entire cylinder of unburned fuel mixture is emitted into the exhaust manifold. Nitric oxide (NO) emissions are maximized at high temperatures when the air/fuel mixture is slightly lean of stoichiometric, and are limited during rich combustion by a lack of excess oxygen and during extremely lean combustion by low flame temperatures. In most vehicles, practically all of the on-road NO<sub>x</sub> is emitted in the form of NO.<sup>2</sup> Properly operating modern vehicles with three-way catalysts are capable of partially (or completely) converting engine-out CO, HC and NO emissions to CO<sub>2</sub>, H<sub>2</sub>O and N<sub>2</sub>.<sup>2</sup>

Control measures to decrease mobile source emissions in non-attainment areas include inspection and maintenance (I/M) programs, oxygenated fuel mandates, and transportation control measures, but the effectiveness of these measures remains questionable. Many areas remain in non-attainment, and with the new 8-hour ozone standards introduced by the EPA in 1997, many locations still violating the standard may have great difficulty reaching attainment.<sup>3</sup>

The remote sensor used in this study was developed at the University of Denver for measuring the pollutants in motor vehicle exhaust, and has previously been described in the literature.<sup>4,5</sup> The instrument consists of a non-dispersive infrared (IR) component for detecting carbon monoxide, carbon dioxide (CO<sub>2</sub>) and hydrocarbons, and a dispersive ultraviolet (UV) spectrometer for measuring nitric oxide. The source and detector units are positioned on opposite sides of the road in a bi-static arrangement. Collinear beams of IR and UV light are passed across the roadway into the IR detection unit, and are then focused onto a dichroic beam splitter, which serves to separate the beams into their IR and UV components. The IR light is then passed onto a spinning polygon mirror that spreads the light across the four infrared detectors: CO, CO<sub>2</sub>, HC and reference.

The UV light is reflected off the surface of the beam splitter and is focused into the end of a quartz fiber-optic cable, which transmits the light to an ultraviolet spectrometer. The UV unit is then capable of quantifying nitric oxide by measuring an absorbance band at 226.5 nm in the ultraviolet spectrum and comparing it to a calibration spectrum in the same region.

The exhaust plume path length and the density of the observed plume are highly variable from vehicle to vehicle, and are dependent upon, among other things, the height of the vehicle's exhaust pipe, wind, and turbulence behind the vehicle. For these reasons, the remote sensor can only directly measure ratios of CO, HC or NO to CO<sub>2</sub>. The ratios of CO, HC, or NO to CO<sub>2</sub>, termed Q, Q' and Q'' respectively, are constant for a given exhaust plume, and on their own are useful parameters for describing a hydrocarbon combustion system. The remote sensor used in this study reports the %CO, %HC and %NO in the exhaust gas, corrected for water and excess oxygen not used in combustion. The %HC measurement is a factor of two smaller than an equivalent measurement by an FID instrument.<sup>6</sup> Thus, in order to calculate mass emissions the %HC values in the equations below would be RSD measured values multiplied by 2. These percent emissions can be directly converted into mass emissions per gallon by the equations shown below.

$$\begin{aligned} \text{gm CO/gallon} &= 5506 \times \% \text{CO} / (15 + 0.285 \times \% \text{CO} + 2.87 \times \% \text{HC}) \\ \text{gm HC/gallon} &= 8644 \times \% \text{HC} / (15 + 0.285 \times \% \text{CO} + 2.87 \times \% \text{HC}) \\ \text{gm NO/gallon} &= 5900 \times \% \text{NO} / (15 + 0.285 \times \% \text{CO} + 2.87 \times \% \text{HC}) \end{aligned}$$

These equations indicate that the relationship between concentrations of emissions to mass of emissions is almost linear, especially for CO and NO and at the typical low concentrations for HC. Thus, the percent difference in emissions calculated from the concentrations of pollutants reported here are equivalent to a difference calculated from the masses of the pollutants.

Another useful conversion is from percent emissions to g pollutant per kg of fuel. This conversion is achieved directly by first converting the pollutant ratio readings to the moles of pollutant per mole of carbon in the exhaust from the following equation:

$$\frac{\text{moles pollutant}}{\text{moles C}} = \frac{\text{pollutant}}{\text{CO} + \text{CO}_2 + 3\text{HC}} = \frac{(\text{pollutant}/\text{CO}_2)}{(\text{CO}/\text{CO}_2) + 1 + 6(\text{HC}/\text{CO}_2)} = \frac{(Q, 2Q', Q'')}{Q + 1 + 6Q'}$$

Next, moles of pollutant are converted to grams by multiplying by molecular weight (e.g., 44 g/mole for HC since propane is measured), and the moles of carbon in the exhaust are converted to kilograms by multiplying (the denominator) by 0.014 kg of fuel per mole of carbon in fuel, assuming gasoline is stoichiometrically CH<sub>2</sub>. Again, the HC/CO<sub>2</sub> ratio must use two times the reported HC (as above) because the equation depends upon carbon mass balance and the NDIR HC reading is about half a total carbon FID reading.<sup>6</sup>

Quality assurance calibrations are performed as dictated in the field by atmospheric conditions and traffic volumes. A puff of gas containing certified amounts of CO, CO<sub>2</sub>, propane and NO is released into the instrument's path, and the measured ratios from the

instrument are then compared to those certified by the cylinder manufacturer (Praxair). These calibrations account for day-to-day variations in instrument sensitivity and variations in ambient CO<sub>2</sub> levels caused by atmospheric pressure and instrument path length. Since propane is used to calibrate the instrument, all hydrocarbon measurements reported by the remote sensor are given as propane equivalents.

Studies sponsored by the California Air Resources Board and General Motors Research Laboratories have shown that the remote sensor is capable of CO measurements that are correct to within  $\pm 5\%$  for the values reported by an on-board gas analyzer, and within  $\pm 15\%$  for HC.<sup>7,8</sup> The NO channel used in this study has been extensively tested by the University of Denver, but we are still awaiting the opportunity to participate in an extensive blind study and instrument intercomparison to have it independently validated. Tests involving a late-model low-emitting vehicle indicate a detection limit ( $\pm 3\sigma$ ) of 25 ppm for NO, with an error measurement of  $\pm 5\%$  of the reading at higher concentrations. Appendix A gives a list of the criteria for valid/invalid data.

The remote sensor is accompanied by a video system to record a freeze-frame image of the license plate of each vehicle measured. The emissions information for the vehicle, as well as a time and date stamp, is also recorded on the video image. The images are stored on videotape, so that license plate information may be incorporated into the emissions database during post-processing. A device to measure the speed and acceleration of vehicles driving past the remote sensor was also used in this study. The system consists of a pair of infrared emitters and detectors (Banner Industries), which generate a pair of infrared beams passing across the road, 6 feet apart and approximately 2 feet above the surface. Vehicle speed is calculated from the time that passes between the front of the vehicle blocking the first and the second beam. To measure vehicle acceleration, a second speed is determined from the time that passes between the rear of the vehicle unblocking the first and the second beam. From these two speeds and the time difference between the two speed measurements, acceleration is calculated and reported in mph/s.

The purpose of this report is to describe the remote sensing measurements made in the Denver area in January of 2001, as part of CRC's E-23 program. Measurements were made on three days: January 5, 6 and 8. The measurement location used in this study was the interchange from northbound I-25 to westbound 6<sup>th</sup> Avenue in central Denver. A map of the measurement location is shown in Figure 1. This interchange ramp has an uphill grade of 8% (4.6°) at the measurement location. Measurements were generally made between the hours of 7:00 and 16:00. This was the third year of a multi-year study to characterize motor vehicle emissions and deterioration in the Denver area.

## **RESULTS AND DISCUSSION**

Following the three days of data collection in Denver, the videotapes were read for license plate identification. Plates that appeared to be in-state and readable were sent to the State of Colorado to be matched against registration records. The resulting database contained 21,042 records with registration information. Most of these records contain valid measurements for all gas species measured (see Table 1). The database can be

found at [www.feat.biochem.du.edu](http://www.feat.biochem.du.edu). The complete structure of the database and the definition of terms are included in Appendix C. The temperature and humidity record is included in Appendix A.

**Table 1:** Validity summary.

	CO	HC	NO
Attempted Measurements	28,856		
Valid Measurements	27,702	26,877	27,665
Percent of Attempts	96%	93.1%	95.9%
Submitted Plates	22,937	22,244	22,906
Percent of Attempts	79.5%	77.1%	79.4%
Percent of Valid Measurements	82.8%	82.3%	82.8%
Matched Plates	21,021	20,390	20,991
Percent of Attempts	72.8%	70.7%	72.7%
Percent of Valid Measurements	75.9%	75.9%	75.9%
Percent of Submitted Plates	91.6%	91.7%	91.6%

The validity of the attempted measurements is summarized in Table 1. The table describes the data reduction process beginning with the number of attempted measurements and ending with the number of records containing both valid emissions measurements and vehicle registration information. An attempted measurement is defined as a beam block followed by a half second of data collection. If the data collection period is interrupted by another beam block from a close following vehicle, the measurement attempt is aborted and an attempt is made at measuring the second vehicle. In this case, the beam block from the first vehicle is not recorded as an attempted measurement. Invalid measurement attempts arise when the vehicle plume is highly diluted, or the reported error in the ratio of the pollutant to CO<sub>2</sub> exceeds a preset limit. See Appendix A. The percent validity of the 2001 measurements is very similar to the validity seen in the previous years at this site, with approximately 70% of attempted measurements being valid and plate matched.

Table 2 is the data summary; included are summaries of previous remote sensing databases collected by the University of Denver at the I-25 and 6<sup>th</sup> Avenue site. The 1999 and 2000 measurements were conducted in December (of the previous year) and January (of that year) as parts of this multi-year CRC study. The measurements conducted in January of 1996 and 1997 were part of a separate study and are included here for comparison only.

The average HC values here have been adjusted so as to remove an artificial offset in the measurements. This offset, restricted to the HC channel, has been reported in earlier CRC E-23-4 reports, but diagnosis has proved difficult. In the absence of a true diagnosis of the problem, we propose a remedy to remove the offset and obtain data which can be compared from the several years of study. This adjustment is to subtract a predetermined offset from the averaged data. The offset is determined as the average emissions of the cleanest model year and make of vehicles from each data set. Since we

assume the cleanest vehicles to emit next to nothing, such an approximation will only err slightly towards clean because the true offset will be a value somewhat less than the average of the cleanest model year and make. However, this procedure will adjust the data so that measurements from different years can be compared.

The make/model year groups chosen are restricted to those containing at least 200 measurements. The groups with the lowest average emissions are not always the same during the different years of measurement. Instead, the groups tend to be up to three year old model years from one or more of the following makes: Ford, Jeep, Toyota and Honda. For example, in this year's data set the 2000 Honda group and 1999 Ford group had the lowest average HC emissions (in fact, they were negative) so were chosen as the offset standards and gave an average offset of -50 ppm. For the other Denver data sets, offsets were determined to be 5 and 60 for measurements conducted in 1999 and 2000, respectively. Offsets calculated for the two earlier reports are 70 and 100 ppm for 1996 and 1997. The offset subtraction has been performed here and later in the analysis where indicated.

**Table 2.** Data summary.

	2001	2000	1999	1997	1996
Mean CO (%) (g/kg of fuel)	0.34 (43)	0.43 (54)	0.45 (56)	0.51	0.53
Median CO (%) (g/kg of fuel)	0.06 (8)	0.11 (15)	.09 (11.7)		
% of Total CO from Dirtiest 10% of Fleet	73.2	65.3	66.3	67.0	63.8
Mean HC (ppm) <sup>†</sup> (g/kg of fuel) <sup>†</sup>	112 (2.3)	115 (2.3)	125 (2.5)	160	180
Median HC (ppm) <sup>†</sup> (g/kg of fuel) <sup>†</sup>	80 (1.6)	50 (1.0)	75 (1.5)		
% of Total HC from Dirtiest 10% of Fleet <sup>†</sup>	77.2	77.6	66.0	72.5	77.5
Mean NO (ppm) (g/kg of fuel)	483 (6.8)	511 (7.2)	600 (8.4)	620*	860*
Median NO (ppm) (g/kg of fuel)	133 (1.9)	165 (2.3)	240 (3.4)		
% of Total NO from Dirtiest 10% of Fleet	51.7	48.4	44.6	43.6*	38.1*
Mean Model Year	1994.6	1993.4	1992.4	1990.3	1989.2
Mean Speed (mph)	22.3	21.9	20.6	21.7	21.9
Mean Accel. (mph/s)	-0.77	0.08	0.21	0.11	-0.21
<sup>†</sup> These values have been HC offset adjusted as described in text.					
* Nitric oxide measurements until 1997 were made using a non-dispersive ultraviolet absorption NO channel. See Zhang <i>et al.</i> <sup>8</sup>					



The table shows that fleet average emissions of each successive measurement is lower than the previous year. This trend is most likely due to a combination of technological advances in the emissions control systems of the modern fleet (and the removal of older technology vehicles from the fleet) and the fact that average age of the fleet has continually decreased during successive measurement campaigns. As with other analyses in this report, however, such effects are suggested by the data and can only be rigorously proved by further measurements.

It should also be noted that the measurements conducted in 1996 and 1997 were made with a non-dispersive ultraviolet absorption nitric oxide channel, as described by Zhang *et al.*<sup>9</sup> The instrument used in the current study, as in all studies conducted by the University of Denver under CRC's E-23 program, measures nitric oxide by dispersive ultraviolet absorption spectroscopy and is believed to offer a considerable improvement in measurement quality over the non-dispersive instrument.<sup>4</sup>

**Table 3.** Number of measurements on repeat vehicles.

Number of Times Measured	Number of Vehicles
1	16,491
2	1,842
3	254
4	23
4+	2
Total individual vehicles	18,612

Table 3 provides an analysis of the number of vehicles that were measured repeatedly, and the number of times they were measured. Of the 21,042 records used in this fleet analysis, 16,491 (78%) were contributed by vehicles measured once, and the remaining 4551 (22%) records were from vehicles measured at least twice.

Figure 2 shows the distribution of CO, HC and NO emissions by percent or ppm category from the data collected in this study. The solid bars show the percentage of the fleet in a given emissions category, and the gray bars show the percentage of the total emissions contributed by the given category. This figure illustrates the skewed nature of automobile emissions, showing that the lowest emission category is occupied by no less than 73% of the fleet for NO and more than 91% of the fleet for CO. The fact that the cleanest 91% of the fleet is responsible for only 30% of the CO emissions further demonstrates how the emissions picture can be dominated by a small number of high-emitting vehicles. The skewed distribution was also seen in the 1996, 1997, 1999 and 2000 data and is represented by the consistent high values of percent of total emissions from the dirtiest 10% of the fleet (See Table 2). Because of the large number of negative HC measurements, the lowest hydrocarbon emission category is set to  $\leq 600$  ppm.

The inverse relationship between vehicle emissions and model year has been observed at a number of locations around the world, and Figure 3 shows that the fleet in the Denver area is not an exception.<sup>4</sup> The plot of % NO vs. model year rises rather sharply, at least

compared to the plots for CO and HC, and then appears to level out in model years prior to 1987. This has been observed previously,<sup>5,9</sup> and is likely due to the tendency for older vehicles to lose compression and operate under fuel-rich conditions, both factors resulting in lower NO emissions. The somewhat relatively high HC emissions of the two newest model years measured in 2001 remains unexplained. The HC plots have been HC adjusted.

Plotting vehicle emissions by model year, with each model year divided into emission quintiles results in the plots shown in Figure 4. Very revealing is the fact that, for all three major pollutants, the cleanest 40% of the vehicles, regardless of model year, make an essentially negligible contribution to the total emissions. This observation was first reported by Ashbaugh and Lawson in 1990.<sup>10</sup> The results shown here continue to demonstrate that broken emissions control equipment has a greater impact on fleet emissions than vehicle age; 73%, 77% and 52% of CO, HC and NO emissions, respectively, are produced by 10% of the fleet. Therefore, vehicle age alone cannot be used as an indicator of vehicle emissions, and that all vehicles of a given model year do not have the same emissions.

An equation for determining the instantaneous power of an on-road vehicle has been proposed by Jimenez<sup>11</sup>, which takes the form

$$SP = 4.39 \cdot \sin(\text{slope}) \cdot v + 0.22 \cdot v \cdot a + 0.0954 \cdot v + 0.0000272 \cdot v^3$$

where SP is the vehicle specific power in kW/metric tonne, *slope* is the slope of the roadway (in degrees), *v* is the vehicle speed in mph, and *a* is the vehicle acceleration in mph/s. Using this equation, vehicle specific power was calculated for all measurements with valid speed and acceleration collected in the database. The emissions data were binned according to vehicle specific power and are illustrated in Figure 5. Here also, HC offset has been adjusted. The triangles in Figure 5 provide the number of measurements in each bin. Also shown in Figure 5 are vehicle emissions binned by specific power for remote sensing measurements collected in 1999 and 2000 at the same site. As expected, CO and HC emissions show a negative dependence on vehicle specific power, while NO emissions show an overall positive dependence. The error bars included in the plot are standard errors of the mean. These uncertainties were generated for these  $\gamma$ -distributed data sets by applying the central limit theorem. Each day's average emission for a given VSP bin was assumed to be an independent measurement of the emissions at that VSP. Normal statistics were then applied to these daily averages. The increase of the CO and HC emissions measured in Denver at specific powers above 20 kW/tonne may be due to commanded power enrichment. The VSP distribution is in fact shifted to slightly lower VSP in 2001 compared to the previous years. The lower VSP is a result of the significantly lower average acceleration (See Table 2). Furthermore, the lower acceleration is the result of episodes of traffic congestion not experienced during previous years of study on this ramp.

Using vehicle specific power, it is possible to reduce the influence of load and driving behavior from the mean vehicle emissions. Table 4 shows the mean emissions from vehicles in the 1999, 2000 and 2001 databases with specific powers between 0 and 25 kW/tonne. Note that these emissions do not vary considerably from the mean emissions

for the entire databases, as shown in Table 2. Also shown in Table 4 are the mean emissions for the 2000 and 2001 measurements adjusted for specific power. This correction is accomplished by applying the mean vehicle emissions for each specific power bin in Figure 5 for a certain year's measurements to the vehicle distribution, by specific power, for each bin from 1999. A sample calculation, for the specific power adjusted mean NO emissions in Chicago in 1998, is shown in Appendix E. Uncertainties are 95% confidence intervals of the mean of each individual day of measurement's average.

It can be seen from Table 4 that VSP adjustment does not correct for the decreased CO emissions in 2001. HC offset adjustment has been applied, and a decreasing trend in the yearly adjusted averages is seen. These differences, however, are well within the uncertainties. Also in the case of NO, a trend is not revealed as uncertainties overlap.

**Table 4.** Specific power adjusted fleet emissions (0 to 25 kW/tonne only).

	1999	2000 (measured)	2000 (adjusted)	2001 (measured)	2001 (adjusted)
Mean CO (%)	<b>0.42±.03</b>	0.41±.07	<b>0.42±.07</b>	0.32±.02	<b>0.32±.02</b>
Mean HC (ppm)	<b>123±10</b>	114±50	<b>117±51</b>	109±57	<b>98±51</b>
Mean NO (ppm)	<b>576±136</b>	495±86	<b>488±85</b>	473±161	<b>510±174</b>

A correction similar to the VSP adjustment can be applied to a fleet of specific model year vehicles to look at model year deterioration, provided we use as a baseline only model years measured in the 1999 study. Table 5 shows the mean emissions for all vehicles from model year 1982 to 1999, as measured in 1999, 2000 and 2001. Applying the vehicle distribution by model year from 1999 to the mean emissions by model year from 2000 and 2001 yields the model year adjusted fleet emissions. HC offset correction has been applied. A sample calculation, for the model year adjusted mean NO emissions in Chicago in 1998, is shown in Appendix F. Uncertainties are again 95% confidence intervals calculated from daily averages. Though uncertainties overlap, the adjustments show that the decreases in total fleet average emissions of CO and HC seen during the current measurements are at least partially due to fleet turnover.

**Table 5.** Model year adjusted fleet emissions (MY 1982-1999 only).

	1999	2000 (measured)	2000 (adjusted)	2001 (measured)	2001 (adjusted)
Mean CO (%)	<b>0.39±.03</b>	0.38±.06	<b>0.42±.07</b>	0.34±.02	<b>0.41±.03</b>
Mean HC (ppm)	<b>111±9</b>	103±45	<b>114±50</b>	106±55	<b>125±65</b>
Mean NO (ppm)	<b>568±134</b>	500±87	<b>544±95</b>	514±175	<b>589±201</b>

In order to eliminate some of the differences in the fleet measured during the three years, an average emissions analysis was done on only those vehicles that were measured in all three years. Approximately 2320 vehicles fell into this category. The average emissions

of these vehicles is given in Table 6 below. HC offset adjustment has been applied. Only the current year's measurement mean for these common vehicles is similar to the overall fleet average. Vehicles measured in 2001 that were also measured in 1999 and 2000 were, on average, the cleaner vehicles in 1999 and 2000. This fact seems to indicate that vehicles which survive aging and presumably stay with the same owner and driving routine tend to be, on average, the cleaner ones. This fleet-average result may be caused by individual high emitters dropping out of the fleet.

**Table 6.** Average emissions of vehicles measured in three years.

	1999	2000	2001
Mean CO (%)	0.27	0.28	0.32
Mean HC (ppm)	92	79	117
Mean NO (ppm)	414	450	427

Vehicle deterioration can be illustrated by Figure 6, which shows the mean emissions of the 1982 to 2001 model year fleet as a function of vehicle age. Data from the 1996 and 1997 measurements are also included. The first point for each model year was measured in 1996, the second in 1997, the third in 1999, the fourth in 2000 and the last point in 2001. Vehicle age was determined by the difference between the year of measurement and the vehicle model year. The most recent model years (up to 5 years old) show a small deterioration from one year to the next for all three pollutants. The deterioration rate seems to increase in the model years that are 8 years old and older.

The CO emissions increase gradually with age except for the most recent measurements, where average emissions seem to have decreased for some model years. This phenomenon may be the result of the fleet turnover described in the model year adjustment analysis and the recurring vehicle analysis described above. HC emissions, when offset adjusted, show gradual increases for each model year as it ages.

The NO measurements also show a curious effect. The NO emissions of almost every model year measured in 1996 are significantly higher than in the other years of measurement. This is likely due to the fact that in 1996 and 1997 a non-dispersive method was used to measure NO. This instrument was less precise than the current instrument and most likely was measuring with an offset in 1996. Otherwise, NO emissions show a slow but steady deterioration with age.

Another use of the on-road remote sensing data is to predict the abundance of vehicles that are high emitting for more than one pollutant measured. One can look at the high CO emitters and calculate what percent of these are also high HC emitters, for example. This type of analysis would allow a calculation of HC emission benefits resulting from fixing all high CO emitters. To this extent we have analyzed our data to determine what percent of the top decile of emitters of one pollutant are also in the top decile for another pollutant. These data are in Table 7; included in the analysis are only those vehicles that have valid readings for all three pollutants. The column heading is the pollutant whose top decile is being analyzed, and the values indicate what percentage of the fleet are high emitters only for the pollutants in the column and row headings. The values where the

column and row headings are the same indicate the percentage that are high emitting in the one pollutant only. The “All” row gives the percentage of the fleet that is high emitting in all three pollutants.

**Table 7:** Percent of all vehicles that are high emitting.

Top 10% Decile	CO	HC	NO
CO	5.3%	3.6%	0.5%
HC	3.6%	4.5%	1.4%
NO	0.5%	1.4%	7.4%
All	0.7%	0.7%	0.7%

Thus, the table shows that 3.6% of the fleet are in the top decile for both HC and CO but not NO; 0.5% of the of the fleet is high emitting for CO and NO but not HC; 5.3% of the fleet are high CO emitters only.

The preceding analysis gives the percent of vehicle overlap but does not directly give emissions overlap. In order to assess the overall emissions benefit of fixing all high emitting vehicles of one or more pollutant, one must convert the Table 7 values to percent of emissions. Table 8 shows that identification of all vehicles that are high emitting for CO would identify an overall 27.6% of HC and 2.6% of NO reduction. More efficiently, identification of the 3.6% high CO and HC vehicles accounts for 26% of the total CO and 28% of the total on-road HC. HC offset correction has been applied.

**Table 8:** Percent of total emissions from high emitting vehicles.

Top 10% Decile	CO	HC	NO
CO	38.9%	27.6%	2.6%
HC	26.4%	34.5%	7.2%
NO	3.7%	10.7 %	38.2%
All	5.1%	5.4%	3.6%

In the manner described in the Phoenix, Year 2 report<sup>12</sup>, instrument noise was measured by looking at the slope of the negative portion of the log plots. Such plots were constructed for the three pollutants. Linear regression gave best fit lines whose slopes correspond to the inverse of the Laplace factor, which describes the noise present in the measurements. This factor must be viewed in relation to the average measurement for the particular pollutant to obtain a description of noise. The Laplace factors were found to be 0.14, 0.041 and 0.004 for CO, HC and NO, respectively. These values indicate standard deviations of 0.20%, 580 ppm and 60 ppm for individual measurements of CO, HC and NO, respectively. In terms of uncertainty in average values reported here, the numbers are reduced by a factor of the square root of the number of measurements. For example, with averages of 100 measurements, which is the low limit for number of measurements per bin, the uncertainty reduces by a factor of 10. Thus, the uncertainties

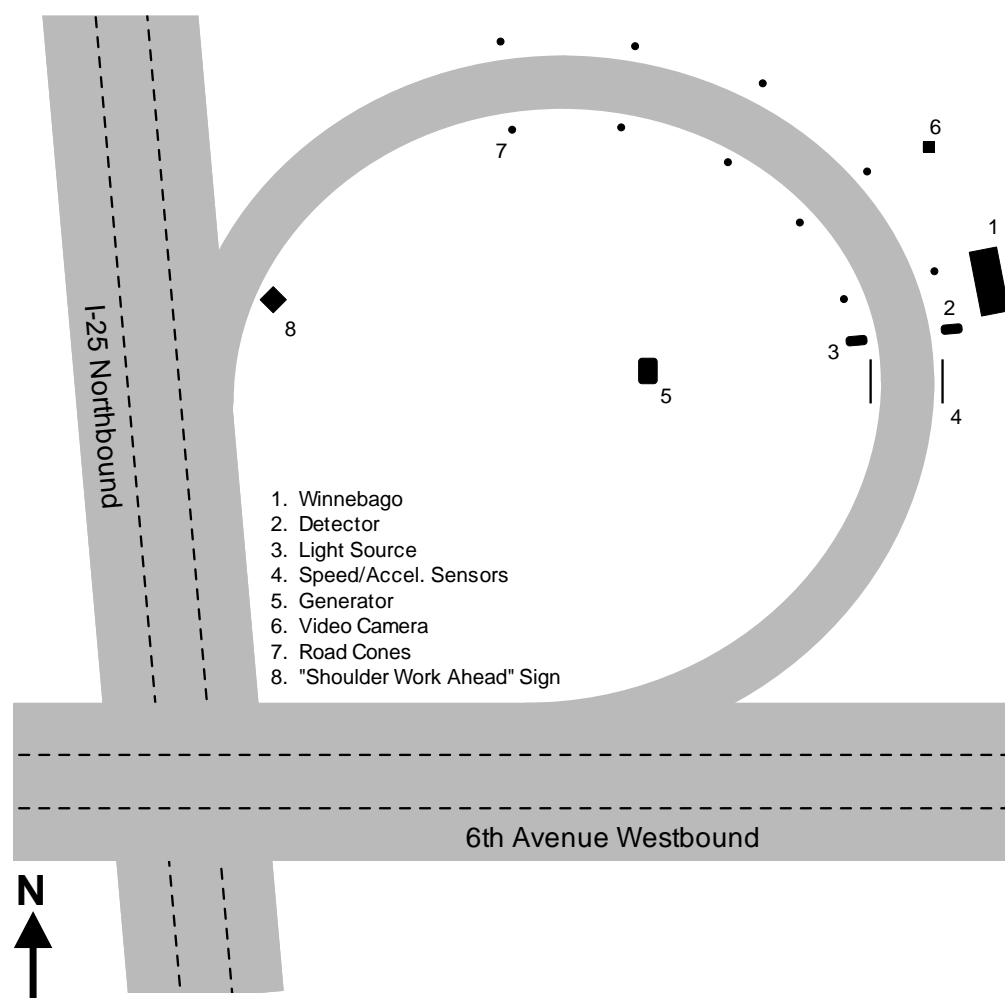
in the averages reduce to 0.02%, 60 ppm and 6 ppm, respectively. This HC noise puts these HC measurements in the higher of the two HC noise groups reported earlier.<sup>12</sup>

## CONCLUSIONS

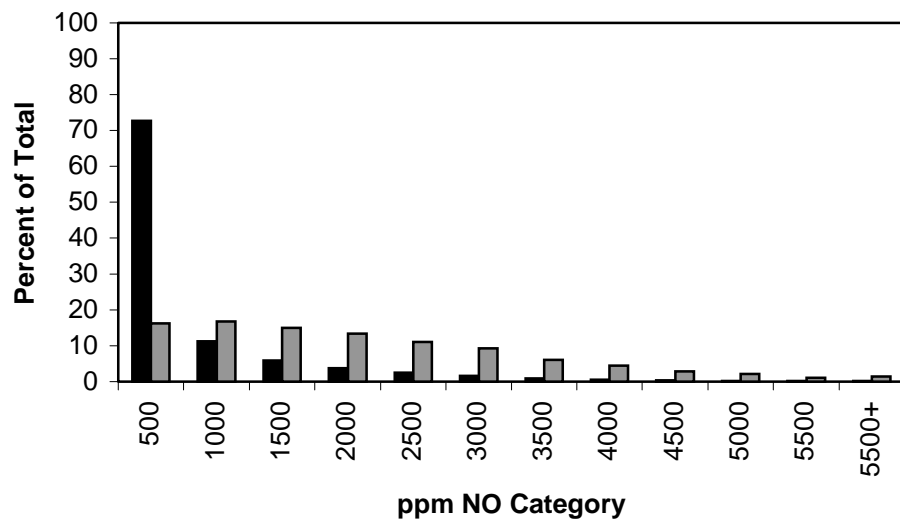
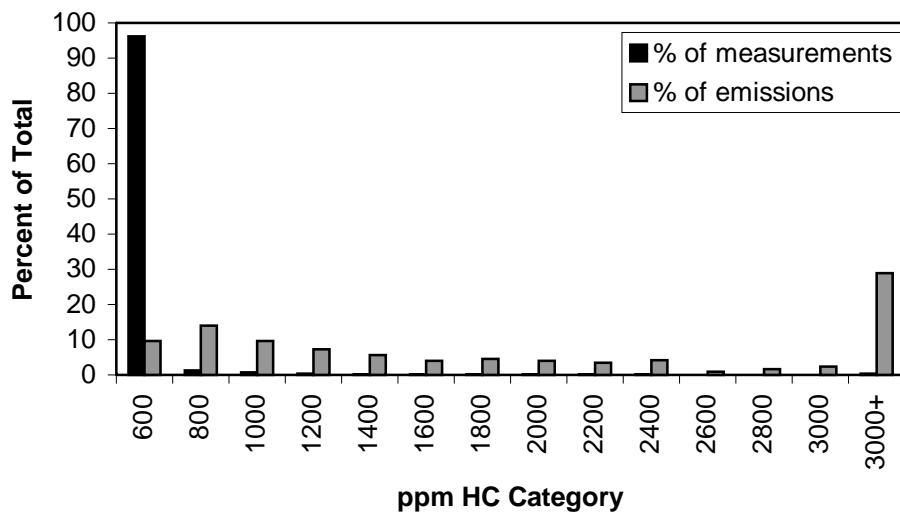
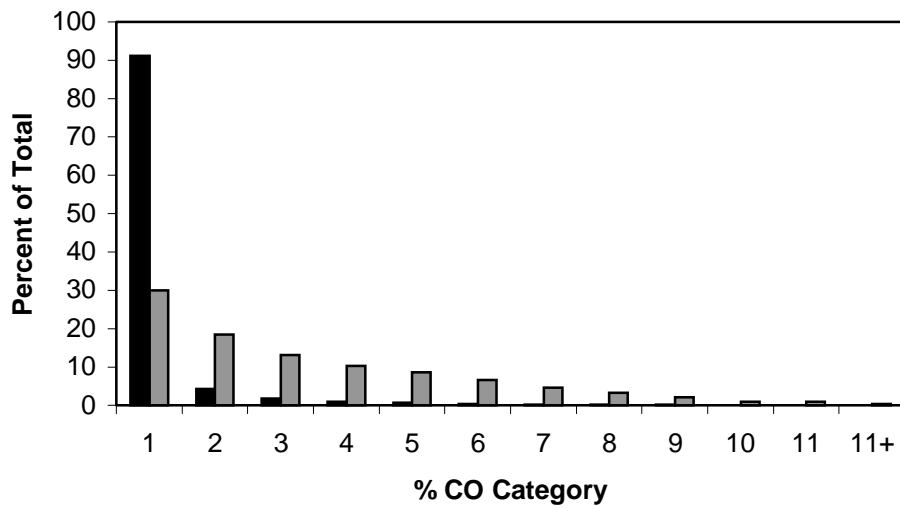
The University of Denver has completed the third year of a multi-year remote sensing study of motor vehicle emissions and deterioration in the Denver area. Three days of fieldwork were conducted on an uphill interchange ramp from northbound I-25 to westbound 6<sup>th</sup> Avenue in central Denver. A database was compiled containing 21,042 records for which the State of Colorado provided make, model year and I/M status information. Of these records 20,361 contained valid measurements for all gases measured.

The mean CO, HC and NO emissions for the fleet measured in this study were 0.34%, 112 ppm (offset adjusted) and 483 ppm, respectively with an average model year of 1994.6. The fleet emissions observed at the site in Denver exhibited a skewed distribution, with the dirtiest 10 % of the fleet contributing 73%, 77% and 52% of the CO, HC and NO emissions, respectively. An analysis of the emissions as a function of model year showed a typical inverse relationship. Measured emissions as a function of vehicle specific power supported the finding that HC and CO show a negative correlation while NO shows a positive one.

Having collected data for three consecutive years at the same time and location, it was possible to show the deterioration of a specific model year fleet from one year to the next. It was seen that more recent model year vehicles have lower CO emissions quite independent of age. An analysis of high emitting vehicles showed that there is considerable CO and HC overlap. Continuing studies at the same site should allow further insight to be gained as to the effects of deterioration on motor vehicle emissions from one year to the next. Data are available on the web at [www.feet.biochem.du.edu](http://www.feet.biochem.du.edu) for the 2001 and previous studies. Appendix C defines the database format.

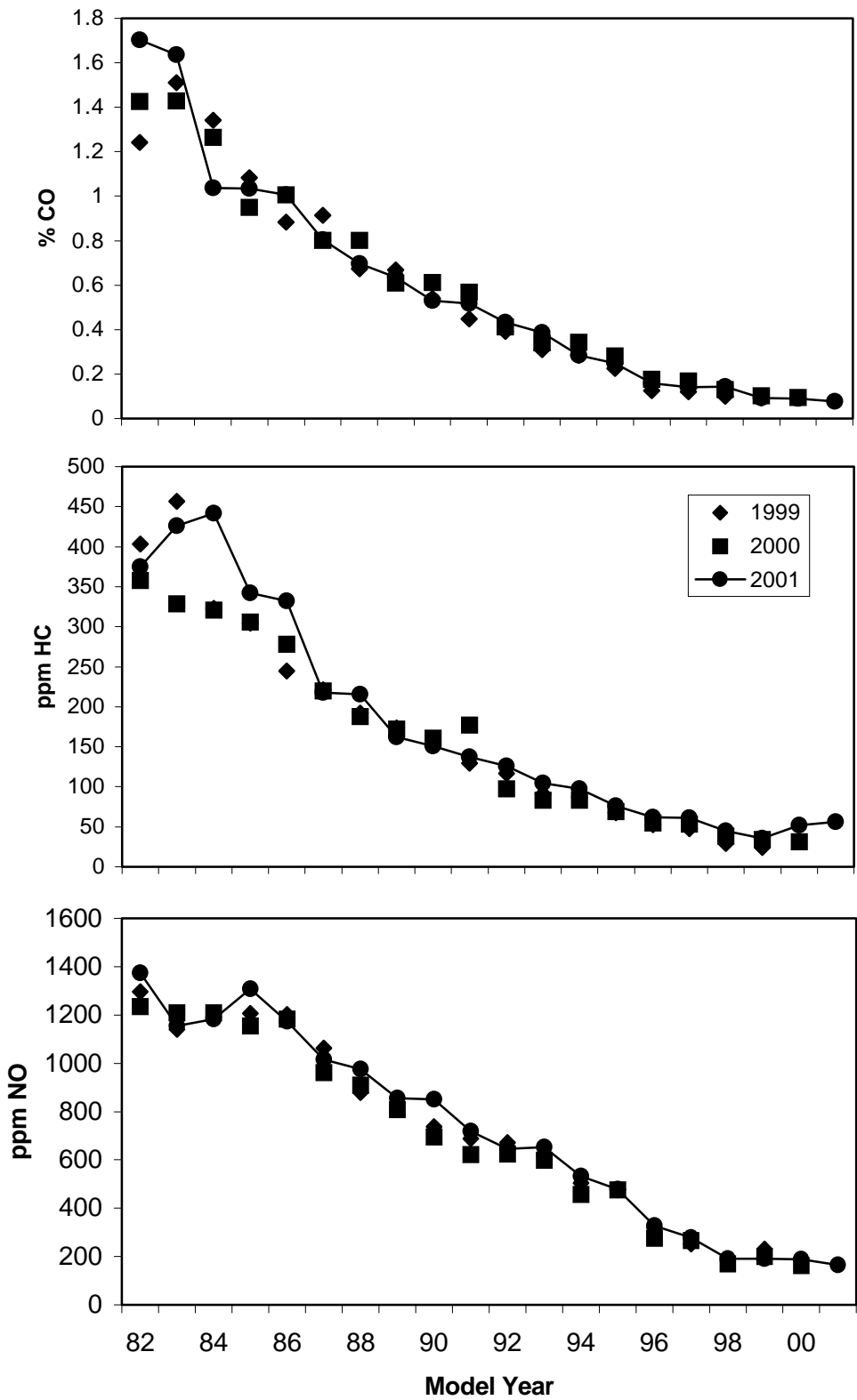


**Figure 1.** Area map of the interchange from I-25 northbound to 6<sup>th</sup> Avenue westbound in central Denver, showing remote sensor configuration and safety equipment.

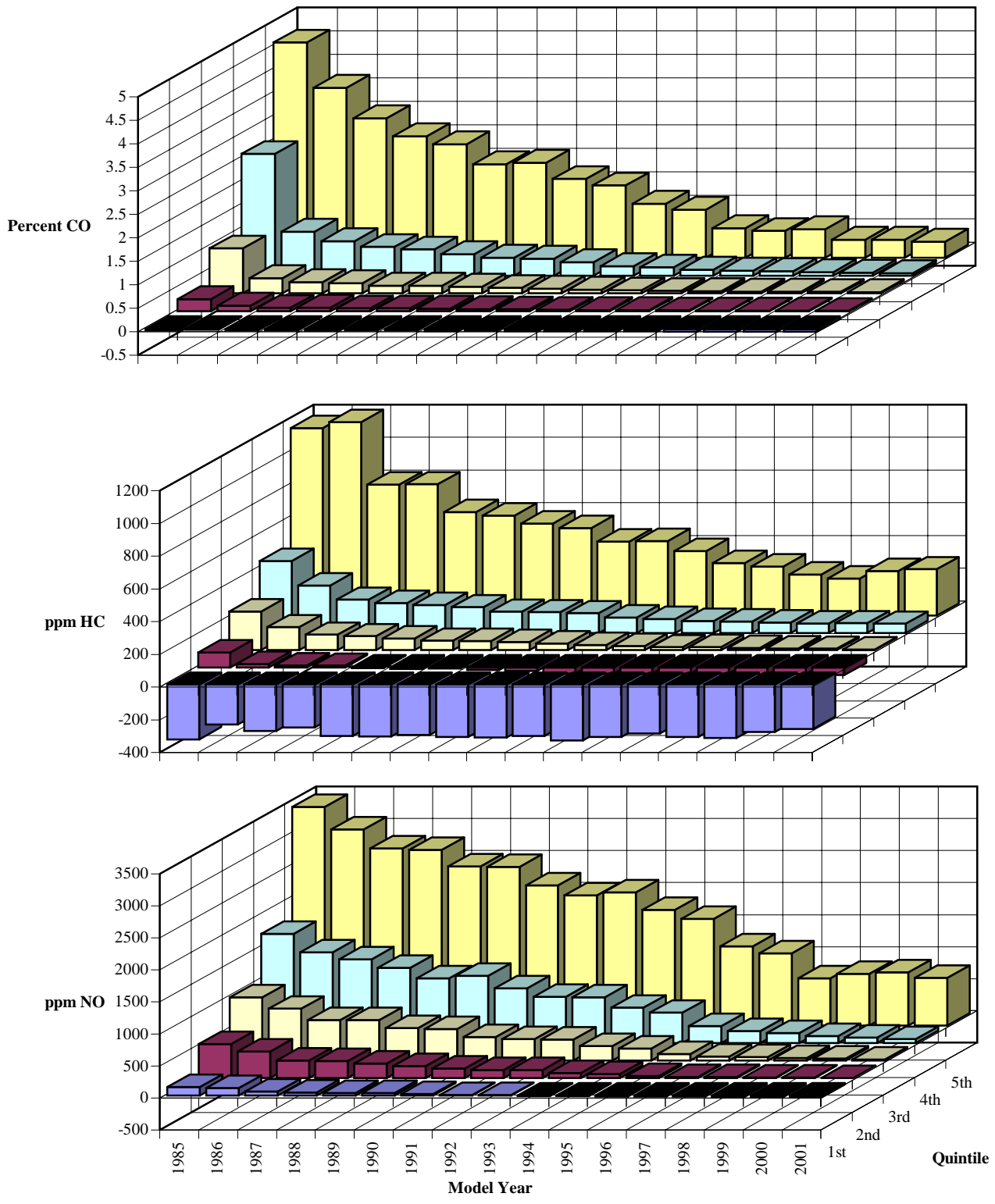


**Figure 2.** Emissions distribution showing the percentage of the fleet in a given emissions category (black bars) and the percentage of the total emissions contributed by the given category (gray bars).

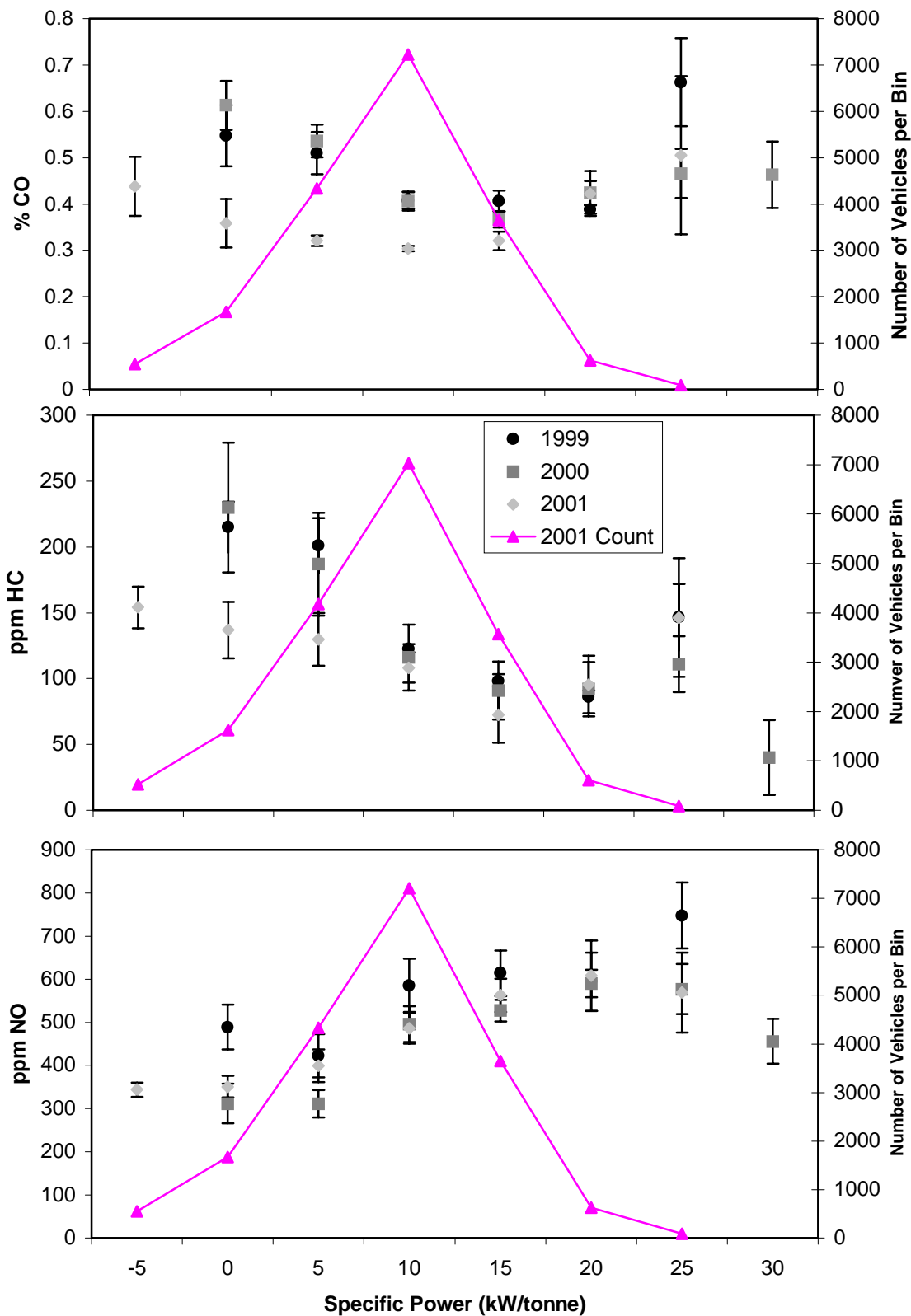




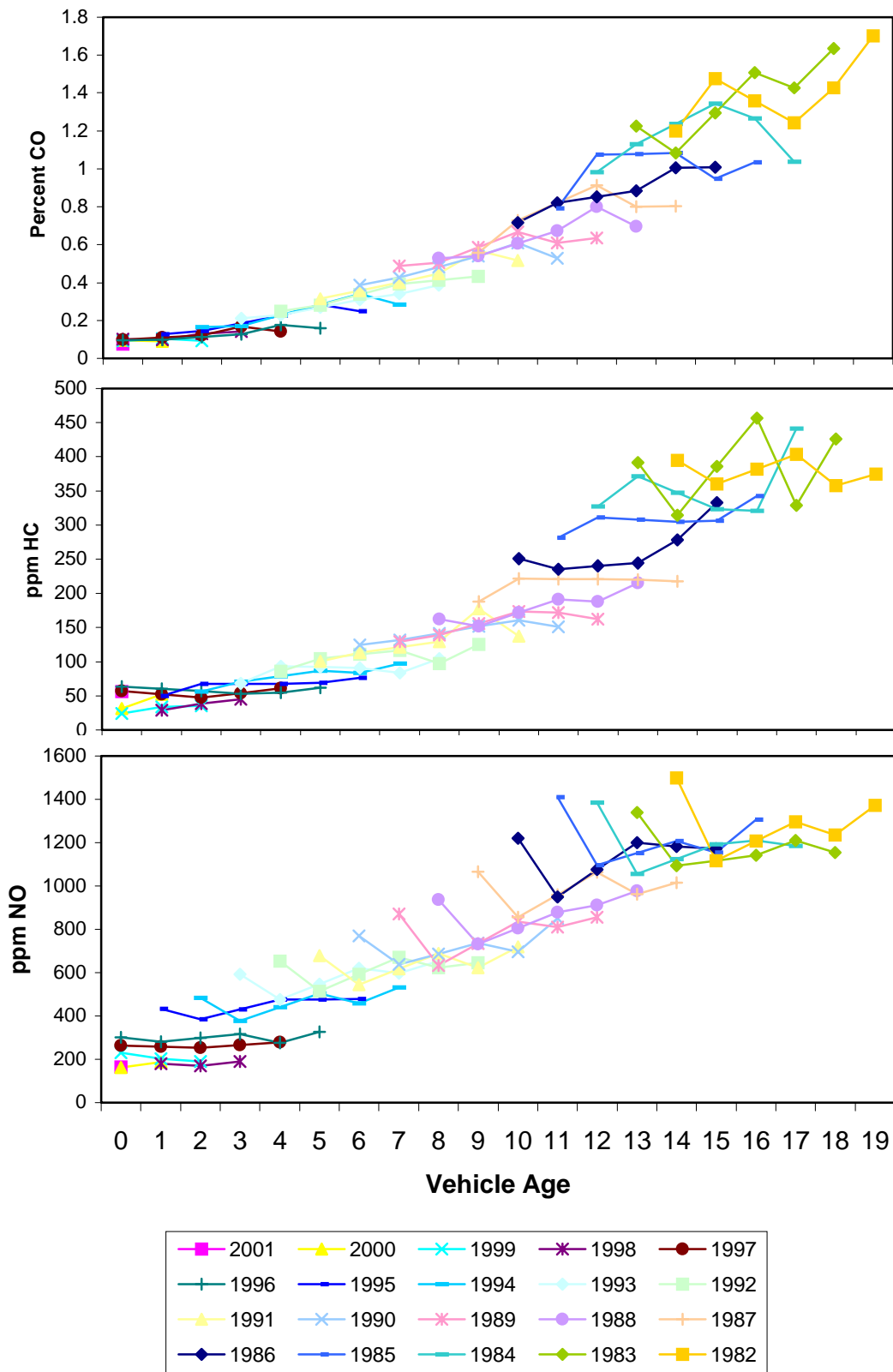
**Figure 3.** Mean vehicle emissions illustrated as a function of model year. Included are data from three years of measurement at this site.



**Figure 4.** Vehicle emissions by model year, divided into quintiles.



**Figure 5.** Vehicle emissions as a function of vehicle specific power. Data for the three years of study at this site are given, along with measurement counts for 2001 only. Error bars are 95% confidence intervals of the mean.



**Figure 6.** Mean vehicle emissions as a function of age, shown by model year.

## LITERATURE CITED

1. *National Air Quality Emissions Trends, 1998*, United States Environmental Protection Agency, Research Triangle Park, NC, **2000**; EPA-454/R-00-003, p. 11.
2. Heywood, J.B. *Internal Combustion Engine Fundamentals*; McGraw-Hill: New York, 1988.
3. Lefohn, A.S.; Shadwick, D.S.; Ziman, S.D. *Environ. Sci. Technol.* **1998**, *32*, 276A.
4. Bishop, G.A.; Stedman, D.H. *Acc. Chem. Res.* **1996**, *29*, 489.
5. Popp, P.J.; Bishop, G.A.; Stedman, D.H. *J. Air & Waste Manage. Assoc.* **1999**, *49*, 1463.
6. Singer, B.C.; Harley, R.A.; Littlejohn, D.; Ho, J.; Vo, T. *Environ. Sci. Technol.* **1998**, *27*, 3241.
7. Lawson, D.R.; Groblicki, P.J.; Stedman, D.H.; Bishop, G.A.; Guenther, P.L. *J. Air & Waste Manage. Assoc.* **1990**, *40*, 1096.
8. Ashbaugh, L.L.; Lawson, D.R.; Bishop, G.A.; Guenther, P.L.; Stedman, D.H.; Stephens, R.D.; Groblicki, P.J.; Parikh, J.S.; Johnson, B.J.; Haung, S.C. "On-road remote sensing of carbon monoxide and hydrocarbon emissions during several vehicle operating conditions." Presented at Environmental Source Controls, Phoenix, AZ, 1992.
9. Zhang, Y.; Stedman, D.H.; Bishop, G.A.; Beaton, S.P.; Guenther, P.L.; McVey, I.F. *J. Air & Waste Manage. Assoc.* **1996**, *46*, 25.
10. Ashbaugh, L.L.; Lawson, D.R. presented at the 84<sup>th</sup> Air and Waste Management Association meeting: Vancouver, B.C., reprint No. 91-180.58, June 1991.
11. Jimenez, J.L.; McClintock, P.; McRae, G.J.; Nelson, D.D.; Zahniser, M.S. In *Proceedings of the 9<sup>th</sup> CRC On-Road Vehicle Emissions Workshop*, San Diego, CA, 1999.
12. Pokharel, S.S.; Bishop, G.A.; Stedman, D.H. *On-Road Remote Sensing of Automobile Emissions in the Phoenix Area: Year 2*. A draft report to the Coordinating Research Council. University of Denver. 2000.

## **APPENDIX A: FEAT criteria to render a reading not measured or “invalid”.**

Not measured:

- 1) Vehicle with less than 0.5 seconds clear to the rear. Often caused by elevated pickups and trailers causing a “restart” and renewed attempt to measure exhaust. The restart number appears in the data base.
- 2) Vehicle which drives completely through during the 0.4 seconds “thinking” time (relatively rare).

Invalid :

- 1) Insufficient plume to rear of vehicle relative to cleanest air observed in front or in the rear; at least five, 10ms averages  $>200$ ppmm CO<sub>2</sub> or  $>400$  ppmm CO. (0.25 %CO<sub>2</sub> or 0.5% CO in an 8 cm cell. This is equivalent to the units used for CO<sub>2</sub> max.) Often HD diesel trucks, bicycles.
- 2) Too high error on CO/CO<sub>2</sub> slope, equivalent to  $\pm 20\%$  for %CO.  $>1.0$ , 0.2%CO for %CO $<1.0$ .
- 3) Reported %CO ,  $<-1\%$  or  $>21\%$ . All gases invalid in these cases.
- 4) Too high error on HC/CO<sub>2</sub> slope, equivalent to  $\pm 20\%$  for HC  $>2500$ ppm propane, 500ppm propane for HC  $<2500$ ppm.
- 5) Reported HC  $<-1000$ ppm propane or  $>40,000$ ppm. HC “invalid”.
- 6) Too high error on NO/CO<sub>2</sub> slope, equivalent to  $\pm 20\%$  for NO $>1500$ ppm, 300ppm for NO $<1500$ ppm.
- 7) Reported NO $<-700$ ppm or  $>7000$ ppm. NO “invalid”.

Speed/Acceleration valid only if at least two blocks and two unblocks in the time buffer and all blocks occur before all unblocks on each sensor and the number of blocks and unblocks is equal on each sensor and  $100\text{mph} > \text{speed} > 5\text{mph}$  and  $14\text{mph/s} > \text{accel} > -13\text{mph/s}$  and there are no restarts, or there is one restart and exactly two blocks and unblocks in the time buffer.

## APPENDIX B: Temperature data.

1999		
Date	Time	Temp. (°F)
01/14	1416	57
	1550	56
01/15	0925	47
	0945	48
	1024	58
	1108	58
01/18	1125	58
	0830	40
	0930	45
	1020	50
	1050	55
02/01	1130	50
	1200	46
	0800	26
	0833	30
	0911	33
	0929	33
	1000	40
	1025	46
	1107	54
	1156	55

2000				
Date	Time	Temp. (°F)	Humid. (%RH)	
12/30	1123	48	38	
	1203	51	32	
	1306	54	29	
	1402	55	28	
	1514	64	26	
	1600	57	26	
	1654	52	27	
	01/11	0933	54	38
		1033	54	32
		1150	55	28
1233		52	30	
1337		49	37	
1437		50	39	
1551		49	41	
1607		48	41	
01/13		0843	35	61
		0943	35	61
	1042	35	62	
	1102	36	61	
	1201	39	59	
	1309	41	56	
	1411	42	52	
	1509	45	48	
	01/14	0753	32	69
		0842	35	65
0953		43	50	
1115		51	36	

2001			
Date	Time	Temp. (°F)	Humid. (%RH)
1/5	7:42	32.5	60
	8:57	73.2	59
	9:45	42.5	51
	11:49	59.1	28
1/6	13:05	64	24
	14:10	66.3	20
	7:12	41.3	44
	8:13	42.2	46
	10:12	49.8	38
	11:30	50.6	38
	12:30	52.4	37
	13:33	61	21
	14:43	61	<20
	15:47	61	25
1/8	7:50	26.8	38
	8:57	53.4*	24*
	10:18	43	28
	11:19	46.4	24
	12:27	50.9	21
	13:27	53.1	<20
	14:27	53.8	<20
	15:27	53.3	<20

\*Inaccurate measurements due to direct sunlight

## Appendix C: Explanation of the den\_01.dbf database.

The den\_01.dbf is a Microsoft Foxpro database file, and can be opened by any version of MS Foxpro, regardless of platform. The following is an explanation of the data fields found in this database:

<b>License</b>	Colorado license plate
<b>Date</b>	Date of measurement, in standard format.
<b>Time</b>	Time of measurement, in standard format.
<b>Percent_co</b>	Carbon monoxide concentration, in percent.
<b>Co_err</b>	Standard error of the carbon monoxide measurement.
<b>Percent_hc</b>	Hydrocarbon concentration (propane equivalents), in percent.
<b>Hc_err</b>	Standard error of the hydrocarbon measurement.
<b>Percent_no</b>	Nitric oxide concentration, in percent.
<b>No_err</b>	Standard error of the nitric oxide measurement
<b>Percent_co2</b>	Carbon dioxide concentration, in percent.
<b>Co2_err</b>	Standard error of the carbon dioxide measurement.
<b>Opacity</b>	Opacity measurement, in percent.
<b>Opac_err</b>	Standard error of the opacity measurement.
<b>Restart</b>	Number of times data collection is interrupted and restarted by a close-following vehicle, or the rear wheels of tractor trailer.
<b>CO2_flag</b>	Indicates a valid carbon dioxide measurement by a “V”, invalid by an “X”.
<b>CO_flag</b>	Indicates a valid carbon monoxide measurement by a “V”, invalid by an “X”.
<b>Hc_flag</b>	Indicates a valid hydrocarbon measurement by a “V”, invalid by an “X”.
<b>No_flag</b>	Indicates a valid nitric oxide measurement by a “V”, invalid by an “X”.
<b>Opac_flag</b>	Indicates a valid opacity measurement by a “V”, invalid by an “X”.
<b>Max_co2</b>	Reports the highest absolute concentration of carbon dioxide measured by the remote sensor; indicates the strength of the observed plume. Units are %CO <sub>2</sub> as measured in an 8 cm cell.
<b>Speed_flag</b>	Indicates a valid speed measurement by a “V”, an invalid by an “X”.
<b>Speed</b>	Measured speed of the vehicle, in mph.
<b>Accel</b>	Measured acceleration of the vehicle, in mph/s.
<b>Veh_type</b>	Type of vehicle.
<b>Vin</b>	Vehicle identification number.



<b>Year</b>	Model year of the vehicle.
<b>Make</b>	Manufacturer of the vehicle.
<b>Model</b>	Model name of the vehicle.
<b>Body</b>	Body style of the vehicle.
<b>Series</b>	Series code of vehicle.
<b>Fuel</b>	Fuel type: 'G' indicates gasoline, 'D' indicates diesel
<b>Gvw</b>	Gross vehicle weight?
<b>Legl_city</b>	City the vehicle resides in.
<b>Legal_St</b>	State the vehicle resides in.
<b>Legl_zip5</b>	Zip code the vehicle resides in.
<b>Mail_City</b>	City of owner mailing address.
<b>Mail_St</b>	State of owner mailing address.
<b>Mail_zip5</b>	Zip code of owner mailing address.
<b>County</b>	County code where vehicle resides.
<b>Urbn_rl_cd</b>	Urban or rural designation where vehicle resides. 'R' is rural and 'U' is urban.
<b>Bus_Date</b>	Unknown.
<b>Expire_Date</b>	Date that current vehicle registration expires.
<b>Purch_Date</b>	Date vehicle was purchased.
<b>Msrp</b>	Manufacturer suggested retail price in US\$.
<b>Odometer</b>	Odometer reading during I/M inspection.
<b>Prch_price</b>	Price at which vehicle was purchased in US\$ x 100.
<b>Emiss_flag</b>	I/M flag: 'Y', 'N', 'X'.
<b>E_Status</b>	I/M status: 'P' is pass and 'E' is exempt.
<b>Prog_Type</b>	I/M type: 'E' is enhanced and 'B' is basic.
<b>Test_date</b>	I/M test date.
<b>Next_insp</b>	Due date for next inspection.

## **APPENDIX D: Denver RSD versus IM240 Fleet Correlations and IM Evaluation**

To measure the correlation between on-road RSD data and local IM240 program data pollutant measurements from both methods were converted to common units; namely, g of pollutant per kg of fuel. IM240 data, including all “fast pass” estimates, are reported in g/mi, which is easily converted by multiplying first by the miles per gallon of the vehicle (measured during IM240) and then by the inverse of the density of gasoline (0.33295 gal/kg). Converting RSD data to g/kg is achieved directly by first converting the pollutant ratio readings to the mole to mole ratios and then to weight ratios as described in the introduction.

This analysis shows that fleet averaged on-road remote sensing data correlate very well versus fleet average IM240 data. We have demonstrated this previously<sup>1</sup> with four data sets from Denver: RSD January 2000, RSD January 1999, RSD January 1997 and RSD January 1996 correlated versus IM240 for the first half year of 2000, the whole year in 1998, 1996 and 1995, respectively. For the current year’s report the 2001 RSD data has been correlated to the December 2000 IM database. Figure D1 shows average emissions for each measured model year. There are many more cars in the newest model years. The plots illustrate that, though the slopes of the correlations are not all one, the relationships are mostly linear as seen previously. Furthermore, the excellent correlations ( $r^2$  in every case greater than 0.95) are repeated with the current data.

All of the IM240 records from December of 2000, including the calculated FAST-PASS emissions, were used, giving approximately 80,000 measurements. The IM database that we obtained included a significant number of other entries that did not have emission measurements. These entries were excluded, as they appeared to be duplicates generated during the data extraction process. The RSD HC data has been offset corrected.

In this set of correlations we are only using IM data that are at most a month old relative to the RSD data. This is in contrast to earlier reports (where the entire previous year’s IM data are used) and last year’s report (where data from six months after the RSD were used). Nonetheless, the IM database contains enough records so that the slopes, intercepts and level of correlation are very similar to those previously reported.

In addition, an analysis of IM CO benefit and loss of this benefit over time as measured by RSD was conducted. This was accomplished by studying those vehicles measured during the current year’s RSD campaign which also had records of IM failures in the previous two years due to excessive CO emissions. Such dissection of the data revealed some interesting insights. There were 595 individual vehicles measured by the current RSD study that had records of at least one IM240 failure in the past two years due to excessive CO emissions. Of these, 42 never went on to pass the IM and yet were measured at an on-road site well within the Denver IM program area. Only two of these 42 had failed IM in the 60 days before RSD measurement so that they may be written off as still to undergo repairs.

---

<sup>1</sup> See CRC E-23 report: “On-Road Remote Sensing in the Denver Area: Year 1,” Appendix D.

Figure D2 depicts CO in g/kg of fuel as measured by RSD. These values are plotted as a function of the time since the last IM240 test, averaged into 60 day bins. It can be seen that much of the CO decrease seen soon after IM testing and repair is temporary. Within a year, the average on-road CO emissions of past IM failers stabilizes to a higher level. This level is approximately  $174 \pm 24$  g/kg as seen in the plot (Uncertainty is 95% confidence interval of mean where samples are averages of bins 330 to 690); the average on-road CO of all past failers is  $152 \pm 8$  g/kg. Uncertainty is again 95% confidence interval of mean, but samples are daily averages.

Using the IM database, it is found that the average CO emissions of vehicles during failures is  $352 \pm 7$  g/kg. When these vehicles come back to pass, they have average emissions of  $110 \pm 2$  g/kg (69±3% reduction). Uncertainty is 95% confidence interval using monthly IM averages as samples. However, if we use RSD to assess the endurance of the repairs it is seen that a significant portion of this CO benefit is lost after a year. The stable level of average emissions ( $174 \pm 24$  g CO/kg fuel) is only a 51±9% reduction. Though the long-term reduction is significant, this average level of CO emission is criteria for IM240 failure. These results seem to indicate that the IM240 CO benefit calculated from in-program data is only short-term. The long-term benefit is significantly less, and an independent on-road method such as RSD must be used to evaluate this effectively.

In fact, if we extend the plot in Figure D2 back to RSD measurements before IM tests to effectively produce an LBNL plot<sup>2</sup>, we can see the true effects of IM on on-road emissions. Such plots are included in Figure D3. The RSD data in D3 are obtained from Denver CRC measurements in January of 2000 and 2001. The IM data are the Colorado dataset for 2000. The first plot in D3 includes all RSD measurements with IM records in 2000. The second plot contains only measurements of vehicles with failing records in the 2000 IM database.

The plots indicate a statistically significant IM benefit even in terms of the whole fleet. By extrapolating the regression lines of RSD measurements before and after to the origin, one can obtain a quantitative measurement of this benefit. Uncertainties are determined as the 95% confidence intervals on the intercepts. This type of analysis gave an immediate overall fleet IM benefit of 29±23% for CO. The benefit for IM failers is calculated to be 75±44% immediately after testing. However, it must be noted once again that much of this emission reduction is lost within a year after IM testing. In fact, average emission of failers seem to return near pre-IM levels within a year.

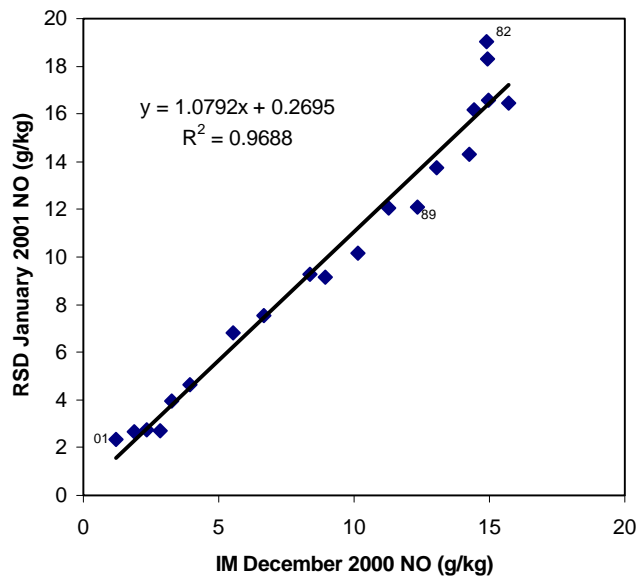
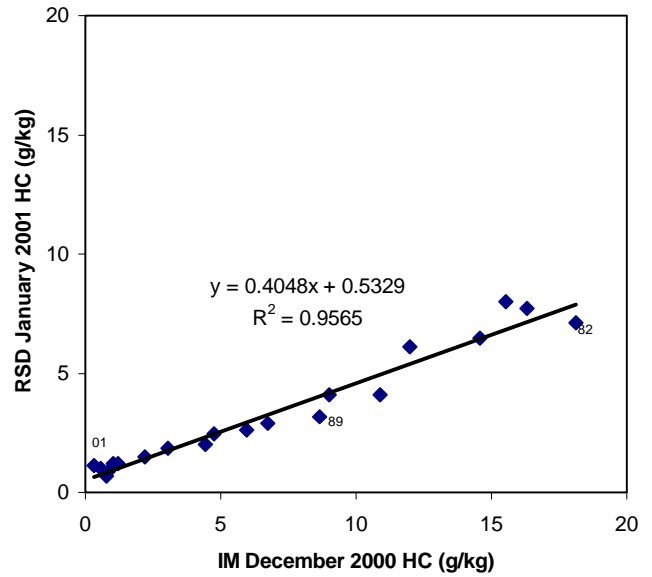
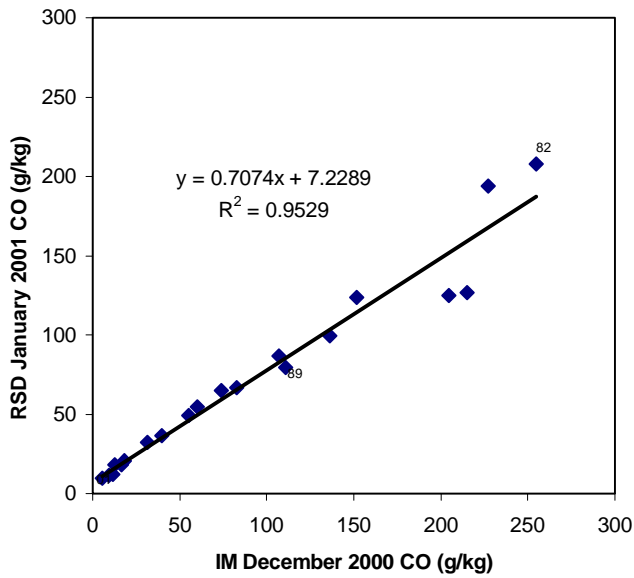
This almost total loss of IM benefit is in contrast to the results seen above where IM data are used to assess pre-IM CO levels of failers. It can be seen that the pre-IM average CO levels (of failers) measured by IM240 is significantly higher than on-road RSD measurements. The correlations (Figure D1) of IM240 and RSD model year averaged g/kg data shed some light towards the cause. The regression of IM240 vs. RSD shows

---

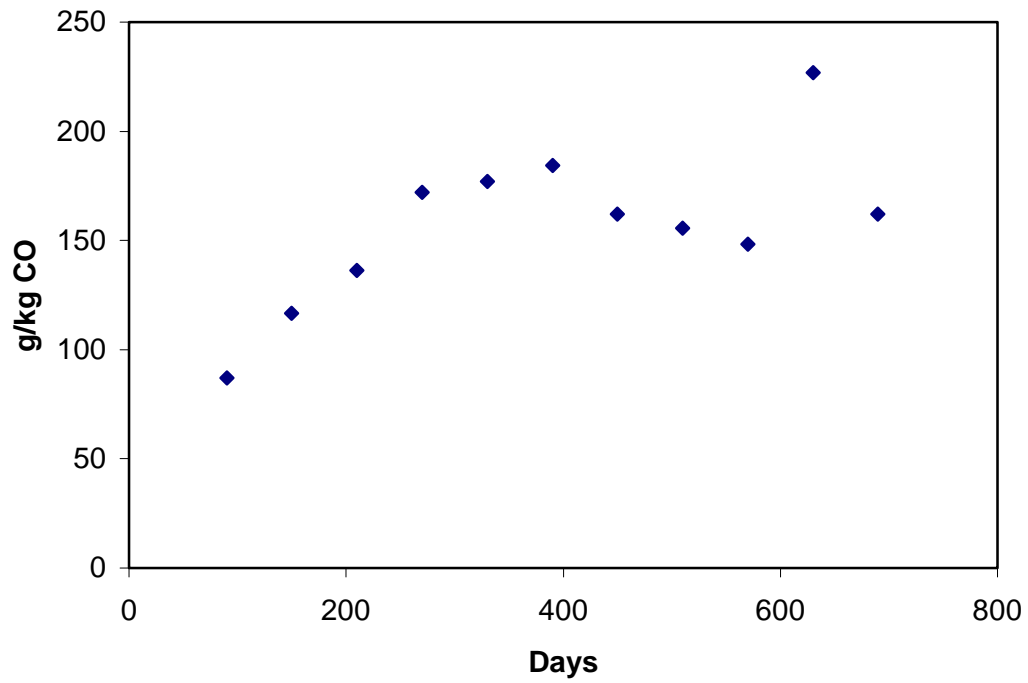
<sup>2</sup> Wenzel, T. "Evaluation of Arizona's Enhanced I/M Program." presentation at the 9<sup>th</sup> CRC On-Road Vehicle Emissions Workshop, San Diego, CA, April, 1999.

that RSD CO values are 70% of IM240 values. However, the linearity of the correlation indicates that a difference in average g/kg emissions seen by RSD should correspond to a difference in g/kg (and consequently g/gal) emissions seen by IM240. Thus, the almost total loss of IM CO benefit seen by the LBNL analysis using RSD data should also occur in an analysis using IM240 data.

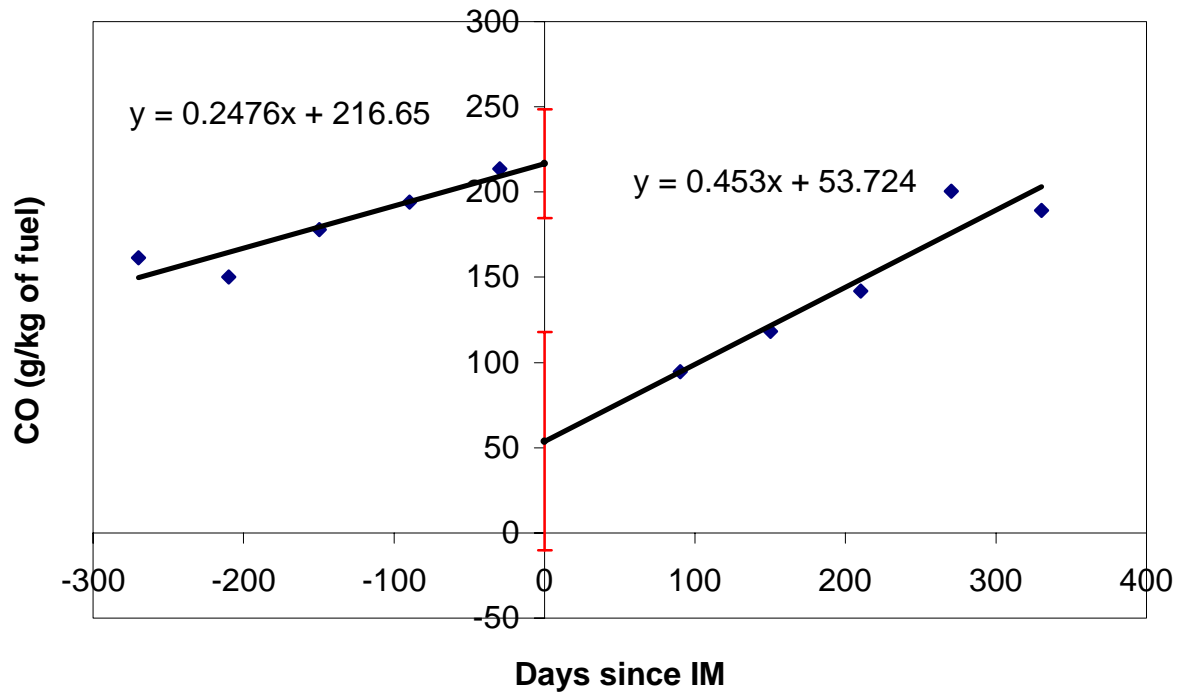
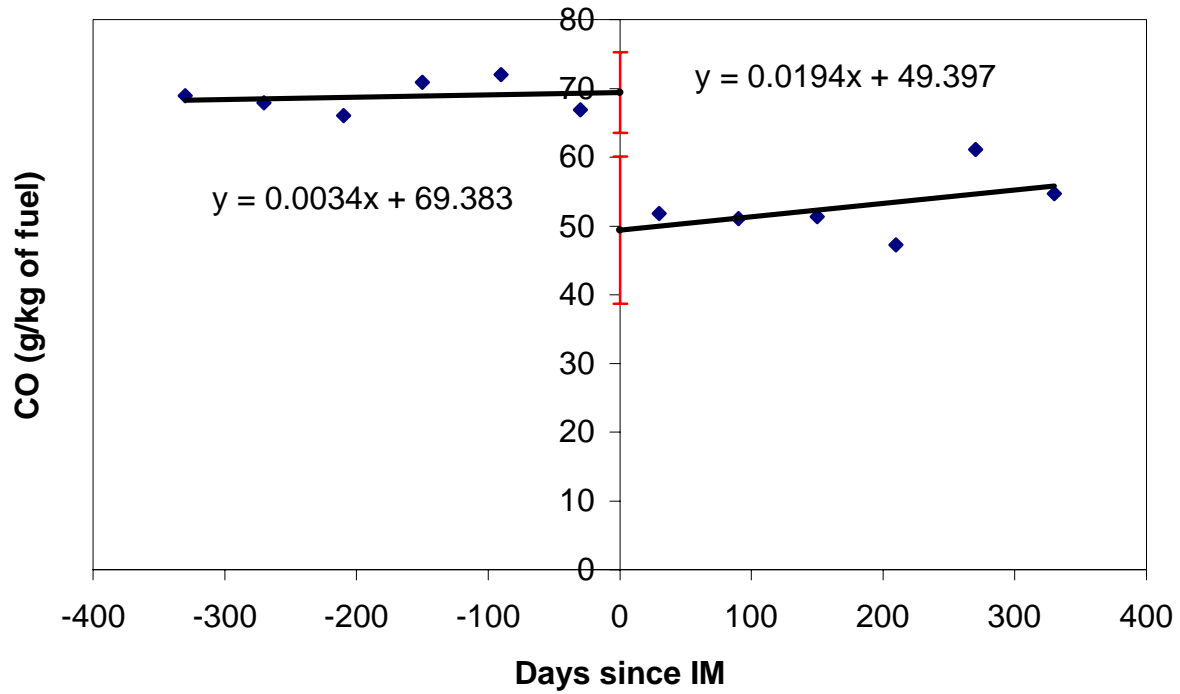
IM data show an average decrease from  $40.1 \pm 0.6$  g/kg to  $15.1 \pm 0.3$  (a  $62 \pm 2\%$  benefit) for HC and a decrease from  $49.1 \pm 1.3$  to  $28.6 \pm 1.4$  ( $42 \pm 6\%$  benefit). On-road RSD data indicate no difference between pre and post IM HC and NO levels, however.



**Figure D1:** Correlation plots for three pollutants between Denver IM240 and RSD. The IM240 data are from a month of testing before the RSD data collection, which consisted of a week of measurements in the January of 2001. Each point represents a model year. Three model years are labeled.



**Figure D2.** Plot of average CO emissions measured by RSD of vehicles with records of past IM failures (for CO) as a function of time since last IM240 test. Data are averaged in 60 day bins.



**Figure D3.** LBNL plots of RSD measurements (Denver January 2000 and 2001) as a function of time since IM testing (Colorado 2000). 60 day bin averages. First plot is all vehicles with IM records in 2000. Second plot is only vehicles with at least one fail record in 2000 IM.

**APPENDIX E: Calculation of Vehicle Specific Power Adjusted  
Vehicle Emissions (Chicago 1997-8 data)**

<b>1997 (Measured)</b>	VSP Bin	Mean NO (ppm)	No. of Measurements	Total Emissions
	-5	247	228	56316
	-2.5	235	612	143820
	0	235	1506	353910
	2.5	285	2369	675165
	5	352	2972	1046144
	7.5	426	3285	1399410
	10	481	2546	1224626
	12.5	548	1486	814328
	15	598	624	373152
	17.5	572	241	137852
	20	618	92	56856
			15961	6281579
		<b>Mean NO (ppm)</b>	<b>394</b>	
<b>1998 (Measured)</b>	VSP Bin	Mean NO (ppm)	No. of Measurements	Total Emissions
	-5	171	126	21546
	-2.5	231	259	59829
	0	252	753	189756
	2.5	246	1708	420168
	5	316	2369	748604
	7.5	374	3378	1263372
	10	418	3628	1516504
	12.5	470	3277	1540190
	15	487	2260	1100620
	17.5	481	1303	626743
	20	526	683	359258
			19744	7846590
		<b>Mean NO (ppm)</b>	<b>397</b>	
<b>1998 (Adjusted)</b>	VSP Bin	'98 Mean NO (ppm)	'97 No. of Meas.	Total Emissions
	-5	171	228	38988
	-2.5	231	612	141372
	0	252	1506	379512
	2.5	246	2369	582774
	5	316	2972	939152
	7.5	374	3285	1228590
	10	418	2546	1064228
	12.5	470	1486	698420
	15	487	624	303888
	17.5	481	241	115921
	20	526	92	48392
			15961	5541237
		<b>Mean NO (ppm)</b>	<b>347</b>	



**APPENDIX F: Calculation of Model Year Adjusted Fleet Emissions (Chicago 1997-8 data)**

<b>1997 (Measured)</b>	Model Year	Mean NO (ppm)	No. of Measurements	Total Emissions
	83	690	398	274620
	84	720	223	160560
	85	680	340	231200
	86	670	513	343710
	87	690	588	405720
	88	650	734	477100
	89	610	963	587430
	90	540	962	519480
	91	500	1133	566500
	92	450	1294	582300
	93	460	1533	705180
	94	370	1883	696710
	95	340	2400	816000
	96	230	2275	523250
97	150	2509	376350	
			17748	7266110
		<b>Mean NO (ppm)</b>		<b>409</b>
<b>1998 (Measured)</b>	Model Year	Mean NO (ppm)	No. of Measurements	Total Emissions
	83	740	371	274540
	84	741	191	141531
	85	746	331	246926
	86	724	472	341728
	87	775	557	431675
	88	754	835	629590
	89	687	1036	711732
	90	687	1136	780432
	91	611	1266	773526
	92	538	1541	829058
	93	543	1816	986088
	94	418	2154	900372
	95	343	2679	918897
	96	220	2620	576400
97	177	3166	560382	
			20171	9102877
		<b>Mean NO (ppm)</b>		<b>451</b>
<b>1998 (Adjusted)</b>	Model Year	'98 Mean NO (ppm)	'97 No. of Meas.	Total Emissions
	83	740	398	294520
	84	741	223	165243
	85	746	340	253640
	86	724	513	371412
	87	775	588	455700
	88	754	734	553436
	89	687	963	661581
	90	687	962	660894
	91	611	1133	692263
	92	538	1294	696172
	93	543	1533	832419
	94	418	1883	787094
	95	343	2400	823200
	96	220	2275	500500
97	177	2509	444093	
			17748	8192167
		<b>Mean NO (ppm)</b>		<b>462</b>

**APPENDIX G: Field Calibration Record.**

Date	Time	CO Cal Factor	HC Cal Factor	NO Cal Factor
1/5	7:30	1.96	2.2	3.1
1/5	11:45	1.13	1.05	1.32
1/6	7:00	1.57	1.42	1.84
1/6	11:30	1.41	1.35	1.66
1/8	7:05	1.67	1.6	2.32
1/8	11:30	1.18	1.1	1.6