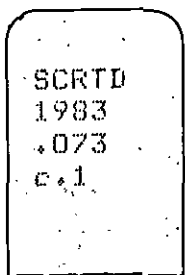


SOUTHERN CALIFORNIA RAPID TRANSIT DISTRICT

ORGANIZATION CHARTS

DECEMBER
1983



13899863

31820

S.C.R.T.D. LIBRARY

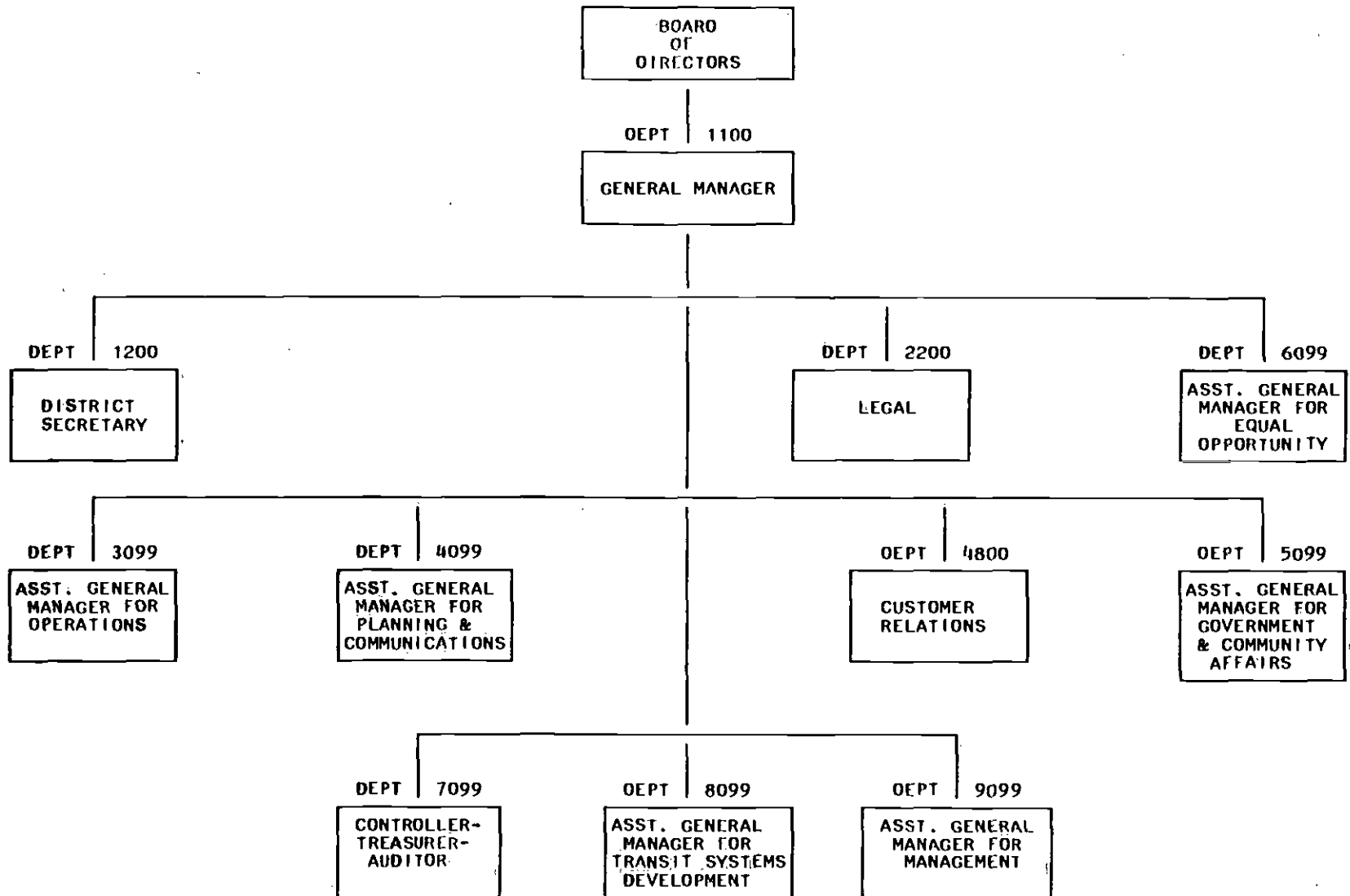
SOUTHERN CALIFORNIA RAPID TRANSIT DISTRICT
ORGANIZATION CHARTS

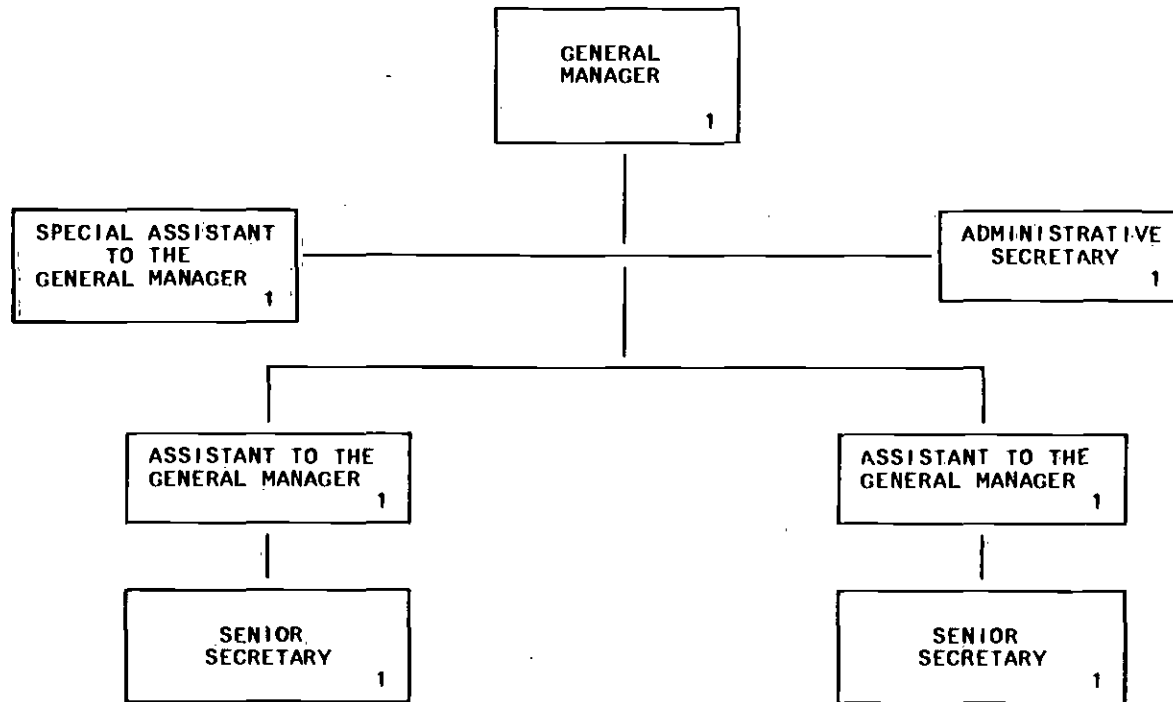
TABLE OF CONTENTS

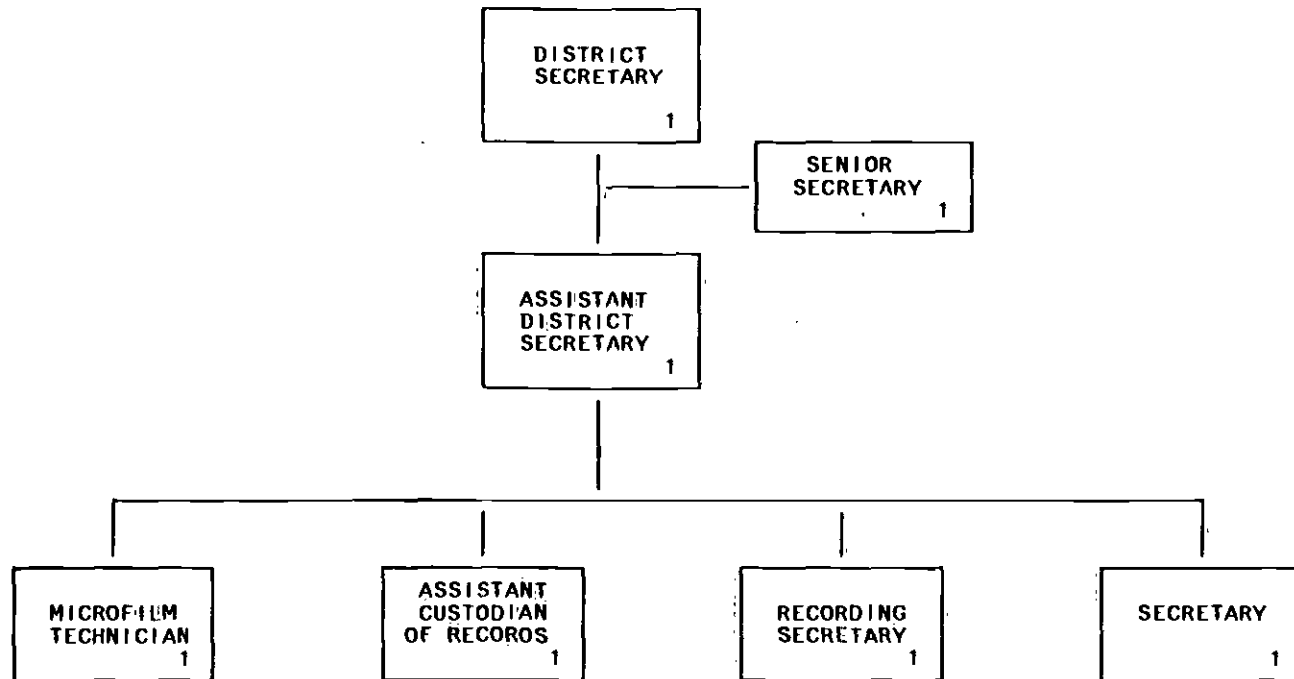
		PAGE
1000	BOARD OF DIRECTORS/OVERALL DISTRICT	1
1100	GENERAL MANAGER	2
1200	DISTRICT SECRETARY	3
2200	LEGAL	4
3099	ASSISTANT GENERAL MANAGER FOR OPERATIONS	5
3201-18	TRANSPORTATION OPERATING DIVISIONS	6-7
3291	STOPS AND ZONES	8
3296	TRANSPORTATION SERVICES	7
3297	TRANSPORTATION INSTRUCTION	10
3297	INSTRUCTION - OPERATING DIVISIONS	11-12
3299	TRANSPORTATION GENERAL	13-14
3301-18	MAINTENANCE OPERATING DIVISIONS	15-16
3314	CENTRAL MAINTENANCE	17
3334	FACILITY MAINTENANCE	18
3399	MAINTENANCE GENERAL	19
3400	EQUIPMENT ENGINEERING	20
3500	TELECOMMUNICATIONS	21
3600	SAFETY	22
3800	TRANSIT POLICE	23
4099	ASSISTANT GENERAL MANAGER FOR PLANNING AND COMMUNICATIONS	25
3900	SCHEDULING	24
4200	PLANNING	26
4400	MARKETING AND COMMUNICATIONS	27
4800	CUSTOMER RELATIONS	28
5099	ASSISTANT GENERAL MANAGER FOR GOVERNMENT AND COMMUNITY AFFAIRS	29
5100	GOVERNMENT AFFAIRS	30
5500	COMMUNITY RELATIONS	31
6099	ASSISTANT GENERAL MANAGER FOR EQUAL OPPORTUNITY	32
6100	HUMAN RELATIONS	32
6300	EMPLOYEE EDUCATION, TRAINING AND DEVELOPMENT	33
7099	CONTROLLER - TREASURER - AUDITOR	34
7100	ACCOUNTING AND FISCAL	35-36
7200	DATA PROCESSING	37-38
7400	INSURANCE	39

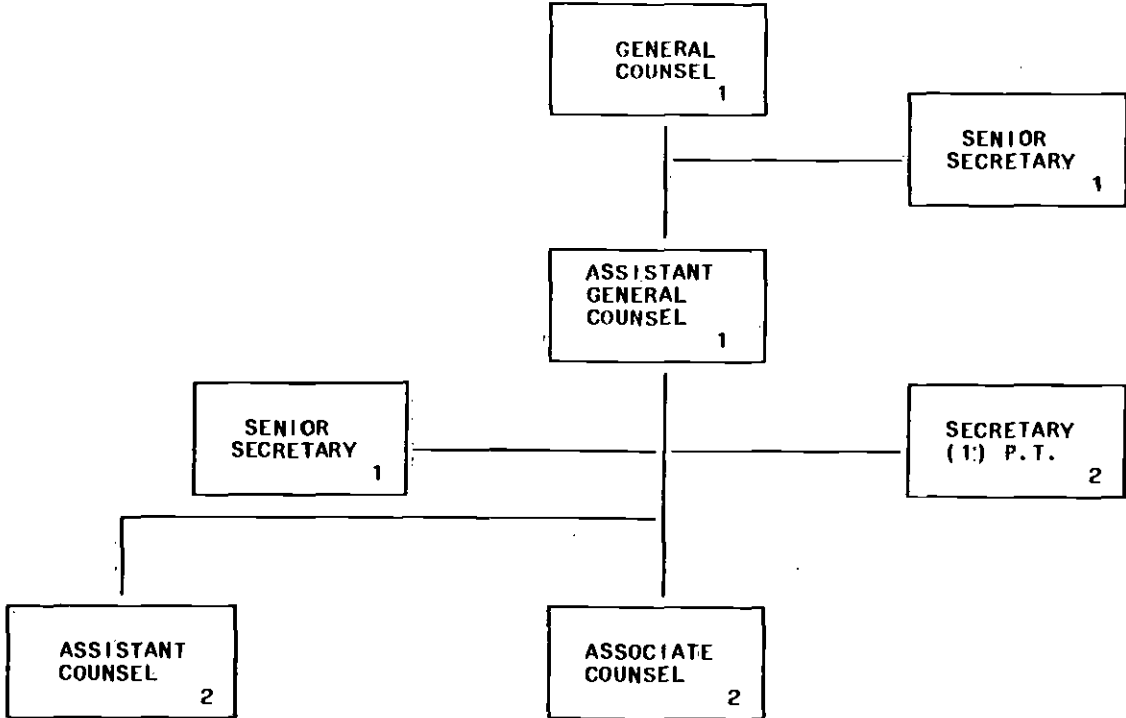
TABLE OF CONTENTS (CONTINUED)

8099	ASSISTANT GENERAL MANAGER FOR TRANSIT SYSTEMS DEVELOPMENT	40
8100	METRO RAIL - ADMINISTRATION	41
	METRO RAIL - CONSTRUCTION ENGINEERING	42
	METRO RAIL - FIXED FACILITIES ENGINEERING	43
8100	METRO RAIL - PROGRAM CONTROL	44
	METRO RAIL - REAL ESTATE AND DEVELOPMENT	45
8100	METRO RAIL - SYSTEMS DESIGN AND ANALYSIS	46
8300	BUS FACILITIES	47
9099	ASSISTANT GENERAL MANAGER FOR MANAGEMENT	48
9400	OFFICE OF CONTRACTS, PROCUREMENT AND MATERIEL	49-50
9500	PERSONNEL	51
9610	GENERAL SERVICES	52
9640	PRINT SHOP	53
9700	MANAGEMENT AND BUDGET	54
9800	LABOR RELATIONS	55
9810	EMPLOYEE ACTIVITIES	55

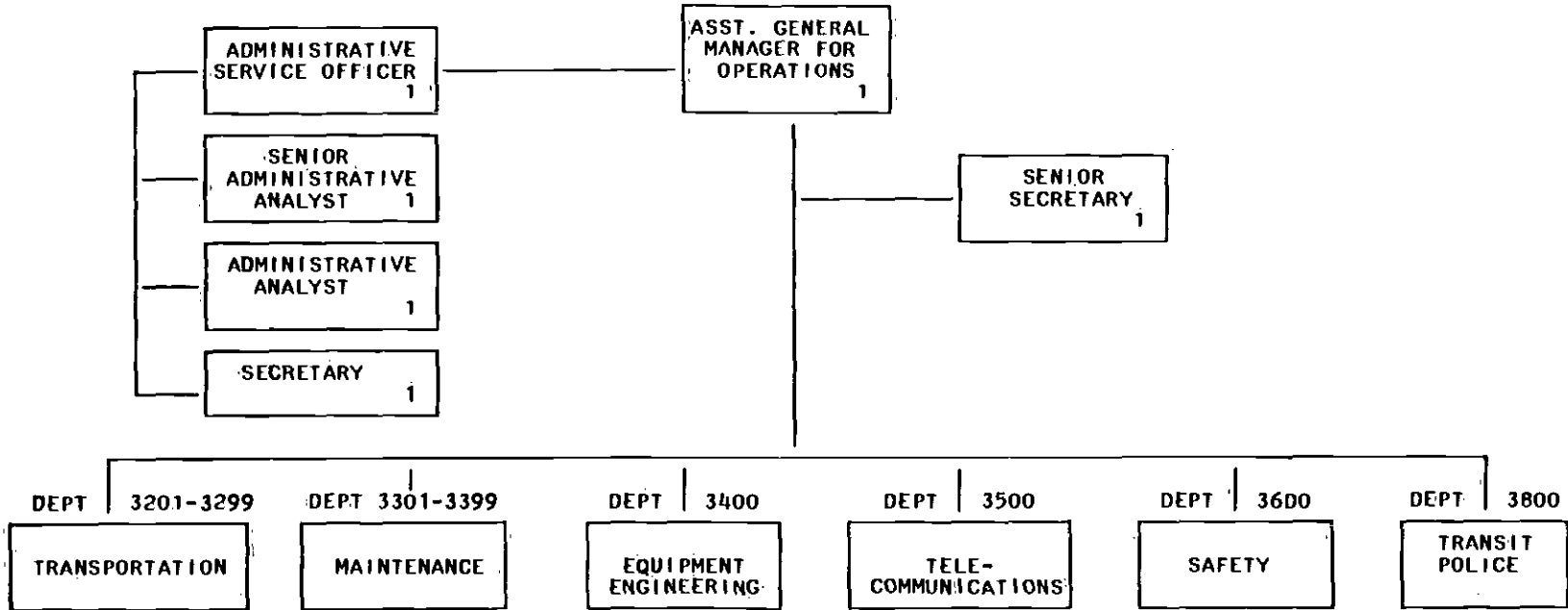






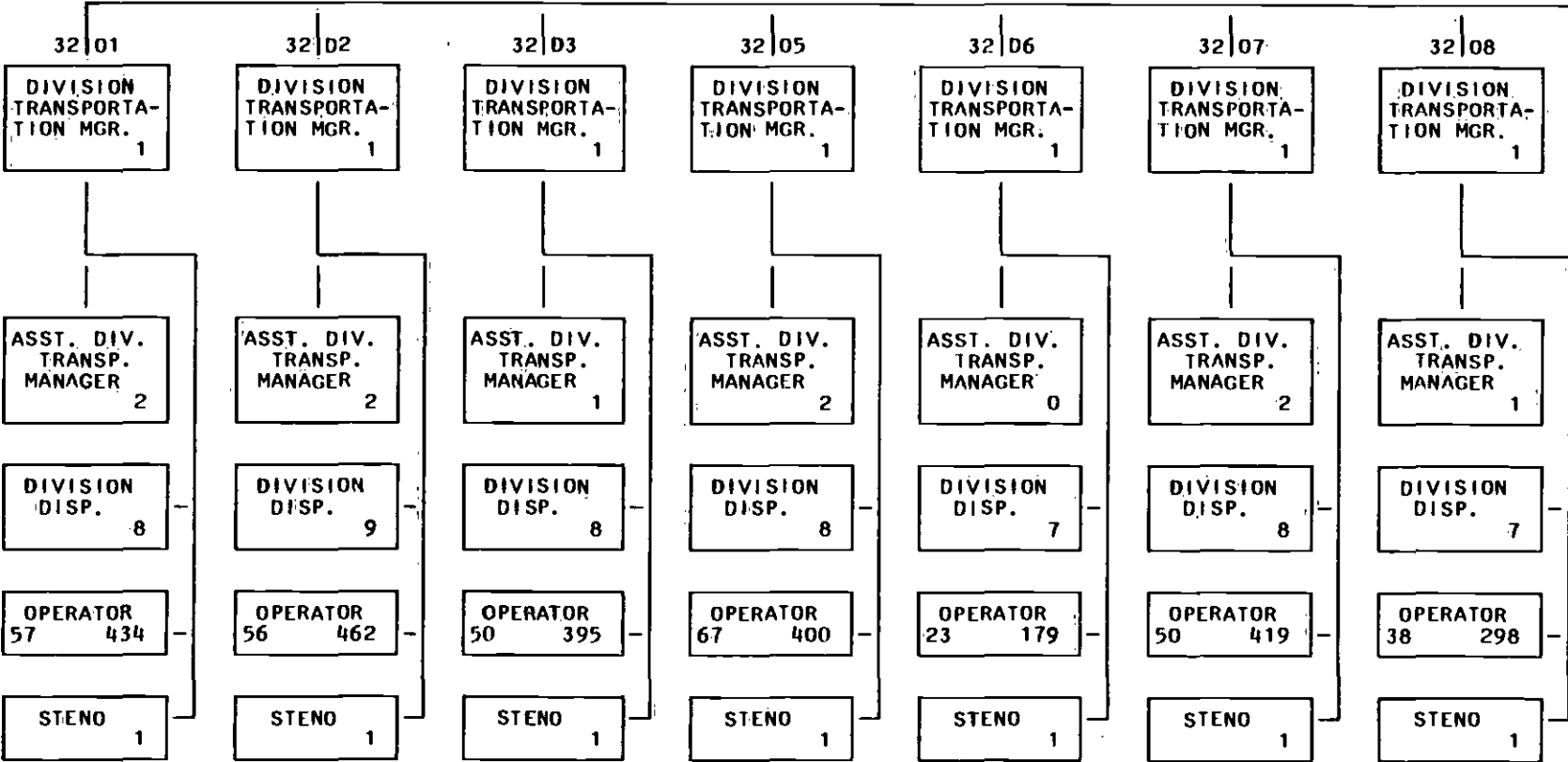


3099 - ASSISTANT GENERAL MANAGER FOR OPERATIONS

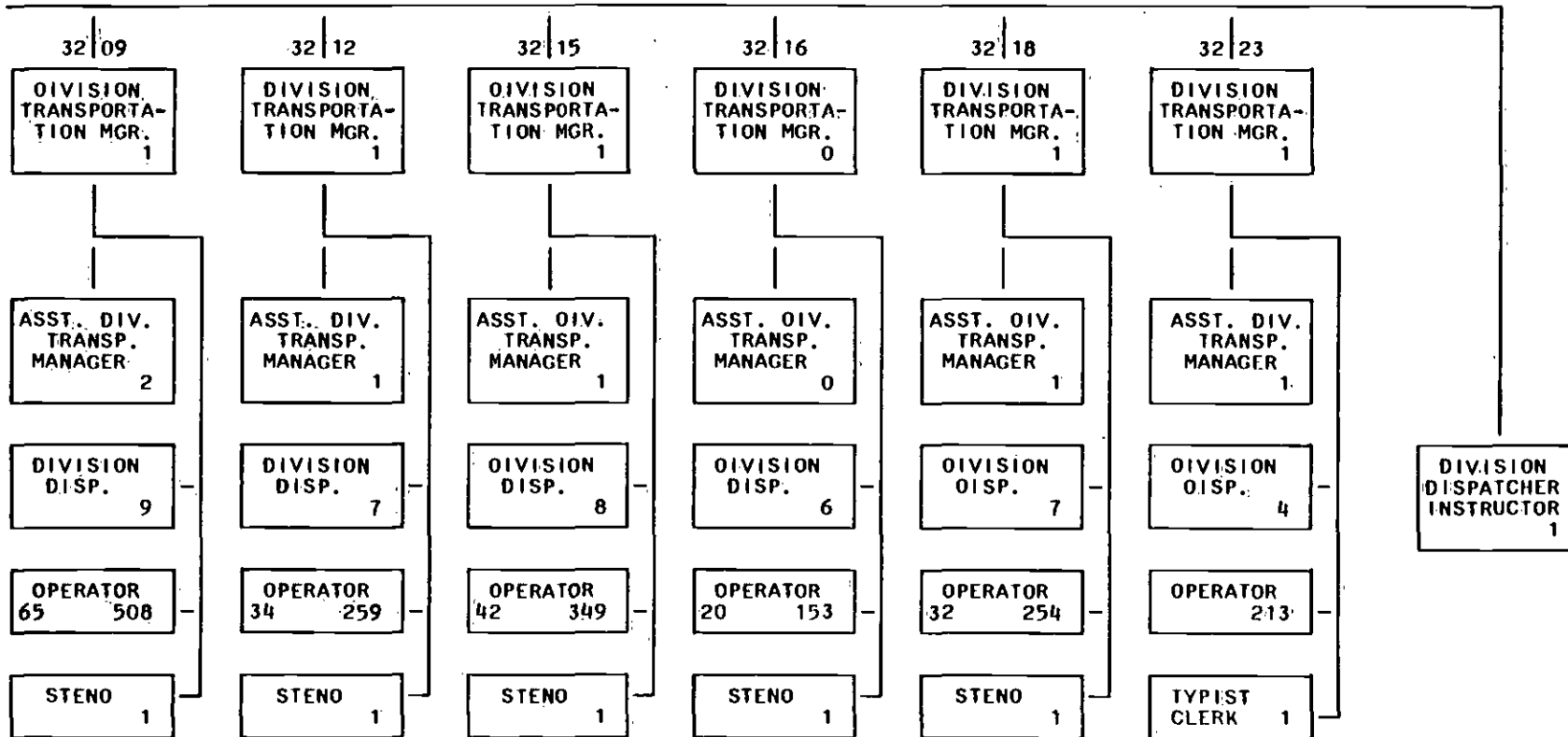


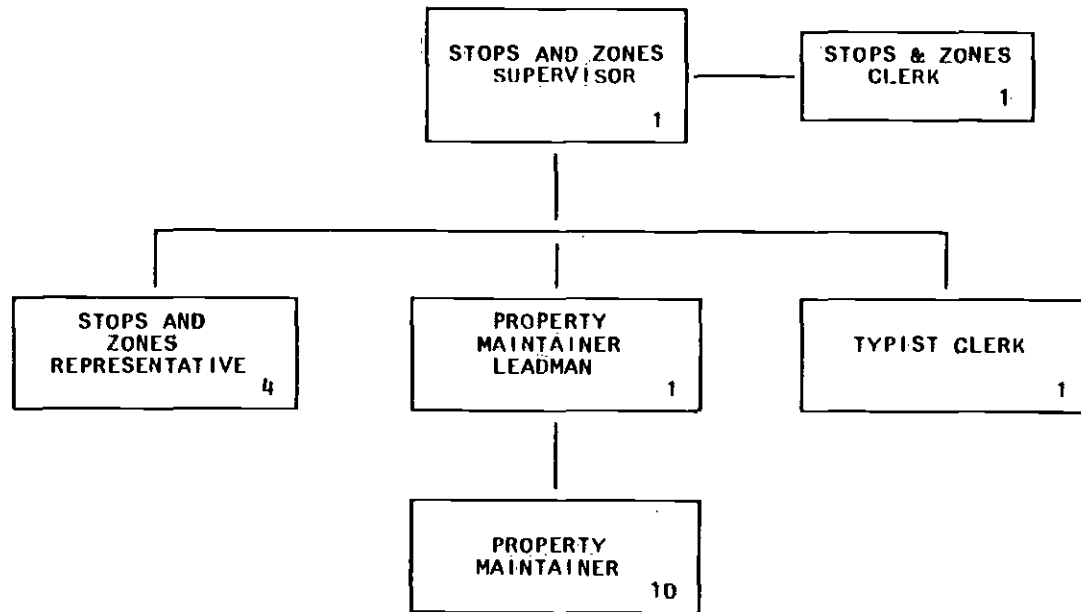
3201-18 - TRANSPORTATION
 OPERATING DIVISIONS
 (Part One of Two)

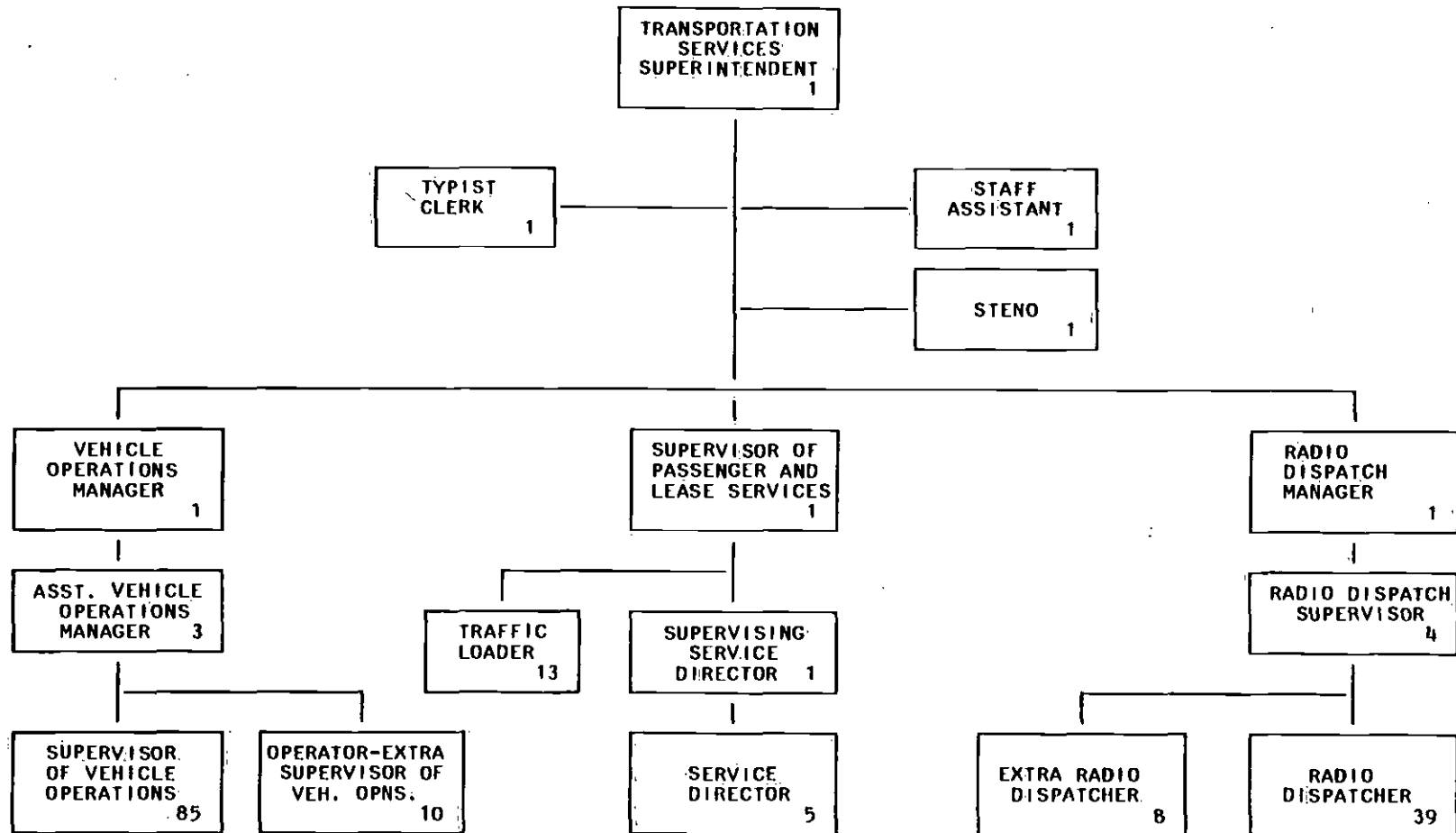
TRANSPORTATION
 SUPERINTENDENT
 2

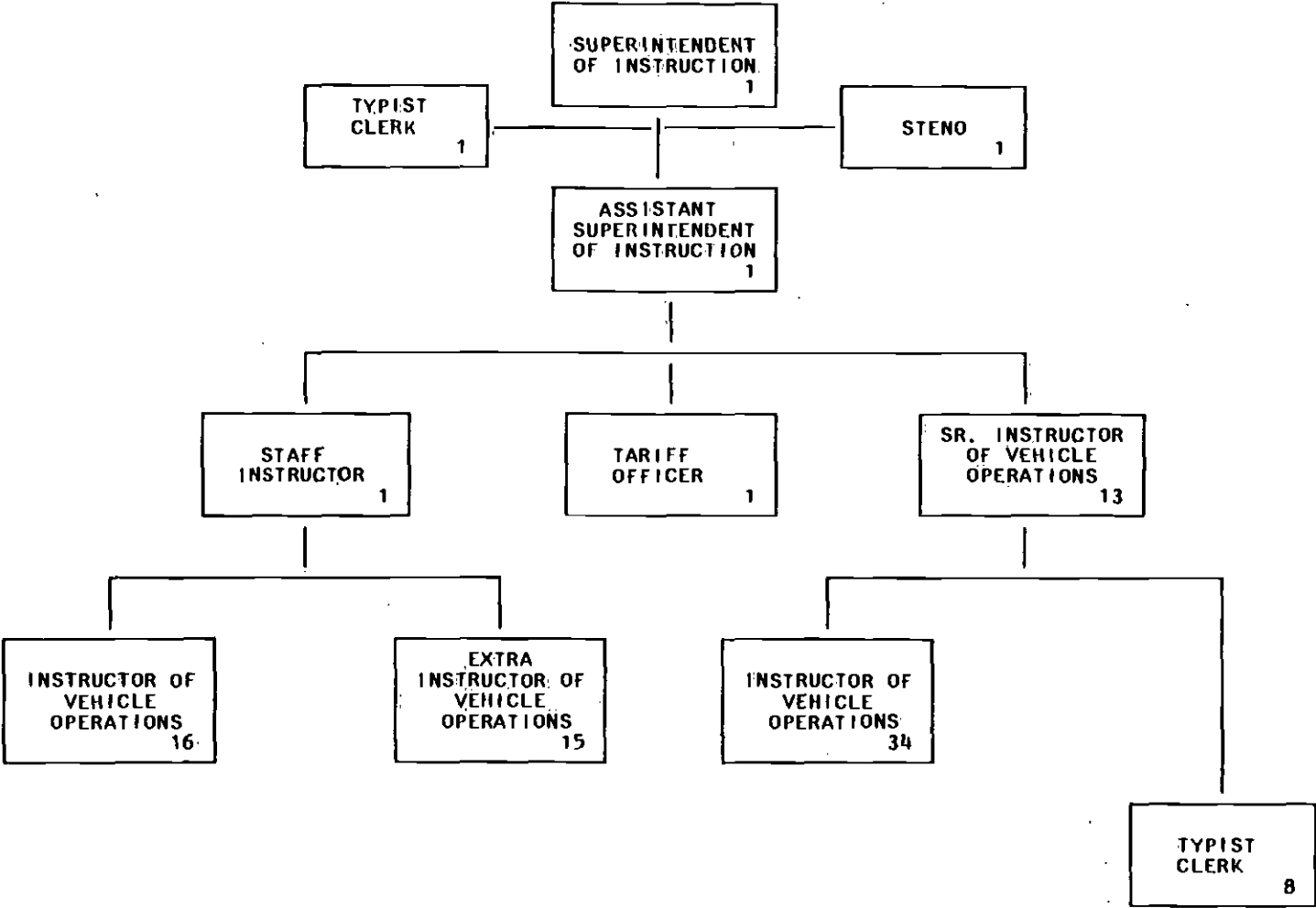


3201-18 - TRANSPORTATION
OPERATING DIVISIONS
(Part Two of Two)

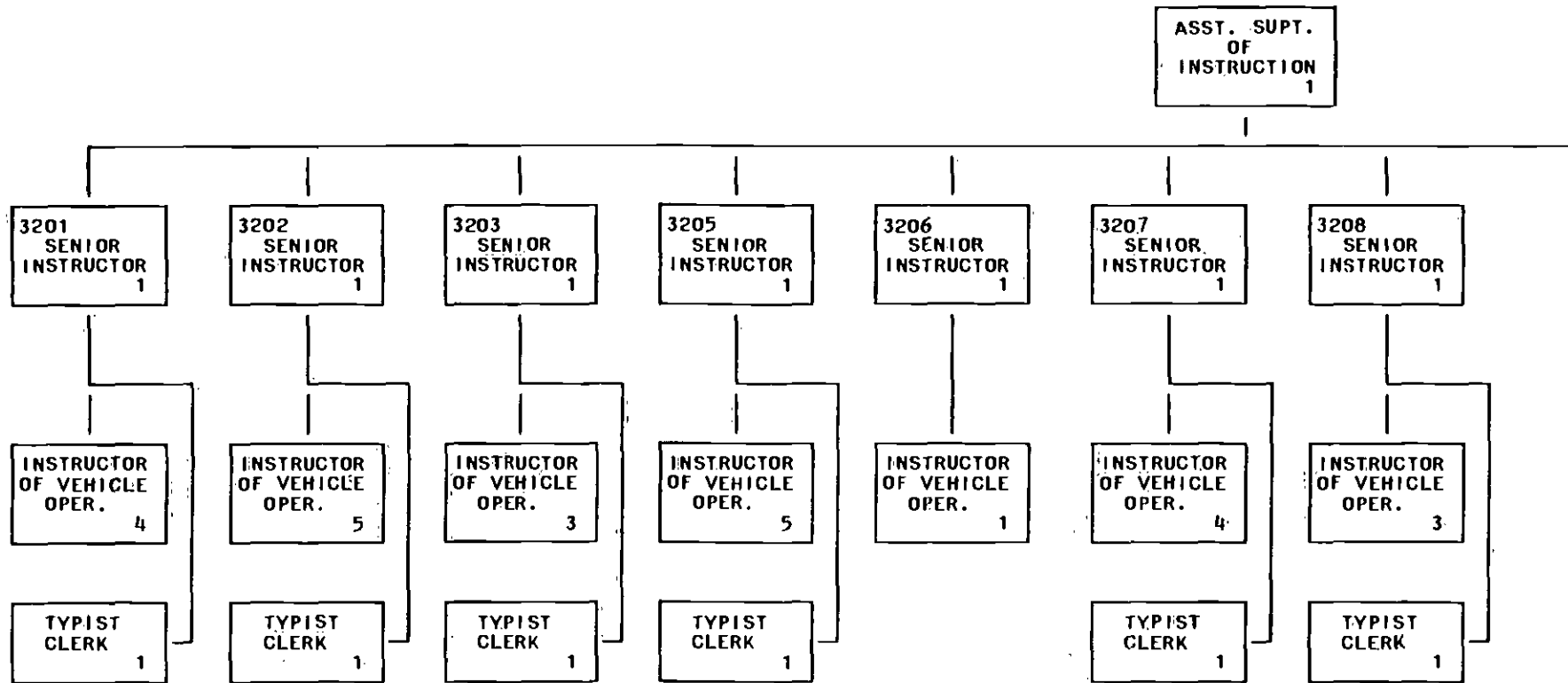






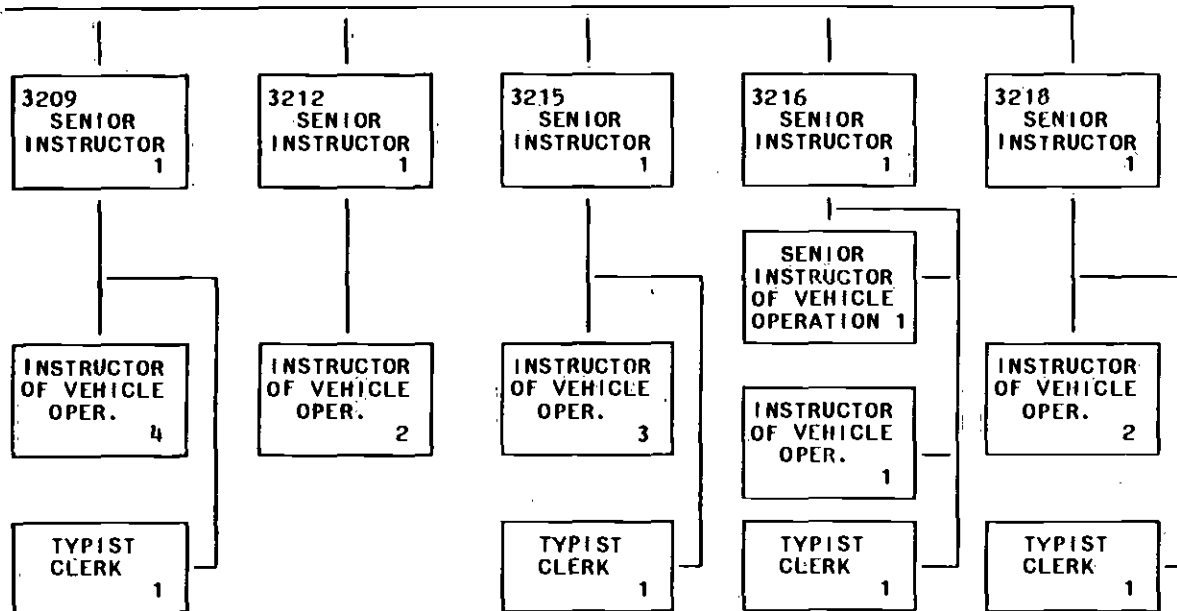


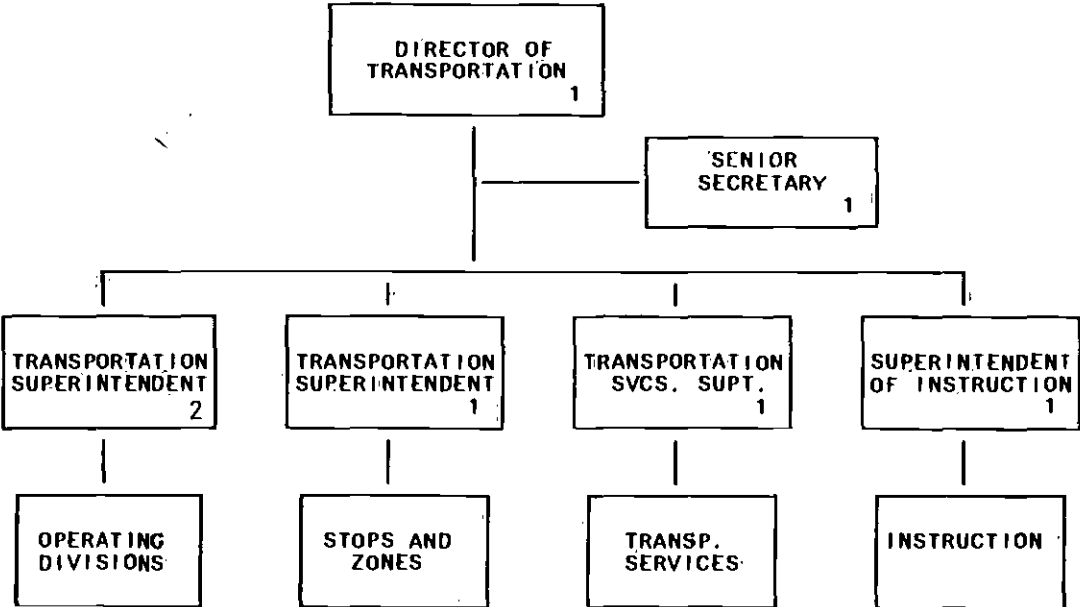
3297 - TRANSPORTATION INSTRUCTION
 - OPERATING DIVISIONS
 (Part One of Two)

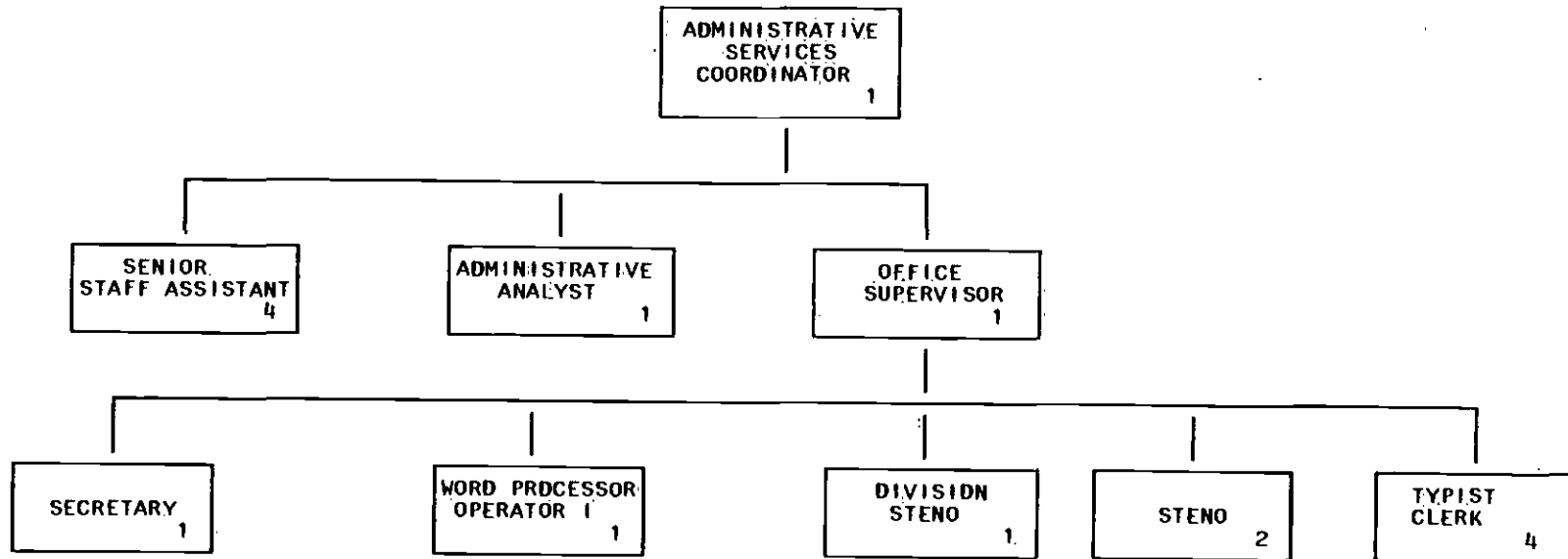


One (1) Typist Clerk shares duties between Divisions 12 & 18.

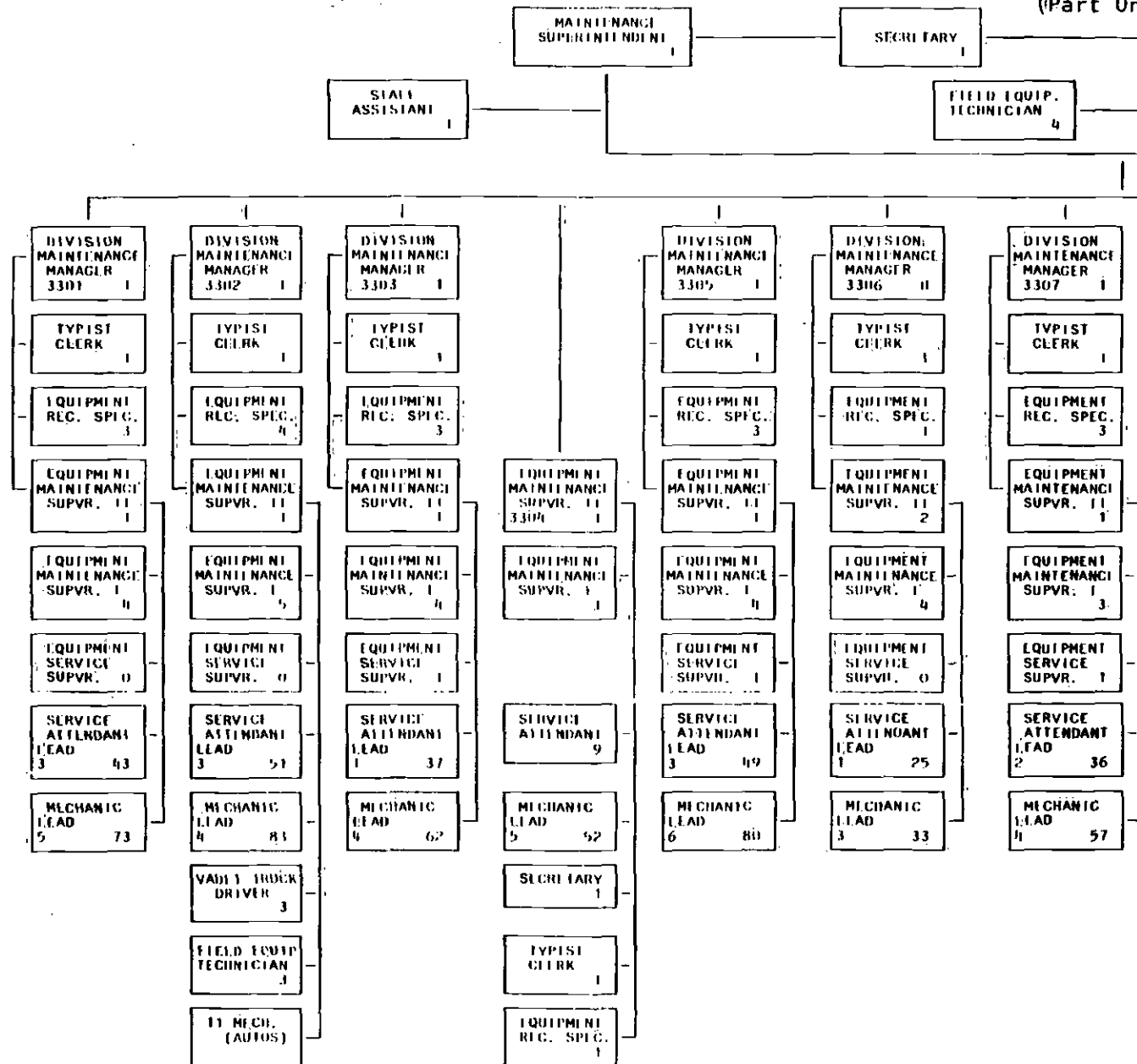
3297 - TRANSPORTATION INSTRUCTION
- OPERATING DIVISIONS
(Part Two of Two)



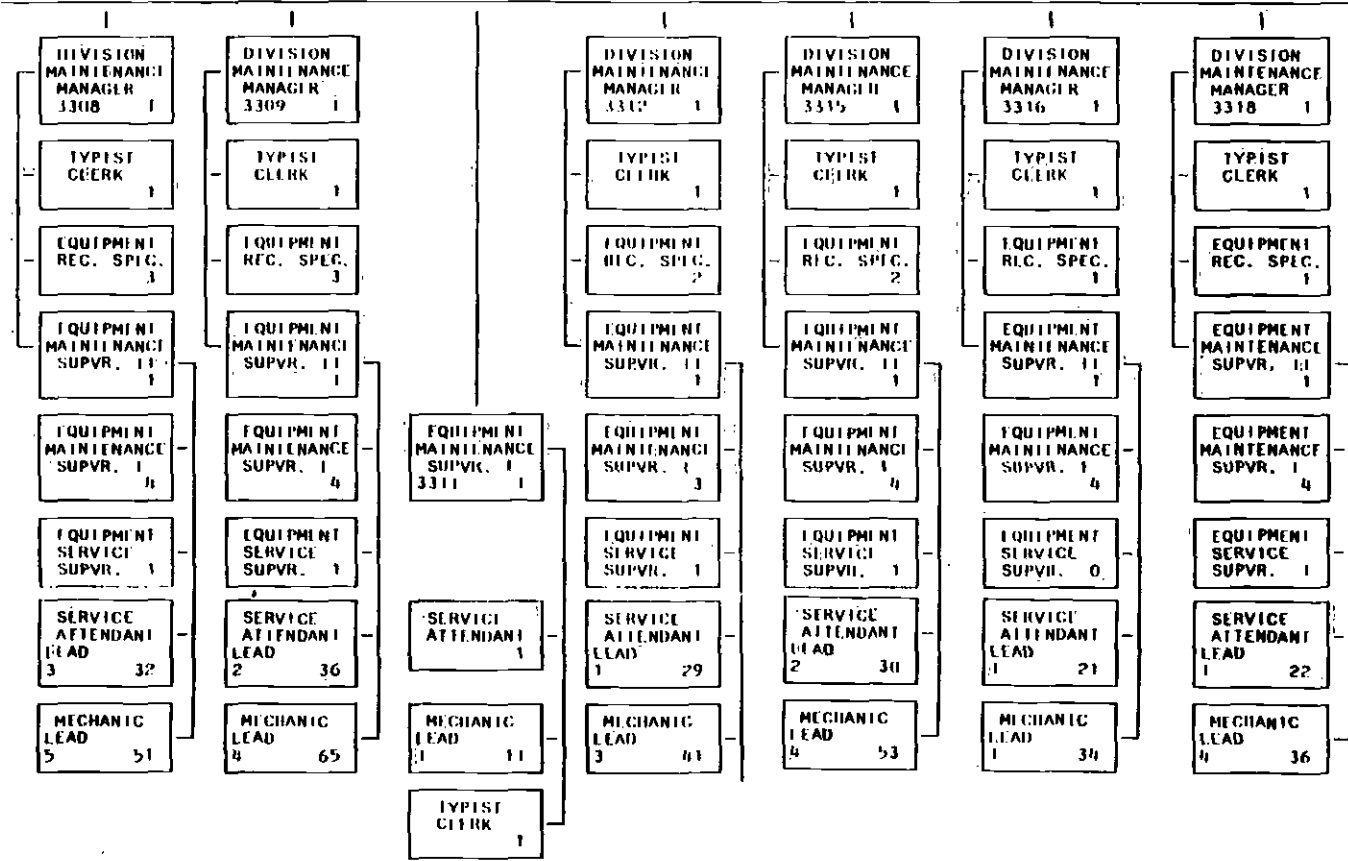
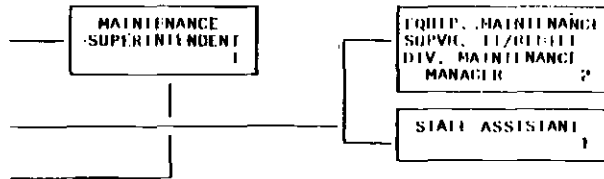


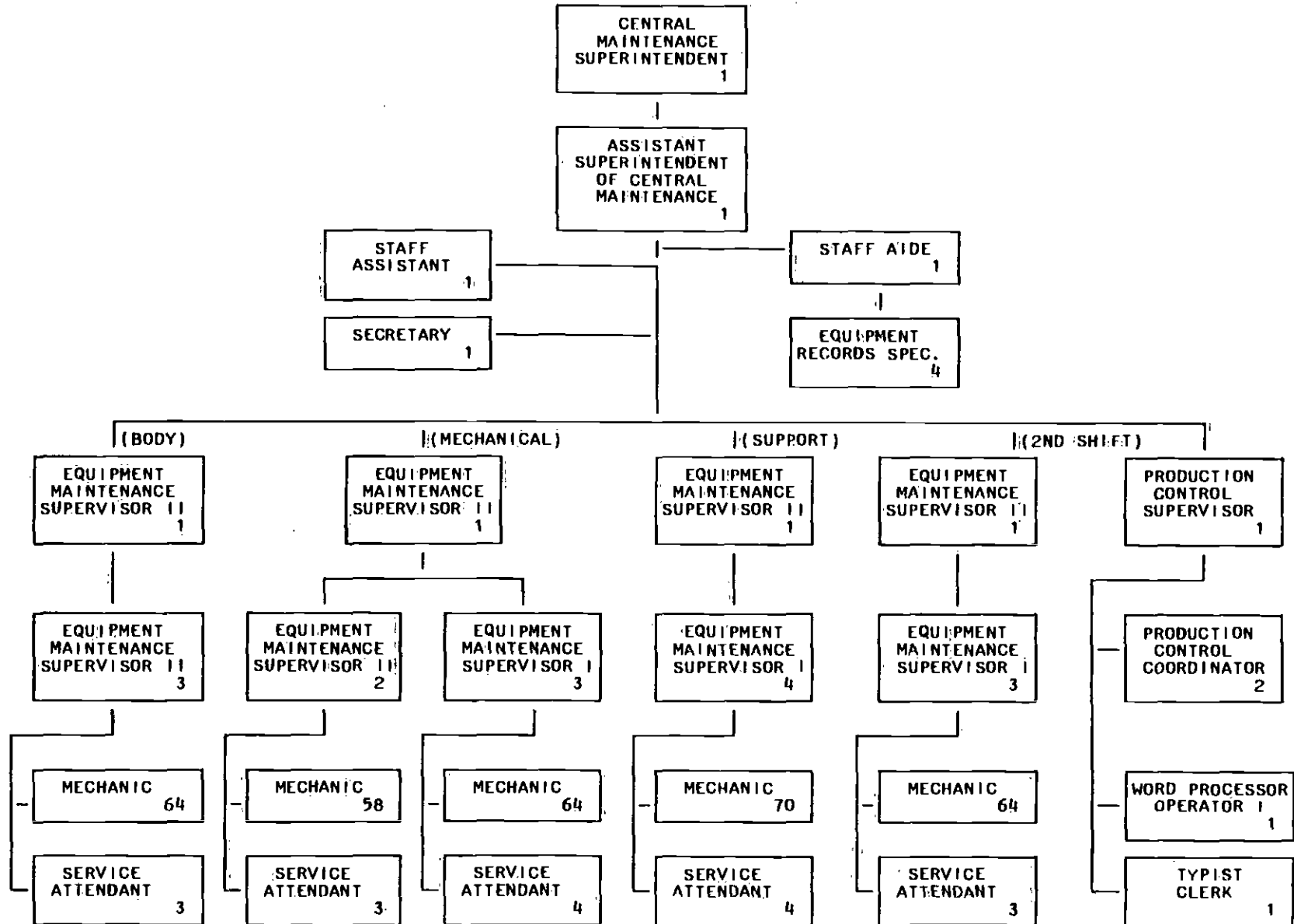


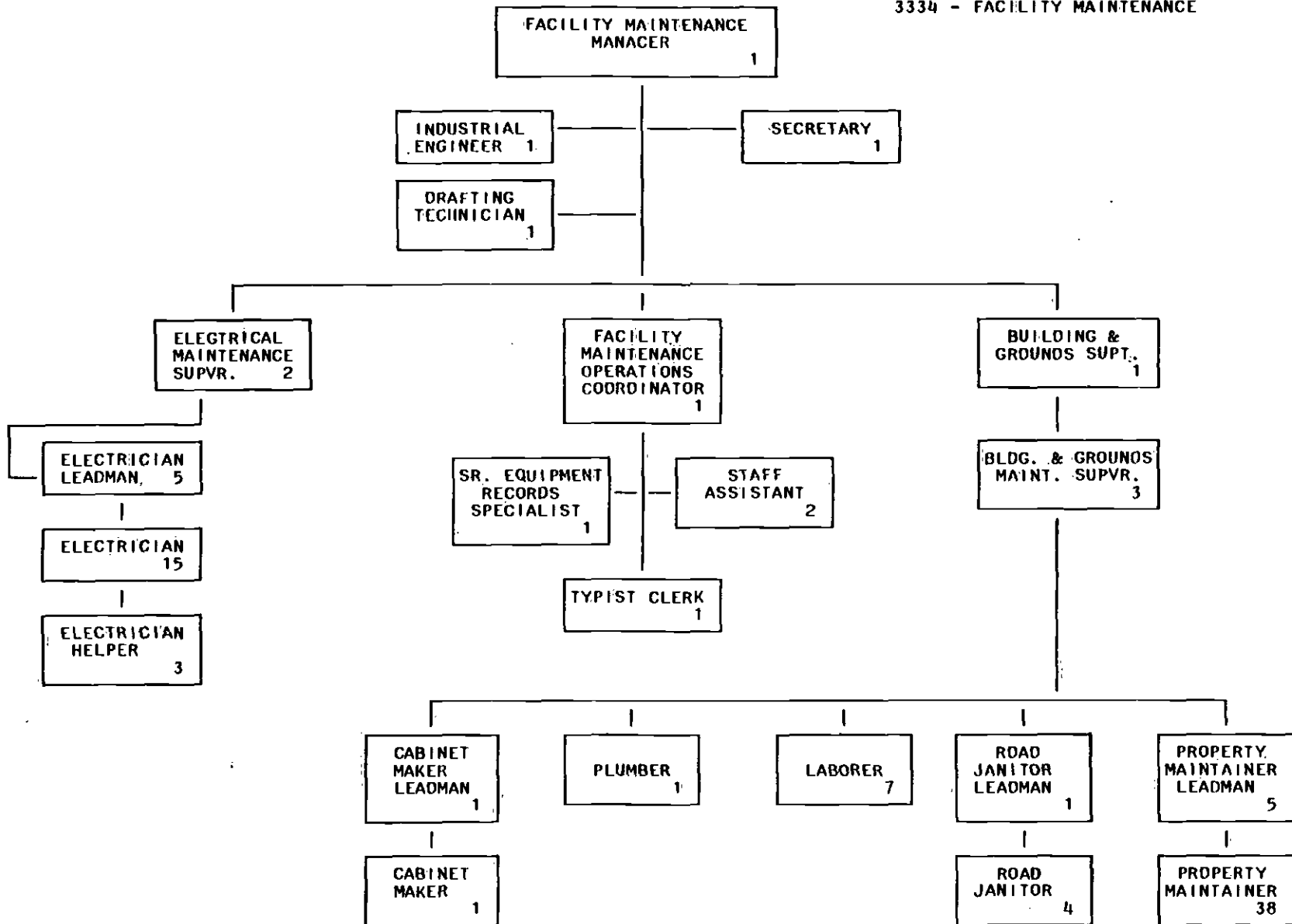
3301-18 MAINTENANCE
OPERATING DIVISIONS
(Part One of Two)



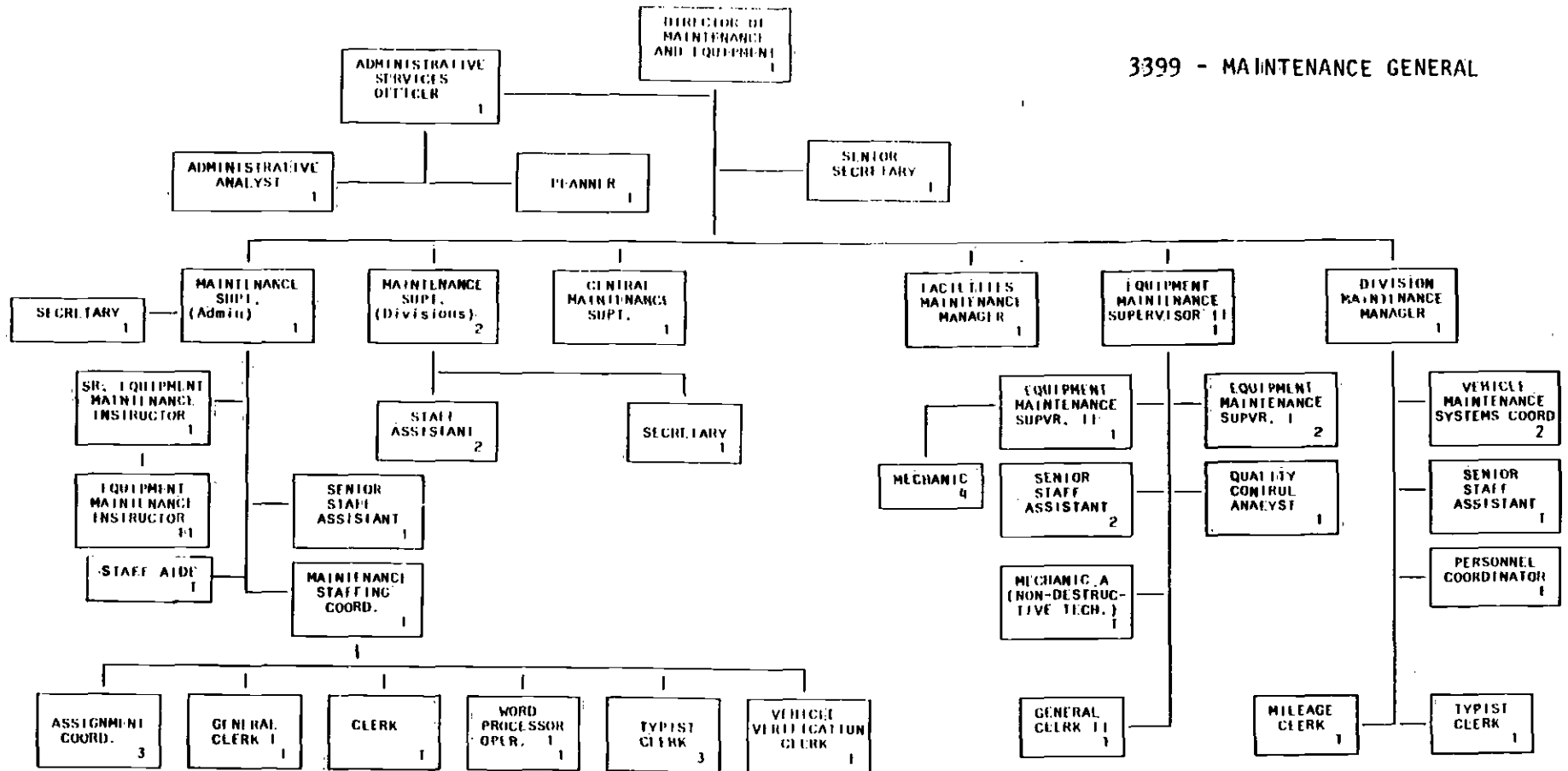
3301-18 MAINTENANCE
OPERATING DIVISIONS
(Part Two of Two)

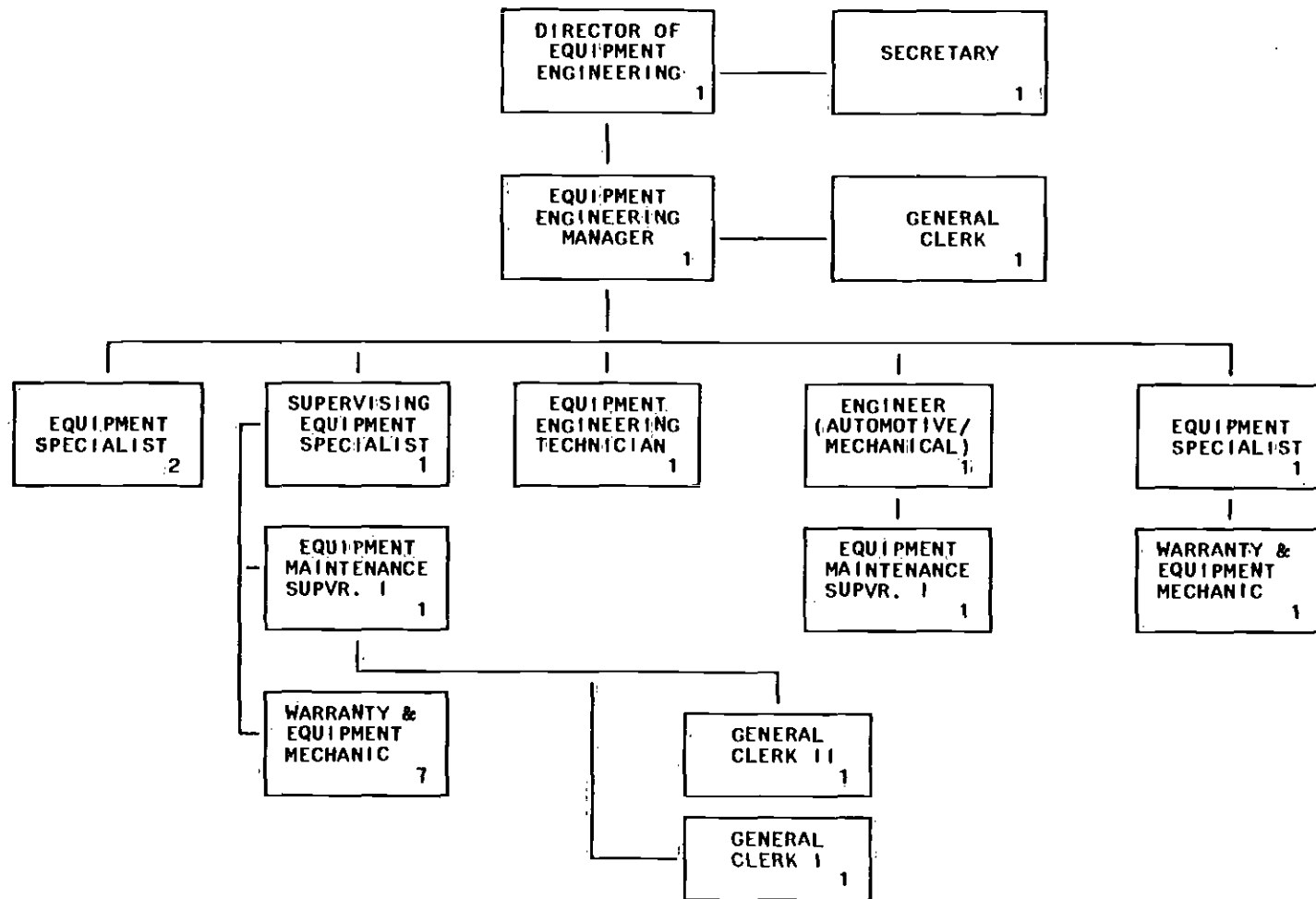


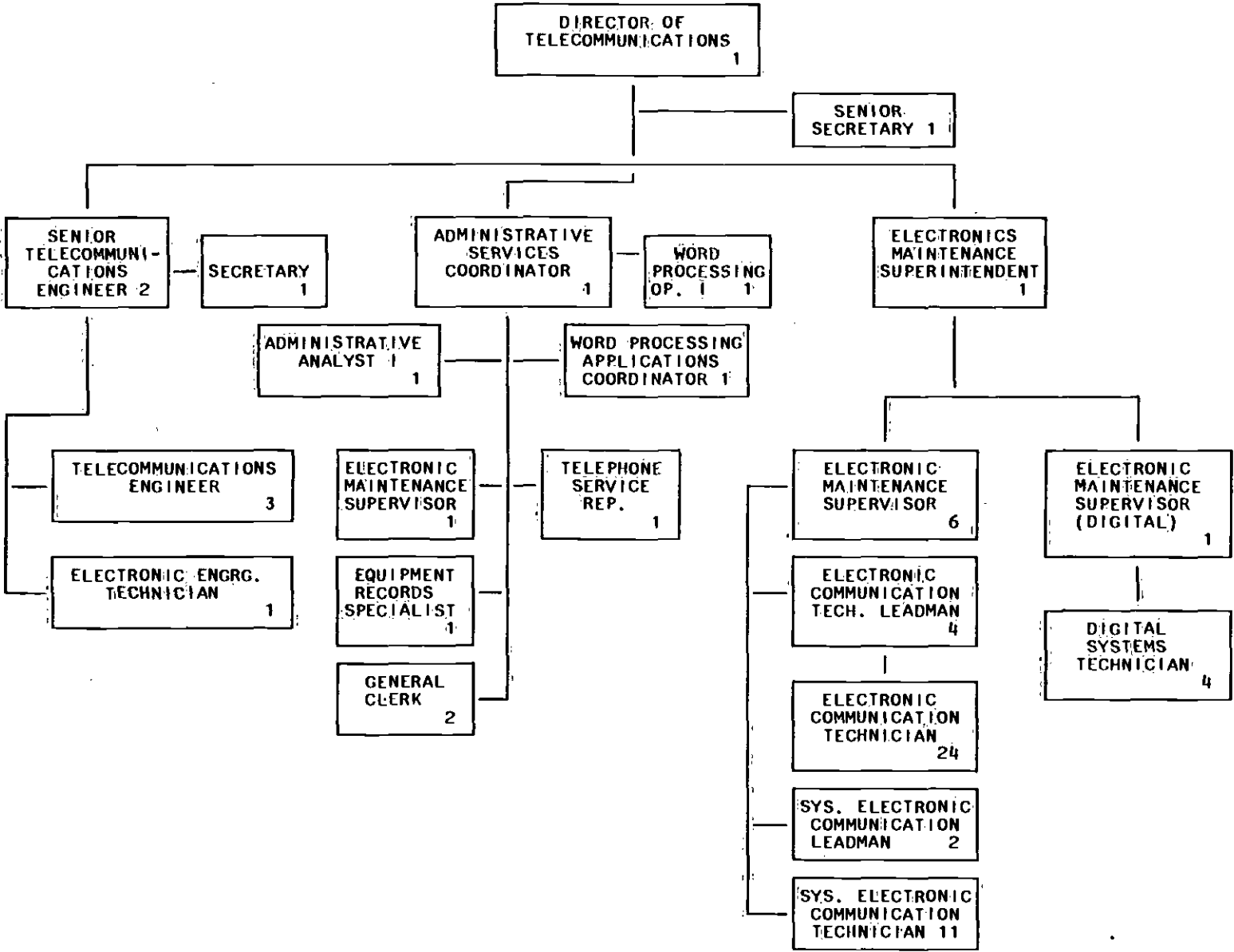


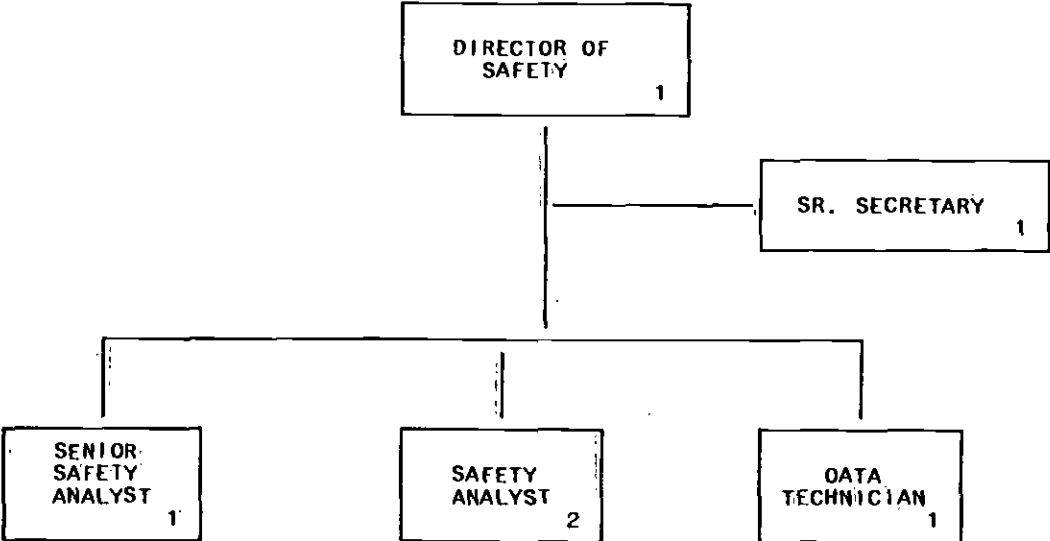


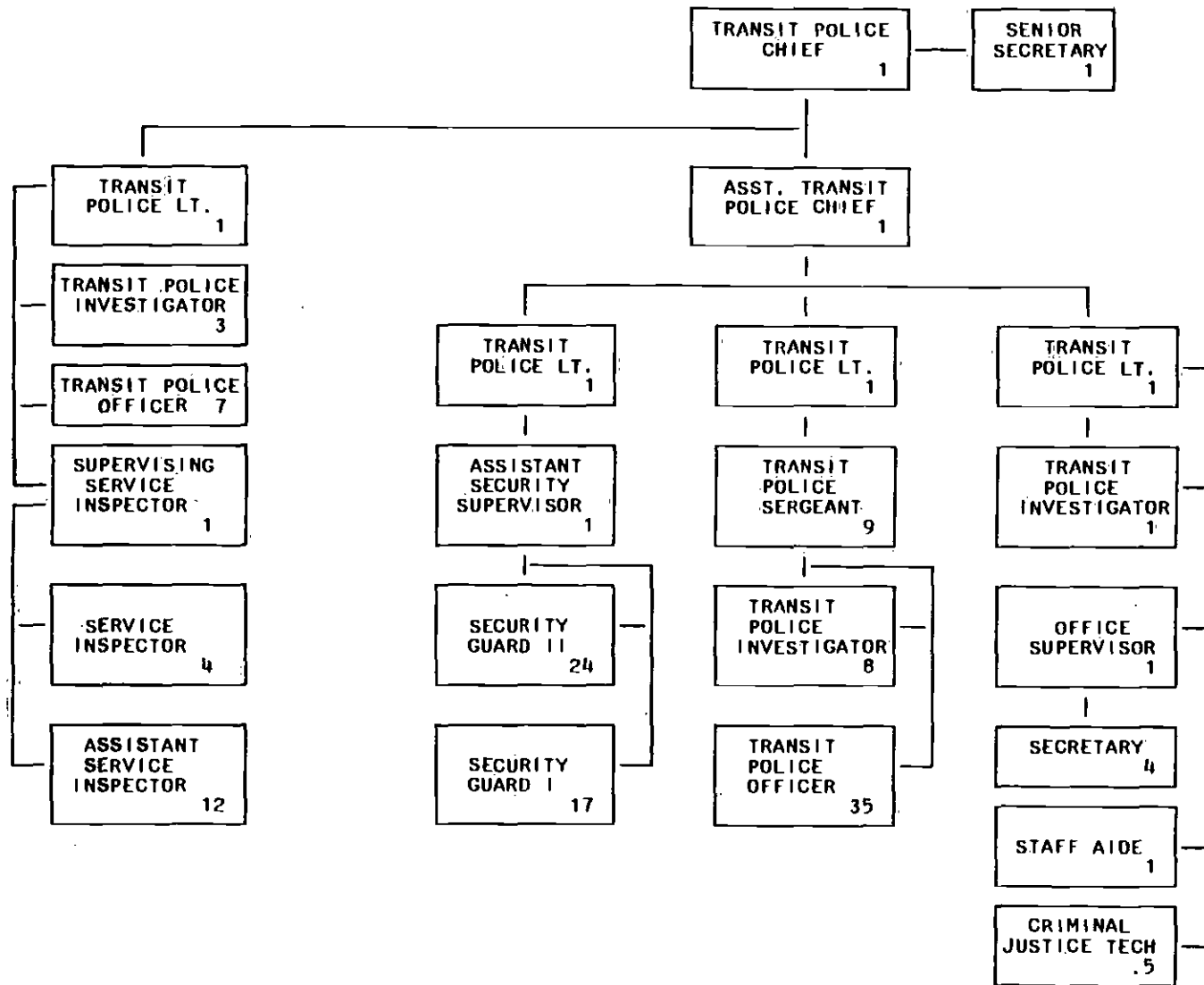
3399 - MAINTENANCE GENERAL

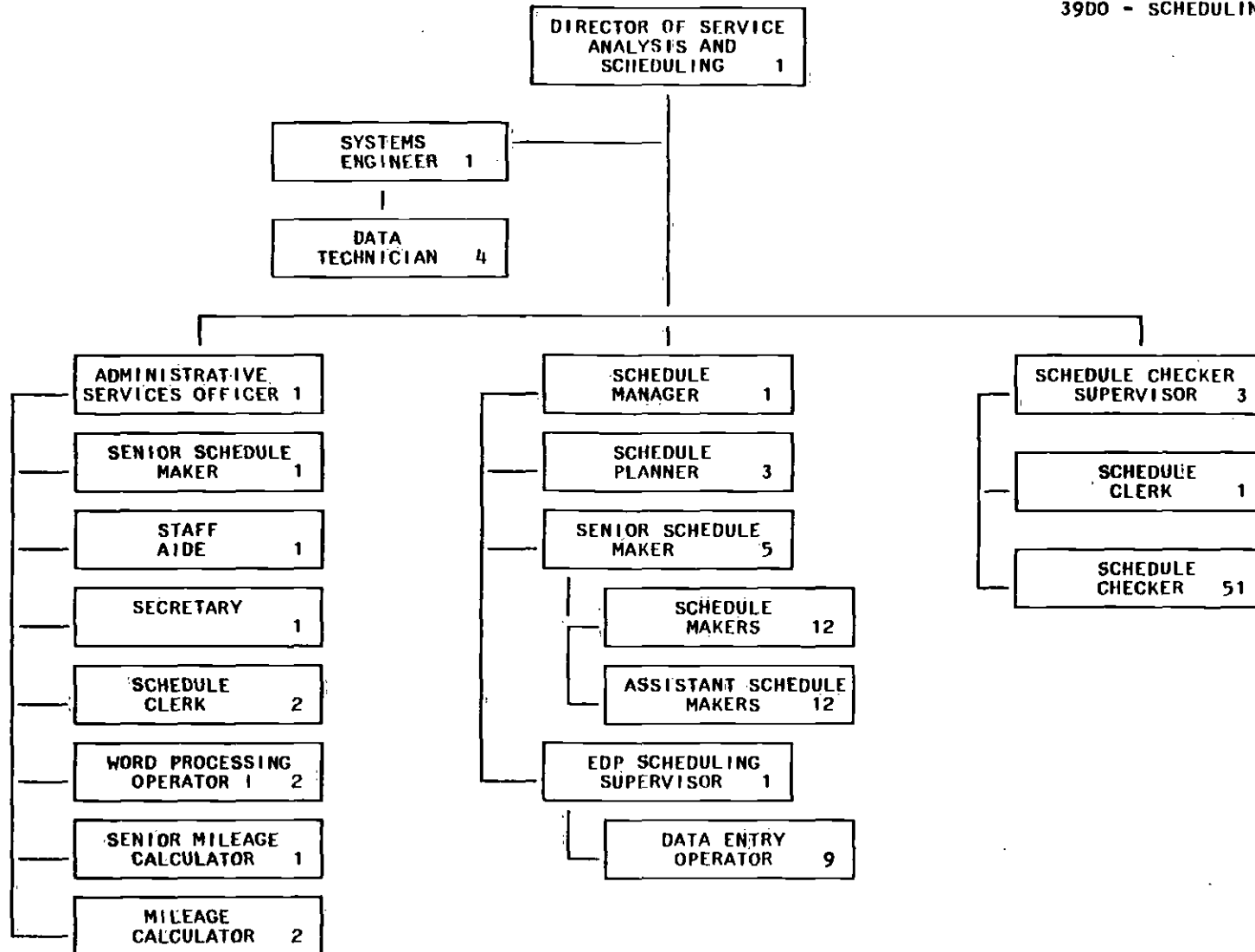




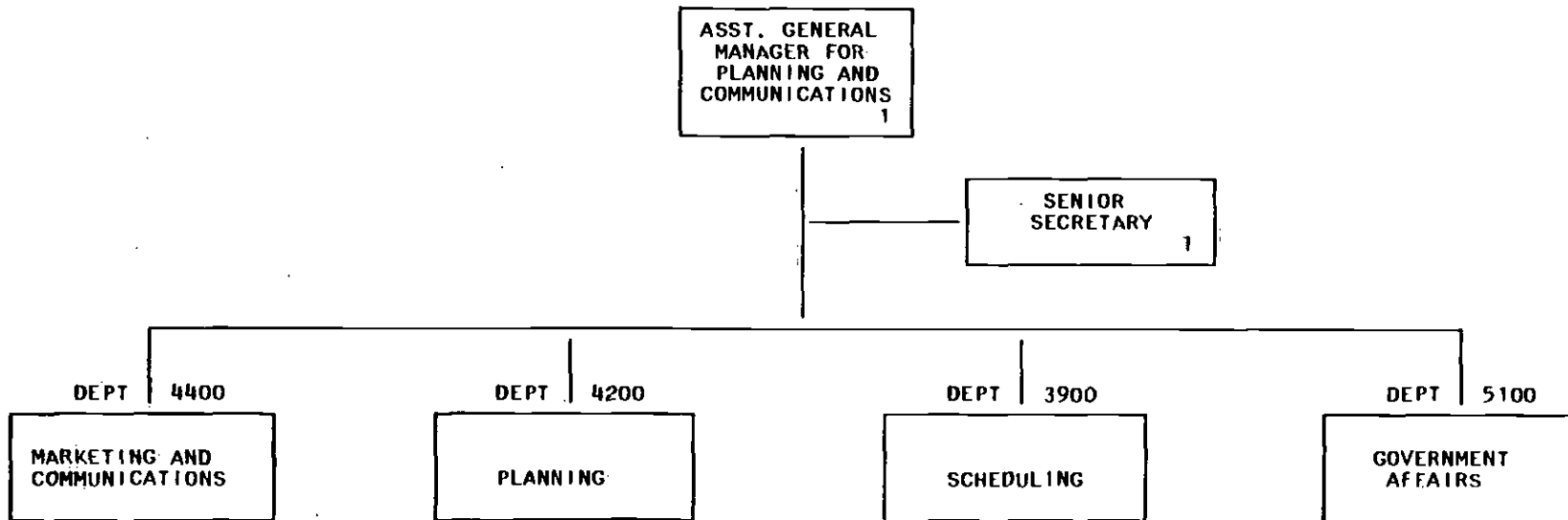


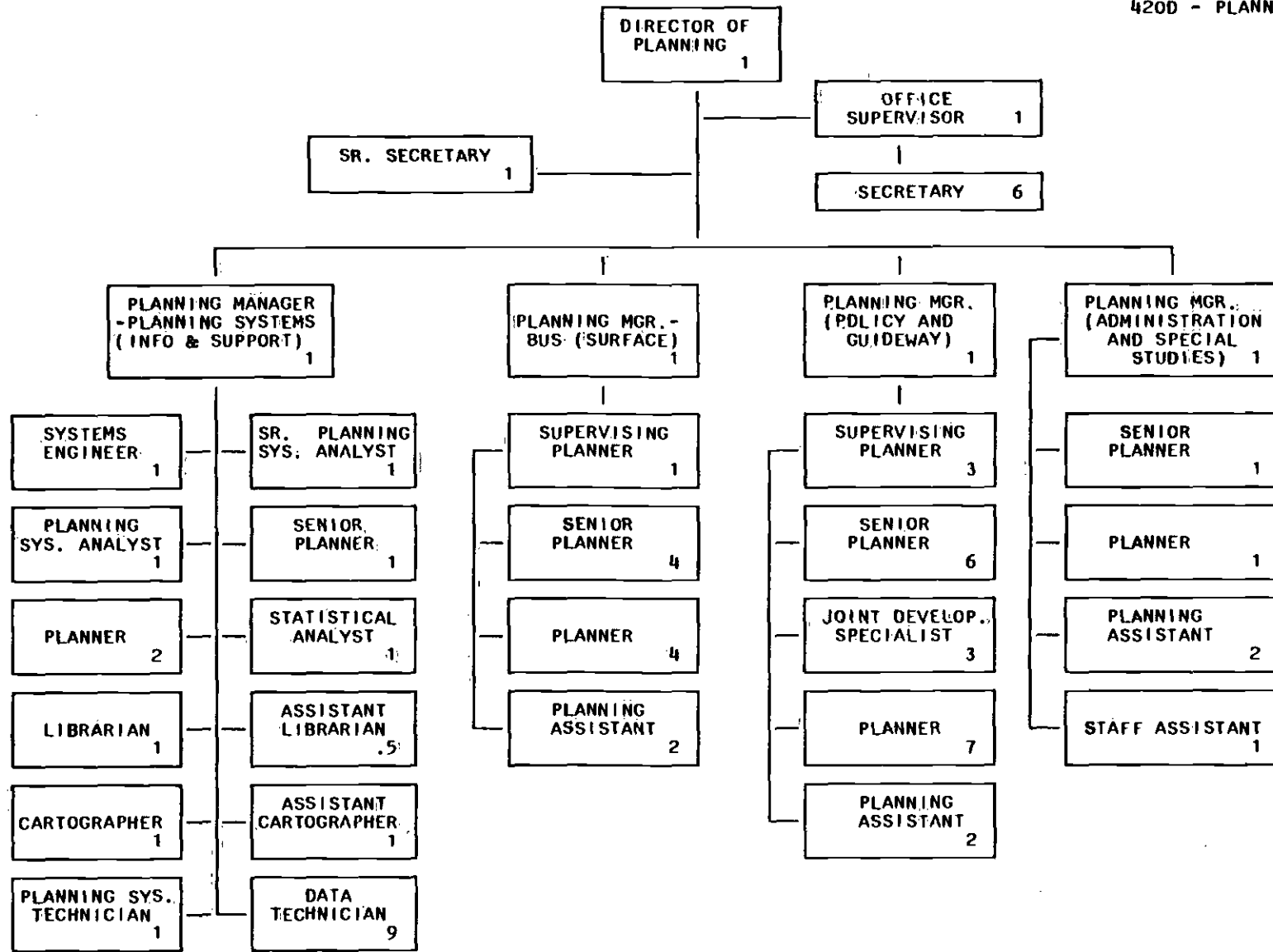


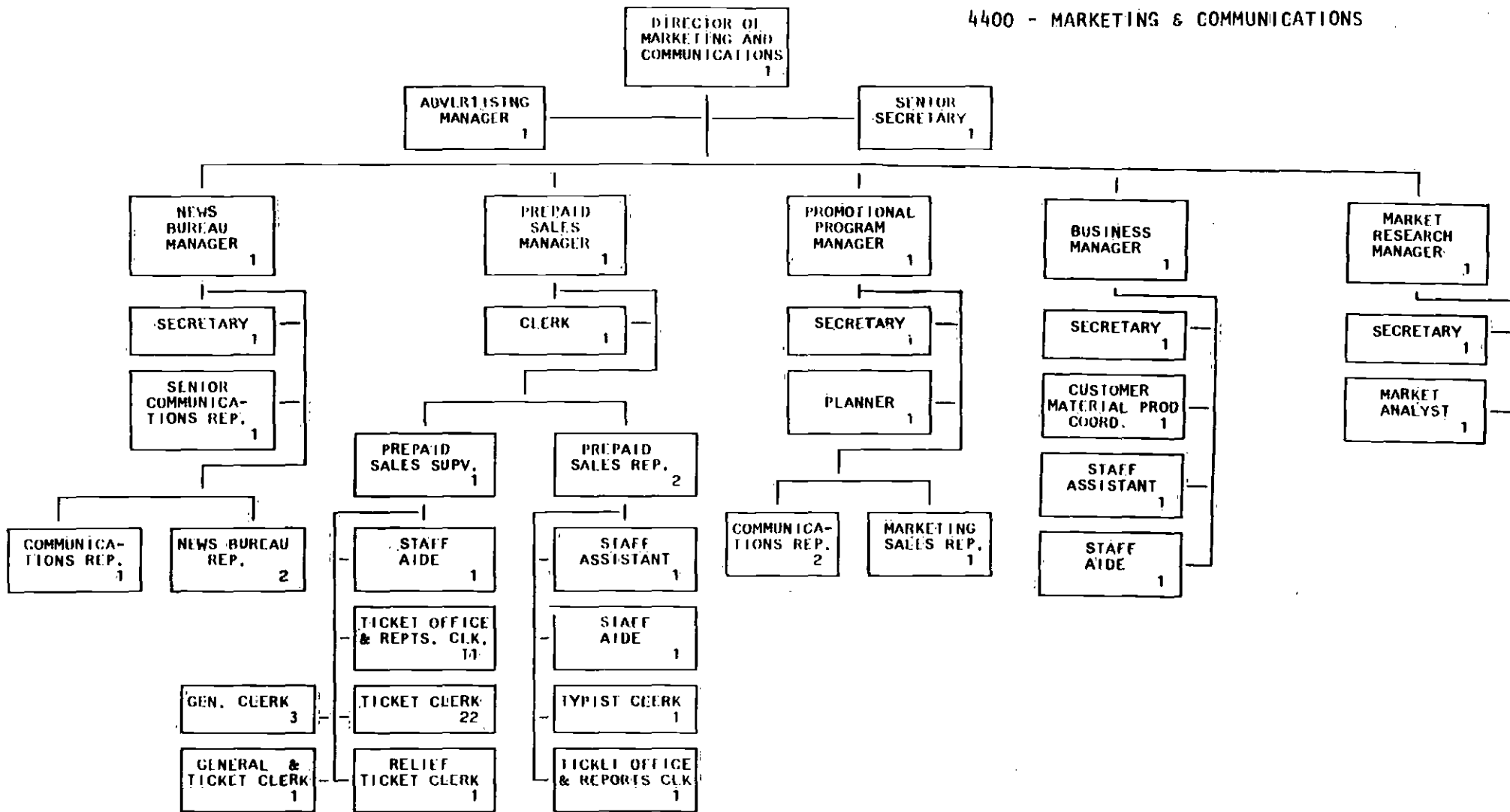




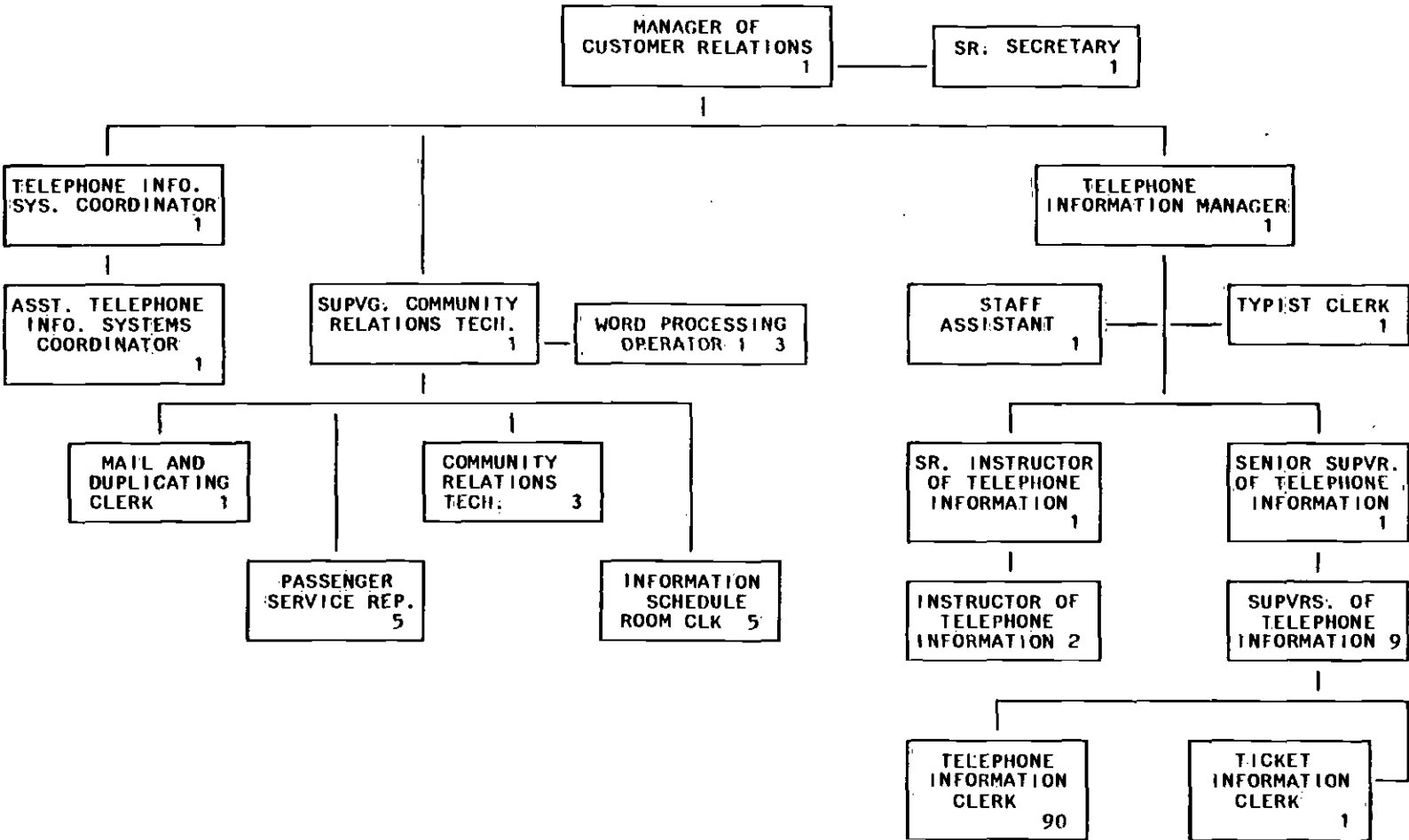
4099 - ASSISTANT GENERAL MANAGER
FOR PLANNING AND COMMUNICATIONS



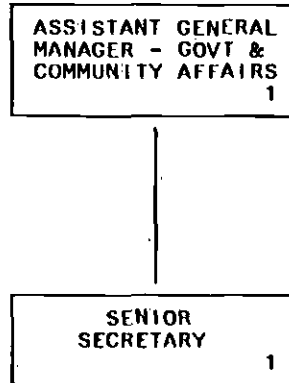




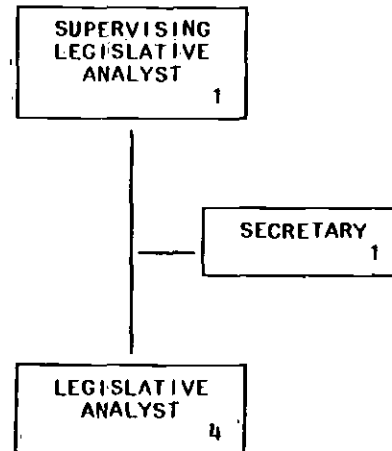
4800 - CUSTOMER RELATIONS

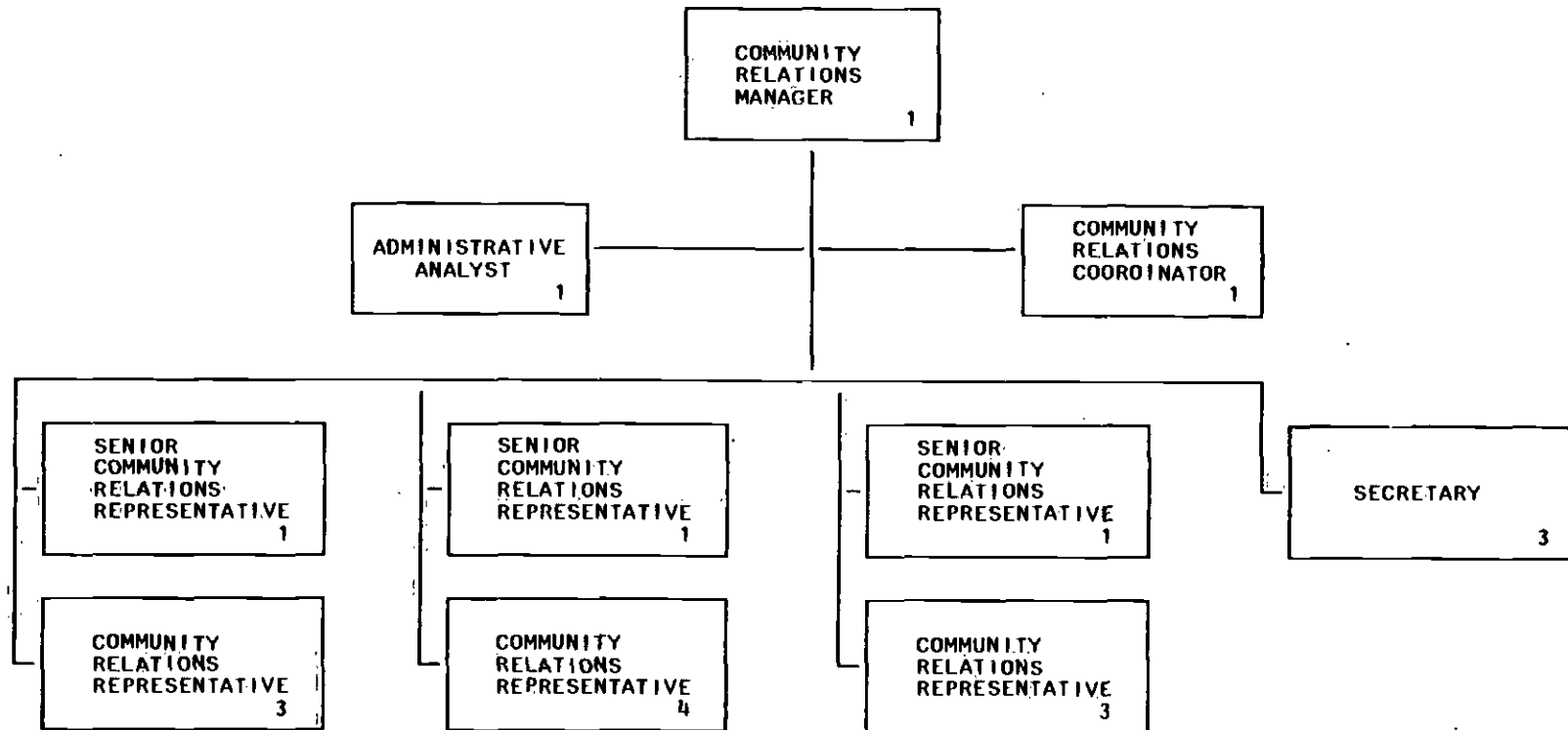


5099 - ASSISTANT GENERAL MANAGER
FOR GOVERNMENT AND COMMUNITY AFFAIRS

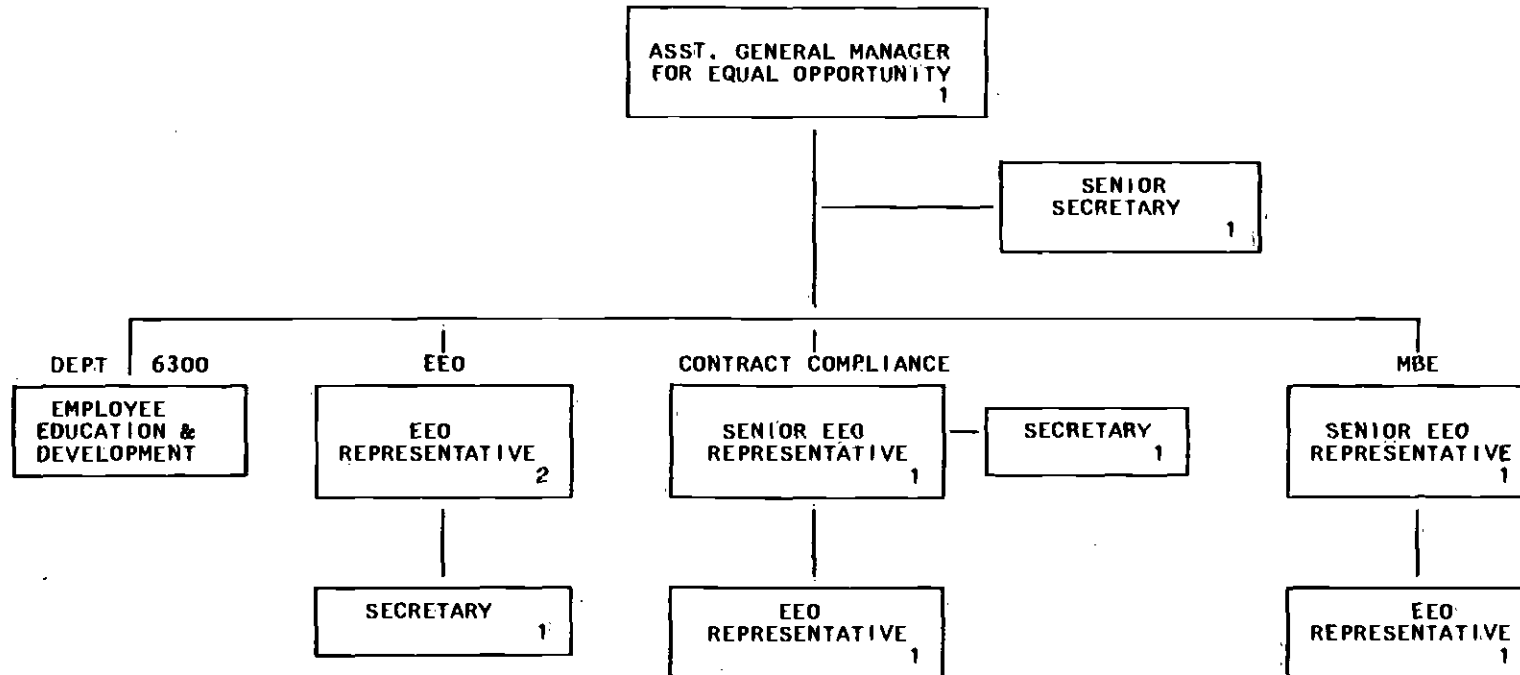


5.100 - GOVERNMENT AFFAIRS

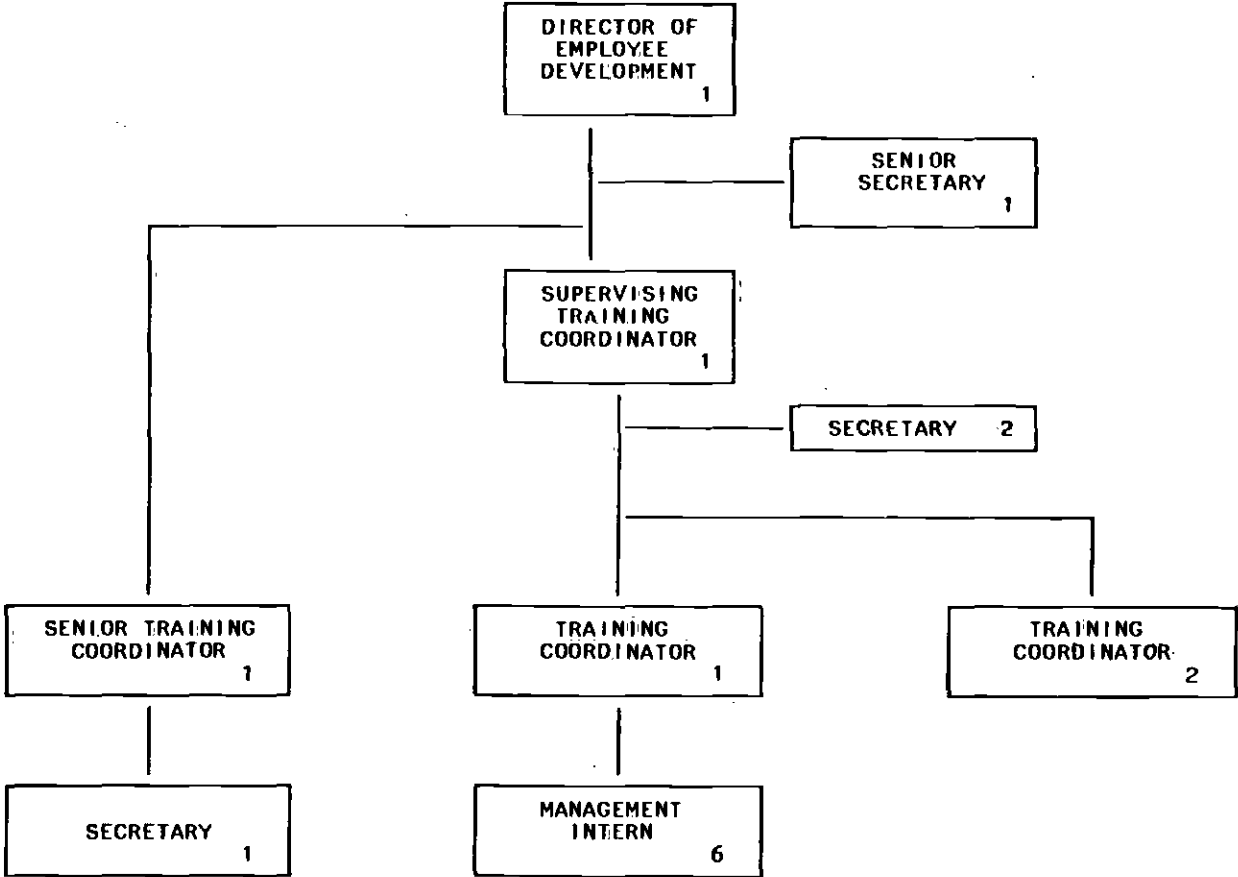


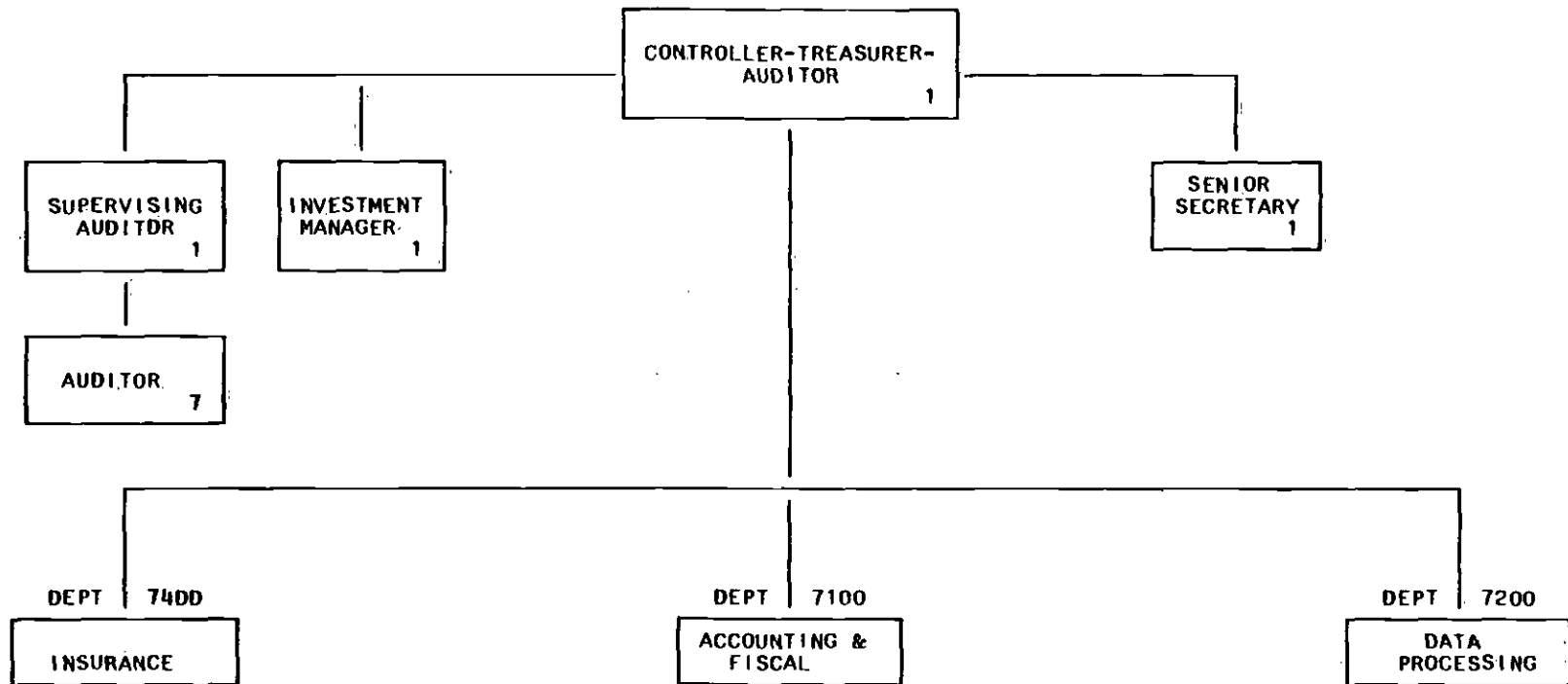


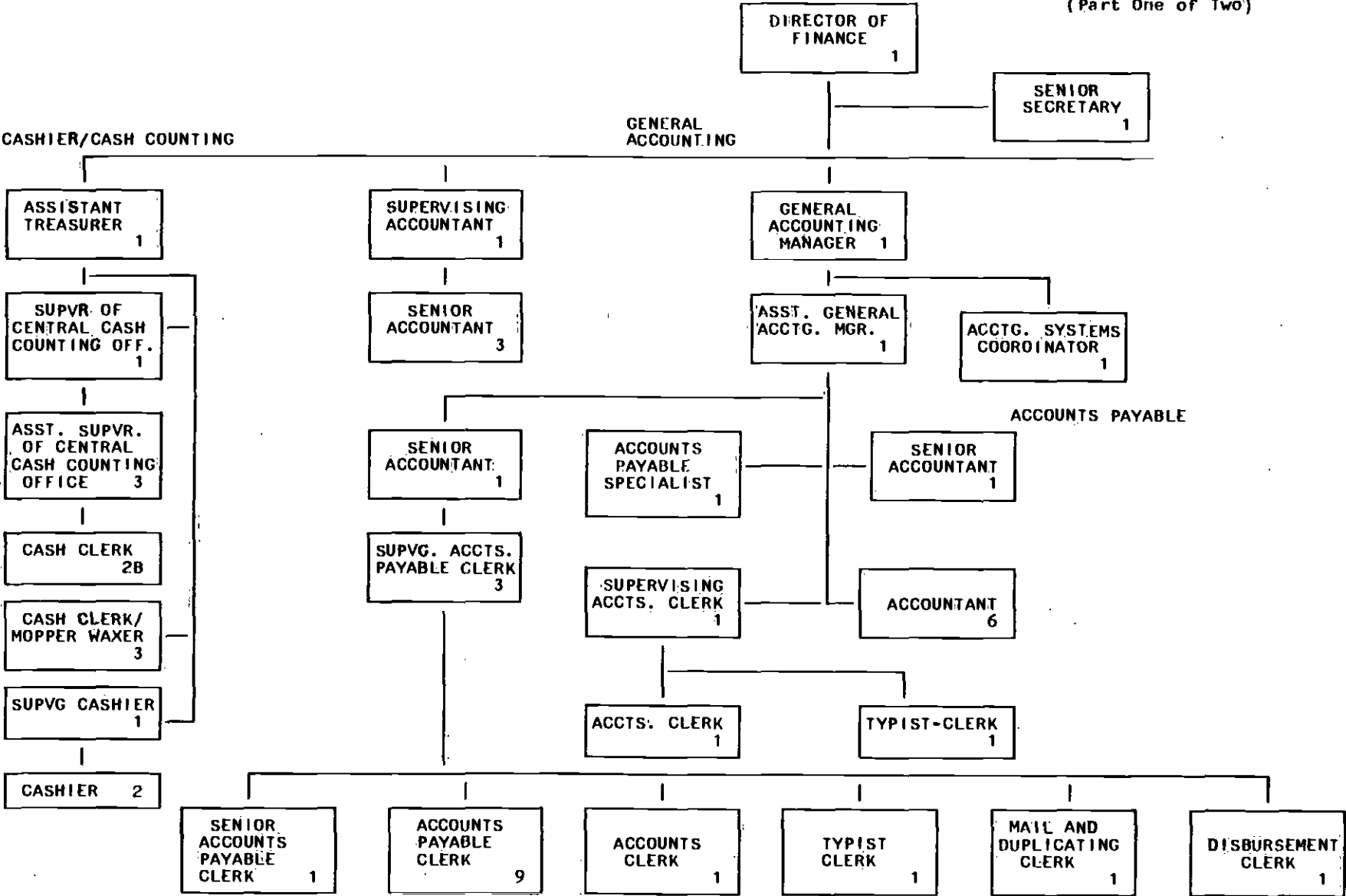
6099 - ASSISTANT GENERAL MANAGER
FOR EQUAL OPPORTUNITY
6100 - HUMAN RELATIONS



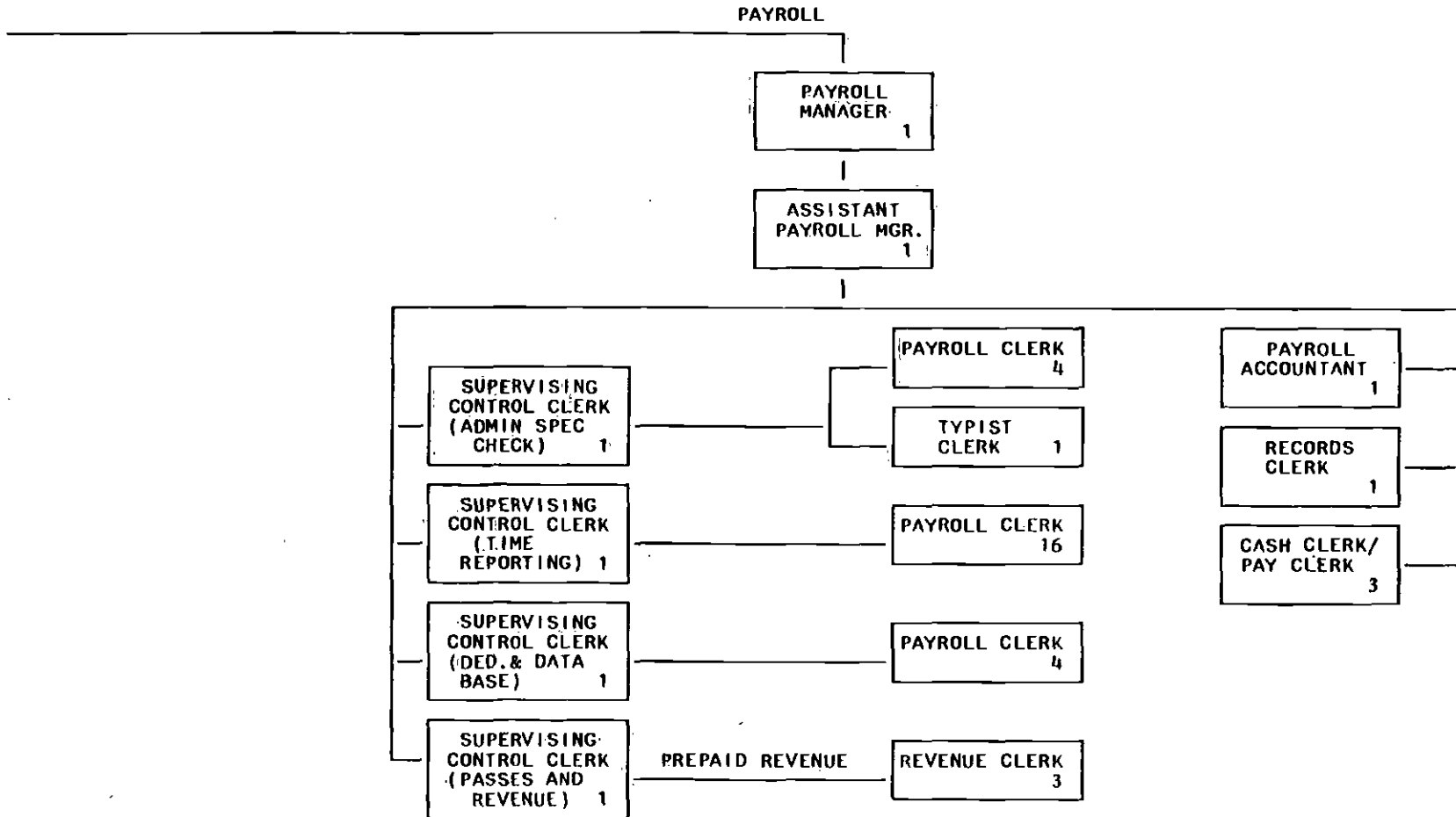
6300 - EMPLOYEE EDUCATION, TRAINING AND DEVELOPMENT



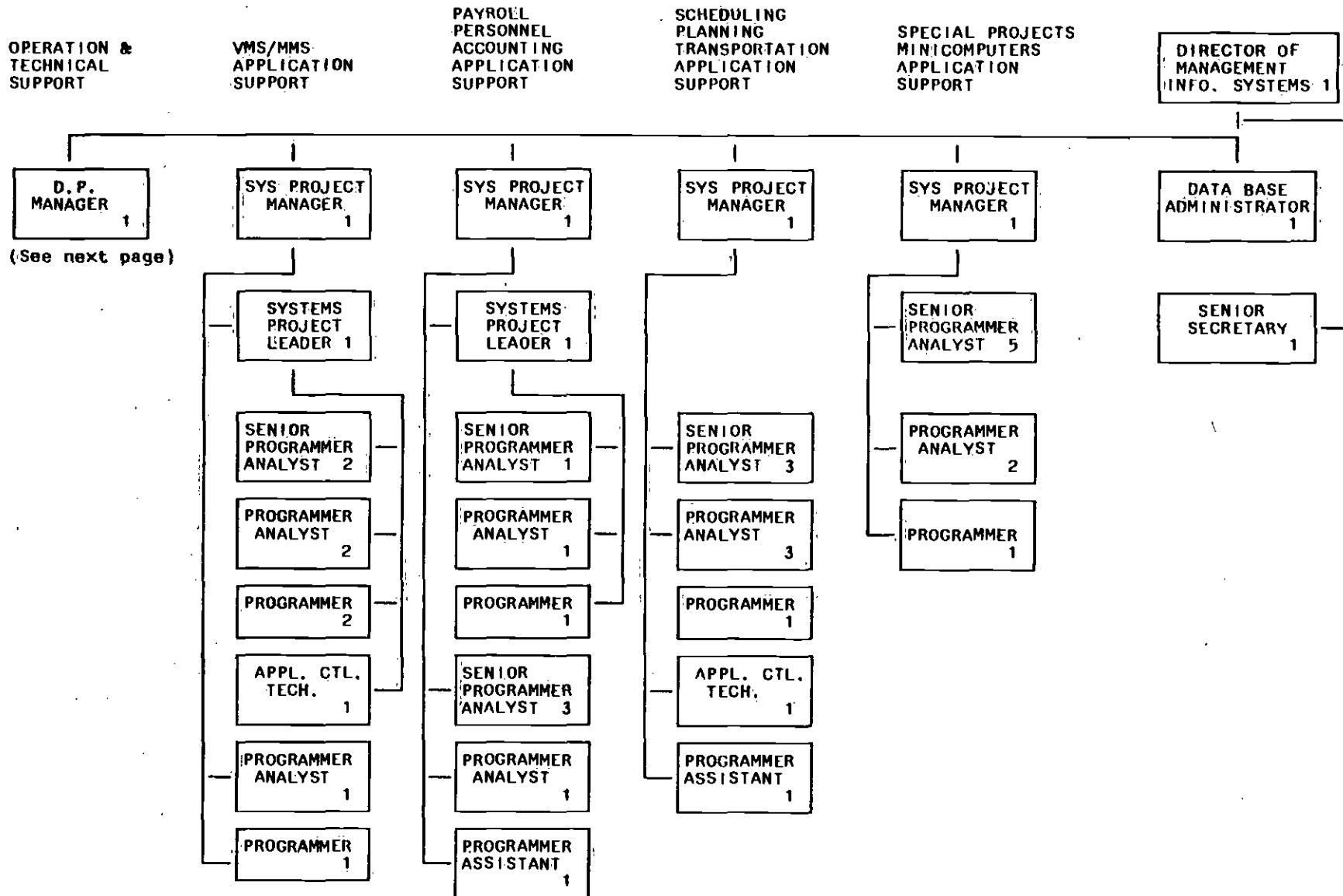


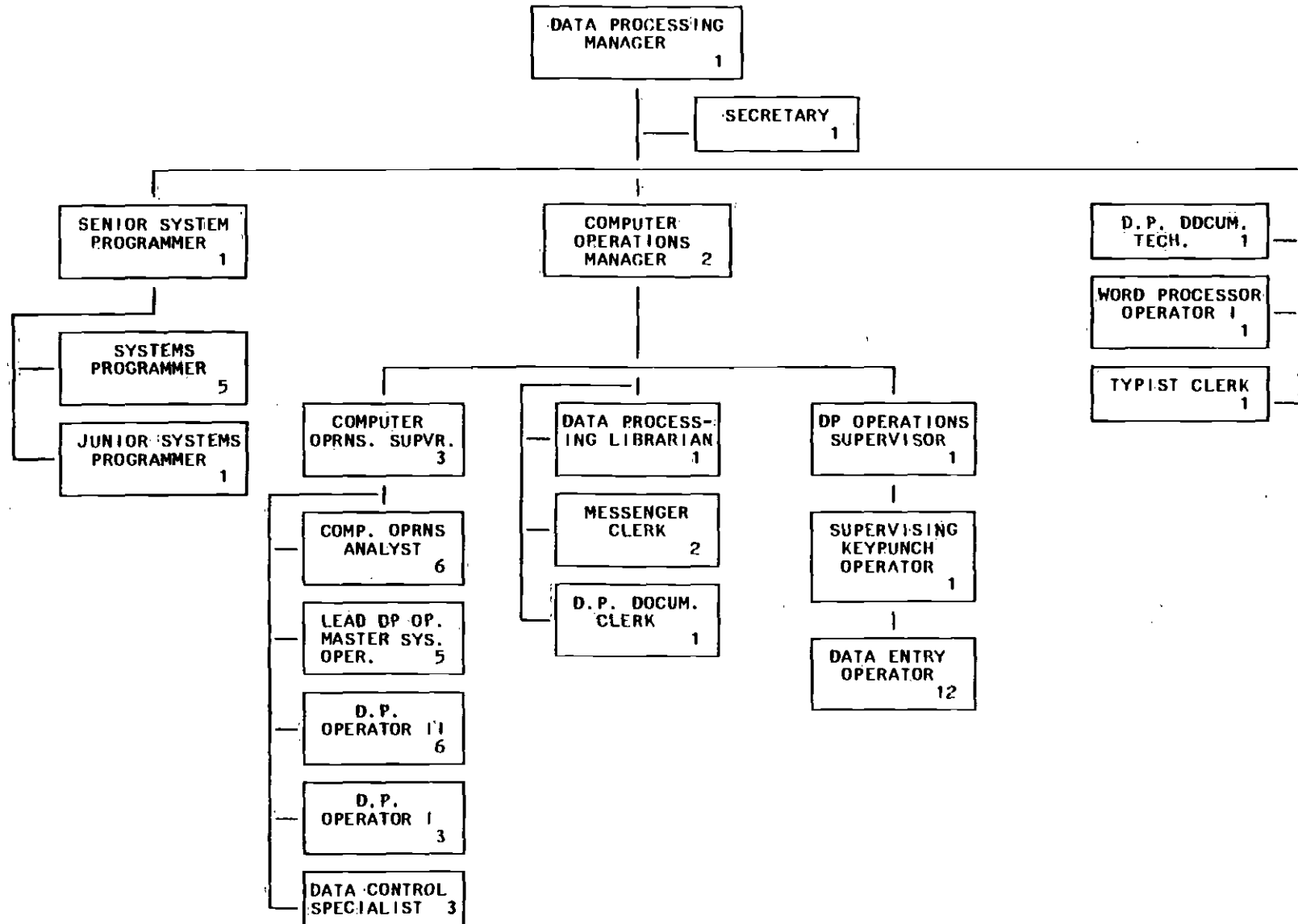


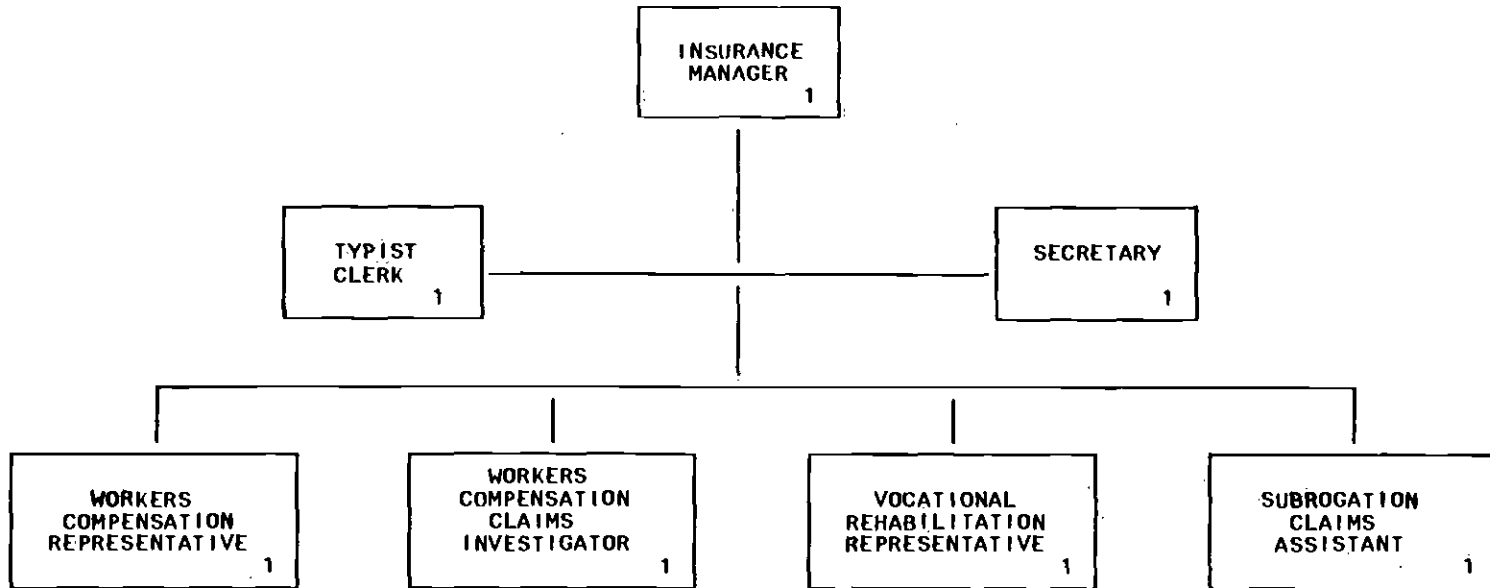
7100 - ACCOUNTING AND FISCAL
(Part Two of Two)



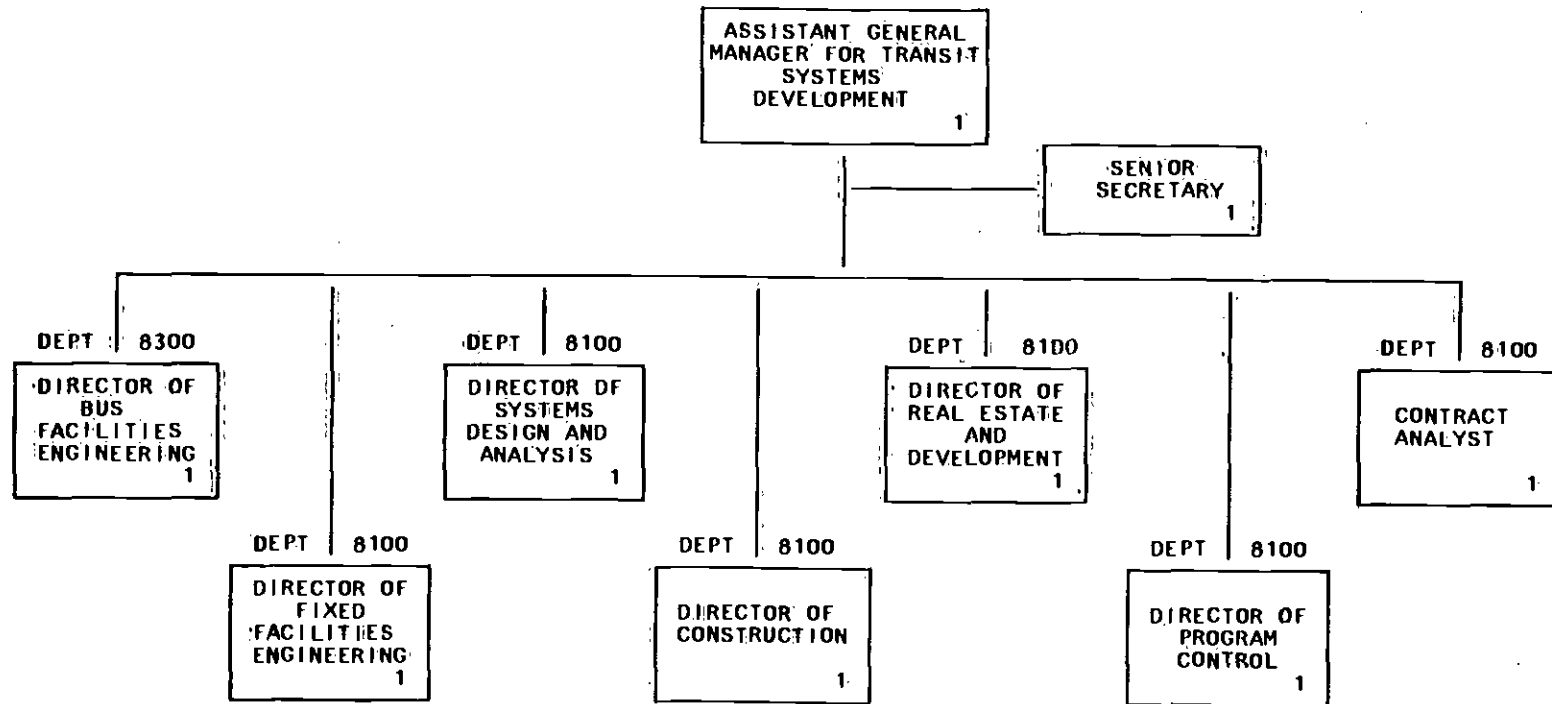
7200 - DATA PROCESSING
(Part One of Two)

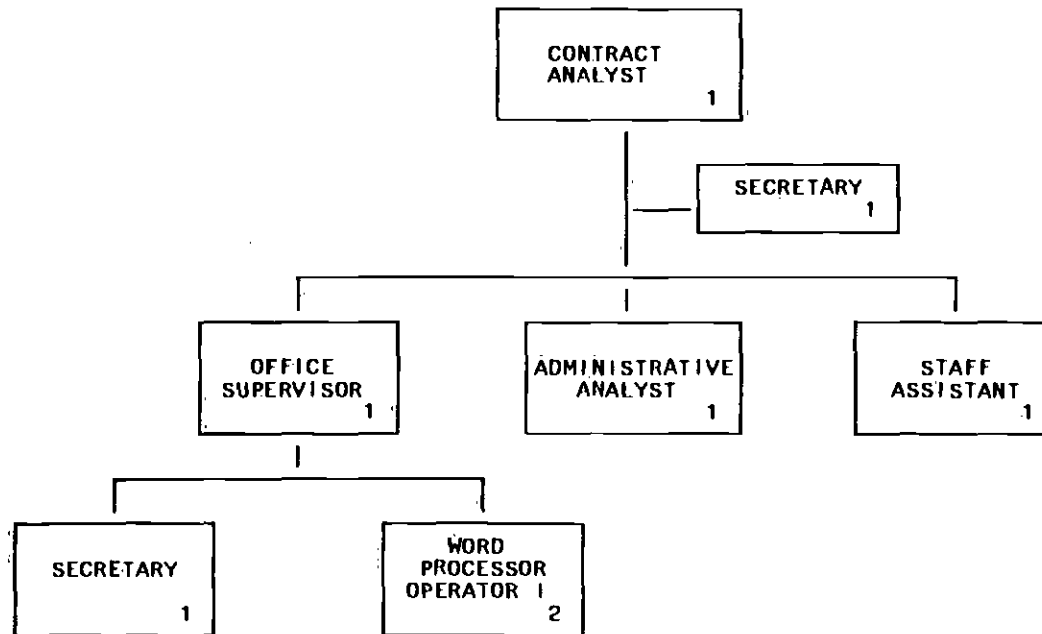


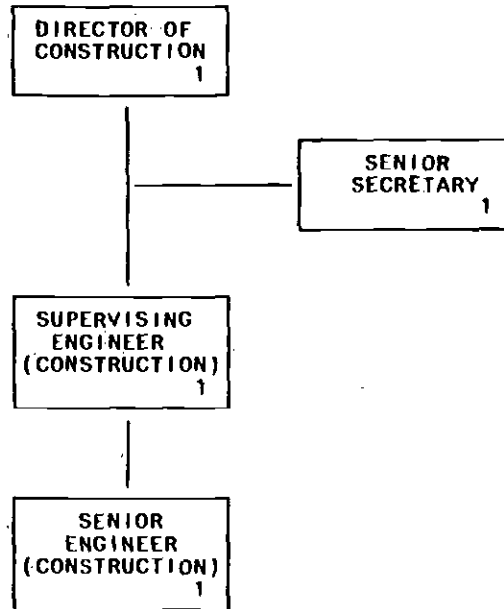




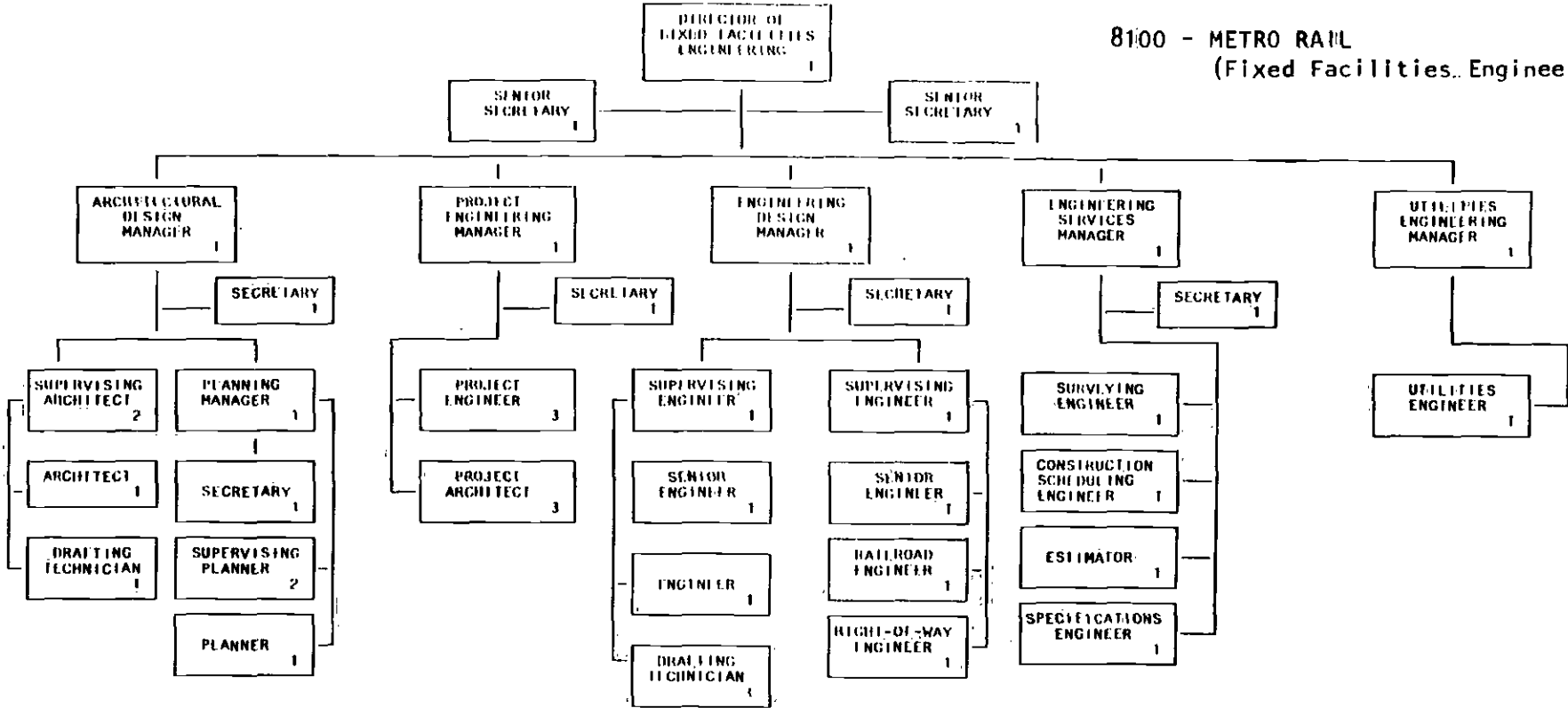
8099 - ASSISTANT GENERAL MANAGER
FOR TRANSIT SYSTEMS
DEVELOPMENT

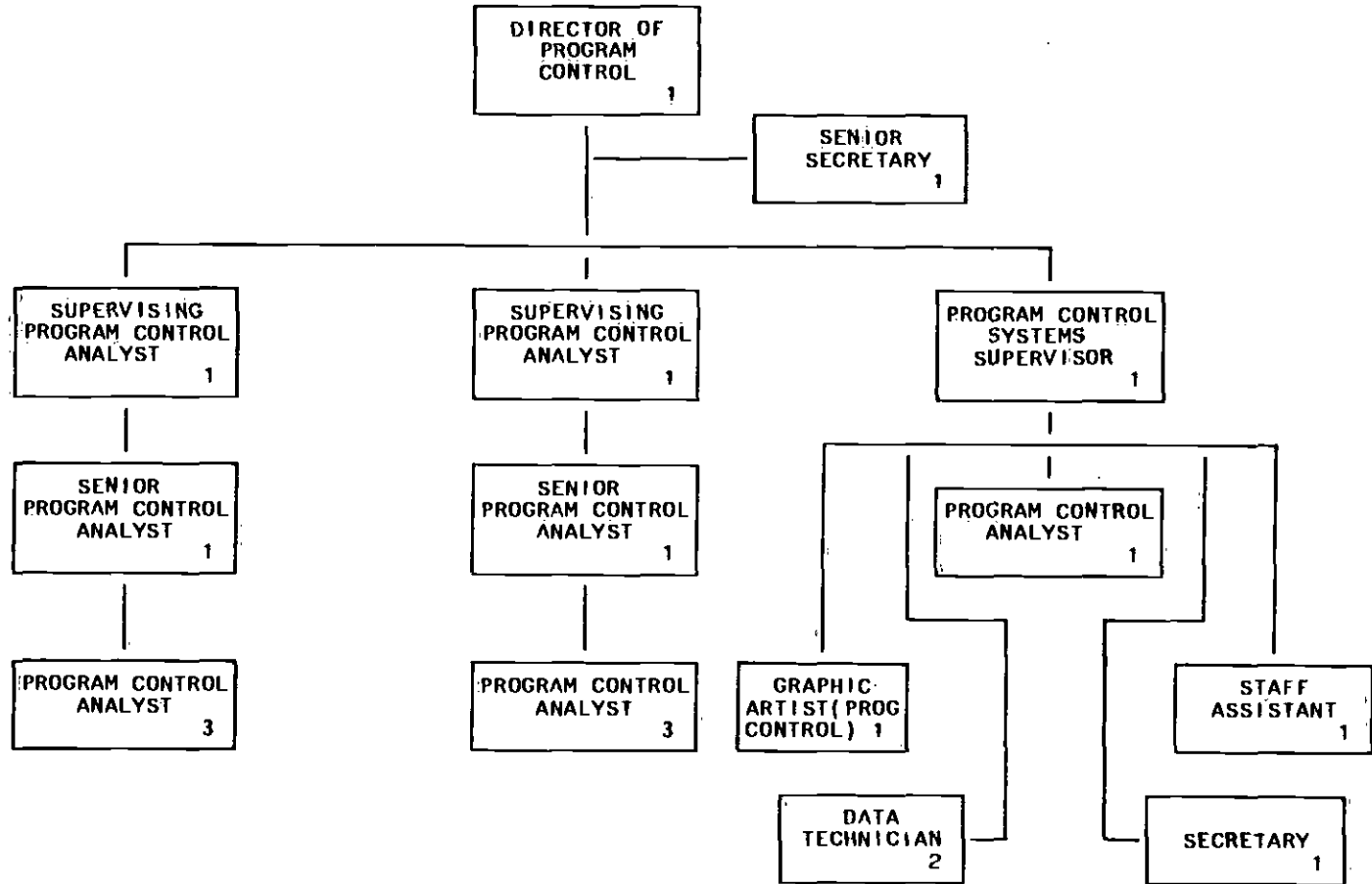


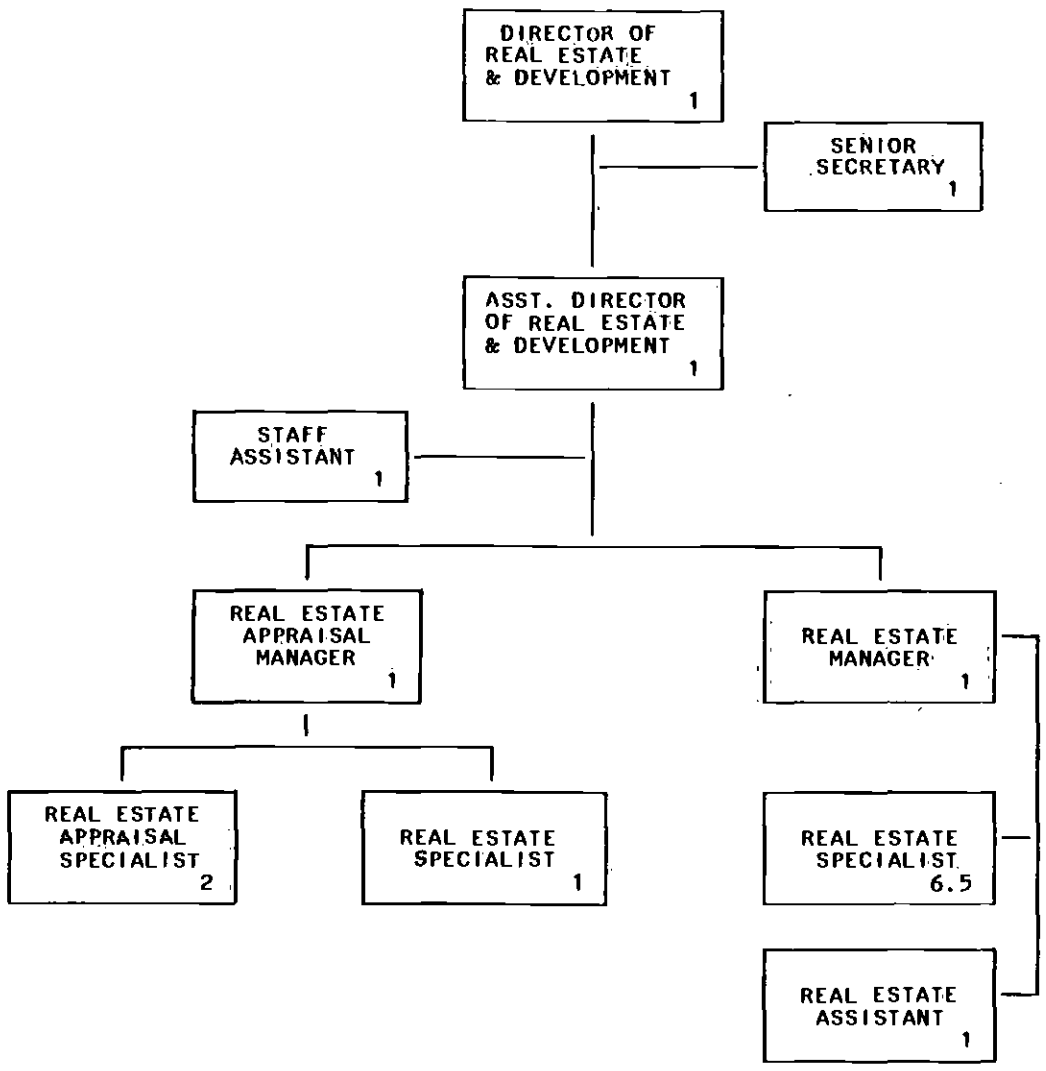


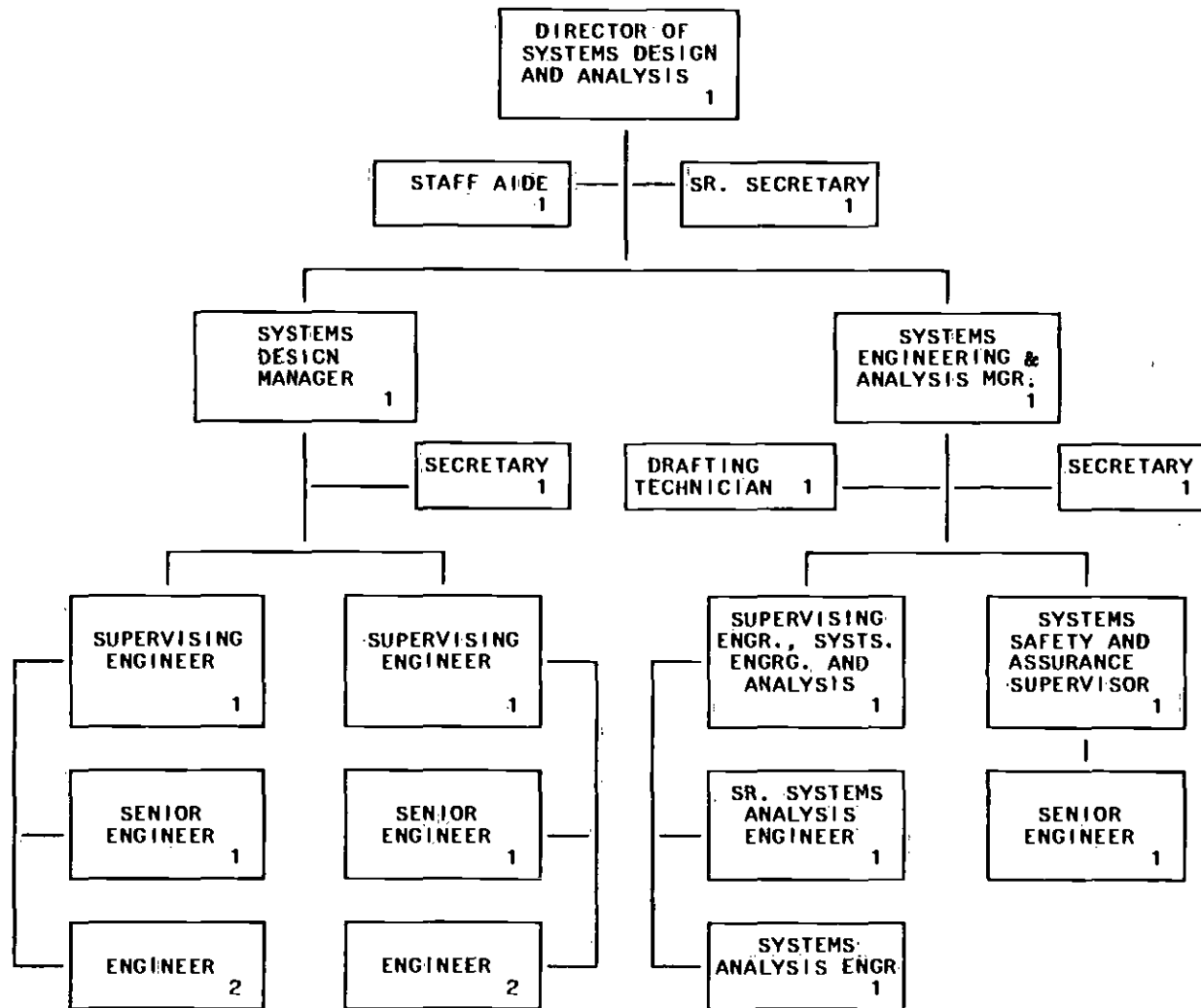


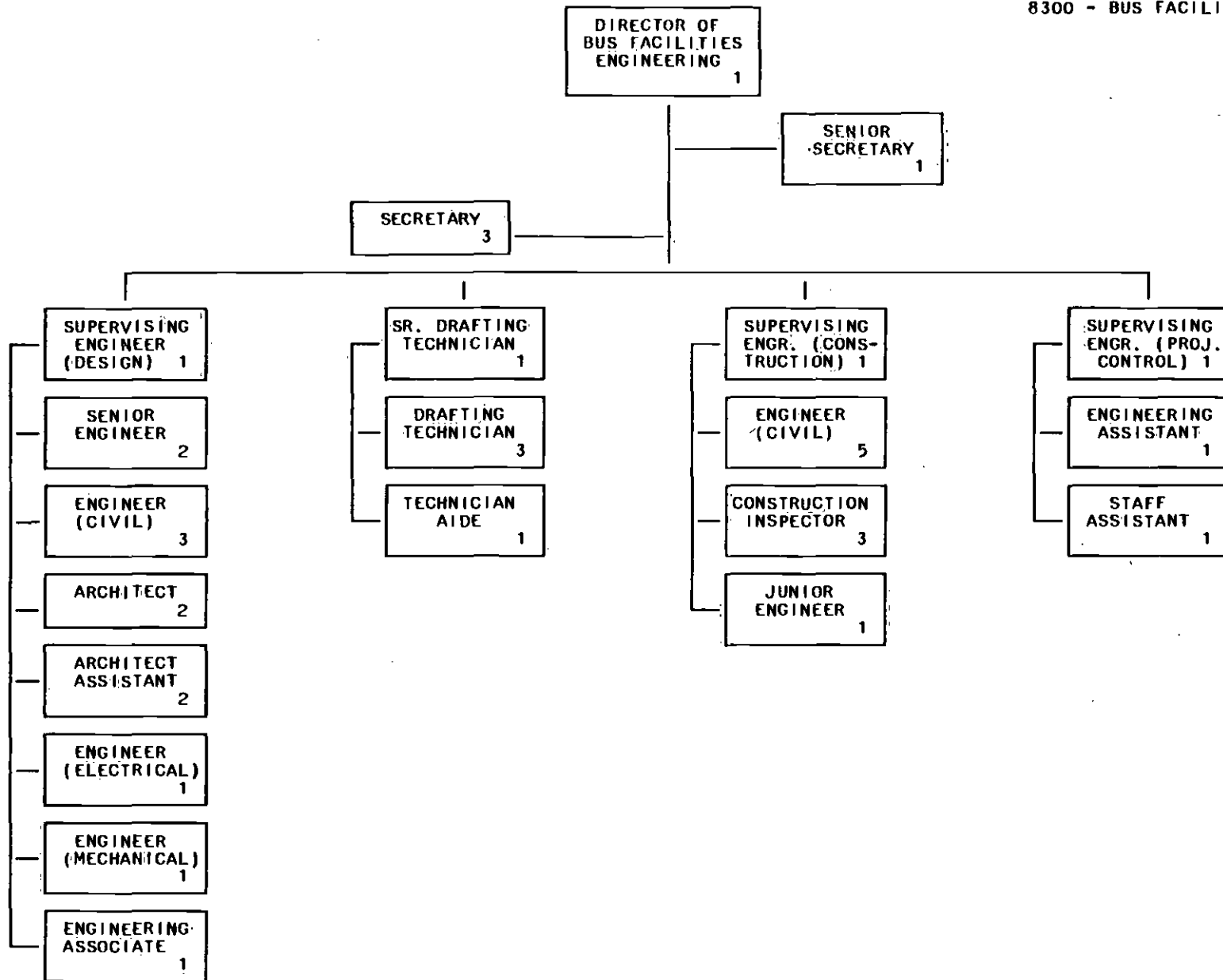
8100 - METRO RAIL
(Fixed Facilities Engineering)

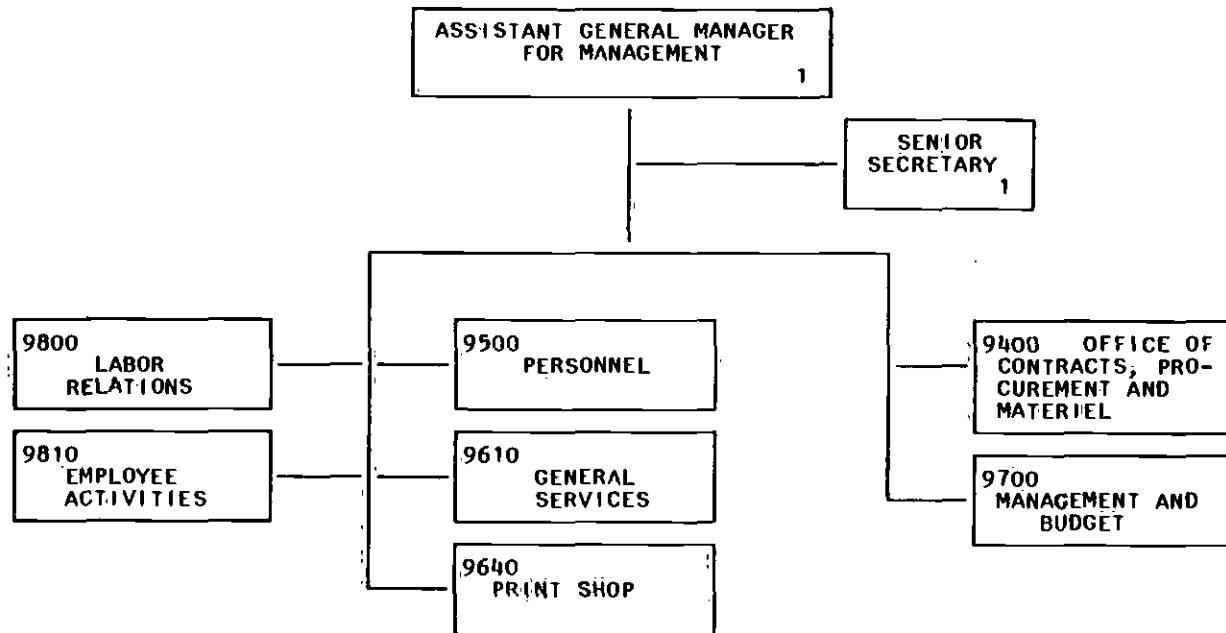


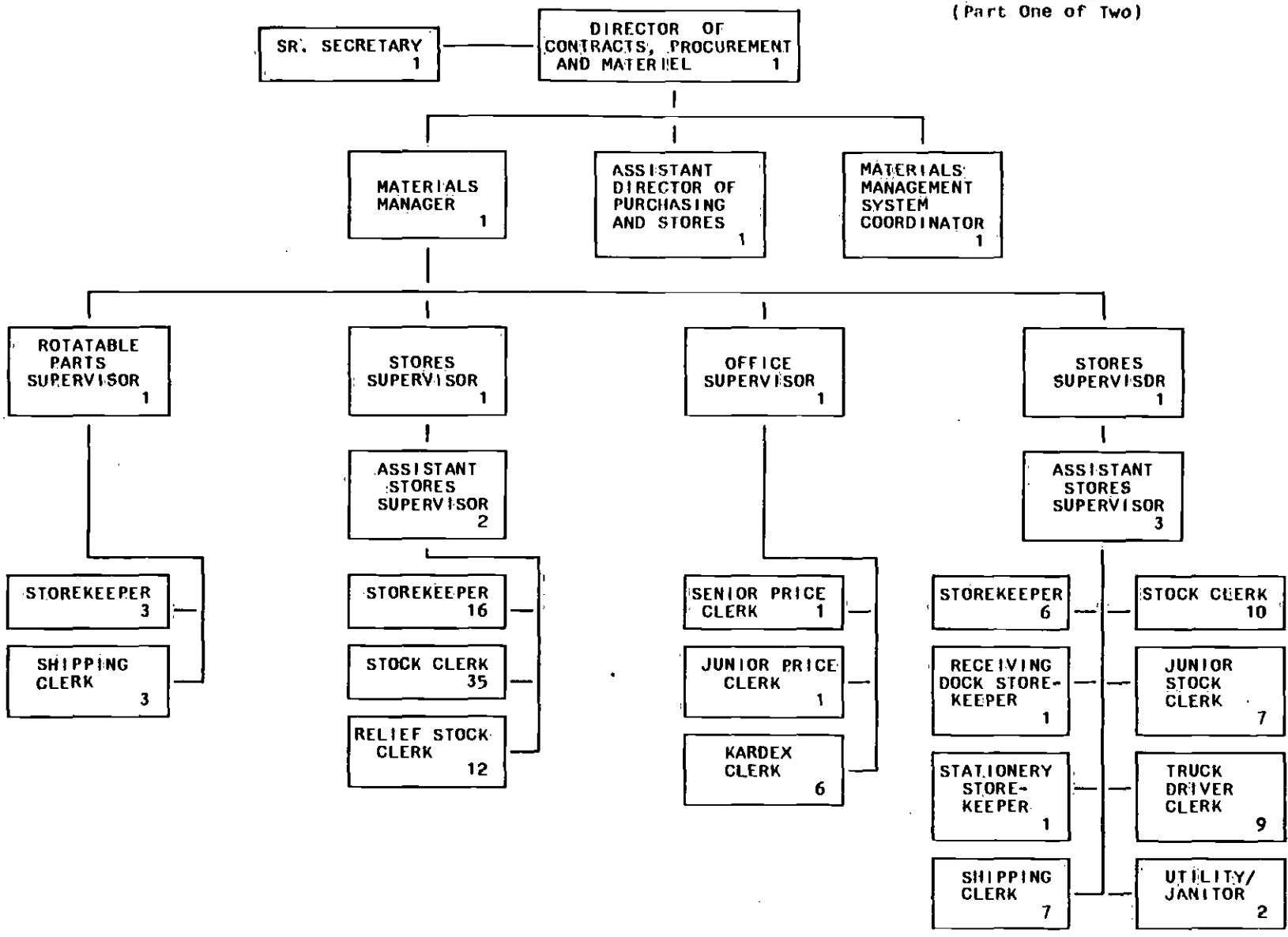




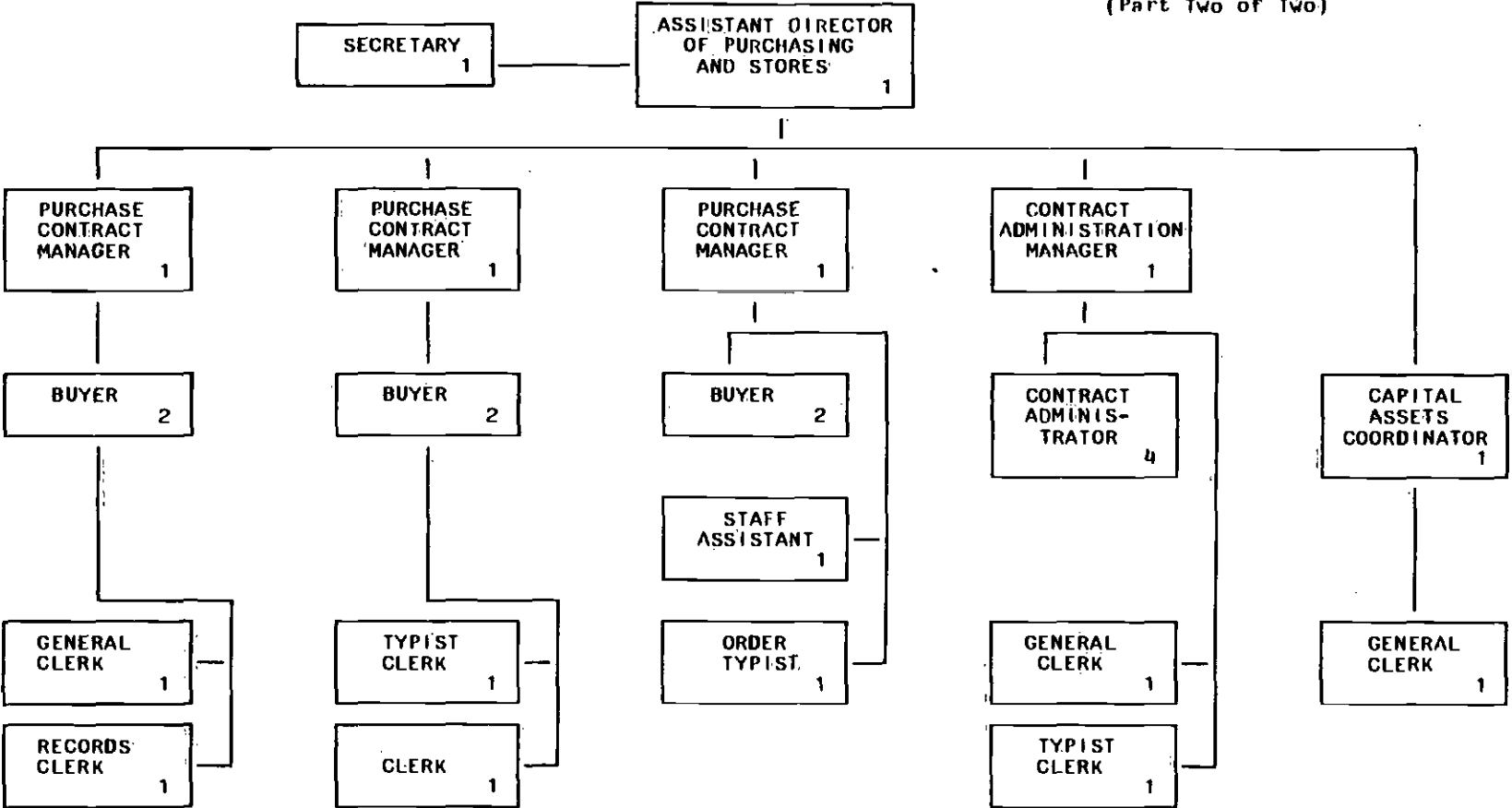








9400 - OFFICE OF CONTRACTS,
 PROCUREMENT & MATERIEL
 (Part Two of Two)



DIRECTOR OF PERSONNEL 1

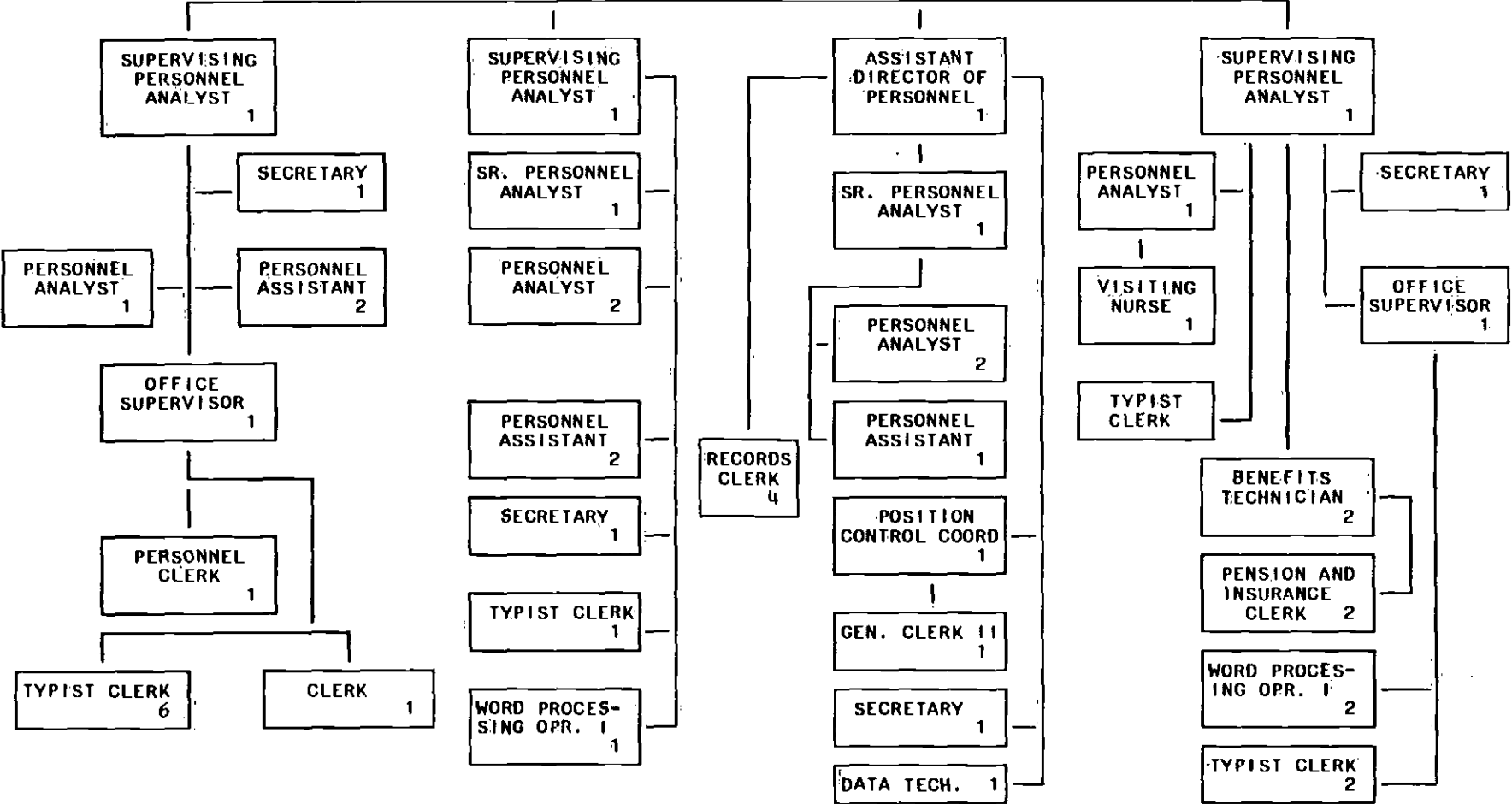
SENIOR SECRETARY 1

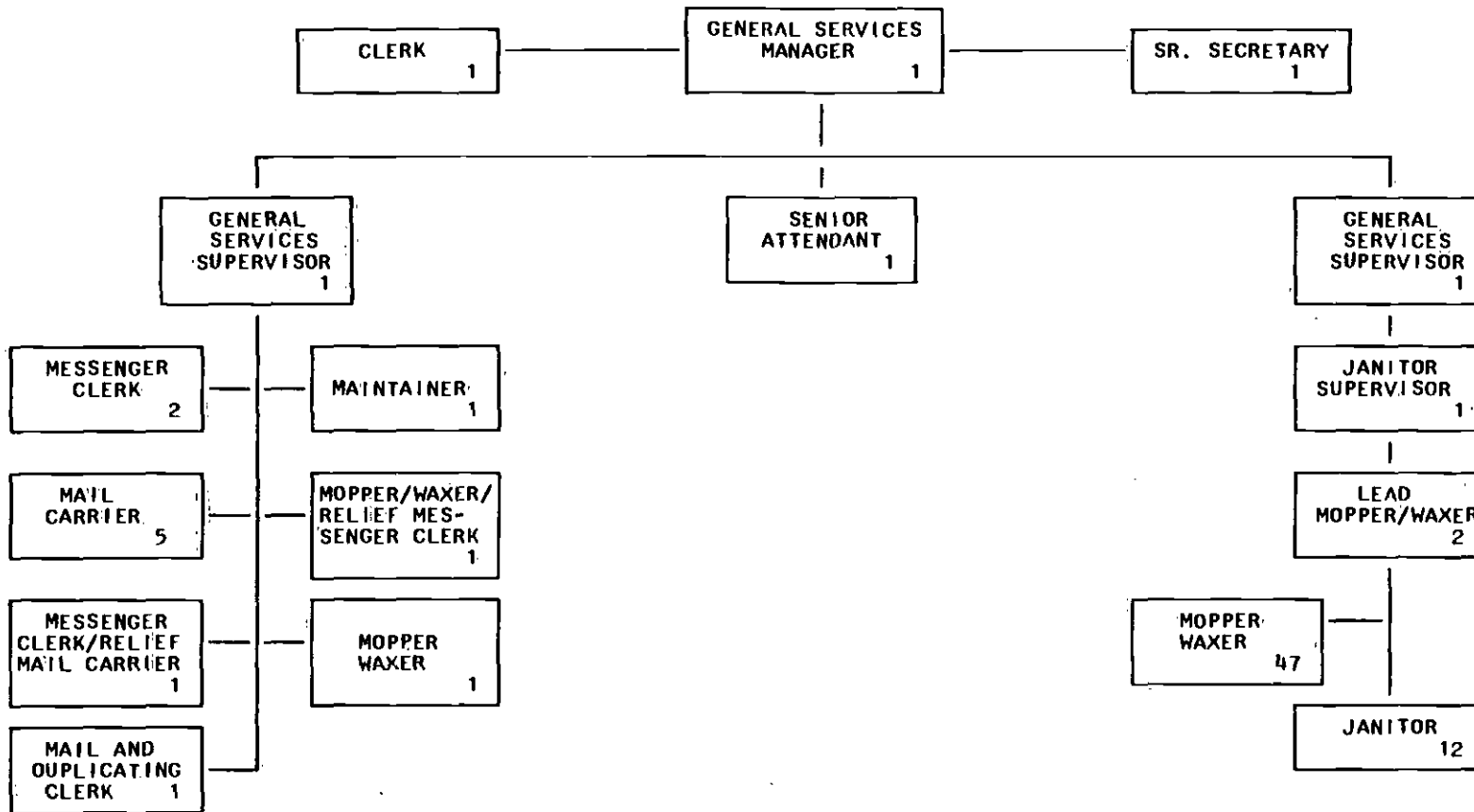
CONTRACT EMPLOYMENT

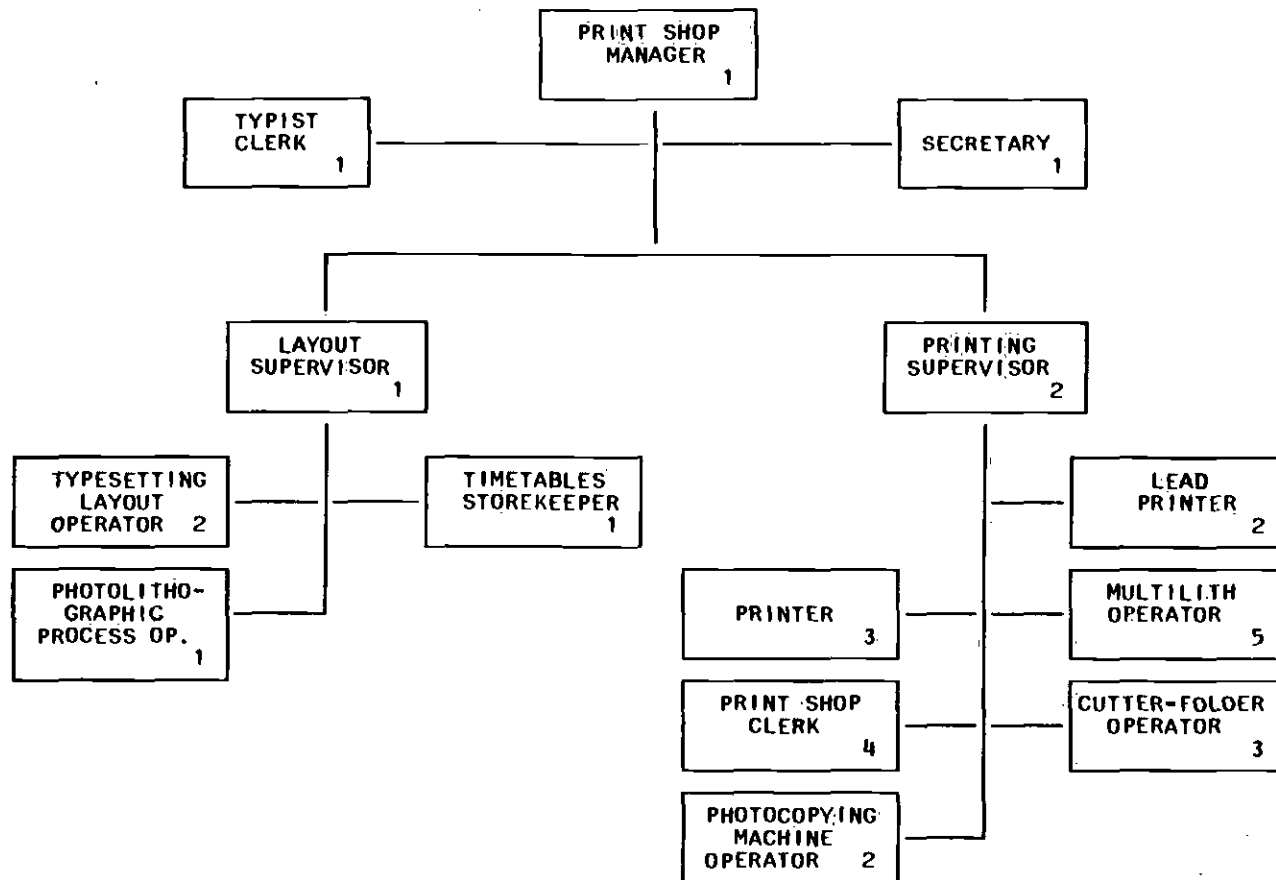
NON-CONTRACT EMPLOYMENT

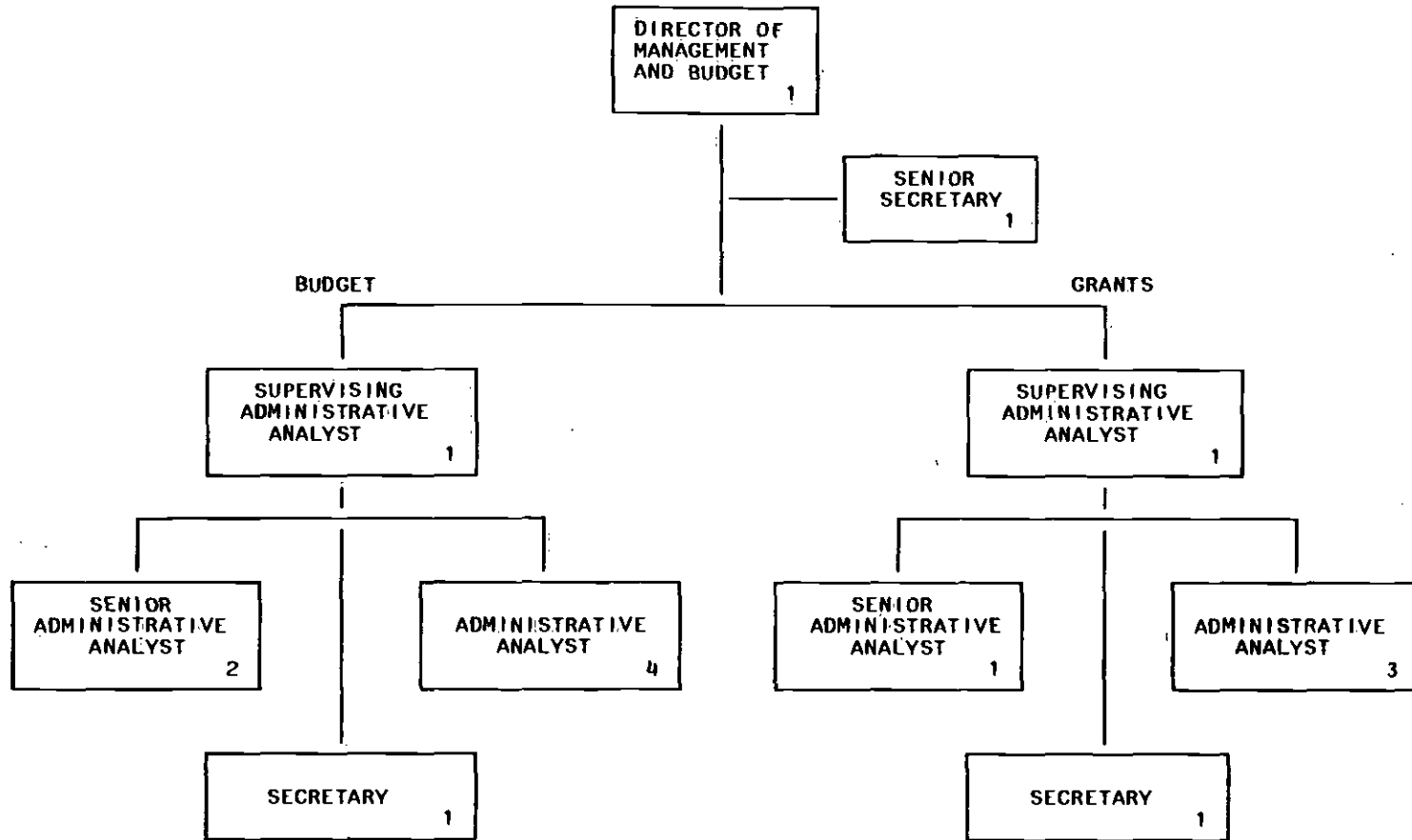
SPECIAL PROJECTS

PENSION & BENEFITS









9800 - EMPLOYEE RELATIONS
9810 - EMPLOYEE ACTIVITIES

