

28599690

MANUAL NO. 67

**SOUTHERN CALIFORNIA
RAPID TRANSIT DISTRICT**



EMERGENCY RESPONSE PLAN

FOR THE
LOS ANGELES
METRO RAIL CONSTRUCTION PROJECT

**IN EMERGENCY
CALL 9-1-1
OR
(213) 972-6280**

SOUTHERN CALIFORNIA RAPID TRANSIT DISTRICT



EMERGENCY RESPONSE PLAN

FOR THE LOS ANGELES METRO RAIL CONSTRUCTION PROJECT

"THE PREPARATION OF THIS DOCUMENT HAS BEEN FINANCED IN PART THROUGH GRANTS FROM THE STATE OF CALIFORNIA, THE CITY OF LOS ANGELES, THE LOS ANGELES COUNTY TRANSPORTATION COMMISSION AND THE U.S. DEPARTMENT OF TRANSPORTATION, URBAN MASS TRANSPORTATION ADMINISTRATION, UNDER THE URBAN MASS TRANSPORTATION ACT OF 1964, AS AMENDED."

MONTH MAY YEAR 1987

SOUTHERN CALIFORNIA RAPID TRANSIT DISTRICT

Revision No. 1 - Sept. 1987

Revision No. 2 - July 1988

Revision No. 3 - Oct. 1988

Revision No. 4 - Dec. 1988

Revision No. 5 - Feb. 1989

Revision No. 6 - Sept. 1989

Revision No. 7 - Jan. 1990

PREPARED BY PDCD
600 SOUTH SPRING STREET
LOS ANGELES, CA 90014

ERM

INTRODUCTION

The Southern California Rapid Transit District (SCRTD) has the overall responsibility for the total implementation program for the Metro Rail Project. The SCRTD is assisted in the implementation by various other agencies and consultants including the Construction Manager (PDCD), the District Insurance Administrator (DIA), the General Consultant (MRTC) and other units within the SCRTD's organization.

One of SCRTD's primary responsibilities within the Metro Rail implementation program is the prompt response and resolution of emergencies during construction. In order to satisfy this requirement, this Emergency Response Plan is established. It covers the procedures and organizational responsibilities to be followed to respond adequately to all emergencies.

Purpose

The Metro Rail Construction Emergency Response Plan is developed to ensure that, in cases of an emergency, immediate **notification**, response, investigation, and proper corrective actions are taken for the maximum protection and safety of workers and the general public; and that loss to either SCRTD, Contractor, or public property is held to a minimum.

Scope

The Metro Rail Construction Emergency Response Plan addresses emergencies, both natural and man-made, which may occur during the course of construction. It is designed to inform immediately personnel at SCRTD and PDCD of all pertinent information regarding an emergency. Senior Management of SCRTD and PDCD will then ensure that proper agencies (medical, fire, police, utilities, etc) are notified immediately, and that immediate and proper corrective actions are taken to deal with the emergency.

Methods of Emergency Discovery

Emergencies on the jobsite can be discovered in various ways. The three most common methods of emergency identification are as follows:

General Discovery

An emergency is reported to 9.1.1 or the RTD Police by someone not associated with the Metro Rail Project.

Contractor Discovery

Contractor personnel on the jobsite discover an emergency and report it to the Contractor supervisory representative.

PDCD Resident Engineer Discovery

Construction Manager's field personnel identify an emergency and report it to PDCD Senior Management.

Procedures to respond to each of the above emergencies are described in Section 2.

TABLE OF CONTENTS

METRO RAIL CONSTRUCTION EMERGENCY RESPONSE PLAN

CONTENTS

INTRODUCTION	PAGE
PURPOSE	iii
SCOPE	iii
METHODS OF EMERGENCY DISCOVERY	iii
GENERAL DISCOVERY	iii
CONTRACTOR DISCOVERY	iii
PDCD RESIDENT ENGINEER DISCOVERY	iv
SECTION 1 ORGANIZATION AND RESPONSIBILITIES	
1.1 THE SCRTO EMERGENCY RESPONSE REPRESENTATIVES	1-1
1.1.1 EMERGENCY RESPONSE MANAGER (SCRTO-ERM)	1-1
1.1.2 PROJECT ENGINEER (PE)	1-1
1.1.3 SUPERVISING ENGINEER/CONSTRUCTION SAFETY (SE/CS)	1-1
1.2 THE PDCD EMERGENCY RESPONSE REPRESENTATIVES	1-1
1.2.1 THE PDCD EMERGENCY RESPONSE MANAGER (PDCD-ERM)	1-1
1.2.2 THE PDCD RESIDENT ENGINEER (RE)	1-1
1.2.3 PDCD MANAGER, SAFETY AND SECURITY	1-2
1.3 DIA DIRECTOR OF SAFETY	1-2
1.4 CONTRACTOR	1-2
FIGURE 1-1	1-3
SECTION 2 EMERGENCY RESPONSE NOTIFICATION PROCEDURES	
2.1 NOTIFICATION PROCEDURES	2-1
1) CONTRACTOR	2-1
2) PDCD RESIDENT ENGINEER	2-1
3) PDCD EMERGENCY RESPONSE MANAGER	2-1
4) PDCD SAFETY/SECURITY MANAGER	2-1
5) PDCD COMMUNITY RELATIONS MANAGER	2-1
6) SCRTO METRO RAIL EMERGENCY RESPONSE MANAGER	2-1
7) SCRTO SUPERVISOR CONSTRUCTION SAFETY	2-2
8) SCRTO ASSISTANT GENERAL MANAGER, METRO RAIL	2-2
9) DIA, DIRECTOR OF SAFETY	2-2
2.2 INITIAL EMERGENCY NOTIFICATION INFORMATION TO BE PROVIDED BY CALLER	2-2
2.3 METHOD OF COMMUNICATION	2-2
2.4 GENERAL INFORMATION - SCRTO AND PDCD	2-3
2.5 TRAINING	2-3
2.6 TEST EMERGENCY RESPONSE PROCEDURES	2-3

2.7	INFORMATIONAL SIGNS	2-3
	FIGURE 2-1	2-4
	FIGURE 2-2	2-5
	FIGURE 2-3	2-6

SECTION 3 LOS ANGELES DEPARTMENT OF TRANSPORTATION

3.1	SCHEDULED STREET OPENINGS/CLOSINGS	3-1
3.2	EMERGENCY STREET CLOSURES	3-1
3.3	LADOT EMERGENCY TELEPHONE CONTACTS	3-1

SECTION 4 INVESTIGATION, REPORTS, DOCUMENTATION

4.1	INVESTIGATIONS	4-1
4.2	REPORTS	4-1
	4.2.1 INITIAL EMERGENCY RESPONSE REPORT	4-1
	4.2.2 INVESTIGATION REPORTS	4- 1 2

APPENDIX

Appendix A

Construction Emergency Response Telephone List(s) Facility and Systemwide Contracts	A-1
--	-----

Appendix B

Public Utility Emergency Phone List	B-1
Definitions	B-2
Initial Emergency Response Report	B-3
AGM-TSD Memo - Subject: Metro Rail Construction Emergency Notification Procedures	B-4
Typical Informational Sign	B-6
Contract/Contractor Site Map - MOS-1	B-7
Metro Rail Parcels Owned by the District	B-8

SECTION 1

EMERGENCY RESPONSE ORGANIZATION AND RESPONSIBILITIES

Following are the emergency response representatives within the SCRTD Field Construction Organization and their respective responsibilities. These include representatives within SCRTD, PDCD, DIA and the Contractor. (See Figure 1-1, Organization Chart)

1.1 THE SCRTD EMERGENCY RESPONSE REPRESENTATIVES

1.1.1 Emergency Response Manager (SCRTD-ERM)

The SCRTD-ERM is the Director, Construction Management (DCM). The SCRTD - ERM shall be on 24-hour call and shall have a pager and a cellular telephone at all times while on call, and respond to the scene of the emergency, if required.

1.1.2 Project Engineer (PE)

After notification by the SCRTD-ERM, the PE shall provide assistance to the SCRTD-ERM and PDCD as required/requested. The PE or designated representative shall be on 24-hour call and have a pager at all times, and shall respond to the scene of the emergency, if required.

1.1.3 Supervising Engineer/Construction Safety (SE/CS)

The SE/CS is the District's safety representative at the scene of an emergency. The SE/CS or designated representative shall be on 24-hour call, shall have a pager at all times, and shall respond to the scene of the emergency, if required.

1.2 PDCD EMERGENCY RESPONSE REPRESENTATIVES

1.2.1 PDCD Emergency Response Manager (PDCD-ERM)

The Deputy Construction Manager for Operations (DCM/OPS) is the primary PDCD-ERM and shall be on 24 hour call. The PDCD-ERM is the PDCD single point of contact in an emergency, and shall have a pager and cellular telephone at all times while on call, and shall respond to the scene of the emergency, if required. The Construction Manager (CM) is the secondary PDCD-ERM **acting as backup to the DCM-OPS. The CM** should be contacted at any time contact cannot be made with the DCM/OPS. The CM will also be on 24 hour call and shall have a pager at all times **while on call.**

In the event of extended absence of the DCM-OPS, PDCD shall issue a memo identifying who is on call and their home phone number and pager number.

1.2.2 PDCD Resident Engineer (RE)

After notification by the PDCD-ERM, the RE shall notify the Contractor and proceed immediately to the scene of the emergency. The RE shall be on 24-hour call and shall carry a pager at all times when on call.

1.2.3 PDCD Manager, Safety and Security (MS/S)

Upon notification of the emergency, the MS/S shall notify the District Insurance Administrator (DIA) and the RTD Safety and Systems Assurance Supervisor (S/SAS), then proceed immediately to the scene of the emergency. The MS/S's responsibilities are:

- o To gather and document information relative to the incident.
- o To ensure Contractor compliance with the PDCD Construction Safety and Security Manual.
- o To assess the emergency and assure proper protective/corrective measures are being taken.
- o To take photographs.
- o To make a thorough investigation of the incident to determine probable cause and related factors.
- o To assure that the Contractor complies with all safety and health requirements, including notification requirements to Cal-OSHA or other agencies as required.
- o To advise the Contractor's Safety Representative when requested.
- o To assure corrective actions are taken to prevent a recurrence.
- o To assure initial and final incident reports are prepared.

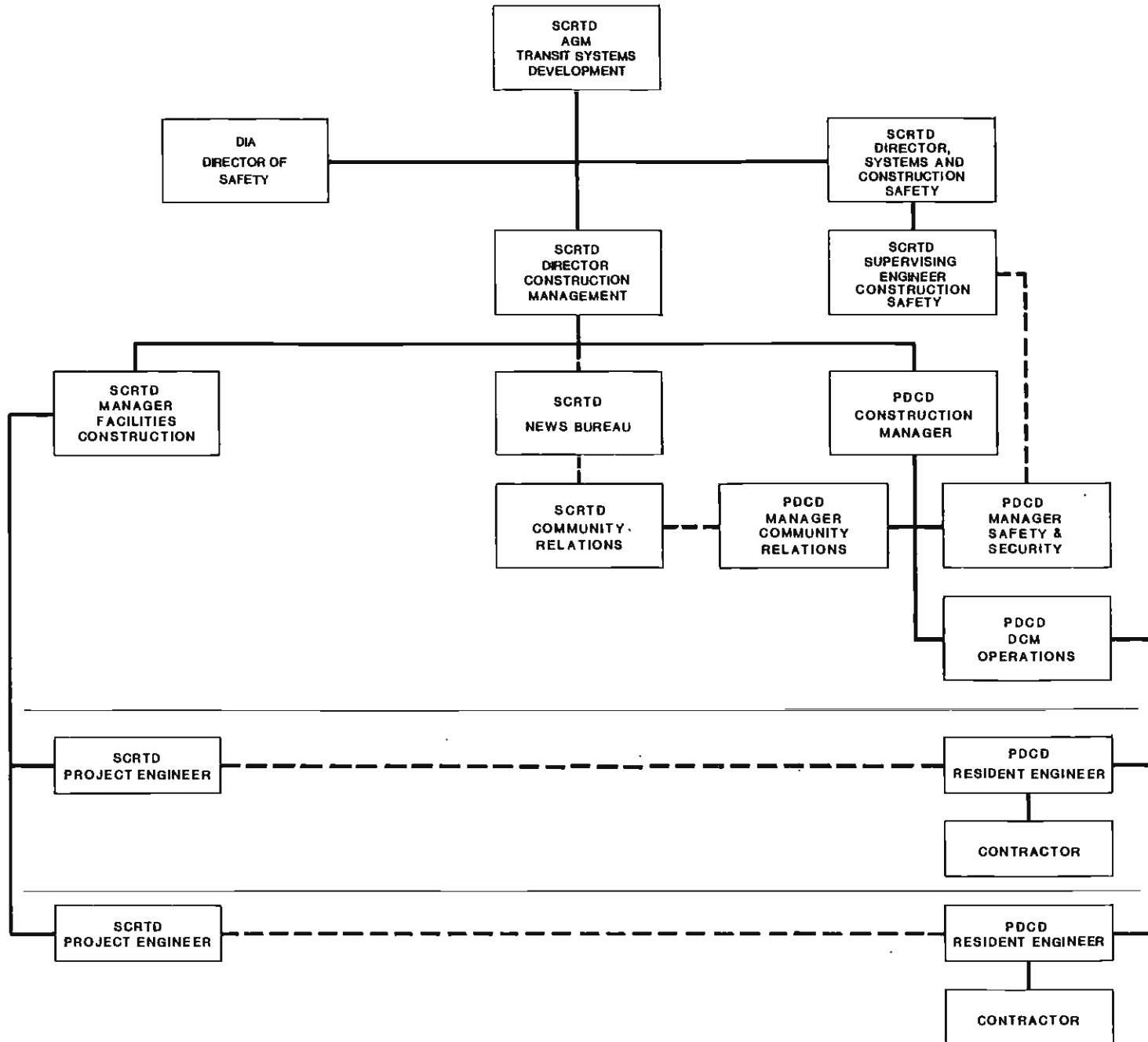
1.3 DIA DIRECTOR OF SAFETY

After notification of the emergency by the PDCD-MS/S, and after having been given all available data, the DIA Director of Safety or designee, who shall be on 24-hour call and have a pager in his/her possession at all times, shall make his/her required notifications and proceed to the scene of the emergency, if required.

1.4 CONTRACTOR

Follow the Contractor's Emergency Plan

**METRO RAIL PROJECT
SCR TD EMERGENCY RESPONSE REPRESENTATIVES**



ERM

FIGURE 1-1
1-3

SECTION 2

ERM

SECTION 2

EMERGENCY RESPONSE NOTIFICATION PROCEDURES

2.1 NOTIFICATION PROCEDURES

The following Metro Rail Emergency Reponse Notification Procedures shall be implemented immediately by the listed personnel after occurrence of an accident or incident.

(Reference notification flowcharts: Pages 2-4, 2-5, 2-6.)

1) Contractor

Ensure the following are immediately notified about an emergency:

- 1) Local Emergency Response 9.1.1
- 2) Contractor Mine Rescue Squad (if required)
- 3) PDCD Resident Engineer
- 4) OSHA - if required

2) PDCD Resident Engineer

Ensure the following are notified immediately about an emergency:

- 1) Local Emergency Response 9.1.1
- 2) Contractor
- 3) PDCD Emergency Response Manager
- 4) PDCD Manager, **Safety and Security**
- 5) PDCD Community Relations Manager

3) PDCD Emergency Response Manager

Ensure the following are notified immediately about an emergency:

- 1) PDCD Manager, **Safety and Security**
- 2) PDCD Resident Engineer(s)
- 3) SCRTD Metro Rail Emergency Response Manager

4) PDCD Manager Safety and Security

Ensure the following are notified immediately about an emergency:

- 1) SCRTD Supervisory Engineer, Construction Safety
- 2) DIA Director of Safety
- 3) PDCD Community Relations

5) PDCD Community Relations Manager

Ensure the following are notified immediately about an emergency:

- 1) SCRTD News Bureau
- 2) SCRTD Local Government and Community Affairs

6) SCRTD Metro Rail Emergency Response Manager

Ensure the following are notified immediately about an emergency:

- 1) SCRTD AGM Metro Rail
- 2) SCRTD Project Engineer
- 3) SCRTD Community Relations

7) SCRTD Supervising Engineer Construction Safety

Ensure the following are notified immediately about an emergency:

- 1) SCRTD Director of Systems and Construction Safety
- 2) SCRTD Transit Police Dispatch (if required)

8) SCRTD Assistant General Manager, Metro Rail

Ensure the following are notified immediately about an emergency:

- 1) SCRTD General Manager (if required)

9) DIA Director of Safety

Ensure the following are notified immediately about an emergency:

- 1) DIA, Managing Director
- 2) Insurance Carrier

2.2 Initial Emergency Notification Information to be Provided by Caller:
(See Appendix B-3)

- o Time of Accident/Incident
- o Date of Accident/Incident
- o Location of Accident/Incident
- o Metro Rail Contract Number
- o Brief Description of Accident
- o Number of injuries/fatalities
- o Name of caller
- o Telephone number where caller can be contacted

2.3 Method of Communication

During and after working hours, the primary method of communication shall be via land line with the pager and cellular phone used as backup.

The contact after office hours is as follows:

- o The PDCD Emergency Response Manager (ERM)
- o The PDCD Manager, Safety and Security (MS/S)
- o The SCRTD Director, Construction Management(DCM)

2.4 General Information - SCRTD and PDCD

Each individual required to make emergency calls shall have the current telephone directory provided in Appendix A. The Directory shall be in the responsible individuals possession at all times. Necessary corrections shall be brought immediately to the attention of the PDCD Manager Safety and Security.

2.5 Training

All SCRTD and PDCD employees acting as part of the Metro Rail Construction ERP shall be given step-by-step training in how to respond, in the use of cellular telephones, pagers, and in interaction with SCRTD Transit Police, Fire Department, Los Angeles Police Department and Contractor Personnel.

2.6 Test Emergency Response Procedures

Periodically an emergency shall be simulated to verify that Emergency Response procedures are followed and that the proper persons are informed.

A simulated emergency test shall be conducted at least every three months. If an actual emergency occurs during the three previous months, the simulated test may not be required. The simulated emergency shall be initiated by the SCRTD Director, System and Construction Safety.

2.7 Informational Sign(s)

SCRTD shall provide informational sign(s) to all Contractors on the Metro Rail Project. The signs will list two Emergency Response numbers: 9.1.1 and SCRTD (Police) Dispatch, (213) 972-6280. The Contractor shall post these signs within the limits of the work area and/or in location(s) readily visible from the area immediately adjacent to the construction site. Illustration(s) of the informational sign(s) are included in the Appendix B-6.

OFF-SHIFT EMERGENCY. EMERGENCY REPORTED TO 911 OR RTD (POLICE) DISPATCH

ERM

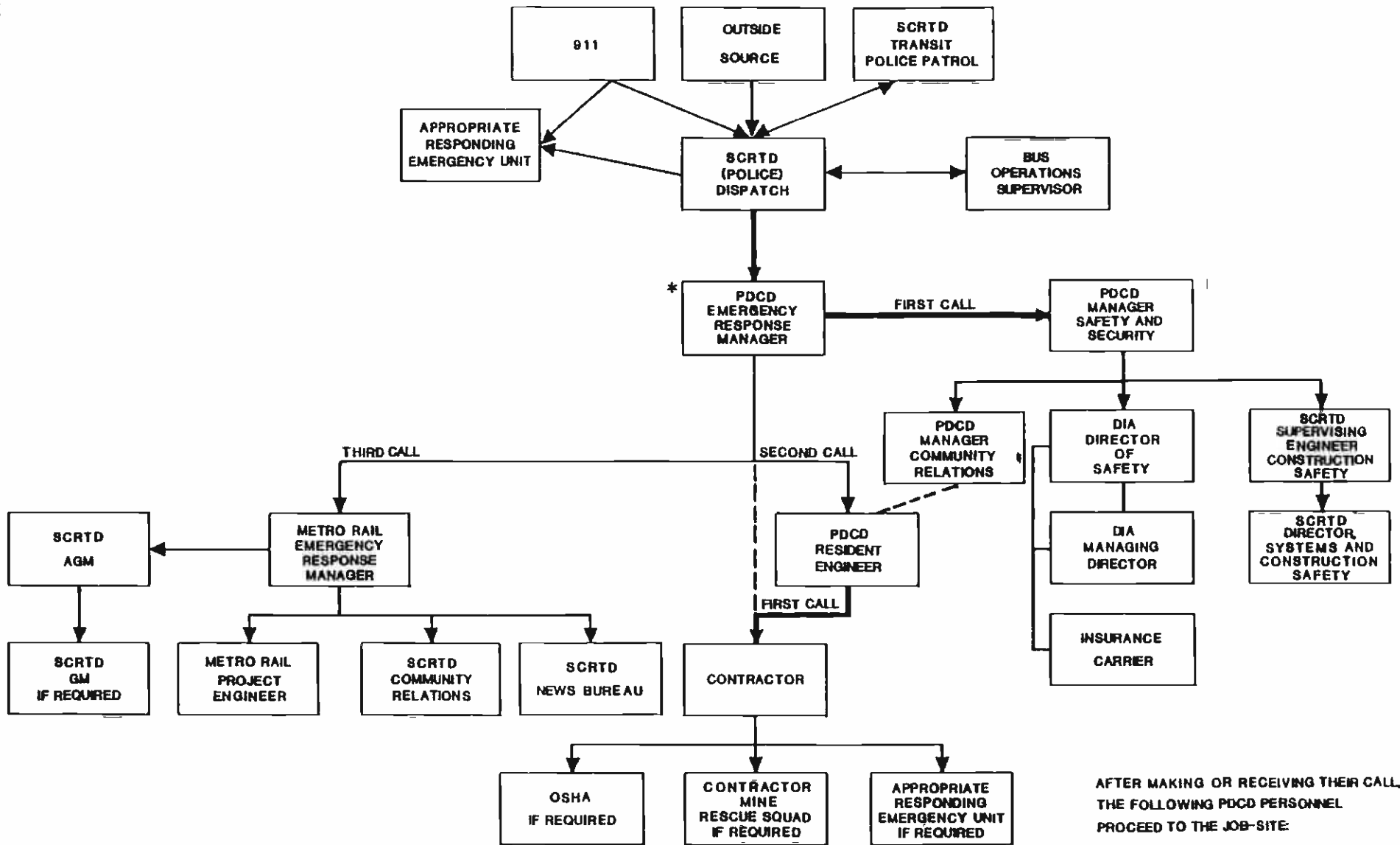


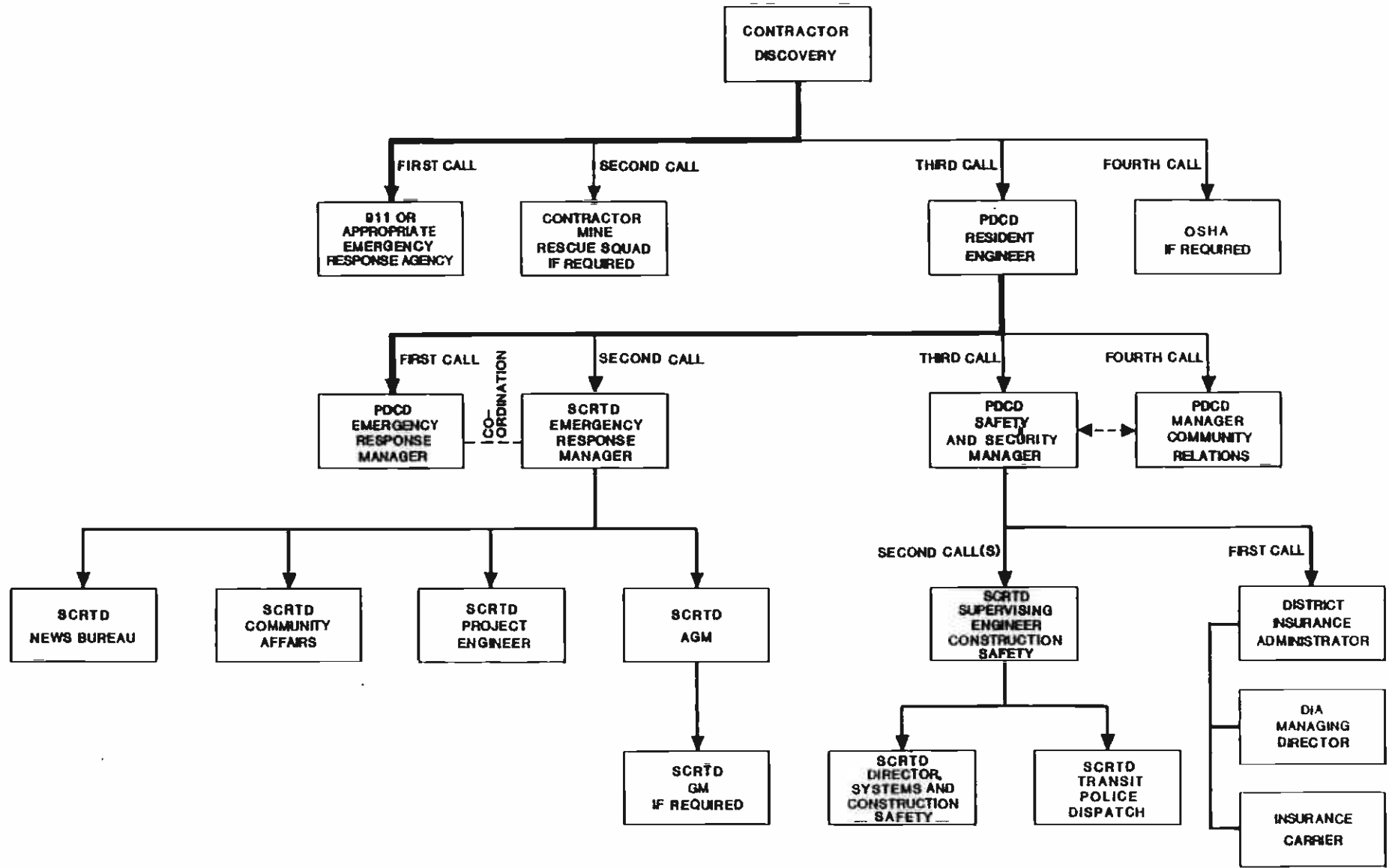
FIGURE 2-1
2-4

AFTER MAKING OR RECEIVING THEIR CALL, THE FOLLOWING PDCD PERSONNEL PROCEED TO THE JOB-SITE:

1. EMERGENCY RESPONSE MANAGER(S)
2. SAFETY MANAGER
3. RESIDENT ENGINEER

* EMERGENCY RESPONSE MANAGER: PDCD CM, DCM-O, DCM-E

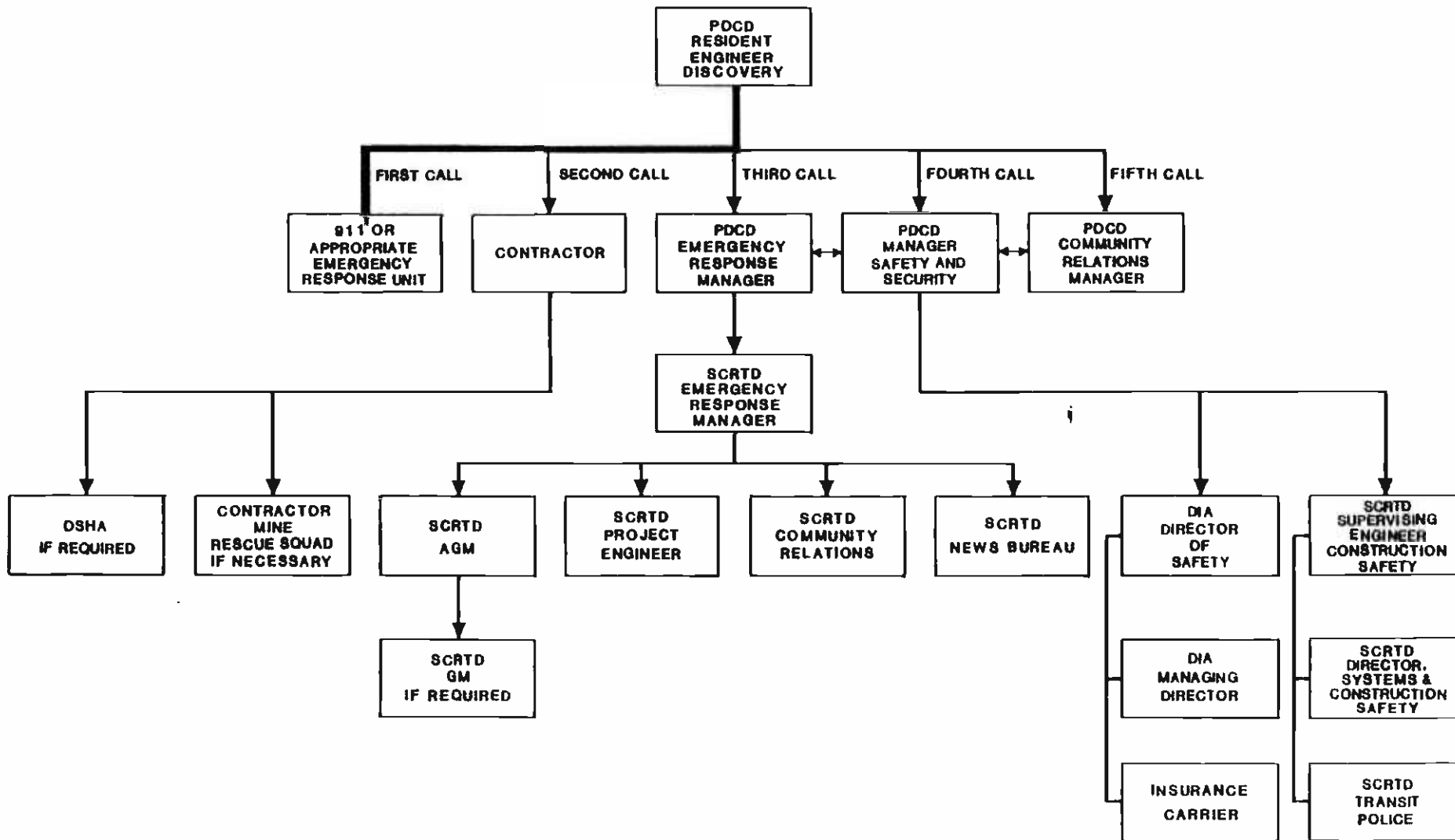
DURING WORKING HOURS - DISCOVERY BY CONTRACTOR



ERM

FIGURE 2-2
2-5

DURING WORKING HOURS - DISCOVERY BY PDCD



ERM
2-6
FIGURE 2-3

SECTION 3

LOS ANGELES DEPARTMENT OF TRANSPORTATION

3.1 SCHEDULED STREET OPENINGS/CLOSURES

Delays and/or cancellations to scheduled street closures or street reopenings shall be reported immediately to Los Angeles Department of Transportation (LADOT) by the PDCD Resident Engineer.

3.2 EMERGENCY STREET CLOSURES

Emergency street closures resulting in damaged utility lines or due to failure of the Contractor's equipment must also be reported immediately to LADOT.

3.3 LADOT EMERGENCY TELEPHONE CONTACTS

The following must be notified when any of the above incidents occur:

LADOT Weekdays 7:00 a.m. to 5:00 p.m. (213) 485-2610
Off hours, Saturday, Sunday, Holidays

Mr. Paul Ono (213) 532-2495
Mr. James Okazaki (818) 458-8826

The following information must be given:

- o Identify yourself and who you represent.
- o Specific location of closure.
- o Brief description of incident resulting in street closure or delay in reopening.
- o Estimated time street will be reopened.
- o Contractor's name and phone number.
- o Any other information LADOT requests that you have knowledge of.

SECTION 4

SECTION 4

INVESTIGATION, REPORTS, DOCUMENTATION

4.1 INVESTIGATION

For major accidents as defined in Appendix B-2, an investigation committee shall be formed consisting of members of the SCRTD, PDCD and DIA Metro Rail Safety. This committee will be chaired by the PDCD - MS/S and will be responsible for collecting the preliminary accident information and documents; ensuring that the necessary measurements, photographs and sketches are obtained before the scene is disturbed by repair operations and conducting necessary witness interviews. If the investigation involves other SCRTD Departments or other Federal, State or local safety-related agencies, representatives from these departments and agencies shall have representation on the committee as deemed appropriate by the committee.

The investigation process shall follow all pertinent SCRTD, Federal and State investigation procedures, and shall include:

- o A determination of all facts and circumstances involved.
- o An analysis of what occurred.
- o A determination of the probable cause.
- o Recommendations to prevent similar occurrences.

4.2 REPORTS

In addition to the accident/incident reports required in the SCRTD Safety and Security Manual, the following reports shall be prepared and distributed. Copies of all reports shall be transmitted to the SCRTD-ERM.

4.2.1 Initial Emergency Response Report

This report shall be completed by the PDCD-ERM receiving the first call within 24 hours. The report shall be distributed to:

PDCD: CM, MS/S, RE, DCM.
SCRTD: DCM, DSCS, DIA.

A form for this report is included in the Appendix (B-3).

4.2.2 Investigation Reports

- o The initial report shall be a detailed written report prepared by PDCD-MS/S within 48 hours after completion of the initial investigation. Distribution will be the same as for the initial emergency report. In most cases, this report will also serve as the final close-out report.

PDCD

- o Investigation Progress Report for major accident (as defined in Appendix B-2) will be accomplished on a bi-weekly basis, and will detail the status of on-going actions. For other incidents informal progress reports will not be generated. However, the PDCD-MS/S will report progress to the CM in the weekly safety work activities reports.
- o The PDCD - MS/S will prepare and distribute a final close-out report within 48 hours of the finalization of the report. The final report shall include practical/feasible recommendations for precluding recurrence. The final report will be formally provided to SCRTD and DIA under the CM's signature.

APPENDIX A

Revised 9/89

ERM

METRO RAIL

CONSTRUCTION EMERGENCY RESPONSE TELEPHONE LIST

ORGANIZATION	POSITION	RESPONSIBLE INDIVIDUAL	TELEPHONE
<u>PDCD</u>			
	PDCD EMERGENCY RESPONSE MANAGER-(DCM-OPS)	H. C. SCOTT	O - (213) 489-6990 R - (213) 695-3622 P - (213) 565-0558 C - (213) 760-1180
	- CONSTRUCTION MANAGER	M. L. POLACEK	O - (213) 489-6974 R - (818) 348-4692 P - (213) 565-0560
	- MANAGER, SAFETY/ SECURITY	C. A. KELSO	O - (213) 489-6978 R - (213) 620-1820 P - (213) 565-0548 C - (213) 760-1181
	- SYSTEMWIDE SAFETY INSPECTOR (EVENINGS)	R. S. HARRIS	O - (213) 489-6931 R - (714) 985-8331 P - (213) 565-0223
	- MANAGER, COMMUNITY RELATIONS	M. M. MORTON	O - (213) 489-6977 R - (213) 469-1766 P - (213) 565-0553
	- COMMUNITY RELATIONS COORDINATOR	E. V. SELLS	O - (213) 489-6961 R - (818) 547-3141 P - (213) 565-0723

C = CELLULAR
O = OFFICE
R = RESIDENCE
P = PAGER

METRO RAIL

CONSTRUCTION EMERGENCY RESPONSE TELEPHONE LIST

ORGANIZATION	POSITION	RESPONSIBLE INDIVIDUAL	TELEPHONE
<u>SCR TD</u>	SCR TD EMERGENCY RESPONSE MANAGER (DCM)	S. K. LOUIS	O - (213) 972-3830 R - (213) 791-0020 P - (213) 565-0538 C - (213) 760-1182
	- ASSISTANT GENERAL MANAGER (ACTING)	R. J. MURRAY	O - (213) 972-3910 R - (818) 965-5949 P - (213) 565-0536
	- MANAGER FACILITY CONSTRUCTION	F. A. QUESADA	O - (213) 972-3825 R - (818) 441-2579 P - (213) 565-0544
	- SUPERVISING ENGINEER	V. H. SMITH	O - (213) 972-3838 R - (818) 888-9117 P - (213) 565-0540
	- SUPV. CONST. SAFETY ENGINEER	B. M. ISHKANIAN	O - (213) 972-3814 R - (213) 452-5486 R - (805) 969-6020 P - (213) 565-8833
	- SENIOR ENGINEER CONSTRUCTION SAFETY	D. FORD	O - (213) 972-3819 R - (213) 489-2512 P - (213) 565-8837
	- DIRECTOR CONST/SYSTEMS SAFETY	H. E. STOREY	O - (213) 972-3810 R - (818) 999-1140 P - (213) 565-0539
	- TRANSIT POLICE	DISPATCHER	O - (213) 972-6280
	- GOVERNMENT AND PUBLIC AFFAIRS	M. HERNANDEZ	O - (213) 972-4695 R - (213) 724-9353 P - (213) 259-5572
	- NEWS BUREAU	GREG DAVY	O - (213) 972-4674 R - (213) 645-8727

C = Cellular
O = Office
R = Residence
P = Pager

METRO RAIL

CONSTRUCTION EMERGENCY RESPONSE TELEPHONE LIST

<u>ORGANIZATION</u>	<u>POSITION</u>	<u>RESPONSIBLE INDIVIDUAL</u>	<u>TELEPHONE</u>
<u>DIA</u>	- DIRECTOR, SAFETY	G. H. BROWN	O - (213) 688-0981 R - (213) 661-8775 P - (213) 565-0541
	- MANAGING DIRECTOR	C. J. MITRANI	O - (213) 688-0981 R - (714) 694-9635
	- ARGONAUT INSURANCE	L. EVANS	O - (213) 930-3740 R - (818) 794-6558
		D. PUCKETT	O - (213) 930-3743 R - (805) 264-0772

C = CELLULAR
R = RESIDENCE
O = OFFICE
P = PAGER

CONSTRUCTION EMERGENCY RESPONSE TELEPHONE LIST

CONTRACT NO. A112

CONTRACTOR: ILLINOIS-WALSH

<u>ORGANIZATION</u>	<u>POSITION</u>	<u>RESPONSIBLE INDIVIDUAL</u>	<u>TELEPHONE</u>
<u>PDCD</u>	- RESIDENT ENGINEER:	D.E.(DALE) NYBERG	O - (213) 972-7962 R - (818) 796-5076 P - (213) 565-0559
	- CHIEF INSPECTOR:	GARY RUDY	O - (213) 972-7964 R - (818) 367-1693
<u>SCRTD</u>	- PROJECT ENGINEER:	A.W. (AL)GRIESBACH	O - (213) 972-3833 R - (818) 914-1648 P - (213) 565-0547
<u>CONTRACTOR</u>	- PROJECT MANAGER:	MIKE COOPER	O - (213) 621-4181 R - (213) 294-9801
	- PROJECT ENGINEER:	THIEU NUGNYEN	O - (213) 621-4181
	- SUPERINTENDENT:	SCOTT CLARK	O - (213) 621-4181 R - (213) 837-9757
	- SAFETY REPRESENTATIVE:	ROBERT SWISHER	O - (213) 621-4181 R - (818) 331-4667
	- DIVISION OFFICE		O - (408) 647-8255

C = CELLULAR
O = OFFICE
R = RESIDENCE
P = PAGER

CONSTRUCTION EMERGENCY RESPONSE TELEPHONE LIST

CONTRACT NO. A130

CONTRACTOR: TUTOR-SALIBA/PERINI

<u>ORGANIZATION</u>	<u>POSITION</u>	<u>RESPONSIBLE INDIVIDUAL</u>	<u>TELEPHONE</u>
<u>PDCD</u>	- RESIDENT ENGINEER	J.P.(JOHN) WHYTE	O - (213) 687-4002 R - (818) 247-7075 P - (213) 565-0549
	- OFFICE ENGINEER	W.E. (WARREN) JOHNSON	O - (213) 687-4002 R - (714) 871-3227
	- CHIEF INSPECTOR	G.E. (GEORGE) ROWE	O - (213) 687-4002 R - (818)762-5306
<u>SCRTD</u>	- PROJECT ENGINEER	AL VARDANIAN	O - (213) 972-3828 R - (818) 340-3104 P - (213) 565-0542
<u>CONTRACTOR</u>	- PROJECT MANAGER	ERIC CARLIN	O - (213) 620-1833 R
	- PROJECT ENGINEER	CHARLES FARNSWORTH	O - (213) 620-1833 R - (805) 583-1672
	- PROJECT ENGINEER	TOM KILMARTIN	O - (213) 620-1833 R - (213) 479-3775
	- SAFETY REPRESENTATIVE	JOE GARNER	O - (213) 620-1833 R - (805) 268-1887
	- HOME OFFICE	JOSH RANDALL	O - (818) 362-8391 R - (805) 583-1570
	- CEO	RON TUTOR	O - (818) 362-8391

C = CELLULAR
O = OFFICE
R = RESIDENCE
P = PAGER

CONSTRUCTION EMERGENCY RESPONSE TELEPHONE LIST

CONTRACT NO. A135

CONTRACTOR: TUTOR-SALIBA/PERINI

<u>ORGANIZATION</u>	<u>POSITION</u>	<u>RESPONSIBLE INDIVIDUAL</u>	<u>TELEPHONE</u>
<u>PDCD</u>	- RESIDENT ENGINEER:	A.C. FERRUCCIO	O - (213) 687-3383 R - (213) 216-4307 P - (213) 565-0551
	- OFFICE ENGINEER:	JUSTIN BELIZAIRE	O - (213) 687-3383 R - (213) 837-2305
	- CHIEF INSPECTOR:	RALPH RATLIFF	O - (213) 687-3383 R - (818) 367-5824 R - (209) 855-4175
<u>SCRTD</u>	- PROJECT ENGINEER:	AL VARDANIAN	O - (213) 972-3838 R - (818) 340-3104 P - (213) 565-0542
<u>CONTRACTOR</u>	- PROJECT MANAGER:	ERIC CARLIN	O - (213) 620-1833
	- PROJECT ENGINEER:	CHARLES FARNSWORTH	O - (213) 620-1833 R - (805) 583-1672
	- GENERAL SUPERINTENDENT	BOB HIGGINS	O - (213) 620-1833 R - (805) 522-2730
	- SAFETY REPRESENTATIVE:	HAROLD HARSHBERGER	O - (213) 620-1833 R - (714) 793-0493
	- HOME OFFICE	(JOSH RANDALL)	O - (818) 362-8391
	- CEO	RON TUTOR	O - (818) 362-8391
<u>RAILROADS</u>	- AMTRAK SUPERINTENDENT	LOU MAYBERRY	O - (213) 683-6728 R - (714) 992-0427
	- LAUPT SUPERVISOR	BOB PFISTER	O - (213) 625-2672 R - (818) 982-5577

C = CELLULAR
O = OFFICE
R = RESIDENCE
P = PAGER

CONSTRUCTION EMERGENCY RESPONSE TELEPHONE LIST

CONTRACT NO. A141

CONTRACTOR: TUTOR-SALIBA/S. J. GROVES

<u>ORGANIZATION</u>	<u>POSITION</u>	<u>RESPONSIBLE INDIVIDUAL</u>	<u>TELEPHONE</u>
<u>PDCD</u>	- RESIDENT ENGINEER:	R. C. (ROGER) VITTI	O - (213) 621-0256 R - (818) 907-6112 P - (213) 816-7219
	- OFFICE ENGINEER:	MARCY SZARAMA	O - (213) 621-0256 R - (213) 477-6968
	- CHIEF INSPECTOR:	K. H. (KEN) FOSSUM	O - (213) 621-0256 R - (805) 251-9384
<u>SCRTD</u>	- PROJECT ENGINEER:	VAN SMITH	O - (213) 972-3838 R - (818) 888-9117 P - (213) 565-0540
<u>CONTRACTOR</u>	- PROJECT MANAGER:	DENNIS POULTON	O - (213) 621-2967 R - (714) 744-1851
	- PROJECT ENGINEER:	STEVE NEELS	O - (213) 621-2967 R - (818) 248-7217
	- SAFETY REPRESENTATIVE:	WALLY ZAVATTERO	O - (213) 621-2967 R - (818) 248-0291
	- HOME OFFICE:	JOSH RANDALL	O - (818) 362-8391
	- CEO		O - (818) 362-8391 R -

C = Cellular
O = Office
R = Residence
P = Pager

CONSTRUCTION EMERGENCY RESPONSE TELEPHONE LIST

CONTRACT NO. A144

CONTRACTOR: OPERATIONS CONSULTANTS, INC.

<u>ORGANIZATION</u>	<u>POSITION</u>	<u>RESPONSIBLE INDIVIDUAL</u>	<u>TELEPHONE</u>
<u>PDCD</u>	- RESIDENT ENGINEER	A. C. FERRUCCIO	O - (213) 485-1915 R - (213) 216-4307 P - (213) 565-0551
<u>SCRTD</u>	- PROJECT ENGINEER	AL VARDANIAN	O - (213) 972-3838 R - (818) 340-3104 P - (213) 565-0542
<u>CONTRACTOR</u>	- PLANT MANAGER	GENE NELMS	O - (213) 485-1915 JMM (213) 217-0061 R - (213) 543-4900

C = CELLULAR
O = OFFICE
R = RESIDENCE
P = PAGER

CONSTRUCTON EMERGENCY RESPONSE TELEPHONE LIST

CONTRACT NO. A145/145A

CONTRACTOR: GUY F. ATKINSON CONSTRUCTION

<u>ORGANIZATION</u>	<u>POSITION</u>	<u>RESPONSIBLE INDIVIDUAL</u>	<u>TELEPHONE</u>
<u>PDCD</u>	- RESIDENT ENGINEER:	D.R.(DON) NELSON	O - (213) 622-7402 R - (714) 593-7854 P - (213) 565-0537
	- OFFICE ENGINEER	BRUNO KALIFA	O - (213) 622-7334 R - (213) 278-0244
	- CHIEF INSPECTOR	LARS LUNDBERG	O - (213) 622-7334 R - (805) 583-8688
<u>SCRTD</u>	- PROJECT ENGINEER	VASAN SRINIVASAN	O - (213) 972-3829 R - (714) 861-8944 P - (213) 565-6255
<u>CONTRACTOR</u>	- PROJECT MANAGER	JOHN MC DONALD	O - (213) 627-5780 R - (818) 369-1595
	- GENERAL SUPER	ROD TESKEY	O - (213) 622-8204 R - (213) 660-8823
	- PROJECT ENGINEER	AL GONZALEZ	O - (213) 627-5780 R - (805) 297-1852
	- SAFETY REPRESENTATIVE	SCOTT WALTERS	O - (213) 622-8155 R - (213) 945-0740
	- HOME OFFICE		O - (415) 876-1000
	- SAFETY MANAGER	JOHN SPENCE	O - (415) 876-1000
	- VP	TOM BROWN	O - (415) 876-1000

C = CELLULAR
O = OFFICE
R = RESIDENCE
P = PAGER

CONSTRUCTON EMERGENCY RESPONSE TELEPHONE LIST

CONTRACT NO. A146

CONTRACTOR: SHANK-OHBAYASHI

<u>ORGANIZATION</u>	<u>POSITION</u>	<u>RESPONSIBLE INDIVIDUAL</u>	<u>TELEPHONE</u>
<u>PDCD</u>	- RESIDENT ENGINEER:	S. J. (STEVE) NAVIN	O - (213) 622-9900 R - (805) 488-8175 P - (213) 565-0557
	- OFFICE ENGINEER:	J. H. (JERRY) OSTBERG	O - (213) 622-9900 R - (818) 793-8304
	- CHIEF INSPECTOR:	R. A. (DICK) WHITE	O - (213) 622-9900 R - (213) 382-9649
<u>SCRTD</u>	- PROJECT ENGINEER:	VAN SMITH	O - (213) 972-3838 R - (818) 888-9117 P - (213) 565-0540
<u>CONTRACTOR</u>	- PROJECT MANAGER:	GERALD STOKES	O - (213) 381-0160 R - (818) 952-5145
	- GENERAL SUPERINTENDENT:	STEVE WARDWELL	O - (213) 488-1363 R - (818) 358-7842
	- SAFETY REPRESENTATIVE:	TOM GROGAN	O - (213) 488-1363 R - (818) 248-6000
	- HOME OFFICE		O - (303) 355-9552 or
	- CEO	MIKE SHANK	O - (213) 381-0160

C = CELLULAR
O = OFFICE
R = RESIDENCE
P = PAGER

CONSTRUCTION EMERGENCY RESPONSE TELEPHONE LIST

CONTRACT NO. A157

CONTRACTOR: _____

<u>ORGANIZATION</u>	<u>POSITION</u>	<u>RESPONSIBLE INDIVIDUAL</u>	<u>TELEPHONE</u>
---------------------	-----------------	-----------------------------------	------------------

C = CELLULAR
O = OFFICE
R = RESIDENT
P = PAGER

CONSTRUCTION EMERGENCY RESPONSE TELEPHONE LIST

CONTRACT NO. A165

CONTRACTOR: GRANITE CONSTRUCTION CO.

<u>ORGANIZATION</u>	<u>POSITION</u>	<u>RESPONSIBLE INDIVIDUAL</u>	<u>TELEPHONE</u>
<u>PDCD</u>	- RESIDENT ENGINEER:	P.D. (DAN RIGGS)	O - (213) 689-4426 R - (213) 578-7961 P - (213) 565-0554
	- OFFICE ENGINEER:	S. (SARKIS) TERGEVORKIAN	O - (213) 689-4821 R - (818) 243-4420
	- CHIEF INSPECTOR:	T. C. (TED) BILLS	O - (213) 689-4821 R - (213) 216-7702
<u>SCRTD</u>	- PROJECT ENGINEER:	AL NIJLAND	O - (213) 972-3836 R - (714) 841-6016 P - (213) 565-0732
<u>CONTRACTOR:</u>	- PROJECT MANAGER:	KEN BESSE	O - (213) 689-9226 R - (805)-252-1822
	- PROJECT ENGINEER:	BOD STALLARD	O - (213) 689-9392 R - (805) 252-9253
	- SUPERINTENDENT:	LARRY ROSEN	O - (213) 689-9392
	- SAFETY REPRESENTATIVE:	JOHN MAC FADYEN	O - (213) 689-9392 R - (213) 830-3065
	- HOME OFFICE		O - (408) 724-1011
	- VICE PRESIDENT:	GEORGE CAREY	O - (408) 722-2716 R - NO HOME PHONE
	- MANAGER, SAFETY:	BRUCE SUMMERS BILL JACKSON	O - (408) 761-4758 O - (408) 761-4759

C = CELLULAR
O = OFFICE
R = RESIDENCE
P = PAGER

CONSTRUCTION EMERGENCY RESPONSE TELEPHONE LIST

CONTRACT NO. A167

CONTRACTOR: TUTOR-SALIBA

<u>ORGANIZATION</u>	<u>POSITION</u>	<u>RESPONSIBLE INDIVIDUAL</u>	<u>TELEPHONE</u>
<u>PDCD</u>	- RESIDENT ENGINEER:	P. D. (DAN) RIGGS	O - (213) 689-4426 R - (213) 578-7961 P - (213) 565-0554
	- OFFICE ENGINEER:	S. (SARKIS) TERGEVORKIAN	O - (213) 689-4426 R - (818) 243-4420
	- CHIEF INSPECTOR:	T. C. (TED) BILLS	O - (213) 689-4426 R - (213) 216-7702
<u>SCRTD</u>	- PROJECT ENGINEER:	AL NIJLAND	O - (213) 972-3836 R - (714) 841-6016 P - (213) 565-0732
<u>CONTRACTOR:</u>	- PROJECT MANAGER:	B. F. MACON, JR.	O - (213) 624-9591 R - (805) 255-2516
	- SAFETY REPRESENTATIVE:	J. WILLIAMS	O - (213) 624-9591 R - (714) 283-1922
	- PROJECT ENGINEER:	G. ELGENSON	O - (213) 624-9591 R - (818) 362-7653
	- PROJECT SUPERINTENDENT	J. FRYE	O - (213) 624-9591 R - (213) 617-3136

C = CELLULAR
O = OFFICE
R = RESIDENCE
P = PAGER

CONSTRUCTION EMERGENCY RESPONSE TELEPHONE LIST

CONTRACT NO. A171

CONTRACTOR: SHANK-OHBAYASHI

<u>ORGANIZATION</u>	<u>POSITION</u>	<u>RESPONSIBLE INDIVIDUAL</u>	<u>TELEPHONE</u>
<u>POCD</u>	- RESIDENT ENGINEER:	R. E. (BOB) GRIFFITH	O - (213) 413-2223 R - (714) 946-4195 P - (213) 565-0555
	- OFFICE ENGINEER:	L. K. (LOWELL) SHIFFLET	O - (213) 413-2223 R - (213) 487-3408
	- CHIEF INSPECTOR:	A. (ALAN) HODGE	O - (213) 413-2223 R - (818) 709-2735
<u>SCRTD</u>	- PROJECT ENGINEER:	JOHN BILCO	O - (213) 972-3837 R - (213) 479-7693 P - (213) 565-0552
<u>CONTRACTOR</u>	- PROJECT MANAGER:	GERALD STOKES	O - (213) 381-0160 R - (818) 952-5145
	- GENERAL SUPERINTENDENT:	JIM TROUNCE	O - (213) 381-0160 R - (213) 834-6947
	- SAFETY REPRESENTATIVE:	PAT CHIODO	O - (213) 381-0160 R - (805) 268-0740 C - (805) 657-8280
	- HOME OFFICE		O - (303) 355-9552 or O - (213) 381-0160
	- CEO:	MIKE SHANK	O - (303) 355-9552

C = Cellular
O = Office
R = Residence
P = Pager

CONSTRUCTION EMERGENCY RESPONSE TELEPHONE LIST

CONTRACT NO. A175

CONTRACTOR: TUTOR-SALIBA/PERINI

<u>ORGANIZATION</u>	<u>POSITION</u>	<u>RESPONSIBLE INDIVIDUAL</u>	<u>TELEPHONE</u>
<u>PDCD</u>	- RESIDENT ENGINEER:	R. E. (BOB) GRIFFITH	O - (213) 413-2223 R - (714) 946-4195 P - (213) 565-0555
	- OFFICE ENGINEER:	JOHN McGAUGHY	O - (213) 413-2223
	- CHIEF INSPECTOR:	A. (ALAN) HODGE	O - (213) 413-2223 R - (818) 709-2735
<u>SCRTD</u>	- PROJECT ENGINEER:	JOHN BILCO	O - (213) 972-3837 R - (213) 479-7693 P - (213) 565-0552
<u>CONTRACTOR</u>	- PROJECT MANAGER:	DICK LUTZ	O - (213) 413-5941 R - (714) 840-0262
	- GENERAL SUP.	WALLY WRIGHT	O - (213) 413-5941 R - (805) 581-0461
	- PROJECT ENGINEER:	SCOTT BRELSFORD	O - (213) 413-5941 R - (818) 886-6906
	- SAFETY REPRESENTATIVE:	JAMES BROWN	O - (213) 413-5941 R - (714) 949-8241
	- HOME OFFICE	JOSH RANDALL	O - (818) 362-8391 R - (805) 583-1570
	- CEO	RON TUTOR	O - (818)362-8391

C = CELLULAR
O = OFFICE
R = RESIDENCE
P = PAGER

CONSTRUCTION EMERGENCY RESPONSE TELEPHONE LIST

CONTRACT NO. A175

CONTRACTOR: TUTOR-SALIBA/PERINI

<u>ORGANIZATION</u>	<u>POSITION</u>	<u>RESPONSIBLE INDIVIDUAL</u>	<u>TELEPHONE</u>
<u>PDCD</u>	- RESIDENT ENGINEER:	R. E. (BOB) GRIFFITH	O - (213) 413-2223 R - (714) 946-4195 P - (213) 565-0555
	- OFFICE ENGINEER:	JOHN McGAUGHY	O - (213) 413-2223 R - (818) 843-5084
	- CHIEF INSPECTOR:	R. M. (SMITTY) SMITH	O - (213) 413-2223 R - (805) 722-1944
<u>SCRTD</u>	- PROJECT ENGINEER:	JOHN BILCO	O - (213) 972-3837 R - (213) 479-7693 P - (213) 565-0552
<u>CONTRACTOR</u>	- PROJECT MANAGER:	DICK LUTZ	O - (213) 413-5941 R - (714) 840-0262
	- GENERAL SUP.	WALLY WRIGHT	O - (213) 413-5941 R - (805) 581-0461
	- PROJECT ENGINEER:	SCOTT BRELSFORD	O - (213) 413-5941 R - (818) 886-6906
	- SAFETY REPRESENTATIVE:	JAMES BROWN	O - (213) 413-5941 R - (714) 949-8241
	- HOME OFFICE	JOSH RANDALL	O - (818) 362-8391 R - (805) 583-1570
	- CEO	RON TUTOR	O - (818) 362-8391

C = CELLULAR
O = OFFICE
R = RESIDENCE
P = PAGER

CONSTRUCTION EMERGENCY RESPONSE TELEPHONE LIST

CONTRACT NO. A187

CONTRACTOR:

<u>ORGANIZATION POSTION</u>	<u>RESPONSIBLE INDIVIDUAL</u>	<u>TELEPHONE</u>
-----------------------------	-----------------------------------	------------------

C = CELLULAR
O = OFFICE
R = RESIDENCE
P = PAGER

CONSTRUCTION EMERGENCY RESPONSE TELEPHONE LIST

CONTRACT NO. A610/A115

CONTRACTOR: CALIFORNIA ENGINEERING CONTRS.

<u>ORGANIZATION</u>	<u>POSITION</u>	<u>RESPONSIBLE INDIVIDUAL</u>	<u>TELEPHONE</u>
<u>PDCD</u>	- RESIDENT ENGINEER:	D.E. (DALE) NYBERG	O - (213) 972-7962 R - (818) 796-5076 P - (213) 565-0559
	- OFFICE ENGINEER:	E.B.(EUCLID) RAMOS	O - (213) 972-7963 R - (818) 447-8092
	- CHIEF INSPECTOR	GARY RUDY	O - (213) 972-7964 R - (818) 367-1693
	- LEAD INSPECTOR:	JOHN GEYER	O - (213) 972-7965 R - (213) 382-9649
<u>SCRTD</u>	- PROJECT ENGINEER:	R. (BOB) WESLEY	O - (213) 972-3832 R - (213) 305-7538 P - (213) 565-0599
<u>CONTRACTOR</u>	- PROJECT MANAGER:	WAHID TADROS	O - (213) 485-8213 R - (714) 536-4356 C - (213) 248-3759
	- GENERAL SUPT.	TED FRANCO	O - (213) 485-8213 R - (213) 426-2127
	- PROJECT ENGINEER:	JOE THOMPSON	O - (213) 485-8213 R - (818) 609-8828
	- SAFETY REPRESENTATIVE:	GLEN JUDD	O - (213) 485-8213 R - (818) 548-3625
	- OFFICE ENGINEER:	SAMIR TADROS	O - (213) 485-8213 R - (213) 687-0783 - (213) 253-2797
	- HOME OFFICE		O - (415) 965-8600
	- CEO	AZMY TADROS	O - (415) 965-8600

C = CELLULAR
O = OFFICE
R = RESIDENCE
P = PAGER

CONSTRUCTION EMERGENCY RESPONSE TELEPHONE LIST

CONTRACT NO. A612

CONTRACTOR: L.B. FOSTER CO.

<u>ORGANIZATION</u>	<u>POSITION</u>	<u>RESPONSIBLE INDIVIDUAL</u>	<u>TELEPHONE</u>
<u>PDCD</u>	- RESIDENT ENGINEER	GUIDO EYZAGUIRRE	O - (213) 489-6945 R - (805) 751-9152
<u>SCRTD</u>	- PROJECT ENGINEER	B. HANSSON	O - (213) 972-3978

C = CELLULAR
O = OFFICE
R = RESIDENCE
P = PAGER

CONSTRUCTION EMERGENCY RESPONSE TELEPHONE LIST

CONTRACT NO. A615

CONTRACTOR: THE BUDD COMPANY

<u>ORGANIZATION POSITION</u>		<u>RESPONSIBLE INDIVIDUAL</u>	<u>TELEPHONE</u>
<u>PDCD</u>	- RESIDENT ENGINEER	GUIDO EYZAGUIRRE	0 - (213) 489-6945 R - (805) 751-9152
<u>SCRTD</u>	- PROJECT ENGINEER	B. HANSSON	0 - (213) 972-3978

C = CELLUAR
O = OFFICE
R = RESIDENCE
P = PAGER

CONSTRUCTION EMERGENCY RESPONSE TELEPHONE LIST

CONTRACT NO. A616

CONTRACTOR: LORD CORP. INDUSTRIAL PRODUCTS DIV.

<u>ORGANIZATION</u>	<u>POSITION</u>	<u>RESPONSIBLE INDIVIDUAL</u>	<u>TELEPHONE</u>
<u>PDCD</u>	- RESIDENT ENGINEER	N.C.(NEIL)JOHNSON	O - (213) 489-6933 R - Not Available At This Time.
<u>SCRTD</u>	- PROJECT ENGINEER	R. (ROBERT) WESLEY	O - (213) 972-3201 R - (213) 305-7538 P - (213) 565-0599

C = CELLULAR
O = OFFICE
R = RESIDENCE
P = PAGER

CONSTRUCTION EMERGENCY RESPONSE TELEPHONE LIST

CONTRACT NO. A620

CONTRACTOR: GENERAL RAILWAY SIGNALS

<u>ORGANIZATION</u>	<u>POSITION</u>	<u>RESPONSIBLE INDIVIDUAL</u>	<u>TELEPHONE</u>
<u>PDCD</u>	- RESIDENT ENGINEER:	M.P. (MIKE) CASSAGNOL	0 - (213) 489-6948 R - (805) 523-2518 P - (213)
	- OFFICE ENGINEER:		0 - (213) R - (213)
	- CHIEF INSPECTOR:		0 - (213) R - (213)
<u>SCRTD</u>	- PROJECT ENGINEER:	R. P. (BOB) TOWNLEY	0 - (213) 972-3974 R - (818) 286-1577
<u>CONTRACTOR</u>	- PROJECT MANAGER:	KENNETH EMBLING	0 - (716) 783-2247 R - (716) 538-4506
	- PROJECT ENGINEER:		0 - (213) R -
	- SAFETY REPRESENTATIVE:		0 - (213) R - ()
	- HOME OFFICE		
	- CEO		0 - (716) 783-2247

C = CELLULAR
O = OFFICE
R = RESIDENCE
P = PAGER

CONSTRUCTION EMERGENCY RESPONSE TELEPHONE LIST

CONTRACT NO. A630

CONTRACTOR: ANPROTECH

<u>ORGANIZATION</u>	<u>POSITION</u>	<u>RESPONSIBLE INDIVIDUAL</u>	<u>TELEPHONE</u>
<u>PDCD</u>	- RESIDENT ENGINEER	GUIDO D. EYZAGUIRRE	O - (213) 489-6945 R - (805) 254-8731
<u>SCRTD</u>	- PROJECT ENGINEER	B. HANSSON	O - (213) 972-3978

C = CELLULAR
O = OFFICE
R = RESIDENCE
P = PAGER

CONSTRUCTION EMERGENCY RESPONSE TELEPHONE LIST

CONTRACT NO. A631

CONTRACTOR: FISHBACK & MOORE

<u>ORGANIZATION POSITION</u>		<u>RESPONSIBLE INDIVIDUAL</u>	<u>TELEPHONE</u>
<u>PDCD</u>	- RESIDENT ENGINEER	GUIDO EYZAGUIRRE	O - (213) 489-6945 R - (805) 251-9152
<u>SCRTD</u>	- PROJECT ENGINEER	B. HANSSON	O - (213) 972-3978
<u>CONTRACTOR</u>	- PROJECT MANAGER	RON AUSTIN	O - (213) 680-3381 R - (818) 767-6673
	- ASST. PROJECT MANAGER	AL KROJANSKY	O - (213) 680-3381 R - (818) 986-2415
	- GENERAL FOREMAN	JIM ESWORTHY	O - (213) 680-3381 R - (818) 891-7115
	- SAFETY REPRESENTATIVE	C. J. AKERS	O - (213) 680-3381 R - (818) 548-3625

C = CELLUAR
O = OFFICE
R = RESIDENCE
P = PAGER

CONSTRUCTION EMERGENCY RESPONSE TELEPHONE LIST

CONTRACT NO. A640

CONTRACTOR: Bechtel Corp.

<u>ORGANIZATION</u>	<u>POSITION</u>	<u>RESPONSIBLE INDIVIDUAL</u>	<u>TELEPHONE</u>
<u>PDCD</u>	- RESIDENT ENGINEER:	M. (MIKE) LINGENFELTER	O - (213) 807-2132 R - (714) 854-5154
	- OFFICE ENGINEER	C. MC CONNELL	O - (213) 807-5393 R - (714) 681-7762
	- CHIEF INSPECTOR	N/A	N/A
<u>SCRTD</u>	- PROJECT ENGINEER	TED LEWIS	O - (213) 972-3972
<u>CONTRACTOR</u>	- PROJECT MANAGER	SAM EARDLEY	O - (213) 807-2174 R - (714) 748-1147

C = CELLULAR
O = OFFICE
R = RESIDENCE
P = PAGER

CONSTRUCTION EMERGENCY RESPONSE TELEPHONE LIST

CONTRACT NO. A710

CONTRACTOR: MONTGOMERY

<u>ORGANIZATION</u>	<u>POSITION</u>	<u>RESPONSIBLE INDIVIDUAL</u>	<u>TELEPHONE</u>
<u>PDCD</u>	- RESIDENT ENGINEER:	P. H. (PETE) SEMRAD	O - (213) 489-6951 R - (213) 288-0752
<u>SCRTD</u>	- PROJECT ENGINEER:	LIEU PHAM	O - (213) 972-3834 P - (213) 565-0556
<u>CONTRACTOR</u>	- PROJECT MANAGER:	LARRY BYRUM	O - (213) 583-6446

C = CELLULAR
O = OFFICE
R = RESIDENCE
P = PAGER

CONSTRUCTION EMERGENCY RESPONSE TELEPHONE LIST

CONTRACT NO. A732

CONTRACTOR: SIMMONS MACHINE TOOL CORPORATION

<u>ORGANIZATION</u>	<u>POSITION</u>	<u>RESPONSIBLE INDIVIDUAL</u>	<u>TELEPHONE</u>
<u>PDCD</u>	- RESIDENT ENGINEER	NEIL JOHNSON	O - (213) 489-6933 R - Not Available At This Time
<u>SCRTD</u>	- PROJECT ENGINEER	AL GRIESBACH	O - (213) 972-3833 R - (818) 914-1648 P - (213) 565-0574

C = CELLULAR
O = OFFICE
R = RESIDENCE
P = PAGER

CONSTRUCTION EMERGENCY RESPONSE TELEPHONE LIST

CONTRACT NO. A740

CONTRACTOR: FLAKT INC.

<u>ORGANIZATION</u>	<u>POSITION</u>	<u>RESPONSIBLE INDIVIDUAL</u>	<u>TELEPHONE</u>
<u>PDCD</u>	- RESIDENT ENGINEER	P.H.(PETE)SEMRAD	O = (213) 489-6951 R = (213) 288-0752
<u>SCRTD</u>	- PROJECT ENGINEER	LIEU PHAM	O = (213) 972-3834 P = (213) 565-0556
<u>CONTRACTOR</u>	- PROJECT MANAGER	TOM HEAD	O = (919) 760-3111

C = CELLULAR
O = OFFICE
R = RESIDENCE
P = PAGER

CONSTRUCTION EMERGENCY RESPONSE TELEPHONE LIST

CONTRACT NO. A745

CONTRACTOR: FLAKT INC.

<u>ORGANIZATION</u>	<u>POSITION</u>	<u>RESPONSIBLE INDIVIDUAL</u>	<u>TELEPHONE</u>
<u>PDCD</u>	- RESIDENT ENGINEER	P.H.(PETE)SEMRAD	O = (213) 489-6951 R = (213) 288-0752
<u>SCRTD</u>	- PROJECT ENGINEER	LIEU PHAM	O = (213) 237-2004
<u>CONTRACTOR</u>	- PROJECT MANAGER	TOM HEAD	O = (919) 760-3111

C = CELLULAR
O = OFFICE
R = RESIDENCE
P = PAGER

CONSTRUCTION EMERGENCY RESPONSE TELEPHONE LIST

CONTRACT NO. A795

CONTRACTOR: UP SYSTEMS

<u>ORGANIZATION</u>	<u>POSITION</u>	<u>RESPONSIBLE INDIVIDUAL</u>	<u>TELEPHONE</u>
PDCD	- RESIDENT ENGINEER	GUIDO EYZAGUIRRE	O - (213) 489-6945 R - (805) 751-9152
SCRTD	- PROJECT ENGINEER	JAMES LOO	O - (213) 972-3835

C = CELLULAR
O = OFFICE
R = RESIDENCE
P = PAGER

LOS ANGELES DEPARTMENT OF TRANSPORTATION

Weekdays, 7:00 a.m. to 5:00 p.m. (213) 485-2610

Off Hours, Saturday, Sunday, Holidays:

Mr. Paul Ono (213) 532-2495
Mr. James Okazaki (818) 458-8826

DASH (Operator-Greyhound)

Mon. - Fri. 4:30 a.m. - 8:30 p.m. (213) 629-8533
Saturday 7:30 a.m. - 8:30 p.m. (213) 629-8533
Emergency And No One Available (800) 874-8885

COMMUTER EXPRESS (Operator-Laidlaw)

Mon. - Fri. 4:00 a.m. - 8:00 p.m. (818) 787-0140
Saturday 5:00 a.m. - 11:00 p.m. (213) 750-6577
Sunday 6:00 a.m. - 11:00 a.m. (213) 750-6577