

**SOUTHERN CALIFORNIA
RAPID TRANSIT DISTRICT**

**ORGANIZATION
CHARTS**

FEBRUARY 1990



SOUTHERN CALIFORNIA RAPID TRANSIT DISTRICT

ORGANIZATION CHARTS

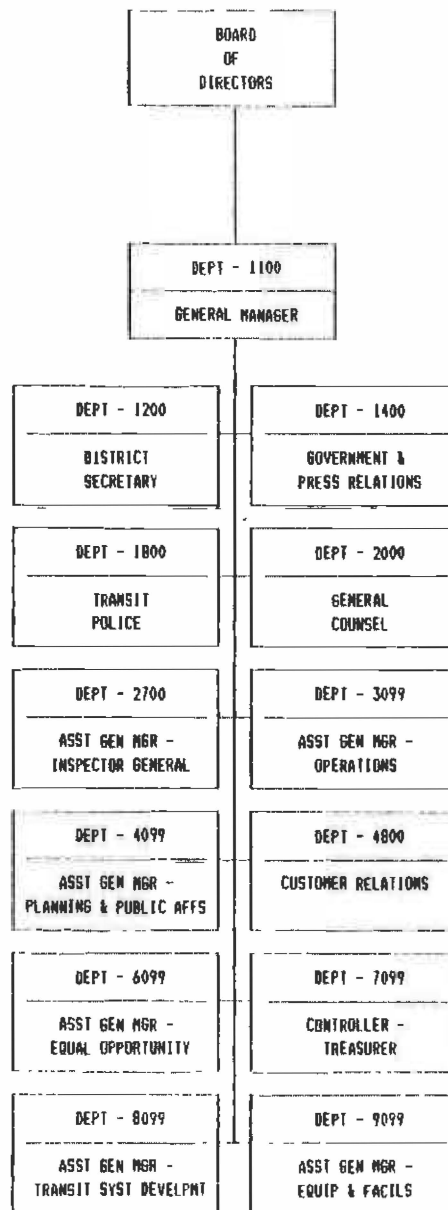
TABLE OF CONTENTS

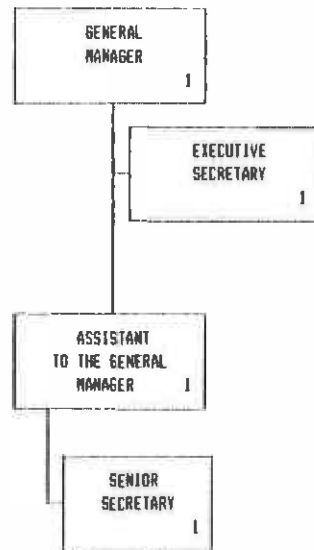
1000	BOARD OF DIRECTORS/OVERALL DISTRICT	1
1100	GENERAL MANAGER	2
1200	DISTRICT SECRETARY	3
1400	GOVERNMENT & PRESS RELATIONS	4
1800	TRANSIT POLICE	5
2200	LEGAL	6
2300	EMPLOYEE RELATIONS	7
2700	AGM - INSPECTOR GENERAL	8
3099	AGM - OPERATIONS	9
3100	RAIL ACTIVATION	10
3299	TRANSPORTATION GENERAL	11
3250	TRANSPORTATION OPERATING DIVISIONS	12
3296	OPERATIONS CONTROL SERVICES	13
3297	CENTRAL INSTRUCTION	14
3900	SCHEDULING & OPERATIONS PLANNING	15
4099	AGM - PLANNING & PUBLIC AFFAIRS	16
4100	LOCAL GOVERNMENT & COMMUNITY AFFAIRS	17
4200	PLANNING	18-19
4400	MARKETING & COMMUNICATIONS	20
4800	CUSTOMER RELATIONS	21
6099	EQUAL OPPORTUNITY	22
	6100 - EQUAL EMPLOYMENT OPPORTUNITY	
	6200 - CONTRACT COMPLIANCE	
	6300 - EMPLOYEE EDUCATION, TRAINING & DEVELOPMENT	
	6400 - DBE/WBE	
7099	CONTROLLER-TREASURER	23
7100	ACCOUNTING & FISCAL	24-25
7200	DATA PROCESSING	26-31
7500	PERSONNEL	32
7700	MANAGEMENT & BUDGET	33
7900	RISK MANAGEMENT	34

TABLE OF CONTENTS (CONTINUED)

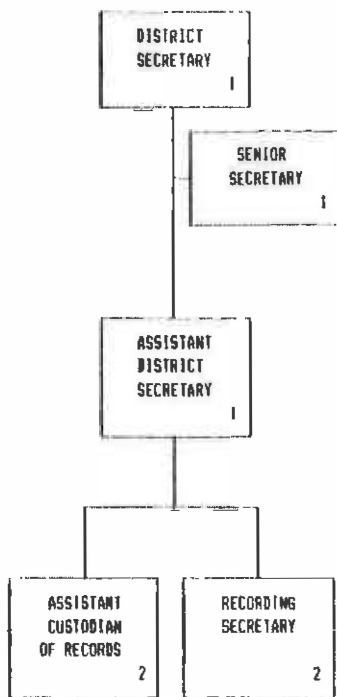
8099	AGM - TRANSIT SYSTEMS DEVELOPMENT	35
8100	TRANSIT SYSTEMS DEVELOPMENT	
	SUPPORT SERVICES	36
	SYSTEMS DESIGN & ANALYSIS	37
	RAIL FACILITIES ENGINEERING	38
	PROGRAM MANAGEMENT	39-40
	CONSTRUCTION MANAGEMENT	41
	REAL ESTATE & DEVELOPMENT	42
	SYSTEM & CONSTRUCTION SAFETY	43
9099	AGM - EQUIPMENT & FACILITIES	44
9200	BUS FACILITIES ENGINEERING	45
9300	EQUIPMENT MAINTENANCE	46-50
9400	CONTRACTS, PROCUREMENT & MATERIEL	51-55
9600	FACILITIES MAINTENANCE	56-60

MTA LIBRARY

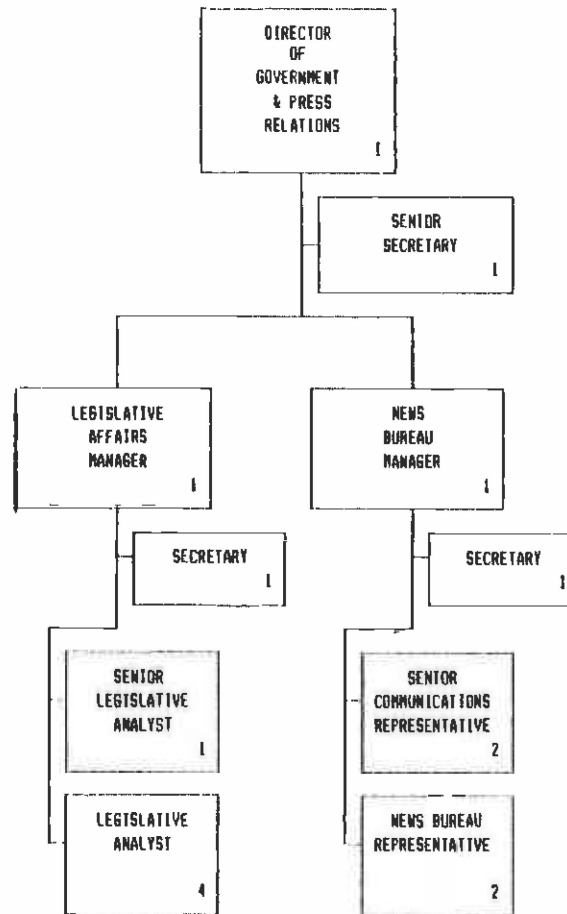


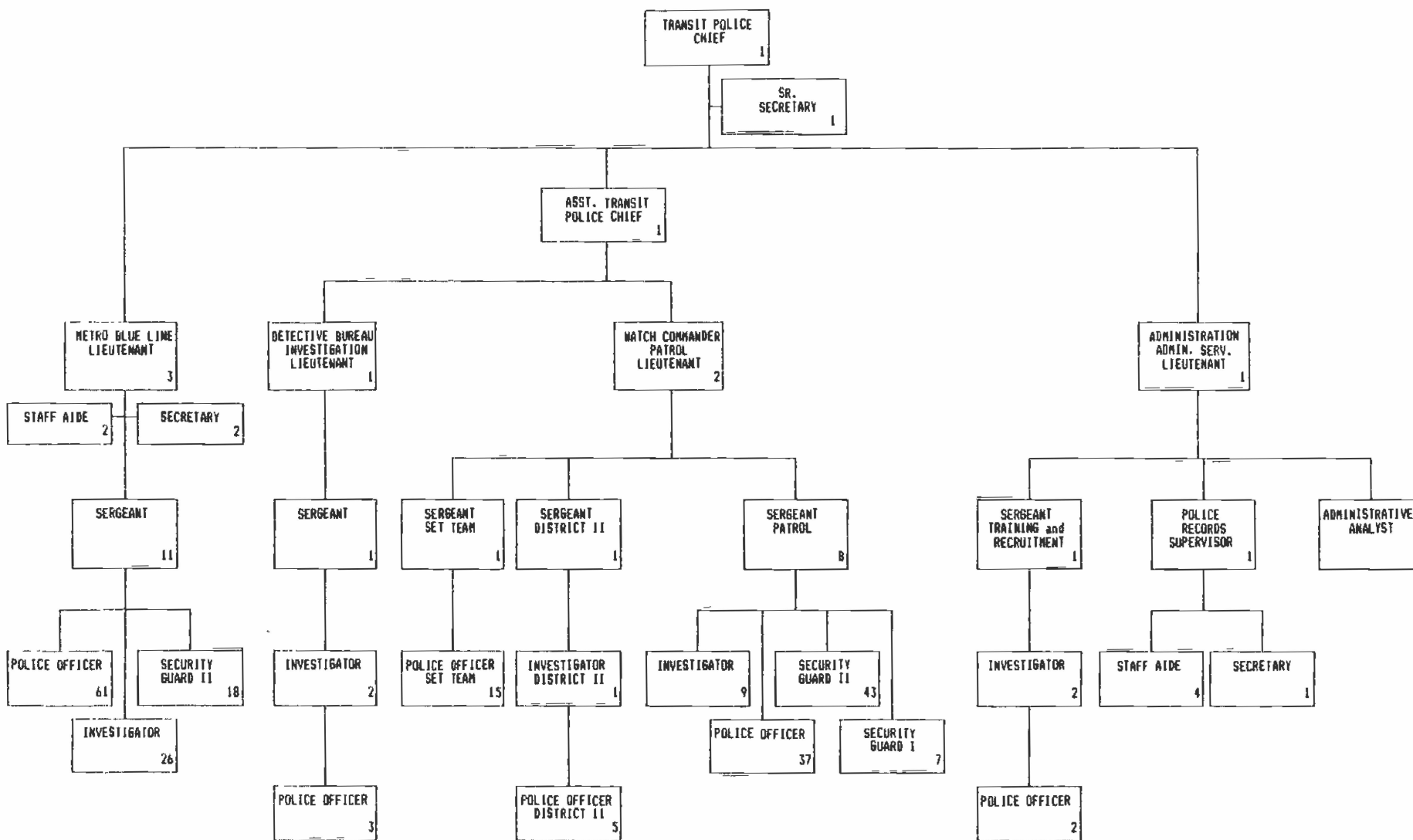


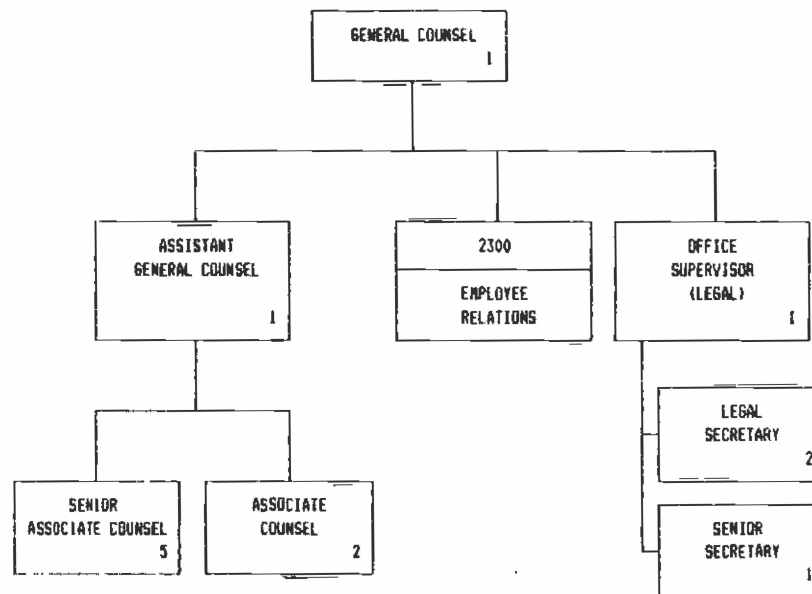
1200 - DISTRICT SECRETARY

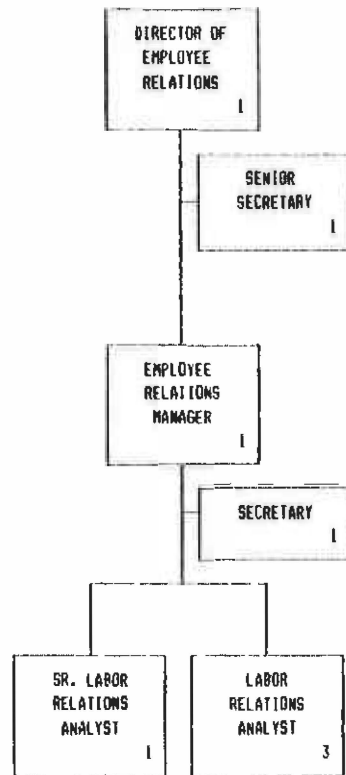


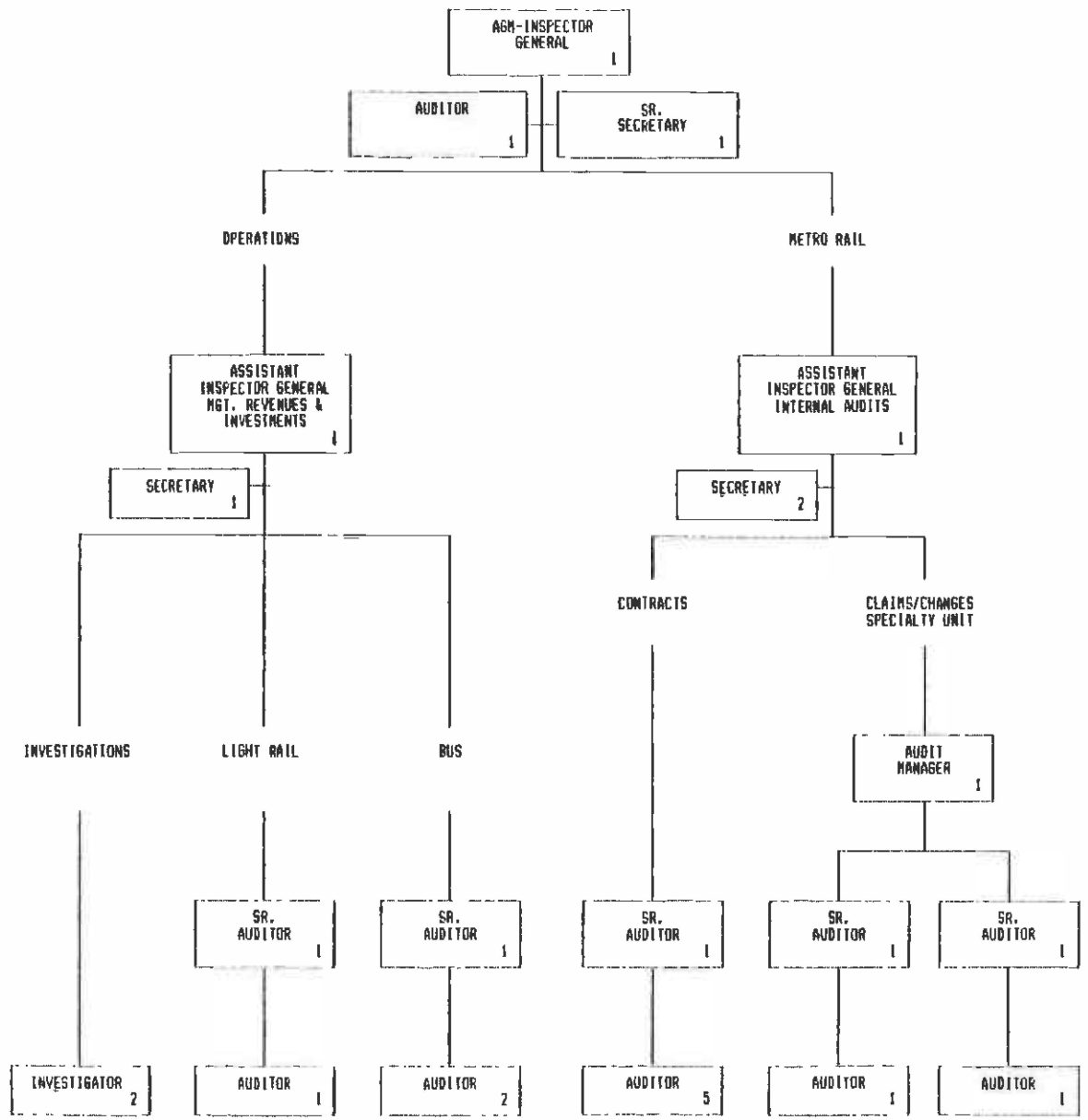
MTA LIBRARY

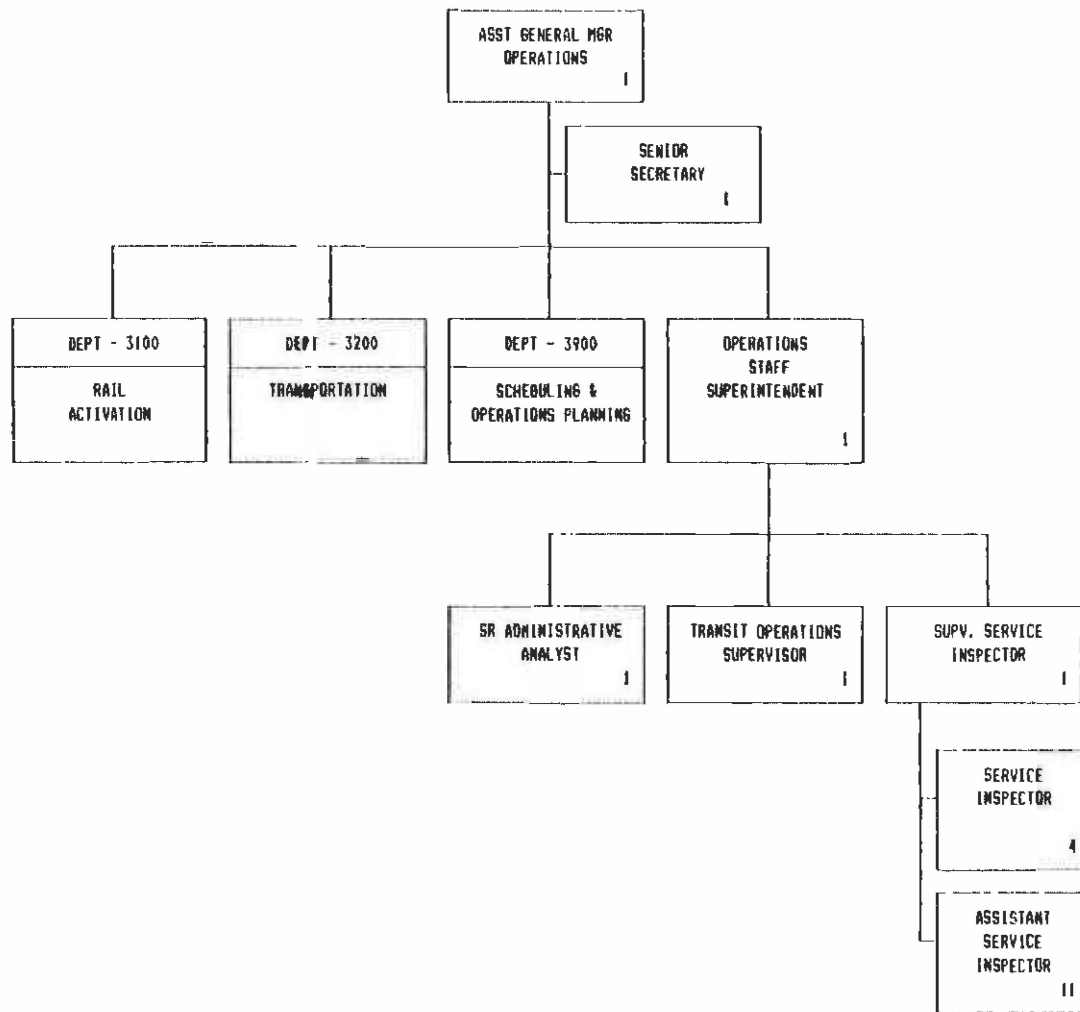


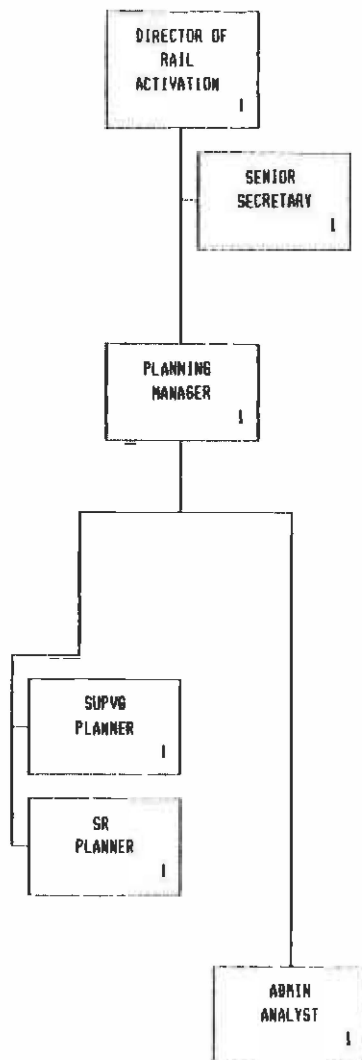


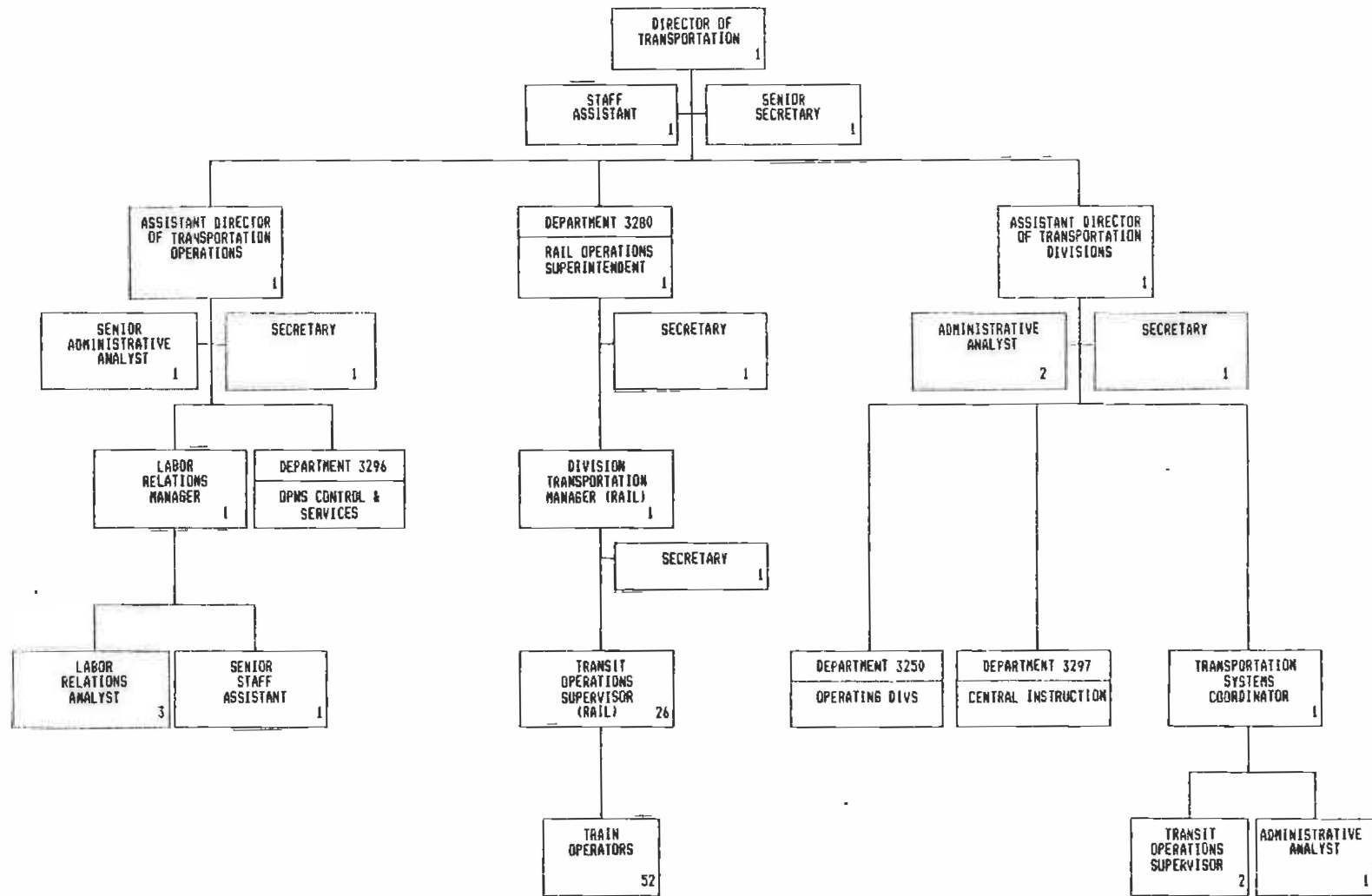


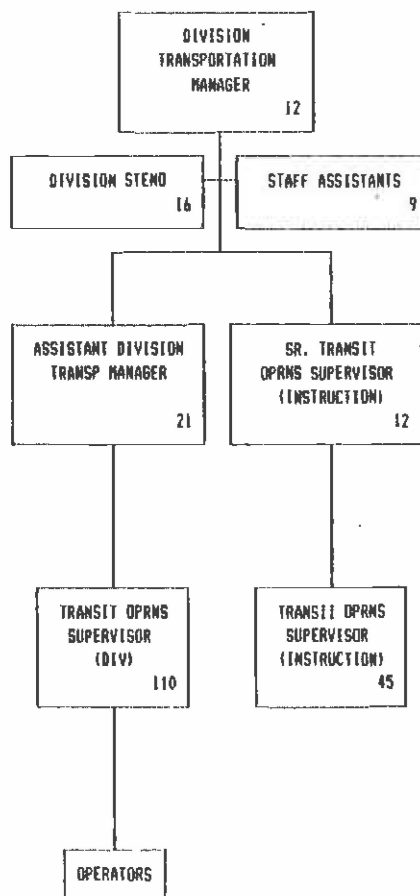




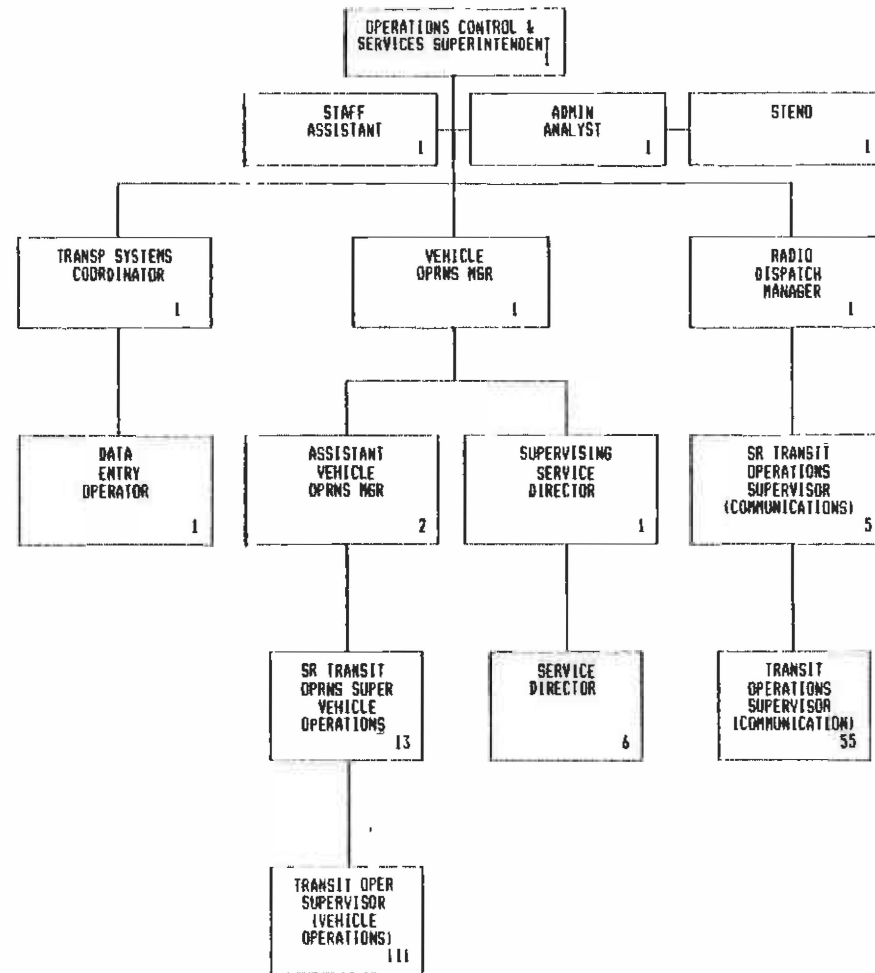


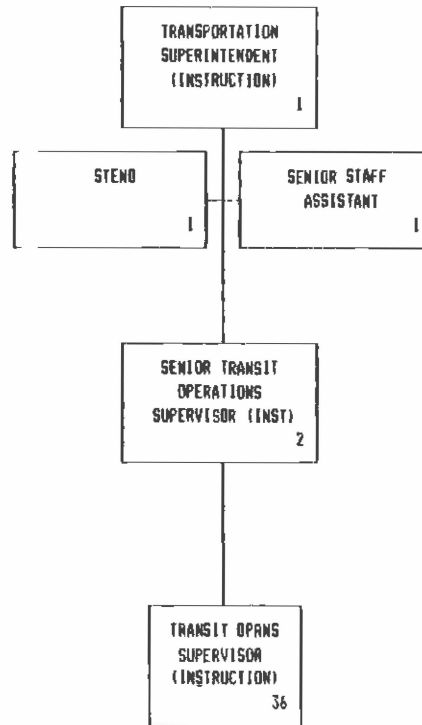




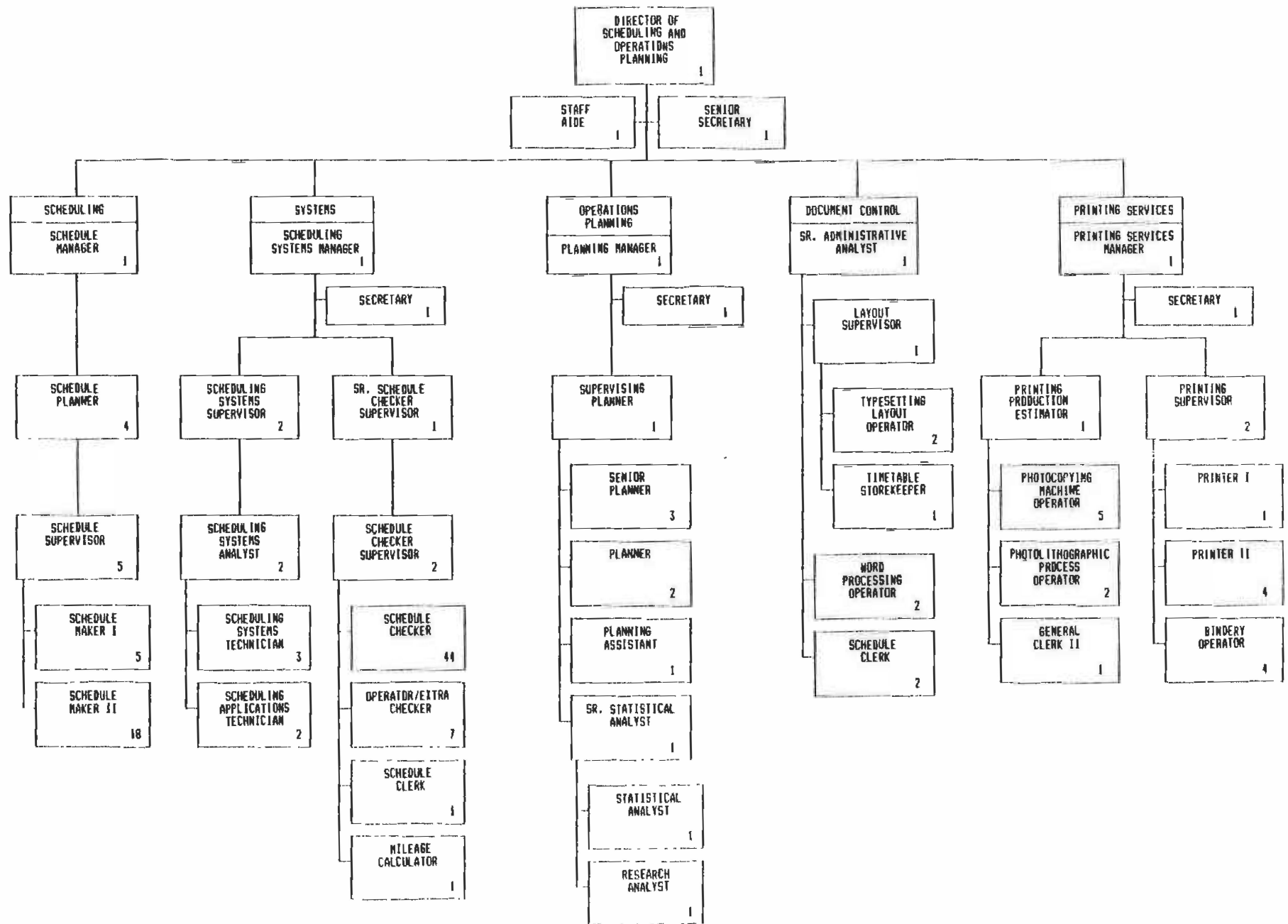


MTA LIBRARY

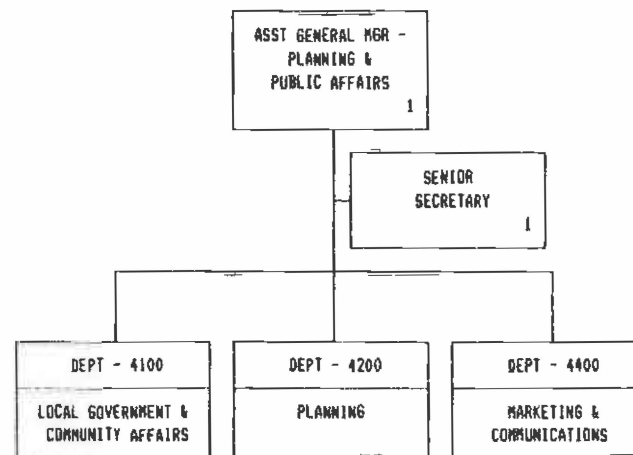




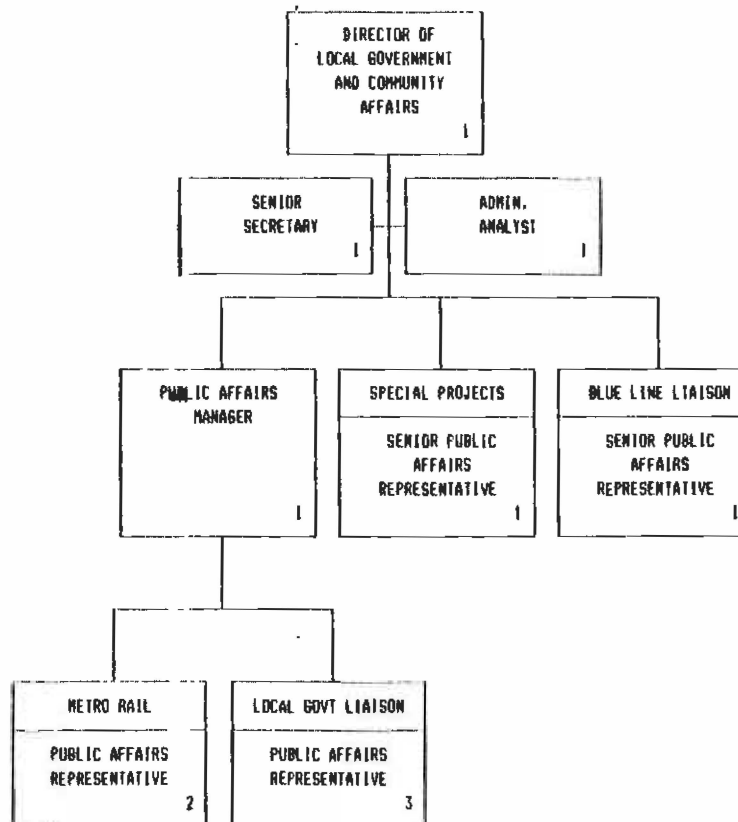
MTA LIBRARY

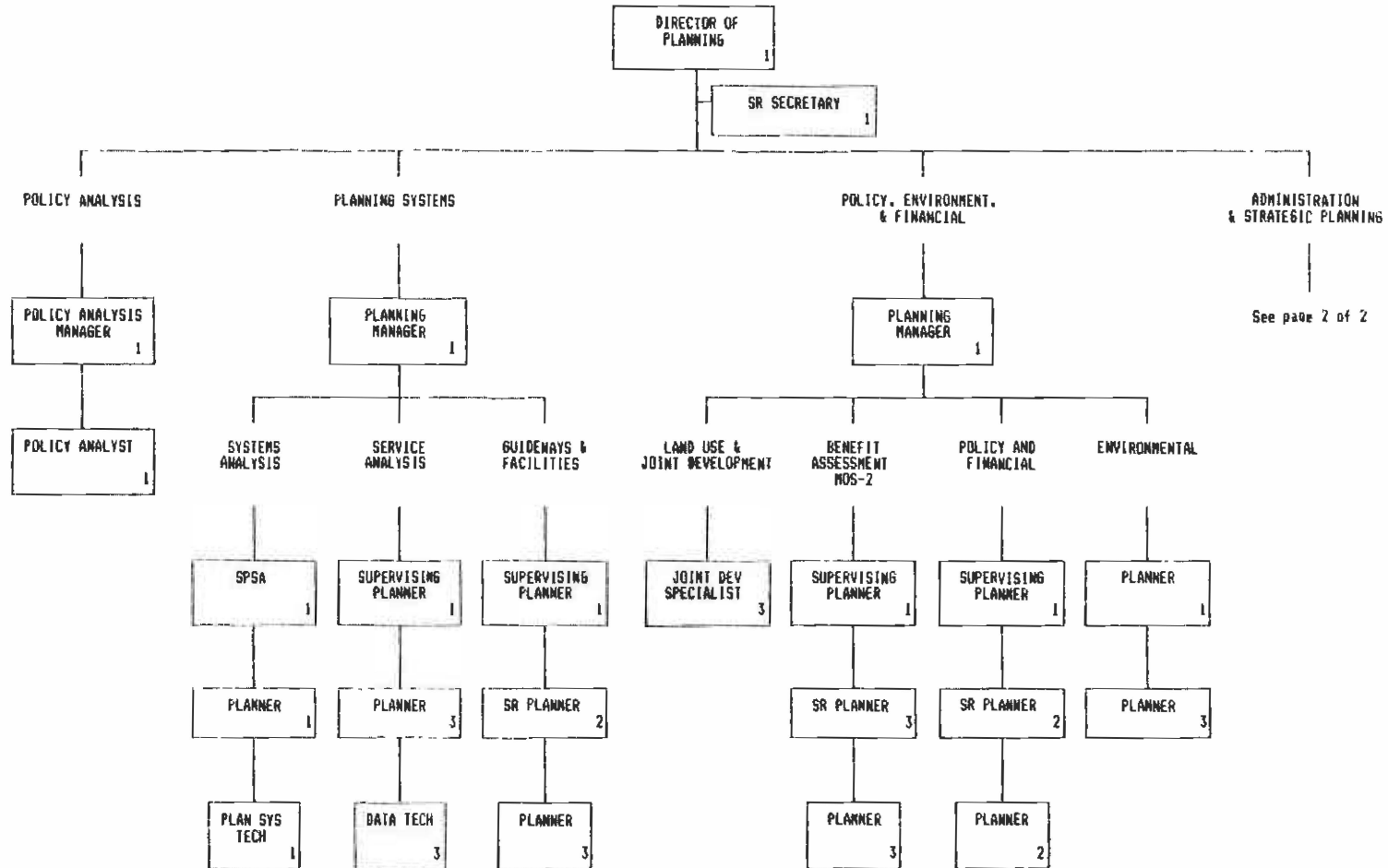


4099 - ASSISTANT GENERAL MANAGER -
PLANNING & PUBLIC AFFAIRS

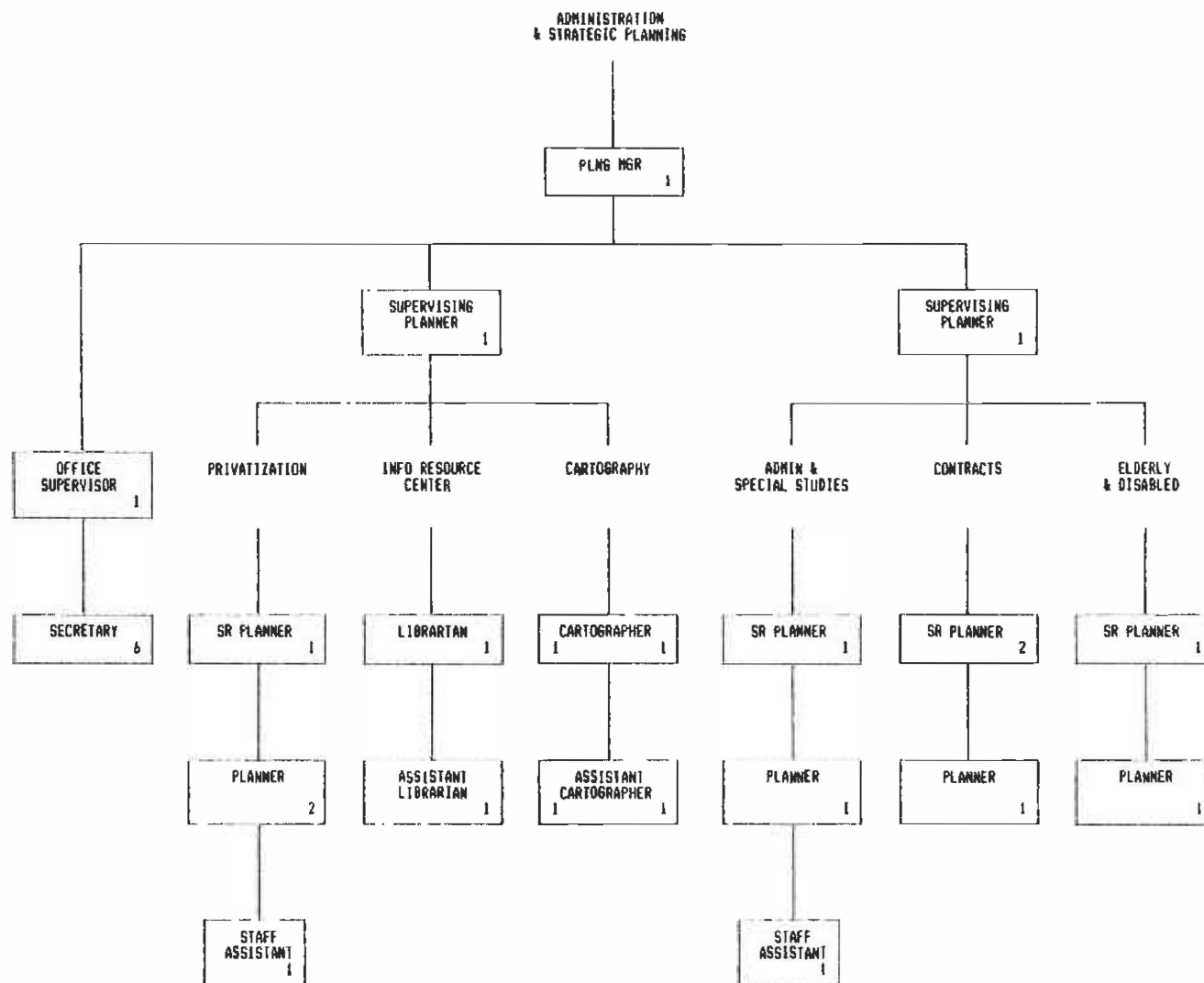


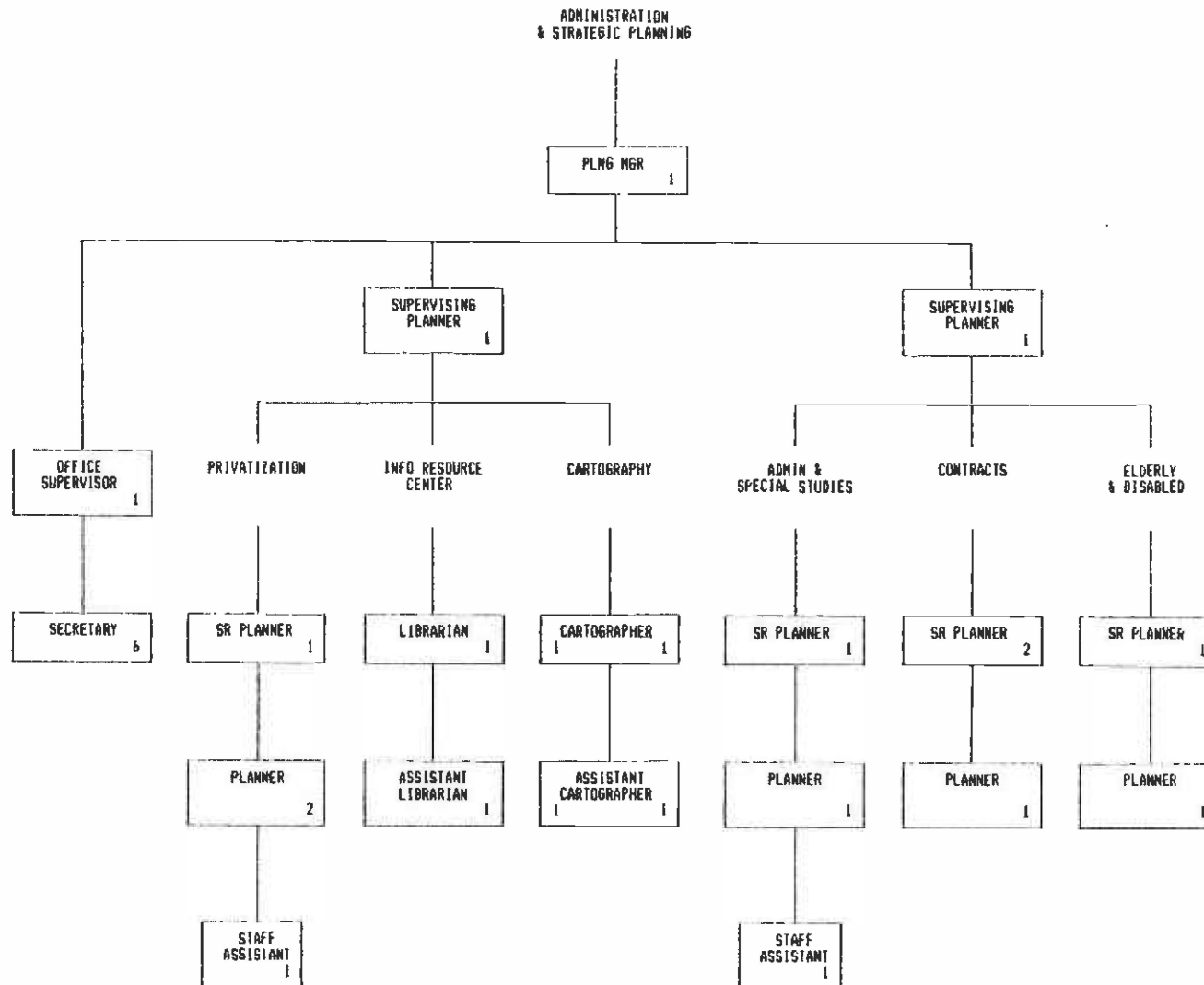
MTA LIBRARY



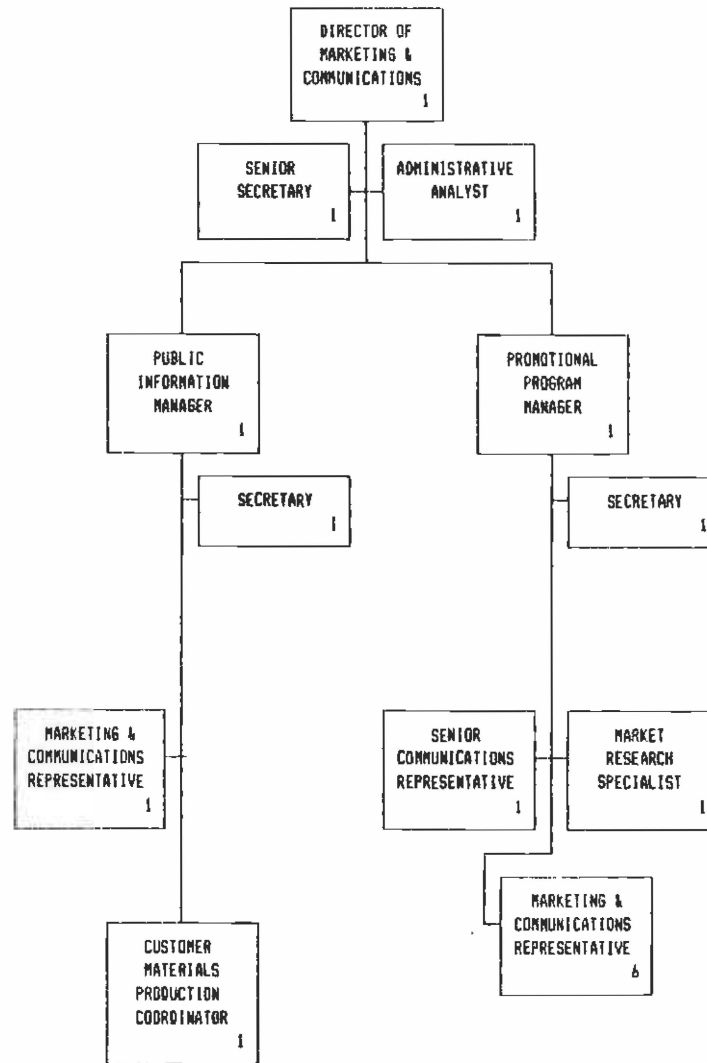


MTA LIBRARY

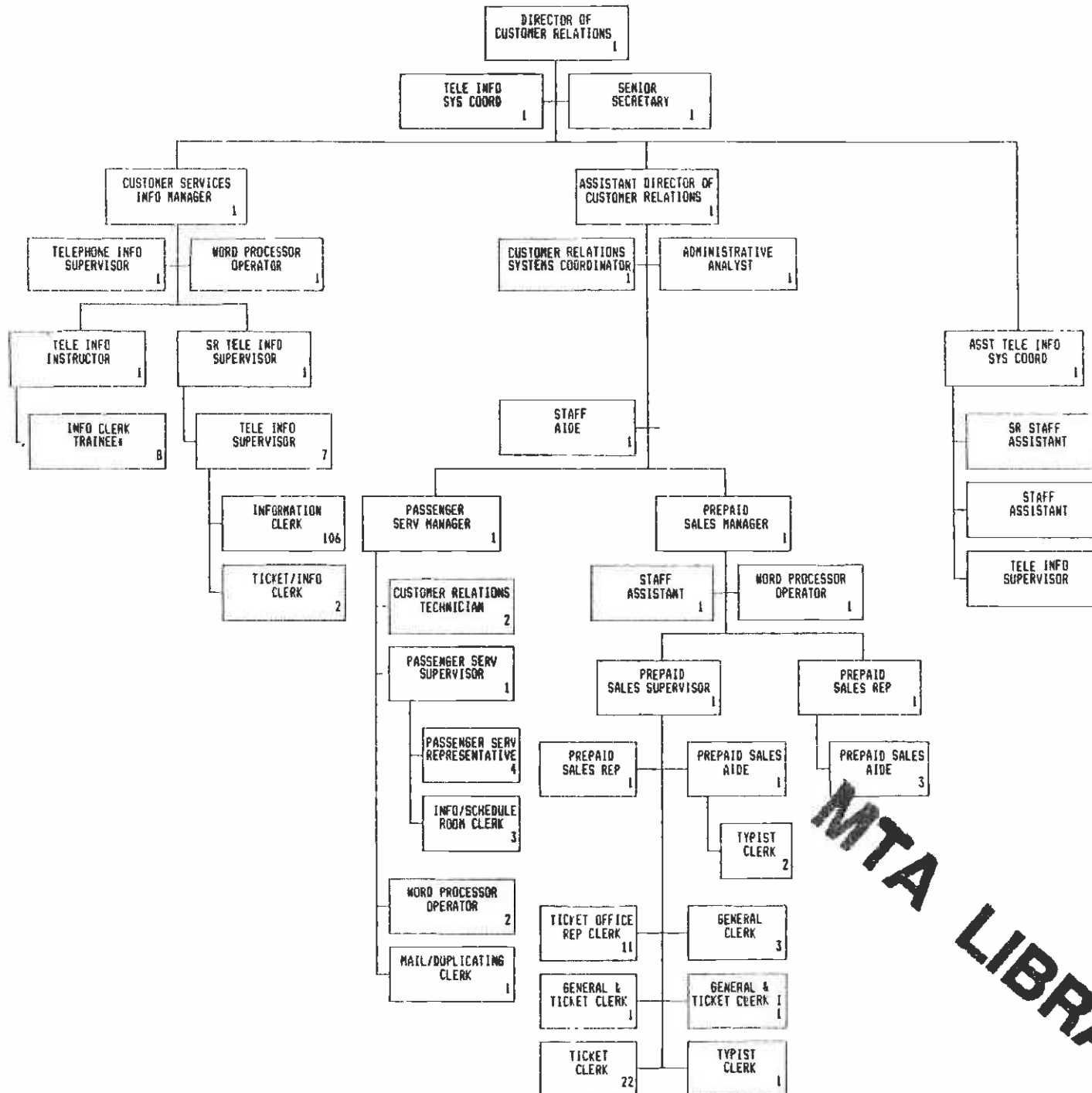




10
MTA LIBRARY

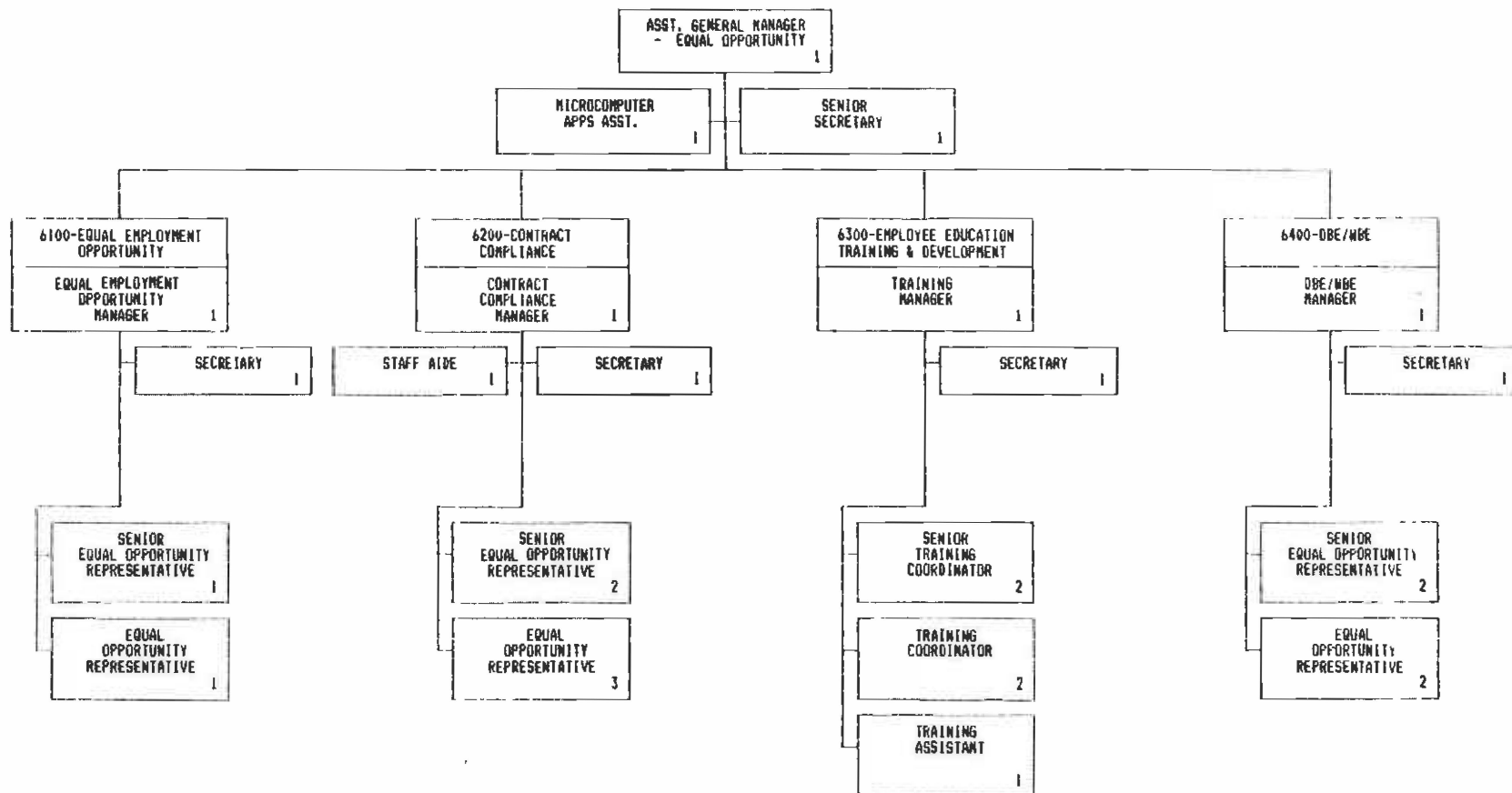


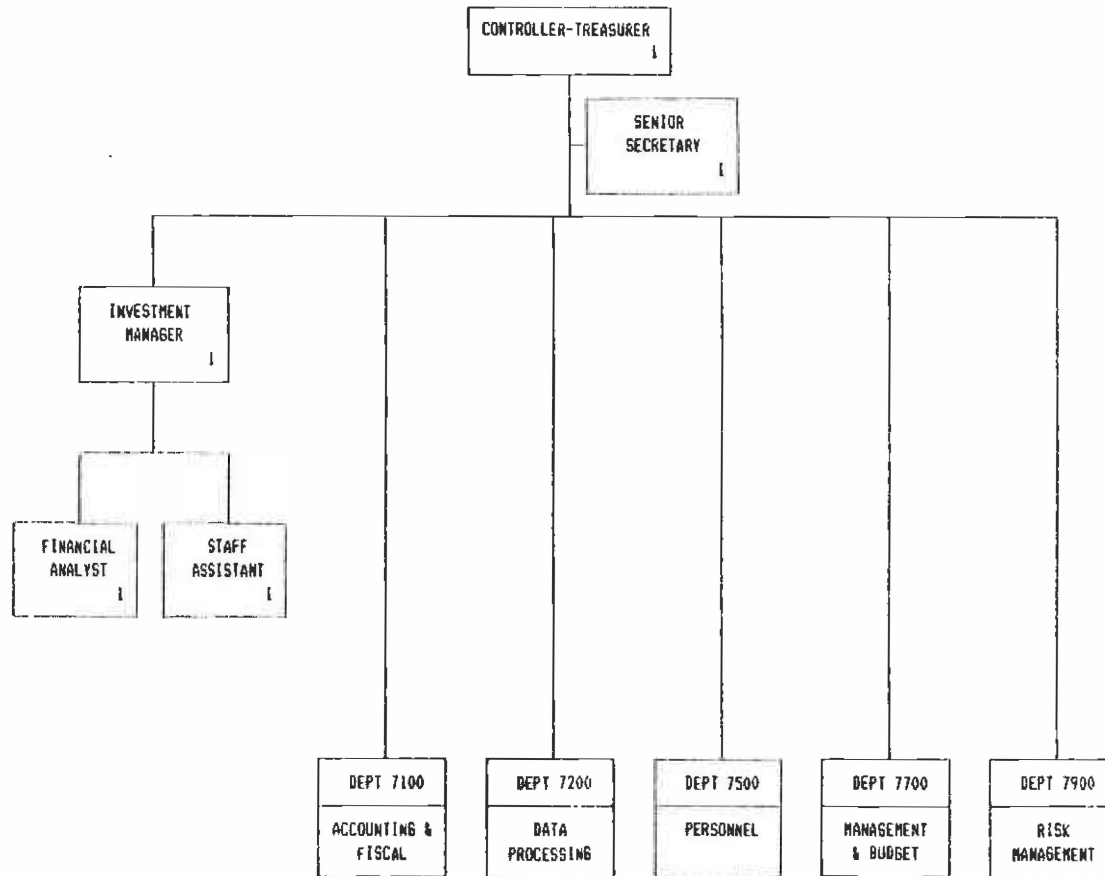
MTA LIBRARY

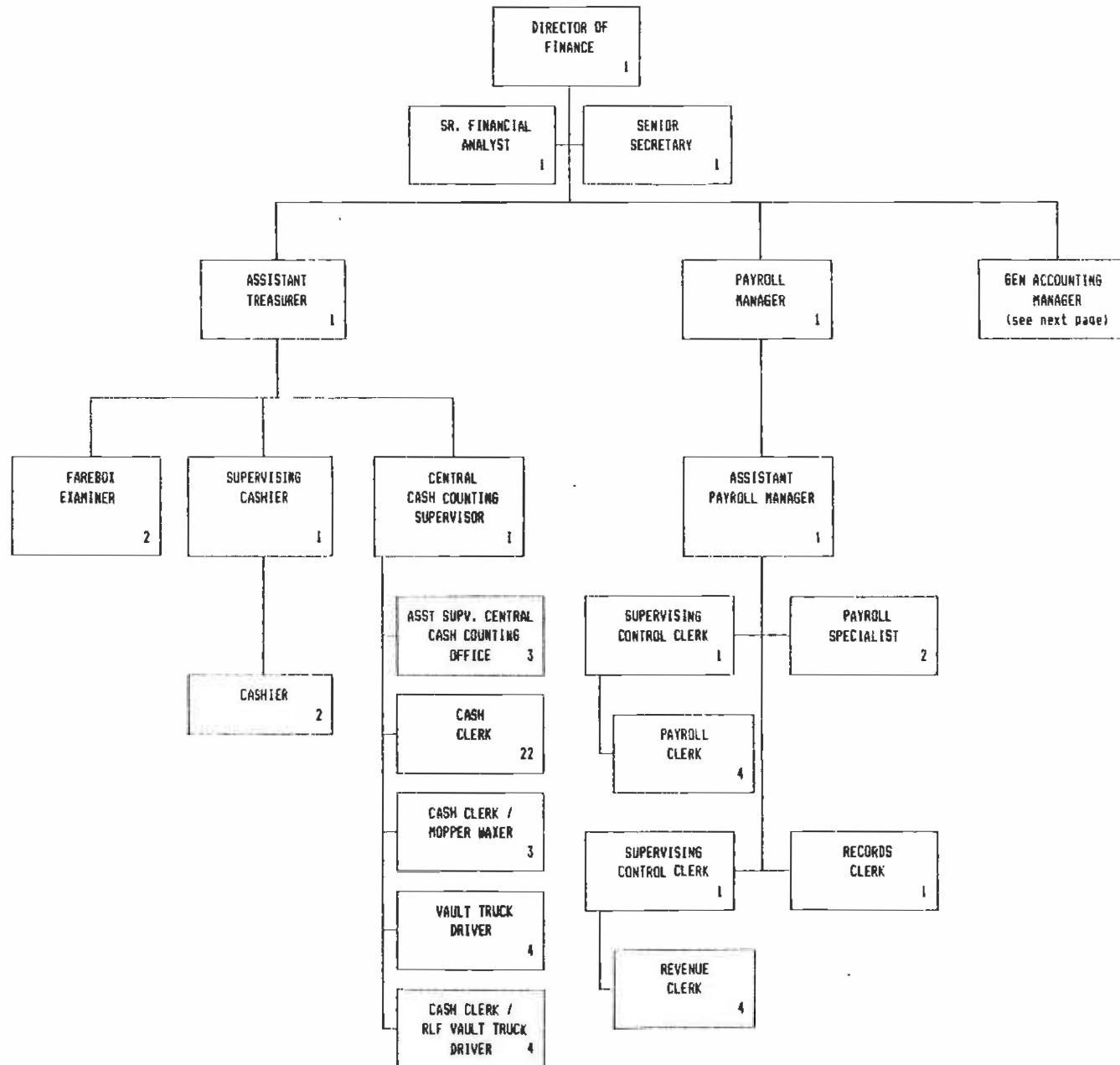


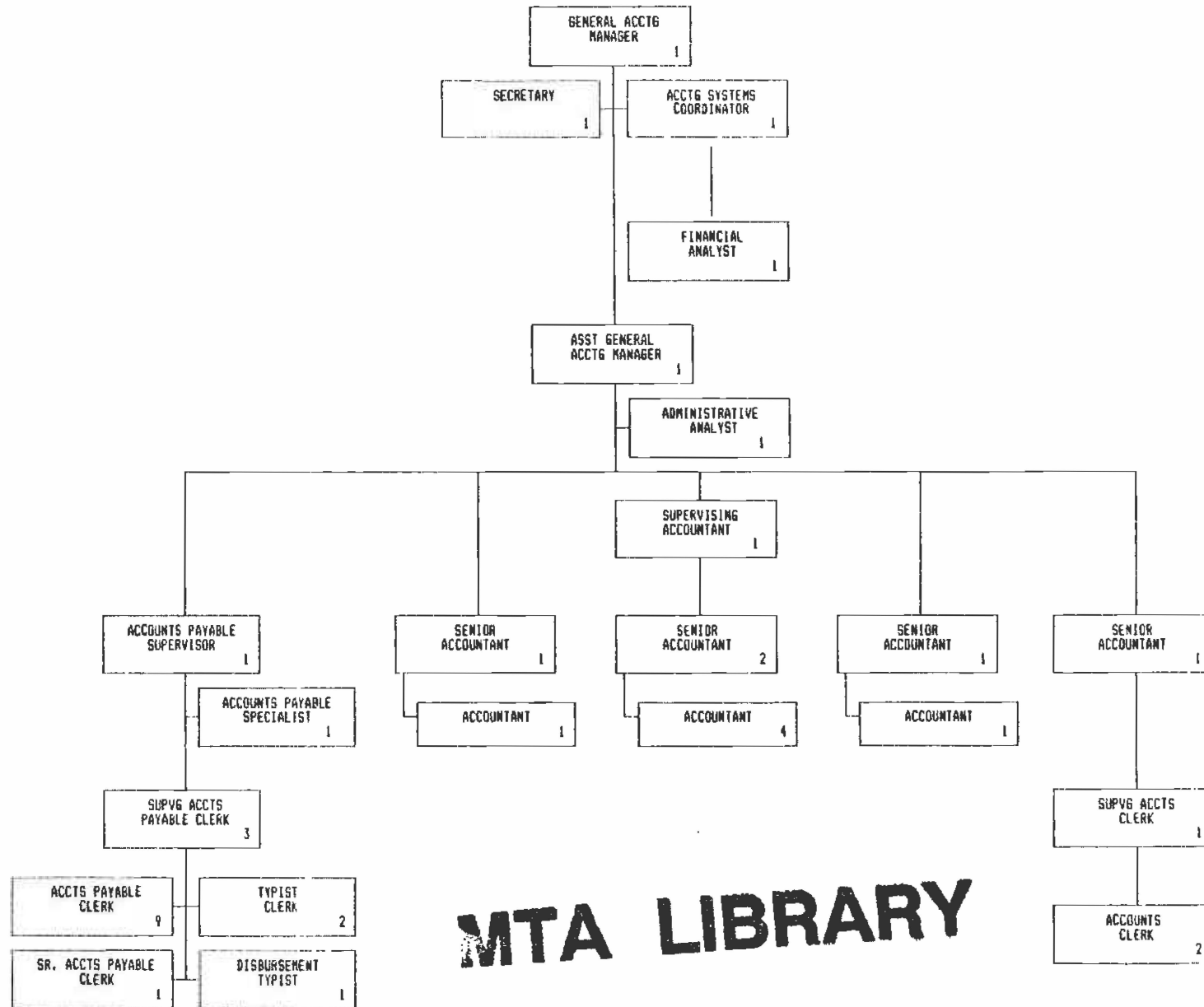
MTA LIBRARY

* This position is filled only during an initial training period as established with OMB.

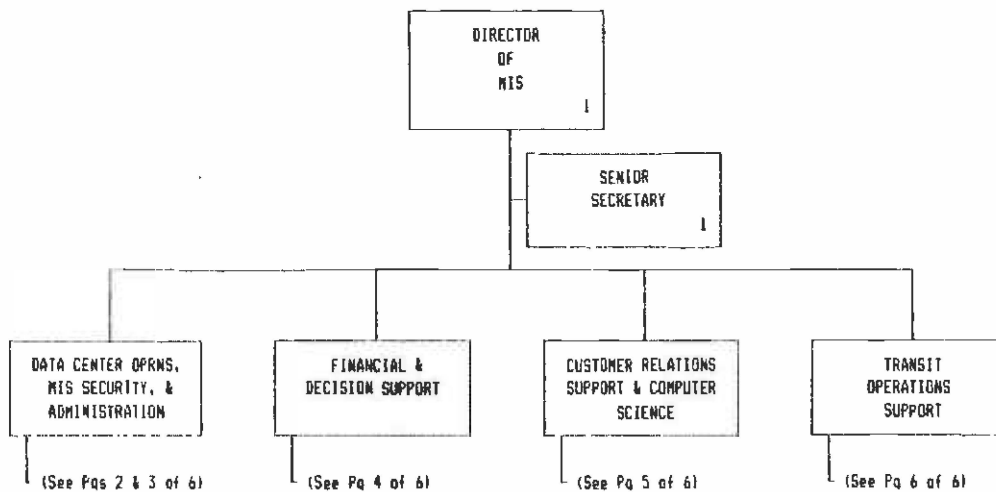








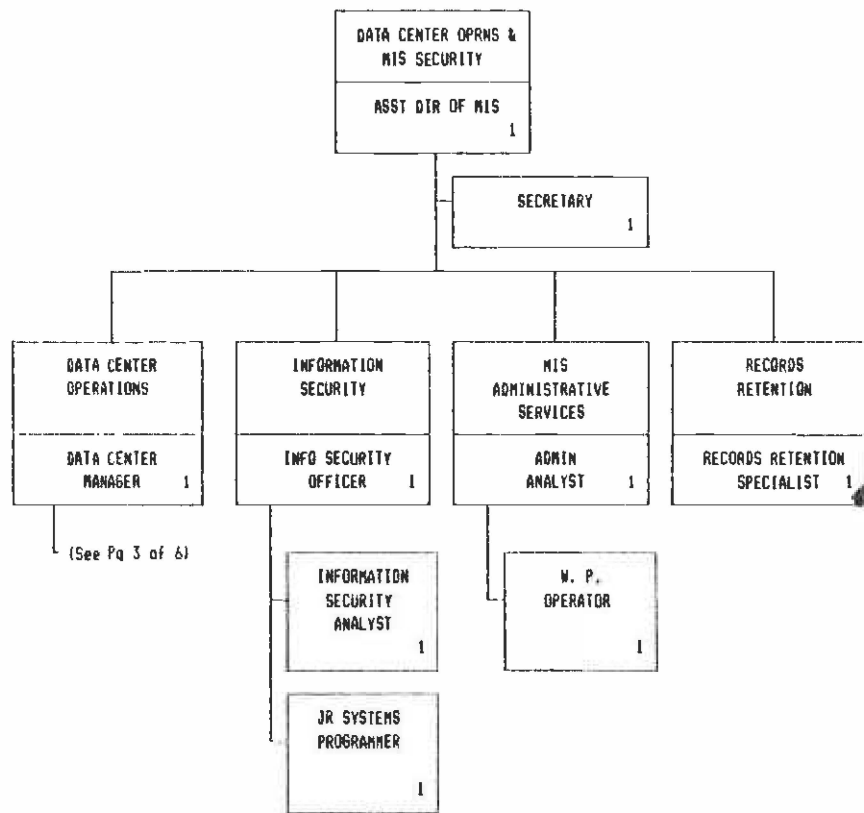
MTA LIBRARY



MTA LIBRARY

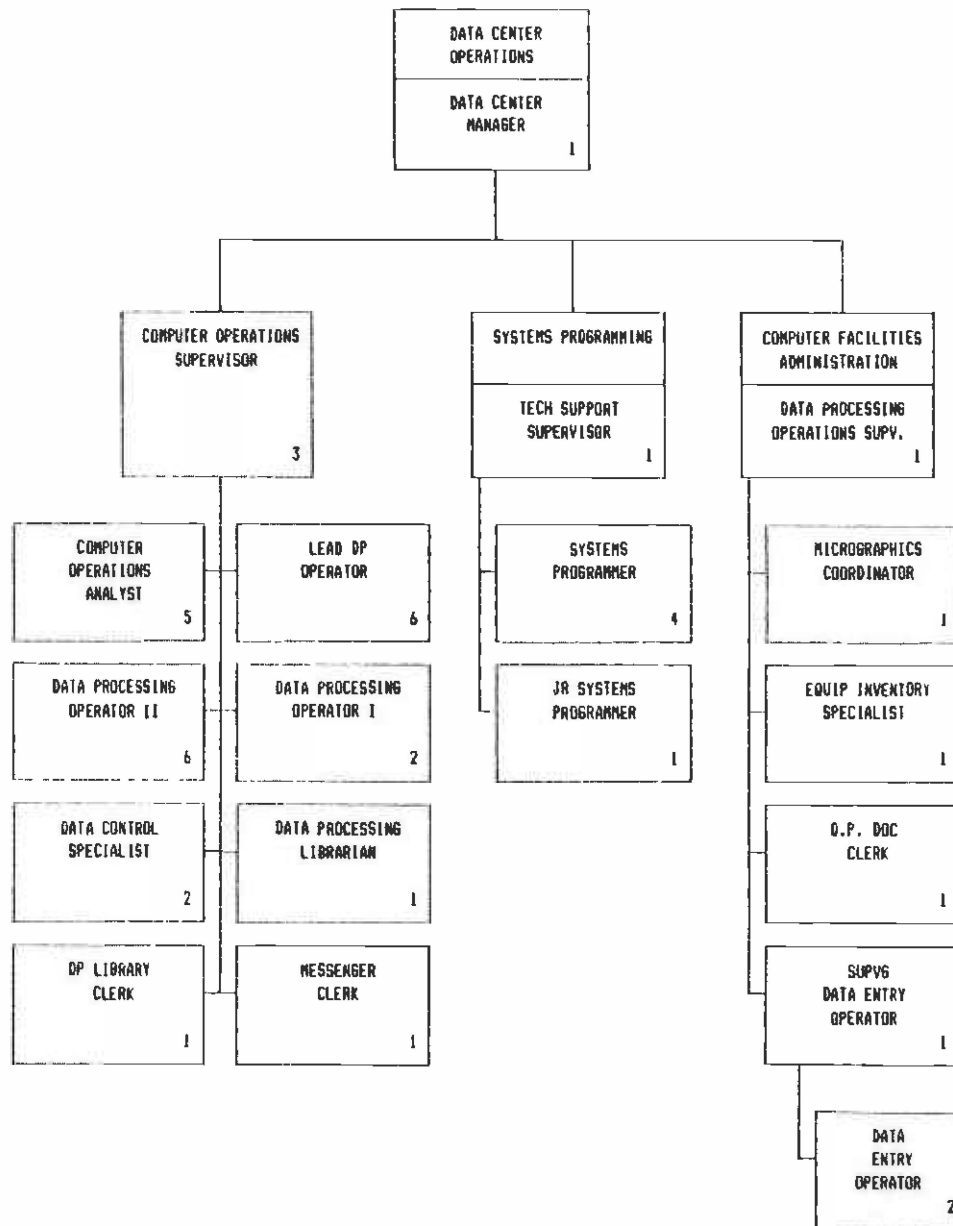
DATA CENTER OPERATIONS & MIS SECURITY
(FUNCTION 1)

7200 - MANAGEMENT INFORMATION SYSTEMS
Page 2 of 6



MTA LIBRARY

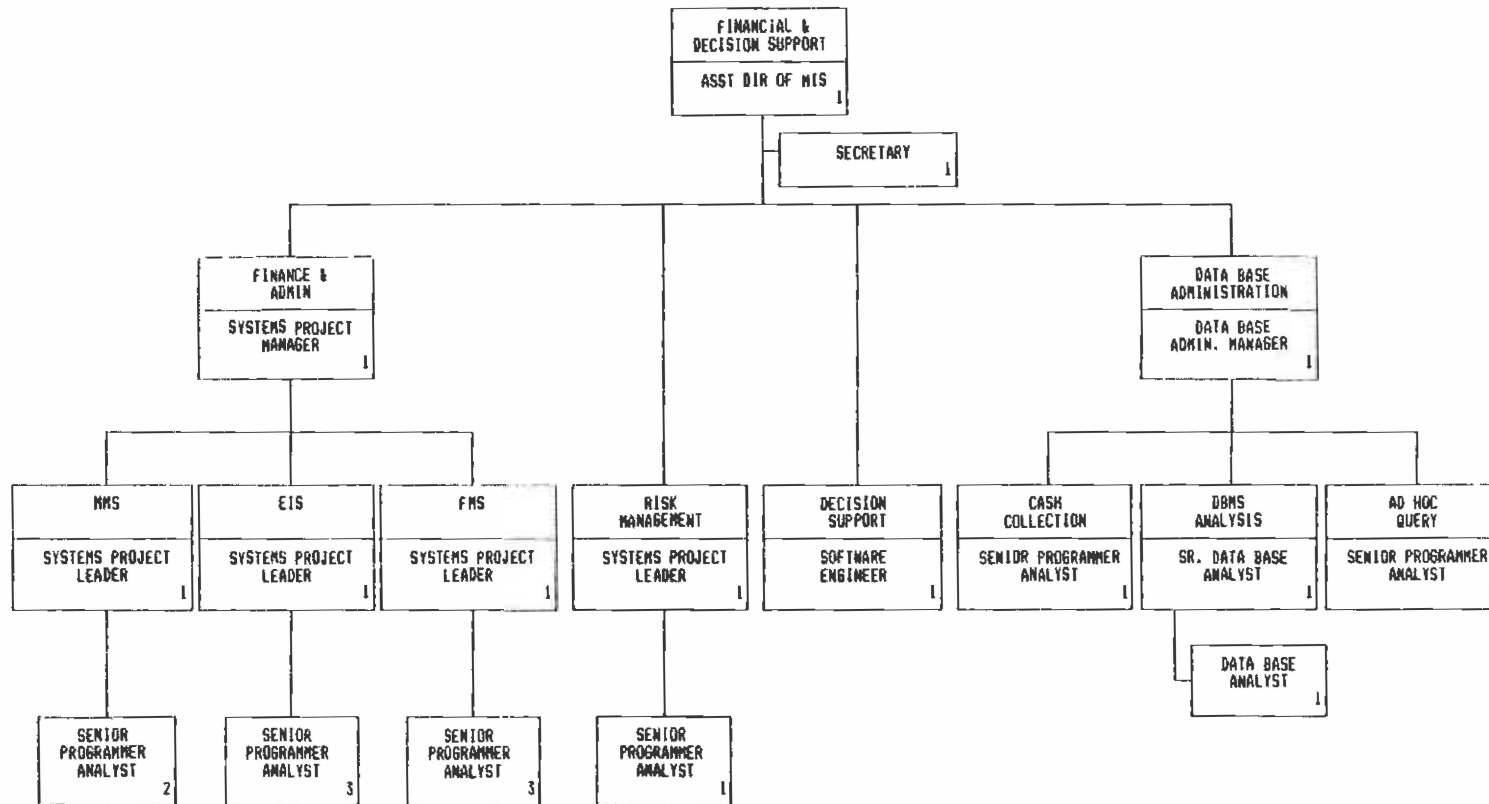
DATA CENTER OPERATIONS
(FUNCTION 1)



MTA LIBRARY

FINANCIAL & DECISION SUPPORT
(FUNCTION 2)

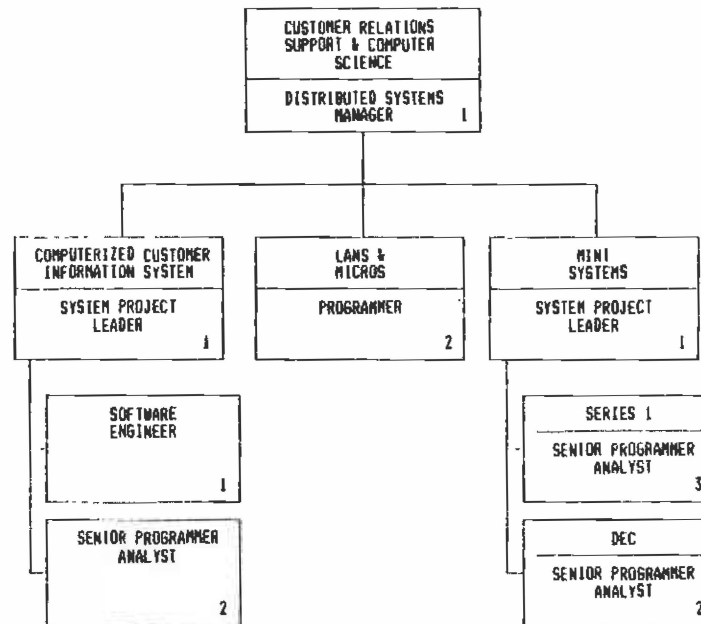
7200 - MANAGEMENT INFORMATION SYSTEMS
Page 4 of 6



MTA LIBRARY

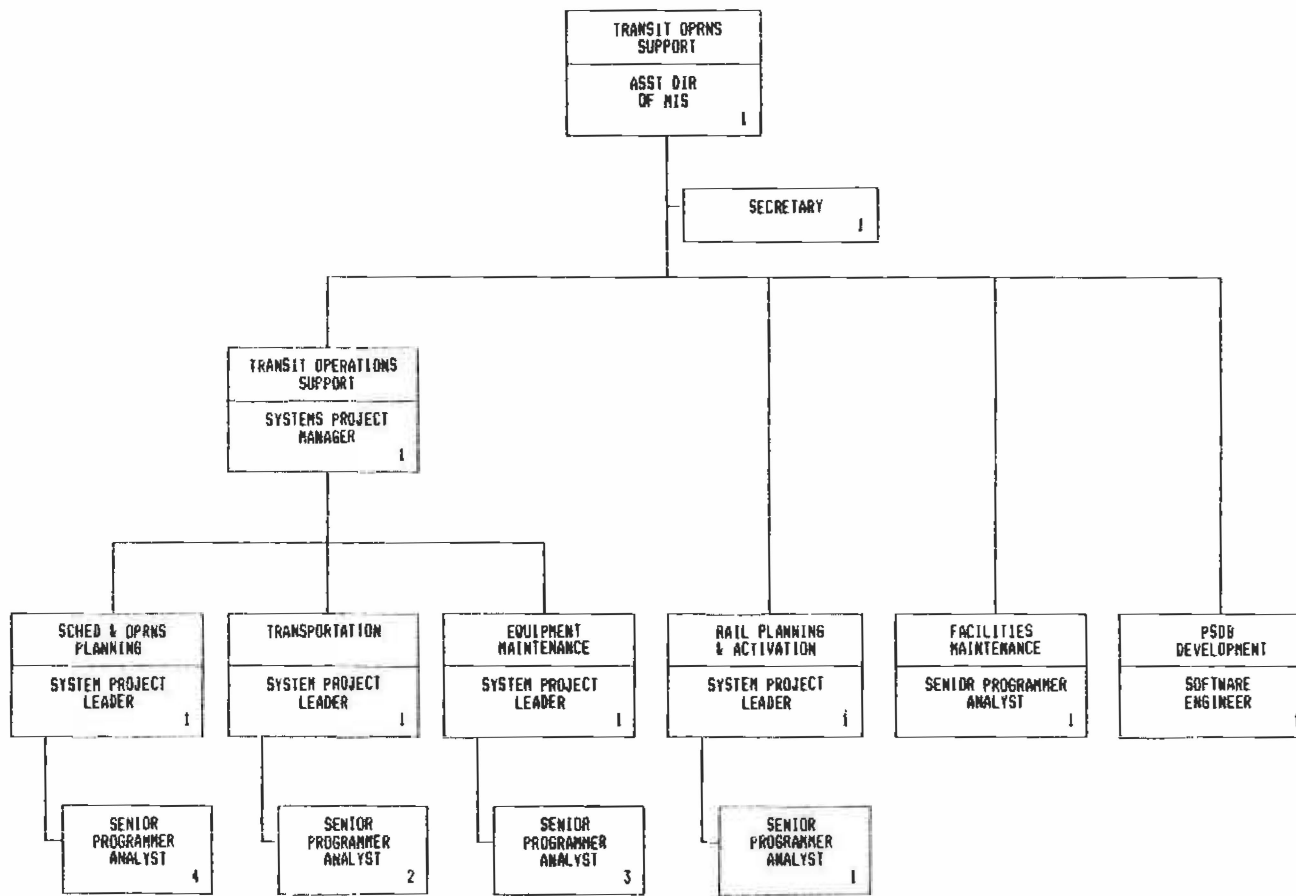
CUSTOMER RELATIONS SUPPORT
AND COMPUTER SCIENCE
(FUNCTION 3)

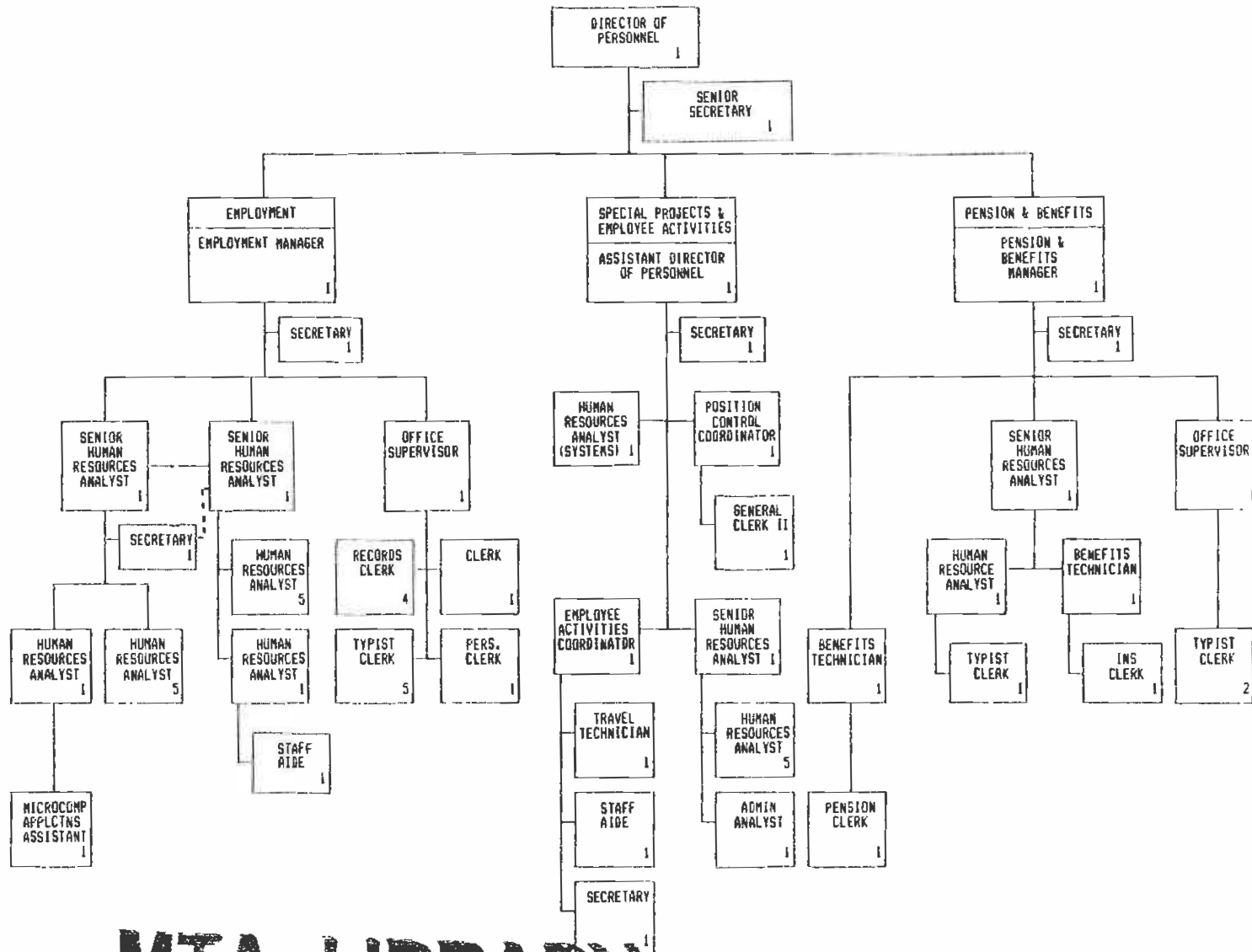
7200 - MANAGEMENT INFORMATION SYSTEMS
Page 5 of 6



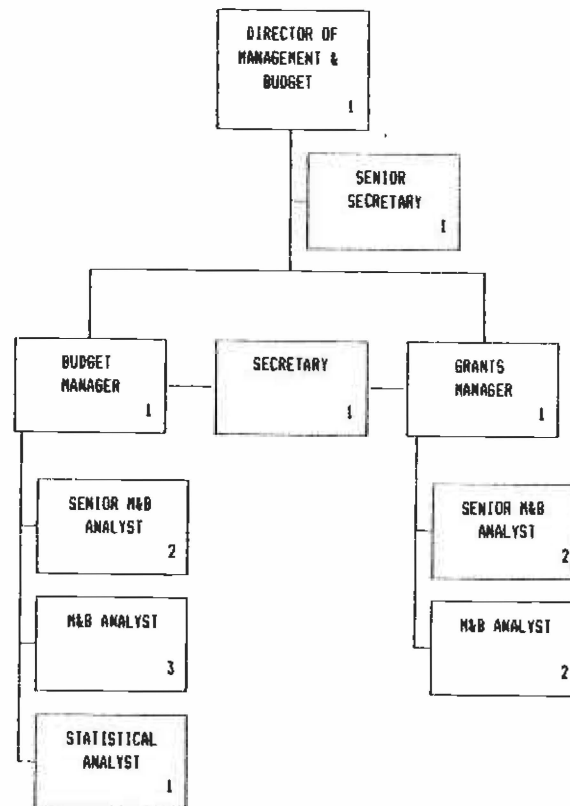
TRANSIT OPERATIONS SUPPORT
(FUNCTION 4)

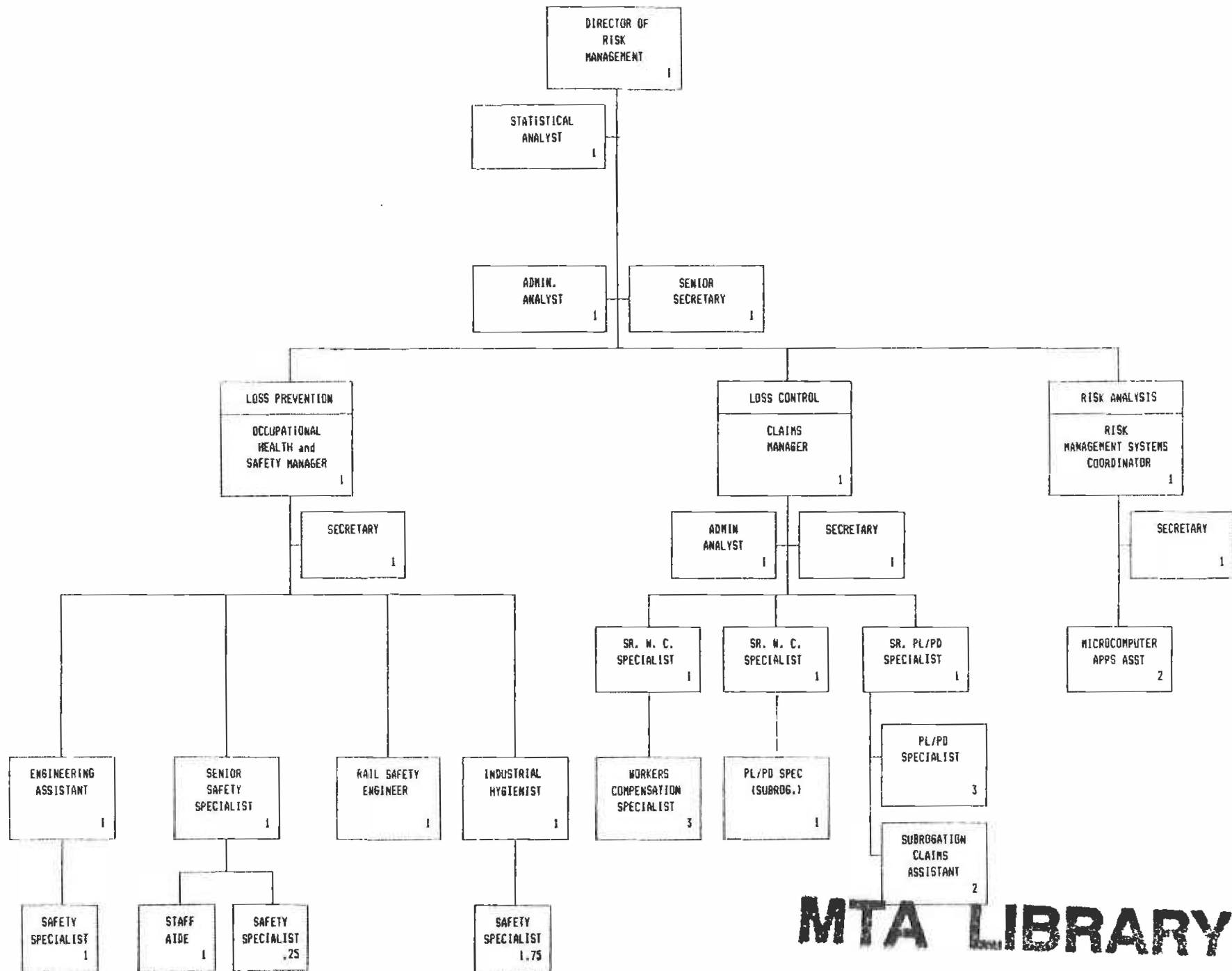
7200 - MANAGEMENT INFORMATION SYSTEMS
Page 6 of 6



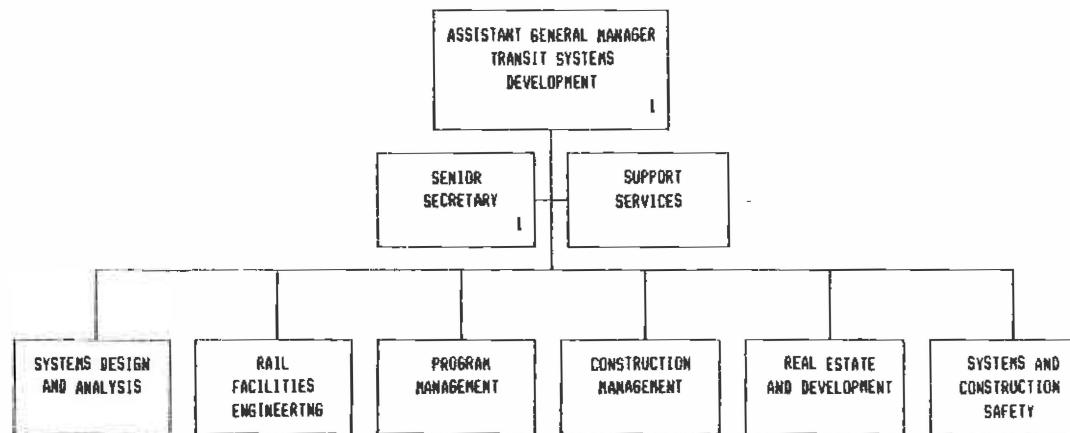


MTA LIBRA

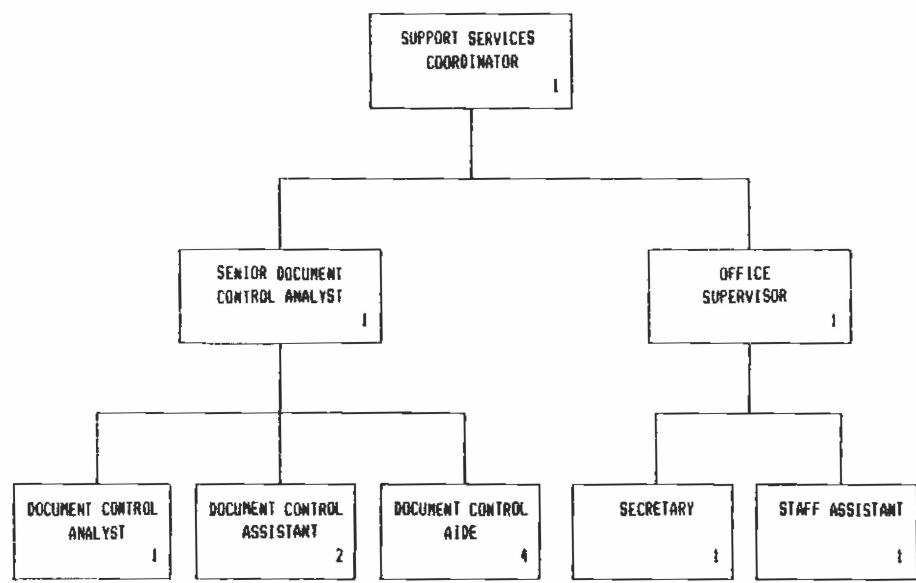




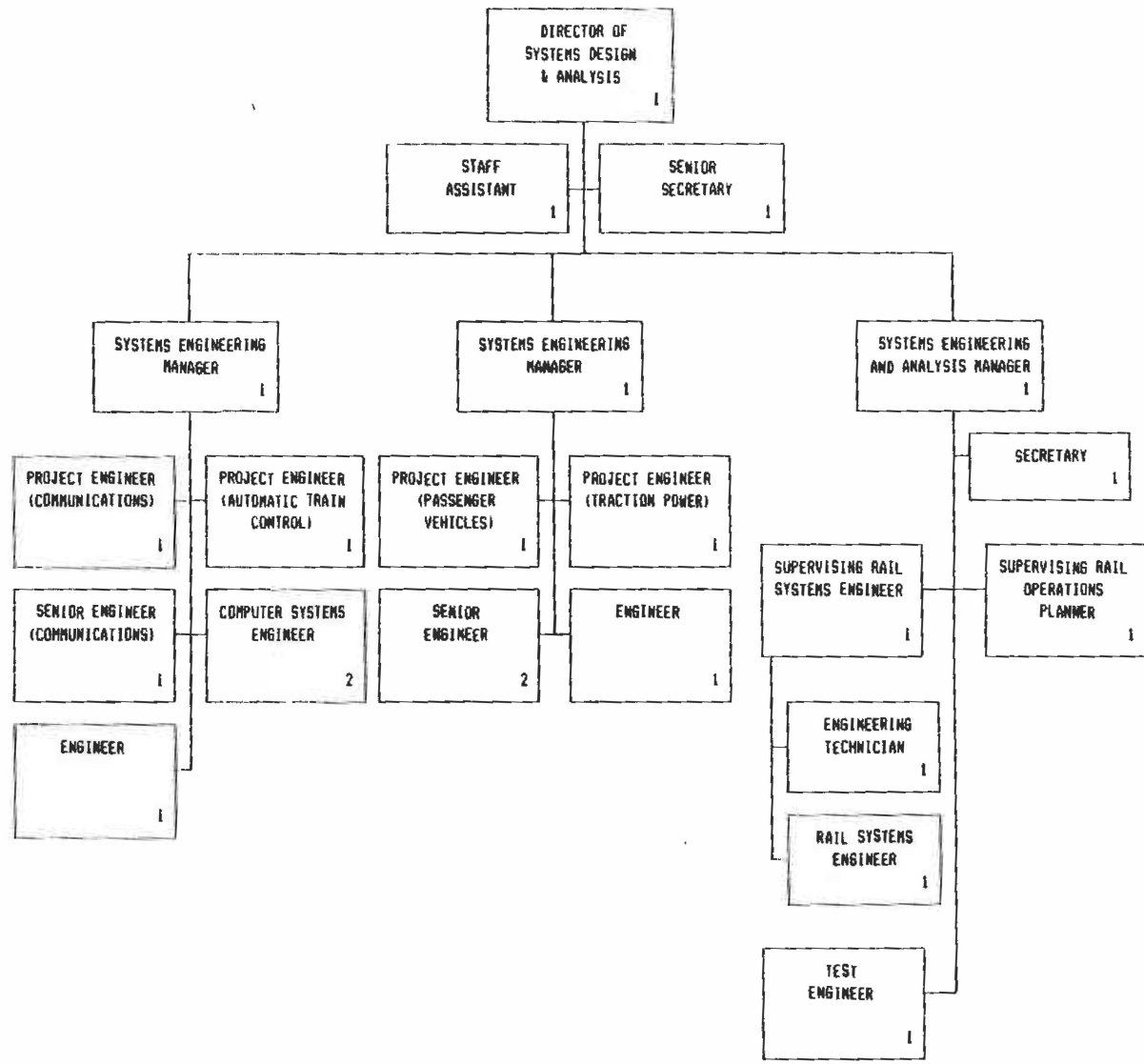
MTA LIBRARY



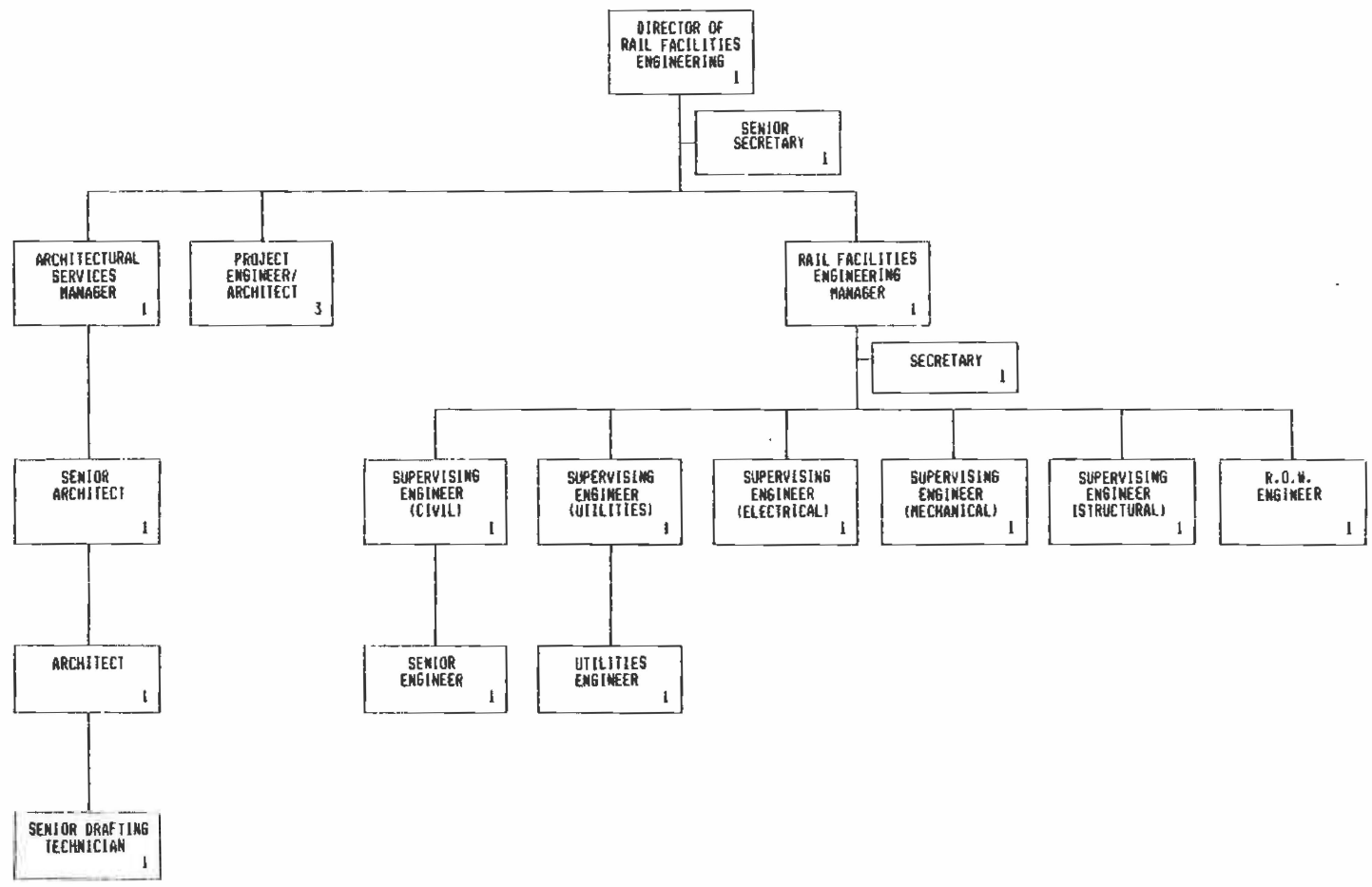
MTA LIBRARY



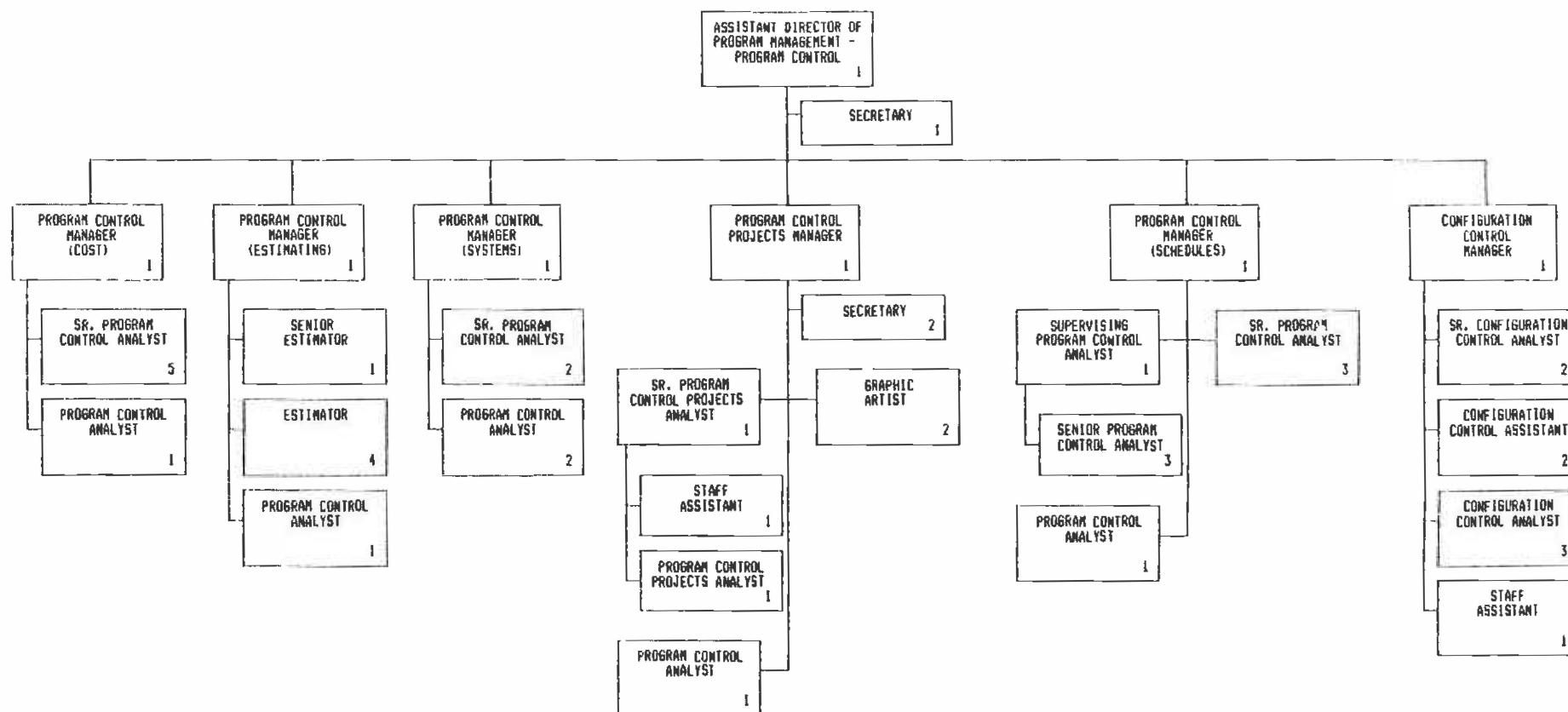
MTA LIBRARY



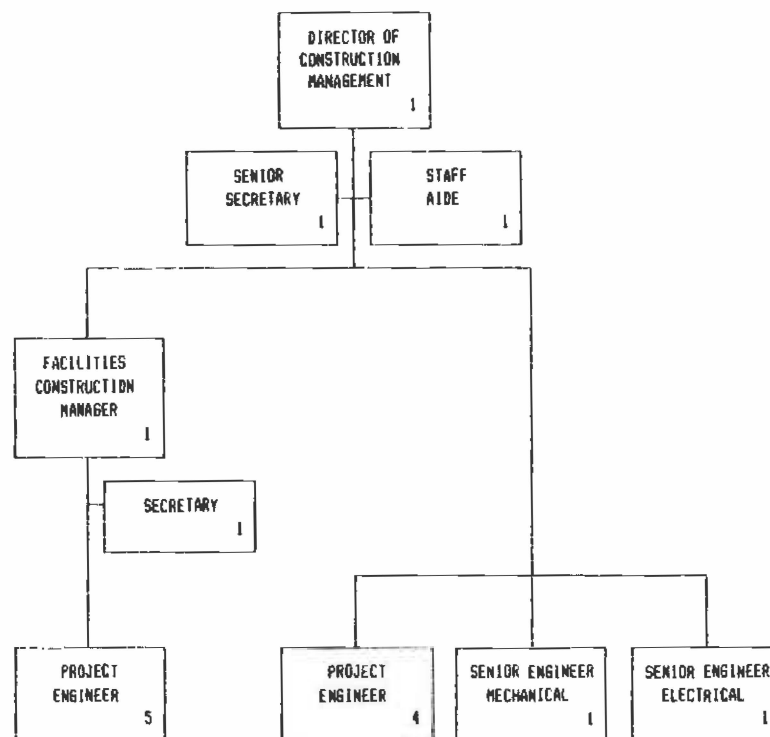
DATA LIBRARY

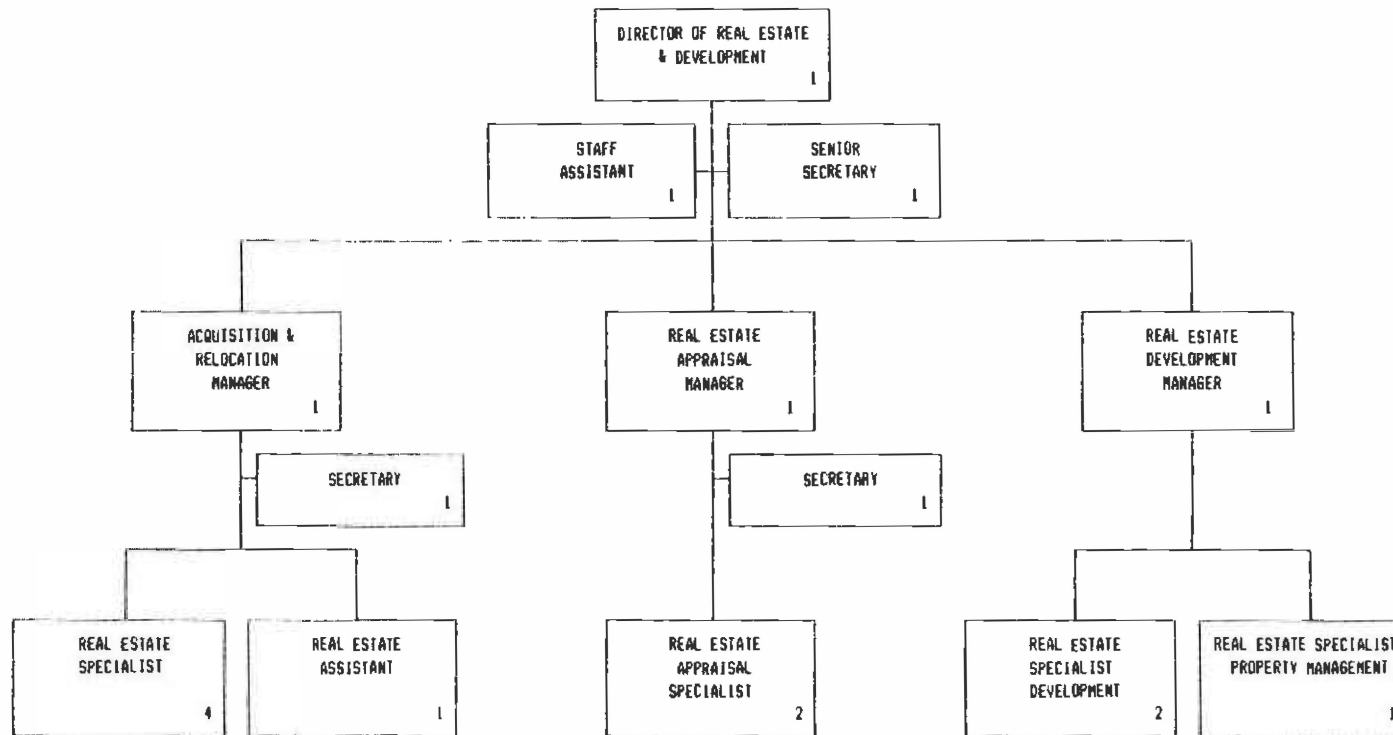


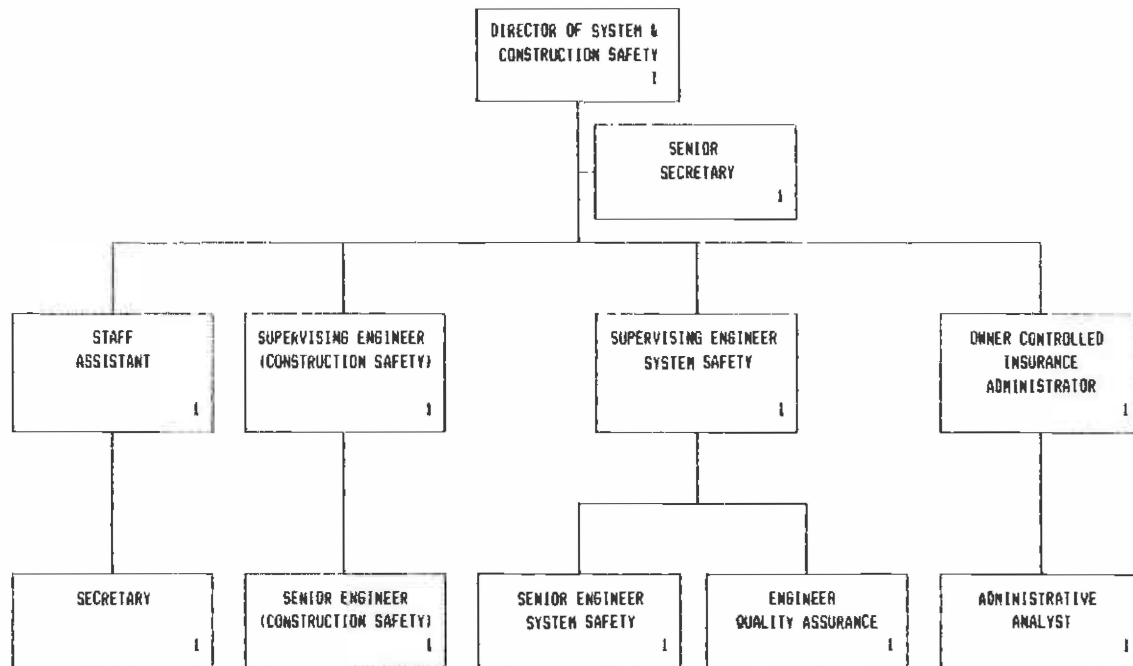




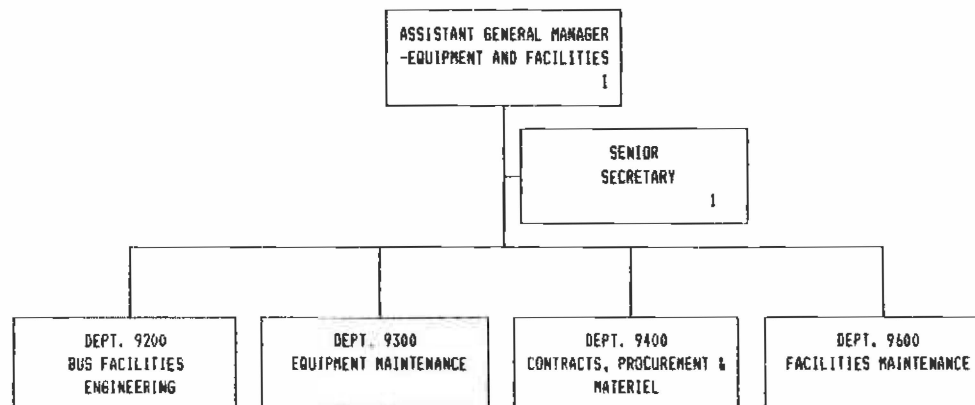
MTA LIBRARY

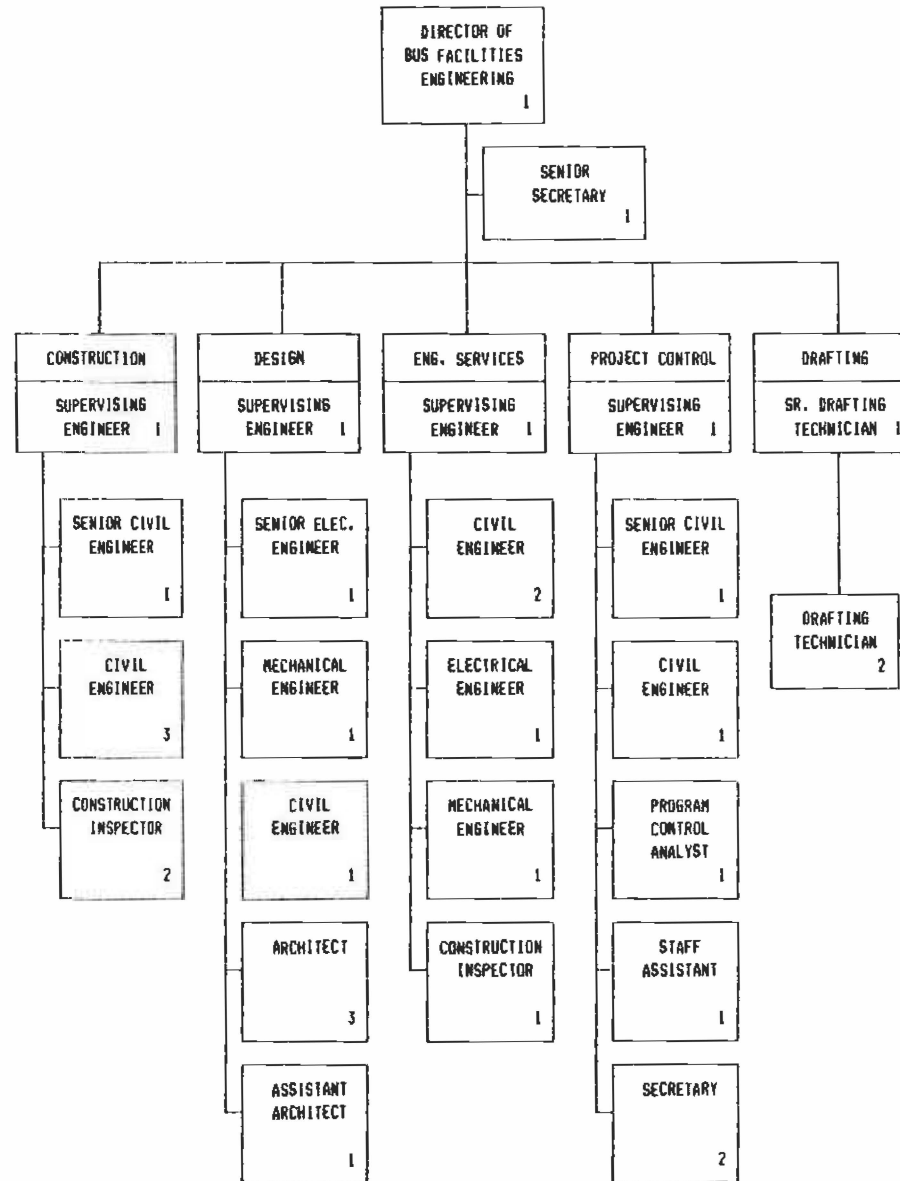


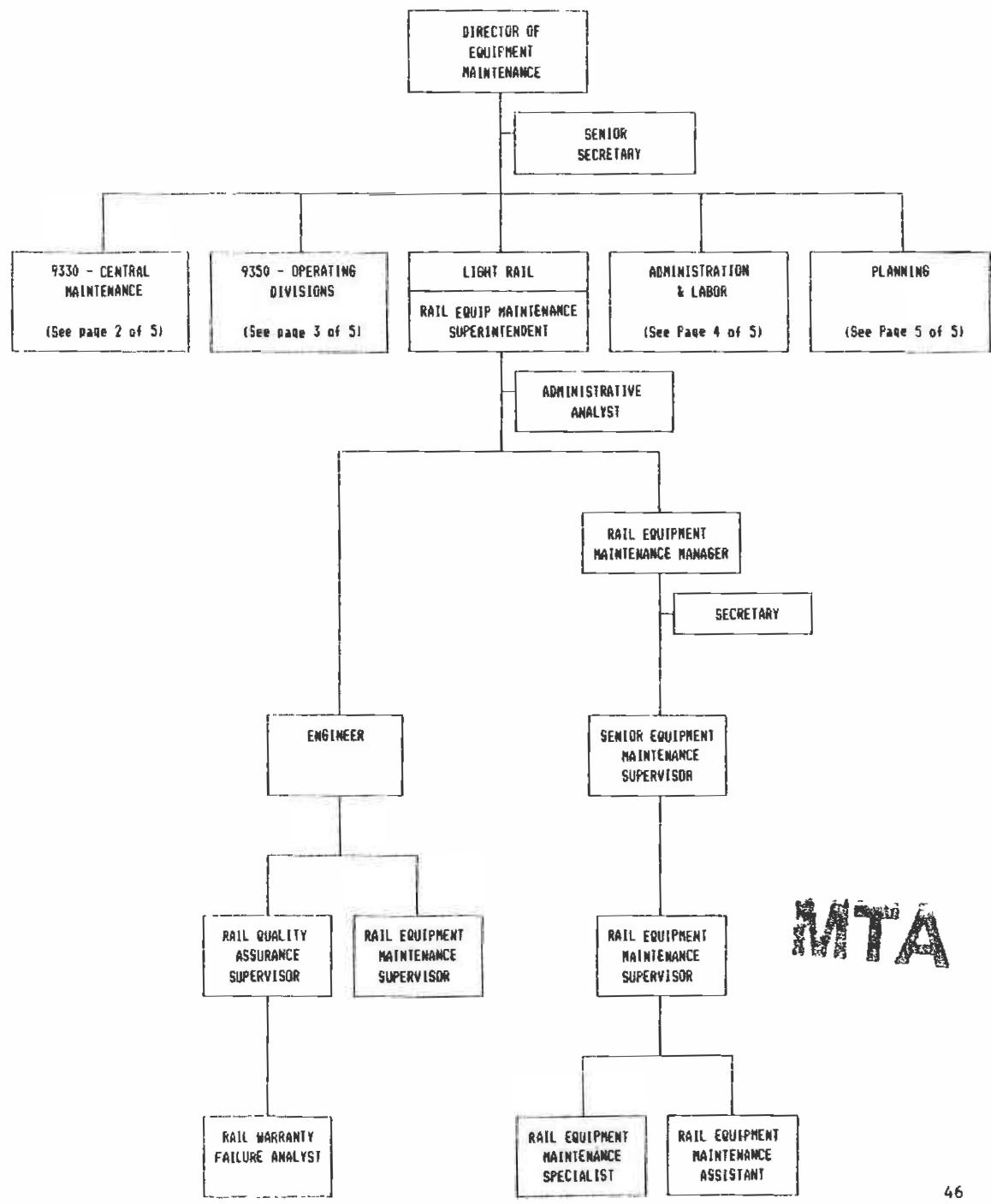




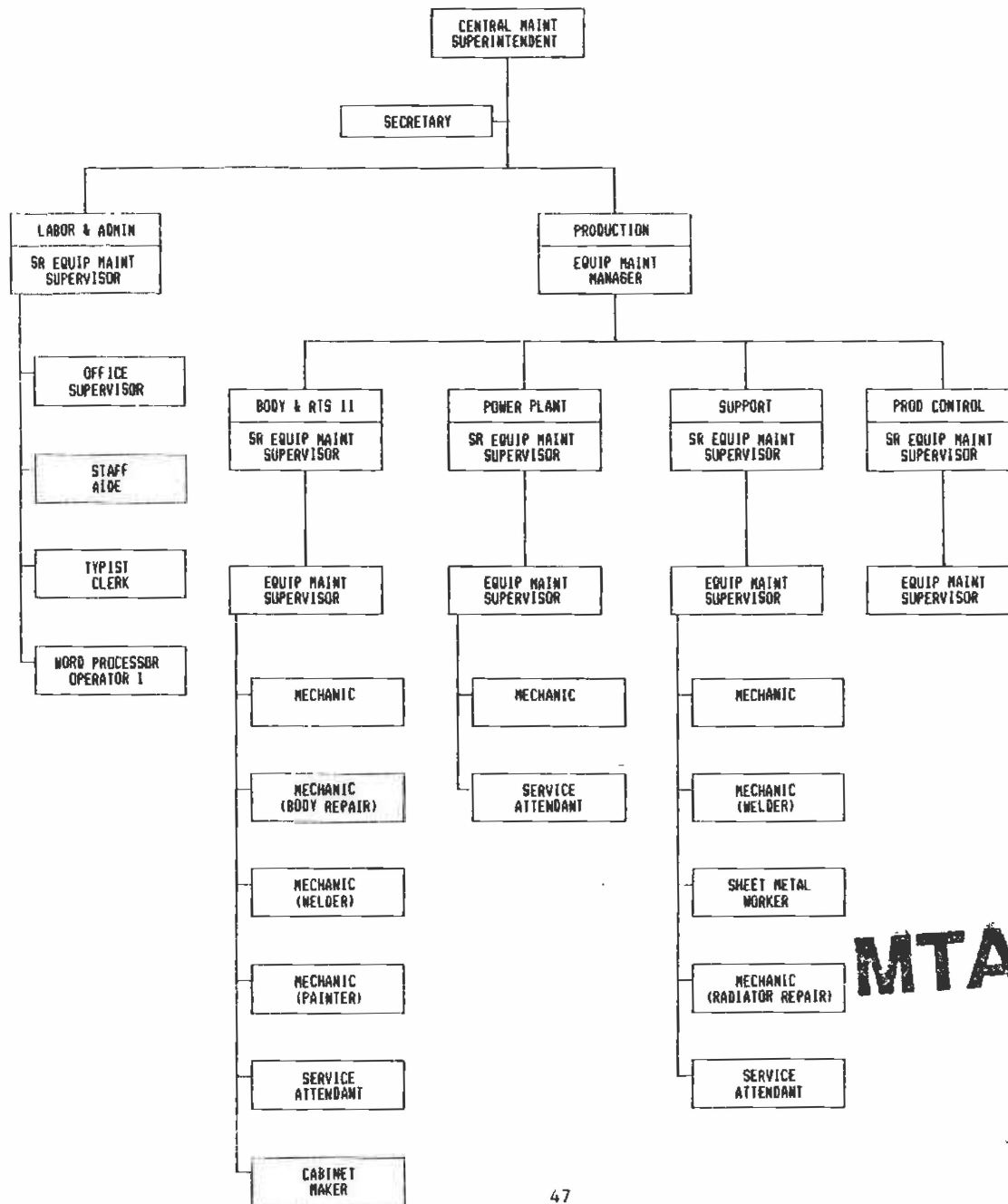
9099 - ASSISTANT GENERAL MANAGER-
EQUIPMENT AND FACILITIES



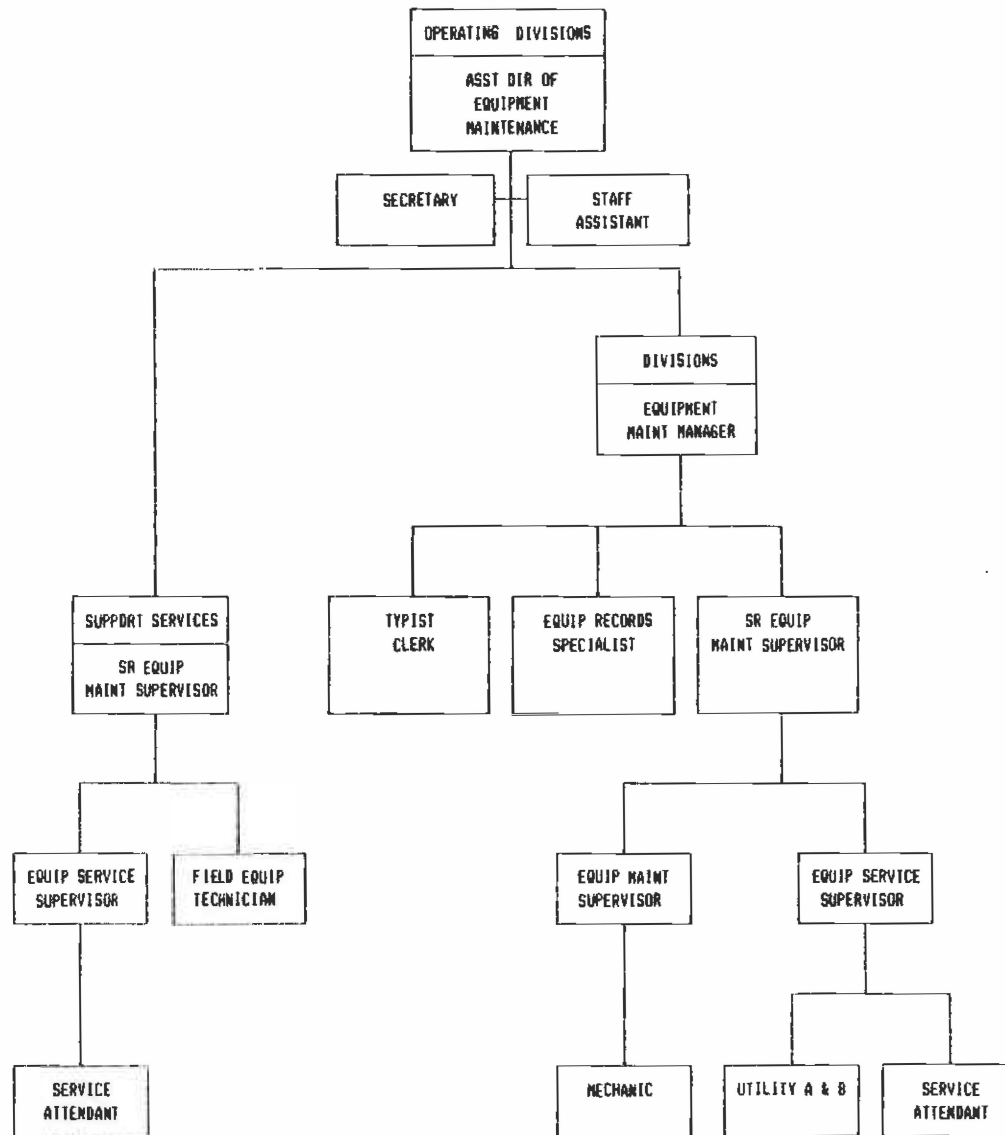


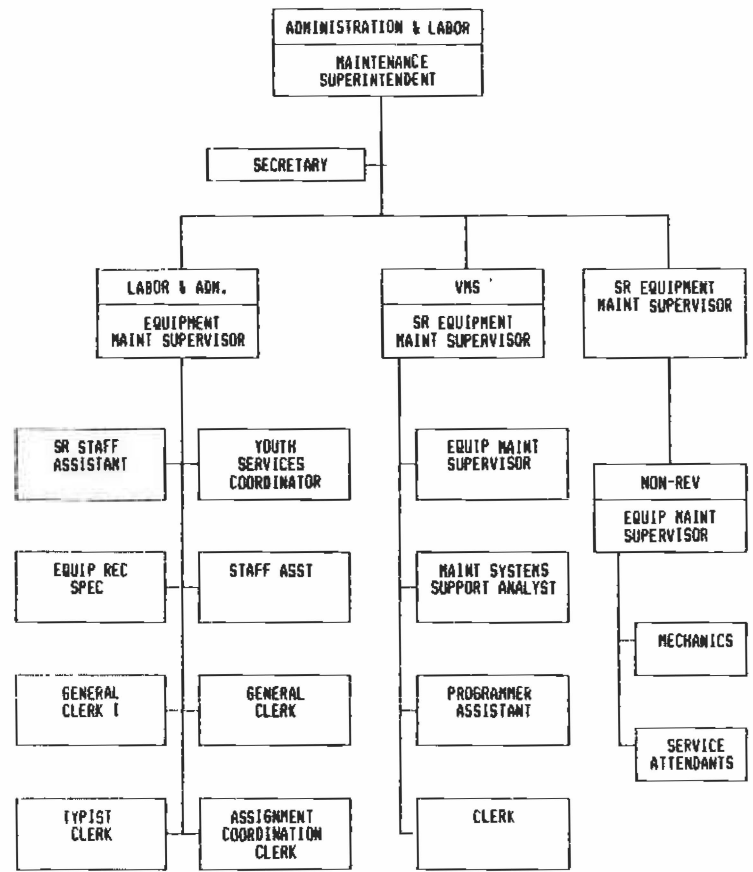


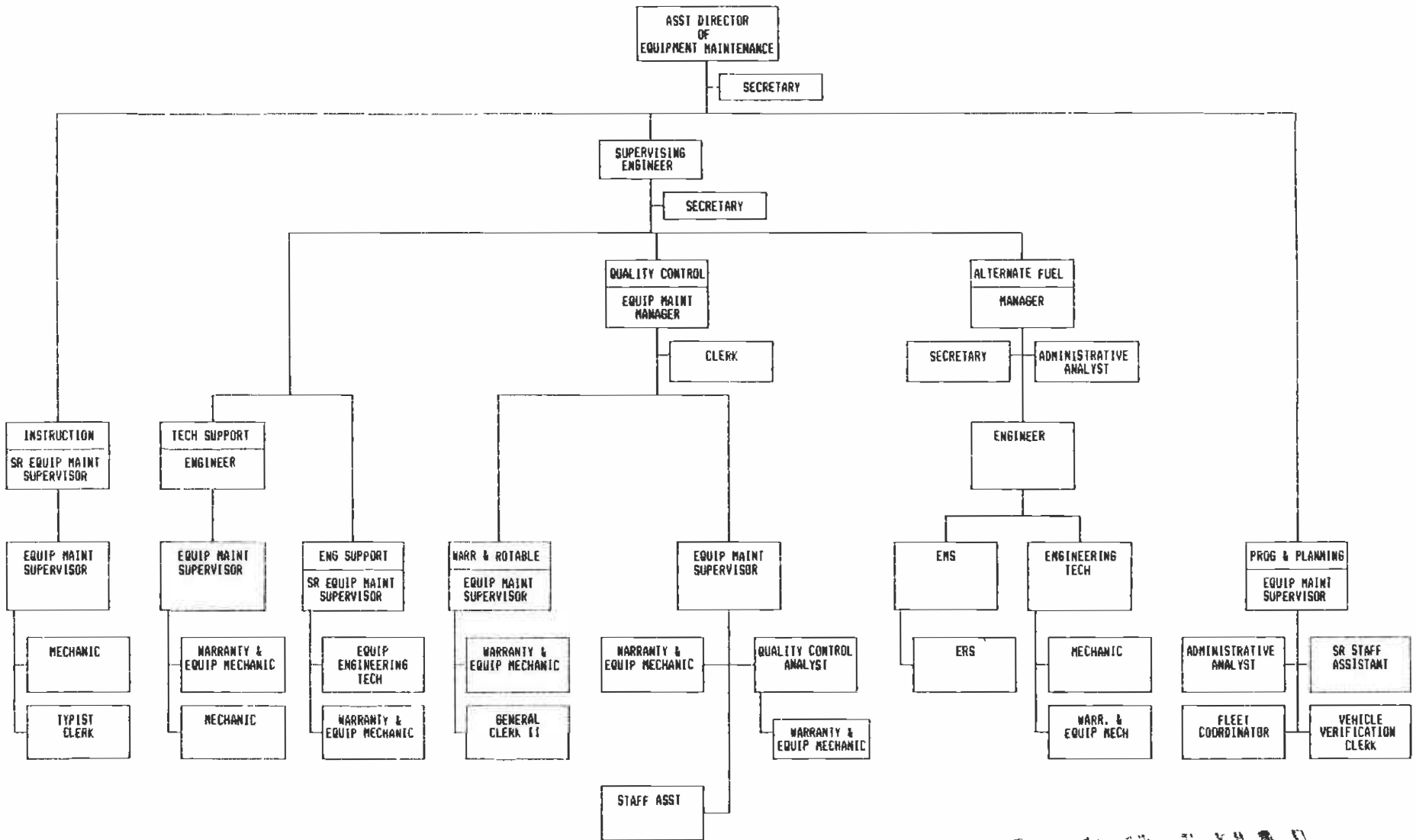
MTA LIBRARY



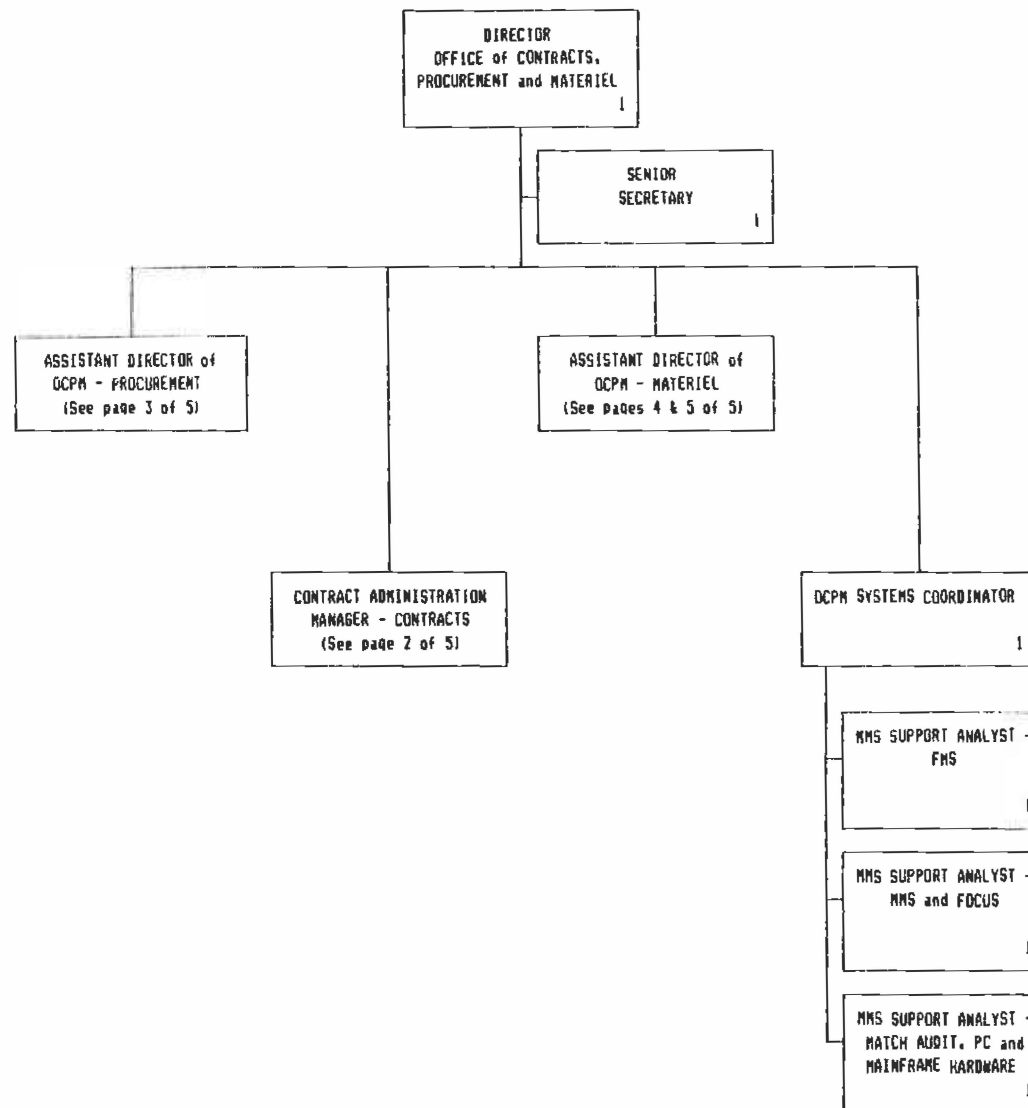
MTA LIBRARY



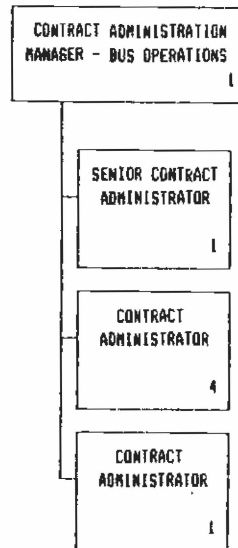


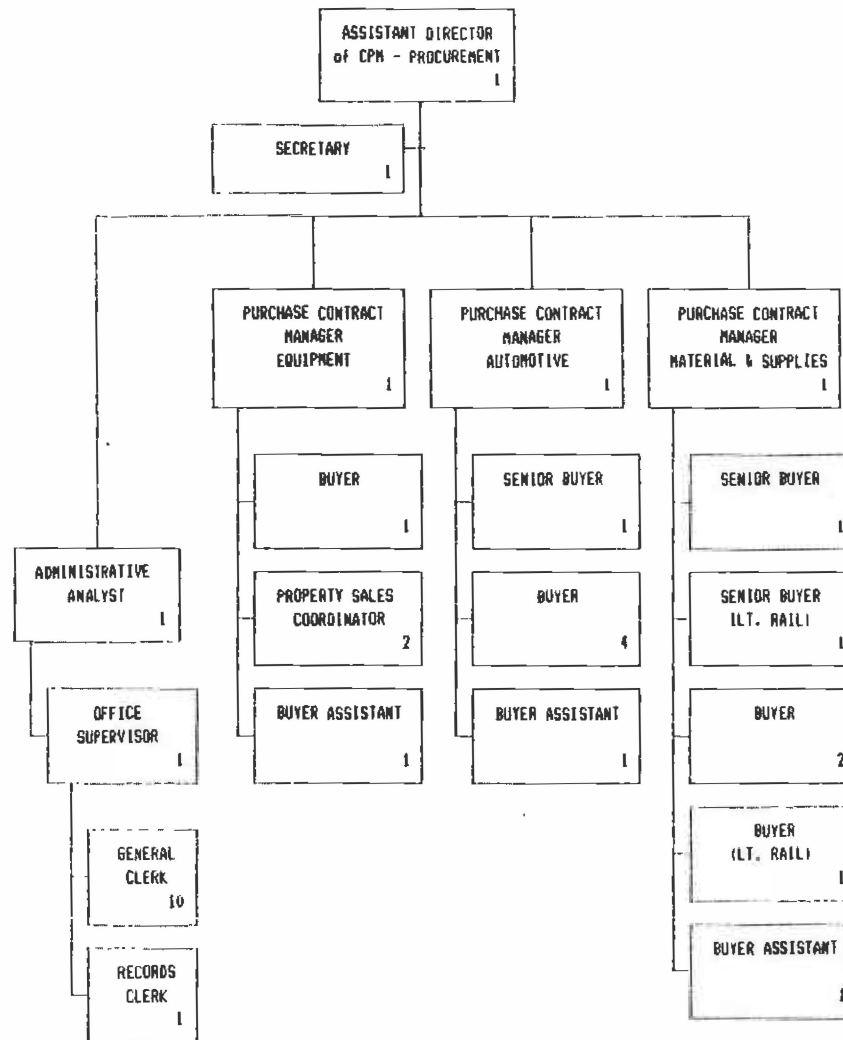


MTA LIBRARY

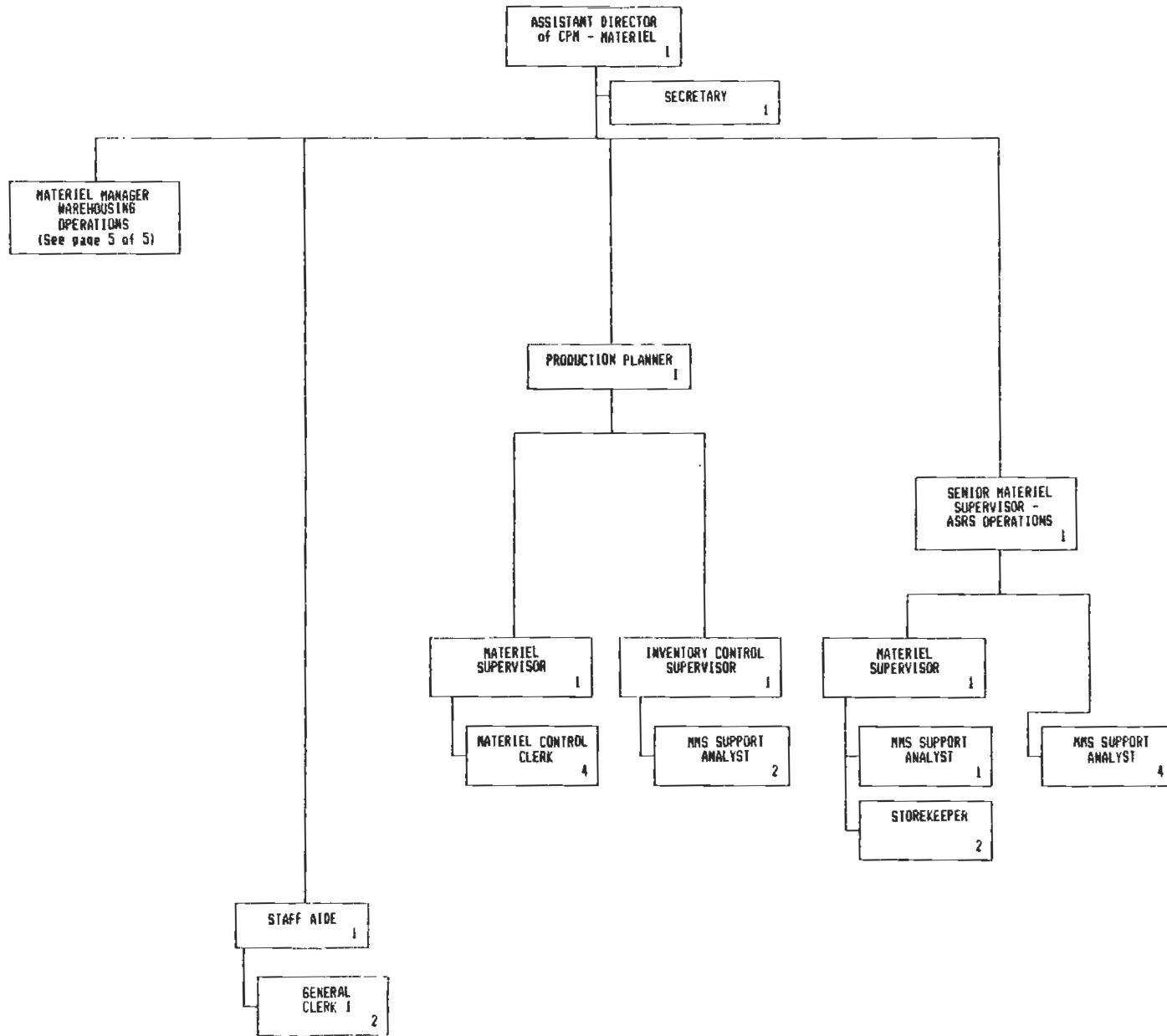


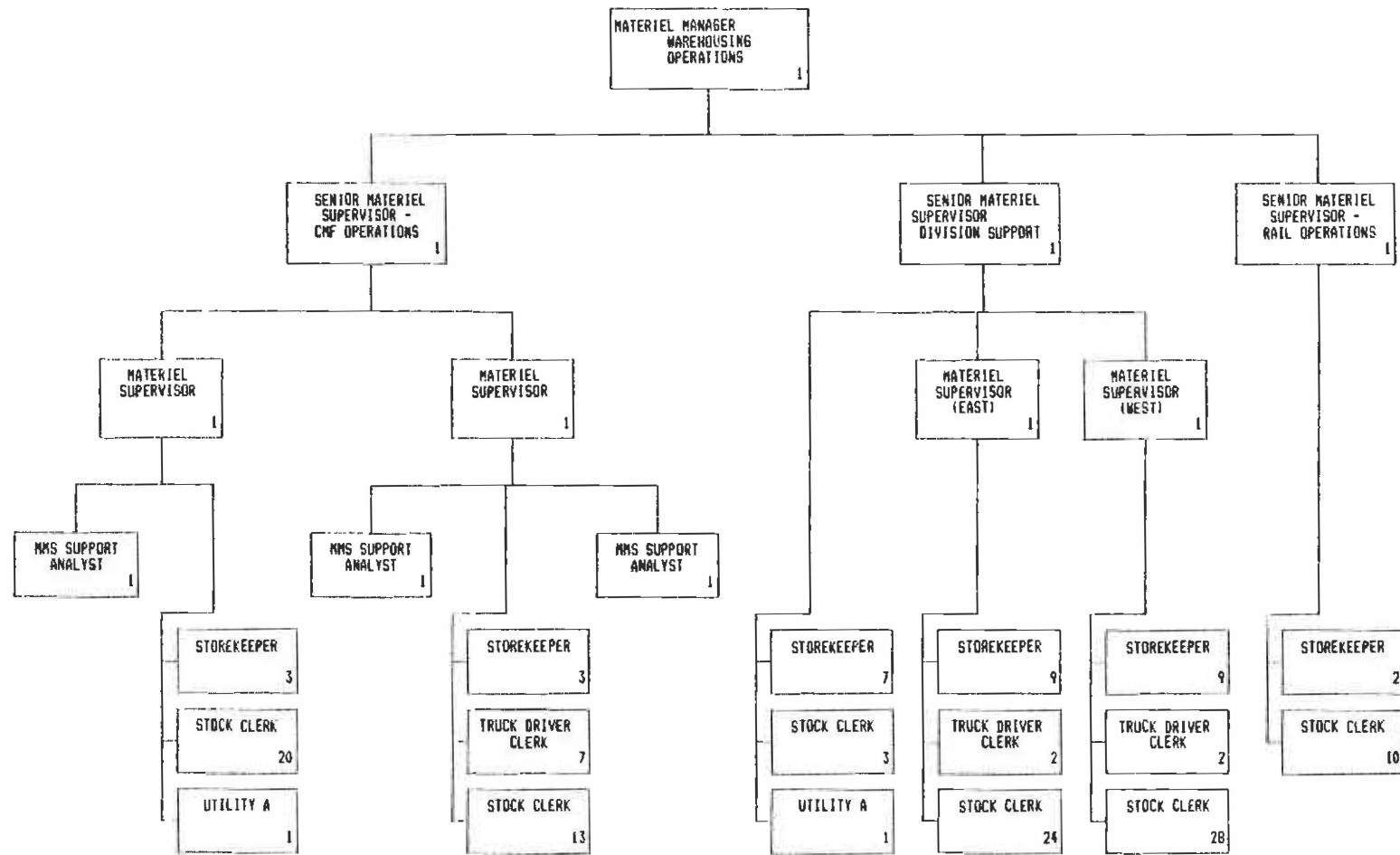
9400 - CONTRACTS, PROCUREMENT
& MATERIEL
CONTRACTS DIVISION
2 OF 5

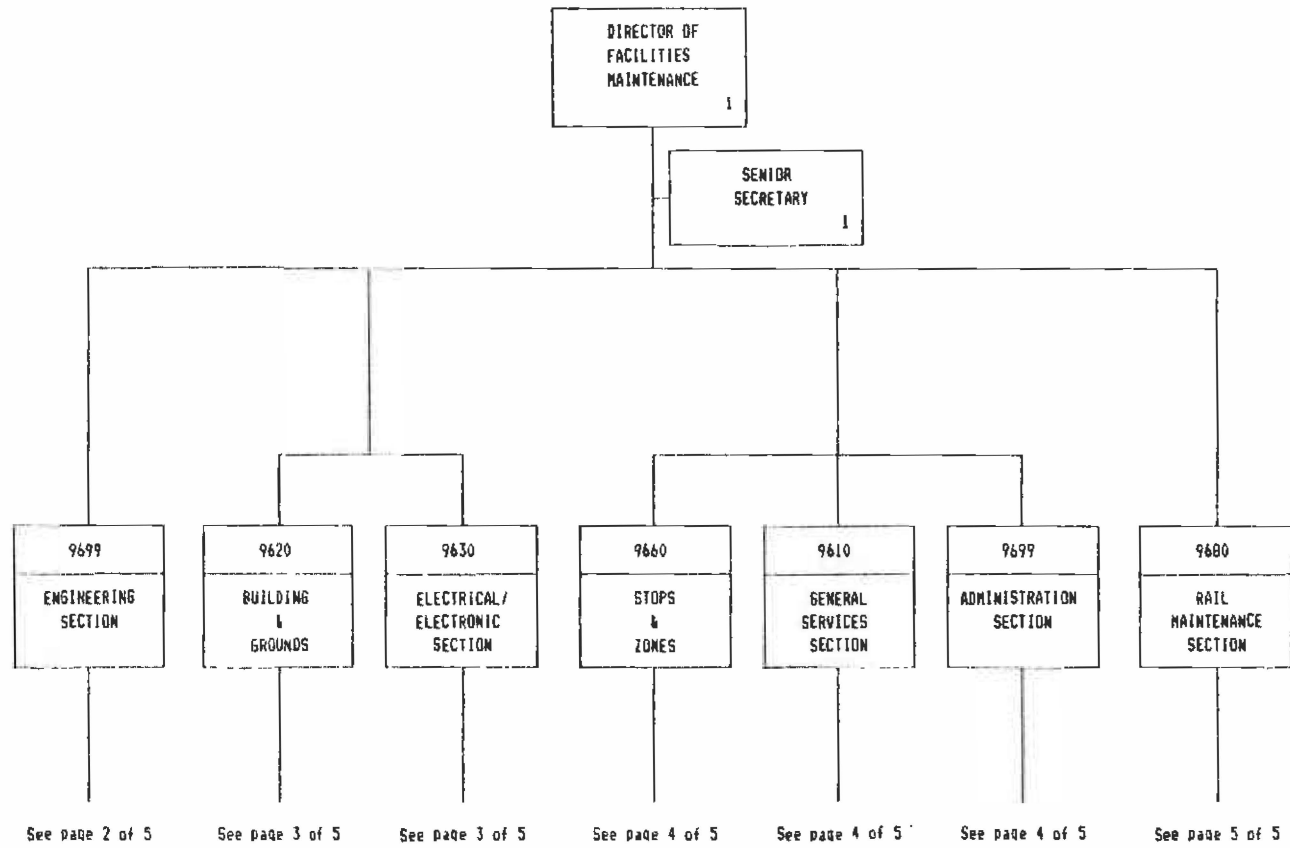


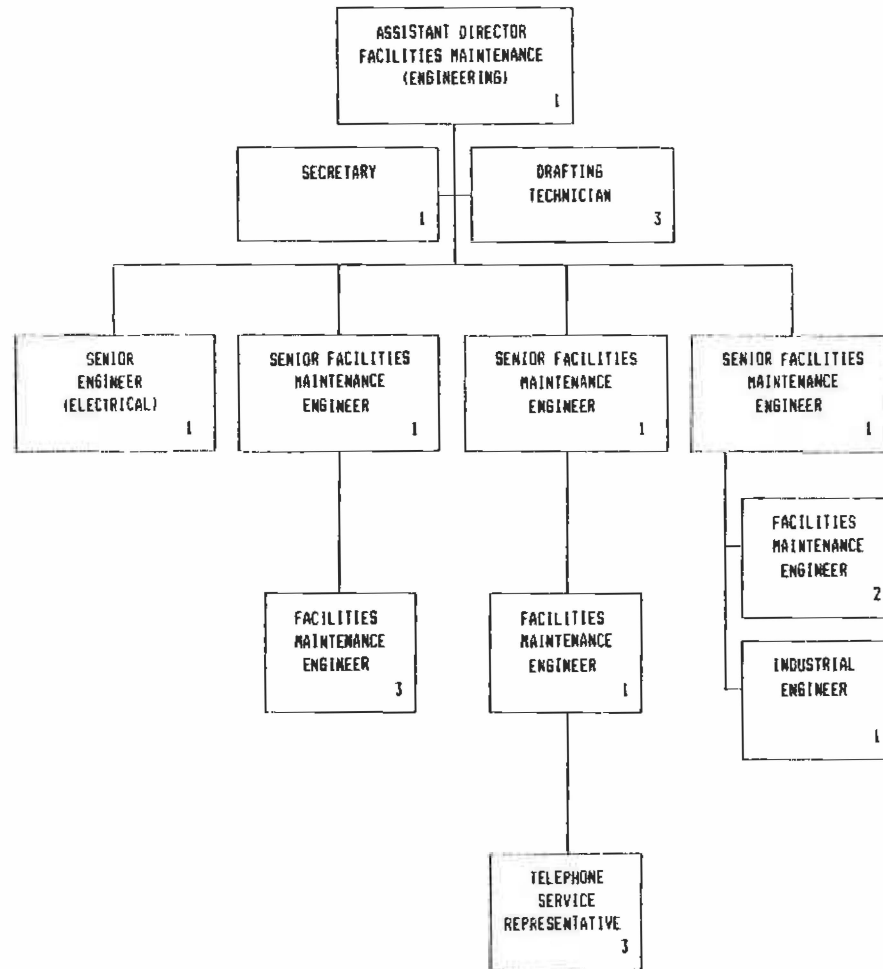


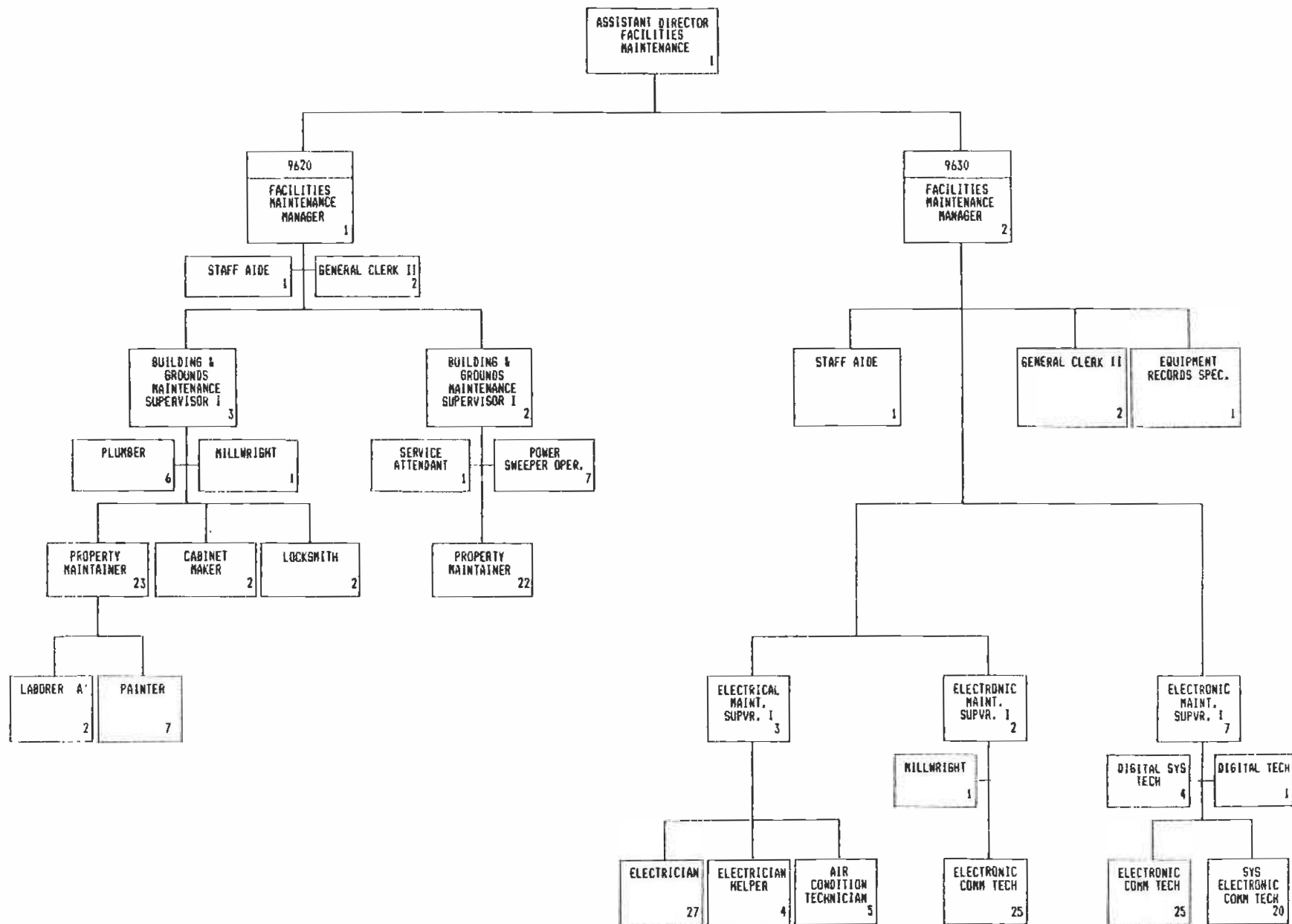
MTA LIBRARY





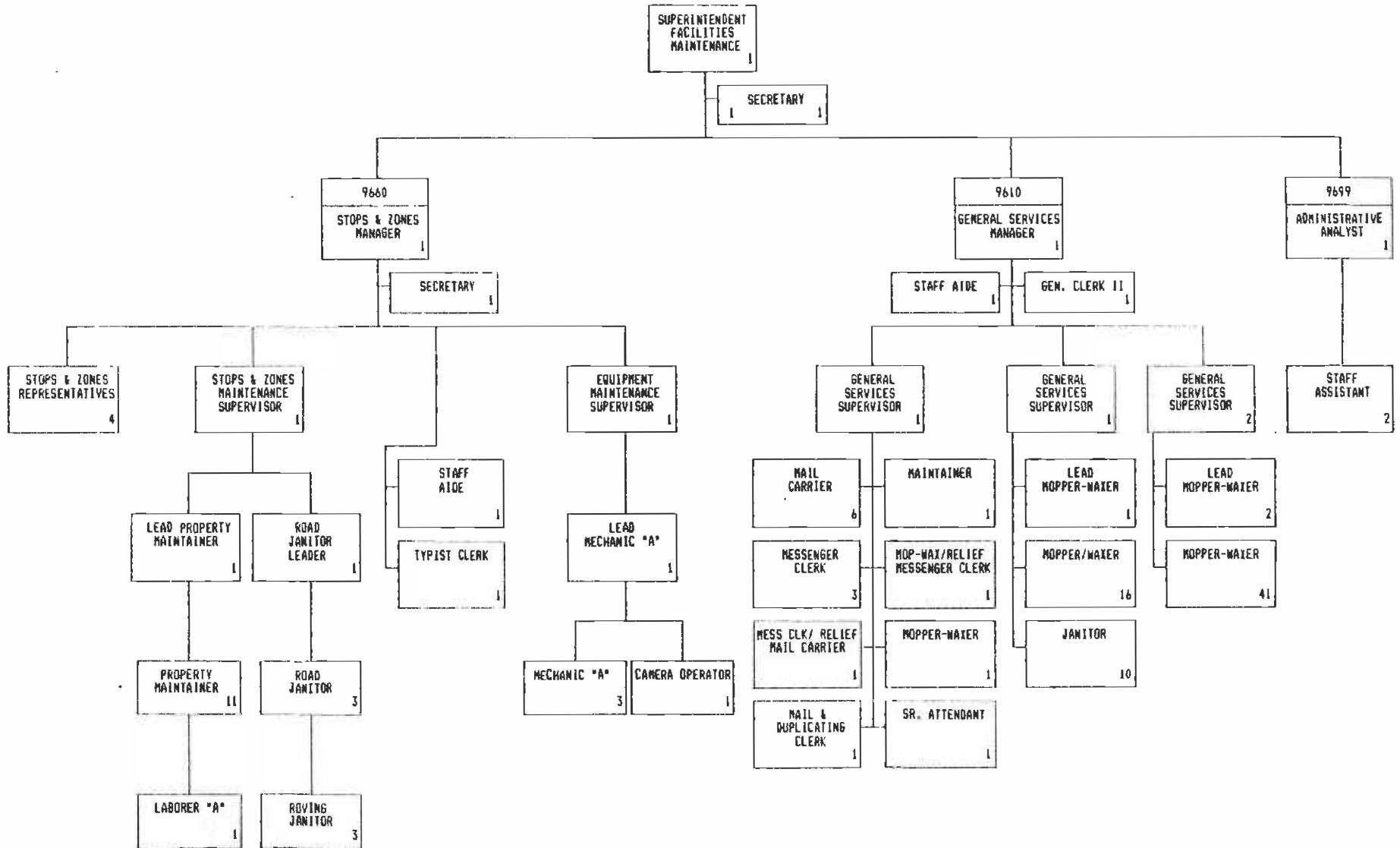






FACILITIES MAINTENANCE & OPERATIONS

9660 - SUPPORT SERVICES SECTION
 9610 - GENERAL SERVICES SECTION
 9699 - ADMINISTRATION SECTION
 Page 4 of 5



MTA LIBRARY

