

THE MANDELA VISIT

JUNE 29TH, 1990
LOS ANGELES CALIFORNIA



MTA LIBRARY



SOUTHERN CALIFORNIA RAPID TRANSIT DISTRICT

**OPERATIONS PLAN
TRANSPORTATION DEPARTMENT**

PREPARED BY OPERATIONS CONTROL & SERVICES SECTION
WITH ASSISTANCE FROM THE RTD PLANNING DEPARTMENT, JUNE 1990

THE NELSON MANDELA VISIT
JUNE 29, 1990
LOS ANGELES, CALIFORNIA

MANDELA

The name reverberates throughout Los Angeles these days in excitement. Mandela will be visiting our city on Friday, June 29, 1990.

He was incarcerated for nearly two decades and endured hard labor in a penal colony across from Cape Town Harbor. However, during the last five or so years of his confinement, he was transferred to the grounds of Victor Verster Prison Farm, 35 miles east of Cape Town.

After 27 years of imprisonment, the tall and distinguished looking Mandela, with his barely lined smooth face and his black hair flecked with gray, is a free man.

The Mandela Visit to Los Angeles on Friday, June 29, 1990 will be comprised of three main events.

- o The first one involves his appearance at Los Angeles City Hall. At approximately 11:00 a.m., he will travel from the temporary residence at the Biltmore Hotel via east on 6th Street, north on the Spring Street contra-flow lane to the City Hall. The motorcade will consist of several vehicles and will be traveling at an average speed of 25-30 MPH, covering the total route in less than 15 minutes. During this time, the motorcade route will be temporarily closed to vehicular traffic for security concerns.

Mr. Mandela will appear on the City Hall's south lawn to greet the public. Conservative estimates calls for between 40,000 and 50,000 spectators at that location. It will be necessary to close Spring Street between First and Temple Streets and First Street between Spring and Main Streets.

Should the need arise, the northbound buses on Spring Street will be diverted via Broadway, Temple Street to Spring Street and the northbound buses on Main Street via Los Angeles Street, Temple Street then Main Street. Buses traversing First Street will utilize Temple Street as a detour route.

Service delays are expected to be kept to a minimum due to the proximity of the detour routes to the scheduled routes. Strategic deployments of TOS's will prove helpful in keeping patron complaints and service interruptions to a minimum.

- o The second event involves a march that will begin at Jackie Robinson's Stadium and ends at the Coliseum. The march will start at approximately 4:30 p.m. and should conclude at 7:30 p.m., and is scheduled to utilize the southern lanes of Martin Luther King Jr. Boulevard, (eastbound traffic), to Menlo Street.

Buses originally scheduled on King Boulevard, will be detoured via Vernon Avenue - Hoover Street. The north-south traffic on Crenshaw Boulevard, Western Avenue, Normandie Avenue and Vermont Avenue will experience temporary delays estimated between 6-10 minutes and will be allowed to operate on regular scheduled routes through breaks in

the march. These buses will be assisted by L.A.P.D. officers and traffic controllers.

Vehicle Operations Supervisors will be deployed on both sides of King Boulevard at every major intersection to ensure passage of these buses. The Service Reliability Teams will closely monitor the affected lines to ascertain minimum delays.

o The Coliseum event is scheduled to start at 8:00 p.m. and end at 10:30 p.m. This program is expected to attract over 100,000 spectators. Lines affected will include 40, 81, 102, 200 and 204.

EXTRA BUS SERVICE

A total of forty (40) extra buses will be assigned to the various involved lines for the going move. The buses will be stored at Manual Art High School and on Broadway, just south of Jefferson Boulevard to be utilized later for the Coliseum's going away move.

DEDICATED VEHICLE OPERATIONS STAFF

A total of seven (7) TOS(VO)'s will be required for the first event at the City Hall. Nineteen (19) TOS's will be utilized for the second and third events at King Boulevard and the Coliseum.

SCHEDULE CHECKING STAFF

The Scheduling Department will provide six (6) Schedule Checkers to verify load factors on the affected lines. This will help facilitate the going away move from the Colliseum.

ADDITIONAL MAINTENANCE PERSONNEL/VEHICLES

The Maintenance Department has committed two (2) trucks and two (2) Roving Mechanics to stand by during the march and Coliseum events in order to ensure fast response to breakdown locatsion.

MTA LIBRARY

Based on information currently available, the Southern California Rapid Transit District faces a number of potential challenges and disruptions to our service. Accordingly, it is anticipated that there will be significant impact on regular line service as a result of passengers utilizing the bus system to attend this special event. Undoubtedly there will be delays to our regular patrons as one of the events will take place during the P.M. peak travel period. It is with this thought in mind that the following concerns are raised.

1. All plans may suddenly change, without prior warnings.
2. All street closures will be handled by the Los Angeles Department of Transportation (DOT) Traffic Officers.
3. There will be no special services on RTD lines such as those in the 1984 Olympic Games. However, many District lines will be augmented to accommodate the anticipated demand.

PERSONNEL ASSIGNMENTS

<u>NAME</u>		<u>RADIO CALL</u>
Adams, J.	TOS (C)	
Alexander, R.	STOS (VO)	F-81
Angelo, R.	STOS (VO)	F-85
Archuletta, F.	STOS (VO)	F-84C
Brissey, T.	TOS (VO)	F-83E
Cain, N.	TOS (VO)	F-81C
Carlson, H.	STOS (VO)	F-84
Castillo, D.	TOS (C)	
Corton, D.	Sched.	
Davis, W.	TOS (C)	
Delgado, L.	TP Unit	1X421
Diaz, C.	TP Unit	1X422
Dorsett, L.	TOS (VO)	F-82B
Dover, J.	TOS (C)	
Euredjian, A.	TOS (C)	
Feickert, P.	TOS (C)	
Fields, E.	STOS (VO)	F-83
Flournoy, C.	STOS (VO)	F-85
Fordham, T.	TOS (VO)	F-84D
Foster, J.	Sched.	
Gamino, J.	Tow Truck	H-302
Gassner, W.	TOS (VO)	F-81F
Goldblatt, E.	TOS (C)	
Gonzales, D.	TOS (C)	
Gordon, M.	TP Unit	2X421
Graf, T.	TOS (VO)	F-85D
Greene, E.	TOS (C)	
Guglielmo, E.	TOS (C)	
Guyton, B.	Sched.	
Hampton, J.	TOS (C)	
Herrington, O.	TP Unit	1X421
Holsberry, W.	TOS (VO)	F-84A
Ivory, W.	TOS (VO)	F-84C
Jackson, T.	TOS (VO)	F-82D
Johnson, T.	TOS (VO)	F-85A
Jones, A.	TOS (VO)	F-85C
Jones, K.	TOS (VO)	F-85B
Kakazu, P.	TOS (C)	
Kosman, J.	TOS (VO)	F-82C
Laun, G.	TOS (C)	
Lopez, J.	Sched.	
Martin, P.	TOS (C)	
Maye, W.	TOS (VO)	F-81B
Mc Cargo, I.	TOS (VO)	F-84B
Mellon, P.	TOS (C)	
Mendoza, H.	TOS (C)	
Mendoza, S.	Field Equip. Tech.	M-156
Moody, J.	TOS (VO)	F-81A
Morton, B.	TOS (C)	

NAME

RADIO
CALL

Neal, J.	TOS (VO)	F-85B
Nedelcoff, R.	TOS (C)	
Olivo, R.	TOS (C)	
Ortiz, D.	TOS (C)	
Robbins, B.	TP Unit	2X421
Ross, B.	Tow Truck	H-306
Sanders, J.	TOS (VO)	F-81D
Santee, R.	TOS (C)	
Scott, R.	TOS (VO)	F-81A
Seelig, D.	TOS (C)	
Solomon, M.	TOS (C)	
Triche, N.	TOS (C)	
Turk, M.	TOS (C)	
Villalobos, J.	TOS (VO)	F-82A
Walker, P.	Field Equip. Tech.	M-154
Wallin, G.	TOS (C)	
Walling, R.	Sched.	
Wilson, J.	Sched.	
Woods, D.	TOS (C)	
Worthington, H.	TP Unit	1X422
Zimmerman, R.	TP Unit	1A422
Zuniga, J.	TP Unit	2X422

A. M. VEHICLE OPERATIONS STAFF ASSIGNMENT

LOS ANGELES CITY HALL EVENT

SR. TOS (VO) IN CHARGE: R. ANGELO F-85

<u>LOCATION</u>	<u>TOS (VO)</u>	<u>RADIO CALL ASSIGNMENT</u>
N/B Spring & 5th Sts.	W. Maye	F-81B

Detour Lines 28, 38, 70, 81, 90, 94, & 496 as per Detour Notice
No. 90-371.

7.1

A. M. VEHICLE OPERATIONS STAFF ASSIGNMENT

LOS ANGELES CITY HALL EVENT

SR. TOS (VO) IN CHARGE: R. ANGELO F-85

<u>LOCATION</u>	<u>TOS (VO)</u>	<u>RADIO CALL ASSIGNMENT</u>
N/B Main & Winston Sts.	W. Gassner	F-81F
N/B Spring & Aliso Sts.	*N. Cain	F-81C
E/B Temple St. & Broadway	F. Archuletta	F-84C

Detour Lines 33, 55, 56 & 92 (Rte. 93) as per Detour Notice
No. 90-372

*NOTE: Also detour Lines 28 (Rtes. 27, 83, 84, 85, & 328),
38(Rte. 71), 70, 81, 90(Rte. 91), 94, & 495 Southbound, as per
Detour Notice No. 90-371.

A. M. VEHICLE OPERATIONS STAFF ASSIGNMENT

LOS ANGELES CITY HALL EVENT

SR. TOS (VO) IN CHARGE: R. ANGELO F-85

<u>LOCATION</u>	<u>TOS (VO)</u>	<u>RADIO CALL ASSIGNMENT</u>
N/B Olive & 2nd Sts.	R. Scott	F-81A
S/B Spring & Aliso Sts.	*T. Jackson	F-82D

Detour Lines 76, 78(Rte. 79), 96(Rte. 97), 401(Rte. 402), 480, 483(Rte. 485), 484, 487(Rtes. 489 & 491) & 490 as per Detour Notice No. 90-373.

*NOTE: Also detour Lines 28(Rtes 27, 83, 85, & 328), 38(Rte. 71), 70, 81, 90(Rte. 91), 94 & 496 Southbound, as per Detour Notice No. 90-371.

A. M. VEHICLE OPERATIONS STAFF ASSIGNMENT

LOS ANGELES CITY HALL EVENT

SR. TOS (VO) IN CHARGE: R. ANGELO F-85

<u>LOCATION</u>	<u>TOS (VO)</u>	<u>RADIO CALL ASSIGNMENT</u>
N/B Broadway & 1st St.	T. Graf	F-85D
N/B 1st & San Pedro Sts.	J. Kosman	F-82C
S/B Los Angeles & Aliso Sts.	J. Neal	F-85B
N/B Olive & 1st Sts.	P. Johnson	F-85A

Detour Lines 30(Rte. 31), 40(Rte. 42), 444 & 446(Rte. 447) as per
Detour Notice No. 90-374.

TRANSPORTATION DEPARTMENT

DETOUR NOTICE
NO. 90-371

LINES: 28(RTES.27,83,84,85 & 328), 38(RTE.71), 70, 81, 90(RTE.91),
94 & 496

IN EFFECT: FRIDAY, JUNE 29, 1990, ONLY DURING THE HOURS FROM 10:00 A.M.
TO 2:00 P.M. OR WHEN BARRICADES ARE ERECTED.

SUBJECT: TEMPORARY DETOUR

LOCATION: SPRING ST. % FIRST ST. AND TEMPLE ST.

REASON: NELSON MANDELA VISIT

NORTHBOUND: Regular route to Spring St. contra-flow lane and 5th St.,
then continue via Spring St. contra-flow lane to (R) 4th
St., (L) Los Angeles St., (L) Temple St., (R) Spring St.
contra-flow lane and regular route.

SOUTHBOUND: Regular route to Spring St. and Aliso St., then continue via
Spring St. to (L) Temple St., (R) Los Angeles St., (R) 3rd
St., (L) Spring St. and regular route.

MAKE PASSENGER STOPS AT ALL INTERSECTIONS WHERE IT IS SAFE TO
DO SO WHILE OPERATING OVER THE DETOUR ROUTE.

Operations Control and Services
Districts 1, 2 & 3/F-85

Issued: June 26, 1990
Divisions: 1,3,9,10,13,15 & 18
Transp: DO:AW
24.34

TRANSPORTATION DEPARTMENT

DETOUR NOTICE
NO. 90-372

LINES: 33, 55, 56 & 92(RTE.93)

IN EFFECT: FRIDAY, JUNE 29, 1990, ONLY DURING THE HOURS FROM 10:00 A.M.
TO 2:00 P.M. OR WHEN BARRICADES ARE ERECTED.

SUBJECT: TEMPORARY DETOUR

LOCATION: SPRING ST. % 1ST ST. AND TEMPLE ST.
MAIN ST. % 1ST ST. AND TEMPLE ST.

REASON: NELSON MANDELA VISIT

NORTHBOUND: Regular route to Main St. and 5th St., then continue via
Main St. to (R) 4th St., (L) Los Angeles St., (L) Temple
St., (R) Main St. and regular route.

NOTE: Line 92(Rte.93), divert as per detour route to Temple
St. and Main St., then continue via Temple St. to Spring
St. and regular route.

SOUTHBOUND: Regular route to Spring St. and Aliso St., then continue
via Spring St., (L) Temple St., (R) Los Angeles St., (R)
3rd St., (L) Spring St. and regular route.

NOTE: Line 92(Rte.93), regular route to Temple St. and Broadway,
then continue via Temple St. to (R) Los Angeles St. and detour
as per above.

MAKE PASSENGER STOPS AT ALL INTERSECTIONS WHERE IT IS SAFE TO
DO SO WHILE OPERATING OVER THE DETOUR ROUTE.

Operations Control and Services
Districts 1, 2 & 3/F-85

Issued: June 26, 1990
Divisions: 6, 10, 15 & 18
Transp: DO:AW
24.35

TRANSPORTATION DEPARTMENT

DETOUR NOTICE
NO. 90-373

LINES: 76, 78(RTE.79), 96(RTE.97), 401(RTE.402), 480,
483(RTE.485), 484, 487(RTES.489 & 491) & 490

IN EFFECT: FRIDAY, JUNE 29, 1990, ONLY DURING THE HOURS FROM 10:00 A.M.
TO 2:00 P.M. OR WHEN BARRICADES ARE ERECTED.

SUBJECT: TEMPORARY DETOUR

LOCATION: SPRING ST. & 1ST ST. AND TEMPLE ST.

REASON: NELSON MANDELA VISITATION

NORTHBOUND: Regular route to Olive St. and 2nd St., then continue via
Olive St. to (L) 1st St., (R) Grand Ave., (R) Temple St.,
(L) Spring St. contra-flow lane and regular route.

SOUTHBOUND: Regular route to Spring St. and Aliso St., then continue via
Spring St. to (R) Temple St., (L) Grand Ave. to 1st St. and
regular route.

MAKE PASSENGER STOPS AT ALL INTERSECTIONS WHERE IT IS SAFE TO
DO SO WHILE OPERATING OVER THE DETOUR ROUTE.

Operations Control and Services
Districts 1, 2 & 3/F-85

Issued: June 26, 1990
Divisions: 3, 9, 15 & 16
Transp: DO:AW
24.36

TRANSPORTATION DEPARTMENT

DETOUR NOTICE
NO. 90-374

LINES: 30(RTE.31), 40(RTE.42), 444 & 446(RTE.447)
IN EFFECT: FRIDAY, JUNE 29, 1990, ONLY DURING THE HOURS FROM 10:00 A.M.
TO 2:00 P.M. OR WHEN BARRICADES ARE ERECTED.
SUBJECT: TEMPORARY DETOUR
LOCATION: 1ST ST. & MAIN ST. AND SPRING ST.
REASON: NELSON MANDELA VISIT

LINES 30(RTE.31) & 40(RTE.42)

EASTBOUND: Regular route to Broadway and 2nd St., then continue via
Broadway to (R) Temple St., (R) Los Angeles St., (L) 1st St.
and regular route.

WESTBOUND: Regular route to 1st St. and San Pedro St., then continue via
1st St. to (R) Los Angeles St., (L) Temple St., (L) Broadway
to 1st St. and regular route.

LINES 444 & 446(RTE.447)

NORTHBOUND: Regular route to 1st St. and Hill St., then continue via 1st
St. to (L) Broadway, (R) Temple St., (L) Los Angeles St.
and regular route.

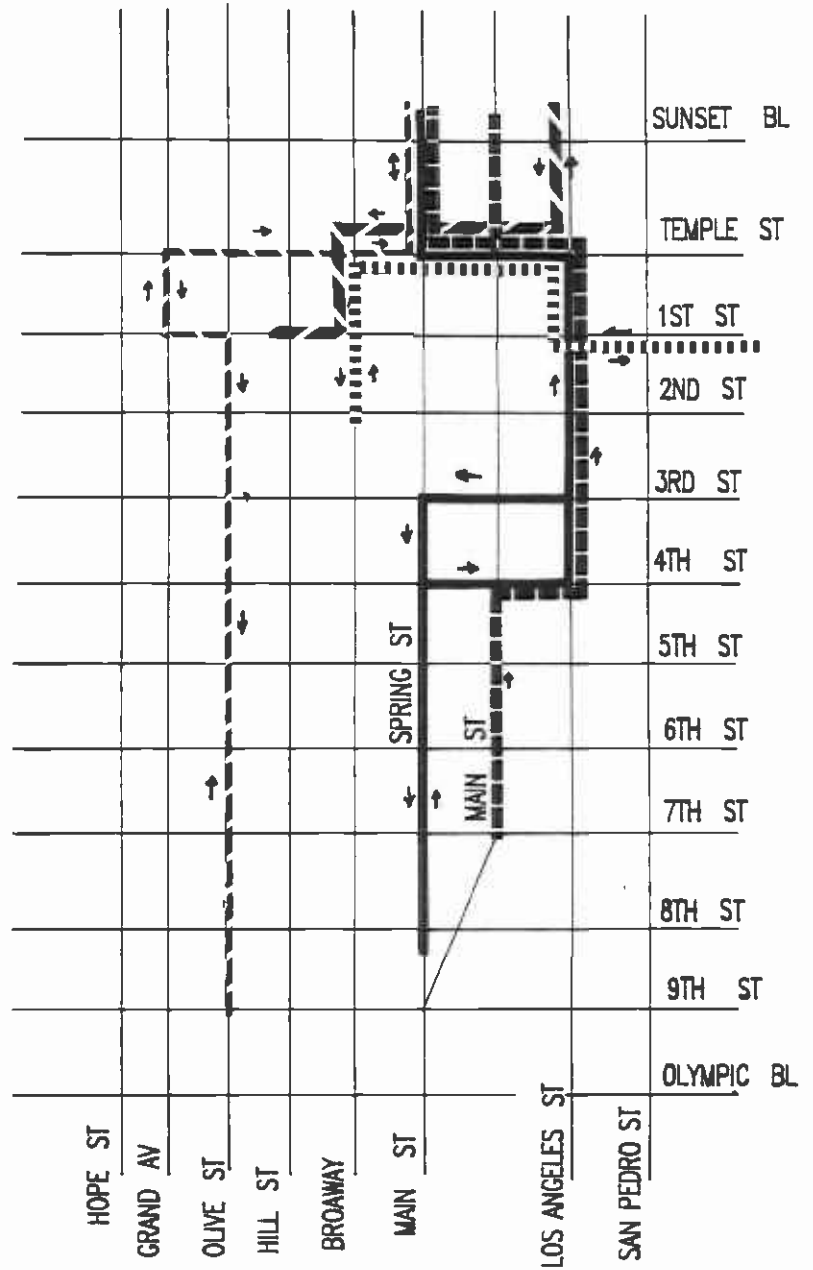
SOUTHBOUND: Regular route to Los Angeles St. and Aliso St., then continue
via Los Angeles St. to (R) Temple St., (L) Broadway, (R) 1st
St. and regular route.






MAKE PASSENGER STOPS AT ALL INTERSECTIONS WHERE IT IS SAFE TO
DO SO WHILE OPERATING OVER THE DETOUR ROUTE.

Operations Control and Services
Districts 1, 2 & 3/F-85

Issued: June 26, 1990
Divisions: 1, 5, 12 & 18
Transp: DO:AW
24.37

AM DOWNTOWN LA TEMPORARY DETOUR



-  27-28-38-70-71-81-83-84-85-90-91-94-328-496
-  35-55-56-92-93
-  76-78-79-96-97-401-402-480-483-485-484-487-489-491-490
-  30-31-40-42
-  444-446-447

P. M. VEHICLE OPERATIONS STAFF ASSIGNMENT
THE M L KING BLVD. MARCH AND COLISEUM EVENTS

SR. TOS (VO) IN CHARGE: C. FLOURNOY F-85
 SR. TOSs (VO) SOUTH OF M L KING BLVD: H. CARLSON F-84
 P. ALEXANDER F-81
 SR. TOS (VO) NORTH OF M L KING BLVD. E. FIELDS F-83

<u>LOCATION</u>	<u>TOS (VO)</u>	<u>RADIO CALL ASSIGNMENT</u>
N/S M L King & Crenshaw Blvds.	A. Jones	F-85C Lines 40 (Rte.42)
S/S M L King & Crenshaw Blvds.	K. Jones	F-85 Lines 105, 210, 611
N/S M L King Blvd. & Arlington Ave.	J. Sanders	F-81D Line 209
S/S M L King Blvd. & Arlington Ave.	J. Moody	F-81A
N/S M L King Blvd. & Western Ave.	J. Villalobos	F-82A Line 207
S/S M L King Blvd. & Western Ave.	L. Dorsett	F-82B
N/S M L King Blvd. & Normandie Ave.	W. Durazo	F-85E Line 206
S/S M L King Blvd. & Normandie Ave.	W. Holsberry	F-84A
N/S M L King Blvd. & Vermont Ave.	W. Ivory	F-84C Line 204
S/S M/L King Blvd. & Vermont Ave.	T. Brissey	F-83E
E/B Vernon Ave. & Hoover St.	T. Fordham	F-84D*

* Roving between Vernon Ave. & Hoover St. and Broadway & M L King Blvd. Detour Lines 40, 42 & 105 under Contingency Operations Plan. The eastbound lanes on Martin Luther King Blvd. will be closed to traffic. Lines 40 & 42 should be detoured as per Detour Notice No. 90-375. Westbound buses will operate via regular routes.

All buses operating north and southbound on Crenshaw Blvd., Arlington Ave., Western Ave., Normandie Ave., and Vermont Ave., will operate via regular routes.

TRANSPORTATION DEPARTMENT

DETOUR NOTICE
NO. 90-375

LINES: 40(RTE.42) & 105

IN EFFECT: FRIDAY, JUNE 29, 1990, ONLY DURING THE HOURS FROM 4:30 P.M.
TO 7:30 P.M. OR WHEN BARRICADES ARE ERECTED.

SUBJECT: TEMPORARY DETOUR

LOCATION: MARTIN LUTHER KING JR. BLVD. & RODEO RD. AND MENLO AVE.

REASON: NELSON MANDELA MARCH

LINE 40(RTE.42)

EASTBOUND ONLY: Regular route to Crenshaw Blvd. and Leimert Blvd., then
continue via Leimert Blvd. to (R) Vernon Ave., (L) Figueroa St.
(R) Martin Luther King Blvd. and regular route.

(RTE. 42)

Regular route to Stocker St. and Angeles Vista
Blvd., then continue via Stocker St. to (R) Crenshaw Blvd.,
(L) Vernon Ave. and divert as per Line 40.

LINE 105)

EASTBOUND: Regular route to Rodeo Rd. and Rodeo Pl., then continue via
Rodeo Rd. to (R) La Brea Ave., (L) Coliseum St., (R) Santa
Rosalia Dr. - Angeles Vista Blvd., (L) Mount Vernon St. -
Vernon Ave. to Crenshaw Blvd. and regular route.

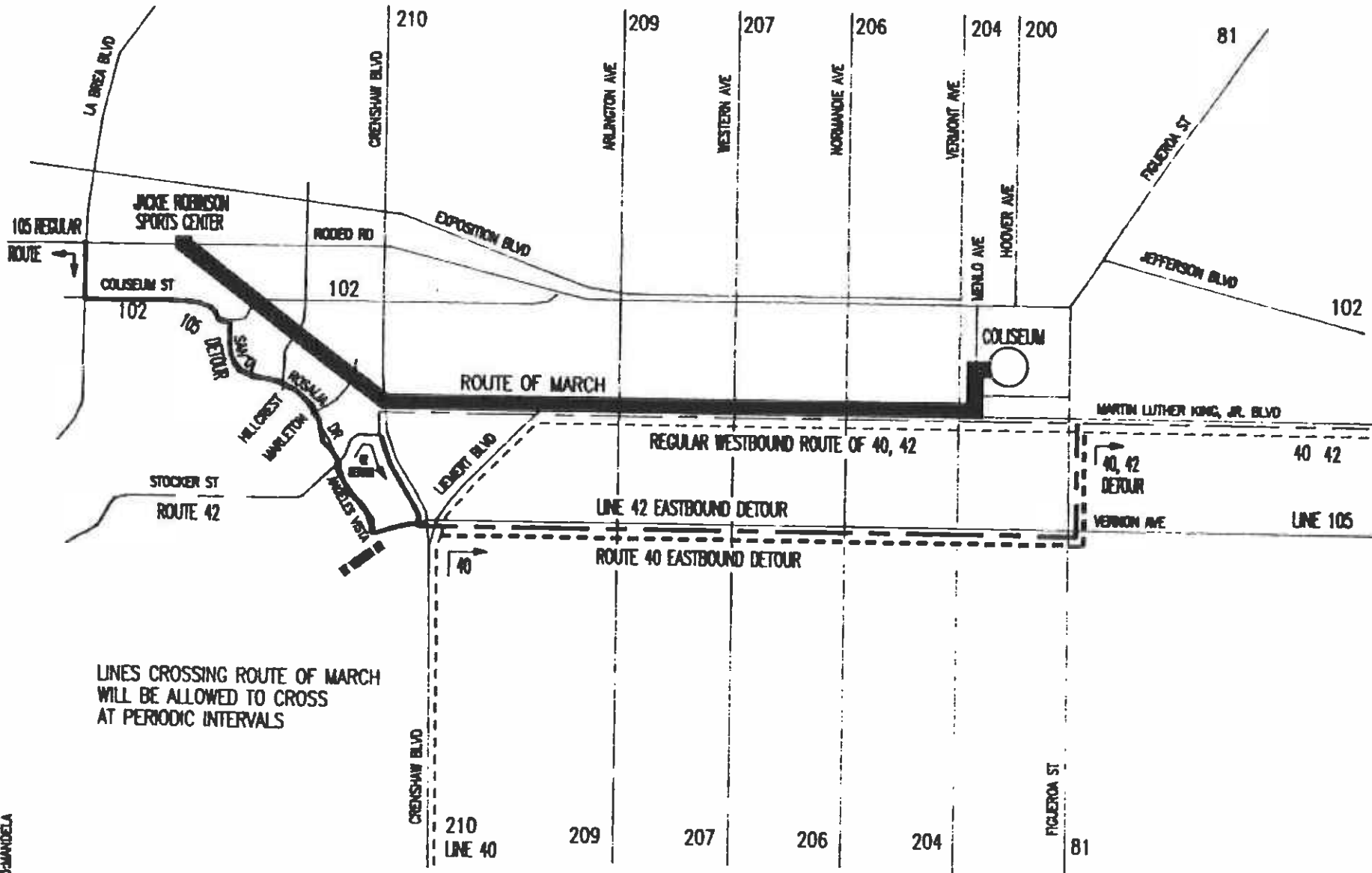
WESTBOUND: Regular route to Vernon Ave. and Leimert Blvd., then continue
via Vernon Ave., across Crenshaw Blvd. - Mount Vernon Dr.,
(R) Angeles Vista Blvd. - Santa Rosalia Dr., (L) Coliseum
St., (R) La Brea Ave., (L) Rodeo Rd. and regular route.

MAKE PASSENGER STOPS AT ALL INTERSECTIONS WHERE IT IS SAFE TO
DO SO WHILE OPERATING OVER THE DETOUR ROUTE.

Operations Control and Services
Districts 5, 7 & 8/F-81

Issued: June 26, 1990
Divisions: 5 & 18
Transp: DO:AW
24.38

BUS REROUTINGS FOR NELSON MANDELA MARCH



CONTINGENCY OPERATING PLAN

In the event that Martin Luther King, Jr. Blvd is closed in all directions, the following Detour Routes will be implemented by the Sr. TOS (VO) in charge. TOSS (VO) deployments will change as follows:

LINE 40

SOUTHBOUND:

Regular route to M L King Blvd. & Flower St., continue via M L King Blvd. to (L) Figueroa St., (R) Vernon Ave., (L) Crenshaw Blvd. and regular route.

LINE 42

SOUTHBOUND:

Regular route to M L King Blvd. & Flower St., continue via M L King Blvd. to (L) Figueroa St., (R) Vernon Ave., (R) Crenshaw Blvd., (L) Stocker St. and regular route.

TOS (VO) I. McCargo F-84B S/B Broadway & M L King Blvd.

TOS (VO) K. Jones F-85B N/B Crenshaw Blvd & 48th St.

LINE 204

NORTHBOUND:

Regular route to Vermont Ave. & 48th St., continue via Vermont Ave., (R) Vermon Ave., (L) Figueroa St., (L) Jefferson Blvd., (R) Vermont Ave. and regular route

SOUTHBOUND:

Regular route to Vermont Ave. and 36th St., continue via Vermont Ave., (L) Exposition Blvd., (R) Figueroa St., (R) Vermon Ave., (L) Vermont Ave. and regular route.

TOS (VO) T. Brissey F-83E N/B Vermont Ave. & 48th St.

TOS (VO) W. Ivory F-84C S/B Vermont Ave. & 36th St.

LINE 206

NORTHBOUND:

Regular route to Normandie Ave., & 48th St., continue via Normandie Ave., (R) Vernon Ave., (L) Figueroa St., (L) Jefferson Blvd., (R) Normandie Ave. and regular route.

SOUTHBOUND:

Regular route to Normandie Ave., & 36th St., continue via Normandie Ave., (L) Jefferson Blvd., (R) Figueroa St., (R) Vernon Ave., (L) Normandie Ave. and regular route.

TOS (VO) W. Holsberry F-84A N/B Normandie Ave. & 48th St.

TOS (VO) W. Durazo F-85E S/B Normandie Ave. & 36th St.

LINE 207

NORTHBOUND:

Regular route to Western Ave. & 48th St., continue via Western Ave., (R) Vernon Ave., (L) Figueroa St., (L) Jefferson Blvd., (R) Western Ave., and regular route.

SOUTHBOUND:

Regular route to Western Ave. & 36th St., continue via Western Ave., (L) Jefferson Blvd., (R) Figueroa St., (R) Vernon Ave., (L) Western Ave., and regular route.

TOS (VO) L. Dorsett F-82B N/B Western & 48th St.

TOS (VO) J. Villalobos F-82A S/B Western & 36th St.

LINE 209

NORTHBOUND:

Regular route to Arlington Ave. & 48th St., continue via
Arlington Ave. (R) Vernon Ave., (L) Figueroa St., (L) Jefferson
Blvd., (R) Arlington Ave. and regular route.

SOUTHBOUND:

Regular route to Arlington Ave. & 36th St., continue via
Arlington Ave. to (L) Jefferson Blvd., (R) Figueroa St., (R)
Vernon Ave., (L) Arlington Ave. and regular route.

TOS (VO) J. Moody F-81A N/B Arlington Ave. & 48th St.

TOS (VO) J. Sanders F-81D S/B Arlington Ave. & 36th St.

LINES 210 & 611

NORTHBOUND:

Regular route to Crenshaw Blvd. & 48th St., continue via Crenshaw Blvd. (L) Stocker St., (R) Santa Rosalia Dr., (L) Coliseum St., (R) La Brea Ave., (R) Jefferson Blvd., (L) Crenshaw Blvd. and regular route.

SOUTHBOUND:

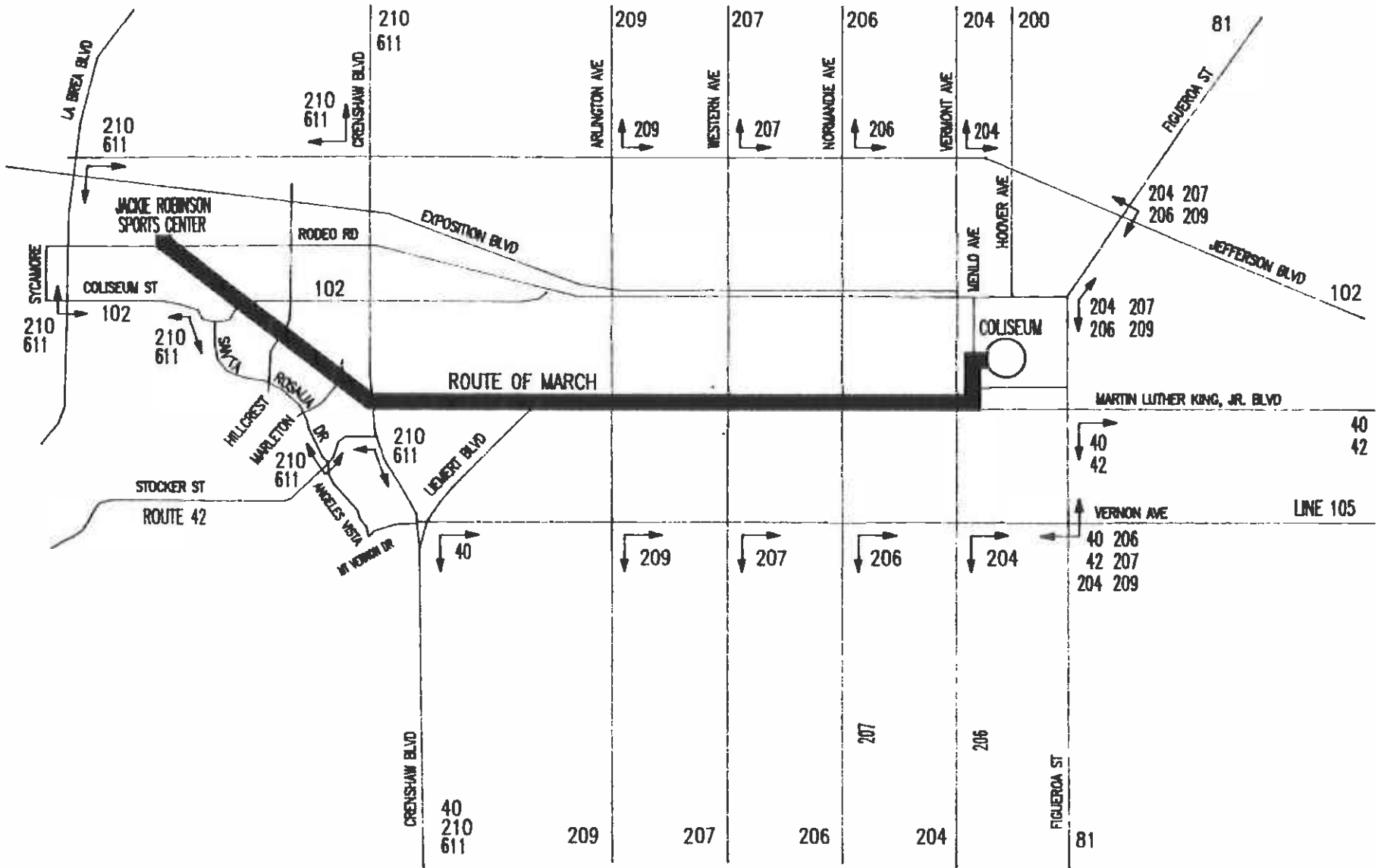
Regular route to Crenshaw Blvd. & Adams Blvd., continue via Crenshaw Blvd., (R) Jefferson Blvd., (L) La Brea Ave., (L) Coliseum St., (R) Santa Rosalia Dr., (L) Stocker St., (R) Crenshaw Blvd. and regular route.

TOS (VO) K. Jones F-85B N/B Crenshaw Blvd. & 48th St.

TOS (VO) A. Jones F-85C S/B Crenshaw Blvd. & Adams Blvd.

ALSO DIVERT LINES 42 & 105 IN BOTH DIRECTIONS.

BUS REROUTINGS FOR NELSON MANDELA MARCH CONTINGENCY PLAN



1702 TEMPORARY CHANGES LINE 600-200 SPECIAL SCHEDULE
 IN EFFECT: 6-29-90 ONLY

DAILY EX. SAT & SUN
 DIVISION NO. 3

REASON: NELSON MANDELA VISIT TO LOS ANGELES COLISEUM

PAGE 1 OF 2

ROUTE CODE: USE ROUTE CODE -200- ON ALL TRIPS DO NOT USE ROUTE CODE -600-

DESTINATION CODE: FOR ALL TRIPS TERMINATING AT FLOWER & 40TH PL USE DESTINATION
 CODE -557- IN 75, 76, 7700 SERIES BUSES, CODE -01B- IN BUSES
 WITH 7-INCH SIGNS OR CODE -1FE- IN ALL OTHER BUSES. HEADSIGN
 SHOULD READ -200 COLISEUM-.

SOUTHBOUND

P.M. CHANGES

<u>BR</u>	<u>NO</u>	<u>OUT</u>	<u>ECHO</u>	<u>ALVA</u>	<u>ALVA</u>	<u>ALVA</u>	<u>FLO</u>	
			<u>PARK</u>	<u>RADO</u>	<u>RADO</u>	<u>RADO</u>	<u>WER</u>	
			<u>MON</u>	<u>BEV</u>	<u>&</u>	<u>&</u>	<u>40TH</u>	
			<u>TANA</u>	<u>ERLY</u>	<u>6TH</u>	<u>PICO</u>	<u>PL</u>	
¢	42	357 P3	412	423	427	436	453	R2
¢	43	412 P3	427	438	442	451	508	R2
¢	44	434 P3	449	500	504	513	530	R2
¢	45	449 P3	504	515	519	528	545	R2
¢	42		534	545	549	558	614	R2
¢	43		551	600	604	611	625	R2
¢	44		606	615	619	627	641	R2
¢	45		624	633	637	645	659	R2
¢	42		650	659	703	711	725	R3
¢	43		659	708	712	720	734	R3
¢	44		720	729	733	741	755	R3
¢	45		734	743	747	755	809	R3

TEMPORARY OFF-ROUTE NOTES

R- 2-FROM FLOWER & 40TH PL. TO ECHO PARK & MONTANA -AFTER LOOP- VIA FIGUEROA ST.
 -NORTH-, R-FLOWER ST., R-EXPOSITION BLVD. HARBOR -110- FWY. -NORTH- ON-RAMP,
 HARBOR -110- FWY., R-HOLLYWOOD -101- FWY., -NORTH- TRANSITION LANE, HOLLYWOOD
 -101- FWY., R-GLENDALE BLVD.-ECHO PARK AVE. OFF-RAMP, ECHO PARK AVE., L-SUNSET
 BLVD., R-LOGAN ST. AND R-MONTANA ST. TO LAYOVER ZONE.

¢ - CHANGE IN MILEAGE

1702 TEMPORARY CHANGES LINE 600-200 SPECIAL SCHEDULE
IN EFFECT: 6-29-90 ONLY

DAILY EX. SAT & SUN
DIVISION NO. 3

REASON: NELSON MANDELA VISIT TO LOS ANGELES COLISEUM

PAGE 2 OF 2

ROUTE CODE: USE ROUTE CODE -200- ON ALL TRIPS DO NOT USE ROUTE CODE -600-

DESTINATION CODE: FOR ALL TRIPS TERMINATING AT FLOWER & 40TH PL USE DESTINATION
CODE -557- IN 75, 76, 7700 SERIES BUSES, CODE -01B- IN BUSES
WITH 7-INCH SIGNS OR CODE -1FE- IN ALL OTHER BUSES. HEADSIGN
SHOULD READ -200 COLISEUM-.

TEMPORARY OFF-ROUTE NOTES (CONT'D)

R- 3-BUS RUNS 42, 43, 44 & 45 UPON ARRIVAL FLOWER & 40TH PL. OPERATE OUT OF
OF SERVICE -BEFORE LOOP- VIA M.L. KING BLVD., L-HILL ST., R-JEFFERSON
BLVD. AND R-BROADWAY TO 36TH PLACE. (BUS STAGING AREA) REPORT TO
SUPERVISOR AND WORK AS INSTRUCTED.

WORK RUN CHANGES

<u>WORK</u> <u>RUN</u>	<u>BR</u> <u>NO</u>	<u>SIGN</u> <u>ON</u>	<u>TIME</u> <u>ON</u>	<u>NOTE</u>	<u>TIME</u> <u>OFF</u>	<u>NOTE</u>	<u>SIGN</u> <u>OFF</u>	<u>VEH.</u> <u>TIME</u>	<u>D.H.</u> <u>TRVL</u>	<u>MISC</u>	<u>WORK</u> <u>TIME</u>	<u>OVER</u> <u>TIME</u>	<u>PREM</u> <u>TIME</u>	<u>PAY</u> <u>TIME</u>
---------------------------	------------------------	--------------------------	--------------------------	-------------	---------------------------	-------------	---------------------------	----------------------------	----------------------------	-------------	----------------------------	----------------------------	----------------------------	---------------------------

ADDITIONAL NON-BIDDABLE P.M. ASSIGNMENTS

600-942	42	347	357	P3										
600-943	43	402	412	P3										
600-944	44	424	434	P3										
600-945	45	439	449	P3										

BK/group 2:mec-f6

1703 TEMPORARY CHANGES LINE 600-81
 IN EFFECT: 6-29-90 ONLY

SPECIAL SCHEDULE

DAILY EX. SAT & SUN
 DIVISION NOS. 3 & 18

REASON: NELSON MANDELA VISIT TO LOS ANGELES COLISEUM

PAGE 1 OF 4

ROUTE CODE: USE ROUTE CODE -81- ON ALL TRIPS. DO NOT USE ROUTE CODE -600-

DESTINATION CODE: FOR ALL NORTHBOUND TRIPS TERMINATING AT FIGUEROA & 38TH ST. AND SOUTHBOUND TRIPS TERMINATING AT FIGUEROA & 39TH ST. USE DESTINATION CODE -557- IN 75, 76, 7700 SERIES BUSES, CODE -01B- IN BUSES WITH 7-INCH SIGNS OR CODE -1FE- IN ALL OTHER BUSES. HEADSIGN SHOULD READ -81 COLISEUM-.

<u>NORTHBOUND</u>			<u>P.M. CHANGES</u>															
<u>BR NO</u>	<u>OUT</u>		<u>FIGU EROA ROSE CRAN</u>	<u>FIGU EROA EL SEGU</u>	<u>FIGU EROA CEN TUR</u>	<u>FIGU EROA FLOR ENCE</u>	<u>FIGU EROA VER NON</u>	<u>FIGU EROA 38TH ST.</u>	<u>FIGU EROA & ADAM</u>	<u>FIGU EROA & PICO</u>	<u>9TH OL- IVE</u>	<u>HILL & COLL EGE</u>	<u>FIGU EROA AVE 28</u>	<u>FIGU EROA AVE 43</u>	<u>FIGU EROA & YORK</u>	<u>COLO RADO FIGU EROA</u>	<u>COLO RADO EAGL DALE</u>	<u>DEP</u>
¢ 80	358	P18	408	412	420	429	438	442	447	452	457	513	519	523	533	540	548	601
¢ 81	407	P18	417	421	429	438	447	451	456	501	506	522	528	532	542	549	557	612
¢ 82	429	P18	439	443	451	500	508	512	517	522	527	541	547	551	601	607	614	625
¢ 83	445	P18	455	459	507	516	524	528	534	538	543	556	602	605	615	621	628	639
¢ 84	454	P18	504	508	516	525	533	537	542	547	552	605	611	614	624	630	637	655
¢ 31			559	603	610	617	625	629	R15									
¢ 32			610	614	621	628	636	640	R15									
¢ 33			621	625	633	639	647	651	R15									
¢ 34			633	639	646	653	701	705	R15									
¢ 35			646	650	657	704	712	716	R15									

¢ - CHANGE IN MILEAGE

1703 TEMPORARY CHANGES LINE 600-81
 IN EFFECT: 6-29-90 ONLY

SPECIAL SCHEDULE

DAILY EX. SAT & SUN
 DIVISION NOS. 3 & 18

REASON: NELSON MANDELA VISIT TO LOS ANGELES COLISEUM

PAGE 2 OF 4

ROUTE CODE: USE ROUTE CODE -81- ON ALL TRIPS. DO NOT USE ROUTE CODE -600-

DESTINATION CODE: FOR ALL NORTHBOUND TRIPS TERMINATING AT FIGUEROA & 38TH ST. AND SOUTHBOUND TRIPS TERMINATING AT FIGUEROA & 39TH ST. USE DESTINATION CODE -557- IN 75, 76, 7700 SERIES BUSES, CODE -01B- IN BUSES WITH 7-INCH SIGNS OR CODE -1FE- IN ALL OTHER BUSES. HEADSIGN SHOULD READ -81 COLISEUM-.

SOUTHBOUND

P.M. CHANGES

BR NO	OUT		EAGL DALE COLO RADO	FIGU EROA COLO RADO	FIGU EROA & YORK	FIGU EROA AVE 43	FIGU EROA AVE 28	HILL & ALP INE	HOPE & 8TH	FIGU EROA & PICO	FIGU EROA & ADAM	FIGU EROA 39TH ST.	FIGU EROA VER NON	FIGU EROA FLOR ENCE	FIGU EROA CEN TURY	FIGU EROA EL SEGU	FIGU EROA ROSE CRAN	DEP
¢ 31	349	P3	403	412	418	428	432	437	452	457	502	507	511	520	529	536	541	559
¢ 32	357	P3	411	420	426	436	440	445	500	505	510	515	519	528	537	544	549	610
¢ 33	405	P3	419	428	434	444	448	452	508	513	518	523	526	534	543	550	553	621
¢ 34	413	P3	427	436	442	452	456	501	515	520	524	529	532	540	548	554	558	633
¢ 35	421	P3	435	444	450	500	504	509	523	528	532	537	540	548	556	602	606	646
¢ 80			601	610	616	624	627	631	642	646	650	655	R16					
¢ 81			612	621	627	635	637	641	652	656	701	706	R16					
¢ 82			625	633	637	646	649	653	705	709	713	718	R16					
¢ 83			639	647	652	658	703	706	717	720	724	729	R16					
¢ 84			655	703	708	715	718	721	731	734	738	743	R16					

¢ - CHANGE IN MILEAGE

1703 TEMPORARY CHANGES LINE 600-81 SPECIAL SCHEDULE
IN EFFECT: 6-29-90 ONLY

DAILY EX. SAT & SUN
DIVISION NOS. 3 & 18

REASON: NELSON MANDELA VISIT TO LOS ANGELES COLISEUM

PAGE 3 OF 4

ROUTE CODE: USE ROUTE CODE -81- ON ALL TRIPS. DO NOT USE ROUTE CODE -600-

DESTINATION CODE: FOR ALL NORTHBOUND TRIPS TERMINATING AT FIGUEROA & 38TH ST.
AND SOUTHBOUND TRIPS TERMINATING AT FIGUEROA & 39TH ST. USE
DESTINATION CODE -557- IN 75, 76, 7700 SERIES BUSES, CODE
-01B- IN BUSES WITH 7-INCH SIGNS OR CODE -1FE- IN ALL OTHER
BUSES. HEADSIGN SHOULD READ -81 COLISEUM-.

TEMPORARY OFF-ROUTE NOTES

R-15-UPON ARRIVAL FIGUEROA & 38TH STS., MAKE LAST STOP AT 38TH ST., THEN VIA
FIGUEROA ST., R-FLOWER ST., R-JEFFERSON BLVD. AND R-BROADWAY TO 38TH ST.
REPORT TO SUPERVISOR AND WORK AS INSTRUCTED.

R-16-UPON ARRIVAL FIGUEROA & 39TH STS., THEN VIA FIGUEROA ST., L-MARTIN LUTHER
KING BLVD., L-BROADWAY TO 36TH PLACE. REPORT TO SUPERVISOR AND WORK AS
INSTRUCTED.

WORK RUN CHANGES

<u>WORK</u> <u>RUN</u>	<u>BR</u> <u>NO</u>	<u>SIGN</u> <u>ON</u>	<u>TIME</u> <u>ON</u>	<u>NOTE</u>	<u>TIME</u> <u>OFF</u>	<u>NOTE</u>	<u>SIGN</u> <u>OFF</u>	<u>VEH.</u> <u>TIME</u>	<u>D.H.</u> <u>TRVL</u>	<u>MISC</u>	<u>WORK</u> <u>TIME</u>	<u>OVER</u> <u>TIME</u>	<u>PREM</u> <u>TIME</u>	<u>PAY</u> <u>TIME</u>
---------------------------	------------------------	--------------------------	--------------------------	-------------	---------------------------	-------------	---------------------------	----------------------------	----------------------------	-------------	----------------------------	----------------------------	----------------------------	---------------------------

DIVISION 3

ADDITIONAL NON-BIDDABLE P.M. ASSIGNMENTS

600-931	31	339	349	P3	SUBJECT TO SUPERVISOR'S ORDERS								
600-932	32	347	357	P3	SUBJECT TO SUPERVISOR'S ORDERS								
600-933	33	355	405	P3	SUBJECT TO SUPERVISOR'S ORDERS								
600-934	34	403	413	P3	SUBJECT TO SUPERVISOR'S ORDERS								
600-935	35	411	421	P3	SUBJECT TO SUPERVISOR'S ORDERS								

1703 TEMPORARY CHANGES LINE 600-81 SPECIAL SCHEDULE
IN EFFECT: 6-29-90 ONLY

DAILY EX. SAT & SUN
DIVISION NOS. 3 & 18

REASON: NELSON MANDELA VISIT TO LOS ANGELES COLISEUM

PAGE 4 OF 4

ROUTE CODE: USE ROUTE CODE -81- ON ALL TRIPS. DO NOT USE ROUTE CODE -600-

DESTINATION CODE: FOR ALL NORTHBOUND TRIPS TERMINATING AT FIGUEROA & 38TH ST.
AND SOUTHBOUND TRIPS TERMINATING AT FIGUEROA & 39TH ST. USE
DESTINATION CODE -557- IN 75, 76, 7700 SERIES BUSES, CODE
-01B- IN BUSES WITH 7-INCH SIGNS OR CODE -IFE- IN ALL OTHER
BUSES. HEADSIGN SHOULD READ -81 COLISEUM-.

WORK RUN CHANGES

<u>WORK</u> <u>RUN</u>	<u>BR</u> <u>NO</u>	<u>SIGN</u> <u>ON</u>	<u>TIME</u> <u>ON</u>	<u>NOTE</u>	<u>TIME</u> <u>OFF</u>	<u>NOTE</u>	<u>SIGN</u> <u>OFF</u>	<u>VEH.</u> <u>TIME</u>	<u>D.H.</u> <u>TRVL</u>	<u>MISC</u>	<u>WORK</u> <u>TIME</u>	<u>OVER</u> <u>TIME</u>	<u>PREM</u> <u>TIME</u>	<u>PAY</u> <u>TIME</u>
---------------------------	------------------------	--------------------------	--------------------------	-------------	---------------------------	-------------	---------------------------	----------------------------	----------------------------	-------------	----------------------------	----------------------------	----------------------------	---------------------------

DIVISION 18

ADDITIONAL NON-BIDDABLE P.M. ASSIGNMENTS

600-980	80	348	358	P18										
600-981	81	357	407	P18										
600-982	82	419	429	P18										
600-983	83	435	445	P18										
600-984	84	444	454	P18										

GW/group 2:mec-f6

1704 TEMPORARY CHANGES LINE 600-102 SPECIAL SCHEDULE
 IN EFFECT: 6-29-90 ONLY

DAILY EX. SAT & SUN
 DIVISION NO. 3

REASON: NELSON MANDELA VISIT TO LOS ANGELES COLISEUM

PAGE 1 OF 3

ROUTE CODE: USE ROUTE CODE -102- AT ALL TIMES. DO NOT USE ROUTE CODE -600-

DESTINATION CODE: FOR ALL EASTBOUND TRIPS TERMINATING AT FIGUEROA & EXPOSITION AND SOUTHBOUND TRIPS TERMINATING AT JEFFERSON & HOOVER, USE DESTINATION CODE -557- IN 75, 76, 7700 SERIES BUSES, CODE -01B- IN BUSES WITH 7-INCH SIGNS OR CODE -1FE- IN ALL OTHER BUSES. HEADSIGN SHOULD READ -102 COLISEUM-.

EASTBOUND

P.M. CHANGES

BR NO	OUT		SYCA MORE COLI SEUM	RODEO LA BREA ARR LVE	CREN SHAW COLI SEUM	EXPS TION WES TERN	EXPS TION VER MONT	FIGU EROA EXPS TION	JEFF ERSN BROA DWAY	41ST ST. AS-COT	37TH ST. SOTO	DEP
¢ 36	320	P3	350		358	404	409		415	424	429	445
¢ 37	330	P3	400		408	414	419		425	434	439	455
¢ 38	350	P3	420		428	434	439		445	454	459	510
¢ 39	415	P3	445		453	459	504		510	519	524	535
¢ 40	440	P3	510		518	524	529		535	544	549	605
¢ 41	450	P3	520		528	534	539		545	554	559	615
¢ 36			540		548	554	559		605	614	619	640
¢ 37			550		558	604	609		615	624	629	650
¢ 38			615		621	626	630		636	644	649	700
¢ 39			625		631	636	640		646	654		710
¢ 40			650		656	701	705		711	719		730
¢ 41			655		701	706	710		716	724		740
¢ 36			712	713	720	725	730	734	738	R10		
¢ 37			722	723	730	735	740	744	748	R10		
¢ 38			732	733	740	745	750	754	758	R10		

¢ - CHANGE IN MILEAGE

1704 TEMPORARY CHANGES LINE 600-102 SPECIAL SCHEDULE
 IN EFFECT: 6-29-90 ONLY

DAILY EX. SAT & SUN
 DIVISION NO. 3

REASON: NELSON MANDELA VISIT TO LOS ANGELES COLISEUM

PAGE 2 OF 3

ROUTE CODE: USE ROUTE CODE -102- AT ALL TIMES. DO NOT USE ROUTE CODE -600-

DESTINATION CODE: FOR ALL EASTBOUND TRIPS TERMINATING AT FIGUEROA & EXPOSITION AND SOUTHBOUND TRIPS TERMINATING AT JEFFERSON & HOOVER, USE DESTINATION CODE -557- IN 75, 76, 7700 SERIES BUSES, CODE -01B- IN BUSES WITH 7-INCH SIGNS OR CODE -1FE- IN ALL OTHER BUSES. HEADSIGN SHOULD READ -102 COLISEUM-.

WESTBOUND

P.M. CHANGES

<u>BR NO</u>	<u>37TH & SOTO</u>	<u>41ST ST. AS-COT</u>	<u>JEFF ERSN BROA DWAY</u>	<u>EXPS TION HOO VER</u>	<u>EXPS TION VER MONT</u>	<u>EXPS TION WES TERN</u>	<u>CREN SHAW COLI SEUM</u>	<u>SYCA MORE COLI SEUM</u>	<u>DEP</u>
¢ 36	445	452	503		509	513	520	526	540
¢ 37	455	502	513		519	523	530	536	550
¢ 38	510	517	528		534	538	545	551	615
¢ 39	535	542	553		559	603	610	616	625
¢ 40	605	612	619		624	628	634	639	650
¢ 41	615	622	629		634	638	644	649	655
¢ 36	640	646	653		658	702	708	712	712
¢ 37	650	656	703		708	712	718	722	722
¢ 38	700	706	713		718	722	728	732	732
¢ 39		710	717	722	R11				
¢ 40		725	732	737	R11				
¢ 41		740	747	752	R11				

¢ - CHANGE IN MILEAGE

1704 TEMPORARY CHANGES LINE 600-102 SPECIAL SCHEDULE
IN EFFECT: 6-29-90 ONLY

DAILY EX. SAT & SUN
DIVISION NO. 3

REASON: NELSON MANDELA VISIT TO LOS ANGELES COLISEUM

PAGE 3 OF 3

ROUTE CODE: USE ROUTE CODE -102- AT ALL TIMES. DO NOT USE ROUTE CODE -600-

DESTINATION CODE: FOR ALL EASTBOUND TRIPS TERMINATING AT FIGUEROA & EXPOSITION AND SOUTHBOUND TRIPS TERMINATING AT JEFFERSON & HOOVER, USE DESTINATION CODE -557- IN 75, 76, 7700 SERIES BUSES, CODE -01B- IN BUSES WITH 7-INCH SIGNS OR CODE -1FE- IN ALL OTHER BUSES. HEADSIGN SHOULD READ -102 COLISEUM-.

TEMPORARY OFF-ROUTE NOTES

R-10-UPON ARRIVAL AT FIGUEROA & EXPOSITION OPERATE -OUT OF SERVICE- VIA FIGUEROA ST., R-JEFFERSON BLVD., R-BROADWAY PL., R-39TH ST. AND R-BROADWAY TO 36TH PLACE. REPORT TO SUPERVISOR AND WORK AS INSTRUCTED.

R-11-UPON ARRIVAL AT EXPOSTITION & HOOVER OPERATE -OUT OF SERVICE- VIA EXPOSITION BLVD., R-VERMONT AVE., R-JEFFERSON BLVD., R-BROADWAY PLACE, R-39TH ST. AND R-BROADWAY TO 36TH PL. REPORT TO SUPERVISOR AND WORK AS INSTRUCTED.

WORK RUN CHANGES

<u>WORK RUN</u>	<u>BR NO</u>	<u>SIGN ON</u>	<u>TIME ON</u>	<u>NOTE</u>	<u>TIME OFF</u>	<u>NOTE OFF</u>	<u>SIGN OFF</u>	<u>VEH. TIME</u>	<u>D.H. TRVL</u>	<u>MISC</u>	<u>WORK TIME</u>	<u>OVER TIME</u>	<u>PREM TIME</u>	<u>PAY TIME</u>
-----------------	--------------	----------------	----------------	-------------	-----------------	-----------------	-----------------	------------------	------------------	-------------	------------------	------------------	------------------	-----------------

ADDITIONAL NON-BIDDABLE P.M. ASSIGNMENTS

600-936	36	310	320	P3	SUBJECT TO SUPERVISOR'S ORDERS								
600-937	37	320	330	P3	SUBJECT TO SUPERVISOR'S ORDERS								
600-938	38	340	350	P3	SUBJECT TO SUPERVISOR'S ORDERS								
600-939	39	405	415	P3	SUBJECT TO SUPERVISOR'S ORDERS								
600-940	40	430	440	P3	SUBJECT TO SUPERVISOR'S ORDERS								
600-941	41	440	450	P3	SUBJECT TO SUPERVISOR'S ORDERS								

IL/group 2:mec-f6

1707 TEMPORARY CHANGES LINE 600-40
 IN EFFECT: 6-29-90 ONLY

SCHEDULE NO. 89213

DAILY EX. SAT & SUN
 DIVISION NO. 18

REASON: NELSON MANDELA VISIT TO LOS ANGELES COLISEUM

PAGE 1 OF 4

ROUTE CODE: USE ROUTE CODE -40- ON ALL TRIPS. DO NOT USE ROUTE CODE -600-.

DESTINATION CODE: FOR ALL TRIPS TERMINATING AT KING BLVD. & FIGUEROA ST. USE
 DESTINATION CODE -557- IN 75, 76, 7700 SERIES BUSES, CODE
 -01B- IN BUSES WITH 7-INCH SIGNS OR CODE -1FE- IN ALL OTHER
 BUSES. HEADSIGN SHOULD READ -40 COLISEUM-

NORTHBOUND

P.M. CHANGES

BR NO	OUT		S.BAY TRAN SIT CNTR	HAW THRN MAN BCH	HAW THRN BDWY L.O.	HAW THRN BROD WAY	LA BREA ARBR VITA	CREN SHAW FLOR ENCE	CREN SHAW & 54TH	VER NON WES TERN	VER NON VER MONT	KING BLVD FIGU EROA	BDWY 36TH HOLD AREA	BROD WAY WASH NGTN	BROD WAY TEM PLE	HILL ST. LAY OVER	DEP
¢ 90	348	P18	408	416		426	439	453	501	510	515			529	547	R6	
¢ 91	358	P18	418	426		436	449	503	511	520	525			538	556	R6	
¢ 92	408	P18	428	436		446	459	513	520	529	534			546	602	R6	
¢ 93	417	P18	437	445		455	508	522	529	538	542			552	607	R23	
¢ 94	427	P18	447	455		505	518	532	539	548	552			602	616	R23	
¢ 95	437	P18	457	505		515	528	542	549	558	602			612		629	648
¢ 96	455	P18	515	523		533	546	559	606	615	619			629		645	659
¢ 97	507	P18	527	535		545	558	611	618	627	631			641		657	719
¢ 98	529	P18	549	557		607	619	631	638	646	650			659		714	731
¢ 99	544	P18	604	612		622	634	646	653	701	705			714		729	745

¢ - CHANGE IN MILEAGE

1707 TEMPORARY CHANGES LINE 600-40
 IN EFFECT: 6-29-90 ONLY

SCHEDULE NO. 89213

DAILY EX. SAT & SUN
 DIVISION NO. 18

REASON: NELSON MANDELA VISIT TO LOS ANGELES COLISEUM

PAGE 2 OF 4

ROUTE CODE: USE ROUTE CODE -40- ON ALL TRIPS. DO NOT USE ROUTE CODE -600-.

DESTINATION CODE: FOR ALL TRIPS TERMINATING AT KING BLVD. & FIGUEROA ST. USE
 DESTINATION CODE -557- IN 75, 76, 7700 SERIES BUSES, CODE
 -01B- IN BUSES WITH 7-INCH SIGNS OR CODE -1FE- IN ALL OTHER
 BUSES. HEADSIGN SHOULD READ -40 COLISEUM-

NORTHBOUND

P.M. CHANGES

BR NO	OUT	S.BAY TRAN SIT CNTR	HAW THRN MAN BCH	HAW THRN BDWY L.O.	HAW THRN BROD WAY	LA BREA ARBR VITA	CREN SHAW FLOR ENCE	CREN SHAW & 54TH	VER NON WES TERN	VER NON VER MONT	KING BLVD FIGU EROA	BDWY 36TH HOLD AREA	BROD WAY WASH NGTN	BROD WAY TEM PLE	HILL ST. LAY OVER	DEP
¢ 90						650	702	709	717	721	724N	727	SUBJECT TO SUPERVISOR'S ORDERS			
¢ 91						702	714	721	729	733	736N	739	SUBJECT TO SUPERVISOR'S ORDERS			
¢ 92						714	726	733	741	745	748N	751	SUBJECT TO SUPERVISOR'S ORDERS			
¢ 93				710		720	732	739	746	750	753N	756	SUBJECT TO SUPERVISOR'S ORDERS			
¢ 94				725		735	747	754	801	805	808N	811	SUBJECT TO SUPERVISOR'S ORDERS			

N-BR'S 90, 91, 92, 93 & 94

MAKE LAST PASSENGER STOP AT KING & FIGUEROA, THEN OFF-ROUTE TO BROADWAY & 36TH HOLDING AREA VIA KING
 BLVD., L-HILL ST., R-JEFFERSON BLVD. AND R-BROADWAY TO 36TH PL. REPORT TO SUPERVISOR AND WORK AS
 INSTRUCTED.

TEMPORARY OFF-ROUTE

R-23-FROM BROADWAY & TEMPLE TO HAWTHORNE & BROADWAY LAYOVER VIA BROADWAY, R-101 FWY. -NORTH- ON-RAMP,
 R-HARBOR -110- FWY. -SAN PEDRO- TRANSITION LANE, HARBOR -110- FWY., R-IMPERIAL HWY. OFF-RAMP,
 GRAND AVE., R-IMPERIAL HWY., L-CRENSHAW BLVD., R-EL SEGUNDO BLVD. AND R-HAWTHORNE BLVD. TO LAYOVER
 ZONE SOUTH OF THE RAILROAD CROSSING ON HAWTHORNE BLVD.

1707 TEMPORARY CHANGES LINE 600-40 SCHEDULE NO. 89213
IN EFFECT: 6-29-90 ONLY

DAILY EX. SAT & SUN
DIVISION NO. 18

REASON: NELSON MANDELA VISIT TO LOS ANGELES COLISEUM

PAGE 3 OF 4

ROUTE CODE: USE ROUTE CODE -40- ON ALL TRIPS. DO NOT USE ROUTE CODE -600-.

DESTINATION CODE: FOR ALL TRIPS TERMINATING AT KING BLVD. & FIGUEROA ST. USE
DESTINATION CODE -557- IN 75, 76, 7700 SERIES BUSES, CODE
-01B- IN BUSES WITH 7-INCH SIGNS OR CODE -1FE- IN ALL OTHER
BUSES. HEADSIGN SHOULD READ -40 COLISEUM-

SOUTHBOUND

BR NO	OUT	HILL ST. LAY OVER	BROD WAY & 1ST	BROD WAY WASH NGTN	KING BLVD. FIGU EROA	42ND & KANSAS HOLDING AREA	
¢ 85	430	P18				510	SUBJECT TO SUPERVISOR'S ORDERS
¢ 86	430	P18				510	SUBJECT TO SUPERVISOR'S ORDERS
¢ 87	430	P18				510	SUBJECT TO SUPERVISOR'S ORDERS
¢ 88	430	P18				510	SUBJECT TO SUPERVISOR'S ORDERS
¢ 89	430	P18				510	SUBJECT TO SUPERVISOR'S ORDERS
¢ 95			648	652	704	712N 715	SUBJECT TO SUPERVISOR'S ORDERS
¢ 96			659	703	715	723N 726	SUBJECT TO SUPERVISOR'S ORDERS
¢ 97			719	723	735	743N 746	SUBJECT TO SUPERVISOR'S ORDERS
¢ 98			731	735	747	755N 758	SUBJECT TO SUPERVISOR'S ORDERS
¢ 99			745	749	801	809N 812	SUBJECT TO SUPERVISOR'S ORDERS

N-BR'S 95, 96, 97, 98 & 99

MAKE LAST PASSENGER STOP AT KING & FIGUEROA, THEN OFF-ROUTE TO 42ND & KANSAS HOLDING AREA VIA KING
BLVD., L-HOOVER ST., R-VERNON AVE., R-VERMONT AVE. AND L-42ND ST. TO KANSAS AVE. REPORT TO SUPERVISOR
AND WORK AS INSTRUCTED.

1707 TEMPORARY CHANGES LINE 600-40
IN EFFECT: 6-29-90 ONLY

SCHEDULE NO. 89213

DAILY EX. SAT & SUN
DIVISION NO. 18

REASON: NELSON MANDELA VISIT TO LOS ANGELES COLISEUM

PAGE 4 OF 4

ROUTE CODE: USE ROUTE CODE -40- ON ALL TRIPS. DO NOT USE ROUTE CODE -600-.

DESTINATION CODE: FOR ALL TRIPS TERMINATING AT KING BLVD. & FIGUEROA ST. USE
DESTINATION CODE -557- IN 75, 76, 7700 SERIES BUSES, CODE
-01B- IN BUSES WITH 7-INCH SIGNS OR CODE -IFE- IN ALL OTHER
BUSES. HEADSIGN SHOULD READ -40 COLISEUM-

BUSES OUT OF DIVISION 18 TO

42ND & KANSAS HOLDING AREA

VIA L-GRIFFITH ST., R-FIGUEROA ST., L-190TH ST., R-HARBOR -110- FWY. -NORTH- ON-RAMP, HARBOR
-110- FWY., R-VERNON AVE. OFF-RAMP, L-VERNON AVE., R-VERMONT AVE. AND L-42ND ST. TO KANSAS
AVE. REPORT TO SUPERVISOR AND WORK AS INSTRUCTED.

WORK RUN CHANGES

<u>WORK</u> <u>RUN</u>	<u>BR</u> <u>NO</u>	<u>SIGN</u> <u>ON</u>	<u>TIME</u> <u>ON</u>	<u>NOTE</u>	<u>TIME</u> <u>OFF</u>	<u>NOTE</u>	<u>SIGN</u> <u>OFF</u>	<u>VEH.</u> <u>TIME</u>	<u>D.H.</u> <u>TRVL</u>	<u>MISC</u>	<u>WORK</u> <u>TIME</u>	<u>OVER</u> <u>TIME</u>	<u>PREM</u> <u>TIME</u>	<u>PAY</u> <u>TIME</u>
---------------------------	------------------------	--------------------------	--------------------------	-------------	---------------------------	-------------	---------------------------	----------------------------	----------------------------	-------------	----------------------------	----------------------------	----------------------------	---------------------------

ADDITIONAL NON-BIDDABLE P.M. ASSIGNMENTS

600-985	85	420	430	P18	SUBJECT TO SUPERVISOR'S ORDERS									
600-986	86	420	430	P18	SUBJECT TO SUPERVISOR'S ORDERS									
600-987	87	420	430	P18	SUBJECT TO SUPERVISOR'S ORDERS									
600-988	88	420	430	P18	SUBJECT TO SUPERVISOR'S ORDERS									
600-989	89	420	430	P18	SUBJECT TO SUPERVISOR'S ORDERS									
600-990	90	338	348	P18	SUBJECT TO SUPERVISOR'S ORDERS									
600-991	91	348	358	P18	SUBJECT TO SUPERVISOR'S ORDERS									
600-992	92	358	408	P18	SUBJECT TO SUPERVISOR'S ORDERS									
600-993	93	407	417	P18	SUBJECT TO SUPERVISOR'S ORDERS									
600-994	94	417	427	P18	SUBJECT TO SUPERVISOR'S ORDERS									
600-995	95	427	437	P18	SUBJECT TO SUPERVISOR'S ORDERS									
600-996	96	445	455	P18	SUBJECT TO SUPERVISOR'S ORDERS									
600-997	97	457	507	P18	SUBJECT TO SUPERVISOR'S ORDERS									
600-998	98	519	529	P18	SUBJECT TO SUPERVISOR'S ORDERS									
600-999	99	534	544	P18	SUBJECT TO SUPERVISOR'S ORDERS									

PS/group 2:mec-f6

1716 TEMPORARY CHANGES LINE 600-204 SCHEDULE NO. 89141
IN EFFECT: 6-29-90 ONLY

DAILY EX. SAT & SUN
DIVISION NO. 5

REASON: NELSON MANDELA VISIT TO LOS ANGELES COLISEUM

ROUTE CODE: USE ROUTE CODE -204- ON ALL TRIPS. DO NOT USE ROUTE CODE -600-

NORTHBOUND

P.M. CHANGES

<u>BR</u> <u>NO</u>	<u>OUT</u>		<u>42ND & KANSAS HOLDING AREA</u>	
¢ 60	430	P5	445	SUBJECT TO SUPERVISOR'S ORDERS
¢ 61	430	P5	445	SUBJECT TO SUPERVISOR'S ORDERS
¢ 62	430	P5	445	SUBJECT TO SUPERVISOR'S ORDERS
¢ 63	430	P5	445	SUBJECT TO SUPERVISOR'S ORDERS
¢ 64	430	P5	445	SUBJECT TO SUPERVISOR'S ORDERS

TEMPORARY PULL-OUT
VIA R-54TH ST., L-VERMONT AVE. AND L-42ND ST. TO KANSAS AVE. REPORT TO
SUPERVISOR AND WORK AS INSTRUCTED.

¢ - CHANGE IN MILEAGE

WORK RUN CHANGES

<u>WORK</u> <u>RUN</u>	<u>BR</u> <u>NO</u>	<u>SIGN</u> <u>ON</u>	<u>TIME</u> <u>ON</u>	<u>NOTE</u>	<u>TIME</u> <u>OFF</u>	<u>NOTE</u>	<u>SIGN</u> <u>OFF</u>	<u>VEH.</u> <u>TIME</u>	<u>D.H.</u> <u>TRVL</u>	<u>MISC</u>	<u>WORK</u> <u>TIME</u>	<u>OVER</u> <u>TIME</u>	<u>PREM</u> <u>TIME</u>	<u>PAY</u> <u>TIME</u>
---------------------------	------------------------	--------------------------	--------------------------	-------------	---------------------------	-------------	---------------------------	----------------------------	----------------------------	-------------	----------------------------	----------------------------	----------------------------	---------------------------

ADDITIONAL NON-BIDDABLE P.M. ASSIGNMENTS

600-960	60	420	430	P5	SUBJECT TO SUPERVISOR'S ORDERS								
600-961	61	420	430	P5	SUBJECT TO SUPERVISOR'S ORDERS								
600-962	62	420	430	P5	SUBJECT TO SUPERVISOR'S ORDERS								
600-963	63	420	430	P5	SUBJECT TO SUPERVISOR'S ORDERS								
600-964	64	420	430	P5	SUBJECT TO SUPERVISOR'S ORDERS								

DAC/group 3:mec-f6