



**Metro**

Los Angeles County  
Metropolitan Transportation Authority

One Gateway Plaza  
Los Angeles, CA 90012-2952

213.922.2000 Tel  
metro.net

February 23, 2021

TO: DISTRIBUTION

FROM: *for* SAMEH GHALY   
SR. EXECUTIVE OFFICER/PROJECT MANAGEMENT

SUBJECT: CRENSHAW/LAX TRANSIT PROJECT  
JANUARY 2021 MONTHLY PROJECT STATUS REPORT

Enclosed herewith is the Monthly Project Status Report for the Crenshaw/LAX Transit Project. This report contains the Los Angeles County Metropolitan Transportation Authority's (LACMTA) representation of the Crenshaw/LAX Transit Project status for the period ending January 29, 2021.

If you have any questions regarding this report or its supporting information, please contact Brittany Zhuang, Interim Director, Project Control at (213) 922-7354.

SG: ts

Enclosure



# **CRENSHAW/LAX TRANSIT PROJECT**

## **MONTHLY PROJECT STATUS REPORT**

THE PREPARATION OF THIS DOCUMENT HAS BEEN FINANCED IN PART THROUGH A GRANT FROM THE U. S. DEPARTMENT OF TRANSPORTATION, FEDERAL TRANSIT ADMINISTRATION (FTA).

JANUARY 2021

## TABLE OF CONTENTS

	Page No.
Project Overview.....	1-6
Executive Summary .....	7-12
Project Update	
• Project Schedule	
Project Summary Schedule .....	13
Progress Summary .....	14
Planned vs. Actual Progress.....	14
Key Milestones Six-Month Look Ahead .....	15
Major Equipment Delivery Status .....	16
Critical Path .....	17
Project Schedule Contingency Drawdown.....	18
Risk Management Narrative .....	19
• Project Cost	
Project Cost Status & Analysis .....	20-21
Cost Contingency Drawdown and Analysis .....	22
Summary of Contract Modifications .....	23
Disadvantaged Business Enterprise (DBE).....	24
Project Labor Agreement.....	25
Financial/Grant .....	26
Project Staffing .....	27-28
Real Estate.....	29
Quality Assurance .....	29
Environmental .....	30
Construction and Community Relations .....	31
Creative Services .....	31
Safety and Security .....	32
Chronology of Events .....	33-34

## **PROJECT OVERVIEW**

### **Project Background**

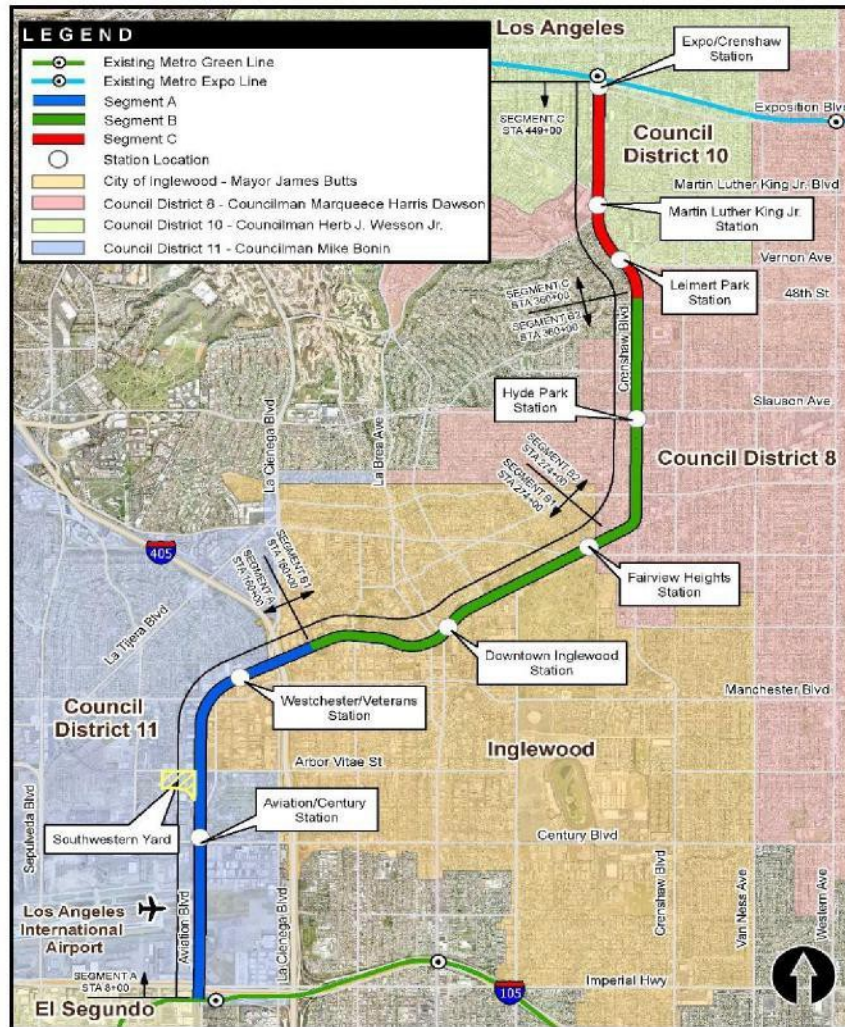
The Crenshaw/LAX Transit Project is a north/south light rail line that serves the cities of Los Angeles, Inglewood, Hawthorne and El Segundo as well as portions of unincorporated Los Angeles County. The alignment extends 8.5 miles, from the intersection of Crenshaw and Exposition Boulevards to a connection with the Metro Green Line south of the Aviation/LAX Station. The project provides major connections with the Los Angeles International Airport (LAX) as well as links to the C Line (Green), the E Line (Expo) and countywide bus network.

Two additional stations, Leimert Park and Westchester/Veterans were funded by the City of Los Angeles and by Metro and were approved to be part of the project by the Metro Board in May 2013. The Metro Board in July 2014 and again in May 2015 approved a revision to the project alignment to include accommodations to the alignment at 96<sup>th</sup> Street to not preclude a future light rail Metro Rail station being developed as part of the Airport Metro Connector (AMC) project. The accommodations included shifting the ultimate track configuration to the west side of the alignment to confine the revised trackwork on Metro Right-of-Way to mitigate potential cost exposure. These accommodations are not funded by the Crenshaw/LAX Transit Project but are paid for by the AMC project.

The alignment is comprised of a double-tracked rail line consisting of sections of at-grade in-street, at-grade within railroad right-of-way, aerial, and below-grade guideway sections, eight stations, park and ride facilities at two locations, utilities, landscaping, roadway improvements required by the project and a maintenance & storage facility (Southwestern Yard).

The Project configuration is based on years of planning and environmental work that is reflected in the following milestones:

- Major Investment Study – 2003
- Metro Board approval of Alternative Analysis – December 2009
- Initiation of Preliminary Engineering – September 2010
- Metro Board certification of Final EIS/EIR – September 2011
- FTA issuance of Record of Decision – December 2011
- TIFIA and TIGER II Grants approved September 2012



## Major Procurements

### Contract C0990 Crenshaw/LAX Advanced Utility Relocations

The design of several early utility relocations was advanced sufficiently into final design to allow for bidding of critical early utility relocations. This contract includes relocating three (3) existing duct banks that feed various NAVAIDS on the south airfield complex. New duct bank infrastructure was built by Metro with the fiber replacement work and cut-over by FAA/LAWA. These duct banks contain fiber lines and power lines which belong to both LAWA and FAA. Since the track alignment is below grade at these crossings, the duct banks were relocated in advance to allow for the construction of the track alignment. In addition, other wet utilities along the Harbor Branch and Crenshaw Boulevard segments of the corridor that can be relocated in advance were included as part of this contract.

Design-Build Contract C0991 Southwestern Yard

The Board-adopted 2009 Long Range Transportation Plan (LRTP) for Los Angeles County envisioned one new central Light Rail Transit (LRT) Maintenance facility to be used by all projects. Since the LRTP adoption, substantial progress on light rail system planning and development, including more accurate vehicle assignments, cost estimates, and functional requirements, has led Metro to conclude that two new LRT yards, an Eastern Yard and a Southwestern Yard, are necessary. This contract constructed the Southwestern Yard which consolidated maintenance facility requirements for this project as well as the operating Metro Green Line, proposed South Bay Metro Green Line Extension and proposed Metro Green Line to LAX. Southwestern Yard is complete and maintained by Metro Operations.

Contract C0992 Crenshaw/LAX Concrete Ties and Assembly Items

Metro added a contract for procuring owner-supplied equipment for the Design-Build Contract C0988 Crenshaw/LAX Transit Corridor Contractor. The equipment within the contract scope of work includes concrete ties and assembly items. Procurement completed and delivered to the project.

Contract C0992A Crenshaw/LAX Rail and Bumping Posts Procurement

Metro added a contract for rebidding the procurement of running rail and bumping posts for the Design-Build Contract C0988 Crenshaw/LAX Transit Corridor Contractor including a bumping post for the Design-Build Contract C0991 Southwestern Yard. Procurement completed and delivered to the project.

Design-Build Contract C0988 Crenshaw/LAX Transit Corridor

This is the largest project contract which completes final design and construction of the infrastructure required along the corridor alignment. The structures required to be constructed are eight stations (at-grade, elevated and underground), grade separations including flyover structures, cut and cover trenching, tunneling and two park-n-ride facilities. The scope of work includes all the necessary systems work including train control, traction power supply substations and distribution, overhead catenary, communications, and systems tie-in to the existing C Line (Green). The project delivery method for this contract was design-build utilizing a two-step best value procurement approach with submittal of qualification statements through an RFQ process, prequalification of qualified proposers followed by release of an RFP soliciting technical and price proposals with an option at Metro's discretion for best and final offers (BAFO).

Light Rail Vehicles

The Board approved exercising Option 1 of Contract P3010 with KinkiSharyo International (KI) to provide light rail vehicles (LRV) for the Crenshaw/LAX project. The total number of vehicles in the Option is 28 which include 20 LRVs for the Crenshaw/LAX project and two additional cars for spares. The remaining six cars are for replacement of Metro's current fleet. The first Option 1 P3010 car was delivered in May 2017. The final P3010 car (22nd car) for Crenshaw/LAX project was delivered in September 2017, completing the Option delivery for the Crenshaw

Project. All twenty-two Crenshaw cars are currently in revenue service on the C Line (Green) and A Line (Blue). In coordination with the mainline contractor, vehicle software field verification started at the C Line (Green) tie-in, Segment A, and will continue for the remaining Segments (B1, B2 & C), as the areas are available for testing.

#### Rail Operations Center (ROC)

The existing functional operations at the ROC has expanded to accommodate the central control functions associated with five new rail lines including Crenshaw/LAX Project. The Project is contributing \$3.5 million towards this expansion for Crenshaw/LAX Project.

ROC installation and testing was mostly completed in February 2020. SCADA software development is in final stages of coordination and completion pending field testing. Preparations are being made to start SIT-2 testing as soon as the CTS-Fiber backbone system is connected, tested by mainline contractor (Completed), relevant SIT-1 testing, and cross connects are complete by sub-system (including test reports). SIT-2 testing of completed systems, by location, could start 45 days prior to SIT-1 scheduled completion.

#### Fare Collection

A notice-to-proceed was issued on January 30, 2018 to the existing Metro Universal Fare System (UFS) contractor, Cubic Transportation Systems, to procure UFS equipment for the Crenshaw/LAX Project eight stations. The equipment has been manufactured and is stored locally until the Crenshaw/LAX Project stations are ready for installation to commence. UFS contractor and mainline contractor are continuing to coordinate the details required for preparation, access, and installation at each station. Field installation started at underground stations and is continuing field coordination with the mainline contractor for the remaining stations. Installation of Ticket Vending Machines (TVM) and other fare collection equipment started in the underground stations.

#### **Program Management**

The WSCC contract is being managed by a team of Metro and consultant personnel jointly located at the Integrated Project Management Office (IPMO). Mott MacDonald provides engineering and design support services while Stantec, Inc., provides construction management support services. An overview of staffing is provided under the Staffing section of this report. The on-site program management team is also supported by Metro Headquarters resources to include, but not limited to, engineering, risk management, environmental, quality management, operations, and creative services departments. In addition, a Project Management Support Services (PMSS) consultant is providing resources to supplement staff.

#### Project Schedule:

Metro issued in September 2018 a non-compensable unilateral change order to WSCC to extend their substantial completion milestone to December 11, 2019. Project continues to fall behind the dates reset in the non-compensable unilateral change order. There is still considerable work left to be completed by WSCC. This includes rework, prerequisite construction work to allow follow-on subcontractors to complete systems installation, local field acceptance tests and systems integration tests. Field issues are being addressed but continue to impact any potential mitigation and recovery plan.



WSSC in their December 2020 monthly schedule update reflects a WSSC Substantial Completion forecast date of May 25, 2021. This Milestone date represents exclusion of activities that do not impact the completion of WSSC's System Integration Testing (SIT-1), such as street restoration and artwork. Metro is concerned that the current schedule forecast from WSSC continues to reflect slower than planned progress every month without effective mitigation efforts made by WSSC. Metro is also concerned that WSSC is not applying enough needed resources and field force to complete the remaining prerequisite work including distributed permanent power, control conduits and wiring, system installations and testing for timely completion.

Project Budget:

In May 2013, the Metro Board approved a Motion that amended the fiscal year 2014 Proposed Metro Budget to include funding for an underground station at Leimert Park Village and an at-grade station at Westchester/Veterans as part of the baseline project. This Motion added \$135 million to the LOP budget which included \$80 million in uncommitted fiscal year 2014 funding and \$55 million from the City of Los Angeles. Metro reached agreement with the City of Los Angeles to cover the incremental cost of the stations above the \$80 million identified in fiscal year 2014 funding which the Metro Board approved in May 2013.

With Metro Board approval on June 27, 2013, the additional \$135 million is included in the sources of funds chart as well as the additional \$160.1 million for the increased cost of the base work. All recommendations were approved by the Metro Board on June 27, 2013 except that change order authority was maintained at \$500,000. This board action amended the life of project budget to \$2,058 million.

The Metro Board approved on May 28, 2015, an increase in the amount of funding that the Crenshaw/LAX Project is contributing toward the total cost of the Southwestern Yard Project. An additional \$10.8 million is required to be funded by drawdown from the Unallocated Contingency Current Budget SCC 90 and added to the Southwestern Yard Current Budget SCC 30. The current budget includes the 49% cost allocation share that the project is responsible for paying which includes funding of the design and construction for the Southwestern Yard. This amount is revised to \$150.2 million out of a new total of \$307.2 million adopted by the Metro Board.

Due to the extension of the Project's Substantial Completion date to December 2020, the Metro Board of Directors action on May 28, 2020 increased the Life-of-Project Budget by \$90 million. The additional funding is required to provide funding for professional services that support the completion of the Project. The required support includes Metro staff and professional services consultants who provide various services to assist in the management and oversight of the Project.

Construction and Community Relations:

The Construction and Community Relations team is tasked with promoting the Project and performing public outreach within the community to keep stakeholders informed of construction activities occurring along the Project alignment. To facilitate the communication, community leadership councils have been formed which represent geographic-based constituent groups along the Project.

The Project is also engaged in social media outreach and various marketing and advertising efforts designed to keep the public informed and excited about the Project. These efforts are aimed at promoting businesses that are affected by construction

System Integration:

The Project's integration of three separate lines, each possessing distinct system technologies, presents significant challenges for both the Project and Metro. The Project is coordinating the systems interface design, construction, testing, and commissioning while the Agency maintains revenue service on the operating lines. The Crenshaw Project tie-in with the Metro Rail C Line (Green) was substantially completed and tested by August 2020. However, there are a few elements remaining to be finalized prior to the start of operation.

Metro project team is coordinating progress with operations, mainline contractor and ROC management team to ensure all requirements, including procedures, testing and test reports are in place to support upcoming System Integration Testing Phase 2 (SIT-2). Coordination weekly meetings are established to address and prepare for SIT-2 testing including procedures, test plan and staffing requirements.

Rail Activation:

The Project and Metro Operations recognize the extensive planning required in preparation for rail activation of the new regional light rail service the Project will enable through the south Los Angeles area. Associated detailed rail activation planning and scheduling efforts are underway. Metro Operations have completed Southwestern Yard (Division 16) rail activation and Metro Operations continues to provide support to the mainline contractor testing efforts as needed, including vehicles with operators.

## EXECUTIVE SUMMARY

The Project has achieved 98.1% completion based on earned value measurements for design and construction.

The following is an overview of current design and construction activities.

### Design Status

#### Design - Build Contract C0988 (Mainline Contractor) –

Walsh-Shea Corridor Constructors (WSCC) continues design and engineering in support of construction, installation, testing and commissioning. The design/engineering support during construction is identified as a concern and potential risk in the project due to extensive repair, rework and field issues resolutions required (for more details see Key Concerns 3 and 4, affecting all areas of construction, electrical and mechanical installation, system's work and testing). Metro and WSCC have added design staff to support coordination and resolution of engineering issues including submittals, studies, NCR's, Etc.

### Construction Status

#### Design - Build Contract C0988 Mainline Contractor –

WSCC continues construction along all areas of the alignment. The four at-grade stations, underground structures (UG1, UG3 & UG4) and all six bridge superstructures including the aerial structure concrete placements are mostly completed and started acceptance process and continuing with finishes, systems installations and testing. The three underground stations remain at various levels of completion with emphasis on electrical, mechanical, systems, finish work inside the stations, entrance structures and plaza finishes. WSCC is continuing with system's Local Field Acceptance Testing (LFAT) at various locations on the project. The WSCC commissioning agent continue the coordination and planning process for the underground structures, stations and aerial station. The required test/commissioning procedures have been submitted, reviewed and approved by Metro. WSCC/EEI commissioning agent is continuing day-by-day planning and start-up of tunnel booster fans, ejection pumps, HVAC and various fans at the underground stations including UG1, UG3 and UG4.

Trackwork and OCS/OCR are mostly completed, including the plinth repair work and rail damage repair. New issues with the track plinth are under evaluation and repair. Above ground segments are energized and under track allocation control. Wayside train control installation is mostly complete along the alignment including in the underground stations and tunnels. System installation, conduits and wiring continues in the stations for traction power (completed), train control and various communication systems including LFAT's. WSCC and Metro continue to coordinate with utility companies (power, water, gas and communication) at various locations including temporary power removal.

- Finish work continues at all stations including tiles, ceiling panels, tiles, lighting, landscaping, end devices (Speakers, cameras, smoke detectors, etc.) and plaza work. Ceiling panels completion is pending verification of remaining above the ceiling seismic bracing, and other remaining items.
- All TPSS sites and Auxiliary power sites are energized.

- Elevator installations, including roofing are complete at all stations. Pre-commissioning verification checklist is continuing.
- Wiring and terminations of electrical systems are continuing at Leimert Park Station, Martin Luther King Jr. Station and Expo Station
- Testing of equipment and electrical systems continues including distributing permanent power to MCC's to various parts of the stations and equipment and turned over to commissioning agent.
- All booster fans installation is mostly complete with wiring and termination in the underground structures including permanent distributed power availability, and control wiring. Start-up of booster fans at UG1 and UG4 has been performed and UG3 booster fans are continuing.
- Underground emergency ventilation fans (EVF) installation is mostly complete. WSCC continues with power and controls conduits and wiring at all underground stations, started as prerequisites are completed and permanent distributed power becomes available to bump and startup each unit from local control. Testing from CIC have not started.
- Continue wiring and termination from auxiliary power sites to cross passages, radio equipment, sump pumps, ventilation, and other systems in the cross passages and underground structures, continues as prerequisites are completed and permanent distributed power becomes available to start-up and test.
- Sump pumps and other related equipment are being replaced and prepared for testing.
- Radio system installation including radiax, coaxial cable, antenna and equipment installation is continuing in the underground stations and other underground structures and continue with testing of radio signals.
- System integration tests, Phase 1, including running vehicles for clearance test, live wire, train control was completed included the Arbor Vitae Street crossing. Segment A2 has been turned over to P3010 contractor, which is continuing onboard vehicle verification testing.
- WSCC continues MSE Wall-202L repair mitigation measures. Jet grouting is mostly completed and preparing for start of restoration work (AC cap, ballast, track, train control and OCS).
- The fiber optic innerduct and fiber optic for CTS are installed and tested along the alignment. Fujitsu equipment have been energized tested and connected to fibers at C Line (Green) and the E Line (Expo). Metro is coordinating efforts to complete cross-connect jumpers of various systems to CTS ring in preparation for Metro's SIT-2 pre-testing.

### **Cost and Schedule Summary**

Metro Board of Directors action in May 2020 increased the Life-of-Project Budget by \$90 million. The increase is required due to the forecast delay of Substantial Completion to December 2020. The additional funding is required to provide funding for professional services that support the completion of the Project. Detailed cost information is provided later in this report.

WSCC in their December 2020 monthly schedule update reflects a WSCC Substantial Completion forecast date of May 25, 2021. Metro is concerned that the current schedule forecast from WSCC, continues to slip and reflect slower than planned progress every month without effective mitigation efforts made by WSCC. Potential mitigation proposed by WSCC such as increased work crews, double shift and overtime, has not been fully implemented by WSCC. There is still considerable work left to be completed by WSCC.

This includes rework, prerequisite construction work to allow follow-on subcontractors to complete systems installation, local field acceptance tests and systems integration tests.

**WSCC Schedule Metrics – Mainline Contractor**

	<b>Original Contract Date</b>	<b>Time Extension (CD)</b>	<b>Current Contract Schedule</b>	<b>Forecast (Contractor)</b>	<b>Variance CD</b>
NTP	09/10/13				
Substantial Completion including SIT-1	09/08/18	459	12/11/19	5/25/21	-536 days

To date, the design and construction changes for WSCC related to base scope represent approximately 14.4% of the contract value. Metro has issued credit change orders which has reduced the percentage of changes per contract value. Metro anticipates future changes initiated by Metro will mostly be “credit” changes.

**Key Management Concerns**

No. 1: WSCC Construction Schedule Progress

Status/Action

WSCC has submitted a December 2020 Monthly Schedule Update which reflects a WSCC Substantial Completion (SIT-1) forecast date of May 25, 2021. Metro is concerned that the current schedule forecast from WSCC, continues to slip and reflect slower than planned progress every month without effective mitigation efforts made by WSCC. Potential mitigation proposed by WSCC such as increased work crews, double shift and overtime, has not been fully implemented by WSCC. There is still considerable work left to be completed by WSCC. This includes rework and prerequisite construction work to allow follow-on subcontractors to complete systems installation, local field acceptance tests and systems integration tests.

No 2: Remaining Contingency is less than 2% of Total Project Budget.

Status/Action

Metro monthly monitors and reports on the drawdown of contingency. In January 2021, there was a contingency replenishment of \$1,621,945 which increased the remaining contingency to \$26.5 million. The remaining contingency is 1.26% of total project current forecast and 21.32% of total project cost-to-go.

No. 3: WSCC Design/Engineering Support during Construction, Installation and Testing

Status/Action

There are engineering/design support activities during construction (test procedures, test reports, submittals, re-submittals, requests for information, studies, NCR’s, power coordination studies and deviation requests) are impacting the field work progress. The impact is creating potential delays to construction, systems installation, testing and commissioning. A full time HNTB (Engineer of Record) engineer is assigned to the Project to help manage and expedite issue resolution. New and unresolved existing issues requiring design support and resolution are continuing to affect schedule progress in all areas of the project including systems communication (EMP, SCADA, etc.).

**No. 4: WSCC Required Rework and Impact to Follow-on Subcontractors**

Status/Action

Several areas of work along the alignment could not be completed due to damaged, incomplete and missing components. This has impacted and slowed down progress on various stations systems work such as radio, fire alarm systems and testing. There are still new issues with field installation of conduits, layouts, and coring, identified, which are impacting planned follow-on work by subcontractors in the underground stations. WSCC's prerequisite work needs to be completed expeditiously to allow follow-on subcontractor work to be expedited to minimize effect of slow schedule progress. Other items such as issues with EMP screens, MSE Wall-202L, delayed cladding procurement, etc. are continuing to effect schedule progress.

**No. 5: 3<sup>rd</sup> Party Coordination and Impact on follow up activities.**

Status/Action

Multiple areas of work along the alignment require close coordination with 3<sup>rd</sup> parties. Metro is working with WSCC to resolve any issues as quickly as possible. WSCC needs to mitigate any issues to avoid impact to train testing and other Project testing activities. Issues related to permanent power energization have been resolved and utility company equipment has been energized. Coordination efforts are underway to remove the temporary power from underground stations.

**No. 6: COVID-19 Impact on progress of the Project**

Status/Action

Construction continues as an essential service under guidelines set forth by the City of Los Angeles. Safety protocols are required and monitored. Preventive measures have been implemented and impact of COVID-19 on project progress is being monitored by WSCC and Metro. WSCC continues to submit notifications of potential impacts to work. Each impact claim will be assessed consistent with Contract terms. Project experienced a surge in Dec-2020 and Jan-2021 with over 30 cases reported. Number of COVID-19 cases on the project have increased after holidays but is expected to trend down.

**No. 7: MSE-Wall 202 Settlement and Movement**

Status/Action

Construction activities in the area of MSE Wall 202L movement were suspended pending detail analysis of the cause of movement and mitigation measures. WSCC and their engineer of record have evaluated the results of their investigation and have developed a repair plan, including proposed mitigation measures, which have been accepted by Metro engineering. The train control and vehicle testing were impacted by MSE Wall-202L movement which impacted any vehicle movement near the wall. Two light rail vehicles were moved past the wall on July 7, 2020. This allows train testing to continue as needed north of the impacted area during the wall repair and restoration work. The repair work (jet grouting) is nearing completion and preparation to start the restoration activities.

**No. 8: EMP Screen Display Omissions by WSCC**

Status/Action

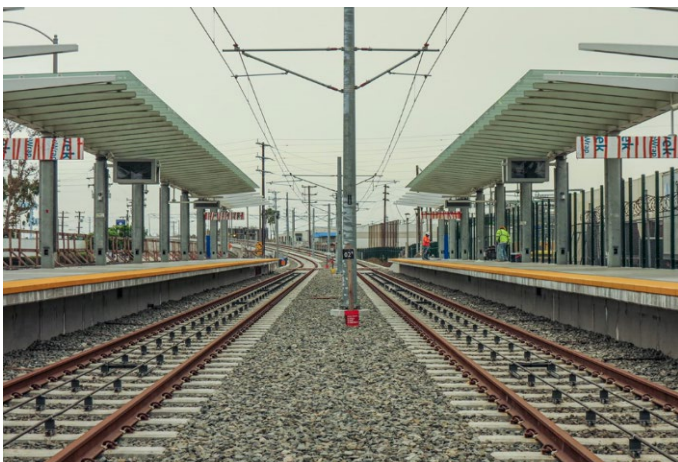
Several key components of EMP screen display of emergency hatch alarm and ventilation scenarios were omitted by WSCC. This is a safety issue and needs to be addressed prior to systems operations. Metro and WSCC are working together to resolve the issue and to minimize schedule impact and address any safety concerns. Coordination efforts and development of required EMP screens are proceeding and issues are being resolved expeditiously by red lining the drawings. Programming process has commenced by WSCC's subcontractor. Additional elements of EMP have been identified for a better ventilation sequence. Metro and WSCC/B&C have resolved EMP screens.

**No. 9: LFAT and SIT-1 Progress Rate of Testing**

Status/Action

Remaining required WSCC testing effort including LFAT, Commissioning and SIT-1 is significant. The actual production rate of successful testing does not support WSCC's Monthly Schedule Update. Remaining required WSCC testing effort including LFAT, Commissioning and SIT-1 is significant. The actual production rate of successful testing does not support WSCC's Monthly Schedule Update. If the current rate of testing failures continues, WSCC will not meet their planned completion dates. The actual production rate of testing needs to increase significantly to support WSCC's Monthly Schedule Update and the latest excel production plan.

**PROJECT CONSTRUCTION PHOTOS**



AVIATION/CENTURY- Bike rack installation at the Aviation Station plaza.



Vernon Station – Troubleshooting limit switches.

# Crenshaw/LAX Transit Project Monthly Project Status Report

January 2021



MLK STATION – Anchoring and installing ticket vending machines at the Free Area.



UG4 – Stagnant water condition at south portal NB track.



La Brea Station - Field site walk with WSCC QC & Metro CM team at La Brea OP SB track STA 202+00 checking track conditions on guideway (looking south).



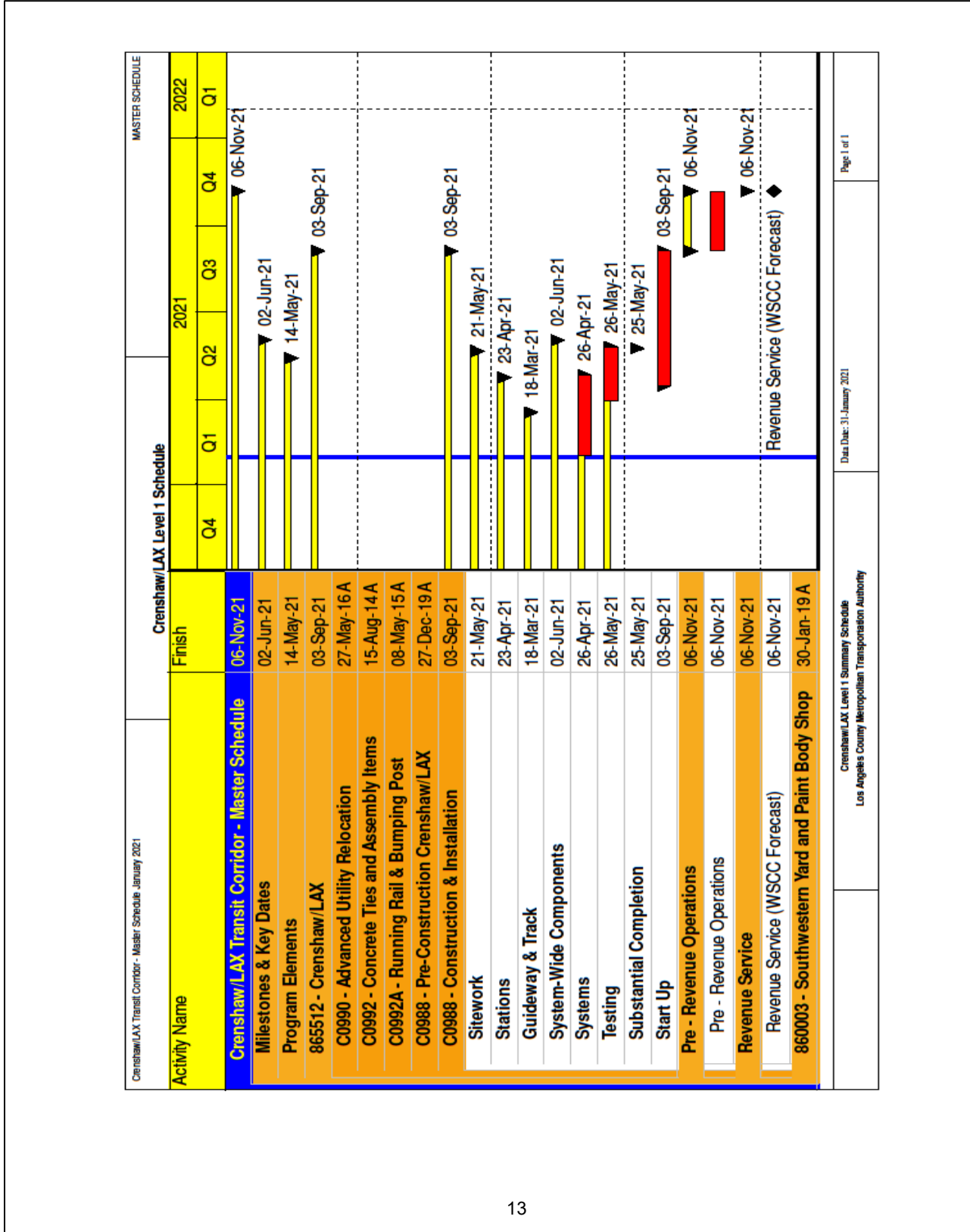
EXPO STATION – Continue LED light fixture installation at the platform ceiling grid.



PROJECT UPDATE

**PROJECT SCHEDULE**

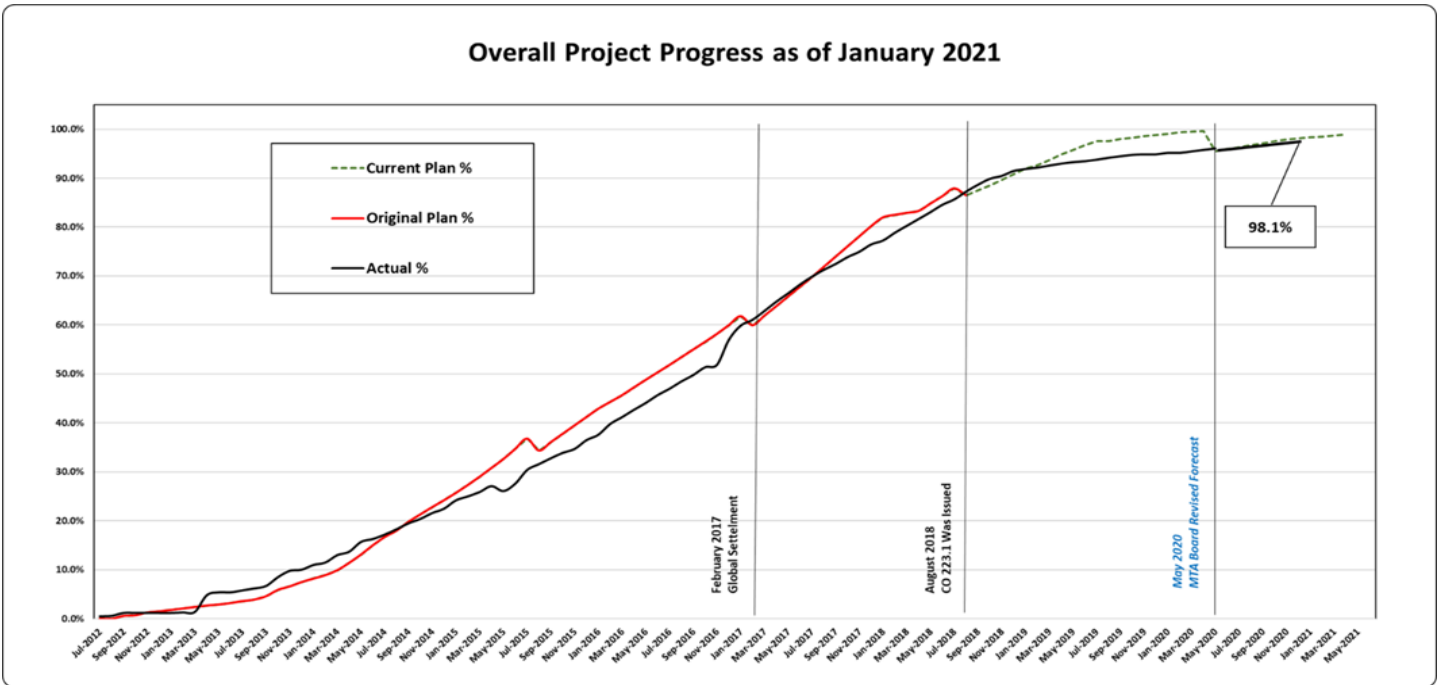
Project Summary Schedule – reflects “Current Forecast”



### Progress Summary

	Status	Change from Last Period	Comment
Current Revenue Service:	5/24/2021	N/A	
Forecast Revenue Service:	11/6/2021	-36 days	Forecast by Contractor
<b>Final Design Progress:</b>			
Contract C0988	99.8%	0.0%	Design Completed. Design Services During Construction Continues
Contract C0990	100%	None	Design Completed
Contract C0991	100%	None	Design Completed
Contract C0992	100%	None	Design Completed
Contract C0992A	100%	None	Design Completed
<b>Construction Contracts Progress:</b>			
Contract C0988	97.6%	0.7%	Behind Schedule
Contract C0990	100%	None	Completed
Contract C0991	100%	None	Completed
Contract C0992	100%	None	Completed
Contract C0992A	100%	None	Completed

### Planned vs. Actual Progress



**Key Milestones Six Months Look-Ahead**

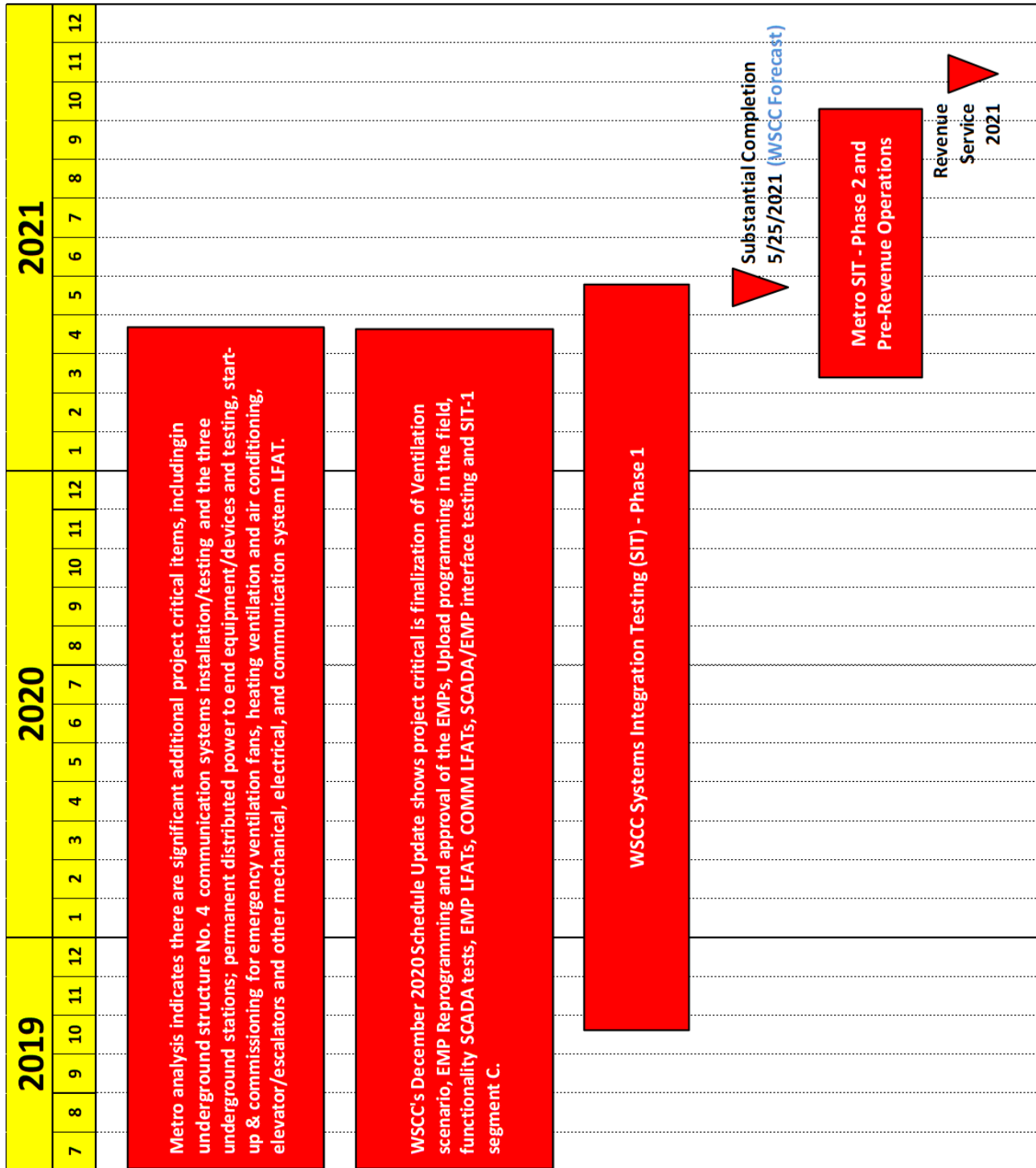
	Milestone Date	Jan-21	Feb-21	Mar-21	Apr-21	May-21	Jun-21
UG3 Ventilation LFAT/Commissioning (Tunnel Booster Fans)	1/21/21A	◡					
TPSS-09, LFAT MLK Energize MCC *	02/15/21		◡				
TPSS-10, LFAT Expo Energize MCC *	02/15/21		◡				
Ventilation Equipment - Leimert Station Installation/Testing*	02/19/21		◡				
Ventilation Equipment - Expo. Station Installation/Testing*	02/26/21		◡				
Commission Century/Aviation Station Equipment	03/01/21			◡			
Ventilation Equipment - MLK Station Installation/Testing *	03/05/21			◡			
P3010 Contractor Start Segment B Vehicle Field Verification Testing	03/30/21			◊			
Radio Room Ready LFAT - UG1, UG3, UG4	04/02/21				◡		
Metro Start SIT-2 (45 days overlap with SIT-1)	04/11/21				◆		
WSCC Systems Substantial Completion (SIT-1)	05/25/21					◡	
WSCC Substantial Completion (Non-Systems)	06/02/21						◡

MTA Staff    
 MTA Board Action    
 FTA (Federal Transit Administration)    
 Utility Company  
 Other Agencies    
 C0991 D/B Contractor    
 Design Consultant    
 C0988 D/B Contractor  
 "A" following date is actual and completed    
 \* New Date

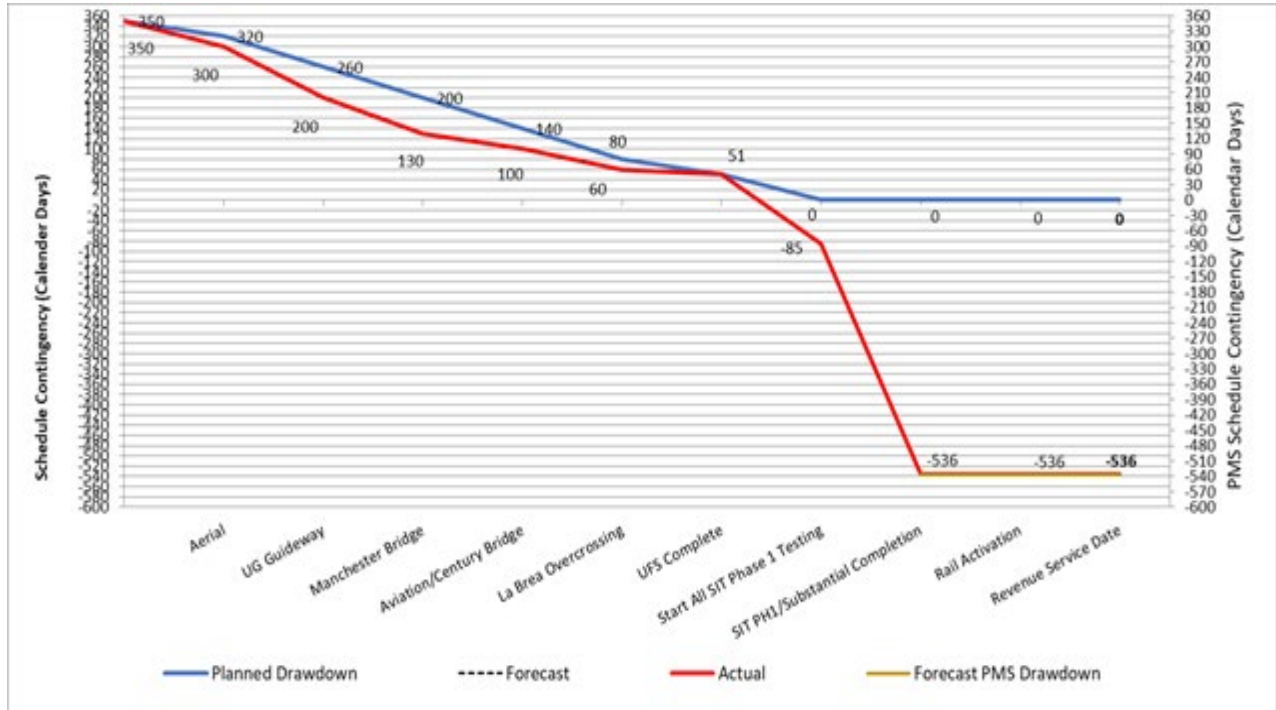
### Major Equipment Delivery Status

<i>Metro Supplied Equipment</i>			
<b>Equipment</b>	<b>Initial Procurement</b>	<b>Scheduled Delivery</b>	<b>Scheduled Installation</b>
LRT Vehicles	(NTP) 8/20/12 A	Option 1 9/1/17 A	N/A
Ticket Vending Machines and Equipment	1/30/18 A	2/28/19 A (Warehoused)	TBD (Prior to RSD)
<i>Mainline Contractor Equipment Delivery Requirements</i>			
<b>Activity Name</b>	<b>Early Finish</b>	<b>Need Date</b>	
Fabricate, Signage Expo Station *	March 2021	September 2019	
Fabricate, Signage MLK Station *	March 2021	September 2019	
Fabricate, Signage Vernon Station *	March 2021	September 2019	
Fabricate Supervisory Kiosk @ Expo Station	April 2021	September 2019	
Fabricate Station Finish Cladding Expo Station*	April 2021	September 2019	
Fabricate Station Finish Cladding MLK Station*	April 2021	September 2019	
Fabricate Station Finish Cladding Vernon Station*	April 2021	September 2019	
Spare Parts	TBD	December 2020	
*Requires schedule mitigation by Mainline Contractor			

**CRITICAL PATH** - reflects "Current WSCC Forecast"



**Project Schedule Contingency Drawdown**



Metro issued in August 2018 a non-compensable unilateral change order to WSCC to extend their substantial completion milestone to December 11, 2019. Thus, performance measurement is now tracked against this new date.

**RISK MANAGEMENT NARRATIVE**

**Summary of Risks**

Within this reporting period one risk was closed. No new risk was added. There is a total of fifteen (15) risks remaining to be managed in the next reporting period.

Of the fifteen (15) risks, nine (9) are scored as high (10 to 20 risk rating), five (5) as medium (4 to 9 risk rating), and one (1) as low (Less than 4 risk rating).

**Top Risks:** The table below shows the top project risks:

Risk ID	SCC	Risk Description	Risk Rating
359	80	Extended Overhead or productivity loss claims exposure not covered by cost impacts in individual risks.	20
124	50	Main Line testing prior to pre-revenue operations may take longer than expected, resulting in increased Main Line Metro and Consultant costs and potential delay to Substantial Completion.	16
362	50	Schedule activities that are critical to completion (Trackwork, OCR/OCS, TPSS and Auxiliary Power Energization, Emergency Fans, Train Control wiring/testing and Communications equipment installation/wiring/testing, Fire Alarm including Damaged Tunnel Conduits).	16
379	20	LFAT, Procedures and Testing Schedule and Rate of Testing Progress	15
380	20	SIT-1, Procedures and Testing Schedule and Rate of Testing Progress	15
373	20	WSCC Damaged, Repair, Rework and Incomplete work including tunnel conduits (Complete), Track plinths, Communication (Fire Alarm System).	13
355	50	Issues with long lead delivery or improper planning for integration, testing and startup of Communication systems.	12
376	20	WSCC Damaged, Repair, & Rework - MSE Wall 202 movement and settlement	10
377	20	COVID-19 (Coronavirus) – Project Impact	10

**Newly Identified Risks:** There are no new items added to the risk register.

**Closed Risks:** One risk is closed in this period.

**Risk Score Changes:** One risk score is changed this period.

**Actions in Next Reporting Cycle**

Continuous efforts in Risk Management will be made through the following actions:

Update the project risk register.

**PROJECT COST**  
**Project Cost Analysis**

SCC CODE	DESCRIPTION	ORIGINAL BUDGET	CURRENT BUDGET		COMMITMENTS		EXPENDITURES		CURRENT FORECAST		FORECAST VARIANCE
			PERIOD	TO DATE	PERIOD	TO DATE	PERIOD	TO DATE	PERIOD	TO DATE	
10	GUIDEWAYS	471,335,000	-	417,788,306	(0)	416,241,886	86,860	414,767,023	-	416,241,887	(1,546,419)
20	STATIONS	153,906,000	-	308,067,041	33,030	306,205,648	1,282,795	299,380,964	33,030	307,846,170	(220,870)
30	SUPPORT FACILITIES SOUTHWEST YARD	66,673,000	-	66,919,206	-	66,899,628	(18,574)	66,146,382	-	66,896,347	(22,860)
40	SITWORK(SPECIAL CONDITIONS)	235,576,000	-	404,953,359	(1,672,322)	404,161,282	1,582,761	376,463,269	(1,648,322)	406,309,886	1,366,527
50	SYSTEMS	125,132,000	-	175,073,936	0	174,643,187	782,452	160,285,095	-	175,389,467	315,531
<b>CONSTRUCTION SUBTOTAL (10-50)</b>		<b>1,052,622,000</b>	<b>-</b>	<b>1,372,801,849</b>	<b>(1,639,292)</b>	<b>1,368,151,631</b>	<b>3,716,293</b>	<b>1,317,042,733</b>	<b>(1,615,292)</b>	<b>1,372,683,757</b>	<b>(118,091)</b>
60	RIGHT-OF-WAY	132,294,000	-	137,726,295	-	139,884,181	156,552	137,750,854	-	139,884,281	2,157,987
70	LRT VEHICLES	87,780,000	-	83,571,544	-	82,158,074	-	81,837,755	-	83,571,544	-
80	PROFESSIONAL SERVICES	273,147,000	-	501,844,251	14,364,291	465,241,827	2,221,169	434,766,816	(6,653)	499,392,520	(2,451,731)
<b>SUBTOTAL (10-80)</b>		<b>1,545,843,000</b>	<b>-</b>	<b>2,095,943,938</b>	<b>12,724,998</b>	<b>2,055,435,714</b>	<b>6,094,014</b>	<b>1,971,398,158</b>	<b>(1,621,945)</b>	<b>2,095,532,102</b>	<b>(411,836)</b>
90	UNALLOCATED CONTINGENCY	177,157,000	-	26,056,062	-	-	-	-	1,621,945	26,467,898	411,836
100	FINANCE CHARGES	-	-	-	-	-	-	-	-	-	-
<b>TOTAL PROJECT 865512 (10-90)</b>		<b>1,723,000,000</b>	<b>-</b>	<b>2,122,000,000</b>	<b>12,724,998</b>	<b>2,055,435,714</b>	<b>6,094,014</b>	<b>1,971,398,158</b>	<b>(0)</b>	<b>2,122,000,000</b>	<b>(0)</b>
ENVIRONMENTAL/PLANNING - 405512		5,526,150	-	5,526,150	-	5,526,150	-	5,526,150	-	5,526,150	-
ENVIRONMENTAL/PLANNING - 465512		20,473,850	-	20,473,850	-	20,022,881	-	20,022,881	-	20,473,850	-
<b>TOTAL PROJECTS 405512 &amp; 465512 (ENV / PLAN'G)</b>		<b>26,000,000</b>	<b>-</b>	<b>26,000,000</b>	<b>-</b>	<b>25,549,031</b>	<b>-</b>	<b>25,549,031</b>	<b>-</b>	<b>26,000,000</b>	<b>-</b>
<b>TOTAL PROJECTS 405512, 465512 &amp; 865512</b>		<b>1,749,000,000</b>	<b>-</b>	<b>2,148,000,000</b>	<b>12,724,998</b>	<b>2,080,984,745</b>	<b>6,094,014</b>	<b>1,996,947,189</b>	<b>(0)</b>	<b>2,148,000,000</b>	<b>(0)</b>

1. Expenditures are Cumulative through January 29, 2021.

2. Expenditures exclude \$6.6 million for State Board of Equalization (SBOE) decision to tax LRT Vehicle deliveries since August 2016. Metro is appealing the decision but paid tax so as not to incur any late fees.

The project numbers 405512, 465512, 865512 and 860003 are internal to Metro and are used to differentiate between environmental/planning and construction.

**Original Budget:**

The Board in October 2011 established the Life-of-Project (LOP) Original Budget of \$1,749 million for the Crenshaw/LAX Transit Project.

**Current Budget:**

In May 2020, the Board amended the LOP budget by \$90 million, increasing the Total LOP Current Budget to \$2,148 million. This action was necessary due to the extension of the Project's Substantial Completion date to December 2020 and revenue service to commence in 2021. The LOP budget was amended to provide additional funding for professional services that are required to support the completion of the Project. The required support includes Metro staff and professional services consultants who provide services to assist in the management and oversight of the Project.

**Commitments:**

Commitments increased by \$12.7 million this period to \$2,080.9 million which represents 96.9% of the current budget. The total increase is related to professional services.

**Expenditures:**

Expenditures increased by \$6.1 million this period to \$1,996.9 million which represents 93.0% of the current budget. The total increase is for costs associated with design-build Contract C0988 Crenshaw/LAX Transit Corridor and professional services.



**Current Forecast**

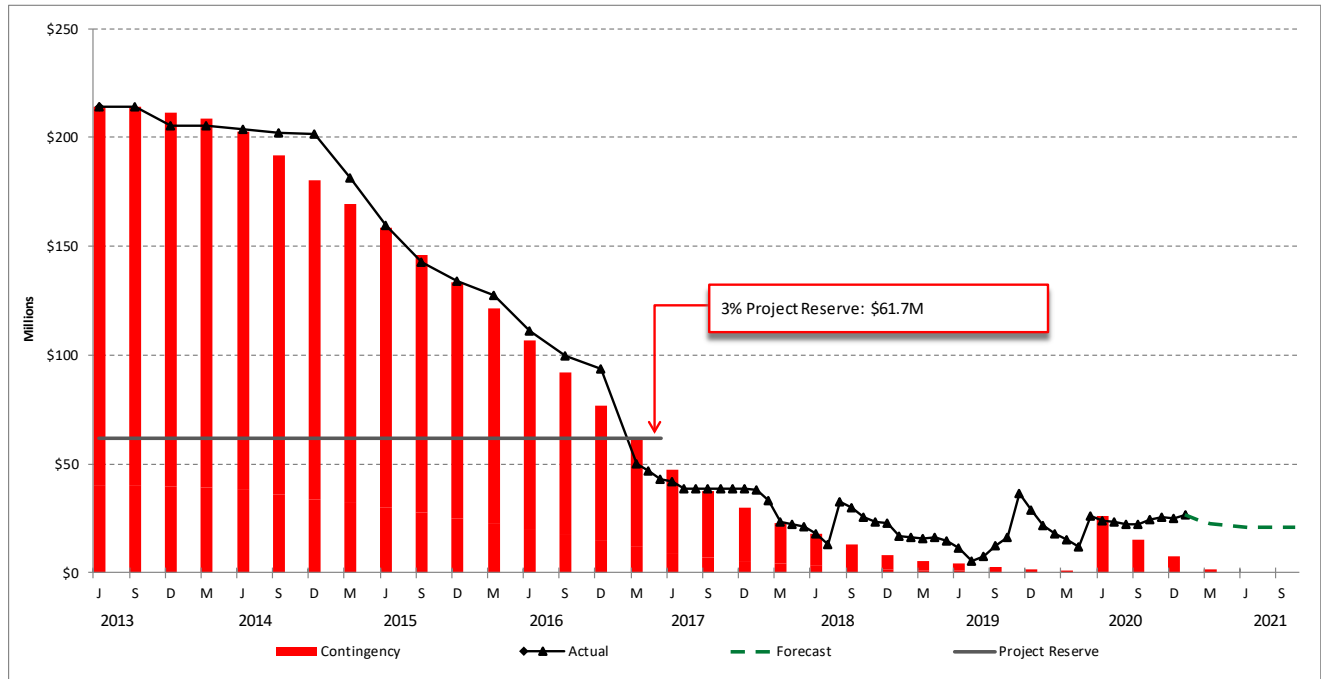
The total current forecast remains the same as the total current budget.

**Non-Crenshaw/LAX Transit Project Funded Scope of Work**

The costs shown in the table below are not part of Crenshaw/LAX Transit Project costs but are funded by other Metro projects using the services of the alignment design-builder (Contract C0988).

C0988 NON-CRENSHAW/LAX TRANSIT PROJECT FUNDED SCOPE OF WORK									
DESCRIPTION	CURRENT BUDGET		COMMITMENTS		EXPENDITURES		CURRENT FORECAST		FORECAST
	PERIOD	TO DATE	PERIOD	TO DATE	PERIOD	TO DATE	PERIOD	TO DATE	VARIANCE
405556 SYSTEMWIDE TRANSIT PLANNING	-	320,035	-	320,035	-	320,035	-	320,035	-
210090/93 FARE GATE PROJECT	-	4,891,226	-	4,891,226	(301,900)	4,250,730	-	4,891,226	-
210152 CRENSHAW/LAX BUS TRANSFER FACILITY	-	2,200,000	-	2,200,000	89,852	2,110,168	-	2,200,000	-
460303 AIRPORT METRO CONNECTOR	-	37,914,465	-	37,360,028	-	37,360,028	-	37,914,465	-
500013 C/LAX LAWA SCOPE OF WORK	-	581,918	-	581,918	18,376	539,042	-	581,918	-
405522 HIGHWAY PLANNING	-	105,457,668	-	105,457,668	-	105,402,636	-	105,457,668	-
TOTAL	-	151,365,312	-	150,810,875	(193,672)	149,982,638	-	151,365,312	-

### Cost Contingency Drawdown



### Cost Contingency Drawdown Analysis

In May 2020, the Board amended the LOP budget by \$90 million, increasing the Total LOP Current Budget to \$2,148 million. The increase included \$14.2 million for additional unallocated contingency. The drawdown plan is correlated to anticipate risk trends and measures drawdown moving forward.

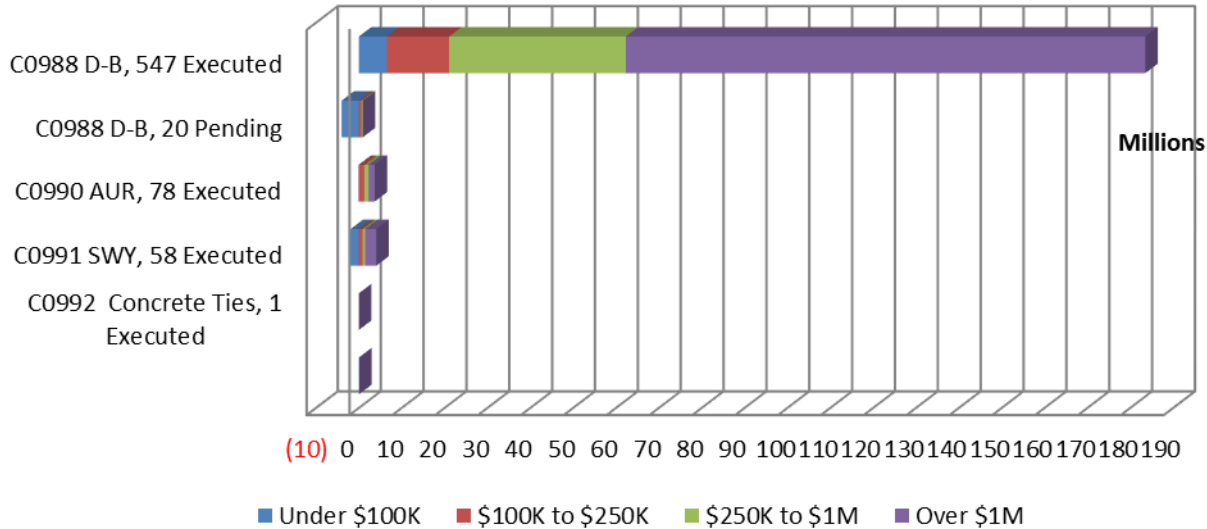
Included in the project contingency drawdown is a 3% project reserve threshold. The Board is to be notified when it becomes necessary to drawdown contingency below the project reserve line to cover project costs. This notification request was adopted by the Metro Board of Directors in September 2012. In February 2017, the project contingency drawdown curve went below the 3% project reserve level and the Board was notified.

This month, \$1,621,945 was added to the contingency. The remaining total project contingency (allocated and unallocated) is \$26,467,898.

PROJECT COST CONTINGENCY (through 29-Jan-2021)					
UNITS IN DOLLARS					
	Original Contingency	Previous Period	Current Period	To-Date	Remaining Contingency (Forecast)
Unallocated Contingency	173,500,000	(148,654,048)	1,621,945	(147,032,103)	26,467,898
Allocated Contingency	40,366,792	(40,366,792)	-	(40,366,792)	-
<b>Total Contingency</b>	<b>213,866,792</b>	<b>(189,020,840)</b>	<b>1,621,945</b>	<b>(187,398,895)</b>	<b>26,467,898</b>

## SUMMARY OF CONTRACT MODIFICATIONS

Contract Modifications (MODs) by Cost Level



	C0988	C0990	C0991	C0992	Total
	<b>547 Executed</b>	<b>78 Executed</b>	<b>58 Executed</b>	<b>1 Executed</b>	
<b>Under \$100K</b>	\$ 3,996,469	\$ (70,251)	\$ (1,918,854)	\$ 81,738	\$ 2,089,102
<b>\$100k to \$250K</b>	\$ 14,857,452	\$ 1,280,184	\$ 875,202	\$ -	\$ 17,012,838
<b>\$250K to \$1M</b>	\$ 41,270,058	\$ 984,662	\$ 590,334	\$ -	\$ 42,845,054
<b>Over \$1M</b>	\$ 121,191,340	\$ 1,417,202	\$ 2,590,000	\$ -	\$ 125,198,542
<b>Total Contract MODs</b>	\$ 181,315,319	\$ 3,611,797	\$ 2,136,682	\$ 81,738	\$ 187,145,536
<b>Contract Award Amount</b>	\$ 1,272,632,356	\$ 7,827,500	\$ 172,312,695	\$ 2,161,297	\$ 1,454,933,848
<b>% of Contract MODs</b>	<b>14.25%</b>	<b>46.14%</b>	<b>1.24%</b>	<b>3.78%</b>	<b>12.86%</b>

Five hundred and forty-seven (547) changes with a total value of \$181.3 million have been executed since award of Contract C0988. There are an additional eighteen (18) changes with a total credit value of \$3.2 million pending the administrative approval process.

Seventy-eight (78) changes with a total value of \$3.61 million have been executed for completed Contract C0990.

Fifty-eight (58) changes with a total value of \$2.14 million have been executed since award of Contract C0991.

One (1) change with a value of \$81,738 was executed for completed Contract C0992.

Percent of Contract modifications equals the total Change modifications divided by the Contract Award amount

## DISADVANTAGED BUSINESS ENTERPRISE (DBE)

### Contract C0988 Crenshaw/LAX Transit Corridor Design-Build

(Reported Data as of December 2020)

- **DBE Goal (Design)** – A numerically expressed percentage of funds apportioned to Design Contracts and is calculated based upon the relative availability of DBE firms as compared to all firms in the relevant geographic market area. **20.00%**
- **Current DBE Commitment** – Total DBE Committed Dollars divided by Total Contract Value for Design or Construction. **\$25,799,791 (20.00%)**
- **Current DBE Participation – Total amount** paid to date to DBEs divided by the amount paid to date to Prime. **\$30,242,022 (21.50%)**

Twenty-Six (26) Design subcontractors have been identified to-date

- **DBE Goal (Construction)** - A numerically expressed percentage of funds apportioned to Construction Contracts and is calculated based upon the relative availability of DBE firms as compared to all firms in the relevant geographic market area. **20.00%**
- **DBE Commitment** - Contract commitment divided by current contract value for Construction **\$259,865,769 (20.00%)**
- **Current DBE Commitment** - Actual commitments as Construction work is awarded **\$291,356,779 (22.42%)**
- **Current DBE Participation** - Total amount paid to date to DBEs divided by the amount paid to date to Prime (\$1,215,211,181) **\$345,512,516 (27.98%)**

Three Hundred Fifty-Five (355) Construction subcontractors have been identified to-date.

**PROJECT LABOR AGREEMENTS (PLA)**  
**Contract C0988 Crenshaw/LAX Transit Corridor Design-Build**  
(Reported Data as of December 2020)

• <b>Targeted Worker Goal</b> – Construction work to be performed by residents from Economically Disadvantaged Area of LA County	<b>40.00%</b>
	<b>59.38%</b>
• <b>Targeted Worker Current Attainment</b>	
• <b>Apprentice Worker Goal</b> – Construction work to be performed by Apprentices	<b>20.00%</b>
	<b>23.92%</b>
• <b>Apprentice Worker Current Attainment</b>	
• <b>Disadvantaged Worker Goal</b> – Construction work to be performed by Disadvantaged Workers whose primary place of residence is within LA County	<b>10.00%</b>
• <b>Disadvantaged Worker Current Attainment</b>	<b>10.50%</b>

**Crenshaw/LAX Transit Project  
Monthly Project Status Report**

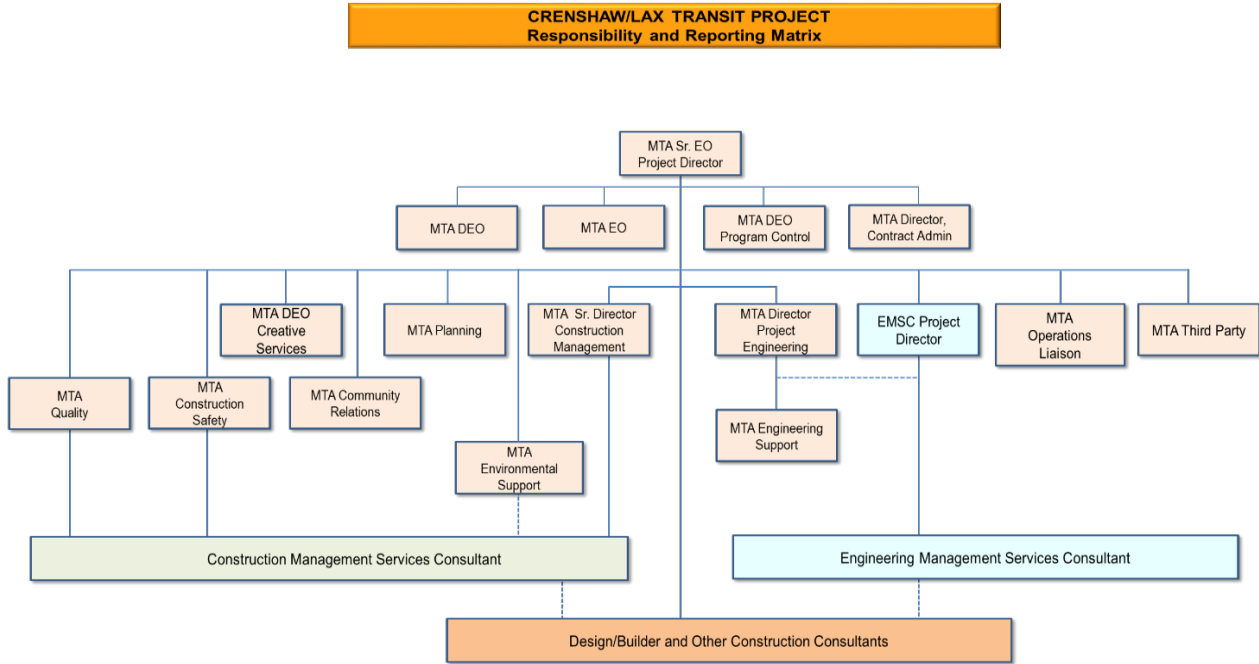
**January 2021**

**FINANCIAL/GRANTS**

CRENSHAW \$M									
JANUARY 2021									
STATUS OF FUNDS BY SOURCE									
SOURCE	(A)	(B)	(C)	(D)	(D/B)	(E)	(E/B)	(F)	(F/B)
	ORIGINAL	TOTAL	TOTAL	COMMITMENTS		EXPENDITURES		BILLED to	
	BUDGET	FUNDS	FUNDS					FUNDING SOURCE	
		ANTICIPATED	AVAILABLE	\$	%	\$	%	\$	%
FEDERAL - CMAQ	68.200	137.100	104.000	129.955	95%	122.063	89%	104.000	76%
FEDERAL - SECTION 5309 BUS CAPITAL	8.600	8.563	8.563	8.563	100%	8.563	100%	8.563	100%
FEDERAL - REGIONAL STP	20.000	103.116	103.116	102.174	99%	100.481	97%	91.243	88%
FEDERAL - ALTERNATIVE ANALYSIS	1.200	1.200	1.200	1.200	100%	1.200	100%	1.200	100%
FEDERAL - TIGER II	-	13.904	13.904	13.904	100%	13.904	100%	13.904	100%
STATE REGIONAL IMPROVEMENT PROG	36.522	36.600	36.600	36.600	100%	36.600	100%	36.600	100%
STATE PPM	0.178	0.178	0.178	0.178	100%	0.178	100%	0.179	101%
STATE PROP 1B PTMISEA	201.200	128.950	128.950	128.950	100%	128.950	100%	128.950	100%
STATE PROP 1 B LOCAL PARTNERSHIP PROGRAM	-	49.529	49.529	49.529	100%	49.529	100%	49.529	100%
MEASURE R - TIFIA LOAN	545.900	545.900	545.900	545.900	100%	545.900	100%	545.900	100%
MEASURE R 35%	661.100	512.445	512.445	512.445	100%	494.892	97%	432.502	84%
CITY CONTRIBUTION	52.400	101.707	101.707	43.558	43%	43.558	43%	40.707	40%
GENERAL FUNDS		54.300	54.300	54.300	100%	54.300	100%	54.300	100%
MISC. REVENUE		1.700	1.700	1.700	100%				
PROPOSITION C 25% HIGHWAY	148.900	392.758	392.758	391.979	100%	391.979	100%	391.988	100%
PROPOSITION C 40% DISCRETIONARY	-	0.000	0.000	-	-	-	0%	-	0%
PROPOSITION A 35% RAIL CAPITAL	4.800	4.850	4.850	4.850	100%	4.850	100%	4.851	100%
MEASURE M		55.200	55.200	55.200	0%				
<b>TOTAL</b>	<b>1,749.000</b>	<b>2,148.000</b>	<b>2,114.900</b>	<b>2,080.985</b>	<b>97%</b>	<b>1,996.947</b>	<b>93%</b>	<b>1,904.416</b>	<b>89%</b>
NOTES:									
1. EXPENDITURES ARE CUMULATIVE THROUGH JANUARY, 2021									
2. TOTAL NEW LOP APPROVED IN MAY 2020 IS \$2,148M.									
3. ORIGINAL BUDGET BASED ON BOARD APPROVED OCTOBER 2011 FUNDING/EXPENDITURE PLAN.									
4. EXPENDITURES EXCLUDE \$6.6 MILLION FOR STATE BOARD OF EQUALIZATION DECISION TO TAX LRT VEHICLE DELIVERIES SINCE AUG. 2016. (METRO APPEALING DECISION BUT PAID TAXES TO NOT INCLUDE LATE FEES).									

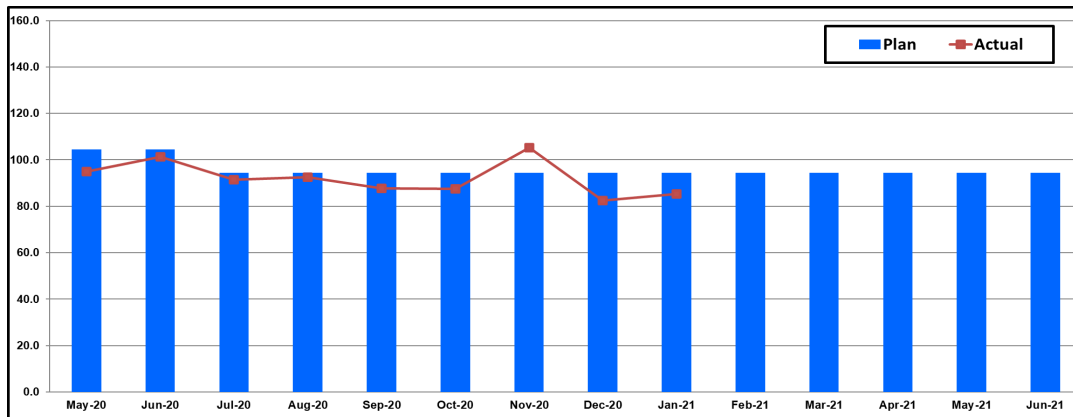
## PROJECT ORGANIZATION AND STAFFING

The design-build contract is being managed by joint team of Metro and consultant personnel jointly located at the Integrated Project Management Office (IPMO).

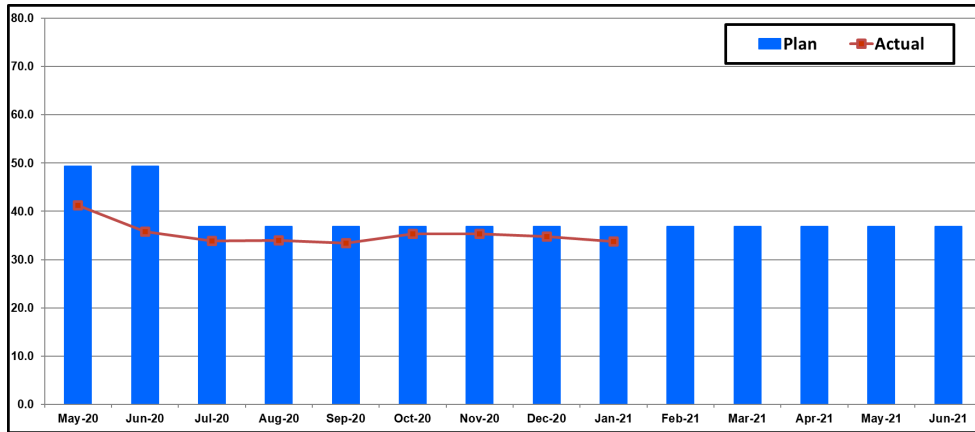


The project staffing charts have been updated with a revised FY21 staffing plan. The overall FY21 Total Project Staffing Plan averages 94.5 Full Time Equivalent (FTEs) per month consisting of 36.9 for Metro Agency staff, 46.3 for Construction Management Support Services Consultant and 11.3 for Design and Engineering Support Services Consulting staff.

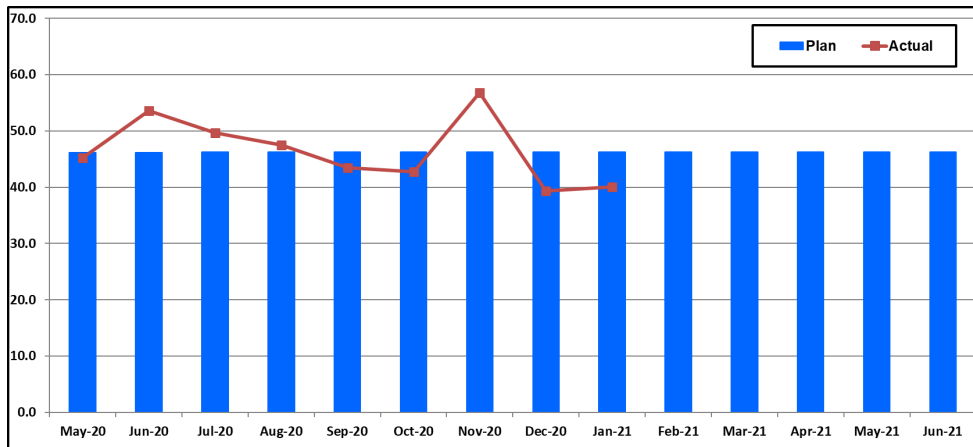
For January 2021, total project staffing were 85.3 FTEs for the month consisting of 33.8 FTEs for Metro’s project administration staff, 40.1 FTEs for Construction Management Support Services Consultant and 11.5 FTEs for Design and Engineering Support Services Consulting staff.



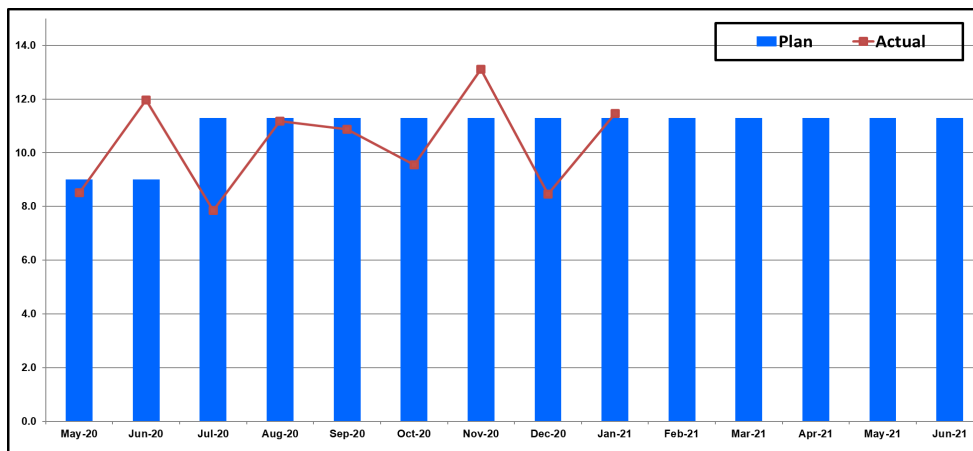
**Metro Staff**



**CM Support Services Staff (Consultant)**



**Engineering Services Staff (Consultant)**



**Staffing by Group**

The opposing graphs represent planned vs. actual staffing levels by group.

Metro staffing includes full time staff located in the IPMO as well as part-time support located at Gateway Headquarters.

Staffing plans are developed for each fiscal year based on project needs.



### **REAL ESTATE**

- Metro has obtained Right-of-Entry (ROE) agreements for most properties requiring access due to revised construction schedule.
- Metro is working on initiating process for Street Vacations / Dedications.

### **QUALITY ASSURANCE**

- Attended weekly Quality Team Meetings with WSCC Lead Quality personnel.
- Obtained weekly update for items related to City of Los Angeles Bureau of Contract Administration (ConAd).
- WSCC Quality issued two (2) Nonconformance Report (NCR) during this period.
- No new CWP reviews were conducted during this month.
- Metro Quality participated in Readiness Review meeting discussion for Art Fence.
- Metro Quality participated in Internal Project Review Weekly Meetings.
- Metro Quality reviewed procedures and participated in project closeout meetings.
- Metro Quality continued conducting the 2020 Project Annual Audit.
- Metro's Independent Testing Lab (ITL) was not scheduled to perform verification inspections, material sampling and testing during this month.

## ENVIRONMENTAL STATUS

- Noise and vibration spot checks continue to be conducted weekly at multiple sensitive locations, and at locations of new activities along the project alignment.
- SWPPP inspections of all project areas were conducted weekly by WSCC and spot checks by Metro to observe site conditions and report on performance of stormwater protection Best Management Practices and overall housekeeping.
- No fugitive dust complaints were received during the reporting period.
- EMS and Environmental Compliance Progress meetings were held during this reporting period on 1/14/21 and 1/28/21.
- There was a qualifying rain event on 1/28/2021 – 1/29/2021. A REAP was prepared by WSCC on 1/26/2021 and distributed to their field employees. WSCC's stormwater consultant collected pH and turbidity samples per their SWPPP. The average turbidity samples exceeded the thresholds allowed in the approved SWPPP permit for samples collected on 1/29/2021. Appropriate reporting measures are being taken to report these exceedances to the State Water Board.
- Spot check nighttime noise monitoring was performed by Metro on 12/01/20, 1/06/21, 1/07/21, 1/11/21, 12/20/21, and 12/26/21. There were no nighttime noise exceedances observed.
- On Wednesday, January 13, 2021, a fossil medium-sized mammal proximal femoral epiphysis (femoral head) was discovered ex-situ (out of context) in a spoils pile from a small diameter drill hole during the La Brea jet grouting operation. The bone was discovered at Hole 16A on East Florence Ave. While found out of context, the fossil is likely identifiable to a low taxonomic order, which may be used to constrain the age and geologic unit from which it originated. Therefore, the fossil is considered to be potentially significant and it was collected for laboratory analysis. Notification of this fossil find was sent to Luis Lopez at the FTA on January 22, 2021.

### **CONSTRUCTION/COMMUNITY RELATIONS**

- Continued working with WSCC to minimize the impacts of full street and land closures along the Crenshaw/LAX Transit Project.
- Circulated bilingual public notice for project construction activities. The notices were distributed via-email, social media platforms, and hand delivered to stakeholders, and phone calls were made to stakeholders directly impacted by construction activities.
- Continued coordinating with WSCC to mitigate impacts to businesses and residents along the Crenshaw/LAX Transit Project.
- Ongoing coordination with WCSS and Metro Bus Operations to plan for bus detour routes to accommodate lane reductions and closures required to implement construction activities.
- Continued outreach to area stakeholders including the LAX area regarding ongoing construction activities, mitigation measures and train testing.
- Continued outreach to key stakeholders and community organizations via-phone calls, emails, and virtual briefings.
- Planning and organizing for upcoming virtual community construction update meetings.
- Ongoing virtual presentations to key stakeholder groups.
- Ongoing coordination and partnership with first responders and city staff to address issues with homeless encampments, traffic plans and street closures.

### **CREATIVE SERVICES**

- Participated in weekly Art Program and Signage coordination meetings with DB Contractor.
- Provided responses to multiple RFI, shop drawings and submittals.
- Participated in Art Glass Fabrication Coordination meeting with the DB Contractor Fabrication Sub Contractor.
- Participated in the DB Contractors Readiness Review for Installation of the Aviation Station Art Fence.

## **SAFETY AND SECURITY**

- Conducted Monthly All Hands Safety & Security meeting with WSCC on 01/28/2021 and the following topics were discussed- The year in 2020 incident review, staffing plan update, COVID- 19 reporting procedures and protocols, ventilation, Energization/Start -Up, Track Allocation, DOSH Mining & Tunneling Reclassification of tunnels from Potentially gassy to Non-Gassy and weekend work.
- Participated in WSCC's daily briefings regarding lessons learned, participated in the weekly Monday Safety huddles/Safety briefings at EXPO, MLK and VERNON stations including, weekly progress/scheduled meetings where we discussed safety related issues.
- Participated in the weekly owners 9:00 am Tuesday scheduled progress meetings.
- Participated in the 7:00 am and 8:00 am Wednesday weekly corporate scheduled safety conference call to update the safety team on safety issues and current jobsite updates.
- Monitored underground stations and alignment, participated in the weekly Monday, Wednesday and Friday safety walks with WSCC Underground Safety Manager surveying construction activities daily including weekends to ensure compliance with contract specifications.
- Total Days Away (DART) Injury Rate: Six (6) Days Away from Work (DART) Injuries is 0.1. The National Ave is 1.7.
- Project to Date – Total Days Away Rate (561 Days Away from Work) is 12.2. (No National Published Rate.
- Contract C0988 (WSCC) completed 105,924.01 work hours with (0) recordable/Days Away from Work injury for the month of January 2021. Total Project to Date work hours is 10,612.034 with a total of one hundred and two (102) recordable incidents. The Project Recordable Rate is 1.92
- The Bureau of Labor Statistics (BLS) average recordable rate per 200,000 work hours is 2.5.

## CHRONOLOGY OF EVENTS

November 2011	Board approved the Life-of-Project Budget of \$1.749 billion.
December 30, 2011	Received Record of Decision from FTA.
March 12, 2012	Received Statement of Qualifications for Contract C0988 C/LAX Transit Corridor.
May 30, 2012	Awarded Contract No. C0990 C/LAX Advanced Utility Relocations to Metro Builders and Engineers Group LTD.
May 23, 2013	Board amended the Agency's FY14 Proposed Budget to include funding of \$80 million for an underground station at Leimert Park Village as part of the baseline project.
June 27, 2013	The Board awarded Contract C0988 Crenshaw/LAX Transit Corridor to Walsh-Shea Corridor Constructors.
September 10, 2013	Issued Notice to Proceed to Walsh-Shea Corridor Constructors, Contract C0988 Crenshaw/LAX Transit Project.
December 5, 2013	The Board approved Memorandum of Understanding with the Los Angeles World Airports for a parallel design and possible construction modifications near Aviation/Century Station to accommodate elements of LAWA's SPAS.
December 5, 2013	The Board awarded Contract C0992 with Rocla Concrete Tie, Inc, for the procurement of concrete ties and assembly items.
January 21, 2014	A Groundbreaking Ceremony was held at the Crenshaw/Exposition Station.
January 23, 2014	The Board awarded Contract C0992A Rail and Bumping Posts to LB Foster Rail Technologies Corp.
August 21, 2014	Substantial Completion issued for Advanced Utility Relocations Contract C0990.

## CHRONOLOGY OF EVENTS (Continued)

May 28, 2015	The Board awarded Contract C0991 Division 16: Southwestern Yard to Hensel Phelps/Herzog JV. Also increased by \$22.0 million the Life of Project Budget for the Southwestern Yard Project to a new amount of \$307.2 million.
May 28, 2015	The Board approved Design Option 3 for the track alignment to accommodate the future Metro Connector Transit Station (96 <sup>th</sup> St. Station).
June 29, 2015	Issued Notice to Proceed to Hensel Phelps/Herzog JV, Contract C0991 Division 16: Southwestern Yard.
April 27, 2016	The Tunnel Boring Machine was launched and drilling from north to south of the alignment started.
May 7, 2016	Held Halfway There Community Celebration at Leimert Park marking the halfway point of the project.
May 27, 2016	Held Groundbreaking Ceremony for the Southwestern Yard (Division 16).
April 6, 2017	The northbound tunnel boring machine completed mining with the hole thru at Leimert Park Station.
June 15, 2018	Restoration of the road over the three underground stations along Crenshaw Blvd. commenced at Leimert Park Station area and the at-grade transition section.
January 30, 2019	Substantial completion was achieved by the Southwestern Yard (Division 16) Contract C0991 Contractor, Hensel/Phelps/Herzog JV.
May 28, 2020	The Board amended the Life-of-Project budget by \$90 million for a new total of \$2,148 million. The Project Schedule was revised to reflect a 2021 revenue service date.