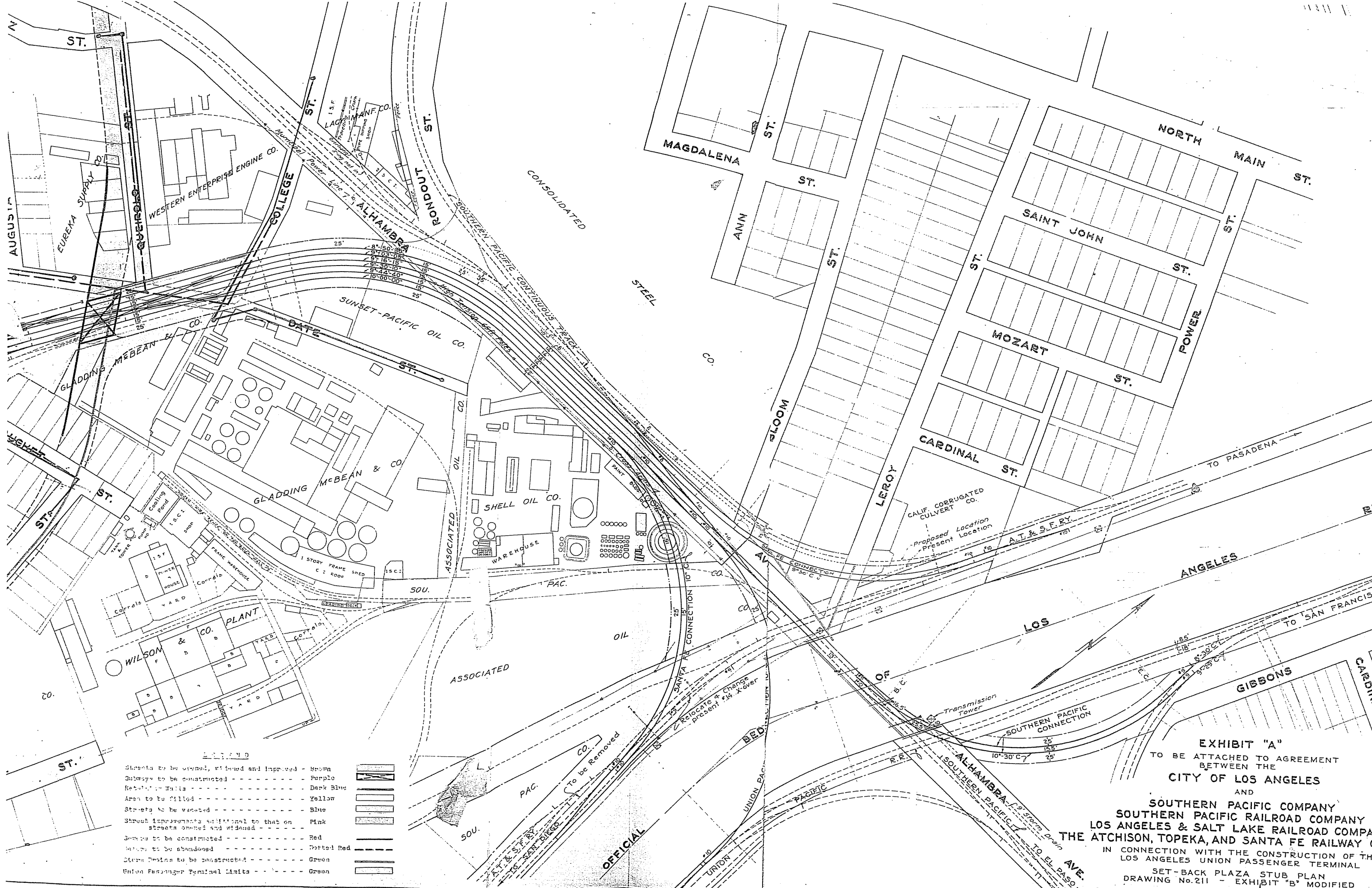


TRACK A-1 945'  
 TRACK A 785'  
 TRACK B 965'  
 TRACK C 1020'  
 TRACK D 1120'  
 TRACK E 1220'  
 TRACK F 1320'  
 TRACK G 1420'  
 TRACK H 1520'  
 TRACK I 1620'  
 TRACK J 1720'  
 TRACK K 1820'  
 TRACK L 1920'  
 TRACK M 2020'  
 TRACK N 2120'  
 TRACK O 2220'  
 TRACK P 2320'  
 TRACK Q 2420'  
 TRACK R 2520'  
 TRACK S 2620'  
 TRACK T 2720'  
 TRACK U 2820'  
 TRACK V 2920'  
 TRACK W 3020'  
 TRACK X 3120'  
 TRACK Y 3220'  
 TRACK Z 3320'  
 TRACK AA 3420'  
 TRACK AB 3520'  
 TRACK AC 3620'  
 TRACK AD 3720'  
 TRACK AE 3820'  
 TRACK AF 3920'  
 TRACK AG 4020'  
 TRACK AH 4120'  
 TRACK AI 4220'  
 TRACK AJ 4320'  
 TRACK AK 4420'  
 TRACK AL 4520'  
 TRACK AM 4620'  
 TRACK AN 4720'  
 TRACK AO 4820'  
 TRACK AP 4920'  
 TRACK AQ 5020'  
 TRACK AR 5120'  
 TRACK AS 5220'  
 TRACK AT 5320'  
 TRACK AU 5420'  
 TRACK AV 5520'  
 TRACK AW 5620'  
 TRACK AX 5720'  
 TRACK AY 5820'  
 TRACK AZ 5920'  
 TRACK BA 6020'  
 TRACK BB 6120'  
 TRACK BC 6220'  
 TRACK BD 6320'  
 TRACK BE 6420'  
 TRACK BF 6520'  
 TRACK BG 6620'  
 TRACK BH 6720'  
 TRACK BI 6820'  
 TRACK BJ 6920'  
 TRACK BK 7020'  
 TRACK BL 7120'  
 TRACK BM 7220'  
 TRACK BN 7320'  
 TRACK BO 7420'  
 TRACK BP 7520'  
 TRACK BQ 7620'  
 TRACK BR 7720'  
 TRACK BS 7820'  
 TRACK BT 7920'  
 TRACK BU 8020'  
 TRACK BV 8120'  
 TRACK BW 8220'  
 TRACK BX 8320'  
 TRACK BY 8420'  
 TRACK BZ 8520'  
 TRACK CA 8620'  
 TRACK CB 8720'  
 TRACK CC 8820'  
 TRACK CD 8920'  
 TRACK CE 9020'  
 TRACK CF 9120'  
 TRACK CG 9220'  
 TRACK CH 9320'  
 TRACK CI 9420'  
 TRACK CJ 9520'  
 TRACK CK 9620'  
 TRACK CL 9720'  
 TRACK CM 9820'  
 TRACK CN 9920'  
 TRACK CO 10020'

**LEGEND**

Streets to be opened, widened and improved	- Brown	
Subways to be constructed	- Purple	
Retain Walls	- Dark Blue	
Area to be filled	- Yellow	
Streets to be vacated	- Blue	
Street improvements additional to that on streets opened and widened	- Pink	
Streets to be constructed	- Red	
Streets to be abandoned	- Dotted Red	
Street Design to be constructed	- Green	
Union Passenger Terminal Units	- Green	

**OFFICIAL**



**LEGEND**

Streets to be opened, widened and improved -	Brown	
Subways to be constructed -	Purple	
Retaining Walls -	Dark Blue	
Area to be filled -	Yellow	
Streets to be vacated -	Blue	
Street improvements additional to that on streets opened and widened -	Pink	
Streets to be constructed -	Red	
Railways to be abandoned -	Dotted Red	
Street Drains to be constructed -	Green	
Union Passenger Terminal Masts -	Green	

**EXHIBIT "A"**  
 TO BE ATTACHED TO AGREEMENT  
 BETWEEN THE  
**CITY OF LOS ANGELES**  
 AND  
**SOUTHERN PACIFIC COMPANY**  
**SOUTHERN PACIFIC RAILROAD COMPANY**  
**LOS ANGELES & SALT LAKE RAILROAD COMPANY**  
**THE ATCHISON, TOPEKA, AND SANTA FE RAILWAY CO.**  
 IN CONNECTION WITH THE CONSTRUCTION OF THE  
 LOS ANGELES UNION PASSENGER TERMINAL  
 SET-BACK PLAZA STUB PLAN  
 DRAWING No. 211 - EXHIBIT "B" MODIFIED  
 LOS ANGELES, CALIF.