



METRO LINER ORANGE LINE UPDATE

Gary Spivack, Division Manager
Division 15 – Sun Valley



Metro[™]

OPERATING PLAN PROGRAM

- **PURPOSE**

- **TO DEVELOP AN OPERATIONAL PLAN FOR THE SAN FERNANDO VALLEY ORANGE LINE SERVICE**
- **TO BRING TOGETHER THE REQUISITE DISCIPLINES AND STAFF TO INSURE THAT THE ORANGE LINE IS A SUCCESS**



PROGRAM SCOPE

- MONITOR CONSTRUCTION PROGRESS
- COORDINATE WITH MARKETING ON SIGNAGE AND WAYFINDING ACTIVITIES
- ACQUIRE AND TEST BUSES
- DEVELOP SERVICE PLAN
- PREPARE MAINTENANCE AND OPERATING PLANS (INCLUDES TELECOM & REVENUE)
- DEVELOP SYSTEM SAFETY PLAN
- PROVIDE STAFF TRAINING
- DEVELOP SECURITY PLAN
- DEVELOP SERVICE RESTORATION



SCOPE OF SERVICE PLAN

- **OPENING DAY SERVICES**
- **DEVELOPMENT OF OPERATING PROTOCOLS AND SERVICES**
- **LOCAL/REGIONAL STOP LOCATION**
- **REVISIONS TO SFV SERVICE SYSTEM**
- **SERVICE RESTORATION PLANS**

PROGRAM DIRECTIONS

- **ALL SERVICES OPERATED FROM DIVISION 8 – CHATSWORTH**
- **PRIMARY HEADWAYS PEAK 5 MINUTES; OFF PEAK 10-20 MINUTES TIME OF DAY; ROUND TRIP 84 MINUTES**
- **LOCATE FARE INSPECTOR / SECURITY SERVICES CLOSEST TO LINE CENTER**
- **SEND TOS STAFF TO OCTA TO LEARN ON ARTICULATED EQUIPMENT AND TRAIN THE TRAINER**

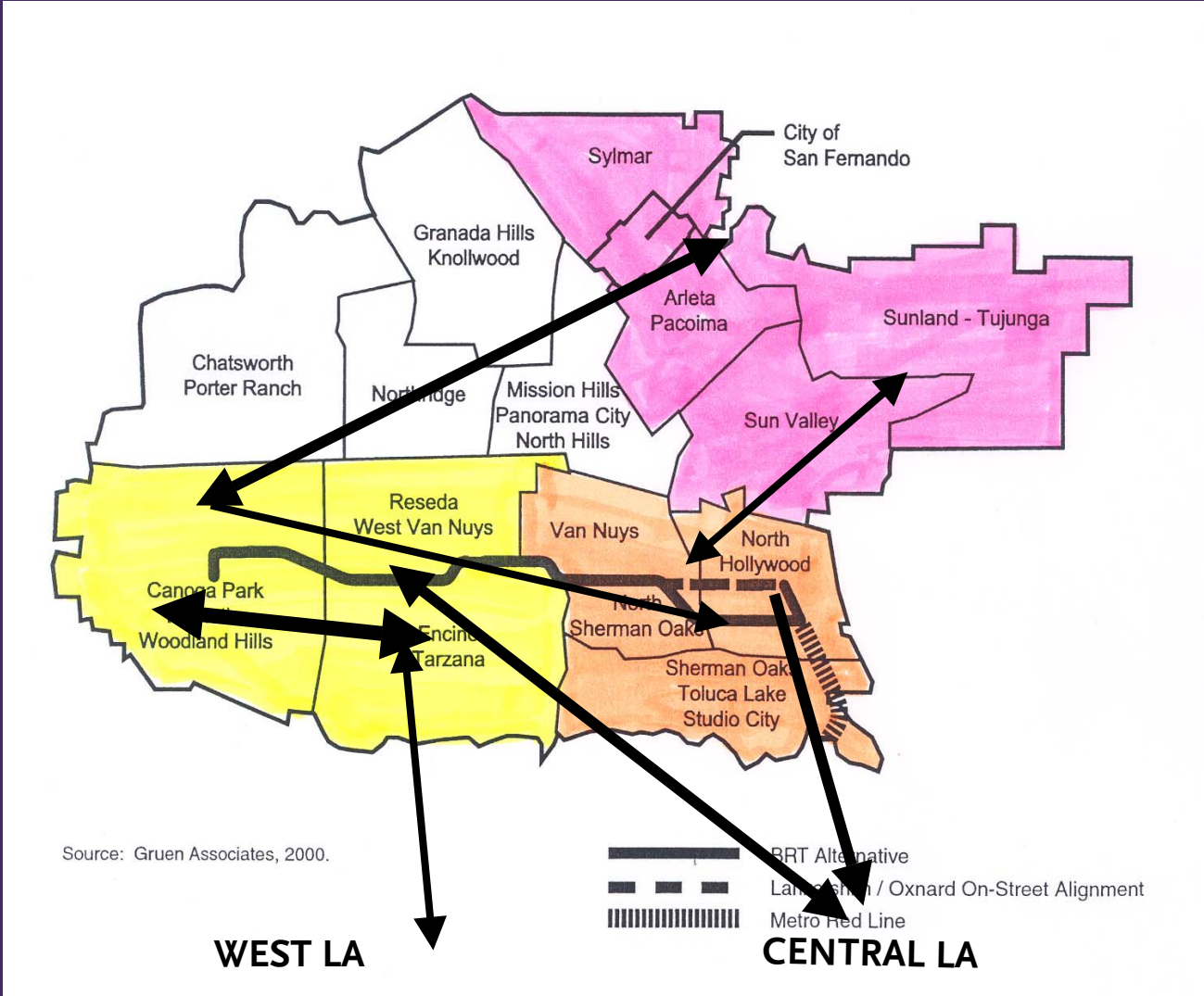
STAFF LEADS ON PROGRAM TASKS

- BUS ACQUISITION
- MARKETING PLAN
- SERVICE PLAN
- MAINT PLAN
- BUDGET
- SYST. SAFETY PLAN
- SECURITY PLAN
- OPERATING PLAN
- R. HUNT
- W. MORSE, D. LAFONT
- M. BREWER, C. SILVER
- J. PACHAN, J. ROBERTS
- K. DRAYTON
- T. ENG, A. CHIU
- LT. P. JORDAN
- G. TRUDEAU

ALIGNMENT LOOKING EAST TO CHANDLER AT ETHEL



SIMULATION TRAVEL PATTERNS USING THE ORANGE LINE



ISSUES AND CONCERNS

- 1. DEVELOP SERVICE SYSTEM LINKAGES TO FOSTER MORE VALLEY – LA BASIN TRAVEL**
- 2. LOCATING RESOURCES FOR SECURITY LOCATION IN MID SECTION OF THE LINE**
- 3. MANAGING CROSS STREET PEDESTRIAN MOVEMENTS AT HIGH VOLUME INTERSECTIONS**

CRITICAL TARGET DATES

- | | |
|----------------------|---------------------|
| • OPENING DAY | • 8/31/05 |
| • CONSTRUCTION DONE | • 8/26/05 |
| • INTEGRATED TESTING | • 7/31/05 |
| • BUSES ON SITE | • 6/30/05 |
| • FARE INSPECTORS | • 6/30/05 |
| • STAFFING/TRAINING | • 2/01/05 – 6/30/05 |
| • BUDGET FOR FY'06 | • 3/30/05 |
| • MARKETING PLAN | • 12/30/04 |
| • SERVICE PLANNING | • 10/28/04 |
| • PILOT BUS TESTING | • 9/26/04 |

WOODMAN AVENUE VIEWS

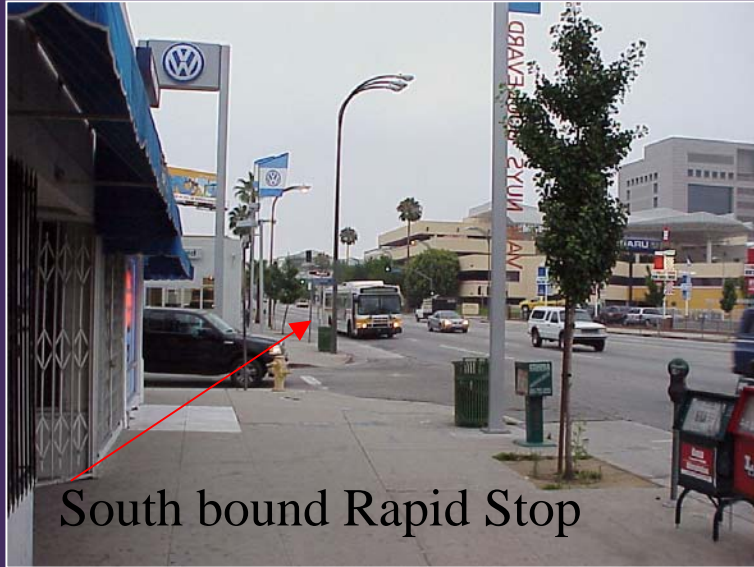


1. West from Fulton to Woodman
2. West from Woodman
3. East from Woodman



Metro

VAN NUYS CROSSING AND BUSES



**STATION
SITE**



QUESTIONS ???

