



COMMUNITY *DASH* TRANSIT NEED ASSESSMENT STUDY

Preliminary Findings Presentation

LADOT
CITY OF LOS ANGELES
DEPARTMENT OF TRANSPORTATION

TMD TRANSPORTATION
MANAGEMENT
& DESIGN, INC.

January and February, 2005

Agenda

- **Project Goals & Funding Constraints**
- **Project Approach**
- **Evaluation & Ranking of Alternatives**
- **Next Steps**

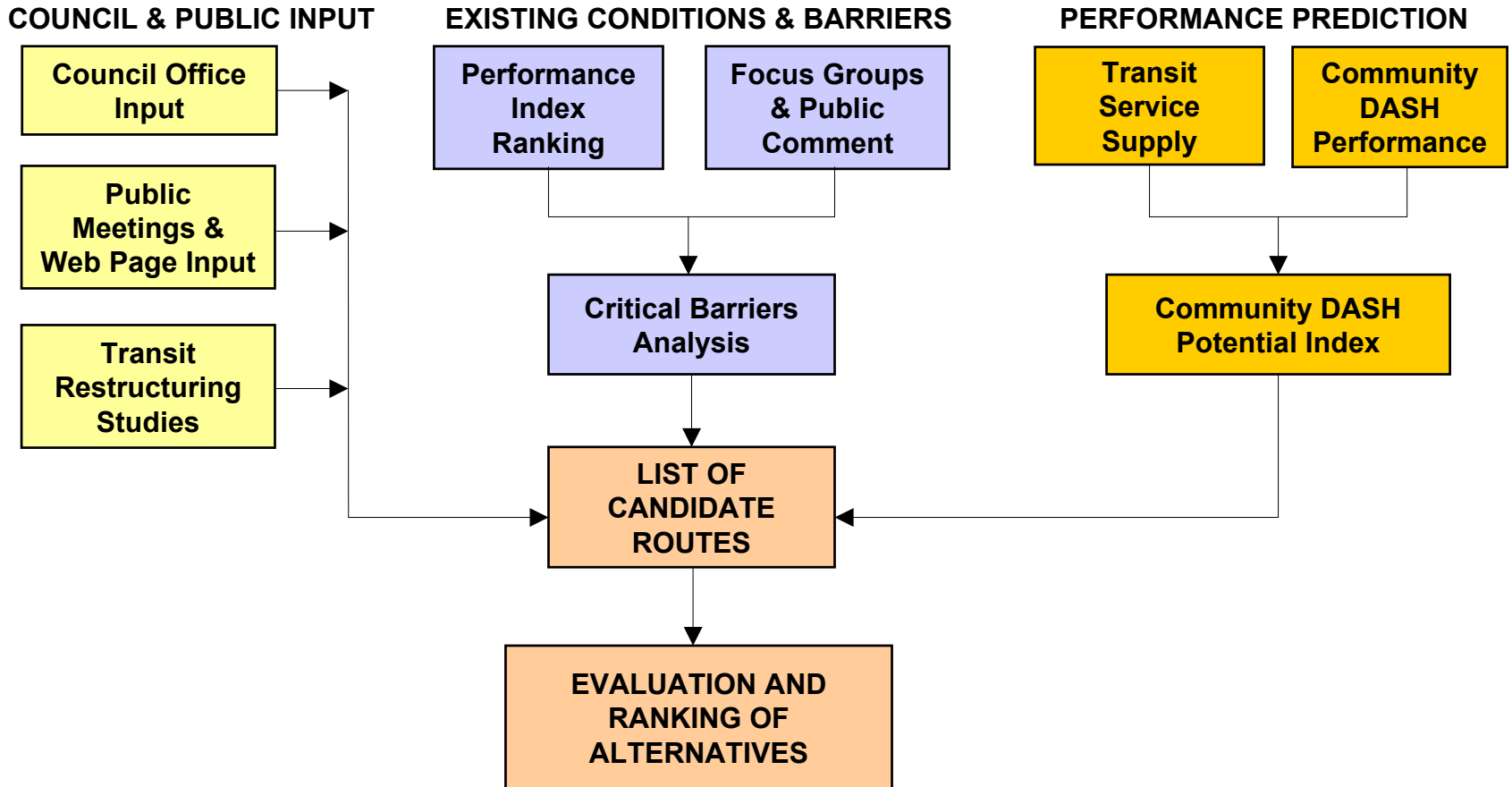
Project Goals

- **Develop an evaluation methodology to prioritize proposed new Community DASH services**
- **Recommend actions and remedial measures to improve ridership on marginal and low-performing existing routes**

Funding Constraints

- **Ability to implement new LADOT service is limited by available Proposition A funds for on-going operations**
- **Best case scenario: one additional new route Citywide annually over the next ten years (operating funds only)**

Project Approach



Council & Public Input

- **Three (3) Sets of Council Staff Briefings**
- **Seven (7) Public Meetings**
- **Three (3) MTA Sector Governance Council Meetings**
- **Five (5) Focus Groups**
- **Web Site for Public Comment**
- **More Than 100 Suggestions Were Provided**

Existing Conditions

■ Marginal and Poorly Performing Routes

- **Pueblo del Rio** (0.61 in 2004)
- **Fairfax** (0.60 in 2004)
- **Hollywood/West Hollywood** (0.57 in 2004)
- **Los Feliz** (0.54 in 2004)
- **Beachwood Canyon** (0.40 in 2004)
- **Warner Center** (0.04 in 2004)

■ Performance Improved on Two Routes

- **San Pedro** (0.61 score in 2003; improved to 0.82 in 2004)
- **Hollywood/Wilshire** (0.47 score in 2003; improved to 0.71 in 2004)

Performance Barriers

- **Fare Integration with MTA**
 - Currently Only on Selected Routes: Beachwood Canyon, Los Feliz, San Pedro (former RTD/MTA Routes) and Pico Union/Echo Park, and El Sereno/City Terrace (Consent Decree)
- **Transfer of Service Without Provision of Operating Funds**
 - Poor Performing MTA Route Segments = Poor Performing DASH Routes
- **Route Length, Competing Services/Duplication, and Operational Issues**

Performance Prediction

■ Transit Service Supply

- **Current levels of transit service:**
 - All Metro & Municipal Operators Bus & Rail
 - Campus Shuttles
- **Predicted service based on:**
 - Employment Density
 - Zero-Vehicle Households

■ Community DASH Performance

- **Predicts the average performance index score**
- **Predicted performance based on:**
 - Employment Density
 - Poverty
 - Auto Deficit
 - School Land Use

Evaluation & Ranking of Alternatives

■ Ranking based on Community DASH Potential Index

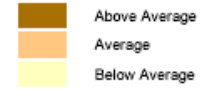
- Combines Transit Service Supply and Predicted Community DASH Performance

■ Other Critical Factors

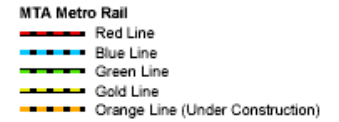
- **Barriers to Success – No Critical Flaws**
 - Fare Integration
 - Operational Factors & Service Duplication
- **Provision of On-Going Operating Subsidy**
 - Formula Funds for MTA Replacement, Feeder & Restructured Service
 - Participation by Other Jurisdictions and/or Entities

Route Proposals and DASH Potential Index

Community DASH Potential
High Community DASH average score +
Transit service under-supply areas



Existing DASH Service Proposed DASH Service



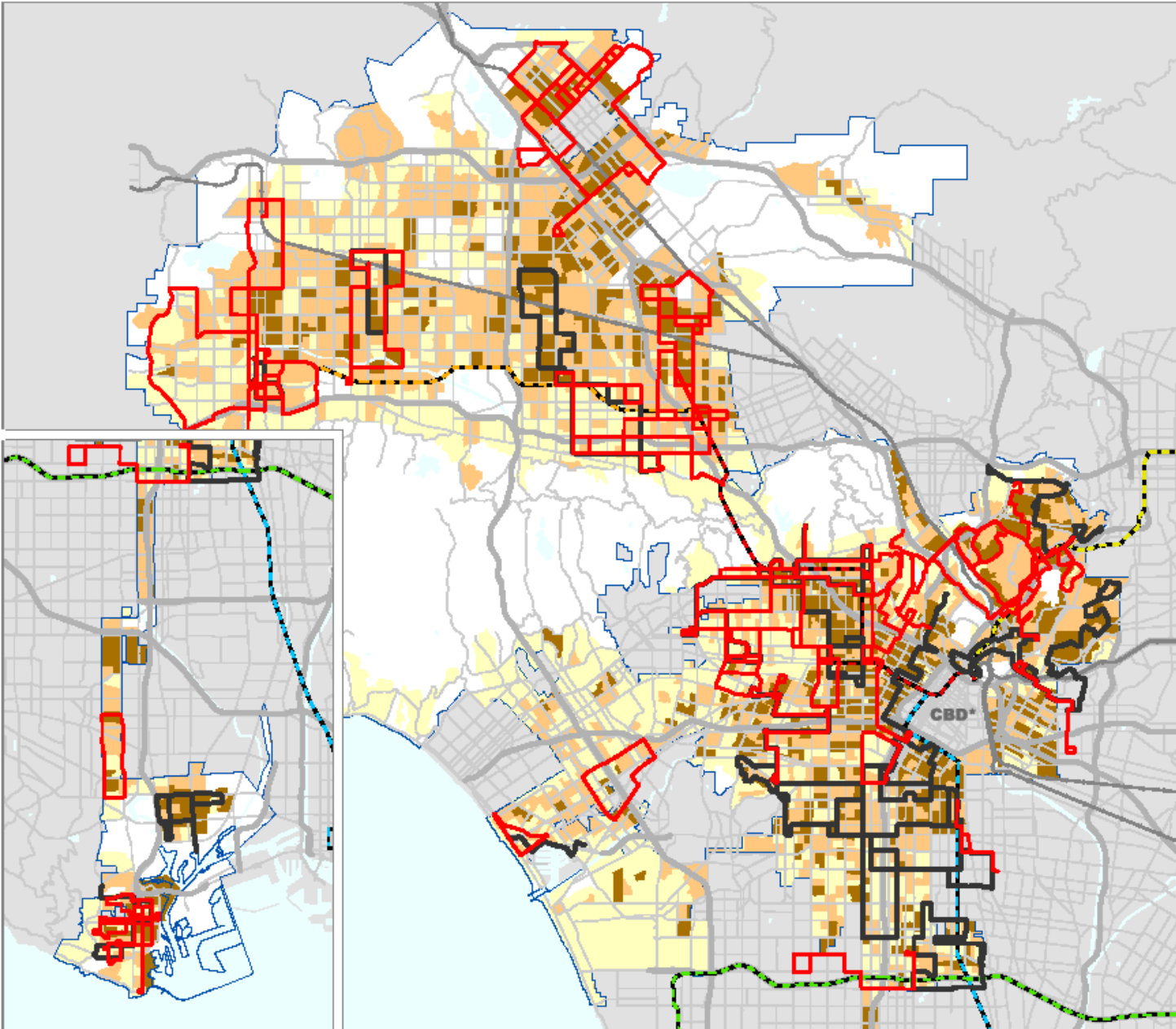
Metrolink



City of Los Angeles

* Areas served by Downtown DASH are excluded from this study.

Data: LADOT, MTA, Thomas Brothers Maps, US Census, USGS



Community DASH Potential Index

Council District	Route	Community DASH Potential Index	One-Way Route Miles	Peak Vehicles
2/6	Noho / Sun Valley	1.29	10.3	6
7	Sylmar / San Fernando	1.25	8.8	5
9	Pueblo Del Rio / Huntington Park -- Alternative	1.24	6.7	4
1/13/14	Glassell Park	1.20	7.9	5
8	North University Park	1.19	4.6	3
11	Palms / Culver City	1.16	6.8	4
3/12	Chatsworth / Warner Center	1.12	9.3	6
1	Cypress Park / Lincoln Heights	1.12	4.8	3
2/5	Van Nuys -- Alternative 1	1.12	8.7	4
15	West Watts	1.10	5.8	4
4/13	Hollywood -- Alternative 1	1.10	11.8	6
1	Northeast Los Angeles	1.10	6.2	4
6	Sun Valley	1.08	6.6	4
7	Van Nuys / Laurel Canyon	1.05	17.8	10
1/14	Mount Washington -- Alternative 3	1.03	7.3	5
7	Hubbard/Sayre	1.02	5.1	3
7	Van Nuys Blvd Local	1.01	4.6	3
15	San Pedro 7th Street	1.00	4.4	2
4/13	Los Feliz -- Alternative 2	0.98	5.8	2
10	Arlington	1.02	4.2	3
3	Warner Center / Pierce College	0.98	4.7	3
1	Highland Park / Eagle Rock (Gold Line) Connector	0.95	3.7	2
3/12	Northridge -- Alternative 1	0.94	12.8	6
2/6	North Hollywood -- Alternative 2	0.93	10.9	6
15	Harbor City	0.93	6.0	4

SAN FERNANDO VALLEY

Route	Community DASH Potential Index	One-Way Route Miles	Peak Vehicles	Comments
Noho / Sun Valley	1.29	10.3	6	Refine peak vehicles and route length
Sylmar / San Fernando	1.25	8.8	5	Refine peak vehicles and route length
Chatsworth / Warner Center	1.12	9.3	6	Check overlap with MTA service
Van Nuys -- Alternative 1	1.12	8.7	4	Productive part of existing route; no Studio City service
Sun Valley	1.08	6.6	4	Noho / Sun Valley alternative provides greater coverage
Van Nuys / Laurel Canyon	1.05	17.8	10	Route is too long; examine coverage by other routes
Hubbard/Sayre	1.02	5.1	3	Meets Minimum Performance Criteria Only -- Replacement Service
Van Nuys Blvd Local	1.01	4.6	3	Duplication of MTA routes -- underlying service issue
Warner Center / Pierce College	0.98	4.7	3	Route proposed by MTA staff as part of Bus-Rail Interface Plan for the Orange Line
Northridge -- Alternative 1	0.94	12.8	6	Refine peak vehicles and route length -- Orange Line Opportunity
North Hollywood -- Alternative 2	0.93	10.9	6	Refine peak vehicles and route length
North Hollywood -- Alternative 1 (a)	0.98	5.9	4	Fails to meet Performance Criteria
Sylmar Circulator (a)	0.92	7.4	4	Fails to meet Performance Criteria -- Replacement Service
Topanga Canyon (a)	0.91	6.2	4	Fails to meet Performance Criteria
Arleta / Pacoima Circulator	0.90	9.0	5	Potential alternative to Van Nuys / Laurel Canyon proposal
Studio City	0.90	9.6	4	Studio City segment of existing route -- refine peak vehicles
Warner Center / Mulholland	0.85	15.0	9	Route is too long -- Replacement Service
Warner Center -- Alternative 1 (a)	0.77	5.8	3	Fails to meet Performance Criteria -- Orange Line Opportunity
Riverside Shuttle (a)	0.73	8.8	5	Fails to meet Performance Criteria
Calabasas Warner Center (a)	0.51	6.2	4	Fails to meet Performance Criteria

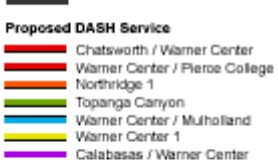
Route Proposals and DASH Potential Index West Valley Area

Route	Potential Index
Chatsworth / Warner Center	1.11
Warner Center - Pierce College	0.88
Northridge 1	0.93
Topanga Canyon	0.90
Warner Center Mulholland	0.84
Warner Center 1	0.76
Calabasas Warner Center	0.50

Community DASH Potential
High Community DASH average score + Transit service under-supply areas



Existing DASH Service

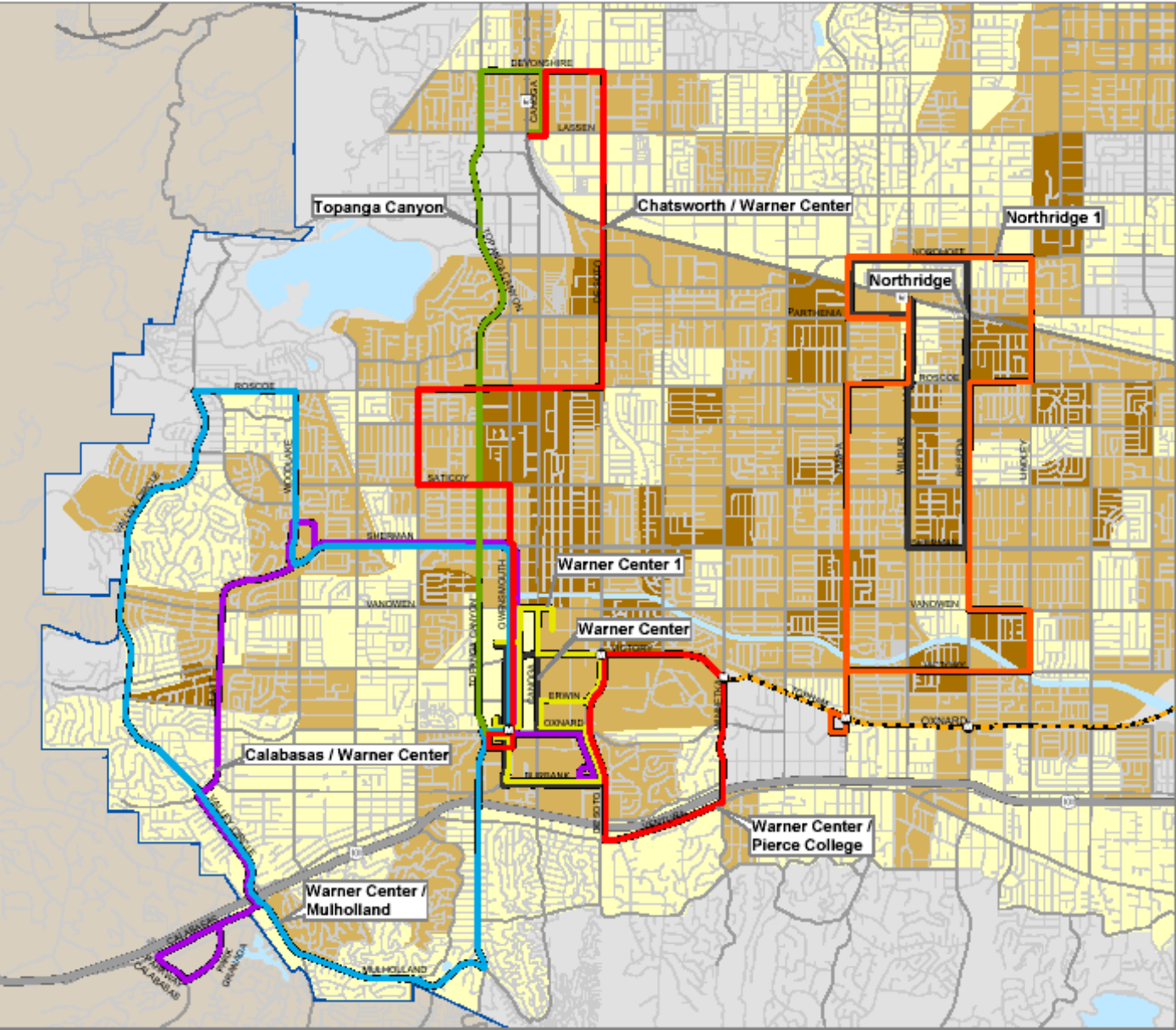


MTA Metro Rail



* Areas served by Downtown DASH are excluded from this study.

Data: LADOT, MTA, Thomas Brothers Maps, US Census, USGS



Route Proposals and DASH Potential Northeast Valley Area

Route	Potential Index
Sylmar / San Fernando	1.25
Van Nuys / Laurel Canyon	1.04
Hubbard/Sayre	1.01
Van Nuys Blvd. Local	1.01
Sylmar Circulator	0.91
Arleta-Pacoima Circulator	0.90

Community DASH Potential High Community DASH average score + Transit service under-supply areas

- Above Average
- Average
- Below Average

Existing DASH Service



Proposed DASH Service

- Sylmar / San Fernando
- Van Nuys Blvd. Local
- Sylmar Circulator
- Arleta / Pacoima Circulator
- Van Nuys / Laurel Canyon
- Hubbard / Sayre

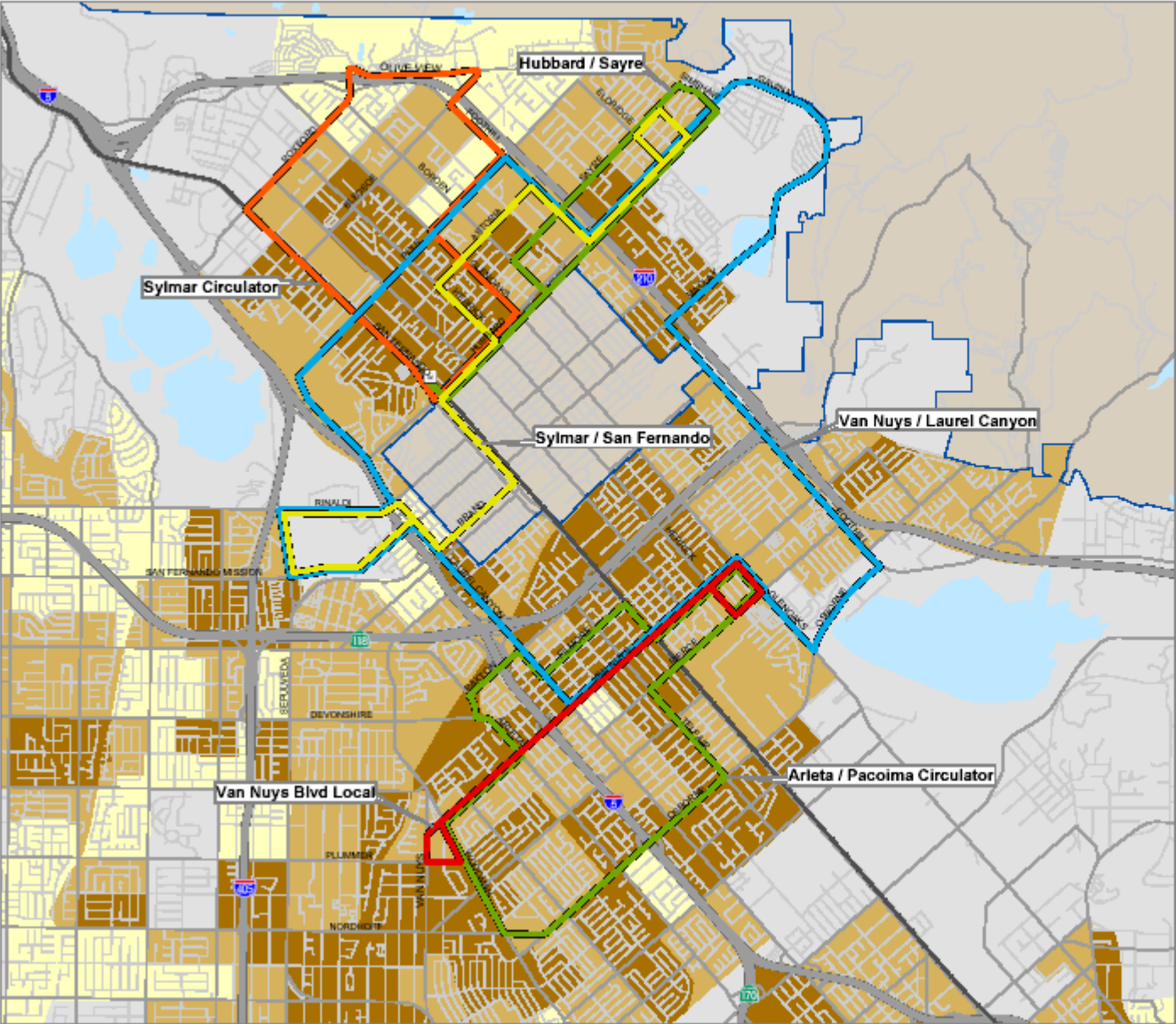
MTA Metro Rail

- Red Line
- Blue Line
- Green Line
- Gold Line
- Orange Line (Under Construction)
- Metro Rail Station
- Metrolink Station
- Metrolink

- City of Los Angeles
- Los Angeles County

* Areas served by Downtown DASH are excluded from this study.

Data: LADOT, MTA, Thomas Brothers Maps, US Census, USGS



Route Proposals and DASH Potential Index Southeast Valley Area

Route	Potential Index
Noho / Sun Valley	1.20
Van Nuys	1.11
Sun Valley	1.07
North Hollywood 1	0.97
North Hollywood 2	0.92
Studio City	0.89
Riverside Shuttle	0.72

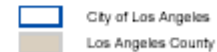
Community DASH Potential High Community DASH average score + Transit service under-supply areas



Existing DASH Service



MTA Metro Rail



* Areas served by Downtown DASH are excluded from this study.

Data: LADOT, MTA, Thomas Brothers Maps, US Census, USGS



Policy Issues

- **MTA Fare Integration for All Community DASH Routes**
- **Funding Constraints**
 - Ability to Implement New Community DASH Service Limited Without Additional Revenues
 - Reimbursement for MTA Pass Use Would Help
- **Formula Subsidies**
 - Require for MTA Replacement Service
 - Require for MTA Rail Feeder Service

Next Steps

- **January 28, 2005: Preliminary Findings Available to the public on the Project Web Site** www.tmdinc.net/clients/ladot
- **February 2005**
 - Brief MTA Planning Staff Re: Orange Line Connections
 - Six (6) Community Meetings
 - Three (3) MTA Sector Governance Board Meetings
- **March 2005: Report to Transportation Committee and City Council**



COMMUNITY *DASH*

LADOT

CITY OF LOS ANGELES
DEPARTMENT OF TRANSPORTATION