

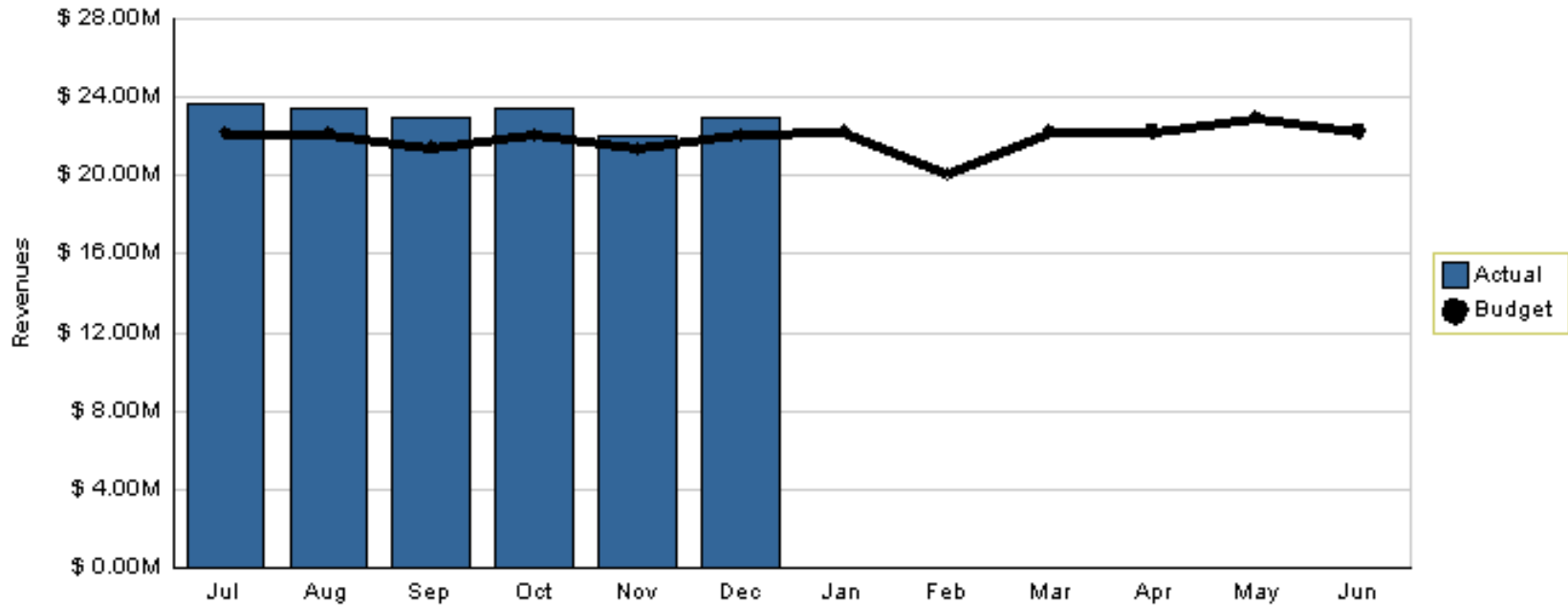
# Finance & Budget Committee

Monthly Oral Status Update on the  
FY 2006 Budget & Scorecard Results  
January 18, 2006



# FARE REVENUES

Total Fare Revenues - 2006



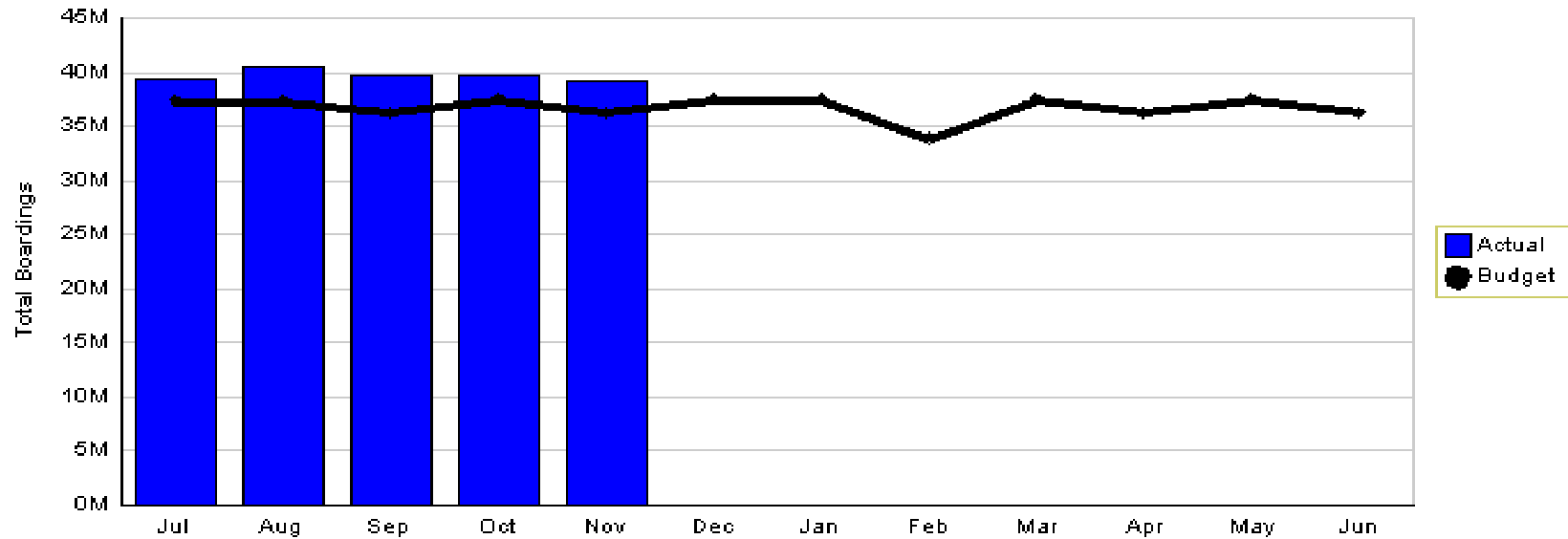
YTD through December 31, 2005

Actual: \$138.6 million vs. Budget: \$131.4 million

Variation: 5.5% or \$7.2 million over budget

# BOARDINGS

Total Boardings - 2006



YTD through November, 2005

Actual: 198.5 million vs. Budget: 184.7 million

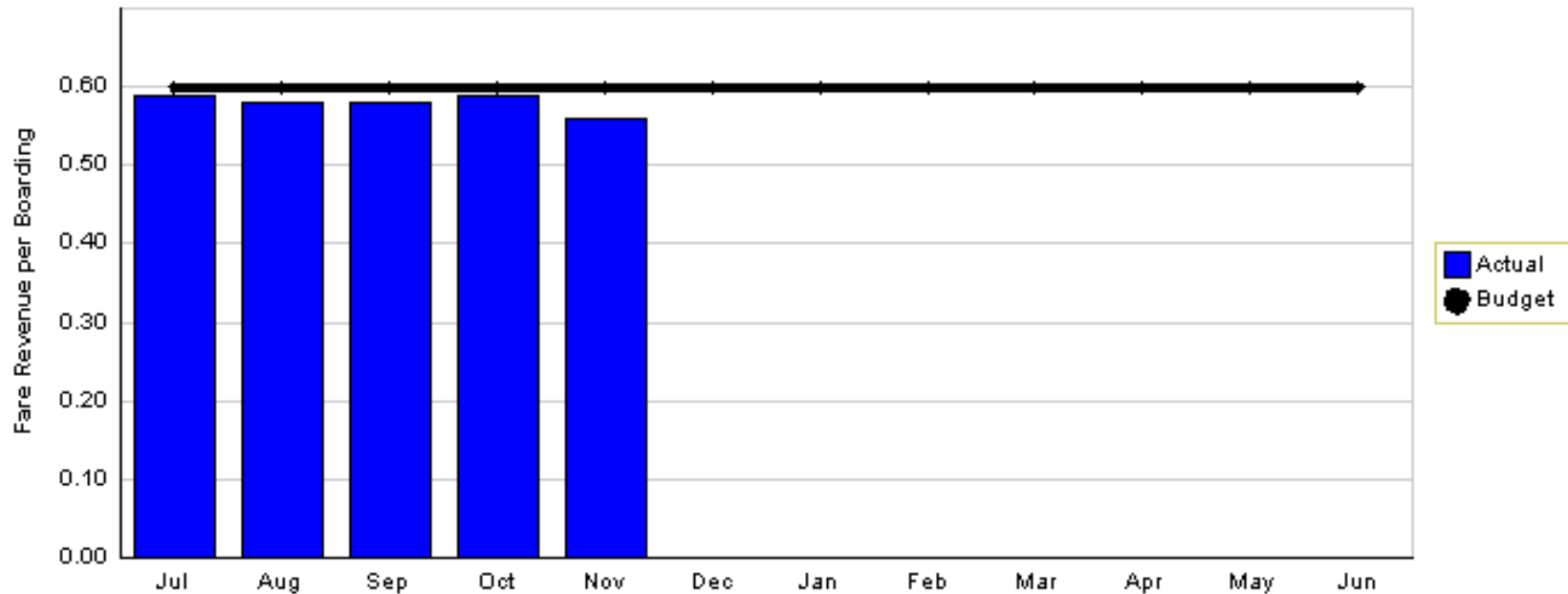
Variation: 7.4% or 13.8 million over budget

Actual: 198.5 million vs. Previous Year: 185.7 million

Variation: 6.9% or 12.8 million higher than last year

# FARE REVENUE PER BOARDING

Fare Revenue per Boarding - 2006



Actual: \$0.58 vs. Budget: \$0.60

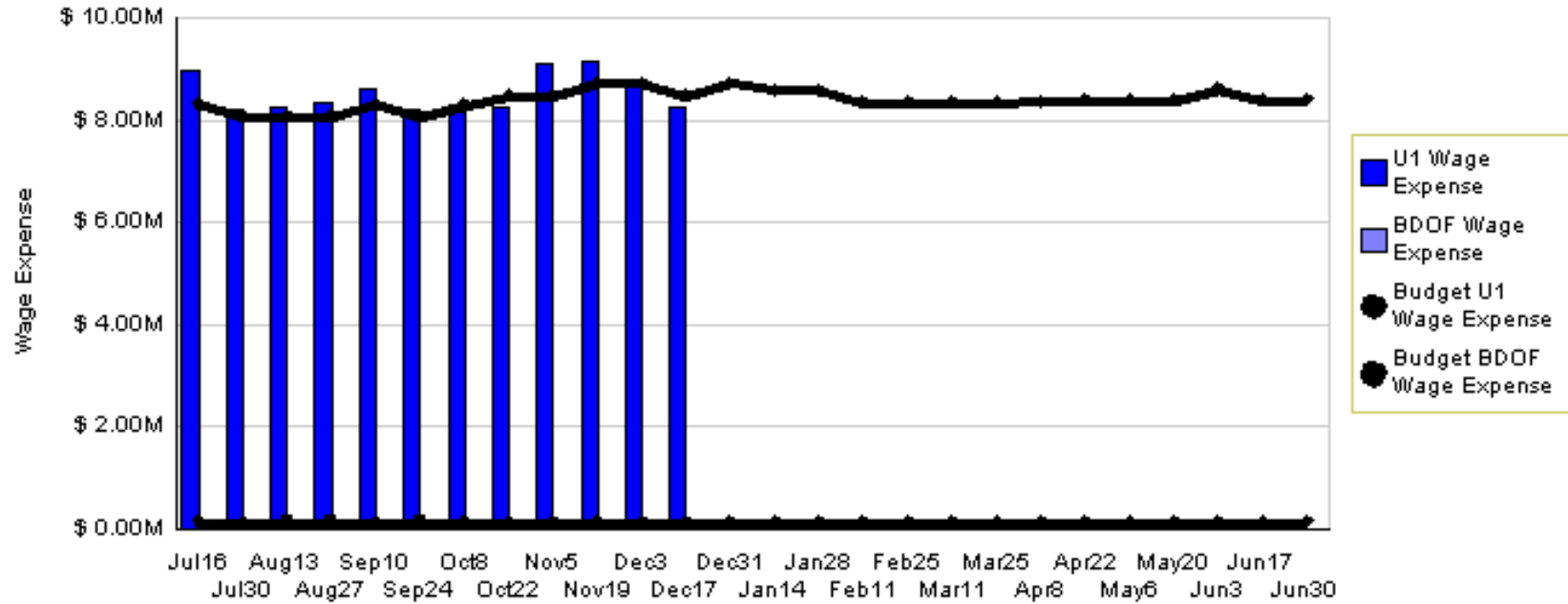
Variation: 3.3% under budget

Actual: \$0.58 vs. Previous Year: \$0.60

Variation: 3.3% under budget

# OPERATOR WAGE EXPENSES

Wage Expense and VHs - 2006



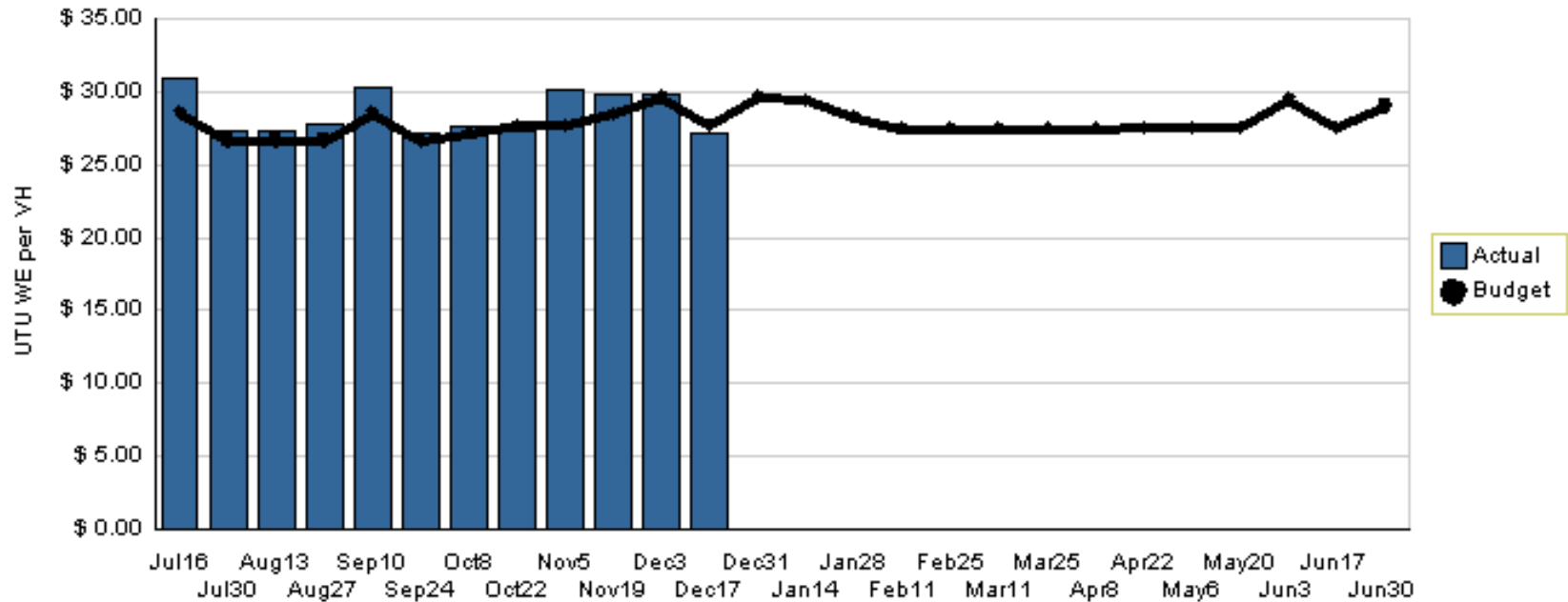
YTD through December 17, 2005

Actual: \$104.2 million vs. Budget: \$101.9 million

Variation: 2.2% or \$2.3 million over budget

# OPERATOR WAGE EXP. PER VEHICLE HOUR

OWE per VH - 2006



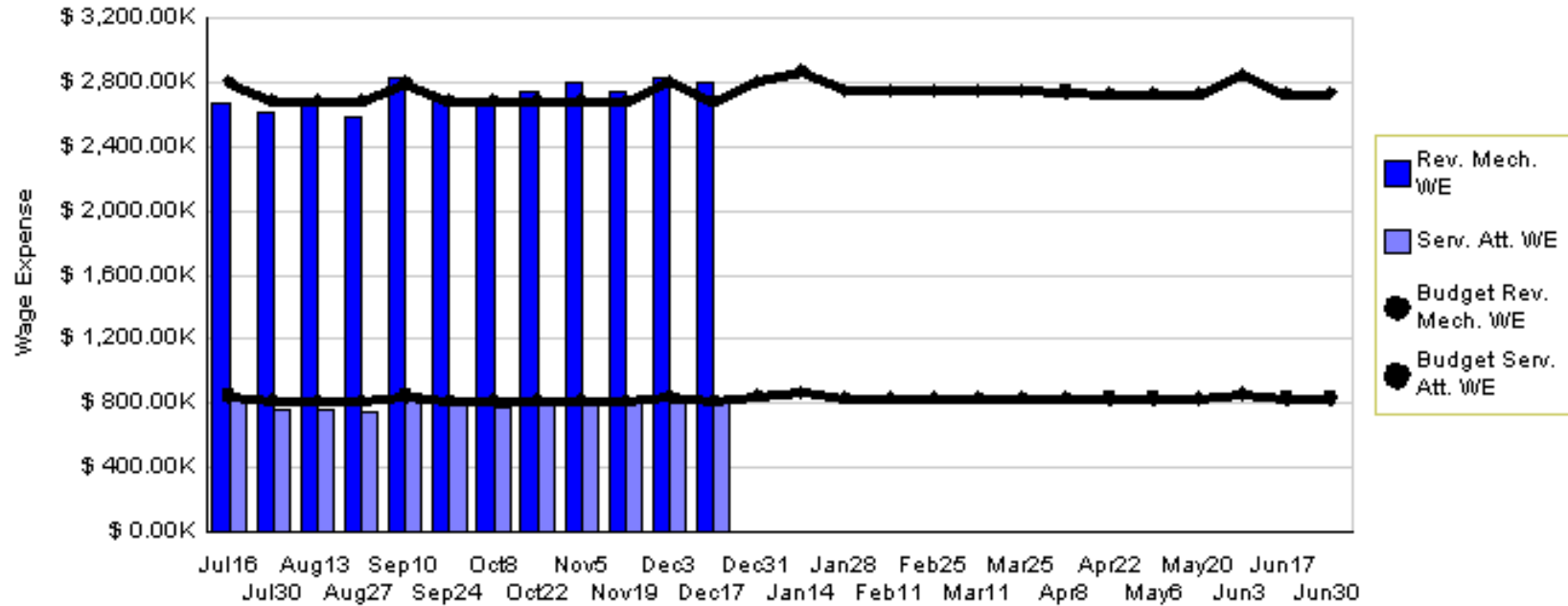
YTD through December 17, 2005

Actual: \$28.53 vs. Budget: \$27.71

Variation: 3% over budget

# ATU WAGE EXPENSES (SECTOR)

Wage Expense and VHS - 2006



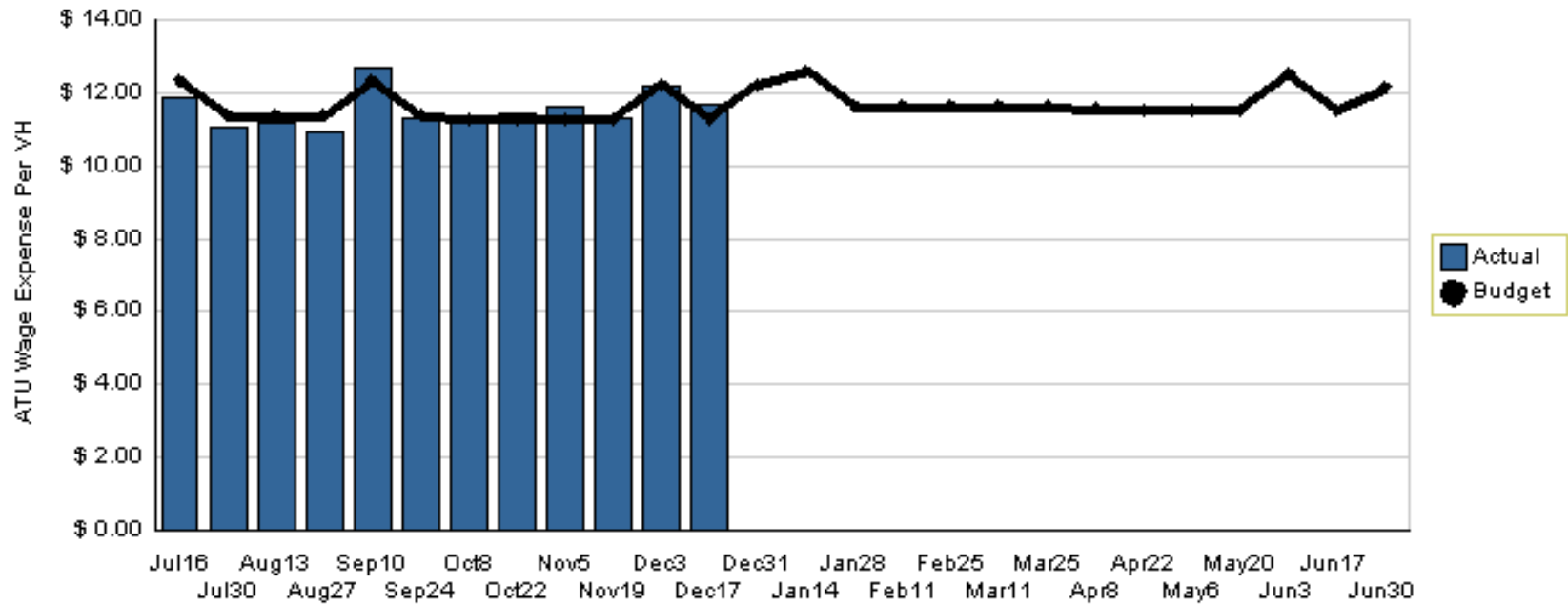
YTD through December 17, 2005

Actual: \$42.2 million vs. Budget: \$42.5 million

Variation: \$300,000 under budget

# ATU WAGE EXP. PER VEHICLE HOUR (SECTOR)

ATU Wage Expense Per VH - 2006



YTD through December 17, 2005

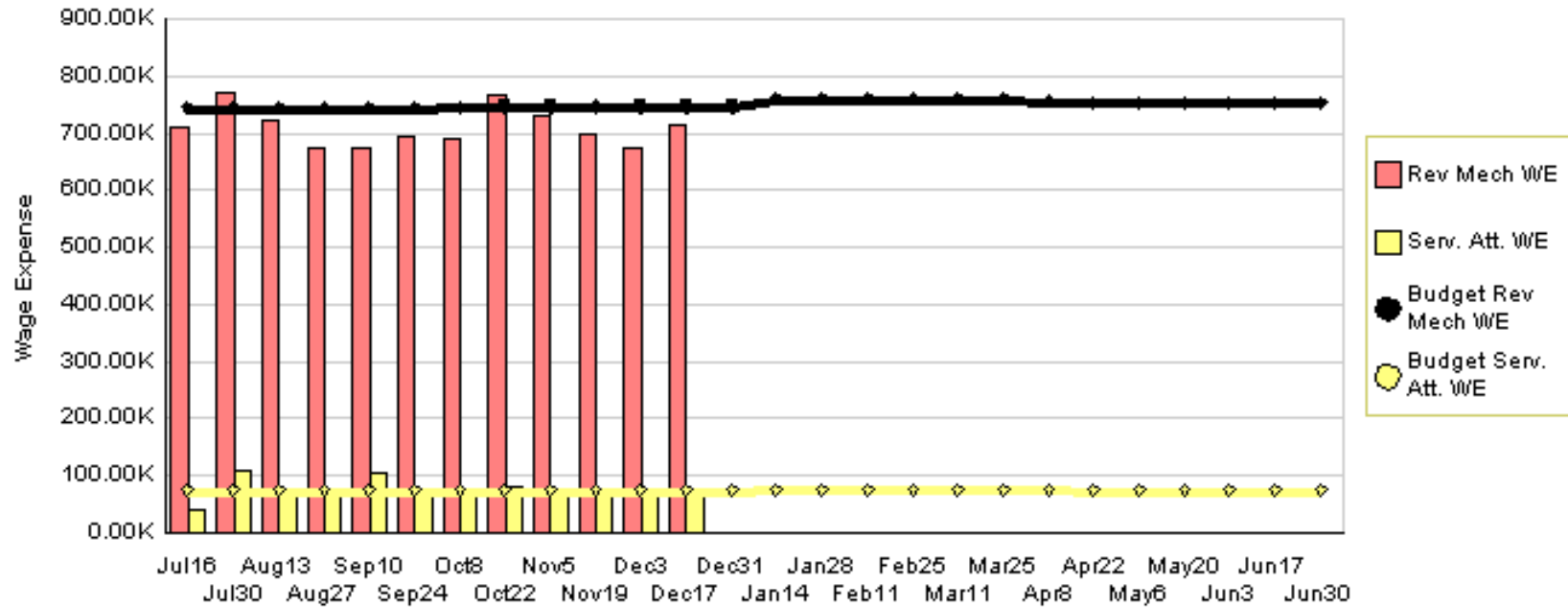
Actual: \$11.54 vs. Budget: \$11.56

Variation: slightly under budget



# ATU WAGE EXPENSES (NON-SECTOR)

Wage Expense - 2006



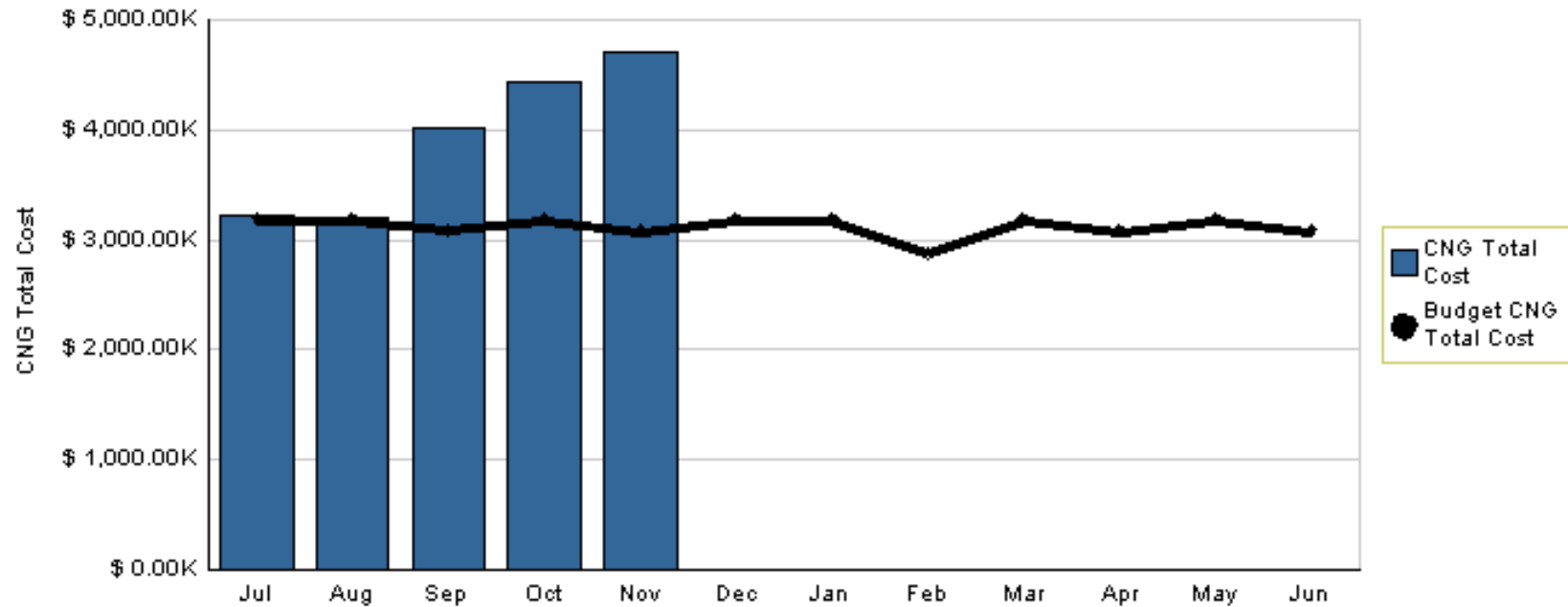
YTD through December 17, 2005

Actual: \$9.4 million vs. Budget: \$9.8 million

Variation: 4.4% or \$400,000 under budget

# COMPRESSED NATURAL GAS (CNG)

Therms, Cost, and Vhs - 2006



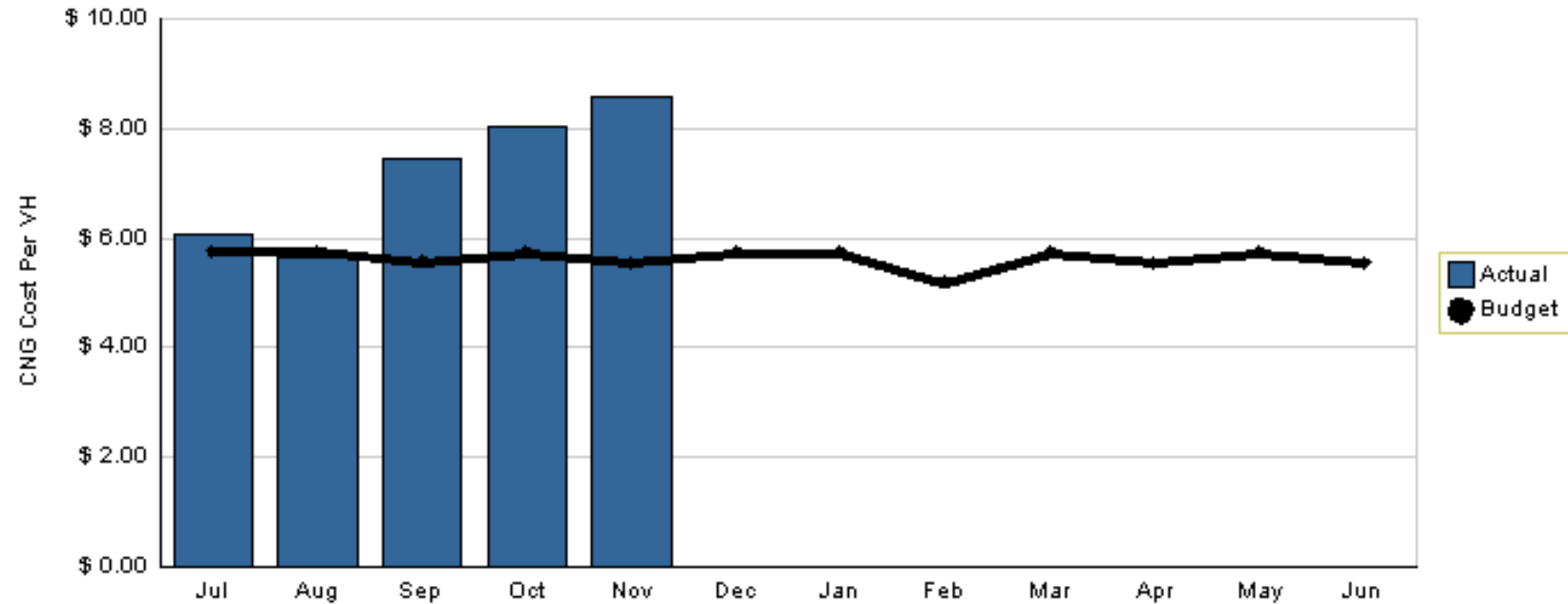
YTD through November, 2005

Actual: \$19.6 million vs. Budget: \$15.7 million

Variation: 24.5% or \$3.9 million over budget

# COST OF CNG PER VEHICLE HR.

CNG Cost Per VH - 2006



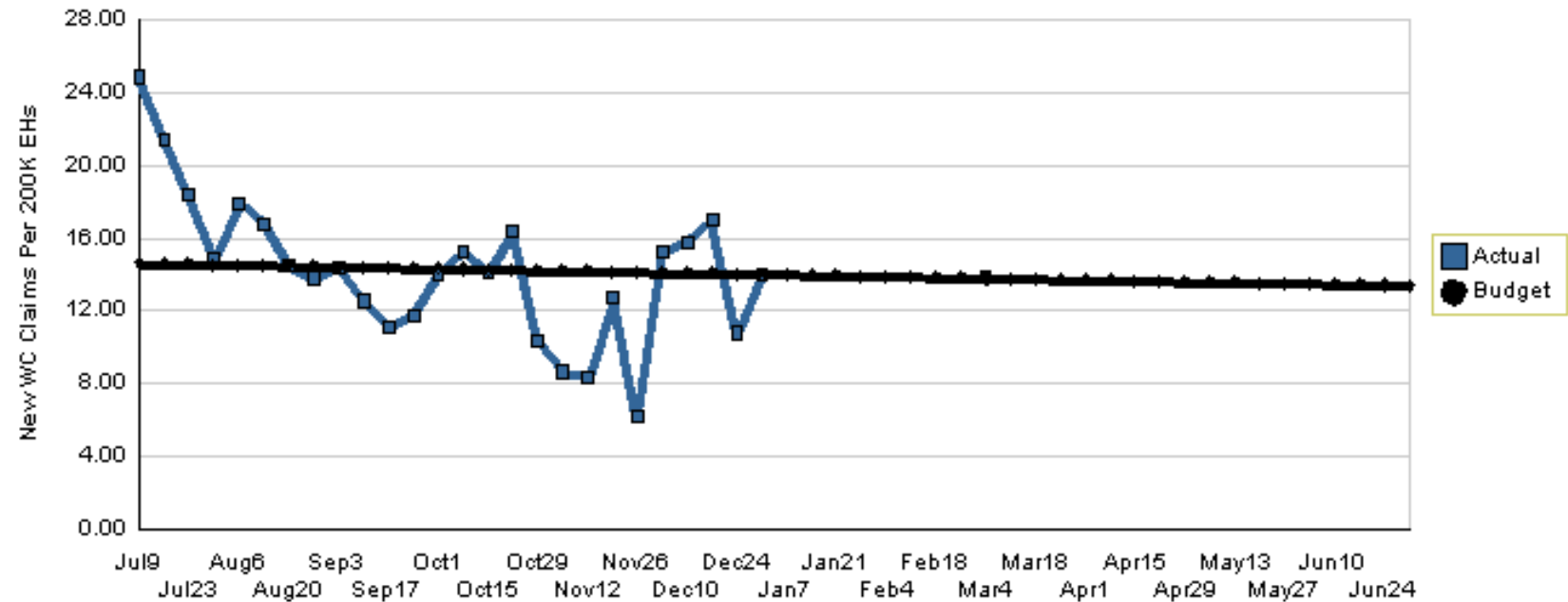
YTD through November, 2005

Actual: \$7.15 vs. Budget: \$5.68

Variation: 25.9% or \$1.47 over budget

# NEW WEEKLY WORKERS COMP. CLAIMS PER 200,000 EXPOSURE HOURS

Claims Per 200K EHS - 2006



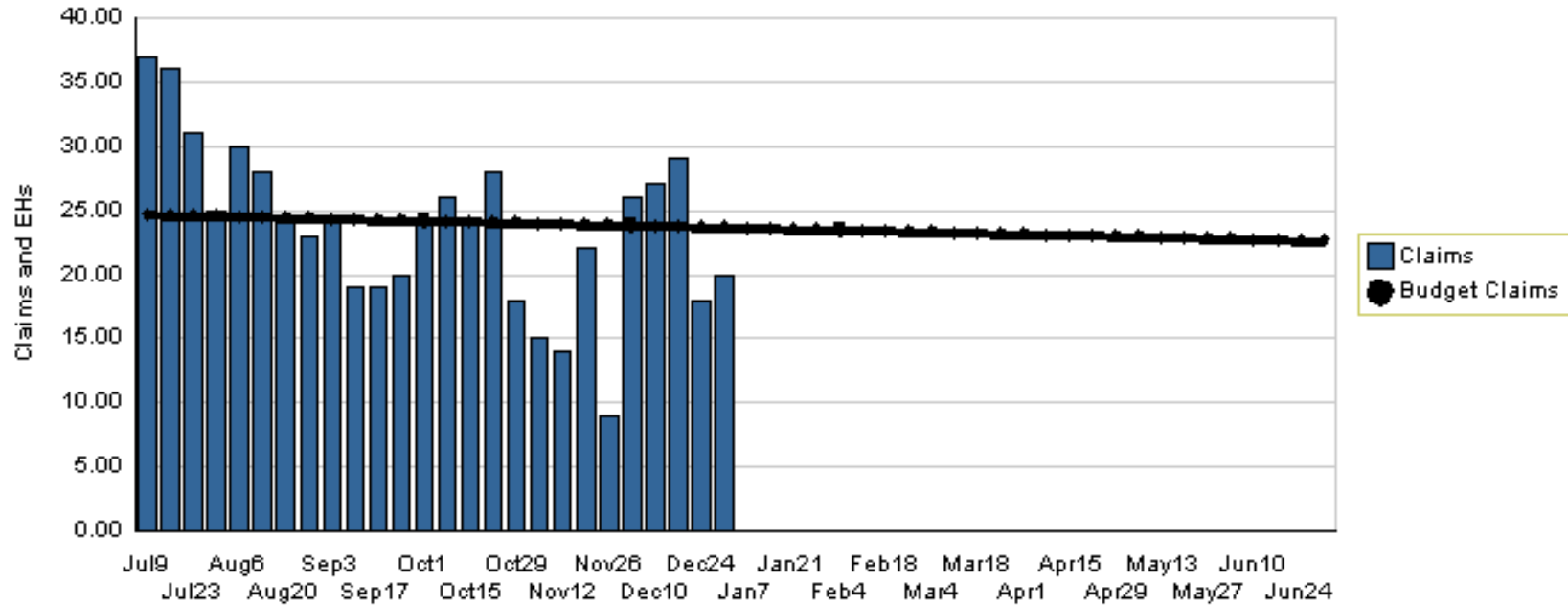
YTD through December 31, 2005

Actual: 14.28 vs. Budget: 14.33

Variation: slightly under budget

# TOTAL WORKERS COMP. CLAIMS

Claims and Exposure Hours - 2006



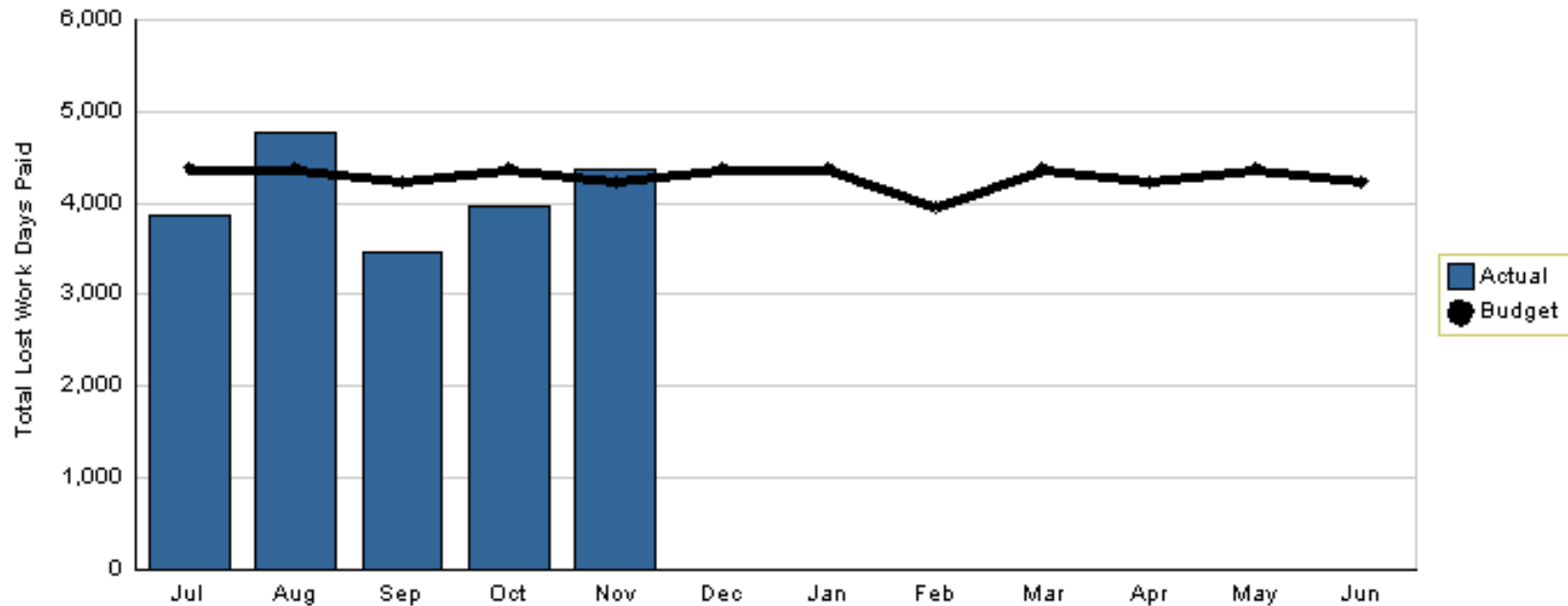
YTD through December 31, 2005

Actual: 616 vs. Budget: 629

Variation: 2.1% or 13 claims under budget

# LOST WORK DAYS (PAID)

Total Lost Work Days Paid - 2006



YTD through November, 2005

Actual: 20,438 vs. Budget: 21,620

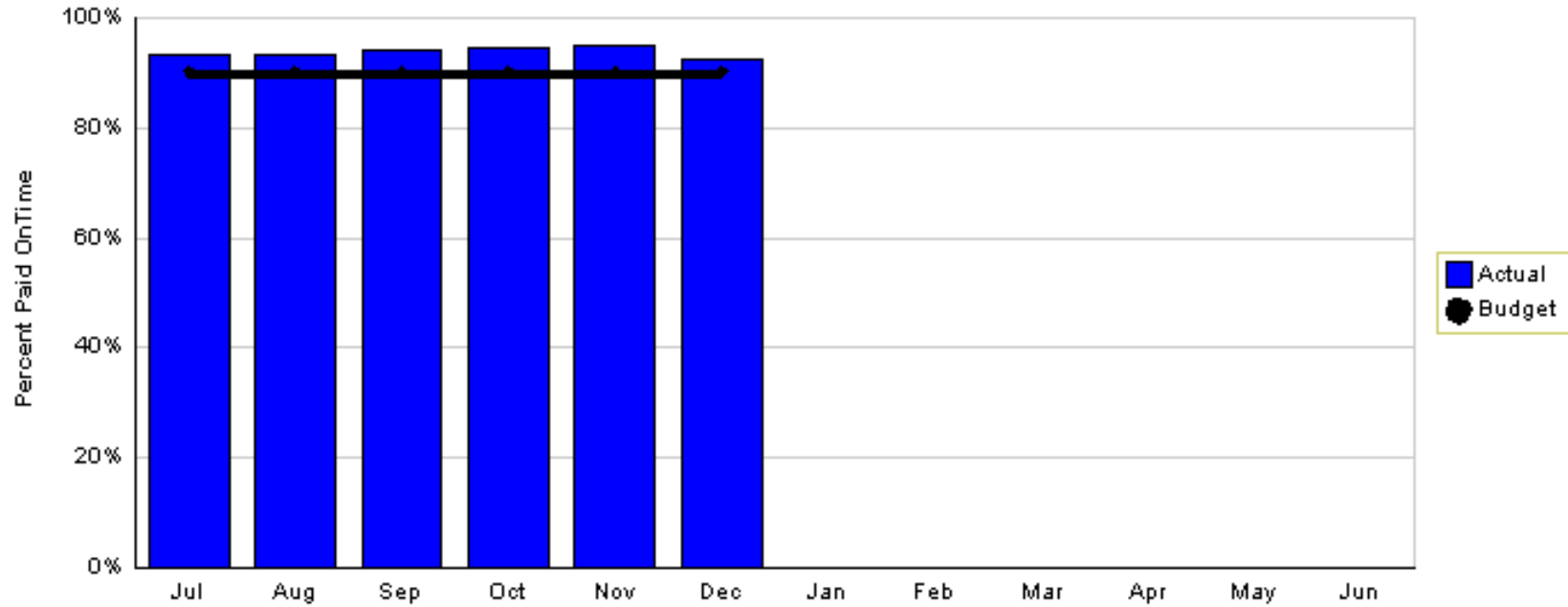
Variation: 5.5% or 1,182 days under budget

Actual: 20,438 vs. Previous Year: 27,232

Variation: 25% or 6,794 days fewer than the previous year

# BILL PAYING

% Paid OnTime - 2006



YTD through December 2005

Actual: 93% Target: 90%

Variation: Exceeded the 90% target