

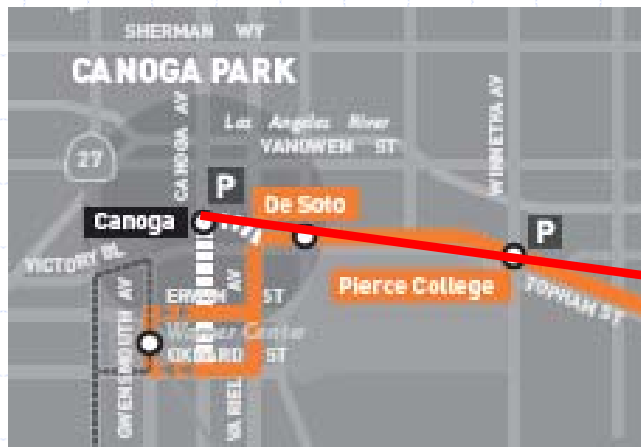
Item #25

# Chief Capital Management Officer Report

Construction Committee

October 2006

# Canoga Park and Ride Update



# Canoga Park and Ride

- ◆ Sully-Miller Contracting Inc. is approximately 80% complete and on schedule for Metro to open the new station and 611 space parking lot by December 2006
- ◆ Station platform concrete pours have been placed and contractor is working on platform terrazzo
- ◆ Continued installation of station electrical, wiring, and systems equipment
- ◆ Working on final landscaping and fencing

# Canoga Park and Ride



DWP crew installing cable for power pedestals prior to energizing station

# Canoga Park and Ride



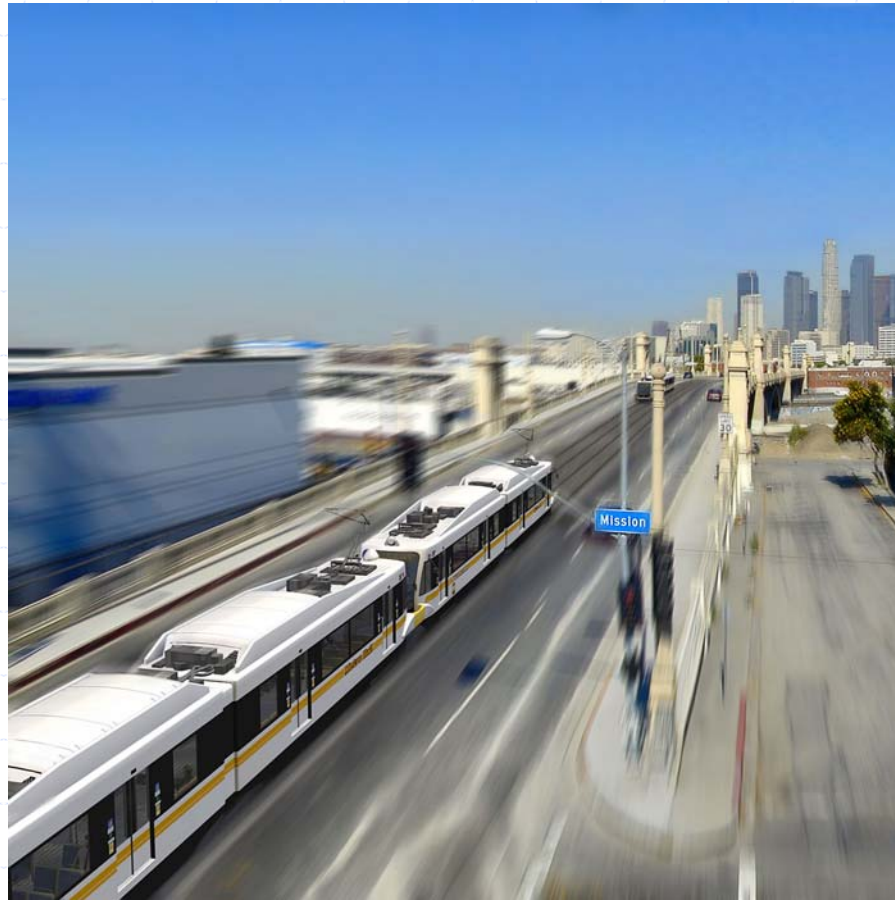
Installation of Variable Message Sign at station platform

# Canoga Park and Ride



Parking lot paving operations

# Metro Gold Line Eastside Extension



# Tunneling Activities



## Tunnel Drive & Rates

- Tunnel drive to date
  - EBT 5,626 feet
  - WBT 4,273 feet
- Best advance rate
  - EBT 90 feet/day
  - WBT 80 feet/day

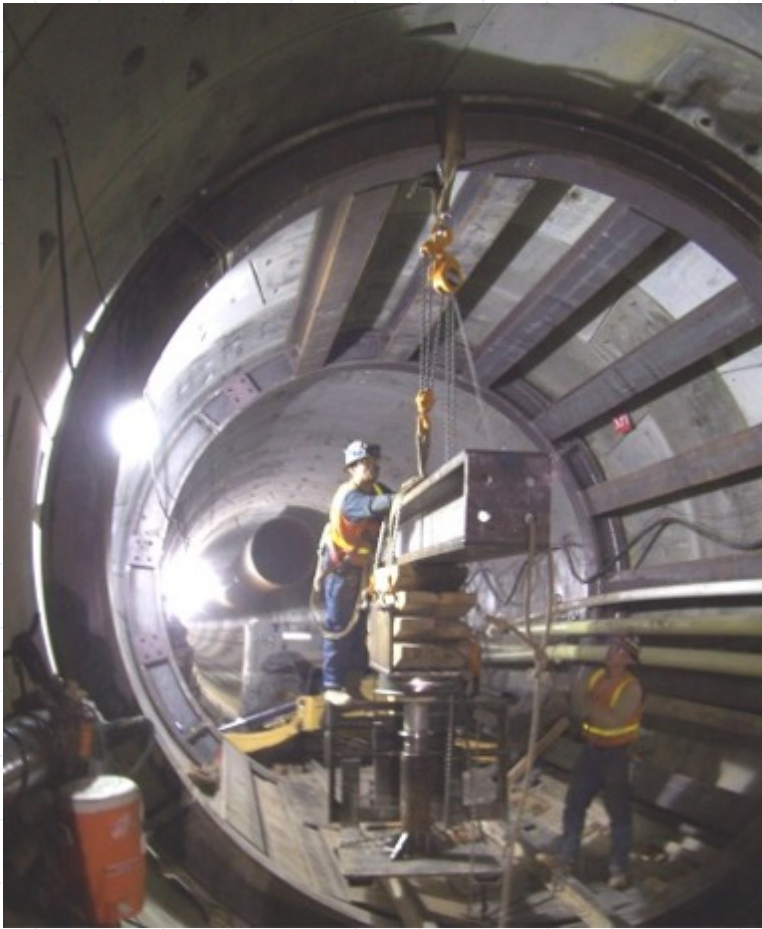
Both of the two 22-foot diameter Earth Pressure Balance Tunnel Boring Machines are progressing through the last tunnel section and the first machine is expected to arrive at 1<sup>st</sup>/Lorena in late November 2006.



**Metro**



# Tunneling Activities



- Preparatory work to begin excavating tunnel crosspassages has begun.
- Excavation of the first tunnel crosspassage is scheduled to begin in late October 2006.

# 101 Freeway LRT Bridge Overcrossing Caltrans Coordination



LRT Bridge Structure facing towards  
Union Station and Gateway Plaza.

- Caltrans contractor is forecasting the turnover of the LRT Bridge Structure to Metro in early March 2007.
- The turnover date is within the contractual window required for Metro's contractor to begin trackwork and systems installation.

# 1st Street – Alameda Street to Vignes St. Little Tokyo/Arts District Station



- Construction of the Little Tokyo/Arts District Station has begun.
- Sewer encasement work at 1<sup>st</sup> Street and Vignes Street was completed on schedule in September 2006.

# City of Los Angeles Coordination



- The City of Los Angeles has advertised the Phase II Bridge Girder Strengthening Contract.
- The City will receive construction bids on November 1, 2006.

# I-710 Freeway – Caltrans Coordination



- Seismic Retrofit of the bridge deck is underway.
- The center girder span will be removed and replaced to support the LRT guideway.
- The bridge work is scheduled to be completed by the beginning of 2007.

# 3rd St. – Coordination with County of LA



Street improvements are being constructed along 3<sup>rd</sup> Street near the Mednik Avenue intersection by Metro and the County of Los Angeles.

# Construction Activities Pomona Avenue/Atlantic Boulevard



In response to the community concerns expressed at the last RAC Meeting, Metro's contractor closed access from Telford Street and restricted access to Pomona Avenue.

# 1st Street – Indiana Street to Lorena St. Construction Activities



Utility relocation work along the south side of 1<sup>st</sup> Street continues and the lane closure plan that was presented to the community in August 2006 is working effectively.



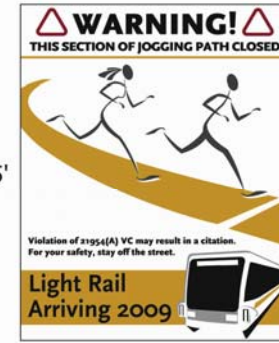
# 1st Street/Lorena Street Construction Activities



- XXXX

# 1st Street/Lorena Street Construction Activities

Thank you for your patience! Metro Gold Line Eastside Extension construction activities at 1st/Lorena will impede your ability to jog around the entire path. We apologize for this temporary inconvenience. On approach to the work zones at 1st/Lorena and at 1st/Fresno, joggers will be redirected back in the opposite direction. It is our intent to do this work as quickly and safely as possible. Weather permitting, we will have your new jogging path rebuilt within one year. For questions on the Metro Gold Line Eastside Extension, please contact your Community Relations team at (213) 922-2259.



Scale: 1" = 1'



Scale: 1" = 1'

A portion of the jogging path will be closed starting mid-October 2006 for approximately one year to allow the removal of the Tunnel Boring Machines and to complete the construction of the East Portal.



# Metro and LAUSD Coordination

## Indiana Station/Ramona Opportunity H.S.



Indiana Light Rail Transit Station



LAUSD Ramona Opportunity High School

- LAUSD received the Re-build of Ramona Opportunity High School construction bids on October 10, 2006. The lowest bid price was \$32.9 million.
- LAUSD and Metro are evaluating the construction bid amount against the Total Project Cost Estimate for the school project.



**Metro**

# Metro and LAUSD Coordination

## Indiana Station/Ramona Opportunity High School



3<sup>rd</sup> Street and Indiana Street Intersection

- Metro has demolished the structures on six of the nine Alma Avenue properties that are required for the Land Exchange Agreement between Metro and LAUSD.
- Demolition on the three remaining parcels is underway.



End of Presentation