

Chief Capital Management Officer Report

November 15, 2007

Project Description

- 8.6 miles of light rail
- 1.3 miles shared track with Metro Blue Line
- 10 stations
- 3 park-and-ride lots
- 42,900 daily riders estimated in 2025
- Completion in 2010
- Current Budget of \$663 million

Project Status

- Completed traffic rerouting along Exposition Blvd. to support installation of 61” waterline jacking pit.
- Continued drilling and installing secant and CIDH piles for trench wall construction.
- Continued utility relocations to support trench construction
- Completed temporary lighting along Flower Street between Washington and 23rd Street
- Completed negotiations on Work Package B1, Utility Improvements Vermont Avenue to Hardcourt Avenue

Project Status (continued)

- Received 95% design for Work Package A5, Flower/Adams Overcrossing Roadway and Structures
- Received 85% design for Work Package C4, National Bridge South
- Began negotiations for Work Package B2, Corridor Improvements Vermont Avenue to Harcourt Avenue

Project Status (continued)

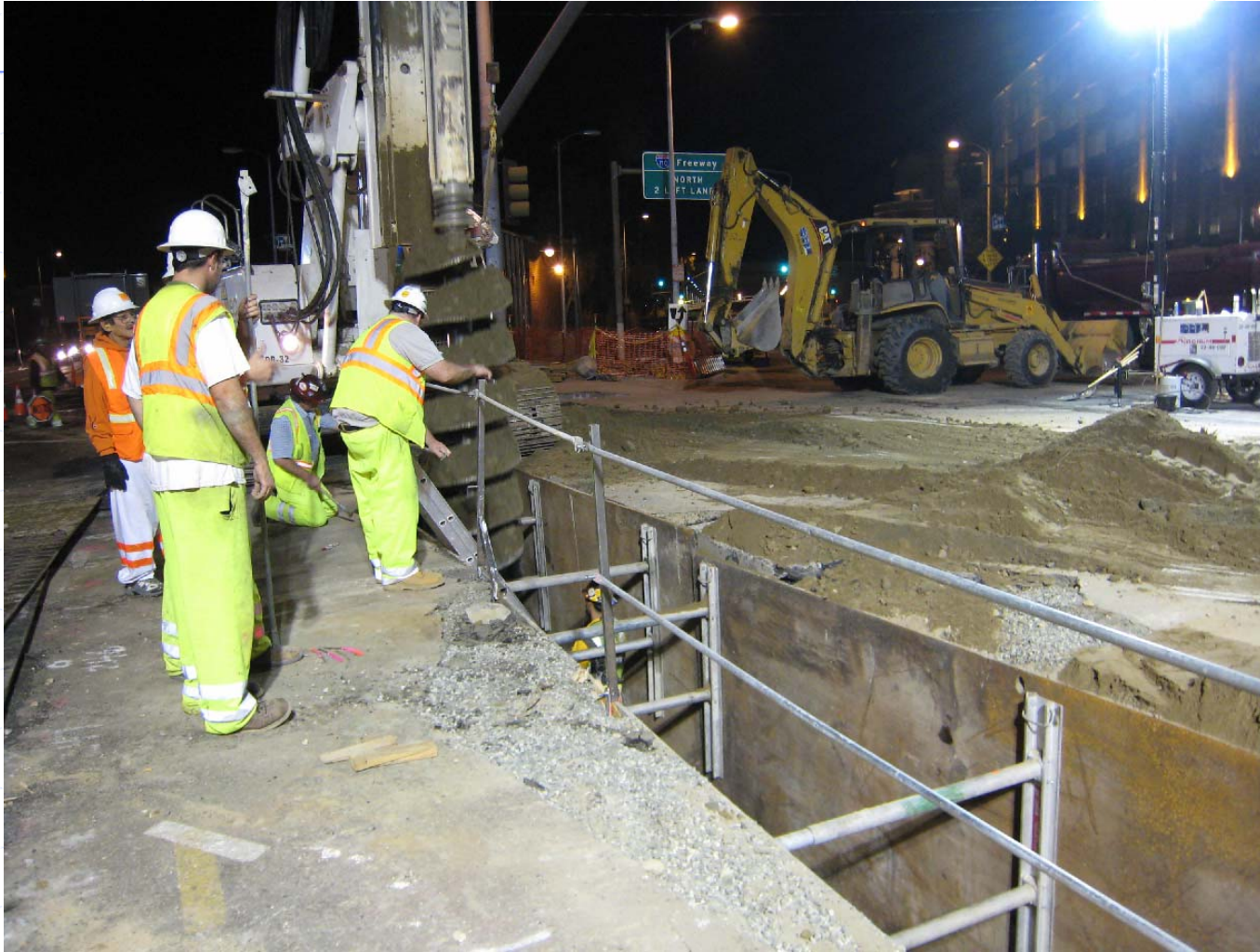
- CPUC Commissioner ruled that the Farmdale application will proceed to Evidentiary Hearings
 - Public Participation Hearing held at Dorsey High School on November 5th
 - Evidentiary Hearings scheduled for November 6 & 7 were postponed until January 2008
- Evidentiary Hearings are not required for the other 9 crossing applications
 - Proposed decision scheduled for November 20, 2007
 - Commission decision expected December 20, 2007

Project Status (continued)

- The Board voted unanimously to have staff study grade separation alternatives at Farmdale Avenue
 - Cut-and Cover grade separation
 - Aerial grade separation
 - Pedestrian Over and Undercrossing with Farmdale open to traffic
 - Pedestrian Over and Undercrossing with Farmdale closed to traffic
 - Look at other safety alternatives which include slowing the trains to 15 mph and providing additional security and crossing guards



Excavating for Sanitary Sewer



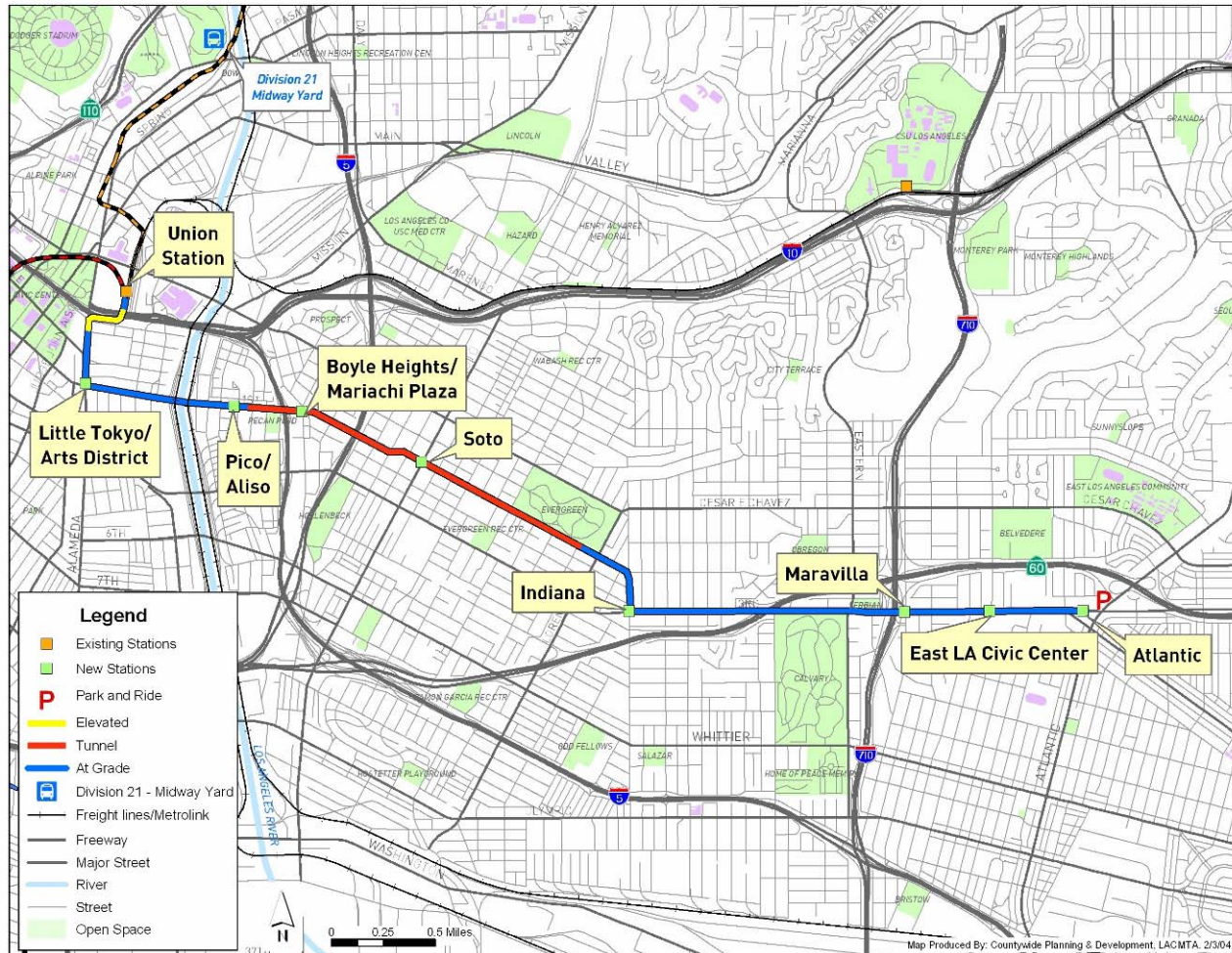


I-405 Project Status

- Ten mile northbound HOV lane from I-10 to US 101.
- Metro and Caltrans will utilize design-build approach to expedite project delivery.
- Metro will work with Caltrans to conduct community outreach.
- Preferred Alternative is expected to be selected this month.
- Approval of Record of Decision expected in early 2008.
- Design/Build contract award expected in late 2008/early 2009.



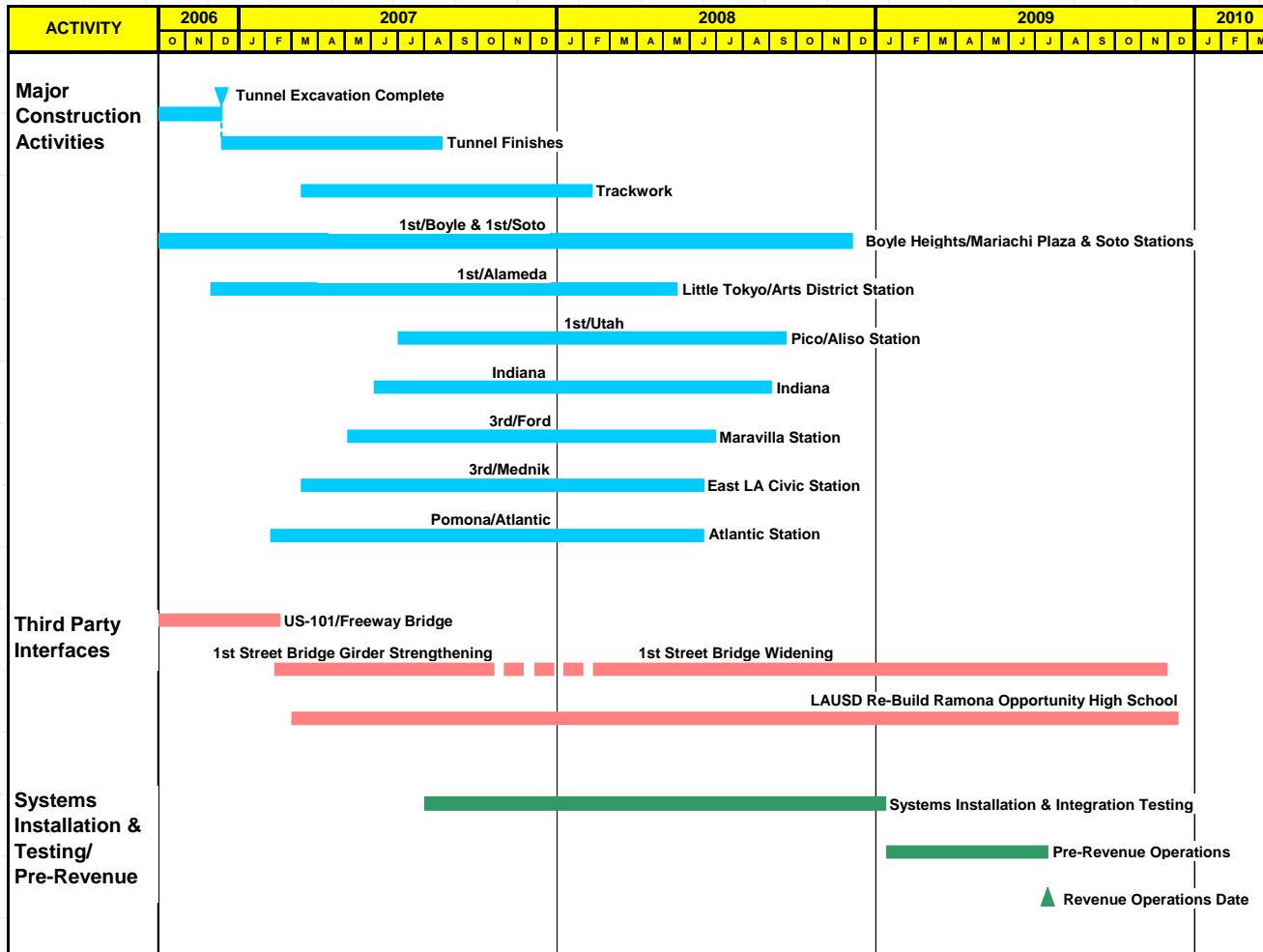
Metro Gold Line Eastside Extension Project Update November 2007



Metro

**Gold
Line**

Metro Gold Line Eastside Extension Overview of Major Construction Activities



Metro

Gold Line

Metro Gold Line Eastside Extension Light Rail Transit Stations



LittleTokyo/
Arts District



Pico/Aliso



Boyle Heights/
Mariachi Plaza



1st/Soto



Maravilla



Indiana Station



East Los Angeles
Civic Center



Pomona/Atlantic

Construction is underway on all of the Light Rail Transit Stations.



Metro



**Gold
Line**

Metro Gold Line Eastside Extension Underground Construction 1st/Boyle and 1st/Soto Stations



1st /Boyle Mariachi Plaza Station - Concrete for upper mezzanine level walls are underway. All lower level walls have been completed at the track level.



1st /Soto Station – Work on the track level equipment rooms has begun.

Metro Gold Line Eastside Extension At-Grade Station Construction



Little Tokyo/Arts District Station



Pico/Aliso Station

Construction of the Little Tokyo/Arts District Station platform is complete and the excavation for the construction of the Pico/Aliso Station near 1st/Utah has been completed.

Metro Gold Line Eastside Extension At-Grade Station Construction



Indiana Station



Maravilla Station

Construction of the Indiana Station and the Maravilla Station at 3rd/Ford is well underway.

Metro Gold Line Eastside Extension At-Grade Station Construction



East LA Civic Center Station



Pomona/Atlantic Station

Work on the station platforms at the East LA Civic Center and Pomona/Atlantic stations involving the installation of Overhead Contact System pole foundations and station canopy construction has begun.

Metro Gold Line Eastside Extension At-Grade Guideway and Street Improvements



Utilities Relocation and Street Widening – Construction along 1st Street between Lorena Street and Indiana Street involving sidewalks, curbs, gutters and street paving along the curb lanes will be completed in November 2007. Track guideway work along the center of 1st Street began in late October 2007.

Metro Gold Line Eastside Extension Third Party Coordination 101 Freeway LRT Bridge at Union Station



The 101 Freeway LRT Bridge was completed on-time earlier this year by Caltrans to allow the construction to begin for the installation of trackwork at the future connection to the Pasadena Gold Line at Union Station.



Metro

Gold
Line

Metro Gold Line Eastside Extension Third Party Coordination 3rd Street I-710 Freeway Overcrossing



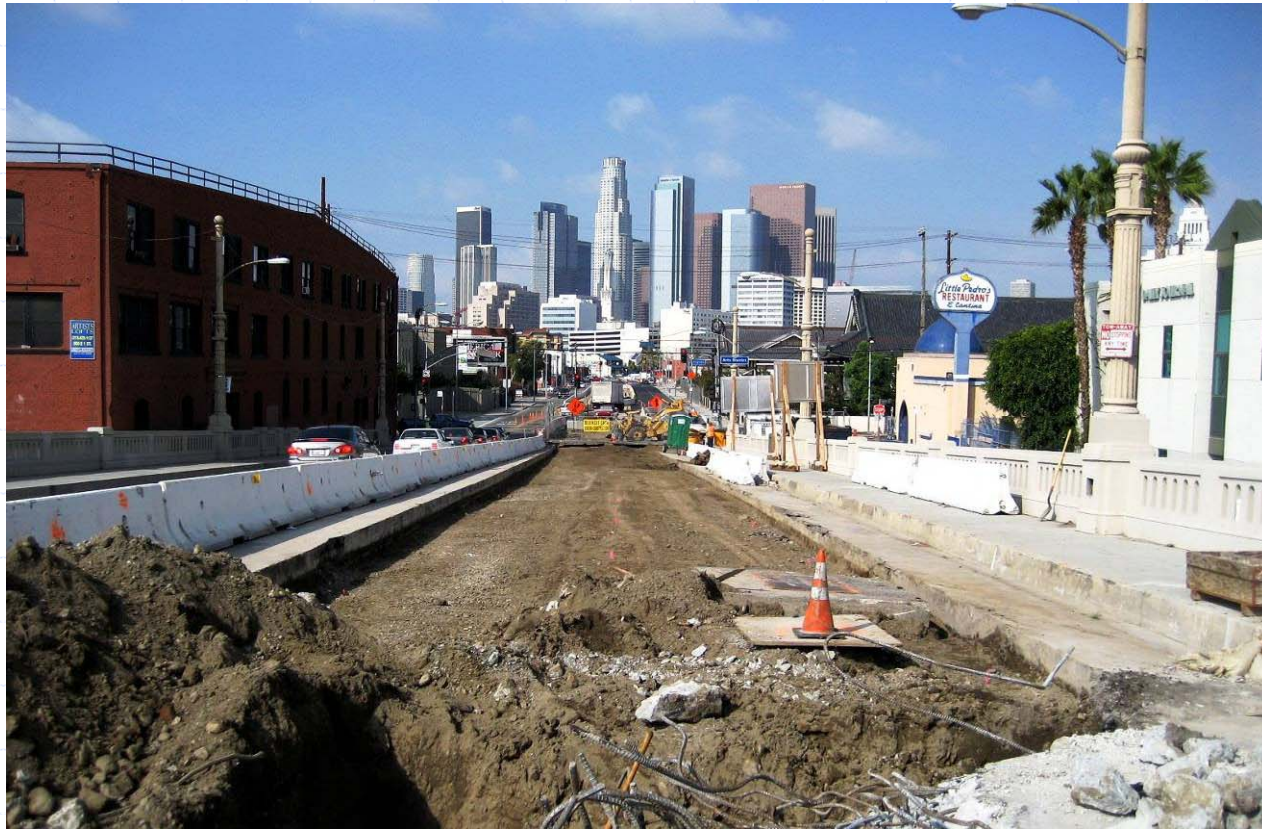
Metro's contractor completed the I-710 seismic retrofit and structural upgrades on-time to allow Caltrans to complete their freeway median and shoulder work. Handover involved coordinating the concurrent activities of two contractors.

Metro Gold Line Eastside Extension Third Party Coordination LA River 1st Street Bridge



View of the LA River 1st Street Bridge prior to bridge widening.

Metro Gold Line Eastside Extension Third Party Coordination LA River 1st Street Bridge



The City of Los Angeles Phase II Girder Strengthening work is substantially complete, which allowed Metro's contractor to begin track guideway construction in early October 2007.

Metro Gold Line Eastside Extension Third Party Coordination LA River 1st Street Bridge



Metro's contractors worksite is confined between the traffic barrier and the north side of the bridge. Metro has implemented worksite traffic control plans to accommodate two-way traffic along the south side of the bridge as requested by the City of Los Angeles.

View of the LA River 1st Street Bridge looking east.



Metro

**Gold
Line**

Metro Gold Line Eastside Extension



End of Presentation