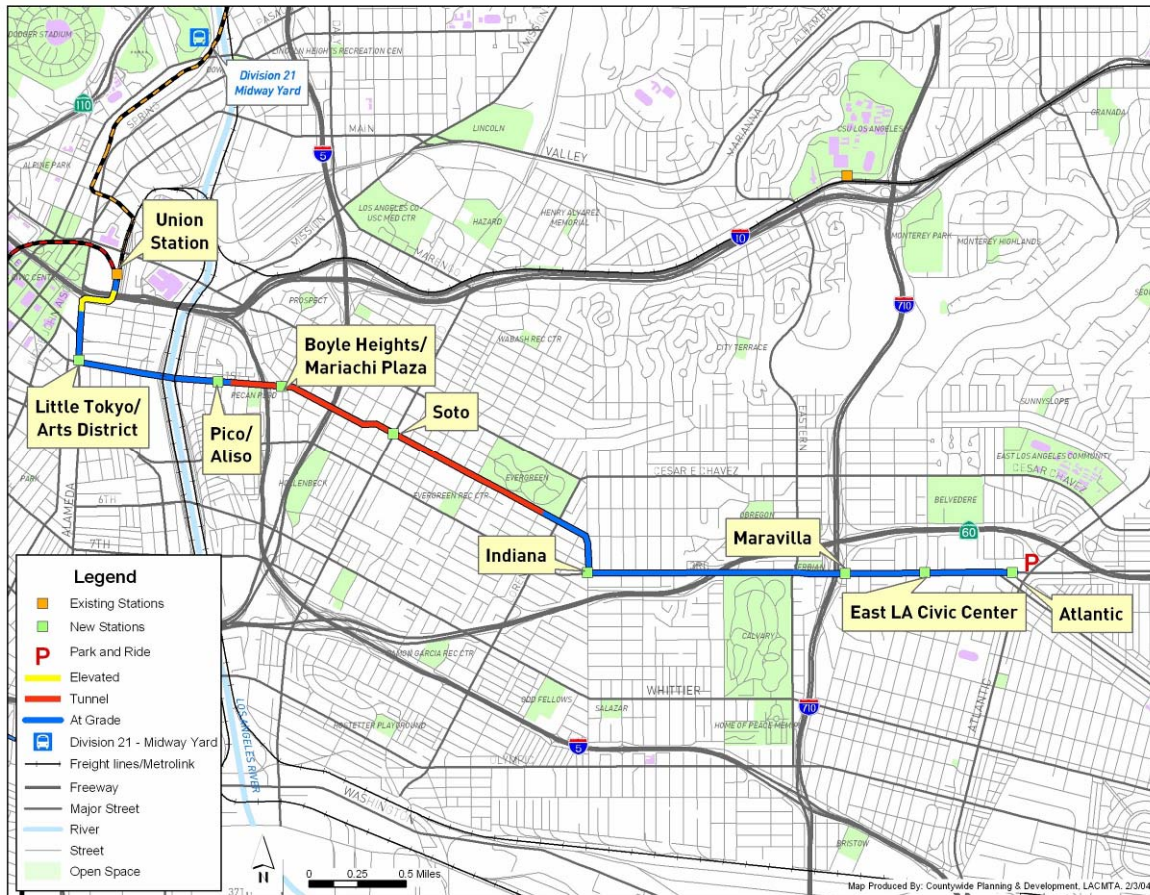


# Chief Capital Management Officer Report

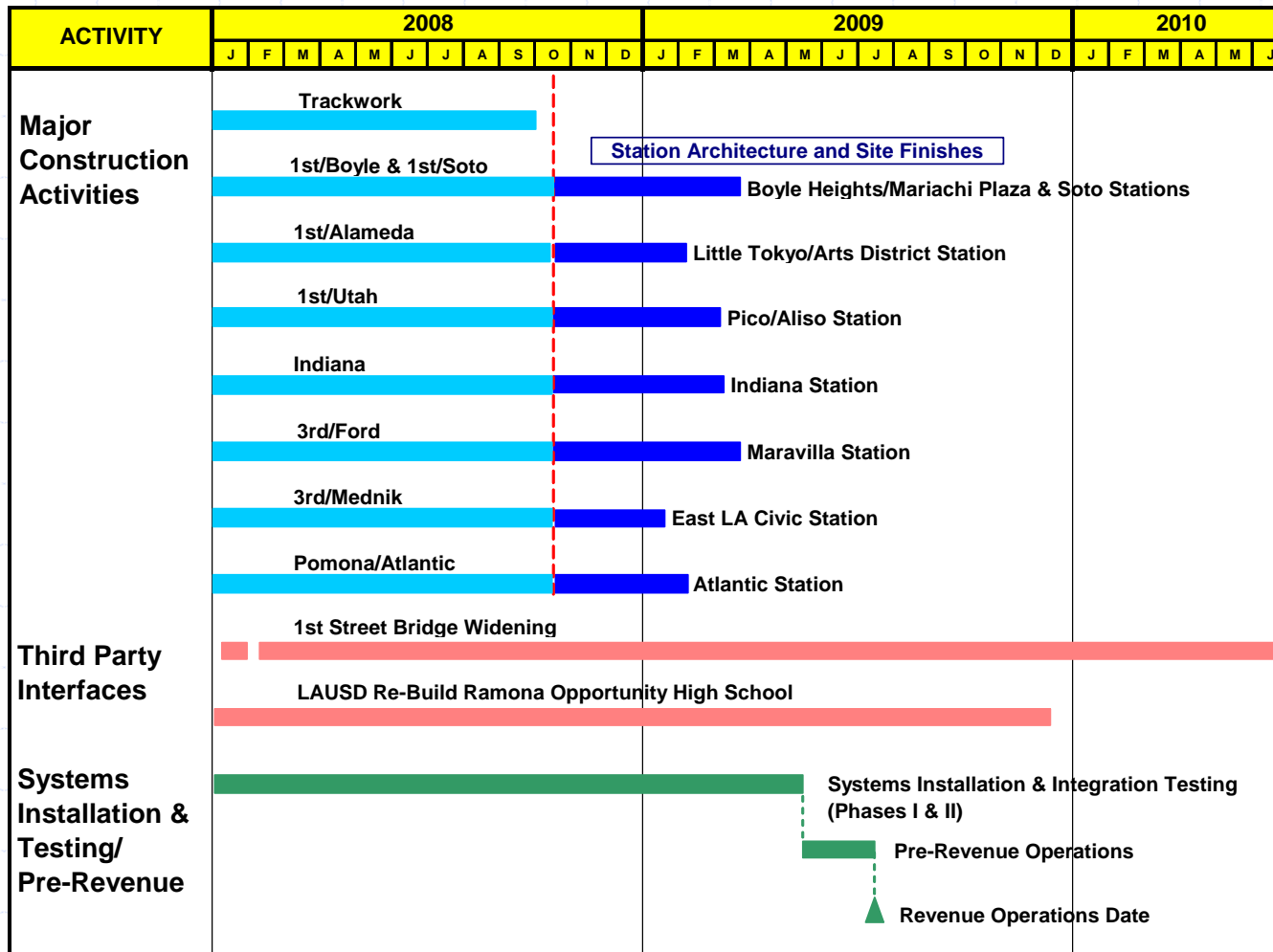
October 16, 2008

# Metro Gold Line Eastside Extension Project Update October 2008



- 6 Mile Alignment
- 1.7 Miles of Tunnel
- 8 Stations (6 At-grade & 2 Underground)
- Park & Ride Facility
- Direct Connection to the Pasadena Metro Gold Line
- \$898.8 million
- On-Time/Within Budget
- Opens in 2009

# Metro Gold Line Eastside Extension Overall Construction Progress



# Metro Gold Line Eastside Extension Overall Construction Progress



- Construction began in July 2004. As of October 2008, the Project is over 89% complete.
- The Contractor has worked over 3.5 million hours without a lost-time accident.
- Trackwork installation along the entire six-mile alignment is complete.
- Construction of the two underground stations at 1st/Boyle and 1st/Soto is 83% complete.
- Construction of the six at-grade stations is 63% complete.
- Systems installation is 76% complete.



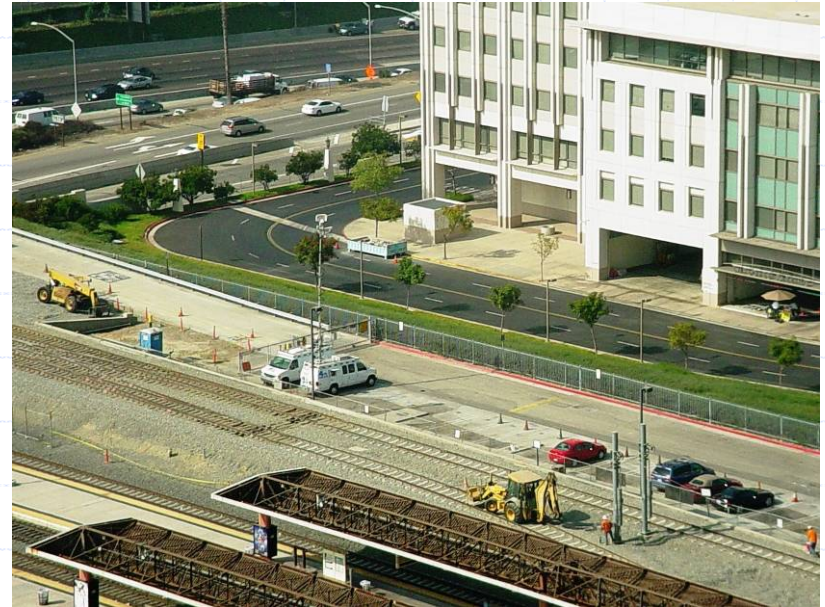
Metro

Gold  
Line

# Metro Gold Line Eastside Extension 101 Freeway Light Rail Transit Bridge Union Station



View looking southwest from Union Station towards Downtown Los Angeles.



The tie-in to the Pasadena Gold Line tracks was completed in September 2008.

# Metro Gold Line Eastside Extension Trackwork Installation 1<sup>st</sup>/Alameda to Union Station



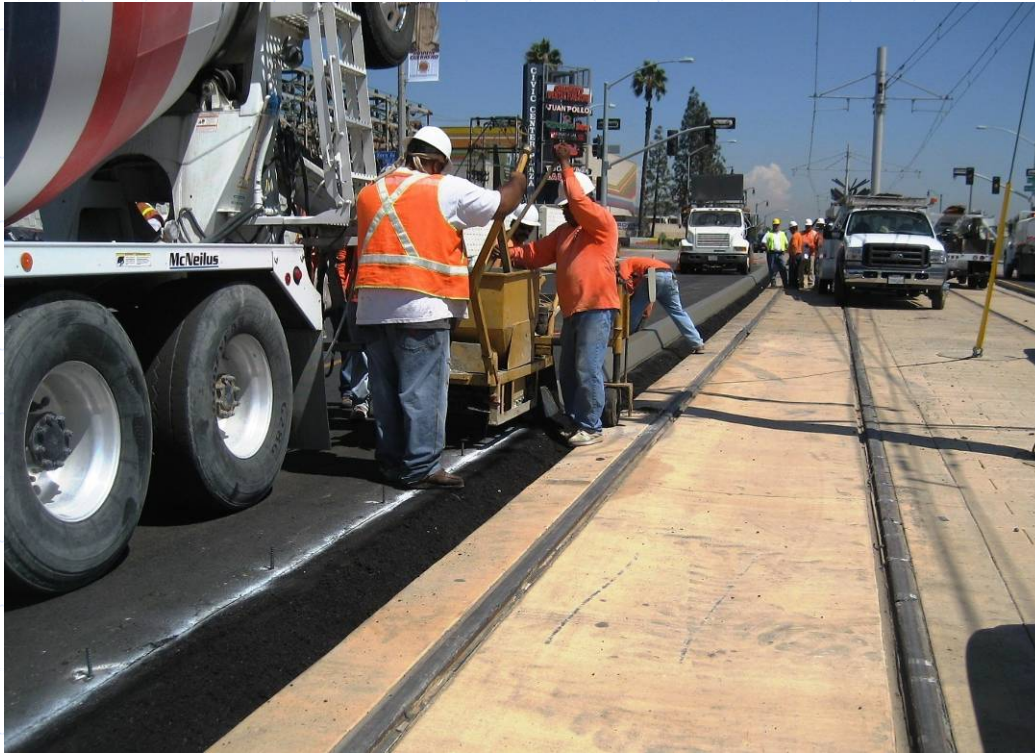
Trackwork and guideway construction from 1<sup>st</sup>/Alameda to Union Station.



Track cross-overs were installed at Union Station to tie-in to the Pasadena Gold Line.

All trackwork construction along the entire six-mile alignment has been completed.

# Metro Gold Line Eastside Extension Track Guideway, Street Resurfacing and Catenary Overhead Contact System (OCS)



Major construction along the track guideway, including stringing of the catenary wires for the Overhead Contact System and the “Grind & Overlay” street resurfacing for designated portions of 3rd Street is substantially complete.



**Metro**



**Gold  
Line**

**7**

# Metro Gold Line Eastside Extension Light Rail Transit Stations



LittleTokyo/  
Arts District



Pico/Aliso



Boyle Heights/  
Mariachi Plaza



1st/Soto



Maravilla



Indiana Station



East Los Angeles  
Civic Center



Pomona/Atlantic



Metro



Gold  
Line



# Metro Gold Line Eastside Extension At-Grade Station Construction 1<sup>st</sup>/Alameda and 1<sup>st</sup>/Utah



Little Tokyo/Arts District Station -  
Northeast corner of 1st/Alameda.



Pico/Aliso Station – View east near  
1<sup>st</sup>/Utah towards Boyle Heights.

Construction of the At-Grade stations along the west side of the alignment includes concrete sitework, canopy installation and systems installation.

# Metro Gold Line Eastside Extension At-Grade Station Construction



Indiana Station



Maravilla Station



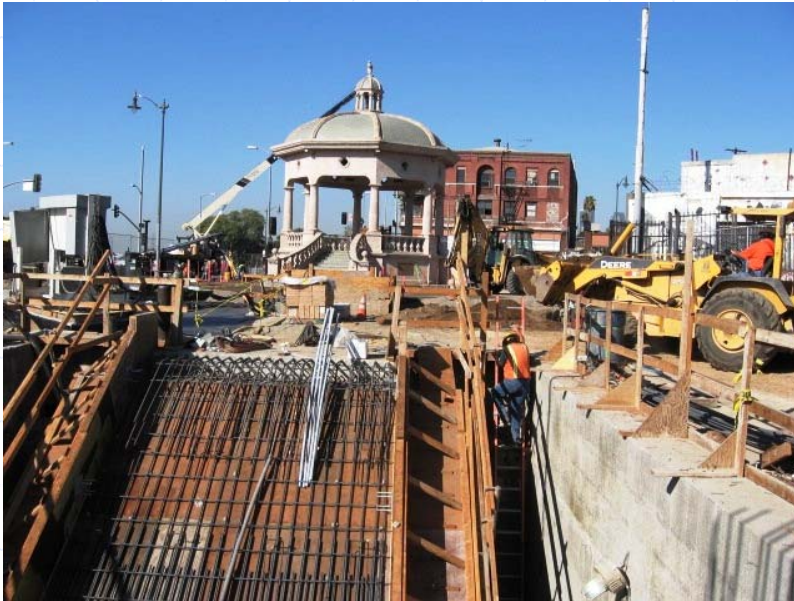
East LA Civic Center Station



Pomona/Atlantic Station

Construction of the stations from 1st/Indiana and along 3rd Street in East Los Angeles is well underway where the erection of canopies and the installation of architectural finishes has begun.

# Metro Gold Line Eastside Extension Underground Station Construction 1<sup>st</sup>/Boyle and 1<sup>st</sup>/Soto

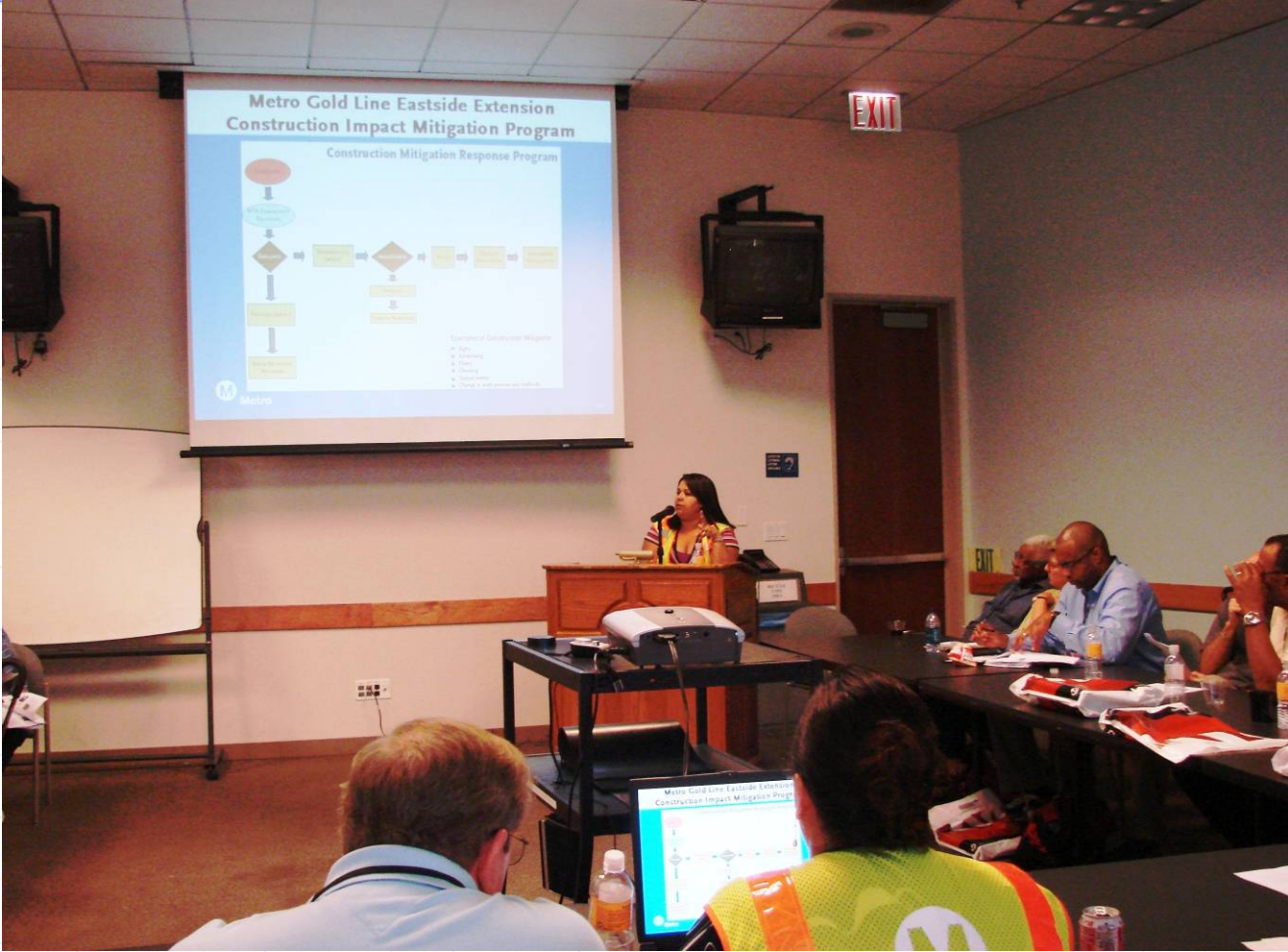


Boyle Heights/Mariachi Plaza - Northeast corner of 1st/Boyle where the station entrance is being constructed adjacent to the Mariachi Plaza Kiosk.



Soto Station - Southwest corner of 1st/Soto where the station entrance is being constructed in the future pedestrian plaza.

# Metro Gold Line Eastside Extension Community Relations



Metro

Gold  
Line

# Metro Gold Line Eastside Extension City of Baltimore Tour with the RAC



Metro hosted a Community Workshop between guests from the City of Baltimore and Eastside community Review Advisory Committee (RAC) members.



City of Baltimore elected officials, community and business leaders join Eastside community Review Advisory Committee members for an underground tour of the Boyle Heights/Mariachi Plaza Station.

# Metro Gold Line Eastside Extension Community Relations Mitigation



**InStyle**  
Hair Salon  
3474 E. First St., Suite #101  
Los Angeles, CA 90063  
Maggie (323) 268-9102

**HOURS:**  
Mon. - Sat.: 9 am - 7 pm  
Sunday: 12 pm - 5 pm

**SERVICES INCLUDE:**  
cuts, perms, color,  
high lights, extensions



Mitigating construction related impacts.

Coordinating construction activities to minimize disruptions.

Notification of traffic detours and related activities through construction notices.

Filing field reports for physical damages to the Contractor.

Working with local businesses to promote them as part of the opening of the Metro Gold Line Eastside Extension.

**Great Job!**  
You deserve a SO-CAL Treat!  
You are entitled to a FREE kid's cone (3 oz.)  
Vanilla Soft Serve  
203 S. Mednik Ave., Los Angeles, CA 90022  
(between 1st/3rd St.) (323) 263-3188

GIVEN BY: \_\_\_\_\_  
SO-CAL BURGERS  
EMAIL: \_\_\_\_\_

One Certificate per child per visit. Must be accompanied by an adult. Offer Expires May 31, 2012.

**Grupo Mission Maravilla**  
*Estamos abiertos durante la construcción!*

**HORARIO:**  
Lunes a Domingo: Día: 2:00 p.m. - 3:30 p.m. Noche: 8:00 p.m. - 9:30 p.m.  
Para más información favor de llamar: (323) 722-4175

1715 Mariachi Plaza  
Los Angeles, CA 90033  
Ubicado en la esquina de la  
Calle Primera y Avenida Boyle

**Community Relations Field Office**

**1505 1st Street**

**Los Angeles, CA 90033**

**MGLEE HOTLINE**

**(213) 922 - 2259**

**[www.metro.net/eastside](http://www.metro.net/eastside)**



**Metro**

**Gold**

**Line 14**

# Metro Gold Line Eastside Extension Community Relations Mitigation

Mariachi Directory Now Available!

- Public Libraries
- Local Chambers of Commerce
- Offices of Elected Officials

For a complete list of locations:

- [www.mothersofeastla.com](http://www.mothersofeastla.com)
- [www.boyleheightschamber.com](http://www.boyleheightschamber.com)
- [www.boyleheightsnc.com](http://www.boyleheightsnc.com)
- [www.elacoc.com](http://www.elacoc.com)



Metro

Gold  
Line

15

# Metro Gold Line Eastside Extension



**End of Presentation**



**Metro**

**Gold  
Line**

**16**

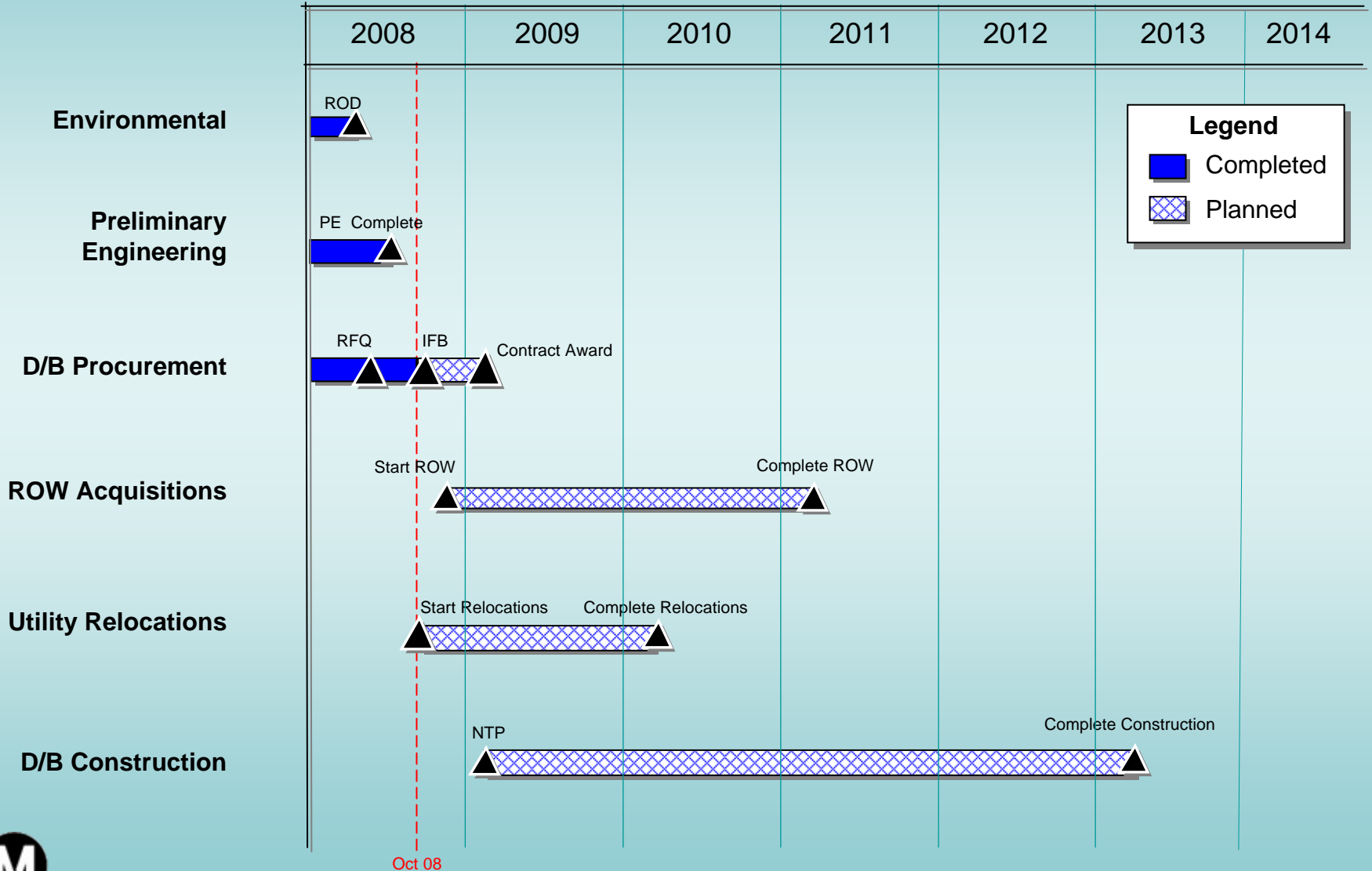


# I-405 Sepulveda Pass Widening Project Project Update October 2008



# I-405 Sepulveda Pass Project Summary Schedule

Calendar Year





## I-405 Sepulveda Pass Project Recent Accomplishments

- Received \$730 million in State CMIA funds from the California Transportation Commission.
- Received authorization from FHWA to expend federal funds for PE, ROW and utility relocation activities.
- Prequalified two consortiums to receive Invitation for Bids (IFB).
- Completed contract documents and anticipate issuing IFB in early October 2008.
- Met with PECG to attempt to resolve their concerns.
- Negotiating with Caltrans to finalize field staffing levels.



## I-405 Sepulveda Pass Project Areas of Concern

- ✓ Estimated Project Budget may exceed funding.
- ✓ Significant utility issues (i.e., MWD water line).
- ✓ FHWA/Caltrans design approval process may cause schedule delays.
- ✓ Contractor's concerns about Caltrans/LACMTA processes could result in more expensive bids.
- ✓ Lawsuits could delay project.

## Exposition Light Rail Transit Project



**Expo Board Presentation  
Monthly Project Status Update  
October 16, 2008**

# PHASE 1



## Design

- Baseline Design is approximately 92% complete
- Venice/Robertson design is approximately 36% complete

## Construction

- Construction is approximately 19% complete

## Construction Packages

- Negotiated 12 of the 19 construction packages

## Third Party Agreements

- Executed 5 of the 8 third party agreements

## CPUC Grade Crossing Applications

- September 15<sup>th</sup>: Evidentiary Hearings concluded
- September 30<sup>th</sup>: Opening Briefs filed
- October 8<sup>th</sup>: Reply Briefs due
- October 22<sup>nd</sup>: ALJ Proposed Decision
- November 21<sup>st</sup>: Possible CPUC Commission Decision





Began Excavation of Trench Structure



Began Receiving Running Rail



**6-Way Ductbank in Segment B**



Abutment at National Blvd Bridge





**Abutment Wing Wall at National Blvd Bridge**

## Project Budget Summary

### ■ Construction Budget

- 12 of 19 construction packages have been negotiated in an amount totaling \$285 million
- Currently within the revised construction budget

### ■ Project Budget

- All tasks are within the overall project budget
- Remaining significant risks to the budget include:
  - Contracts yet to be negotiated (including Storage and Inspection Facility)
  - Any significant contractor claims
  - Any significant owner related project delays
  - Changes to Farmdale crossing and Harvard Pedestrian Tunnel

# PHASE 2



Phase 2 Milestones				
Activity	Scheduled Completion Date	Forecast Completion Date	Status	Comments
Scoping Meetings & Report	Mar-07	May-07	Complete	
Screening of Alternatives	May-07	Oct-07	Complete	Delay in receiving ridership model from Metro
Administrative Draft to FTA	Oct-07	Oct-08		Delay due to need to recalibrate model received from Metro and delays in grade crossing analysis
Start Public Hearings on Draft DEIS/DEIR	Feb-08	Fall-08		FTA must sign off on Draft DEIS before document can be circulated
Board Adoption of LPA	May-08	Winter-09		
Request to enter Preliminary Engineering (PE)	May-08	Winter-09		