



# Measure R Implementation Plan

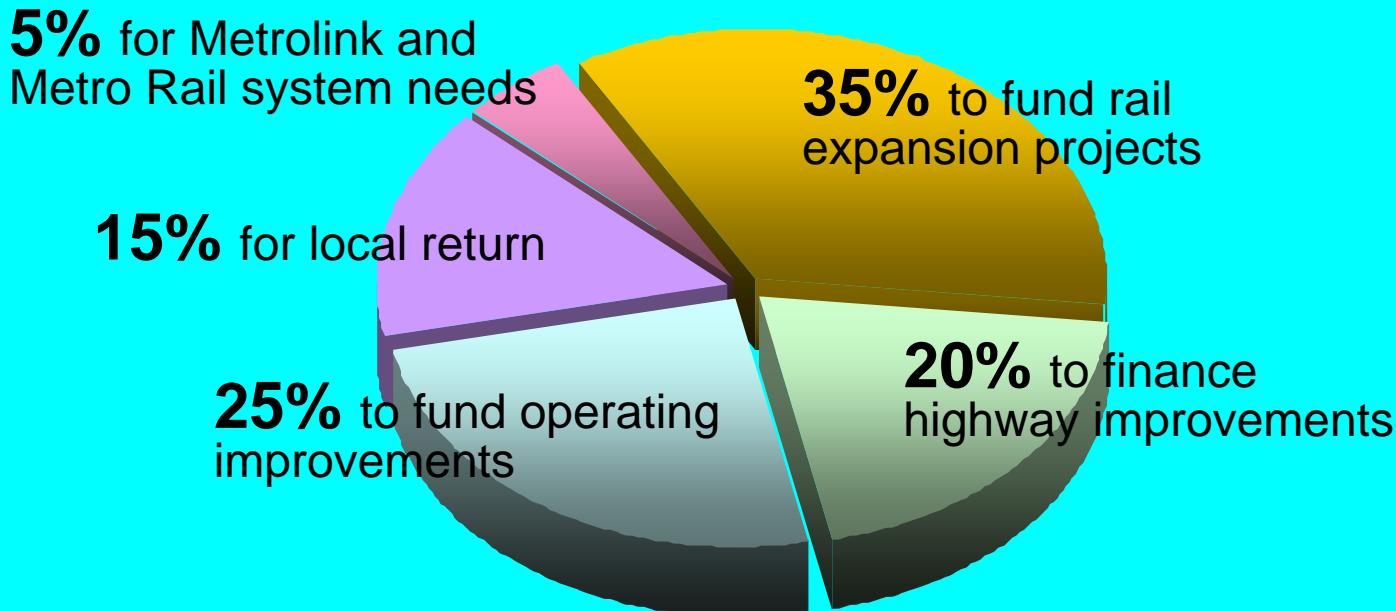


February 11, 2009

# Measure R Will Improve Mobility

Through:

- Expansion of the rail system
- Highway improvements
- Improved local streets and intersections
- Better and safer Metrolink & rail capital
- Improved public transportation



## Messages

- The public has spoken
- Promises were made - they will be kept
- *It's not business as usual at Metro*
- 'R' implementation will be expedited
- Additional funds will be sought to augment 'R'
- 'R' will reduce traffic congestion
- 'R' will aid in restoring the county's economy
- Metro will partner with cities to maximize 'R' progress

# Strategies

- Form strategic partnerships
- Leverage self-help position
- Implement integrated project delivery process
- Stress “Green Benefits”
- Explore fast tracking procurement process
- Showcase benefits of Measure R
- Develop “jump start” plan for each construction project
- Continue to implement strong budget and schedule controls
- Review project escalation assumptions
- Develop working partnership with cities, communities and local businesses
- Develop working partnership “public/private partnership approach”

# Create Framework and Oversight

- Board Project Delivery Committee & Internal Management Project Delivery Task Force already established
- Establish Advisory Panel
- Create optimal staffing model for each project
- Establish delivery schedules by project
- Build external partnership and coalitions (city/business/environmental/labor)
- Adopt governing policies
  - Guidelines for local return, bus operations, clean fuel bus and Metrolink funds
  - Bonding/financing applications
  - Service investment strategies
  - External investment/management

# Board Project Delivery Committee

Director  
**Richard Katz**  
*Chair*

Director  
**Zev Yaroslavksy**  
*Vice Chair*

Director  
**Don Knabe**

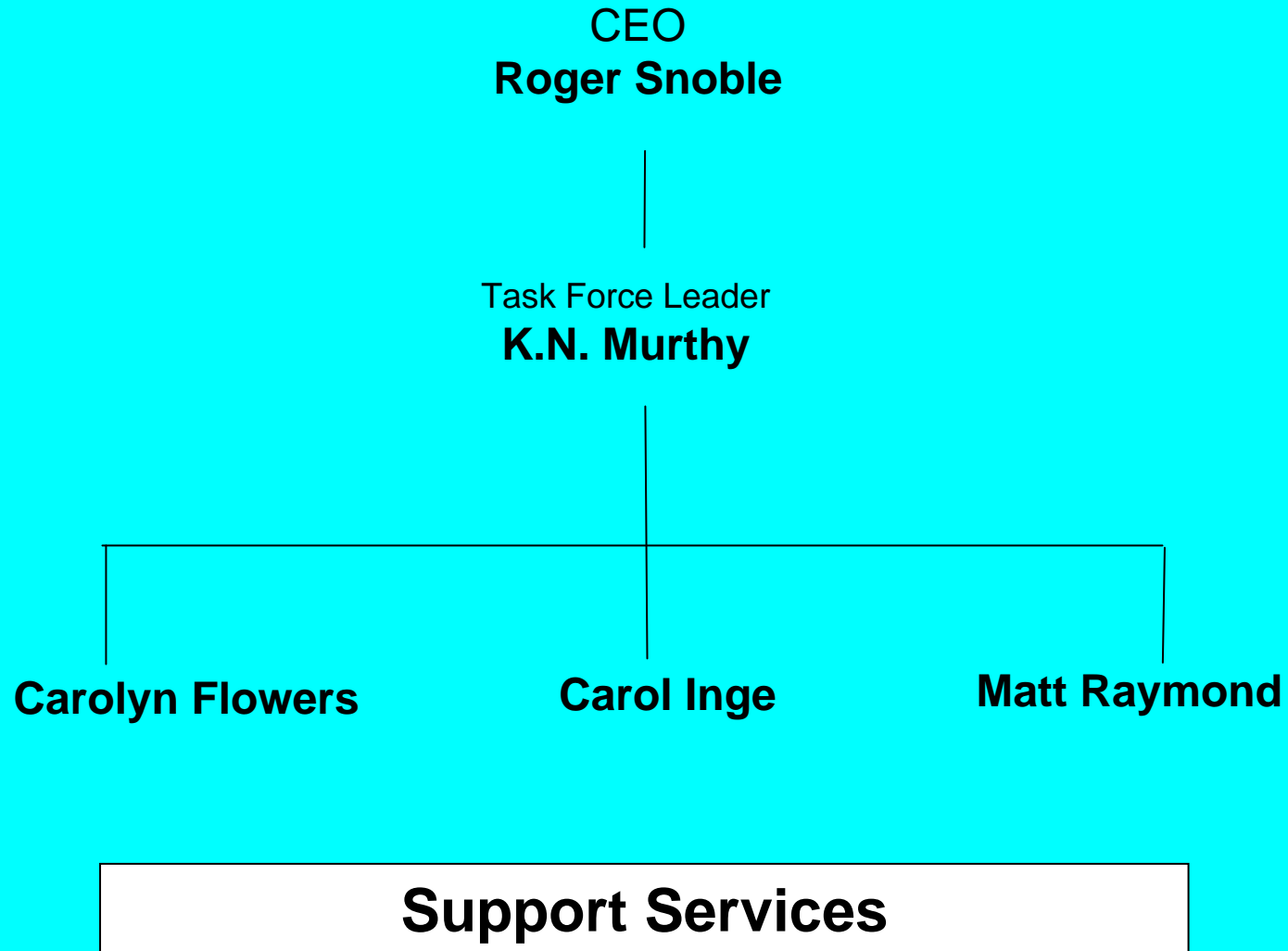
Director  
**Ara Najarian**

Director  
**Pam O'Connor**

## **Advisory Panel**

- Construction trade labor union representative
- Environmental engineer or environmental scientist
- Road or rail construction firm project manager
- Public and private finance expert
- Regional association of businesses representative
- Transit system user

# Project Delivery Task Force





## Develop Implementation Plans

- Adopt the Long Range Transportation Plan
- Finalize “Rail Expansion Program” – schedules and budgets
- Work with cities/county to encourage coordinated local return projects
- Seed “Highway Improvement Program” for additional Funding
- Establish “Bus Service Improvement Program”

## Address Threats and Opportunities

- Mitigate state funding gaps
- Resolve structural deficit
- Pursue federal stimulus package
- Form public/private partnerships
- Identify innovative ways for project acceleration and cost savings
- Aggressively seek additional federal funding (leveraging self-help status)

## Create Governing Policies

- Adopt guidelines for local return, bus operations, clean fuel bus and Metrolink funds
- Evaluate possible and creative bonding/financing applications
- Determine service investment strategies
- Explore external investment/management (Public Private Partnership/Public Private Financing)

## The Next 90 days

- Establish Advisory Panel
- Work with external supporters to build coalitions
- Conduct baseline study to gauge public opinion/expectations
- Conduct enhanced outreach to cities/COGS
- Engage funding partners to advance project delivery and funding
- Form General Manager taskforce to coordinate joint service efforts
- Create Progress Report website & publication

## First Six Months

- Prepare policy guidelines for implementation
- Establish staff implementation teams
- Establish legal parameters
- Establish Public Private Partnership & Public Private Financing models

## Rail Expansion the First Five Years

- Open Exposition LRT Phase I
- Begin Exposition LRT Phase 2 Construction
- Complete Orange Line Canoga Extension
- Begin Wilshire BRT Construction
- Begin Crenshaw Corridor Construction
- Begin Green Line to LAX Construction
- Begin San Fernando Valley East North/South Arterials Construction
- Begin Gold Line Foothill Extension Construction
- Begin Regional Connector Construction
- Begin Wilshire Subway Extension Construction

## Anticipated Local Return Improvements - First Five Years

- Signal synchronization
- Pothole and street repair
- Intersection improvements
- Bicycle lane improvements
- Arterial improvements
- Pedestrian improvements
- Improved transit stops and centers
- Increased local shuttle service

## Highway Improvements - First Five Years

- Complete four miles of soundwall program
- Complete major portions of I-5 Capacity Enhancement from the I-605 to the Orange County Line
- Complete Carmenita Road Interchange (I-5)
- Complete SR-134 to SR-170/I-5 Capacity Enhancement



## Transit Operational Improvements - First Five Years

- Maintain low Metro fares for seniors/students/disabled
- Resolve operating deficit
- Establish reserve fund for operating future projects
- Open Canoga Orange Line extension
- Expand Express & Rapid Bus Network
- Achieve operation of 100% clean-air fleet
- Fund improvements to Municipal Operators
- Improve dial-a-ride and paratransit services (cities/county)

## Projects Implementation – Bus Operations

- Bus Rapid Improvements
- Express Line Improvements
- Local bus Improvements
- Improve service for seniors
- Improve services for the disabled
- Increase bus service to rail station

## Implementation: First Five Years

### Rail Expansion

- Open Expo LRT Phase I
- Begin Expo Phase II construction
- Complete Orange Line Canoga Extension
- Begin Wilshire BRT construction
- Begin Crenshaw Corridor construction
- Begin Green Line to LAX construction
- Begin San Fernando Valley East N/S Arterials construction
- Begin Gold Line Foothill Extension
- Begin Wilshire Subway Extension
- Begin Regional Connector construction

### Street Improvements

- Signal synchronization
- Pothole and street repair
- Intersection improvements
- Bicycle lane improvements
- Arterial improvements
- Pedestrian improvements
- Improved transit stops and centers
- Increased local shuttle service

### Highway Improvements

- Complete four miles of soundwall program
- Complete I-5 Capacity Enhancement from the I-605 to the Orange County Line
- Complete Carmenita Interchange
- Complete R-134/I-70/I-5 enhancement

### Operational Improvements

- Maintain low fares
- Begin SFV N/S Rapidways
- Open Orange Line Extension
- Expand Bus Network
- Improve Dial-a-Ride/ Paratransit Services (cities/county)

## Quality of Life in the First Five Years

- Return \$3 billion into the local economy
- Create over 50,000 new jobs in Los Angeles County
- Move 40,000 more people per day onto public transportation
- Convert 30,000 more people per day into shared-rides (carpool/vanpool)
- Eliminate 500,000 metric tons of carbon-dioxide equivalents from our air
- Expand transit-oriented development along new rail lines