

# Planning and Programming Committee

## May 20, 2009

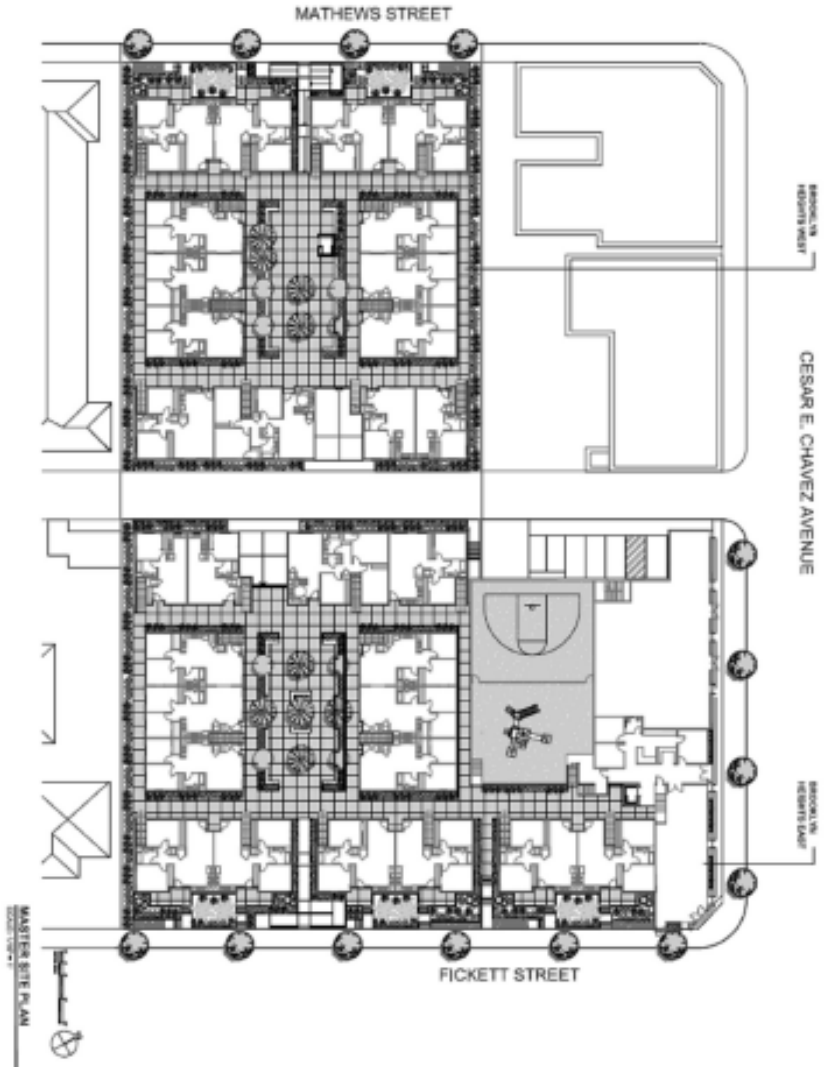
- ★ Chavez & Fickett Joint Development (Item 29)
- ★ 1<sup>st</sup> & Boyle Joint Development (Item 30)

Greg S. Angelo  
Director of Real Property Management & Development

# The Chavez & Fickett/Chavez & Soto Development Sites



# Conceptual Plan – Chavez & Fickett



# Conceptual Plan – Chavez & Fickett



*CORNER OF CESAR E. CHAVEZ AVE & FICKETT STREET*



*FICKETT STREET LOOKING NORTH TOWARDS CESAR E. CHAVEZ AVE*



*DETAIL OF RESIDENTIAL UNITS ALONG FICKETT STREET*



*CESAR E. CHAVEZ AVENUE ELEVATION*



*FICKETT STREET ELEVATION*

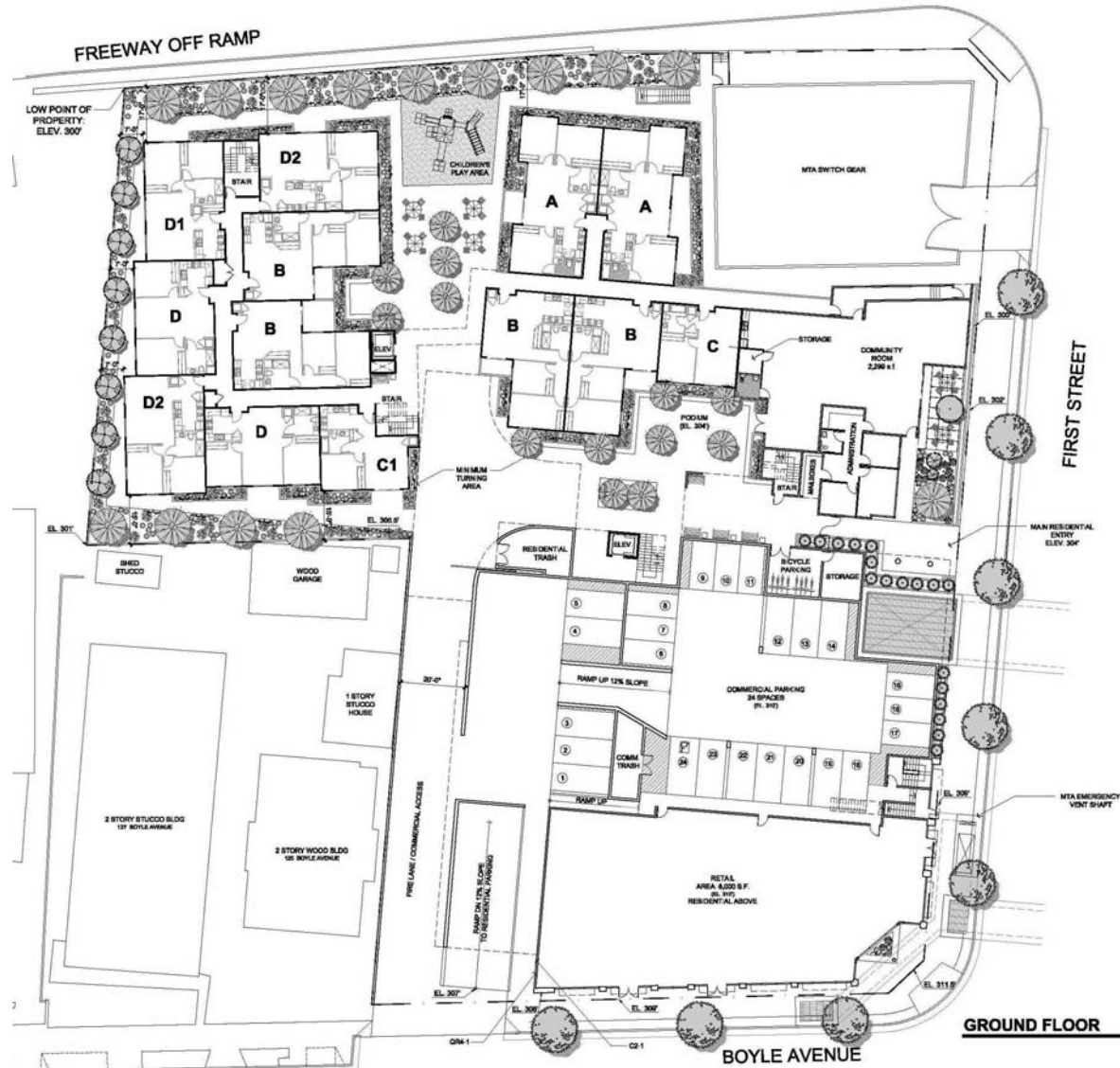


**Metro**

# The 1<sup>st</sup> & Boyle Development Sites



# Conceptual Plan – SWC of 1<sup>st</sup> & Boyle



# Conceptual Plan – SWC of 1<sup>st</sup> & Boyle



*CORNER OF BOYLE AVENUE AND FIRST STREET*

# Conceptual Plan – SWC of 1<sup>st</sup> & Boyle



*FIRST STREET LOOKING SOUTH TOWARDS BOYLE AVENUE*