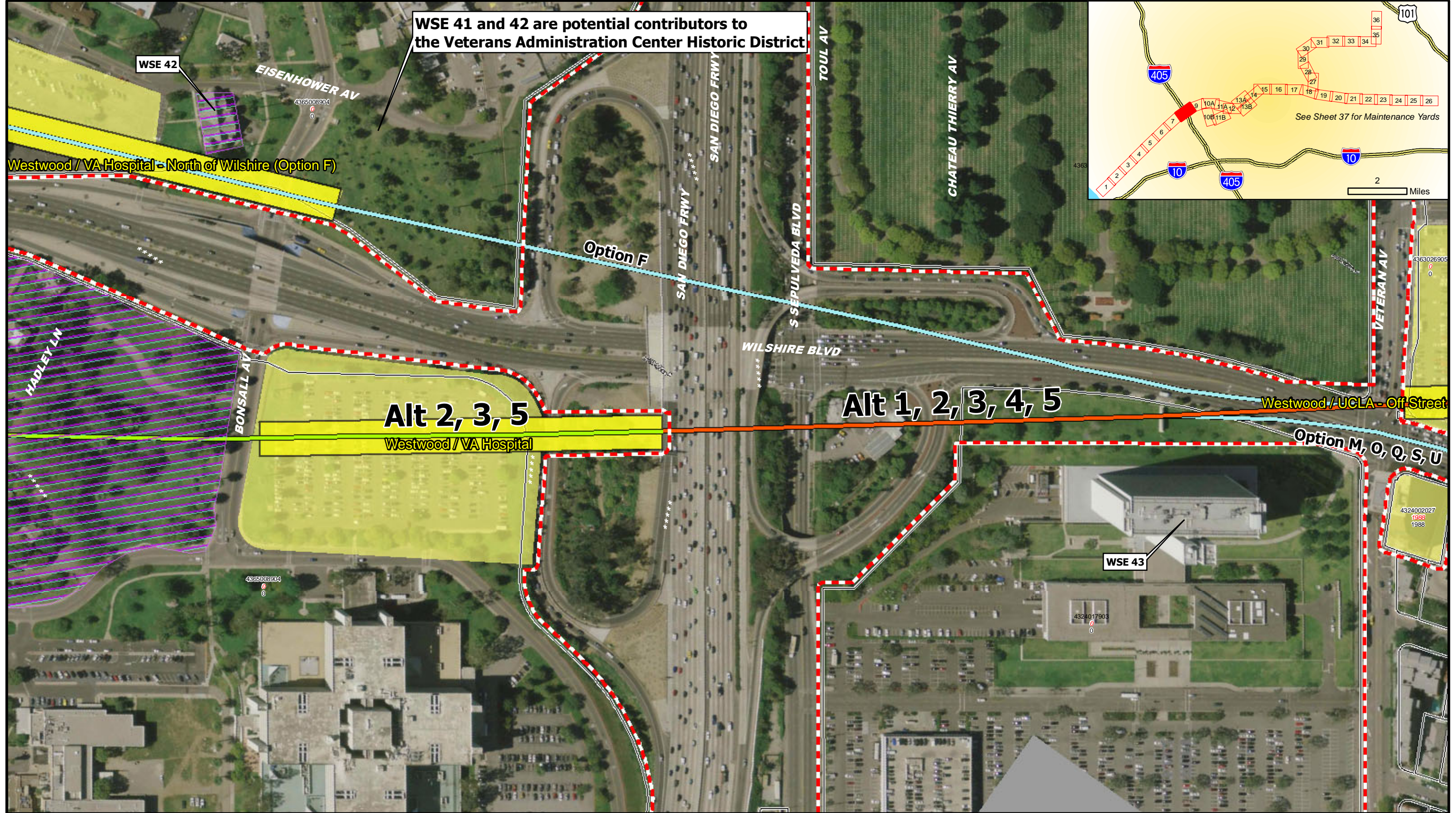
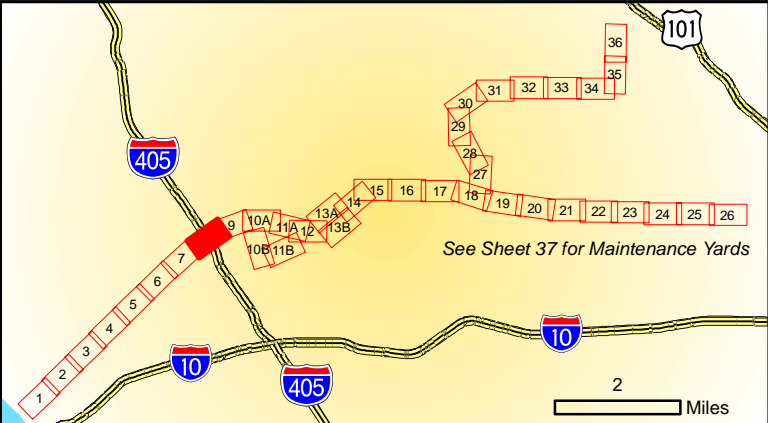
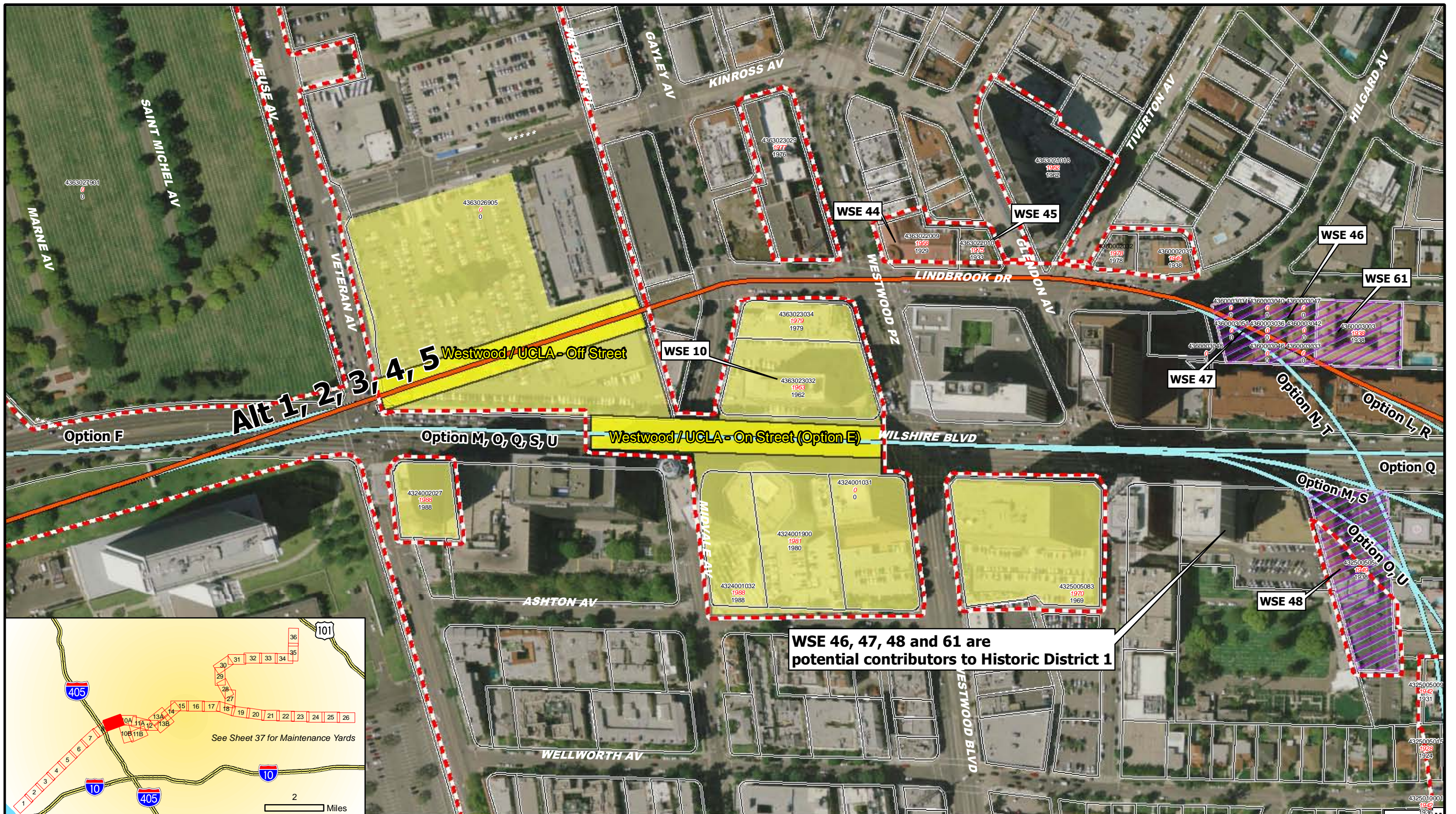


WSE 41 and 42 are potential contributors to the Veterans Administration Center Historic District



Legend Built Environment APE Properties Subject to Reconnaissance Survey Activities Contributors to Historic District	Alignment Alternatives and Options Alternative 1, 2, 3, 4, 5 Alternative 2, 3, 5 Alternative 3, 5 Alternative 4, 5 Options	WSE ID NRHP-, CRHR-, and/or locally eligible or listed properties; and/or Contributors to a Historic District AIN Parcels within APE Effective Year Built Year Project Improvements	0 100 200 400 Feet	WESTSIDE SUBWAY EXTENSION ARCHITECTURAL AND HISTORIC RESOURCES		
				March 2010	Sheet 8 of 39	

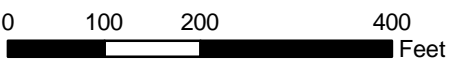


WSE 46, 47, 48 and 61 are potential contributors to Historic District 1

- Legend**
- Built Environment APE
 - Properties Subject to Reconnaissance Survey Activities
 - Contributors to Historic District

- Alignment Alternatives and Options**
- Stations
 - Alternative 1, 2, 3, 4, 5
 - Alternative 2, 3, 5
 - Alternative 3, 5
 - Alternative 4, 5
 - Options

- WSE ID** NRHP-, CRHR-, and/or locally eligible or listed properties; and/or Contributors to a Historic District
- AIN** Effective Year Built Year
- Parcels within APE
 - Project Improvements

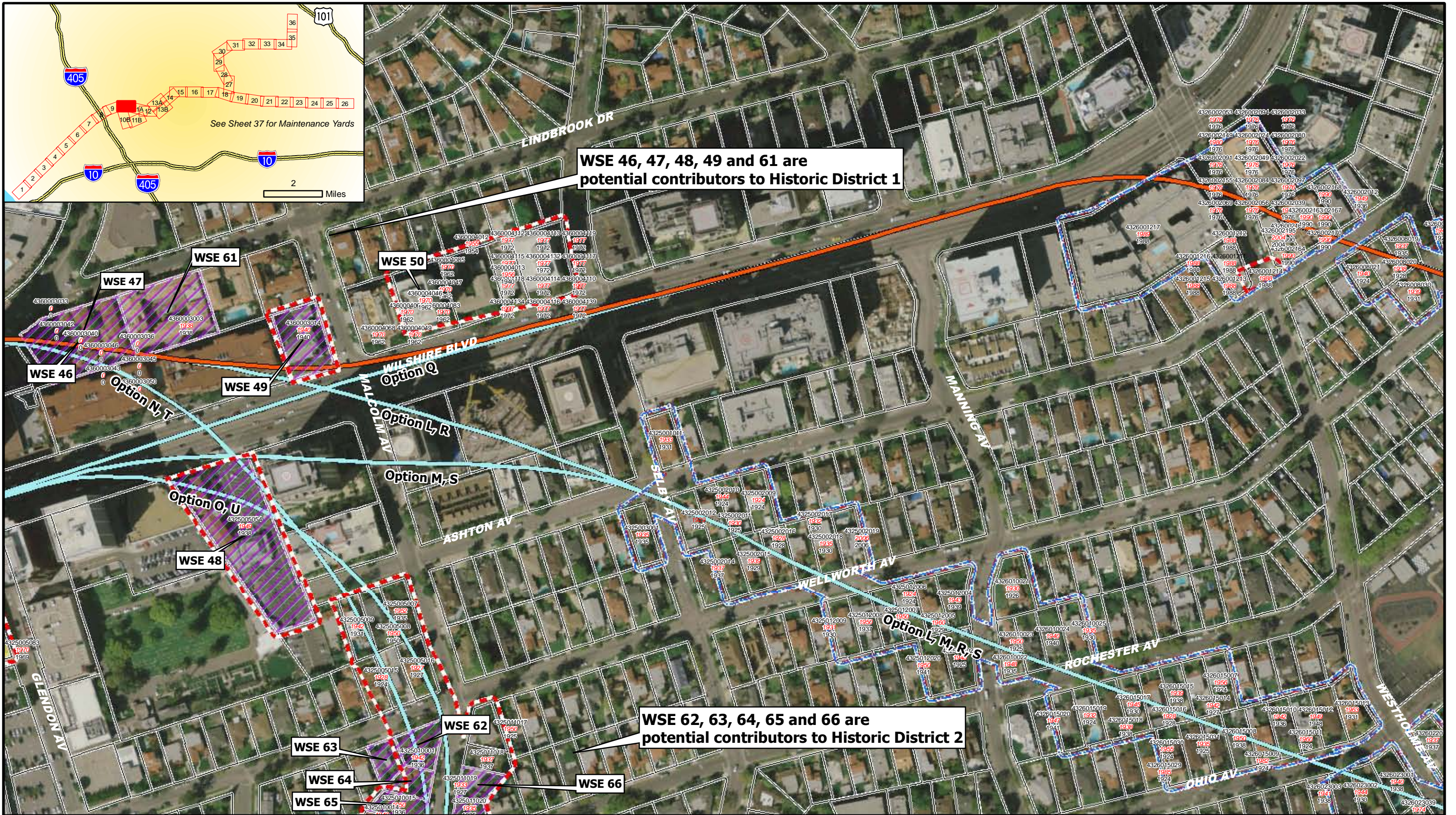
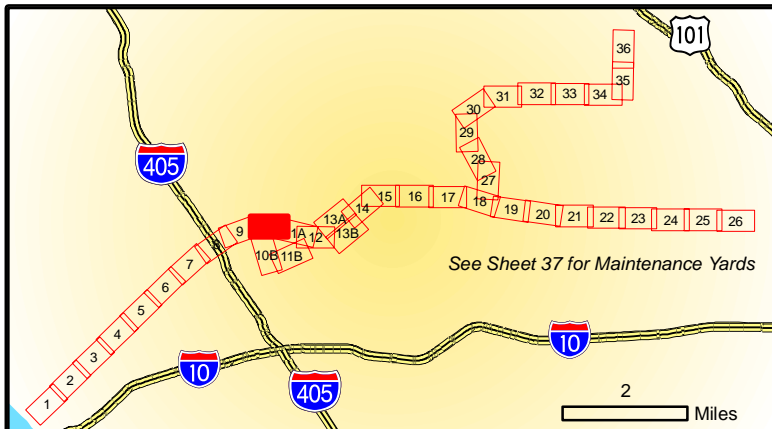


**WESTSIDE SUBWAY EXTENSION
ARCHITECTURAL AND HISTORIC RESOURCES**

March 2010

Sheet 9 of 39





- Legend**
- Built Environment APE
 - Properties Subject to Reconnaissance Survey Activities
 - Contributors to Historic District

- Alignment Alternatives and Options**
- Alternative 1, 2, 3, 4, 5
 - Alternative 2, 3, 5
 - Alternative 3, 5
 - Alternative 4, 5
 - Options

- WSE ID** NRHP-, CRHR-, and/or locally eligible or listed properties; and/or Contributors to a Historic District
- AIN** Effective Year
- Built Year**
- Parcels within APE
 - Project Improvements



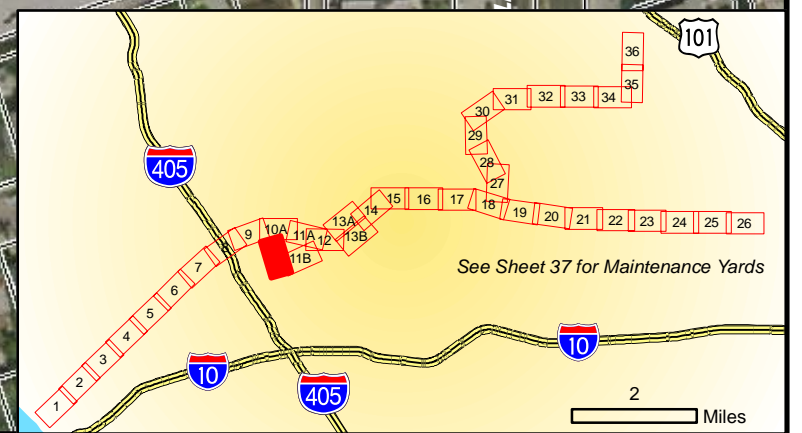
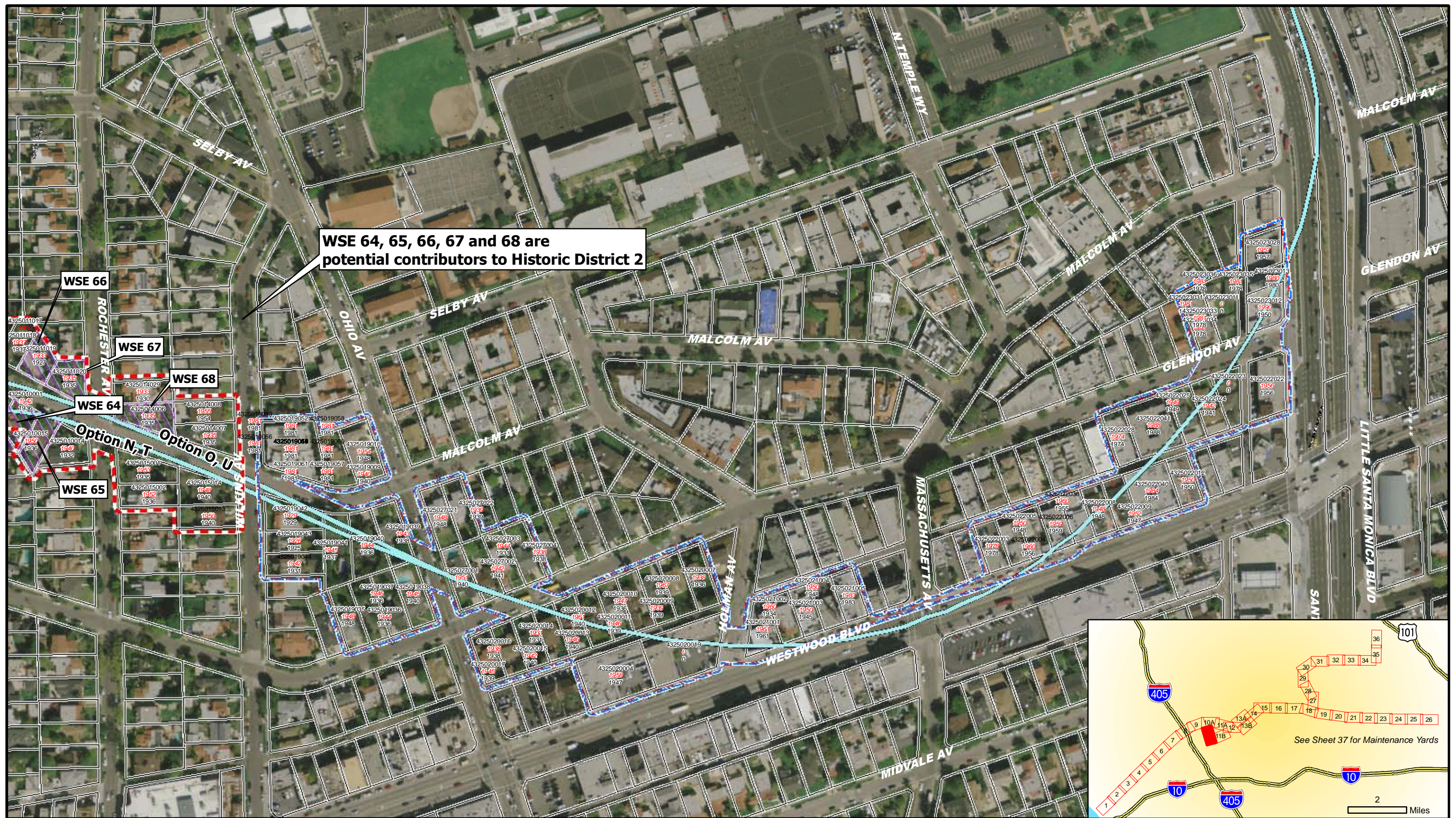
**WESTSIDE SUBWAY EXTENSION
ARCHITECTURAL AND HISTORIC RESOURCES**

March 2010

Sheet 10A of 39



WSE 64, 65, 66, 67 and 68 are potential contributors to Historic District 2



Legend

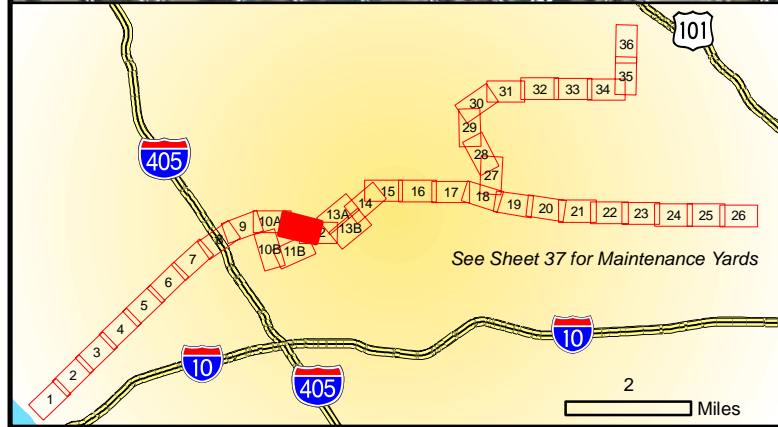
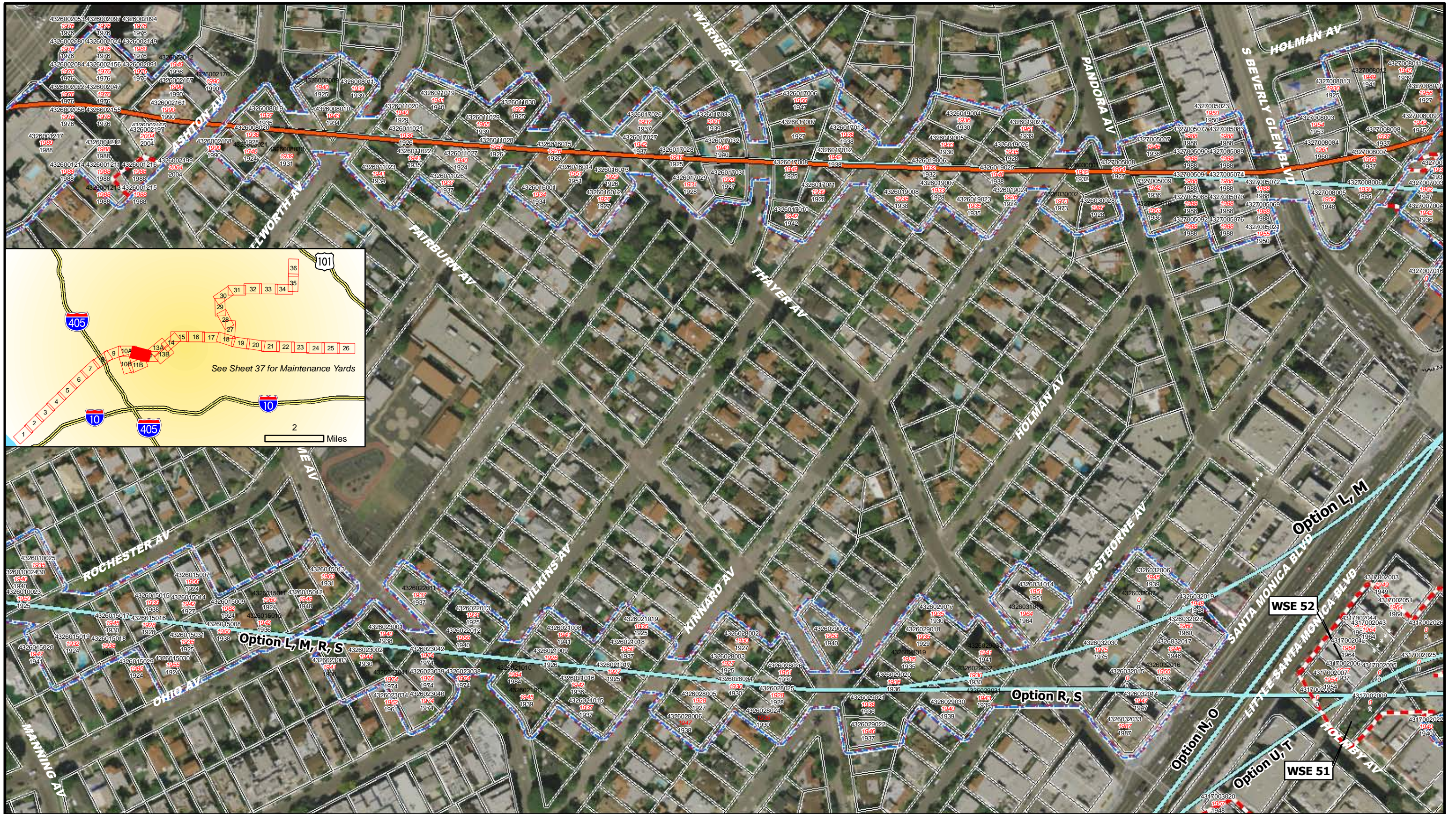
- Built Environment APE
- Properties Subject to Reconnaissance Survey Activities
- Contributors to Historic District
- Stations
- Alignment Alternatives and Options**
 - Alternative 1, 2, 3, 4, 5
 - Alternative 2, 3, 5
 - Alternative 3, 5
 - Alternative 4, 5
 - Options
- WSE ID
- AIN Effective Year Build Year
- Parcels within APE
- Project Improvements

0 100 200 400 Feet

**WESTSIDE SUBWAY EXTENSION
ARCHITECTURAL AND HISTORIC RESOURCES**

March 2010

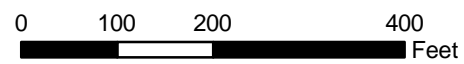
Sheet 10B of 39



- Legend**
- Built Environment APE
 - Properties Subject to Reconnaissance Survey Activities
 - Contributors to Historic District

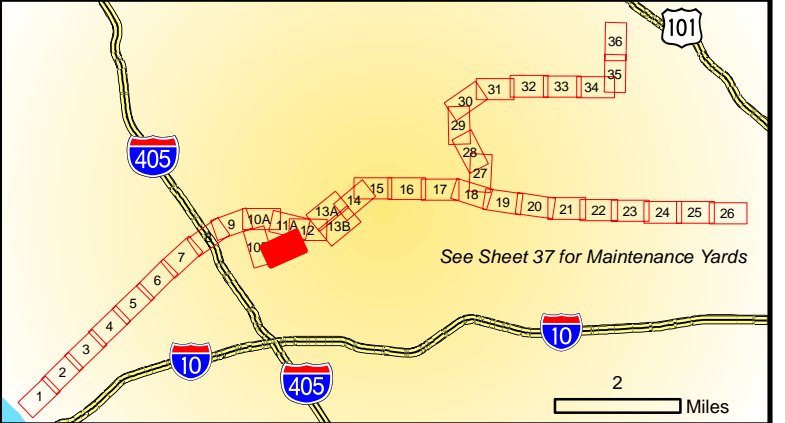
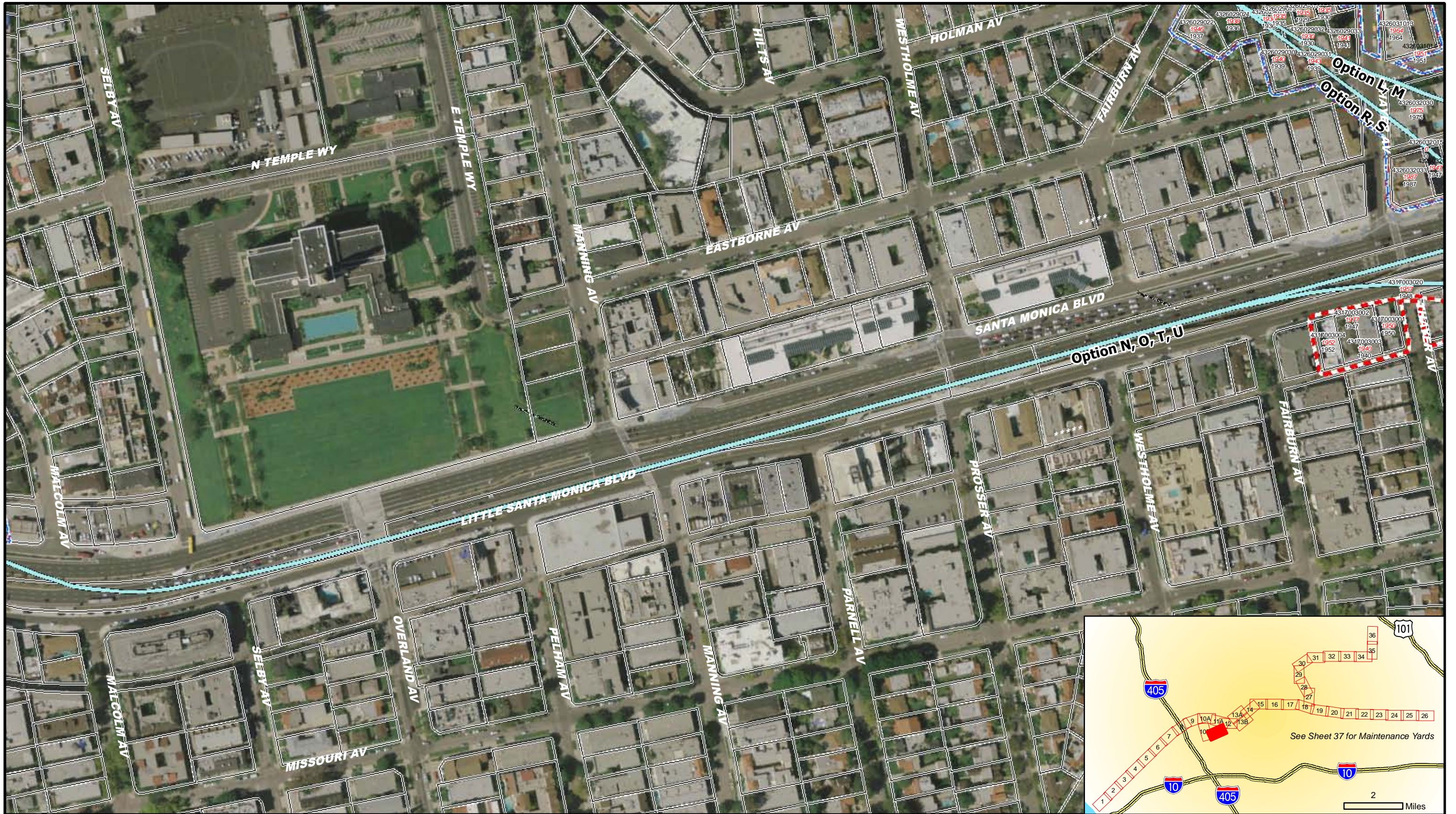
- Stations**
- Stations
- Alignment Alternatives and Options**
- Alternative 1, 2, 3, 4, 5
 - Alternative 2, 3, 5
 - Alternative 3, 5
 - Alternative 4, 5
 - Options

- WSE ID**
- NRHP-, CRHR-, and/or locally eligible or listed properties; and/or Contributors to a Historic District
- AIN**
- Effective Year
 - Built Year
- Parcels within APE**
- Project Improvements



**WESTSIDE SUBWAY EXTENSION
ARCHITECTURAL AND HISTORIC RESOURCES**

March 2010	Sheet 11A of 39	
------------	-----------------	--

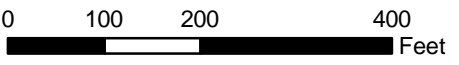


Legend

- Built Environment APE
- Properties Subject to Reconnaissance Survey Activities
- Contributors to Historic District

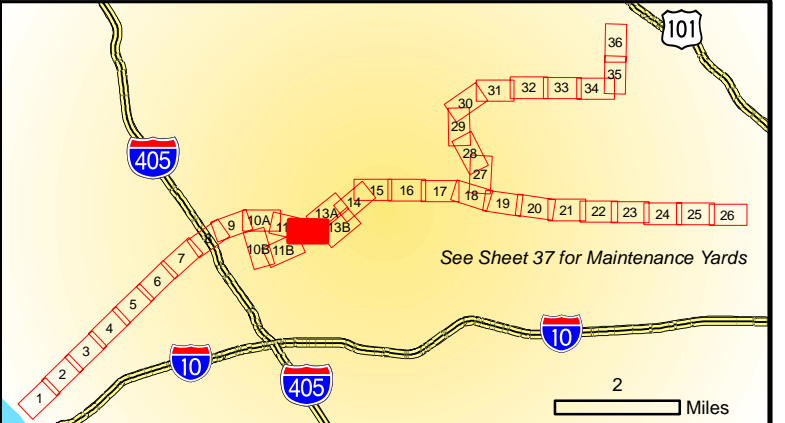
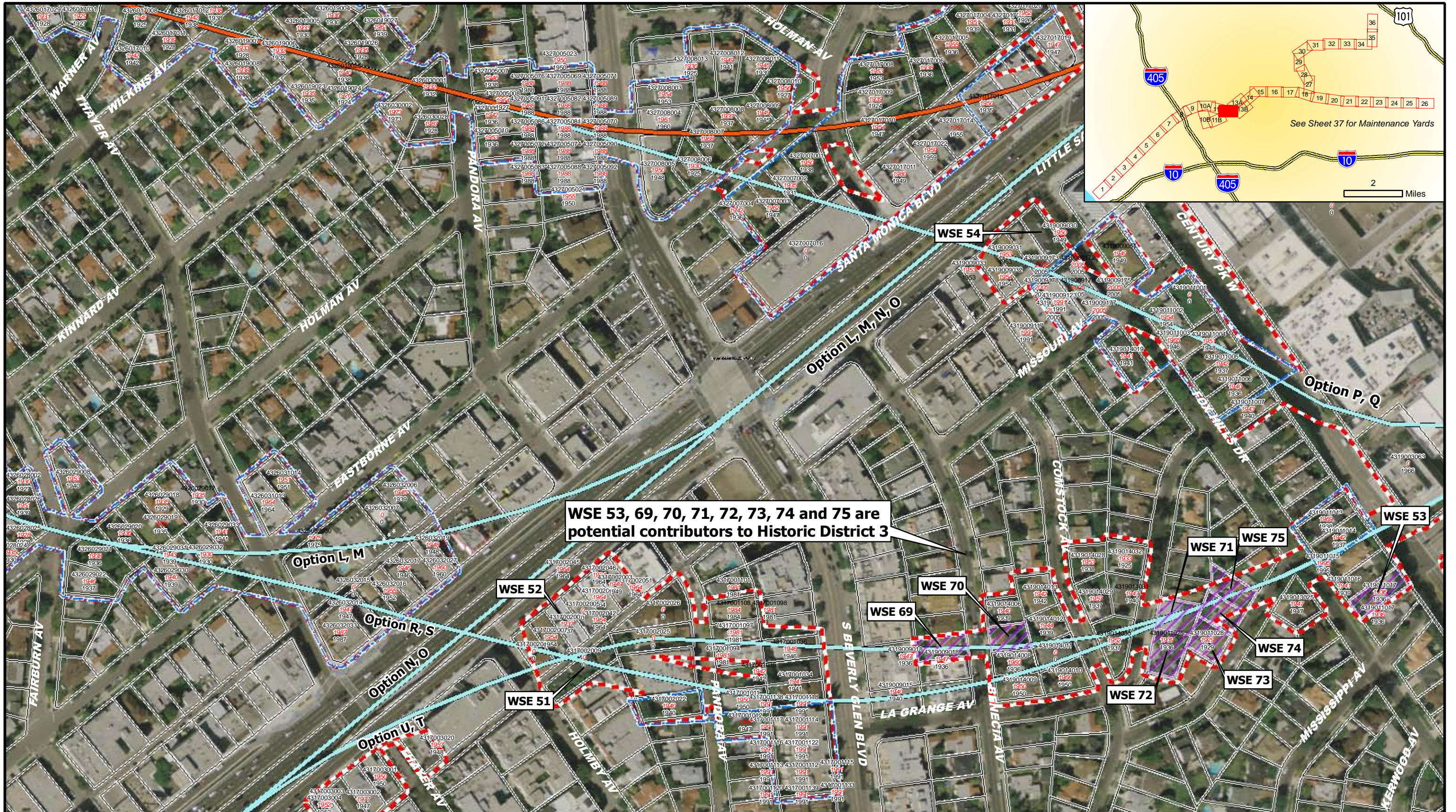
- Stations**
- Stations
- Alignment Alternatives and Options**
- Alternative 1, 2, 3, 4, 5
 - Alternative 2, 3, 5
 - Alternative 3, 5
 - Alternative 4, 5
 - Options

- WSE ID** NRHP-, CRHR-, and/or locally eligible or listed properties; and/or Contributors to a Historic District
- AIN** Effective Year
- Built Year**
- Parcels within APE
 - Project Improvements



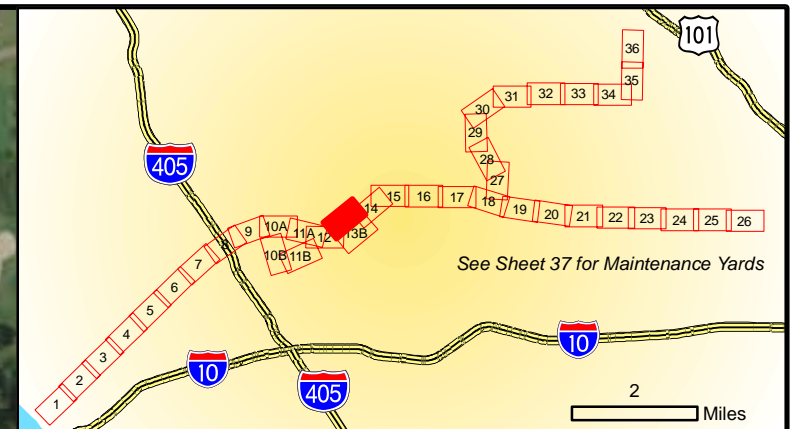
**WESTSIDE SUBWAY EXTENSION
ARCHITECTURAL AND HISTORIC RESOURCES**

March 2010	Sheet 11B of 39	
------------	-----------------	--



WSE 53, 69, 70, 71, 72, 73, 74 and 75 are potential contributors to Historic District 3

Legend Built Environment APE Properties Subject to Reconnaissance Survey Activities Contributors to Historic District		Stations Alignment Alternatives and Options Alternative 1, 2, 3, 4, 5 Alternative 2, 3, 5 Alternative 3, 5 Alternative 4, 5 Options		WSE ID NRHP-, CRHR-, and/or locally eligible or listed properties; and/or Contributors to a Historic District Parcels within APE Project Improvements		WESTSIDE SUBWAY EXTENSION March 2010 Sheet 12 of 39 	



Legend Built Environment APE Properties Subject to Reconnaissance Survey Activities Contributors to Historic District		Alignment Alternatives and Options Alternative 1, 2, 3, 4, 5 Alternative 2, 3, 5 Alternative 3, 5 Alternative 4, 5 Options		WSE ID NRHP-, CRHR-, and/or locally eligible or listed properties; and/or Contributors to a Historic District Parcels within APE Project Improvements		 		WESTSIDE SUBWAY EXTENSION ARCHITECTURAL AND HISTORIC RESOURCES		
						March 2010		Sheet 13A of 39		