

APPENDIX B—PLATES

Contents

- Plate 1—Historic Topography
- Plate 2—Prior Explorations
- Plate 3—Fault Exploration Plan [Rev 1](#)
- Plate 4—Transects 1 & 8
- Plate 5—Transect 2 & 2 East
- Plate 6—Transect 3
- Plate 7—Transect 4
- Plate 8—Transect 7
- Plate 9—Constellation Profile
- Plate 10—Transect 1—P-Wave Seismic Section Without Interpretation
- Plate 11—Transect 1—P-Wave Seismic Section With Interpretation
- Plate 12—Transect 2—P-Wave Seismic Section Without Interpretation
- Plate 13—Transect 2—P-Wave Seismic Section With Interpretation
- Plate 14—Transect 3—P-Wave Seismic Section Without Interpretation
- Plate 15—Transect 3—P-Wave Seismic Section With Interpretation
- Plate 16—9464 Line 1—P-Wave Seismic Section Without Interpretation
- Plate 17—9464 Line 1—P-Wave Seismic Section With Interpretation
- Plate 18—Transect 4—P-Wave Seismic Section Without Interpretation
- Plate 19—Transect 4—P-Wave Seismic Section With Interpretation
- Plate 20—Transect 7—P-Wave Seismic Section Without Interpretation
- Plate 21—Transect 7—P-Wave Seismic Section With Interpretation

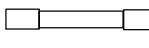




6430000

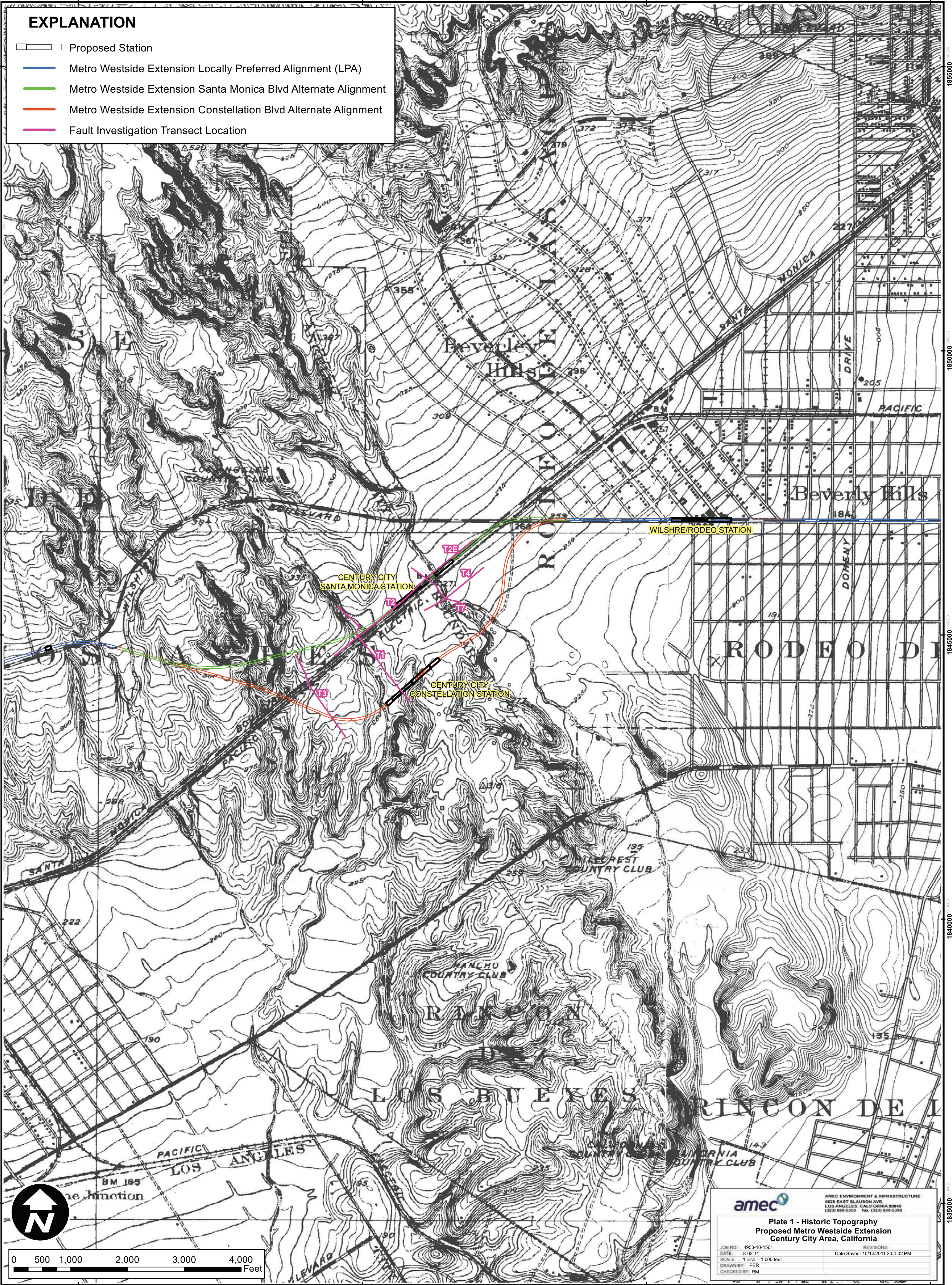
6435000

6440000

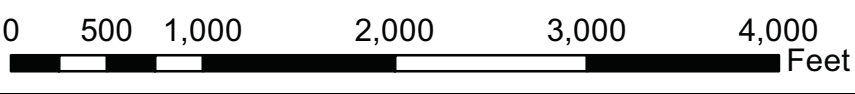
6445000

EXPLANATION

-  Proposed Station
-  Metro Westside Extension Locally Preferred Alignment (LPA)
-  Metro Westside Extension Santa Monica Blvd Alternate Alignment
-  Metro Westside Extension Constellation Blvd Alternate Alignment
-  Fault Investigation Transect Location



Path: G:\4953_Geotech\2010\101561_Metro_Westside_Extension\GIS\Figures\Fault_inv_deliverable\Final\101561_SMF_Plate_1_Hist_topo.mxd Author: P. Romo
 1835000
 1840000
 1845000
 1850000

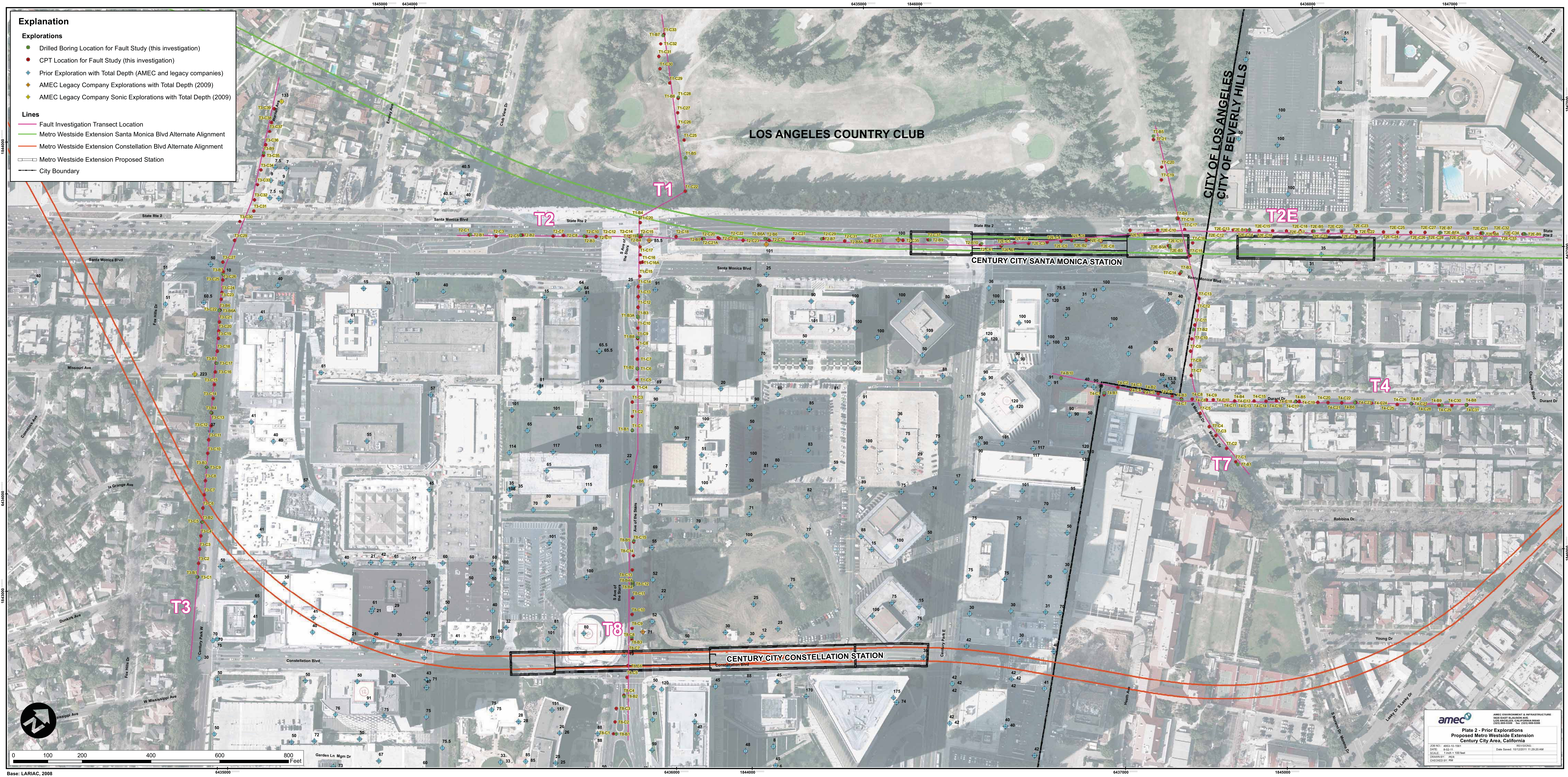


amec AMEC ENVIRONMENT & INFRASTRUCTURE
 5628 EAST Slauson Ave.
 LOS ANGELES, CALIFORNIA 90040
 (323) 889-9399 Fax (323) 889-9398

Plate 1 - Historic Topography
Proposed Metro Westside Extension
Century City Area, California

JOB NO: 4953-10-1561
 DATE: 8-02-11
 SCALE: 1 inch = 1,000 feet
 DRAWN BY: PER
 CHECKED BY: RM

REVISIONS:
 Date Saved: 10/12/2011 3:04:02 PM



Explanation

Explorations

- Drilled Boring Location for Fault Study (this investigation)
- CPT Location for Fault Study (this investigation)
- ◆ Prior Exploration with Total Depth (AMEC and legacy companies)
- ◆ AMEC Legacy Company Explorations with Total Depth (2009)
- ◆ AMEC Legacy Company Sonic Explorations with Total Depth (2009)

Lines

- Fault Investigation Transect Location
- Metro Westside Extension Santa Monica Blvd Alternate Alignment
- Metro Westside Extension Constellation Blvd Alternate Alignment
- Metro Westside Extension Proposed Station
- City Boundary

amec

AMEC ENVIRONMENT & INFRASTRUCTURE
 100 EAST BAYVIEW AVENUE
 SUITE 1000
 LOS ANGELES, CA 90012-1000
 TEL: 213.745.1000
 WWW.AMEC.COM

**Plate 2 - Prior Explorations
 Proposed Metro Westside Extension
 Century City Area, California**

DATE: 10/20/2011 11:29:31 AM
 DRAWN BY: [Name]
 CHECKED BY: [Name]

Path: M:\Projects\GIS\0805_Geotech\2011\01\1561_Metro_Westside_Extension\GIS\Figure\Fault_Inv_delineated\Fault1011561_SME_Phase_2_Prior_Explorations_Plate_2.mxd
 10/20/2011 11:29:31 AM

Base: LARIAC, 2008