



Exposition Construction Authority

707 Wilshire Boulevard, 34th Floor
Los Angeles, CA 90017
213.243.5500
BuildExpo.org

FOR IMMEDIATE RELEASE
November 10, 2014

CONTACT: Samantha Bricker
Exposition Construction Authority
213-243-5502
sbricker@exporail.net

EXPO PHASE 2 REACHES MAJOR MILESTONE WITH ELECTRICAL CONNECTION TO PHASE 1

This weekend, after more than two years of construction, Expo Phase 2 reached a significant milestone as crews began tying together the electrical components of Phase 2 of the Expo Line with Phase 1 at the Culver City station. Work started early Saturday morning after service on Phase 1 ended for the evening.

Crews worked throughout the weekend to pull the wire and fiber optic cable from Phase 2 into Phase 1 and route it into the Communications and Systems building at Culver City Station. The existing dead-end Overhead Catenary System poles and bumper posts were removed so that rail equipment can travel onto the Venice Boulevard Bridge and along the rest of the Phase 2 alignment when it opens. Work on the tie-in will be completed next weekend (Nov. 15-16) after service ends early Saturday morning. Traffic on Venice Boulevard and surrounding streets will be unaffected during that work activity.

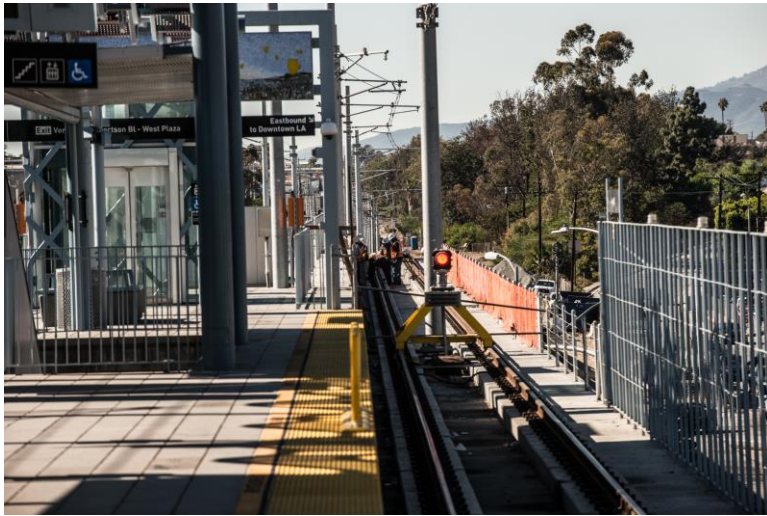
Rick Thorpe, CEO of the Exposition Construction Authority noted, "We're pleased to bring these two lines together and take the next step towards finishing Expo Phase 2 and connecting downtown to Santa Monica. We remain focused on completing construction in 2015."

For additional information regarding construction activities, please contact Expo at 213-243-5500 or visit www.buildexpo.org.

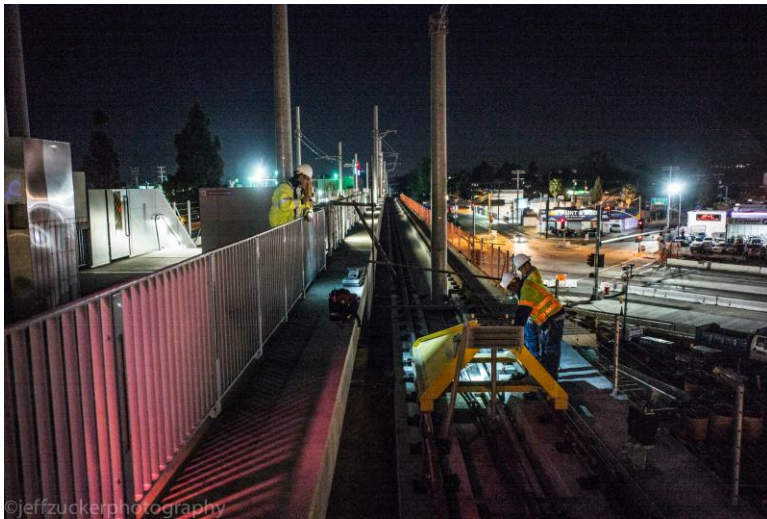
About the Expo Line

Service on Phase 1 of the Expo Line began in Spring 2012. Construction on Phase 2 is approximately 80% complete and is expected to be finished in 2015. The Expo Line will bring greater mobility to the region by connecting West Los Angeles to the region's existing rail network. These communities are traditionally underserved by public transportation and among the most traffic-congested in the nation.

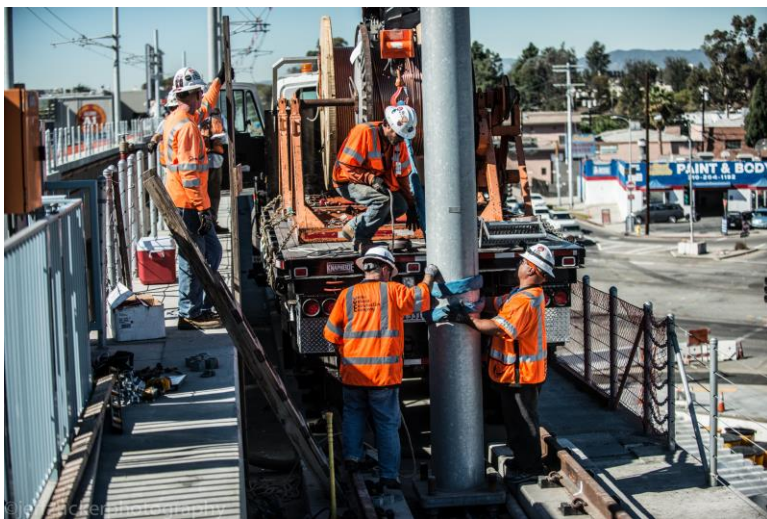
###



Bumper Stop and OCS Pole at the end of Phase 1 in Culver City



Work Crews removing train bumper from end of westbound tracks at the Culver City Station



Expo Phase 1 OCS pole removal



OCS pole removal to make way for Phase 1 and Phase 2 track tie-in



View of tracks looking west after tie-in work completion