

CRENSHAW/LAX PHOTOGRAPHIC UPDATE

July 1, 2019

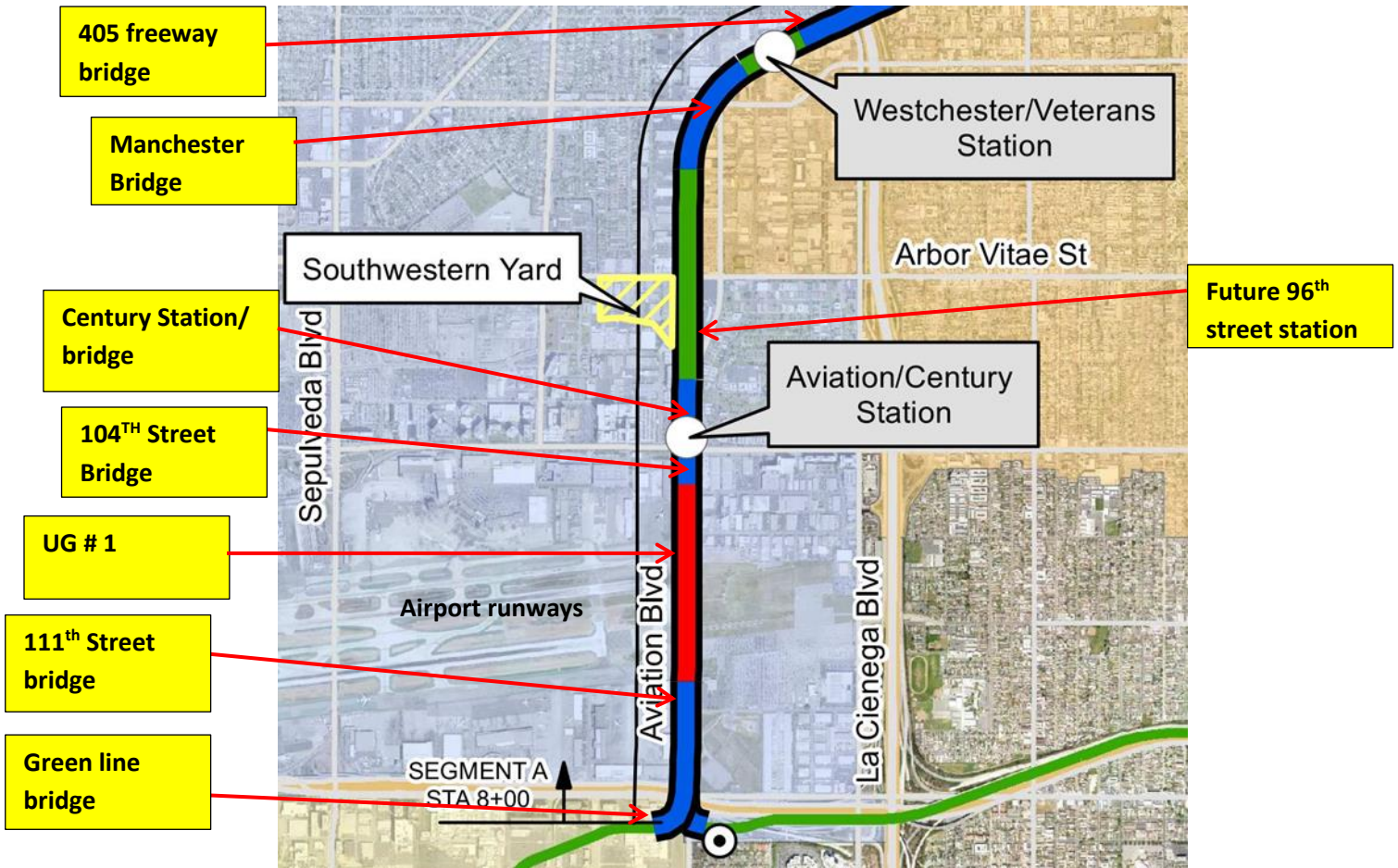
Crenshaw/LAX Transit Project



- 8.5 miles Light Rail
- 8 Stations
- \$2,058.0 Million
(Board approved revised LOP)

CRENSHAW/LAX PHOTOGRAPHIC UPDATE

Segment A



CRENSHAW/LAX PHOTOGRAPHIC UPDATE



UG1- Wire mesh fence installation at UG-1.



UG1- Erecting the wire mesh fence at UG-1.

CRENSHAW/LAX PHOTOGRAPHIC UPDATE



UG-1- A Guideway between UG1 and 104th St. wire fence placement.



UG-1- A Guideway between UG1 and 104th St. wire fence placement.

CRENSHAW/LAX PHOTOGRAPHIC UPDATE



AVIATION/CENTURY- AC demo and removal at the Aviation Station yard.



AVIATION/CENTURY- Grout placement at North Bond track for edge pavers.

CRENSHAW/LAX PHOTOGRAPHIC UPDATE



AVIATION/CENTURY- Grout placement at North Bond track for edge pavers.



AVIATION/CENTURY- Moving equipment to continue AC demo at the Aviation Station yard.

CRENSHAW/LAX PHOTOGRAPHIC UPDATE

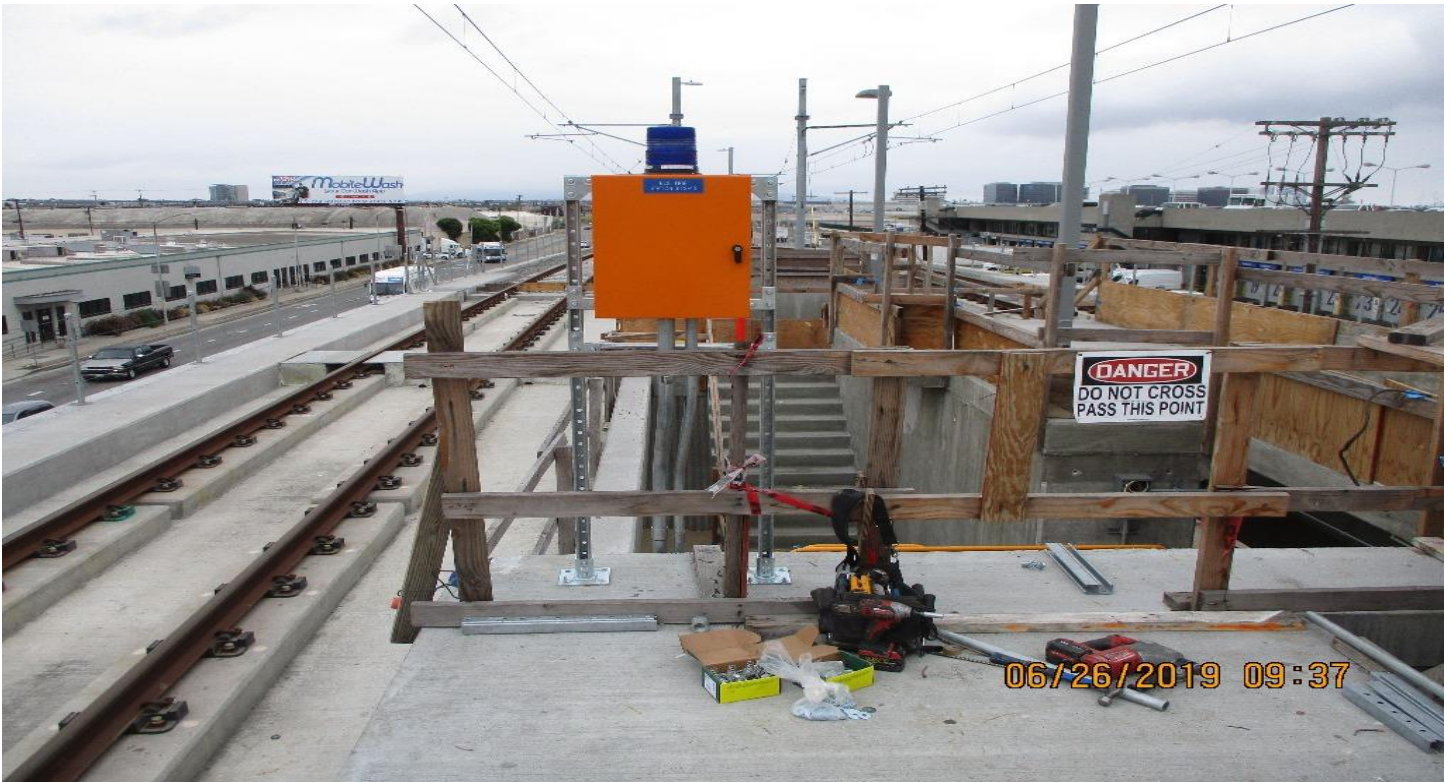


AVIATION/CENTURY- UP continue grout of North Bond track edge pavers and handrail at coping slab.



AVIATION/CENTURY- WSCC repairing concrete forms prior to placing concrete on K1LH XO Century bridge.

CRENSHAW/LAX PHOTOGRAPHIC UPDATE



AVIATION/CENTURY- Century Aviation Platform BLS installation.



GUIDEWAY-ARBOR VITAE- A Guideway north Arbor Vitae clearing and grubbing and prep for drainage swale.

CRENSHAW/LAX PHOTOGRAPHIC UPDATE



GUIDEWAY-ARBOR VITAE- A Guideway north Arbor Vitae clearing and grubbing and prep for drainage swale.



MANCHESTER BRIDGE- Manchester Bridge NB track WSCC removing existing rebar on demoed plinths.

CRENSHAW/LAX PHOTOGRAPHIC UPDATE



MANCHESTER BRIDGE- WSCC framing up forms for placing concrete into plinth NB track Manchester Bridge.

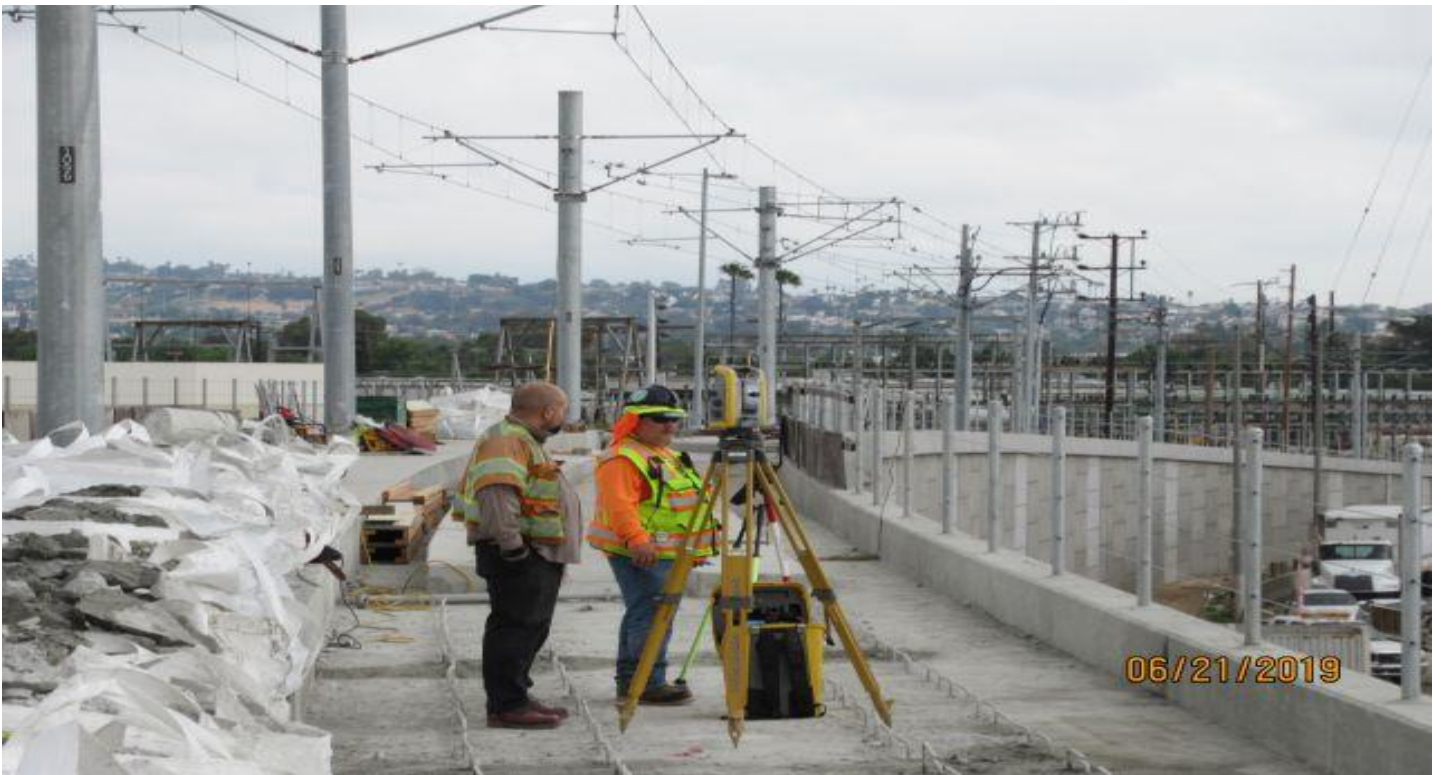


MANCHESTER BRIDGE- WSCC applying epoxy into hole for installing rebar onto deck plate.

CRENSHAW/LAX PHOTOGRAPHIC UPDATE



MANCHESTER BRIDGE- WSCC installing rebar after applying epoxy.



MANCHESTER BRIDGE- Coast Survey setting up control point for bench mark shots.

CRENSHAW/LAX PHOTOGRAPHIC UPDATE



MANCHESTER BRIDGE- WSCC finisher drilling for rebar dowels on Manchester bridge.

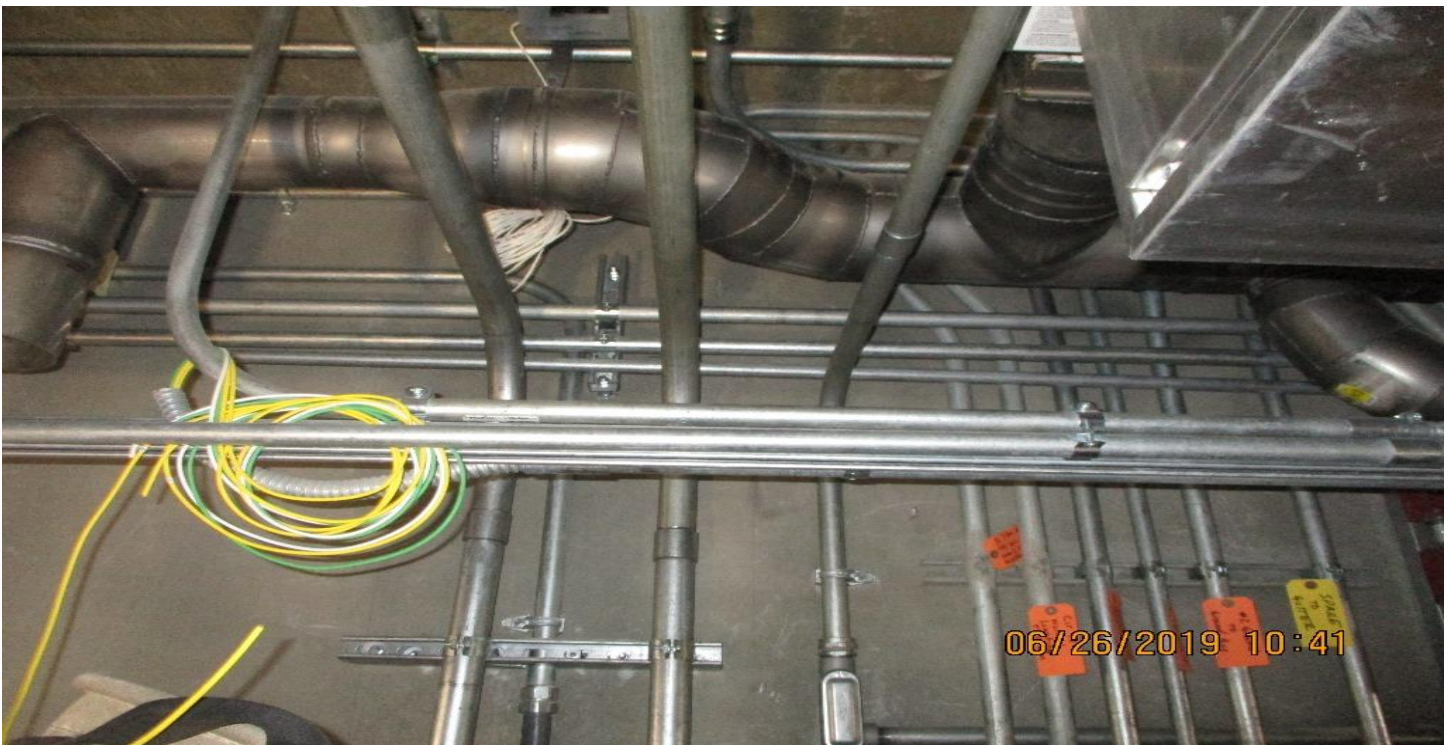


MANCHESTER BRIDGE- WSCC finisher verifying fastener plane on L&R plinths Manchester bridge.

CRENSHAW/LAX PHOTOGRAPHIC UPDATE



FLORENCE/HINDRY - WSCC Electric Westchester Veteran Station running Intrusion and Fire Alarm Conduit in the TC&C room.



FLORENCE/HINDRY - WSCC Electric Westchester Veteran Station running Intrusion and Fire Alarm Conduit in the TC&C room

CRENSHAW/LAX PHOTOGRAPHIC UPDATE



405 BRIDGE - CA Guideway at 405 UP line and shimming of NB track STA 149+00 to 154+00.



405 BRIDGE - A Guideway at 405 UP line and shimming of NB track STA 149+00 to 154+00.

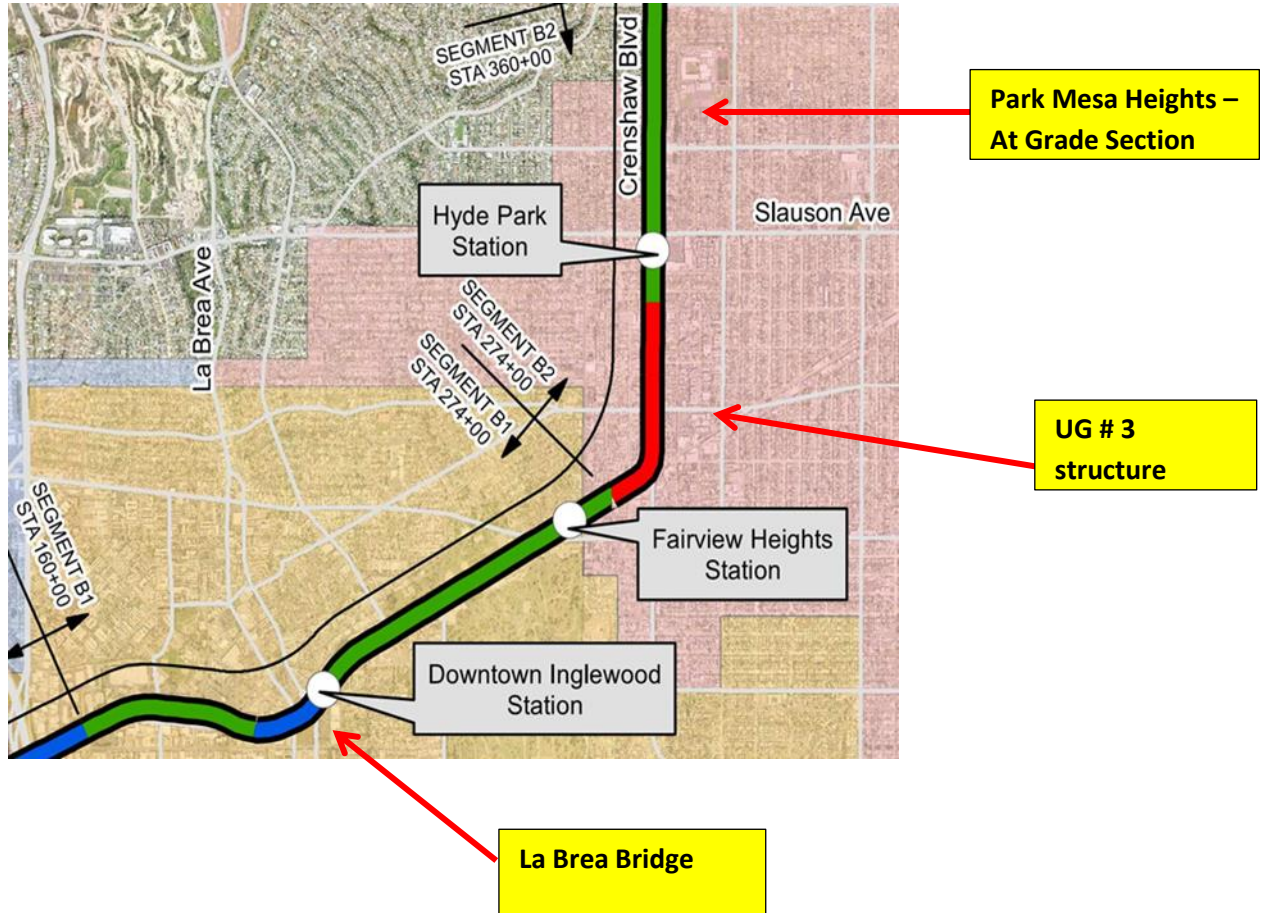
CRENSHAW/LAX PHOTOGRAPHIC UPDATE



405 BRIDGE - Setting the safety plates for bent 3 of the 405 bridge.

CRENSHAW/LAX PHOTOGRAPHIC UPDATE

Segment B



CRENSHAW/LAX PHOTOGRAPHIC UPDATE



DOWNTOWN INGLEWOOD STATION- Guideway at Inglewood Station ticketing pavilion footing cleanout and grading.



DOWNTOWN INGLEWOOD STATION- B1 Guideway at Downtown Inglewood Station platform and ticketing pavilion overview.

CRENSHAW/LAX PHOTOGRAPHIC UPDATE



DOWNTOWN INGLEWOOD STATION- Guideway at Downtown Inglewood Station platform and ticketing pavilion overview.



DOWNTOWN INGLEWOOD STATION- Guideway at Downtown Inglewood Station platform and ticketing pavilion overview.

CRENSHAW/LAX PHOTOGRAPHIC UPDATE



FLORENCE/CENTINELA - Catch basin #1 on Florence prior to concrete today.



FLORENCE/CENTINELA - Stripping and grouting the manhole on Florence.

CRENSHAW/LAX PHOTOGRAPHIC UPDATE



FLORENCE/CENTINELA - Select Electric Place conduits and pull boxes at Centinela and Florence crossing.



FLORENCE/CENTINELA - Griffith Co-Placing conc C&G on WB Florence east of Centinela.

CRENSHAW/LAX PHOTOGRAPHIC UPDATE



HIGH STREET- WSCC Making removals at Redondo and High intersection.

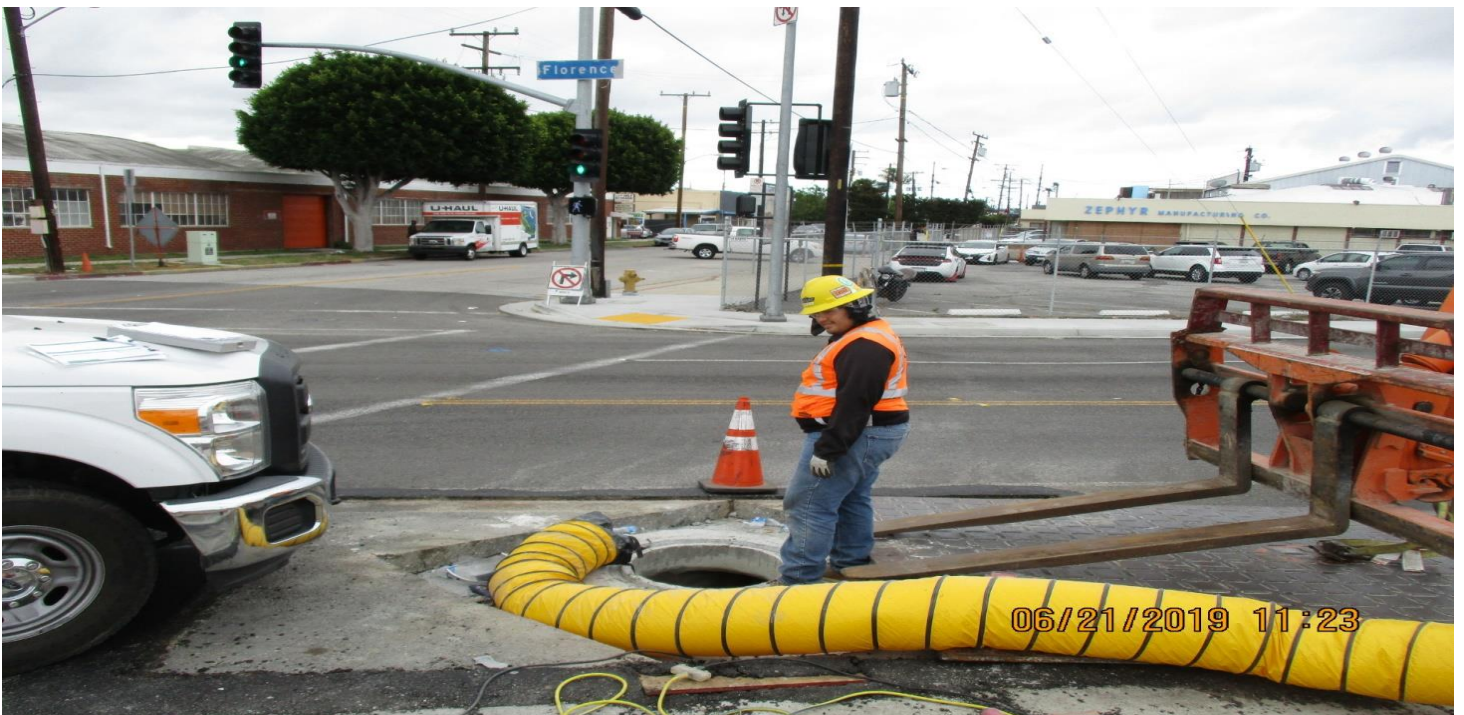


HIGH STREET- WSCC Placed VDL At High crossing.

CRENSHAW/LAX PHOTOGRAPHIC UPDATE



FLORENCE/WEST- Guideway between Q1-Q2 XO track to Fairview Heights Station tamping.

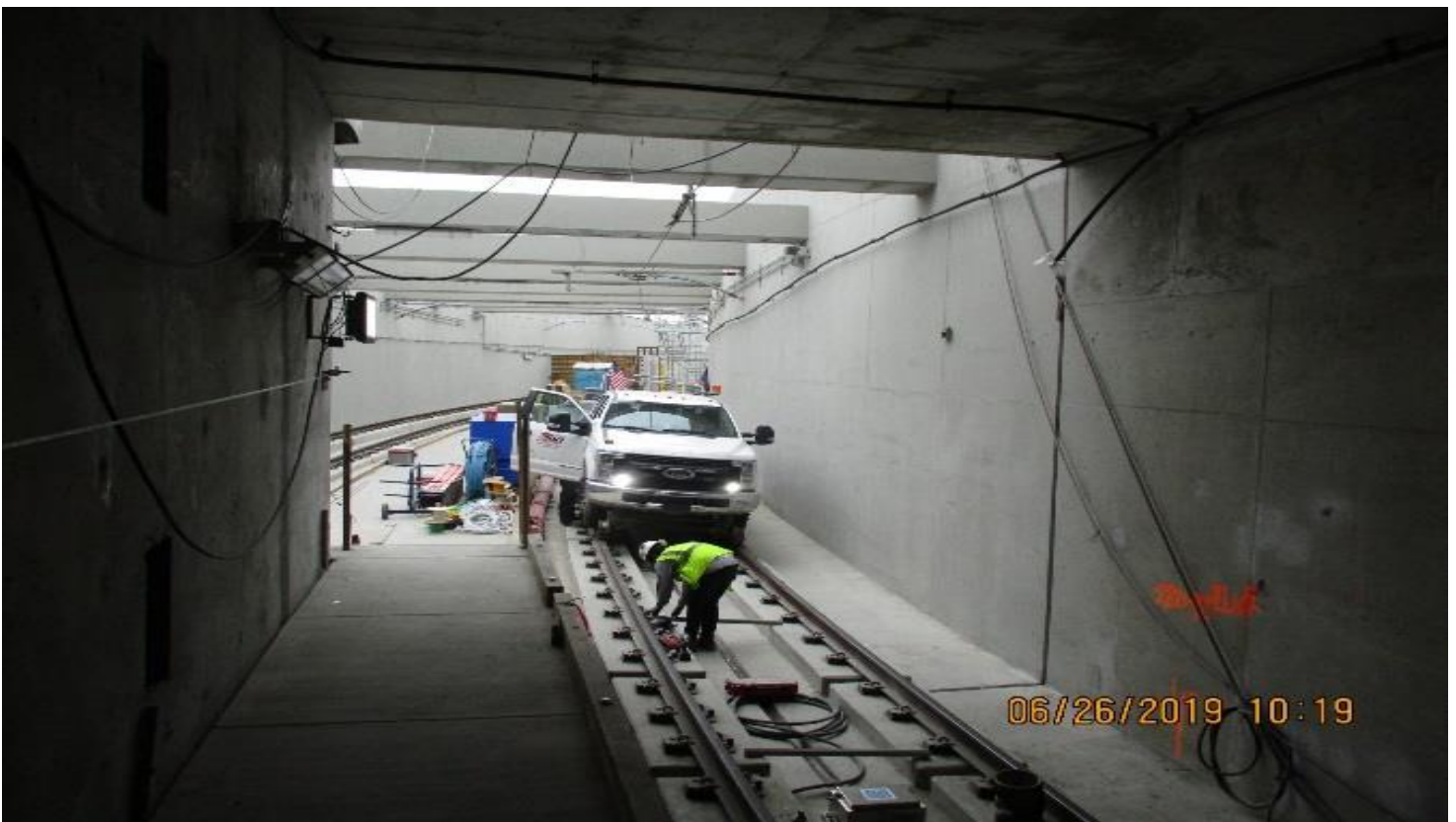


FLORENCE/WEST- Guideway between Q1-Q2 XO track to Fairview Heights Station tamping.

CRENSHAW/LAX PHOTOGRAPHIC UPDATE



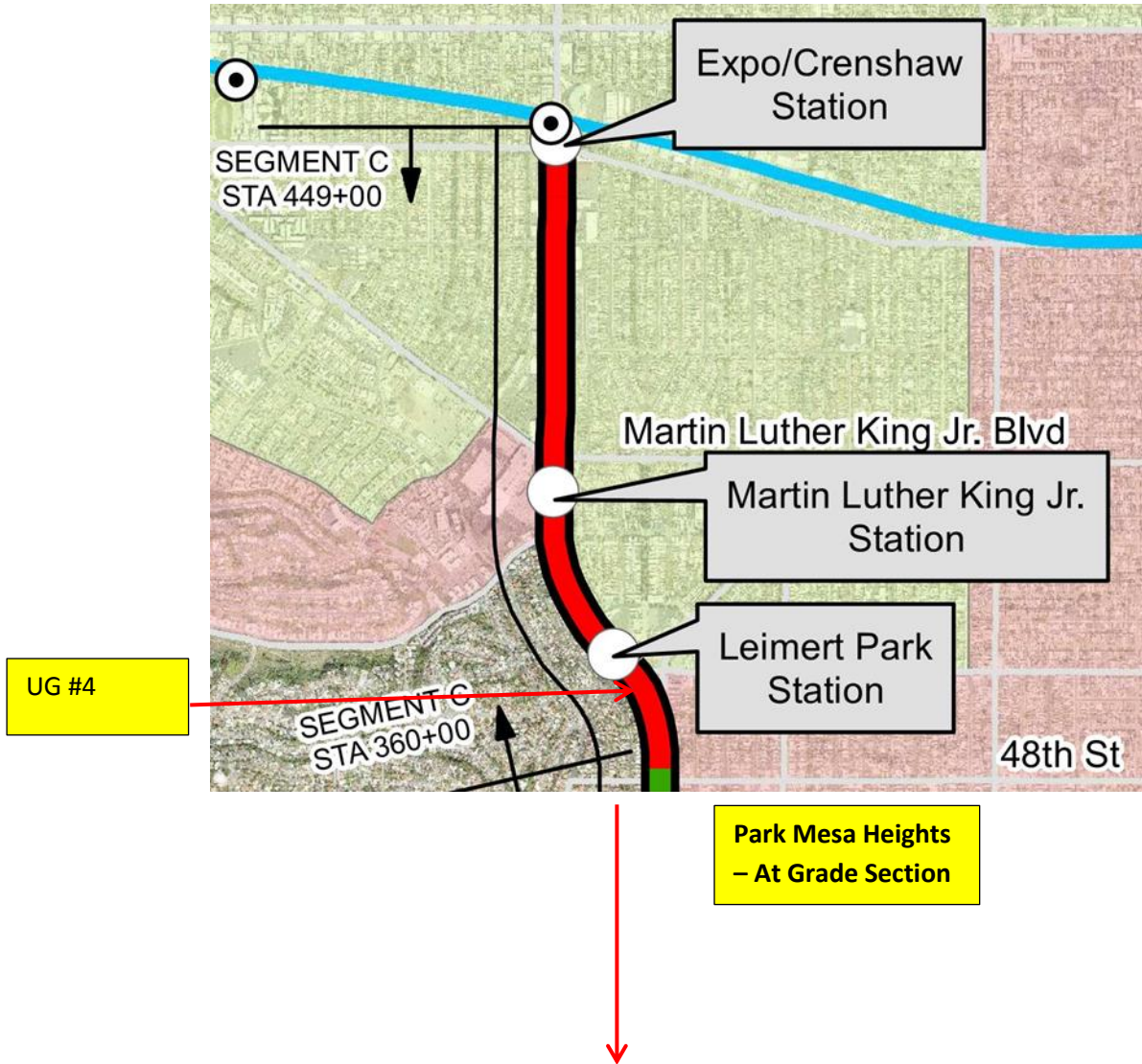
UG3- Continued finish work on U-channel walls of southbound portal.



UG3- Continued finish work on U-channel walls of southbound port

CRENSHAW/LAX PHOTOGRAPHIC UPDATE

Segment C



CRENSHAW/LAX PHOTOGRAPHIC UPDATE



UG4- Installation of fence posts along southbound U-channel walls.



CRENSHAW/VERNON- PX1S high voltage terminations on cables.

CRENSHAW/LAX PHOTOGRAPHIC UPDATE



LEIMERT PARK STATION- Continued installation of elevator frame 3 & 4 at the platform level.



LEIMERT PARK STATION- Continued tile grout from mid landing to plaza at entrance stairs #1.

CRENSHAW/LAX PHOTOGRAPHIC UPDATE



LEIMERT PARK STATION- Continued tile grout from mid landing to plaza at entrance stairs #1.



MARTIN LUTHER KING JR. STATION- Continued finish work from invert to concourse level at Emergency Exit #2.

CRENSHAW/LAX PHOTOGRAPHIC UPDATE



MARTIN LUTHER KING JR. STATION- Continued finish work from invert to concourse level at Emergency Exit #2.

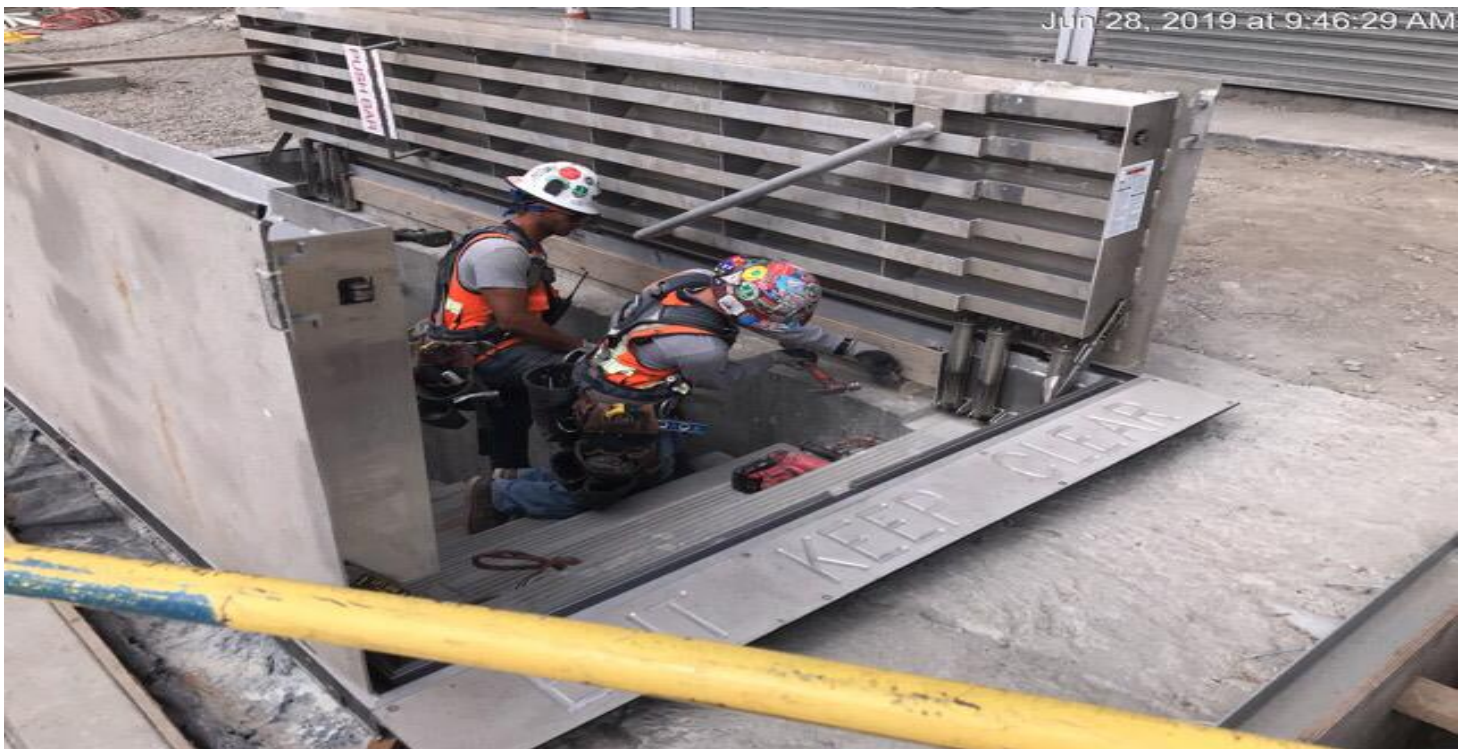


MARTIN LUTHER KING JR. STATION- Layout form for water line vault at the topside.

CRENSHAW/LAX PHOTOGRAPHIC UPDATE



EXPOSITION/CRENSHAW STATION – Continued finish work at the Emergency Ventilation Shaft north.



EXPOSITION/CRENSHAW STATION – Installation of plywood form for Emergency Exit #2 south at the roof level.

CRENSHAW/LAX PHOTOGRAPHIC UPDATE

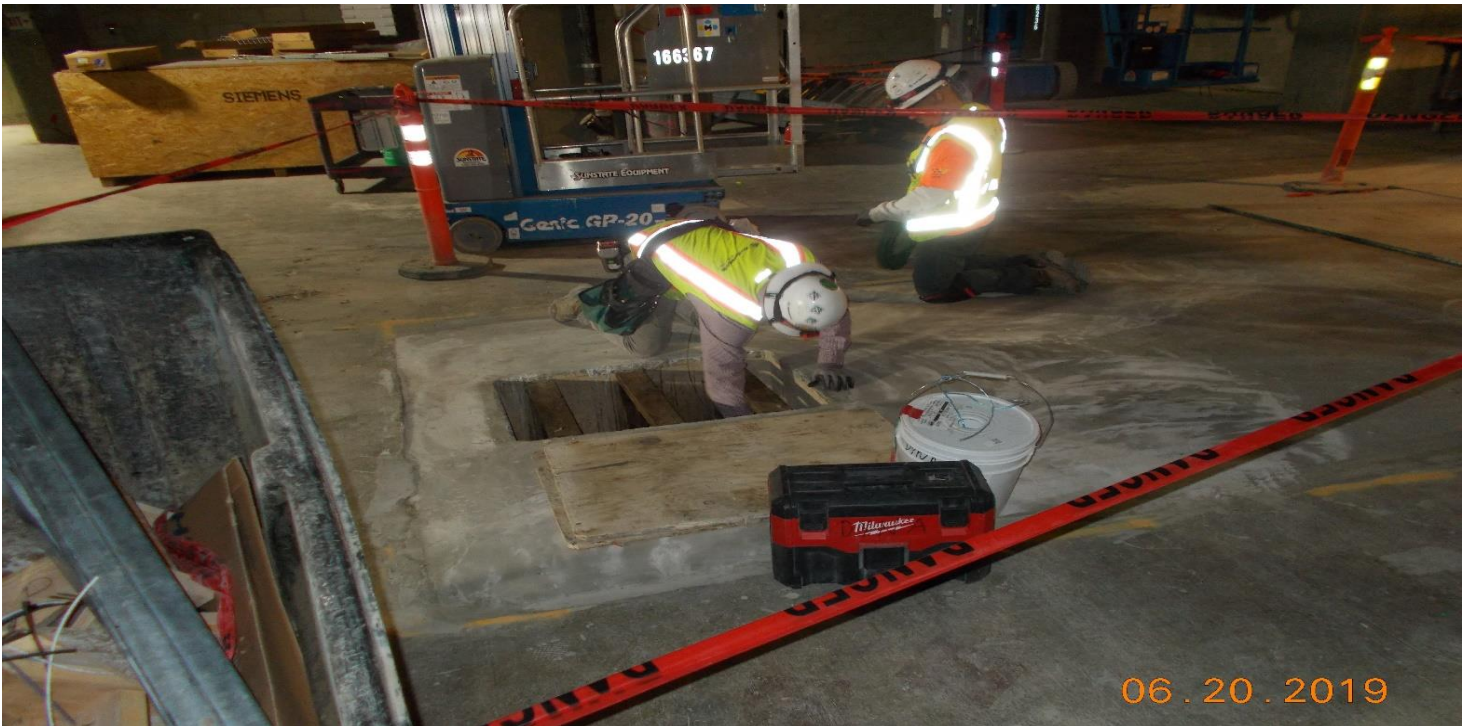


EXPOSITION/CRENSHAW STATION – Continued tile installation from mid landing to plaza.



CRENSHAW/EXPO- Aux Power room south, NETE installing shunts and disconnecting electronics for electrical testing on MSWGR.

CRENSHAW/LAX PHOTOGRAPHIC UPDATE



CRENSHAW/EXPO- TPSS rectifier-transformer embedded conduit feed from AC switchgear.



CRENSHAW/EXPO- Aux Power north PX2N testing